



**Superior**  
SEWING MACHINE & SUPPLY LLC

Supplying to Dealers Worldwide Since 1950

[www.supsew.com](http://www.supsew.com)

# Nippo New Product Bulletin

Summer 2008 No. 2-08

Copyright © 2008 By Supsewmac

**MASTER  
GENUINE PARTS  
DISTRIBUTORS  
FOR:**

**BROTHER**

**DÜRKOPP**

**HASHIMA**

**HIGHLEAD**

**KANSAI**

**MERROW**

**MITSUBISHI**

**PEGASUS**

**PFAFF**

**RIMOLDI**

**SEIKO**

**SUNSTAR**

**YAMATO**

## 3-WAY ADJUSTABLE COMPENSATING FEET

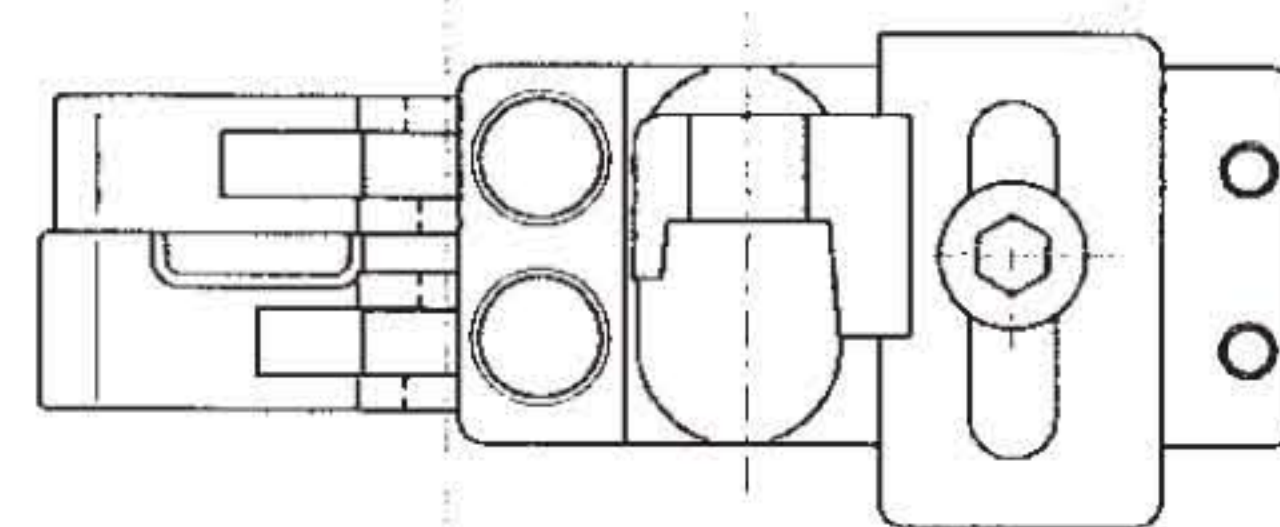
### For Single Needle, Needle Feed Lockstitch Machines

Ideal for sewing different material weights at the same time:

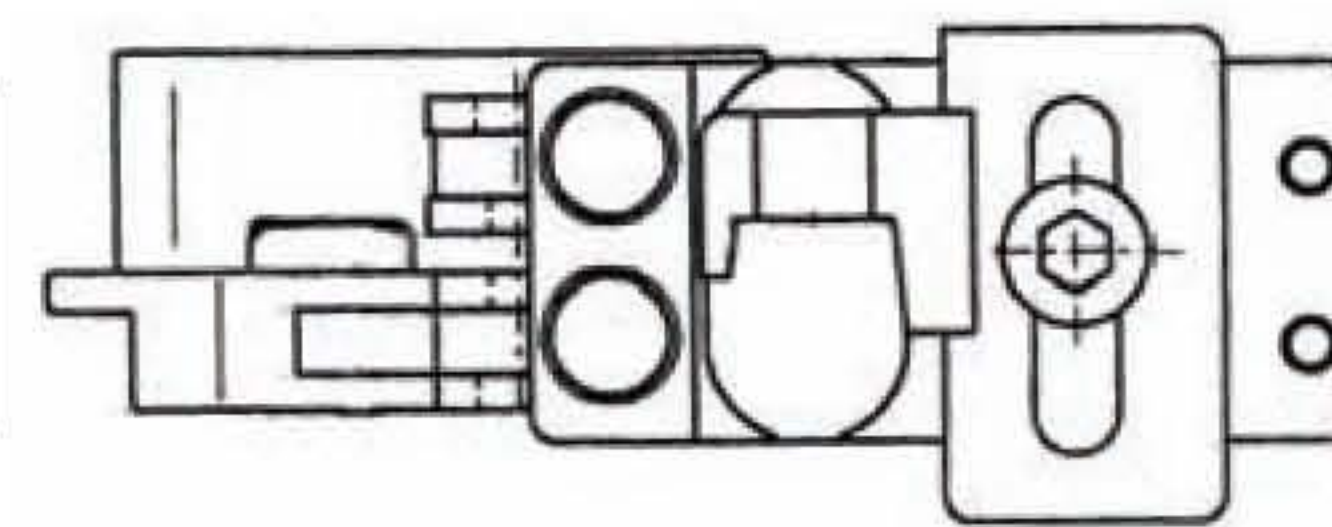
- Material can be fed and sewn smoothly
- Sews perfectly even stitches; helps eliminate skipped stitches

Each foot has the following adjustments:

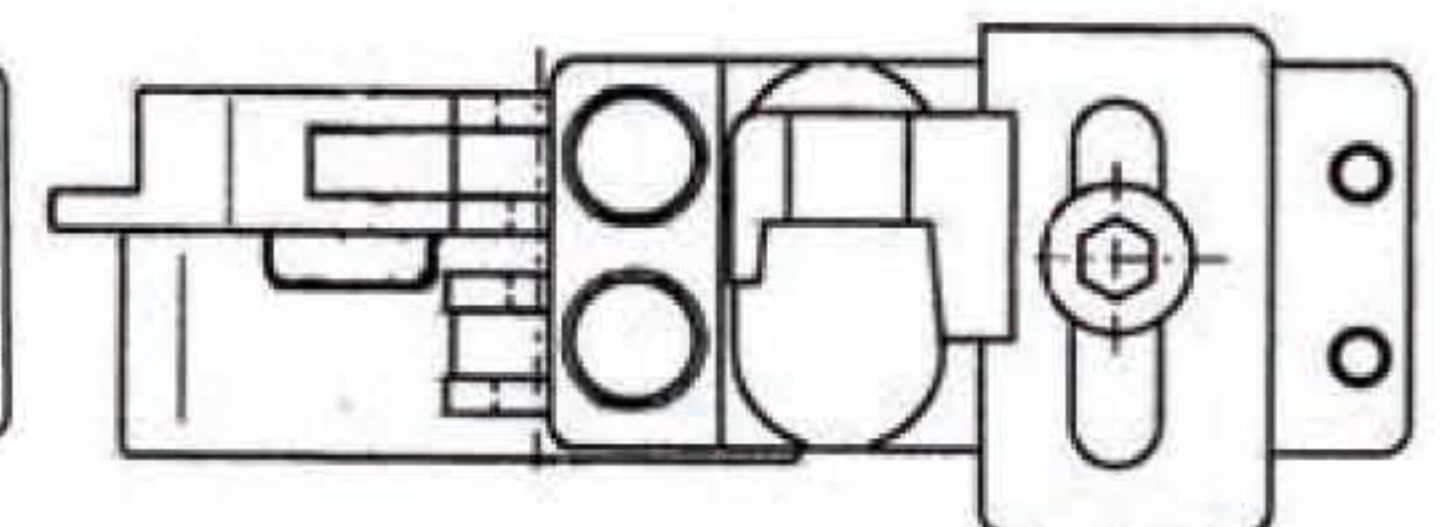
- Height adjusting screws on presser foot bottom
- Needle point adjusting screws on presser foot bottom
- Pressure adjusting screws on presser foot bottom



**STANDARD FOOT**  
#NP-2005S



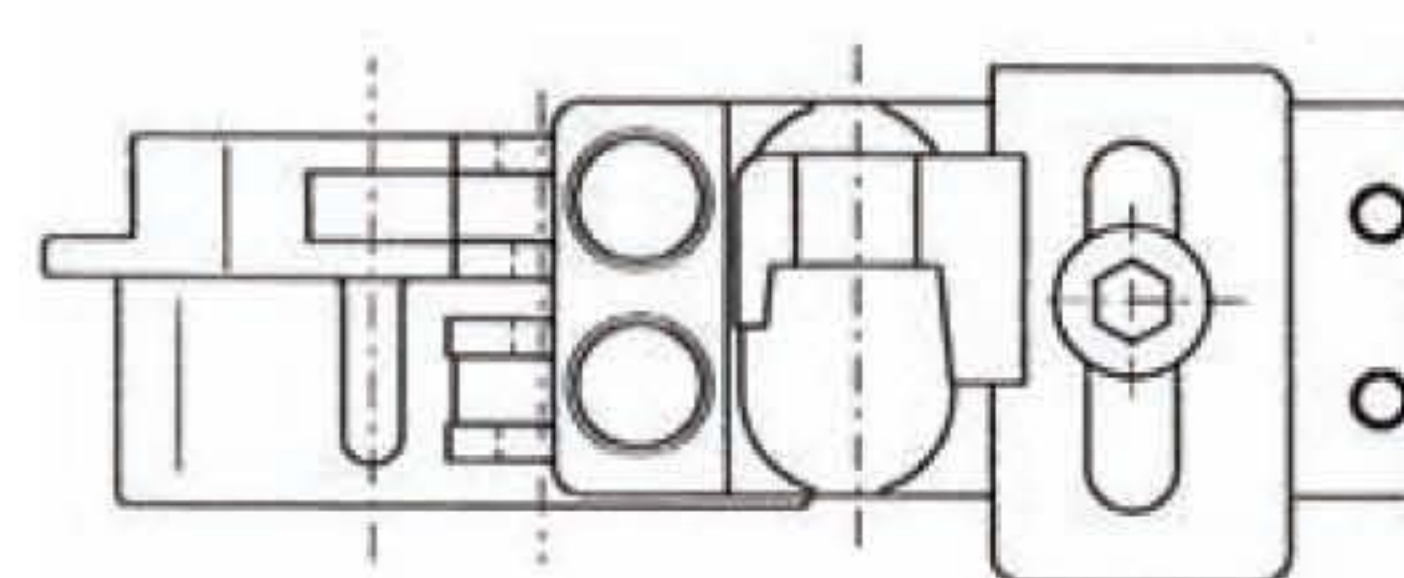
**1.5mm LEFT  
COMPENSATING FOOT**  
#NP-2005L-1.5



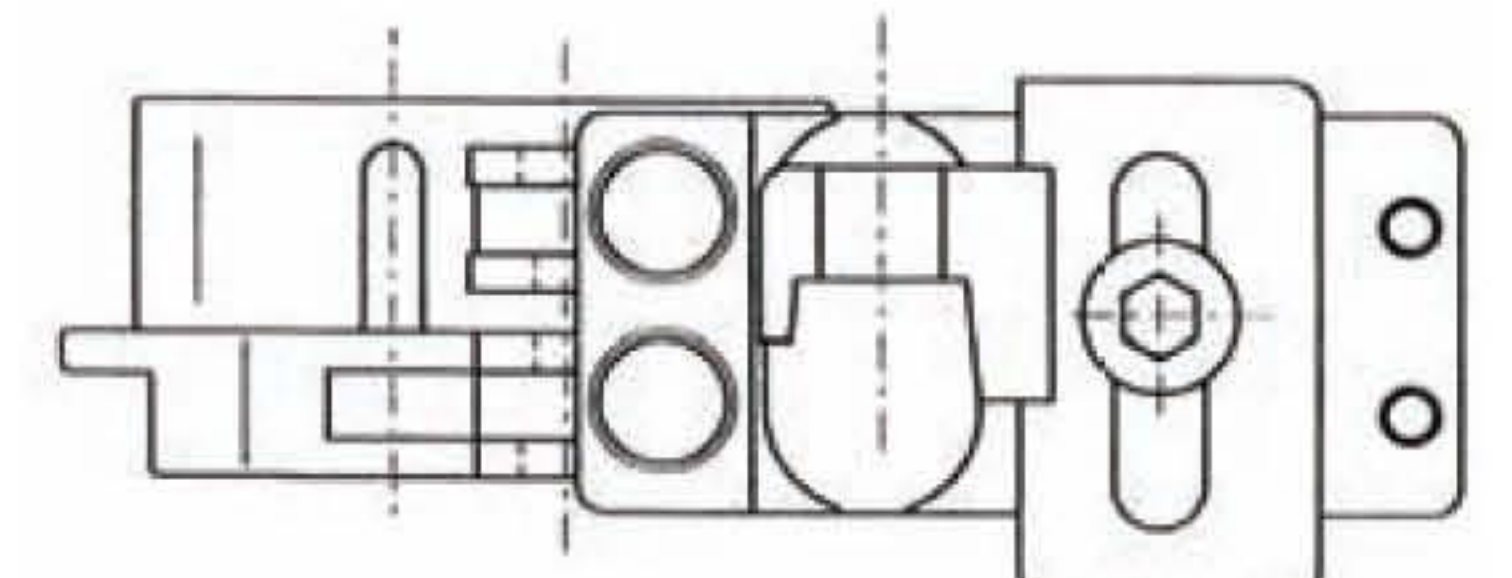
**1.5mm RIGHT  
COMPENSATING FOOT**  
#NP-2005R-1.5

### For 3 Step Zig-Zag Sewing Machines

- The presser foot pressure of each side can easily be adjusted with the pressure adjusting screws
- Perfect for thin, medium-heavy or heavy materials
- Suitable for high speed sewing with 1.0mm to 4.0mm fully adjustable compensating



**LEFT COMPENSATING  
FOOT 1.0-4.0mm**  
#NP-2005LF



**RIGHT COMPENSATING  
FOOT 1.0-4.0mm**  
#NP-2005RF

**NEW YORK Headquarters**

48 West 25th Street  
New York, NY 10010

Tel: (800) 274-5808 (212) 691-3400  
Fax: (800) 274-1500 (212) 807-8743

**MIAMI Office**

3900 NW 79th Avenue, Suite232  
Miami, FL 33166

Tel: (800) 678-1777 (305) 477-5585  
Fax: (800) 274-1500 (305) 477-1116

**LOS ANGELES Office**

1700B South Wall Street  
Los Angeles, CA 90015

Tel: (800) 873-7397 (213) 749-6150  
Fax: (800) 274-1500 (213) 749-6095



**ATTACHMENTS & PARTS FOR INDUSTRIAL SEWING MACHINES**

*Nippo is a Japanese manufacturer that develops a wide range of innovative, high-quality products for the sewing industry.*

**SPECIALTY-HINGED FEET MADE IN JAPAN!**

**Greatly reduces drag and puckering issues** – by using a very high quality Anti Friction base Nippo has produced a product that’s proven to significantly reduce drag and puckering.

**Reduces per piece production time** – Nippo has designed its foot to easily accomodate difficult-to-sew materials to ensure smooth feeding.

FOR All Plain Machines



**ANTI FRICTION FOOT**  
Long lasting bottom for all plain machines  
#NT-18

FOR All Plain Machines



**HINGED ZIPPER FOOT**  
with front prominent guide that increases your stitching accuracy  
#NP-163G

FOR Needle Feed Machines



**ANTI FRICTION FOOT**  
Long lasting bottom for needle feed machines  
#NT-24

FOR 2 Needle Machines



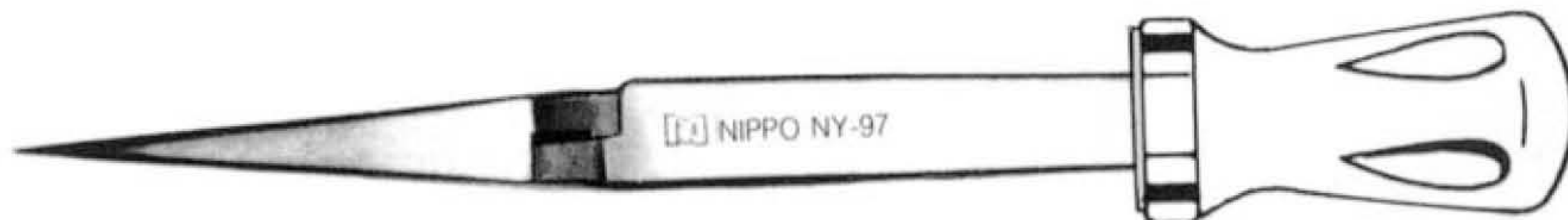
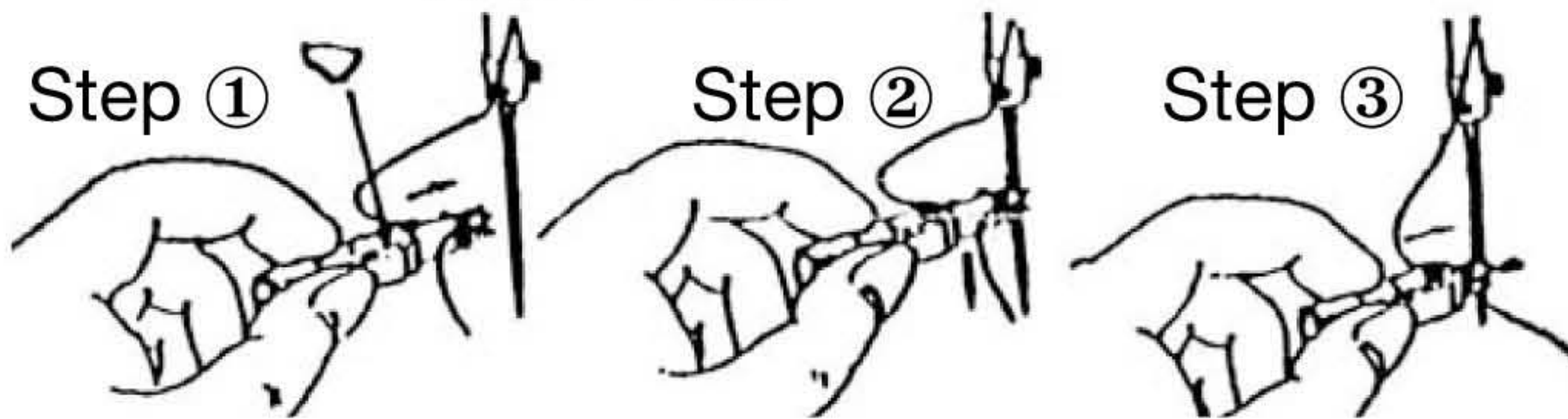
**PLASTIC FOOT**  
See-through plastic bottom with adjustable center plow for 2-needle 1/4 and 3/16 gauge machines  
#NP-903-LT-P1/4  
#NP-903-LT-P3/16

**IMPROVE YOUR PRODUCTIVITY**

**NEW AUTOMATIC NEEDLE THREADER**

with magnetic base that stays on the machine. Makes threading easier.

#V-NY-1140V



**SELF HOLDING TWEEZER WITH HANDLE**  
#NY-97G



**MASTER GENUINE PARTS DISTRIBUTORS FOR:**

**BROTHER**

**DÜRKOPP**

**HASHIMA**

**HIGHLEAD**

**KANSAI**

**MERROW**

**MITSUBISHI**

**PEGASUS**

**PFAFF**

**RIMOLDI**

**SEIKO**

**SUNSTAR**

**YAMATO**

**Complete product listings visit: [www.supsew.com](http://www.supsew.com) or email: [superior@supsew.com](mailto:superior@supsew.com)**

**NEW YORK Headquarters**

48 West 25th Street  
New York, NY 10010

Tel: (800) 274-5808 (212) 691-3400  
Fax: (800) 274-1500 (212) 807-8743

**MIAMI Office**

3900 NW 79th Avenue, Suite232  
Miami, FL 33166

Tel: (800) 678-1777 (305) 477-5585  
Fax: (800) 274-1500 (305) 477-1116

**LOS ANGELES Office**

1700B South Wall Street  
Los Angeles, CA 90015

Tel: (800) 873-7397 (213) 749-6150  
Fax: (800) 274-1500 (213) 749-6095