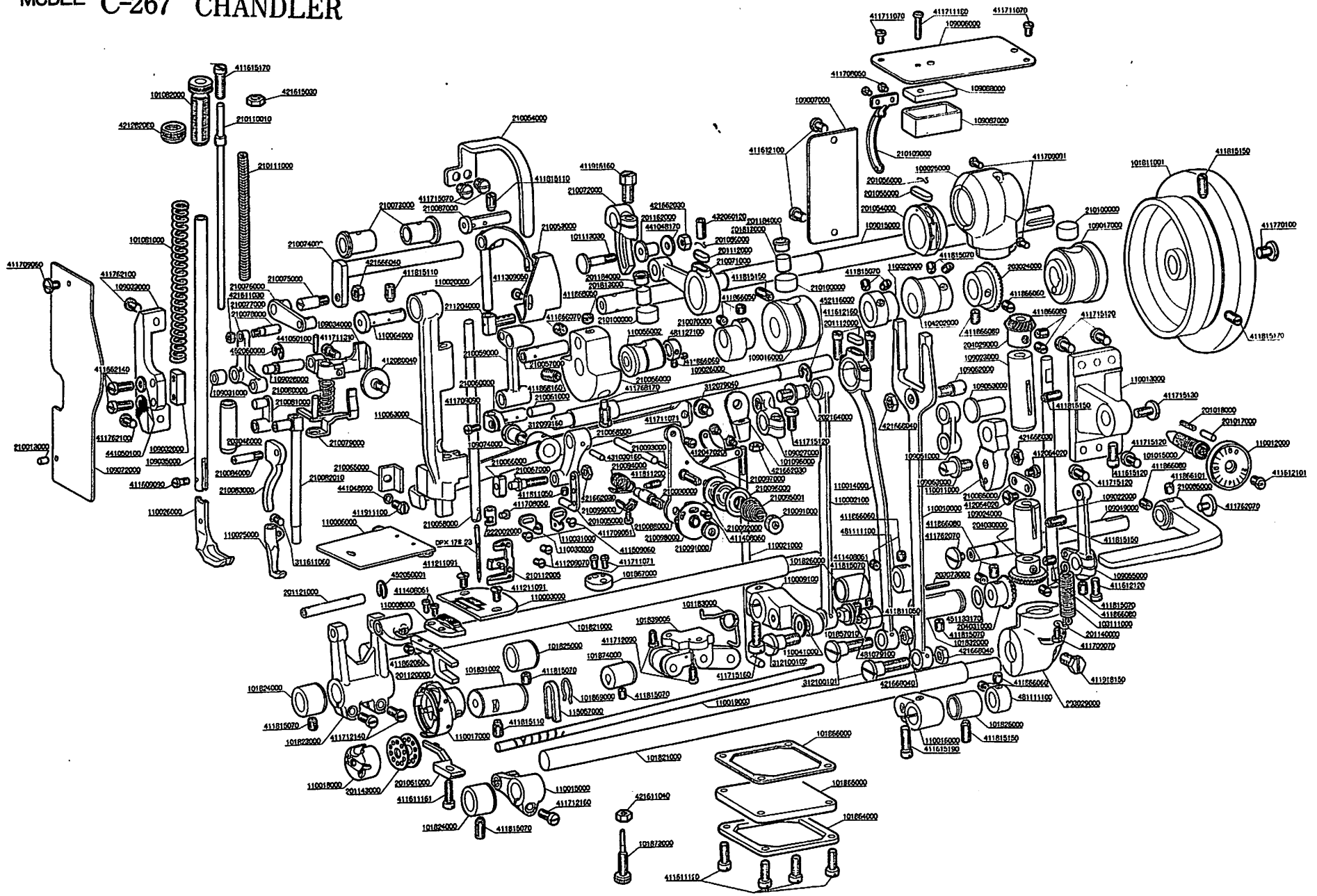


MODEL C-267 CHANDLER



品番 Part. No.	品名	Description	数量 Amt./Req.	品番 Part. No.	品名	Description	数量 Amt./Req.
201005000	三ツ目糸掛ケ	Thread retainer	G1	109049000	送り調節レバー軸	Reverse feed control lever shaft	G10
101015000	送り調節ネジ	Feed regulating screw	F6	109051000	ニスリンク	Feed connecting link	F9
201017000	送り調節ピン	Feed regulator stop pin	F11	109053000	送り調節台軸	Feed regulator hinge pin	F9
201018000	送り調節ピン	Feed regulator stop pin	F11	109055000	送り調節軸	Reverse feed control lever shaft	H10
201054000	ニスサマ	Feed drive eccentric cam ring	C8	209052000	ニスリンク段ネジA	Feed regulator connecting link hinge screw (A)	E9
201055000	ニスサマフェルト	Oil felt	C8	109063000	ニスリンク段ネジB	Feed regulator connecting link hinge screw (B)	G2
201056000	フェルト押エ	Oil felt spring	CA07	109072000	面板	Face plate	G9
101081000	押エ調整ネジ	Pressor spring	O2	109074000	膝上ゲテコ	Knee lifter lifting lever	F5
101082000	押エ調整ネジ	Pressor regulating tumb screw	B2	109087000	油溜り	Oil reservoir	B9
101096000	吊り棒メタル	Joint	G8	109088000	油溜りフェルト	Oil felt	B9
201112000	フェルト	Oil felt	EA07	110003000	針板	Needle bar	H4
101113000	上送りロット連結軸ネジ	Stud screw	D6	110005000	送り板	Bed slide	G4
201120000	送り台	Feed bar	J4	110006000	針棒駆動ワット	Needle bar frame driving rod	G8
201121000	送り台軸	Feed bar shaft	H4	110007000	送り	Feed dog	H4
201143000	引張りバネ掛ケ	Spring suspension hook	J10	110008000	送り調節台	Feed rock shaft crank	G9
201143000	ボビン	Bobbins	L4	110010000	送り調節台	Feed regulator	G9
201162000	上送りロット連結軸	Lifting eccentric connection collar	D6	110012000	目盛板	Stitch dial	F12
441048170	上送りロット連結軸段ネジ	Lifting eccentric connection washer	D6	110013000	送り調節台土台	Feed regulator supporting base	F11
101183000	爪テコ支エバネ	Lifting lever bell crank spring	H7	110014000	上下送りワット	Crank connecting rod	G6
101811001	ハズミ車	Balance wheel	C11	110015000	上下送りワット	Feed lifting rock shaft front crank	L8
201813000	上軸油溜りフェルト	Oil felt	D7,D8	110016000	上下送りワット(後)	Feed lifting rock shaft rear crank	K9
101821000	送り軸	Feed rock shaft	JK,K7	210017000	釜	Hook	K5
101823000	送り台軸	Feed rock shaft front	K4	110018000	ボビンケース	Bobbins case	L4
101824000	送り軸側メタル	Feed rock shaft front	J3,L5	110019003	下軸	Hook driving shaft	K8
101825000	送り軸側メタル	Feed rock shaft intermediate	J6	110020000	天秤	Thread take-up lever	D5
101826000	送り軸後メタル	Feed rock shaft rear	H8,K9	110021000	後吊り棒	Lifting lever connecting rod	H7
481111100	送り軸スラスト受け	Food rock shaft thrust collar	GS,K10	110022000	上下送りカム	Feed driving eccentric cam	D8
101831002	下軸側メタル	Hook driving shaft front bushing	K5	211204000	天秤スライド軸	Take-up lever thrust pin	E5
101832000	下軸後メタル	Hook driving shaft rear bushing	J9	110025000	上送り足	Walking foot	H3
101833000	爪テコ支エ	Lifting lever bell crank	J6	110026000	押エ足	Presser foot	G2
101874000	下軸側メタル	Hook driving shaft intermediate bushing	J6	110027000	糸室内(左)	Upper frame thread guide A	G5
101875000	調整ねじ	Oil adjusting screw	M6	210053000	天秤油溜り	Take-up oil splasher	B6
101864000	釜給油タンク蓋カバー	Presser plate	LA	210054000	天秤カバー	Thread take-up lever cover	GS
101865000	釜給油タンク蓋	Oil reservoir	LA	110055002	上軸側メタル	Main shaft front bushing	E7
101866000	釜給油タンク蓋パッキン	Gasket	K8	210056000	釣合軸	Balance weight	F5
101867000	定規止押エ	Attachment plate	H6	210057000	針棒クランクピン	Needle bar crank pin	G5
101868000	フェルト押エ	Oil felt presser	K6	210058000	針棒	Needle bar	E5
452070000	針棒駆動軸段ネジ	Spring ring	E8	210059000	針棒クランクワット	Needle bar crank rod	E5
202164000	針棒駆動軸段ネジ	Needle bar frame driving rod stud	F9	210060000	針棒軸フェルト	Needle bar connection	F5
110041000	ワット段ネジA	Rod hinge screw(A) washer	J8	222022000	針棒軸	Oil felt	H5
201184000	上軸給油器	Rubber plug	DE07	210063000	針棒軸台	Needle bar thread guide	F4
203024000	上軸車軸(大)	Main shaft gear	D10	110064000	針棒軸台軸	Needle bar frame stud	E4
203025000	上軸車軸(小)	Hook driving shaft gear case	K10	210065000	針棒軸台側	Needle bar frame guide	G4
203049000	押エ棒下メタル	Pressor bar bushing	F3	210066000	針棒軸台側	Needle bar frame slide block	G5
201061000	中蓋押エ	Bobbins case holder positioning finger	L4	210067000	針棒軸台側	Screw stud	G5
203073000	下軸後メタルフェルト	Oil felt	H9	210068000	針棒軸台側	Needle bar shaft front crank	G6
204111000	引張りバネ	Tension spring	J10	針 D P x 17 #23	Needle DP x 17 #23	Needle DP x 17 #23	G8
204293000	上軸車軸(小)	Upright shaft upper gear	E9	210070000	上送りカム	Lifting eccentric cam	E7
204030000	下軸車軸(大)	Upright shaft lower gear	G8	210071000	上送りワット	Upper feed driving rod	D7
204031000	下軸車軸(小)	Hook driving shaft gear	J9	210072000	上送りワット	Upper feed spring rod	C6
481079100	下軸スラスト受け	Hook driving shaft thrust collar	J8	210073000	上送りワット	Bushing	C4
100857010	針棒駆動ワット段ネジナット	Stud screw nut	J8	210074000	上送りワット	Screw stud	D3
109076000	面板	Top cover	B9	210075000	上送りワット	Connecting link	D3
109077000	窓板	Side plate	B8	210076000	L型リンク	L shaped link	E3
109078000	上軸	Main shaft	D8	210077000	L型リンク	L shaped link connecting screw stud	E3
109016000	上軸側メタル	Main shaft intermediate bushing	E7	210078000	L型リンク	L shaped link connecting screw stud	E3
109017000	上軸後メタル	Main shaft rear bushing	D10	210079000	糸室側受板	Thread release guide	F4
104202000	水平送り偏心カム	Feed eccentric cam	D9	210080000	糸室側受板バネ	Thread release spring	F3
109022000	立軸	Upright shaft	F10	210081000	上送り調節リンク	Walking bar driving link	F3
109023000	立軸側メタル	Upright shaft upper bushing	E9	210082000	押エゲテコ	Walking bar	G4
109024000	立軸下メタル	Upright shaft lower bushing	G9	210083000	手立リフト	Hand lifter pin	G3
109025000	上軸車軸ケース	Main shaft gear case	C9	210084000	送り調節レバー	Reverse feed control lever	G11
109026000	針棒駆動軸	Needle bar frame rock shaft	E7	210085000	送り調節ワット	Feed regulating link	G9
109027000	針棒駆動軸	Needle bar shaft rear crank	G8	210086000	天秤支エ板	Take-up lever pin	D5
109028000	押エ上ゲテコ台組合軸	Connecting pin	E3	210087000	糸室側受板	Tension controller base	G6
109031000	押エ上ゲテコ台組合軸	Connecting pin roller	F3	210088000	糸室側受板	Tension release bar	F6
109032000	押エ上ゲテコガイド板	Pressor bar bracket position guide	F2	210089000	糸室側受板	Take-up spring stud	G6
109033000	押エ上ゲテコガイド板土台	Pressor bar bracket position guide supporting base	D2	210090000	糸室側受板	Thread tension stud nut	H7,G8
109034000	押エ上ゲテコ	Pressor bar guide bracket	E4	210091000	糸室側受板	Tension disc	G7
109035000	押エ棒	Pressor bar	G2	210092000	糸室側受板	Tension spring	G7
				210093000	糸室側受板	Tension disc holder	G7
				210094000	糸室側受板	Tension release lever	G7

品番 Part. No.	品名	Description	数量 Amt./Req.	品番 Part. No.	品名	Description	数量 Amt./Req.
210088000	取取りバネ案内	Take-up spring guide disc	H8	431030160	テーパピン	Tapered pin 3x16	1
210089000	糸取りバネ調整板	Take-up spring adjusting plate	G8	441050100	テーパピン	Tapered pin 2x12	1
210100000	上軸側メタルフェルト	Oil felt	E6,D8,C10	432030120	スプリングピン	Spring pin 8x12	1
210109000	油心支エ金具	Oil wick holder plate	C8	210013000	ピン	Pin 3.4x7	1
210110010	上送りバネ支持棒	Spring pole	C3				
210111000	上送り押エバネ	Walking bar spring	C3	451133170	ゴムリング	Rubber ring 13.3x16.7x1.7	1
210112005	糸室案内(下)	Lower thread guide	H5	452060000	Eリング	Snap ring 8	1
481127100	上軸スラスト受け	Thrust collar	E7	452060001	Eリング	Snap ring 5	1
115057000	街油フェルト	Oil felt	J8				
411209700	ネジ	Screw 4-40, L=5.7	2	101823005	送り台軸(組)	Feed rocker asm. (101823000,411712140)	(1)
411209800	ネジ	Screw 4-40, L=8.5	1	481111105	送り軸スラスト受け(組)	Feed rocker shaft thrust collar asm. (481111100,411866060)	(2)
411612100	ネジ	Screw 4-40, L=6.0	2	203024005	上軸車軸	Main shaft gear case (203024000,204029000,411866060)	(1)
411509600	ネジ	Screw 4-40, L=7.0	1	109025005	上軸車軸ケース(組)	Hook driving shaft gear case asm. (203025000,411915153)	(1)
411815070	ネジ	Screw 4-40, L=8.5	2	204030005	上軸車軸(組)	Hook driving shaft gear case (204030000,204034000,411866060)	(1)
411211091	ネジ	Screw 4-40, L=8.5	1	481079105	下軸スラスト受け(組)	Hk driving shaft thrust collar asm. (481079100,411811050)	(1)
411708500	ネジ	Screw 4-44, L=4.0	3	104202005	水平送り偏心カム(組)	Feed eccentric cam asm. (104202000,411709090)	(1)
411866030	ネジ	Screw 4-40, L=8.5	8	109025005	上軸車軸ケース(組)	Main shaft gear case asm. (109025000,411709091)	(1)
411866050	ネジ	Screw 4-40, L=6.0	7	109026005	針棒駆動軸(組)	Needle bar frame rock shaft asm. (109026000,210089000,431030160)	(1)
411815150	ネジ	Screw 4-28, L=15.0	1	109027005	針棒駆動軸側板(組)	Needle bar shaft rear crank asm. (109027000,202164000,411715120)	(1)
411611161	ネジ	Screw 4-40, L=7.0	2	109034005	押エ上ゲテコ台(組)	Pressor bar guide bracket asm. (109034000,109028000,441050100)	(1)
411811050	ネジ	Screw 4-40, L=5.0	1	109056000	送り調節軸(組)	Reverse feed control lever crank asm. (109056000,411815170,411612120)	(1)
411408051	ネジ	Screw 4-44, L=18.0	3	110009105	水平送りワット(組)	Feed rock shaft crank asm. (110009100,411715160)	(1)
312099160	段ネジ	Hinge screw D=9.8, H=15.9	2	110014005	上下送りワット(組)	Crank connecting rod asm. (110014000,411612160)	(1)
312079040	段ネジ	Hinge screw D=7.9, H=3.5	1	110015005	上下送りワット(組)	Feed fitting rock shaft front crank asm. (110015000,411712160)	(1)
411712030	ネジ	Screw 4-28, L=9.0	1	100016005	上下送りワット(組)	Food lifting rock shaft rear crank asm. (100016000,411708500)	(1)
411709060	ネジ	Screw 4-40, L=6.0	2	110020005	天秤(組)	Thread take-up lever asm. (110020000,211204000,210087000)	(1)
411611120	ネジ	Screw 4-40, L=12.0	4	110022005	上下送りカム(組)	Feed driving eccentric cam asm. (110022000,411815170)	(1)
411862060	ネジ	Screw 4-40, L=6.0	1	210066005	針棒軸(組)	Needle bar connection asm. (210066000,210069000,431030160)	(1)
411762070	ネジ	Screw 4-40, L=12.0	1	210067005	針棒軸側角ゴマ(組)	Needle bar shaft rear crank asm. (210067000,210057000)	(1)
411612150	ネジ	Screw 4-40, L=8.5	1	210070005	上送りカム(組)	Lifting eccentric cam asm. (210070000,411866060)	(1)
411715120	ネジ	Screw 4-28, L=14.0	2	210072005	上送りワット(組)	Upper feed spring rod asm. (210072000,210089000,411408060,412047020)	(1)
411712140	ネジ	Screw 4-28, L=14.0	2	110088005	糸取り台板(組)	Tension controller base asm. (210088000,210089000,210090000,210091000,210092000,210093000,210094000,210095000,411408060,412047020)	(1)
411711070	ネジ	Screw 4-28, L=12.0	1				
411715120	ネジ	Screw 4-28, L=14.0	2				
411712140	ネジ	Screw 4-28, L=14.0	2				
411815110	ネジ	Screw 4-28, L=10.5	3				
411918150	ネジ	Screw 4-20, L=40.5	1				
411711130	ネジ	Screw 4-40, L=12.8	1				
411711180	ネジ	Screw 4-40, L=18.0	1				
411612160	ネジ	Screw 4-40, L=15.5	2				
411711071	ネジ	Screw 4-40, L=7.0	3				
411712000	ネジ	Screw 4-28, L=11.0	2				
411615120	ネジ	Screw 4-28, L=11.0	2				
411812000	ネジ	Screw 4-40, L=12.0	1				
411811120	ネジ	Screw 4-40, L=4.5	1				
411866050	ネジ	Screw 4-40, L=12.0	2				
411408060	ネジ	Screw 4-44, L=6.0	1				
411715070	ネジ	Screw 4-28, L=7.4	2				
411769170	ネジ	Screw 4-28, L=16.5	1				
411869160	ネジ	Screw 4-28, L=18.0	1				
411868070	ネジ	Screw 4-28, L=7.0	1				
411729051	ネジ	Screw 4-40, L=8.5	2				
411911100	ネジ	Screw 4-40, L=9.5	1				
312100102	段ネジ	Hinge screw D=10.0, H=9.5	1				
315110050	ネジ	Screw 4-40, L=6.5	1				