

# SUPERIOR SEWING MACHINE & SUPPLY LLC

*Serving The Sewing Industry For Over 50 Years*

WINTER 2004  
No. 1-04

Copyright © 2003 By Supsewmac



Web Site: [www.SuperiorSew.com](http://www.SuperiorSew.com)

E-mail: [superior@supsew.com](mailto:superior@supsew.com)

NEW YORK HEADQUARTERS:	MIAMI OFFICE:	LOS ANGELES OFFICE:
Phone: 1-800-274-5808 212-691-3400	1-800-678-1777 305-477-5585	1-800-873-7397 213-749-6150
Fax: 1-800-274-1500 212-807-8743	1-800-678-0727 305-477-1116	1-800-368-6489 213-749-6095

**Superior Is Proud To Be The  
MASTER DISTRIBUTOR of Genuine SIRUBA Parts.**

## PARTS FOR DÜRKOPP/ADLER

FOR Classes: 745, 746



**HOOK WITH CAP**  
#935-74-521-0

FOR Classes: 745, 746



**ALUMINUM BOBBIN  
W/ KNURLED STEM**  
#246-3058

## PARTS FOR JUKI

FOR Class: LU2210-6



**OPENER**  
#107-25000

FOR Class: LU2210-6



**THREAD TAKE-UP  
GUIDE ASSEMBLY**  
#107-41452

FOR Class: MO2543FBD6



**NEEDLE CLAMP  
ASSEMBLY**  
#118-70854

FOR Class: MO3743FB6



**NEEDLE CLAMP**  
#121-50603

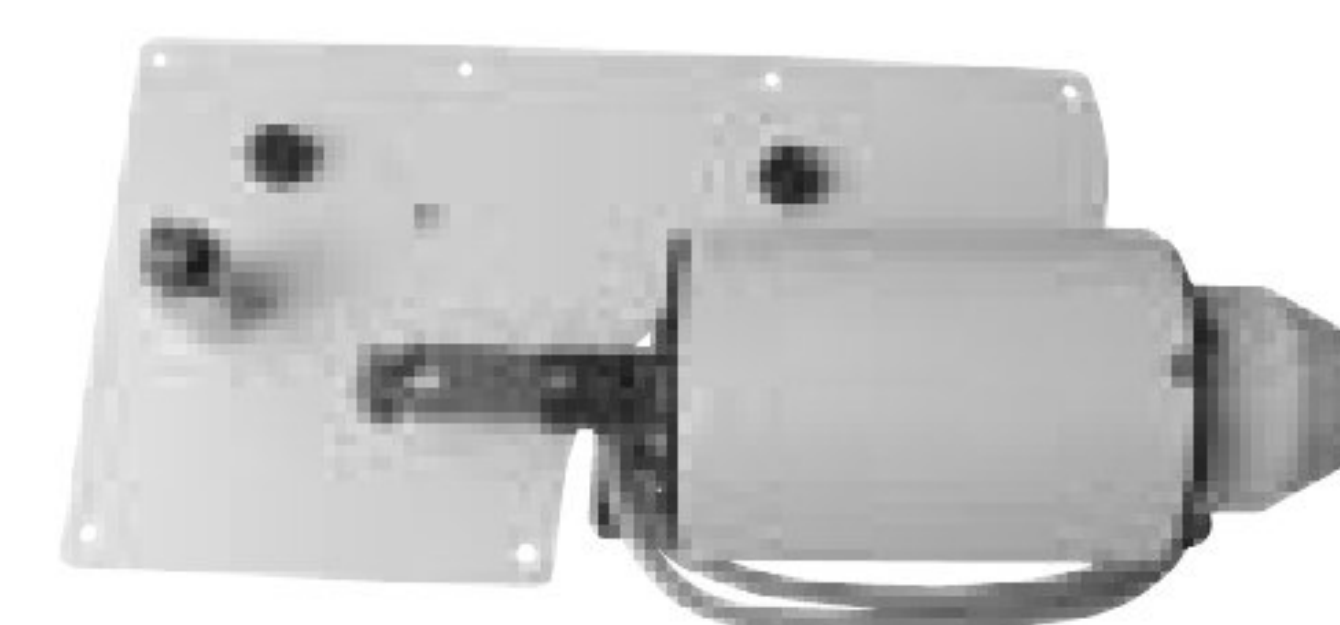
## PARTS FOR JUKI

FOR Classes:  
LBH 781, 2, 3, 4



**SHIFTER  
DRIVING PIN**  
#B-7160-781-0A0

FOR Class: DDL9000



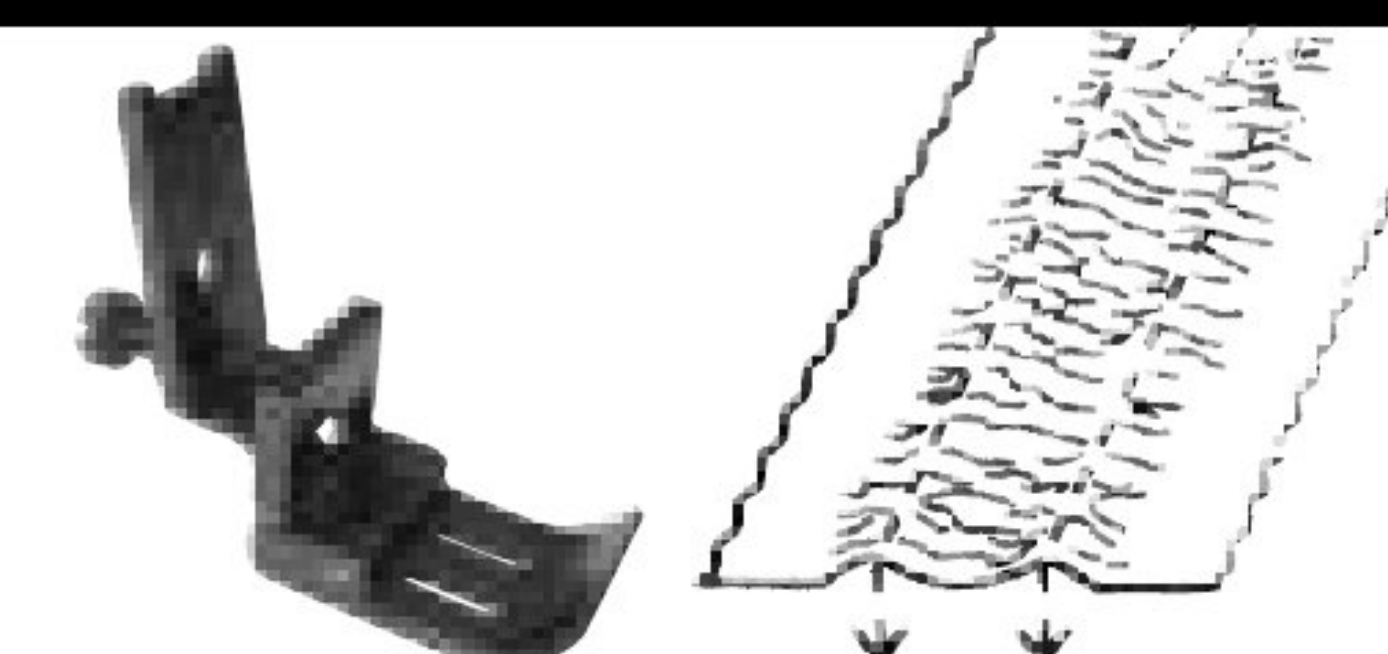
**AUTO FOOT LIFTER**  
#AK-118

## PART FOR SINGER

FOR Class: LU563



**HOOK & GIB ONLY NO BASE**  
#B-1830-563-000



**DOUBLE NEEDLE  
RUFFLING PRESSER FOOT**  
#112W952-1/4

## PARTS FOR PEGASUS

FOR Classes:  
W542-05, BX256



**PRESSER FOOT  
COMPLETE**  
#257324A56

FOR Classes:  
W664-05B



**PRESSER FOOT  
COMPLETE**  
#257421-56

WE ARE MASTER DISTRIBUTORS FOR GENUINE BROTHER, KANSAI, MITSUBISHI, PEGASUS, SEIKO & SIRUBA PARTS



**PART FOR EASTMAN**

FOR Class: 627



**1-1/4 STROKE  
CONNECTING ROD**  
#664C1-5

**PART FOR FISHBEIN**

**CAM LOOPER  
ASSEMBLY**  
#11310

**PART FOR REECE**

FOR Class: 103



**CLUTCH BEARING**  
#01-7624-0-000

**PART FOR YAMATO**

FOR Class: DC4-104



**UPPER KNIFE  
CARBIDE**  
#CT37469

**PARTS FOR UNION SPECIAL**

FOR Class: 53100



**LOOPER**  
#53108D

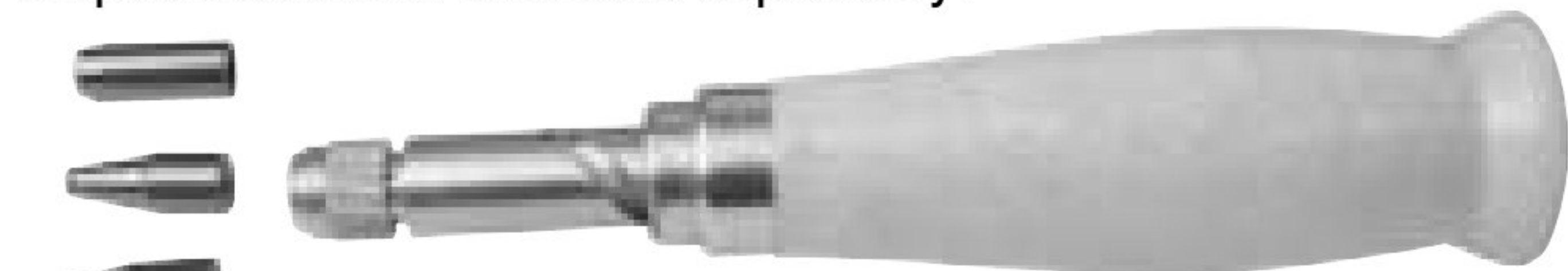
FOR Class: 51100, 56100



**UPPER FEEDER**  
#51126N

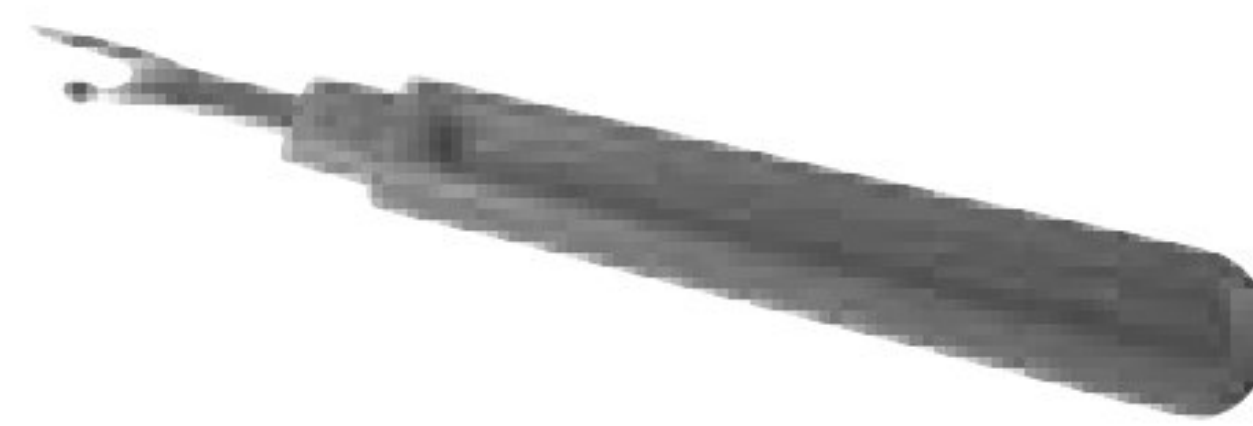
**SCREW PUNCH SET**

- Handy Hole Punch for cutting precision holes in leather, cardboard, plastics and fabrics.
- Pushing on the molded wood handle creates a powerful turning motion to easily cut through many materials.
- Screw and bit mechanism made of precision milled brass.
- Molded wood handle fits comfortable in the palm of the hand.
- Comes complete with five hardened steel bits: 2.0mm (5/64"), 2.5mm (3/32"), 3.2mm (1/8"), 4.0mm (5/32") and 5.0mm (13/64").
- Great for engineers, designers, sample rooms and hobbyists.
- Replaceable bits available separately.



**#SP SCREW PUNCH W/5 TIPS**  
**ALSO AVAILABLE:**

- #SP2 CUTTING BIT 2.0mm F/SCREW PUNCH**
- #SP2.5 CUTTING BIT 2.5mm F/SCREW PUNCH**
- #SP3.2 CUTTING BIT 3.2mm F/SCREW PUNCH**
- #SP4 CUTTING BIT 4.0mm F/SCREW PUNCH**
- #SP5 CUTTING BIT 5.0mm F/SCREW PUNCH**

**MISCELLANEOUS ITEMS**

- Made of top quality surgical steel.
- Long lasting sharpness for easier stitch removal in fabrics.
- Complete with safety ball and cap.

**SEAM RIPPER BLUE  
FLAT HANDLE**  
#115R



- Special razor sharp curve glides through surged stitches.
- Cuts many stitches at once.
- Cuts instead of pokes.
- Handle & safety cover made of plastic.

**5" RAZOR SHARP  
SEAM RIPPER**  
#116RZ

**DIAMOND FILES**

- Made with a hard nickel bond on a hardened steel blank for longer life & wear.
- Comes in 10 shapes: flat, square, half-round, round, three-square, warding, crochet, crossing, barrette and knife.
- For use on carbide, ceramics, hardened steel and alloys.
- Perfect for filing off sharp edges, reshaping cuts or reaming drilled holes.
- Handles are vinyl coated for safety & comfort.

**DIAMOND FILES #DIAF**

**DIGITAL STOP WATCHES**

Professional 16 dual split relay memory function. Split counter to 999 with a 30 hour range and 1/100 second resolution. Includes rapid memory review and displays true split count. Computes and recalls average lap split. Ideal for professional tasks.

**#A725MXT** (shown at left)

**ALSO AVAILABLE:** 50 dual split memory relay memory function.

**#A740MXT** (shown at right)

**PORTABLE CANVAS BASKETS**

- Used in factory, laundry, hospital and many other material handling operations.
- Constructed of heavy duty canvas material, canvas pulling handles on both ends, leather trim on the upper railing, a steel platform and large premium ball bearing casters.
- Easily assembled with two wrenches (included).
- Available for:  
6, 8, 10, 12, 14, 16,  
18 and 20 bushels.
- Individually packaged in 4" deep flat cartons. Can be shipped by UPS.



- #CB6 6BU CANVAS BASKET 26x20x28 W/3" CASTERS**
- #CB8 8BU CANVAS BASKET 29x23x30 W/3" CASTERS**
- #CB10 10BU CANVAS BASKET 33x25x28 W/3" CASTERS**
- #CB12 12BU CANVAS BASKET 35.5x27.5x30 W/3" CASTERS**
- #CB14 14BU CANVAS BASKET 40.5x28x28 W/4" CASTERS**
- #CB16 16BU CANVAS BASKET 42.5x30x30 W/4" CASTERS**
- #CB18 18BU CANVAS BASKET 48x30x30 W/4" CASTERS**
- #CB20 20BU CANVAS BASKET 48x33x30 W/4" CASTERS**

**PLEASE CALL US FOR RACING PULLERS, METERING DEVICES AND TAPE FEEDERS!**