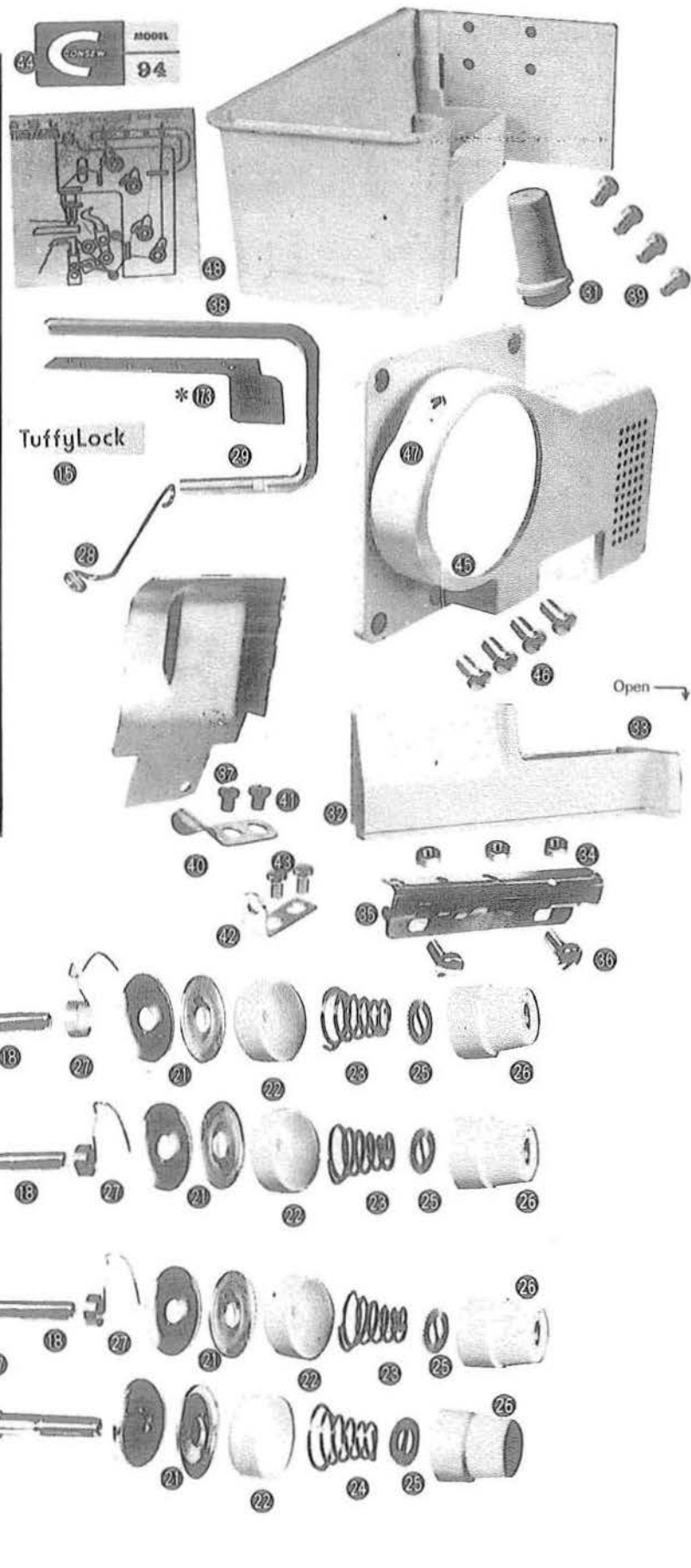


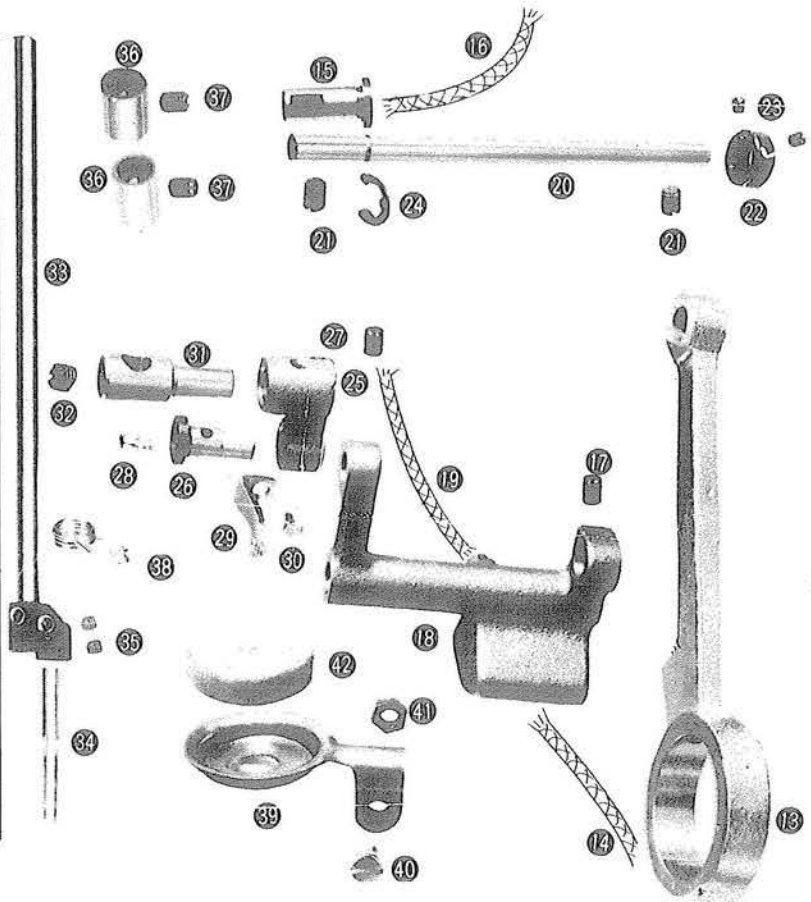
2. MICELLANEOUS COVER * 10

Ref. No.	Parts No.	Description	Qt.
1	320801	Front Cover (Complete)	1
2	320989	Front Cover Brand Plate	1
3	6033	Front Cover Screw	7
4	320902	Thread Tention Plate	4
5	320903	Thread Tension Post	4
6	6091	Thread Tension Post Washer	4
7	320904	Thread Tension Post Nut	4
8	320905	Thread Tension Disc	8
9	320906	Thread Tension Spring Cap	4
10	320907	Thread Tension Spring	3
11	320908	Thread Tension Spring	1
12	320909	Thread Tension Spring Bushing	4
13	320910	Thread Tension Thumb Nut	4
14	320911	Thread Tension Take-up Spring	3
15	320912	Thread Guide	1
16	320998	Hundle	1
17	6061	Handle Set Screw	1
18	320817	Needle Bar Guard	1
19	320805	Looper Cover	1
20	320950	Looper Cover Opening Mark	1
21	6084	Looper Cover Nut	3
22	320806	Looper Cover Hinge Complete	1
23	6086	Looper Cover Hinge Screw	2
24	320813	Upper Knife Guard	1
25	320815	Side Box Complete	1
26	6086	Side Box Screw	4
27	320816	Side Box Lock Spring	1
28	6004	Side Box Lock Spring Screw	2
29	320812	Looper Cover Lock Bracket	1
30	6086	Looper Cover Lock Bracket Screw	2
31	320990	Model Plate	1
32	320946	Drive Pulley Cover	1
33	6086	Drive Pulley Cover Screw	4
34	320949	Driving Mark	1
35	320916	Threading Mark	1
36	* 310839	Front Cover Thread Guide	1



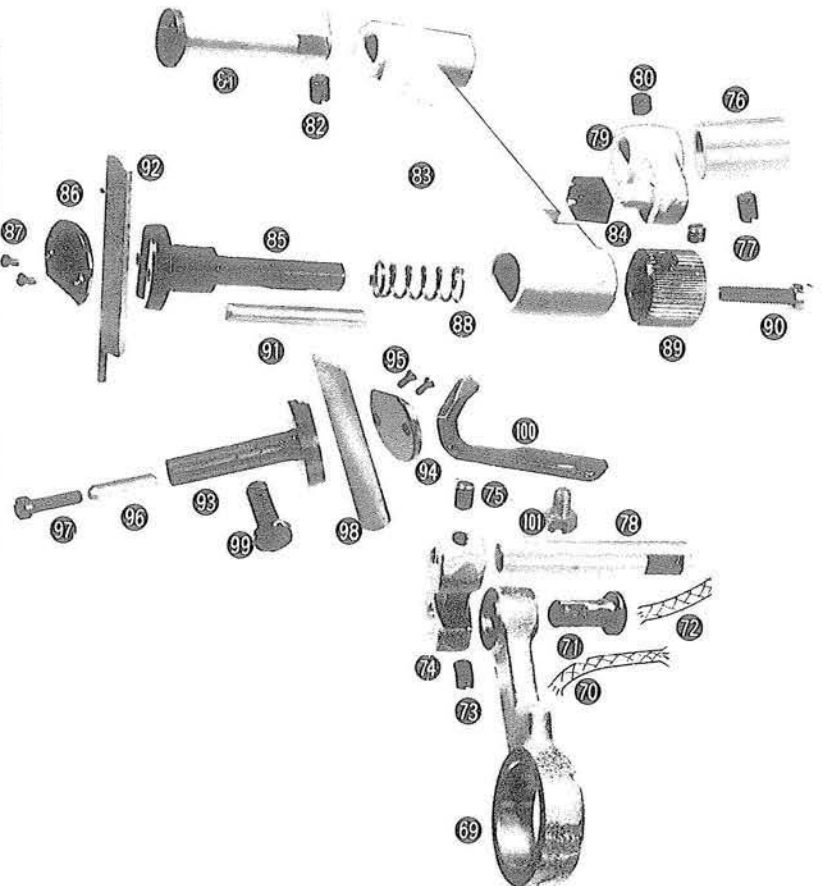
5. NEEDLE DRIVE MECHANISM

Ref. No.	Parts No.	Description	Qt.
15	320201	Needle Bar Drive Connection	1
16	320943-2	Needle Bar Drive Connection Oil Wick	1
18	320202	Needle Bar Drive Connection Set Pin	1
19	320943-1	Needle Bar Drive Connection Set Pin Oil Wick	1
20	6011	Needle Bar Drive Connection Set Pin Screw	1
21	320203	Needle Bar Drive Arm	1
22	320943-1	Needle Bar Drive Arm Oil Wick	1
23	320242	Needle Bar Drive Arm Pivot Shaft	1
24	6011	Needle Bar Drive Arm Pivot Shaft Screw	2
25	310244	Needle Bar Drive Arm Pivot Shaft Collar	1
26	6071	Needle Bar Drive Arm Pivot Shaft Collar Screw	2
27	310243	Needle Bar Drive Arm Stopping	1
28	320207	Needle Bar Drive Link	1
29	310202	Needle Bar Drive Link Pin	1
30	6011	Needle Bar Drive Link Pin Screw	1
31	320944	Needle Bar Drive Link Pin Oil Felt	1
32	320213	Needle Bar Drive Link Thread Guide	1
33	6072	Needle Bar Drive Link Thread Guide Screw	1
34	320208	Needle Bar Connecting Bracket	1
35	6021	Needle Bar Connecting Bracket Screw	1
36	320209	Needle Bar Complete with 320211	1
37	320211	Needle Bar Clamp See 320209	1
38	320212	Needle, Size No. 14	2
39	6024	Needle Clamp Screw	2
40	320210	Needle Bar Bushing	2
41	6022	Needle Bar Bushing Screw	2
42	320214	Needle Thread Guide	1
43	320941	Oil Cap	1
44	6086	Oil Cap Screw	1
45	6063	Oil Cap Nut	1
46	320942	Oil Cap Felt	1



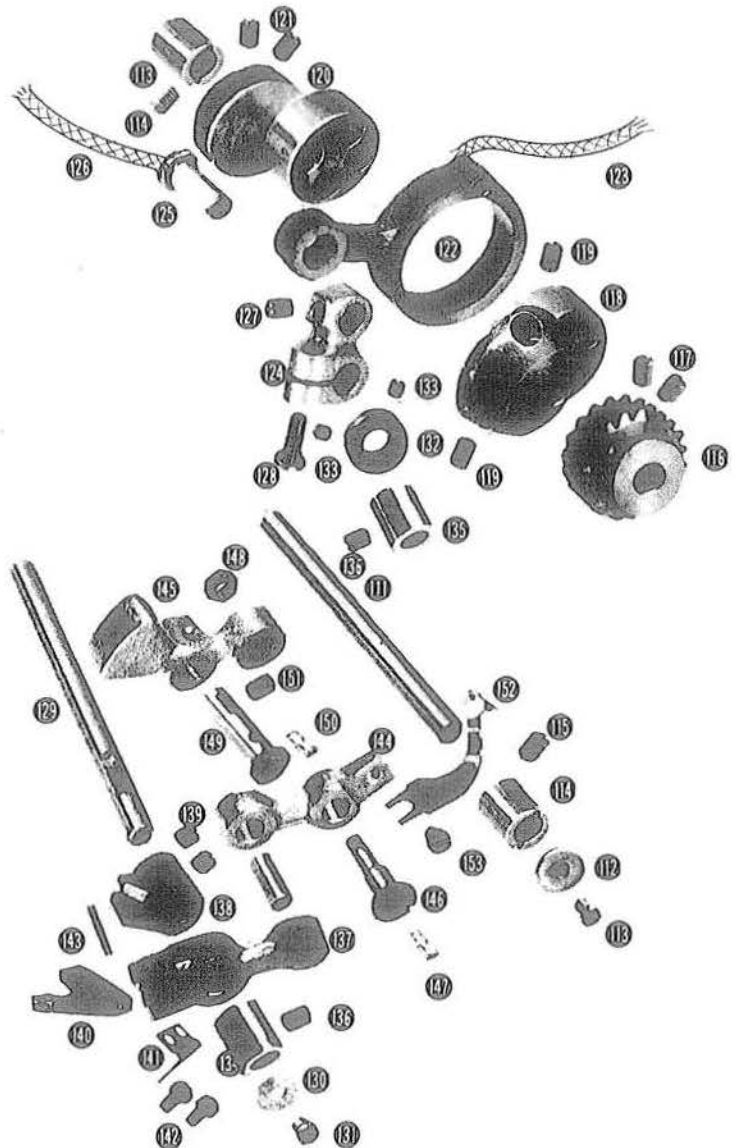
7. UPPER & LOWER KNIFE MECHANISM

Ref. No.	Parts No.	Description	Qt.
69	320401	Upper Knife Drive Connection	1
70	320943-2	Upper Knife Drive Connection Oil Wick	1
71	320202	Upper Knife Drive Connection Pin	1
72	320943-2	Upper Knife Drive Connection Pin Oil Wick	1
73	6011	Upper Knife Drive Connection Pin Screw	1
74	320402	Upper Knife Drive Crank	1
75	6011	Upper Knife Drive Crank Screw	1
76	320403	Upper Knife Drive Shaft Bushing	1
77	6011	Upper Knife Drive Shaft Bushing Screw	1
78	320404	Upper Knife Drive Shaft	1
79	320405	Upper Knife Drive Arm Complete	1
80	320406	Upper Knife Drive Arm Pin	1
81	6022	Upper Knife Drive Arm Pin Screw	1
82	320407	Upper Knife Lever Shaft	1
83	6011	Upper Knife Lever Shaft Screw	1
84	320408	Upper Knife Lever	1
85	320423	Upper Knife Arm Pin Drive Slider	1
86	320409	Upper Knife Carrier	1
87	320410	Upper Knife Carrier Cap Plate	1
88	6011	Upper Knife Carrier Cap Plate Screw	2
89	320411	Upper Knife Clamp Spring	1
90	320412	Upper Knife Guide	1
91	6022	Upper Knife Guide Screw	1
92	320413	Upper Knife Clamp Pin	1
93	320414	Upper Knife	1
94	320415	Lower Knife Carrier	1
95	320410	Lower Knife Carrier Cap Plate	1
96	6011	Lower Knife Carrier Cap Plate Screw	2
97	320416	Lower Knife Clamp Pin	1
98	6012	Lower Knife Clamp Screw	1
99	320417	Lower Knife	1
100	6061	Lower Knife Carrier Screw	1
101	320218	Needle Guard	1
102	6025	Needle Guard Set Screw	1



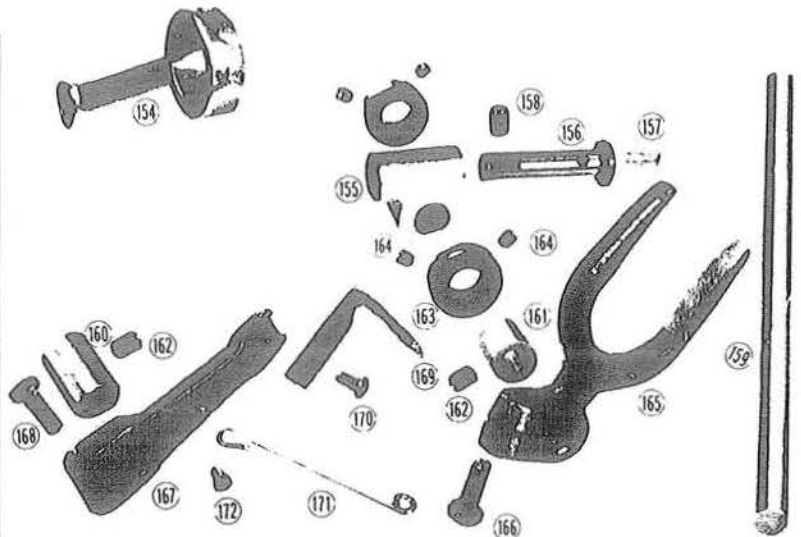
9. GEAR SHAFT & OVER LOCK LOOPER DRIVE MECHANISM

Ref. No.	Parts No.	Description	Qt.
ⓐ	320108	<i>Gear Shaft</i>	1
ⓑ	320611	<i>Gear Shaft Thrust Washer</i>	1
ⓒ	6062	<i>Gear Shaft Thrust Washer Screw</i>	1
ⓓ	320109	<i>Eccentric Bushing</i>	2
ⓔ	6011	<i>Eccentric Bushing Screw</i>	2
ⓕ	320110	<i>Miter Gear</i>	1
ⓖ	6011	<i>Miter Gear Screw</i>	2
ⓗ	320111	<i>Looper Drive Eccentric</i>	1
ⓘ	6011	<i>Looper Drive Eccentric Screw</i>	2
ⓙ	320112	<i>Looper Rocker Shaft Drive Eccentric</i>	1
ⓚ	6011	<i>Looper Rocker Shaft Drive Eccentric Screw</i>	2
ⓛ	320601	<i>Looper Drive Connection</i>	1
ⓜ	320943-3	<i>Looper Drive Connection Oil Wick</i>	1
ⓝ	320602	<i>Looper Drive Crank</i>	1
ⓞ	320202	<i>Looper Drive Connection Pin</i>	1
ⓟ	320943-3	<i>Looper Drive Connection Pin Oil Wick</i>	1
ⓠ	6011	<i>Looper Drive Connection Pin Screw</i>	1
ⓡ	6061	<i>Looper Drive Crank Screw</i>	1
ⓢ	320603	<i>Looper Shaft</i>	1
ⓣ	320611	<i>Looper Shaft Thrust Washer</i>	1
ⓤ	6022	<i>Looper Shaft Thrust Washer Screw</i>	1
ⓖ	320604	<i>Looper Shaft Collar</i>	1
ⓗ	6071	<i>Looper Shaft Collar Screw</i>	2
ⓘ	320403	<i>Looper Shaft Bushing(Front)</i>	1
ⓙ	320705	<i>Looper Shaft Bushing(Rear)</i>	1
ⓚ	6011	<i>Looper Shaft Bushing Screw</i>	2
ⓛ	320605	<i>Looper Link(Lower) Complete with 320606</i>	1
ⓜ	320606	<i>Looper Link(Lower) Set Pin</i>	1
ⓝ	320944	<i>Looper Link(Lower) Set Pin Oil Felt</i>	1
ⓞ	320607	<i>Looper Connected Crank</i>	1
ⓟ	6022	<i>Looper Connected Crank Screw</i>	2
ⓠ	320608	<i>Looper Connected Lever</i>	1
ⓡ	320609	<i>Looper Connected Lever Spring</i>	1
ⓢ	6032	<i>Looper Connected Lever Spring Screw</i>	2
ⓣ	320610	<i>Looper Connected Lever Roll Pin</i>	1
ⓤ	320612	<i>Looper Lever</i>	1
ⓖ	320613	<i>Looper Link(Upper)</i>	1
ⓗ	320614	<i>Looper Link(Upper) Set Pin</i>	1
ⓘ	320944	<i>Looper Link(Upper) Set Pin Oil Felt</i>	1
ⓙ	6063	<i>Looper Link(Upper) Set Nut</i>	1
ⓚ	320615	<i>Looper Link(Upper) Pivot Pin</i>	1
ⓛ	320944	<i>Looper Link(Upper) Pivot Pin Oil Felt</i>	1
ⓜ	6011	<i>Looper Link(Upper) Pivot Pin Screw</i>	1
ⓞ	320616	<i>Looper</i>	1
ⓟ	6072	<i>Looper Set Screw</i>	1



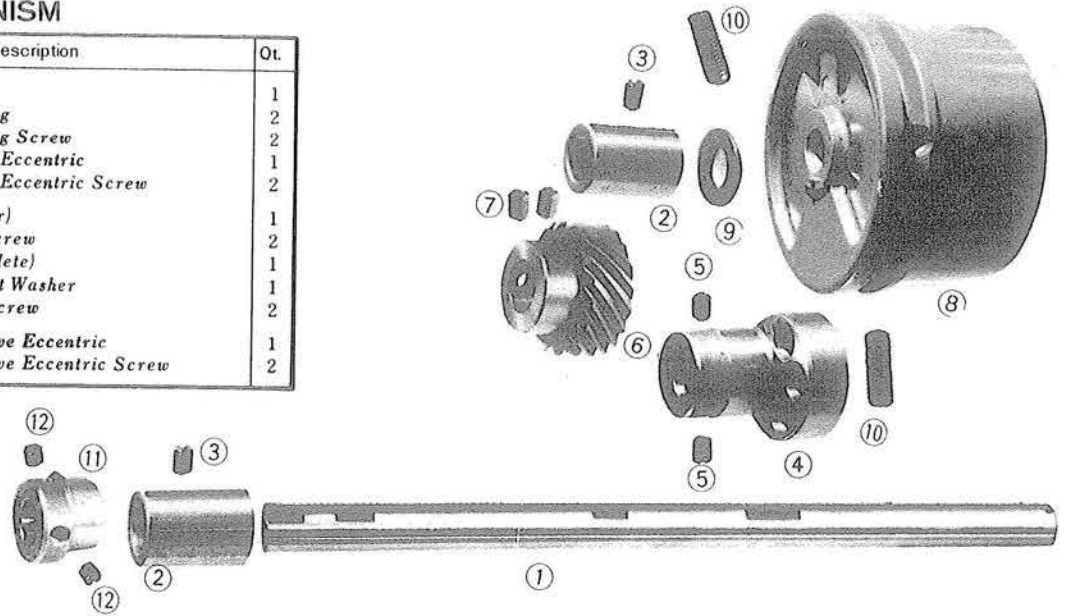
10. DOUBLE CHAIN LOOPER MECHANISM

Ref. No.	Parts No.	Description	Qt.
ⓐ	320701	<i>Looper Lever Connecting Rod</i>	1
ⓑ	320702	<i>Looper Lever Connecting Rod Link</i>	1
ⓒ	320703	<i>Looper Lever Connecting Rod Link Pin</i>	1
ⓓ	320911	<i>Looper Lever Connecting Rod Link Pin Oil Wick Felt</i>	1
ⓔ	6011	<i>Looper Lever Connecting Rod Link Pin Screw</i>	1
ⓕ	320704	<i>Looper Shaft</i>	1
ⓖ	320403	<i>Looper Shaft Bushing Front</i>	1
ⓗ	320705	<i>Looper Shaft Bushing Rear</i>	1
ⓘ	6011	<i>Looper Shaft Bushing Screw</i>	2
ⓙ	320604	<i>Looper Shaft Collar</i>	2
ⓚ	6071	<i>Looper Shaft Collar Screw</i>	1
ⓛ	320706	<i>Looper Rocker Crank</i>	1
ⓜ	6064	<i>Looper Rocker Crank Screw</i>	1
ⓞ	320707	<i>Looper Lever</i>	1
ⓟ	6064	<i>Looper Lever Screw</i>	1
ⓠ	320708	<i>Looper</i>	1
ⓡ	6072	<i>Looper Screw</i>	1
ⓢ	320709	<i>Thread Take-up</i>	1
ⓣ	6072	<i>Thread Take-up Screw</i>	1



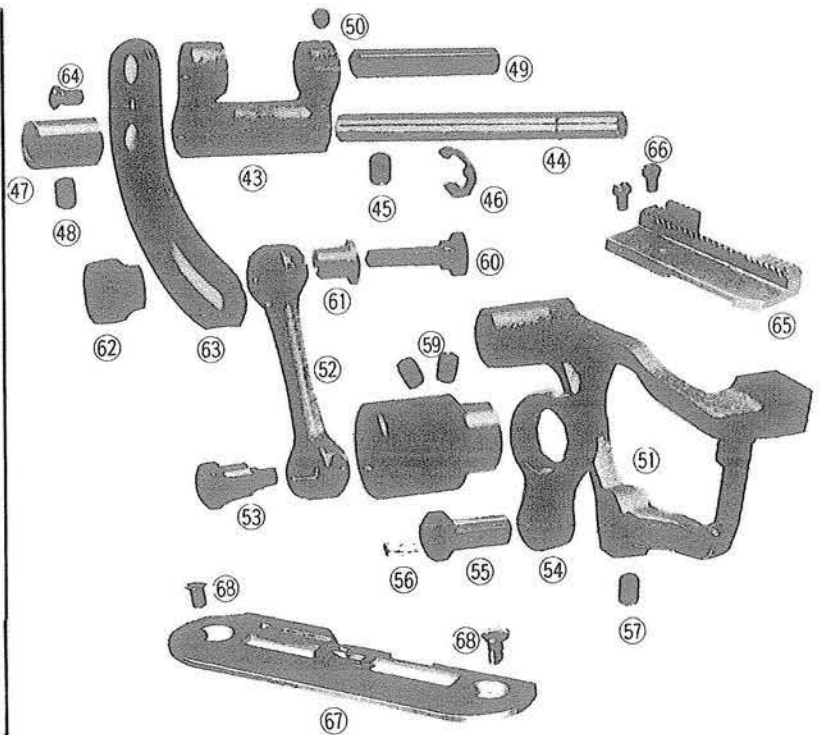
4. MAIN SHAFT MECHANISM

Ref. No.	Parts No.	Description	Qt.
①	320101	Main Shaft	1
②	320102	Main Shaft Bushing	2
③	6011	Main Shaft Bushing Screw	2
④	320104	Needle Bar Drive Eccentric	1
⑤	6011	Needle Bar Drive Eccentric Screw	2
⑥	320105	Miter Gear (Driver)	1
⑦	6011	Miter Gear Set Screw	2
⑧	320106	Drive Pulley (Complete)	1
⑨	320114	Drive Pulley Thrust Washer	1
⑩	6012	Drive Pulley Set Screw	2
⑪	320107	Looper Lever Drive Eccentric	1
⑫	6022	Looper Lever Drive Eccentric Screw	2



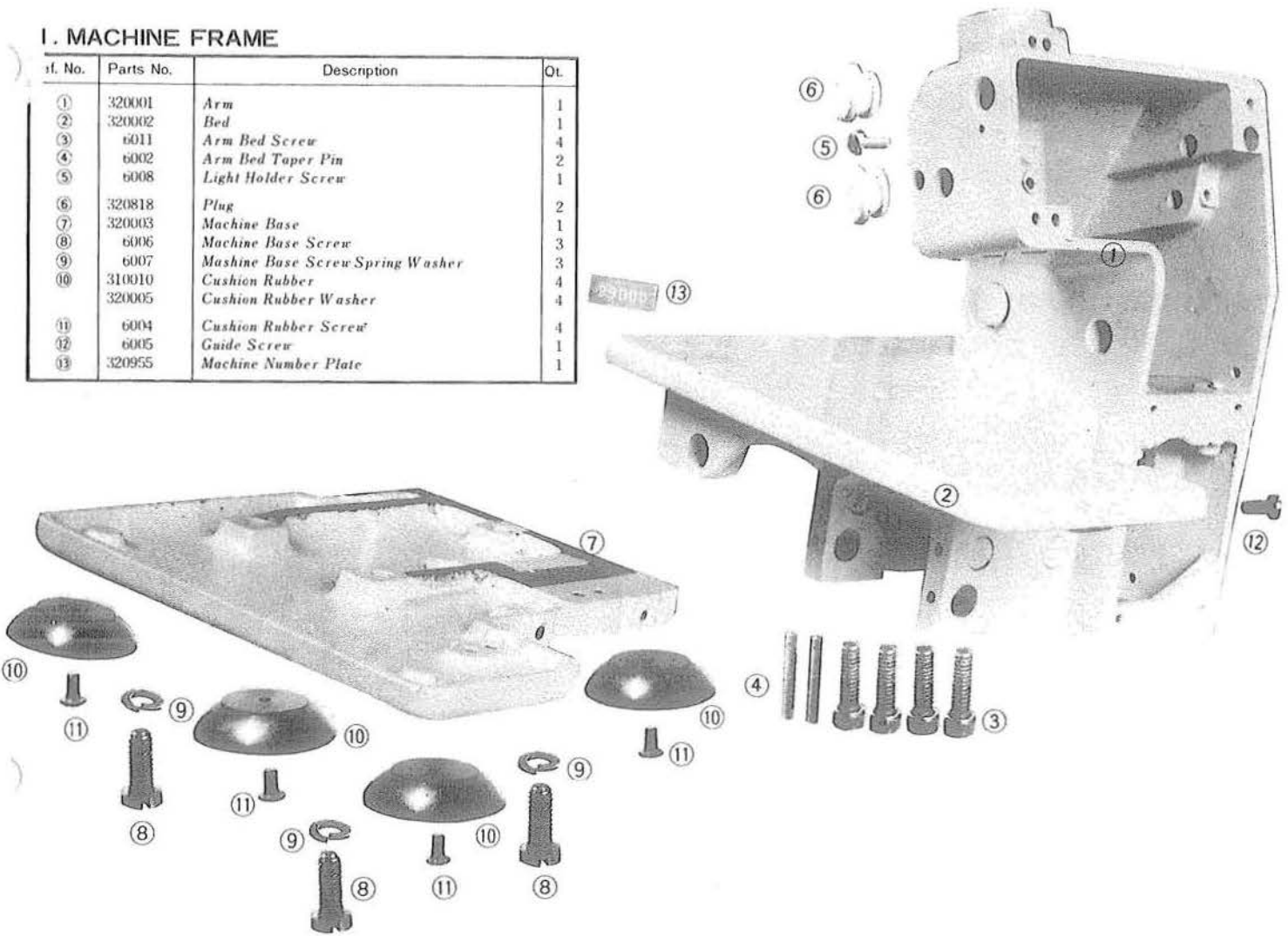
6. FEED MECHANISM

Ref. No.	Parts No.	Description	Qt.
④③	320323	Feed Drive Link	1
④④	310346	Feed Drive Link Pin	1
④⑤	6011	Feed Drive Link Pin Screw	1
④⑥	310243	Feed Drive Link Pin Stop Ring	1
④⑦	310344	Feed Drive Link Pin Bushing	1
④⑧	6011	Feed Drive Link Pin Bushing Screw	1
④⑨	320325	Feed Bar Hinge Pin	1
⑤①	6071	Feed Bar Hinge Pin Screw	1
⑤②	320306	Feed Bar	1
⑤③	320307	Feed Bar Connecting Rod	1
⑤④	320312	Feed Bar Connecting Rod Set Pin	1
⑤⑤	320327	Feed Bar Lift Connection	1
⑤⑥	320202	Feed Bar Lift Connection Pin	1
⑤⑦	320944	Feed Bar Lift Connection Pin Oil Felt	1
⑤⑧	6022	Feed Bar Lift Connection Pin Screw	1
⑤⑨	320319	Feed Drive Eccentric	1
⑤⑩	6011	Feed Drive Eccentric Screw	2
⑤⑪	320322	Feed Regulator Stop Screw	1
⑤⑫	320321	Feed Regulator Stop Screw Bushing	1
⑤⑬	320320	Feed Regulator Stop Nut	1
⑤⑭	320318	Feed Regulator	1
⑤⑮	6072	Feed Regulator Set Screw	1
⑤⑯	310327	Feed Dog	1
⑤⑰	6032	Feed Dog Screw	2
⑤⑱	310328	Needle Plate	1
⑤⑲	6033	Needle Plate Screw	2



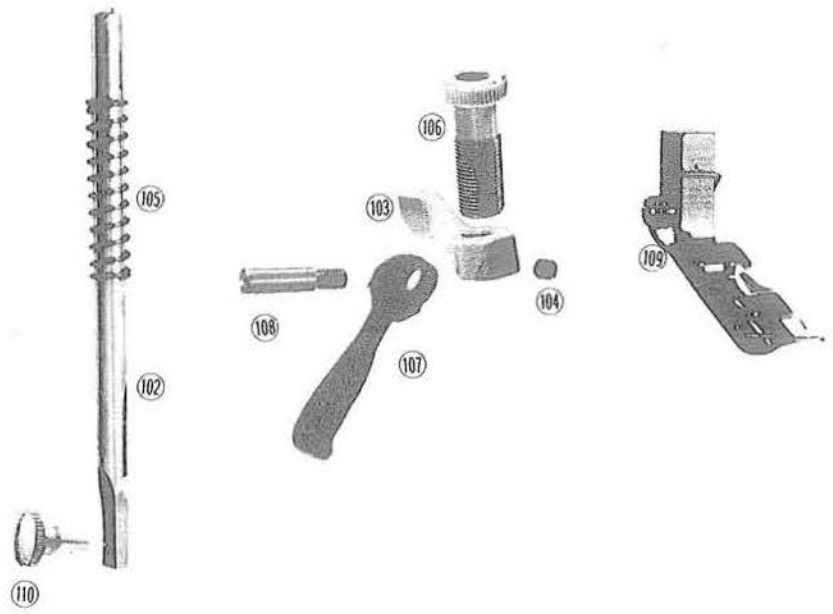
I. MACHINE FRAME

Ref. No.	Parts No.	Description	Qt.
①	320001	Arm	1
②	320002	Bed	1
③	6011	Arm Bed Screw	4
④	6002	Arm Bed Taper Pin	2
⑤	6008	Light Holder Screw	1
⑥	320818	Plug	2
⑦	320003	Machine Base	1
⑧	6006	Machine Base Screw	3
⑨	6007	Machine Base Screw Spring Washer	3
⑩	310010	Cushion Rubber	4
	320005	Cushion Rubber Washer	4
⑪	6004	Cushion Rubber Screw	4
⑫	6005	Guide Screw	1
⑬	320955	Machine Number Plate	1



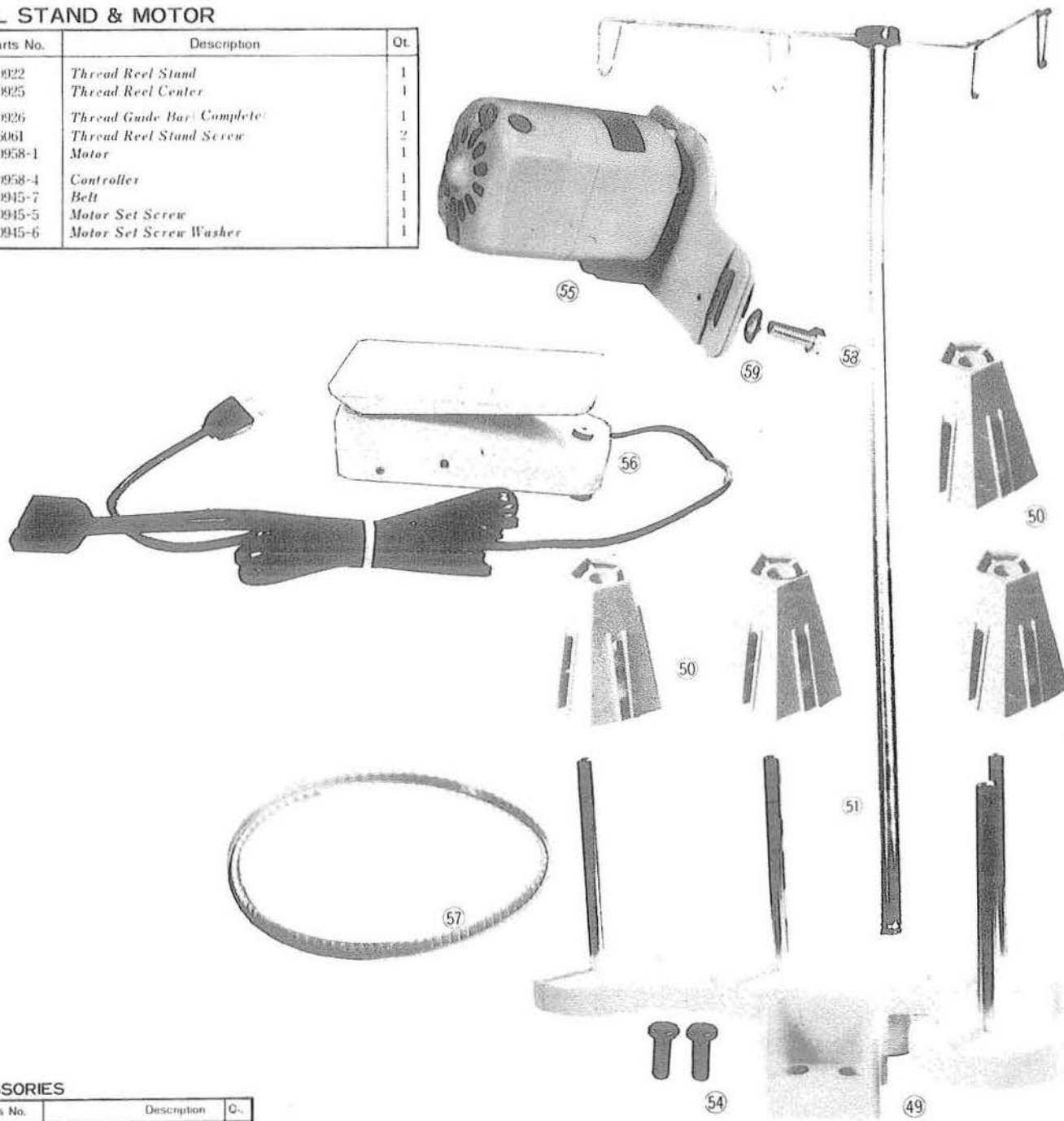
8. PRESSER FOOT & LIFTING MECHANISM

Ref. N.	Parts No.	Description	Qt.
⑩②	320501	Presser Foot Bar	1
⑩③	320502	Presser Foot Bar Guide Bracket	1
⑩④	6022	Presser Foot Bar Guide Bracket Screw	1
⑩⑤	320503	Presser Foot Pressure Spring	1
⑩⑥	320504	Presser Foot Pressure Adjusting Thumb Screw	1
⑩⑦	320505	Presser Foot Lifting Hand Lever	1
⑩⑧	320506	Presser Foot Lifting Hand Lever Pivot Pin	1
⑩⑨	320507	Presser Foot Complete	1
⑩⑩	6051	Presser Foot Screw	1



3. REEL STAND & MOTOR

Ref. No.	Parts No.	Description	Qt.
49	320922	Thread Reel Stand	1
50	320925	Thread Reel Center	1
51	320926	Thread Guide Bar Complete	1
54	6061	Thread Reel Stand Screw	2
55	320958-1	Motor	1
56	320958-4	Controller	1
57	320945-7	Belt	1
58	320945-5	Motor Set Screw	1
59	320945-6	Motor Set Screw Washer	1



11. ACCESSORIES

Ref. No.	Parts No.	Description	Qt.
1	320981	Accessories Box	1
2	320982	Screw Driver	1
3	320983	Tweezers	1
4	320112	Needles, Size No. 11	5
5	320984	Oiler	1
6	320985	Brush	1
7	320414	Upper Knife	1
8	320986	Gauge Plate	1
9	320987	Walt Guide	1
10	6074	Walt Guide Screw	1
11	320991	Allen Screw Driver	1
12	320931	Thread Stripping Disc	1
13	320988	Machine Cover	1

