



**HG9910 -BZ /HG9920 -BZ**

## **罗拉车系列**

**Post bed compound feed lockstitch sewing  
machine with driven roller and direct motor**

## **零件样本 Parts Catalog**

**上海标准海菱缝制机械有限公司  
SHANGHAI BIAOZHUN HAILING SEWING MACHINERY CO., LTD.**

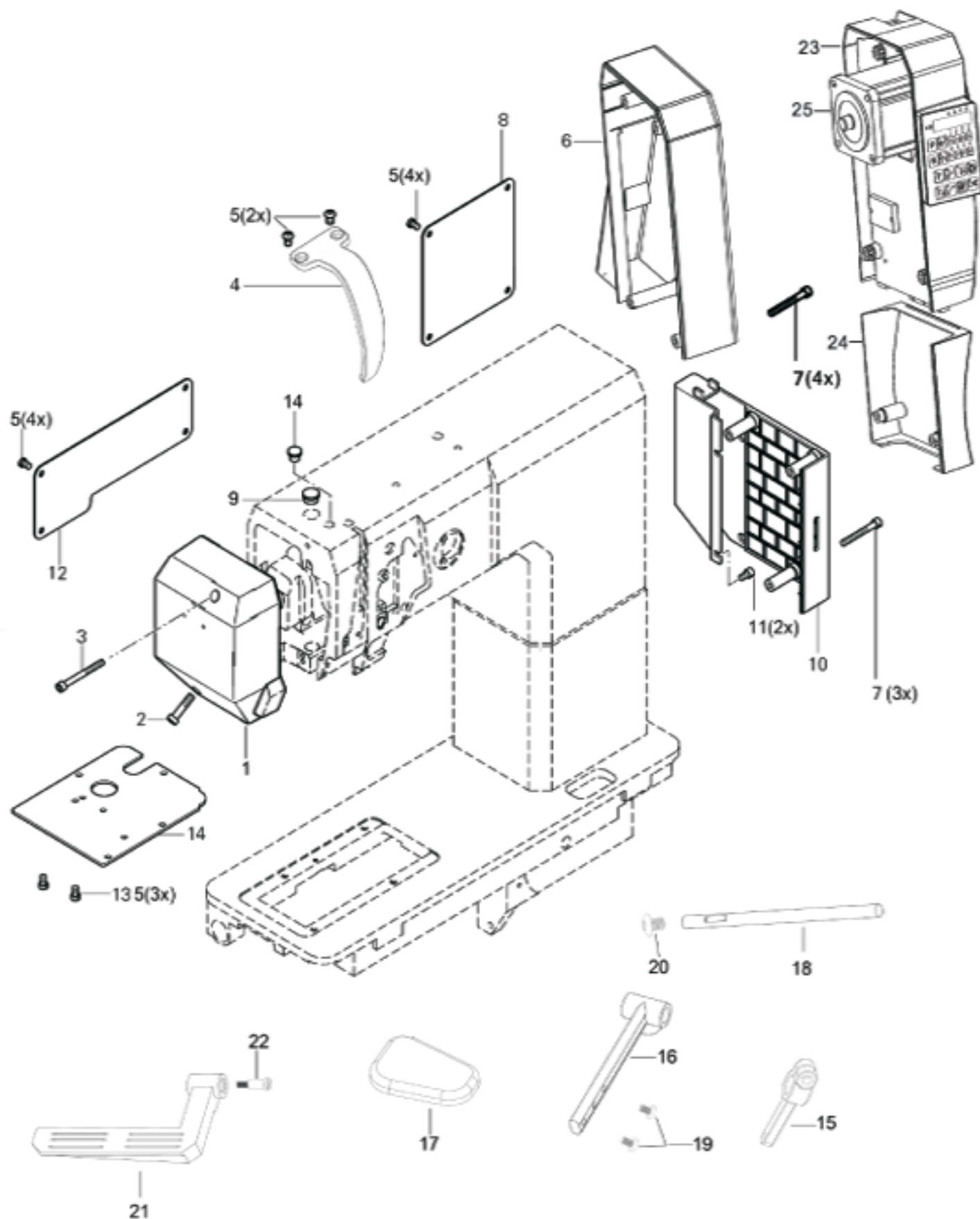
## CONTENTS 目次

MAIN FRAME AND COVER PARTS 本體機構和護蓋零件.....	1
THREAD TENSION MECHANISM 縫綫調整機構.....	3
UPPER CLUTCH SET MECHANISM 上离合器机构<一>,<二>.....	5
ROLLER PRESSER FOOT MECHANISM 輪綫組機構.....	7
THREAD TAKE-UP LEVER MECHANISM 天秤機構.....	9
UPPER SHAFT AND BALANCE WHEEL MECHANISM 上軸、皮帶輪機構.....	11
UPPER SIDE SHAFT MECHANISM 上軸心機構.....	13
NEEDLE BAR MECHANISM 針棒機構.....	15
NEEDLE BAR FEED MECHANISM 針棒進給機構.....	17
PRESSER FOOT BAR MECHANISM 押棒機構.....	19
TIMING BELT DRIVING MECHANISM 皮帶傳動機構.....	21
STITCH ADJUSTER MECHANISM 縫目調整機構.....	23
FEED SHAFT MECHANISM 輸送傳動機構.....	25
CLUTCH SET MECHANISM 離合器機構.....	27
ARM PARTS PIEZAS DELABRAZO 機臂零件.....	29
BEDPLATE FEED MECHANISM FOR HG9910 單針中座機構.....	31
BEDPLATE GEAR FEED MECHANISM FOR HG9910 中座齒輪傳動機構.....	33
LEFT AND MIDDLE FEED MECHANISM FOR HG9920 右邊座和中座傳動機構.....	35
LEFT BEDPLATE FEED MECHANISM FOR HG9920 左邊座傳動機構.....	37
RIGHT SIDE BRACKET MECHANISM 右邊座傳動機構.....	39
THREDCL TRIMMER 切綫器機構及其它零件.....	41
THREDCL TRIMMER 切綫器機構及其它零件.....	43
ATOMATIL PRESSER FOOT LIFTER 壓腳自動提升機構.....	45
SPECIAL PARTS 特殊配件.....	47
ACCESSORIES 附件.....	49
EXTERNAL ACCESSORIES HG9910, HG9920 外掛配件.....	50
TROUBLE CAUSE@REMEDY 故障分析及處理方法.....	51

MAIN FRAME AND COVER PARTS  
本體機構和護蓋零件

Ref.No.	Part No.	Name Of Part	Amt.req.		Remarks
			單	雙	
1	XFS-747776	Face Plate 面蓋	1	1	
2	XFS-130245	Screw 螺絲 M5x0.8x25 L	1	1	
3	XFS-130918	Screw 螺絲 M5x0.8x48 L	1	1	
4	XFS-262329	Thread Take-up Cover 天平蓋	1	1	
5	XFS-180223	Screw 螺絲 M5x0.8x8P	10	10	
6	XFS-164827	On the cover 上護罩	1	1	
7	XFS-108258	Screw 螺絲	7	7	
8	XFS-263195	Arm Side Cover 大防砂板	1	1	
9	XFS-011391	Rubber Stopper 膠塞	1	1	
10	XFS-164828	Under the cover 下護罩	1	1	
11	XFS-108222	Screw 螺絲 M5x0.8x10L	5	5	
12	XFS-263194	Small sand plate 小防沙板	1	1	
13	XFS-165408	Screw 螺絲 M5x0.8x8L	1	1	
14	XFS-137001	Rubber plug 膠塞	3	3	
15	XFS-150424	Connecting rod 連接杆	1	1	
16	XFS-150425	Puil lever 拔動杆	1	1	
17	XFS-150426	Spanner 塑膠把手	1	1	
18	XFS-150427	Shaft 軸	1	1	
19	XFS-150428	Screw 螺絲 M4x0.8x6 P	1	1	
20	XFS-150429	Screw 螺絲 M4x0.8x6 Y	1	1	
21	XFS-170914	Backtacking Spanner 倒縫扳手	1	1	
22	XFS-170915	Screw 螺絲 M8x1.25x620 F	1	1	
23	XFS-164829	Electric cabinet 電控箱	1	1	
24	XFS-164830	Convenient cover 護線罩	1	1	
25	XFS-170001	The motor 電機	1	1	
26	XFS-170002	Screw 螺絲 M5x0.8x16 L	1	1	
27	XFS-170003	Screw 螺絲 M5x0.8x25 L	1	1	

MAIN FRAME AND COVER PARTS  
本體機構和護蓋零件

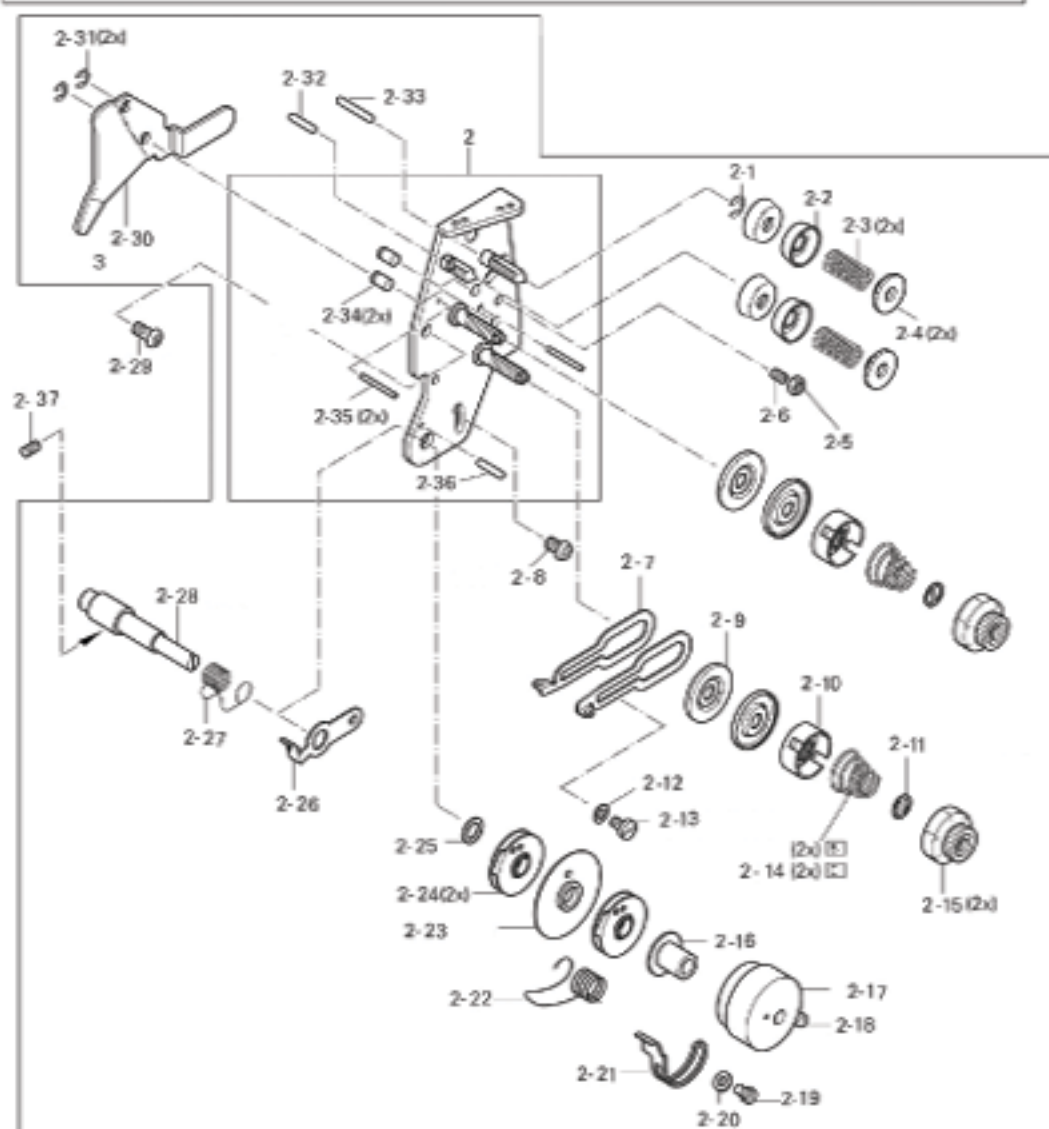
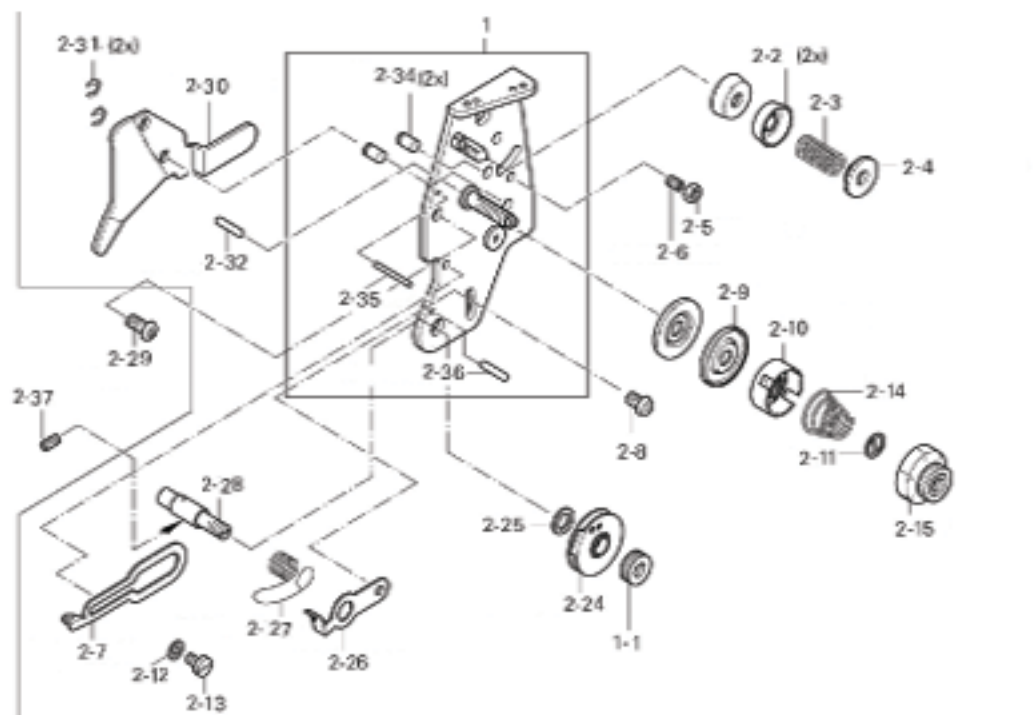




THREAD TENSION MECHANISM  
縫綫調整機構

Ref.No.	Part No.	Name Of Part	Amt.req.		Remarks
			單	雙	
1	XFS-266443	Thread Tension Regulator Assy	單針沙拉組	1	0
1-1	XFS-701522	Nut	螺母	1	0
2	XFS-266445	Thread Tension Regulator Assy	雙針沙拉組	0	1
2-1	XFS-640150	E-Ring	E形卡環	0	1
2-2	XFS-056193	Thread Guide Bracket	過綫孔套	1	2
2-3	XFS-056760	Spring	彈簧	1	2
2-4	XFS-056192	Screw	螺絲	1	2
2-5	XFS-005154	Nut	螺帽	1	1
2-6	XFS-330169	Screw	螺絲	1	1
2-7	XFS-176324	Thread Guide Washer	過綫環	0	2
2-8	XFS-180169	Screw	螺絲	1	1
2-9	XFS-002065	Tension Disc	壓綫盤	2	4
2-10	XFS-002262	Tension Disc Washer	綫調整壓盤	1	2
2-11	XFS-105447	Tension Disc Washer	綫調整墊圈	1	2
2-12	XFS-315090	Washer	華司	1	1
2-13	XFS-172127	Screw	螺絲	1	1
2-14	XFS-010183	Tension Spring	調整彈簧	1	2
2-15	XFS-168194	Nut	螺帽	1	2
2-16	XFS-113027	Pin	定心軸	0	1
2-17	XFS-113023	Bushing	襯套定環	0	1
2-18	XFS-341906	Screw	螺絲	0	1
2-19	XFS-130089	Screw	螺絲	0	1
2-20	XFS-305084	Washer	華司	0	1
2-21	XFS-176327	Tension Release Stud	彈簧調節器	0	1
2-22	XFS-176321	Tension Take-up Spring	吊綫彈簧	0	1
2-23	XFS-176377	Plate	固定板	0	1
2-24	XFS-176373	Tension Release Plate	彈簧盤	1	2
2-25	XFS-176378	Washer	華司	1	1
2-26	XFS-266411	Thread Guide Washer	過綫環	1	1
2-27	XFS-010937	Tension Release Plate	壓板彈簧	1	1
2-28	XFS-176326	Thread Tension Stud	調整螺絲杆	1	1
2-29	XFS-180223	Screw	螺絲	1	1
2-30	XFS-280178	Tension Release Plate	彈簧板	1	1
2-31	XFS-640130	E-Ring	E形卡環	2	2
2-32	XFS-176464	Tension Releasing Pin	松綫梢	1	1
2-33	XFS-176462	Tension Releasing Pin	松綫梢	1	1
2-34	XFS-266414	Pin	固定銷	2	2
2-35	XFS-033109	Tension Releasing Pin	松綫梢	1	2
2-36	XFS-033103	Tension Releasing Pin	松綫梢	1	1
2-37	XFS-330217	Screw	螺絲	1	1

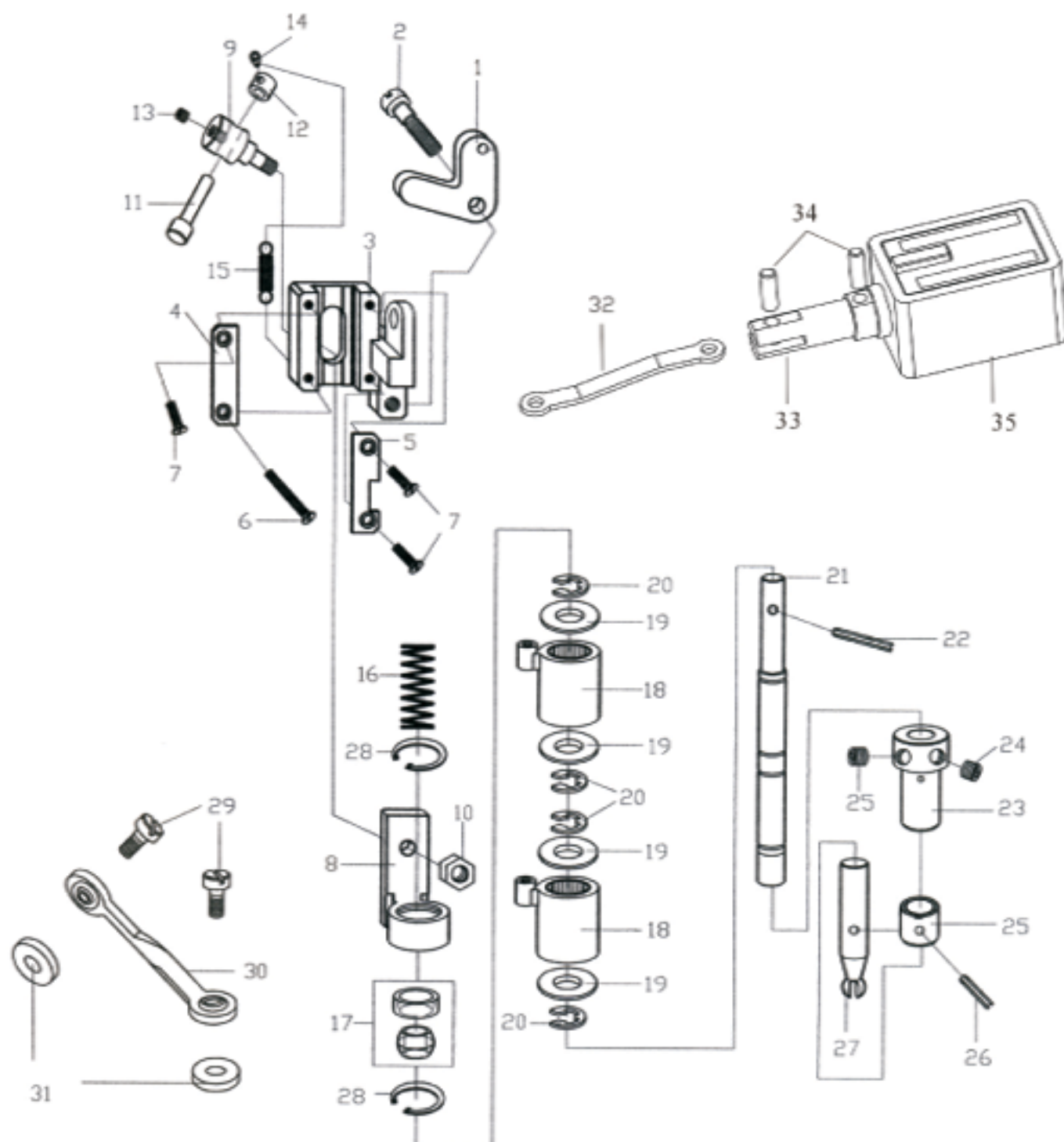
# THREAD TENSION MECHNISM 縫隙綫調整機構



UPPER CLUTCH SET MECHANISM  
上離合器機構(-)

Ref.No.	Part No.	Name Of Part	Amt.req.		Remarks
			單	雙	
1	XFS-1-7	Clutch oflog 上離合器拔叉	1	1	
2	XFS-1-8	Clutch fork screw 上離合器拔叉螺絲	1	1	
3	XFS-1-10	Clutch slide blocka 離合器滑塊座	1	1	
4	XFS-1-11	Slide seat left cover plat 滑塊座左蓋板	1	1	
5	XFS-1-12	Slide seat cover plate right 滑塊右蓋板	1	1	
6	XFS-1-11-1	Heavy head screw 90°沉頭螺絲	1	1	
7	XFS-1-11-2	Heavy head screw 90°沉頭螺絲	3	3	
8	XFS-1-9	Clutch the slider 離合器滑塊	1	1	
9	XFS-1-15	Slider pin 滑塊銷	1	1	
10	XFS-1-15-1	Hexagonal screw 六角螺絲	1	1	
11	XFS-1-16	Slider pin thepin 滑塊銷橫銷	1	1	
12	XFS1-17	Horizontal pin set 橫銷套	1	1	
13	XFS-15-2	Hex head screw sink 內六角沉頭螺絲	1	1	
14	XFS-1-17-1	Inside hexagonal screw 內六角螺絲	1	1	
15	XFS-1-19	Above precision extension spring 拉簧	1	1	
16	XFS-1-18	Lining spring 襯簧	1	1	
17	XFS-756901	Perlin 培林	1	1	
18	XFS-119506	ChanXiangPei Lin group 單向培林組	2	2	
19	XFS-119160	Flat mat 平整	4	4	
20	XFS-640210	Retaining Ring E形扣環	4	4	
21	XFS-1-2	Clutch shaft section 離合器軸上節	1	1	
22	XFS-1-2-1	Spring cylindrical pin 彈簧圓柱銷	1	1	
23	XFS-1-1-4	Clutch on 離合器上	1	1	
24	XFS-1-4-1	Hex head screw sink 內六角沉頭螺絲	2	2	
25	XFS-1-3	Under the clutch 離合器下	1	1	
26	XFS-1-3-1	Elastic cylindrical pin set 定彈性圓柱銷	1	1	
27	XFS-1-1	Clutch next 離合器軸下節	1	1	
28	XFS-660290	Retaining ring C型扣環	2	2	
29	XFS-174176	Screw 螺絲	4	4	
30	XFS-119507	Link 萬向連杆	2	2	
31	XFS-119087	Oil felt 油棉墊	4	4	
32	XFS-170005-1	pull rod 拉杆	1	1	
33	XFS-170005-2	Bars a 拉杆座	1	1	
34	XFS-170005-3	Dowel 銷子	2	2	
35	XFS-170005-5	Electromagnet 電磁	1	1	

UPPER CLUTCH SET MECHANISM  
上離合器機構(-)

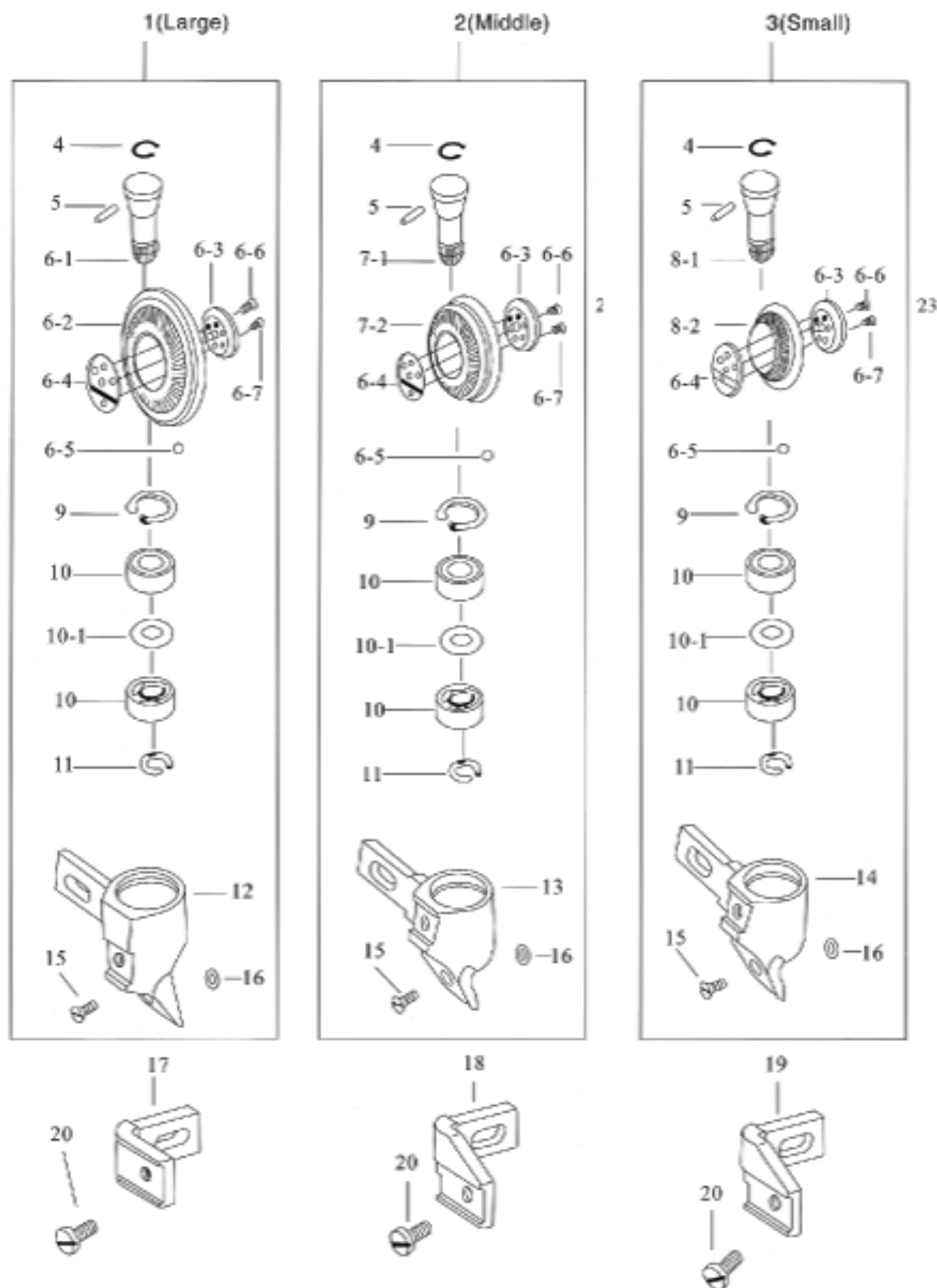


ROLLER PRESSER FOOT MECHNISM  
輪綫組機構

Ref.No.	Part No.	Name Of Part	Amt.req.		Remarks
			單	雙	
1	XFS-119803	Roller Presser Assy. (Large)	輪綫組 (大)	1	1
2	XFS-119803-1	Roller Presser Assy. (Middle)	輪綫組 (中)	1	1
3	XFS-119802	Roller Presser Assy. (Small)	輪綫組 (小)	1	1
4	XFS-119469	Spring Washer	止輪環	1	1
5	XFS-033145	Pin	平行梢	1	1
6	XFS-175109	Gear	齒輪	1	1
6-1	XFS-175109-1	Gear Presser Shaft	傳動軸	1	1
6-2	XFS-175109-2	Gear	齒輪盤	1	1
6-3	XFS-175109-3	Gear Presser Shaft Seat (front)	輪綫軸座 (前)	1	1
6-4	XFS-175109-4	Gear Presser Shaft Seat	輪綫軸座 (後)	1	1
6-5	XFS-175109-5	Ball	鋼珠	1	1
6-6	XFS-175109-6	Screw	螺絲	1	1
6-7	XFS-175109-7	Screw	螺絲	1	1
7	XFS-175107	Gear	齒輪	1	1
7-1	XFS-175107-1	Gear Presser Shaft	傳動輪	1	1
7-2	XFS-175107-2	Gear	齒輪盤	1	1
7-3	XFS-175107-3	Gear Presser Shaft Seat	輪綫軸座	1	1
8	XFS-175108	Gear	齒輪	1	1
8-1	XFS-175108-1	Gear Presser Shaft	傳動輪	1	1
8-2	XFS-175108-2	Gear	齒輪盤	1	1
8-3	XFS-175108-3	Gear Presser Shaft Seat	輪綫軸座	1	1
9	XFS-664290	Retaining Ring	C型扣環	1	1
10	XFS-133116	Ball Bearing	滾珠軸承	1	1
10-1	XFS-133116-1	Washer	華司	1	2
11	XFS-518210	Retaining Ring	C型扣環	1	1
12	XFS-119953	Roller Presser Bracket	輪綫座	1	1
13	XFS-119943	Roller Presser Bracket	輪綫座	1	1
14	XFS-119956	Roller Presser Bracket	輪綫座		1
15	XFS-210043	Screw	螺絲	1	1
16	XFS-119491	Washer	華司	1	1
17	XFS-119807	Guide Seat	輪綫連接座 (大)	1	1
18	XFS-119955	Guide Seat	輪綫連接座 (中)	1	1
19	XFS-119954	Guide Seat	輪綫連接座 (小)	1	1
20	XFS-173174	Screw	螺絲	2	1



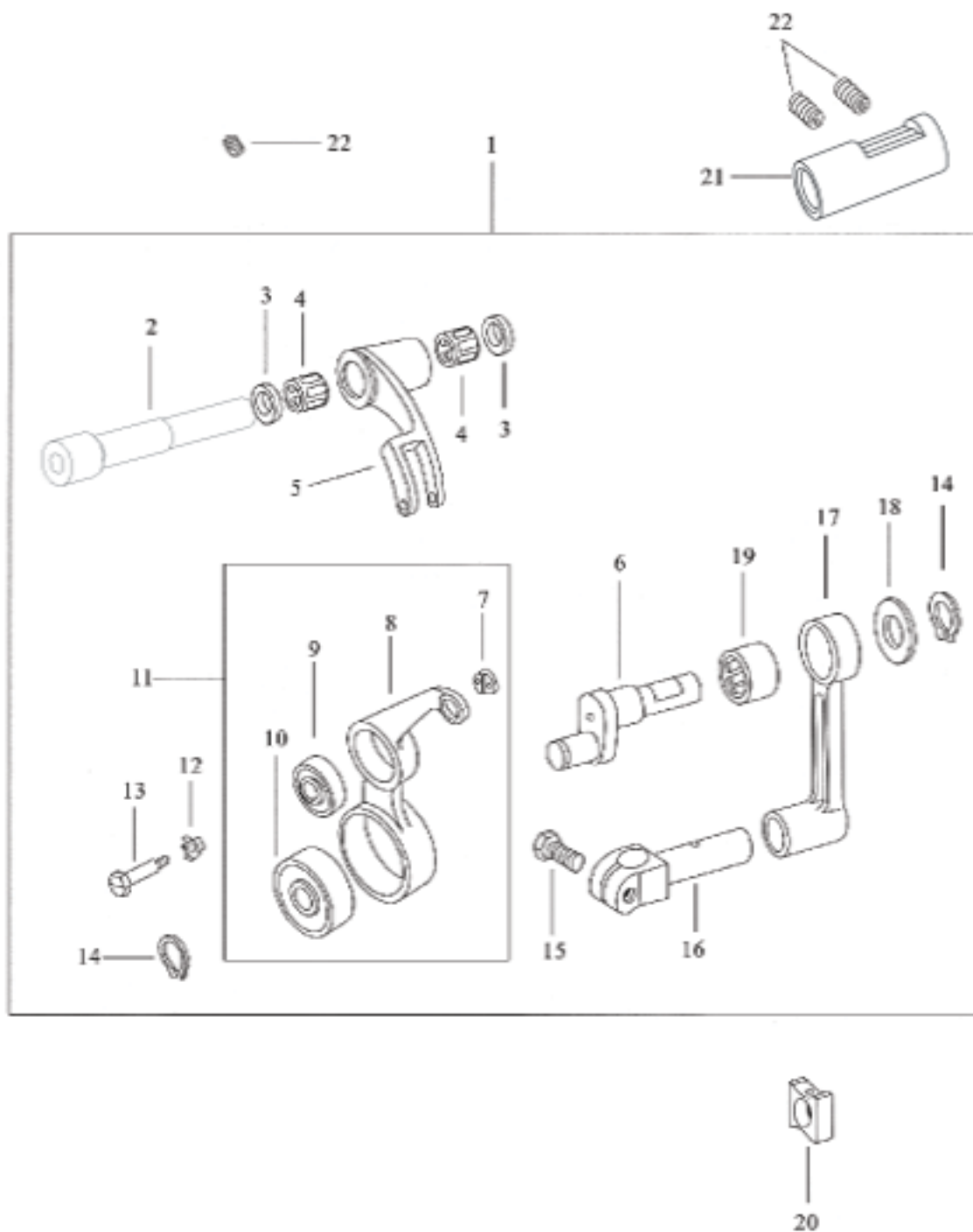
ROLLER PRESSER FOOT MECHNISM  
輪綫組機構



THREAD TAKE-UP LEVER MECHANISM  
天秤機構

Ref.No.	Part No.	Name Of Part	Amt.req.		Remarks
			單	雙	
1	XFS-118084	Thread Take-up Assy	1	1	
2	XFS-176301	Take-up Lever Support Stud	1	1	
3	XFS-168039	Washer	2	2	
4	XFS-215022	Needle bearing	2	2	
5	XFS-119008	Take-up Frame	1	1	
6	XFS-119762	Take-up Crank pin	1	1	
7	XFS-119049	Bushing	1	1	
8	XFS-119007	Take-up Lever	1	1	
9	XFS-167569	Ball Bearing	1	1	
10	XFS-167570	Ball Bearing	1	1	
11	XFS-119006	Take-up Lever	1	1	
12	XFS-168046	Washer	1	1	
13	XFS-168047	Screw	1	1	
14	XFS-610210	Retaining Ring	2	2	
15	XFS-039177	Screw	1	1	
16	XFS-119013	Needle Bar Connecting Stud	1	1	
17	XFS-119765	Needle Bar Connecting Crank Rod	1	1	
18	XFS-119763	Washer	1	1	
19	XFS-218080	Needle Bearing	1	1	
20	XFS-118518	Needle Bar Guide Slide Block	1	1	
21	XFS-176302	Bushing	1	1	
22	XFS-314220	Screw	3	3	

THREAD TAKE-UP LEVER MECHANISM  
天秤機構

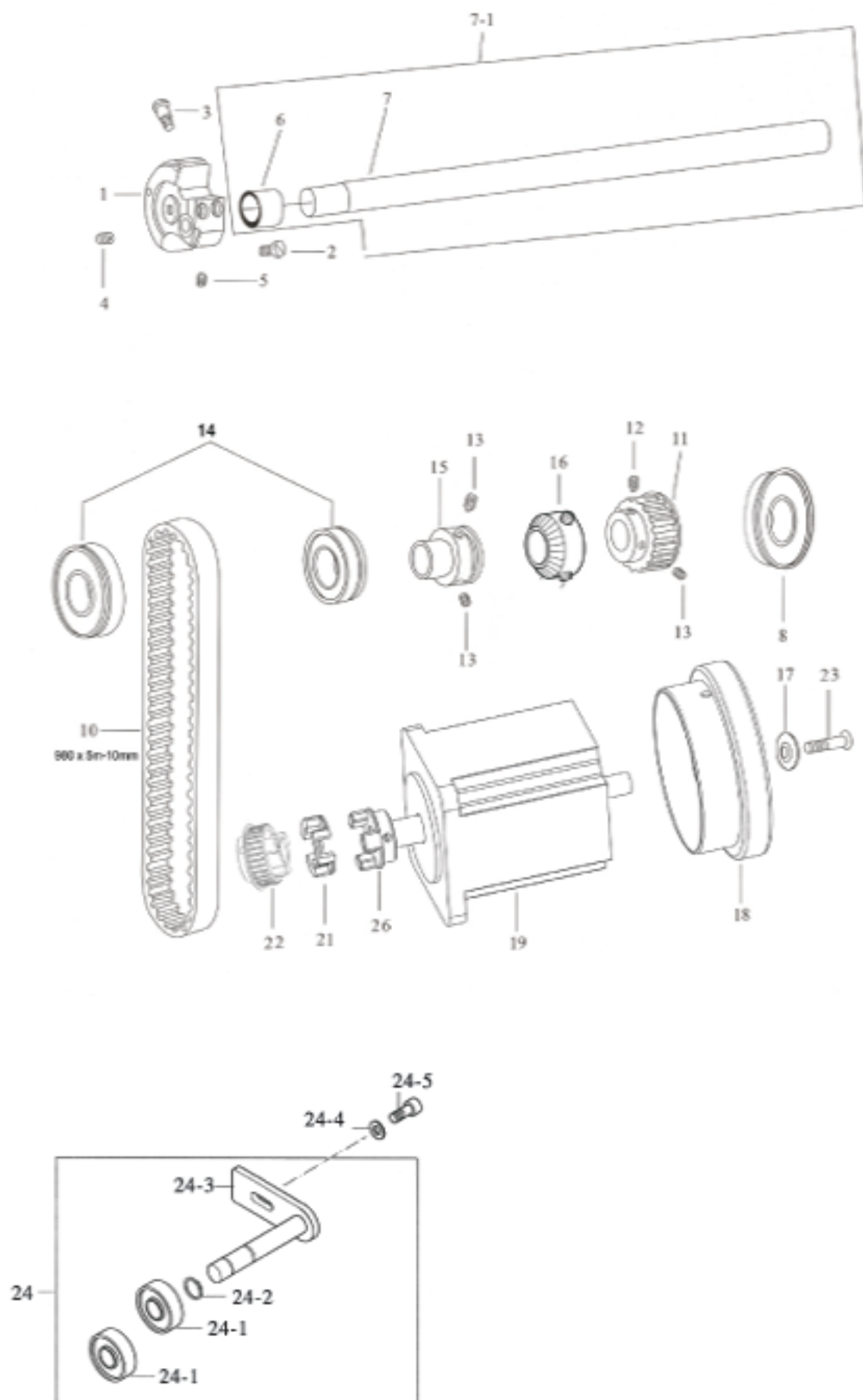


## UPPER SHAFT AND BALANCE WHEEL MECHANISM

## 上軸、皮帶輪機構

Ref.No.	Part No.	Name Of Part	Amt.req.		Remarks
			單	雙	
1	XFS-119702-2	Crank Cam 凸輪	1	1	
2	XFS-130224	Screw 螺絲	2	2	
3	XFS-119702-3	Screw 螺絲	1	1	
4	XFS-119702-4	Screw 螺絲	1	1	
5	XFS-700510	Screw 螺絲	1	1	
6	XFS-119702-5	Bushing 上軸套環	1	1	
7	XFS-119702-1	Upper Shaft 上軸	1	1	
7-1	XFS-106151	Upper Shaft Assy 上軸套環組	1	1	
8	XFS-106151	Bearing 軸承	0	1	
10	XFS-069160	Timing Belt 皮帶	1	1	
10-1	XFS-119707	Timing Belt 皮帶	1	1	
11	XFS-119707	TimingBelt Wheel 齒形皮帶輪	1	1	
12	XFS-335902	Screw 螺絲	2	2	
13	XFS-335902-1	Screw 螺絲	6	6	
14	XFS-016153	Ball Bearing 滾珠培林	2	2	
15	XFS-119705	Upper Shaft Bushing 上軸套管	2	2	
16	XFS-118570	Crank cam 打綫器凸輪	1	1	
17	XFS-168480	Washer 華司	2	2	
18	XFS-170913	Pulley blance wheel 皮帶輪	1	1	
19	XFS-170001	Motor 電機	1	1	
20	XFS-170002	Connecting 聯接座	1	1	
21	XFS-170003	Glue set 膠套	2	2	
22	XFS-262195	Synchronizing Wheel 同步輪	1	1	
23	XFS-210287	Screw 螺絲	1	1	
24	XFS-263248	Belts Adjustable Assembly 皮帶調節組件	1	1	
24-1	XFS-016080	Bearing 軸承	2	2	
24-2	XFS-610230	Retaining ring 卡環	1	1	
24-3	XFS-263120	Bracket 固定架	1	1	
24-4	XFS-305144	Washer 墊片	1	1	
24-5	XFS-130227	Screw 螺絲	1	1	

UPPER SHAFT AND BALANCE WHEEL MECHANISM  
上軸、皮帶輪機構

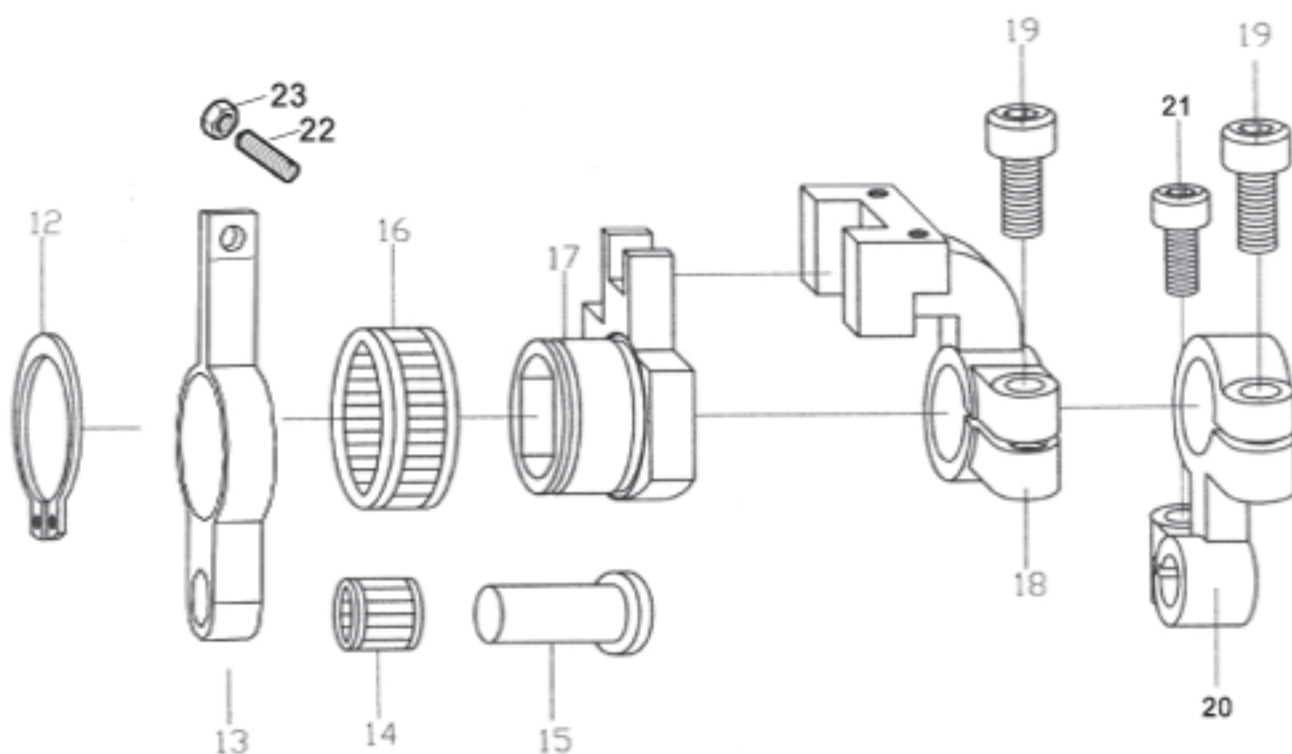
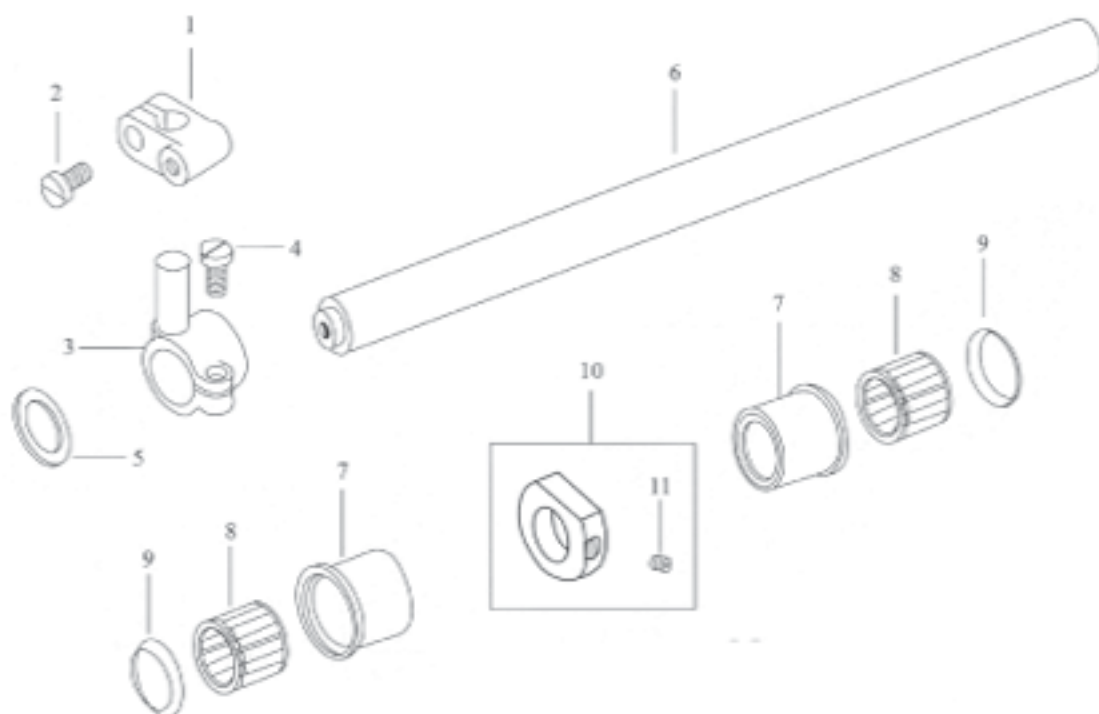




UPPER SIDE SHAFT MECHANISM  
上軸心機構

Ref.No.	Part No.	Name Of Part	Amt.req.		Remarks
			單	雙	
1	XFS-119164	Clamp 萬向連接座	1	1	(11)
2	XFS-108177	Screw 螺絲	1	1	
3	XFS-119163	Crank 萬向連接頭	1	1	
4	XFS-108225	Screw 螺絲	1	1	
5	XFS-119085	Washer 華絲	1	1	
6	XFS-119511	Upper Side Shaft 上邊軸	1	1	
7	XFS-118600	Bushing 針形軸承套管	2	2	
8	XFS-215124	Needle Breaing 針狀培林	2	2	
9	XFS-133283	Washer 華林	1	1	
10	SFX-118504	Collar 定環	1	1	
11	XFS-118503	Screw 螺絲	1	1	
12	XFS-610370	Retaining Ring C型扣環	1	0	
13	XFS-774747	Connecting Rod 擺軸連杆	1	0	
14	XFS-215028	Needle Bearing 針狀培林	1	0	
15	XFS-175150	Pin 固定梢 (短)	1	0	
16	XFS-242810	Needle Bearing 針狀培林	1	0	
17	XFS-1-43	Slider 擺軸滑塊	1	0	
18	XFS-1-40	Slider Bracket 擺軸滑塊座	1	0	
19	XFS-1-40-1	Screw (m3*6) 螺絲	2	1	
20	XFS-1-46	Connecting Rod 送料短連杆	1	1	
21	XFS-1-46-1	Screw (m5*13) 螺絲	1	1	
22	XFS-1-47	Screw 螺絲	1	1	
23	XFS-1-48	Nut 螺母	1	1	

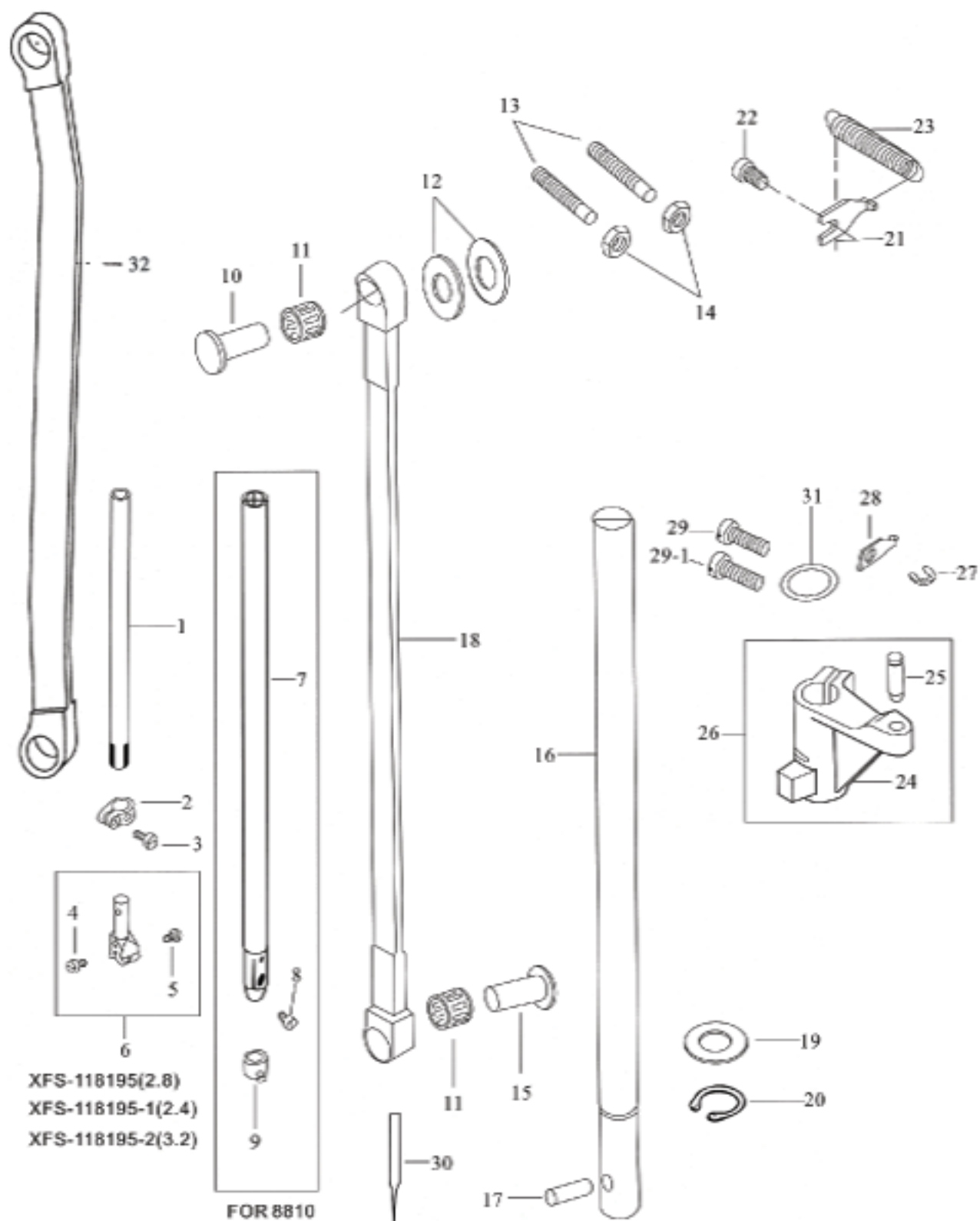
UPPER SIDE SHAFT MECHANISM  
上軸心機構



NEDLE BAR MECHANISM  
針棒機構

Ref.No.	Part No.	Name Of Part	Amt.req.		Remarks
			單	雙	
1	XFS-118197	Needle Bar 雙針針棒	0	1	
2	XFS-118196	Ring Clamp 針棒套環	0	1	
3	XFS-108174-1	Screw 螺絲	0	1	
4	XFS-700868	Screw 螺絲	0	1	
5	XFS-700868-1	Screw 螺絲	0	1	
6	XFS-118195	Needle Holder (2.8) 針樞	0	1	(4, 5)
	XFS-118195-1	NeedleHolder (2.4) 針樞	0	1	(4, 5)
	XFS-118195-2	Needle Holder (3.2) 針樞	0	1	
7	XFS-175096	Needle Bar 單針針棒	1	0	
8	XFS-174173	Screw 螺絲	1	0	
9	XFS-175096	Thread Guide 針棒束環	1	0	
10	XFS-175150	Pin 固定梢 (短)	1	1	
11	XFS-215028	Needle Bearing 針狀培林	2	2	
12	XFS-169137	Washer 華司	2	2	
13	XFS-305305	Screw 螺絲	2	2	
14	XFS-024191	Nut 螺帽	2	2	
15	XFS-118612	Pin 固定梢 (長)	1	1	
16	XFS-119718	Shaft 腳押長軸	1	1	
17	XFS-030310	Pin 平行梢	1	1	
18	XFS-119046	Connecting Rod 連杆	0	1	
19	XFS-119525-2	Washer 華司	1	1	
20	XFS-119718-2	Retaining Ring C 型扣環	1	1	
21	XFS-115585	Spring Plate 彈簧固定板	1	1	
22	XFS-108285	Screw 螺絲	1	1	
23	XFS-118857	Spring 彈簧	1	1	
24	XFS-118543	Crank 上下輸送臂	1	1	
25	XFS-118544	Pin 彈簧固定梢	1	1	(24,25)
26	XFS-118543A	Crank Shaft 腳押連杆上下臂	1	1	
27	XFS-640150	E-Ring E型扣環	1	1	
28	XFS-020490	Spring Plate 彈簧勾板	1	1	
29	XFS-130224	Screw 螺絲	2	2	
29-1	XFS-130224-1	Screw 螺絲	1	1	
30	XFS-134356	Needle 針	1	1	
31	XFS-118545	Washer 華司	1	1	
32	XFS-2-28	Connecting Rod 連杆	1	0	

NEEDLE BAR MECHNISM  
針棒機構

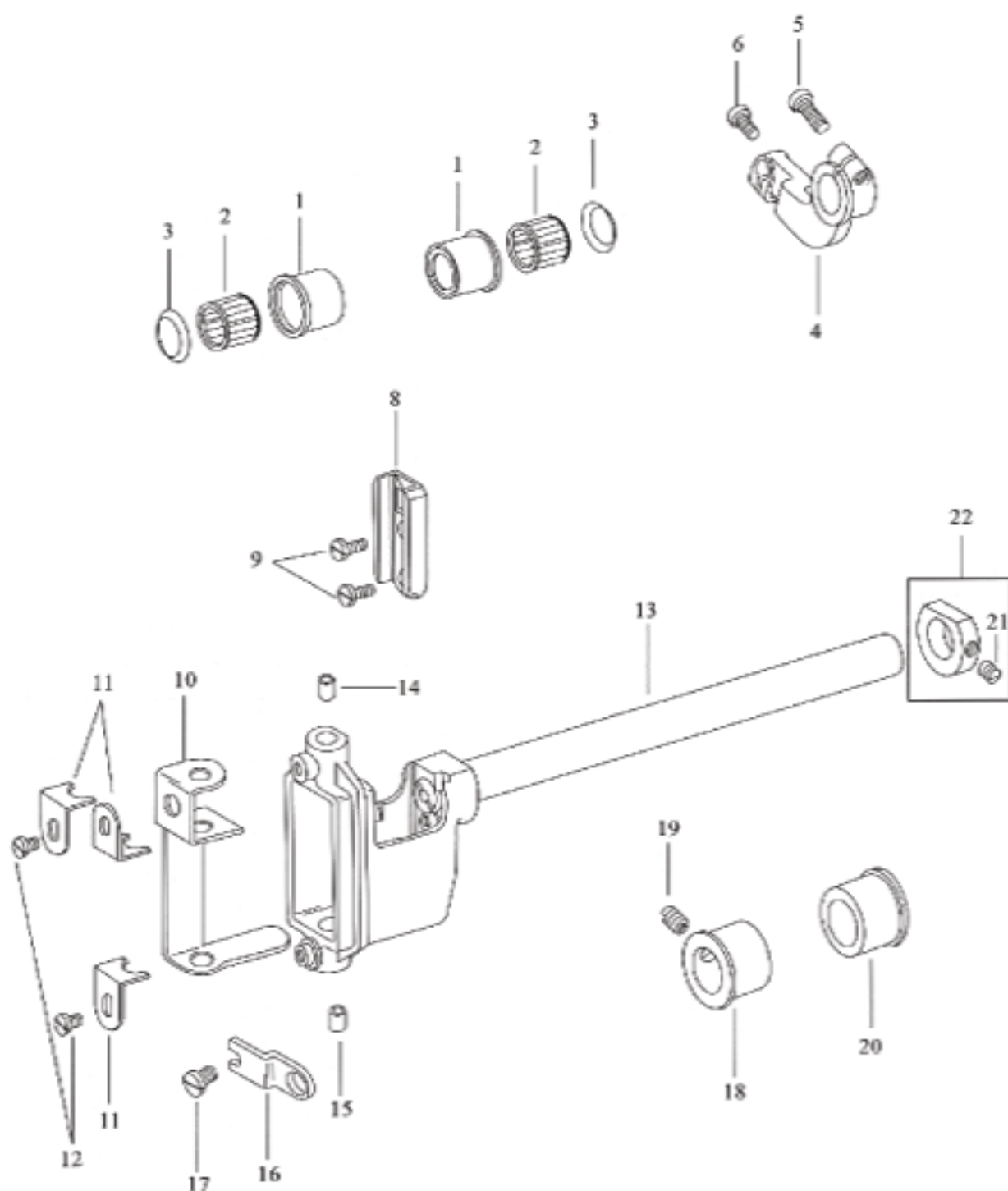


NEEDE BAR FEED MECHANISM  
針棒進給機構

Rcf.No.	Part No.	Name Of Part	Amt.req.		Remarks
			單	雙	
1	XFS-118600	Bushing 套管	2	0	
2	XFS-215124	Needle Bearng 針狀培林	2	0	
3	XFS-133283	Washer 華司	4	0	
4	XFS-118610	Crank 針送支臂	0	0	
5	XFS-108285-1	Screw 螺絲	1	0	
6	XFS-130224	Screw 螺絲	1	0	
8	XFS-118594	Needle Bar Connecting Link Guide 針棒連接器道槽	1	1	
9	XFS-100355	Screw 螺絲	2	2	
10	XFS-119014	Oil Feft 油棉	1	1	
11	XFS-119015	Holder 油棉墊板	3	3	
12	XFS-706169	Screw 螺絲你	2	2	
13	XFS-119940	Needle Bar Holder 針棒支持座	1	1	
14	XFS-119940-5	Needle Bar Bushing 針棒套管 (上)	1	1	
15	XFS-119940-4	Needle Bar Bushing 針棒套管 (下)	1	1	
16	XFS-118521	Needle Bar Support Frame Retainer 針棒固定板	0	1	
17	XFS-108219	Screw 螺絲	0	1	
18	XFS-118600	Bushing 套管	0	1	
19	XFS-314286	Screw 螺絲	0	1	
20	XFS-118600	Bushing 套管	0	1	
21	XFS-118503	Screw 螺絲	1	1	
22	XFS-118504	Collar 定環	1	1	(21)
23	XFS-1-50	Crank 針送支臂	1	0	



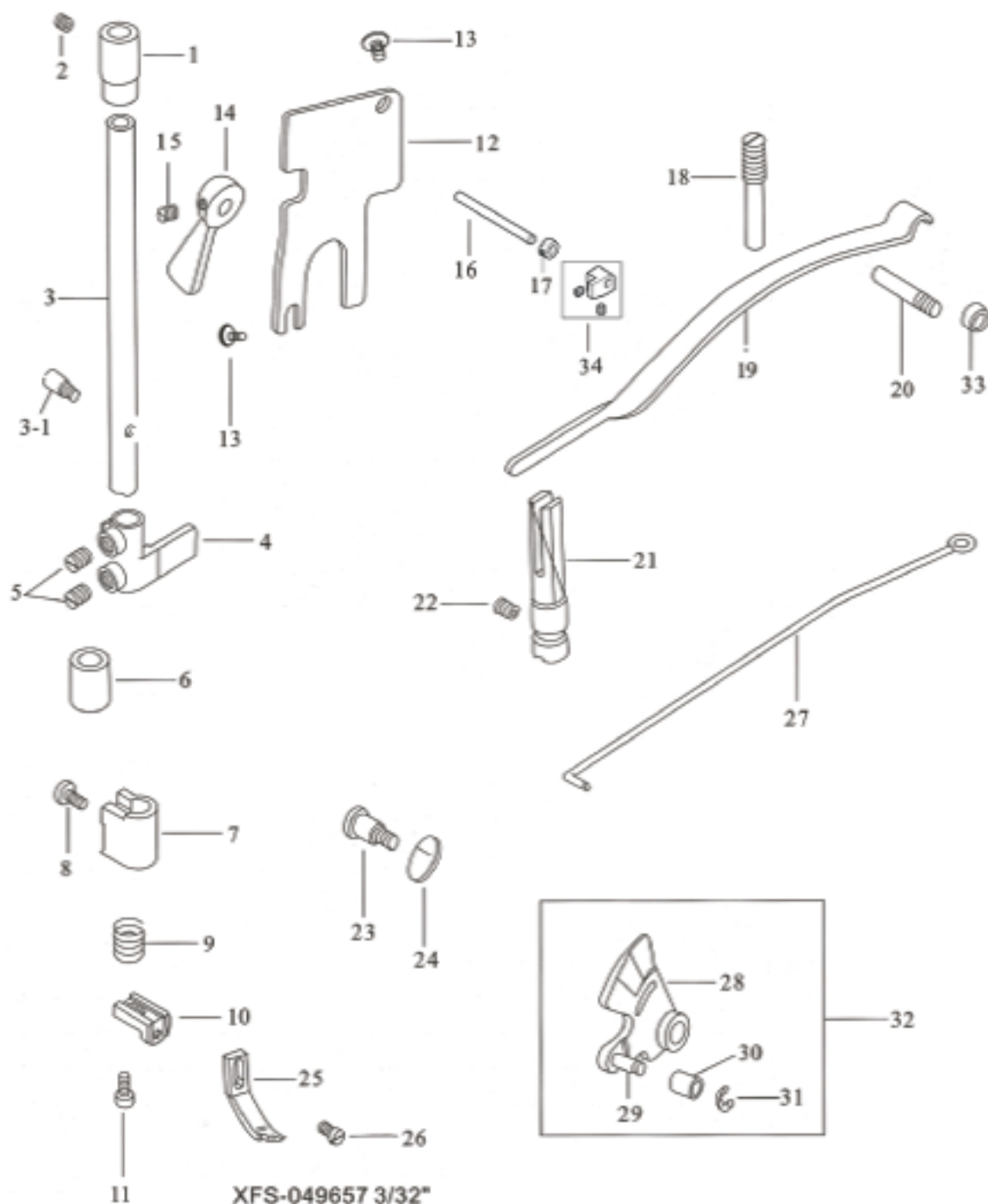
NEEDE BAR FEED MECHANISM  
針棒進給機構



PRESSER FOOT BAR MECHANISM  
 押棒機構

Ref.No.	Part No.	Name Of Part	Amt.req.		Remarks
			單	雙	
1	XFS-119019	Presser Bar Bushing (Upper)	壓棒套管 (上)	1	1
2	XFS-700785	Screw	螺絲	1	1
3	XFS-119018	Presser Bar	押棒	1	1
3-1	XFS-119018-1	Pin	梢子	1	1
4	XFS-118530	Presser Bar Holder	墊棒固定座	1	1
5	XFS-700510	Screw	螺絲	2	2
6	XFS-119019-1	Presser Bar Bushing (Lower)	押棒套管 (下)	1	1
7	XFS-119165	Roller Presser Holder	輪綫下座	1	1
8	XFS-173174	Screw	螺絲	1	1
9	XFS-025874	Spring	彈簧	1	1
10	XFS-054876	Angle	頂針座	1	1
11	XFS-130173	Screw	螺絲	1	1
12	XFS-175135	Cover	小防砂板	1	1
13	XFS-700335	Screw	螺絲	2	2
14	XFS-069079	Presser Foot Lifter	押棒提杆	1	1
15	XFS-317950	Screw	螺絲	1	1
16	XFS-033424	Pin	提手銷子	1	1
17	XFS-710190	Collar	提手定環	1	1
18	XFS-100331	Screw	螺絲	1	1
19	XFS-118535	Presser Plate Spring	彈片壓板	1	1
20	XFS-343901	Screw	螺絲	1	1
21	XFS-118105	Stud	軌道棒	1	1
22	XFS-314216	Screw	螺絲	1	1
23	XFS-700017	Screw	螺絲	1	1
24	XFS-119016	Spring	彈簧	1	1
25	XFS-049657	Presser Foot	押腳	0	1
	XFS-049657-1	Presser Foot	押腳	0	1
26	XFS-108171	Screw	螺絲	0	1
27	XFS-118542	Knee Lifter Connecting Lever	腳弓連接杠杆	1	1
28	XFS-118536	Spring Plate	押上板	1	1
29	XFS-118536-1	Pin	梢子	1	1
30	XFS-118539	Bushing	套管	1	1
31	XFS-640150	E-ring	E型扣環	1	1
32	XFS-118536A	Lifting Lever Assy	押上板組	1	1 (30-33)
33	XFS-343902	Bushing	套環	1	1
34	XFS-263198	Plate	提手座	1	1

PRESSER FOOT BAR MECHANISM  
 押棒機構

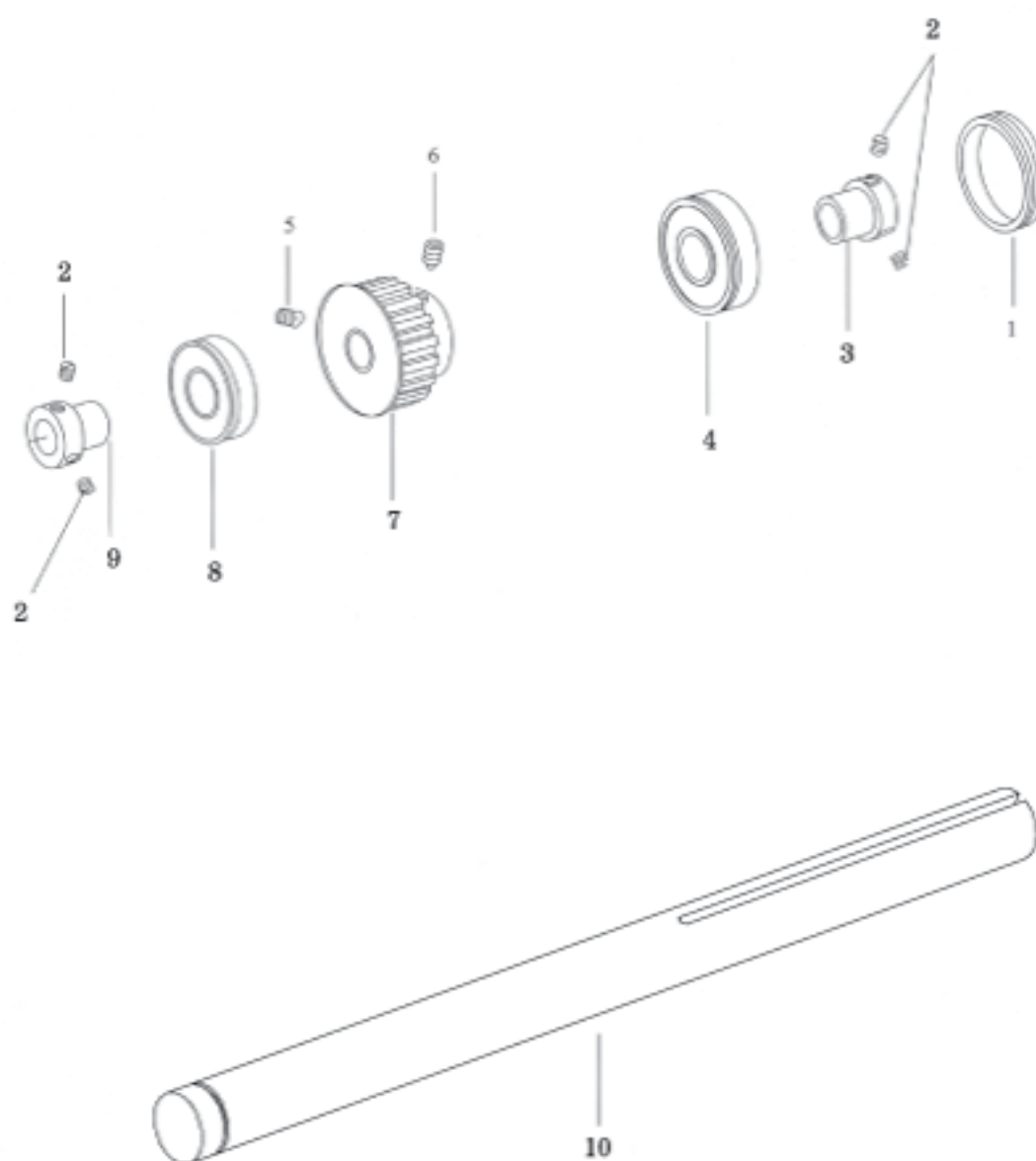


XFS-049657 3/32"  
 XFS-049657-1 1/16"

**TIMING BELT DRIVING MECHANISM**  
**皮帶傳動機構**

Ref.No.	Part No.	Name Of Part	Amt.req.		Remarks
			單	雙	
1	XFS-119097	Plug 保護蓋	2	2	
2	XFS-700689	Screw 螺絲	4	4	
3	XFS-118726	Collar (Right) 軸承套管 (右)	1	1	
4	XFS-018624	Ball Bearing 滾珠軸	2	2	
5	XFS-335902-1	Screw 螺絲	2	2	
6	XFS-335902	Screw 螺絲	2	2	
7	XFS-119708	Timing Belt Wheel 齒輪皮帶輪	1	1	
8	XFS-018613	Ball Bearing 滾珠軸承	1	1	
9	XFS-119121	Collar (Left) 軸承套管 (左)	1	1	
10	XFS-119706	Shaft 皮帶輪軸	1	1	

TIMING BELT DRIVING MECHANISM  
皮帶傳動機構

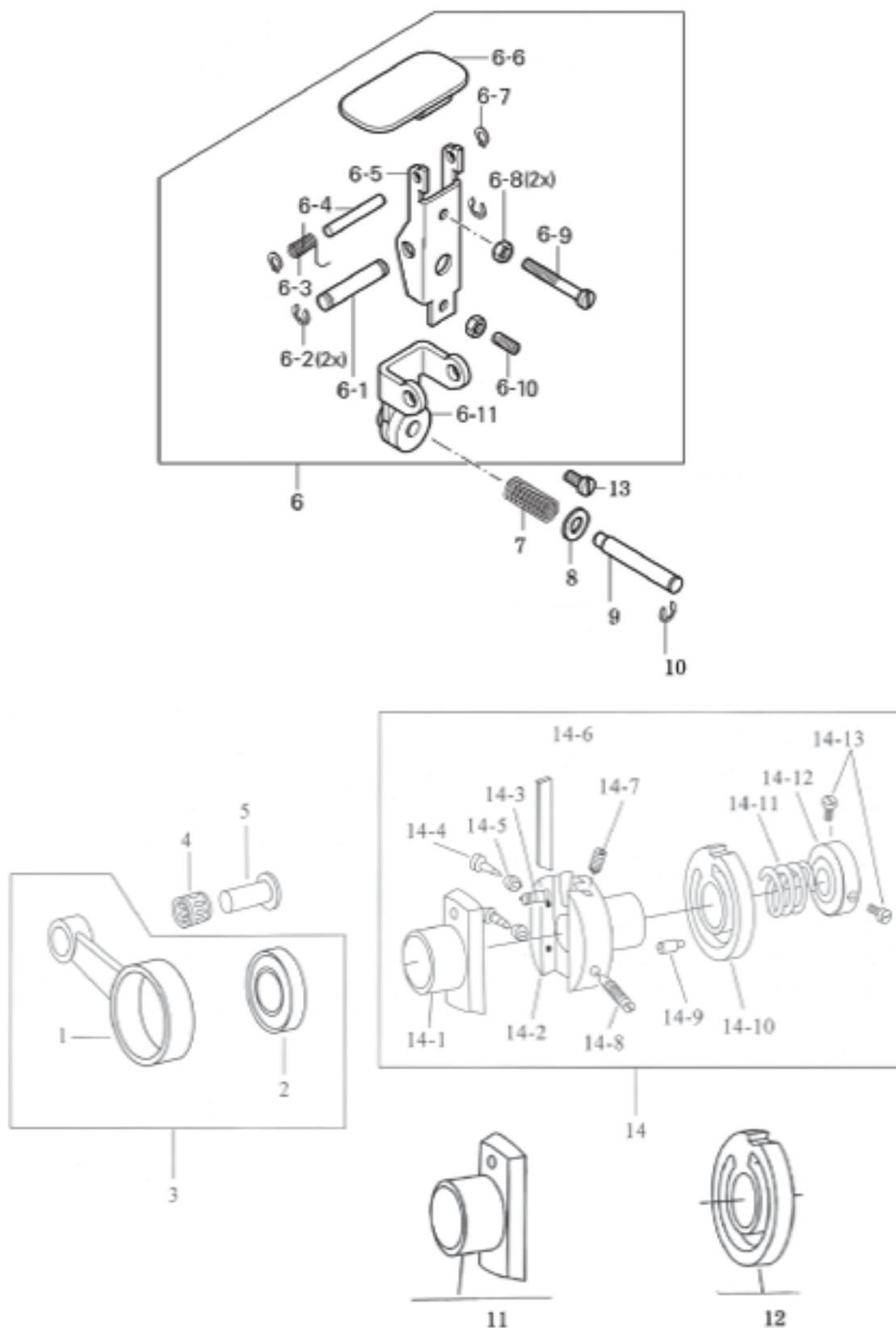




STITCH ADJUSTER MECHANISM  
縫目調整機構

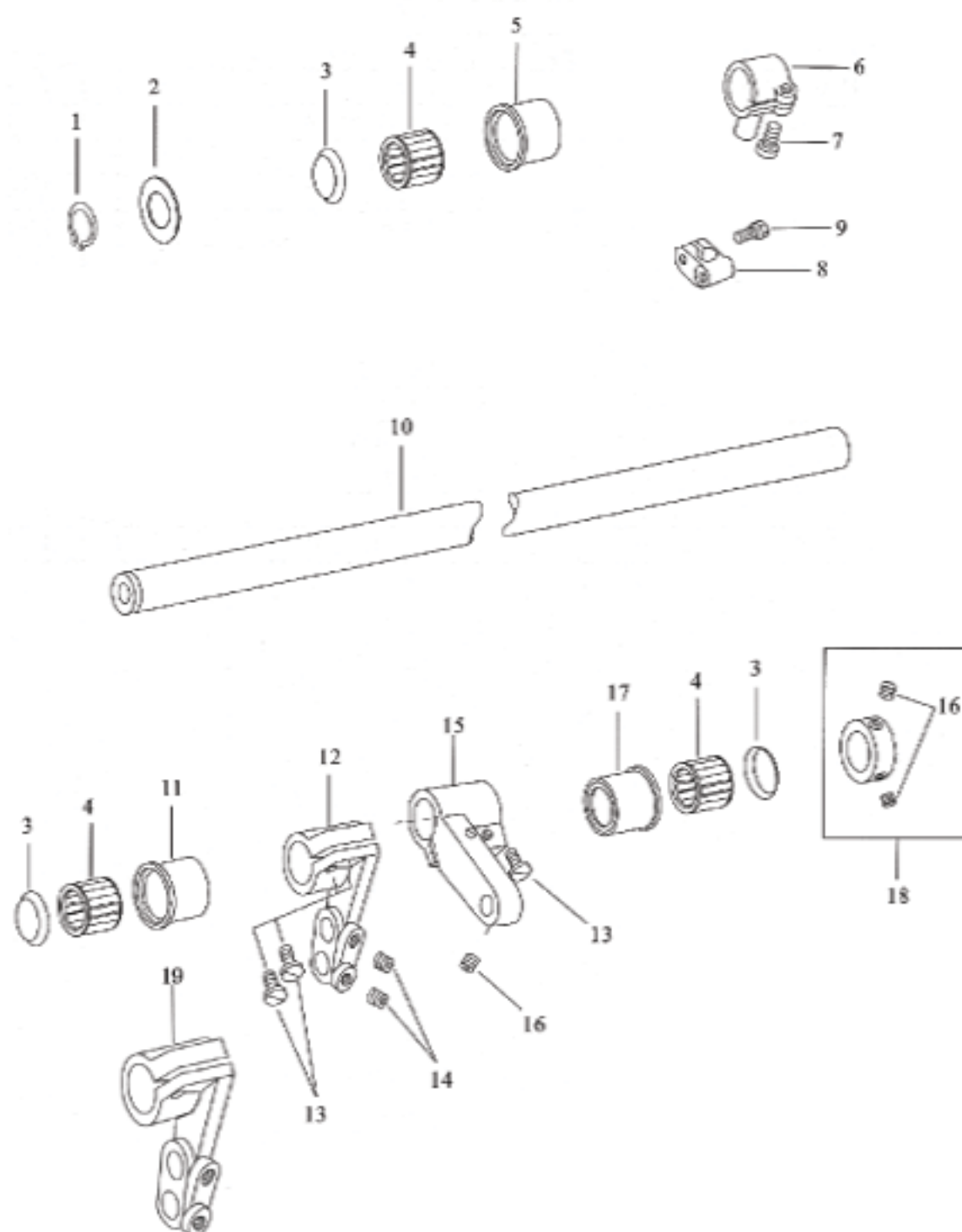
Ref.No.	Part No.	Name Of Part	Amt.req.		Remarks
			單	雙	
1	XFS-175038	Connecting Rod 連杆	1	1	
2	XFS-6906	Ball Bearing 滾珠軸承	1	1	
3	XFS-175038A	Crank Rod Set 毛毛連杆組	1	1	(1,2)
4	XFS-215028	Needle Bearing 針狀軸承	1	1	
5	XFS-118612	Bearing Stud 固定銷 (長)	1	1	
6	XFS-263004	Feeding Adjusting plate 調整器	1	1	
7	XFS-173505	Screw 彈簧	1	1	
8	XFS-305174	Nut 墊片	1	1	
9	XFS-774812	Spring 梢子	1	1	
10	XFS-640150	E-ning E型扣環	1	1	
11	XFS-640151	Pin 縫目調整座	1	1	
12	XFS-640152	Pin 縫目調整座	1	1	
13	XFS-108174	Screw 螺絲	1	1	
14	XFS-175029	Cam Assy 凸輪組	1	1	
14-1	XFS-175029-1	Stitch Regulating Seat 縫目調整座	1	1	
14-2	XFS-175029-2	Stitch Regulating Fix Seat 縫目調整固定座	1	1	
14-3	XFS-175029-3	Feed Adjusting Fix Screw 偏心調整支軸	1	1	
14-4	XFS-175029-4	Screw 螺絲	1	1	
14-5	XFS-175029-5	Nut 螺帽	1	1	
14-6	XFS-175029-6	Friction Plate 迫緊片	1	1	
14-7	XFS-175029-7	Screw 螺絲	1	1	
14-8	XFS-175029-8	Screw 螺絲	1	1	
14-9	XFS-175029-9	Screw 螺絲	1	1	
14-10	XFS-175029-10	Eccentric Wheel 縫目調整偏心輪	1	1	
14-11	XFS-175029-11	Spring 彈簧	1	1	
14-12	XFS-175029-12	Collar 套環	1	1	
14-13	XFS-175029-13	Screw 螺絲	2	2	

STITCH ADJUSTER MECHANISM  
縫目調整機構



FEED SHAFT MECHANISM  
輸送傳動機構

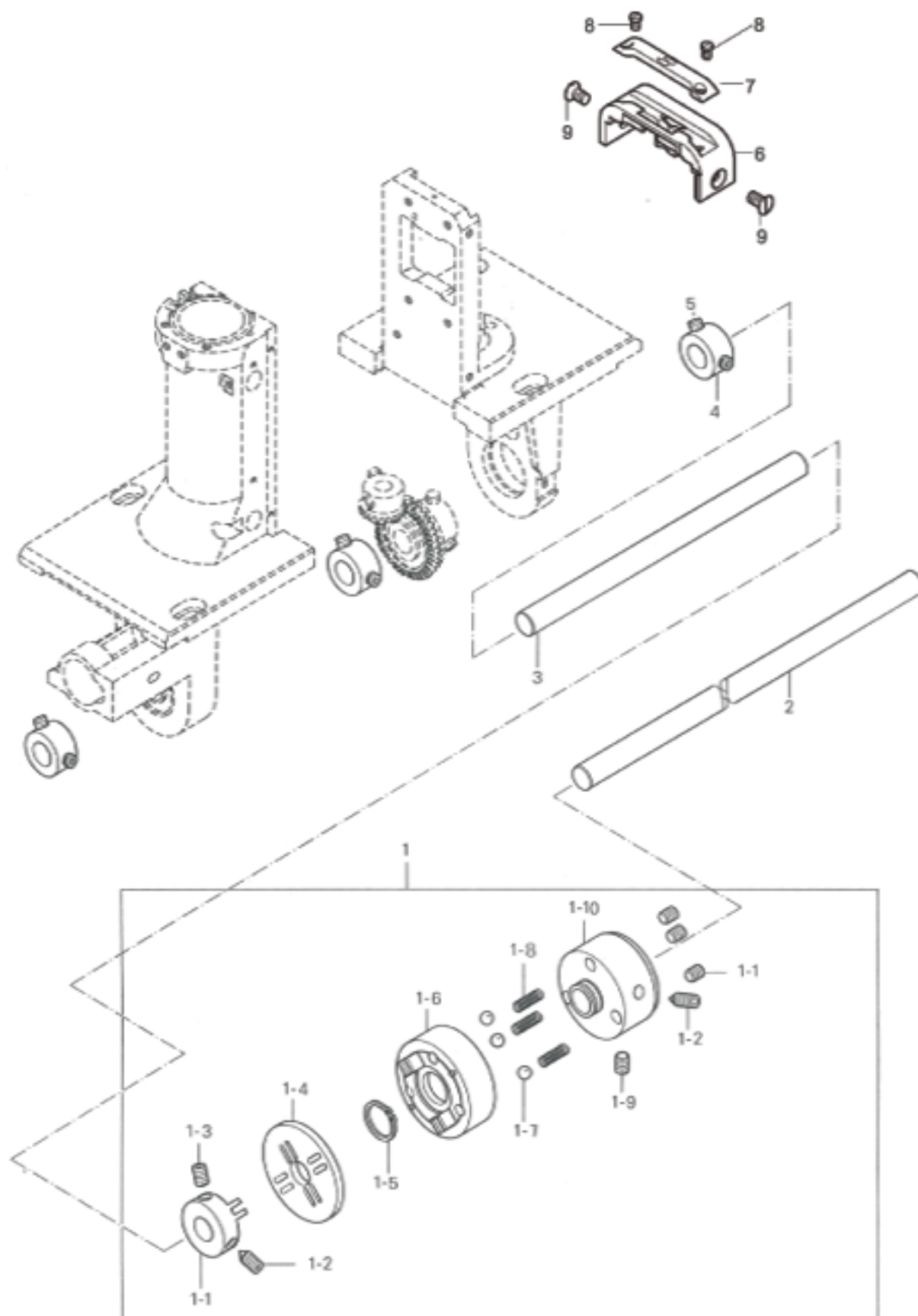
Ref.No.	Part No.	Name Of Part	Amt.req.		Remarks
			單	雙	
1	XFS-610280	Retaining Ring	C型扣環	1	1
2	XFS-119085	Washer	華司	1	1
3	XFS-133283	Washer	針狀軸承蓋	6	6
4	XFS-215124	Needle Bearing	針狀軸承	3	3
5	XFS-118600	Bushing	套管	1	1
6	XFS-119163	Crank	萬向連接頭	1	1
7	XFS-108225	Screw	螺絲	1	1
8	XFS-119164	Clamp	萬向連接座	1	1
9	XFS-108177	Screw	螺絲	1	1
10	XFS-119084	Shaft	輸送主軸	1	1
11	XFS-11860	Bushing	套管	1	1
12	XFS-119521	Crank	單向輸送支臂	0	1
13	XFS-130224	Screw	螺絲	3	3
14	XFS-335902-1	Screw	螺絲	2	2
15	XFS-119521-1	Crank	單向輸送支臂	1	1
16	XFS-700689	Screw	螺絲	3	3
17	XFS-11860	Bushing	套管	1	1
18	XFS-119893	Collar	上邊心定環	1	1
19	XFS-2-29	Crank	單向輸送支臂	1	0



CLUTCH SET MECHANISM  
離合器機構

Ref.No.	Part No.	Name Of Part	Amt.req.		Remarks
			單	雙	
1	XFS-166551	Saferg Clutch	離合器組件	1	1
1-1	XFS-166555	Coupler (left)	軸連器 (左)	1	1
1-2	XFS-335902	Screw	螺絲	2	2
1-3	XFS-341902	Screw	螺絲	1	1
1-4	XFS-166554	Connecting Plate	連接板	1	1
1-5	XFS-610290	Retaining Ring	型卡環	1	1
1-6	XFS-166552	Coupler (right)	軸連器 (右)	1	1
1-7	XFS-560251-05	Ball Bearing	鋼珠	3	3
1-8	XFS-162526-05	Spring	彈簧	3	3
1-9	XFS-330960	Screw	螺絲	1	1
1-10	XFS-166553	Safety Clutch Seat	離合器座	1	1
1-11	XFS-341905	Screw	螺絲	3	3
2	XFS-774810	Shaft	離合器軸	1	1
3	XFS-774811	Shaft	齒輪軸	1	1
4	XFS-171175	Ciler	定環	3	3
5	XFS-330952	Screw	螺絲	6	6
6	XFS-150915	Beard needle plate	雙針針板		1
7	XFS-150625	Double beard needle plate	雙針針板片		1
8	XFS-165344	Screw	螺絲		2
9	XFS-100296	Screw	螺絲		2

CLUTCH SET MECHANISM  
離合器機構

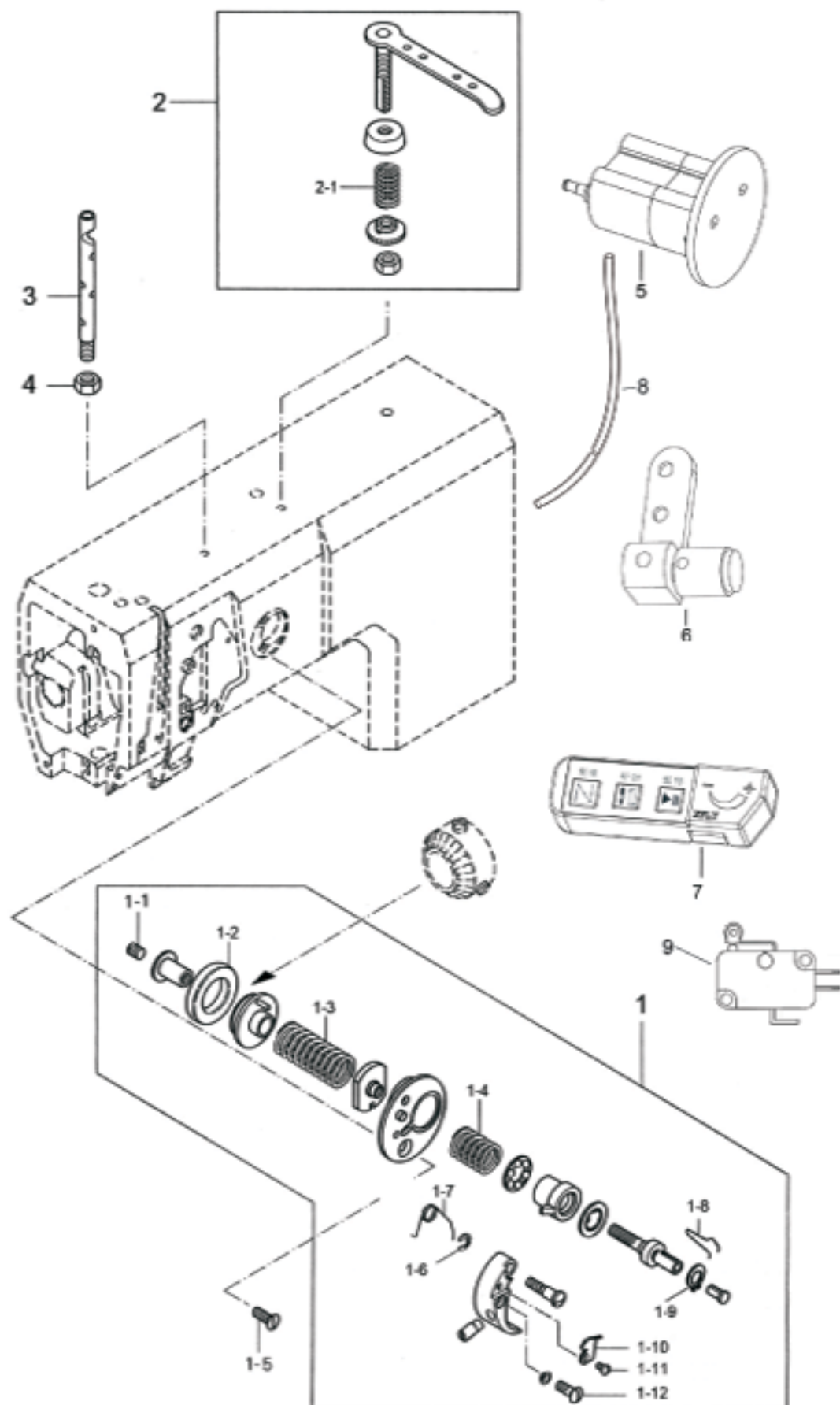




ARM PARTS PIEZAS DE LA BRAZO  
機臂零件

Ref.No.	Part No.	Name Of Part	Amt.req.		Remarks
			單	雙	
1	XFS-774466	Line device 打綫器	1	1	
1-1	XFS-330952	Screw 螺絲	1	1	
1-2	XFS-137151	Shirnk-ring 套環	1	1	
1-3	XFS-264358	Spring 彈簧	1	1	
1-4	XFS-264357	Spring 彈簧	1	1	
1-5	XFS-210168	Screw 螺絲	1	1	
1-6	XFS-640130	E-Ring E型扣環	1	1	
1-7	XFS-118683	Spring 彈簧	1	1	
1-8	XFS-171049	Spring 彈簧	1	1	
1-9	XFS-618190	Retaining ring C型卡環	1	1	
1-10	XFS-774464	Spring 彈片	1	1	
1-11	XFS-700996	Screw 螺絲	1	1	
1-12	XFS-250084	Screw 螺絲	1	1	
2	XFS-056578	4Hole Thread Retiner 四孔綫挂	1	1	
2-1	XFS-174879	Spring 彈簧	1	1	
3	XFS-119026	Spool 綫柱	1	1	
4	XFS-1024191	Mot 螺帽	1	1	
5	XFS-150724	Oil Can 油壺	1	1	
6	XFS-150725	Wire Clip 夾綫器	1	1	
7	XFS-150726	Switch Box 開關盒	1	1	
8	XFS-161 801	The tubing 油管	1	1	
9	XFS-150726-2	Micro switch 微動開關	1	1	

ARM PARTS PIEZAS DE LA BRAZO  
機臂零件

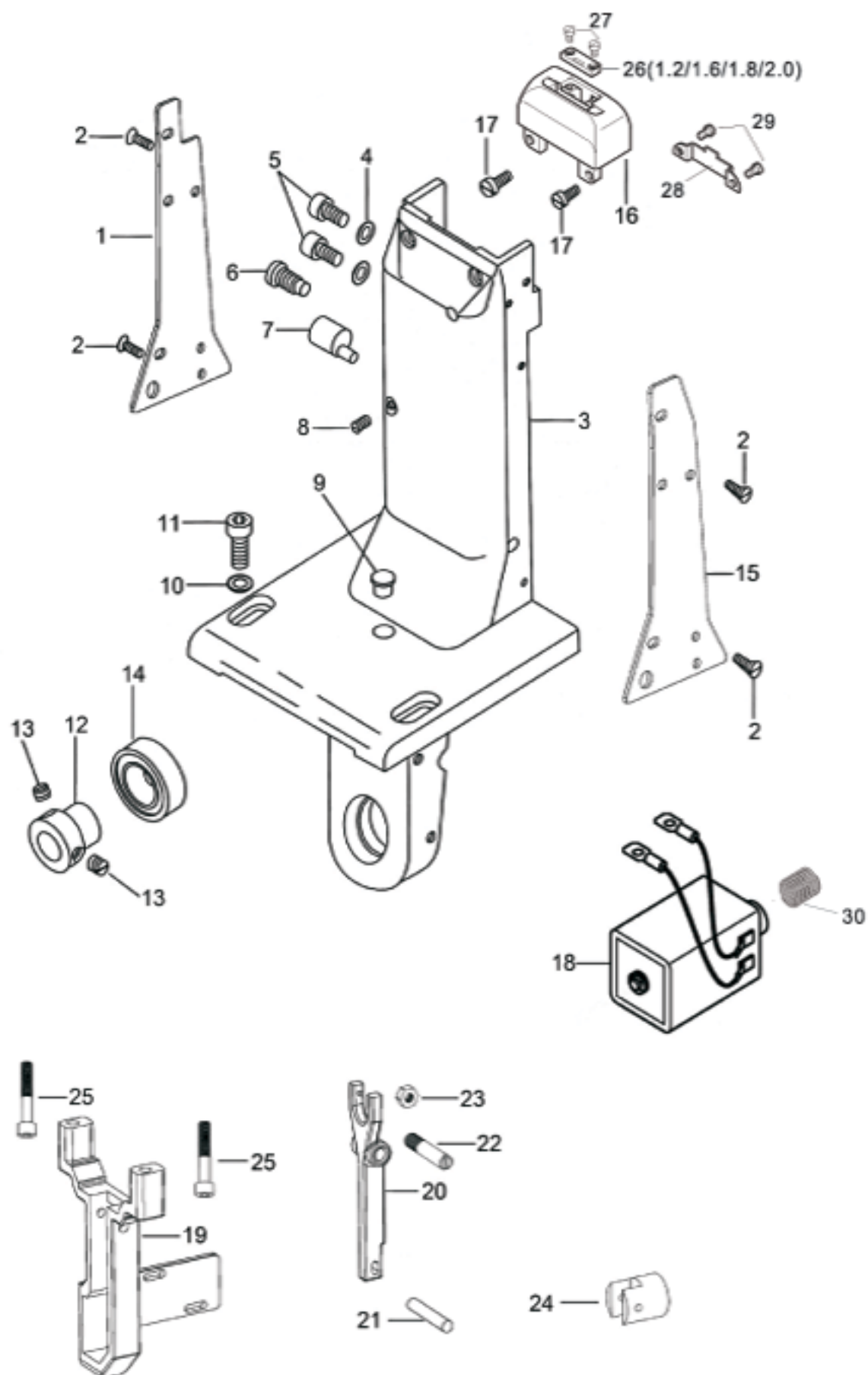


## BEDPLATE FEED MECHANISM

## 單針中座機構

Ref.No.	Part No.	Name Of Part	Amt.req.		Remarks
			單	雙	
1	XFS-119145	Cover Plate 防蓋板	1	0	
2	XFS-250084	Screw 螺絲	10	0	
3	XFS-119721	Support Plate 單針中座	1	0	
4	XFS-119144	Washer 華司	2	0	
5	XFS-130224	Screw 螺絲	2	0	
6.	XFS-182451	Screw 螺絲	1	0	
7	XFS-119725	Stud 調整梢	1	0	
8	XFS-317170	Screw 螺絲	1	0	
9	XFS-168351	Plug 油蓋	1	0	
10	XFS-305174	Washer 華司	4	0	
11	XFS-135292	Screw 螺絲	4	0	
12	XFS-119121	Collar 主軸套管	1	0	
13	XFS-700689	Screw 螺絲	2	0	
14	XFS-016120	Ball Bearing 滾珠軸承	1	0	
15	XFS-305144	Cover Plate 防蓋板	1	0	
16	XFS-150878	Needle Plate (2.0) 單針針板	1	0	
	XFS-150878-1	Needle Plate (1.6) 單針針板	1	0	
17	XFS-210168	Screw 螺絲	2	0	
18	XFS-170002	Electromagnet 電磁鐵	1	1	
19	XFS-140502	Bracket 倒縫支架	1	0	
20	XFS-140503	leverage 杠杆	1	0	
21	XFS-140504	pin 銷子	1	0	
22	XFS-130206	Screw 螺絲	1	0	
23	XFS-024151	Nut 螺帽	1	0	
24	XFS-140505	The Connector 連接器	1	0	
25	XFS-130173	Screw 螺絲	2	0	
26	XFS-150868	The needle plate 針板片	1	0	
27	XFS-108006	Screw 螺絲	2	0	
28	XFS-150861	The needle plate block slice 針板擋片	1	0	
29	XFS-172085	Screw 螺絲	2	0	
30	XFS-137614	Spring 彈簧	1	0	

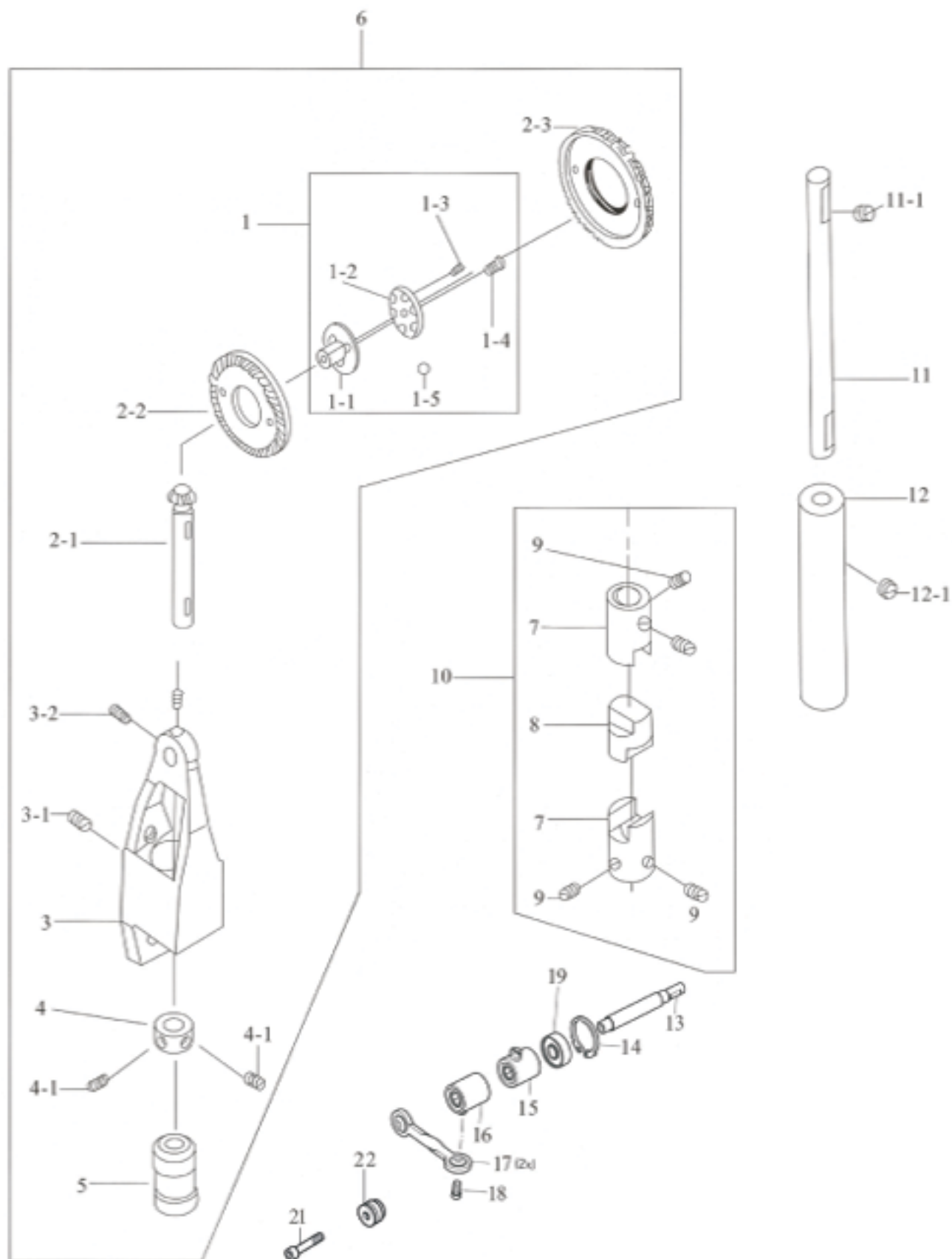
BEDPLATE FEED MECHANISM  
單針中座機構



BEDPLATE GEAR FEED MECHANISM  
中座齒輪傳動機構

Ref.No.	Part No.	Name Of Part	Amt.req.		Remarks
			單	雙	
1	XFS-119795	Roller Bracket 送料齒輪軸	1	0	
1-1	XFS-119795-1	Roller Bracket (Upper) 送料齒輪軸 (上)	1	0	
1-2	XFS-119795-2	Roller Bracket (lower) 送料齒輪軸 (下)	1	0	
1-3	XFS-119795-3	Screw 螺絲	1	0	
1-4	XFS-119795-4	Screw 螺絲	1	0	
1-5	XFS-119795-5	Ball 鋼珠	24	0	
2	XFS-119737	Bevel Bracket 上下齒輪軸	1	0	
2-1	XFS-119737-1	Roller Bracket 送料齒輪軸	1	1	
2-2	XFS-119737-2	Roller Bracket 送料大齒輪	1	1	
2-3	XFS-119737-3	Feed Wheel 送料輪	1	0	
3	XFS-119723	Bracket 過綫齒輪座	1	0	
3-1	XFS-119723-1	Screw 螺絲	1	0	
3-2	XFS-119723-2	Screw 螺絲	2	0	
4	XFS-119670	Coller 定環	1	0	
4-1	XFS-119670-1	Screw 螺絲	2	0	(1-5)
5	XFS-119724	Bushing 送料齒輪套環	1	0	
6	XFS-119723A	Bevel Gear Assy 送料齒輪組	1	0	
7	XFS-119535	Bushing 軸連接器	1	0	
8	XFS-119534	Clutch 型膠接頭	1	0	
9	XFS-119535-1	Screw 螺絲	4	0	(7-9)
10	XFS-119535A	Connecting Rod joint Group 連杆接頭組	1	0	
11	XFS-119532	Shaft 中坐軸	1	0	
11-1	XFS-119535-1	Screw 螺絲	2	0	
12	XFS-119533	Bushing 套管	1	0	
13	XFS-119111	Shaft 培林軸	1	1	
14	XFS-664350	Retaining Ring C型扣環	1	1	
15	XFS-119115-1	Free-wheeling sent 單向培林座	2	2	
16	XFS-119164	Direction bridge connecting rod 萬向連杆座	2	2	
17	XFS-119507	Link 萬向連杆座	2	2	
18	XFS-174176	Screw 螺絲	2	2	
19	XFS-012555	Ball Bearing 滾珠軸承	2	2	
20	XFS-774754	Bushing 軸套	1	0	
21	XFS-130191	Screw 螺絲	1	0	

BEDPLATE GEAR FEED MECHANISM  
中座齒輪傳動機構

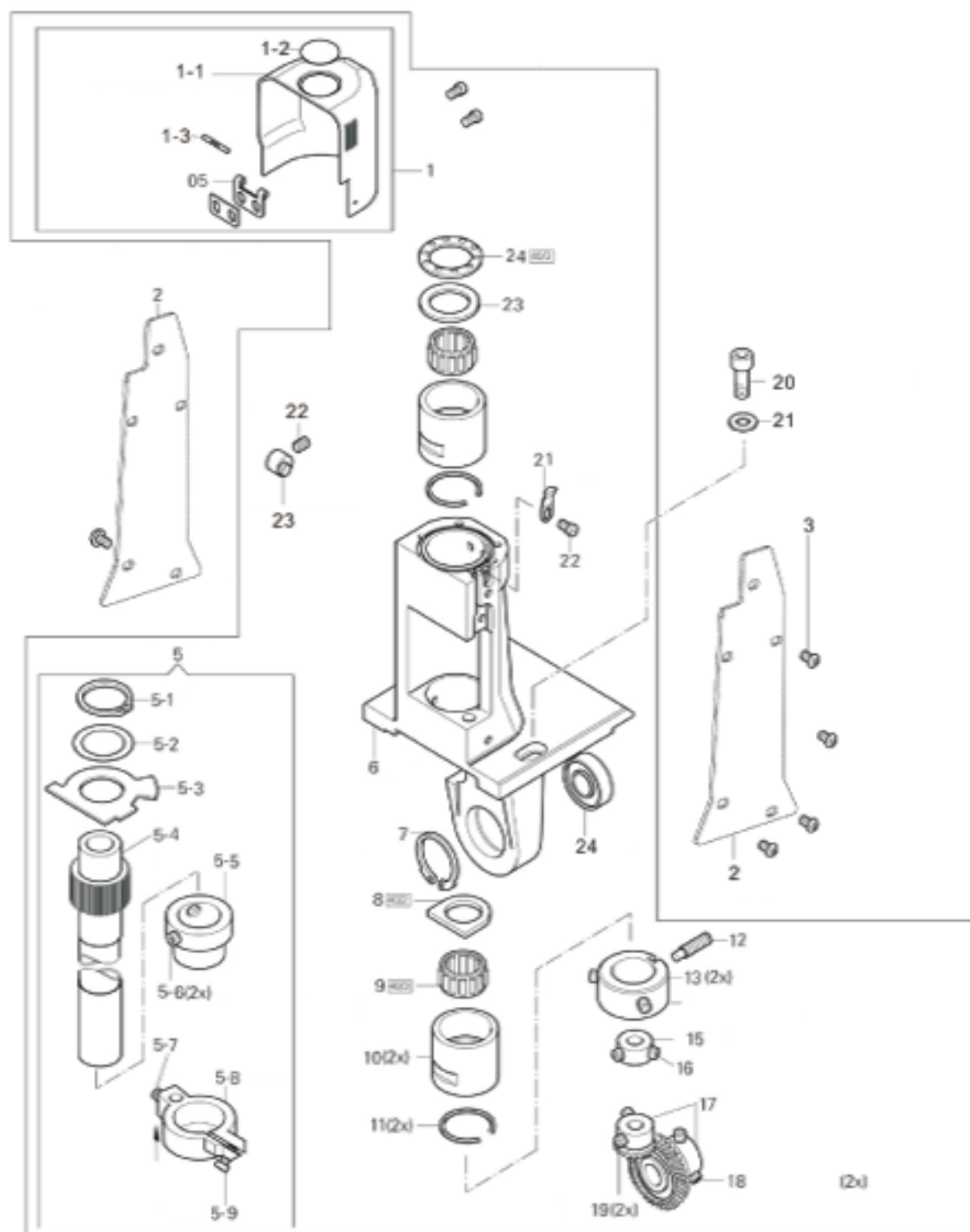




LEFTAND MIDDLE FEED MECHNISM  
左邊座和中座傳動機構

Ref.No.	Part No.	Name Of Part	Amt.req.		Remarks
			單	雙	
1	XFS-774898	Big axe cover Arry	大釜蓋組件	1	2
1-1	XFS-774868	Big axe cover	大釜蓋	1	2
1-2	XFS-774781	Transparent piece of	透明片	1	2
1-3	XFS-070103	Pins	銷子	1	2
2	XFS-164128	Side cover plate	邊蓋板	0	2
3	XFS-180169	Screw	螺絲	0	2
4	XFS-263284	Shrapnel	彈片	1	2
5	XFS-263330	Axe collar tube Arry	釜軸套管組件	1	2
5-1	XFS-610340	Inside card	內卡	1	2
5-2	XFS-360181	Gaskets	墊片	1	2
5-3	XFS-263390	Pads	膠墊	1	1
5-4	XFS-263147	Axe collar tube	釜軸套管	1	1
5-5	XFS-263332	Casing	套管	2	4
5-6	XFS-330964	Screw	螺絲	1	2
5-7	XFS-330952	Screw	螺絲	1	1
5-8	XFS-263333	Supporting	剪綫支臂	1	1
5-9	XFS-130176	Screw	螺絲	1	1
6	XFS-263167	Right a	右邊座	1	1
7	XFS-664410	Inside card	內卡	1	2
8	XFS-119103	Oil Gao	油棒	2	4
9	XFS-215202	With needle bearings	針裝軸承	2	4
10	XFS-175310	Casing	套管	2	4
11	XFS-517370	Inside card	內卡	3	4
12	XFS-119950	Screw	螺絲	1	2
13	XFS-119107	Casing	套管	1	2
14	XFS-165417	Bearing	軸承	1	2
15	XFS-175328	Set ring	定環	1	2
16	XFS-700333	Screw	螺絲	1	2
17	XFS-119133	Gear set	齒輪套	1	2
18	XFS-341905	Screw	螺絲	2	2
19	XFS-341901	Screw	螺絲	2	2
20	XFS-130293	Screw	螺絲	2	2
21	XFS-315170	Gaskets	墊片	1	1
22	XFS-330169	Screw	螺絲	1	1
23	XFS-175318	Cam	偏心凸輪	2	2
24	XFS-016100	Bearing	軸承	1	1

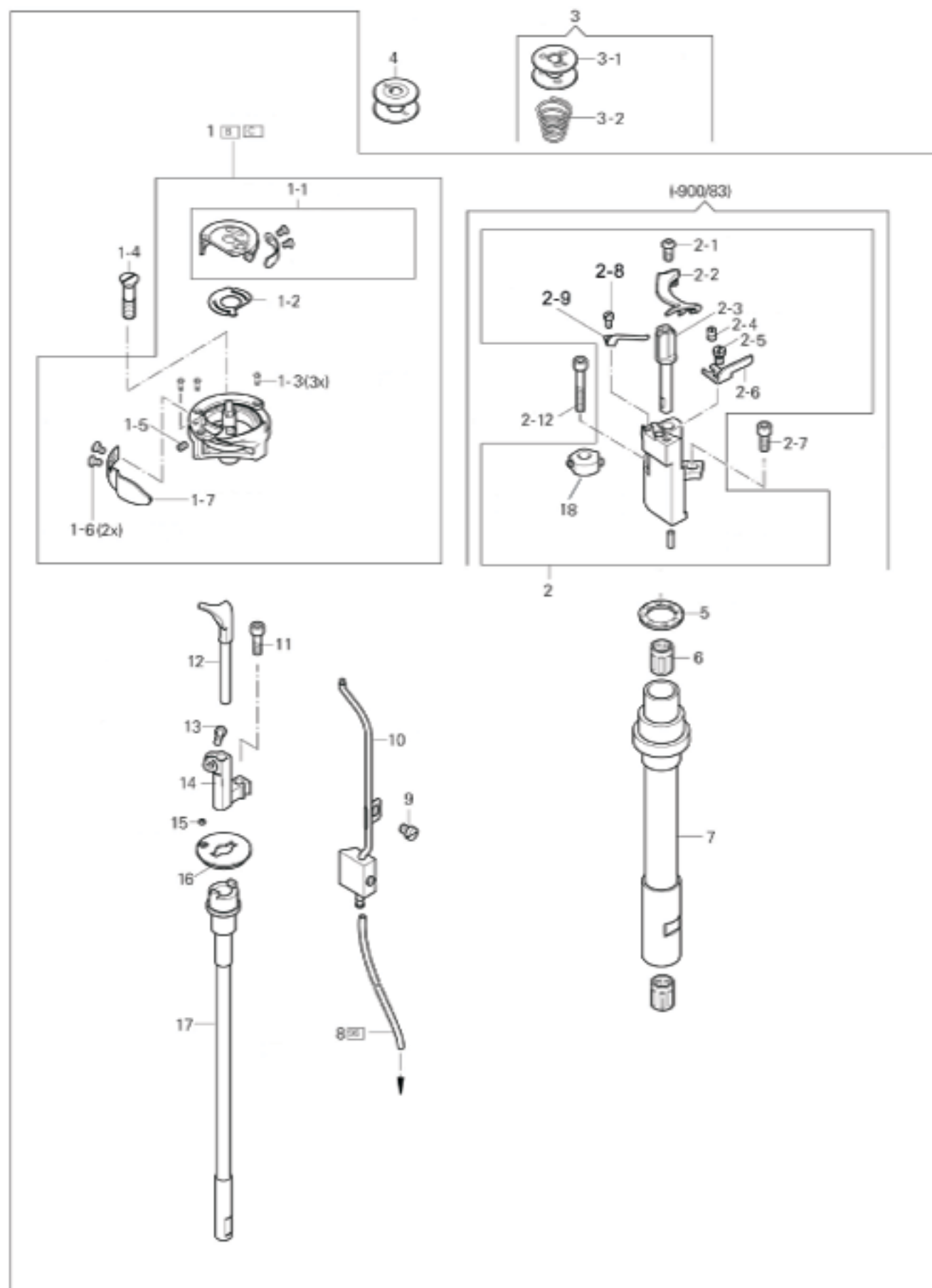
LEFT BEDPLATEED MECHANISM  
左邊座和中座傳動機構



LEFT BEDPLATEED MECHANISM  
左邊座傳動機構

Ref.No.	Part No.	Name Of Part	Amt.req.		Remarks
			單	雙	
1	XFS-263490	Cauldron 大釜	1	2	
1-1	XFS-263489	Bobbin Case Assy 梭殼組	1	2	
1-2	XFS-175690	Noodle Guare Washer 護針片	1	2	
1-3	XFS-137508	Screw 螺絲	3	6	
1-4	XFS-100205	Screw 螺絲	1	2	
1-5	XFS-330085	Screw 螺絲	1	2	
1-6	XFS-137509	Screw 螺絲	2	4	
1-7	XFS-263427	Hook Gib 內梭頭舌	1	2	
2	XFS-774884	Thread trimmer Assy 切綫組件	1	2	
2-1	XFS-180169	Screw 螺絲	2	4	
2-2	XFS-774885	A Movable Knife 活動刀	1	2	
2-3	XFS-774857	Thread trimmer Stand 剪綫刀固定支架	1	2	
2-4	XFS-774854	Screw 螺絲	1	2	
2-5	XFS-774880	Screw 螺絲	1	2	
2-6	XFS-774853	Fixed Blade 固定刀	1	2	
2-7	XFS-130176	Screw 螺絲	1	2	
2-8	XFS-108852	Screw 螺絲	1	2	
2-9	XFS-774856	Clip Wire Cutter 夾綫刀	1	2	
3	XFS-774788	Bobbin Assy 梭仔組件	2	4	
3-1	XFS-774789	Bobbin 梭仔子	1	2	
3-2	XFS-176438	Spring 彈簧	1	2	
4	XFS-118308	Bobbin 梭仔子	1	2	
5	XFS-175283	Washer 華司	1	2	
6	XFS-215031	Needle Bearing 針狀軸承	1	2	
7	XFS-175325	Pull-Off Shaft 釜軸外套管	1	2	
8	XFS-11801	Oli Shaft 油管	1	2	
9	XFS-108168	Screw 螺絲	1	2	
10	XFS-263276	Oli Shaft 油管	2	4	
11	XFS-130179	Screw 螺絲	1	2	
12	XFS-263310	Rotating Hook Opener 牛角	2	4	
13	XFS-108171	Screw 螺絲	1	2	
14	XFS-263142	Driver 牛角固定座	1	2	
15	XFS-120902	Screw 螺絲	1	2	
16	XFS-263206	Hook Shaft Washe 釜軸片	1	2	
17	XFS-263305	Hook Shaft 釜軸	1	2	
18	XFS-263138	Gear 齒輪	1	1	

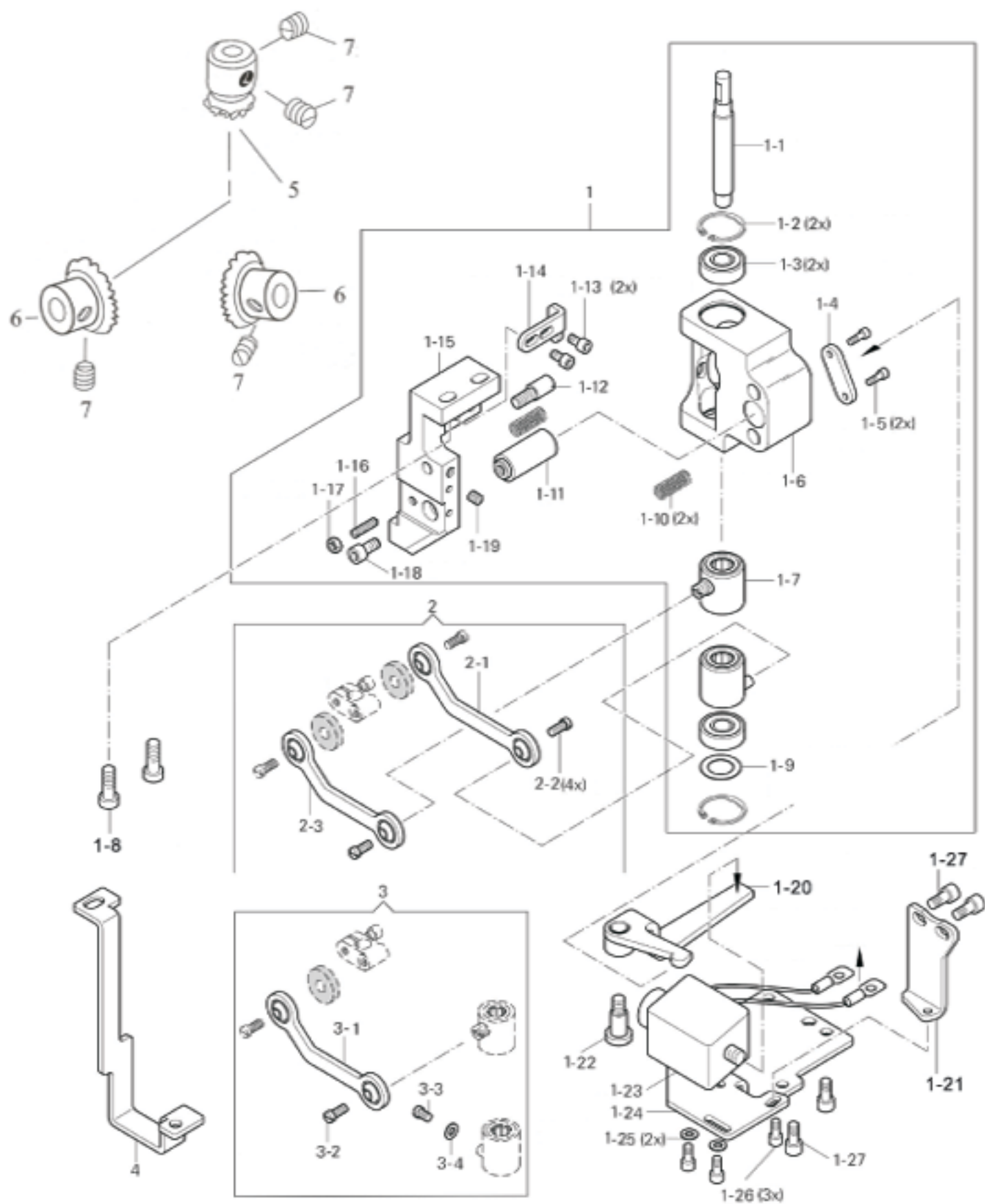
LEFT BEDPLATE FEED MECHANISM  
左邊座傳動機構



RIGHT SIDE BRACKET MECHANISM  
右邊座傳動機構

Ref.No.	Part No.	Name Of Part	Amt.req.		Remarks
			單	雙	
1	XFS-774764	Double needle reverse stitching components 雙針倒縫組件		1	
1-1	XFS-119111	Shaft 培林軸		1	
1-2	XFS-664350	Retaining Ring C形扣環		2	
1-3	XFS-012555	Needle Bearing 滾珠軸承		2	
1-4	XFS-774766	Spring Plate 彈簧固定板		1	
1-5	XFS-130095	Screw 螺絲		2	
1-6	XFS-774762	Bracket 雙針倒縫支架(左)		1	
1-7	XFS-119115	Free-Wheeling seat 單向培林座		1	
1-8	XFS-119112	Screw 螺絲		2	
1-9	XFS-119869	Washer 華司		1	
1-10	XFS-137616	Spring 彈簧		2	
1-11	XFS-774763	Pin 定位銷		1	
1-12	XFS-774765	Screw 螺絲		1	
1-13	XFS-130949	Screw 螺絲		2	
1-14	XFS-774768	Retainer 定位板		1	
1-15	XFS-774761	Bracket 雙針倒縫支架(右)		1	
1-16	XFS-31718	Screw 螺絲		1	
1-17	XFS-024151	Nut 螺帽		1	
1-18	XFS-130224	Screw 螺絲		5	
1-19	XFS-330217	Screw 螺絲		1	
1-20	XFS-774794	Bracket 雙針倒針活動支架		1	
1-21	XFS-774917	Retainer 雙針電磁鐵固定板		1	
1-22	XFS-187022	Screw 螺絲		1	
1-23	XFS-170007	Electromagnet 倒針電磁鐵		1	
1-24	XFS-774795	Retainer 雙針電磁鐵固定板		1	
1-25	XFS-305114	Washer 華司		2	
1-26	XFS-130173	Screw 螺絲		3	
1-27	XFS-130224	Screw 螺絲		4	
2	XFS-263891	Free-Wheeling 單向培林組件		1	
2-1	XFS-263097	Link 雙針萬向連杆		1	
2-2	XFS-100381	Screw 螺絲		4	
2-3	XFS-263095	Link 萬向連杆		1	
3	XFS-263892	Free-Wheeling 單向培林組件		1	
3-1	XFS-263095	Link 萬向連杆		1	
3-2	XFS-100381	Screw 螺絲		2	
3-3	XFS-174167	Screw 螺絲		1	
3-4	XFS-305114	Washer 華司		1	
4	XFS-263085	Bracket 雙針腳架		1	
5	XFS-5045	Bevel Gear(small) 中座齒輪(小)	1	0	
6	XFS-5046	Bevel Gear(medium) 中坐齒輪(中)	2	0	
7	XFS-700689	Screw 螺絲	4	0	(13-15)

RIGHT SIDE BRACKET MECHANISM  
右邊座傳動機構

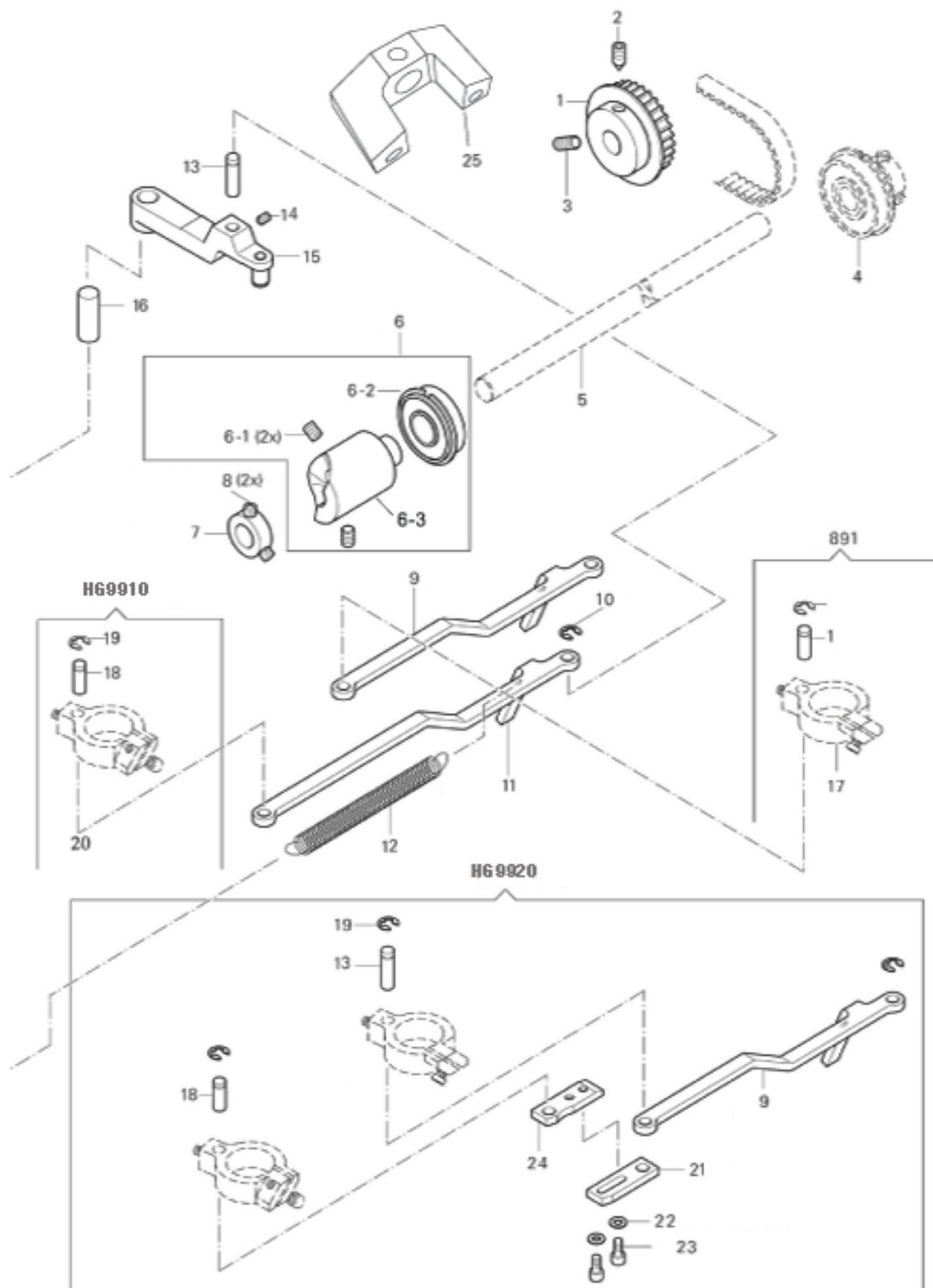




THREDCL TRIMMER  
切綫器機構及其它零件

Ref.No.	Part No.	Name Of Part	Amt.req.		Remarks
			單	雙	
1	XFS-266520	Timing Belt wheel 同步輪	1	1	
2	XFS-330280	Screw 螺絲	1	1	
3	XFS-330280	Screw 螺絲	1	1	
4	XFS-119269	Bearing 軸承	1	1	
5	XFS-119084	Shaft 下軸	1	1	
6	XFS-263423	Crank Cam Array 剪綫凸輪組件	1	1	
6-1	XFS-330960	Screw 螺絲	2	2	
6-2	XFS-018614	Bearing 軸承	1	1	
6-3	XFS-263424	Crank Cam 剪綫凸輪	1	1	
7	XFS-170811	Collar 擋圈	1	1	
8	XFS-330952	Screw 螺絲	2	2	
9	XFS-263160	Stand 剪綫支架(右)	1	1	
10	XFS-640170	E-Ring E形卡環	1	1	
11	XFS-263161	Stand 剪綫支架(左)	1	1	
12	XFS-263329	Spring 彈簧	1	1	
13	XFS-163149	Pin 剪綫支臂銷子	1	1	
14	XFS-330217	Screw 螺絲	1	1	
15	XFS-263158	Supporting Arm 剪綫凸輪支臂	1	2	
16	XFS-033544	Pin 剪綫凸輪支臂銷子	1	2	
17	XFS-263333	Supporting Arm 剪綫支臂(右)	1	1	
18	XFS-263165	Screw 螺絲		2	
19	XFS-640170	Screw 螺絲		1	
20	XFS-263354	Supporting Arm 剪綫支臂(左)		1	
21	XFS-263162	Plate 雙針剪綫固定板(左)		1	
22	XFS-305114	Washer 華司		2	
23	XFS-130173	Screw 螺絲		2	
24	XFS-263163	Plate 雙針剪綫固定板(右)		1	
25	XFS-263164	Shear holder 剪綫固定座		1	

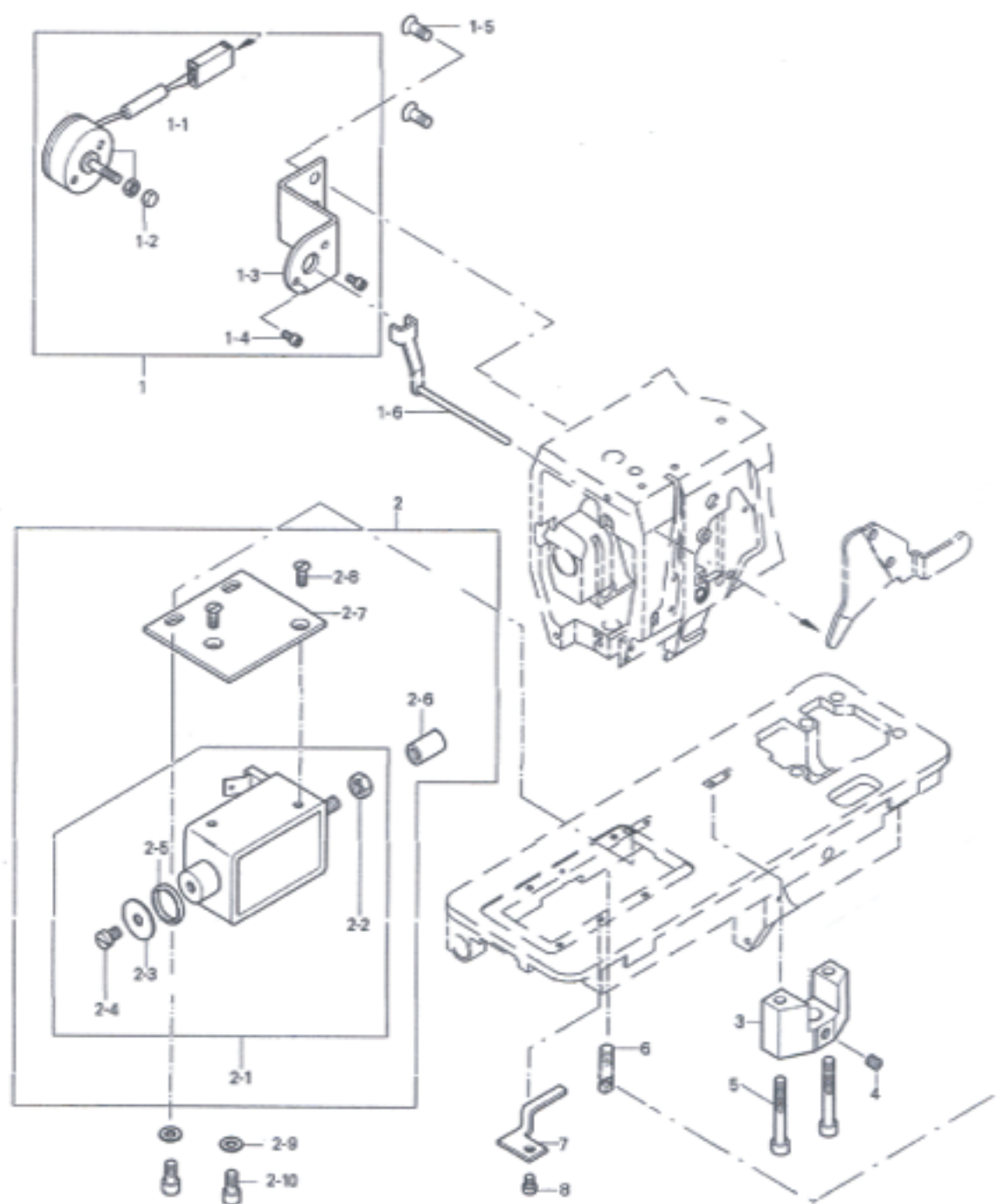
THREDCL TRIMMER  
切綫器機構及其它零件



THREDCL TRIMMER  
切綫器機構及其它零件

Ref.No.	Part No.	Name Of Part	Amt.req.		Remarks
			單	雙	
1	XFS-263242	Loose Line Electromagnet Assy	鬆綫電磁鐵組件	1	1
1-1	XFS-170002-15	Loose line electromagnet	鬆綫電磁鐵	1	1
1-2	XFS-266757	Nut	螺帽	1	1
1-3	XFS-263243	Plate	固定板	1	1
1-4	XFS-130086	Screw	螺絲	2	2
1-5	XFS-225223	Screw	螺絲	2	2
1-6	XFS-263244	Loose line pin	鬆綫銷	1	1
2	XFS-263154	Shear line electromagnet assy	剪綫電磁鐵組件	1	1
2-1	XFS-170002-15	Shear line electromagnet	剪綫電磁鐵	1	1
2-2	XFS-024151	Nut	螺帽	1	1
2-3	XFS-028036	Washer	墊片	1	1
2-4	XFS-108222	Screw	螺絲	1	1
2-5	XFS-120013	Collar	套環	1	1
2-6	XFS-263156	Cushion	膠墊	1	1
2-7	XFS-263155	Plate	固定板	1	1
2-8	XFS-210165	Screw	螺絲	2	2
2-9	XFS-305144	Washer	墊片	2	2
2-10	XFS-130224	Screw	螺絲	2	2
3	XFS-263164	Shear line holder	剪綫支架座	1	1
4	XFS-330952	Screw	螺絲	1	1
5	XFS-130254	Screw	螺絲	2	2
6	XFS-347301	Screw	螺絲	1	1
7	XFS-263359	Shear line plate	剪綫支架座固定板	1	1
8	XFS-108168	Screw	螺絲	1	1

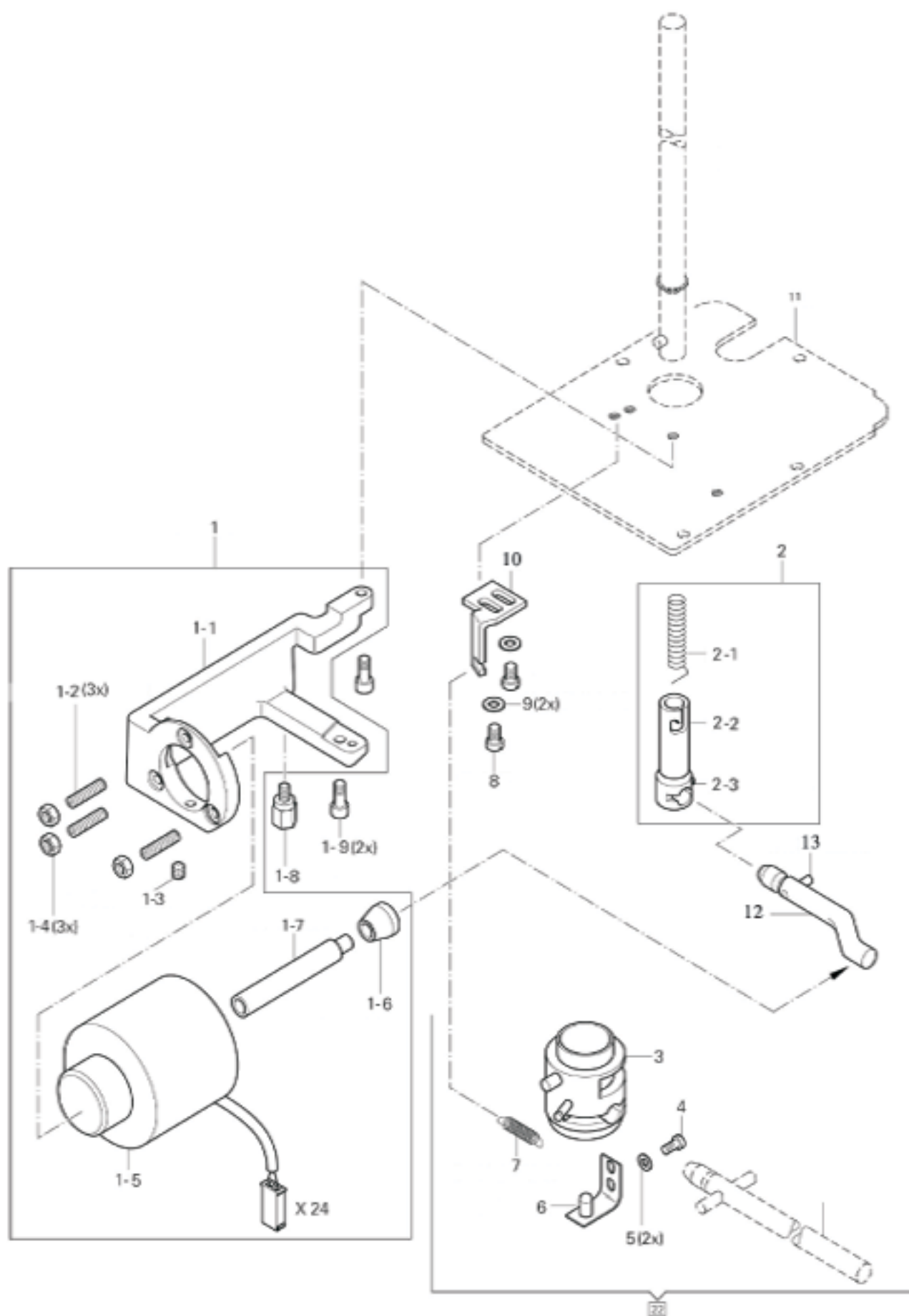
THREDCL TRIMMER  
切縫器機構及其它零件



TOMATIL PRESSER FOOT LIFTEY  
壓腳自動提升機構

Ref.No.	Part No.	Name Of Part		Amt.req.		Remarks
				單	雙	
1	XFS-774732	Automatic Presser Foot Lifter	壓腳自動提升器	1	1	
1-1	XFS-774735	Bracket	壓腳電磁鐵支架	1	1	
1-2	XFS-330292	Screw	螺絲	3	3	
1-3	XFS-330280	Screw	螺絲	1	1	
1-4	XFS-024191	Nut	螺帽	3	3	
1-5	XFS-170002-14	Electromagnet	壓腳電磁鐵	1	1	
1-6	XFS-087752	Press foot electromagnet top pin pads	壓腳電磁鐵頂銷膠墊	1	1	
1-7	XFS-774734	Pin	壓腳電磁鐵頂銷	1	1	
1-8	XFS-774788	Screw	螺絲	1	1	
1-9	XFS-130227	Screw	螺絲	2	2	
2	XFS-171542	Knee lever coupling	炮臺(小)	1	1	
2-1	XFS-171543	Spring	彈簧	1	1	
2-2	XFS-171544	Knee lever coupling	腳壓連杆頭	1	1	
2-3	XFS-330169	screw	螺絲	1	1	
3	XFS-166279	Knee lever coupling	炮臺(大)	1	1	
4	XFS-108171	Screw	螺絲	1	1	
5	XFS-315110	Washer	華司	2	2	
6	XFS-163339	Plate	炮臺銷固定板	1	1	
7	XFS-021123	Spring	彈簧	1	1	
8	XFS-108222	screw	螺絲	2	2	
9	XFS-305114	Washer	華司	2	2	
10	XFS-165439	Retainer	炮臺固定架	1	1	
11	XFS-165408	Bottom	底盤座	1	1	
12	XFS-165437	Shaft	腳押動軸	1	1	
13	XFS-068253	Fort pin	炮臺銷	1	1	

TOMATIL PRESSER FOOT LIFTEY  
壓腳自動提升機構

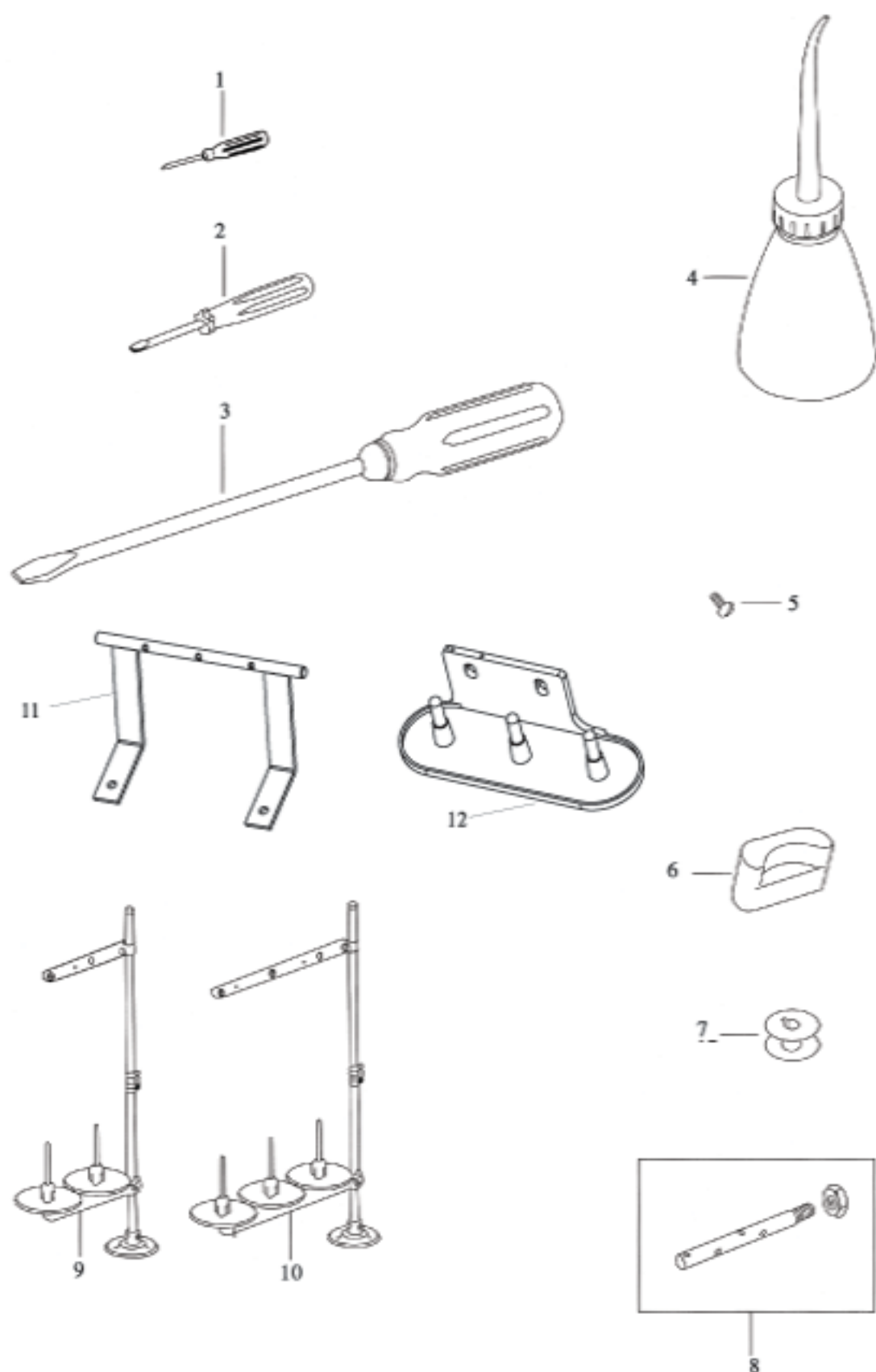




SPECIAL PARTS  
特殊配件

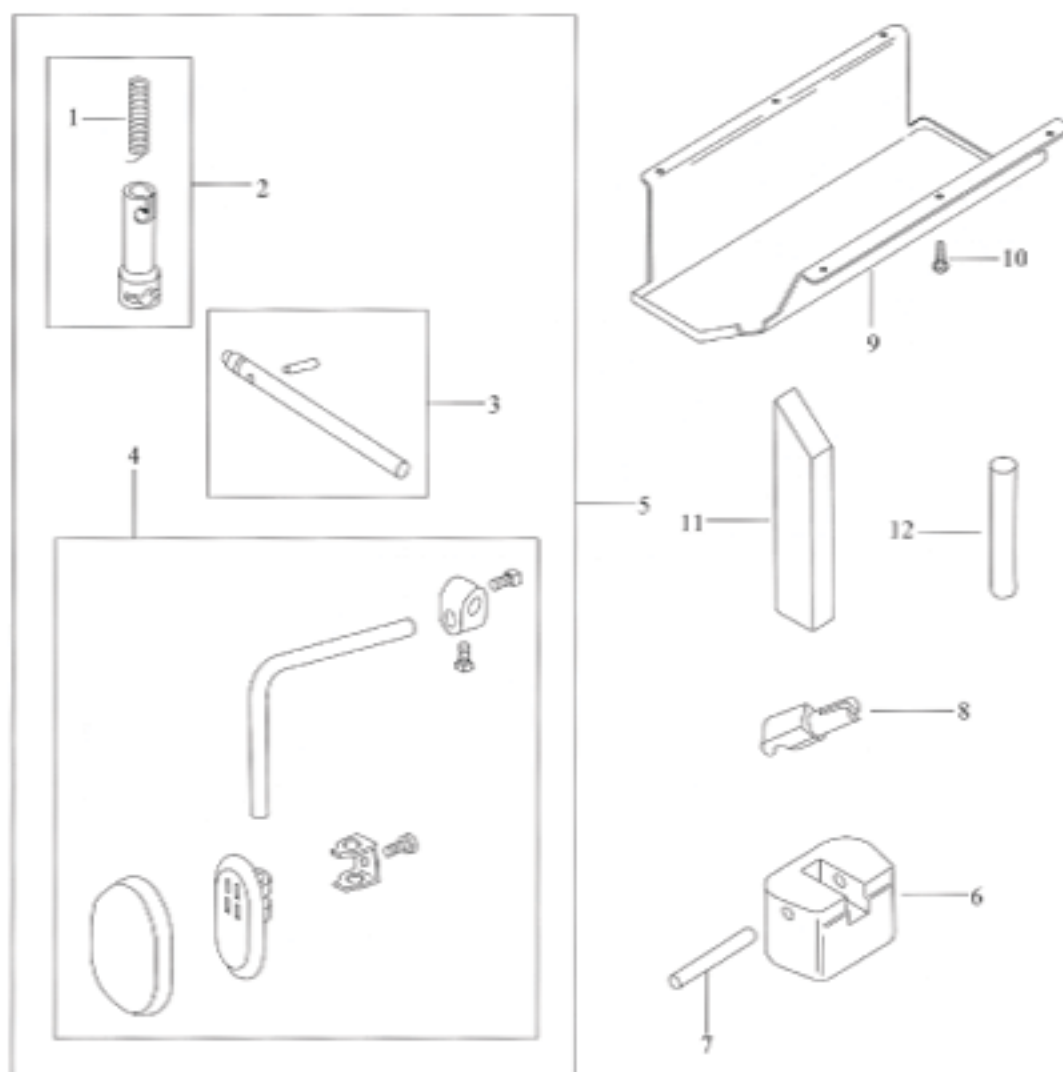
Ref.No.	Part No.	Name Of Part	Amt.req.		Remarks
			單	雙	
1	XFS-129915	Screw Driver(Small)	螺絲起子(小)	1	1
2	XFS-029946	Screw Driver(Middle)	螺絲起子(中)	1	1
3	XFS-029007	Screw Driver(Large)	螺絲起子(大)	1	1
4	XFS-029394	Oiler	油壺	1	1
5	XFS-100355	Screw	螺絲	1	1
6	XFS-032808	Head Cushion	腳墊(小)	2	2
7	XFS-010079	Bobbin	梭仔子	4	4
8	XFS-119026	Spool Pin	過線器	1	1
9	XFS-FPL2	Thread Stand(2-Pole)	單針縫架	1	0
10	XFS-FPL3	Thread Stand(3-Pole)	雙針縫架	0	1
11	XFS-FPL	Thread Stand	縫架	1	1
12	XFS-FPL	Thread Stand	縫架	1	1

SPECIAL PARTS  
特殊配件



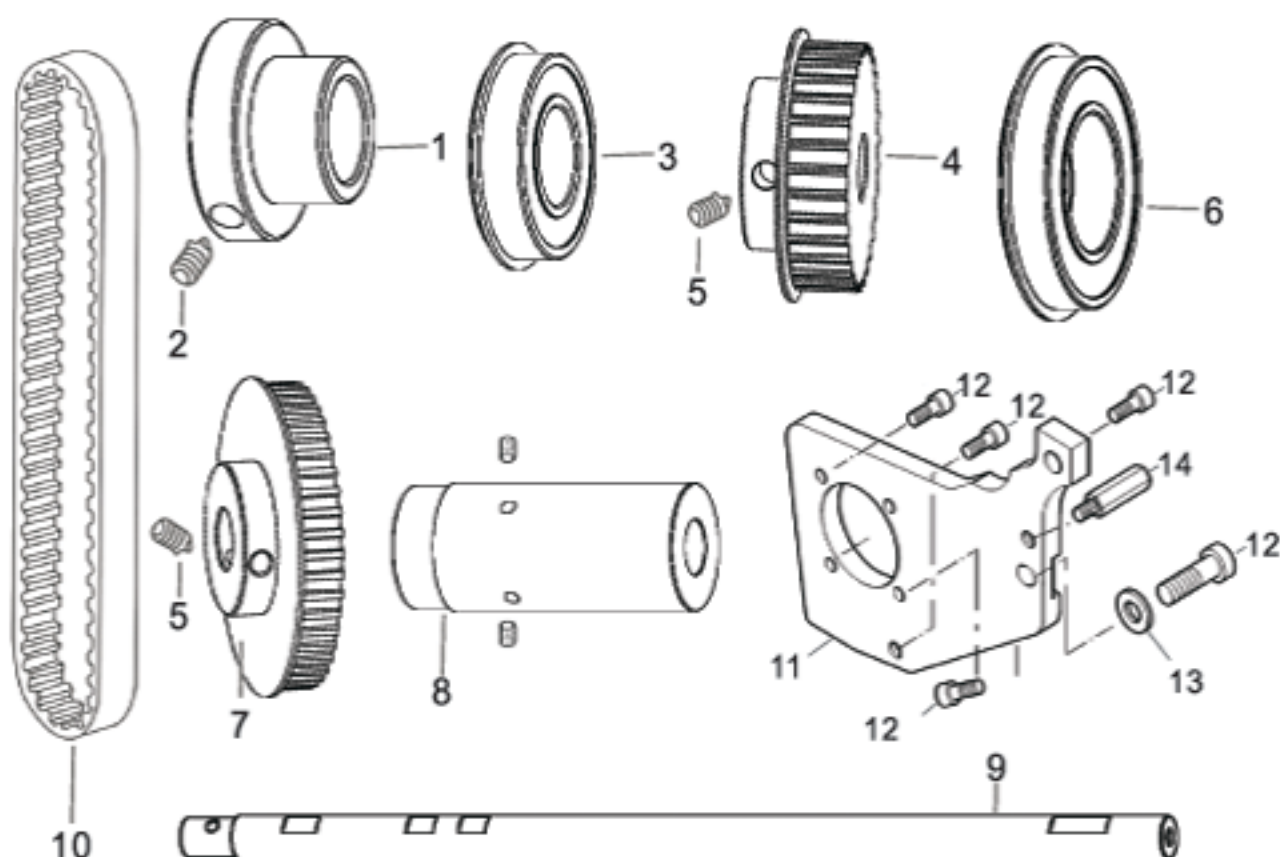
ACCESSORIES  
附件

Ref.No.	Part No.	Name Of Part	Amt.req.		Remarks
			單	雙	
1	XFS-171543	Spring 彈簧	1	1	(2~4)
2	XFS-171542	Knee Lever Coupling 腳押連杆頭	1	1	
3	XFS-171413	Knee Lever Rod 腳押軸	1	1	
4	XFS-171412	Knee Lever Assy 腳弓軸	1	1	
5	XFS-171411	Knee Lever Rod Assy 腳弓押組	1	1	
6	XFS-029934	Hinge Connection Seat 後鉗腳墊(大)	2	2	
7	XFS-030341	Pin 平行梢	2	2	
8	XFS-029450	Hinge Pin 後鉗鉤	2	2	
9	XFS-118636	Oil Pan 油槽	1	1	
10	XFS-460157	Screw 螺絲	6	6	
11	XFS-032717	Head Rest Wood 枕木	1	1	
12	XFS-032717-1	Housing Support Stud 固定梢	1	1	



External accessories  
外挂配件

Ref.No.	Part No.	Name Of Part	Amt.req.		Remarks
			單	雙	
1	XFS-150801	Shaft Sleeve 軸套	1	1	
2	XFS-335903	Screw 螺絲	2	2	
3	XFS-160004	Bearing 軸承	1	1	
4	XFS-150802	Synchronous Wheel 同步輪	1	1	
5	XFS-335902	Screw 螺絲	3	3	
6	XFS-160006	Bearing 軸承	1	1	
7	XFS-150803	Synchronous Wheel 同步輪	1	1	
8	XFS-150804	Long Sleeve 長軸套	1	1	
9	XFS-150805	On The Shaft 上軸	1	1	
10	XFS-069161	The Belt 皮帶	1	1	
11	XFS-266978	Aluminum plate 鋁板	1	1	
12	XFS-130227	Screw 螺絲	4	4	
13	XFS-325210	Gasket 墊片	1	1	
14	XFS-266979	Screw 螺絲	1	1	
15	XFS-330960	Screw 螺絲	2	2	



常見故障 Trouble	產生原因 Cause	處理方法 Remedy
跳針 Stitch Dropping	<p>(1)由機針引起的: 機針彎曲 機針與縫綫規格不符</p> <p>(2)由機針安裝錯誤引起的: 插入不足 插入偏斜</p> <p>(1)Reasons caused by needle Needle curving Needle not fit the thickness of Thread.</p> <p>(2)Reasons caused by wrongly installing needle. When inserting needle, the depth of it is not enough. When inserting needle, the needle is inclined.</p>	<p>換機針。 換上與縫綫粗細相符的機針。 插入至針杆的定位面。 重新裝機針。</p> <p>Replace needle Replace a needle which fit the thickness of thread. Insert needle to the fixed-position plane of needle bar. Re-installing needle.</p>
浮綫 Thread floating	<p>(1)面綫張力過松 (2)挑綫簧過松 (3)底綫張力過大</p> <p>(1)Tension of needle thread is too small. (2)Take-up spring is too loosen. (3)Tension of bobbin thread is too big.</p>	<p>把夾綫調節螺母順時針方向旋轉,調整面綫。 調節挑綫簧張力,縫厚料(針距長)時,應增強張力。 旋緊松心套梭皮螺釘來調節。</p> <p>Turn round tension adjusting nut clockwise to regulate Needle thread. Adjusting the tension of take-up spring, when sewing thicker material (stitch length is long), the tension of Take-up spring should be increased. Tighten the spring plate screw of hook case.</p>
斷綫 Thread Breaking	<p>(1)縫綫質量低劣 (2)由機針引起 機針彎曲 安裝有誤 機針過細(相對縫綫來說)</p> <p>(3)面綫張力過緊</p> <p>(1)The quality of thread is pool... (2)Caused by needle Needle curving Needle installing wrong Needle is too small (compared with thread) (3)The tension of needle thread is too Big.</p>	<p>換上優質縫綫,粗細不勻,有接頭的縫綫不能使用。</p> <p>換新機針。 重新裝機針。 換上與縫綫粗細相符的機針。 調松夾綫螺母。</p> <p>Replace thread which is very good, if the thickness of thread is not even or there is some joint in thread, do not use it. Replace a new needle. Re-installing needle. Replace a needle which fit the thickness of thread. Loosening threading nut.</p>

**上海标准海菱缝制机械有限公司**  
**SHANGHAI BIAOZHUN HAILING SEWING MACHINERY CO., LTD.**

地址: 上海市松江区书林路850号

**ADD: NO.850 Shulin Road, Songjiang District Shanghai, P.R.China**

邮编: 201612

**Zip Code: 201612**

内销业务: 电话: 86-21-64061284 传真: 86-21-64462799

零件服务: 电话: 86-21-64851424 传真: 86-21-64069792

**Overseas Business: TEL: 86-21-64853303 FAX: 86-21-64854304**

**E-mail:sales@highlead.com.cn    <http://www.highlead.com.cn>**

制造商保留因技术改进而更改内容的权利, 恕不另行通知

The description covered in this manual is subject to change for improvement of the commodity without notice

2019.9 印制 Printed