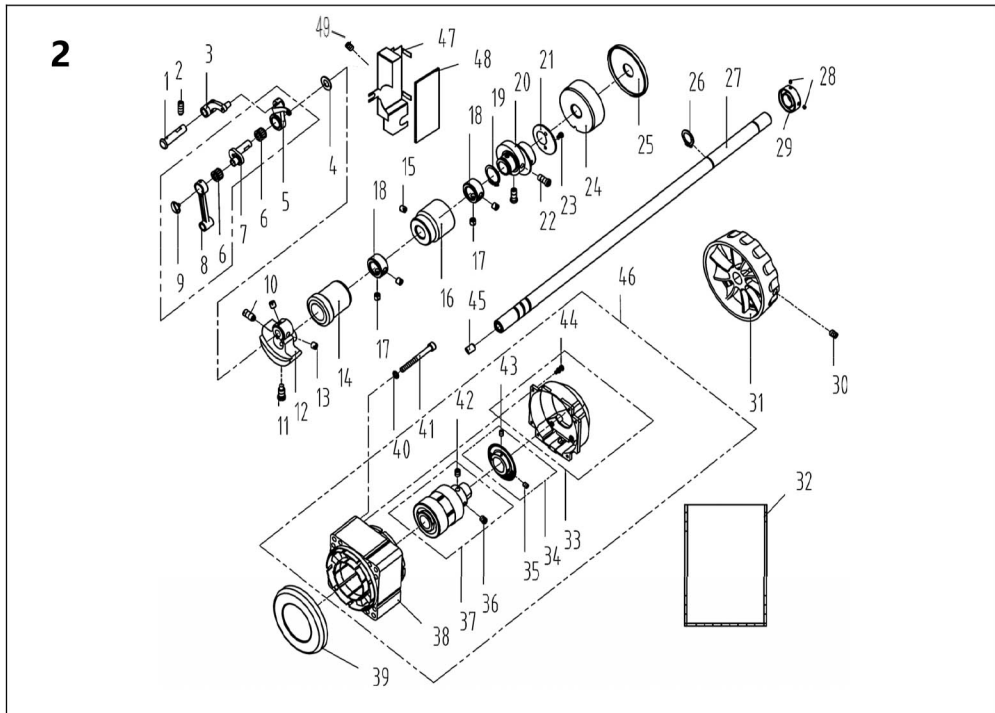


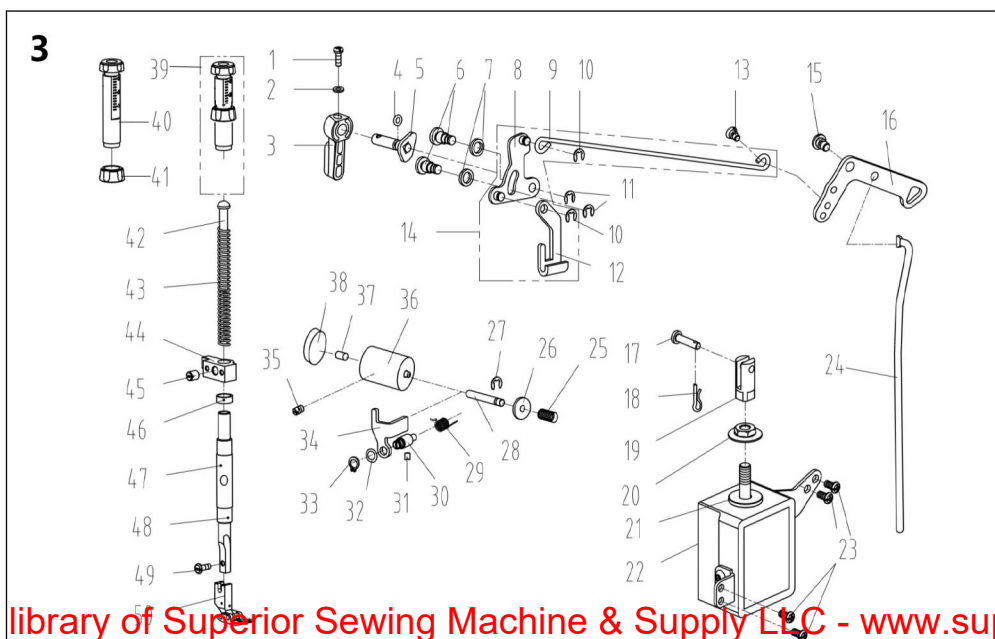
1. 机壳、外装部件/Machine Frame & Miscellaneous Cover Components

序号 NO	公司件号 Part NO	名称 PartName	零件描述 Description	数量 Number
1	101S11001	螺钉SM3/16"×28 L=9	Screw SM3/16"×28 L=9	15
2	10122003	面板调节孔螺塞	Rubber plug	2
3	115037001	面板商标牌	Head card	1
4	930000262	面板(喷漆)	Face plate asm	1
5	115001003	面板	Face plate asm	1
6	13813005	左线钩	Thread guide left	1
7	115022002	面板垫	Face plate gasket	1
8	101S11027	螺钉SM1/8"×44 L=3.4	Screw SM1/8"×44 L=3.4	1
9	113812019	面部防油板	Face oil shield asm	1
	11412082	面部防油板(厚料)	Face oil shield asm(H)	1
10	11503002100	倒缝开关组件(三开关)(琦星)	Three switch components(Q)	1
	11503000600	倒缝开关组件(三开关)(鲍麦)	Three switch components(Power Max)	1
11	101S11004	螺钉SM3/16"×28 L=7	Screw SM3/16"×28 L=7	2
12	13812018	挑线杆防护罩	Thread take-up lever cover	1
13	10122004	针杆曲柄螺孔塞	Rubber plug	1
14	10122005	挑线连杆销螺孔塞	Rubber plug	1
15	101S11004	螺钉SM3/16"×28 L=7	Screw SM3/16"×28 L=7	1
16	13512004	三孔线钩	3-hole thread guide	1
17	10122005	挑线连杆销螺孔塞	Rubber plug	1
18	114511015	螺钉SM9/64"×40 L=6	Screw SM9/64"×40 L=6	2
19	11419001	割线刀	Knife	1
20	138505001	螺钉M3 L=12	Screw M3 L=12	2
21	13822001	操作屏孔塞	Rubber plug	2
22	21012018	油封垫	Oil sealing washer	1
23	21022007	油封	Rubber plug	1
24	114922003	后窗板垫	Side plate gasket	1
25	114912001	后窗板	Side plate	1
26	930000236	后窗板(喷漆)	Side plate	1
27	13812109	侧盖固定板	Fixed plate	1
28	S04010	螺钉M4 L=5.5	Screw M4 L=5.5	1
29	H05002	卡簧3	Circlip 3	1
30	138530007	侧盖螺钉SM3/16"×28	Screw SM3/16"×28	1
31	113811004	尼龙扎带	Cable band	6
32	115026002	电控罩壳销	Pin	1
33	11503001400	一体机电控罩壳(鲍麦)	Servo motor box(Power Max)	1
	11503003100	一体机电控罩壳(鲍麦)(+)	Servo motor box(Power Max)(+)	1
34	11503001300	一体机电控组件(鲍麦)	Electronic components(Power Max)	1
35	11503001100	一体机电控组件(琦星)	Electronic components(Q)	1
36	114513001	螺栓(内六角)M5 L=20	Screw M5 L=20	1
	114513001	螺栓(内六角)M5 L=20(鲍麦)	Screw M5 L=20(Power Max)	4
	S05901	内六角圆柱头螺钉M5 L=50(琦星)	Screw M5 L=50(Q)	3
37	W01009	垫圈 5	Washer 5	3
38	114130006	无线通信模块(+)	RF wireless data communication module(+)	1
39	10122007	下轴工艺孔塞	Rubber plug	1
40	11503003300	一体机电控面板组件(琦星)	Control panel(Q)	1
	11503001200	一体机电控面板组件(鲍麦)	Control panel(Power Max)	1
	11503003000	一体机电控面板组件(鲍麦)(+)	Control panel(Power Max)(+)	1
41	14322007	橡皮塞(双孔)	Rubber plug	1
42	138508006	螺钉SM3/16"×28 L=7	Screw SM3/16"×28 L=7	1
43	13810008	小夹线器螺柱	Thread tension post	1
44	13812066	过线板	Thread tension guide plate	1
45	14112017	小夹线板	Thread tension disk	2
46	11227001	小夹线弹簧	Thread tension spring	1
47	141S16019	小夹线器螺母	Thread tension nut	1
48	1411300400	小夹线器组件	Thread tension asm	1
49	11411300200	夹线器组件	Thread tension asm	1
	1411300500	夹线器组件(厚料)	Thread tension asm(H)	1
50	141S16013	夹线螺母	Thread tension nut	1
51	10112007	夹线制动板	Thread disk rotating stopper	1
52	10127002	夹线弹簧	Thread tension spring	1
53	11427050	夹线弹簧(厚料)	Thread tension spring A (H)	1
54	14112016	松线板	Disk stopper	1
55	14112015	夹线板	Thread tension disk	2
56	141S30001	夹线螺钉	Thread tension post	1
	10127001	挑线簧	Thread take-up spring	1
	10127031	挑线簧(厚料)	Thread take-up spring(H)	1
57	10103011	挑线簧调节座	Thread tension base	1
58	10122014	挑线簧调节座O型圈	Rubber ring	1
59	101S15005	螺钉SM9/64"×40 L=5.5	Screw SM9/64"×40 L=5.5	1
60	11326012	松线钉	Tension release pin	1
61	101S11007	螺钉SM11/64"×40 L=6	Screw SM11/64"×40 L=6	2
62	10113004	右线钩	Thread guide right	2
63	101S15010	螺钉SM15/64"×28 L=10.5	Screw SM15/64"×28 L=10.5	1
64	401S16001	螺母SM9/64"×40	Nut SM9/64"×40	1
65	11413011	固定式缓线钩	Thread guide	1
66	101S11002	螺钉SM11/64"×40 L=5.5	Screw SM11/64"×40 L=5.5	1
67	13812019	卷边器座	Ruler stop seat	1
68	207S14007	凹端紧定螺钉 M4 L=6	Screw M4 L=6	1
69	11493000300	电子夹线器组件	Nest less e-device	1
70	104517002	针板螺钉SM11/64"×40 L=6.5	Screw SM11/64"×40 L=6.5	2
	13815011	针板(2.0)	Needle plate	1
71	11315001	针板(厚料)	Needle plate(H)	1
	10815001	针板(-7)	Needle plate(-7)	1
72	140S12001	底板支柱	Machine head stud	2
73	101S11019	螺钉SM3/32"×56 L=2	Slide plate SM3/32"×56 L=2	2
	101S11005	推板	Slide plate Sliding	1
74	10115002	推板	Screw SM3/32"×56 L=2	1
75	101S11026	螺钉SM15/64"×28 L=9	Screw SM15/64"×28 L=9	1



2. 上轴、挑线部件/Main Shaft & Thread Take-up Components

序号NO	公司件号	Part NO	名称	PartName	零件描述	Description	数量	Number
1	10126001		挑线连杆销	Thread take-up connecting rod pin			1	
2	101S15001		螺钉SM15/64"x28 L=15	Screw SM15/64"x28 L=15			1	
3	10105001		挑线连杆	Thread take-up connecting rod(H)			1	
4	10112003		针杆曲柄护板	Needle bar crank protecting plate			1	
5	1013800100		挑线杆分组件	Thread take-up lever asm			1	
	1133800200		挑线杆组件(厚料)	Thread take-up lever asm(H)			1	
6	10124001		挑线杆滚针轴承	Needle bearing			2	
	1011000100		挑线曲柄分部件	Thread take-up crank			1	
7	1011000400		挑线曲柄分部件(厚料)	Thread take-up crank(H)			1	
	11310010		挑线曲柄分部件(中厚料)	Thread take-up crank(H-M)			1	
8	10105002		针杆连杆	Needle bar connecting rod			1	
9	101S17001		螺钉SM9/64"x40(左旋) L=4.8	Screw SM9/64"x40(左旋) L=4.8			1	
10	101S15004		螺钉SM9/32"x28 L=16	Screw SM9/32"x28 L=16			1	
11	101S11003		螺钉SM9/32"x28 L=16	Screw SM9/32"x28 L=16			1	
12	10404001		针杆曲柄	Needle bar crank			1	
	11404035		针杆曲柄(厚料)	Needle bar crank(H)			1	
13	101S15002		螺钉SM1/4"x40 L=6	Screw SM1/4"x40 L=6			2	
14	1140300200		上轴前轴套组件	Main shaft bushing front			1	
15	101S15006		螺钉SM15/64"x28 L=7	Screw SM15/64"x28 L=7			1	
16	12203002		主轴中轴套	Main shaft bushing mid			1	
17	101S14001		螺钉SM1/4"x40 L=6	Screw SM1/4"x40 L=6			4	
18	10108001		上轴挡圈	Main shaft thrust collar			2	
19	H03002		挡圈20	Snap ring 20			1	
	400092		送料偏心轮	Feed eccentric cam			1	
	400006		送料偏心轮(中厚料)(H-7)	Feed eccentric cam (H-M)(H-7)			1	
21	10112017		送料偏心轮盖板	Cover plate			1	
22	101S11013		螺钉SM1/4"x40 L=13	Screw SM1/4"x40 L=13			2	
23	113S11003		螺钉SM9/64"x40 L=5	Screw SM9/64"x40 L=5			2	
24	13803002		上轴后轴套	The rear axle sleeve			1	
25	10122105		上轴后套挡油密封	Oil seal			1	
26	H03001		GB/T894.1-1986挡圈15	Snap ring 15			1	
27	115002002		上轴	Main shaft			1	
28	S10026		螺钉M3 L=3	Screw M3 L=3			2	
29	115008001		电机防尘套	Motor dust jacket			1	
30	S10009		螺钉	Screw			2	
31	302830		手轮(喷漆)	Handwheel			1	
32	13831015		塑料袋28x18(cm)厚0.03mm	Plastic bag 28cmx18cmx0.03mm			1	
33	195100073		电机罩壳组件(配琦星)	Motor cover asm(Q)			1	
	95100172		电机罩壳组件(配鲍麦)	Motor cover asm(Power Max)			1	
34	195100112		电机光栅组件(配琦星)	Motor grating sensor asm(Q)			1	
	95100116		电机光栅组件(配鲍麦)	Motor grating sensor asm(Power Max)			1	
35	S09022		内六角平端紧定螺钉M3 L=4	Screw M3 L=4			1	
36	S09162		内六角平端紧定螺钉M6 L=6	Screw M6 L=6			1	
37	95100182		电机转子总成	Motor rotor			1	
38	95100171		电机定子总成	Motor stator			1	
39	13811060		电机绝缘防护罩	Motor insulation shield			1	
40	W02058		GB 93-1987弹垫d5	Spring washer 5			3	
41	S05901		螺钉M5 L=50	Screw M5 L=50			3	
42	S09162		内六角平端紧定螺钉M6 L=6	Screw M6 L=8			1	
43	S09022		内六角平端紧定螺钉M3 L=4	Screw M3 L=4			1	
44	951S15011		螺钉组合件M3 L=12	Screw Asm M3 L=12			5	
45	10122012		上轴孔塞	Rubber plug			1	
46	115033007		光电伺服电机(琦星)	Motor(Q)			1	
	113833087		光电伺服电机(鲍麦)	Motor(Power Max)			1	
47	14112004		防油罩	Oil shield			1	
48	14123001		防油罩油棉	Oil cotton			1	
49	141S11002		螺钉SM3/16"x28 L=4.5	Screw SM3/16"x28 L=4.5			1	



3. 压料、自动抬压脚部件(1)/Presser Bar & Auto Lifter Components (1)

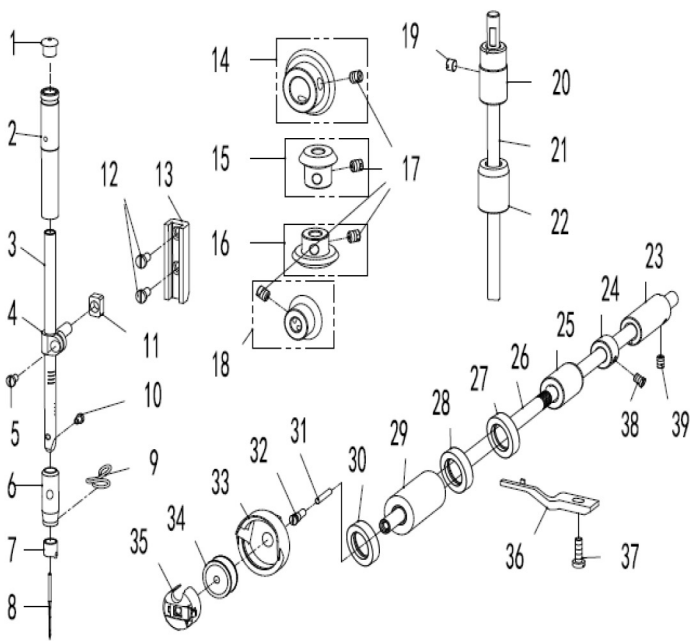
序号NO	公司件号	Part NO	名称	PartName	零件描述	Description	数量	Number
1	101S11010		压脚扳手螺钉SM9/64"x40 L=11		Screw SM9/64"x40 L=11		1	
2	10128002		压脚扳手螺钉垫圈		Washer		1	
3	13811029		压脚扳手		Hand lifter		1	
4	O01004		O型圈		Rubber ring		1	
5	1411000200		压脚扳手凸轮分部件		Hand lifter cam asm.		1	
6	101S20001		前杠杆螺纹销		Screw		2	
7	10128015		螺纹销橡胶垫圈		Washer		2	
8	1411201100		抬压脚前杠杆分部件		Lift front lever component		1	
9	14312012		抬压脚拉杆		Knee lifter pull rod		1	
10	H05003		GB/T896-1986挡圈 5		Snap ring		2	
11	11329020		挡圈 5		Snap ring		2	
12	14112018		压脚升降板		Lifting plate		1	
13	101S20004		抬压脚拉杆螺钉SM3/16"x32		Hinge Screw SM3/16"x32		1	
14	1431201200		抬压脚前杠杆组件		Knee lifter lever asm		1	
15	101S20003		后杠杆轴位螺钉SM15/64"x28		Hinge screw SM15/64"x28		1	
16	11312034		抬压脚后杠杆		Knee lifter back lever		1	
17	11326005		销子		Pin		1	
18	113829001		R形弹性开口销φ1.5		Cotter pin		1	
19	11326006		电磁铁接头		Solenoid connector		1	
20	113516004		法兰螺母M8		Flange nuts M8		1	
21	11322008		电磁铁上垫片		washer		1	
22	11493000600		抬压脚电磁铁组件		Solenoid asm.		1	
23	101S11001		螺钉SM3/16"×28 L=9		Screw SM3/16"×28 L=9		4	
24	114112022		抬压脚顶杆		Knee lifter connecting rod		1	
25	10127003		松线辅打弹簧		Spring		1	
26	10128001		松线辅打垫片		Washer		1	
27	H05012		挡圈4 (日标)		Snap ring		1	
28	10126003		松线辅打		Thread release supporting pin		1	
29	114127002		松线顶板复位簧		Spring		1	
30	115026001		松线顶板连接销		Pin		1	
31	138S08006		螺钉SM3/16 "x28 L=7		Screw SM3/16 "x28 L=7		1	
32	14128001		松线顶板垫片		Loose top gasket		1	
33	H03054		GB/T894.1-1986挡圈6		Snap ring 6		1	
34	14101017		松线顶板		Wire release plate		1	
35	138S08006		螺钉SM3/16 " L=7		Screw SM3/16 " L=7		1	
36	11503002000		松线电磁铁组件		Solenoid		1	
37	12922015		橡皮塞		Spout plug		1	
38	114122006		松线油封		Oil seal		1	
39	11381101800		调压螺钉组件		Presser regulating screw nut asm		1	
40	1138NS30003		调压螺钉(厚料)		Press regulating screw (H)		1	
41	1138NS16005		调压螺母(厚料)		Press regulating nut(H)		1	
42	10102003		调压导杆		Press regulating guide bar		1	
43	113827010		调压簧		Press regulating spring		1	
43	10127024		调压簧(厚料)		Press regulating spring(H)		1	
44	13809030		压杆导架		Presser bar guide bracket		1	
45	101S15007		螺钉 SM1/4"x40 L=8		Screw SM1/4"x40 L=8		1	
46	10123112		压杆油塞		Presser bar bushing		1	
47	113803007		压杆衬套		Presser bar bushing/liner		1	

3. 压料、自动抬压脚部件(2)/Presser Bar & Auto Lifter Components (2)

序号NO	公司件号 Part NO	名称 PartName	零件描述 Description	数量 Number
48	113802009	压杆	Presser bar	1
49	101S11009	螺钉SM9/64"x40 L=10.5	Screw SM9/64"x40 L=10.5	1
50	1131600600	压脚组件	Presser foot asm	1
	1131600300	压脚组件(料)	Presser foot asm(H)	1

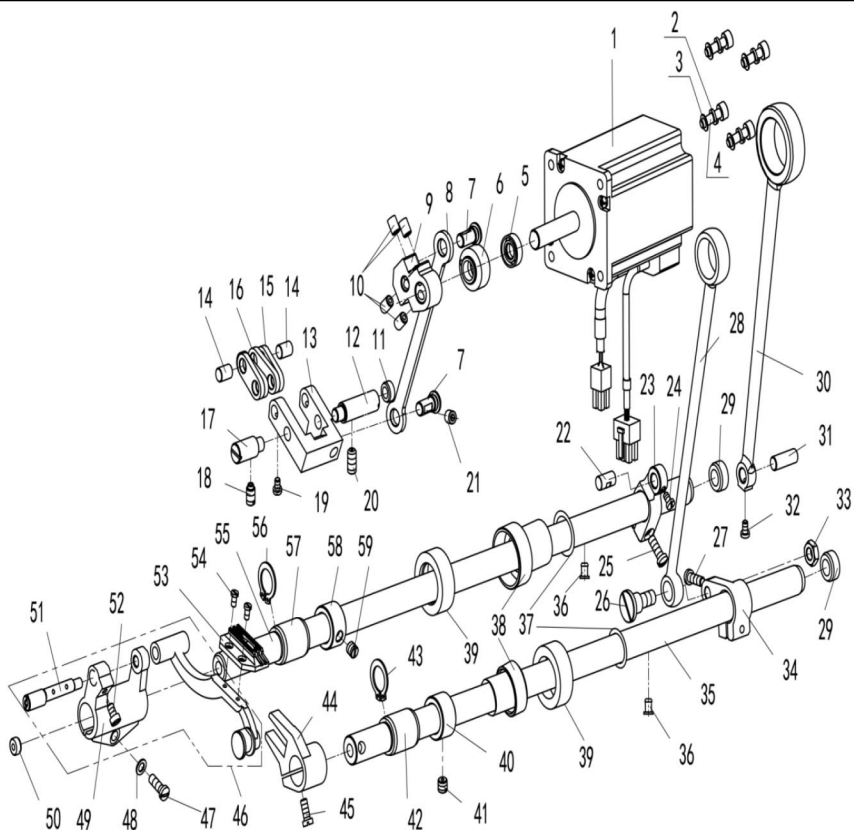
Library of Superior Sewing Machine & Supply LLC - www.superiorsewing.com

4



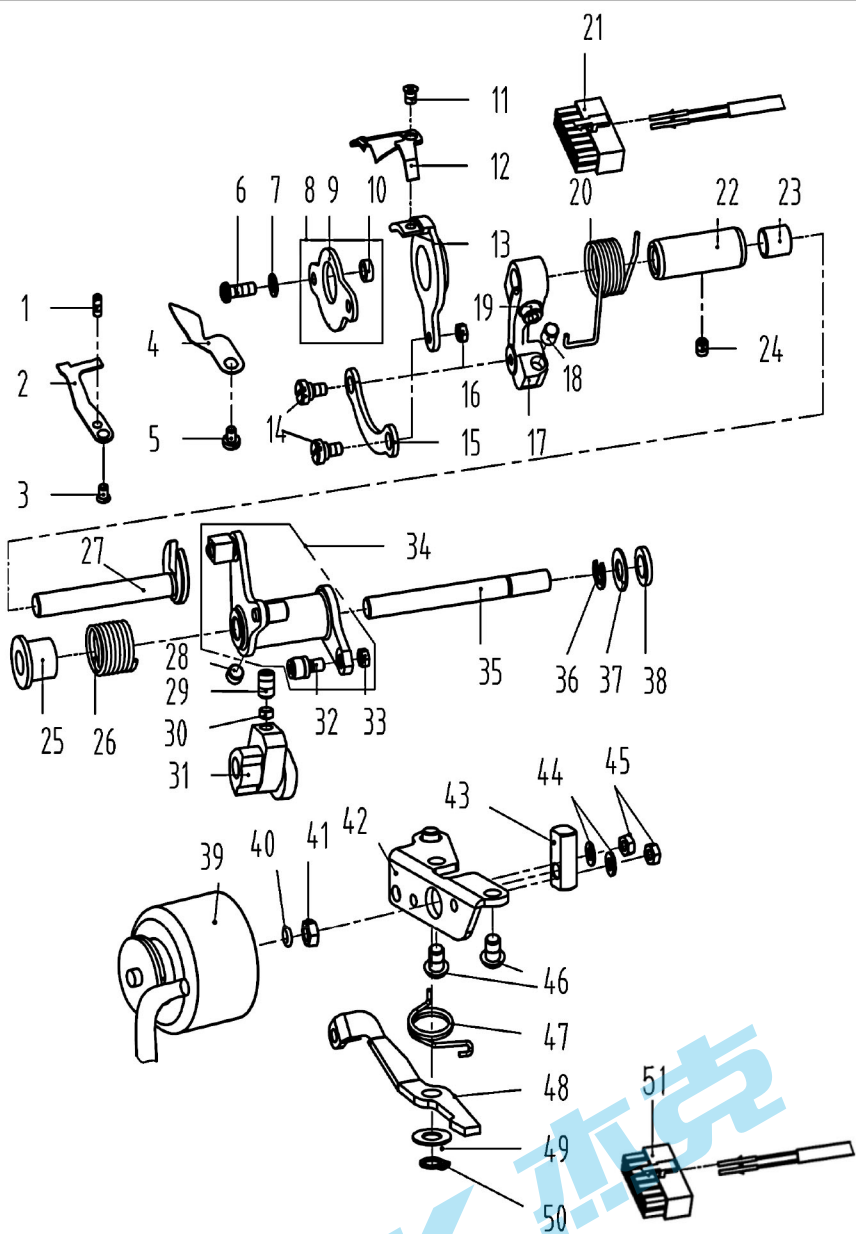
4. 针杆、竖轴、下轴部件/Needle bar & Upright Shaft & Hook Driving Shaft Components

序号NO	公司件号	Part NO	名称	PartName	零件描述	Description	数量	Number
1	10122013		针杆上衬套孔塞		Rubber plug		1	1
2	14103009		针杆上衬套		Needle bar bushing upper		1	1
	10103009		针杆上衬套(厚料)		Needle bar bushing upper(H)		1	1
3	11402039		针杆		Needle bar		1	1
	10102021		针杆(厚料)		Needle bar (H)		1	1
4	10138002		针杆连接柱		Needle bar connecting rod		1	1
5	101511005		螺钉SM9/64"x40 L=6		Screw SM9/64"x40 L=6		1	1
6	10103010		针杆下衬套		Needle bar bushing lower		1	1
	11303023		针杆下衬套(厚料)		Needle bar bushing lower(H)		1	1
7	10113002		针杆线勾		Needle bar thread guide		1	1
	11412063		针杆线勾(厚料)		Needle bar thread guide(H)		1	1
8	13817001		机针(定位14#)		Needle		1	1
	10117002		机针DP×5#21(厚料)		Needle(H)		1	1
9	10413001		针杆下衬套线勾		Lower bushing thread guide		1	1
	10113009		针杆下衬套线勾(厚料)		Lower bushing thread guide(H)		1	1
10	104511006		螺钉(进口) SM1/8"x44 L=4.5		Screw SM1/8"x44 L=4.5		1	1
11	10109001		针杆连接柱滑块		Slide block		1	1
12	101511008		螺钉SM11/64"x40 L=8		Screw SM11/64"x40 L=8		2	2
13	10109002		针杆接头滑块导轨		Needle bar guide		1	1
14	10425004		上轴伞齿轮		Upper shaft bevel gear		1	1
15	10425003		竖轴上伞齿轮		Upper small bevel gear asm		1	1
16	10425002		竖轴下伞齿轮		Lower large bevel gear asm		1	1
17	101515014		螺钉SM1/4"x40 L=7		Screw SM1/4"x40 L=7		8	8
18	10425001		下轴伞齿轮		Hook drive shaft bevel gear		1	1
19	113511036		螺钉SM15/64"x28 L=4.7		Screw SM15/64"x28 L=4.7		1	1
20	10403020		竖轴上轴套		Upright shaft bushing upper		1	1
21	10102007		竖轴		Upright shaft		1	1
22	113803004		竖轴下轴套		Upright shaft bushing lower		1	1
23	10403019		下轴后轴套		Hook driving shaft bushing back		1	1
24	115008002		下轴挡圈		Hook driving shaft snap ring		1	1
25	14003004		下轴中套		Lower shaft middle bushing		1	1
26	14402003		下轴		Hook driving shaft		1	1
27	11522001		油封组件12		Oil seal 12		1	1
28	114122004		下轴前套油封(大)		Oil seal		1	1
29	14003001		下轴前轴套组件		Hook driving shaft bushing front		1	1
30	1142201600		油封组件		Oil seal		1	1
31	13823001		下轴限油芯		Oil wick		1	1
32	101530005		下轴限油螺钉SM3/16"×32		Set screw SM3/16"×32		1	1
33	11418003		广濂中厚料旋梭(扩大缝纫范围)		Hook asm (Hirose)		1	1
	11418004		广濂厚料旋梭(新)(有尾巴)(厚料)		Hook asm(Hirose)(H)		1	1
34	10118003		梭心		Bobbin		1	1
35	11218504		梭壳		Bobbin case asm.		1	1
36	10112016		旋梭定位钩		Finger postioner		1	1
	10112032		旋梭定位钩(厚料)		Finger postioner(H)		1	1
37	116510006		螺钉SM11/64"x40 L=8		Screw SM11/64"x40 L=8		1	1
38	101511012		螺钉SM11/64"x40 L=8		Screw SM11/64"x40 L=8		2	2
39	113514020		螺钉SM11/64"x40 L=6		Screw SM11/64"x40 L=6		1	1



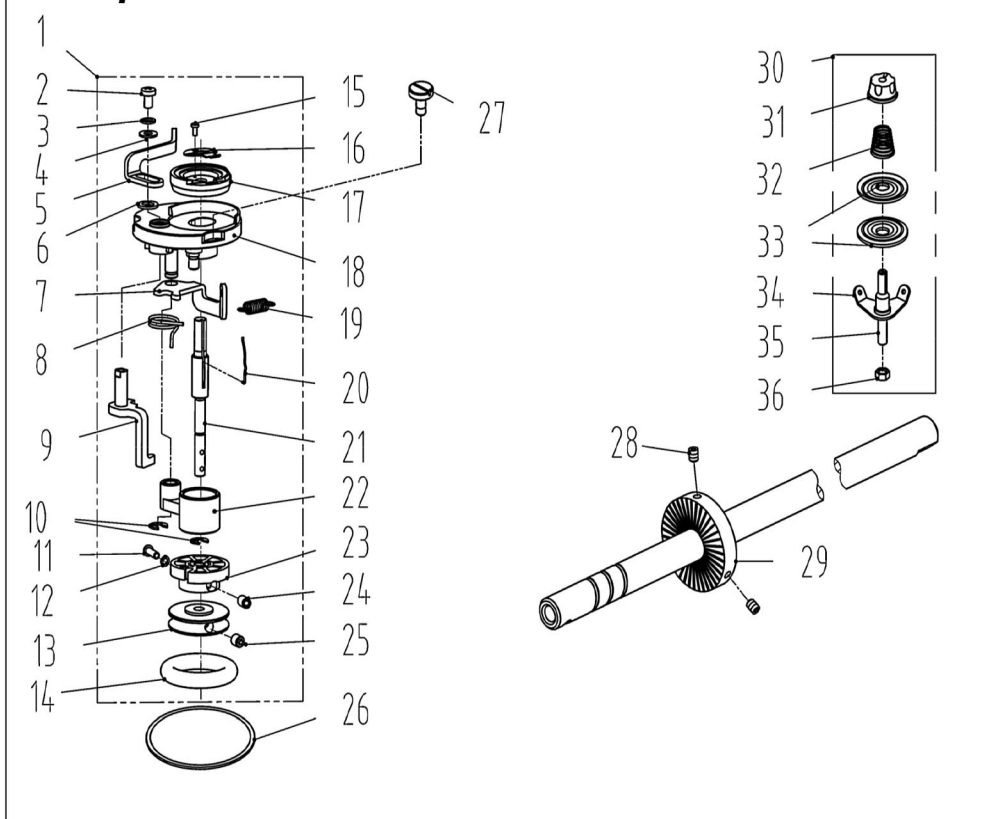
5. 送料部件/Feed Mechanism Components

序号NO	公司件号	Part NO	名称	PartName	零件描述	Description	数量	Number
1	115033004		步进电机(琦星1000线)(-7)		Stepper motor(Q)(-7)		1	
	115033002		步进电机(鲍麦)		Stepper motor(Power Max)		1	
2	W03002		弹簧垫圈5		Spring washer 5		4	
3	10128003		平垫圈5		Washer 16		4	
4	409511020		螺钉SM3/16"x28 L=15.5		Screw SM3/16"x28 L=15.5		4	
5	114922002		步进电机轴套油封		Stepper motor bushing oil seal		1	
6	114903001		步进电机轴套		Stepper motor bushing		1	
7	114926001		针距曲柄销		Needl gage crank pin		2	
8	114905001		针距连杆		Needle pitch rod		1	
9	114904001		针距曲柄		Needl gage crank		1	
10	S10009		螺钉M6 L=8		Screw M6 L=8		4	
11	14022015		右销孔塞		spout plug		1	
12	10126010		送料摆动板座右销		Right pin		1	
	114901001		送料摆动板座		Feed shaking plate bed components		1	
13	114901004		送料摆动板座(-7)		Feed shaking plate bed components(-7)		1	
14	10126007		短摆动板连杆销		Connecting pin		2	
	11412022		送料短摆动板		Feed short shaking plate		2	
15	13809007		送料短摆动板(厚料)		Feed short shaking plate(H)		2	
16	13809008		送料长摆动板		Feed long shaking plate		2	
17	10126009		送料摆动板座右销		Left pin		1	
18	101515010		螺钉 SM15/64"x28 L=10.5		Screw SM15/64"x28 L=10.5		1	
19	101511005		螺钉 SM9/64"x40 L=6		Screw SM9/64"x40 L=6		2	
20	113514010		螺钉SM15/64"x28 L=12		Screw SM15/64"x28 L=12		1	
21	101514001		螺钉SM1/4"x40		Screw SM1/4"x40		1	
22	10126011		送料曲柄销		Feed rocker crank pin		1	
	10104002		送料曲柄		Feed rocker shaft crank		1	
	11304010		送料曲柄(-7)		Feed rocker shaft crank(-7)		1	
24	101511005		螺钉SM9/64"x40 L=6		Screw SM9/64"x40 L=6		1	
25	101511016		螺钉SM3/16"x28 L=14		Screw SM3/16"x28 L=14		1	
26	101520005		抬牙连杆轴位螺钉 SM9/32"x28		Hinge Screw SM9/32"x28		1	
27	101511016		螺钉 SM3/16"x28 L=14		Screw SM3/16"x28 L=14		1	
28	400093		抬牙连杆		Connecting rod		1	
29	114022002		橡皮塞15.5		Rubber plug 15.5		2	
	400091		送料连杆		Rocker shaft connecting rod		1	
30	13805002		送料连杆(厚料)		Rocker shaft connecting rod(H)		1	
	400083		送料连杆(-7)		Rocker shaft connecting rod(-7)		1	
31	10126006		送料连杆销		Connecting rod pin		1	
32	101511005		螺钉SM9/64"x40 L=6		Screw SM9/64"x40 L=6		1	
33	101516003		抬牙连杆轴位螺母 SM9/32"x28		Hinge Screw SM9/32"x28		1	
34	10104004		抬牙后曲柄		Feed driving shaft crank		1	
35	14402007		抬牙轴		Feed driving shaft		1	
36	14022008		送料轴油线孔塞		Plug		2	
37	114022001		送料轴后轴套密封圈		Rubber ring		2	
38	14003002		送料轴后轴套		Axle sleeve		2	
39	1142200800		油封组件22		Oil seal		2	
40	10108003		送料轴挡圈		Feed rocker shaft snap ring		1	
41	101515002		螺钉SM1/4"x40 L=6		Screw SM1/4"x40 L=6		2	
42	10403015		轴套		Bushing		1	
43	H03001		GB/T894.1-1986挡圈 15		Snap ring 15		1	
	10104003		抬牙叉形曲柄		Driving shaft crank		1	
44	10804003		抬牙叉形曲柄(厚料)		Driving shaft crank(H)		1	
	10804003		抬牙叉形曲柄(-7)		Driving shaft crank(-7)		1	
45	1138NS30004		螺钉SM11/64"x40 L=10.5		Screw SM11/64"x40 L=10.5		1	
46	11380700300		牙架组件(鲍麦、-H)		Feed bar asm(Power Max & -H)		1	
	400672		牙架组件		Feed bar asm		1	
47	101511016		螺钉SM3/16"x28 L=14		Screw SM3/16"x28 L=14		1	
48	10128003		牙架座螺钉垫圈		Washer		1	
49	480095		牙架座		Feed bar bed.		1	
50	14022003		送料轴前孔塞		Spout plug		1	
51	10401007		牙架销(自制)		Feed bar pin		1	
52	101511025		螺钉SM11/64"x40 L=7		Screw SM11/64"x40 L=7		1	
	13814005		送料牙		Feed dog		1	
53	11314001		送料牙(厚料)		Feed dog (H)		1	
	11414001		送料牙(-7)		Feed dog (-7)		1	
54	101511018		螺钉 SM1/8"x44 L=6		Screw SM1/8"x44 L=6		2	
55	14402008		送料轴		Feed rocker shaft		1	
56	H03001		GB/T894.1-1986挡圈 15		Snap ring 15		1	
57	10403015		轴套		Bushing		1	
58	10403002		送料轴挡圈		Feed rocker shaft snap ring		1	
59	101515002		螺钉SM1/4"x40 L=6		Screw SM1/4"x40 L=6		2	



6. 切线部件/Thread Trimmer Components

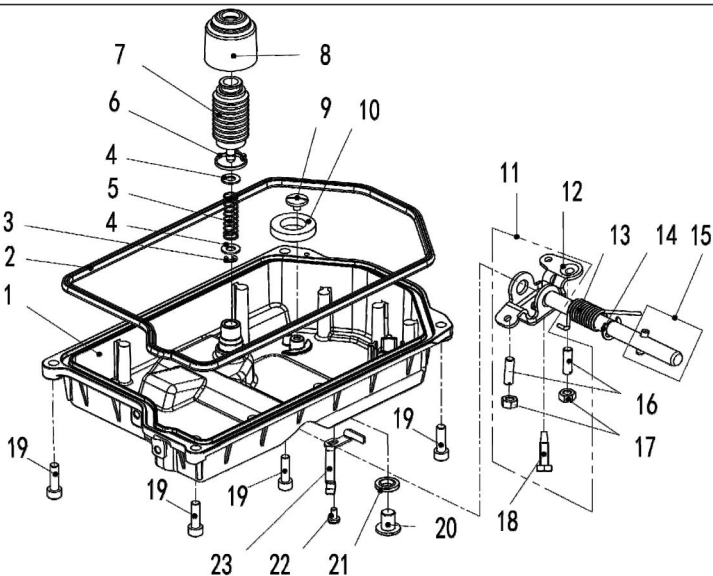
序号NO	公司件号	Part NO	名称	PartName	零件描述	Description	数量	Number
1	113S15002		螺钉SM1/8"x44 L=9.5		Screw SM1/8"x44 L=9.5		1	
2	115019001		定刀		Secant knife		1	
3	113S17001		螺钉SM9/64"x40		Screw SM9/64"x40		1	
4	11312003		护针片		Needle guard patch		1	
5	201S11009		螺钉SM9/64"x40 L=5.5		Screw SM9/64"x40 L=5.5		1	
6	113S11001		螺钉SM11/64"x40 L=12		Screw SM11/64"x40 L=12		2	
7	10128003		牙架座螺钉垫圈		Washer		2	
8	14012004		刀架压板组件		Knife bracket press component		1	
9	14012032		偏心连杆		Eccentric connecting rod		1	
10	11303012		短套		Short bushing		2	
11	113S17002		螺钉SM11/64"x40 L=4.4		Screw SM11/64"x40 L=4.4		2	
12	14019004		活动刀(薄料短槽)		Moterial knife		1	
13	114119002		活动刀(厚料短槽)		Moterial knife(H)		1	
14	11307001		剪线刀架		Knife bracket		1	
15	113S20001		连杆螺钉SM11/64"x40		Hinge Screw SM11/64"x40		2	
16	114112013		连杆		Connecting rod		1	
17	114S16004		螺母SM11/64"x40		Nut SM11/64"x40		1	
18	14004002		切线曲柄		Crank		1	
19	115022003		驱动曲柄止动块		Crank driver stopper block		1	
20	S05004		螺钉M5 L=14		Screw M5 L=14		1	
21	11327001		弹簧		Spring		1	
22	11230004		14孔接线器		Plug		1	
23	11303003		切线轴套		Thread cutting shaft bushing		1	
24	11503005		驱动曲柄轴衬套		Crank drive shaft bushing		1	
25	113S14020		螺钉SM11/64"x40 L=6		Screw SM11/64"x40 L=6		1	
26	11322002		扭簧端盖		Spring cover		1	
27	11327002		弹簧		Spring		1	
28	11304002		切线凸轮曲柄轴		Crank shaft		1	
29	101S14001		螺钉SM1/4"x40 L=6		Screw SM1/4"x40 L=6		1	
30	116S14005		螺钉SM1/4"x40 L=10		Screw SM1/4"x40 L=10		2	
31	11309030		凸轮顶柱		Push rod		2	
32	11310004		剪线凸轮		Cam		1	
33	11310011		剪线凸轮(厚料)		Cam(H)		1	
34	11324001		漆柱		Roolling pin		1	
35	1138NS16001		螺母SM11/64"x40		Nut SM11/64"x40		1	
36	1400400100		剪线驱动组件		Thread trimmer drive asm.		1	
37	14002004		切线驱动轴		Shaft		1	
38	H05013		GB/T896-1986挡圈6		Snap ring 6		1	
39	10112003		针杆曲柄护板		Cunter weight protecting		1	
40	11322003		电磁铁缓冲片		Solenoid cushion rubber		1	
41	11493000500		剪线电磁铁组件		Thread trimmer solenoid asm.		1	
42	113822005		电磁铁橡胶垫		Washer		1	
43	112S16006		螺母SM1/4"x40		Nut SM1/4"x40		1	
44	1401200200		切线电磁铁顶架组件		Bracket		1	
45	11309001		切线电磁铁顶销		Solenoid pin		1	
46	W02018		GB/T93-1987弹簧垫圈 4		Washer		2	
47	N01005		螺母 M4		Nut M4		2	
48	S17002		螺钉M6 L=10		Screw M6 L=10		2	
49	14127003		剪线复位簧		Spring		1	
50	14112022		切线杠杆		Tangent lever		1	
51	10112003		针杆曲柄护板		Needle bar crank protecting plate		1	
52	H03015		GB/T94.1 卡簧8		Ring 8		1	
53	11230004		12孔接线器		Plug		1	



7. 绕线部件/ Bobbin Components

序号NO	公司件号	Part NO	名称	PartName	零件描述	Description	数量	Number
1	1413104900		绕线器组件		Bobbin winder asm		1	
2	114511008		螺钉M4 L=6		Screw M4 L=6		1	
3	W02863		GB 93弹簧垫圈4		Washer 4		1	
4	W01142		GB/T 97.1平垫圈4		Washer 4		1	
5	14113002		压线控制板		Pressure line control board		1	
6	14112020		垫圈		Washer		1	
7	13812110		调节板		Regulating plate		1	
8	13827013		满线复位簧		Reset spring		1	
9	1411000300		绕线凸轮组件		Winding cam asm.		1	
10	11329020		开口挡圈5		Ring 5		2	
11	1141NS10001		复合槽盘头螺钉SM9/64°×40		Screw SM9/64°×40		1	
12	W02865		GB 93弹簧垫圈3		Washer 3		1	
13	14111004		绕线轮		Winding wheel		1	
14	O01110		O型圈25x7		O ring 25x7		1	
15	S04090		螺钉M2 L=4		Screw M2 L=4		1	
16	14119003		割线刀		Secant cutter		1	
17	14111002		绕线衬垫		Winding gasket		1	
18	113831002		绕线器装置主座		The main seat		1	
19	10127061		复位板拉簧		Drag spring		2	
20	14127060		弹簧		Spring		1	
21	14102003		绕线器主轴		principal axis		1	
22	1410510600		绕线器连杆组件		Bobbin connecting rod asm		1	
23	14111006		止动轮		Driven wheel		1	
24	N07008		螺母SM9/64°×40		Nut SM9/64°×40		1	
25	S09103		螺钉M4 L=4		Screw M4 L=4		2	
26	11422062		密封垫		Washer		1	
27	114511003		螺钉SM3/16°×28 L=10		Screw SM3/16°×28 L=10		3	
28	S10009		螺钉M6 L=8		Screw M6 L=8		2	
29	11435013		绕线器驱动轮		Driving wheel		1	
30	1411300600		底线夹线器		Bobbin thread tension asm.		1	
31	141S16019		小夹线器螺母		Thread tension nut		1	
32	11427006		小夹线弹簧		Spring		1	
33	14112015		夹线板		Thread tension disk		2	
34	11413022		夹线过线板		Thread tension guide plate		1	
35	112S13004		夹线螺钉		Screw		1	
36	114S16001		螺母SM11/64°×40		Nut SM11/64°×40		1	

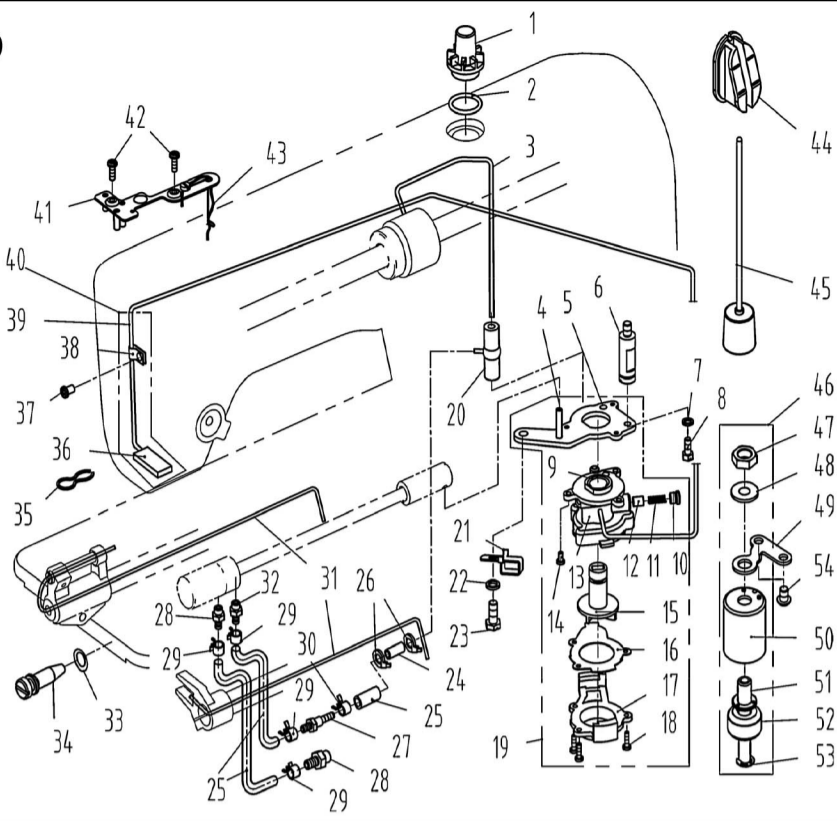
8



8. 油盘、膝抬压脚部件/Oil Reservoir & Knee Lifter Components

序号NO	公司件号	Part NO	名称	PartName	零件描述	Description	数量	Number
1	114101010		油盘		Oil reservoir		1	
2	14022001		油盘密封垫		Seal		1	
3	H05012		开口挡圈4(日标)		Snap ring 4		1	
4	40128013		垫圈 6.2×13×1		washer 6.2×13×1		2	
5	14327002		顶帽弹簧		Knee lifter push rod Spring		1	
6	11211005		自锁式尼龙扎带		Cable band		1	
7	114111012		顶帽组件		Knee lifter push rod		1	
8	114122009		顶帽防护帽		Knee lifter push rod hat		1	
9	101S11023		螺钉SM3/16°×28 L=6.5		Screw SM3/16°×28 L=6.5		1	
10	10131001		油盘磁铁		Oil reservoir magnet		1	
11	1401202700		抬压脚双向曲柄组件		Lifting foot bidirectional crank asm		1	
12	10112027		抬压脚双向曲柄		Knee lifter crank		1	
13	14027016		双向曲柄扭簧		Knee lifter spring		1	
14	H05010		挡圈9		Snap ring 9		1	
15	1400200100		抬压脚轴组件		Knee lifter shaft		1	
16	S07020		螺钉M6 L=20		Screw M6 L=20		2	
17	101S16004		螺母M6		Nut M6		2	
18	101S12002		螺钉M6 L=24.5		Screw M6 L=24.5		1	
19	S05240		螺钉M6 L=20		Screw M6 L=20		4	
20	20528014		油盘放油垫圈		Ring		1	
21	301S11015		螺钉SM3/8°×28 L=13		Screw SM3/8°×28 L=13		1	
22	113S11004		螺钉M4 L=8		Screw M4 L=8		1	
23	11411022		电线夹		Wire clamp		1	

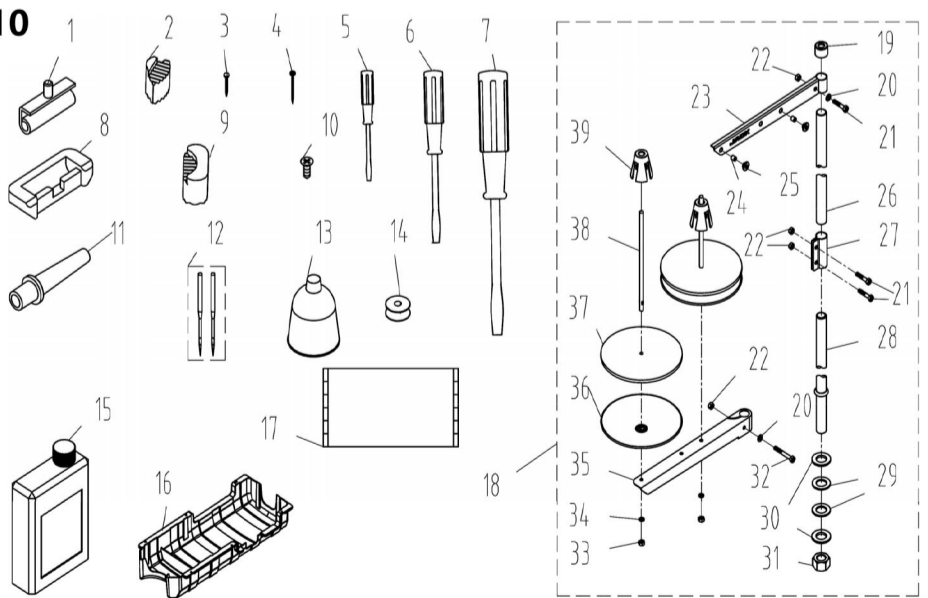
9



9. 润滑、油量检测部件/Oil Lubrication & Oil Measuring Components

序号NO	公司件号	Part NO	名称	PartName	零件描述	Description	数量	Number
1	11211004		油窗		Oil sight window		1	
2	10122019		油窗O形圈		Rubber ring		1	
3	14121001		上轴供油管		Main shaft oil tube		1	
4	10121001		下轴供油管		Hook driving shaft oil tube		1	
5	10112020		油泵安装板		Oil pump installing base		1	
6	101S30008		油泵连接螺柱		Oil pump connecting stud		1	
7	W03002		弹垫		Spring washer		1	
8	209S12001		螺钉SM11/64"×40 L=10.5		Screw SM11/64"×40 L=10.5		1	
9	10103022		油泵体衬套		Oil pump bushing		1	
10	101S30007		螺钉M7X0.75 L=5		Screw M7X0.75 L=5		1	
11	10127013		柱塞簧		Plunger spring		1	
12	10122018		回油柱塞		Plunger		1	
13	10120001		油泵体		Oil pump		1	
14	S04093		螺钉M3 L=6		Screw M3 L=6		3	
15	10111003		油泵叶轮		Oil pump impeller		1	
16	10112021		油泵叶轮托板		Oil pump impeller cover		1	
17	10111007		油泵盖		Lubricating oil pump cover		1	
18	101S30006		螺钉ST2.9 L=10		Screw ST2.9 L=10		3	
19	1012000100		油泵组件		Lubricating oil pump component		1	
20	10136001		供油管接头		Rubber joint		1	
21	14112007		过线勾		Thread hook		1	
22	W02004		GB/T93-1987弹垫M6		Spring Washer M6		1	
23	116S30003		螺钉SM15/64"×28 L=14.5		Screw SM15/64"×28 L=14.5		1	
24	14021003		铝油管		Aluminum tubing		1	
25	14021001		PVC油管		Tubing		0.48m	
26	113811004		尼龙扎带		Cable band		2	
27	14036004		油盘油嘴		Oil nozzle		1	
28	14036002		回油嘴		Oil nozzle		2	
29	20429001		油管卡簧		Oil pipe clamp spring		4	
30	30129007		油管卡簧		Oil pipe clamp spring		1	
31	10123010		油线		Oil wick		2	
32	14036003		供油嘴		Oil nozzle		1	
33	14022011		O型圈		Rubber ring		1	
34	140S30001		油量调节螺钉		Oil volume adjusting screw		1	
35	10127015		回油毡夹		Oil felt clamp		1	
36	10123006		回油毡		Oil felt felt		1	
37	101S11004		螺钉SM3/16"×28 L=7		Screw SM3/16"×28 L=7		1	
38	10112023		回油管夹		Oil tube clamp		1	
39	10121008		回油管		Oil return tube		1	
40	10121007		回油管组件		Oil return tube component		1	
41	10112025		油线固定板		Oil wick fixing plate		1	
42	101S11010		螺钉SM9/64"×40 L=11		Screw SM9/64"×40 L=11		2	
43	10123010		油线		Oil wick		1	
44	13811015		油窗		Oil window		1	
45	11412200200		油标组件		Buoy		1	
46	11493000700		油量检测装置组件		Oil measuring device		1	
47	140S16001		螺母		Nut		1	
48	14028001		弹性垫圈		Washer		1	
49	14012006		油量检测装置固定板		Pull spring fixing plate		1	
50	14011004		油量检测罩壳		Shell		1	
51	14002005		导向支柱		Guide pillar		1	
52	11493000700-02		浮子		Float		1	
53	H05040		开口挡圈6		Ring 6		1	
54	101S11026		螺钉SM15/64"×28 L=9		Screw SM15/64"×28 L=9		2	

10



10. 机头附件/Machine Head Accessories(1)

序号 NO	公司件号	Part NO	名称	PartName	零件描述	Description	数量	Number
1	1011203100		机头连接钩部件		Hinge component		2	
2	14022022		机头座垫		Die cushion		2	
3	101S30010		机头连接钩座钉P19		Nail P19		2	
4	1411150001		机头连接钩座钉P15		Nail P15		2	
5	10131004		螺丝刀(小)		Screw driver,small		1	

10. 机头附件/Machine Head Accessories(2)

序号 NO	公司件号	Part NO	名称	PartName	零件描述	Description	数量	Number
6	10131003		螺丝刀 (中)		Screw driver,medium		1	
7	20731047		螺丝刀 (大)		Screw driver,large		1	
8	10122060		机头连接钩座		Head connecting rubber cushion		2	
9	14022023		机头支架		Nose support		2	
10	101530014		螺钉M4 L=20		Wood screw M4 L=20		6	
11	115011003		机头支柱		Machine head rest pin		1	
12	13817001		机针 (定位14#)		Needle		4	
	10117002		机针DP×5#21 (厚料)		Needle(H)		4	
13	20131039		漏斗		Funnel		1	
14	10118003		梭心		Bobbin		2	
15	1381101200		油壶组件		Oiler component		1	
16	115011005		油盘托盘		Disk tray		1	
17	114131001		防尘罩		Dust cover		1	
18	1383100300		线架组件		Thread stand asm.		1	
19	20131019		线架杆顶防护橡皮		Spool rest rod rubber cap		1	
20	W01047		平垫圈5		Washer 5		2	
21	S04050		螺栓M5 L=16		Screw M5 L=16		1	
22	N01034		螺母M5		Nut M5		4	
23	13831022		上线架过线杆		Spool rest arm upper		1	
24	10113011		过线圈 (内)		Thread guide ring		2	
25	10113010		过线圈 (外)		Thread guide ring		2	
26	13831019		线架杆上节		Spool rest rod upper		1	
27	13831021		线架杆接头		Spool rest rod joint		1	
28	13831020		线架杆下节		Spool rest rod lower		1	
29	10122106		橡胶垫圈		Spool rest rod rubber ring		2	
30	W01052		平垫圈16		Washer 16		2	
31	N02004		螺母M16×1.5		Nut M16×1.5		1	
32	S04051		螺栓M5 L=31.5		Screw M5 L=31.5		1	
33	N01034		螺母M5		Nut M5		2	
34	W03002		弹簧垫圈 5		Spring washer 5		2	
35	13831023		下线架过线杆		Spool rest arm lower		1	
36	13831024		线盘		Spool rest		2	
37	20131010		线盘垫		Spool rest cushion		2	
38	20131006		线托棒		Spool pin		2	
39	13831025		线团防松垫		Spool retainer		2	

公司地址(Address of Company) :

中国浙江省台州市椒江区三甲东海大道东段1008号

NO.1008, DONGHAI AVENUE EAST, JIAOJIANG DISTRICT,TAIZHOU CITY, ZHEJIANG

邮编(Zip Code) : 318000

国内销售部(Domestic Trade Department):

电话(TEL): 0086-0576-88177788 88177789

传真(FAX): 0086-0576-88177758

国贸部(International Trade Department):

电话(TEL): 0086-0576-88177782 88177774

传真(FAX): 0086-0576-88177787

服务热线: 400-8876858

http://www.chinajack.com

资料如有更改, 恕不另行通知, 以实物为准。

You will be not informed if the file has been revised.Please set sample as standard.

日期: 2020.12



请您扫下杰克服务号

www.chinajack.com