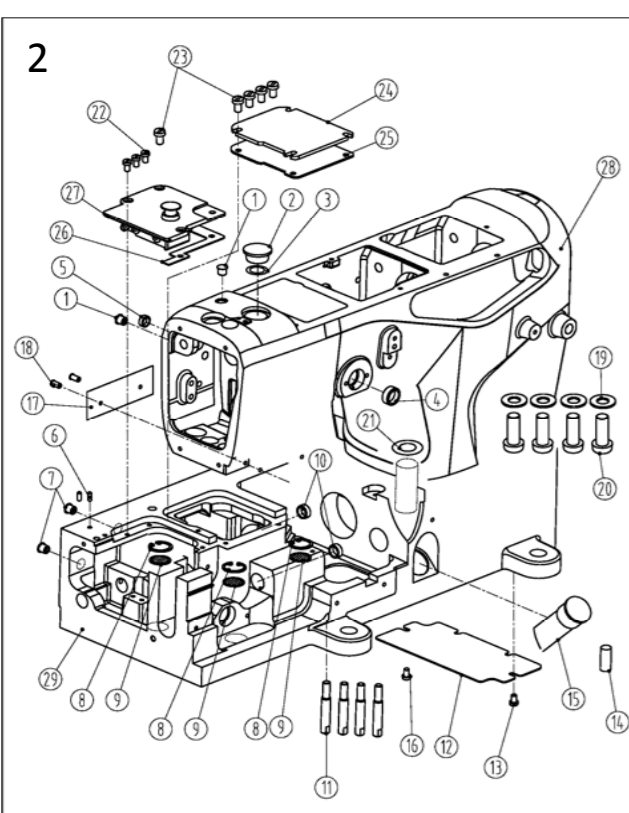
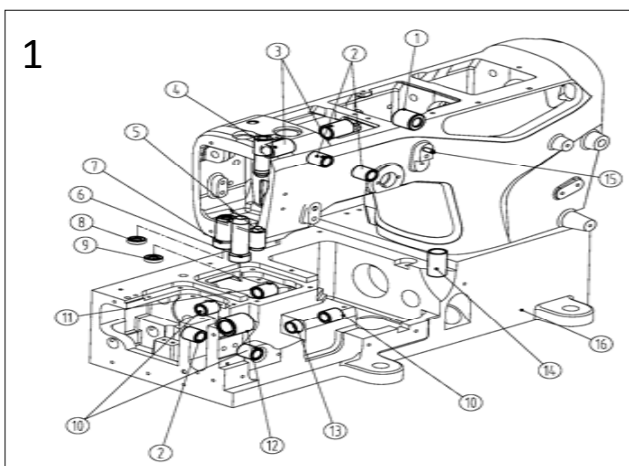


# JACK 杰克

快速服务 100%

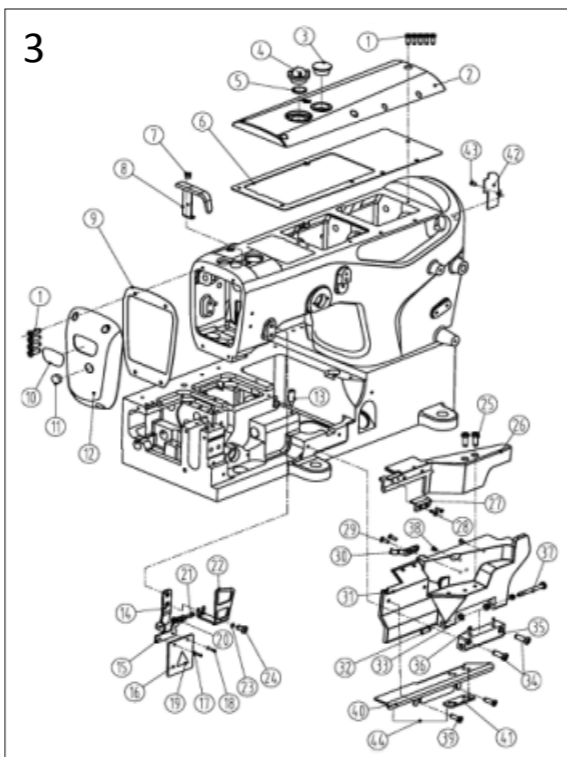
## W4-D零件手册

W4-D Parts Manual



### 一、套筒部件(Bushing assemblies)

序号Ref. No	公司件号 Part No	参考件号 Ref. Part. no	名称	Description	数量 Number
1	31003002		拍压轴套筒	sleeve	1
2	30103106	210297	过线座轴套筒	sleeve	2
3	20103047	250141	送布轴套	sleeve	2
4	30203004	250146	针杆上套	sleeve	1
5	30203005	251003	针杆下套	sleeve	1
6	30203024	250147	压脚轴套	sleeve	1
7	30203025	250136	喂针轴套	sleeve	1
8	20622019		油封	plug	1
9	30122039		油封	plug	1
10	30103105		前弯针轴后套筒	bushing	3
11	30103021	250135	弯针轴前后套筒	plug	1
12	30103010		主轴套筒	bushing	1
13	30103019		护针轴前套筒	bushing	1
14	30221016	255020	铜油管	pipe	1
15	P03005		销 4×8	pin	1
16	100906	250215-2	机壳	machine frame	1

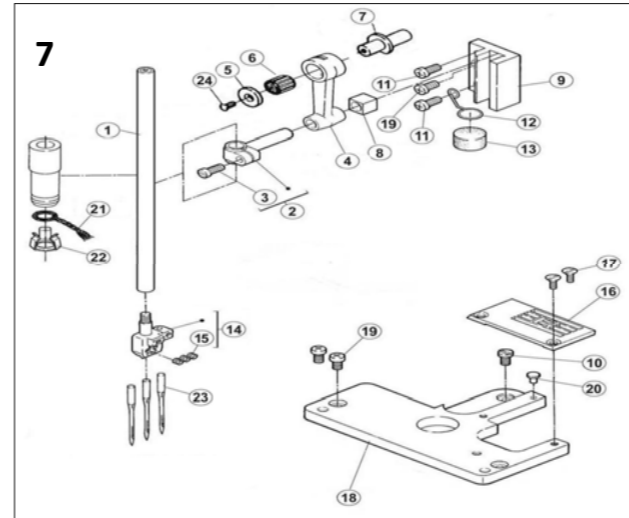
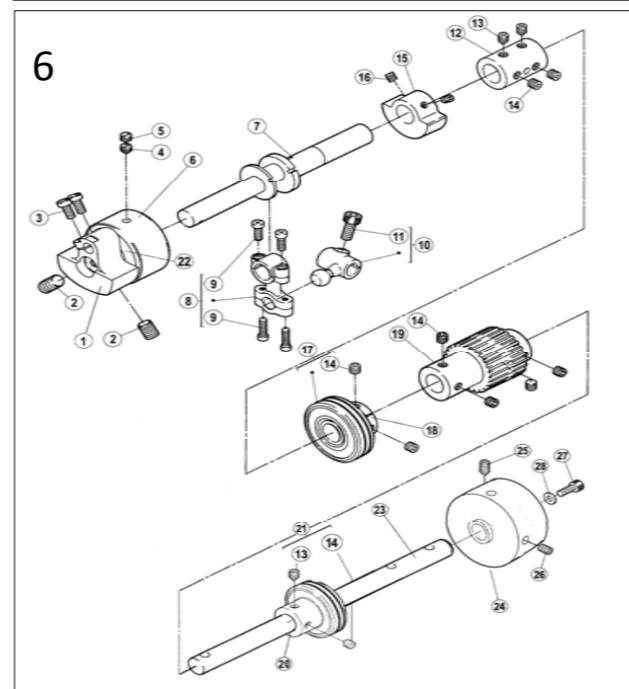
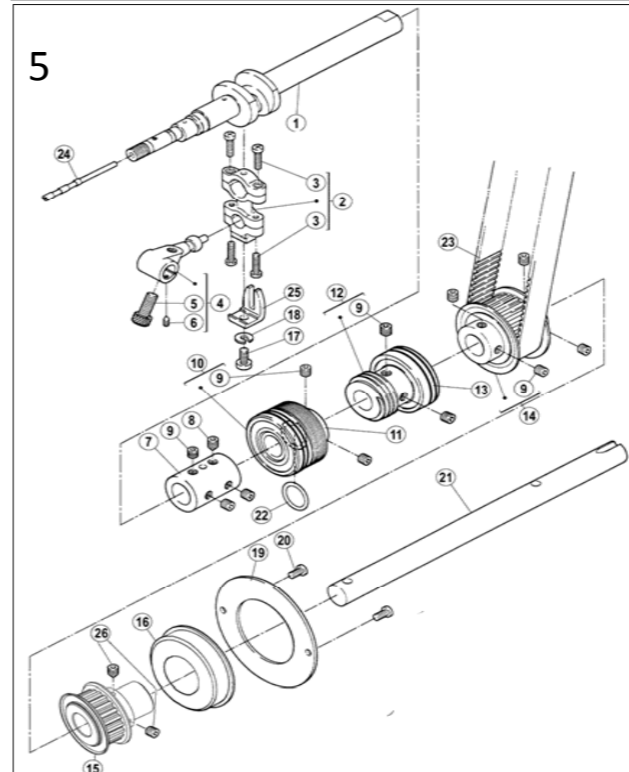
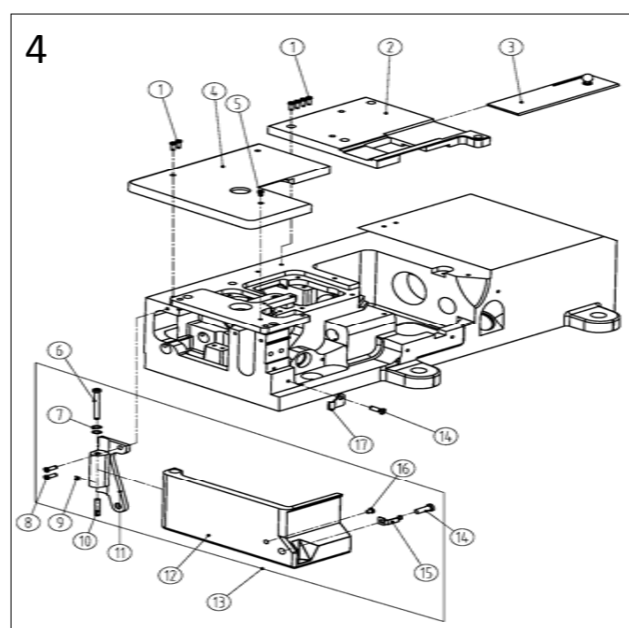


### 三、罩壳部件(Cover assemblies)

序号Ref. No	公司件号 Part No	参考件号 Ref. Part. no	名称	Description	数量 Number
1	s04060	7021	螺钉M4×10	screw	9
2	303600		上盖(喷漆)	arm cover(top)	1
3	30122005		油封	plug	1
4	20711055		油窗	Oil Sight Window	1
5	21022003		油窗垫	o ring	1
6	31022010		上盖密封垫	The head gasket	1
7	207S11007		螺钉	screw	2
8	31112010		针杆护罩	needle bar cover	1
9	31022006		机头左盖密封垫	o ring	1
10	13837002		商标牌	plug	1
11	10122003		油封	plug	1
12	303599		机头左盖(喷漆)	arm cover(rear)	1
13	301S30002	7089	左侧盖螺钉	screw	1
14	31012042		玻璃罩安装板	glass plate	1
15	31012029		护罩架	shield	1
16	30111003	250257	有机玻璃罩	eye guard	1
17	W01002	202875	垫圈	sticker	2
18	s01006	7009	螺钉M3×4.5	screw	2
19	20131063		护罩警示牌	sticker	1
20	W03001	210307	波形垫圈	washer	2
21	301S20001		螺钉	screw	1
22	31012012		过线护罩	threan takeup cover	1
23	W02004	303335	垫圈6	sticker	1
24	s01060	7052	护罩螺钉	screw	8
25	s01011		螺钉M5×10	screw	2
26	31101005		前罩缝台盖	front cover	1
27	30209018		针板座接块	block	1
28	s01006	7009	螺钉M3×4.5	screw	2
29	s01002	7017	螺钉M4×6.5	screw	2
30	30127001	250051	前罩簧	flat spring	1
31	31101006		前罩缝台	arm cover	1
32	301s20003	250014	前罩缝台螺钉	pin	1
33	30128002	201191	弹簧垫圈	spring	3
34	s01007	7023	螺钉M4×13.5	screw	2
35	30101063		前罩缝台座	bracket	1
36	s10006	4539	螺钉M5×6	screw	2
37	301s20002	250013	前罩缝台座螺钉	screw	1
38	30122015		前罩防震垫	cushion	2
39	s01065	7079	螺钉M5×6	screw	2
40	30112097		加宽前门板接板	block	1
41	30112098		加宽前门板接板垫块	baseplate	1

### 二、车壳部件(Frame assemblies)

序号Ref. No	公司件号 Part No	参考件号 Ref. Part. no	名称	Description	数量 Number
1	30122006	240052	油封	plug	2
2	21022007	206590	油封	plug	1
3	21012018		油封垫	washer	1
4	20622019		油封	plug	1
5	30122008		油封	plug	1
6	P01001		销A5×13	pin	2
7	30122006	240052	油堵	plug	4
8	H01001	240001	挡圈	ring	3
9	30112001	255002	滤油网	filter	3
10	30122008	208173	油封	plug	2
11	301s30001	250117	机壳螺钉	shoulder pin	4
12	30112002	250049	盖板	cover	1
13	s01002	7017	螺钉M4×6.5	screw	1
14	10126021		拼装销	pin	2
15	30111001	206590	油标	oil level gauge	1
16	s01002	7017	螺钉M4×6.5	screw	1
17	30137001	250233	机型号	sticker	1
18	R03001	210679	铆钉 2.5×4	pin	2
19	W02003		垫圈 10	washer	4
20	S05001		螺钉 M10×27.5	screw	4
21	001001		O型圈 15×2.65	o ring	1
22	301s11024		滑块导座螺钉	screw	3
23	L02001	7084	螺钉 M4×8	screw	5
24	30101005	250003	下节右盖	top cover (right)	1
25	30122003	250004	下节右盖垫	gasket	1
26	30122002	250020	下节左盖垫	gasket	1
27	30101004	250069	下节左盖	top cover plate (left)	1
28	100905		机壳上节	chassis	1
29	100906		机壳下节	casing under section	1
42	31122003		卡线片	card line piece	1
43	s01002		螺钉	screw	1
44	302525		加宽前门板接板组件	front coverasy	1



18	30109006	251007	针板座	bracket	1
19	S01004	7019	螺钉 M4×7.8	screw	3
20	30122018	240123	防震垫	cushion rubber	1
21	30123014	202176	油线	oil wick	1
22	30112009	206524	油线托	oil wick retainer	1
23	30117001		机针	needle	3
24	S02007		螺钉M3×5	screw	1

### 四、缝台部件(Cloth plate assemblies)

序号 Ref. No	公司件号 Part No	参考件号 Ref. Part. no	名称	Description	数量 Number
1	s01003	7021	螺钉 M4×12	screw	6
2	300137	250074-ASD	右缝台盖(喷漆)	bed cover(right)	1
3	30115001	250071-91	推板	cover	1
4	300139	250052-BSD	左缝台盖(喷漆)	bed cover(left)	1
5	s02001	7043	螺钉 M4×6	screw	1
6	301s20004		侧盖合扇螺钉	screw	1
7	30128002	201191	弹簧垫圈	spring	2
8	s01005	7020	螺钉 M4×10	screw	4
9	s10001		螺钉M3×4	screw	2
10	301s20005		销螺钉	pin	1
11	30101112		侧盖合扇	cover	1
12	30101111		侧盖	side cover	1
13	300952		侧盖组件(喷漆)	side coverassy	1
14	s01002	7017	螺钉M4×6.5	screw	1
15	30127030		侧前锁簧	flat spring	1
16	30122015		前罩防震垫cushion	cushion	1
17	30112095		侧前锁簧舌	flat spring	1

### 五、下轴部件(Hook shaft assemblies)

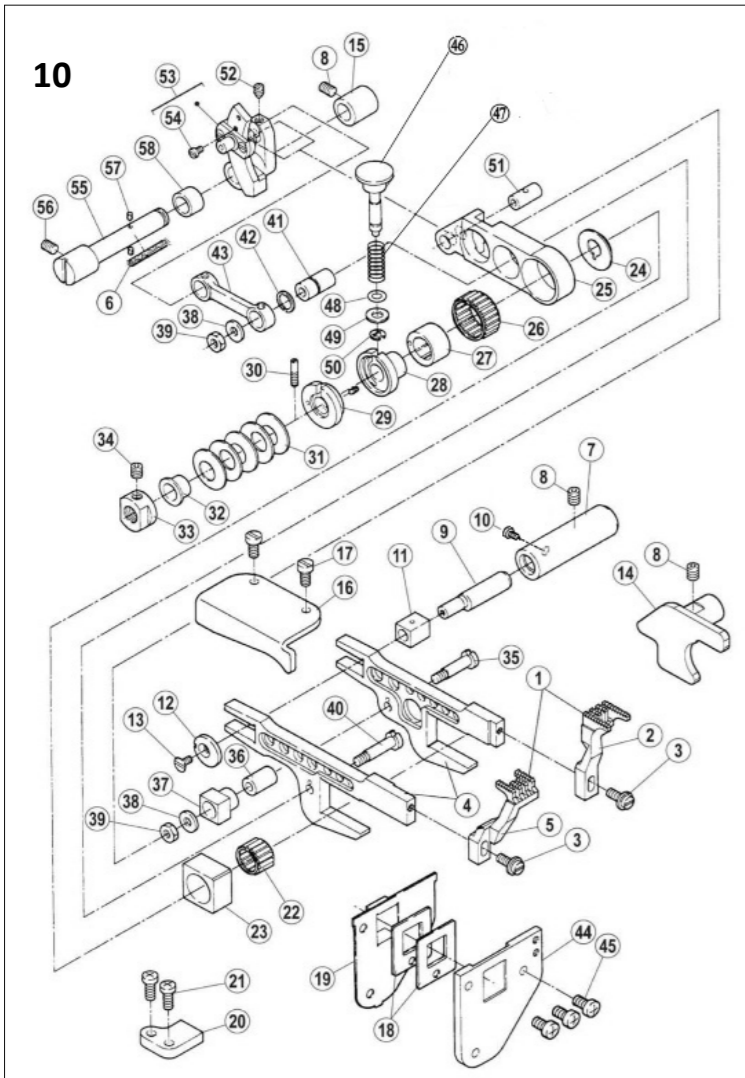
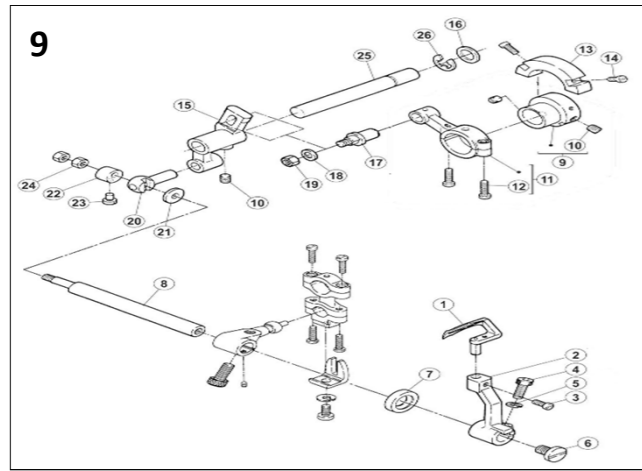
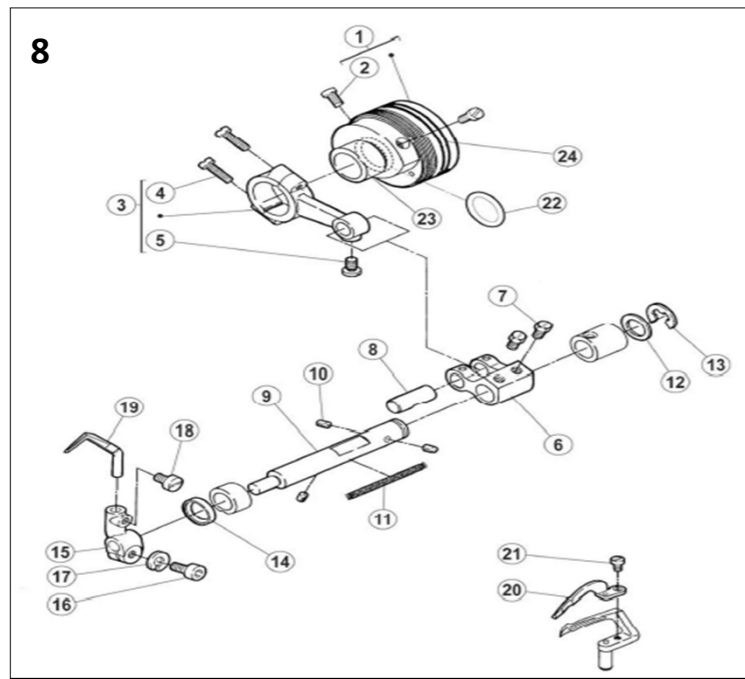
序号 Ref. No	公司件号 Part No	参考件号 Ref. Part. no	名称	Description	数量 Number
1	400068	250501B-91	下轴	crankshaft assy	1
2	400060	2505009-92	连杆组件	connection assy	1
3	201S20015	7015	螺钉 M3.5×13	screw	4
4	30104002	252008	下轴曲柄	crank	1
5	S05002	4534	螺钉 M6×0.75×	screw	1
6	S12002	4545	螺钉 M3×4	screw	1
7	30103004	250506	接轴套	joint	1
8	S12003	4555	螺钉 M6×7	screw	1
9	S10029	4547	螺钉 M6×0.75×5	screw	11
10	3012400300	250508-91	油封轴承	bearing	1
11	30103006	250508	中轴套	bushing	1
12	30103008	250543	蜗杆	bushing	1
13	3012400400		油封轴承	bearing	1
14	30125006	250511-1	下轴同步带轮	gear(lower)	1
15	30125005	250530	小同步带轮2	small gear2	1
16	B01003	250504-91	轴承 6304Z	bearing	1
17	301S11004	4019	比叉螺钉	screw	1
18	W02001	202286	M5 弹垫	washer	1
19	30108001	250514	轴承挡圈	cover	1
20	S01004	7019	螺钉 M4×7.8	screw	2
21	30102066	250507	下后轴	shaft	1
22	001001	206837	O型圈 15×2.65	o ring	1
23	30135002	206050C	同步带	timing belt	1
24	30126001	250525	调节销	adjusting bar	1
25	30109001	201074	比叉	guide	1

### 六、上轴部件(Main shaft assemblies)

序号 Ref. No	公司件号 Part No	参考件号 Ref. Part. no	名称	Description	数量 Number
1	400307	250526B92	针杆曲柄	motion assy	1
2	S10004	4592	螺钉 M8×1×12	screw	1
3	S01011	7028	螺钉 M5×10	screw	2
5	S11001	7152	螺钉 M6×0.75×6	screw	1
6	30103015	250526	轴承套	bushing	1
7	400065	250517A	上前轴	crankshaft	1
8	400061	253500-92	连杆组件	connection assy	1
9	201S20015	7021	铜连杆螺丝	screw	4
10	30104006	253501A	弯针曲柄	crank assy	1
11	S05002	4534	螺钉 M6×0.75×	screw	1
12	30103004	250506	接轴套	joint	1
13	S12003	4555	螺钉 M6×0.75×7	screw	3
14	S10029	4547	螺钉 M6×0.75×5	screw	9
15	30109003	250524	上轴平衡块	balance weight	1
16	S10002	4514	螺钉 M5×5	screw	2
17	3012400400	250529-91	油封轴承	bushing	1
18	30103012	250529	轴承套	bushing	1
19	30125002	250521	上轴同步带轮	gear(upper)	1
20	30103014	250528	轴承套	bushing	1
21	3012400400	250529-91	油封轴承	bearing	1
22	B01005		轴承 6203	bearing	2
23	30202004		后轴	shaft	1
24	31035002		手轮	pulley	1
25	S12001	4556	尖端固定螺钉 M6×8	screw	1
26	S10009	4541	螺钉 M6×8	screw	1
27	S05004	4501	螺钉 M5×14	screw	1
28	W01004	204585	M5普通垫片	washer	1

### 七、针杆部件(Needle bar assemblies)

序号 Ref. No	公司件号 Part No	参考件号 Ref. Part. no	名称	Description	数量 Number
1	30102008	251000-91	针杆	needle bar	1
2	30102009	206061	针杆针头	needle bar pin	1
3	301S11005	5325	针杆针头螺钉	screw	1
4	30105005	206052	针杆连杆	link/needle bar	1
5	30128030	205097	偏心轴垫	washer	1
6	B07001	240098	轴承 8×12×12	needle bearing	1
7	30102050	251010A	连杆偏心轴	eccentric pin	1
8	30109004	206063	针杆滑块	block	1
9	30109005	206062	滑块导座	guide block/needle	1
10	301S11024	7082	滑块导座螺钉	screw	1
11	S01003	7021	螺钉 M4×12	screw	2
12	30127003	251009	毛毡弹簧	spring	1
13	30123002	179040-05	毛毡	felt	1
14	30134001	25718-56	356针舌	needle holder	1
15	S10026	4554	螺钉 M3×3	screw	3
16	30115002		356针板	needle plate	1
17	301S17001	5373-HC	针板螺钉	screw	2



序号 Ref. No	公司件号 Part No	参考件号 Ref. Part. no	名称	Description	数量 Number
41	30103028	206566	差动连杆套	bushing	1
42	30129001	206565	开口挡圈	ring	1
43	30105010	206564	连杆送布连杆	link/differential feed	1
44	30109015	251520	牙架挡板	bracket	1
45	S01004	7019	螺钉 M4×7.8	screw	3
46	30102017	252526	针距调节按钮	pin	1
47	30127004	240122	针距调节簧	spring	1
48	001004	206366	O型圈 4×1.8	o ring	1
49	30128032	204585	挡圈	washer	1
50	H05002	200555	挡圈 5	ring	1
51	30103029	206569	差动送布架套	pin	1
52	S12005	4546	螺钉 M4×4	screw	1
53	3010401500	252527-91	差动调整架组件	crank	1
54	S01012	7031	螺钉 M2.5×4	screw	1
55	30102018	252510	差动轴	shaft	1
56	S10002	4514	螺钉 M5×5	screw	1
57	30123008	207925	喂针抽油孔毛毡	felt	2
58	30103030	240119	差动轴前套筒	spacer	1
59	30126016		针距调节按钮	pin	1
60	30127026		针距调节簧	spring	1

### 八、护针部件(Needle guard assemblies)

序号 Ref. No	公司件号 Part No	参考件号 Ref. Part. no	名称	Description	数量 Number
1	B01001		轴承 6004Z	bearing	1
2	S10028	4539	螺钉 M5×6	screw	2
3	400062	255501-92	连杆组件	connection assy	1
4	S01039	7015	螺钉 M4×15	screw	2
5	301S11024	7082	滑块座座螺钉	screw	1
6	30104007	306093	弯针曲柄	crank	1
7	301S12001	5084	曲柄螺钉	screw	2
8	30126003	205495	曲柄销	pin	1
9	30102011	251518	护针轴	shaft	1
10	30123001	206748	毛毡	felt	3
11	30123014	202176	油线	oil wick	1
12	30128008	240102	护针轴垫圈	washer	1
13	H05001	205061	挡圈 10	ring	1
14	30122019	204052A	油封	oil seal	1
15	30104009	251519	护针挡架	lever assy	1
16	S05003	4500	螺钉 M5×10	screw	1
17	H02001	303067	M5 弹垫	washer	1
18	S01002	7017	螺钉 M4×6.5	screw	1
19	30117002	257551B	后护针挡	needle guard (rear)	1
20	30117003	257553	前护针挡	needle guard (front)	1
21	S01012	7031	螺钉 M2.5×4	screw	1
22	001001		O型圈 15×2.65	oring	1
23	30110002	251517	偏心凸轮	eccentric	1
24	30122017		油承槽油封	oil seal	2

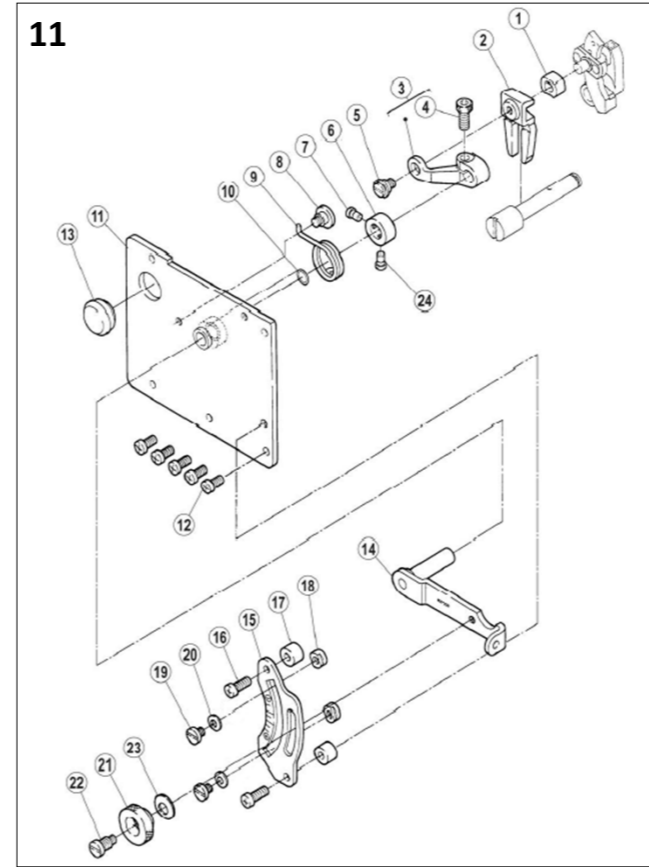
### 九、弯针部件(Looper assemblies)

序号 Ref. No	公司件号 Part No	参考件号 Ref. Part. no	名称	Description	数量 Number
1	3011700900	257550-91	弯针组	looper	1
2	30104012	252007	弯针架	looper holder assy	1
3	S01004	7019	螺钉 M4×7.8	screw	1
4	S05004	4501	螺钉 M5×14	screw	1
5	W02001	303067	M5 弹垫	spring washer	1
6	S01014	7085	螺钉 M6×0.75×9.6	screw	1
7	20622019		油封	oil seal	1
8	30102014	252006	弯针架轴	shaft	1
9	30110005	252000	摆架偏心轮	eccentric assy	1
10	S10006	4539	螺钉 M5×6	screw	3
11	400063	252001-92	连杆组件	connection assy	1
12	S01039	7015	螺钉 M4×15	screw	2
13	30109007	252010	平衡块	balance weight	1
14	S01009	7011	螺钉 M3×7.5	screw	2
15	30104010	252002	弯针摆架	crank	1
16	30128008	240102	摆架轴垫圈	washer	1
17	30102013	179399-05	连杆轴	pin	1
18	30128032	240062	垫片	washer	1
19	N01004	4805	螺母 M5	nut	1
20	30102015	252003	摆轴轧头	block pin	1
21	30128010	208028	垫圈	washer	1
22	30108002	208029	偏心挡圈	collar	1
23	301S12001	5084	曲柄螺钉	screw	1
24	N01001	4802	螺母 M4	nut	2
25	30102012	252004	摆架轴	shaft	1
26	H05001	205061	挡圈 10	ring	1

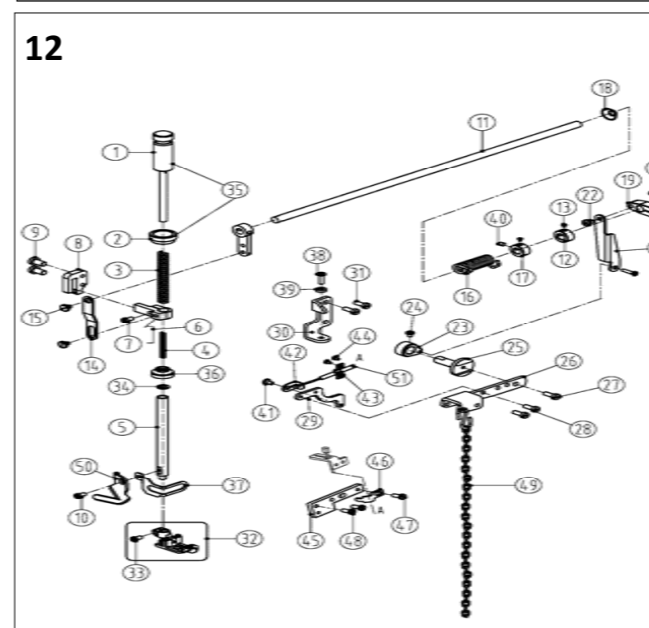
### 十、牙架部件(Feed dog holder assemblies)

序号 Ref. No	公司件号 Part No	参考件号 Ref. Part. no	名称	Description	数量 Number
1	3011400700	257259-16F	差动送布牙组件	main feed dog assembly	1
2	30114001	356、364送布牙	main feed dog	main feed dog	1
3	301S30003	5590	差动送布牙螺钉	screw	2
4	400066	252500-91	差动送布牙架组件	main feed bar assembly	1
5	30114002	356、364差动牙	differential feed dog	differential feed dog	1
6	20123021	202175	油线	oil wick	1
7	30103022	204129A	套筒	bushing	1
8	S10006	4539	螺钉 M5×6	screw	3
9	30102016	204128A	偏心轴	eccentric pin	1
10	301S12001	5084	曲柄螺钉	screw	1
11	30109008	205857	滑块	block/feed bar guide	1
12	30128011	204439A	偏心垫	washer	1
13	301S17002	5317	偏心轴螺钉	screw	1
14	30109009	252504	牙架挡板	guide(right)	1
15	30103031	206571	差动轴后套筒	bushing	1
16	30109010	252507	左挡板	guide(left)	1
17	L02003	7019	螺栓 M4×7	screw	2
18	30122020	206133	牙架油封	oilshield	2
19	30109011	252509	油封挡板	cover	1
20	30109012	252508	挡板	guide(lower)	1
21	S01005	7020	螺钉 M4×10	screw	2
22	B07002	206128	轴承 12×15×10	needle bearing	1
23	30109013	252519	抬牙架块	block	1
24	30108003	252520	轴承挡圈	washer	1
25	30104013	206562	差动送布架	link/main feed	1
26	B07003	206125	轴承 17×21×10	needle bearing	1
27	30103023	252521	偏心轴承套	eccentric	1
28	30103024	252522	送布调节器	regulator	1
29	3010306500	252523-91	调节器套组	eccentric retainer	1
30	301S30004	252516	调节器螺钉	screw	1
31	30128012	240125	碟形垫圈	spring	5
32	30103026	252525	垫圈套	spacer	1
33	301S16001	252543	调节螺母	nut	1
34	S10002	4514	螺钉 M5×5	screw	1
35	301S30005	206120	牙架螺钉	screw	1
36	30103027	206119	差动牙架套	bushing	1
37	30109014	206563	送布滑块	guide block	1
38	30128013	200098	垫片	washer	2
39	201S16003		N03 螺母	nut	2
40	301S30006	206123	差动牙架螺钉	screw	1

### 11



### 12



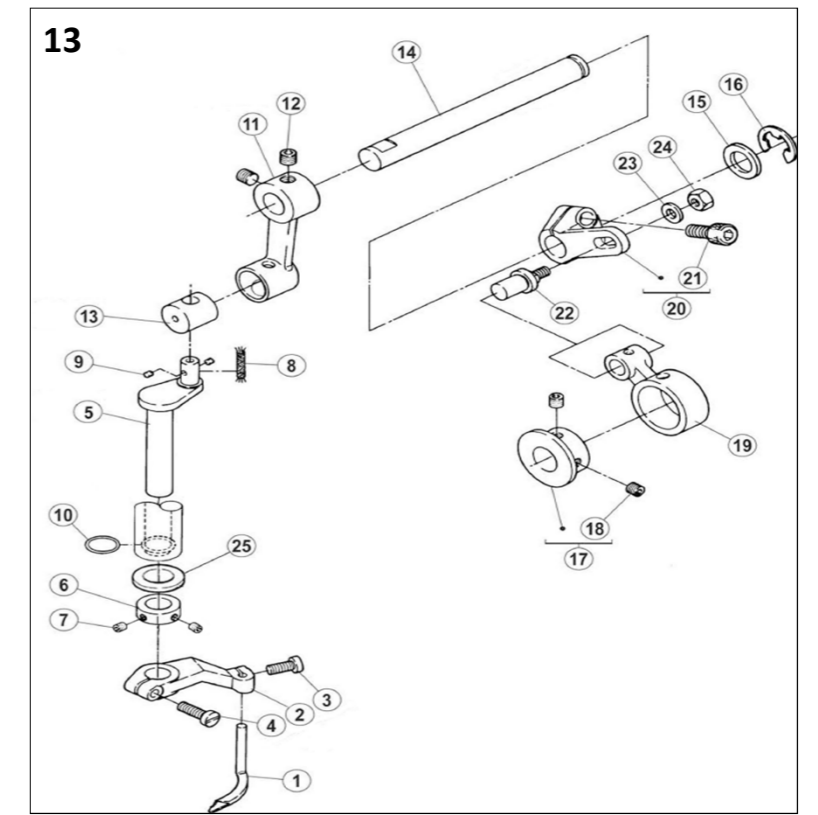
### 十二、压脚部件(Presser form assemblies)

序号 Ref. No	公司件号 Part No	参考件号 Ref. Part. no	名称	Description	数量 Number
1	310S30002	253000-91	调压螺杆	adjusting bar	1
2	301S16005	253003	调压母	nut	1
3	30227008	240252	调压簧	spring	1
4	30227009	240253	压脚轴小弹簧	spring	1
5	30202017	253026	压脚步轴	presser bar	1
6	30104017	206139	压脚轧头	presser bar clamp	1
7	301S11009		螺钉 M4×12	screw	1
8	3010901700	253005-91	导块销轴组件	guide	1
9	S11025	7025	螺钉 M4×20	screw	2
10	S01006	7009	螺钉 M3×4.5	screw	1
11	3010206400	263008-91	抬压轴	lever	1
12	30108006	192024	挡圈	collar	1
13	301S12001	5084	曲柄螺钉	screw	3
14	30112016	206157	压脚轧头连接板	link	1
15	301S20007	5386	螺钉	screw	2
16	30127009	253010	抬压轴簧	spring	1
17	30108005	206156	挡圈	collar	1
18	30122023		油封	plug	1
19	30104019	206149	抬压曲柄轴	bell crank(upper)	1
20	301S11011	5187	抬压曲柄螺钉	screw	1
21	30212018	253027	抬压曲柄连接板	link	1
22	301S20008	5184	连接板螺钉	screw	2
23	30104020	206148	抬压曲柄轴	bell crank(lower)	1
24	301S20013	002022-4	抬压曲柄轴固定螺钉	screw	1
25	31002006		抬压轴	shaft	1
26	30110260		抬压扳手	lever	1
27	S01011		螺钉	screw	1
28	S01004		螺钉	screw	2
29	31012603		连接板	link	1
30	31012061		限位板	link	1
31	S01004		螺钉	screw	2
32	3011601300	257461-56	356压脚	presser foot assy	1
33	3011601400		364压脚	presser foot assy	1
34	301S11010	001170-3	压脚固定螺钉	screw	1
35	O01006	240095	O型圈 8.5×1.8	o ring	1
36	3100201000		K4-1125调压螺杆组件	adjusting bar assembly	1
37	30122023		密封胶圈	oil guard	1
38	30112017	253028	压脚护罩	finger guard	1
39	S01016	4549	螺钉 M5×17	screw	1
40	N01004	4805	螺母 M5	screw	1
41	S12003		螺钉 M6×0.75×7	screw	1
42	301S20007	5386	螺钉	screw	2
43	31012072		拉板	pulling plate	1
44	31012032		压板	clamp	1

### 十一、差动部件(Differential assemblies)

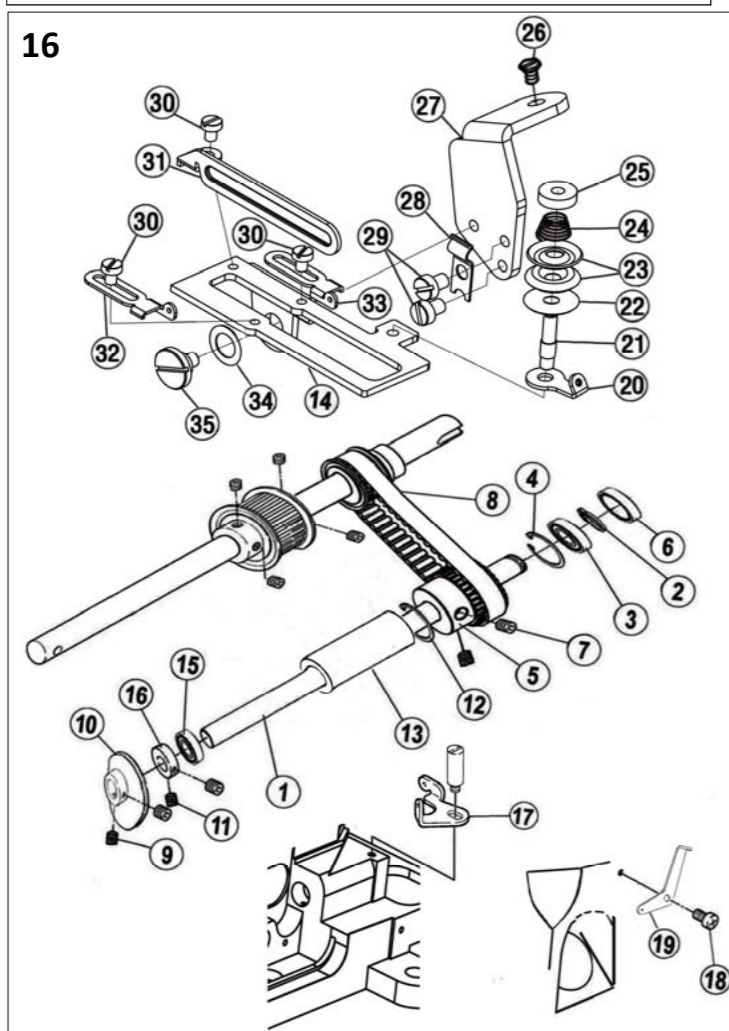
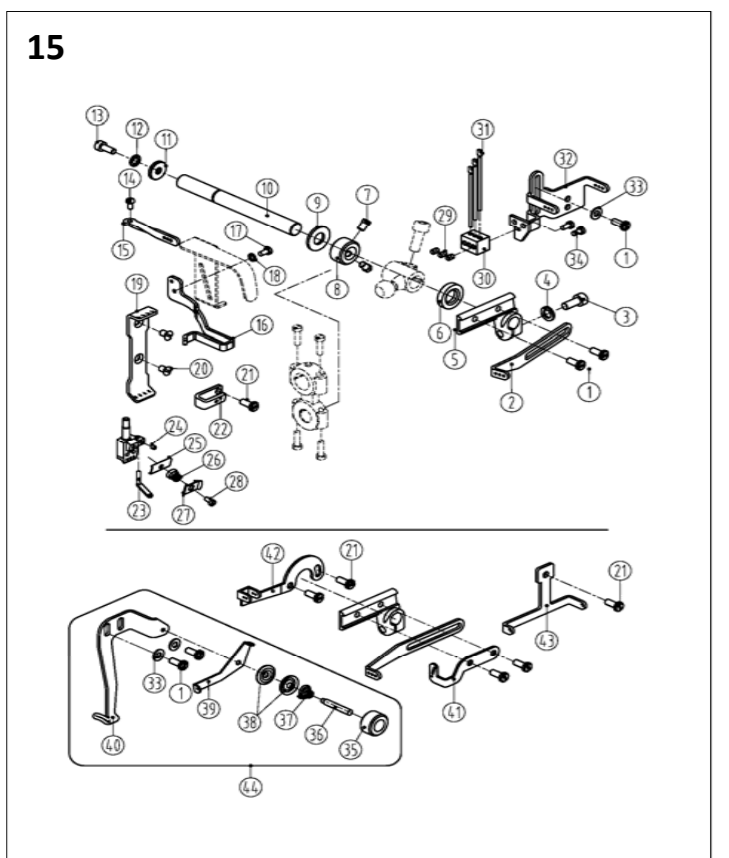
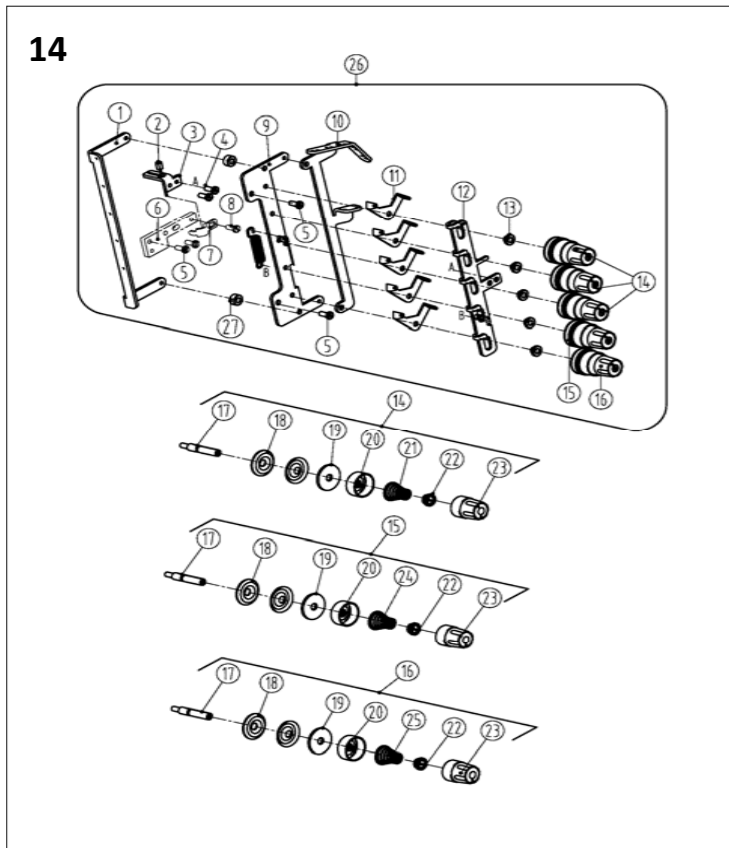
序号 Ref. No	公司件号 Part No	参考件号 Ref. Part. no	名称	Description	数量 Number
1	30103032	252531	方套	block	1
2	30109016	252532	比叉	guide/block	1
3	30105012	252533	连杆	lever	1
4	S05005	4531	螺钉 M5×12	screw	1
5	301S20006	5316	连杆连接螺钉	screw	1
6	30108004	240271	挡圈	ring	1
7	301S11007	35827	挡圈螺钉	screw	1
8	301S20001	7066	护罩座固定螺钉	screw	1
9	30127005	252536	弹簧	spring	1
10	001005	240129	O型圈 7.5×1.8	o ring	1
11	3011201100	252539A91	左板组件	bracket	1
12	S01004	7019	螺钉 M4×7.8	screw	5
13	30122021	240162	油封堵	plug	1
14	3011201300	252664-91	调节扳手组件	lever assy	1
15	30112015	252538	调节板	scale plate	1
16	S01003	7021	螺钉 M4×12	screw	2
17	30203019	240124	调节套	spacer	2
18	20109005	210171	调节滑块	stopper	2
19	301S11008	2905	螺钉	screw	2
20	W01006	201185	垫圈 4	washer	2
21	301S16004	210167	螺母	nut	1
22	301S30007	5486	调节扳手螺钉	screw	1
23	30128014	211301	垫圈	washer	1
24	301S11023		挡圈螺钉(短)	screw	1

### 13



### 十三、喂针部件(Needle feeding assemblies)

序号 Ref. No	公司件号 Part No	参考件号 Ref. Part. no	名称	Description	数量 Number
1	30117005	257565	喂针	spreader	1
2	30104022	254516	喂针架	lever/assy	1
3	S01005	7020	螺钉 M4×10	screw	1
4	S01017	7022	螺钉 M4×14	screw	1
5	30102023	254508	摆动轴	crankshaft	1
6	20108006	212039	挡圈	collar	1
7	S10005	S071	挡圈螺钉 M3×3	screw	2
8	20123021	202176	油线	oil wick	1
9	30123008	207925	摆动轴油孔毛毡	felt	2
10	001008	233020	O型圈 9×1.8	o ring	1
11	30105013	254506	喂针摆动连杆	crank	1
12	S10029	4547	螺钉 M6×0.75×5	screw	2
13	30126005	254507	喂针摆动轴	block	1
14	30102024	254519	摆动		



#### 十四、松线部件(Thread loosening assemblies)

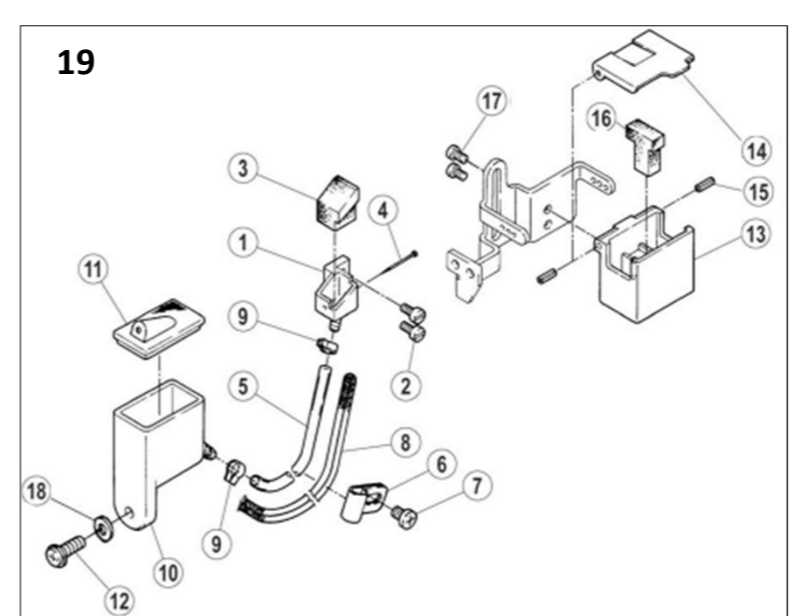
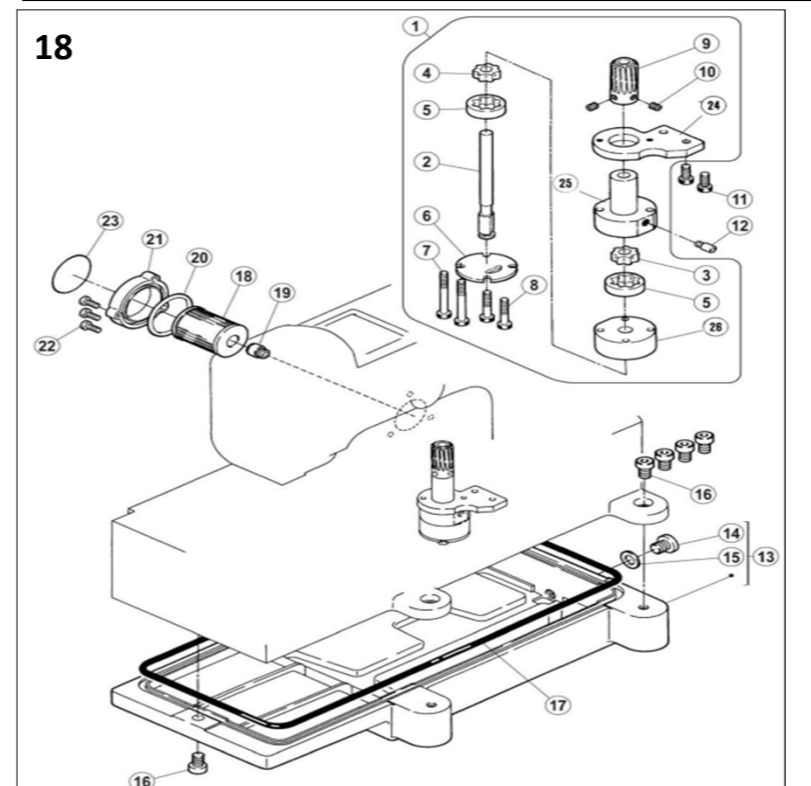
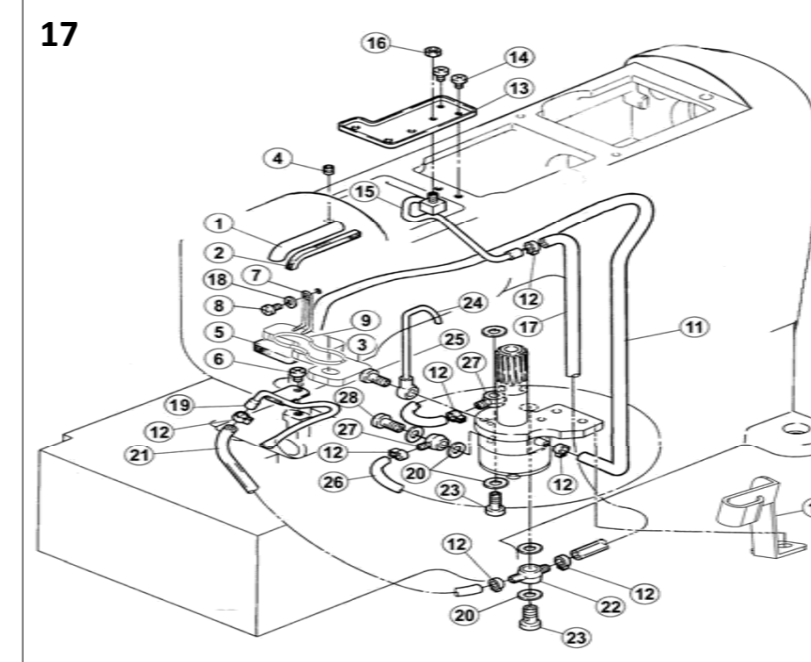
序号Ref. No	公司件号 Part No	参考件号 Ref. Part. no	名称	Description	数量 Number
1	31013014		松线架	Loose thread stand	1
2	3102200200		松线钢丝软轴		1
3	31012048		松线拉板	Loose line board	1
4	S04010		螺钉	screw	2
5	S01004		螺钉	screw	4
6	31012044		钢丝支撑板	Wire rope clamp	1
7	31012025		钢丝绳压板	Wire rope clamp	1
8	S01005		螺钉	screw	1
9	31013007		松线架	Loose line board	1
10	31013016		陶瓷过线管	The ceramic tube thread	5
11	31013007		三孔过线板	thread guide	5
12	31013022		松线板	Loose line board	1
13	31013041	206202	调节套	spacer	5
14	3101300400	254010A9U	调线组件(弱)	tension spring assembly(light)	3
15	3101300500	254010B9U	调线组件(中)	tension spring assembly	1
16	3101300600	254010C9U	调线组件(强)	tension spring assembly(light)	1
17	310130010	001817-2A	夹线器	screw stud	1
18	310128016	210319	夹线片	tension disc	2
19	310123027		松线夹线片垫	felt	1
20	31011005	208450-UA	调压止动盖	cup	1
21	310127011	3101037	调压簧(强)	spring(heavy)	3
22	31011006	208448	调压止动套	ratchet	1
23	3101S16006	208447-UA	调压螺母	nut	1
24	310127012	201086	调压簧(中)	spring(heavy)	1
25	310127013	201088	调压簧(弱)	spring(light)	1
26	3101300700	201068	夹线器	tension	1
27	31009004		松线垫块	block	1

#### 十五、过线部件(Thread loosening assemblies)

序号 Ref. No	公司件号 Part No	参考件号 Ref. Part. no	名称	Description	数量 Number
1	S01004	7019	螺钉M4x7.8	screw	5
2	31013006	253505A	长过线板	thread take-up	1
3	S05004	4501	螺钉M5X14	screw	1
4	W02001	303067	垫圈	washer	1
5	310101018	253504	过线座	lever	1
6	20622019		油封	plug	1
7	3101S12001	5084	曲柄螺钉	screw	2
8	310108005	240201	挡圈	ring	1
9	310128008		摆架轴套圈	washer	1
10	31002001	253503	过线座轴(中轴)	shaft	1
11	310128019	204107	垫片	washer	1
12	W02002	201252	M4垫圈	washer	1
13	S05048	4527	螺钉M4X10	screw	1
14	S01027	7009	螺钉M3X6	screw	1
15	31013017	253507	三孔过线	thread guide	1
16	31112009		护线架	thread support	1
17	S01006		螺钉	screw	1
18	310128034		垫圈	washer	1
19	31013005		过线板	thread guide	1
20	206S30016	7170	螺钉	screw	2
21	S01004	7018	螺钉M4x7.8	screw	4
22	31012045		U型夹线座	thread tension bracket	1
23	31012033	253511	喂针小过线	thread guide	1
24	S10026	4554	螺钉M3x3	screw	1
25	31012025	234561	夹线板	thread guide	1
26	310127014	253517	调压簧	spring	1
27	31012026	253593	压线板	tension disc	1
28	3101S20009	OW09070-2	调线螺钉	screw	1
29	S10001	4535	螺钉M3x4	screw	3
30	31013012	253545	针杆过线座	holder	1
31	31013013	234521	过线杆	thread guide	3
32	31012027	253544	硅油合固定架	thread guide	1
33	W01001	303448	M4垫圈	washer	1
34	S01006	7009	螺钉M3x4.5	screw	2
35	302S16005		调压螺母	adjusting nut	1
36	3101S30055		调线螺钉	adjusting screw	1
37	310127016	137109	夹线簧	spring	1
38	20112033	137108	夹线片	thread retainer	2
39	31012032	253547	喂针二眼过线	thread guide	1
40	31112008	253548	喂针过线板	thread guide	1
41	31012018		过线板	thread guide	1
42	31012029	253514	喂针过线	thread guide	1
43	31013011	253515	过线板	thread guide	1
44	3111200800		喂针过线组件	thread guide	1

#### 十六、打线凸轮外移部件(Outside cam assemblies)

序号Ref. No	公司件号 Part No	参考件号 Ref. Part. no	名称	Description	数量 Number
1	310102065		打线凸轮轴	shaft	1
2	H03004		挡圈12	ring	1
3	B04017		轴承6001Z	bracket	2
4	H01011		挡圈 28	ring	2
5	310125004		小同步带轮1	small gear1	1
6	310122100		油封	plug	1
7	S10029		螺钉 M6×0.75×5	screw	4
8	310135005		小同步带	small timing belt	1
9	S10002		螺钉 M5×5	screw	2
10	310103071		打线凸轮组件	thread takeup	1
11	201S15003		挡圈螺钉	screw	2
12	H01016		挡圈21	ring	1
13	310103033		挡油套	oil baffle set	1
14	31012231		打线架	bracket	1
15	B06004		轴承 6801RS	bracket	1
16	310108011		挡圈	washer	1
17	31013045		过线	thread guide	1



18	S01001		螺钉 M4×7	screw	1
19	30113016		过线	thread guide	1
20	30213045		过线	thread guide	1
21	3101S30055		调压螺钉	screw	1
22	10128001		毛毡垫	felt	1
23	12928036		小夹线垫片	thread guide disc	2
24	12927012		小夹线弹簧	pretension spring	1
25	129S30012		夹线螺母	tension nut	1
26	L02001		螺钉 M4×8	screw	1
27	31012230		打线座	bracket	1
28	30227031		卡簧片	clamp	1
29	S04021		螺钉	screw	2
30	207S11020		螺钉 M3×4	screw	3
31	31012233		打线片	thread guide	1
32	30313019		过线片(左)	thread guide (left)	1
33	30313020		过线片(右)	thread guide (right)	1
34	W03007		垫圈	washer	2
35	3101S20020		螺钉	screw	1

#### 十七、润滑部件(Lubrication assemblies)

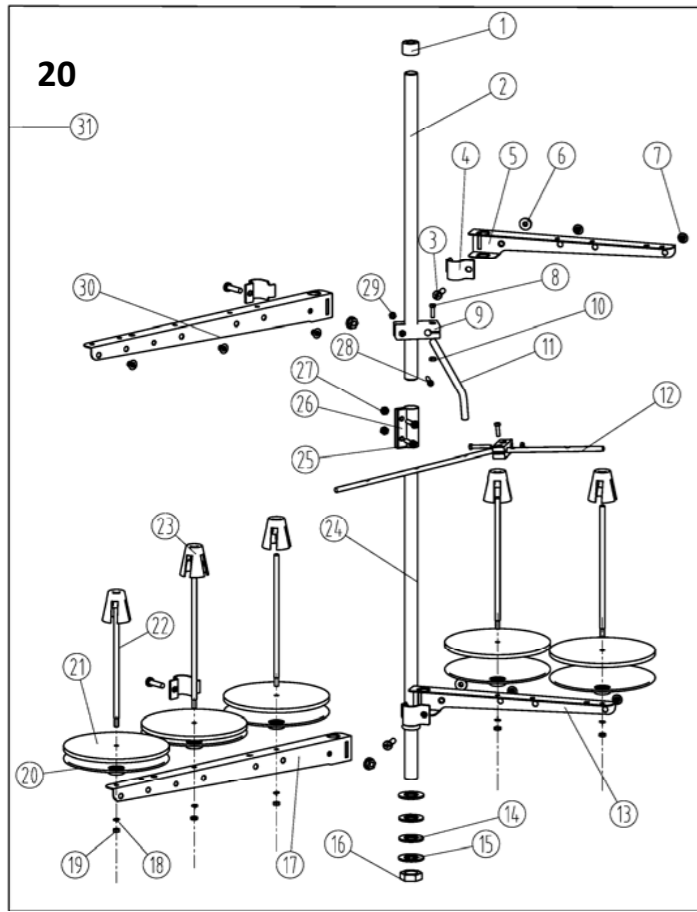
序号 Ref. No	公司件号 Part No	参考件号 Ref. Part. no	名称	Description	数量 Number
1	30121012	255003	铜油管	oil pipe	1
2	30123010	240136	油毡	felt	1
3	30123025		针杆毛毡	felt	1
4	S10002	4514	螺钉 M5×5	screw	1
5	30123009	255021	油毡	felt	1
6	301S11024		滑块底座螺钉	screw	1
7	30127045	200136	回油毡卡簧	clamp	1
8	S01004	255005	螺钉 M4×7.8	screw	1
9	30127060		毛毡卡簧	clamp	1
10	30112186		油管固定架	supporting	1
11	12921002	240135	维尼龙油管	tube	1
12	20429001	202199	油管卡簧	clamp	8
13	30112039	255006	接油盘	oil guard	1
14	S10002	7017	螺钉 M4×6.5	screw	2
15	3012101500	255007-91	喷油管组	oil distributor	1
16	N01001	4821	螺母 M4	nut	1
17	30121022	240134	Φ4×Φ6油管	tube	1
18	W01001	303448	垫圈 4	ring	1
19	30121009	255010-91	喷油管	oil distributor	1
20	20122033		垫片	washer	6
21	30121022	240134	Φ4×Φ6油管	tube	1
22	30136004	200136	双头油管接头	joint	1
23	301S30013	200152	过油螺钉	joint screw	2
24	30136003	255035-91	铜油管接头	pipe	1
25	301S30012	255037	油管螺钉	screw	1
26	30121022	240134	Φ4×Φ6油管	tube	1
27	30136001	200136	油管接头	joint	2
28	201S30004	200152	过油螺钉	joint screw	1

#### 十八、油泵部件(Oil pump assemblies)

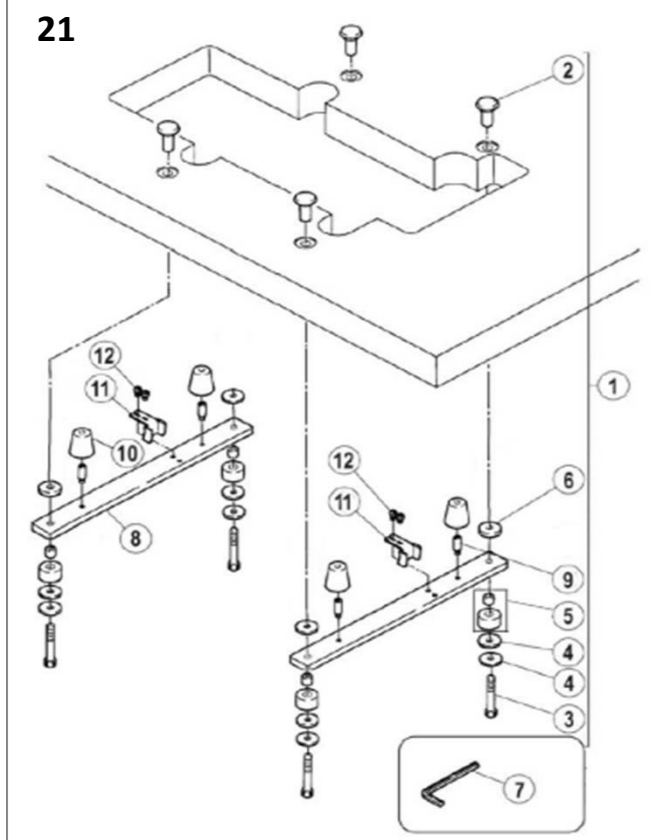
序号 Ref. No	公司件号 Part No	参考件号 Ref. Part. no	名称	Description	数量 Number
1	3012000100	255040-91	油泵组件	oil pump assy	1
2	30102031	255024	油泵轴	shaft	1
3	30120004	255025	主动轮2	rotor	1
4	30120007	255026	主动轮1	rotor	1
5	30120005	255027	从动轮	rotor	2
6	30120008	255028	油泵盖	cover	1
7	301S20011	7105	油泵螺钉	screw	2
8	S05006	7026	螺钉 M4×25	screw	2
9	30125003	255019	油泵蜗轮	worm wheel	1
10	S10002	4514	螺钉 M5×5	screw	2
11	S05004	4501	螺钉 M5×14	screw	2
12	301S30014		过油螺钉	joint screw	1
13	30101023	255000	油盘	oil reservoir	1
14	301S11015	5138B	塔油螺钉	screw	1
15	20528014	202287A	垫圈	washer	1
16	S05007	4504	螺钉 M8×20	screw	5
17	30122025	255001	油盘密封圈	o ring	1
18	20136001	206233	滤油器	filter element	1
19	201S30030	210200	滤油器接头	bracket/filter	1
20	001010	206431	O型圈 38.7×3.55	o ring	1
21	300140	210201-SD	滤油器盖	cover	1
22	S01003	7021	螺钉 M4×12	screw	3
23	30131004	9A3002	提示说明	filter seal	1
24	30120002		油泵固定板	fixed plank	1
25	30220001		油泵体(上)	oil pump (up)	1
26	30120006		油泵体(下)	oil pump (down)	1

#### 十九、硅油盒装置部件(Silicon oil delice assemblies)

1	30101027	255013	机针冷却器	needle cooler	1
2	S01027	7010	螺钉 M3×6	screw	2
3	30123012	255014	油毡	felt	1
4	30126009	210766	销	pin	1
5	30121021	240117	Φ5×Φ7油管	tube	1
6	30127020	206115	油管压簧片	bracket	1
7	S01004	7019	螺钉 M4×7.8	screw	1
8	20123021	202175	油线	oil wick	1
9	20429001	202199	油管卡簧(小)	clamp	2
10	30101026	255015	下硅油盒	silicone oil	1
11	30122026	255016	下硅油盒盖	cap	1
12	S01005	7020	螺钉 M4×10	screw	1
13	30111070	207066-UD	上硅油盒(塑料)	silicone oil	1
14	30112040	207067-UD	硅油盒盖	cap	1
15	P03008	206781	销 2×6	pin	2
16	30123011	207068	硅油棉	felt	1
17	S01006	7009	螺钉 M3×4.5	screw	2
18	W01001	303448	垫圈 4	washer	1

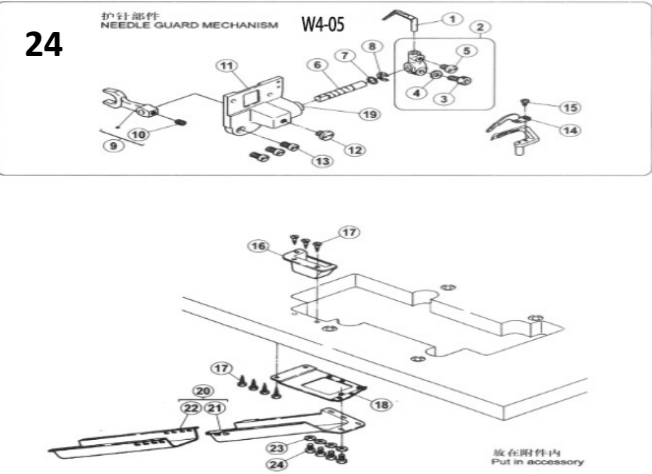


台板部件 (放在附件内)  
machine table mechanism (put in accessory)



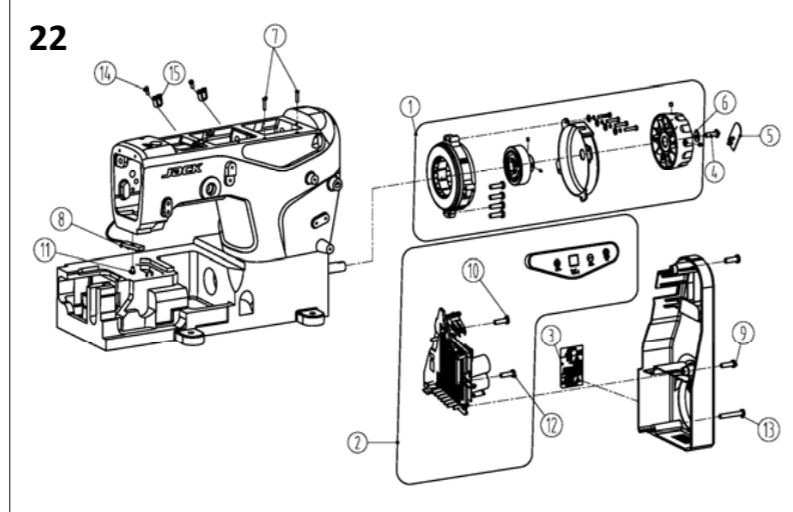
二十一、油盘托板部件(Oil plate assemblies)

序号 Ref. No	公司件号 Part No	参考件号 Ref. Part. no	名称	Description	数量 Number
1	3010103200	9048	安装螺钉 (一套)	screw(set)	1
2	20131028	206336	托盘固定螺母	nut	4
3	20131027	4512	托板内六角螺钉	bolt	4
4	20131029	206337	大垫圈	washer	8
5	20131030	205764	防振套	rubber cushion	4
6	30122031	205467	减震垫圈	spacer	4
7	20131056	272	内六角扳手 (5mm)	allen key driver/5mm	1
8	30112198	259000	油盘托板	rest board	2
9	301S30018	7093	螺钉	screw	4
10	30122029	206338	油盘减振垫	rubber cushion	4
11	30112041	206329	链条挡板	treadle chain guide	2
12	S01011	7027	螺钉 M5×10	screw	4



二十、线架部件(Thread spool assemblies)

序号Ref.No	公司件号 Part No	参考件号 Ref. Part. no	名称	Description	数量 Number
1	20131019		棒帽	Rod Cap	1
2	20131001		上管	Upper thread column	1
3	20131020		导线环螺钉	Screw	4
4	20131016		导线环	Thread spool tray bracket	1
5	20131016		导线架	Thread spool tray bracket	1
6	201S16006		导线环螺母	Thread guide hook nut	4
7	20131018		过线环	Thread guide hook	5
8	20131021		棒架螺钉	Screw	2
9	20131009		棒架	Clamp plate	1
10	201S16004		螺母	Nut	4
11	20131011		导线棒	Thread guide bar	1
12	30113019		过线棒	Thread guide	4
13	20131017		托线架	Thread spool tray bracket	1
14	20122049		防震垫	Plate dog link washer	2
15	20128025		下管垫圈	Lower washer	2
16	201S16005		螺母	Nut	1
17	20131004		托线架	Thread spool tray bracket	1
18	20128018		垫圈	Washer	5
19	201S16004		螺母	Nut	4
20	20131007		线盘	Spool tray	5
21	20131010		线盘垫	Spool tray cushioning	5
22	20131006		线托棒	Spool pin	5
23	20131008		线圈定位套	Spool Cushion	5
24	20131004		托线架	Thread spool tray bracket	1
25	S04050		螺钉 M5×15	Screw	2
26	20131003		套	Bushing	1
27	N01030		套螺母	Nut	2
28	20131022		棒架螺钉	Screw	2
29	201S16004		螺母	Nut	4
30	20131015		导线架	Threadspooltray bracket	1
31	20131074		线架组件	Thread stand component	1

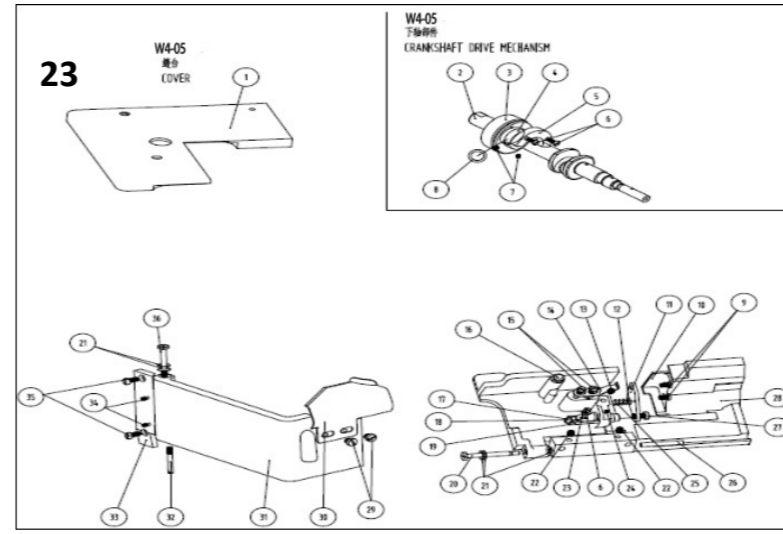


二十二、DI部件专用件(DI specific parts)

序号 Ref.No	公司件号 Part No	参考件号 Ref. Part. no	名称	Description	数量 Number
1	3103300100		缝线光电伺服电机	electrical machine	1
2	3103000500		电控组件	electrically controlled	1
3	20131063		警示牌	washer	1
4	207s11026		螺钉	pin	1
5	21111018		塑料logo	logo	1
6	21228001		垫片	washer	1
7	310s17001		螺钉	screw	2
8	3103000300		LED灯	LED light	1
9	S05004		螺钉M5×10	screw	2
10	S05003		螺钉M5×10	screw	1
11	s05190		螺钉M3×6	screw	1
12	S05068		螺钉M5×20	screw	1
13	S05003		螺钉M5×35	screw	1
14	207S11007		螺钉M5×5.5	screw	2
15	20711210		线夹	clip	2

二十四、O5专用部件(O5 specific parts)

序号Ref.No	公司件号 Part No	参考件号 Ref. Part. no	名称	Description	数量 Number
1	30117002	357551B	后护针挡	needle guard(rear)	1
2	30117007	251505-92	护针挡架组件	lever assy	1
3	S05003	4500	螺钉 M5×10	bolt	1
4	W02001	303067	垫圈	washer	1
5	S01002	7017	螺钉 M4×6.5	screw	1
6	30102037	251503	护针轴	shaft	1
7	W01021		垫片	washer	1
8	H05013	202522	挡圈	ring	1
9	400064	251504	叉架	lever	1
10	S10002	4514	螺钉 M5×5	screw	1
11	30101036	251500-91	护针轴座	bracket	1
12	301S11016	7081	螺钉	screw	1
13	S01004	7019	螺钉 M4×7.8	screw	3
14	30117003		前护针挡	needle guard(front)	1
15	S01012		螺钉 M2.5×4	screw	1
16	30111013	306473-UA	挡料斗	waste chute top(C)	1
17	301S30019	4905	木螺钉	screw	7
18	30112048	306474A	托板	bracket	1
19	30103046		套筒	bushing	1
20	3011101400		排料筒座组件	waste chute assy	1
21	30111014	205468-UA	排料筒座	waste chute top(A)	1
22	30111015	205469-UA	排料筒	waste chute top(B)	1
23	30128036		垫片	washer	1
24	S01005	7020	螺钉 M4×10	screw	4



二十五、O5专用部件(O5 specific parts)

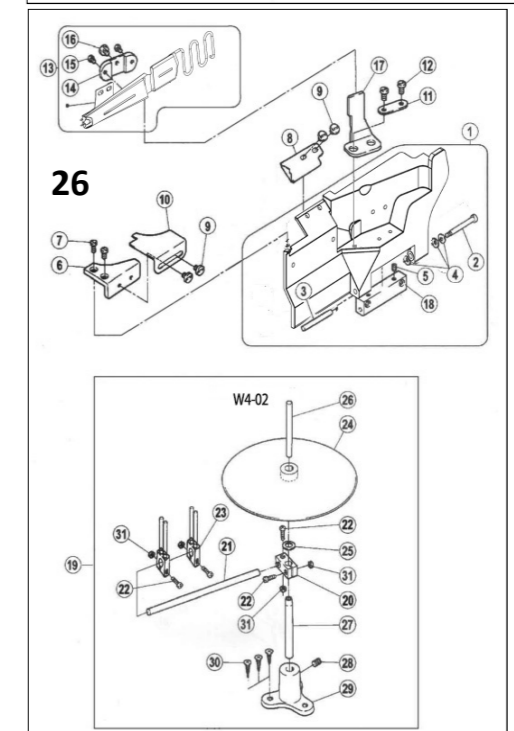
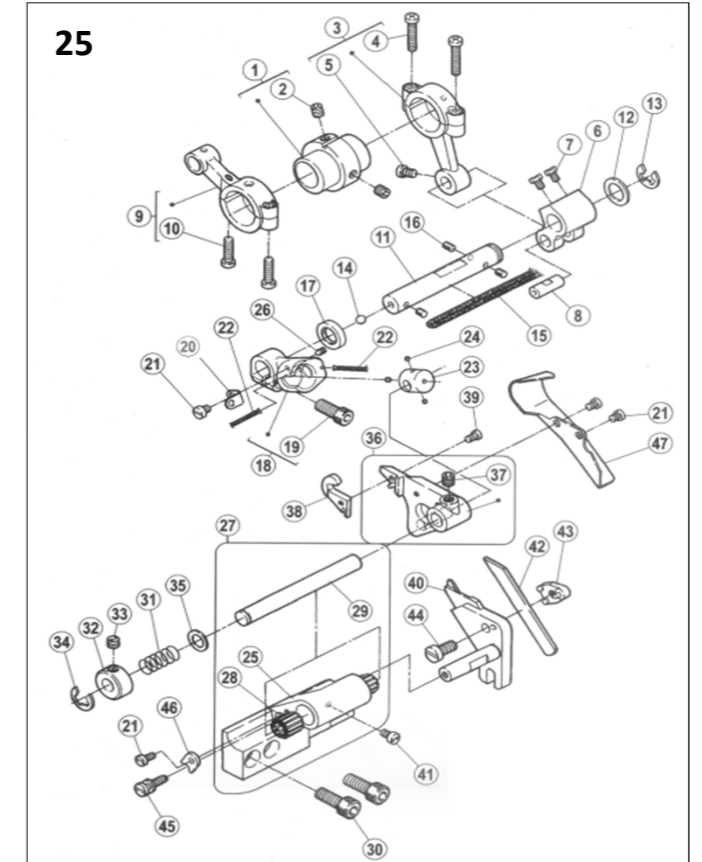
序号Ref.No	公司件号 Part No	参考件号 Ref. Part. no	名称	Description	数量 Number
1	30110009	255500	凸轮	eccentric assy	1
2	S10006	4539	螺钉 M5×6	screw	2
3	400062		连杆组件	eccentric assy	1
4	S01008		螺钉 M3.5×13	screw	4
5	S01010		螺钉 M4×8	screw	1
6	30104007		弯针曲柄	crank	1
7	301S12001		螺钉	screw	2
8	30126003		曲柄销	pin	1
9	400063		弯针摆动连杆	connection assy	1
10	S01008		螺钉 M3.5×13	screw	2
11	30102038	255502	曲柄轴	shaft	1
12	30128008	240102	护针轴垫圈	washer	1
13	H05001		垫圈10	ring	1
14	30209009		差动轴滚珠	ball	1
15	30123014		油线	oil wick	1
16	30123001		毛毡	felt	3
17	30122019		油封	oil seal	1
18	30104028	255503	摆轴曲柄	lever assy	1
19	S05004		螺钉 M5×14	screw	1
20	30112049	255504	挡板	latch	1
21	S01006	7009	螺钉 M3×4.5	screw	4
22	30123015		油线	oil wick	2
23	30102039	255505	摆轴	shaft	1
24	30123008		毛毡	felt	3
25	30101040		刀座	bracket assy	1
26	S12002		螺钉 M3×4	screw	1
27	3010104000		刀座组件	bracket assy	1
28	30103085		刀座套筒	needle bearing	2
29	30102040	255508-2	下刀座轴	shaft	1
30	S05019		螺钉 M6×16.3	screw	2
31	30127022	306105	弹簧	spring	1
32	30108006	192024	挡圈	ring	1
33	209S14008	W00024-1	螺钉	screw	1
34	H05013	202522	挡圈	ring	1
35	30128026	207045	垫片	washer	1
36	30101037	255507-91	上刀架	upper knife holder	1
37	S12003	4547	螺钉 M6×0.75×5	screw	1
38	30119001	306394	上刀	upper knife	1
39	301S11017	5109	上刀固定螺钉	screw	1
40	30101039	255509	下刀架	lower knife holder	1
41	301S1025	7036	护针曲柄螺钉	screw	1
42	20619004	204161	下刀	lower knife	1
43	30101038	255510	下刀挡板	lower knife clamp	1
44	S01011	7028	螺钉 M5×10	screw	1
45	301S30021	255513	调节螺钉	screw	1
46	30112051	255511	挡片	guide	1
47	30112050	255515	除削板	chip guard	1

二十六、O2专用部件(O2 specific parts)

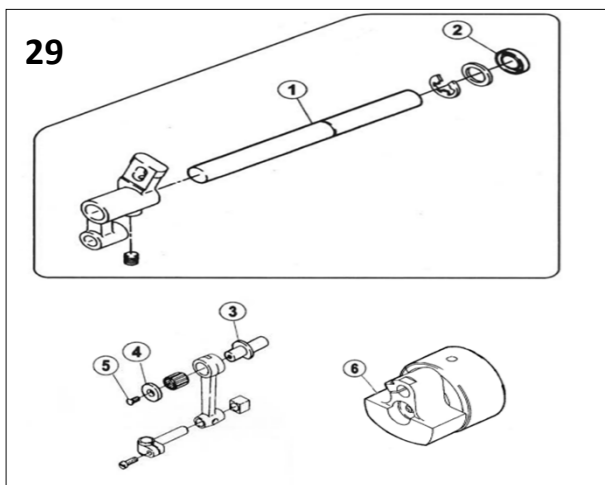
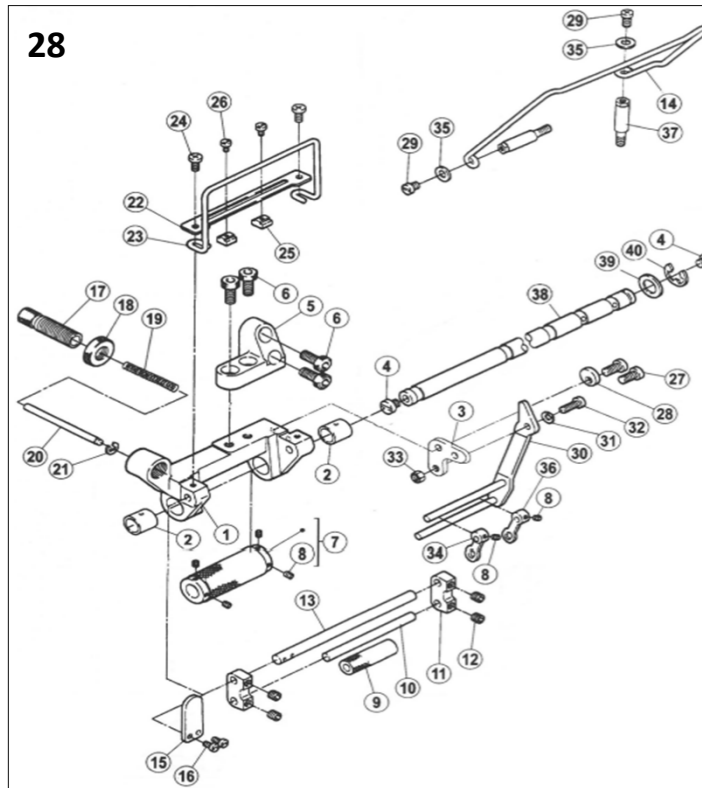
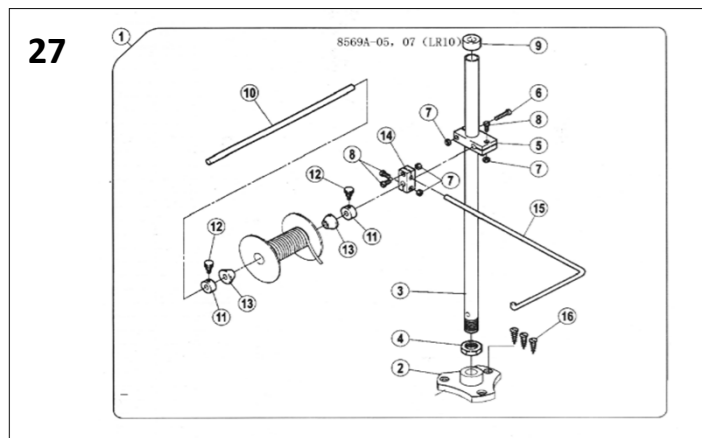
序号Ref.No	公司件号 Part No	参考件号 Ref. Part. no	名称	Description	数量 Number
1	303796	250033-SD	前罩缝台组件	front cover	1
2	301S20002	250013	前罩缝台座螺钉	screw	1
3	301S20003	250014	前罩缝台座螺钉	screw	1
4	30128002	201191	弹簧垫圈	spring	3
5	S10002		螺钉 M5×5	screw	2
6	300130	250050-SD	前罩缝台挡板座	front cover(small)	1
7	S01011	7028	螺钉 M5×10	screw	2
8	30112061	206601A	缝料挡板	fabric guard	1
9	S01065	7079	螺钉 M5×6	screw	4
10	30112060	206439	前罩缝台挡板	auxiliary plate/front	1
11	30112063	206460	龙头架垫	washer	1
12	S01011	7028	螺钉 M5×10	screw	2
13	301206800		龙头组件	bracket assy	1
14	30109019	201913	龙头固定板	bracket	1
15	301S11021	5113	螺钉	screw	2
16	L02009		螺栓 M6×10	bolt	1
17	30112062	201914	龙头架	bracket	1
18	30101063	250012	前罩缝台座	bracket	1
19	3011101800		托盘组件	bracket assy	1
20	30111020	256-SA	托盘导棒架	bracket	1
21	30113023	255	带子导座	guider post bar	1
22	S04004		螺母 M4×15	nut	4
23	301010500		尖带座组件	holder assy	2
24	30111019	247-SA	带子托盘	tape disc	1
25	30128029	270	托盘垫圈	washer	1
26	30103060	253	托盘上棒	tape disc bar	1
27	30103061	250	托盘下棒	tape disc bar	1
28	S09002	1448	螺栓 M6×6	bolt	1

二十三、O5专用部件(O5 specific parts)

序号	公司件号	参考件号	名称	Description	数量
1	300471	250052	左缝台盖	bed cover	1
2	400068	250501-91	下轴	crankshaft assy	1
3	3012400300		油封轴承	bushing	1
4	30103003	250504	前轴套	bushing	1
5	30109002	250534	下轴平衡块	balance weight	1
6	S01009		螺钉 M3×7.5	screw	3
7	S10006	4539	螺钉 M5×6	screw	2
8	001001		O型圈15×2.65	O ring	1
9	S01001	7018	螺钉 M4×7	screw	2
10	30112045	250025-ME	前挡板	font cover(small)	1
11	30112046	250026	定位板	bracket	1
12	30126010	306920	平行销	pin	1
13	S10002	4514	螺钉 M5×5	screw	1
14	30127001	250051	前罩簧	flat spring	1
15	S01002	7017	螺钉 M4×6.5	screw	2
16	30122015		前罩防振垫	cushion	1
17	30102110	250027	前罩板轴	shaft	1
18	30112160	250028	挡板	stopper	1
19	30103160		套筒	bushing	1
20	301S20002	250013	前罩缝台座螺钉	screw	1
21	30128002	201191	弹簧垫圈	spring	5
22	S10006	4539	螺钉 M5×6	screw	2
23	W01002		垫片	washer	1
24	S10026	4554	螺钉 M3×3	screw	1
25	11727007		弹簧	spring	1
26	301S20003	250014	前罩缝台座螺钉	pin	1
27	S01011	7028	螺钉 M5×10	screw	1
28	30101161		前罩缝台座	arm cover (top)	1
29	301S11020	7074	螺钉	screw	2
30	30112044	255517	左挡板	fabric guide	1
31	30101034	250035A	侧盖	side cover assy	1
32	301S20005		销螺钉	pin	1
33	300793		侧盖合扇	cover	1
34	S10001		螺钉M3×4	screw	2
35	S01005	7020	螺钉 M4×10	screw	3
36	301S20004		侧盖合扇螺钉	screw	1



29	30101049	251-SA	托盘座	bracket	1
30	301S30020	4913	木螺钉	screw	3
31	N01001		螺母M4	nut	4

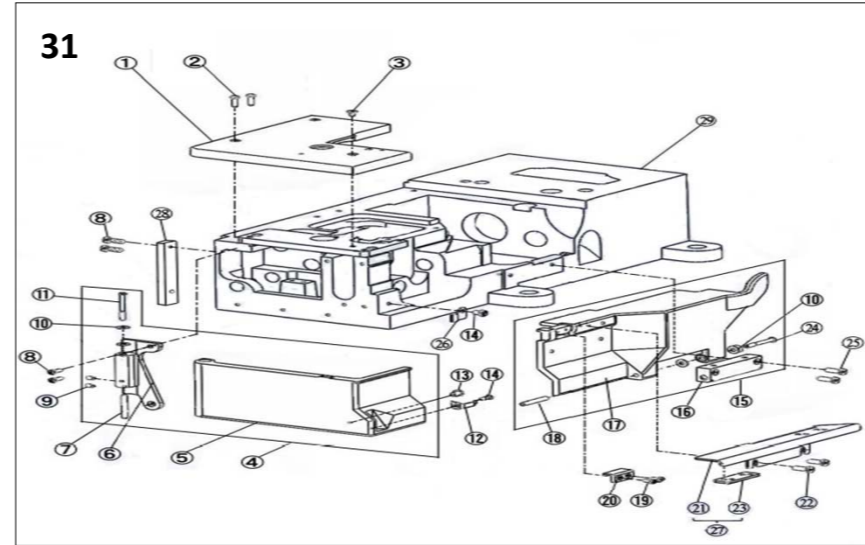
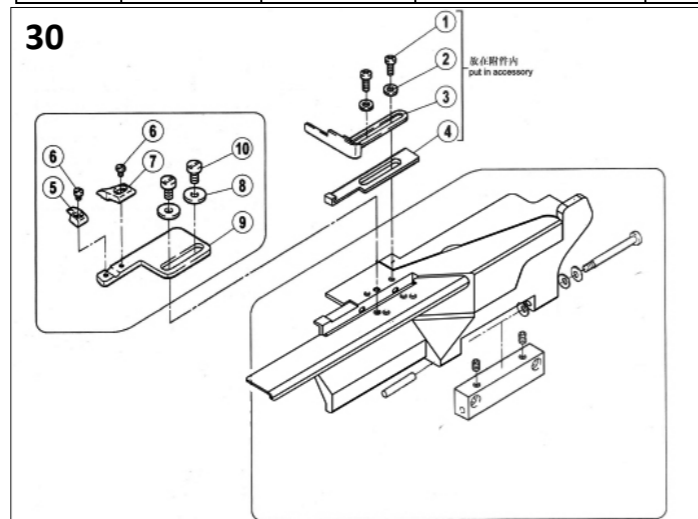


二十七、05、07专用部件 (05、07 specific parts)

序号Ref. No	公司件号 Part No	参考件号 Ref. Part. no	名称	Description	数量 Number
1	3010204100	306469A9S	带子组件	reel stand assy	1
2	30103047	306468-SA	支柱盘	bracket	1
3	30102042	306466-SA	支柱	rod	1
4	N02001		螺母SM3/4×16	nut	1
5	30111008	383-SA	棒架	bracket	1
6	S04003		螺钉 M4×25	screw	1
7	N01005		螺母 M4	nut	4
8	S04004		螺钉 M4×15	screw	3
9	30122027	386	棒帽	rod cap	1
10	30102043	306464	带架直棒	shaft	1
11	30103048	306463	轴古	collar	2
12	S01068		螺钉 M4×8	screw	2
13	30103064	306462	轴锥架	reel guide	2
14	30111009	233-SA	固定器	bracket	1
15	30113020	306467	带架棒	rod	1
16	301S30022	4913	木螺钉	screw	3

二十八、05、07专用部件 (05、07 specific parts)

序号Ref. No	公司件号 Part No	参考件号 Ref. Part. no	名称	Description	数量 Number
1	300144		压带架座	bracket assy	1
2	30103055		套筒	bushing	2
3	30112058		夹带连接板	bracket	1
4	301S11020	255515	压带轴螺钉	screw	2
5	300143		压带架支座	bracket	1
6	S05019		螺钉 M6×16.3	screw	4
7	3010305700		压带轴组件	roller assy	1
8	S10005		螺钉 M3×3	screw	6
9	30103059		压带轴II	rooler	1
10	30102045		夹带短轴	shaft	1
11	30109018	255502	夹带轴架	bracket	2
12	S10002	240102	螺钉 M5×5	screw	4
13	30102046		夹带长轴	shaft	1
14	30113021		带子架	lace guide	1
15	30112059		手柄	lever	1
16	S01027		螺钉 M3×5	screw	2
17	301S30027		调节螺钉	screw	1
18	301S16011	255503	调节螺母	nut	1
19	30127024		弹簧	spring	1
20	30126013	255504	销轴	shaft	1
21	H05002	7009	挡圈5	ring	1
22	30112055		压带板	guide	1
23	30113022	255505	压带架	lace guide	1
24	S01002		螺钉 M4×6.5	screw	2
25	301S16010		位置挡块	guide	2
26	301S11018		螺钉	screw	2
27	S01004		螺钉 M4×7.8	screw	2
28	30128028		偏心垫	stopper	1
29	S01004	255508-2	螺钉 M4×7.8	screw	2
30	3011205600		夹带架组件	bracket assy	1
31	30128020	306105	垫片	spring	1
32	S05048	192024	螺钉 M4×10	screw	1
33	N01001	W00024-1	螺母 M4	nut	1
34	30105017	202522	夹带连杆 I	lace guide	1
35	W01004	207045	垫圈5	washer	2
36	30105018	255507-91	夹带连杆 II	lace guide	1
37	301S30025	4547	台螺钉	screw	2
38	30103044	255513	压带轴	shaft	1
39	30128008	255511	摆架轴垫圈	washer	1
40	H05001	255506	挡圈10	ring	1

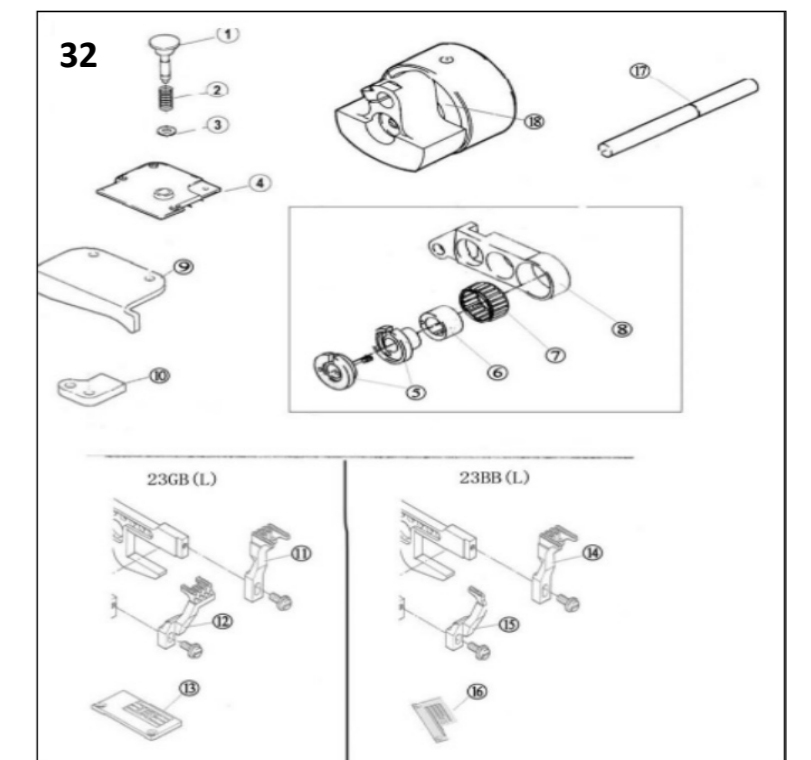


三十一、W4N专用部件 (W4N specific parts)

序号Ref. No	公司件号 Part No	参考件号 Ref. Part. no	名称	Description	数量 Number
1	300953		左缝台盖 (喷漆)	bed cover (left)	1
2	S01003	7021	螺钉 M4×12	screw	2
3	S02001	7043	螺钉 M4×6	screw	1
4	300952		侧盖组件 (喷漆)	side coverassy	1
5	30101111		侧盖	side cover	1
6	30101112		侧盖合扇	cover	1
7	301S20005		销螺钉	pin	1
8	S01005	7020	螺钉 M4×10	screw	4
9	S10001		螺钉M3×4	screw	2
10	30128002	201191	弹簧垫圈	spring	5
11	301S20004		侧盖合扇销钉	screw	1
12	30127030		侧前锁紧簧	flat spring	1
13	30122015		前罩防振垫	cushion	1
14	S01002	7017	螺钉 M4×6.5	screw	2
15	300951		加宽前门板组件	front coverasy	1
16	30101063		前罩缝台座	bracket	1
17	30101110		前门板	front cover	1
18	301S20003	250014	前罩缝台座螺钉	pin	1
19	S01006	7009	螺钉 M3×4.5	screw	2
20	30209018		针板座接块	block	1
21	30112097		加宽前门板接板	block	1
22	S01065	7079	螺钉 M5×6	screw	2
23	30112098		加宽前门板接板垫块	baseplate	1
24	301S20002	250013	前罩缝台座螺钉	screw	1
25	S01007	7023	螺钉 M4×13.5	screw	2
26	30112095		侧前锁紧舌	flat spring	1
27	302525		加宽前门板接板组件	front coverasy	1
28	300955		盖板	cover	1
29	302109		机壳	machine frame	1

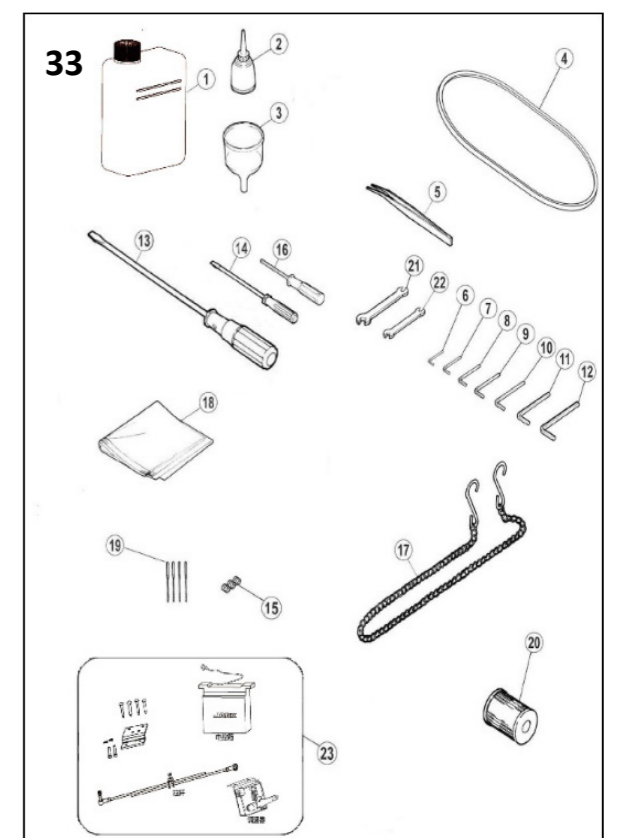
三十三、附件部件 (Accessories assemblies)

序号Ref. No	公司件号 Part No	参考件号 Ref. Part. no	名称	Description	数量 Number
1	20131037		油壶 (大)	oil container	1
2	20131038		小油壶 (尖嘴)	oilier	1
3	20131039		漏斗	oil funnel	1
4	30135004		皮带 (非直驱专用)	leather belt	1
5	20131051		镊子	tweezers	1
6	30131007		内六角扳手 (1.5mm)	allen key driver/1.5mm	1
7	20131046		内六角扳手 (2mm)	allen key driver/2mm	1
8	30131010		内六角扳手 (2.5mm)	allen key driver/2.5mm	1
9	30131012		内六角扳手 (3mm)	allen key driver/3mm	1
10	20131047		内六角扳手 (4mm)	allen key driver/4mm	1
11	20131056		内六角扳手 (5mm)	allen key driver/5mm	1
12	30131026		内六角扳手 (6mm)	allen key driver/6mm	1
13	20731047		螺丝刀 (大)	screwdriver (large)	1
14	10131004		螺丝刀 (小)	screwdriver (small)	1
15	S10005		螺钉 M3×3	screw	3
16	20131044		内六角扳手 (1.5mm直)	allen key driver/1.5mm	1
17	30131018		链条 (非直驱、DI专)	chain	1
18	10131005		机头罩	dust cover	1
19	30117001		机针	needle	4
20	20136001		滤油器	filter element	1
21	30131005		扳手 (7mm-9mm)	wrench/(7mm-9mm)	1
22	30131006		扳手 (8mm-10mm)	wrench/(8mm-10mm)	1
23	3013001100		直驱控制器 (直驱专用)	DI Special Part	1



三十二、23专用部件 (23 specific parts)

序号 Ref. No	公司件号 Part No	参考件号 Ref. Part. no	名称	Description	数量 Number
1	30126016		针距调节按钮	pin	1
2	30127026		针距调节簧	spring	1
3	12928008		平垫圈	washer	1
4	30101162		下节左盖	cover	1
5	3010308900		调节器套组 (大针距)	eccentric retainer	1
	30103150		送布调节器	regulator	1
6	30103100		偏心轴承套 (大针距)	eccentric	1
7	B07043		轴承19×23×10	needle bearing	1
8	30104060		差动送布架 (大针距)	Link/main feed	1
9	30109025		左挡板	guide (left)	1
10	30109026		挡板	guide (lower)	1
11	30114028		送布牙 (356/364)	main feed dog	1
12	30114029		差动牙 (356/364)	differential feed	1
13	30115041		23GB针板 (356)	needle plate	1
	30115042		23GB针板 (364)	needle plate	1
14	30114030		送布牙 (356/364)	main feed dog	1
15	30114031		差动牙 (356/364)	differential feed	1
16	30115045		2302BB针板 (356)	needle plate	1
	30115046		2302BB针板 (364)	needle plate	1
17	30102051		摆轴	shaft	1
18	400308		针杆曲柄	motion assy	1



二十九、21、22专用部件 (21、22 specific parts)

序号Ref. No	公司件号 Part No	参考件号 Ref. Part. no	名称	Description	数量 Number
1	30102051	252004A	摆轴	shaft	1
2	30122008		油封	oil seal	1
3	30102050	251010A	连杆偏心轴	eccentric pin	1
4	30128030	205097	偏心轴垫	washer	1
5	S02007		螺钉M3×5	screw	1
6	400308		针杆曲柄	motion assy	1

三十、03、08专用部件 (03、08 specific parts)

序号Ref. No	公司件号 Part No	参考件号 Ref. Part. no	名称	Description	数量 Number
1	301S11024		滑块导座螺钉	screw	2
2	W01001		垫圈4	washer	2
3	30112065		缝料挡板1	fabric guide	1
4	30112066		缝料挡板2	fabric guide	1
5	30109020		盖缝附件1	fabric guide	1
6	S01036		螺钉 M3×3	screw	2
7	30109021		盖缝附件3	fabric guide	1
8	W01009		垫圈5	washer	2
9	30112064		盖缝附件2	bracket	1
10	S01011		螺钉 M5×10	screw	2

# JACK 杰克

## 快速服务 100%

### 产品使用说明书

使用说明和零件样本下载地址：  
PLEASE DOWNLOAD THE MANUAL AND SPARE PARTS FROM THE FOLLOWING WEBSITE:  
CASI(ÇA Efaaa aBêE ÇâBûaeÇE aa×Ü ÇâEÊTeâ ãe Çâãã0 ÇâEÇãe.  
POR FAVOR DESCARGAR EL MANUAL Y LIBRO DE PARTES Y REPUESTOS LO SIGUIENTE EN SITIO WEB:  
Пожалуйста, загрузите инструкцию по эксплуатации и деталировку (список запасных частей) со следующего вебсайта:  
http://download.chinajack.com

产品标准代号: QB/T2380-2013  
Standard code of the products: QB/T2380-2013

### 杰克缝纫机

JACK SEWING MACHINE  
HTTP://WWW.CHINAJACK.COM

### 安全须知

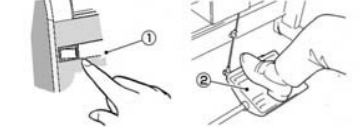
对于缝纫机本身各种装置,我们充分考虑到它的安全性。请遵照基本的操作方法,安全的进行工作。  
●拆除为保证安全所设置的装置,零件的情况下使用,是非常危险的,请绝对不要拆除后使用。  
●缝纫机在使用时,请不要在缝纫机台板上放置工具及缝纫时不必要的物品。  
●在对缝纫机进行检查、修理、清扫等维护作业时,请关闭电源开关,将电源插头从插座上拔下,并确认踩踏板也不会转动之后,再进行操作。

### OBSEVE THESE SAFETY PRECAUTIONS

Though We takes the utmost care to produce safe sewing machines and devices, operators should follow these basic safety rules.  
●To prevent accidents, do not remove safety devices or parts while operating the machine.  
●Do not leave tools or other unnecessary objects on the machine table while operating the machine.  
●Always turn off the power, unplug the machine, and then make sure that the machine does not run by pressing the pedal before performing any maintenance, such as checking, repairing, cleaning, etc.

### 注意

使用离合式马达的情况下,在关掉电源①后因惯性作用会继续旋转。这时如不注意踩动缝纫机踏板②时,缝纫机会突然动作,这是很危险的。请在关掉电源后,仍继续踩动踏板②,直至缝纫机完全停下来为止。

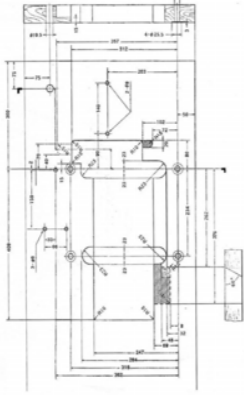


- 在离开缝纫机台时,务必请关掉电源。
- 停电时请务必关掉电源。
- 为了总是安全地,运转良好的使用缝纫机,日常的点检是不可缺少的,请予以注意。
- Turn off the power before leaving the machine table.
- In the event of a power failure, be sure to turn off the power.
- Check that the machine is securely grounded.

### 台板加工图

Schematic diagram to the machine table

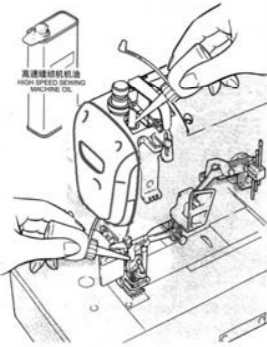
请参照下图进行台板的加工  
Cut the referring diagram



### 手动给油 Manual lubrication

手动给油是在缝纫机最初开始使用时,或相当一段时间重新开始时使用,请给油2~3滴油。  
机油请使用本公司指定的(HIGH SPEED SEWING MACHINE OIL)ISO粘度与VG22相同。

Supply 2 or 3 drops of oil by hand when the machine is used for the first time or has been left unused for some time.  
Note: Utilize (HIGH SPEED SEWING MACHINE OIL) recommendo por (ISO VG22)

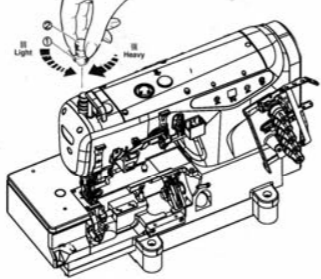


### 压脚压力调节

压脚压力的调节是松开螺帽①和旋转螺丝②来进行的。在取得平衡针脚的范围内,尽量调得松一些为好。

### Adjusting the presser foot pressure

Loosen adjusting (1) nut and turn adjusting screw(2) to adjust the presser foot pressure. It should be as light as possible, yet be sufficient to obtain the proper stitch formation.

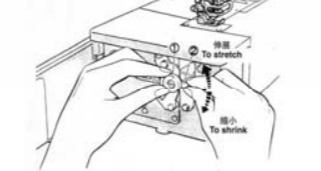


### 差动比的调节

差动比是通过松开螺帽①后,把调节杆②上下移动来进行调节的。调节后再拧紧螺帽①。

### Adjusting the diff feed ratio

Loosen nut (1) and move the lever up(2) and down to obtain the correct differential feed ratio then tighten nut (1)



### 针脚长度的调节

握住针距调节按钮,旋转手轮,针距调节按钮会陷进更深处。这时边握住针距调节按钮,边转动手轮,使校准标记对准所希望的数值。针脚长度调节。注:针脚长度的调节务必在调节差动比之后进行。

### Adjusting the stitch length

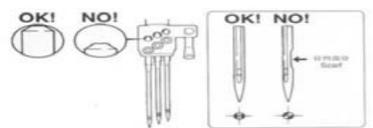
While pressing the push button,turn the handwheel to seek the position at which the push button goes further into the depth.Then keeping the button pressed,turn the handwheel and set the desired scale to the aligning mark. Note:Stitch length adjustment must only be made after the differential feed ratio has been changed.

### 换针

- 1.准确辨认针的前后,请将针头向着后方,即背向操作者进行安装。
- 2.针要牢固的插到孔的最深处。

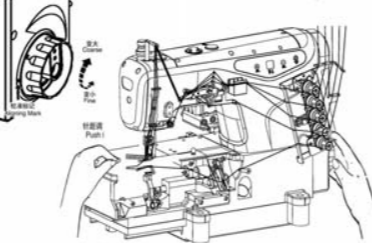
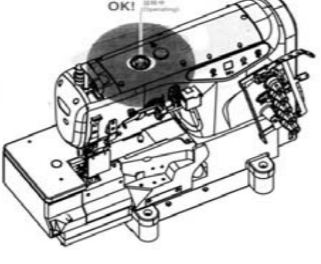
### Replacing the needle

- 1.Check the needle carefully to see that the scarf is turned to the rear of the machine.
- 2.Insert the needle to the proper depth, and fasten securely.



### 检查机油的循环

Cleaning the oil circulation

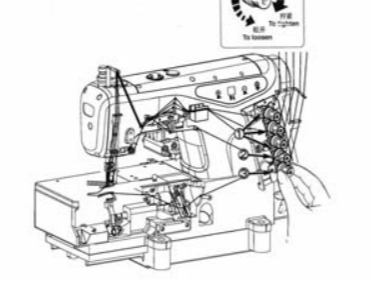


### 线状态的调节

线状态的调节是用针线状态螺帽①,上装饰线状态螺帽②,下针线状态螺帽③来进行调节的。

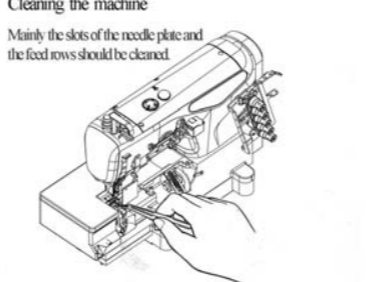
### Thread tension

Make tension adjustments with the needle thread knob(1),top cover thread knob(2),and looper thread knob(3).



### 缝纫机的清扫

Mainly the slots of the needle plate and the feed foot should be cleaned



### 油过滤器的检点与更换

- 机油过滤器,请于每6个月来点检或更换一次。
- 检点和更换每隔6个月进行一次!

### Cleaning and replace the oil filter

- Check and replace the oil filter every six months.
- Check and replace every 6 months!

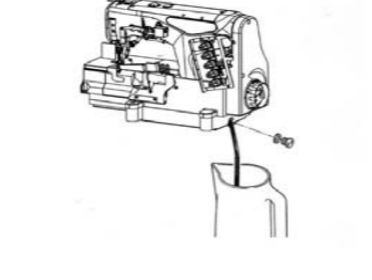


### 换机油

机油的更换,请在使用开始一个月后更换一次。然后,每6个月更换一次。

### Replacing the oil

Replace the oil one month after the first use and every six months thereafter.

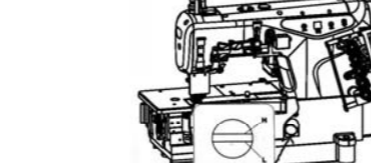


### 供油

加油量是使油面处于I线之间为好。当油面低于I线时,就要及时补充机油。机油请使用杰克公司指定的(HIGH SPEED SEWING MACHINE OIL) (ISO粘度与VG22相同)。

### Lubrication

After filling the oil pan,the oil level should lie between (I) and (L) lines. Add oil when the oil level reaches or goes below (L) line. Note: Use Jack designated oil (HIGH SPEED SEWING MACHINE OIL) (ISO VG22)

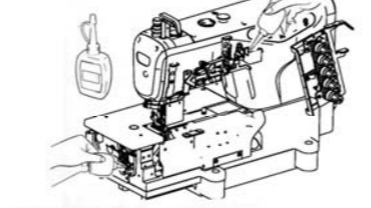


### 给HR装置供油

为了防止布纤维或线被切断,请尽早给HR装置供油。注:硅油请使用本公司指定的冷却油。[请使用日本UNION CARBIDE(株)的UCCL-4S10]

### Filling the HR device with silicon oil

Fill the device with oil before it is too low in order to prevent needle thread breakage and fabric damage. Note:Use recommended silicon oil [UNION CARBIDE CORPORATION] UCCL-4S10



### 穿线的方法

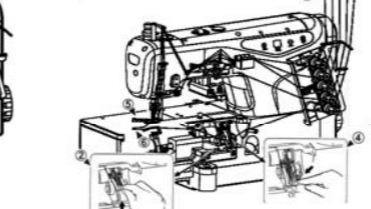
- (1)请掀起护眼板,打开机盖(3处)。
- (2)抬起弯针挑线架。
- (3)把机上原有的线与缝线用线绑结在一起。
- (4)按下弯针挑线架,弯针挑线架回到原位。
- (5)针线 将针线拉到针眼前,剪掉结头再次穿好针线。
- (6)弯针线,上装饰线直到拉出接头迁来后,用剪刀剪齐。

### Threading

- (1)Open the eye guard and three covers.
- (2)Take up the bracket.

- (3)Knot the preset thread and the thread being used together to thread the machine.
- (4)Press down the bracket after threading. The looper thread take-up comes back.
- (5)Needle tread Trim the knots off neatly before passing through the eye of the needle to thread.
- (6)Looper thread , Top cover thread Trim the knots off neatly after passing through the eye of the looper.

若机上原来没有线,请参照穿线图正确进行穿线。Be sure to thread the machine correctly by referring to the threading diagram.

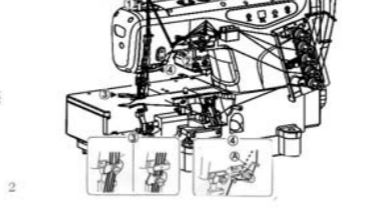


### 穿线图(2针,3针用) Threading diagram

- ①若使用伸线大的线时,为点线A的方向。(通常为实线方向) Broken lines(A) for more stretchable thread.
- ②装饰线太松时用B,用D仍松时仍用C,装饰线太紧时用D If the top cover thread is too loose use broken line(B) If the top cover thread is still too loose after thread with broken line(B) use broken(C) If the top cover thread is too tight use broken line(D).
- ③穿伸线大的线时 穿伸线小的线时 For more stretchable thread For less stretchable thread
- ④穿伸线大的线时用点线A方向 Broken lines(A) for more stretchable thread
- ⑤若使用伸线大的线时,为点线F方向。(通常为实线方向) Broken lines(F) for more stretchable thread.



Solid lines for ordinary thread.



JACK高速绷缝机相关技术参数									
高行程数据									
机型	×□□□	针距	针距	针距	针距	针距	针距	针距	针距行程
W4-010B/020B/050B	356	9.7	3-3.2	9.8	5-5.3	17	6.2	0.8-1.2	33.4
	364	9.3	2.6-2.8	9.4	5-5.3	17	6.2	0.8-1.2	33.4
W4-230B	356	9.7	3-3.2	9.8	5-5.3	17	6.2	0.8-1.2	33.4
W4-230B(L)	256	9.7	3-3.2	9.8	5-5.3	17	6.2	0.8-1.2	33.4
标准行程数据									
机型	×□□□	针距	针距	针距	针距	针距	针距	针距	针距行程
W4-010B/020B/050B	356	8.5	3.2-3.5	8.5	5-5.3	17	6.2	0.8-1.0	30.8
	364	8.1	2.8-3.1	8.5	5-5.3	17	6.2	0.8-1.2	30.8
W4-230B	356	8.1	2.8-3.1	8.5	5-5.3	17	6.2	0.8-1.0	30.8
W4-230B(L)	256	8.1	2.8-3.1	8.5	5-5.3	17	6.2	0.8-1.2	30.8

### 绷缝 W4-D 电控箱操作说明书

#### Instructions of W4-D Interlock sewing machine panel operation

本控制器使用双位数码管显示实现参数调整。在P主界面,第一个数码管显示“P”,第二个数码管显示当前设定的停针位置。上、下停针如图所示(图1)。

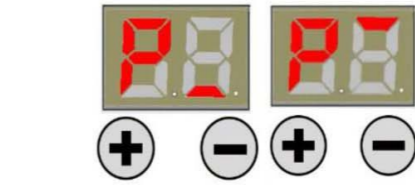


图1 上、下停针显示界面

#### 1.转速的修改 Modify speed

在待机P界面按+键或者-键,显示当前转速,按+键速度递增 100RPM(数值递增1),按-键速度递减 100RPM(数值递减1),长按+键(-键)可实现快速递增(递减),停止按+键或者-键后约3秒,自动保存设定的速度参数,并回退到P界面。

The panel shows “P”. Then press + or - to adjust speed up and down, short-press + or - to adjust speed up 100RPM and down 100RPM, long-press + (-) speed rapidly up (down). After 3 seconds, the parameter saved and the panel back to the “P”.

#### 2.停针位修改 Needle Position Adjust

在P界面下,长按+键约3秒不松开,可以调节上下停针位。

The panel shows “P”, press + for 3 seconds, then set the position up or down.

序号 NO.	参数定义 parameter	范围 range	默认值 Default	参数说明 Description
K	机头灯亮度调节 LED light adjustment	0-3	2	0: 灭 off 1~3: 亮度 1~3 level 1~3
L	缝制限制速 Limited sewing speed	05-55	50	以 500rpm 为单位递减 Decline by 500rpm every time
M	停针位开关 Switch of needle position	0-1	1	0: 关闭 off 1: 开启 on
H	休眠时间 Dormancy time	0-6	3	0: 关闭 off unit: 10min
V	速度显示使能 Speed display	0-1	0	0: 关闭 off 1: 开启 on

在F界面,长按+键3s,进入监控参数,并显示J  
The panel shows “P”, press + for 3 seconds, inter monitoring parameter, and it shows “J”

J1	实时速度 Real-time Speed	显示的数×100=实际速度 the showing number multiples by 100 equal to the real speed.
J2	实时功率 Real-time Power	显示的数×10=实际功率 the showing number multiples by 10 equal to the real power.
J3	输入电压 Input Voltage	显示的数×10=实际电压 the showing number multiples by 10 equal to the real voltage.
J4	历史电压 Historical Voltage	显示历史输入最低电压和最高电压 Display the historical lowest input voltage and highest input voltage.
J5	历史错误代码 Historical Error	显示最新的 5 个错误代码 Display historical error code(only show the latest 5).
J6	累计运行时间 Cumulative Running Time	显示的数×100=实际时间(Hour) the showing number multiples by 100 equal to the real time(hour).

#### 3.恢复出厂设置 Factory reset

在P界面,长按-键3秒,参数将恢复出厂设置。(J4、J5、J6的监控数据除外)

#### 4.操作参数说明表 Parameter description

The panel shows “P”, press - for 3 seconds, the parameter will back to factory setting.

#### 5.错误码说明表 Error code description

错误 Error code	内容 Reasons	对策 Solutions
E1	电机堵转 Motor stuck	请转动手轮检查机头是否卡住或者干涩转动困难: 请检查电机插件是否松动或者脱落; 请检查加工物料是否过厚,电机因扭力不足而无法贯穿; 请检查机器是否缺少润滑油。 The motor run out of load capacity, please reduce the load capacity for the motor and then restart the motor; Please check if the plug of motor loose or drop; Please check if the sewing material is too heavy; Please check if the machine needs lubrication.
E2	软件过流 software over-current	请关机后重新上电,如果不能消除报警,请检查: 电机负荷过大,请减轻负荷后重启电机; Motor used too much, Restart machine after several minutes, then please check if the fabric much too heavy.
E3	参数保存异常 Parameter save abnormal	出现此种状况,需要关闭电源,稍后再打开电源开关即可; 恢复出厂设置(长按-键约3s不松开); 若重启或者恢复出厂设置后也不能解决,建议联系经销商解决。 Restart machine after several minutes or reset machine(press -3s); If the problem unsolved, please contact dealers.
E4	电机霍尔信号异常 Hall of the motor with problem	请检查电机编码器插头连接是否可靠,编码器信号线是否有断线,插针是否退出或者变形。 Please check if the 10core line connect well or not, please check if the connect line of hall is well or not.
E5	定位器信号异常 The synchronizer signal	请检查定位器是否连接电控; 请检查上下定位信号是否正常。 Forget to insert the synchronizer cable before turn on the machine To check the both up needle position signal and the down needle position signal is working.
E6	调速器异常 Speed governor abnormal	请检查压脚机构是否回到正确位置,压脚安全开关是否损坏,插座是否正常。 To check if the presser foot back to the correct position or not, to check if the safety switch button is damaged or not, the outlet is abnormal or not.
E7	电流检测电路故障 Current detection and circuit fault	请检查电路板是否干净清洁; 请检测电源电压是否正常; 请等待电源重新开启/复位(请仔细检查电源板各项功能)。 Please check whether the power voltage is normal; Please wait after restarting the power or reset(please carefully check each function of the power board).
EA	硬件过流 Hardware over-current	请关机后重新上电,请检查供电电压是否正常; 请尝试恢复出厂设置。 Please cut off the power and restart; Please check whether the supply voltage is normal; Please try to restore factory defaults.
Eb	系统过电压 System over-voltage	立即切断电源,并检查供电电压是否过高,如果是,请调整供电电压到额定电压后再开机工作(额定电压: 220V)。 Immediately cut off the power, and check whether the supply voltage is too high, if yes, please adjust the rated voltage, then start to work(rated voltage:220v).
EC	系统欠电压 System under-voltage	请检查供电电压是否正常; 请等待电源重新开启/复位(请仔细检查电源板各项功能)。 Mean the voltage abnormal, please check if the voltage is normal or not; Means waiting for the power, and need to restart again or recover to the factory reset.

### 杰克缝纫机股份有限公司

杰克缝纫机  
全球销量遥遥领先

公司地址:台州市椒江区机场南路十五号  
邮编:318000  
国内销售部:  
电话:0086-0576-8817788 8817789  
传真:0086-0576-8817758  
直营部:  
电话:0086-0576-8817782 8817774  
传真:0086-0576-8817787  
免费售后服务电话:400-8876858  
http://www.chinajack.com



www.chinajack.com

2017.7

资料如有更改,恕不另行通知,以实物为准。