

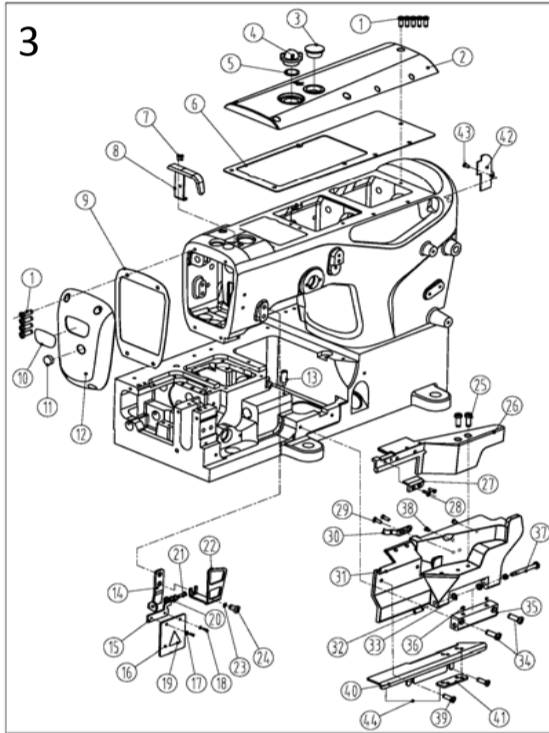
二、车壳部件 (Frame assemblies)

序号Ref.No	公司件号 Part No	参考件号 Ref. Part. no	名称	Description	数量 Number
1	30122006	240052	油封	plug	2
2	21022007	206590	油封	plug	1
3	21012018		油封垫	washer	1
4	20622019		油封	plug	1
5	30122008		油封	plug	1
6	P01001		销A5×13	pin	2
7	30122006	240052	油堵	plug	4
8	H01001	240001	挡圈	ring	3
9	30112001	255002	滤油网	filter	3
10	30122008	208173	油封	plug	2
11	301s30001	250117	机壳螺钉	shoulder pin	4
12	30112002	250049	盖板	cover	1
13	s01002	7017	螺钉M4x6.5	screw	1
14	10128021		拼装销	pin	2
15	30111001	206590	油标	oil level gauge	1
16	s01002	7017	螺钉M4x6.5	screw	1
17	30137001	250233	机壳型牌	sticker	1
18	R03001	210679	铆钉 2.5×4	pin	2
19	W02003		垫圈 10	washer	4
20	S05001		螺钉 M10×27.5	screw	4
21	001001		O型圈 15×2.65	o ring	1
22	301s11024		滑块导座螺钉	screw	3
23	L02001	7084	螺钉 M4×8	screw	5
24	30101005	250003	下节右盖	top cover (right)	1
25	30122003	250004	下节右盖垫	gasket	1
26	30122002	250020	下节左盖垫	gasket	1
27	30101004	250069	下节左盖	top cover plate (left)	1
28	100905		机壳上节	chassis	1
29	100906		机壳下节	casing under section	1

42	31122003		卡线片	card line piece	1
43	s01002		螺钉	screw	1
44	302525		加宽前门板接板组件	front coverasy	1

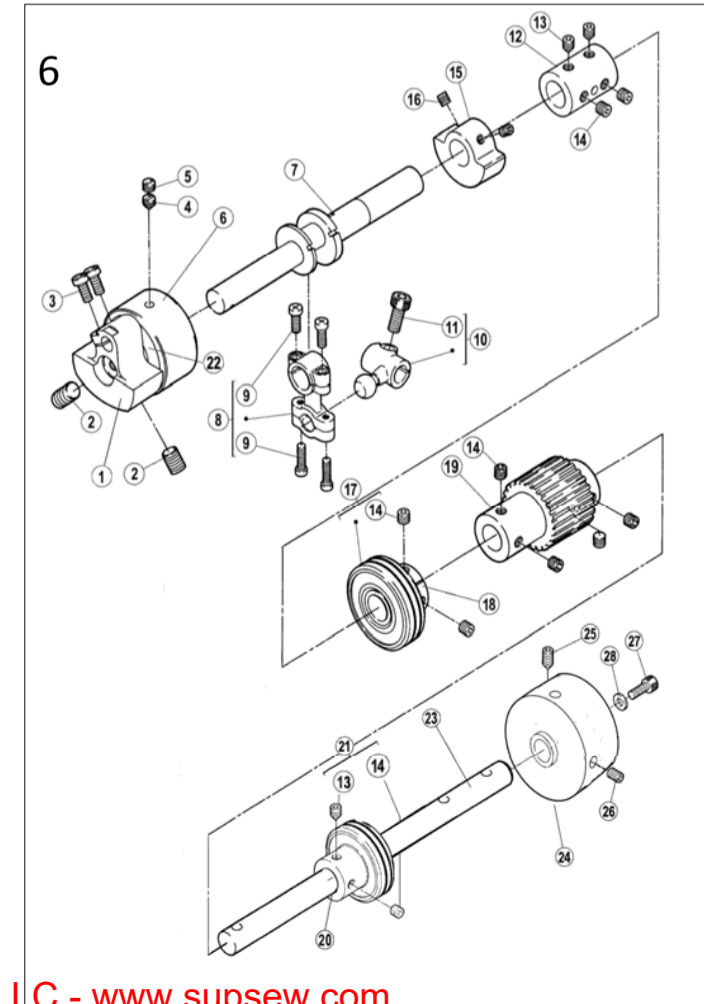
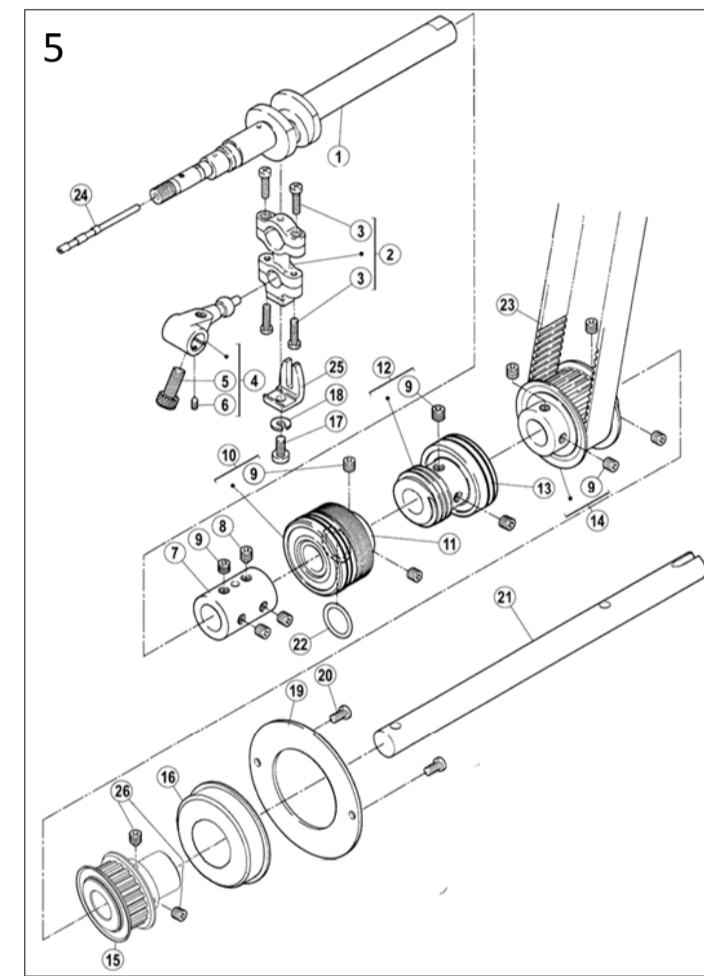
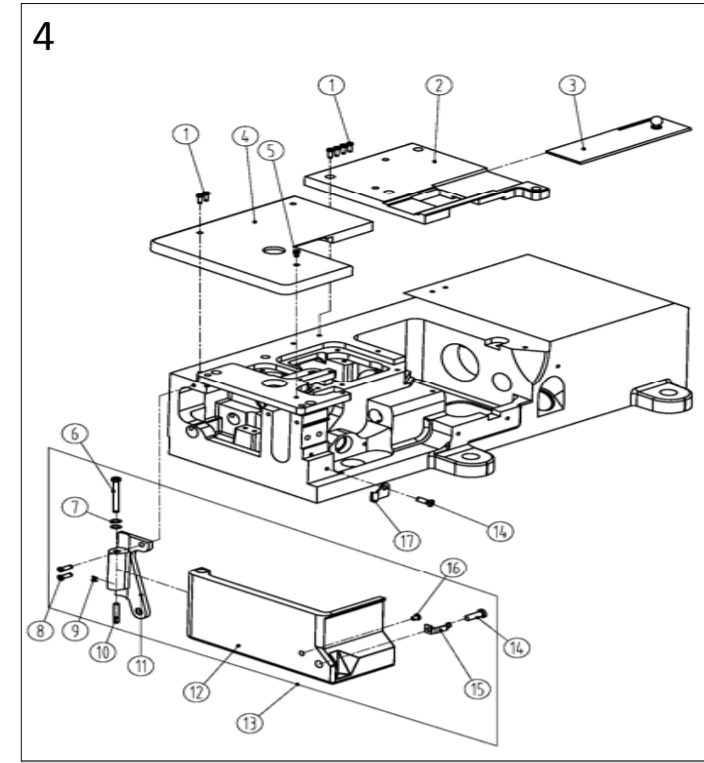
一、套筒部件 (Bushing assemblies)

序号Ref.No	公司件号 Part No	参考件号 Ref. Part. no	名称	Description	数量 Number
1	31003002		拍压轴套筒	sleeve	1
2	30103106	210297	过线座轴套筒	sleeve	2
3	20103047	250141	送布轴套	sleeve	2
4	30203004	250146	针杆上套	sleeve	1
5	30203005	251003	针杆下套	sleeve	1
6	30203024	250147	压脚轴套	sleeve	1
7	30203025	250136	喂针轴套	sleeve	1
8	20622019		油封	plug	1
9	30122039		油封	plug	1
10	30103105		前弯针轴后套筒	bushing	3
11	30103021	250135	弯针轴前后套筒	plug	1
12	30103010		主轴套筒	bushing	1
13	30103019		护针轴前套筒	bushing	1
14	30221016	255020	铜油管	pipe	1
15	P03005		销 4×8	pin	1
16	100906	250215-2	机壳	machine frame	1



三、罩壳部件 (Cover assemblies)

序号Ref.No	公司件号 Part No	参考件号 Ref. Part. no	名称	Description	数量 Number
1	s04060	7021	螺钉M4×10	screw	9
2	303600		上盖(喷漆)	arm cover(top)	1
3	30122005		油封	plug	1
4	20711055		油窗	Oil Sight Window	1
5	21022003		油窗垫	o ring	1
6	31022010		上盖密封垫	The head gasket	1
7	207S11007		螺钉	screw	2
8	31112010		针杆护罩	needle bar cover	1
9	31022006		机头左盖密封垫	o ring	1
10	13837002		商标牌	plug	1
11	10122003		油封	plug	1
12	303599		机头左盖(喷漆)	arm cover(rear)	1
13	301S30002	7089	左侧盖黄螺钉	screw	1
14	31012042		玻璃罩安装板	glass plate	1
15	31012029		护罩架	shield	1
16	30111003	250257	有机玻璃罩	eye guard	1
17	W01002	202875	垫圈	sticker	2
18	s01006	7009	螺钉M3x4.5	screw	2
19	20131063		护罩警示牌	sticker	1
20	W03001	210307	波形垫圈	washer	2
21	301S20001		螺钉	screw	1
22	31012012		过线护罩	threon takeup cover	1
23	W02004	303335	垫圈6	sticker	1
24	s01060	7052	护罩螺钉	screw	8
25	s01011		螺钉M5x10	screw	2
26	31101005		前罩缝台盖	front cover	1
27	30209018		针板座接块	block	1
28	s01006	7009	螺钉M3x4.5	screw	2
29	s01002	7017	螺钉M4x6.5	screw	2
30	30127001	250051	前罩簧	flat spring	1
31	31101006		前罩缝台	arm cover	1
32	301s20003	250014	前罩缝台螺钉	pin	1
33	30128002	201191	弹簧垫圈	spring	3
34	s01007	7023	螺钉M4x13.5	screw	2
35	30101063		前罩缝台座	bracket	1
36	s10006	4539	螺钉M5x6	screw	2
37	301s20002	250013	前罩缝台座螺钉	screw	1
38	30122015		前罩防震垫	cushion	2
39	s01065	7079	螺钉M5x6	screw	2
40	30112097		加宽前门板接板	block	1
41	30112098		加宽前门板接板垫	base plate	1



四、缝台部件 (Cloth plate assemblies)

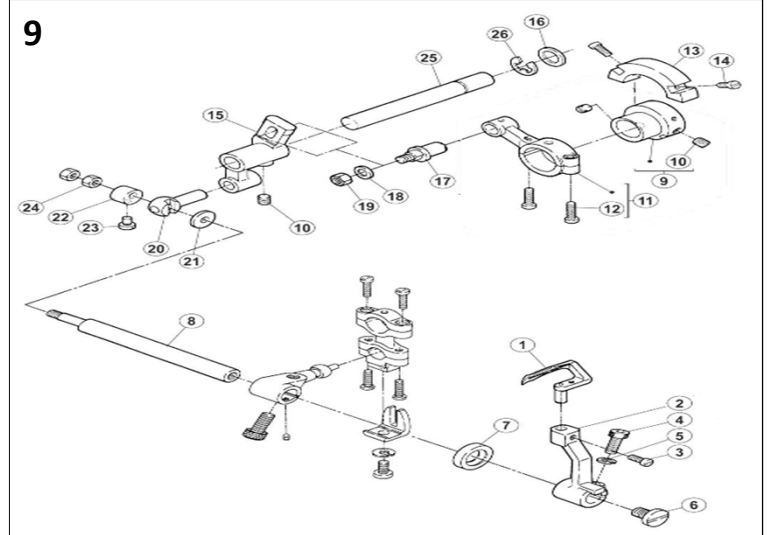
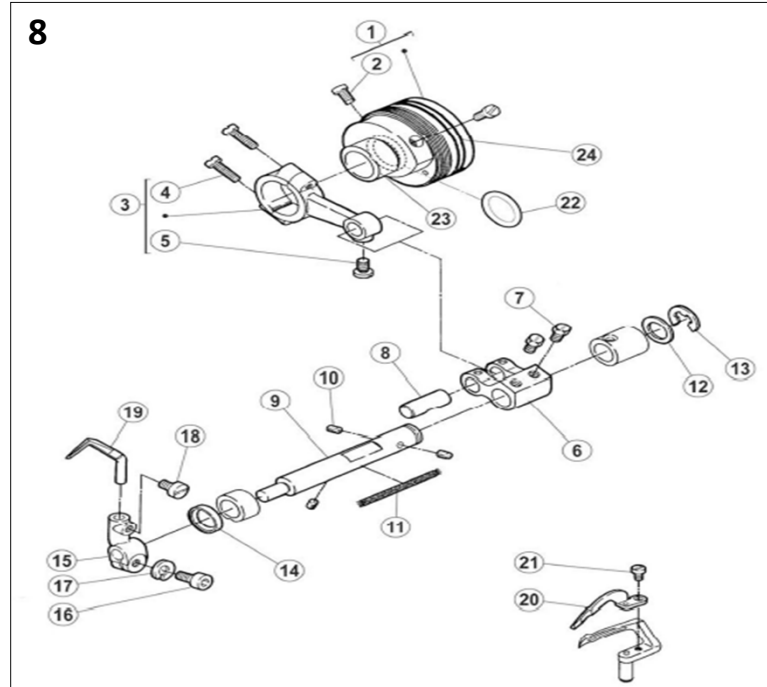
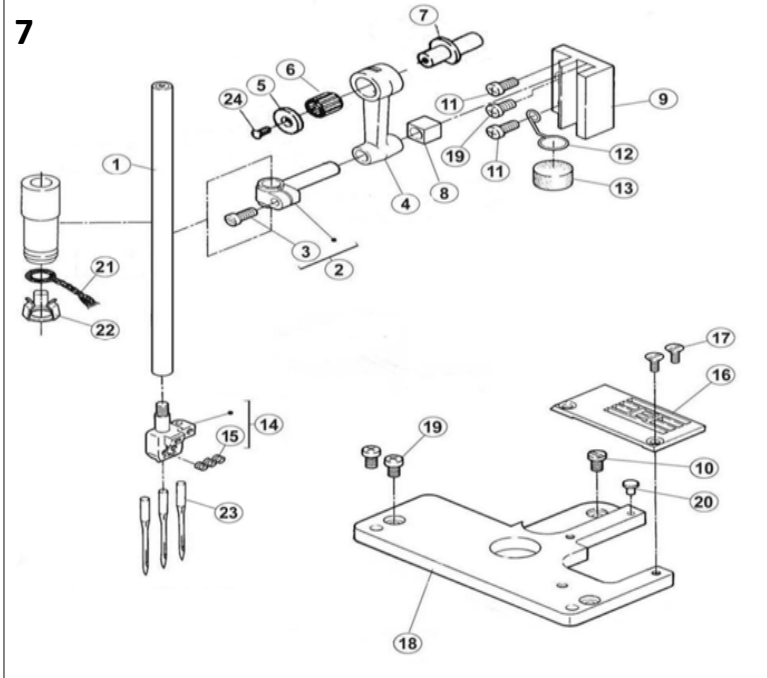
序号 Ref.No	公司件号 Part No	参考件号 Ref. Part. no	名称	Description	数量 Number
1	s01003	7021	螺钉 M4×12	screw	6
2	300137	250074-ASD	右缝台盖(喷漆)	bed cover(right)	1
3	30115001	250071-91	推板	cover	1
4	300139	250052-BSD	左缝台盖(喷漆)	bed cover(left)	1
5	s02001	7043	螺钉 M4×6	screw	1
6	301s20004		侧盖合扇销钉	screw	1
7	30128002	201191	弹簧垫圈	spring	2
8	s01005	7020	螺钉 M4×10	screw	4
9	s10001		螺钉M3x4	screw	2
10	301s20005		销螺钉	pin	1
11	30101112		侧盖合扇	cover	1
12	30101111		侧盖	side cover	1
13	300952		侧盖组件(喷漆)	side coverassy	1
14	s01002	7017	螺钉M4x6.5	screw	1
15	30127030		侧前锁簧	flat spring	1
16	30122015		前罩防震垫	cushion	1
17	30112095		侧前锁簧舌	flat spring	1

五、下轴部件 (Hook shaft assemblies)

序号 Ref.No	公司件号 Part No	参考件号 Ref. Part. no	名称	Description	数量 Number
1	400068	250501B-91	下轴	crankshaft assy	1
2	400060	2505009-92	连杆组件	connection assy	1
3	201S20015	7015	螺钉 M3.5×13	screw	4
4	30104002	252008	下轴曲柄	crank	1
5	S05002	4534	螺钉 M6×0.75×	screw	1
6	S12002	4545	螺钉 M3×4	screw	1
7	30103004	250506	接轴套	joint	1
8	S12003	4555	螺钉 M6×7	screw	1
9	S10029	4547	螺钉 M6×0.75×5	screw	11
10	3012400300	250508-91	油封轴承	bearing	1
11	30103006	250508	中轴套	bushing	1
12	30103008	250543	柄杆	bushing	1
13	3012400400		油封轴承	bearing	1
14	30125006	250511-1	下轴同步带轮	gear(lower)	1
15	30125005	250530	小同步带轮2	small gear2	1
16	B01003	250504-91	轴承 6304Z	bearing	1
17	301S11004	4019	比叉螺钉	screw	1
18	W02001	202286	M5 弹垫	washer	1
19	30108001	250514	轴承挡圈	cover	1
20	S01004	7019	螺钉 M4×7.8	screw	2
21	30102066	250507	下后轴	shaft	1
22	001001	206837	O型圈 15×2.65	o ring	1
23	30135002	206050C	同步带	timing belt	1
24	30126001	250525	调节销	adjusting bar	1
25	30109001	201074	比叉	guide	1

六、上轴部件 (Main shaft assemblies)

序号 Ref.No	公司件号 Part No	参考件号 Ref. Part. no	名称	Description	数量 Number
1	400307	250526B92	针杆曲柄	motion assy	1
2	S10004	4592	螺钉 M8×1×12	screw	1
3	S01011	7028	螺钉 M5×10	screw	2
5	S11001	7152	螺钉 M6×0.75×6	screw	1
6	30103015	250526	轴承套	bushing	1
7	400065	250517A	上前轴	crankshaft	1
8	400061	253500-92	连杆组件	connection assy	1
9	201S20015	7021	铜连杆螺丝	screw	4
10	30104006	253501A	弯针曲柄	crank assy	1
11	S05002	4534	螺钉 M6×0.75×	screw	1
12	30103004	250506	接轴套	joint	1
13	S12003	4555	螺钉 M6×0.75×7	screw	3
14	S10029	4547	螺钉 M6×0.75×5	screw	9
15	30109003	250524	上轴平衡块	balance weight	1
16	S10002	4514	螺钉 M5×5	screw	2
17	3012400400	250529-91	油封轴承	bushing	1
18	30103012	250529	轴承套	bushing	1
19	30125002	250521	上轴同步带轮	gear(upper)	1
20	30103014	250528	轴承套	bushing	1
21	3012400400	250529-91	油封轴承	bearing	1
22	B01005		轴承 6203	bearing	2
23	30202004		后轴	shaft	1
24	31035002		手轮	pulley	1
25	S12001	4556	尖端固定螺钉 M6×8	screw	1
26	S10009	4541	螺钉 M6×8	screw	1
27	S05004	4501	螺钉 M5×14	screw	1
28	W01004	204585	M5普通垫片	washer	1



九、弯针部件(Looper assemblies)

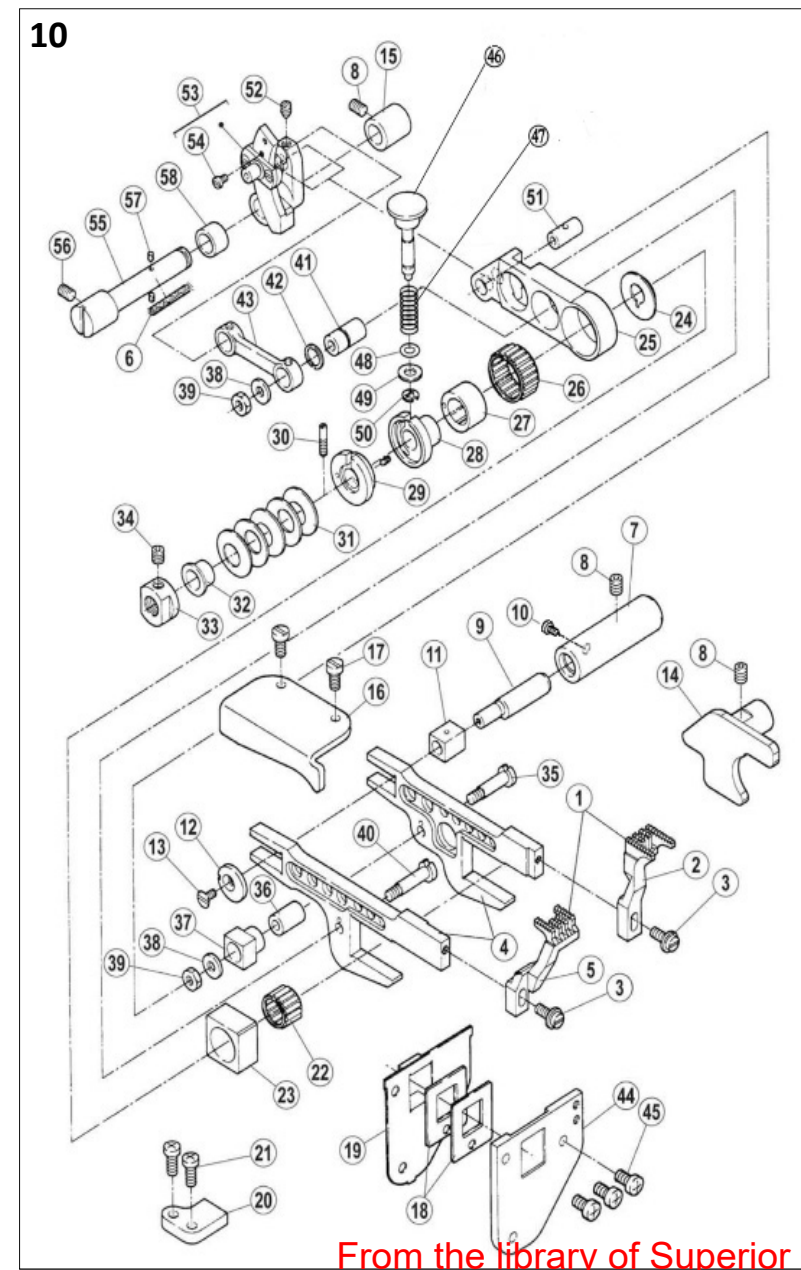
序号Ref.No	公司件号 Part No	参考件号 Ref. Part. no	名称	Description	数量 Number
1	3011700900	257550-91	弯针架	looper	1
2	30104012	252007	弯针架	looper holder Assy	1
3	S01004	7019	螺钉 M4×7.8	screw	1
4	S05004	4501	螺钉 M5×14	screw	1
5	W02001	303067	M5 弹垫	spring washer	1
6	S01014	7085	螺钉 M6×0.75×9.6	screw	1
7	20622019		油封	oil seal	1
8	30102014	252006	弯针架轴	shaft	1
9	30110005	252000	摆架偏心轮	eccentric Assy	1
10	S10006	4539	螺钉 M5×6	screw	3
11	400063	252001-92	连杆组件	connection Assy	1
12	S01039	7015	螺钉 M4×15	screw	2
13	30109007	252010	平衡块	balance weight	1
14	S01009	7011	螺钉 M3×7.5	screw	2
15	30104010	252002	弯针摆动架	crank	1
16	30128008	240102	摆架轴垫圈	washer	1
17	30102013	179399-05	连杆轴	pin	1
18	30128032	240062	垫片	washer	1
19	N01004	4805	螺母 M5	nut	1
20	30102015	252003	摆轴轧头	block pin	1
21	30128010	208028	垫圈	washer	1
22	30108002	208029	偏心挡圈	collar	1
23	301S12001	5084	曲柄螺钉	screw	1
24	N01001	4802	螺母 M4	nut	2
25	30102012	252004	摆架轴	shaft	1
26	H05001	205061	挡圈 10	ring	1

七、针杆部件(Needle bar assemblies)

序号Ref.No	公司件号 Part No	参考件号 Ref. Part. no	名称	Description	数量 Number
1	30102008	251000-91	针杆	needle bar	1
2	30102009	206061	针杆轧头	needle bar pin	1
3	301S11005	5325	针杆头螺钉	screw	1
4	30105005	206052	针杆连杆	link/needle bar drive	1
5	30128030	205097	偏心轴垫	washer	1
6	B07001	240098	轴承 8×12×12	needle bearing	1
7	30102050	251010A	连杆偏心轴	eccentric pin	1
8	30109004	206063	针杆滑块	block	1
9	30109005	206062	滑块导座	guide block/needle bar	1
10	301S11024	7082	滑块导座螺钉	screw	1
11	S01003	7021	螺钉 M4×12	screw	2
12	30127003	251009	毛毡弹簧	spring	1
13	30123002	179040-05	毛毡	felt	1
14	30134001	257518-56	356针舌	needle holder	1
15	S10026	4554	螺钉 M3×3	screw	3
16	30115002		356针板	needle plate	1
17	301S17001	5373-HC	针板螺钉	screw	2
18	30109006	251007	针板座	bracket	1
19	S01004	7019	螺钉 M4×7.8	screw	3
20	30122018	240123	防振垫	cushion rubber	1
21	30123014	202176	油线	oil wick	1
22	30112009	206524	油线托	oil wick retainer	1
23	30117001		机针	needle	3
24	S02007		螺钉M3×5	screw	1

八、护针部件(Needle guard assemblies)

序号Ref.No	公司件号 Part No	参考件号 Ref. Part. no	名称	Description	数量 Number
1	B01001		轴承 6004Z	bearing	1
2	S10028	4539	螺钉 M5×6	screw	2
3	400062	255501-92	连杆组件	connection Assy	1
4	S01039	7015	螺钉 M4×15	screw	2
5	301S11024	7082	滑块导座螺钉	screw	1
6	30104007	306093	弯针曲柄	crank	1
7	301S12001	5084	曲柄螺钉	screw	2
8	30126003	205495	曲柄销	pin	1
9	30102011	251518	护针轴	shaft	1
10	30123001	206748	毛毡	felt	3
11	30123014	202176	油线	oil wick	1
12	30128008	240102	护针轴垫圈	washer	1
13	H05001	205061	挡圈 10	ring	1
14	30122019	204052A	油封	oil seal	1
15	30104009	251519	护针挡架	lever Assy	1
16	S05003	4500	螺钉M5×10	screw	1
17	W02001	303067	M5 弹垫	washer	1
18	S01002	7017	螺钉 M4×6.5	screw	1
19	30117002	257551B	后护针挡	needle guard (rear)	1
20	30117003	257553	前护针挡	needle guard (front)	1
21	S01012	7031	螺钉 M2.5×4	screw	1
22	001001		O型圈15×2.65	oring	1
23	30110002	251517	偏心凸轮	eccentric	1
24	30122017		轴承槽油封	oil seal	2

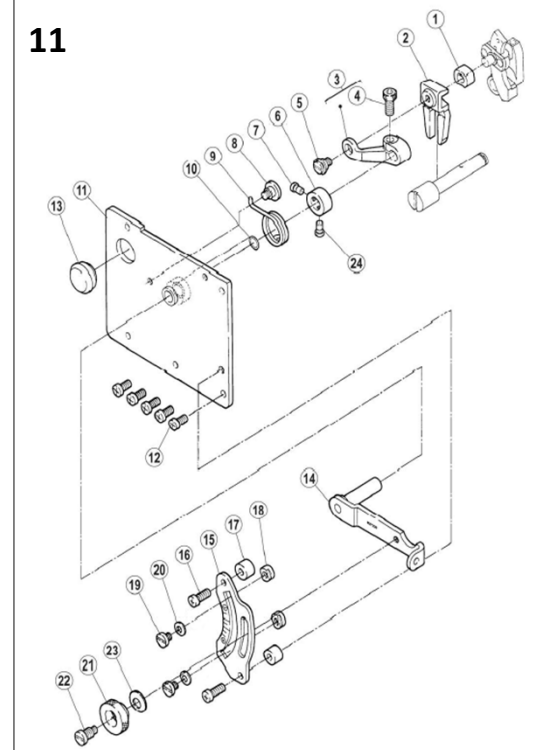


十、牙架部件(Feed dog holder assemblies)

序号Ref.No	公司件号 Part No	参考件号 Ref. Part. no	名称	Description	数量 Number
1	3011400700	257259-16F	差动送布牙组件	main feed dog assembly	1
2	30114001		356、364送布牙	main feed dog	1
3	301S30003	5590	差动送布牙螺钉	screw	2
4	400066	252500-91	差动送布牙架组件	main feed bar assembly	1
5	30114002	356、364差动牙	差动送布牙架	differential feed dog	1
6	20123021	202175	油线	oil wick	1
7	30103022	204129A	套筒	bushing	1
8	S10006	4539	螺钉 M5×6	screw	3
9	30102016	204128A	偏心轴	eccentric pin	1
10	301S12001	5084	曲柄螺钉	screw	1
11	30109008	205857	滑块	block/feed bar guide	1
12	30128011	204439A	偏心垫	washer	1
13	301S17002	5317	偏心轴螺钉	screw	1
14	30109009	252504	牙架挡板	guide(right)	1
15	30103031	206571	差动轴后套筒	bushing	1
16	30109010	252507	左挡板	guide(left)	1
17	L02003	7019	螺栓 M4×7	screw	2
18	30122020	206133	牙架油封	oilshield	2
19	30109011	252509	油封挡板	cover	1
20	30109012	252508	挡板	guide(lower)	1
21	S01005	7020	螺钉 M4×10	screw	2
22	B07002	206128	轴承 12×15×10	needle bearing	1
23	30109013	252519	抬牙滑块	block	1
24	30108003	252520	轴承挡圈	washer	1
25	30104013	206562	差动送布架	link/main feed	1
26	B07003	206125	轴承 17×21×10	needle bearing	1
27	30103023	252521	偏心轴承套	eccentric	1
28	30103024	252522	送布调节器	regulator	1
29	3010306500	252523-91	调节器套组	eccentric retainer	1
30	301S30004	252516	调节器螺钉	screw	1
31	30128012	240125	碟形垫圈	spring	5
32	30103026	252525	垫圈套	spacer	1
33	301S16001	252543	调节螺母	nut	1
34	S10002	4514	螺钉 M5×5	screw	1
35	301S30005	206120	牙架螺钉	screw	1
36	30103027	206119	差动牙架套	bushing	1
37	30109014	206563	送布滑块	guide block	1
38	30128013	200098	垫片	washer	2
39	201S16003		N03 螺母	nut	2
40	301S30006	206123	差动牙架螺钉	screw	1
41	30103028	206566	差动送布牙套	bushing	1
42	30129001	206565	开口挡圈	ring	1
43	30105010	206564	差动送布连杆	link/differential feed	1
44	30109015	251520	牙架挡板	bracket	1
45	S01004	7019	螺钉 M4×7.8	screw	3
46	30102017	252526	针距调节按钮	pin	1
47	30127004	240122	针距调节簧	spring	1
48	001004	206366	O型圈 4×1.8	o ring	1
49	30128032	204585	垫圈	washer	1
50	H05002	200555	挡圈 5	ring	1
51	30103029	206569	差动送布架套	pin	1
52	S12005	4546	螺钉 M4×4	screw	1
53	3010401500	252527-91	差动调整架组件	crank	1
54	S01012	7031	螺钉 M2.5×4	screw	1
55	30102018	252510	差动轴	shaft	1
56	S10002	4514	螺钉 M5×5	screw	1
57	30123008	207925	喂针轴油孔毛毡	felt	2
58	30103030	240119	差动轴前套筒	spacer	1
59	30126016		针距调节按钮	pin	1
60	30127026		针距调节簧	spring	1

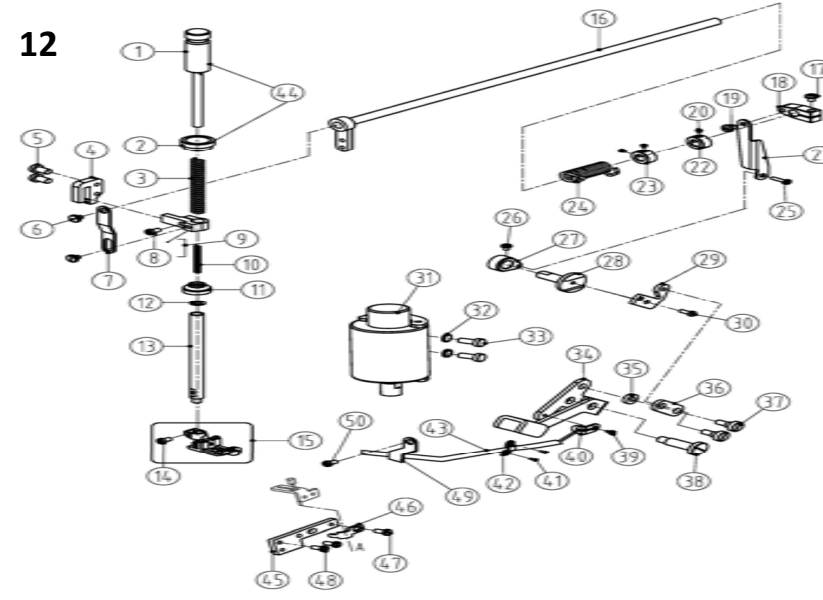
十二、压脚部件(Presser form assemblies)

序号Ref.No	公司件号 Part No	参考件号 Ref. Part. no	名称	Description	数量 Number
1	310S30002	253000-91	调压螺杆	adjusting bar	1
2	301S16005	253003	调压母	nut	1
3	30227008	240252	调压簧	spring	1
4	3010901700	253005-91	导块销簧组件	guide	1
5	S11025	7025	螺钉M4×20	screw	2
6	301S20007	5386	螺钉	screw	2
7	30112016	206157	压脚轧头连接板	link	1
8	301S11009		螺钉M4×12	screw	1
9	30104017	206139	压脚轧头	presser bar clamp	1
10	30227009	240253	压脚轴小弹簧	spring	1
11	30122023		橡皮塞	oil guard.	1
12	001006	240095	O型圈8.5×1.8	o ring	1
13	30202017	240095	压脚轴	presser shaft	1
14	301S11010	1170-3	螺钉	screw	1
15	3011601300		356压脚 (01)	presser foot Assy	1
	3011601400		364压脚 (01)	presser foot Assy	1
	30116005		356压脚 (02)	presser foot Assy	1
	30116006		364压脚 (02)	presser foot Assy	1
	30216005		356压脚 (35AC)	presser foot Assy	1
	30216008		364压脚 (35AC)	presser foot Assy	1
16	3010206400	253010	抬压轴曲柄组件	shaft	1
17	301S11011	5187	抬压曲柄螺钉	screw	1
18	30104019	206149	抬压曲柄I	bell crank(upper)	1
19	301S20008	5184	螺钉	screw	1
20	301S12001	5084	螺钉	screw	3
21	30112018	253011	抬压曲柄连接板	link	1
22	30108006	192024	挡圈	ring	1
23	30108005	206156	挡圈	ring	1
24	30127009	253010	抬压簧	spring	1
25	301S20008	5184	螺钉	screw	1
26	301S20013	002022-4	抬压曲柄I固定螺钉	screw	1
27	30104020	206148	抬压曲柄II	bell crank(lower)	1
28	30102008		抬压轴	shaft	1



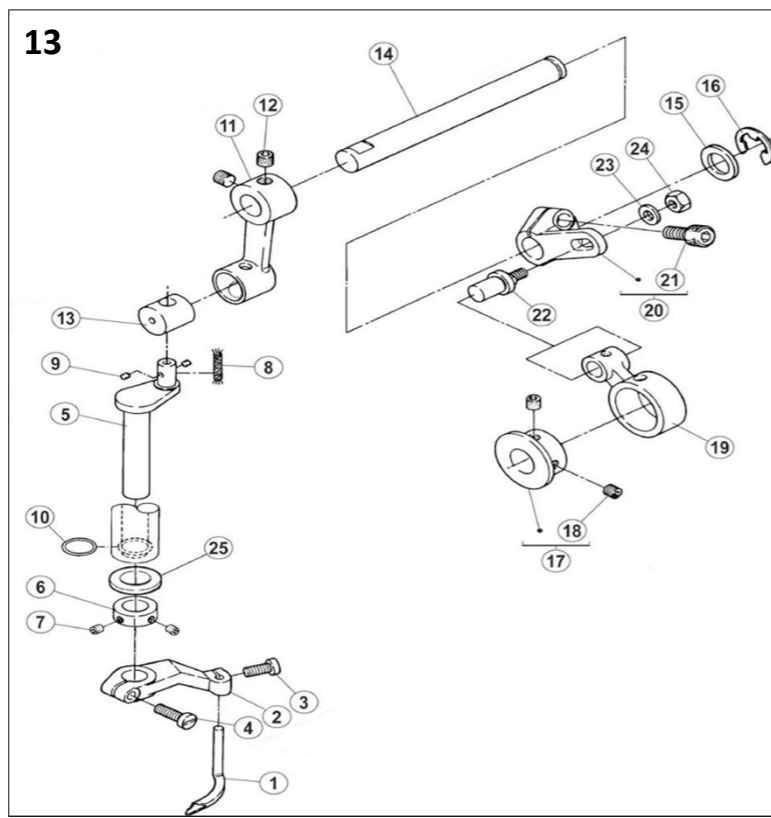
十一、差动部件(Differential assemblies)

序号Ref.No	公司件号 Part No	参考件号 Ref. Part. no	名称	Description	数量 Number
1	30103032	252531	方套	block	1
2	30109016	252532	比叉	guide/block	1
3	30105012	252533	连杆	lever	1
4	S05005	4531	螺钉 M5×12	screw	1
5	301S20006	5316	连杆连接螺钉	screw	1
6	30108004	240271	挡圈	ring	1
7	301S11007	35827	挡圈螺钉	screw	1
8	301S20001	7066	护罩座固定螺钉	screw	1
9	30127005	252536	弹簧	spring	1
10	001005	240129	O型圈 7.5×1.8	o ring	1
11	3011201100	252539A91	左板组件	bracket	1
12	S01004	7019	螺钉 M4×7.8	screw	5
13	30122021	240162	油封堵	plug	1
14	3011201300	252664-91	调节扳手组件	lever Assy	1
15	30112015	252538	调节板	scale plate	1
16	S01003	7021	螺钉 M4×12	screw	2
17	30203019	240124	调节套	spacer	2
18	20109005	210171	调节滑块	stopper	2
19	301S11008	2905	螺钉	screw	2
20	W01006	201185	垫圈 4	washer	2
21	301S16004	210167	螺母	nut	1
22	301S30007	5486	调节扳手螺钉	screw	1
23	30128014	211301	垫圈	washer	1
24	301S11023		挡圈螺钉(短)	screw	1



29	30102075		抬压板	lever	1
30	S01011		螺钉	screw	1
31	3.1003E+10		电磁铁组件	solenoid	1
32	W02004		垫圈	washer	2
33	S05019				

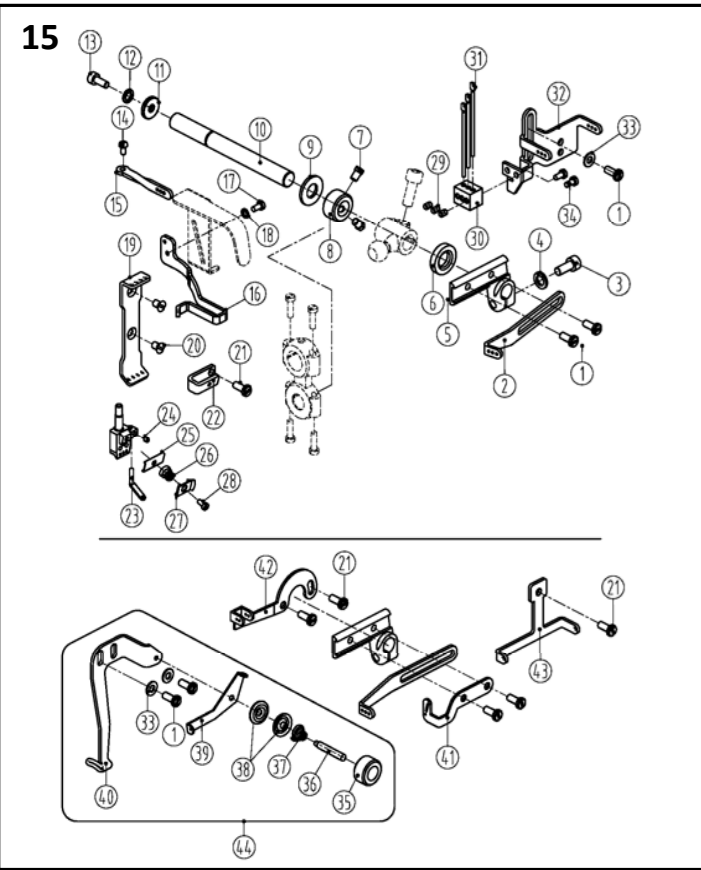
13



十三、喂针部件(Needle feeding assemblies)

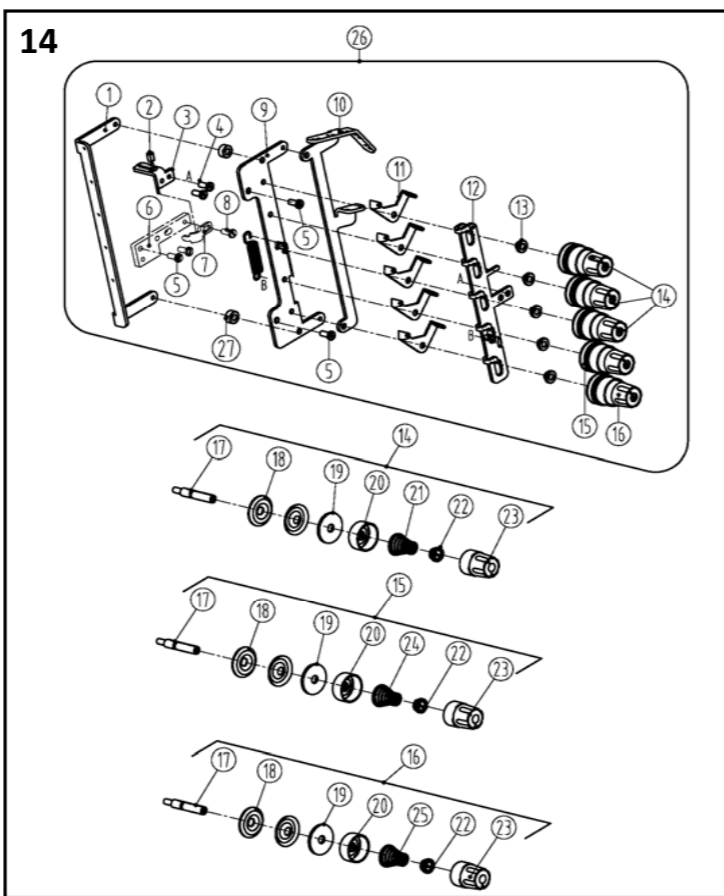
序号Ref. No	公司件号 Part No	参考件号 Ref. Part. no	名称	Description	数量 Number
1	30117005	257565	喂针	spreader	1
2	30104022	254516	喂针架	lever/assy	1
3	S01005	7020	螺钉 M4×10	screw	1
4	S01017	7022	螺钉 M4×14	screw	1
5	30102023	254508	摆动轴	crankshaft	1
6	20108006	212039	挡圈	collar	1
7	S10005	S071	挡圈螺钉M3×3	screw	2
8	20123021	202176	油线	oil wick	1
9	30123008	207925	摆动轴油孔毛毡	felt	2
10	001008	233020	O型圈 9×1.8	O ring	1
11	30105013	254506	喂针摆动连杆	crank	1
12	S10029	4547	螺钉 M6×0.75×5	screw	2
13	30126005	254507	喂针摆动销	block	1
14	30102024	254519	摆动连杆轴	shaft	1
15	30128015	206180	摆动连杆轴垫圈	washer	1
16	H05004	306671	挡圈12	ring	1
17	30110007	254501A	喂针凸轮	eccentric assy	1
18	S10002	4514	螺钉 M5×5	screw	2
19	400059	254511	喂针连杆	connection	1
20	30104024	254503	喂针摆动曲柄	crank	1
21	S05002	4534	螺钉 M6×0.75×15.2	screw	1
22	30126006	254504	连杆销	screw	1
23	30128032	240062	垫圈	washer	1
24	N01004	4805	螺母 M5	nut	1
25	30128018		垫圈	washer	1

15



35	302S16005		调压螺母	adjusting nut	1
36	301S30055		调线螺钉	adjusting screw	1
37	30127016	137109	夹线簧	spring	1
38	20112033	137108	夹线片	thread retainer	2
39	30112032	253547	喂针二眼过线	thread guide	1
40	31112008	253548	喂针过线板	thread guide	1
41	31012018		过线板	thread guide	1
42	30112029	253514	喂针过线	thread guide	1
43	31013011	253515	过线板	thread guide	1
44	3111200800		喂针过线组件	thread guide	1

14



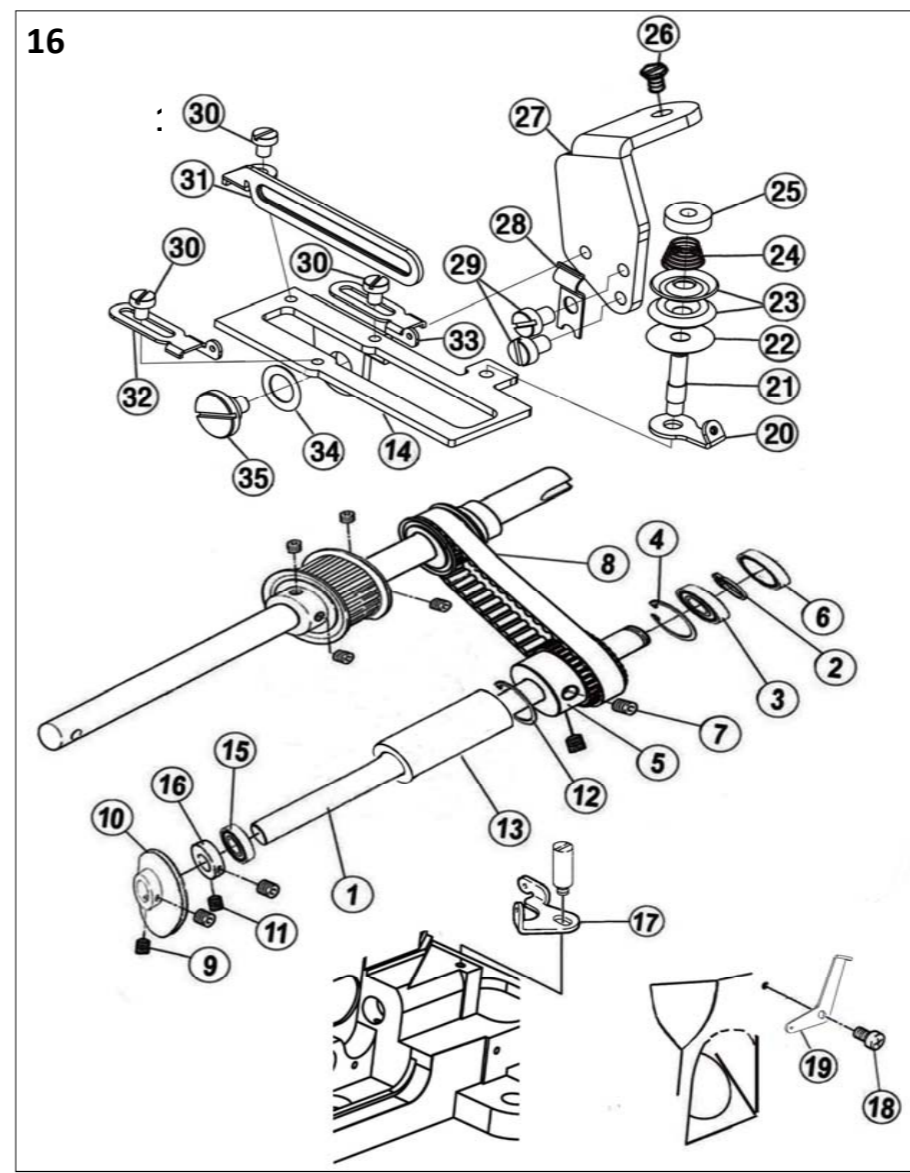
十四、松线部件(Thread loosing assemblies)

序号Ref. No	公司件号 Part No	参考件号 Ref. Part. no	名称	Description	数量 Number
1	31013010		松线架	Loose thread stand	1
2	3102200200		松线钢丝轴		1
3	31012048		松线拉板	Loose line board	1
4	S04010		螺钉	screw	2
5	S01004		螺钉	screw	4
6	31012044		钢丝支撑板		1
7	31012025		钢丝绳压板	Wire rope clamp	1
8	S01005		螺钉	screw	1
9	31013007		过线架	Loose line board	1
10	31013016		陶瓷过线管	The ceramic tube thread	5
11	30113007		二孔过线板	thread guide	5
12	31013022		松线板	Loose line board	1
13	30103041	206202	调节套	spacer	5
14	3011300400	254010A9U	调线组件(弱)	tension spring assembly(light)	3
15	3011300500	254010B9U	调线组件(中)	tension spring assembly	1
16	3011300600	254010C9U	调线组件(强)	tension spring assembly(light)	1
17	301S30010	001817-2A	夹线延	screw stud	1
18	30128016	210319	夹线片	tension disc	2
19	30123027		松线夹线片垫	felt	1
20	30111005	208450-UA	调压止动盖	cup	1
21	30127011	301037	调压簧(强)	spring(heavy)	3
22	30111006	208448	调压止动套	ratchet	1
23	301S16006	208447-UA	调压螺母	nut	1
24	30127012	201086	调压簧(中)	spring(medium)	1
25	30127013	201068	调压簧(弱)	spring(light)	1
26	3101300700	201068	夹线器	tension	1
27	31009004		松线垫块	block	1

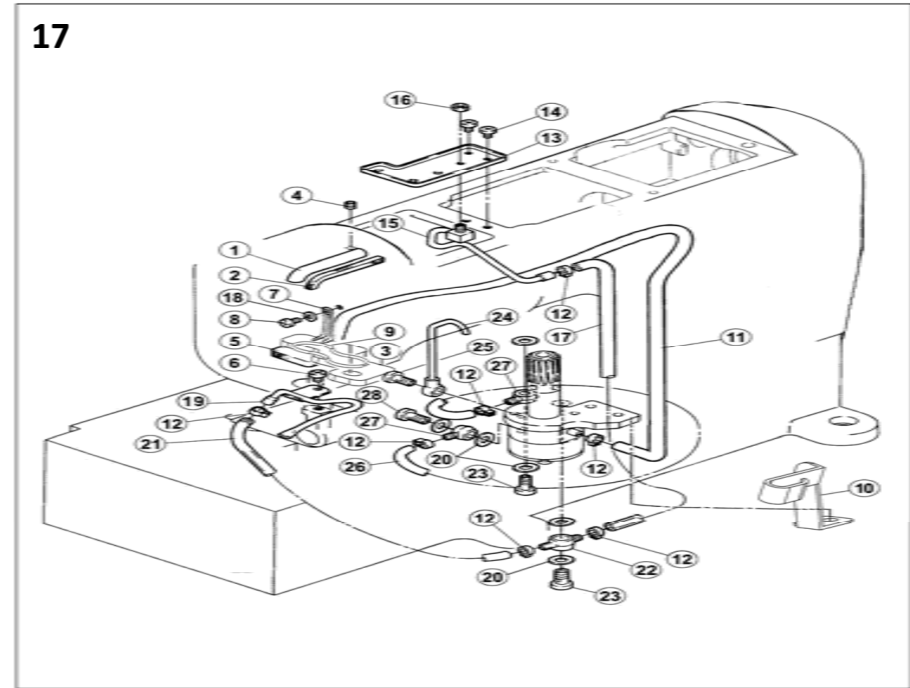
十五、过线部件(Thread loosing assemblies)

序号Ref. No	公司件号 Part No	参考件号 Ref. Part. no	名称	Description	数量 Number
1	S01004	7019	螺钉M4x7.8	screw	5
2	31013006	253505A	长过线板	thread take-up	1
3	S05004	4501	螺钉M5x14	screw	1
4	W02001	303067	垫圈	washer	1
5	30101018	253504	过线座	lever	1
6	20622019		油封	plug	1
7	301S12001	5084	曲柄螺钉	screw	2
8	30108005	240201	挡圈	ring	1
9	30128008		摆架轴垫圈	washer	1
10	31002001	253503	过线座轴(中轴)	shaft	1
11	30128019	204107	垫片	washer	1
12	W02002	201252	M4垫圈	washer	1
13	S05048	4527	螺钉M4x10	screw	1
14	S01027	7009	螺钉M3x6	screw	1
15	31013017	253507	三孔过线	thread guide	1
16	31112009		护线罩	thread support	1
17	S01006		螺钉	screw	1
18	30128034		垫圈	washer	1
19	31013005		过线板	thread guide	1
20	206S30016	7170	螺钉	screw	2
21	S01004	7018	螺钉M4x7.8	screw	4
22	31012045		U型夹线座	thread tension bracket	1
23	30112033	253511	喂针小过线	thread guide	1
24	S10026	4554	螺钉M3x3	screw	1
25	30112025	234561	夹线板	thread guide	1
26	30127014	253517	调压簧	spring	1
27	30112026	253593	压线板	tension disc	1
28	301S20009	OW09070-2	调线螺钉	screw	1
29	S10001	4535	螺钉M3x4	screw	3
30	30113012	253545	针杆过线板	holder	1
31	30113013	234521	过线杆	thread guide	3
32	30112027	253544	硅油合固定架	thread guide	1
33	W01001	303448	M4垫圈片	washer	1
34	S01006	7009	螺钉M3x4.5	screw	2

16



17



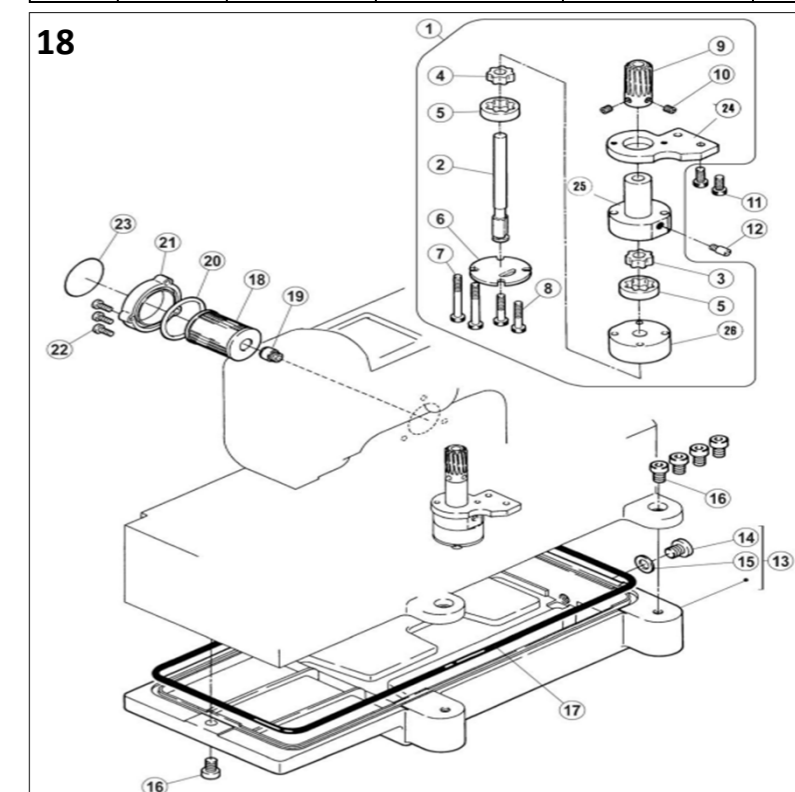
十七、润滑部件(Lubrication assemblies)

序号Ref. No	公司件号 Part No	参考件号 Ref. Part. no	名称	Description	数量 Number
1	30121012	255003	铜油管	oil pipe	1
2	30123010	240136	油毡	felt	1
3	30123025		针杆毛毡	felt	1
4	S10002	4514	螺钉 M5×5	screw	1
5	30123009	255021	油毡	felt	1
6	301S1024		滑块底座螺钉	screw	1
7	30127045	200136	回油毡卡簧	clamp	1
8	S01004	255005	螺钉 M4×7.8	screw	1
9	30127060		毛毡卡簧	clamp	1
10	30112186		油管固定架	supporting structure	1
11	12921002	240135	雅尼龙油管	tube	1
12	20429001	202199	油管卡簧	clamp	8
13	30112039	255006	接油盘	oil guard	1
14	S01002	7017	螺钉 M4×6.5	screw	2
15	3012101500	255007-91	喷油管组	oil distributor	1
16	N01001	4821	螺母 M4	nut	1
17	30121022	240134	Φ4×Φ6油管	tube	1
21	30121022	240134	Φ4×Φ6油管	tube	1
22	30136004	200136	双头油管接头	joint	1
23	301S30013	200152	过油螺钉	joint screw	2
24	30136003	255035-91	铜油管接头	pipe	1
25	301S30012	255037	油管螺钉	screw	1
26	30121022	240134	Φ4×Φ6油管	tube	1
27	30136001	200136	油管接头	joint	2
28	201S30004	200152	过油螺钉	joint screw	1

十六、打线凸轮外移部件(Outside cam assemblies)

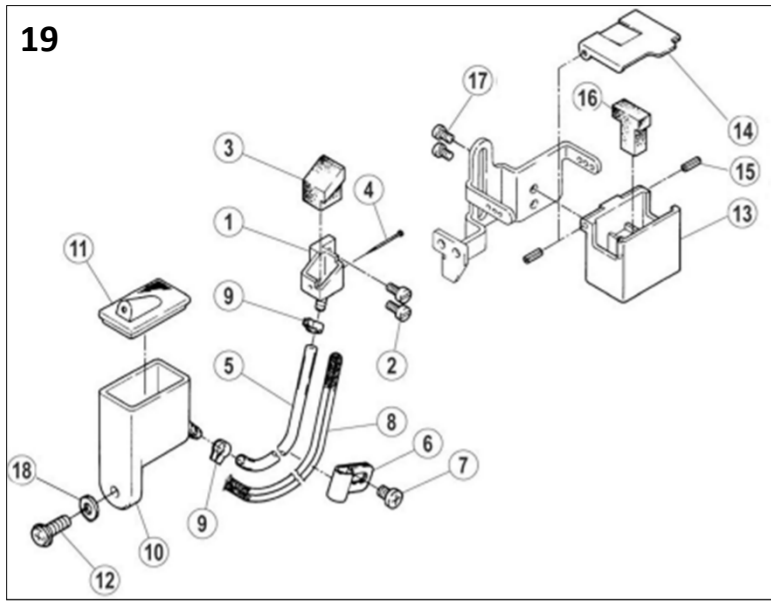
序号 Ref.No	公司件号 Part No	参考件号 Ref. Part. no	名称	Description	数量 Number
1	30102065		打线凸轮轴	shaft	1
2	H03004		挡圈12	ring	1
3	B04017		轴承6001Z	bracket	2
4	H01011		挡圈 28	ring	2
5	30125004		小同步带轮1	small gear1	1
6	30122100		油封	plug	1
7	S10029		螺钉 M6×0.75×5	screw	4
8	30135005		小同步带	small timing belt	1
9	S10002		螺钉 M5×5	screw	2
10	30103071		打线凸轮组件	thread takeup	1
11	201S15003		挡圈螺钉	screw	2
12	H01016		挡圈21	ring	1
13	30103033		挡油套	oil baffle set	1
14	30112231		打线架	bracket	1
15	B06004		轴承 6801RS	bracket	1
16	30108011		挡圈	washer	1
17	30113045		过线	thread guide	1
18	S01001		螺钉 M4×7	screw	1
19	30113016		过线	thread guide	1
20	30213045		过线	thread guide	1
21	301S30055		调压螺钉	screw	1
22	10128001		毛毡垫	felt	1
23	12928036		小夹线垫片	thread guide disc	2
24	12927012		小夹线弹簧	pretension spring	1
25	129S30012		夹线螺母	tension nut	1
26	L02001		螺钉 M4×8	screw	1
27	30112230		打线座	bracket	1
28	30227031		卡簧片	clamp	1
29	S04021		螺钉	screw	2
30	207S11020		螺钉 M3×4	screw	3
31	30112233		打线片	thread guide	1
32	30313019		过线片(左)	thread guide	1
33	30313020		过线片(右)	thread guide	1
34	W03007		垫圈	washer	2
35	301S20020		螺钉	screw	1

18



十八、油泵部件(Oil pump assemblies)

序号 Ref.No	公司件号 Part No	参考件号 Ref. Part. no	名称	Description	数量 Number
1	3012000100	255040-91	油泵组件	oil pump assy	1
2	30102031	255024	油泵轴	shaft	1
3	30120004	255025	主动轮2	rotor	1
4	30120007	255026	主动轮1	rotor	1
5	30120005	255027	从动轮	rotor	2
6	30120008	255028	油泵盖	cover	1
7	301S20011	7105	油泵螺钉	screw	2
8	S05006	7026	螺钉 M4×25	screw	2
9	30125003	255019	油泵蜗轮	worm wheel	1
10	S10002	4514	螺钉 M5×5	screw	2
11	S05004	4501	螺钉 M5×14	screw	2
12	301S30014		过油螺钉	joint screw	1
13	30101023	255000	油盘	oil reservoir	1
14	301S11015	5138B	堵油螺钉	screw	1
15	20528014	202287A	垫圈	washer	1
16	S05007	4504	螺钉 M8×20	screw	5
17	30122025	255001	油盘密封圈	O ring	1
18	20136001	206233	滤油器	filter element	1
19	201S30030	210200	滤油器接头	bracket/filter	1
20	001010	206431	O型圈 38.7×3.55	O ring	1
21	300140	210201-SD	滤油器盖	cover	1
22	S01003	7021	螺钉 M4×12	screw	3
23	30131004	9A3002	提示说明	filter seal	1
24	30120002		油泵固定板	fixed plank	1
25	30220001		油泵体(上)	oil pump (up)	1
26	30120006		油泵体(下)	oil pump (down)	1



十九、硅油盒装置部件 (Silicon oil delice assemblies)

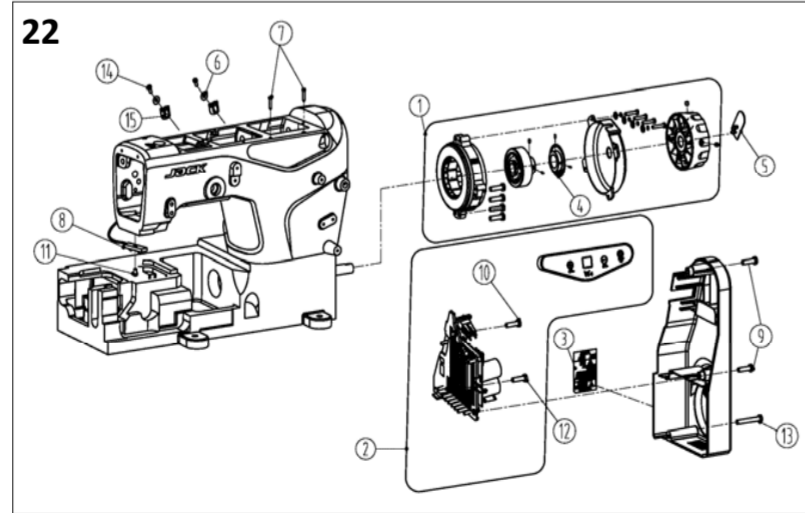
序号Ref.No	公司件号 Part No	参考件号 Ref. Part. no	名称	Description	数量 Number
1	30101027	255013	机针冷却器	needle cooler (lower)	1
2	S01027	7010	螺钉 M3×6	screw	2
3	30123012	255014	油棉	felt	1
4	30126009	210766	销	pin	1
5	30121021	240117	Φ5×Φ7油管	tube	1
6	30127020	206115	油管压簧片	bracket	1
7	S01004	7019	螺钉 M4×7.8	screw	1
8	20123021	202175	油线	oil wick	1
9	20429001	202199	油管卡簧 (小)	clamp	2
10	30101026	255015	下硅油盒	silicone oil	1
11	30122026	255016	下硅油盒盖	cap	1
12	S01005	7020	螺钉 M4×10	screw	1
13	30111070	207066-LD	上硅油盒 (塑料)	silicone oil	1
14	30112040	207067-LD	硅油盒盖	cap	1
15	P03008	206781	销 2×6	pin	2
16	30123011	207068	硅油棉	felt	1
17	S01006	7009	螺钉 M3×4.5	screw	2
18	W01001	303448	垫圈 4	washer	1

二十、线架部件 (Thread spool assemblies)

序号Ref.No	公司件号 Part No	参考件号 Ref. Part. no	名称	Description	数量 Number
1	20131019		棒帽	Rod Cap	1
2	20131001		上管	Upper thread column	1
3	20131020		导线环螺钉	Screw	4
4	20131016		导线环	Thread spool tray	1
5	20131016		导线架	Thread spool tray	1
6	201316006		导线环螺母	Thread guide hook nut	4
7	20131018		过线环	Thread guide hook	5
8	20131021		棒架螺钉	Screw	2
9	20131009		棒架	Clamp plate	1
10	201316004		螺母	Nut	4
11	20131011		导线棒	Thread guide bar	1
12	30113019		过线棒	Thread guide	4
13	20131017		托线架	Thread spool tray	1
14	20122049		防震垫	Plate dog link washer	2
15	20128025		下管垫圈	Lower washer	2
16	201316005		螺母	Nut	1
17	20131004		托线架	Thread spool tray	1
18	20128018		垫圈	Washer	5
19	201316004		螺母	Nut	4
20	20131007		线盘	Spool tray	5
21	20131010		线盘垫	Spool tray cushioning	5
22	20131006		线托棒	Spool pin	5
23	20131008		线圈定位套	Spool Cushion	5
24	20131004		托线架	Thread spool tray	1
25	S04050		螺钉 M5×15	Screw	2
26	20131003		套	Bushing	1
27	N01030		套螺母	Nut	2
28	20131022		棒架螺钉	Screw	2
29	201316004		螺母	Nut	4
30	20131015		导线架	Threadspooltray bracket	1
31	20131074		线架组件	Thread stand component	1

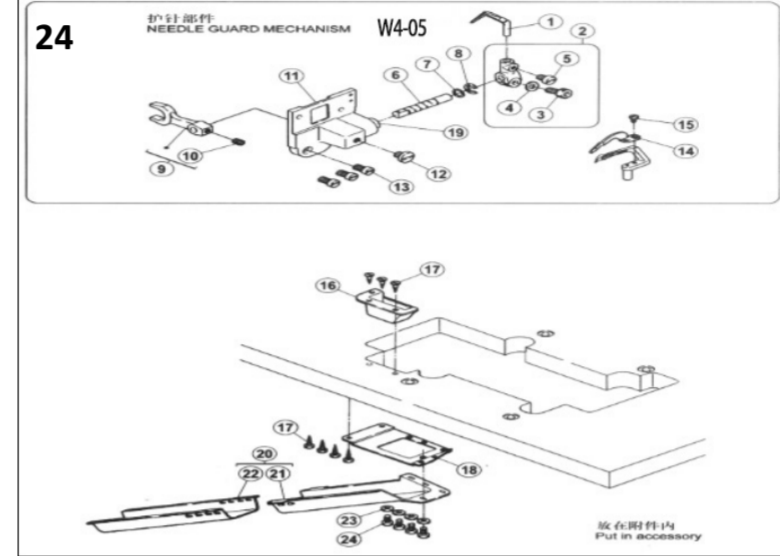
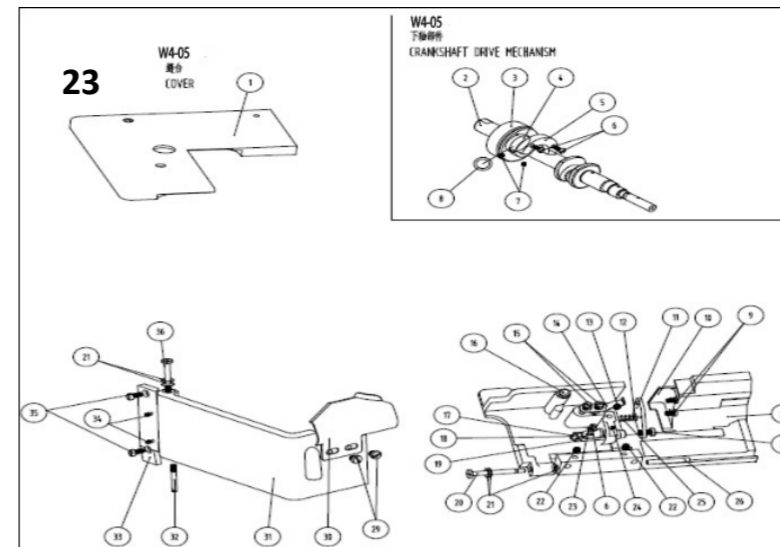
二十一、油盘托板部件 (Oil plate assemblies)

序号 Ref.No	公司件号 Part No	参考件号 Ref. Part. no	名称	Description	数量 Number
1	3010103200	9048	安装螺钉 (一套)	screw(set)	1
2	20131028	206336	托盘固定螺母	nut	4
3	20131027	4512	托板内六角螺钉	bolt	1
4	20131029	206337	大垫圈	washer	8
5	20131030	205764	防震套	rubber cushion	4
6	30122031	205467	减震垫圈	spacer	4
7	20131056	272	内六角扳手 (5mm)	allen key driver/5mm	1
8	30112198	259000	油盘托板	rest board	2
9	301S30018	7093	螺钉	screw	4
10	30122029	206338	油盘减振垫	rubber cushion	4
11	30112041	206329	链条挡板	treadle chain guide	2
12	S01011	7027	螺钉 M5×10	screw	4



二十二、DI部件专用件 (DI specific parts)

序号 Ref.No	公司件号 Part No	参考件号 Ref. Part. no	名称	Description	数量 Number
1	3103000300		LED灯	LED light	1
2	3103300100		缝缝光电伺服电机	electrical machine	1
3	20131063		警示牌	washer	1
4	95300018		光栅组件	plug	1
5	21111018		塑料logo	logo	1
6	W01001		垫片	washer	2



二十四、05专用部件 (05 specific parts)

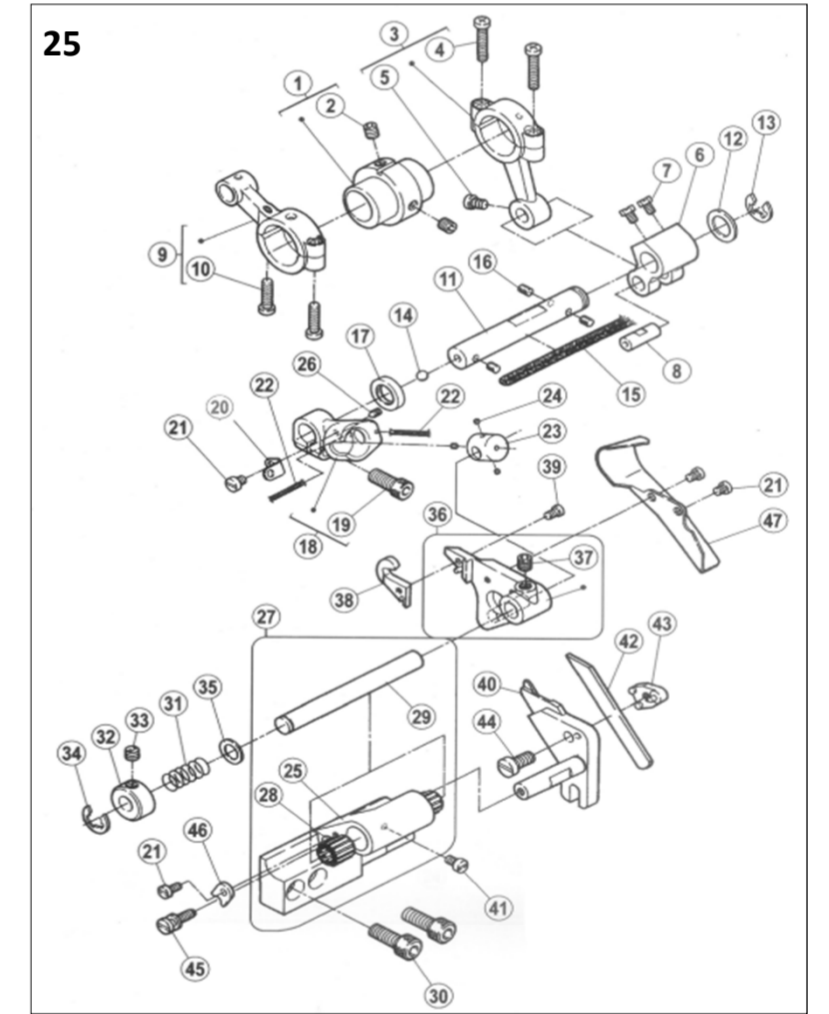
序号Ref.No	公司件号 Part No	参考件号 Ref. Part. no	名称	Description	数量 Number
1	30117002	357551B	后护针挡	needle guard(rear)	1
2	30117007	251505-92	护针挡架组件	lever assy	1
3	S05003	4500	螺钉 M5×10	bolt	1
4	W02001	303067	垫圈5	washer	1
5	S01002	7017	螺钉 M4×6.5	screw	1
6	30102037	251503	护针轴	shaft	1
7	W01021		垫片	washer	1
8	H05013	202522	挡圈6	ring	1
9	400064	251504	叉架	lever	1
10	S10002	4514	螺钉 M5×5	screw	1
11	30101036	251500-91	护针轴座	bracket	1
12	301S11016	7081	螺钉	screw	1
13	S01004	7019	螺钉 M4×7.8	screw	3
14	30117003		前护针挡	needle guard(front)	1
15	S01012		螺钉 M2.5×4	screw	1
16	30111013	306473-UA	挡料斗	waste chute top(C)	1
17	301S30019	4905	木螺钉	screw	7
18	30112048	306474A	托板	bracket	1
19	30103046		套筒	bushing	1
20	3011101400		排料筒座组件	waste chute assy	1
21	30111014	205468-UA	排料筒座	waste chute top(A)	1
22	30111015	205469-UA	排料筒	waste chute top(B)	1
23	30128036		垫片	washer	1
24	S01005	7020	螺钉 M4×10	screw	4

二十五、05专用部件 (05 specific parts)

序号Ref.No	公司件号 Part No	参考件号 Ref. Part. no	名称	Description	数量 Number
1	30110009	255500	凸轮	eccentric assy	1
2	S10006	4539	螺钉 M5×6	screw	2
3	400062		连杆组件	eccentric assy	1
4	S01008		螺钉 M3.5×13	screw	4
5	S01010		螺钉 M4×8	screw	1
6	30104007		弯针曲柄	crank	1
7	301S12001		螺钉	screw	2
8	30126003		曲柄销	pin	1
9	400063		弯针摆动连杆	connection assy	1
10	S01008		螺钉 M3.5×13	screw	2
11	30102038	255502	曲柄轴	shaft	1
12	30128008	240102	护针轴垫圈	washer	1
13	H05001		垫圈10	ring	1
14	30209009		差动轴滚珠	ball	1
15	30123014		油线	oil wick	1
16	30123001		毛毡	felt	3
17	30122019		油封	oil seal	1
18	30104028	255503	摆轴曲柄	lever assy	1
19	S05004		螺钉 M5×14	screw	1
20	30112049	255504	挡板	latch	1
21	S01006	7009	螺钉 M3×4.5	screw	4
22	30123015		油线	oil wick	2
23	30102039	255505	摆轴	shaft	1
24	30123008		毛毡	felt	3
25	30101040		刀座	bracket assy	1
26	S12002		螺钉 M3×4	screw	1
27	3010104000		刀座组件	bracket assy	1
28	30103085		刀座套筒	needle bearing	2

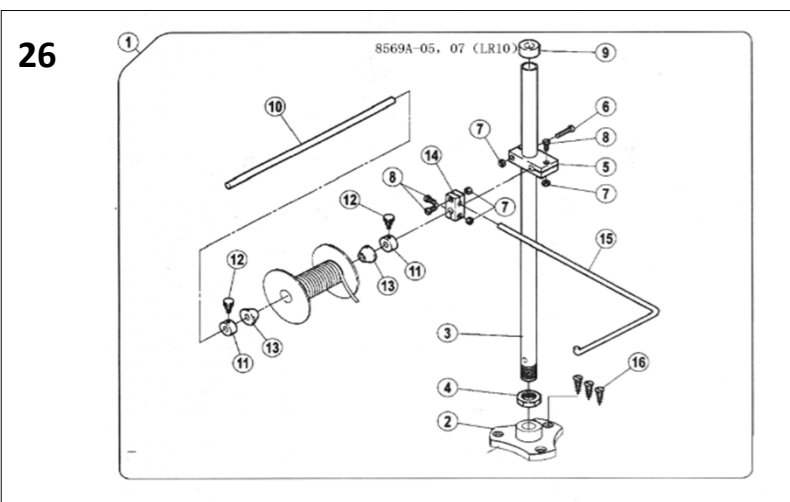
二十三、05专用部件 (05 specific parts)

序号 Ref.No	公司件号 Part No	参考件号 Ref. Part. no	名称	Description	数量 Number
1	300471	250052	左缝台盖	bed cover	1
2	400068	250501-91	下轴	crankshaft assy	1
3	3012400300		油封轴承	bushing	1
4	30103003	250504	前轴套	bushing	1
5	30109002	250534	下轴平衡块	balance weight	1
6	S01009		螺钉 M3×7.5	screw	3
7	S10006	4539	螺钉 M5×6	screw	2
8	001001		O型圈15×2.65	O ring	1
9	S01001	7018	螺钉 M4×7	screw	2
10	30112045	250025-ME	前挡板	font cover(small)	1
11	30112046	250026	定位板	bracket	1
12	30126010	306920	平行销	pin	1
13	S10002	4514	螺钉 M5×5	screw	1
14	30127001	250051	前罩簧	flat spring	1
15	S01002	7017	螺钉 M4×6.5	screw	2
16	30122015		前罩防振垫	cushion	1
17	30102110	250027	前罩板轴	shaft	1
18	30112160	250028	挡板	stopper	1
19	30103160		套筒	bushing	1
20	301S20002	250013	前罩缝台座螺钉	screw	1
21	30128002	201191	弹簧垫圈	spring	5
22	S10006	4539	螺钉 M5×6	screw	2
23	W01002		垫片	washer	1
24	S10026	4554	螺钉 M3×3	screw	1
25	11727007		弹簧	spring	1
26	301S20003	250014	前罩缝台座螺钉	pin	1
27	S01011	7028	螺钉 M5×10	screw	1
28	30101161		前罩缝台	arm cover (top)	1
29	301S11020	7074	螺钉	screw	2
30	30112044	255517	左挡板	fabric guide	1
31	30101034	250035A	侧盖	side cover assy	1
32	301S20005		销螺钉	pin	1
33	300793		侧盖合扇	cover	1
34	S10001		螺钉 M3×4	screw	2
35	S01005	7020	螺钉 M4×10	screw	3
36	301S20004		侧盖合扇销钉	screw	1



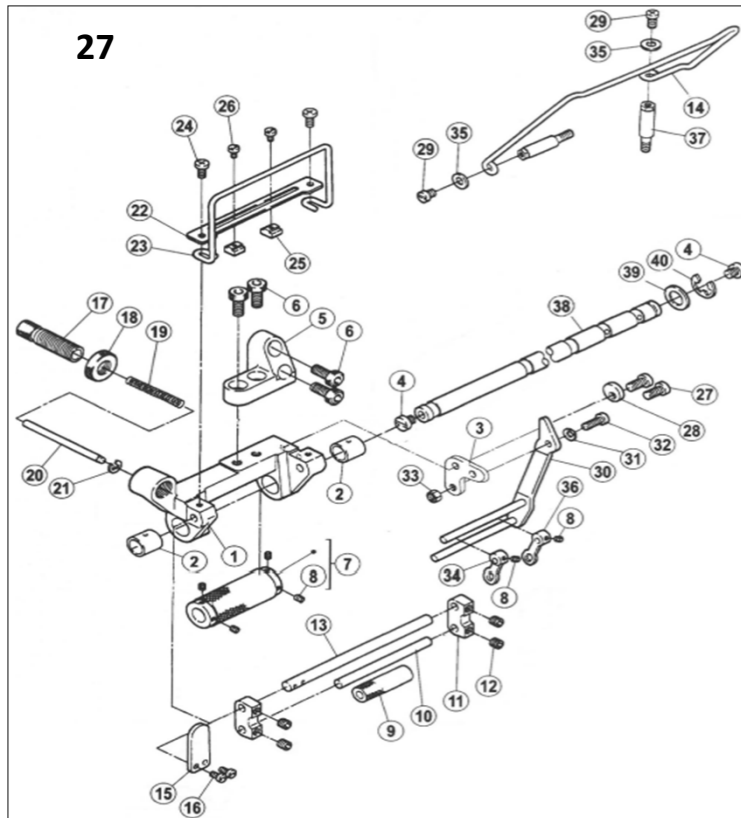
29	30102040	255508-2	下刀座轴	shaft	1
30	S05019		螺钉 M6×16.3	screw	2
31	30127022	306105	弹簧	spring	1
32	30108006	192024	挡圈	ring	1
33	209S14008	W00024-1	螺钉	screw	1
34	H05013		挡圈	ring	1
35	30128026	207045	垫片	washer	1
36	30101037	255507-91	上刀架	upper knife holder	1
37	S12003	4547	螺钉 M6×0.75×5	screw	1
38	30119001	306394	上刀	upper knife	1
39	301S11017	5109	上刀固定螺钉	screw	1
40	30101039	255509	摆轴曲柄	lower knife holder	1
41	301S11025	7036	护针曲柄螺钉	screw	1
42	20619004	204161	下刀	lower knife	1
43	30101038	255510	下刀挡板	lower knife clamp	1
44	S01011	7028	螺钉 M5×10	screw	1
45	301S30021	255513	调节螺钉	screw	1
46	30112051	255511	挡片	guide	1
47	30112050	255515	除削板	chip guard	1

7	310s17001		螺钉	screw	2
8	3103000300		LED灯	LED light	1
9	s05004		螺钉 M5×10	screw	2
10	s05003		螺钉 M5×10	screw	1
11	S05190		螺钉 M3×6	screw	1
12	S05068		螺钉 M5×20	screw	1
13	s05003		螺钉 M5×10	screw	1
14	207S11007		螺钉 M5×5.5	screw	2
15	20711210		线夹	clip	2



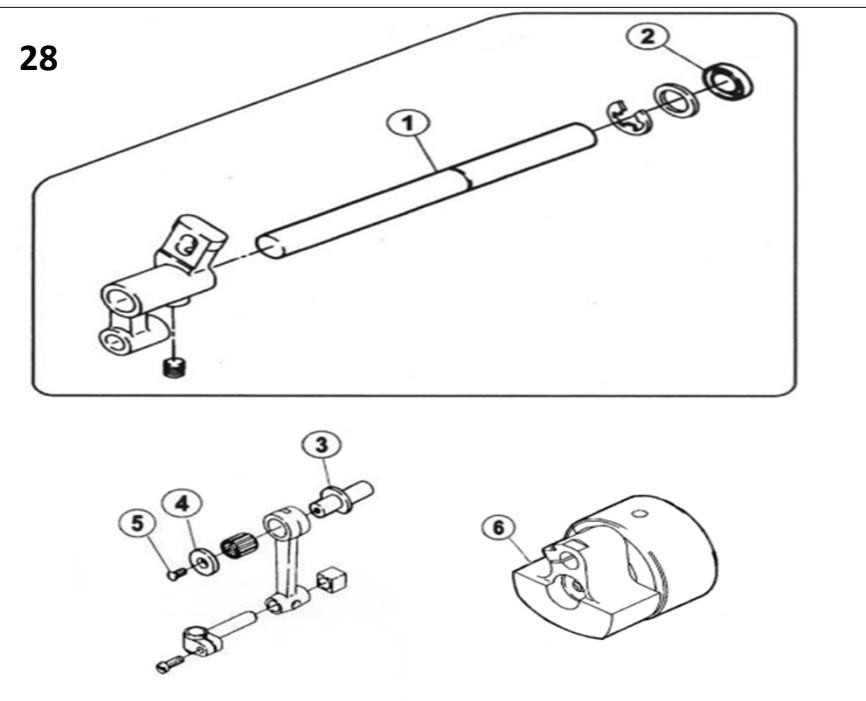
二十六、05、07专用部件 (05、07 specific parts)

序号Ref.No	公司件号 Part No	参考件号 Ref. Part. no	名称	Description	数量 Number
1	3010204100	306469A9S	带子组件	reel stand assy	1
2	30103047	306468-SA	支柱盘	bracket	1
3	30102042	306466-SA	支柱	rod	1
4	N02001		螺母SM3/4×16	nut	1
5	30111008	383-SA	棒架	bracket	1
6	S04003		螺钉 M4×25	screw	1
7	N01005		螺母 M4	nut	4
8	S04004		螺钉 M4×15	screw	3
9	30122027	386	棒帽	rod cap	1
10	30102043	306464	带架直棒	shaft	1
11	30103048	306463	轴古	collar	2
12	S01068		螺钉 M4×8	screw	2
13	30103064	306462	轴锥架	reel guide	2
14	30111009	233-SA	固定器	bracket	1
15	30113020	306467	带架棒	rod	1
16	301S30022	4913	木螺钉	screw	3

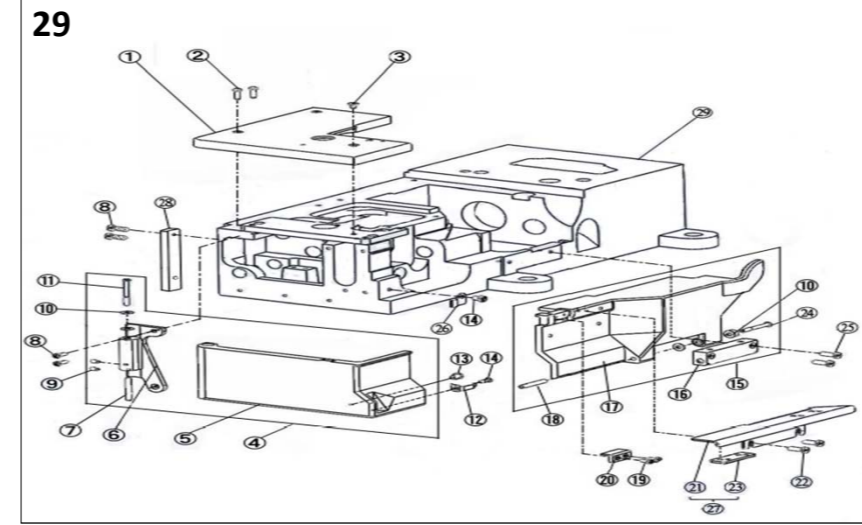


二十七、05、07专用部件 (05、07 specific parts)

序号Ref.No	公司件号 Part No	参考件号 Ref. Part. no	名称	Description	数量 Number
1	300144		压带架座	bracket assy	1
2	30103055		套筒	bushing	2
3	30112058		夹带连接板	bracket	1
4	301S11020	255515	压带轴螺钉	screw	2
5	300143		压带架支座	bracket	1
6	S05019		螺钉 M6×16.3	screw	4
7	3010305700		压带轮组件	roller assy	1
8	S10005		螺钉 M3×3	screw	6
9	30103059		压带轮 II	rooler	1
10	30102045		夹带短轴	shaft	1
11	30109018	255502	夹带轴架	bracket	2
12	S10002	240102	螺钉 M5×5	screw	4
13	30102046		夹带长轴	shaft	1
14	30113021		带子架	lace guide	1
15	30112059		手柄	lever	1
16	S01027		螺钉 M3×5	screw	2
17	301S30027		调节螺钉	screw	1
18	301S16011	255503	调节螺母	nut	1
19	30127024		弹簧	spring	1
20	30126013	255504	销轴	shaft	1
21	H05002	7009	挡圈5	ring	1
22	30112055		压带板	guide	1
23	30113022	255505	压带架	lace guide	1
24	S01002		螺钉 M4×6.5	screw	2
25	301S16010		位置挡块	guide	2
26	301S11018		螺钉	screw	2
27	S01004		螺钉 M4×7.8	screw	2
28	30128028		偏心垫	stopper	1
29	S01004	255508-2	螺钉 M4×7.8	screw	2
30	3011205600		夹带架组件	bracket assy	1
31	30128020	306105	垫片	spring	1
32	S05048	192024	螺钉 M4×10	screw	1
33	N01001	W00024-1	螺母 M4	nut	1
34	30105017	202522	夹带连杆 I	lace guide	1
35	W01004	207045	垫圈5	washer	2
36	30105018	255507-91	夹带连杆 II	lace guide	1
37	301S30025	4547	台螺钉	screw	2
38	30103044	255513	压带轴	shaft	1
39	30128008	255511	摆架轴垫圈	washer	1
40	H05001	255506	挡圈10	ring	1



23	s02027		螺钉M2.5X8	Screw	2
24	s01112		螺钉M2X10	Screw	1
25	30109036		下切刀块	lower knife holder	1
26	301s30034		螺钉M3X3.5	Screw	1
27	30101140		垫块	Screw	1
28	207s17004		螺钉M2.5X6	plug	2
29	30119006		动刀	plug	1
30	30112144		垫片	washer	1
31	s01012		螺钉M2.5X4	Screw	2
32	30109032		导块	Screw	1
33	301s30033		螺钉M5X6	Screw	2
34	s01012		螺钉M2.5X4	Screw	2
35	w01012		垫片	washer	2
36	30112113		过线	thread takeup	1
37	301s20030		过线螺钉	Screw	1
38	30113045		过线	thread takeup	1

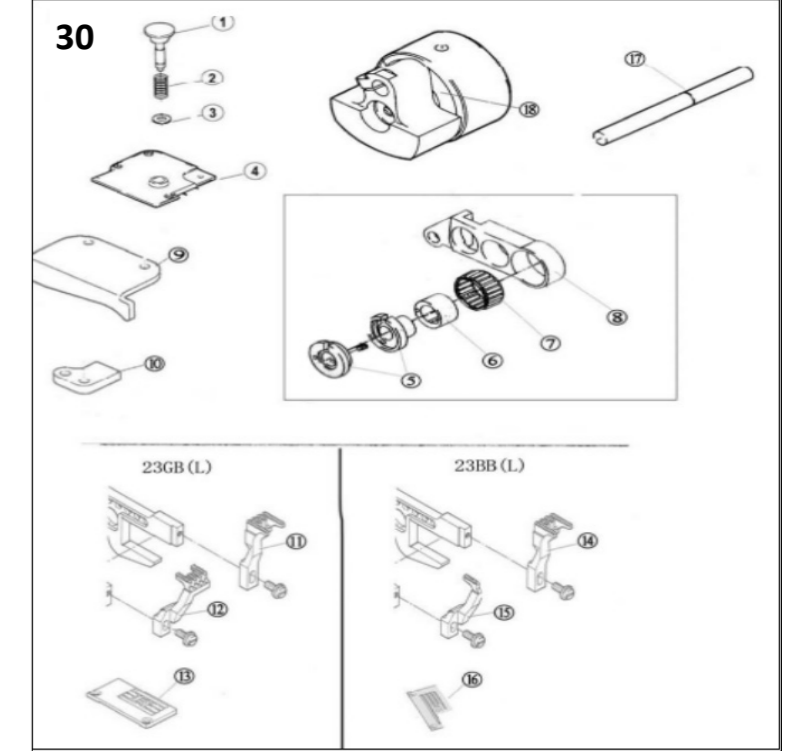


二十九、W4N专用部件 (W4N specific parts)

序号Ref.No	公司件号 Part No	参考件号 Ref. Part. no	名称	Description	数量 Number
1	300953		左缝台盖 (喷)	bed cover (left)	1
2	S01003	7021	螺钉 M4×12	screw	2
3	S02001	7043	螺钉 M4×6	screw	1
4	300952		侧盖组件 (喷漆)	side coverassy	1
5	30101111		侧盖	side cover	1
6	30101112		侧盖合扇	cover	1
7	301S20005		销螺钉	pin	1
8	S01005	7020	螺钉 M4×10	screw	4
9	S10001		螺钉M3×4	screw	2
10	30128002	201191	弹簧垫圈	spring	5
11	301S20004		侧盖合扇销钉	screw	1
12	30127030		侧前锁紧簧	flat spring	1
13	30122015		前罩防震垫	cushion	1
14	S01002	7017	螺钉 M4×6.5	screw	2
15	300951		加宽前门板组件	front coverasy	1
16	30101063		前罩缝台座	bracket	1
17	30101110		前门板	front cover	1
18	301S20003	250014	前罩缝台座螺钉	pin	1
19	S01006	7009	螺钉 M3×4.5	screw	2
20	30209018		针板座接块	block	1
21	30112097		加宽前门板接板	block	1
22	S01065	7079	螺钉 M5×6	screw	2
23	30112098		加宽前门板接板	baseplate	1
24	301S20002	250013	前罩缝台座螺钉	screw	1
25	S01007	7023	螺钉 M4×13.5	screw	2
26	30112095		侧前锁紧舌	flat spring	1
27	302525		加宽前门板接板	front coverasy	1
28	300955		盖板	cover	1
29	302109		机壳	machine frame	1

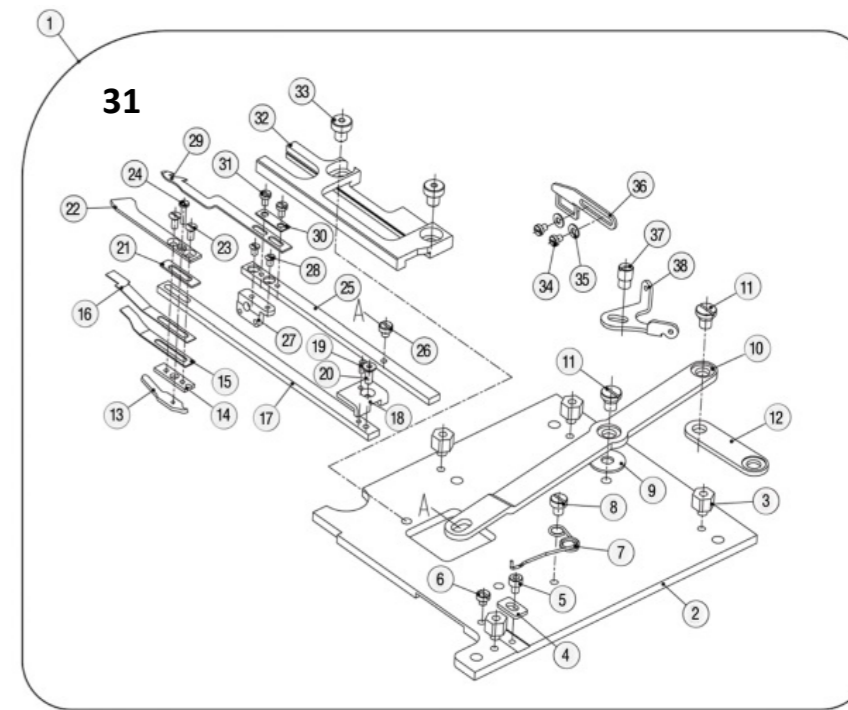
三十一、下剪线部件 (knife holder assemblies)

序号 Ref.No	公司件号 Part No	参考件号 Ref. Part. no	名称	Description	数量 Number
1	3011900300		下切刀组件	knife holder assembly	1
2	30109035		下切刀刀盘	bracket	1
3	301s30044		下切刀刀盘螺钉	screw	4
4	30212128		垫片	washer	1
5	s05047		螺钉M3X4	screw	1
6	208s11009		螺钉M3.5X4	screw	1
7	30127053		弹簧	spring	1
8	s01031		螺钉M4X4.7	screw	1
9	w01090		垫片	washer	1
10	30112111		摆杆	lever	1
11	301s20018		螺钉M5	screw	2
12	30105025		连接板	link	1
13	30112156		压板	flat spring	1
14	30112157		垫板	washer	1
15	30112158		压板	flat spring	1
16	30112159		压板	flat spring	1
17	30109037		上切刀台	upper knife lever	1
18	30112091		缓冲挡板	screw	1
19	P01031		销3x5	screw	1
20	s05217		内六角沉头螺钉	screw	1
21	30128041		垫片	washer	1
22	30119010		上切刀	upper knife	1



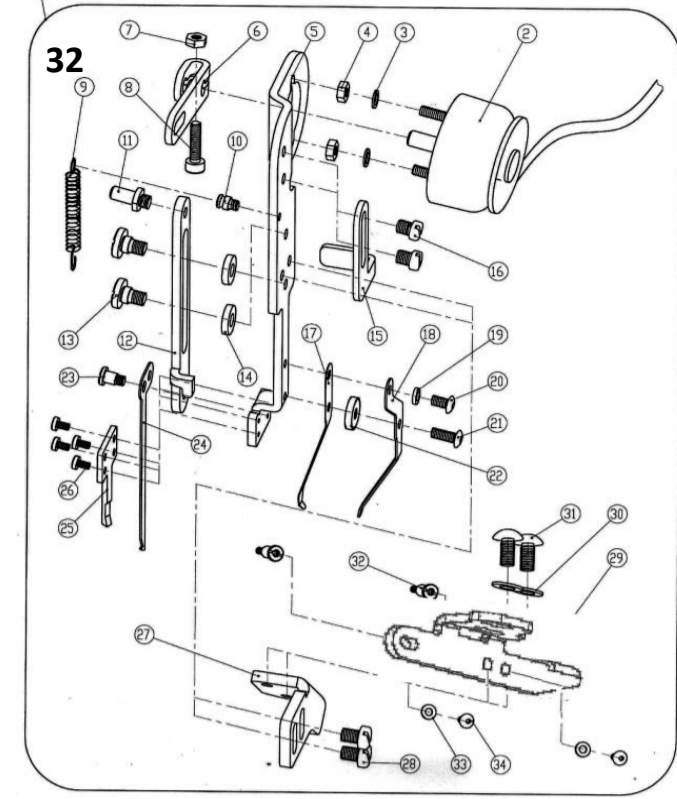
三十、23专用部件 (23 specific parts)

序号 Ref.No	公司件号 Part No	参考件号 Ref. Part. no	名称	Description	数量 Number
1	30126016		针距调节按钮	pin	1
2	30127026		针距调节簧	spring	1
3	12928008		平垫圈	washer	1
4	30101162		下节左盖	cover	1
5	3010308900		调节器套组 (大针距)	eccentric retainer	1
	30103150		送布调节器	regulator	1
6	30103100		偏心轴承套 (大针距)	eccentric	1
7	B07043		轴承19×23×10	needle bearing	1
8	30104060		差动送布架 (大针距)	Link/main feed	1
9	30109025		左挡板	guide (left)	1
10	30109026		挡板	guide (lower)	1
11	30114028		送布牙 (356/364)	main feed dog	1
12	30114029		差动牙 (356/364)	differential feed	1
13	30115041		23GB针板 (356)	needle plate	1
	30115042		23GB针板 (364)	needle plate	1
14	30114030		送布牙 (356/364)	main feed dog	1
15	30114031		差动牙 (356/364)	differential feed	1
16	30115045		2302BB针板 (356)	needle plate	1
	30115046		2302BB针板 (364)	needle plate	1
17	30102051		摆轴	shaft	1
18	400308		针杆曲柄	motion assy	1



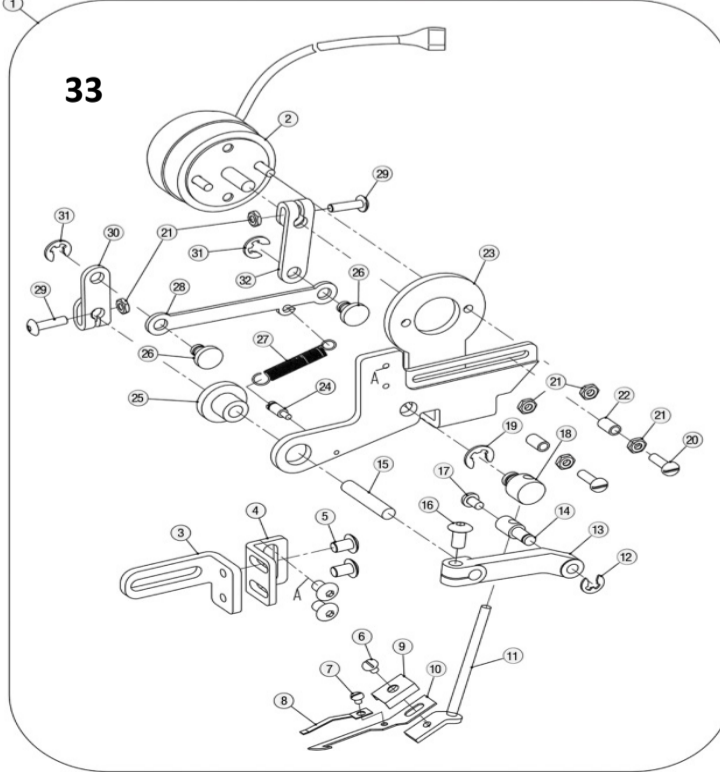
二十八、21、22专用部件 (21、22 specific parts)

序号Ref.No	公司件号 Part No	参考件号 Ref. Part. no	名称	Description	数量 Number
1	30102051	252004A	摆轴	shaft	1
2	30122008		油封	oil seal	1
3	30102050	251010A	连杆偏心轴	eccentric pin	1
4	30128030	205097	偏心轴垫	washer	1
5	S02007		螺钉M3×5	screw	1
6	400308		针杆曲柄	motion assy	1



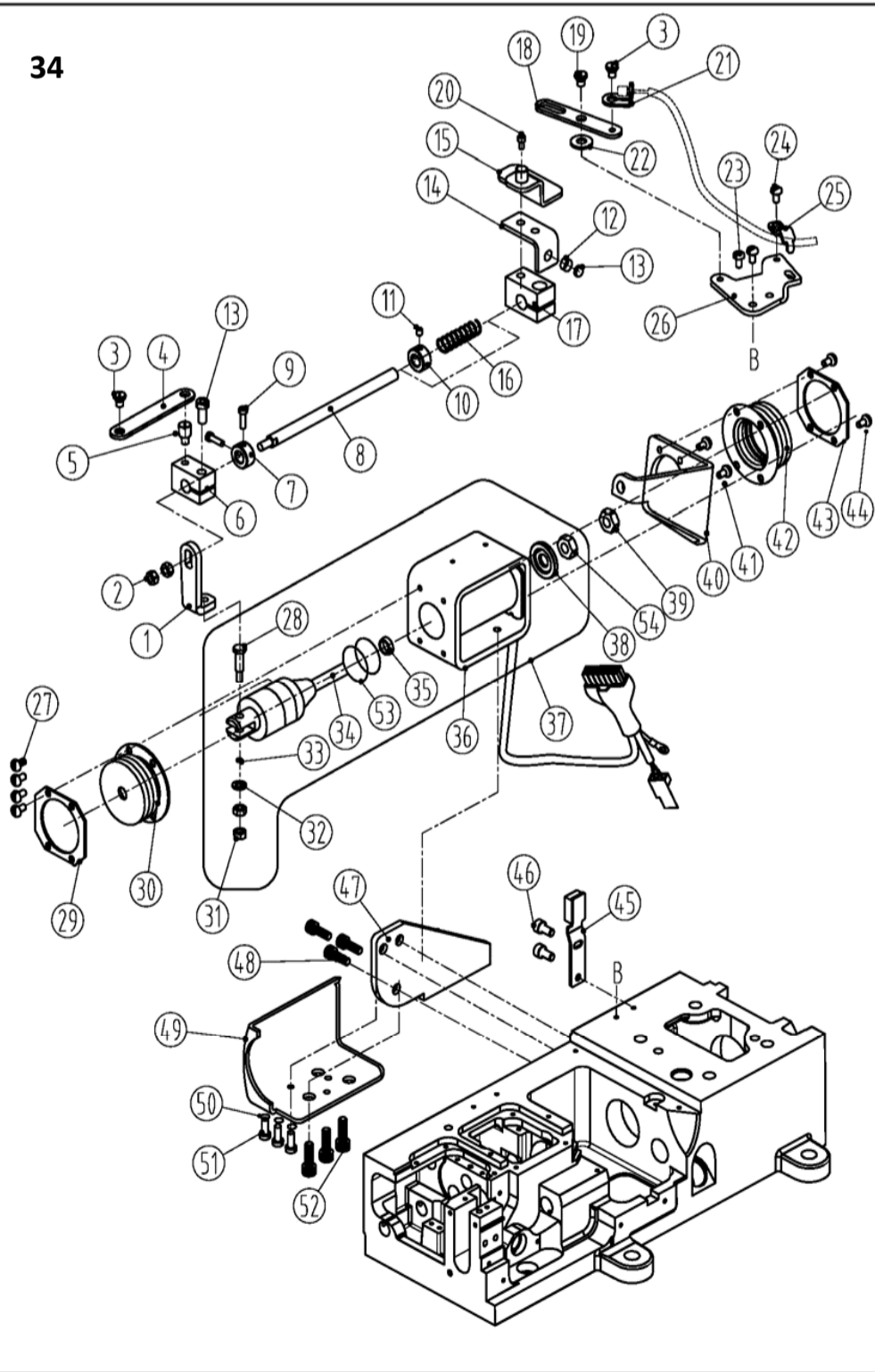
三十二、上剪线部件(knife holder assemblies)

序号 Ref.No	公司件号 Part No	参考件号 Ref. Part. no	名称	Description	数量 Number
1	3011900400		上切刀组件	knife holder assembly	1
2	3013004000		电磁铁组件	solenoid assembly	1
3	W02025		弹性垫圈	washer	2
4	N01013		螺母	nut	2
5	30112118		安装板	install plat	1
6	30112119		锁紧板	plat	1
7	N01013		螺母	nut	1
8	S05014		螺钉	screw	1
9	30127039		弹簧	spring	1
10	301S30036		螺钉	screw	1
11	301S30037		螺钉	screw	1
12	30112120		滑板	plat	1
13	301S20021		螺钉	screw	2
14	30112121		垫片	washer	2
15	30112122		限位板	plat	1
16	S01087		螺钉M3.5x4	screw	2
17	30112123		压片一	presser plat	1
18	30112124		压片二	presser plat	1
19	W01005		垫片	washer	1
20	301S30038		螺钉	screw	1
21	301S30039		螺钉	screw	1
22	301S16014		调节螺母	nut	1
23	301S20022		螺钉	screw	1
24	30119008		动刀	plat	1
25	30119009		切刀	thread wiper	1
26	S01088		螺钉M2x3.5	screw	4
27	30112125		安装板	install plat	1
28	S01089		螺钉M4x5.5	screw	2
29	30112126		安装板	install plat	1
30	W01006		垫片	washer	2
31	S05304		螺钉	screw	2
32	301S30041		螺钉	screw	2
33	W01006		垫片	washer	2
34	S05304		螺钉	screw	2



三十三、拨线部件 (Dial line assemblies)

序号 Ref.No	公司件号 Part No	参考件号 Ref. Part. no	名称	Description	数量 Number
1	3011901100		拨线器组件	thread wiper assembly	1
2	3013004000		电磁铁组件	solenoid	1
3	30112205		固定板	bracket	1
4	30112206		固定板	bracket	1
5	S05303		内六角平圆头螺钉M4x6	screw	4
6	S01022		螺钉M3x4	screw	1
7	S01097		螺钉M2x2	screw	1
8	30112204		弹簧片	presser plat	1
9	30112129		压板	bracket	1
10	30112203		勾线片	hook plate	1
11	30102093		勾刀杆	hook rod	1
12	H05002		卡簧	ring	1
13	30101142		曲柄	crank	1
14	30126030		销	screw	1
15	30102052		轴销	screw	1
16	S05304		内六角平圆头螺钉M4x8	screw	1
17	S01027		螺钉M3x6	screw	1
18	30126033		转动销	screw	1
19	H05003		卡簧	ring	1
20	S01110		螺钉M3x10	screw	2
21	N01013		螺母M3	nut	6
22	30122102		橡胶套	plug	2
23	30112200		安装板	bracket	1
24	301S01005		螺钉	screw	1
25	30103067		铜套	bushing	1
26	30126032		轴位销	screw	1
27	30127061		弹簧	ring	1
28	30105029		连杆	lever	1
29	S05302		内六角平圆头螺钉M3x12	screw	2
30	30104035		曲柄	crank	2
31	H05012		卡簧	ring	1
32	30104034		曲柄	crank	1

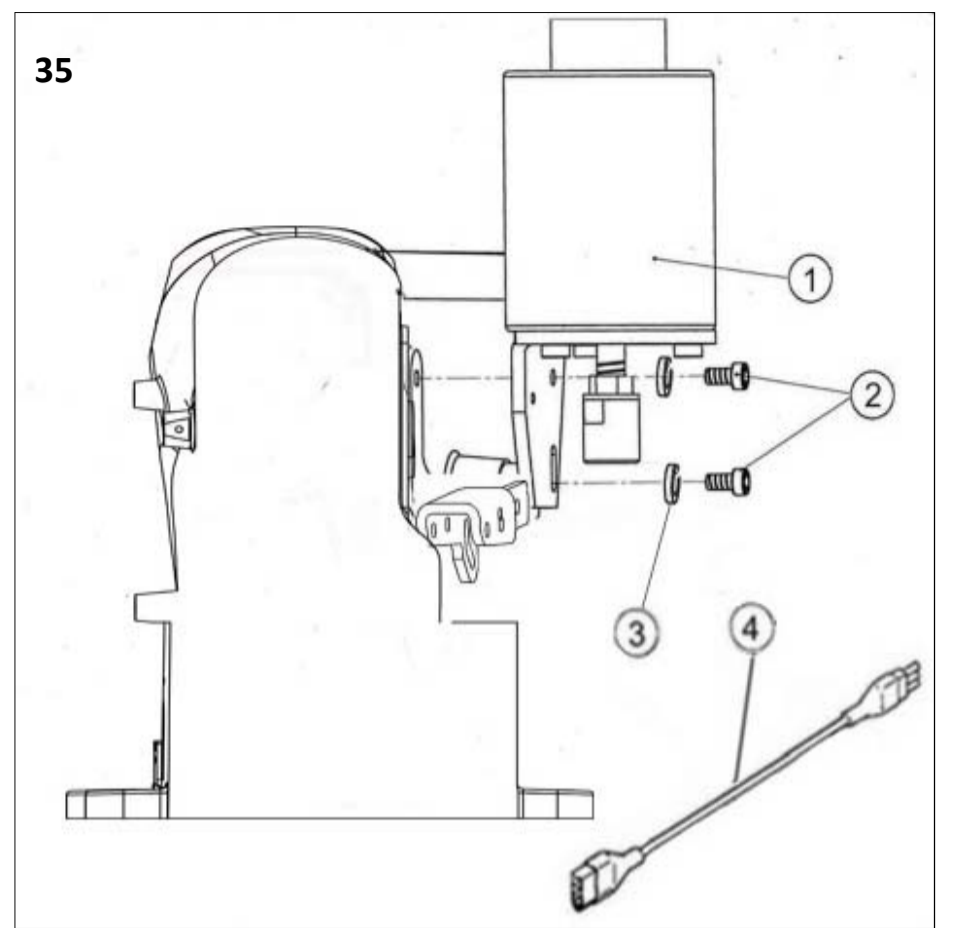


三十四、剪线电磁铁部件 (solenoid assemblies)

序号 No.	件号 Parts No.	参考件号 Ref.Part.No.	名称	Description	数量 Number
1	30212183		连接板	bed pin	1
2	N01012		螺母M6	pin	2
3	302S20014		螺钉	screw	1
4	30212190		连杆	bed pin	1
5	301S20030		螺钉	screw	1
6	30104066		固定块	Fixed block	1
7	30108004		挡圈	plug	1
8	30102111		导向轴	washer	1
9	301S11023		螺钉	screw	2
10	30108006		挡圈	Retaining ring	1
11	201S14002		螺钉	screw	1
12	30112108		铜片	sheet copper	1
13	30130017		磁铁	magnetic iron	1
14	30112182		感应安装板	bracket	1
15	3111200200		推板组件	dead plate	1
16	30127058		弹簧	cscrow	1
17	30104006		曲柄块	sticker	1
18	31012071		换向杆	The reversing lever	1
19	310S20008		轴位螺钉	screw	1
20	S05068		螺钉M5x20	screw	1
21	31012072		拉板	Pull	1
22	31012077		换向垫片	spacer	1
23	S01004		螺钉M4x7.8	screw	2
24	S01004		螺钉M4x7.8	screw	1
25	31012025		钢丝固定片	stator	1
26	31012070		安装板	dead plate	1
27	S04010		螺钉M4x5.5	screw	4
28	114S20005		螺钉	screw	1
29	30112185		防尘压板	Dust depressor	1
30	30122105		防尘罩	Dust cover	1
31	114S16008		螺母	nut	2
32	W01006		垫片	gasket	1
33	W02002		弹性垫片	gasket	1
34	30130046		电磁铁芯	Electromagnetic iron	1
35	11322008		减震垫	cushioning	1
36	31030007		剪线电磁铁框	Electromagnet box shear	1
37	3103000700		剪线电磁铁组件	Connect the wire	1
38	13822010		电磁铁下垫片	gasket	1
39	302S16010		螺母M8	nut	1
40	30212184		支架	stents	1
41	S01004		螺钉M4x7.8	screw	2
42	30122108		防尘罩	Dust cover	1
43	30112188		防尘压板	Dust depressor	1
44	S01004		螺钉M4x7.8	screw	2
45	31030013		安全开关	Safety switch	1
46	S04010		螺钉M4x5.5	screw	2
47	30112180		下安装板	the mounting plate	1
48	S05019		螺钉	screw	2
49	30111047		电磁铁罩壳	cover	1
50	W01001		垫片	gasket	3
51	S01004		螺钉M4x7.8	screw	3
52	S05005		螺钉M5x12	screw	3
53	001134		O型圈	o-type ring	2
54	N01027		螺母M8	nut	1

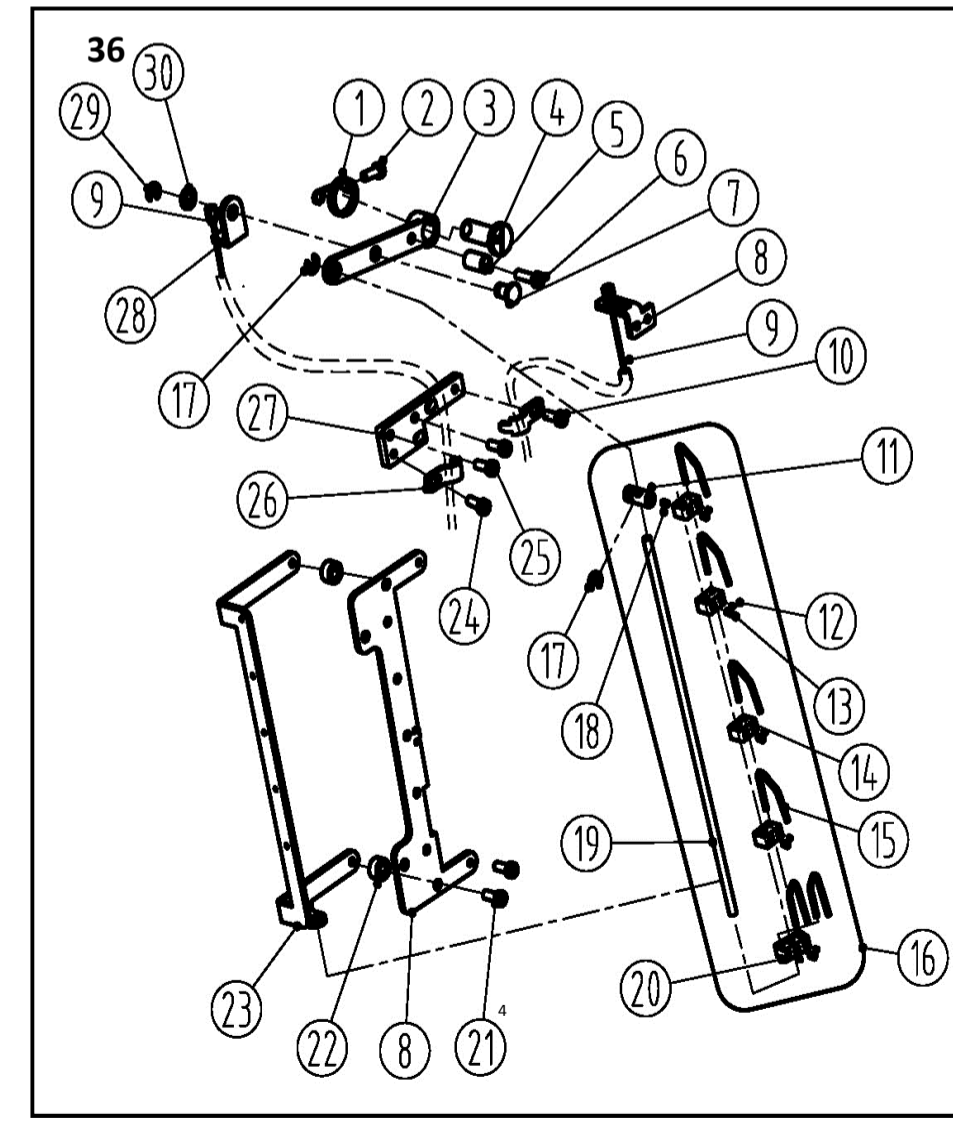
三十六、松线部件 (thread loosening assemblies)

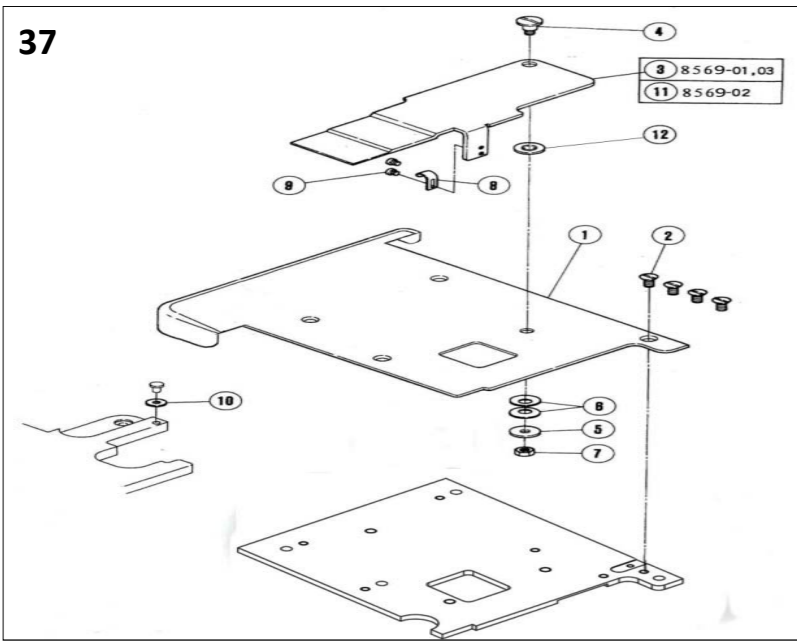
序号 No	件号 Parts No.	参考件号 Ref. Part. No.	名称	Description	数量 Number
1	31027003		松线扭簧	Loose wire torsion	1
2	S01004		螺钉M4x7.8	Screw	1
3	31004002		松线曲柄	Crank	1
4	31026003		轴位销	Shaft pin	1
5	31003005		轴套	Spacer	1
6	S04020		螺钉	Screw	1
7	31029001		连接销	Shaft pin	1
8	3101300700	201068	夹线器	Tension	1
9	3112200200		剪线钢丝软轴	Wire rope	1
10	S01004		螺钉M4x7.8	Screw	1
11	31028003		管座	Holder	1
12	207S14009		螺钉M3x3	Screw	1
13	S01007		螺钉M4x4	Screw	1
14	31009002		打线块	Block	1
15	30129058		松线	Thread releaser	1
16	3100200700		松线组件	Thread releaser	1
17	H05006		卡簧	Ring	1
18	207S14009		螺钉M3x3	Screw	1
19	31002007		挑线杆	Shaft	1
20	31009003		打线块	Block	1
21	S04019		螺钉M4x12	Screw	2
22	31009004		松线垫块	Block	2
23	31013010		松线架	Thread guide plate	1
24	S01004		螺钉M4x7.8	Screw	1
25	S01004		螺钉M4x7.8	Screw	1
26	31012032		压板	Plate	2
27	31012044		支撑板	Plate	1
28	31012055		拉板	Plate	1
29	H05009		卡簧	Ring	1
30	31012059		垫片	Shim	1



三十五、抬压脚部件 (solenoid assemblies)

序号	件号	参考件号	名称	Description	数量
1	3013001500		抬压脚电磁铁组件	solenoid assemblies	1
2	s05023		螺钉M6x10	pin	2
3	w02004		弹性垫圈	washer	2
4	30230010		接插线	patch cord	1

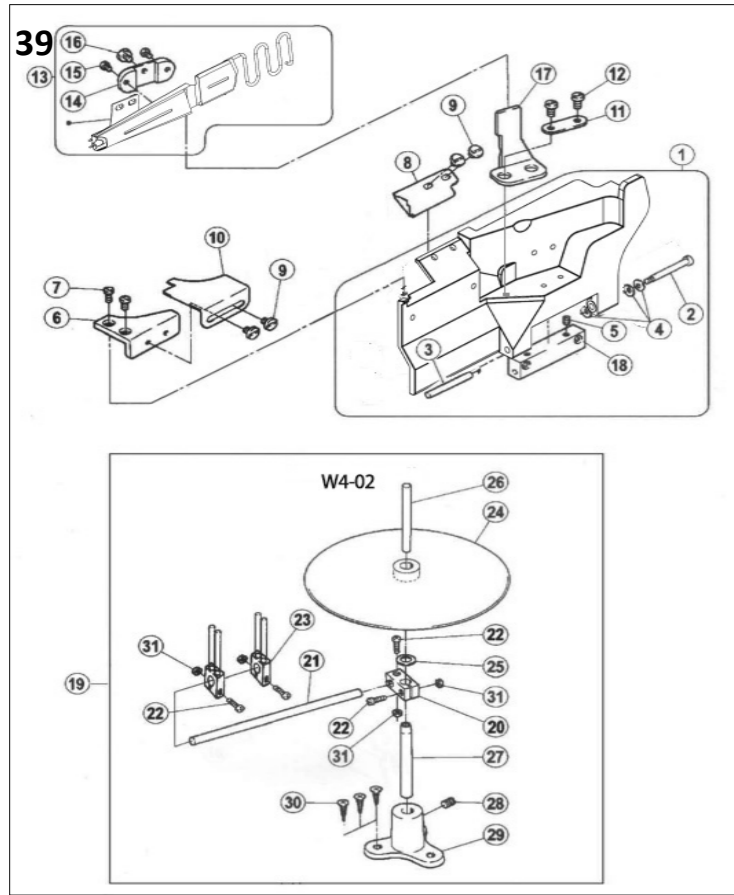




三十七、盖板部件 (cloth plate assemblies)

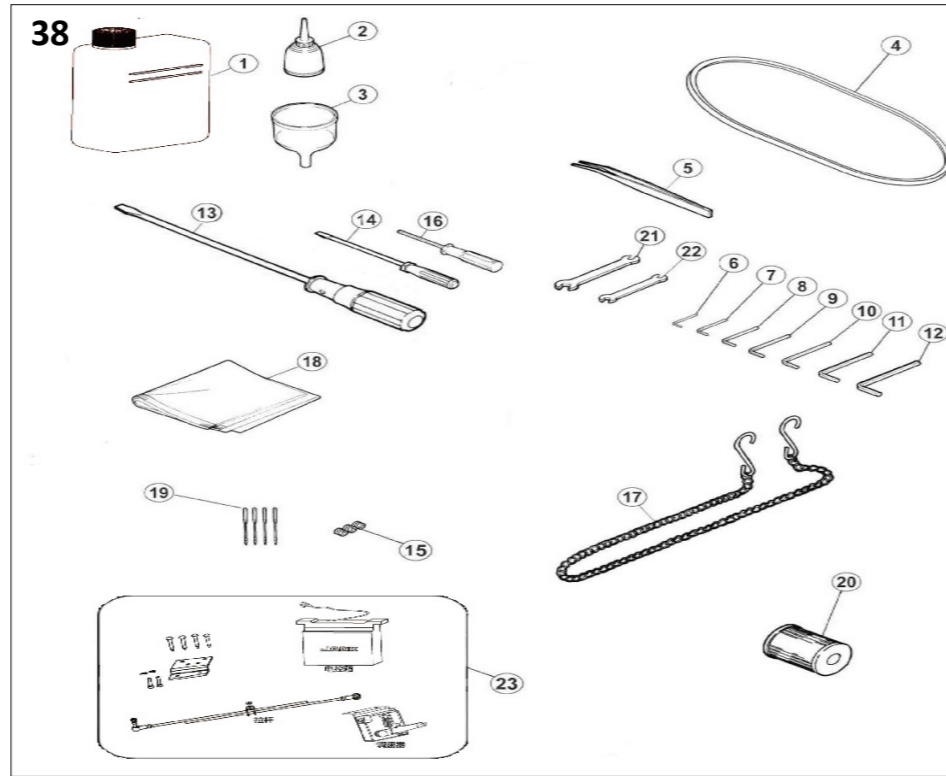
Table with 6 columns: 序号 Ref. No, 公司件号 Part No, 参考件号 Ref. Part. no, 名称, Description, 数量 Number. Lists parts for the cloth plate assembly.

三十九、02专用部件 (02 specific parts)



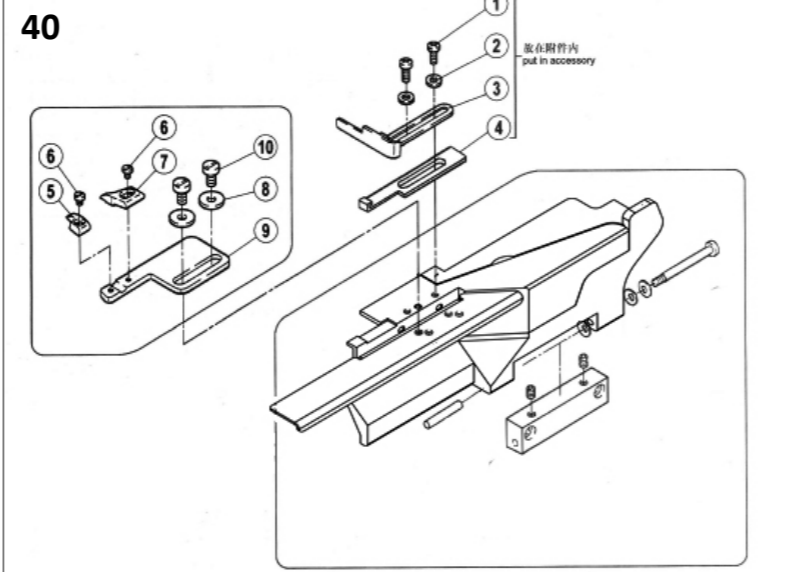
三十九、02专用部件 (02 specific parts)

Table with 6 columns: 序号 Ref. No, 公司件号 Part No, 参考件号 Ref. Part. no, 名称, Description, 数量 Number. Lists various specific parts.



三十八、附件部件 (Accessories assemblies)

Table with 6 columns: 序号 Ref. No, 公司件号 Part No, 参考件号 Ref. Part. no, 名称, Description, 数量 Number. Lists various accessories.



四十、03、08专用部件 (03、08 specific parts)

Table with 6 columns: 序号 Ref. No, 公司件号 Part No, 参考件号 Ref. Part. no, 名称, Description, 数量 Number. Lists specific parts for the HR device.

Table with 6 columns: 序号 Ref. No, 公司件号 Part No, 参考件号 Ref. Part. no, 名称, Description, 数量 Number. Lists additional specific parts.

JACK 杰克

快速服务 100%

产品使用说明书

使用说明书和零件样本下载地址: PLEASE DOWNLOAD THE MANUAL AND SPARE PARTS FROM THE FOLLOWING WEBSITE: ...

产品标准代号: GB/T2380-2013 Standard code of the product: GB/T2380-2013

杰克缝纫机

JACK SEWING MACHINE HTTP://WWW.CHINAJACK.COM

安全须知

对于缝纫机本身各种装置, 我们充分考虑到了它的安全性. 请遵照基本的操作程序, 安全地进行工作.

OBSEVE THESE SAFETY PRECAUTIONS

Though we take the utmost care to produce safe sewing machines and devices, operators should follow these basic safety rules.

注意

使用离合式马达的情况下, 在关闭脚踏后应继续用手转动脚踏, 这时如不注意脚踏转动机构, 脚踏可能会突然动作.

Caution A clutch motor keeps on running for a while by inertia after turning off the power suddenly. If the machine pedal is stepped on unexpectedly, it is dangerous as the machine will start running unexpectedly.



供油

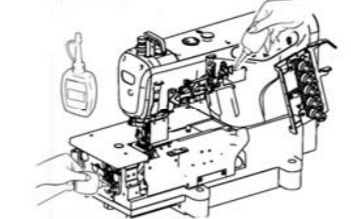
加油量是使油面处于红线与绿线之间为好. 当油面低于红线时, 就要及时补充机油.

Lubrication After filling the oil pan, the oil level should be between (H) and (L) lines. Add oil when the oil level reaches or goes below (L) line.

给HR装置供油

为了阻止布纤维或线被切断, 请尽早给HR装置供油. 注: 机油请使用本公司指定的冷却油.

Filling the HR device with silicon oil Fill the device with oil before it is too low in order to prevent needle thread breakage and fabric damage.

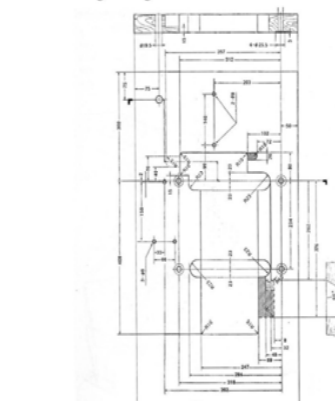


穿线的方法

(1) 请掀起护脚板, 打开机盖 (3处). (2) 抬起穿针线架.

台板加工图

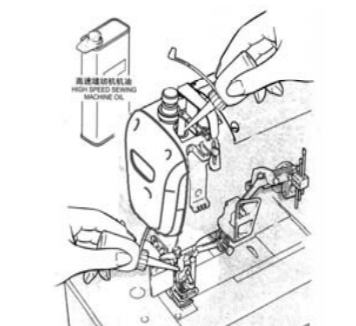
Schematic diagram to the machine table 请参阅下图进行台板的加工 Cut the referring diagram



手动给油 Manual lubrication

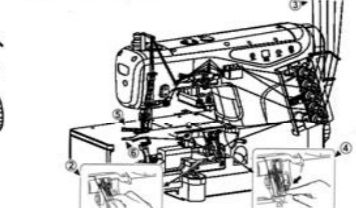
手动给油是在缝纫机最初开始使用时, 或相当一段时间重新开始时使用, 请供给2-3滴油.

Supply 2 or 3 drops of oil by hand when the machine is used for the first time or has been left unused for some time.

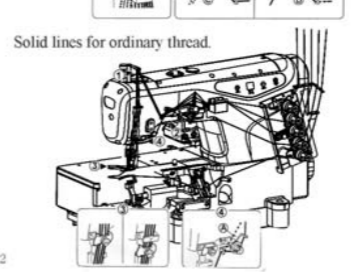
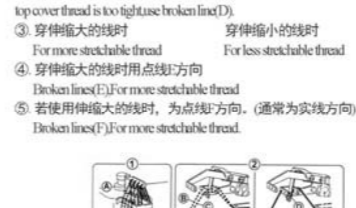


穿线图

穿线图 (2针, 3针用) Threading diagram (1) 若使用伸缩大的线时, 为点线A的方向. (通常为实现方向) Broken lines (A) for more stretchable thread.

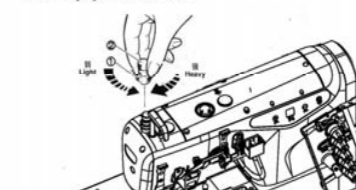


穿线图 (2针, 3针用) Threading diagram (2) 若使用伸缩大的线时, 为点线B的方向. (通常为实现方向) Broken lines (B) for more stretchable thread.



压脚压力调节

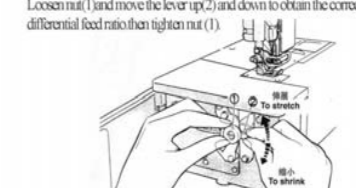
压脚压力的调节是松开螺帽(1)和旋转螺丝(2)来进行的. 在取得平稳针脚的范围, 尽量调得松一些为好.



Adjusting the presser foot pressure Loosen adjusting (1) nut and turn adjusting screw (2) to adjust the presser foot pressure.

差动比的调节

差动比是通过松开螺帽(1), 把调节杆(2)上下移动来进行调节的. 调节时请拧紧螺帽(1).



Adjusting the diff. feed ratio Loosen nut (1) and move the lever up (2) and down to obtain the correct differential feed ratio then tighten nut (1).

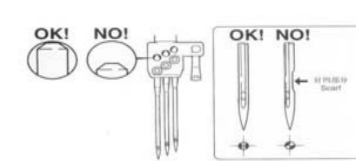
针脚长度的调节

随着针脚调节按钮, 旋转手轮, 针脚调节按钮会陷得更深. 这时边缘针距调节按钮, 边转动手轮, 使校准标记对准所需值的数值. 针脚长度调节. 注: 针脚长度的调节必须在调节差动比之后进行.

Adjusting the stitch length While pressing the push button turn the handwheel to seek the position at which the push button goes further into the depth.

换针

1. 准确辨认针的前后, 请将针凹向着后方, 即背向操作者进行安装. 2. 针要牢固的插到针的最深处.



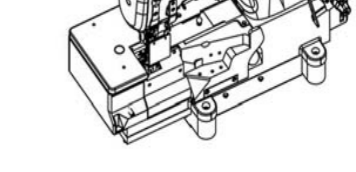
检查机油的循环

Cleaning the oil circulation 1. Check the needle carefully to see that the scarf is turned to the rear of the machine. 2. Insert the needle to the proper depth and fasten securely.



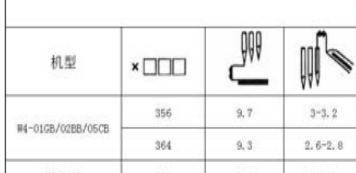
换机油

机油的更换, 请在使用开始一个月后更换一次. 然后, 每6个月更换一次.



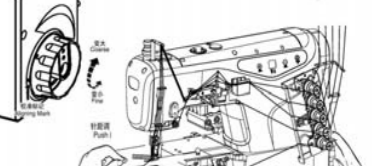
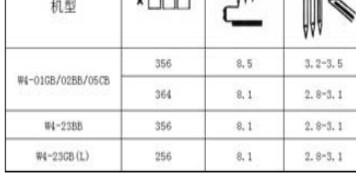
检查机油的循环

Cleaning the oil circulation 1. Check the needle carefully to see that the scarf is turned to the rear of the machine. 2. Insert the needle to the proper depth and fasten securely.



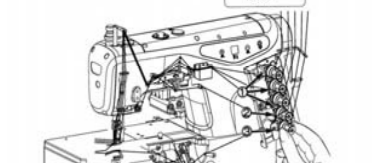
换机油

机油的更换, 请在使用开始一个月后更换一次. 然后, 每6个月更换一次.



线状态的调节 线状态的调节是用针线状态螺帽(1), 上紧时线状态螺帽(2), 下针状态螺帽(3)来进行调节.

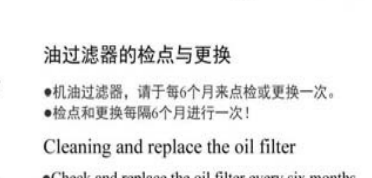
Thread tension Mack tension adjustments with the needle thread knob (1) and cover thread knob (2) and lower thread knob (3).



缝制机的清扫 缝制机的清扫, 以针板及压布脚为主. 清扫时请小心.



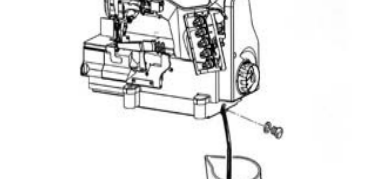
油过滤器的检点与更换 1. 准确辨认针的前后, 请将针凹向着后方, 即背向操作者进行安装. 2. 针要牢固的插到针的最深处.



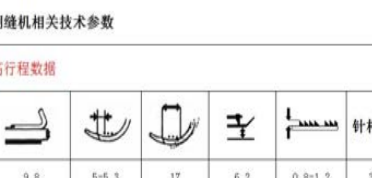
Replacing the needle 1. Check the needle carefully to see that the scarf is turned to the rear of the machine. 2. Insert the needle to the proper depth and fasten securely.



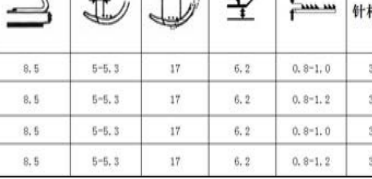
换机油 机油的更换, 请在使用开始一个月后更换一次. 然后, 每6个月更换一次.



检查机油的循环 1. Check the needle carefully to see that the scarf is turned to the rear of the machine. 2. Insert the needle to the proper depth and fasten securely.



换机油 机油的更换, 请在使用开始一个月后更换一次. 然后, 每6个月更换一次.



JACK高速缝制机相关技术参数表. Table with columns for 机型, 针杆行程, and 标准行程数据. Lists technical specifications for different models.

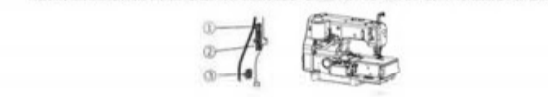
- 安全事项
- 在使用本产品之前，请仔细阅读《操作手册》及所附配件的随机说明手册。
- 本产品必须由受过专业培训的人员安装或操作。

第1章 产品安装

1.1 产品规格

Table with 4 columns: 型号, 电压, 功率, 重量

1.2 接口及接线
请按照图1-1所示将各插头正确插入到控制器上，并确保插头与插座完全接触。



1.3 接线与接地
必须按照系统的接地工程，请合格的电气工程师予以设计。产品通电投入使用前，必须确保电源输入端已接入安全可靠的接地。



第2章 操作面板使用说明

2.1 操作面板的显示说明
除系统工作外，操作面板液晶显示屏将显示出当前的缝制模式、各种参数，以及线迹、针位、线迹、缝速起停等符号。



2.2 操作面板各按钮功能说明
- 1. 参数输入及选择键: 在待机状态下，长按该键进入参数模式。
- 2. 参数选择键: 在参数模式下，短按该键可在参数列表中进行选择。

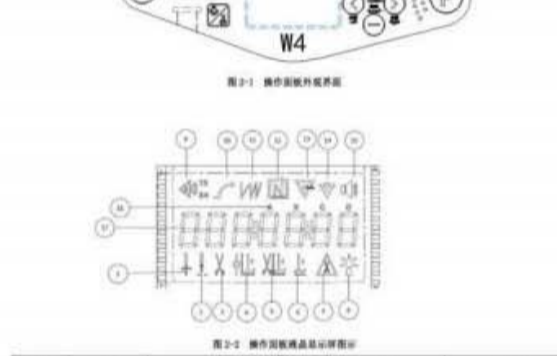


Table mapping icons to their functions: 图标, 说明, 图标, 说明

2.3 复合键说明

Table with 3 columns: 符号, 功能名称, 功能描述

2.4 故障代码表

Table with 3 columns: 故障代码, 代码含义, 解决方法

2.5 安全警告表

Table with 3 columns: 故障代码, 代码含义, 解决方法

第3章 系统参数设置说明

3.1 参数模式

- 1. 待机状态下，长按该键进入参数模式。
2. 短按该键可在参数列表中进行选择。

Main parameter list table with columns: 参数编号, 参数名称, 默认值, 参数描述

3.2 线迹参数表

Table with 4 columns: 参数编号, 参数名称, 参数范围, 参数描述

3.3 安全警告表

Table with 3 columns: 故障代码, 代码含义, 解决方法

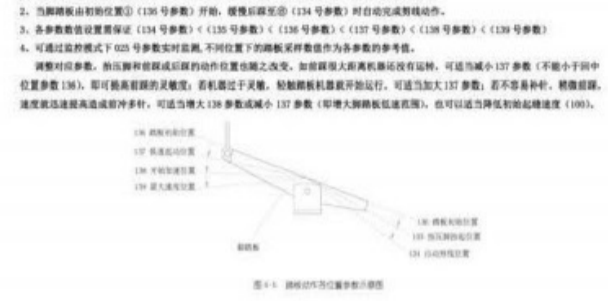
3.4 故障代码表

Table with 3 columns: 故障代码, 代码含义, 解决方法

Table with 3 columns: 故障代码, 代码含义, 解决方法

第4章 脚踏板灵敏度调整

脚踏板灵敏度调整(130号参数)：脚踏板灵敏度(130号参数)：脚踏板灵敏度(130号参数)：脚踏板灵敏度(130号参数)。



W4 Operation Manual

Safety Instruction

- Please read this manual carefully, also with related manual for the machinery before use the controller.
For installing and operating the controller properly and safely, qualified engineers are required.

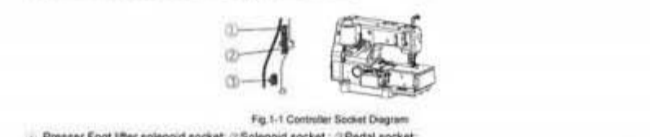
1 Installation Instructions

1.1 Product specifications

Table with 2 columns: Product Type, Power frequency

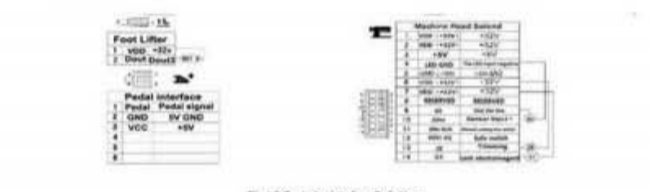
1.2 Interface plug connection

Connecting the plugs of pedastal machine head to the corresponding sockets at the back of controller, as Figure 1-2. Please check and confirm the plug is inserted firmly.



Presser Foot lifter solenoid socket; Solenoid socket; Pedal socket.

If it is difficult to insert plug into socket, please check whether they are matching with each other, or the inserting direction or needle insertion direction is correct!



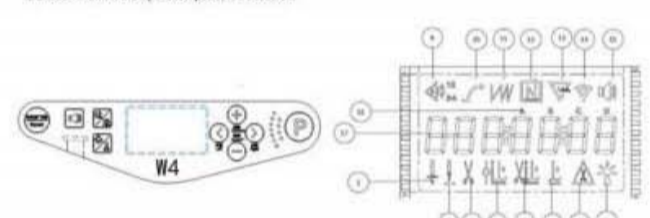
1.3 Wiring and Grounding

We must prepare the system grounding project, a qualified electrical engineer is requested for the construction. Product is energized and ready for use, you must ensure that the power outlet the AC input is securely grounded.

2 Operation Panel Instructions

2.1 Operation Panel Display Instruction

According to the system working state, the LCD module of operation panel will display the current sewing mode, parameters, start / end back tacking, and presser foot, needle position, trimming, soft start sewing etc.



2.2 Key Functions

Table with 3 columns: Key, Name, Description

2.3 Monitor mode

Table with 3 columns: No., Description, No., Description

2.4 The warning message

Table with 3 columns: Alarm code, Description, Corrective

2.3 Monitor mode

Table with 4 columns: The serial number, Appearance of the combination, Name, Functional description

3 System parameters setting list

3.1 Parameter mode

Table with 4 columns: NO., Range, Default, Description

3.2 Monitor mode

Table with 4 columns: No., Description, No., Description

3.3 The warning message

Table with 3 columns: Alarm code, Description, Corrective

Table with 3 columns: SLEEP, Dormancy, Shut down the system power supply...

3.4 Error mode

If the error code appears, please check the following items first:

- 1. Make sure the machine has been connected correctly.
2. Confirm that the control box match with the machine head.
3. Confirm factory reset is accurate.

Table with 3 columns: Error Code, Description, Solution

4 Pedal sensitivity adjustment

Pedal sensitivity starts from the initial position (p.130) where the motor stops, slowly stepped forward to the low speed point (p.137) where the motor runs at the minimum speed (p.100), proceeding to the accelerated point (p.138) where the motor start faster, until the max speed point (p.139) where the motor run up to the maximum speed (p.101).

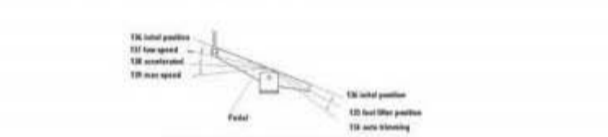


Fig. 4-1 pedal movement of each position parameter

杰克缝纫机股份有限公司
杰克缝纫机
全球销量遥遥领先

Company address, phone numbers, website, and QR code.