

UH SERIES

寶獅牌工業用縫紉機 INDUSTRIAL SEWING MACHINE

MODEL

UH80B3

UH8003

UH8013

UH8023

UH8083

UH8084

UH8004

UH8024

UH8094

UH8005

UH8045



ULTRA HIGH SPEED OVERLOCK MACHINE

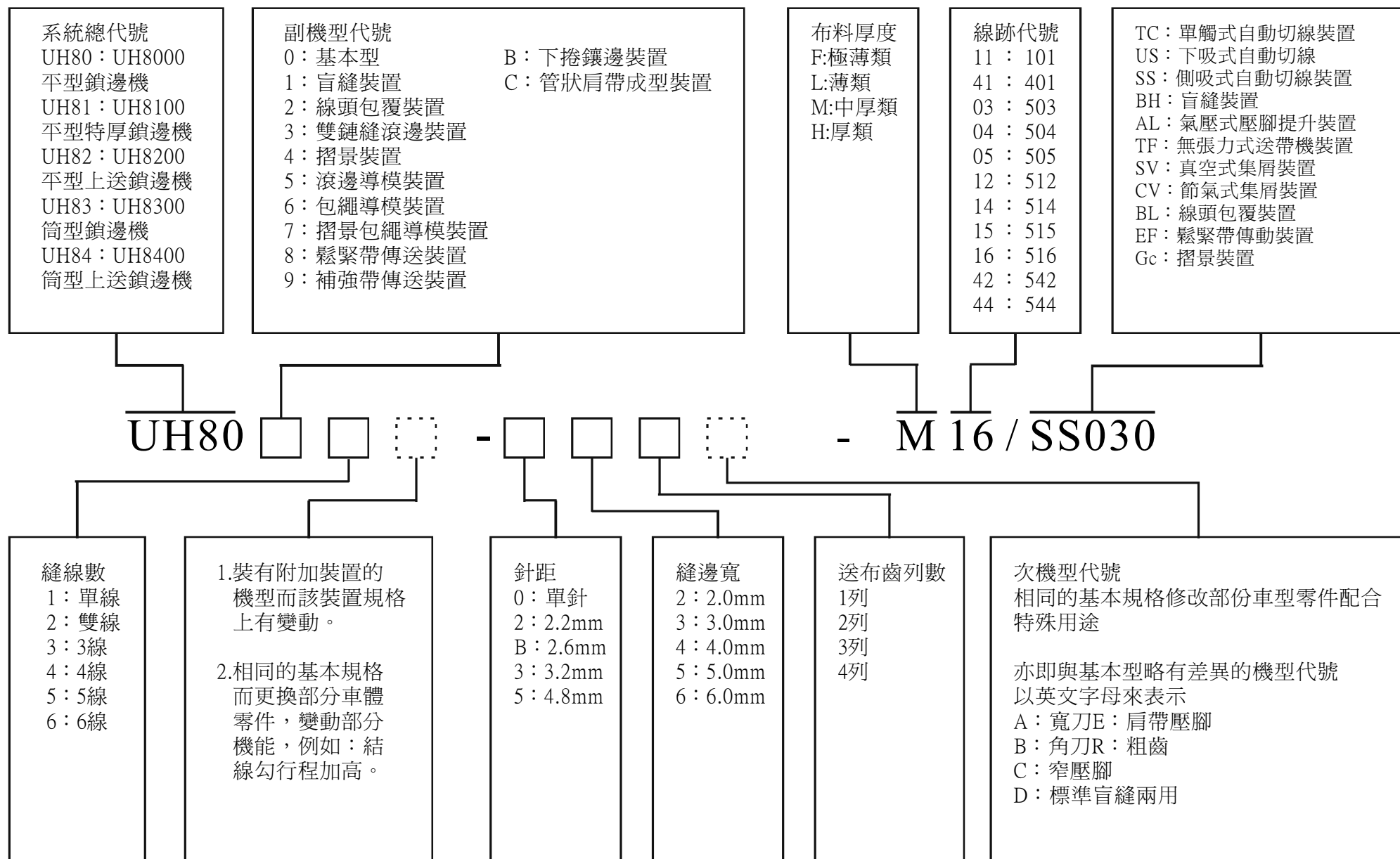
Parts List



精機機械廠股份有限公司 CHING CHI MACHINE CO., LTD
<http://www.kingtexsewing.com.tw>

Ver 3.5 2004.04
NO.UH6305-3.5-04-04

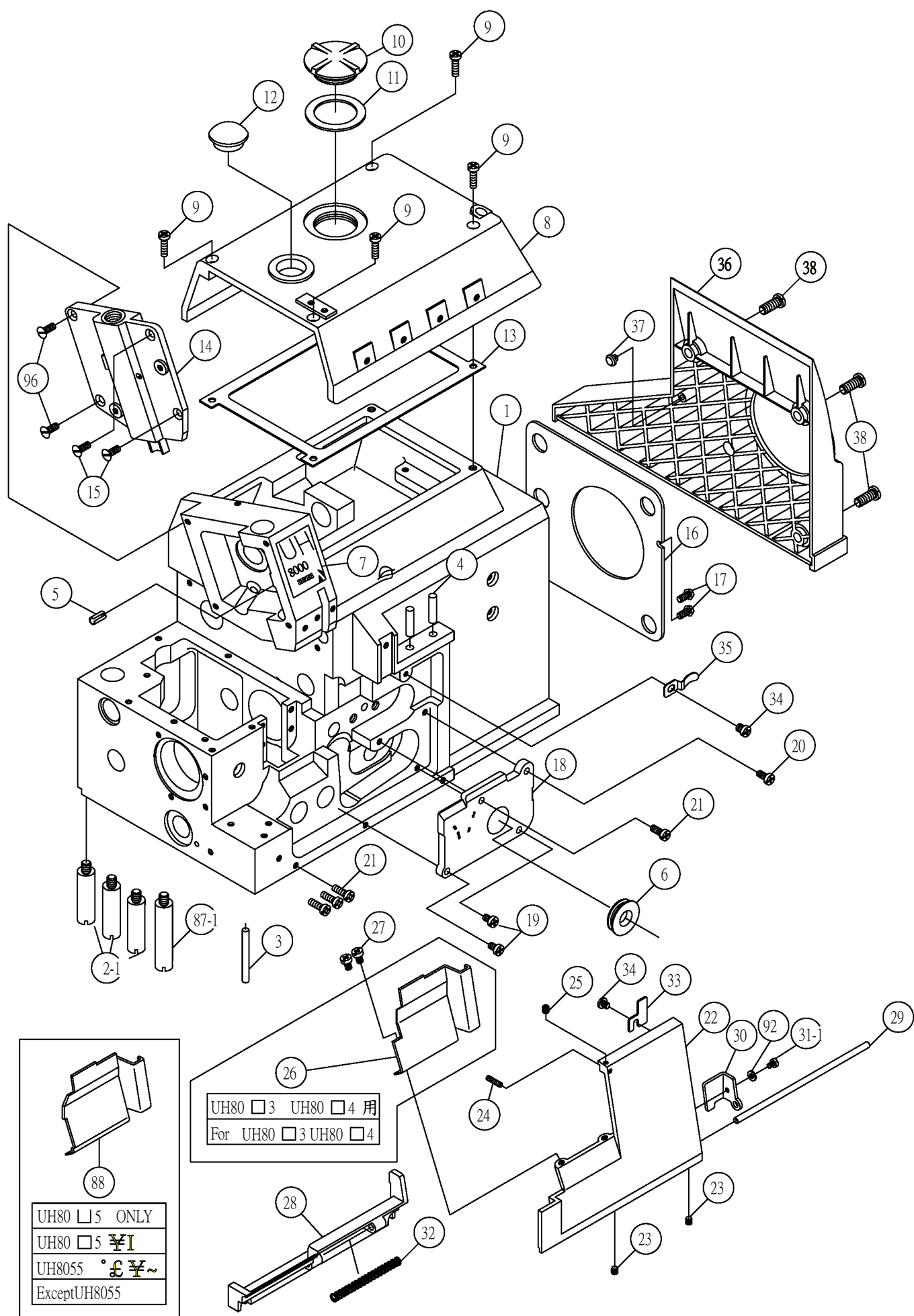
Uh8000系列機型車型編號系統 Description of the uh8000 serier code



目錄 TABLE OF CONTENTS

序號	名稱	頁次
Ref. No.	Description	Page Number
1 .	本體與外裝零件（一） Frame And Cover(1)-----	2
1 .	本體與外裝零件（二） Frame And Cover(2)-----	4
2 .	軸襯及孔塞 Bushing And Plug-----	6
3 .	主軸及嵌附的零件 Main Shaft Components-----	8
4 .	上，下結線鉤傳動機構 Upper & Lower Looper Driving Mechanism-----	10
5 .	鏈結線鉤傳動機構 Chain Looper Driving Mechanism-----	12
6 .	針棒傳動機構 Needle Bar Components-----	14
7 .	上，下刀修邊機構 Upper And Lower Knife Components-----	16
8 .	壓腳提昇機構 Press Foot Components-----	18
9 .	進給驅動機構 Feed Mechanism Components-----	20
10 .	縫線張力調節機構 Thread Tension Components-----	22
	(UH80□ 5) (For UH80□ 5)	
10-1 .	縫線張力調節機構 Thread Tension Components-----	24
	(UH80□ 3 UH80□ 4用) (For UH80□ 3 UH80□ 4)	
11 .	導線揚線機構 Thread Guide And Thread Takeup-----	26
12 .	潤滑冷卻機構 Lubrication And Cooling Mechanism-----	28
13 .	半沉式車板裝置 Parts For Semi-Submerged Installation-----	30
14 .	備品，工具及隨車附件 Accessories-----	32

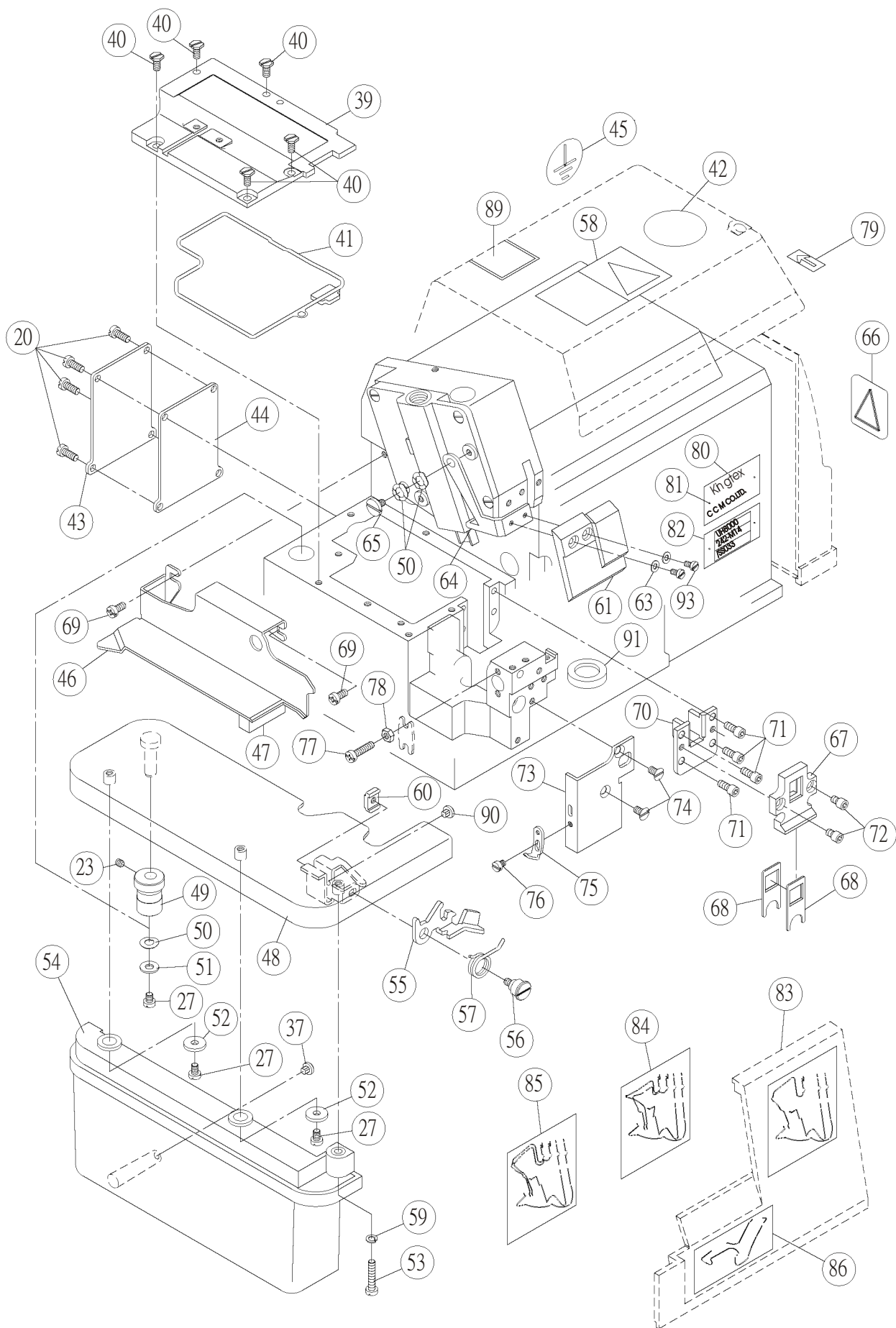
1. 本體與外裝零件 FRAME AND COVER (一)



1.本體與外裝零件(一) Frame And Cover (一)

序號	物料編號	名 稱	單位用量
Ref. No.	Parts Number	Description	Amt.Req.
1	2120000101	縫機本體 Framee -----	1
2	2120000102	-----	停用
2-1	21200001021	支柱 Frame Support -----	3
3	2120000103	回油管 Pipe -----	1
4	2100000212	導線管 Thread Guide -----	2
5	90SP0512	定位銷 Pin -----	1
6	2120000106	防塵油封 Gasket -----	1
7	66479V1	銘板 Name Plate -----	1
8	2120000108	上蓋 Top Cover -----	1
9	8MC04281407D	螺絲 Screw -----	4
10	2120000110	油窗 Oil Sight Window -----	1
11	2120000111	油封 Oil Seal -----	1
12	2120000112	孔塞 Plug -----	1
13	2120000113	防漏墊片 Gasket -----	1
14	2120000114	針棒側蓋 Side Cover -----	1
15	8ME04281008A	螺絲 Screw -----	2
16	2120000116	風扇封蓋 Fan Cover -----	1
17	8MC04280807D	螺絲 Screw -----	2
18	2120000118	封蓋 Cover -----	1
19	8MC04280807D	螺絲 Screw -----	2
20	8MC04281007D	螺絲 Screw -----	5
21	8MC04281207D	螺絲 Screw -----	3
22	2120000122	前蓋 Front Cover -----	1
23	8MN04280400A	螺絲 Screw -----	3
24	8MN03201200A	螺絲 Screw -----	1
25	8MN03200400A	螺絲 Screw -----	1
26	2120030126	導布屑 Chip Guard -----	4
27	8MC04280607D	螺絲 Screw -----	5
28	2120000128	鉸鏈 Hinge -----	1
29	2120000129	樞銷 Pin -----	1
30	2120000130	前蓋側檔 Front Cover Hook -----	1
31	8MB03200406A	-----	停用
31-1	8MB03200606A	螺絲 Screw -----	1
32	2120000132	彈簧 Spring -----	1
33	2120000133	鎖鉤 Hook -----	1
34	8MC04280507D	螺絲 Screw -----	2
35	2120000135	鎖扣 Latch -----	1
36	2120000136	皮帶護蓋 Belt Cover -----	1
37	2120000137	防震橡膠墊 Cushion Rubber -----	2
38	8MB06401409A	螺樁 Screw -----	3
39	2120000139	護蓋 Feed Mechanish Cover -----	1
40	8MK04280807A	螺絲 Screw -----	5
41	2120000141	油封 Gasket -----	1
42	66453V6	安全指示貼紙 Name Plate -----	1
43	2120000143	背蓋 Cover -----	1
44	2120000144	防漏墊片 Gasket -----	1
45	66453V1	地線貼紙 Name Plate -----	1
46	2120000146	布板側檔 Fabric Guard -----	1
47	2120000147	減震墊 Rubber Plug -----	1
48	2120000148	布板 Cloth plate -----	1

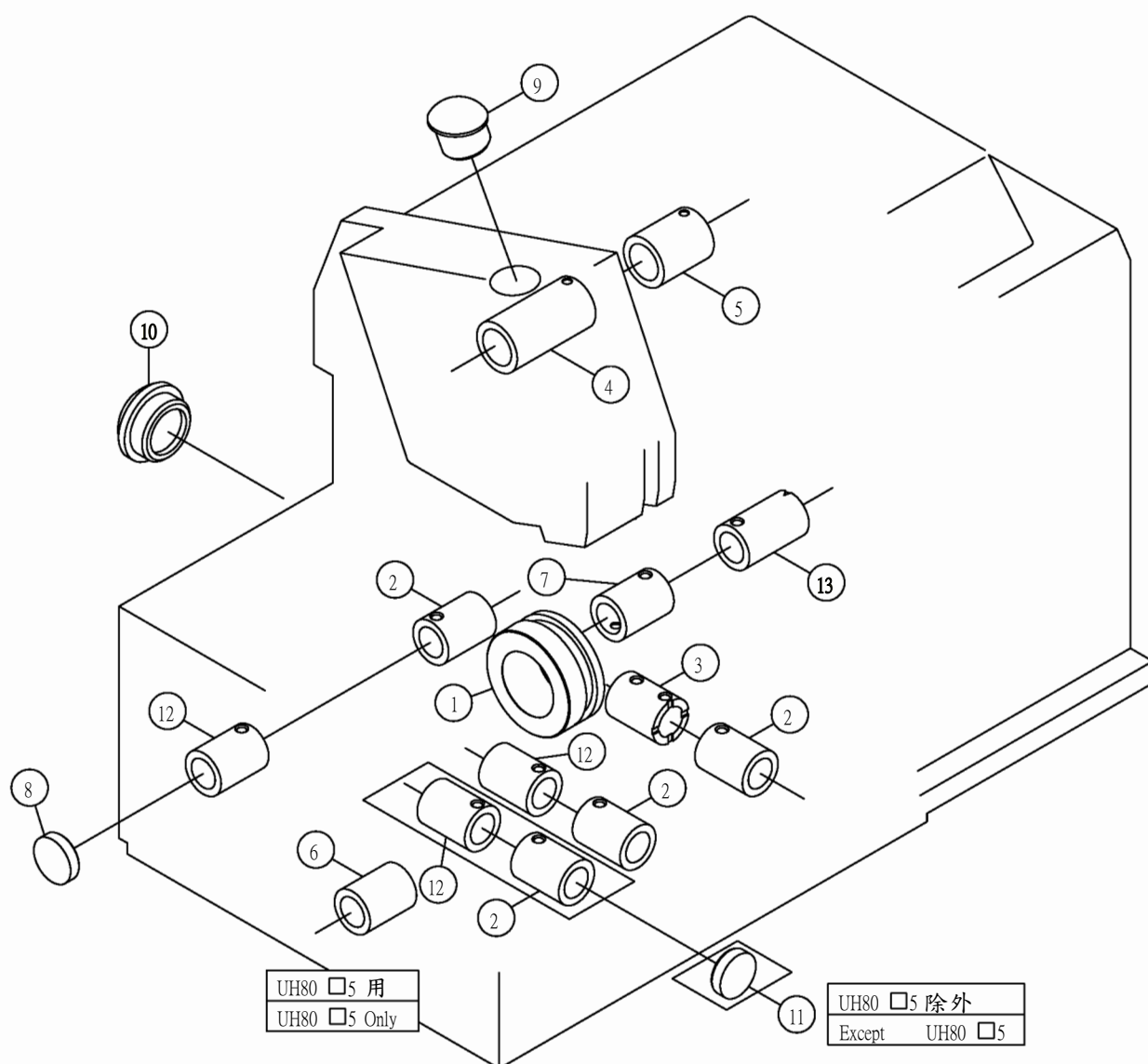
1. 本體與外裝零件 FRAME AND COVER (二)



1.本體與外裝零件(二) Frame And Cover (二)

序號	物料編號	名 稱	單位用量
Ref. No.	Parts Number	Description	Amt.Req.
49	2120000149	偏心套管 Eccentric Bushing -----	1
50	2120000150	波形墊圈 Wsaher -----	1
51	2120000151	墊圈 Wsaher -----	1
52	2200000908	墊圈 Wsaher -----	2
53	8MC04282007D	螺絲 Screw -----	1
54	2120000154	布板架 Cloth Plate Cover -----	1
55	2120000155	鎖鉤 Hook -----	1
56	2120000156	螺樁 Screw -----	1
57	2120000157	彈簧 Spring Washer -----	1
58	66453V2	安全指示貼紙 Name Plate -----	1
59	2120000159	墊圈 Washer -----	1
60	2120000160	夾板 Clamp -----	1
61	2120000161	護目鏡 Eye Guard -----	1
62	8MB03200606A	-----	停用
63	90PW040	墊圈 Washer -----	2
64	2120000164	支架 Bracket -----	1
65	8MB04280711E	螺樁 Screw -----	1
66	66453V3	安全指示貼紙 Name Plate -----	1
67	2120000167	油封座 Seal Guide -----	1
68	2120000168	油封 Oil Seal -----	2
69	8MC04280608D	螺絲 Screw -----	2
70	2120000170	導軌 Left Feed Bar Guide -----	1
71	8MM04280907A	螺絲 Screw -----	4
72	8MM04280507A	螺絲 Screw -----	2
73	2120000173	封蓋 Cover -----	1
74	8MF04280807C	螺絲 Screw -----	2
75	2120000175	鎖鉤 Hook -----	1
76	8MB85240406A	螺絲 Screw -----	1
77	8MC04281607D	螺絲 Screw -----	1
78	8MA04280307A	螺帽 Nut -----	1
79	66453-5	-----	停用
80	66479V2	銘板 Name Plate -----	1
81	66620	鉚釘 Rivet -----	2
82	66479V3	銘板 Type Plate -----	1
83	66440-3	穿線貼紙 Threading Diagram For Uh8003 -----	1
84	66440-4	穿線貼紙 Threading Diagram For Uh8004 -----	1
85	66440-5	穿線貼紙 Threading Diagram For Uh8005 -----	1
86	66440-6	穿線貼紙 Threading Diagram For UH8005 -----	1
87	2120000187	-----	停用
87-1	21200001871	支柱 Frame Support -----	1
88	2120050188	導布屑 Chip Guard -----	1
89	66453V4	安全指示貼紙 Name Plate -----	1
90	2120000190	防震橡膠墊 Cushion Rubber -----	1
91	2120000191	-----	停用
92	90PW040	墊圈 Washrer -----	1
93	8MB03200505K	螺絲 Screw -----	2
94	2120000194	-----	停用
95	2120000195	-----	停用
96	8ME04281408A	螺絲 Screw -----	2

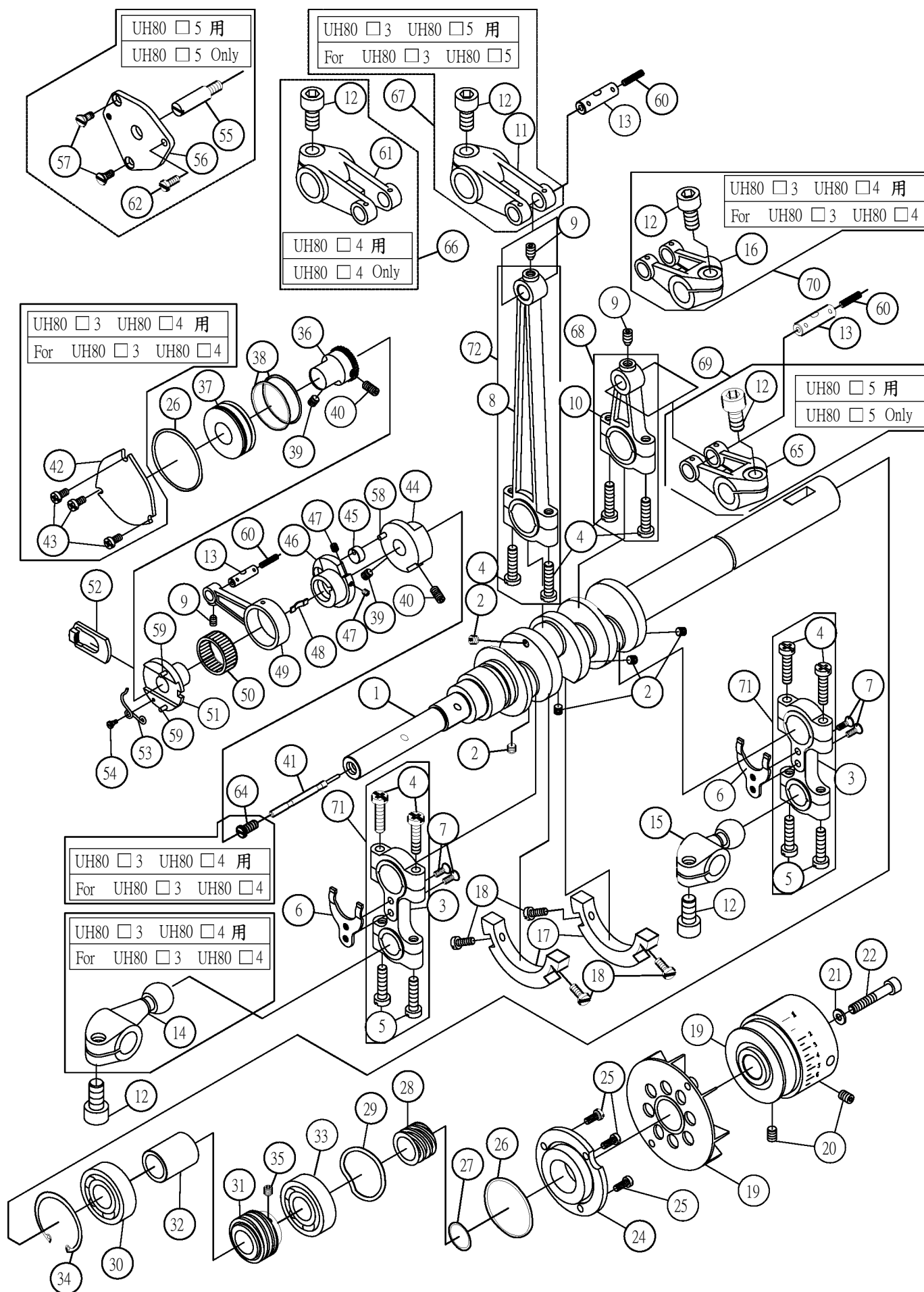
2. 軸襯及孔塞 BUSHING AND PLUG



2.軸襯及孔塞 Bushing And Plug

序號	物料編號	名 稱	單位用量
Ref. No.	Parts Number	Description	Amt.Req.
1	2120000201	軸襯 Bushing -----	1
2	2120000202	軸襯 Bushing -----	3(3、4) 4(5)
3	2120000203	軸襯 Bushing -----	1
4	2120000204	軸襯 Bushing -----	1
5	2120000205	軸襯 Bushing -----	1
6	2120000206	軸襯 Bushing -----	1
7	2120000207	軸襯 Bushing -----	1
8	2120000208	孔塞 Plug -----	1
9	2120000209	孔塞 Plug -----	1
10	2120000210	孔塞 Plug -----	1
11	2120000208	孔塞 Plug -----	1
12	2120000212	軸襯 Bushing -----	2(3、4) 3(5)
13	2120000213	軸襯 Bushing -----	1

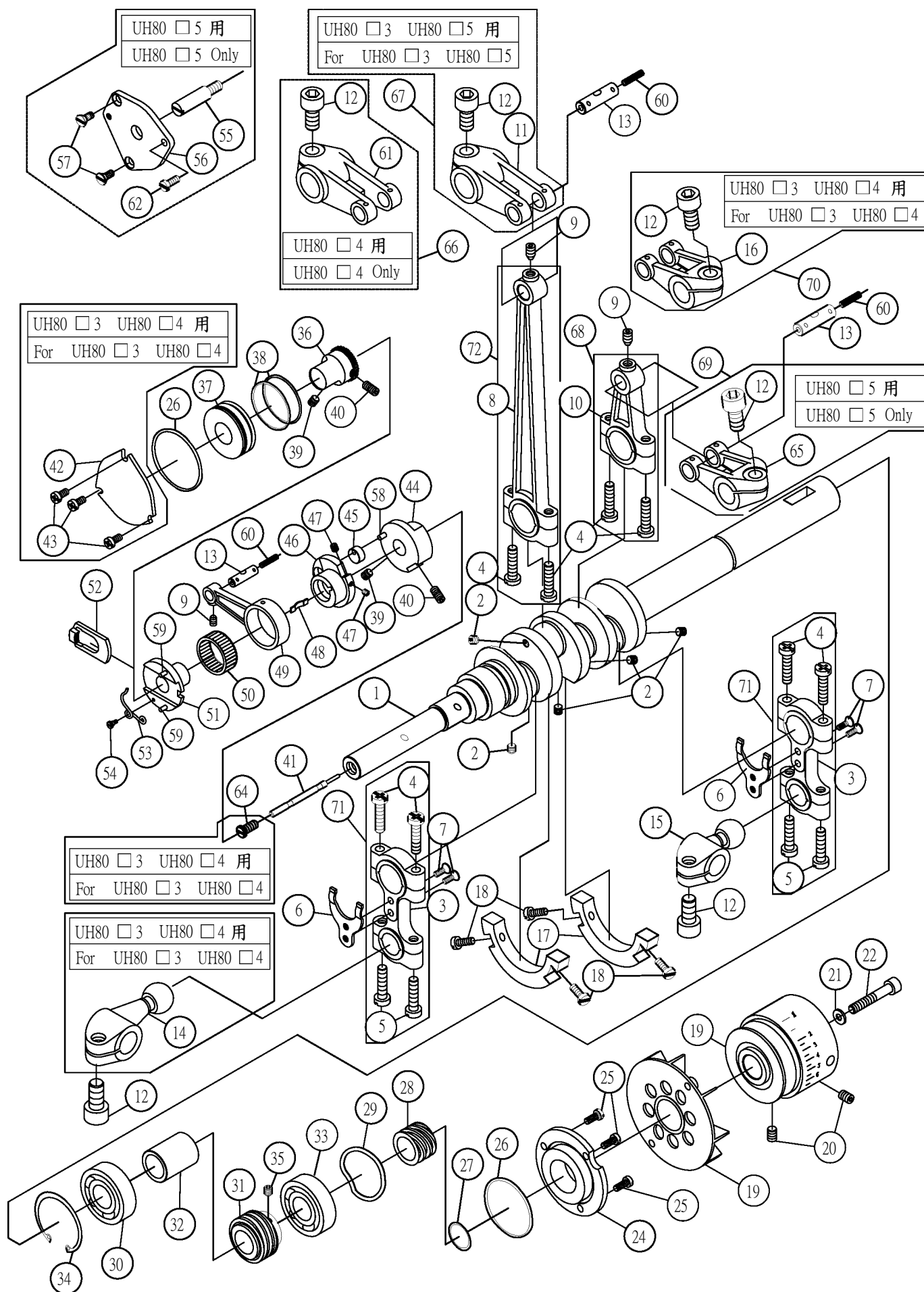
3. 主軸及嵌附零件 MAIN SHAFT COMPONENTS



3.主軸及嵌附零件 Main Shaft Components

序號	物料編號	名 稱	單位用量
Ref. No.	Parts Number	Description	Amt.Req.
1	2120000301	主軸 Crankshafe -----	1
2	8MN85240300A	螺絲 Screw -----	7
3	2120000303	連桿 Looper Rod -----	2
4	8MB04281507B	螺絲 Screw -----	8
5	8MC04281407D	螺絲 Screw -----	4
6	2100000335	止動叉 Guide -----	2
7	8MB03200505K	螺絲 Screw -----	4
8	2120000308	連桿 Needle Bar Rod -----	1
9	8MN04280500C	螺絲 Screw -----	3
10	2120000310	連桿 Upper Kniferod -----	1
11	2120030311	曲柄 Level -----	1
12	8MM06401210A	螺絲 Screw -----	4
13	2120000313	曲柄銷 Level Pin -----	3
14	2120030314	球軸曲柄 Crank -----	1
15	2120000315	球頭曲柄 Crank -----	1
16	2120000316	曲柄 Level -----	1
17	2120000317	配重 Balance Weight -----	2
18	8MB03200606K	螺絲 Screw -----	4
19	2120000319	手輪 Pulley -----	1
20	8MN06400800A	螺絲 Screw -----	2
21	2200000910	墊圈 Spring Washer -----	1
22	8MM06403510B	螺絲 Screw -----	1
23	2120000323	風扇 Fan -----	1
24	2120000324	封蓋 Thrust Holder -----	1
25	8MC04281007D	螺絲 Screw -----	3
26	2120000326	油環 O Ring -----	2
27	2120000327	油環 O Ring -----	1
28	2120000328	聚油環 Position Lock Ring -----	1
29	2100000316	簧片 Washer -----	1
30	90BB174012	滾珠軸承 Ball Bearing -----	1
31	2120000331	蝸桿 Worm -----	1
32	2120000332	隔環 Collar -----	1
33	90BB1740121	滾珠軸承 Ball Bearing -----	1
34	2120000334	扣環 Ring -----	1
35	8MN05320500E	螺絲 Screw -----	1
36	2120000336	離合齒輪 Ratchat Gear -----	1
37	90BB1535112	滾珠軸承 Ball Bearing -----	1
38	2120000338	油環 O Ring -----	2
39	8MN05320500E	螺絲 Screw -----	2
40	8MN05321000A	螺絲 Screw -----	2
41	2120000341	填隙銷 Pin -----	1
42	2120030342	封蓋 Cover -----	1
43	8MC04280807D	螺絲 Screw -----	3
44	2120000344	基準定位輪 Regulator -----	1
45	2120000345	牽引導輪 Feed Pin -----	1
46	2120000346	變距偏心輪 Eccentric -----	1
47	8MN03200400A	螺絲 Screw -----	2
48	2120000348	簧片 Spring -----	1
49	2120000349	連桿 Connection -----	1
50	90NB222610	滾針軸承 Needle Bearing -----	1
51	2120000351	偏心輪 Eccentric -----	1
52	2120000352	離合板 Pawl -----	1
53	2120000353	彈簧 Spring -----	1
54	2120000354	螺樁 Stud -----	1
55	2120050355	揚線凸輪軸 Shaft -----	1
56	2120050356	封蓋 Cover -----	1
57	8ME04281008A	螺絲 Screw -----	2
58	90ST0312	銷 Pin -----	1
59	90SP7510	彈簧銷 Pin -----	2
60	66800	油線 Oil Wick -----	3

3. 主軸及嵌附零件 MAIN SHAFT COMPONENTS

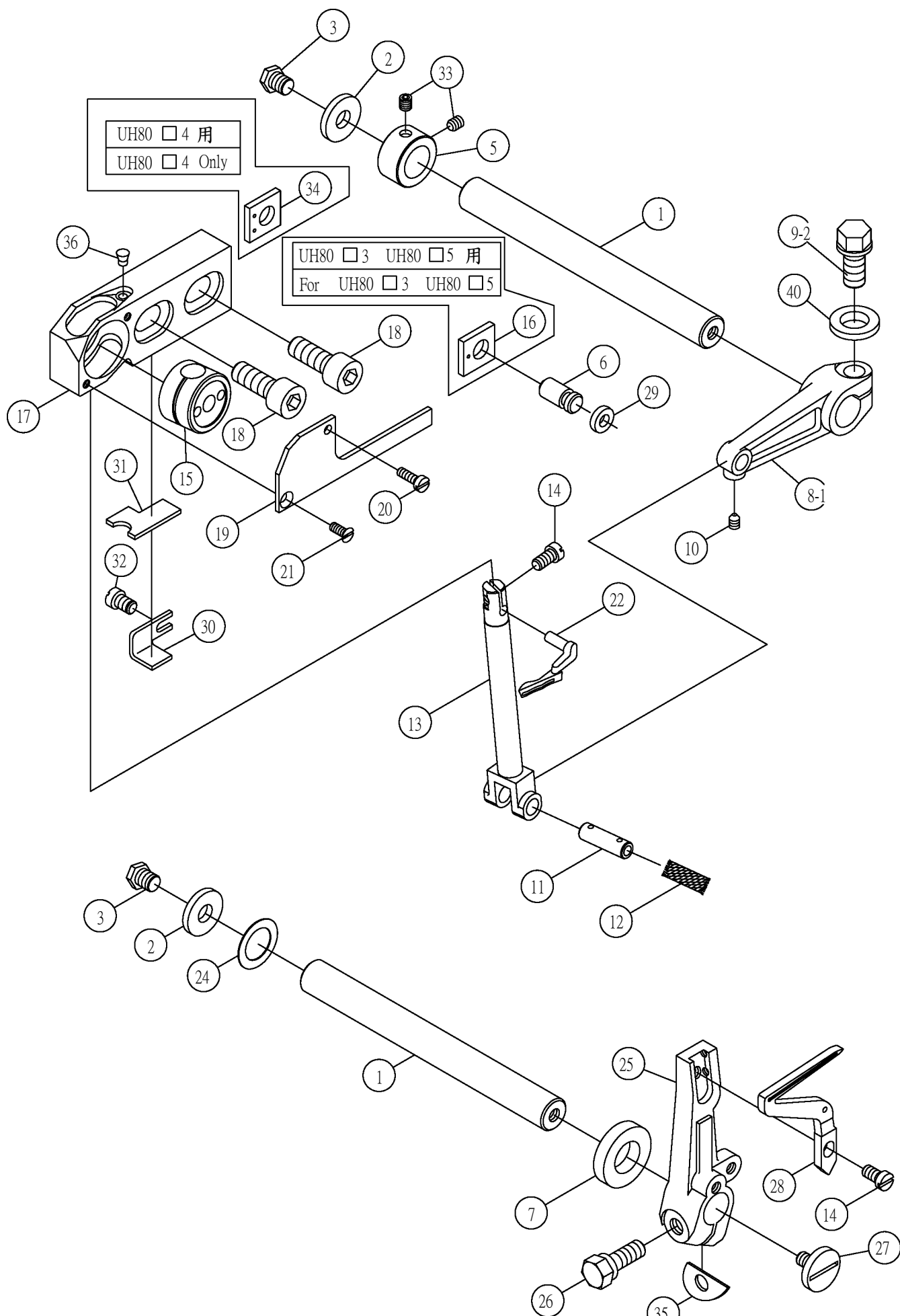


3.主軸及嵌附零件 Main Shaft Components

序號	物料編號	名 稱	單位用量
Ref. No.	Parts Number	Description	Amt.Req.
61	2120040361	曲柄 Level -----	1
62	8MB04281008K	螺絲 Screw -----	1
63	8MN06400500A	-----	停用
64	8MB06401309A	螺絲 Screw -----	1
65	2120050365	曲柄 Level -----	1
66	212A0040361	曲柄組 Level Asm -----	
67	212A0030311	曲柄組 Level Asm -----	
68	212A0000310	連桿組 Upper Kniferod Asm -----	
69	212A0050365	曲柄組 Level Asm -----	
70	212A0000316	曲柄組 Level Asm -----	
71	212A0000303	連桿組 Upper Kniferod Asm -----	
72	212A0000308	連桿組 Upper Kniferod Asm -----	

4. 上下結線鉤傳動機構

Upper & Lower Looper Driving Mechanism

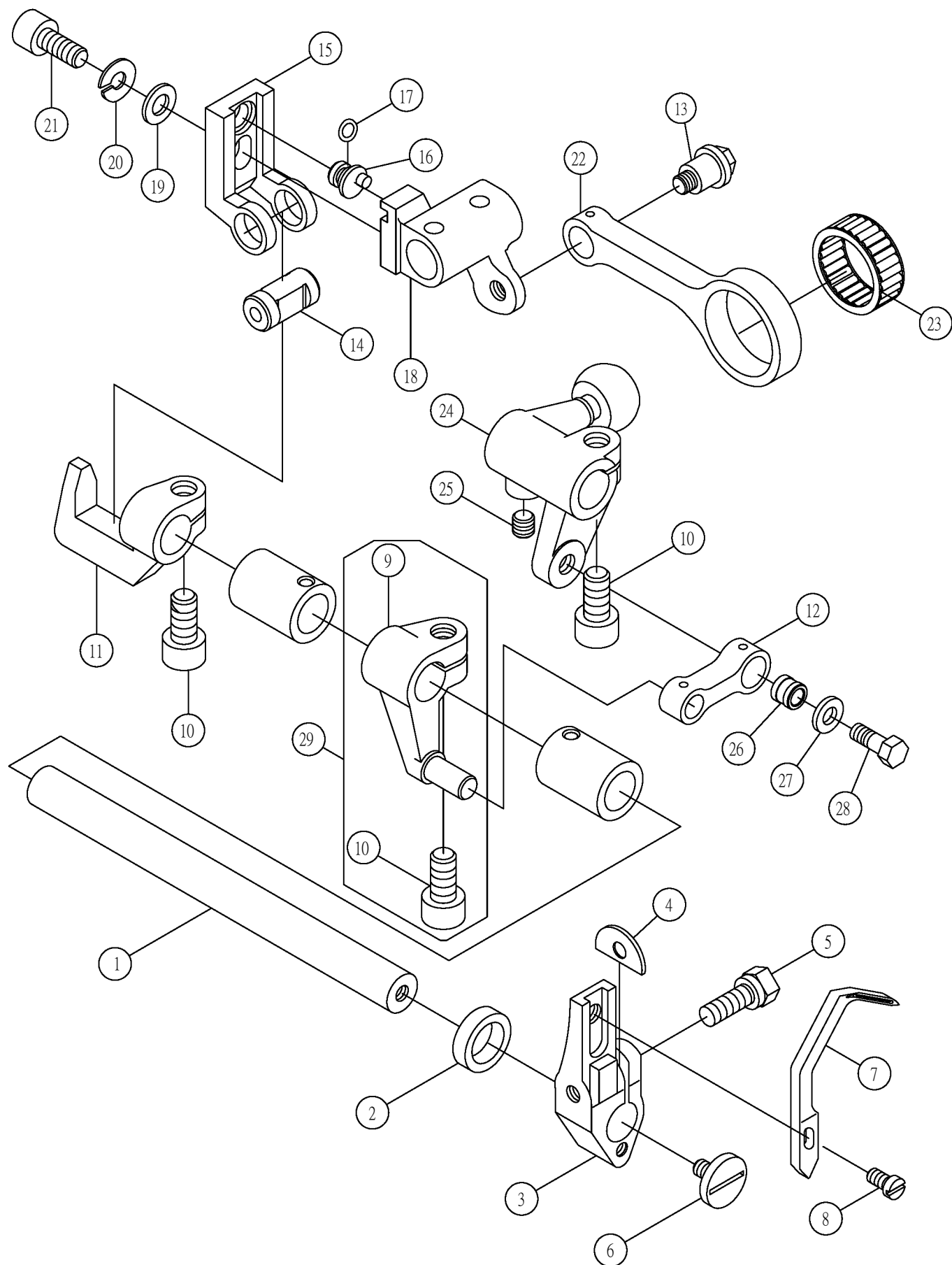


4. 上、下結線鉤傳動機構 Upper & Lower Looper Driving Mechanism

序號	物料編號	名稱	單位用量
Ref. No.	Parts Number	Description	Amt. Req.
1	2120000401	軸 Shaft -----	2
2	2120000402	止推墊圈 Washer -----	2
3	8MK05320808A	螺絲 Screw -----	2
4	90SW050	-----	停用
5	2120000405	變距隔環 Spacer -----	1
6	2100000750	定位銷 Pin -----	1
7	2120000407	油封 Oil Seal -----	1
8	2120000408	-----	停用
8-1	21200004081	曲柄 Lever -----	1
9-1	8MK06301208J	-----	停用
9-2	8MK06301408J	螺絲 Screw -----	1
10	8MN03200400C	螺絲 Screw -----	1
11	2120000411	曲柄銷 Pin -----	1
12	66800	油線 Oil Wick -----	1
13	2120000413	上結線鉤座 Upper Looper Holder -----	1
14	8MB85240705A	螺絲 Screw -----	2
15	2120000415	擺動軸承 Upper Looper Holder Guide -----	1
16	2100030749	定位片 Stopper -----	1
17	2120000417	軸承座 Upper Looper Holder Base -----	1
18	8MM06401610A	螺絲 Screw -----	2
19	2120000419	封蓋 Cover -----	1
20	8MB75180805A	螺絲 Screw -----	1
21	8ME75180605A	螺絲 Screw -----	1
22	-----	上結線鉤 Upper Looper -----	See Page APP-1
23	66453-8	-----	停用
24	2120000424	墊圈 Spring Washer -----	1
25	2120000425	擺動臂 Lower looper Arm -----	1
26	8MK05321308C	螺絲 Screw -----	1
27	8MB04280713A	螺絲 Screw -----	1
28	-----	下結線鉤 Lower Looper -----	See Page APP-1
29	90OR040	油環 Spacer -----	1
30	2120000430	壓板 Cover -----	1
31	2120000431	羊毛氈 Felt -----	1
32	8MB03200406A	螺絲 Screw -----	1
33	8MN04280400A	螺絲 Screw -----	2
34	2100040752	定位片 Stopper -----	1
35	2100000715	限位墊片 Spacer -----	1
36	2120000436	濾心孔塞 Plug -----	1
37	2120000437	-----	停用
38	2120000438	-----	停用
39	2120000439	-----	停用
40	2120000440	墊圈 Spring Washer -----	1

5. 鏈結線鉤傳動機構 (UH80 □5 用)

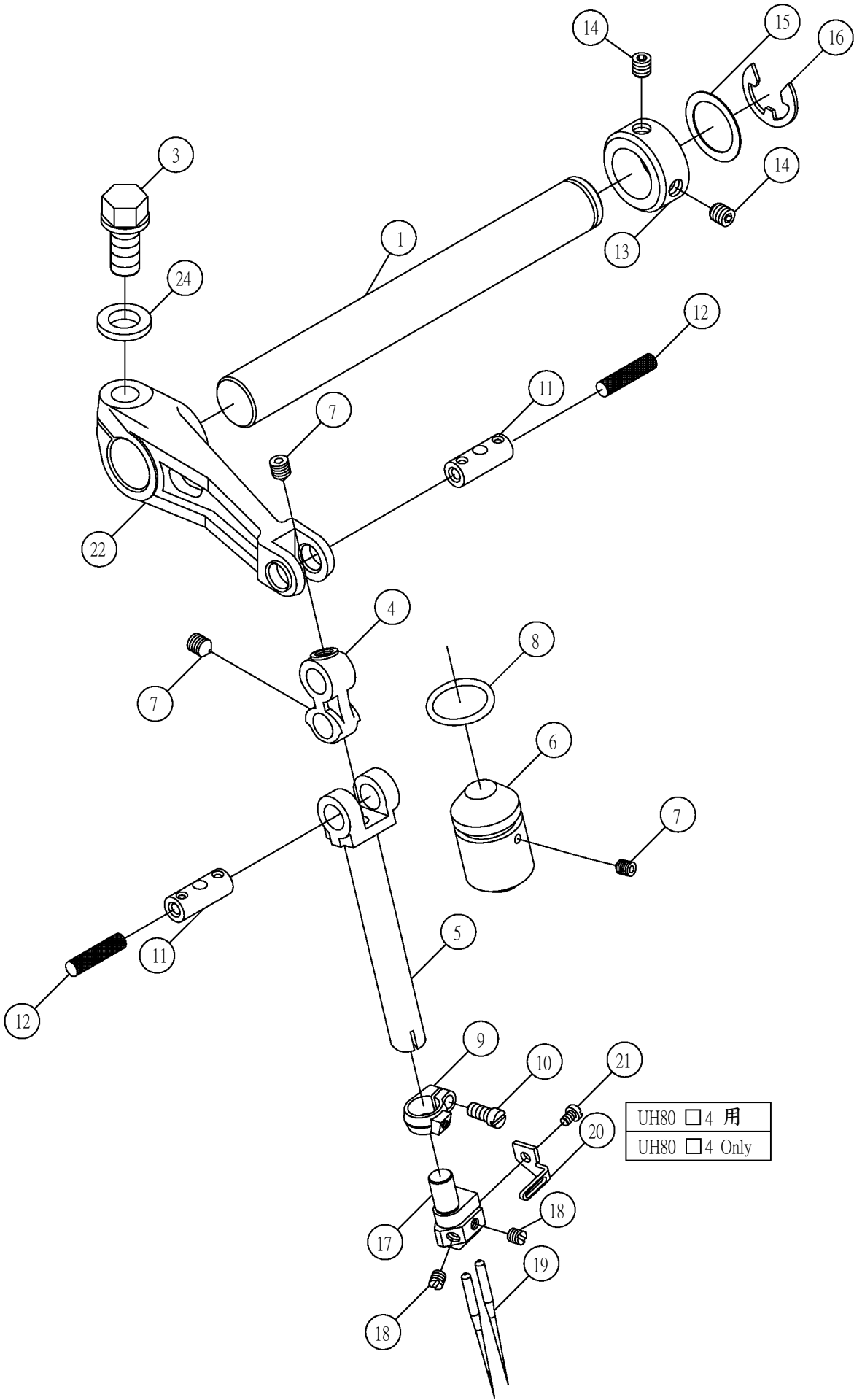
CHAIN LOOPER DRIVING MECHANISM (FOR UH80 □5 ONLY)



5.鏈結線鉤傳動機構 Chain Looper Driving Mechanism

序號	物料編號	名稱	單位用量
Ref. No.	Parts Number	Description	Amt.Req.
1	2120050501	軸 Shaft -----	1
2	2120050502	油封 Oil Seal -----	1
3	2120050503	鏈結線鉤座 Chain Looper Arm -----	1
4	2100000715	限位墊片 Spacer -----	1
5	8MK05321308C	螺絲 Screw -----	1
6	8MB04280713A	螺絲 Screw -----	1
7	-----	鏈結線鉤 Chainstitch Looper -----	See Page APP-1
8	8MB85240705A	螺絲 Screw -----	1
9	2120050509	曲柄 Crank -----	1
10	8MM06401210A	螺絲 Screw -----	3
11	2120050511	擺動接頭 Connector -----	1
12	2120000926	連桿 Link -----	1
13	2120050513	螺絲 Screw -----	1
14	2120050514	樞銷 Pin -----	1
15	2120050515	曲柄 Slider -----	1
16	2120050516	變距轉子 Pin -----	1
17	2120050517	油環 O Ring -----	1
18	2120050518	變距滑塊 Crank -----	1
19	2200001025	墊圈 Washer -----	1
20	90SW050	彈簧墊圈 Spring Washer -----	1
21	8MM05321209A	螺絲 Screw -----	1
22	2120050522	連桿 Connection Rod -----	1
23	90NB182208	滾針軸承 Needle Bearing -----	1
24	2120050524	球頭曲柄 Crank -----	1
25	8MN05320500E	螺絲 Screw -----	1
26	2120000526	隔環 Bushing -----	1
27	2120000527	墊圈 Washer -----	1
28	8MK05201307G	螺絲 Screw -----	1
29	212A0050509	曲柄組 Slider Asm -----	1

6. 針棒傳動機構 NEEDLE BAR COMPONENTS

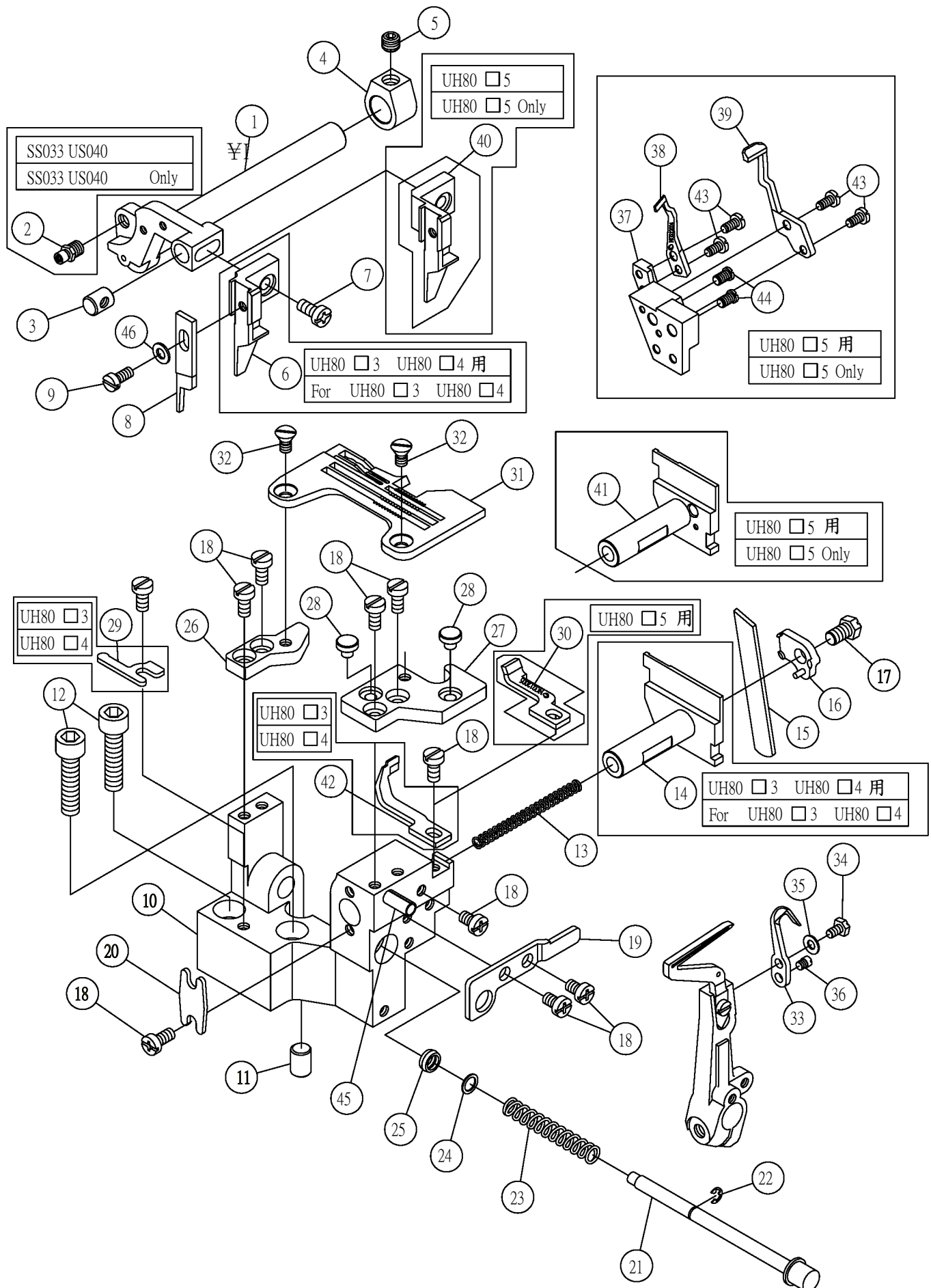


6.針棒傳動機構 Needle Bar Components

序號	物料編號	名 稱	單位用量
Ref. No.	Parts Number	Description	Amt.Req.
1	2120000601	軸 Shaft -----	1
2	2120000602	-----	停用
3	8MK06301408J	螺絲 Screw -----	1
4	2120000604	連桿 Connection -----	1
5	2120000605	針棒 Needle Bar -----	1
6	2120000606	軸襯 Bushing -----	1
7	8MN04280500C	螺絲 Screw -----	3
8	2120000608	油環 O-Ring -----	1
9	2120000609	束圈 Clamp -----	1
10	8MB03200604A	螺絲 Screw -----	1
11	2120000611	連結銷 Pin -----	2
12	66800	油線 Oil Wick -----	2
13	2120000613	定位環 Collar -----	1
14	8MN04280400A	螺絲 Screw -----	2
15	2120000615	墊圈 Washer -----	1
16	90ER080	扣環 E-Ring -----	1
17	-----	針留 Needle Holder -----	See Page APP-1
18	8SH32440300A	螺絲 Screw -----	2
19	-----	針 Needle -----	See Page APP-1
20	2120040620	導線 Thread Guide -----	1
21	8MB02160304A	螺絲 Screw -----	1
22	2120000622	驅動臂 Lever -----	1
23	2120000623	-----	停用
24	2120000440	墊圈 Spring Washer -----	1

7. 上,下刀修邊及導針機構

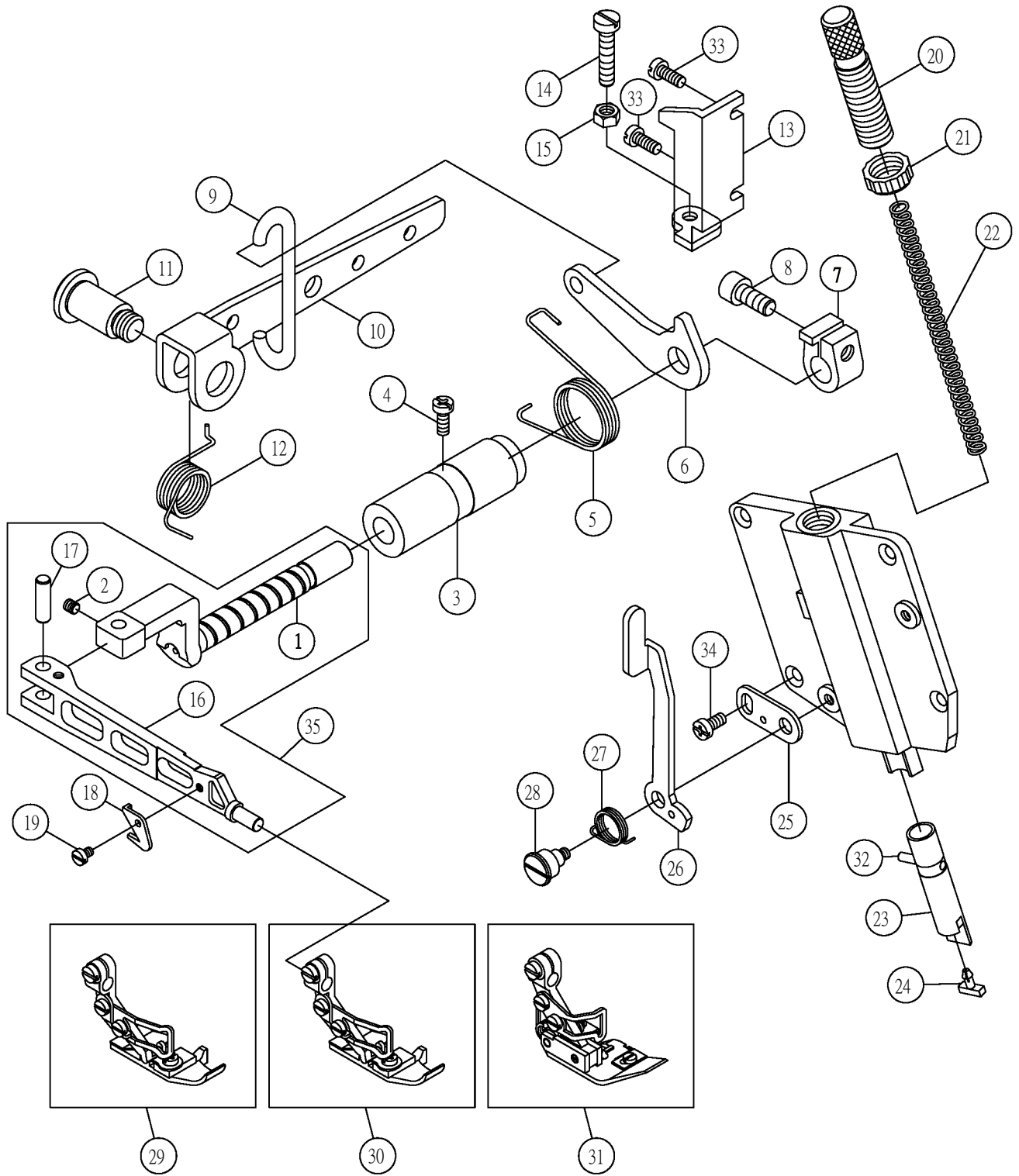
UPPER AND LOWER KNIFE COMPONENTS



7.上,下刀修邊機構 Upper And Lower Knife Components

序號	物料編號	名 稱	單位用量
Ref. No.	Parts Number	Description	Amt.Req.
1	2120000701	上刀軸 Upper Knife Shaft -----	1
2	2120000702	-----	停用
3	2120000703	固定銷 Pin -----	1
4	2120000704	定位環 Collar -----	1
5	8MN06400500A	螺絲 Screw -----	1
6	2120030706	上刀座 Upper Knife Clamp -----	1
7	8MC04280807D	螺絲 Screw -----	1
8	2120000708	上刀 Upper Knife -----	1
9	8MB85240806A	螺絲 Screw -----	1
10	2120000710	下刀座 Bracket -----	1
11	2120000711	定位銷 Pin -----	1
12	8MM06402510A	螺絲 Screw -----	2
13	2120000713	迫緊彈簧 Spring -----	1
14	2120030714	下刀架 Lower Knife Holder -----	1
15	2120000715	下刀 Lower Knife/Thick -----	1
16	2120000716	壓板 Lower Knife Clamp -----	1
17	8MK05320808A	螺絲 Screw -----	1
18	8MC04280807D	螺絲 Screw -----	9
19	2120000719	導軌 Guide -----	1
20	2120000720	封蓋 Plate -----	1
21	2120000721	止動按鈕 Push Button -----	1
22	90ER030	扣環 E-Ring -----	1
23	2120000723	彈簧 Spring -----	1
24	2120000724	墊圈 Washer -----	1
25	2120000725	油封Gasket -----	1
26	2120000726	後針板座Rear Support -----	1
27	2120000727	前針板座front Support -----	1
28	2120000137	孔塞Cushion Rubber -----	2
29	2120000729	定位片Stopper -----	1
30	-----	前導針器Needle Guard (Front) -----	See Page APP-1
31	-----	針板 Needle Plate -----	See Page APP-1
32	8MF04280807C	螺絲 Screw -----	2
33	-----	活動導針器 Traveling Needle Guide -----	See Page APP-1
34	8MK03200506A	螺絲 Screw -----	1
35	2120000735	皿形墊圈 Spring Washer -----	1
36	8MB03200304A	螺絲 Screw -----	1
37	2120050737	導針器座 Bracket -----	1
38	-----	導針器 Needle Guard -----	See Page APP-1
39	-----	導針器 Needle Guard -----	See Page APP-1
40	2120050740	上刀座 Upper knife Clamp -----	1
41	2120050741	下刀架 Lower Knife Holder -----	1
42	-----	前導針器 Needle Guard(Front) -----	See Page APP-1
43	8MB03200606A	螺絲 Screw -----	4
44	8MB04281006A	螺絲 Screw -----	2
45	90SP0514	彈簧銷 Pin -----	1
46	2100000223	墊圈 Washer -----	1

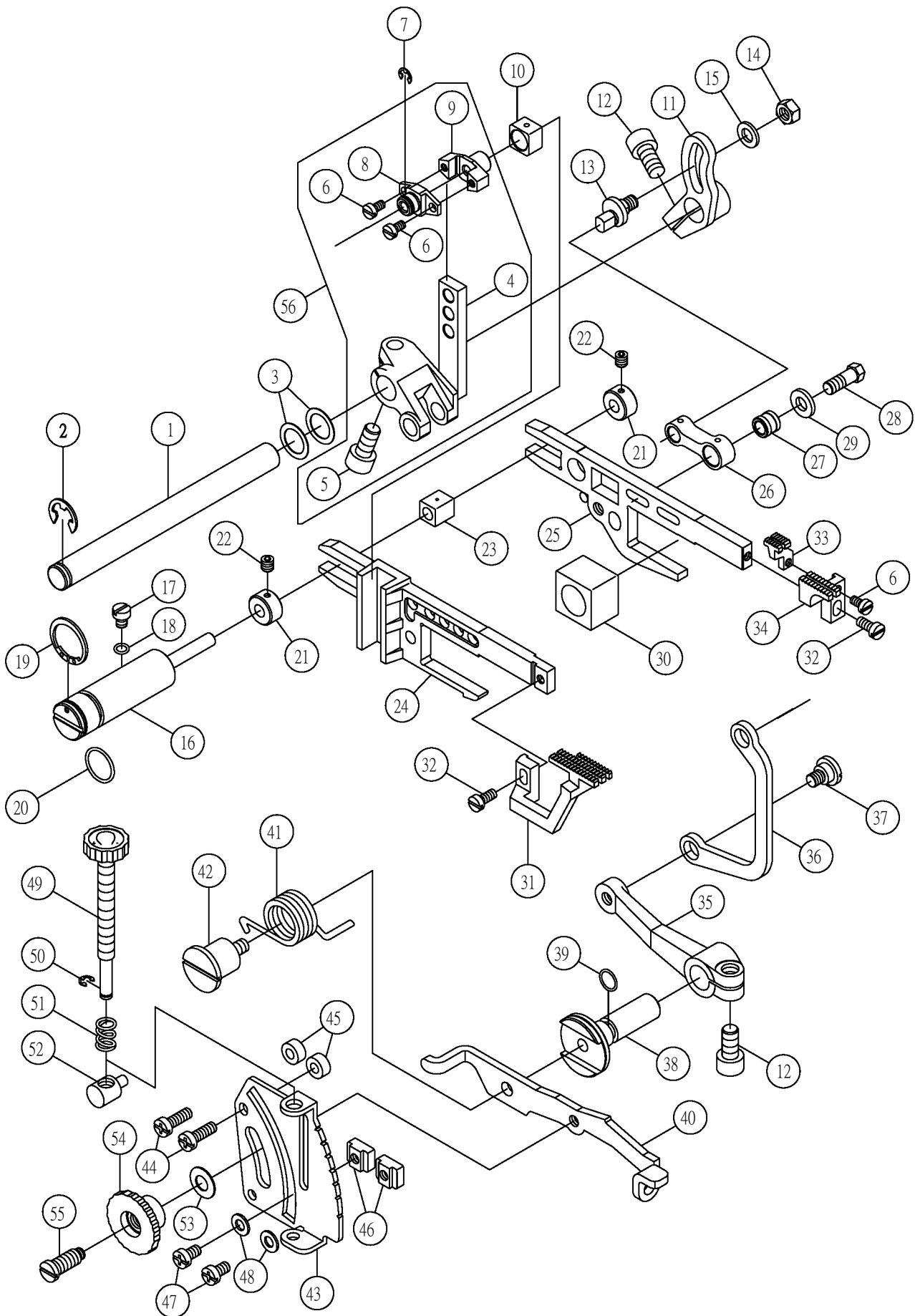
8. 壓腳提昇機構 Press Foot Components



8.壓腳提昇機構 Press Foot Components

序號	物料編號	名稱	單位用量
Ref. No.	Parts Number	Description	Amt.Req.
1	2120000801	軸 Shaft -----	1
2	8MN04280400A	螺絲 Screw -----	1
3	2120000803	軸襯 Bushing -----	1
4	8MC04281607D	螺絲 Screw -----	1
5	2120000805	彈簧 Spring -----	1
6	2120000806	拉桿 Level -----	1
7	2120000807	定位環 Collar -----	1
8	8MM06401410A	螺絲 Screw -----	1
9	2120000809	掛鉤 Lifting Hook -----	1
10	2120000810	拉桿 Level -----	1
11	2120000811	螺樁 Stud -----	1
12	2120000812	回復彈簧 Spring -----	1
13	2120000813	限位片 Stopper -----	1
14	8MB05322409A	螺絲 Screw -----	1
15	8MA05320408A	螺帽 Nut -----	1
16	2120000816	壓腳臂 Presser Arm -----	1
17	2100001004	連結銷 Pin -----	1
18	2120000818	割線刀 Chain Cutter -----	1
19	8MB03200406A	螺絲 Screw -----	1
20	2120000820	調節螺樁 Adjusting Screw -----	1
21	2120000821	螺帽 Nut -----	1
22	2120000822	彈簧 Spring -----	1
23	2120000823	壓桿 Presser Bar -----	1
24	2120000824	壓子 Plunger -----	1
25	2120000825	止動片 Stopper -----	1
26	2120000826	搬手 Lever -----	1
27	2120000827	彈簧 Spring -----	1
28	8MB04281412R	螺樁 Stud -----	1
29	-----	壓腳組 Presser Foot -----	See Page APP-1
30	-----	壓腳組 Presser Foot -----	See Page APP-1
31	-----	壓腳組 Presser Foot -----	See Page APP-1
32	90SP0316	彈簧銷 Spring Pin -----	1
33	8MC04280807D	螺絲 Screw -----	2
34	8MC04280607D	螺絲 Screw -----	1
35	212A0000816	壓腳臂組 Presser Arm Asm -----	1

9. 進給驅動機構 FEED MECHANISM COMPONENTS

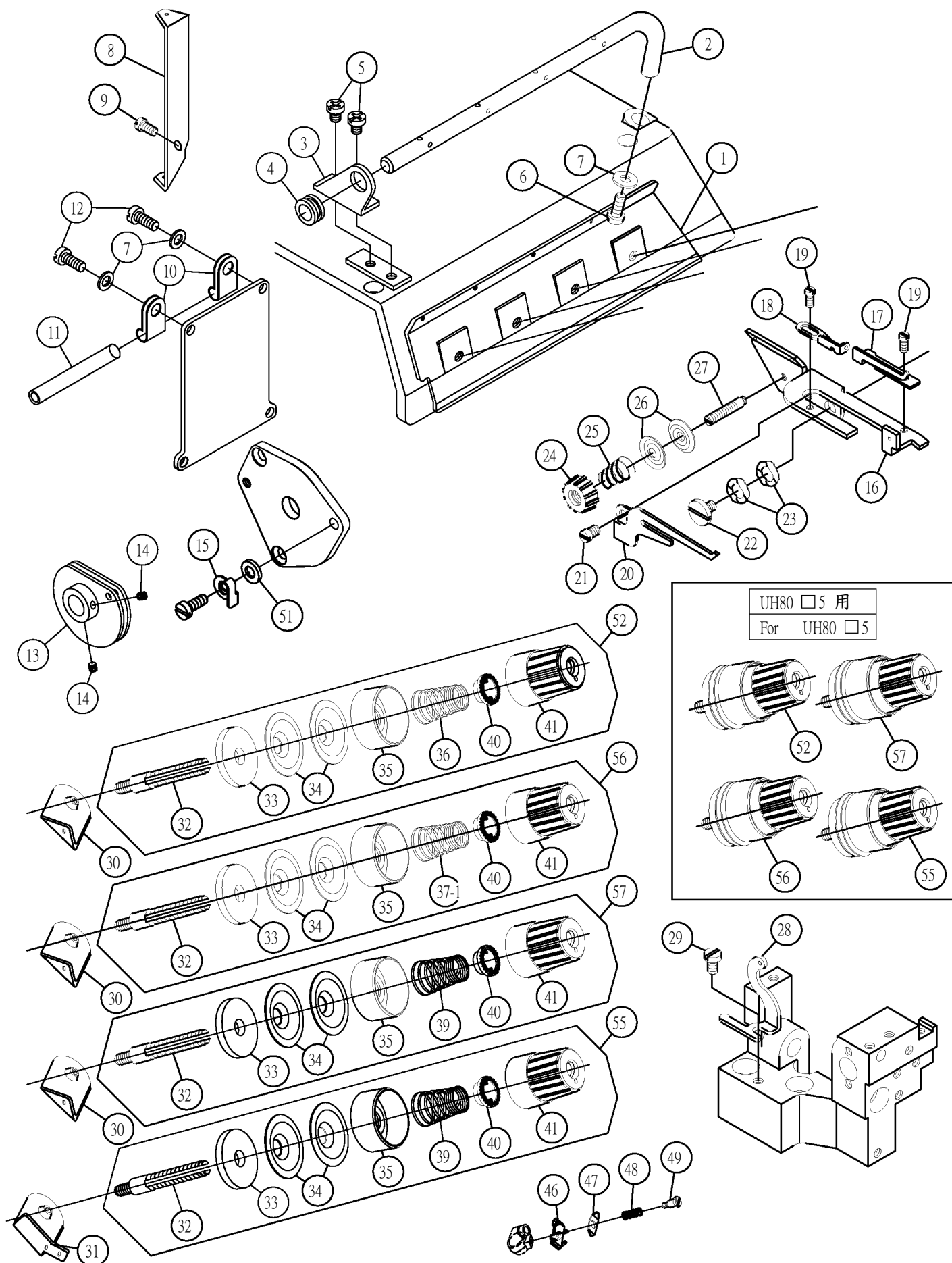


9. 進給驅動機構 Feed Mechanism Components

序號	物料編號	名稱	單位用量
Ref. No.	Parts Number	Description	Amt. Req.
1	2120000901	軸 Shaft	1
2	90ER070	扣環 E-Ring	1
3	2120000424	墊圈 Washer	2
4	2120000904	變距滑軌 Differential Feed Roker	1
5	8MM06401410A	螺絲 Screw	1
6	8MB03200606A	螺絲 Screw	3
7	90ER060	扣環 E-Ring	1
8	2120000908	滑塊檔板 Slider Cap	1
9	2120000909	滑塊 Slider	1
10	2120000910	滑塊 Slider Block	1
11	2120000911	曲柄 Crank	1
12	8MM06401210A	螺絲 Screw	2
13	2120000913	變距連結銷 Pin	1
14	8MA05320408A	螺帽 Nut	1
15	2200001025	墊圈 Washer	1
16	2120000916	懸臂軸 Shaft	1
17	8MB04280507A	螺絲 Screw	1
18	2120000918	油環 Gasket	1
19	2120000919	扣環 Ring	1
20	2120000608	油環 O-Ring	1
21	2120000921	定位環 Collar	2
22	8MN04280400A	螺絲 Screw	2
23	2120000923	滑塊 Block	1
24	2120000924	差動送布齒台架 Differential Feed Bar	1
25	2120000925	主動送布齒台架 Main Feed Bar	1
26	2120000926	連桿 Link	1
27	2120000526	隔環 Bushing	1
28	8MK05201307G	螺絲 Screw	1
29	2120000527	墊圈 Washer	1
30	2120000930	滑塊 Block	1
31	-----	差動送布齒 Differential Feed Dog	See Page APP-1
32	8MB85240806A	螺絲 Screw	2
33	-----	輔助送布齒 Auxiliary Feed Dog	See Page APP-1
34	-----	主送布齒 Main Feed Dog	See Page APP-1
35	2120000935	拉桿 Lever	1
36	2120000936	吊桿 Link	1
37	8MB05320911G	螺樁 Stud	1
38	2120000938	樞軸 Shaft	1
39	90OR070	油環 O-Ring	1
40	2120000940	搬手 Lever	1
41	2120000941	彈簧 Spring	1
42	2120000942	螺樁 Stud	1
43	2120000943	指示板 Regulator Plate	1
44	8MC04281207D	螺絲 Screw	2
45	2120000945	隔環 Spacer	2
46	2120000946	限位環 Spacer	2
47	8MC04280607D	螺絲 Screw	2
48	2100000223	墊圈 Washer	2
49	2120000949	調節螺樁 Adjustinf Screw	1
50	90ER030	扣環 E-Ring	1
51	2120000951	彈簧 Spring	1
52	2120000952	微調定位銷 Pin	1
53	2120000953	墊圈 Spring Washer	1
54	2120000954	螺帽 Nut	1
55	8MB06301608Q	螺絲 Screw	1
56	212A0000904	變距滑軌組 Differential Feed Roker	1

10. 縫線張力調節機構 (UH80 □ 5 用)

THREAD TENSION COMPONENTS (UH80 □ 5 ONLY)

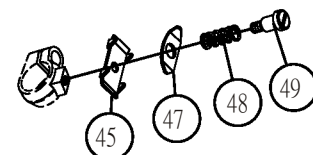
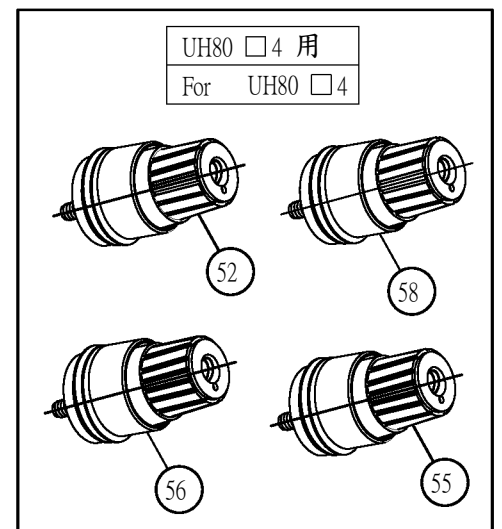
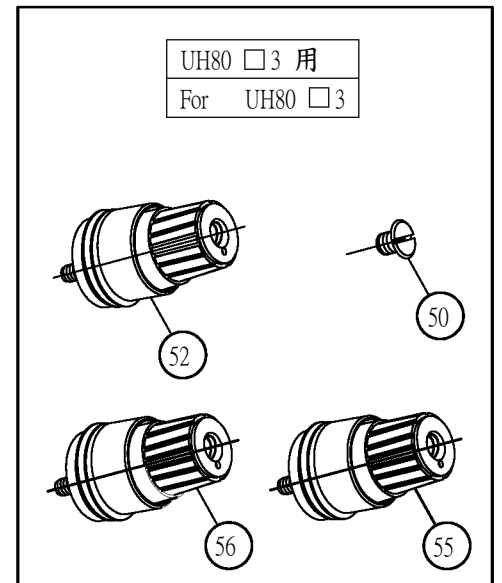
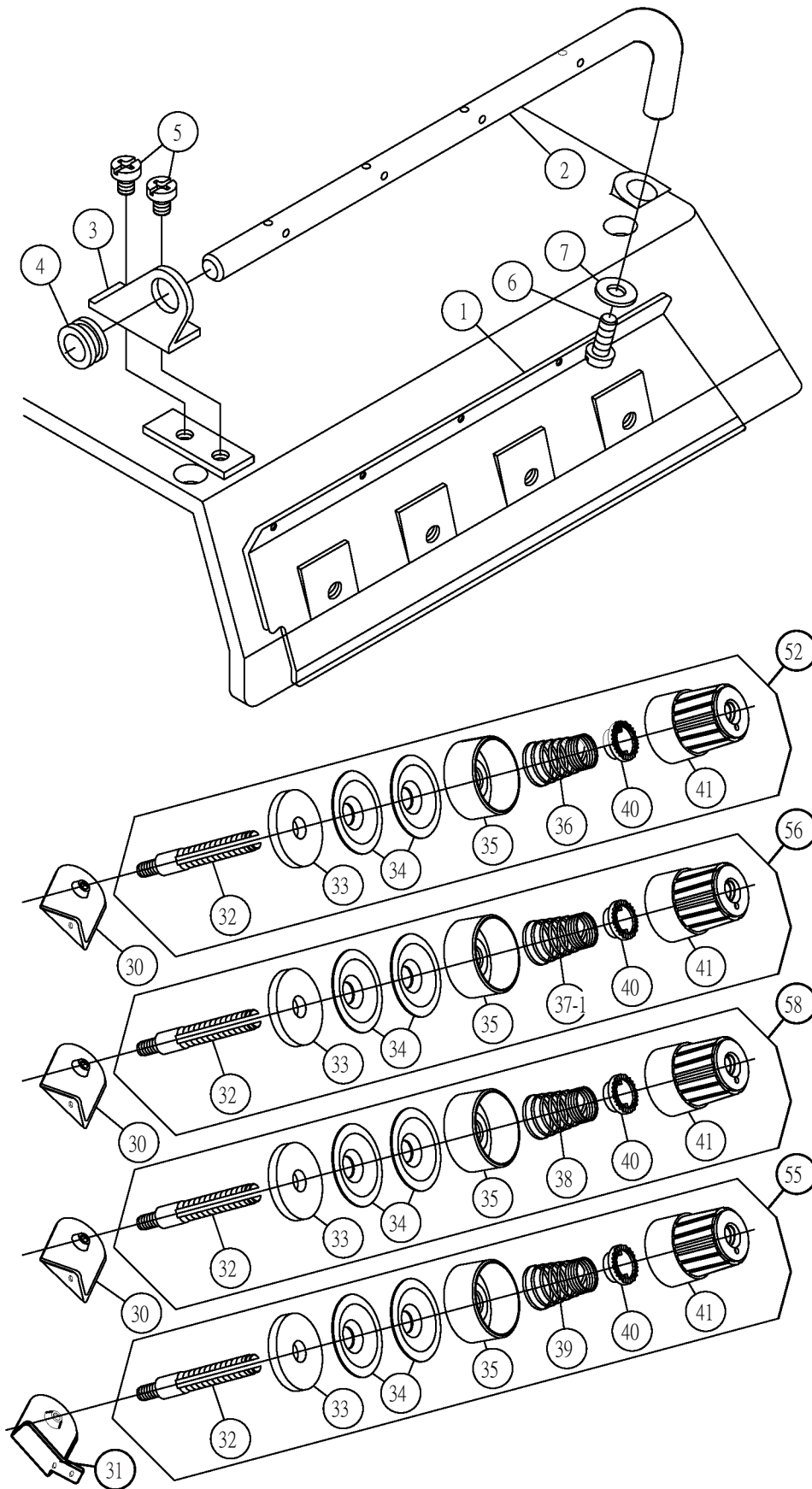


10. 縫線張力調節機構(UH80□ 5用) Thread Tension Components(For UH80□ 5)

序號	物料編號	名 稱	單位用量
Ref. No.	Parts Number	Description	Amt.Req.
1	2120001001	導線板 Thread Guide Plate -----	1
2	2120001002	導線桿 Center Thread Guide -----	1
3	2120001003	固定架 Bracket -----	1
4	2120001004	減震橡膠 Rubber -----	1
5	8MC04280507D	螺絲 Screw -----	2
6	8MC04281207D	螺絲 Screw -----	1
7	2100000223	墊圈 Washer -----	3
8	2120051008	導線 Thread Guide -----	1
9	8MC04280507D	螺絲 Bracket -----	1
10	2120051010	管夾 Holder -----	2
11	2100051112	導線管 Thread Guide Tube -----	1
12	8MC04281207D	螺絲 Screw -----	2
13	2120051013	揚線凸輪 Thread Takeup -----	1
14	8MN03200300A	螺絲 Screw -----	2
15	2120051015	夾簧 Latch -----	1
16	2120051016	支架 Bracket -----	1
17	2120051017	導線 Thread Guide -----	1
18	2120051018	導線 Thread Guide -----	1
19	8MB03200406A	螺絲 Screw -----	2
20	2120051020	導線 Hook -----	1
21	8MC04280507D	螺絲 Screw -----	1
22	8MB04280711E	螺絲 Screw -----	1
23	2120000150	墊圈 Washer -----	2
24	2120051024	螺帽 Nut -----	1
25	2120051025	彈簧 Spring -----	1
26	2120051026	張力控制盤 Tension Disc -----	2
27	2120051027	螺樁 Stud -----	1
28	2120051028	導線 Thread Guide -----	1
29	8MC04281007D	螺絲 Screw -----	1
30	2120001030	導線 Thread Guide -----	3
31	2120001031	導線 Thread Guide -----	1
32	2100001120	螺樁 Stud -----	4
33	2100001127	羊毛氈 Felt -----	4
34	2100001126	張力控制盤 Tension Disc -----	8
35	2100001125	彈簧座 Tension Spring Retainer -----	4
36	2100001132	錐型彈簧(藍) Spring(Blue) -----	1
37	2100041131	-----	停用
37-1	2120001037	錐型彈簧(白) Spring(White) -----	1
38	2100001124	-----	停用
39	2100001123	錐型彈簧(紅) Spring(Red) -----	2
40	2100001122	止滑齒環 Bush -----	4
41	2100001121	調節螺帽(藍) Tension Nut(Blue) -----	1
42	2100001121	調節螺帽(黃) Tension Nut(Yellow) -----	1
43	2100001121	調節螺帽(綠) Tension Nut(Green) -----	1
44	2100001121	調節螺帽(紅) Tension Nut(Red) -----	1
45	2120000945	-----	停用
46	2120051046	穩線壓板座 Thread Guide Plate -----	1
47	2120001047	穩線壓板 Tension Control Plate -----	1
48	2120001048	彈簧 Spring -----	1
49	2120001049	螺樁 Stud -----	1
51	2120001051	墊圈 Washer -----	1

10-1. 縫線張力調節機構 THREAD TENSION COMPONENTS

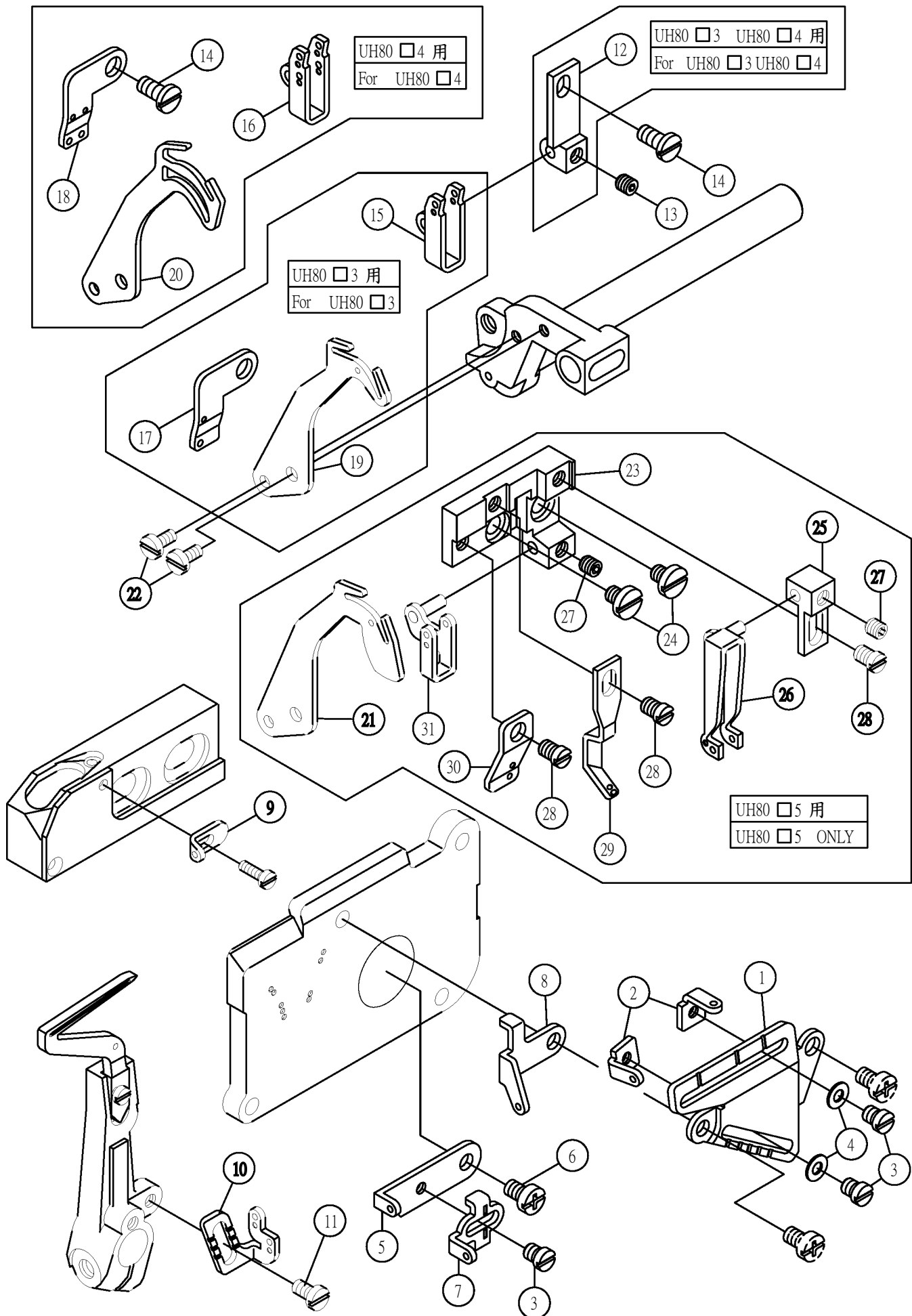
UH80 □ 3 UH80 □ 4 用 FOR UH80 □ 3 UH80 □ 4



10-1. 縫線張力調節機構(UH80□ 3,UH80□ 4用) Thread Tension Components(For UH80□ 3,UH80□ 4)

序號	物料編號	名 稱	單位用量
Ref. No.	Parts Number	Description	Amt.Req.
1	2120001001	導線板 Thread Guide Plate -----	1(3、4)
2	2120001002	導線桿 Center Thread Guide -----	1(3、4)
3	2120001003	固定架 Bracket -----	1(3、4)
4	2120001004	減震橡膠 Rubber -----	1(3、4)
5	8MC04280507D	螺絲 Screw -----	2(3、4)
6	8MC04281207D	螺絲 Screw -----	1(3、4)
7	2100000223	墊圈 Washer -----	1(3、4)
---	-----	-----	---
30	2120001030	導線 Thread Guide -----	2(3) 3(4)
31	2120001031	導線 Thread Guide -----	1(3、4)
32	2100001120	螺樁 Stud -----	3(3) 4(4)
33	2100001127	羊毛氈 Felt -----	3(3) 4(4)
34	2100001126	張力控制盤 Tension Disc -----	6(3) 8(4)
35	2100001125	彈簧座 Tension Spring Retainer -----	3(3) 4(4)
36	2100001132	錐型彈簧(藍) Spring(Blue) -----	1(3、4)
37	2100041131	-----	停用
37-1	2120001137	錐型彈簧(白) Spring(White) -----	1(3、4)
38	2100001124	錐型彈簧(綠) Spring(Green) -----	1(4)
39	2100001123	錐型彈簧(紅) Spring(Red) -----	1(3) 1(4)
40	2100001122	止滑齒環 Bush -----	4(3、4)
41	2100001121	調節螺帽(藍) Tension Nut(Blue) -----	1(3、4)
42	2100001121	調節螺帽(黃) Tension Nut(Yellow) -----	1(3、4)
43	2100001121	調節螺帽(綠) Tension Nut(Green) -----	1(3、4)
44	2100001121	調節螺帽(紅) Tension Nut(Red) -----	1(4)
45	2120031045	穩線壓板座 Thread Guide Plate -----	1(3、4)
---	-----	-----	---
47	2120001047	穩線壓板 Tension Control Plate -----	1(3、4)
48	2120001048	彈簧 Spring -----	1(3、4)
49	2120001049	螺樁 Stud -----	1(3、4)
50	8SB44400608K	螺絲 Screw -----	1(3)
52	212A0001052	張力控制組(藍) Tension controlle asm -----	1(3、4、5)
53	212A0001053	-----	停用
54	212A0041054	-----	停用
55	212A0001055	張力控制組(紅) Tension controlle asm -----	1(3、4、5)
56	212A0001056	張力控制組(黃) Tension controlle asm -----	1(3、4、5)
57	212A0041057	張力控制組(綠) Tension controlle asm -----	1(5)
57	210A0001124	張力控制組(綠) Tension controlle asm -----	1(4)

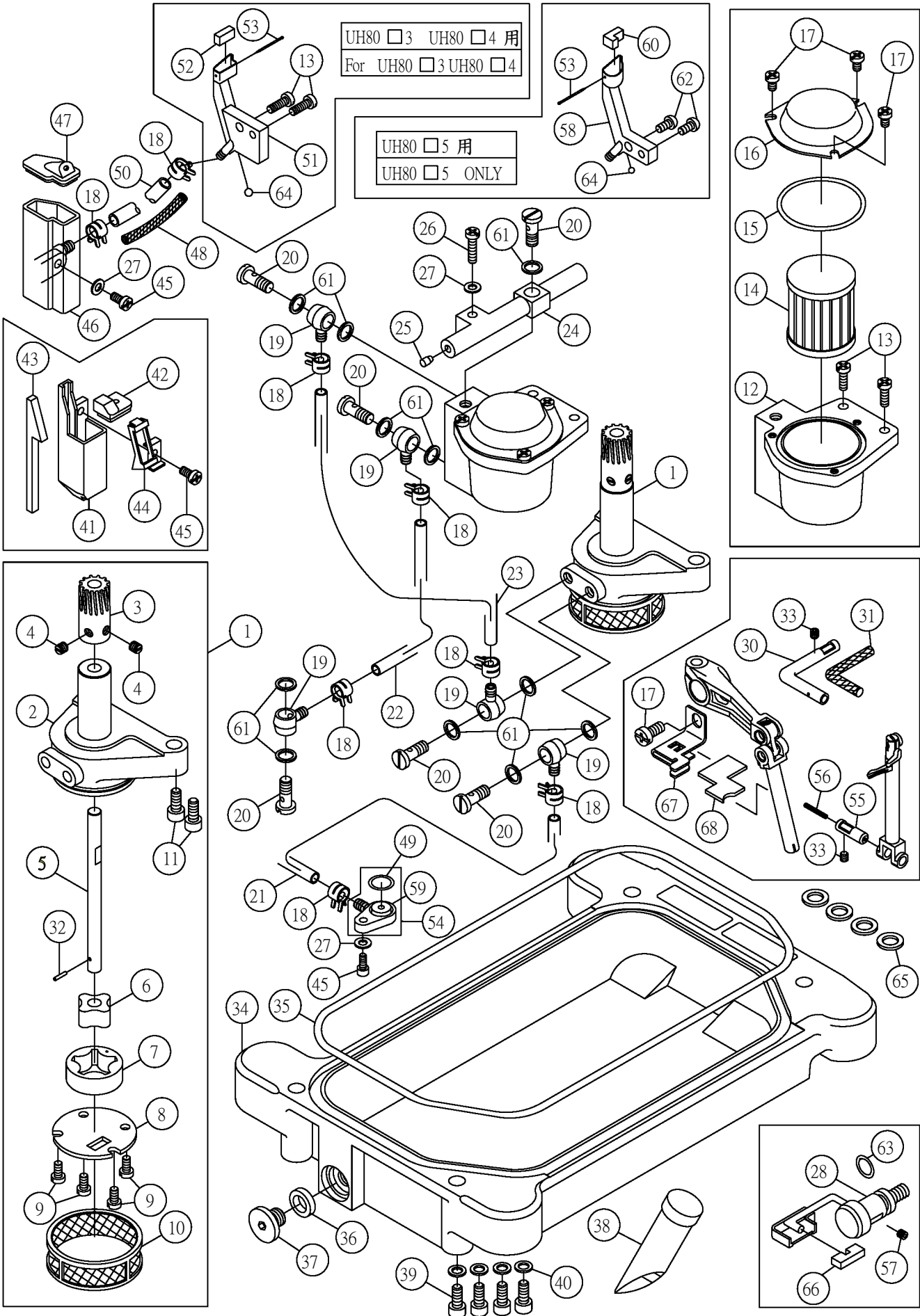
11. 導線揚線機構 THREAD GUIDE AND THREAD TAKEUP



11.導線揚線機構 Thread Guide And Thread Takeup

序號	物料編號	名稱	單位用量
Ref. No.	Parts Number	Description	Amt.Req.
1	2120001101	導線座 Bracket -----	1
2	2120001102	導線 Thread Guide (Right) -----	2
3	8MB03200406A	螺絲 Screw -----	3
4	90PW040	墊圈 Washer -----	2
5	2120001105	導線 Thread Takeup -----	1
6	8MC04280807D	螺絲 Screw -----	1
7	2120001107	導線 Thread Guide -----	1
8	2120001108	導線 Thread Guide -----	1
9	2120001109	導線 Thread Guide -----	1
10	2120001110	導線 Thread Takeup -----	1
11	8MB85240607K	螺絲 Screw -----	1
12	2120031112	導線座Bracket -----	1
13	8MN04280400A	螺絲 Screw -----	1
14	8MC04280607D	螺絲 Screw -----	2
15	2120031115	導線 Thread Guide -----	1
16	2120041116	導線 Thread Guide -----	1
17	2120031117	導線 Thread Guide -----	1
18	2120041118	導線 Thread Guide -----	1
19	2120031119	揚線環 Thread Takeup -----	1
20	2120041120	揚線環 Thread Takeup -----	1
21	2120051121	揚線環 Thread Takeup -----	1
22	8MB03200606A	螺絲 Screw -----	2
23	2120051123	導線座 Bracket -----	1
24	8MB04280807A	螺絲 Screw -----	2
25	2120051125	支架 Bracket -----	1
26	2120051126	導線 Thread Guide -----	1
27	8MN04280400A	螺絲 Screw -----	2
28	8MB04280507A	螺絲 Screw -----	3
29	2120051129	導線 Thread Guide -----	1
30	2120051130	導線 Thread Guide -----	1
31	2120051131	導線 Thread Guide -----	1

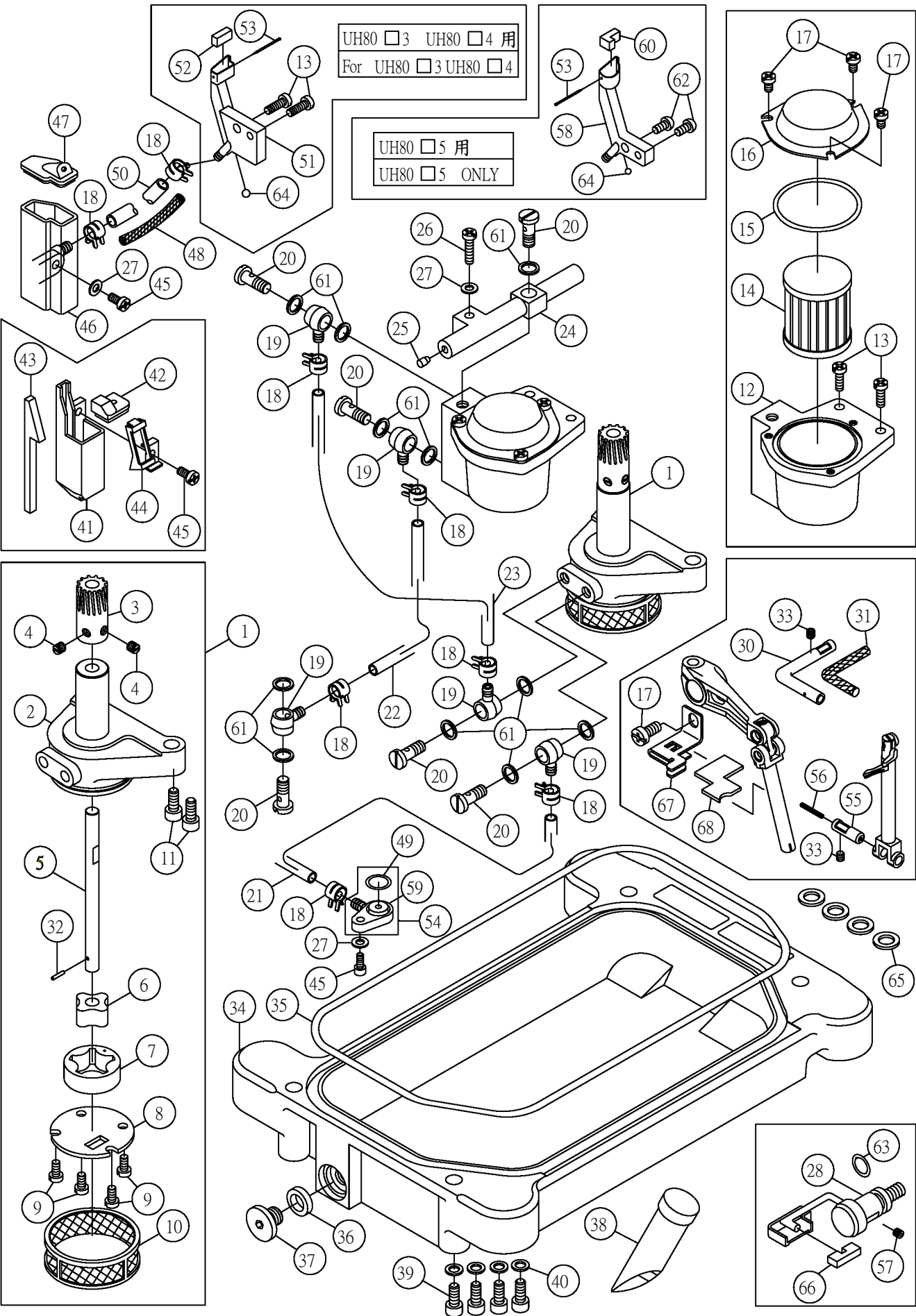
12. 潤滑冷卻機構



12.潤滑冷卻機構 Lubrication And Cooling Mechanism

序號	物料編號	名 稱	單位用量
Ref. No.	Parts Number	Description	Amt.Req.
1	212A0001202	泵浦組 Pump ASM. -----	1
2	2120001202	泵浦本體 Pump Seat -----	1
3	2120001203	蝸母 Worm Gear -----	1
4	8MH05320400A	螺絲 Screw -----	2
5	2120001205	軸 Shaft -----	1
6	2120001206	內轉子 inside Rotor -----	1
7	2120001207	外轉子 Outside Rotor -----	1
8	2120001208	封蓋 Cover -----	1
9	8MC04280807D	螺絲 Screw -----	4
10	2120001210	濾網 Filter -----	1
11	8MB04281607A	螺絲 Screw -----	2
12	2120001212	濾心座 Filter Seat -----	1
13	8MC04281207D	螺絲 Screw -----	4
14	2100001521	濾心 Oil Filter -----	1
15	2120001215	油環 O-Ring -----	1
16	2120001216	封蓋 Cover -----	1
17	8MC04280607D	螺絲 Screw -----	4
18	2100001536	管夾 Tube -----	8
19	2100001535	接頭 Joint -----	5
20	2120001220	迴路螺樁 Stud -----	6
21	66792	油管 Oil Tube -----	1
22	66792	油管 Oil Tube -----	1
23	66792	油管 Oil Tube -----	1
24	2120001224	分油管 Oil Distributor -----	1
25	2120001225	-----	停用
26	8MC04281607D	螺絲 Screw -----	1
27	2100000223	墊圈 Washer -----	3
28	2120001228	聚油環 Felt Housing -----	1
29	2120001229	-----	停用
30	2120001230	潤滑油管 Tube -----	1
31	66800	油線 Oil Wick -----	1
32	90SP0210	彈簧銷 Pin -----	1
33	8MN04280400A	螺絲 Screw -----	2
34	2120001234	油盤 Oil Reservoir -----	1
35	2120001235	油封 Gasket -----	1
36	2100000244	油封 Gasket -----	1
37	8SM95281017A	螺絲 Screw -----	1
38	2110001507	油面鏡 Oil Sight Window -----	1
39	8MM05321209A	螺絲 Screw -----	4
40	2120001240	墊圈 Washer -----	4
41	2120001241	油壺 Silicone Oil Reservoir (Upper) -----	1
42	2120001242	油壺蓋 Cover -----	1
43	2120001243	羊毛氈 Sponge -----	1
44	2120001244	護蓋 Cover -----	1
45	8MC04281007D	螺絲 Screw -----	3
46	2120001246	油壺 Silicone Oil Reservoir (Lower) -----	1
47	2120001247	油壺蓋 Cover -----	1
48	66800	油線 Oil Wick -----	1
49	2120001249	油環 O-Ring -----	1
50	66792	油管 Oil Tube -----	2
51	2120031251	針冷卻器 Needle Thread Lubricator -----	1
52	2120031252	羊毛氈 Sponge -----	1
53	2120001253	大頭針 Pin -----	1
54	212A0001254	接頭組 Joint Asm -----	1
55	2120001255	黃銅管 Tube -----	1
56	66800	油線 Oil Wick -----	1
57	8MN04280400A	螺絲 Screw -----	1
58	2120051258	針冷卻器 Needle Thread Lubricator (For 5 Lines) -----	1
59	2120001259	接頭 Joint -----	1
60	2120051260	羊毛氈 Sponge -----	1

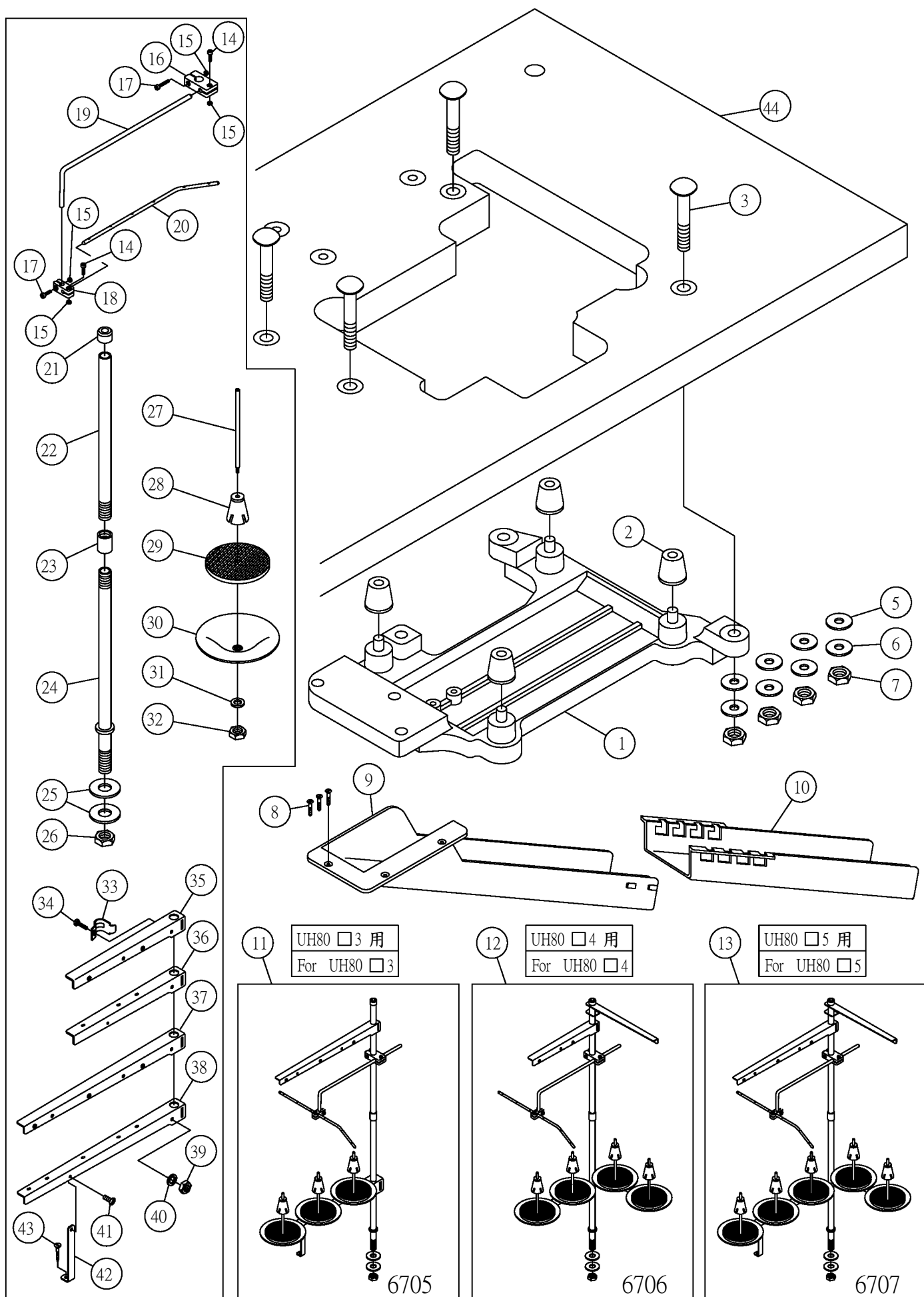
12. 潤滑冷卻機構 LUBRICATION AND COOLING MECHANISM



12.潤滑冷卻機構 Lubrication And Cooling Mechanism

序號	物料編號	名 稱	單位用量
Ref. No.	Parts Number	Description	Amt.Req.
61	2100001534	墊圈 Washer -----	11
62	8MC04280807D	螺絲 Screw -----	2
63	90OR070	油環 O-Ring -----	1
64	2100001404	孔塞 Plug -----	1
65	2120001265	墊圈 Washer -----	4
66	2120001266	羊毛氈 Sponge -----	1
67	2120001267	針棒簧片 Needle Bar Spring -----	1
68	2120001268	羊毛氈 Needle Bar Sponge -----	1

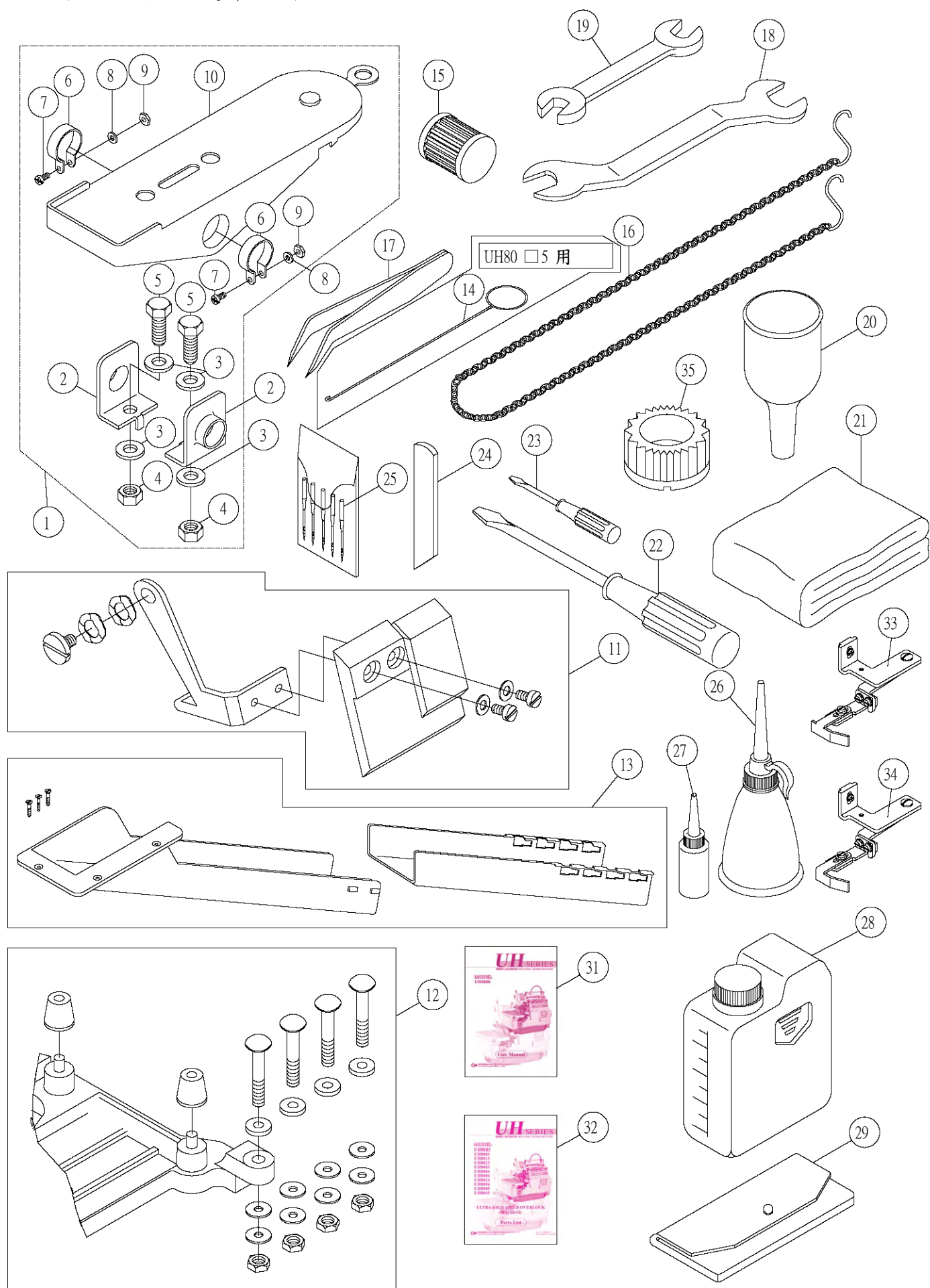
13. 半沈式車板裝置 PARTS FOR SEMI-SUBMERGED INSTALLATION



13.半沉式車板裝置 Parts For Semi-Submerged Installation

序號	物料編號	名 稱	單位用量
Ref. No.	Parts Number	Description	Amt. Req.
1	66911	托底板 Frame Support Plate -----	1
2	66941	防震墊 Rubber -----	4
3	66956	懸吊螺樁 Screw -----	4
4	669111	-----	停用
5	90PW100	墊圈 Washer -----	4
6	90PW1001	墊圈 Washer -----	4
7	8SA10160714A	螺帽 Nut -----	12
8	8WF03131706A	木螺絲 Wool Screw -----	3
9	66820-1	上導布屑 Waste Chute -----	1
10	66820-2	下導布屑 Waste Chute -----	1
11	66705	線架組 Thread Stand Asm -----	1
12	66706	線架組 Thread Stand Asm -----	1
13	66707	線架組 Thread Stand Asm -----	1
14	667058	螺絲 Screw -----	2
15	667059	螺帽 Nut -----	4
16	667057	接頭 Bracket -----	1
17	6670510	螺絲 Screw -----	2
18	6670512	接頭 Bracket -----	1
19	6670511	旋臂 Arm -----	1
20	6670513	導線桿 Thread Guide -----	1
21	667051	柱帽 Rod Cup -----	1
22	667052	上柱 Upper Thread Stand Rod -----	1
23	667053	接頭 Joint -----	1
24	667054	下柱 Lower Thread Stand Rod -----	1
25	667055	墊圈 Washer -----	2
26	667056	螺帽 Nut -----	1
27	6670515	線盤軸 Spool pin -----	1
28	6670516	定心椎 Spool Retaining Fig -----	1
29	6670517	緩衝墊 Seat -----	1
30	6670518	線盤 Spool Tray -----	1
31	6670519	彈簧墊圈 Spring Washer-----	1
32	6670520	螺帽 Nut -----	1
33	6670523	夾板 Clamp -----	2
34	6670524	螺絲 Screw -----	1
35	6670531	導線 Thread Guide -----	2(4) 1(5)
36	667061	線盤座 Spool Set Bracket -----	2(4) 1(5)
37	6670521	導線臂 Thread Guide -----	1(3、5)
38	6670522	線盤座 Thread Guide -----	1(3、5)
39	6670526	螺帽 Nut -----	1
40	6670525	彈簧墊圈 Spring Washer-----	1
41	6670528	螺絲 Screw -----	1(3、5)
42	6670527	撐桿 Support Rod-----	1(3、5)
43	6670530	木螺絲 Wood Screw-----	1(3、5)
44	66814-1	車板上載式 Table -----	1

14. 備品 工具及隨車附件 Accessories



14.備品 工具及隨車附件 Accessories

序號	物料編號	名稱	單位用量
Ref. No.	Parts Number	Description	Amt.Req.
1	66700	踏板組 Pedal Set -----	1
2	667002	樞軸 Bearing -----	2
3	667003	墊圈 Washer -----	4
4	667004	螺帽 Nut -----	2
5	667005	螺絲 Screw -----	2
6	667006	扣環 Snap Ring -----	2
7	667007	螺絲 Screw -----	2
8	667008	墊圈 Washer -----	2
9	667009	螺帽 Nut -----	2
10	667001	踏板 pedal -----	1
11	212A0000161	護目鏡 See Page II -----	1
12	-----	托底板 See Page Installation -----	1
13	66820	導布屑 See Page Installation -----	1
14	66840	穿線鋼絲 Threading Bar -----	1
15	2100001521	濾油器 Cartrige Filter -----	1
16	66695	傳動鍊 Chain -----	1
17	66690	夾子 Tweezers -----	1
18	66625	M14開口板手 Wrench -----	1
19	66626	M8開口板手 Wrench -----	1
20	66722	油漏斗 Oil Funnel -----	1
21	66845	防塵罩 Cover -----	1
22	66665	平口起子 Screwdriver -----	1
23	66667	平口起子 Screwdriver -----	1
24	2120000715	下刀 Lower Knife -----	1
25	66732	針 Needle -----	5
26	66721	油瓶 Container -----	1
27	66720	油壺 Oiler -----	1
28	66715	油罐 Oil Container -----	1
29	66831	工具袋 Accessories bag -----	1
30	66666	平口起子 Screwdriver -----	1
31	UH6205-1-02-07	使用說明書 Parts List -----	1
32	UH6305-3-03-10	零件冊 Instruction Manual -----	1
*33	/EG006	導邊器組 Edge Guide Set -----	1
**34	/EG007	導邊器組 Edge Guide Set -----	1
35	66685	油鏡裝配工具 Oil Sight Window Wrench -----	1