

# CW600

シリンダーベット偏平縫いマシン  
Cylinderbed Interlock Stitch Machines

**Parts Checker**



**PEGASUS®**

This diagram shows an exploded view of a mechanical assembly. The main component is a large, rectangular housing with a central rectangular opening. Various parts are shown being assembled onto or into this housing. The parts are labeled with the following numbers:

- 2106790
- 2402280
- 0045410
- 2401270
- 2401100
- 2400520
- 2402270
- 2090840
- 007018A0
- 3034480
- 2105880
- 2073580
- 2551080
- 2400010
- 2501480
- 2100031
- 2065900
- 2106790
- 2501570
- 2500200
- 007017A0
- 2501170
- 2050881
- 0045390
- 2400450
- 0045220
- 2402261

Exploded view diagram of a mechanical assembly. The diagram shows the following parts and their labels:

- 0070520
- 2501540
- 2501550
- 007019A0
- 2500210
- 2501530
- 250151DYD0
- 007021A0
- 2402630
- 0052420
- 0070860
- 2103070
- 2502550
- 3034480
- 007020A0
- 2028750
- 0070090
- 2502560
- 2502570
- 2402261
- 179107-050
- 007021A0
- 250150-YD0
- 2500190
- 附属品に梱入  
Packed in accessory
- 250156-TB0
- 0070750
- 2500230
- 3033350
- 0070520
- 250234-YD0
- 007019A0
- 0070790
- 2501590
- 0045430
- 2100250
- 2501810
- 007022A0

007020A0

250162-PD0

0070820

0070820

2501800

2501600

2501610

0070200

2100250

2501680

2501760

007017A0

007024A0

2501750

2402280

250280-PD0

2501810

007018A0

0045370

250200-9P0

0070820

2501830

Exploded view diagram of a mechanical assembly, showing various components and their assembly sequence. The diagram includes the following labeled parts:

- 0070360
- 250555-910
- 0071280
- 250554-920
- 0053760
- 210091-920
- 0053760
- 252056-920
- 0045340
- 0045550
- 0045470
- 250530-910
- 250557-910
- 0045470
- 206050C0
- 0045470
- 250545-910
- 250529A910
- 0045560
- 0045000
- 2401260
- 0045410
- 2505610
- 2505560
- 0070820
- 2505140

This diagram illustrates the assembly of a mechanical component, likely a pump or motor, showing the relationship between various parts. The components are labeled with part numbers:

- 0071520**, **0071530**: Small fasteners or pins at the top left.
- 250526B910**: A large housing or bracket on the left.
- 0070280**, **0045920**, **0072680**: Components within the housing.
- 253500-920**: A long shaft or rod passing through the assembly.
- 2505520**: A long, thin component at the bottom left.
- 250560A0**: A coupling or connector on the shaft.
- 0045140**, **2505240**, **2505060**, **0045550**, **0045470**: Various small components, possibly bearings or seals, at the top right.
- 253501A920**, **0045340**: A bracket and a small component in the middle.
- 007021A0**, **007015A0**: Small components in the middle.
- 250529-910**, **0045470**: A pulley or wheel and a small component in the middle.
- 250547A0**, **0045470**: A motor or actuator on the right.
- 0045410**, **0045010**, **2045850**: Components at the bottom right.
- 250528-910**, **0045470**, **0045550**: A pulley or wheel at the bottom left.
- 250586-YD0**: A large gear or pulley at the bottom right.

2121860  
2065240  
2510180  
240098-20  
2510160  
2060530  
007021A0  
007021A0  
007021A0  
2510171  
2510180  
179040-050  
0053250  
2060610  
251014-910  
005511-HC0  
針留 Needle holder  
針板 Needle plate  
0045540  
針 Needle  
0045540  
針 Needle

2 本針 (2-Needle)  
3 本針 (3-Needle)

Refer to the gauge parts list.

This exploded view diagram illustrates the components of the needle guard assembly. The parts are labeled as follows:

- G 針受 (後) Needle guard(rear)**: The rear needle guard component.
- 針受(前) Needle guard(front)**: The front needle guard component.
- 0045430**: A small pin or screw used for assembly.
- 0070860**: A larger pin or screw used for assembly.
- 0070130**: A small pin or screw used for assembly.
- 2515120**, **2515110**, and **251513-920**: Various structural components of the assembly.

**7**

**G** ゲージパーツ表  
Refer to the gauge parts list

2520350  
206172-20

252036-920  
0045470

**G** ルーナー  
Looper

0071450  
2520550  
252053-920

0071290

2520480

252037-910  
2400620  
0048050

2520520  
2520390  
0045220

2520420  
2310110  
0045220

252049-910

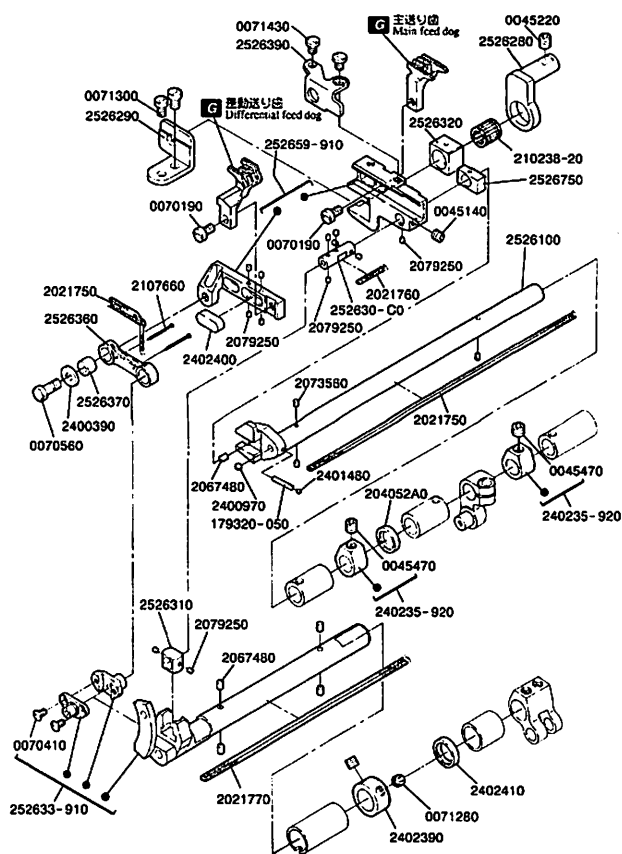
0045430  
2520430  
0070210  
2520410  
2520470  
252045-920

0045240  
2012520  
2402320  
2402310

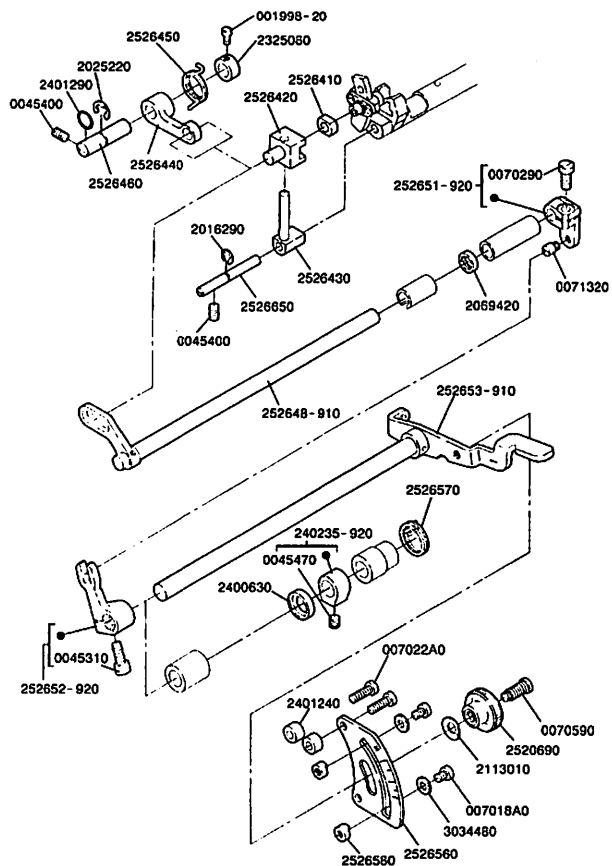
201074A0  
2022860  
0055460

2520440  
252046-920  
0045340

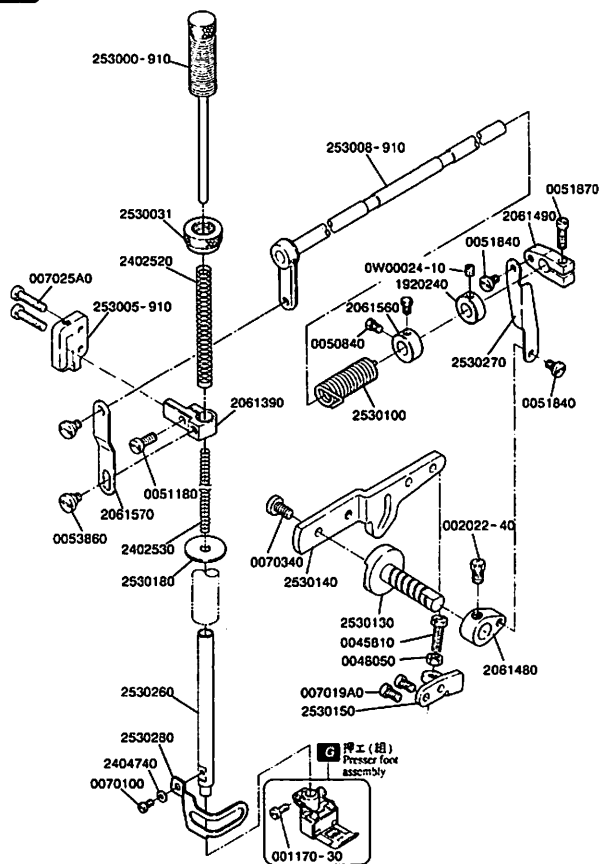
9

G ゲージパーツ表参照  
Refer to the gauge parts list.

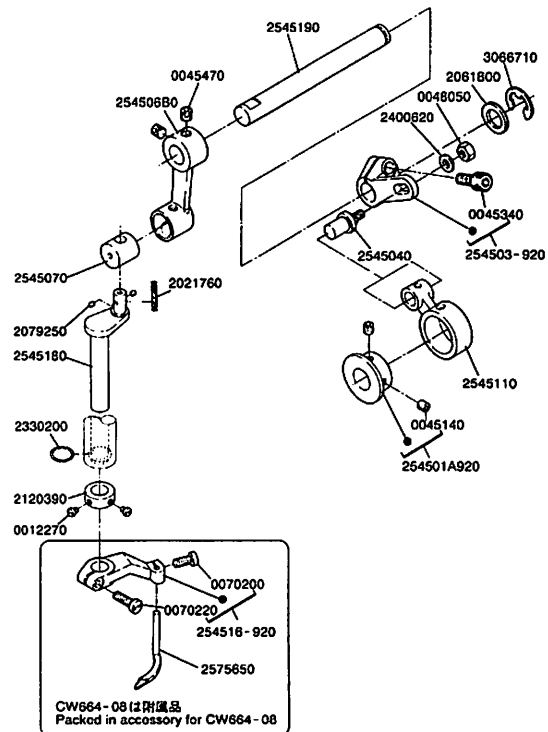
10



11

G ゲージパーツ表参照  
Refer to the gauge parts list.

12



**13**

254023C9T0

3063010

2540190

0054470

007019A0

007019A0

2062030

2540200

2540210

2062020

263542A9T0

263542B9T0

263542C9T0

254003B910

0045310

2028680

2540080

007019A0

2061150

1921200

3034480

007018A0

254000-910

2540220

002133-10

2本針 (2-Needle)

254023E9T0

3063010

2540190

0054470

007019A0

007019A0

2062030

2540200

2540210

2062020

263542A9T0

263542B9T0

263542C9T0

001817-2A0

2103190

263544-TA0

2010370

263543-TA0

2084480

001817-2A0

2103190

263544-TA0

2010860

263543-TA0

2084480

001817-2A0

2103190

263544-TA0

2010680

263543-TA0

2084480

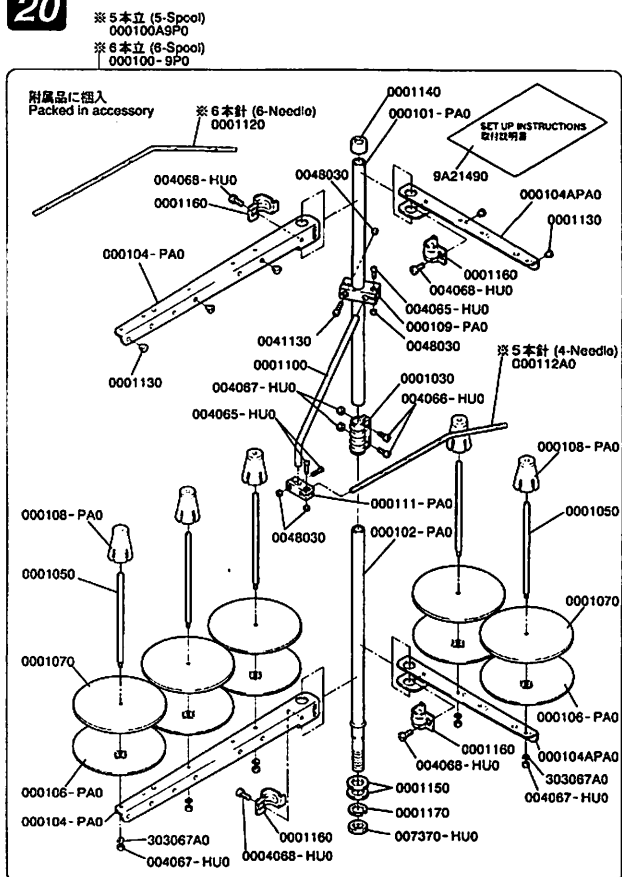
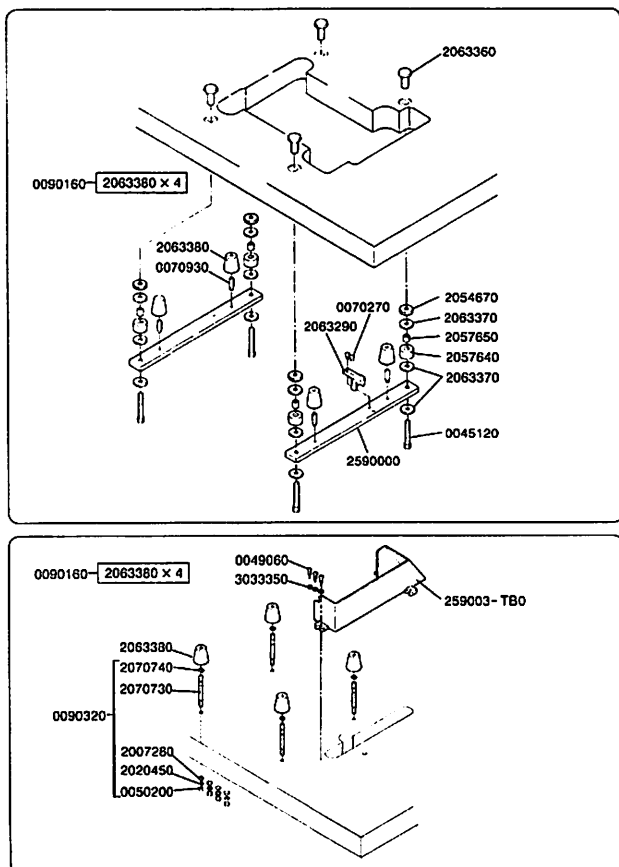
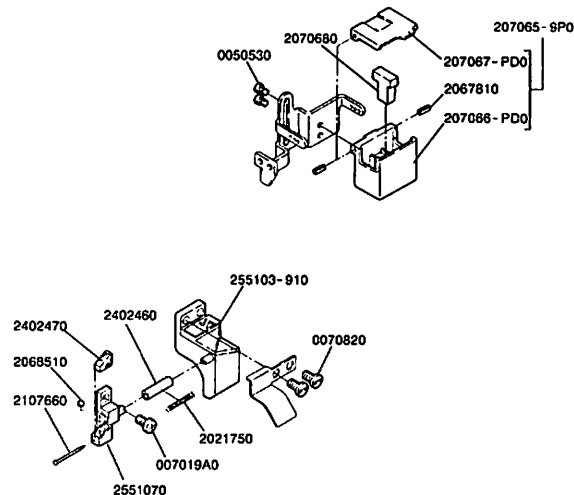
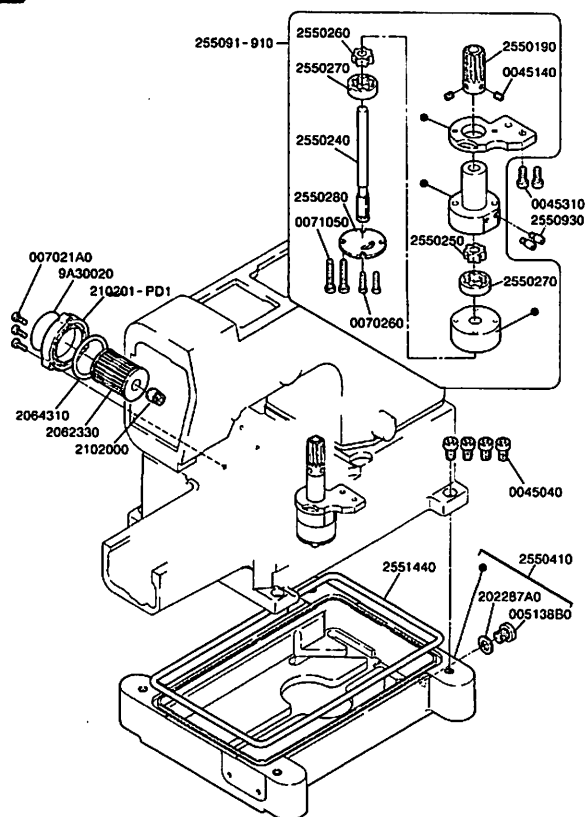
3本針 (3-Needle)

Exploded view diagram of the front suspension assembly, showing various components and their part numbers:

- 0070310
- 2105850
- 253533D0
- 0070820
- 2105850
- 253534A0
- 0045430
- 2401230
- 2536010
- 202647A0
- 253607-910
- 253606A0
- 0071330
- 2535880
- 007018A0
- 0070080
- 253588A0
- 1670790
- 2535860
- 2402420
- 2536800
- 0070090
- 2001830
- 2536000
- 0045540
- 2402610
- 007017A0
- 2536050
- 253693-910
- 0045370

Exploded view diagram of the front suspension assembly, showing various components and their part numbers:

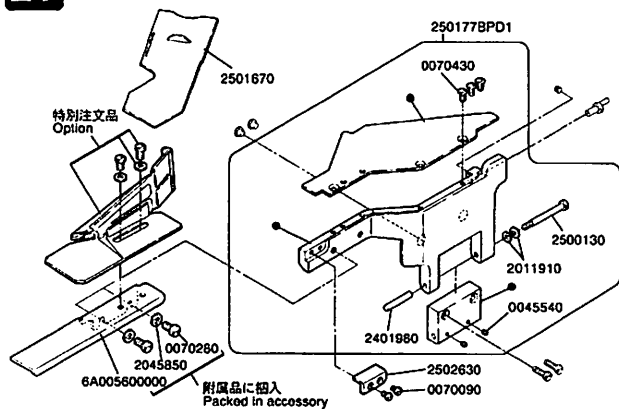
- 0048210
- 0007018A0
- 2550990
- 255097-910
- 0045140
- 2550380
- 2021990
- 2405680
- 2550030
- 2401360
- 2107860
- 0007018A0
- 2550050
- 2550210
- 255094-910
- 0007017A0
- 2021990
- 255100-910
- 2021990
- 2401430
- 2550370
- 2001520
- 2001360
- 2401450
- 2021990
- 2401350
- 2551020
- 2402450
- 2402440
- 2001520
- 2001360
- 2400060
- 2068400
- 200140A0
- 2021990
- 2551230
- 2001520



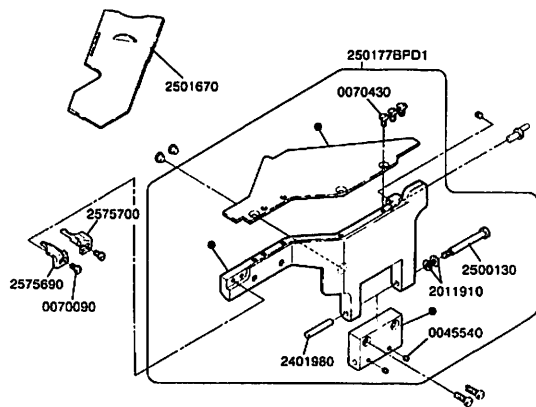


21

CW664-01CB

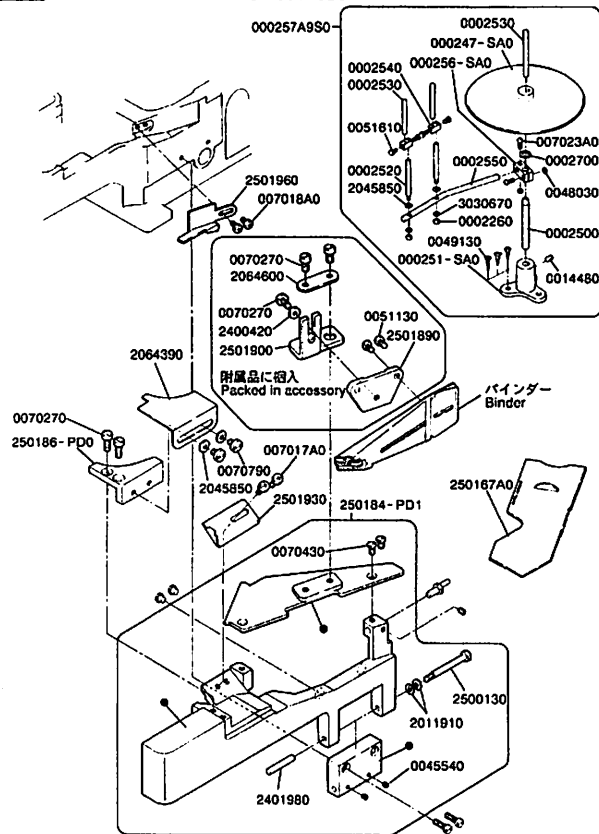


CW664-03FB



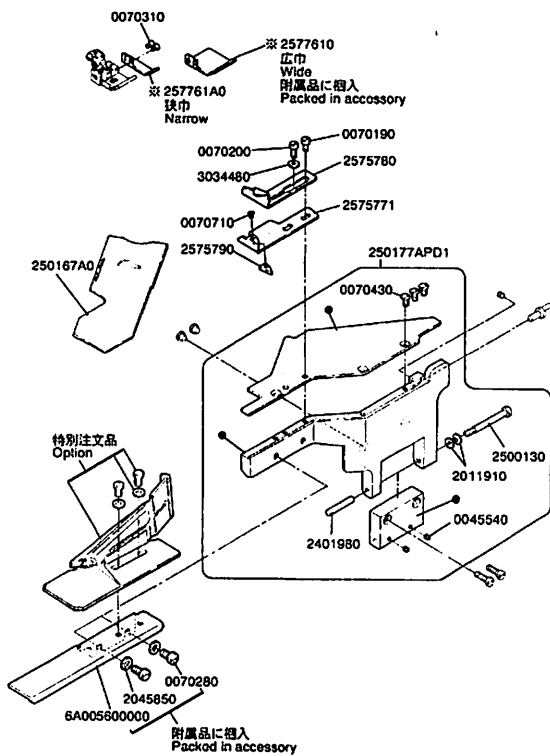
22

CW664-02GB



23

CW664-08BB



## CW664 ゲージパーツ表

## CW664 GAUGE PARTS LIST

形式 MACHINE TYPE /SPEC.	ゲージ GAUGE	針留 NEEDLE HOLDER	針板 NEEDLE PLATE	主送り歯 MAIN FEED DOG	差動送り歯 DIFF. FEED DOG	押エ PRESSER FOOT	ルーバー LOOPER	針受(前) 針受(後) NEEDLE GUARD FRONT REAR		スプレッター SPREADER	針 NEEDLE
CW664-01CB	232	257543-321	257015B320			257480-320					
	240	" 401	" 400	257242-16F1	257289-16F0	" 400					
	248	" 481	" 480			" 480					
	256	257544-561	257017B560			" 560	2575680	2575680	2575670	2575650	UY128GAS # 9S
	264	" 641	" 640	257243-16F1	257290-16F0	" 640					
	356	257544-561	257018B560			257461-560					UY128GAS # 10S
	364	" 641	" 640			" 640					
CW664-02GB	232	257543-321	259628B320	259152-16F0	259267-16F0	257317A320					
	240	" 401	259629B400	259153-16F0	257268-16F0	257318A400	2575680	2575680	2575670	2575650	UY128GAS # 9S
	248	" 481	" 480			" 480					
	356	257544-561	259632B560	259154-16F0	259269-16F0	257321A560					UY128GAS # 10S
	364	" 641	" 640			" 640					
CW664-03FB	232	257543-321	257098B320	257242-16F1		257487-320					
	240	" 401	" 400		259214-16F0	" 400					
	248	" 481	257099B480	259102-16F1		" 480					UY128GAS # 9S
	256	257544-561	257098B560			" 560	2575680	2575680	2575670	2575650	
	264	" 641	" 640	259103-16F1	259215-16F0	" 640					
	356	257544-561	257097B560			257468-560					UY128GAS # 10S
	364	" 641	" 640			" 640					
CW664-08BB	240	257543-401	257107B400	259109-16F1	259219-16F0	257475-400					UY128GAS # 9S
	248	" 481	" 480			" 480	2575680	2575680	2575670	2575650	
	356	257544-561	257108B560	259110-16F1	259220-16F0	257476-560					UY128GAS # 10S
	364	" 641	" 640			" 640					