

Pfaff 3828 1 01

Pfaff 3828 1 02

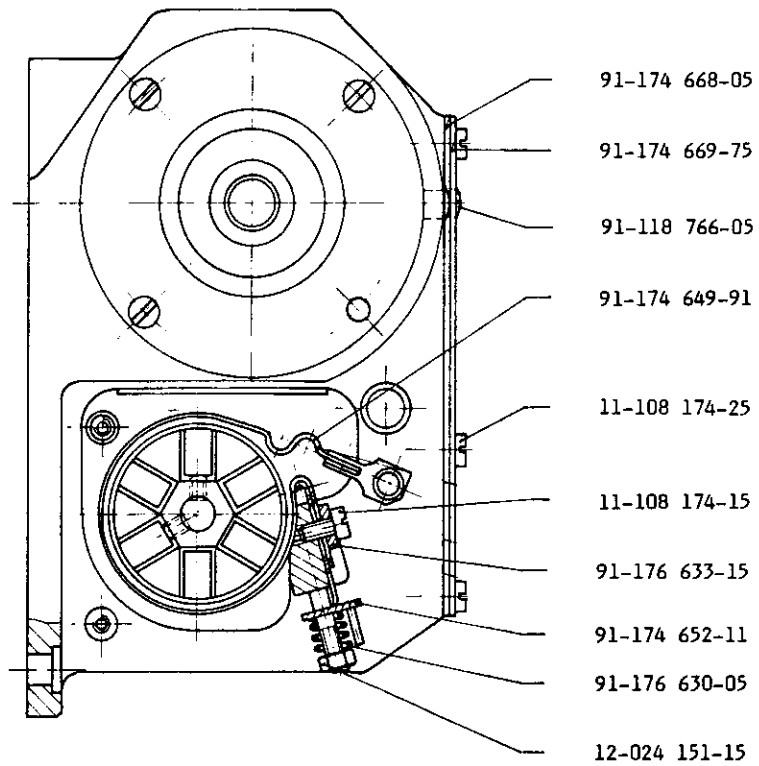
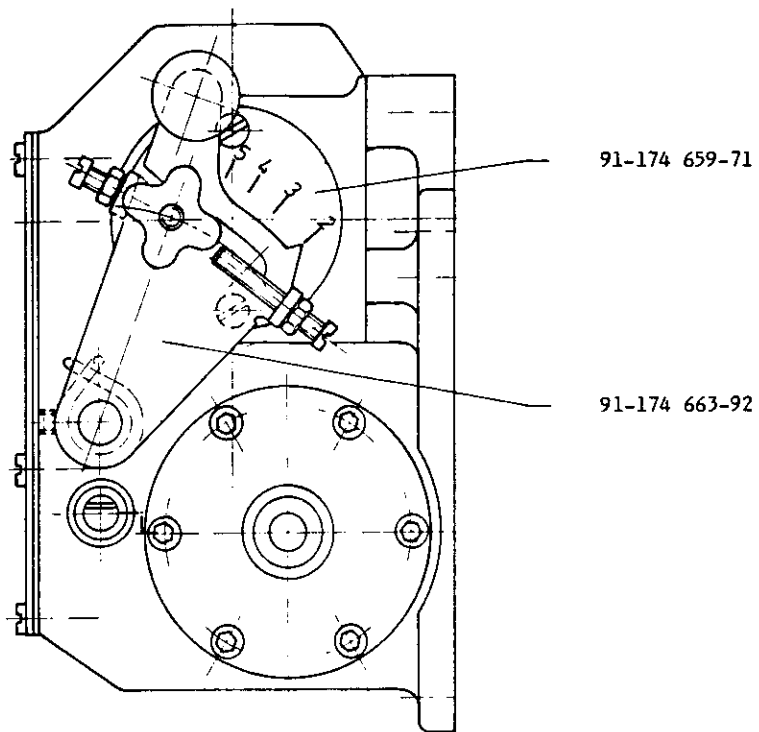


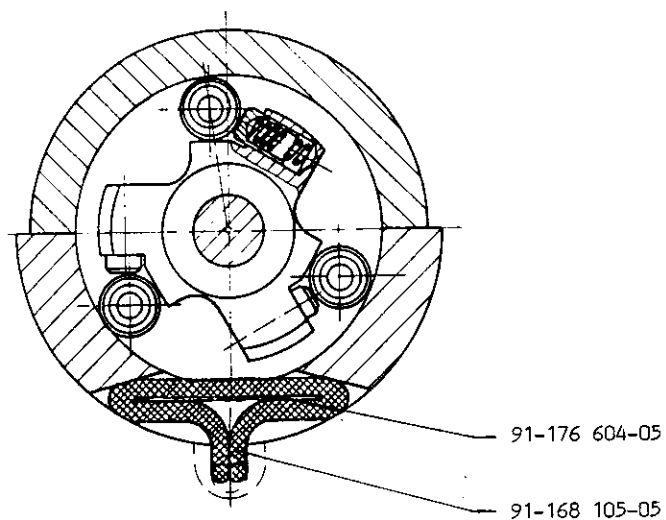
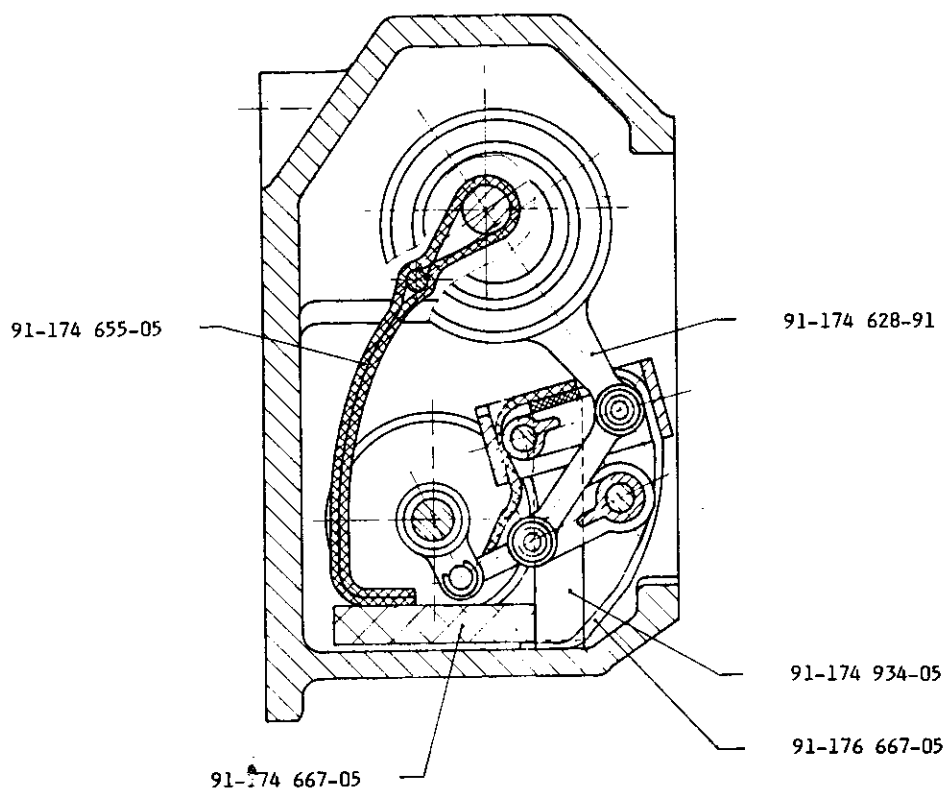
**3828-1/01**  
**-1/02**

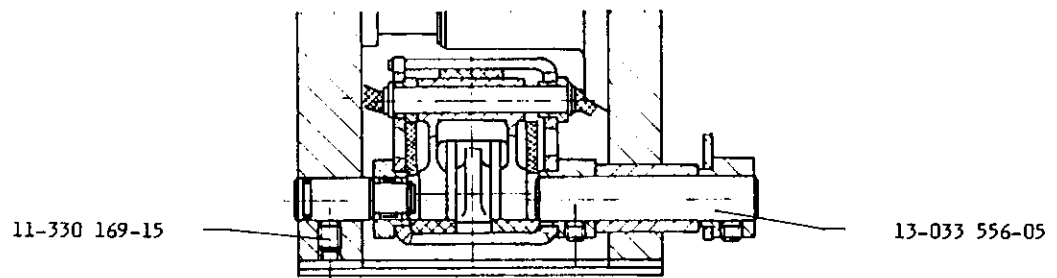
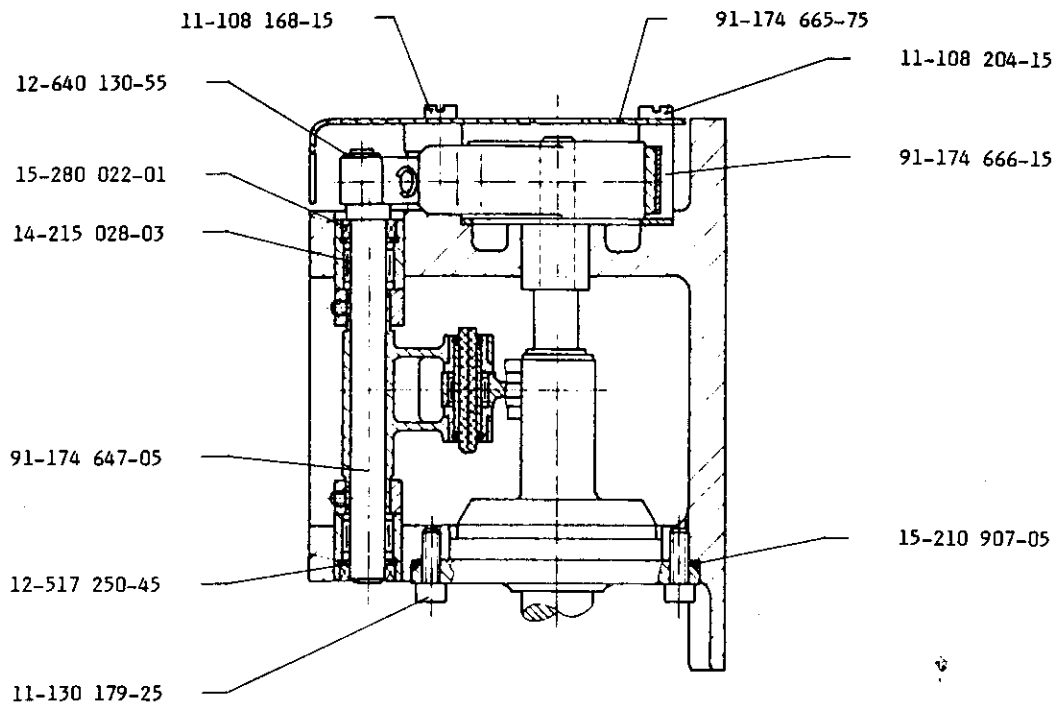
Für die Nähmaschine die Bestandteileliste der Pfaff 483 verwenden.  
For sewing machine please use the spare parts list for the Pfaff 483.  
Prière d'utiliser pour la machine à coudre la liste de pièces détachées  
Pfaff 483.  
Para la máquina de coser, sirvanse utilizar la lista de piezas de repuesto  
de la Pfaff 483.

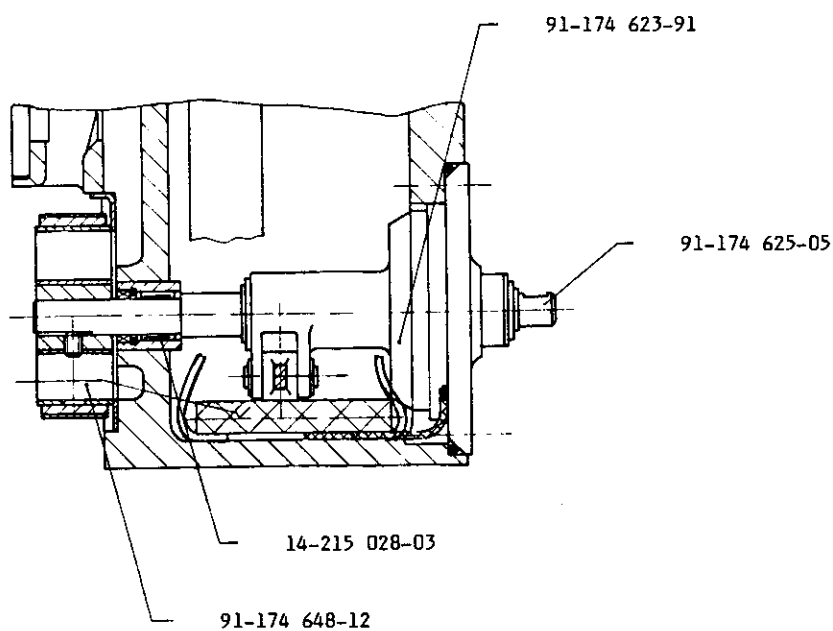
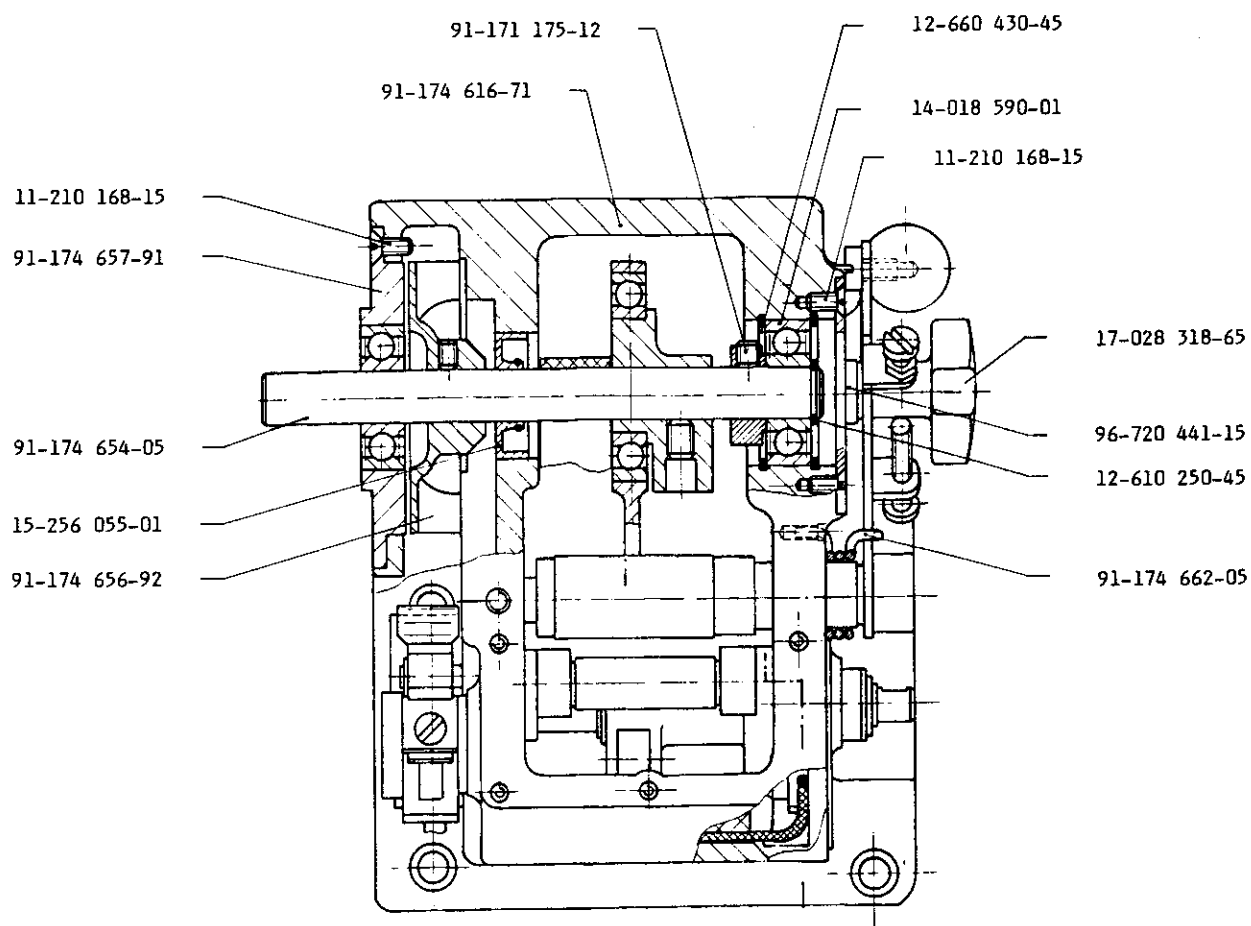
**Teileliste**  
**Parts list**  
**Liste des pièces détachées**  
**Lista de piezas**

|   | Register<br>Section<br>Registre<br>Registro                  |
|---|--|
| Pullertrieb<br>Puller drive<br>Entraînement par puller<br>Accionamiento del puller  | <b>1</b>   |
| Klammerbock<br>Clamp stand<br>Tréteau-pince<br>Caballete portapiezas  | <b>2</b>   |
| Bandtrenner<br>Tape cutter<br>Coupe-bande<br>Cortacintas  | <b>3</b>   |
| Einfäßapparat<br>Binding attachment<br>Bordeur<br>Ribeteador  | <b>4</b>   |
| Ventilplatte<br>Valve plate<br>Plaque-support d'électrovanne<br>Placa de la válvula   | <b>5</b>   |
| Reflex-Lichtschranke<br>Reflex photo-cell<br>Cellule photo réfl.<br>Barrera fotoeléctrica de reflexión  | <b>6</b>   |
| Nähwerkzeuge<br>Gauge parts<br>Organes de couture<br>Organos de costura   | <b>7</b>   |
| Einfäßapparat<br>Binding attachment<br>Bordeur<br>Ribeteador  | <b>8</b>   |
| Bandrollenträger<br>Tape reel bracket<br>Support de tambour-dérouleur<br>Portarrollos   | <b>9</b>   |
| Konstruktionsänderungen vorbehalten.<br>Subject to alterations in design.<br>Sous réserve de modifications.<br>Salvo modificaciones técnicas. | Stand 06.89<br>As of 06.89<br>Edition 06.89<br>Edición 06.89 |







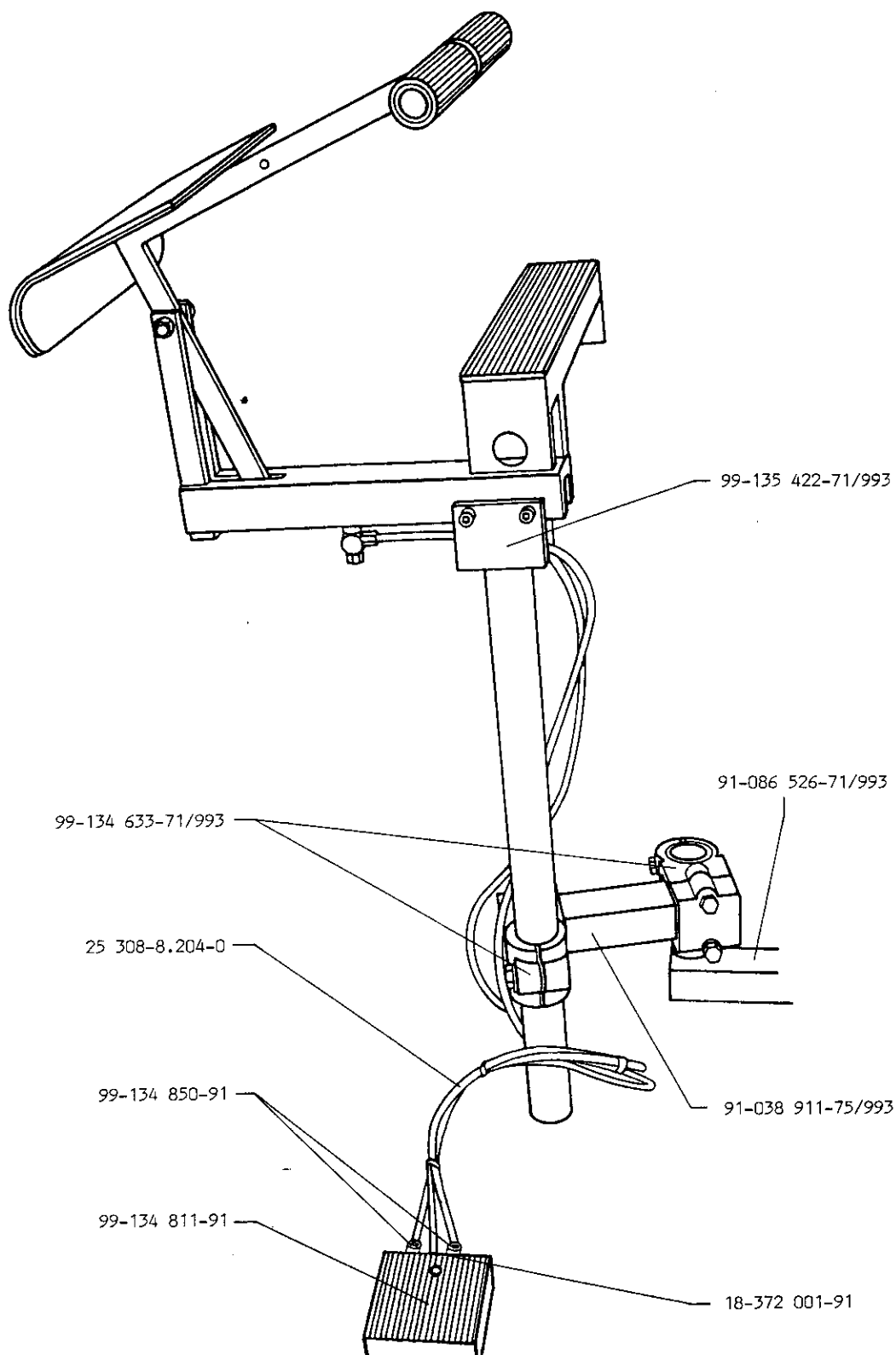


☐ siehe Register „0“

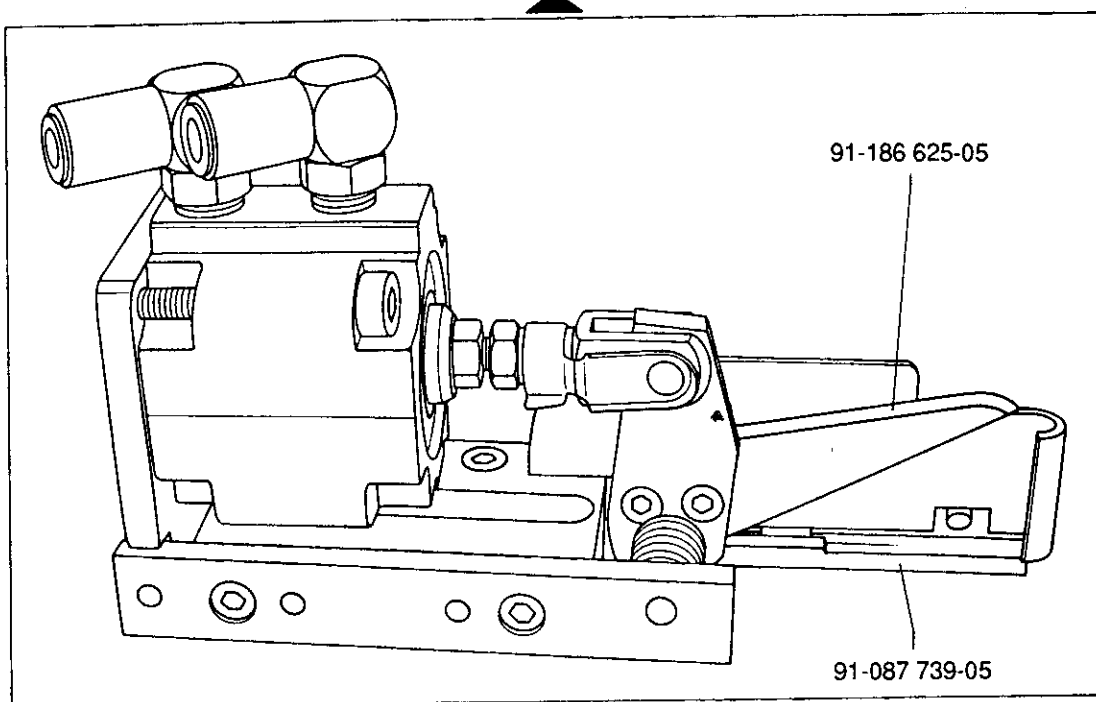
☐ see Section "0"

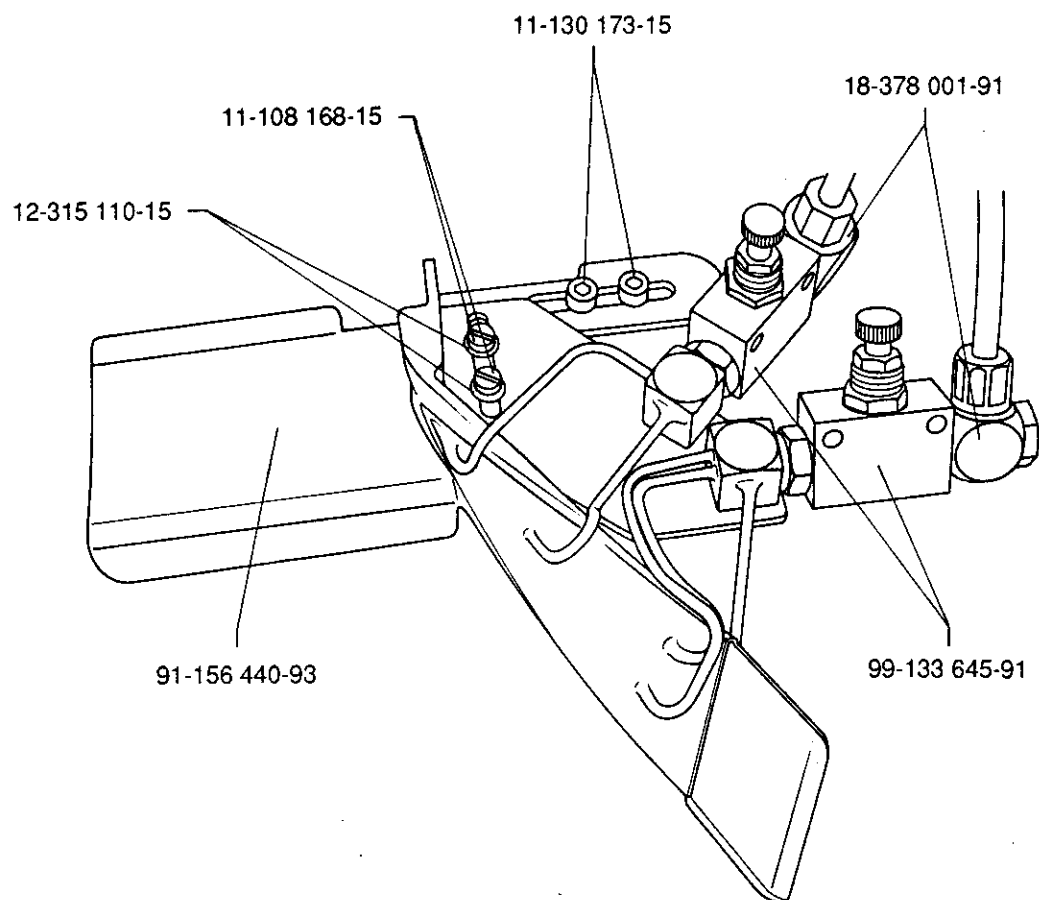
☐ voir registre "0"

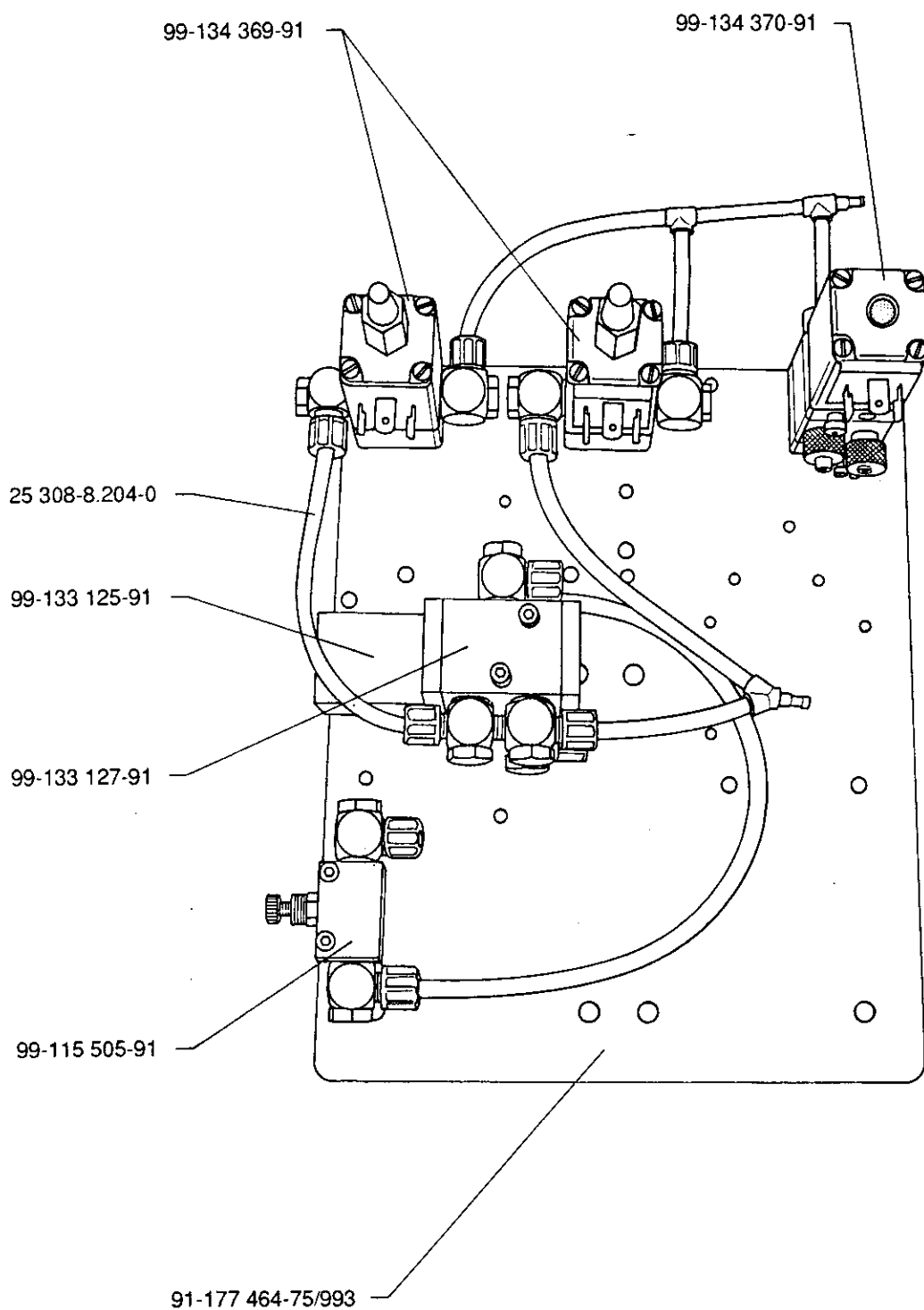
☐ véase Registro "0"

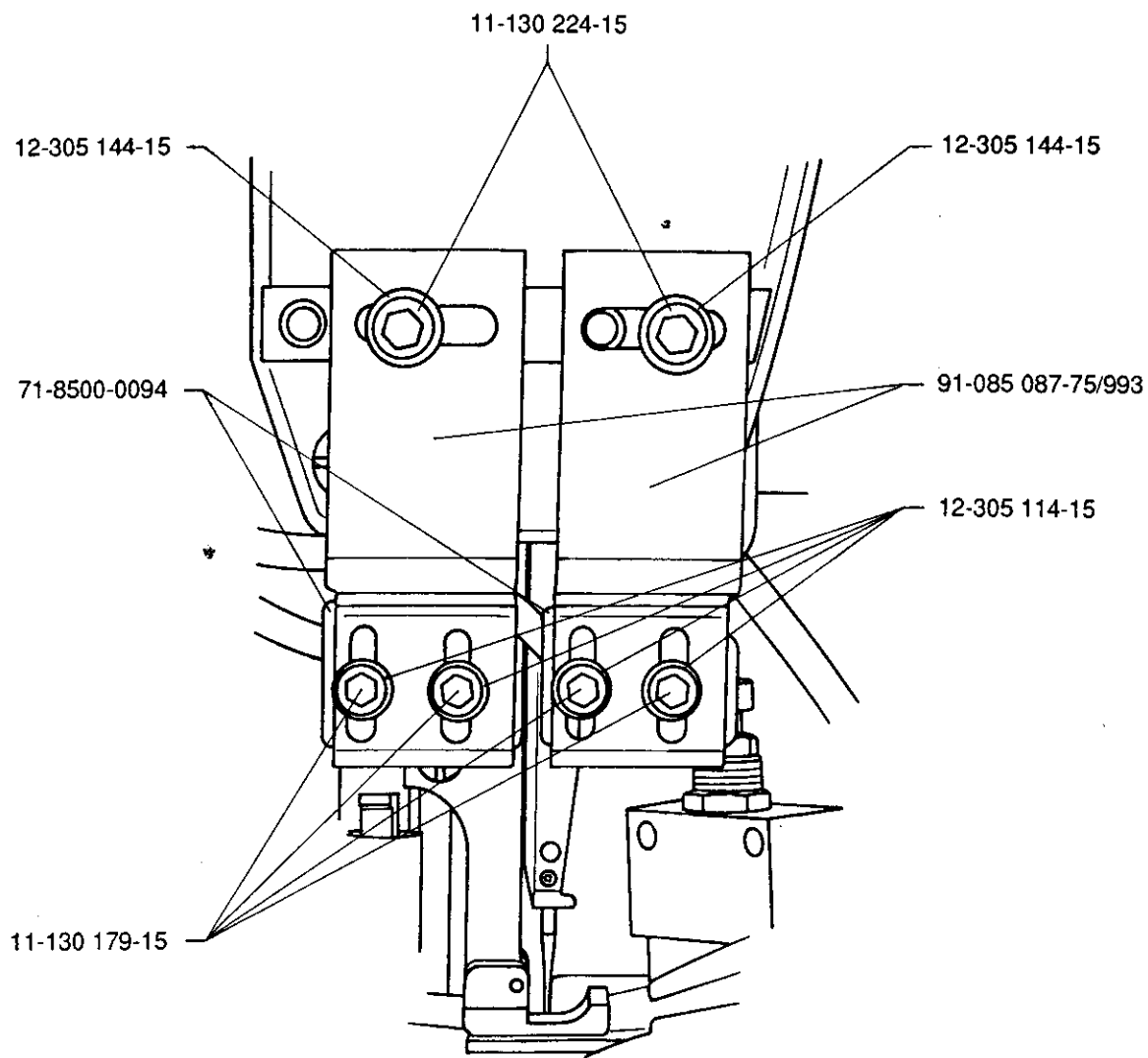


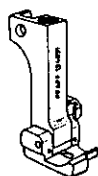
91-087 738-71/995



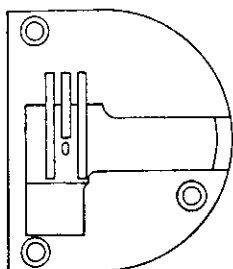








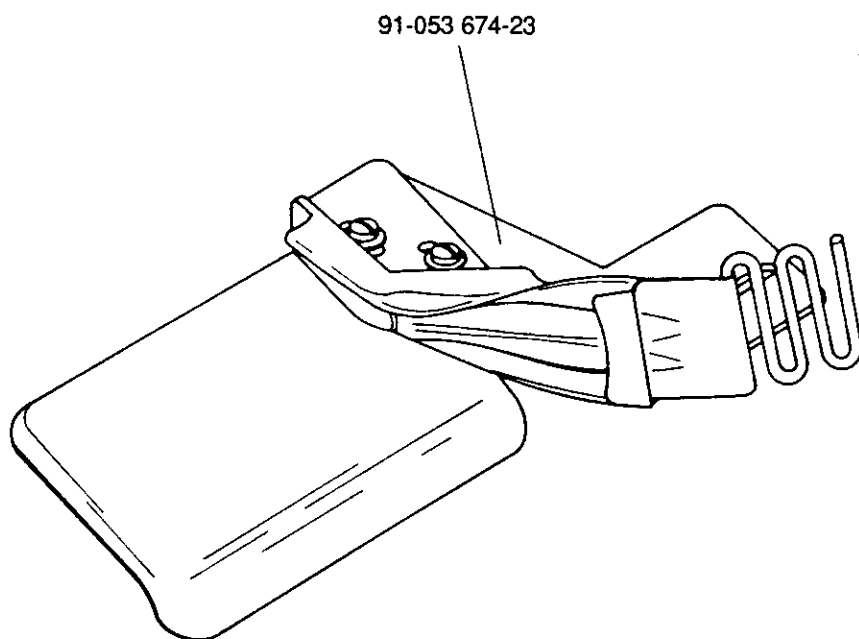
91-154 091-91



91-150 218-04



91-059 808-04



91-050 966-91

91-043 140-71/995 (ø170 mm)

91-043 136-71/995 (ø210 mm)

91-042 138-71/995 (ø260 mm)

