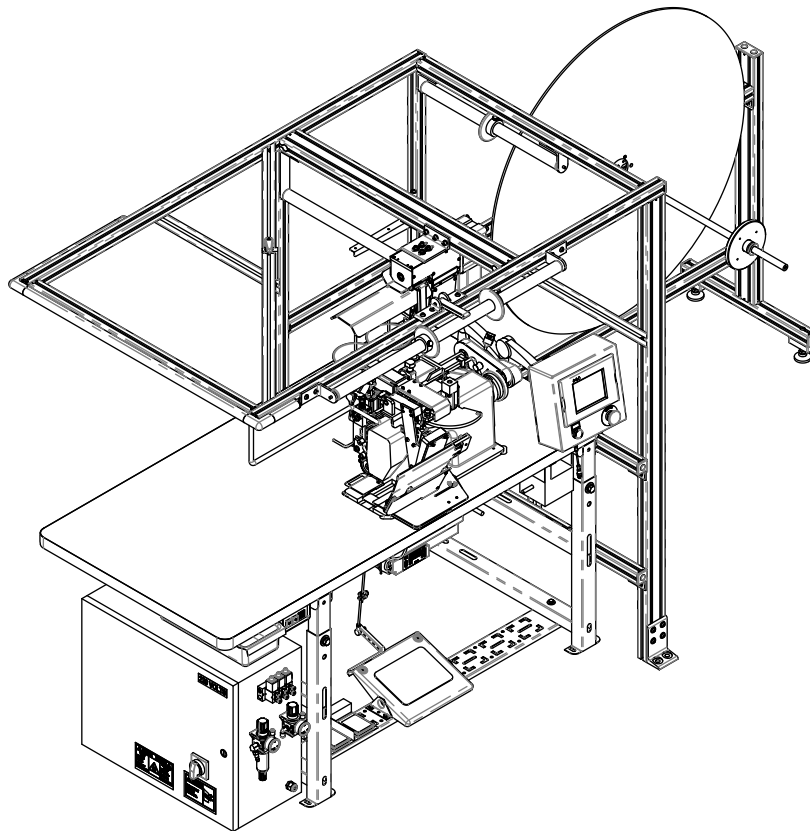


Parts Manual



GPT-1000AP Ruffler System

Copyright © 2010 Leggett & Platt Incorporated. All rights reserved.

Leggett & Platt, the stylized Leggett & Platt logo, the stylized "L&P" logo, Porter, Global Systems Group and the stylized GSG triangle logo are registered trademarks of L&P Property Management Company.

The Porter stylized logo is a trademark of Porter International, Inc.

Adobe and Acrobat are registered trademarks of Adobe Systems, Incorporated.

Porter International, Inc.
A Leggett & Platt Company
131 Zapletal Way
Carthage, Missouri 64836
1-417-358-8131

www.gsgcompanies.com

www.leggett.com

This manual may not, in whole or in part, be copied, photocopied, reproduced, translated, or converted to any electronic or machine readable form without prior written consent of Porter International or Leggett & Platt, Incorporated.

The illustrations, copy, and photography contained in this manual were compiled and edited by the Leggett & Platt Engineering Documentation staff with technical coordination from Porter International. Content is believed to be accurate at time of publication and is subject to change without notice.

Details herein are subject to change without notice.

Printed in the United States of America.

Part number 6ZD032



1914 S. Baker Blvd.
Carthage, Missouri 64836
(417)358-8131 FAX: (417)358-9712
L&P Intranet: <http://zedcenter>
e-mail: zedcenter@leggett.com
©2003 - 2010 Leggett & Platt, Incorporated

How This Manual is Organized.....	ii
CD-ROM Navigation	iv
How to Get Additional Help	vi
How to Give Feedback.....	vii
Main Assembly.....	8
Sewing Head Assembly.....	10
Stand Assembly	12
Puller System, Mod.....	14
Material Handling Assembly.....	16
Puller Assembly	18
Ruffling Plate Assembly.....	22
Ruffler Assembly.....	24
User Interface Assembly.....	36
Electrical Assembly.....	38
Pneumatic Kit.....	54
Part Number Index.....	59

About This Manual

This manual has been developed for persons who will be searching for and ordering parts for this machine. It is imperative that all persons responsible for the operation, care and maintenance of these machines read and understand the information in this manual.

How This Manual is Organized

This manual contains assembly illustrations and parts lists for finding and ordering parts. Assemblies are arranged so that they always occur on an even number page. This is so that the part list for an assembly will begin on the adjacent odd page.

The illustrations contain balloons with numbers in them. The balloon numbers match the numbers in the Item column in the part list.

The part list contains multiple information columns. They are: Item, Quantity (Qty), Assembly (Assy), Description, and Part Number.

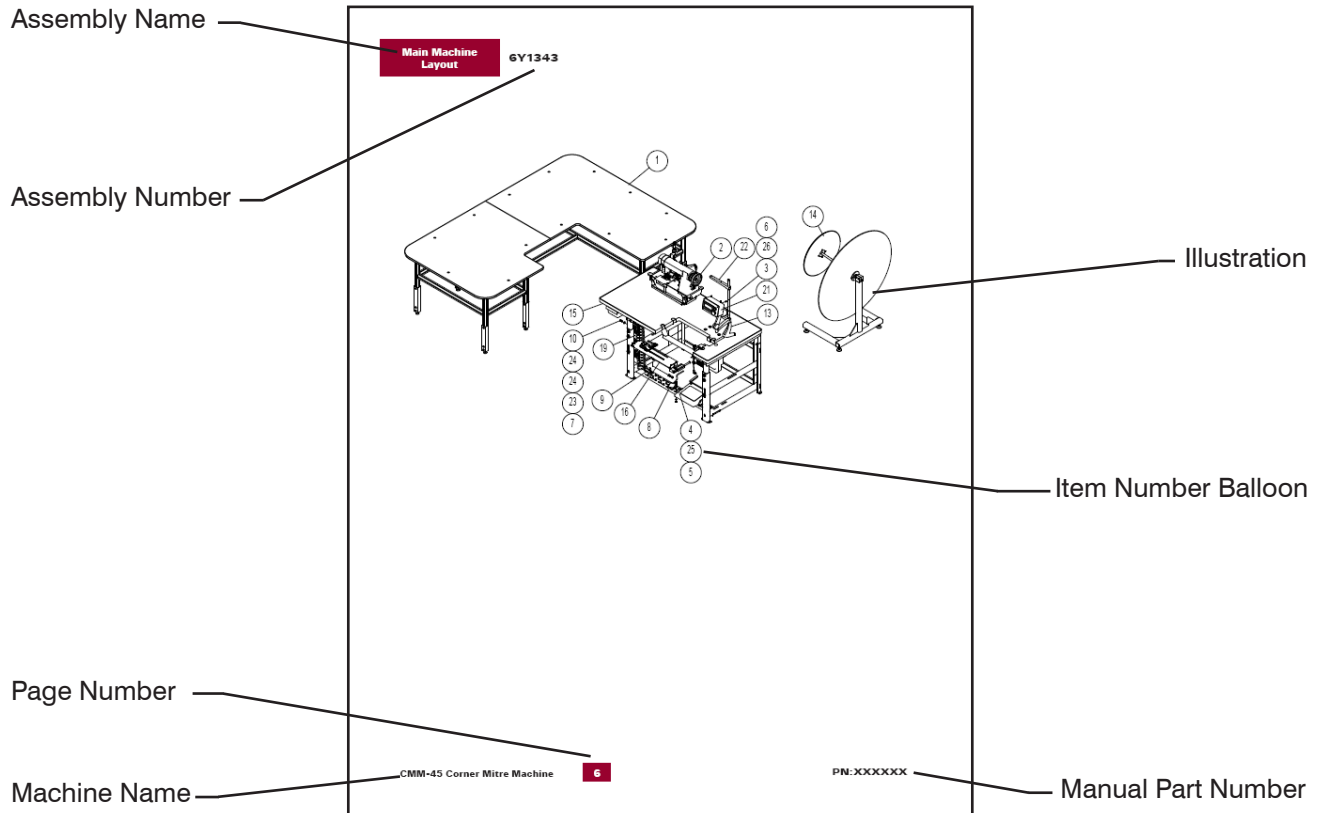
The Item column contains the balloon callout in the illustration. Quantity column (Qty) lists the number of those parts used in the illustration. Assembly column (Assy) identifies that another assembly illustration can be referenced for further part breakdown. The Description column is a description for the part. The Part Number column contains the Porter International part number or stock number for the part. This column also lists the assembly number, if applicable. The entire assembly may be ordered by the assembly number but in most cases only a few parts in the assembly are required. An asterisk preceding an entry in the parts list signifies that more information is available at the end of the part list.

The Assembly column will contain an "S" for Sub-Assembly if there is another assembly breakdown available for a component. If there is a sub-assembly available it can be found following the current assembly illustration and part list. An asterisk preceding an S signifies that more information is available at the end of the part list for the assembly listed. Other notes for parts can be found at the end of the part list for the assembly as well.

The Index contains a list of all of the part numbers and assembly numbers for easy reference. See the following page for an illustration of page layout for this manual.

How This Manual is Organized

About This Manual



Item Number Column

Quantity Column

Description Column

Assembly Column

Part Number Column

Item	Qty	Assy	Description	Part Number
1	1	S	STATIC TABLE ASSY	6Y1273
2	1	S	CMM-45 HEAD ASSY	6Y1342
3	4		BHCS, #8-32 x 3/8	620489
4	2		HEX HD, 1/4-20 x 1/2, FULL THD	621167
5	2		NUT, HEX, 1/4-20	621172
6	4		NUT, HEX, #8-32	621179
7	4		NUT, HEX, 3/8-16	623529
8	1		SWITCH, FOOT, ELEC MOM (401017)	625690
9	1		PNEUMATIC BLOWGUN W/HOSE	627400
10	4		HEX HD, 3/8-16 x 7/8	62A391
11	1		1/4" BULKHEAD CONNECTOR (FSC, STR-BLK+FP-4T) (NOT SHOWN)	62A615
12	12		5/32 TUBE STRAIGHT BULKHEAD, (SPC - STR-BLK-2.5T) (NOT SHOWN)	62B311
13	1		TOUCH SCREEN ARM	62B631
14	1	S	MATERIAL PAYOFF STAND ASSY	62B611
15	1	S	STAND ASSY	62B618
16	1	S	FOLDER ASSY	62B620
17	1		VALVE STATION, 2002 SERIES, 8 MANIFOLD, WITH CONNECTORS (NOT SHOWN)	62B639
18	1		FRL ASSY (NOT SHOWN)	62B640
19	1	S	ELECTRICAL ASSY	62B644
20	1		1/4 NPT TO 1/4 TUBE BRANCH TEE, (SPC - TEE-4MP-4T) (NOT SHOWN)	62B648
21	1		TOUCHSCREEN STATION ASSY	62C103
22	1		2 SPOOL THREAD STAND	CONSEW STAND
23	4		WASHER, LOCK, 3/8	SLW3/8
24	6		WASHER, FLAT, 3/8, SAE	62C119
25	2		WASHER, FLAT, 1/4, SAE	62A335
26	4		WASHER, FLAT, #8, SAE	62D997

PN:XXXXXX

7

CMM-45 Corner Mitre Machine



CD-ROM Navigation

A PDF (Portable Document Format) of this manual is available in full color on CD-ROM and can be viewed or printed from Adobe® Acrobat® Reader.



IMPORTANT! For additional information about Adobe® Acrobat® Reader or to download a free version of Adobe® Acrobat® Reader, please visit www.adobe.com on the internet.

An interactive version of this manual has been created that will use the functionality of the Adobe Acrobat® reader. Hyperlinks and bookmarks have been embedded into the document to allow the reader to jump from one subject to another with minimal effort.

Before using the digital manual, it is recommended that navigational toolbar in Acrobat® be set with all navigation tools available. This is not required to open or read the manual, however if the reader uses a link and “jumps” multiple pages the default Acrobat® settings will only move one page at a time.

To add the needed navigational icons to the toolbar:

1. Open the manual in Acrobat® reader.
2. Check the toolbar to determine if the navigation icons are visible. If only the page forward and page back icons are visible, then go to step 3. If all the icons are present (**fig.1**), then no further action is required.

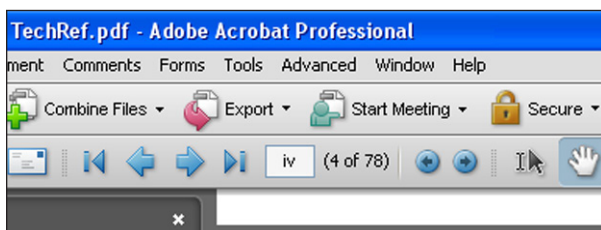


fig.1: A snapshot of the main toolbar with all the navigation tools visible.

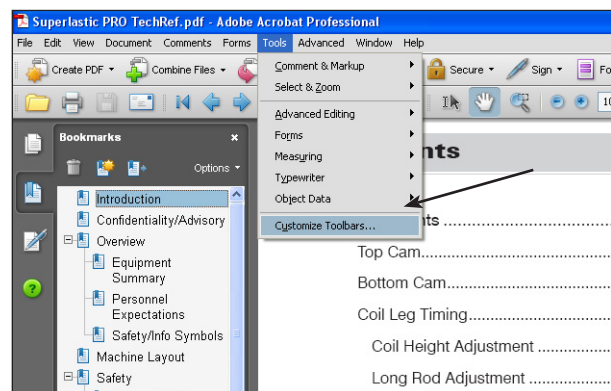


fig.2: The tools menu with customize toolbars highlighted.

3. Left click on the **TOOLS** menu (**fig.2**).
4. Scroll down and left click on the **CUSTOMIZE TOOLBAR** (**fig.2**)
5. Scroll down the **MORE TOOLS** flyout until the “Page Navigation Toolbar” section is visible (**fig.3**).
6. Select (check) all of the empty boxes in the section.
7. Click **OK**.
8. The navigation tools are now on the main toolbar and ready to use.

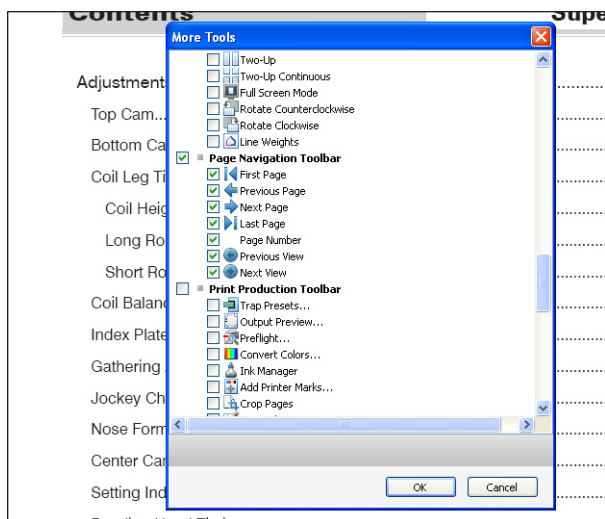


fig.3: A snapshot of the main toolbar with all the navigation tools visible.

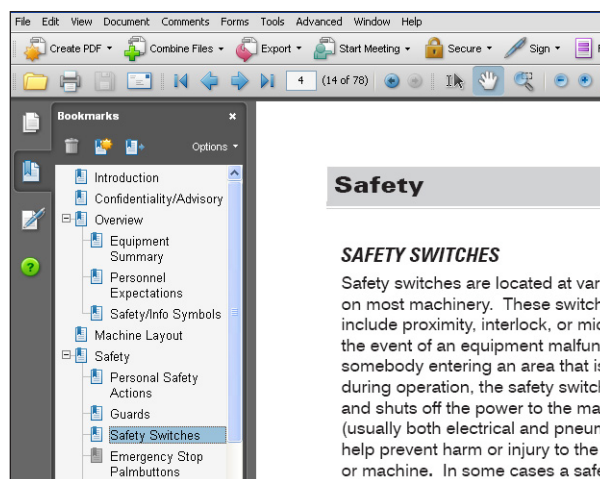


fig.5: Click on a Bookmark topic (left) to open that page in the manual (right).

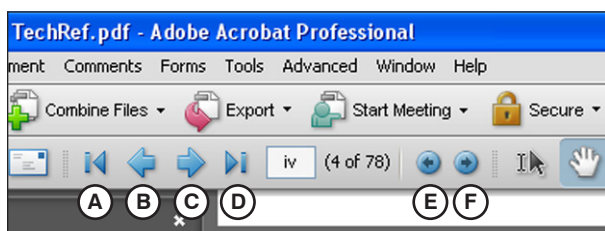


fig.4: The navigational tools.

NAVIGATION CONTROLS

There are many ways to read a document displayed in Acrobat®. First is scrolling up and down with the mouse wheel or scroll bar at the righthand side.

Using the navigation tools (fig.4) will “jump” the screen to and from pages quickly.

In fig.4 the navigation tools are labeled. Following is a list of brief definitions for each of the tools.

- First Page** - Click to go immediately to the first page of the manual.
- Previous Page** - Click to go to the page numerically before the current page. For example, page 10 is on the screen, click this icon to move to page 9.
- Next Page** - Click to go to the page numerically after the current page. For example, page 10 is on the screen, click this icon to move to page 11.
- Last Page** - Click to go immediately to the last page of this manual.
- Previous Viewed** - Click to go to the most recent page that was viewed before the current page. For example, page 10 has a hyperlink that will open page 32. After reading the topic on page 32, click this icon to immediately return to page 10.
- Next Viewed** - Click to reopen the hyperlink destination page after returning to the current page from the destination page with the *Previous Viewed* icon. For example, after returning to page 10 from page 32 (see E above), click this icon to return to page 32.



IMPORTANT! Scrolling will affect how a tool reacts.

Other methods of navigating through the manual include using the Bookmarks menu (**fig.5**) or the Table of Contents to go immediately to a subject page by clicking on that topic. If an index is provided, an index entry page number can be clicked to jump to that page.

There are additional ways to navigate the document in Acrobat®, however this document has been developed to use the tools described here.

HYPERLINKS

Throughout this manual are hyperlinks that, when clicked, will automatically open a destination page that is related to the current topic. These links are indicated with *colored, italicized text*. Table of Contents and Index page numbers are also hyperlinked to the topic listed, but are not stylized. A standard mouse cursor will change into a hand with a pointing finger when the cursor passes over an active hyperlink.



IMPORTANT! Electronic manuals can be e-mailed. They require a minimum of 20MB of available storage space on a server to download.

How to Get Additional Help

There may be times when additional help is needed. Porter International, Inc. is available Monday through Friday, 8:00 a.m. to 5:00 p.m., Central Time. Skilled personnel are trained to help with mechanical, electrical, electronic and computer questions.

There may be times when specific problems might require more attention than what can be delivered through telephone support. In this situation, the technical staff will address the problem and, if necessary, travel to the site. Please be aware that certain fees apply. Contact the Porter International, Inc. service department manager at 1-978-948-8288 for specific information on fees and services.

Answers can be obtained more quickly if the following actions are performed before calling:

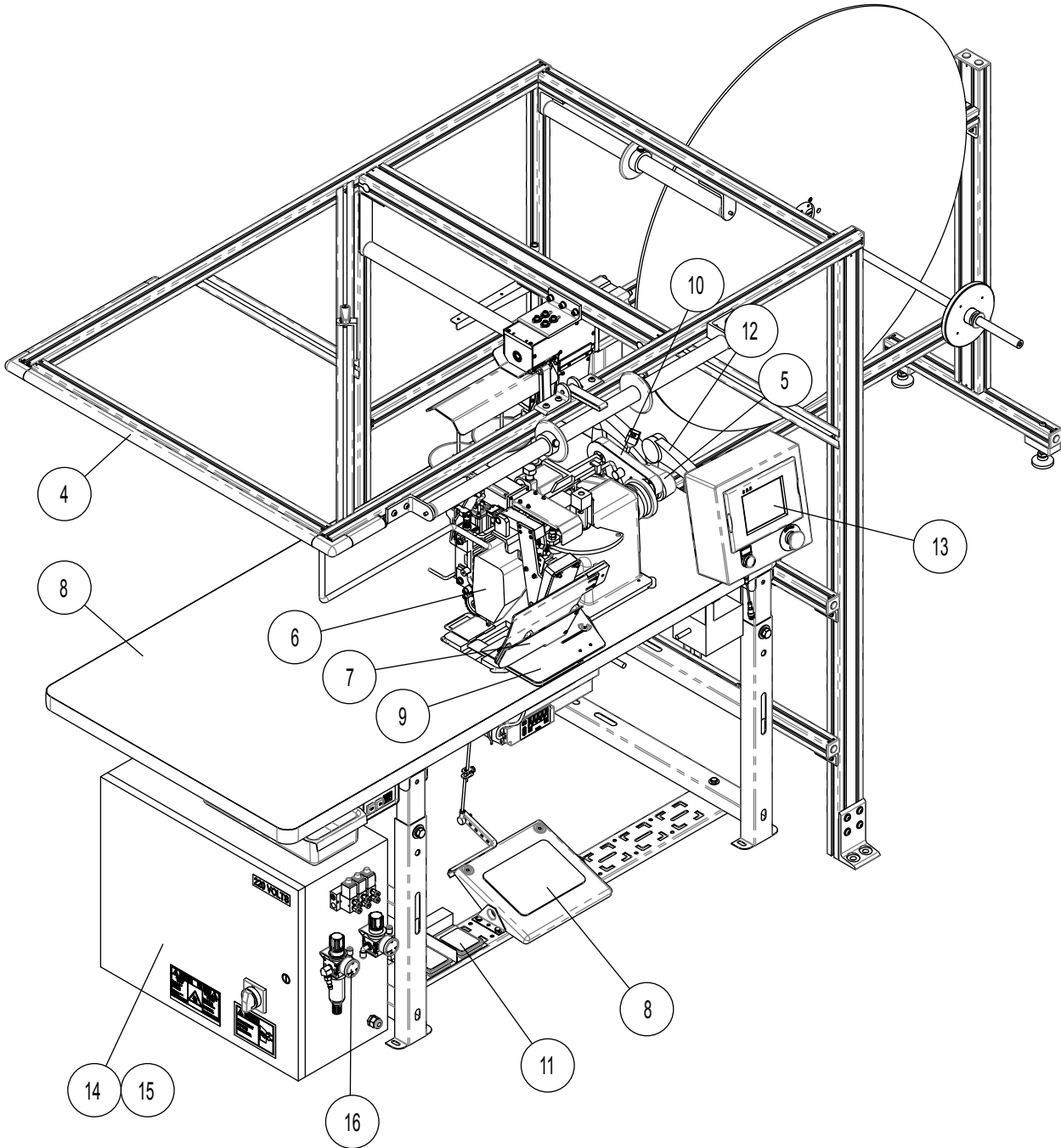
- Try to find the answer in a machine manual.
- Ask a supervisor the question.
- Look up your Customer ID number.
- Make a note of the machine's model and serial number.
- Locate a phone that is close to the machine to make it easier to tell the staff what the machine is doing.

How to Give Feedback

Your ideas are important! Please let us know what you like in this manual, as well as what you don't like. Tell us what you would like to see more or less of, or what you would like to see presented in a different way. We look forward to hearing from you soon.

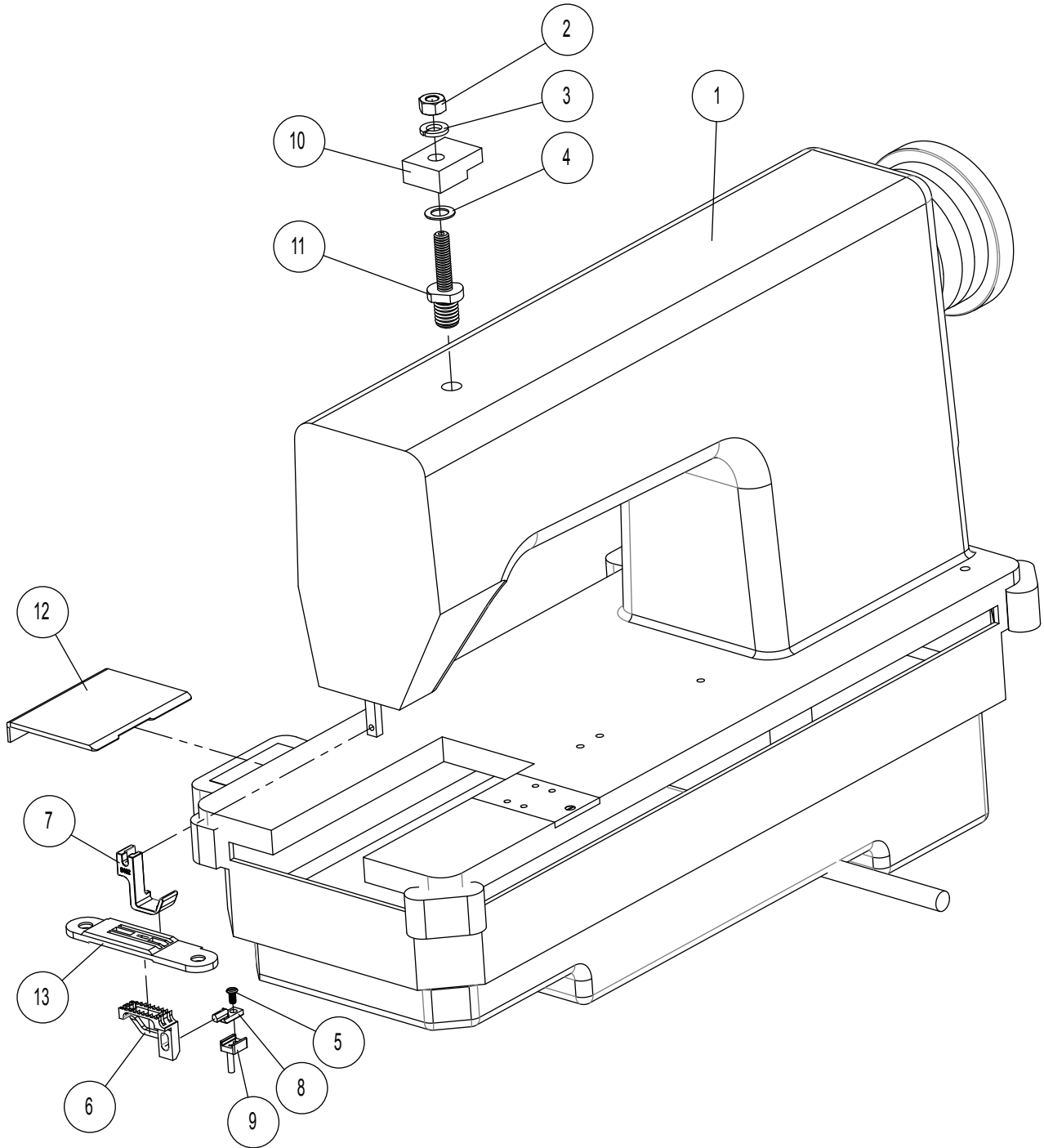
Please address all comments to:

Porter International, Incorporated
Technical Documentation/Engineering
131 Zapletal Way
Carthage, MO 64836 USA
or via the internet at: www.gsgcompanies.com



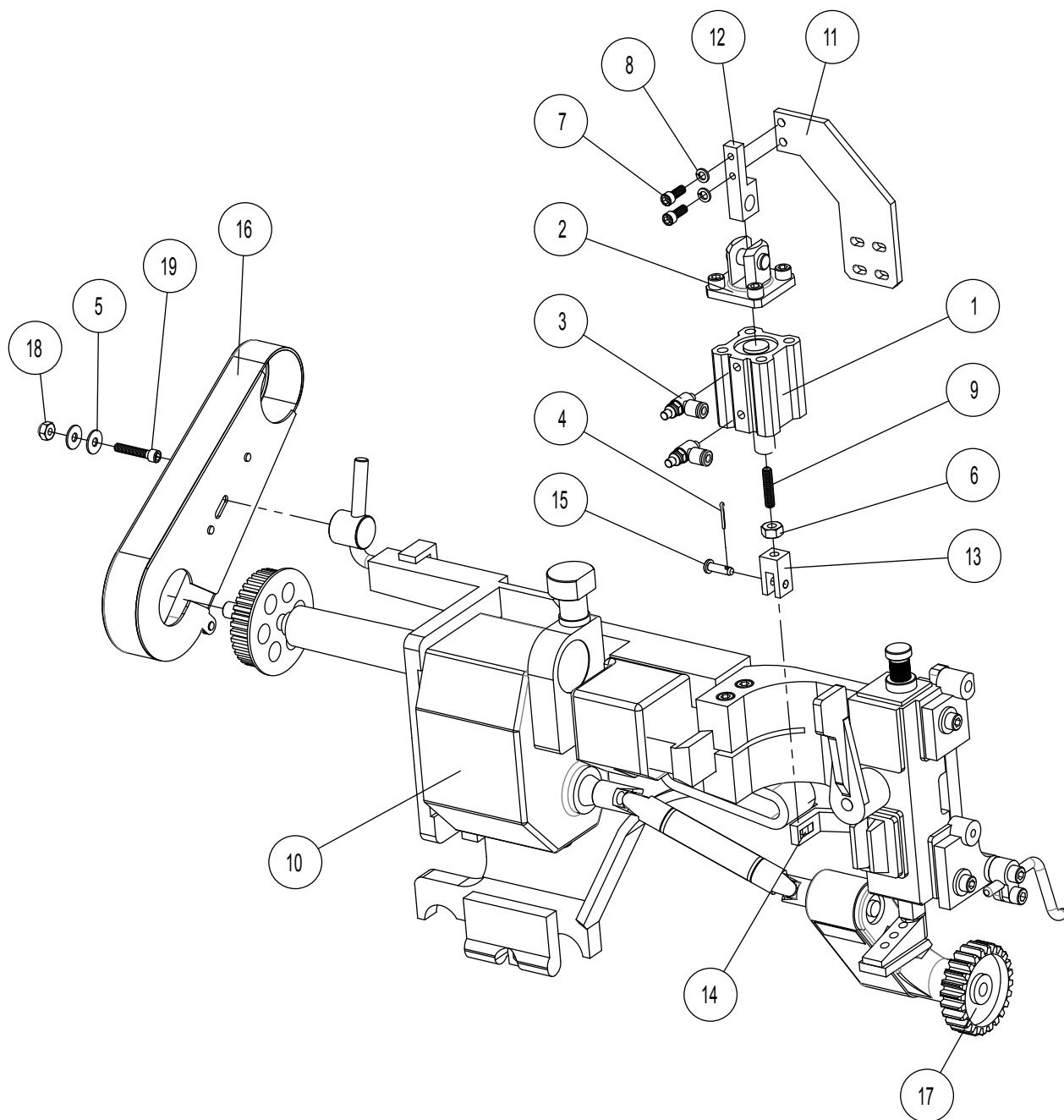
Item	Qty	Assy	Description	Part Number
*1	1		SPARE PARTS KIT, GPT1000-AP	6Z8385
*2	1		CRATE, GPT	6ZA277
*3	1		FA-1 PACKAGING BOXES	FA-1 BOXES
4	1	S	MATERIAL HANDLING ASSY	6Z7954
5	1		POSITION DETECTOR, 1 HP	6Z2991
6	1	S	SEWING HEAD ASSY	6Y1201
7	1	S	RUFFLER ASSY	6Z7990
8	1	S	STAND ASSY	6Z7220
9	1	S	RUFFLING PLATE ASSY	6Z7961
10	1	S	PULLER SYSTEM, MOD	6Z7306
11	1		TWIN FOOT SWITCH, MOM	6Z7152
12	1		TOUCH SCREEN ARM	6ZB631
13	1	S	USER INTERFACE ASSY	6ZC936
14	1	S	ELECTRICAL ASSY	6ZC636
15	2		ENCLOSURE MOUNT	6ZC980
16	1	S	PNEUMATIC KIT	6ZC687

*Items 1, 2 & 3 are not shown.

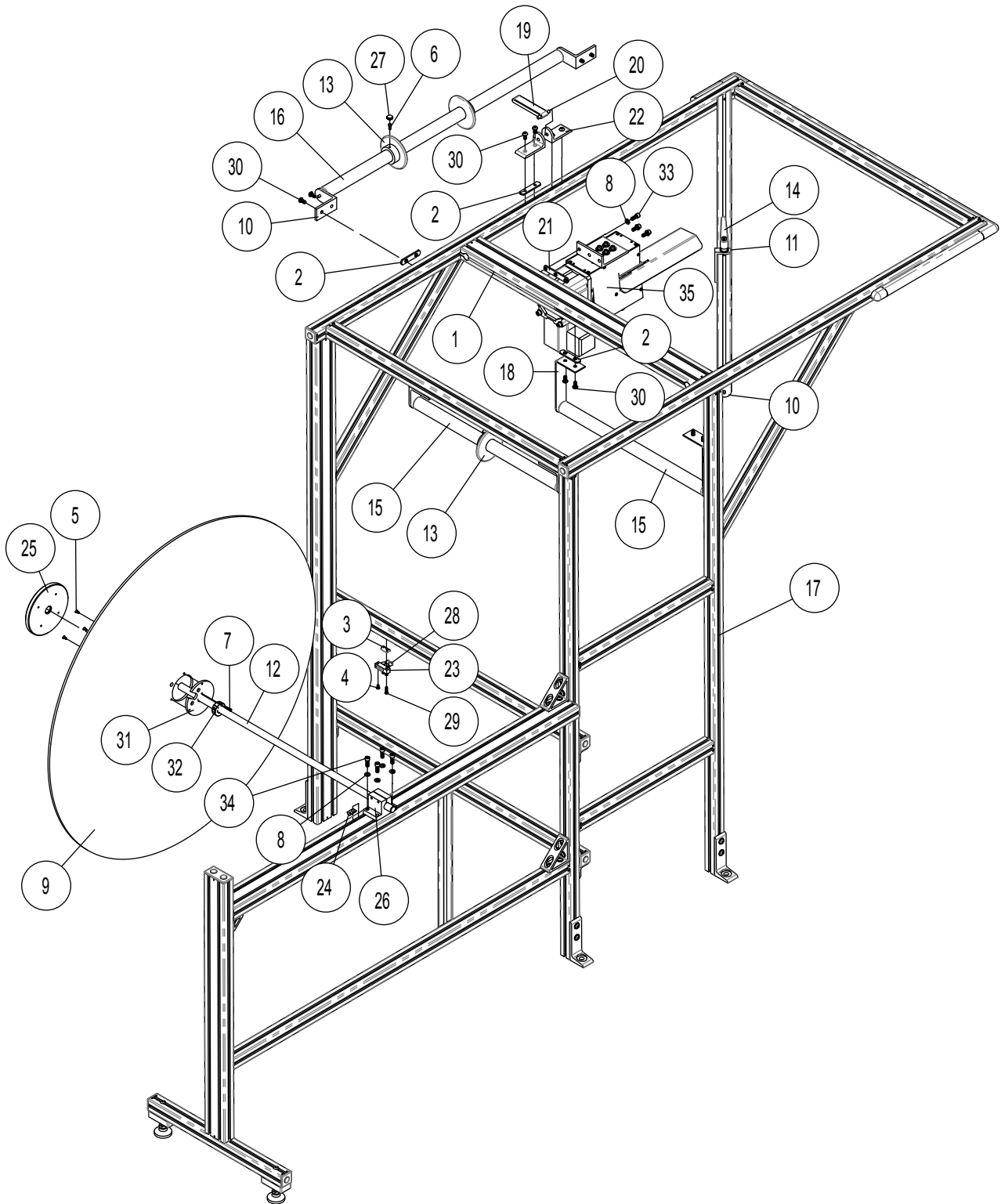


Item	Qty	Assy	Description	Part Number
1	1		SEWING HEAD, MODIFIED	6Y1202
2	1		NUT, HEX, 5/16-18	6Z1176
3	1		WASHER, LOCK, 5/16	6Z2833
4	1		LAMINIATED SHIM, .032 THK, 16 LAYERS, 5/8 OD x 3/8 ID	6Z5273
5	1		SCREW, 9/64-40 x 6	6Z6904
6	1		FEED DOG, MODIFIED, GPT	6Z7241
7	1		PRESSER FOOT, MOD., GPT-1000	6Z7328
8	1		NEEDLE GUARD, GPT	6Z7952
9	1		BASE, NEEDLE GUARD, GPT	6Z7953
10	1		BRACKET, STABILIZER	6Z7994
11	1		STUD, STABILIZER	6Z7996
12	1		WEAR PLATE, PULLER ROLLER, GPT-AP	6Z9731
13	1		NEEDLE PLATE, MODIFIED GPT	6Z9783

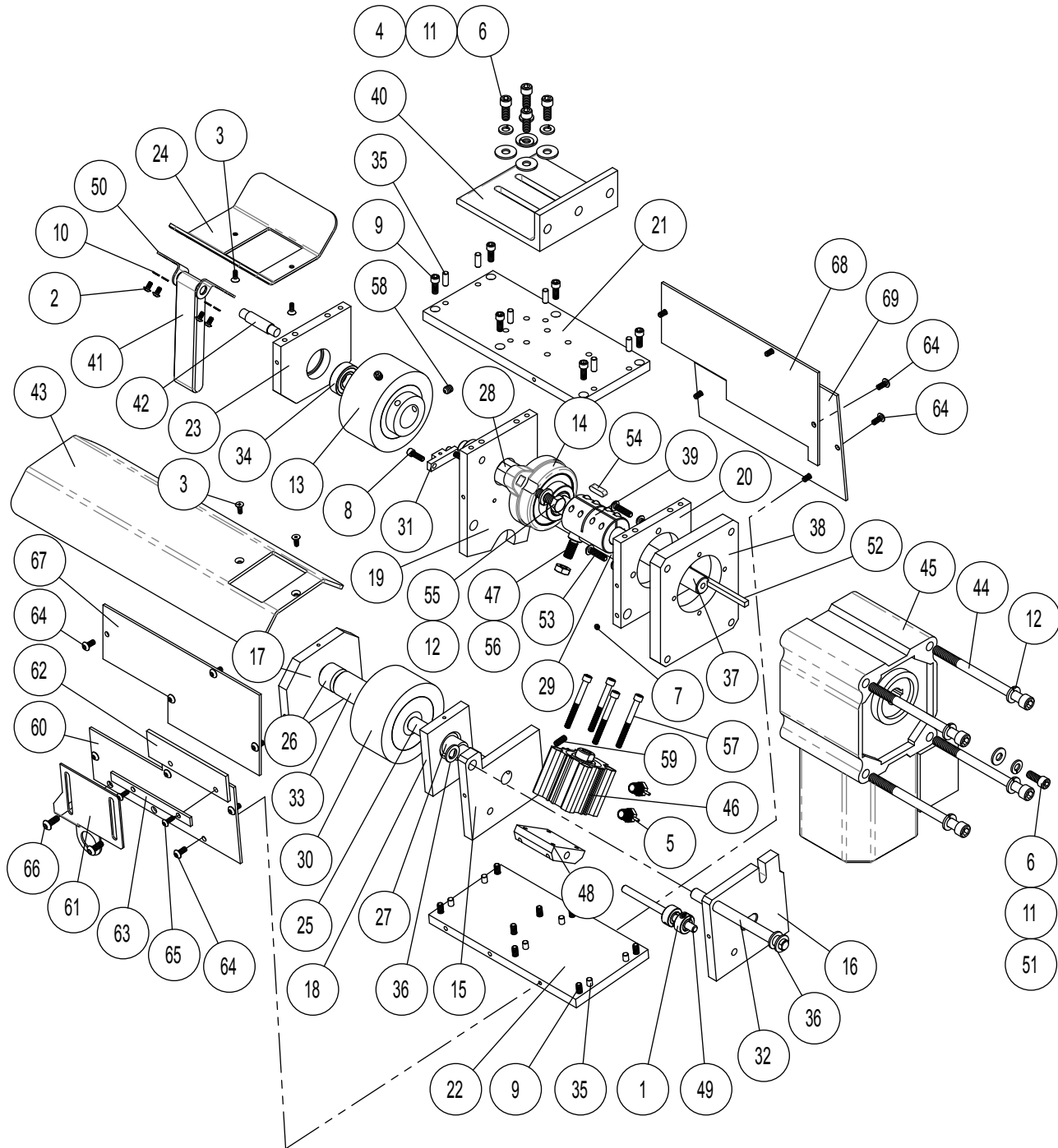
Item	Qty	Assy	Description	Part Number
1	1		DRAWER, TAN	331MAG
2	5.5 FT		WIRE DUCT, 2 x 2	4527002
3	5.5 FT		COVER, WIRE DUCT, 2 x 2	4527003
4	1		WASHER, FLAT, #10	6Z0994
5	16		WASHER, FLAT, 5/16	6Z1002
6	6		NUT, HEX, 5/16-18	6Z1176
7	2		WASHER, LOCK, #8	6Z2830
8	6		WASHER, LOCK, 5/16	6Z2833
9	1		TREADLE W/LUGS & EXT	6Z3227
10	1		41" V BELT	6Z3483
11	2		SCREW, SH/MTL SS FH PH #12	6Z5823
12	1		TABLE TOP, GPT-1000	6Z7230
13	1		COVER PLATE, OPTICAL SENSOR, GPT	6Z7270
14	1		PNEUMATIC BLOWGUN W/HOSE	6Z7400
15	1		3/8 x 1/4 PIPE BUSHING	6Z7421
16	1		BASE, SENSOR ASSY GPT	6Z7496
17	1		BRACKET, SENSOR ADJUST	6Z7497
18	1		BRACKET, SENSOR MOUNT	6ZC782
19	4		BOLT, CARRIAGE, 5/16-18 x 1-1/2	6Z7680
20	2		SHCS, #8-32 x 1	6Z7868
21	1		LIMISERVO	6ZA328
22	2		BLACK RAIL, FLAT 42"	BR-42
23	2		H-LEGS, 30", PAIR, SANDALWOOD	HDH 30" X/RAILS
24	2		HEX HD, 5/16-18 x 2-1/2	HHCS5/16-18X2.5
25	1		BULKHEAD, 3/8 TUBE	KQE11-36
26	1		BOTTOM TREADLE RAIL	TR-42
27	8		TAPPING SCREW #12	TS#12X1
28	7		TAPPING SCREW #12	TS#12X3/4
29	8		TAPPING SCREW #14	TS#14X1
30	1		NUT, WING, #10-32	WN10-32X7/16
31	1		-	LE-FM-2



Item	Qty	Assy	Description	Part Number
1	1		AIR CYLINDER, TILT, 25MM BORE x 25MM STROKE	4001056
2	1		CLEVIS KIT, DOUBLE TILT CYL	4001057
3	2		FLOW CONTROL, M5 x 0.8 TO 5/32 TUBE	4099017
4	1		PIN, COTTER, 1/16 x 1/2	6Z0674
5	2		WASHER, FLAT, #10	6Z0994
6	1		NUT, HEX, 1/4-28	6Z1173
7	2		SHCS, #10-32 x 1/2	6Z2762
8	2		WASHER, LOCK, #10	6Z2826
9	1		SHSS, 1/4-28 x 1, CUP POINT	6Z5634
10	1		PULLER SYSTEM	6Z7127
11	1		PLATE, CYL MOUNT, PULLER	6Z7302
12	1		BRACKET, CYL MOUNT, PULLER	6Z7303
13	1		CLEVIS, CYL ROD END, PULLER	6Z7304
14	1		SPACER, SLOT PULLER LIFT LEVER	6Z7305
15	1		PIN, CLEVIS, 3/16 x 5/8	6Z7307
16	1		COVER, BELT, MODIFIED	6Z7353
17	1		ROLLER UPPER, MODIFIED	6Z8960
18	1		NUT, NYLOCK, #10-32	LN10-32
19	1		SHCS, #10-32 x 1	SHCS10-32X1



Item	Qty	Assy	Description	Part Number
1	1		BLACK T-SLOT COVER	2110
2	10		T-NUT, DOUBLE, 5/16-18	3279
3	1		10-32 T-NUT SINGLE W/SET SCREW	4015016
4	1		BHCS, #10-32 x 3/8	6Z0473
5	3		FHCS, #8-32 x 3/8	6Z0985
6	3		SHCS, #10-32 x 1/2	6Z2762
7	2		SHCS, #8-32 x 5/8	6Z2778
8	7		WASHER, LOCK, 5/16	6Z2833
9	1		DISK, MATERIAL GUIDE 40" DIA	6Z7484
10	6		BRACKET, ROLLER MOUNT	6Z7955
11	1		GUIDE, BORDER MATERIAL	6Z7956
12	1		SHAFT, OFFWINDER	6Z7958
13	3		COLLAR, MATERIAL GUIDE GPT-1000 CF	6Z7999
14	1		L-HANDLE, RATCHETING, RED	6Z8295
15	2		ROLLER CONVEYOR	6Z8297
16	2		ROLLER CONVEYOR	6Z8298
17	1		MATERIAL HANDLING FRAME	6Z8380
18	2		BRACKET, ROLLER MOUNT, LONG	6Z8512
19	1		BRACKET, LOOP CONTROL	6Z8610
20	1		PIN, LOOP BRACKET	6Z8611
21	1		T-NUT TRIPLE, 5-16/18	6Z8812
22	2		BRACKET, PIVOT, 90 DEG, 3 HOLE	6Z8829
23	1		BLOCK, FLOW CONTROL MTG	6Z9612
24	4		5/16-18 DROP IN T-NUT W/ BALL	6ZA280
25	1		MATERIAL CAP ASSY	6ZA854
26	1		STANCHION, .75 ID	6ZA875
27	3		KNOB, PLASTIC, #10 SHCS	94052A131
28	2		4MM TUBE FLOW CONTROL	AS1000F-04
29	1		BHCS, #10-32 x 3/4	BHCS10-32X3/4
30	20		BHCS, 5/16-18 x 5/8	BHCS5/16-18X5/8
31	1		DISC MOUNTING PLATE	BMHS-159
32	1		CLAMP COLLAR	BMHS-160
33	3		SHCS, 5/16-18 x 3/4	SHCS5/16-18X3/4
34	4		SHCS, 5/16-18 x 7/8	SHCS5/16-18X7/8
35	1	S	PULLER ASSY	6ZC641



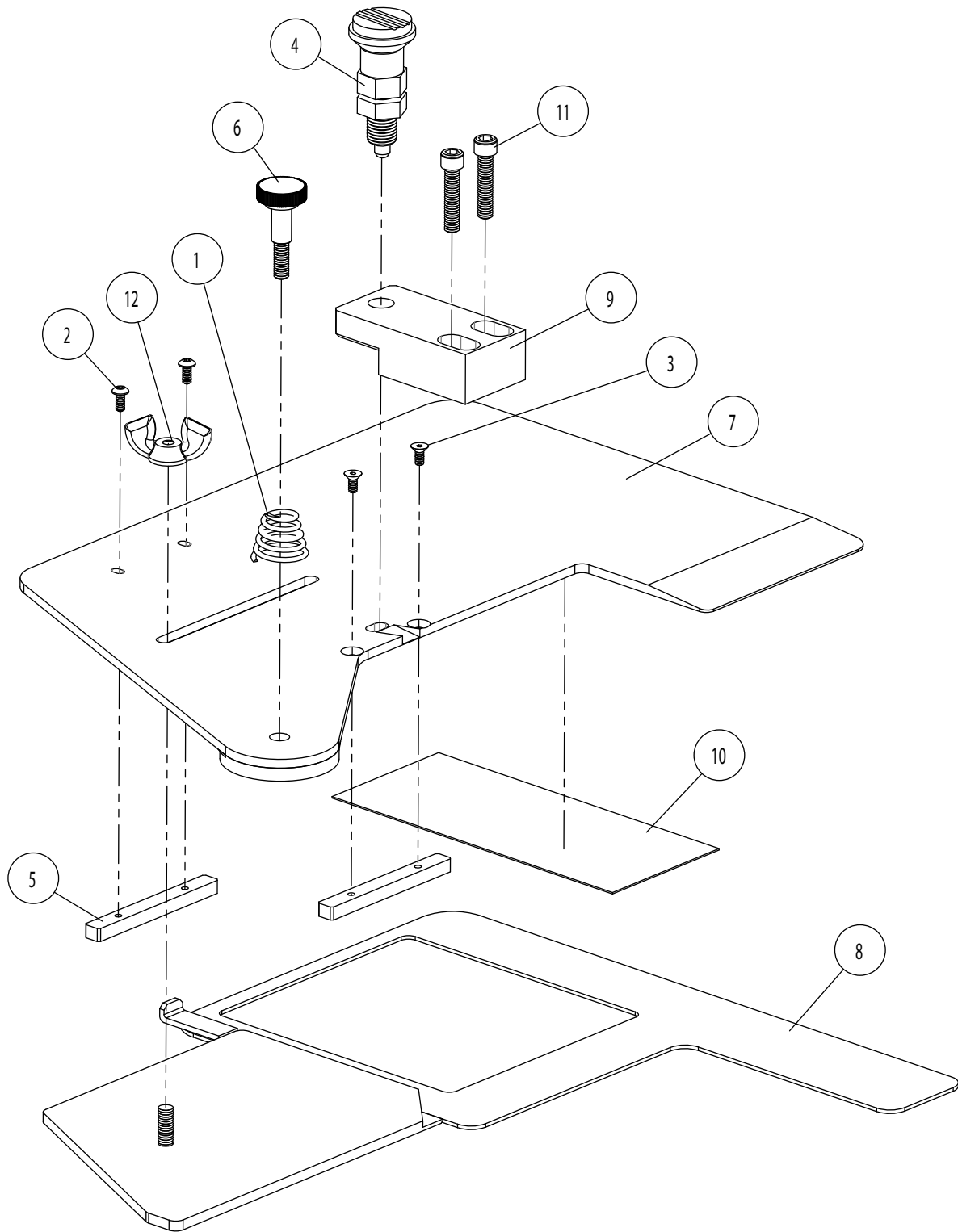
Item	Qty	Assy	Description	Part Number
1	2		1/4 x 5/8 TPC COLLAR	6435K12
2	4		BHCS, #6-32 x 1/4	6Z0488
3	4		FHCS, #6-32 x 3/8	6Z0991
4	4		WASHER, FLAT, 1/4	6Z1000
5	2		BARBED ELBOW FITTING 1/8 NPT	6Z1570
6	5		SHCS, 1/4-20 x 5/8	6Z2682
7	2		SHSS, #10-32 x 1/8, CUP POINT	6Z2750
8	2		SHCS, #8-32 x 1/2	6Z2755
9	14		SHCS, #10-32 x 1/2	6Z2762
10	4		WASHER, LOCK, #6	6Z2829
11	5		WASHER, LOCK, 1/4	6Z2832
12	6		WASHER, LOCK, 5/16	6Z2833
13	1		PINCH ROLLER	6Z6424
14	1		BEARING, PILLOW BLOCK	6Z6435
15	1		BRACKET, PIVOT TOP MID	6Z6439
16	1		BRACKET, PIVOT, TOP END	6Z6440
17	1		BRACKET, UPPER ROLLER	6Z6441
18	1		BRACKET, UPPER ROLLER GUID	6Z6442
19	1		BRKT, MID DRIVE ROLLER	6Z6443
20	1		BRACKET, DRIVE MOTOR MOUNT	6Z6444
21	1		BASE PLATE	6Z6445
22	1		PLATE, UPPER SUPPORT	6Z6446
23	1		BRACKET, END DRIVE ROLLER	6Z6447
24	1		PLATE, BORDER GUIDE	6Z6448
25	1		SHAFT, UPPER ROLLER	6Z6449
26	1		SPACER, THREAD GUARD FRONT	6Z6450
27	1		SPACER, THD GUARD, REAR	6Z6451
28	1		SHAFT, ROLLER DRIVE	6Z6452
29	1		SHAFT, CYLINDER CLEVIS	6Z6457
30	1		PINCH ROLLER, UNWINDER	6Z6460
31	1		BLOCK, BORDER GUIDE PLATE	6Z6461
32	1		SHAFT, ROLLER PIVOT	6Z6462
33	1		BEARING SLEEVE	6Z6468
34	1		BEARING, ROLLER R8 SEALED	6Z6469
35	12		PIN, DOWEL, 3/16	6Z6533

continued on next page ⇨

Item	Qty	Assy	Description	Part Number
36	3		WASHER, SHIM, 3/8 ID	6Z7186
37	1		SHAFT, PULLER DRIVE	6ZC647
38	1		BRACKET, MOTOR MOUNT	6ZC645
39	1		RIGID COUPLING 5/8 x 5/8	6Z7965
40	1		BRACKET, BASE, PULLER	6Z7966
41	1		BRACKET, LOOP CONTROL	6Z8610
42	1		PIN, LOOP BRACKET	6Z8611
43	1		PLATE, BORDER GUIDE, BOTTOM	6Z8976
44	4		SHCS, 5/16-18 x 4-1/4	6Z8987
45	1		GEARMOTOR	6ZC700
46	1		AIR CYL 32B, 20MM S	6Z9676
47	1		ROD END, 32 B, CYL	6Z9680
48	1		BLOCK, CYLINDER REAR CLEVIS	6Z9681
49	1		SHAFT, CYLINDER REAR CLEVIS	6Z9684
50	2		BRACKET, MATERIAL DEFLECTOR MTG.	6Z9736
51	1		WASHER, FLAT, 1/4, SAE	6ZA335
52	1		3/16 x 3/16 x 3.25 LG. KEYSTOCK	6ZC759
53	4		BHCS, #10-32 x 3/4	BHCS10-32X3/4
54	2		CLUTCH KEY	BMHS-150
55	2		HEX HD, 5/16-18 x 7/8, FULL THD	HHCS5/16-18X7/8
56	1		NUT, JAM, 5/16-24	JN5/16-24
57	4		SHCS, #10-24 x 1-3/4	SHCS10-24X1-3/4
58	2		SHSS, 1/4-20 x 5/16, CUP POINT	SS1/4-20X5/16
59	1		SHSS, #10-32 x 1/2, CUP POINT	SS10-32X1/2
60	1		COVER, REAR UPPER	6Z6456
61	1		SENSOR BRACKET	801851
62	1		FINGER GUARD	6Z6466
63	1		FINGER GUARD RETAINER	6Z6465
64	15		BHCS, #8-32 x 3/8	6Z0489
65	2		BHCS, #6-32 x 3/8	6Z0485
66	2		BHCS, #10-32 x 1/2	6Z0480
67	1		COVER, REAR LOWER	6Z6454
68	1		COVER, FRONT, LOWER	6Z6453
69	1		COVER, FRONT, UPPER	6Z6455

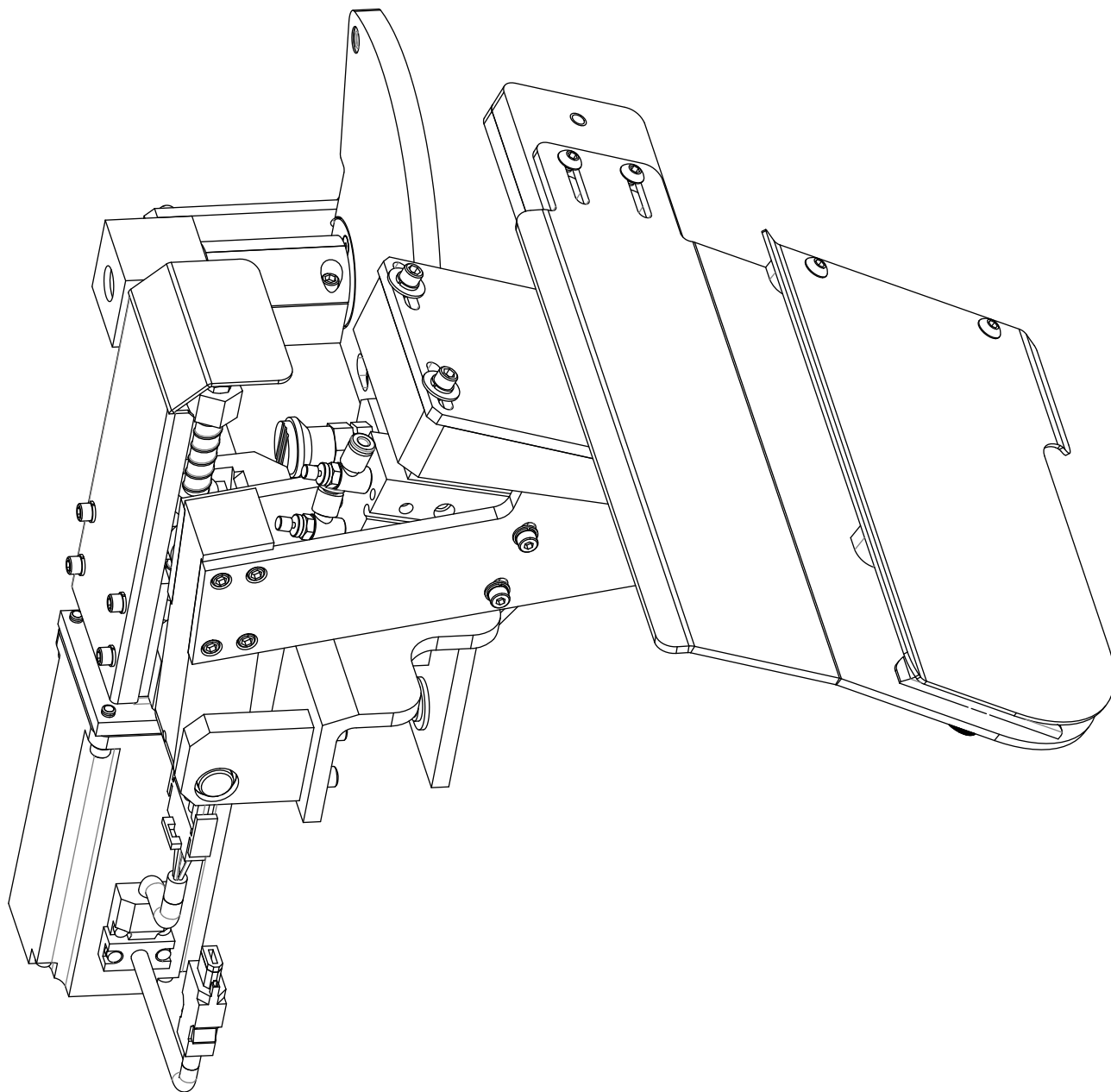
**Ruffling Plate
Assembly**

6Z7961



6Z7961**Ruffling Plate
Assembly**

Item	Qty	Assy	Description	Part Number
1	1		SPRING	225708
2	2		BHCS, #4-40 x 1/4	6Z0484
3	2		FHCS, #4-40 x 1/4	6Z0989
4	1		GIBRALTAR ST INDEXING PLUNGER 3/8-24	6Z7181
5	2		RAIL, SLIDE GUIDE	6Z7476
6	1		PIVOT ASSY, RUFFLING PLATE	6Z7478
7	1		PLATE, RUFFLING GPT	6Z7962
8	1		PLATE, MATERIAL GUIDE	6Z7963
9	1		STOP BLOCK, RUFFLING PLATE	6Z8612
10	1		REFLECTOR 4.75 LG, GPT	6Z9249
11	2		SHCS, #10-32 x 7/8	SHCS10-32X7/8
12	1		NUT, WING, #10-32	WN10-32X7/16



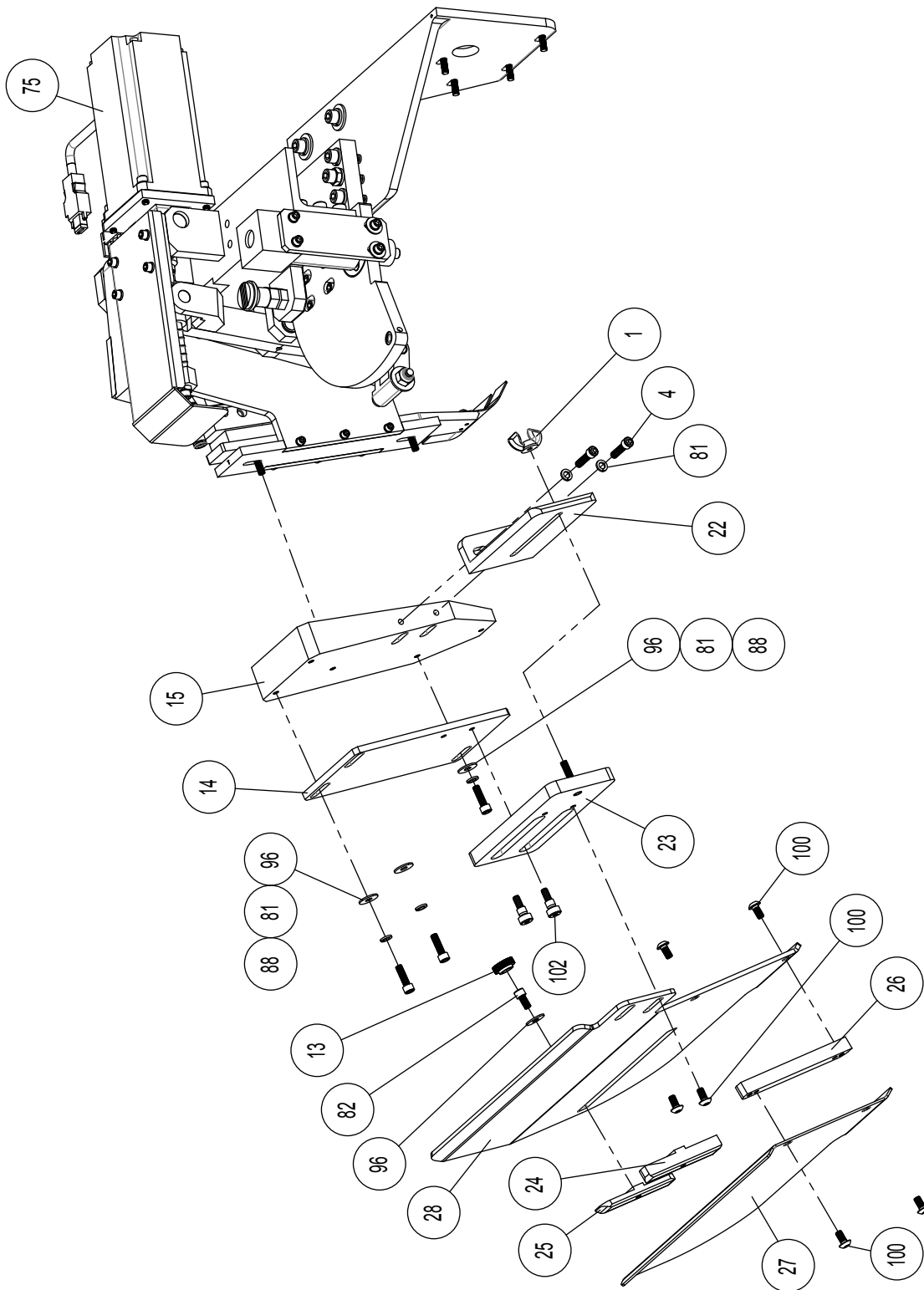
Item	Qty	Assy	Description	Part Number
1	1		NUT, WING, #10-32	WN10-32X7/16
2	6		WASHER, LOCK, M4	SLW-M4
3	2		SHCS, #10-32 x 7/8	SHCS10-32X7/8
4	3		SHCS, #10-32 x 3/4	SHCS-10-32X3/4
5	1		SHCS, #10-32 x 1	SHCS10-32X1
6	4		SHCS, 1/4-20 x 7/8	SHCS1/4-20X7/8
7	2		SHCS, 1/4-20 x 1-1/4	SHCS1/4-20X1-1/4
8	2		SHCS, M4 x 0.7 x 30MM	SHCS-M4X30
9	1		NUT, NYLOCK, 1/4-20	LN1/4-20
10	2		NUT, JAM, 1/4-20	JN1/4-20
11	6		WASHER, FLAT, M4	FW-M4
12	2		BHCS, #8-32 x 1/2	BHCS8-32X1/2
13	1		KNOB, PLASTIC, #10 SHCS	94052A131
14	1		PLATE, FOLDER ADAPTER, GPT-1000AP ONLY	6ZA695
15	1		SPACER, FOLDER ADAPTER, GPT-1000AP ONLY	6ZA693
16	4		SCREW, 11/64-40 x 20MM	6Z7494
17	2		BHCS, #8-32 x 3/8	6Z0489
18	2		BHCS, #6-32 x 1/4	6Z0488
19	2		FLOW CONTROL, M5 x 0.8 TO 5/32 TUBE	4099017
20	1		SUPPORT, SENSOR	801250
21	4		SHCS, M4 x 0.7 x 12MM, LOW HEAD	6ZA219
22	1		BRACKET, GUIDE ASSY MOUNT	6Z9635
23	1		BRACKET, GUIDE ASSY ADJUSTMENT	6Z9634
24	1		SPACER, LEFT, GUIDE GPT-AP W/FAUX TAPE	6Z9627
25	1		SPACER, ADJUSTMENT, GUIDE GPT-AP W/FAUX TAPE	6Z9626
26	1		SPACER, RIGHT, GUIDE GPT-AP W/FAUX TAPE	6Z9625
27	1		PLATE, TOP, GUIDE, GPT-AP W/FAUX TAPE	6Z9624
28	1		PLATE, BOTTOM, GUIDE, GPT-AP	6Z9623
29	2		SHCS, #10-32 x 1/2, LOW HEAD	6Z9534
30	2		DRILL BUSHING, MODIFIED	6Z9257
31	1		BRACKET, MATERIAL HANGING	6Z8969
32	1		BRACKET, LOWER LEVER	6Z7991
33	1		BLADE, RUFFLER, CONTINENTAL	6Z7986
34	1		BRACKET, RUFFLER	6Z7922
35	2		SHCS, #8-32 x 1	6Z7868

continued on next page ⇨

Item	Qty	Assy	Description	Part Number
36	1		SPACER, PLUNGER MOUNT, ASSY	6Z7436
37	1		THRUST WASHER	6Z7435
38	1		SPACER, ADJ., LEAD SCREW	6Z7361
39	1		STOPPER, RUFFLER ARM	6Z7309
40	1		SLIDE, MODIFIED	6Z7255
41	2		FLANGE BEARING, 3/8 ID x 1/2 OD x 1/2 L	6Z7254
42	2		FLANGE BEARING, 1/2 ID x 5/8 OD x 3/8 L	6Z7253
43	2		SPACER, COVER RETAINER	6Z7246
44	1		COVER, LEAD SCREW	6Z7245
45	1		LEVER, FOLDER PIVOT	6Z7242
46	1		SHAFT, LEVER PIVOT	6Z7240
47	1		SHAFT, CLEVIS	6Z7239
48	2		SHAFT, TRUNION	6Z7238
49	2		BRACKET, LEVER PIVOT	6Z7237
50	1		PLATE, PLUNGER MOUNT	6Z7236
51	1		BRACKET, RUFFLER MOUNT	6Z7235
52	1		BRACKET, MAIN, RUFFLER	6Z7233
53	1		BRACKET, MOTOR PIVOT	6Z7232
54	1		BRACKET, FOLDER PIVOT, LEFT	6Z7231
55	1		BRACKET, FOLDER PIVOT, MIDDLE	6Z7229
56	1		SHAFT, HINGE	6Z7228
57	1		PLATE, HINGE RETAINER	6Z7227
58	1		HINGE, TOP	6Z7226
59	1		HINGE, MIDDLE	6Z7225
60	1		HINGE, LOWER	6Z7224
61	1		PLATE, LOWER HINGE MOUNT	6Z7223
62	1		BRACKET, BLADE MOUNT	6Z7222
63	1		BRACKET, LEVER, LEFT	6Z7219
64	1		BRACKET, LEVER, RIGHT	6Z7218
65	1		LINK, PLEATER	6Z7216
66	1		SHAFT, CLEVIS	6Z7215
67	1		SHAFT, FOLDER PIVOT	6Z7214
68	1		RETAINER, BLADE	6Z7212
69	1		MOTOR MOUNT, TRUNION	6Z7211
70	1		LEAD SCREW W/NUT, GPT-1000	6Z7209

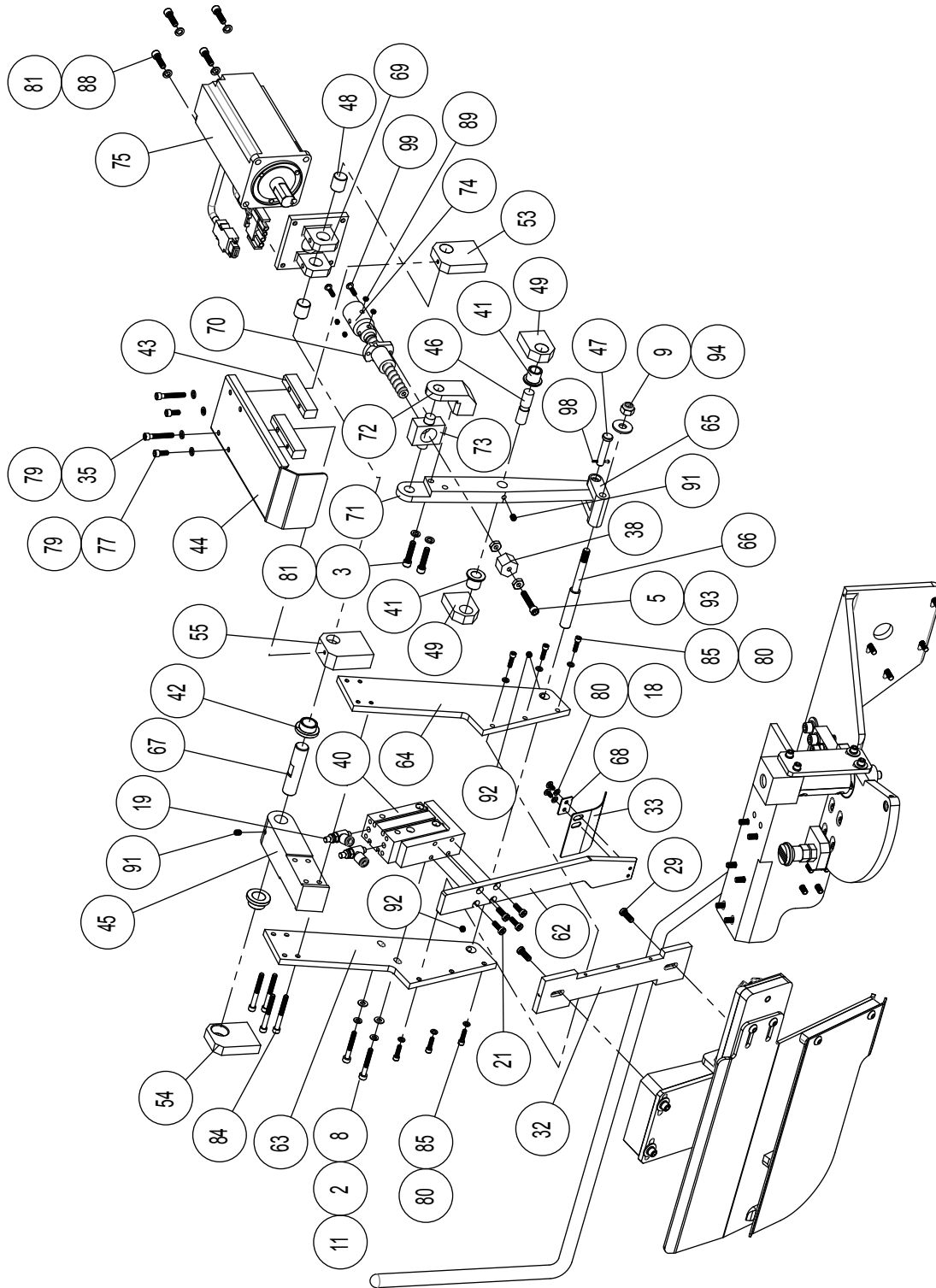
continued on next page ⇨

Item	Qty	Assy	Description	Part Number
71	1		LEVER, MOTOR DRIVE	6Z7208
72	1		BRACKET, YOKE	6Z7205
73	1		MOUNT, BALL NUT	6Z7204
74	1		COUPLING, SHAFT	6Z7203
75	1		MOTOR, SERVO MODIFIED	6Z7202
76	1		GIBRALTAR ST INDEXING PLUNGER 3/8-24	6Z7181
77	2		SHCS, #8-32 x 3/8	6Z3530
78	11		WASHER, LOCK, 1/4	6Z2832
79	8		WASHER, LOCK, #8	6Z2830
80	8		WASHER, LOCK, #6	6Z2829
81	24		WASHER, LOCK, #10	6Z2826
82	1		SHCS, #10-32 x 3/8	6Z2782
83	2		SHCS, #8-32 x 5/8	6Z2778
84	4		SHCS, #8-32 x 1-1/2	6Z2775
85	6		SHCS, #6-32 x 1/2	6Z2771
86	4		SHCS, #10-32 x 1/2	6Z2762
87	4		SHCS, #8-32 x 1/2	6Z2755
88	19		SHCS, #10-32 x 5/8	6Z2751
89	8		SHSS, #10-32 x 1/8, CUP POINT	6Z2750
90	5		SHCS, 1/4-20 x 5/8	6Z2682
91	2		SHSS, #10-32 x 1/4, CUP POINT	6Z2638
92	2		SHSS, #10-32 x 3/16, CUP POINT	6Z2476
93	2		NUT, HEX, #10-32	6Z1174
94	3		WASHER, FLAT, 1/4	6Z1000
95	2		WASHER, FLAT, #8	6Z0997
96	7		WASHER, FLAT, #10	6Z0994
97	2		FHCS, #6-32 x 3/8	6Z0991
98	1		PIN, COTTER, 1/16 x 1/2	6Z0674
99	2		BHCS, #6-32 x 1/2	6Z0487
100	6		BHCS, #10-32 x 3/8	6Z0473
101	1		1/2 ID x 3/4 OD SHIM 25135	400501
102	2		BOLT, SHOULDER, 1/4 x 1/8	6Z9636



Item	Qty	Assy	Description	Part Number
1	1		NUT, WING, #10-32	WN10-32X7/16
4	3		SHCS, #10-32 x 3/4	SHCS-10-32X3/4
13	1		KNOB, PLASTIC, #10 SHCS	94052A131
14	1		PLATE, FOLDER ADAPTER, GPT-1000AP ONLY	6ZA695
15	1		SPACER, FOLDER ADAPTER, GPT-1000AP ONLY	6ZA693
21	4		SHCS, M4 x 0.7 x 12MM, LOW HEAD	6ZA219
22	1		BRACKET, GUIDE ASSY MOUNT	6Z9635
23	1		BRACKET, GUIDE ASSY ADJUSTMENT	6Z9634
24	1		SPACER, LEFT, GUIDE, GPT-AP W/FAUX TAPE	6Z9627
25	1		SPACER, ADJUSTMENT, GUIDE, GPT-AP W/FAUX TAPE	6Z9626
26	1		SPACER, RIGHT, GUIDE GPT-AP W/FAUX TAPE	6Z9625
27	1		PLATE, TOP, GUIDE, GPT-AP W/FAUX TAPE	6Z9624
28	1		PLATE, BOTTOM, GUIDE, GPT-AP	6Z9623
75	1		MOTOR, SERVO MODIFIED	6Z7202
81	24		WASHER, LOCK, #10	6Z2826
82	1		SHCS, #10-32 x 3/8	6Z2782
88	19		SHCS, #10-32 x 5/8	6Z2751
96	7		WASHER, FLAT, #10	6Z0994
100	6		BHCS, #10-32 x 3/8	6Z0473
102	2		BOLT, SHOULDER, 1/4 x 1/8	6Z9636

NOTE: The parts list above is part of the complete list on pages 25, 26 and 27.



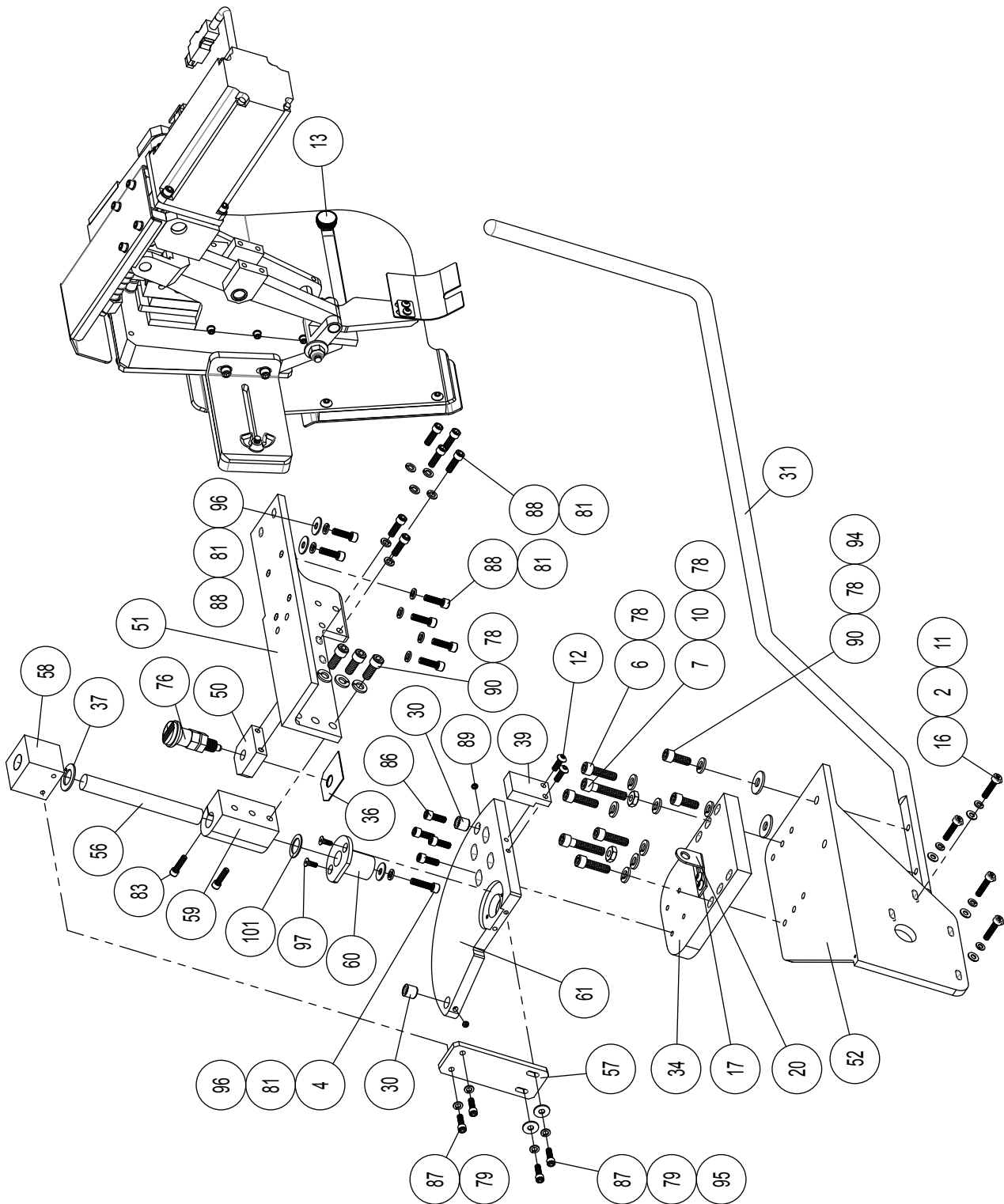
Item	Qty	Assy	Description	Part Number
2	6		WASHER, LOCK, M4	SLW-M4
3	2		SHCS, #10-32 x 7/8	SHCS10-32X7/8
5	1		SHCS, #10-32 x 1	SHCS10-32X1
8	2		SHCS, M4 x 0.7 x 30MM	SHCS-M4X30
9	1		NUT, NYLOCK, 1/4-20	LN1/4-20
11	6		WASHER, FLAT, M4	FW-M4
18	2		BHCS, #6-32 x 1/4	6Z0488
19	2		FLOW CONTROL, M5 x 0.8 TO 5/32 TUBE	4099017
29	2		SHCS, #10-32 x 1/2, LOW HEAD	6Z9534
32	1		BRACKET, LOWER LEVER	6Z7991
33	1		BLADE, RUFFLER, CONTINENTAL	6Z7986
35	2		SHCS, #8-32 x 1	6Z7868
38	1		SPACER, ADJ., LEAD SCREW	6Z7361
40	1		SLIDE, MODIFIED	6Z7255
41	2		FLANGE BEARING, 3/8 ID x 1/2 OD x 1/2 L	6Z7254
42	2		FLANGE BEARING, 1/2 ID x 5/8 OD x 3/8 L	6Z7253
43	2		SPACER, COVER RETAINER	6Z7246
44	1		COVER, LEAD SCREW	6Z7245
45	1		LEVER, FOLDER PIVOT	6Z7242
46	1		SHAFT, LEVER PIVOT	6Z7240
47	1		SHAFT, CLEVIS	6Z7239
48	2		SHAFT, TRUNION	6Z7238
49	2		BRACKET, LEVER PIVOT	6Z7237
53	1		BRACKET, MOTOR PIVOT	6Z7232
54	1		BRACKET, FOLDER PIVOT, LEFT	6Z7231
55	1		BRACKET, FOLDER PIVOT, MIDDLE	6Z7229
62	1		BRACKET, BLADE MOUNT	6Z7222
63	1		BRACKET, LEVER, LEFT	6Z7219
64	1		BRACKET, LEVER, RIGHT	6Z7218
65	1		LINK, PLEATER	6Z7216
66	1		SHAFT, CLEVIS	6Z7215
67	1		SHAFT, FOLDER PIVOT	6Z7214
68	1		RETAINER, BLADE	6Z7212
69	1		MOTOR MOUNT, TRUNION	6Z7211
70	1		LEAD SCREW W/NUT, GPT-1000	6Z7209

NOTE: The parts list above is part of the complete list on pages 25, 26 and 27.

continued on next page ⇨

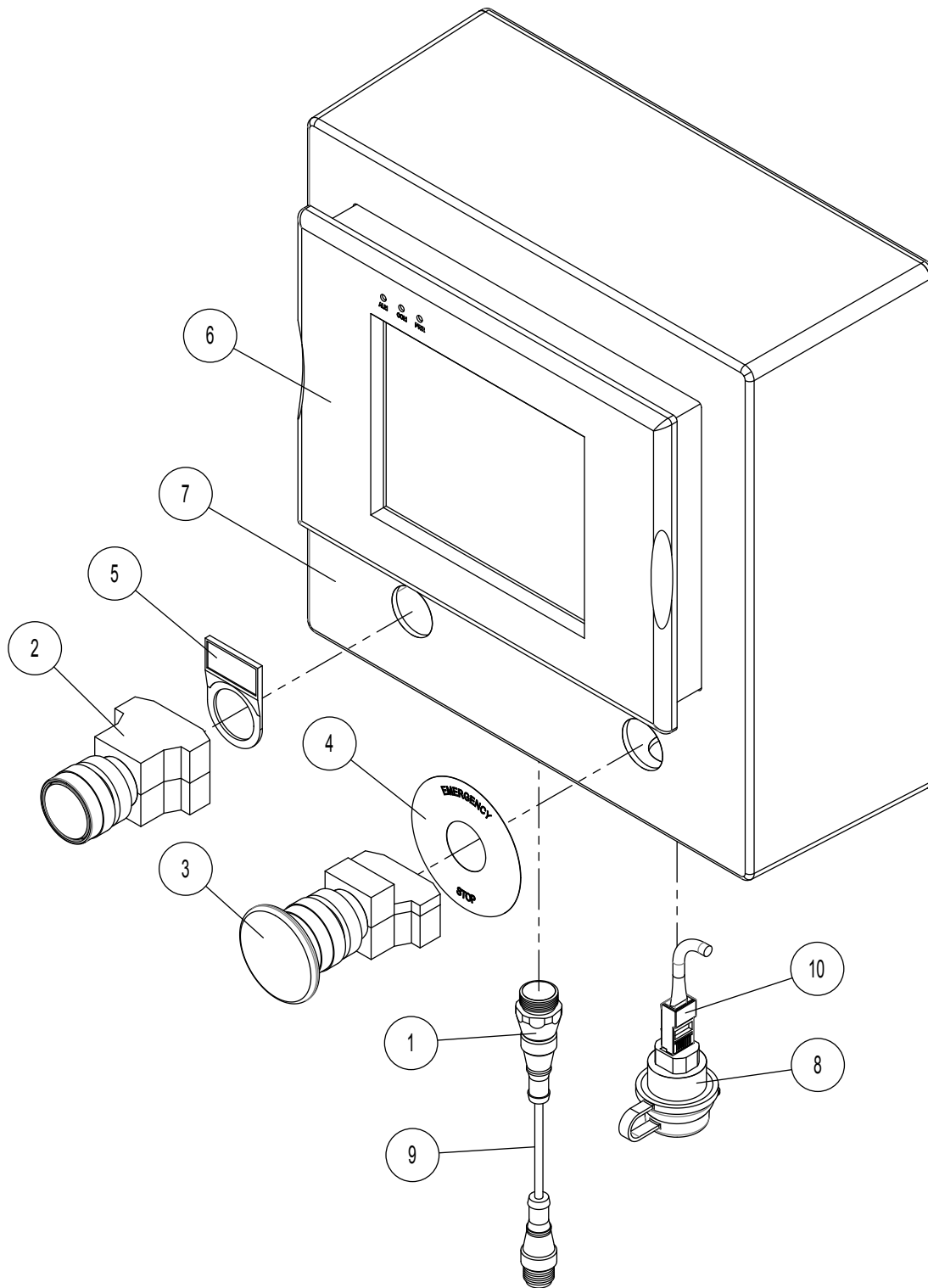
Item	Qty	Assy	Description	Part Number
71	1		LEVER, MOTOR DRIVE	6Z7208
72	1		BRACKET, YOKE	6Z7205
73	1		MOUNT, BALL NUT	6Z7204
74	1		COUPLING, SHAFT	6Z7203
77	2		SHCS, #8-32 x 3/8	6Z3530
79	8		WASHER, LOCK, #8	6Z2830
80	8		WASHER, LOCK, #6	6Z2829
84	4		SHCS, #8-32 x 1-1/2	6Z2775
85	6		SHCS, #6-32 x 1/2	6Z2771
89	8		SHSS, #10-32 x 1/8, CUP POINT	6Z2750
91	2		SHSS, #10-32 x 1/4, CUP POINT	6Z2638
92	2		SHSS, #10-32 x 3/16, CUP POINT	6Z2476
93	2		NUT, HEX, #10-32	6Z1174
94	3		WASHER, FLAT, 1/4	6Z1000
98	1		PIN, COTTER, 1/16 x 1/2	6Z0674
99	2		BHCS, #6-32 x 1/2	6Z0487

NOTE: The parts list above is part of the complete list on pages 25, 26 and 27.

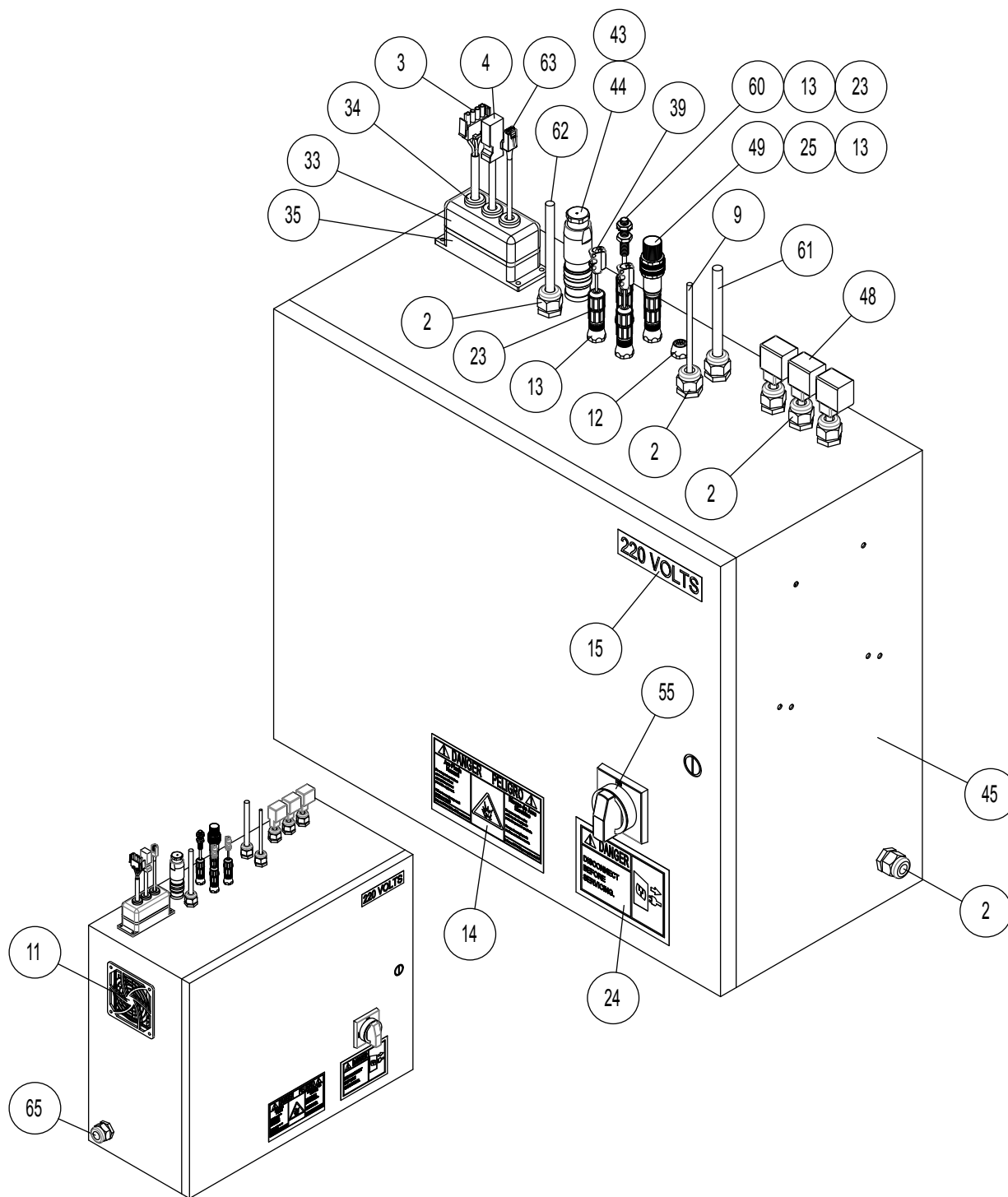


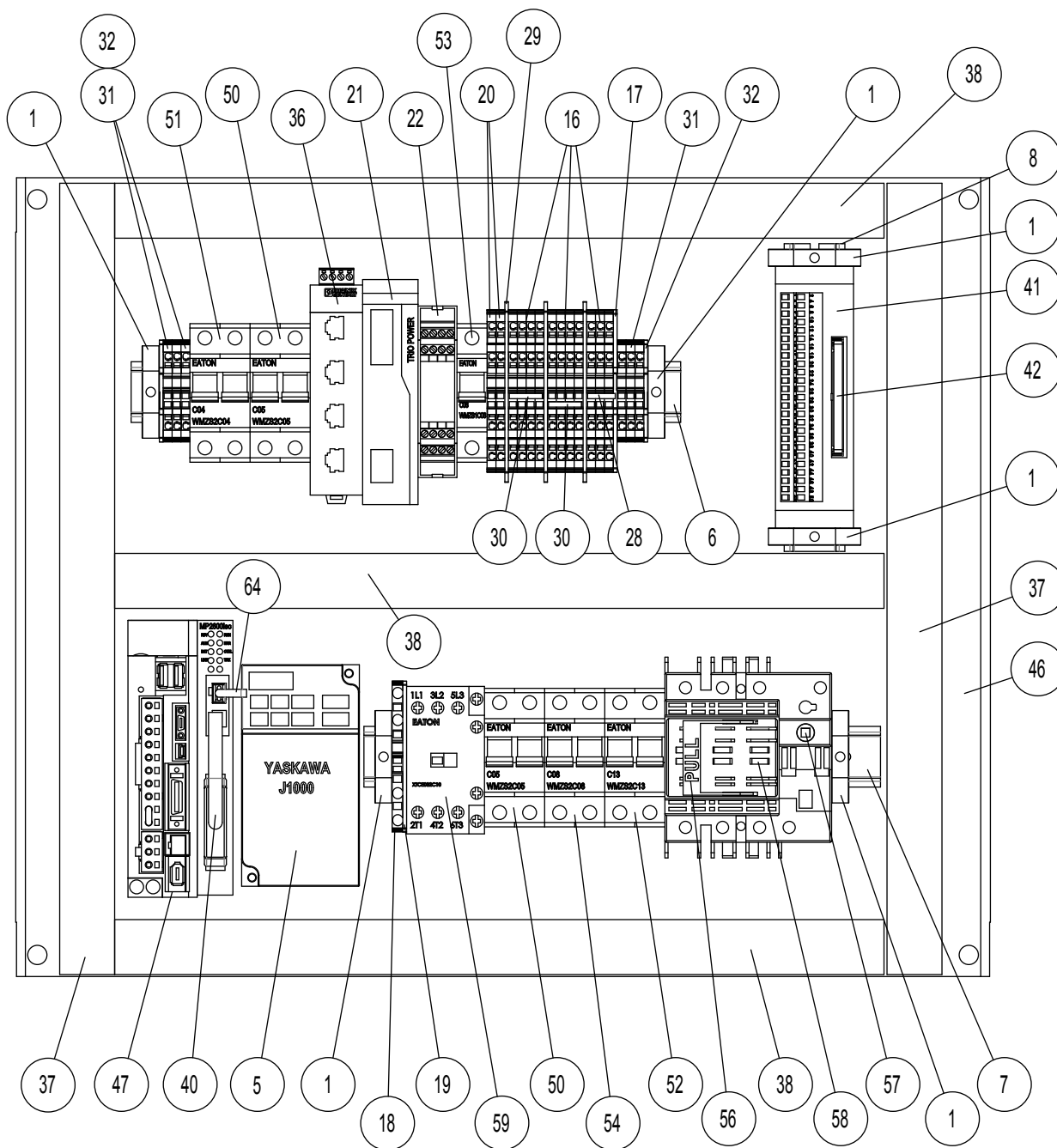
Item	Qty	Assy	Description	Part Number
2	6		WASHER, LOCK, M4	SLW-M4
4	3		SHCS, #10-32 x 3/4	SHCS-10-32X3/4
6	4		SHCS, 1/4-20 x 7/8	SHCS1/4-20X7/8
7	2		SHCS, 1/4-20 x 1-1/4	SHCS1/4-20X1-1/4
10	2		NUT, JAM, 1/4-20	JN1/4-20
11	6		WASHER, FLAT, M4	FW-M4
12	2		BHCS, #8-32 x 1/2	BHCS8-32X1/2
17	2		BHCS, #8-32 x 3/8	6Z0489
20	1		SUPPORT, SENSOR	801250
30	2		DRILL BUSHING, MODIFIED	6Z9257
31	1		BRACKET, MATERIAL HANGING	6Z8969
34	1		BRACKET, RUFFLER	6Z7922
36	1		SPACER, PLUNGER MOUNT, ASSY	6Z7436
37	1		THRUST WASHER	6Z7435
39	1		STOPPER, RUFFLER ARM	6Z7309
50	1		PLATE, PLUNGER MOUNT	6Z7236
51	1		BRACKET, RUFFLER MOUNT	6Z7235
52	1		BRACKET, MAIN, RUFFLER	6Z7233
56	1		SHAFT, HINGE	6Z7228
57	1		PLATE, HINGE RETAINER	6Z7227
58	1		HINGE, TOP	6Z7226
59	1		HINGE, MIDDLE	6Z7225
60	1		HINGE, LOWER	6Z7224
61	1		PLATE, LOWER HINGE MOUNT	6Z7223
76	1		GIBALTAR ST INDEXING PLUNGER 3/8-24	6Z7181
78	11		WASHER, LOCK, 1/4	6Z2832
83	2		SHCS, #8-32 x 5/8	6Z2778
85	6		SHCS, #6-32 x 1/2	6Z2771
86	4		SHCS, #10-32 x 1/2	6Z2762
87	4		SHCS, #8-32 x 1/2	6Z2755
90	5		SHCS, 1/4-20 x 5/8	6Z2682
95	2		WASHER, FLAT, #8	6Z0997
97	2		FHCS, #6-32 x 3/8	6Z0991
101	1		1/2 ID x 3/4 OD SHIM	400501

NOTE: The parts list above is part of the complete list on pages 25, 26 and 27.



Item	Qty	Assy	Description	Part Number
1	1		SOCKET, 10 PIN, FEMALE	6ZA529
2	1		MOMENTARY PUSH BUTTON, GREEN ILL	6ZA579
3	1		MOMENTARY PUSH BUTTON, RED, MUSHROOM	6ZA580
4	1		PUSH BUTTOM LEGEND, E-STOP	6ZA584
5	1		HW NAMEPLATE & INSERT	6ZB234
6	1		TOUCH SCREEN, 5.6 TFT	6ZC635
7	1		INTERFACE ENCLOSURE MOD.	6ZC937
8	1		RJ45 SOCKET, 22MM	6ZC960
9	1		CORD, EUROFAST, 10 PIN	6ZC961
10	1		RJ45 ETHERNET CABLE, 1 FT	6ZC979



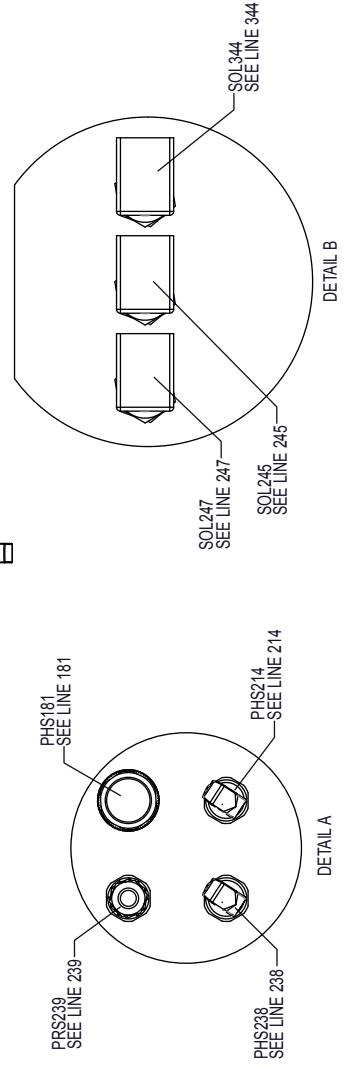
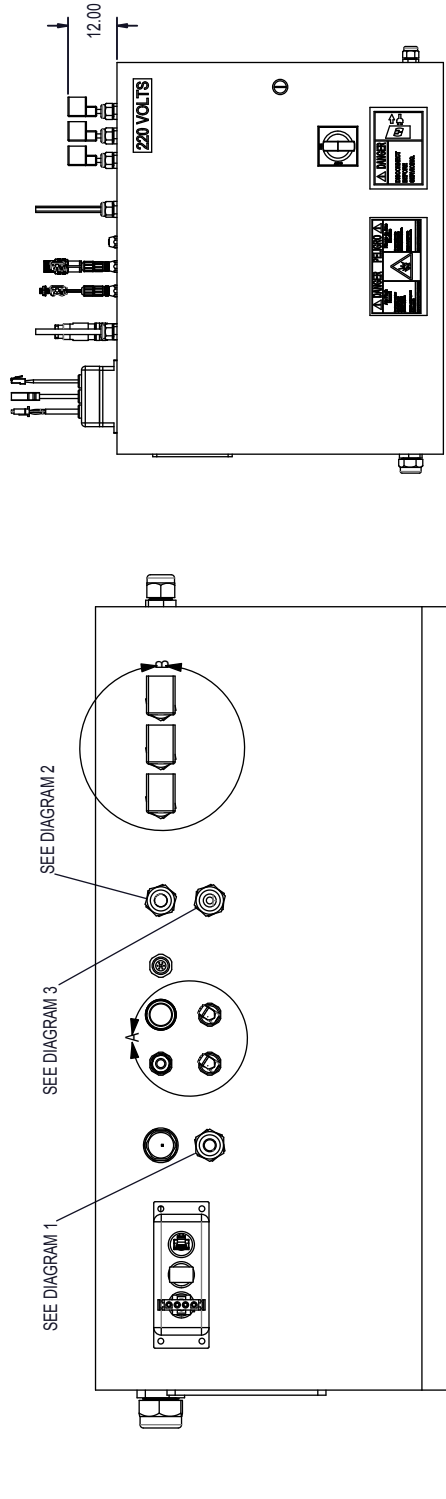
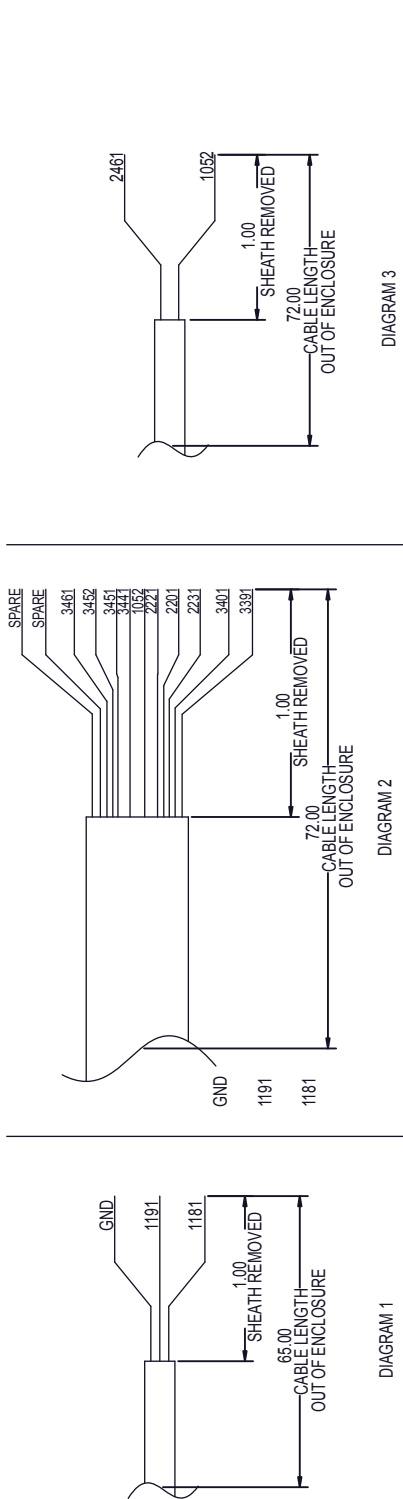


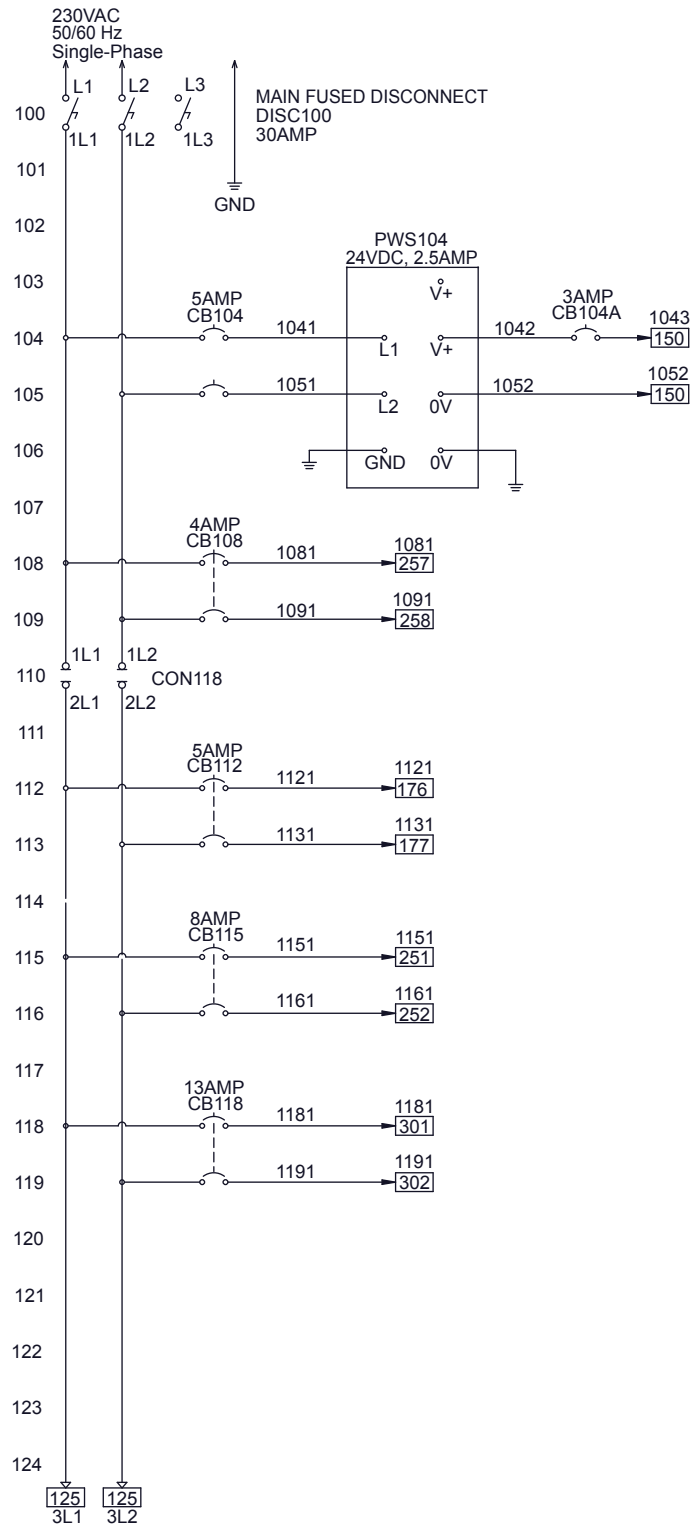
Item	Qty	Assy	Description	Part Number
1	6		END STOP	103-002-26
2	7		STRAIN RELIEF, PG11 x .23-.395 CBL.	3213
3	1		SERVO POWER CABLE, 3 METER	6Z5280
4	1		SERVO ENCODER CABLE, 3 METER	6Z5281
5	1		MOTOR CONTROLLER, J1000	6Z7333
6	1		DIN MOUNTING RAIL, 12.75 INCHES	6Z8965
7	1		DIN MOUNTING RAIL, 11.75 INCHES	6Z8965
8	1		DIN MOUNTING RAIL, 7.00 INCHES	6Z8965
9	1		WIRE, 2-COND, 20 GA.	6ZA355
*10	1		LOCK NUT, PG13.5	6ZA517
11	1		FAN FILTER KIT	6ZA523
12	1		SOCKET, 10 PIN, FEMALE	6ZA529
13	4		SOCKET, 4 PIN, FEMALE	6ZA531
14	1		ARC FLASH HAZARD LABEL	6ZA533
15	1		220 VOLTS LABEL	6ZA534
16	11		TERMINAL BLOCK	6ZA540
17	1		TERMINAL BLOCK END COVER	6ZA541
18	1		GROUNDING TERMINAL BLOCK	6ZA543
19	1		TERMINAL BLOCK END COVER	6ZA544
20	2		GROUNDING TERMINAL BLOCK	6ZA545
21	1		POWER SUPPLY, 24V	6ZA561
22	1		SAFTEY RELAY	6ZA562
23	2		CONNECTOR, 4 PIN, MALE	6ZA574
24	1		DANGER-DISCONNECT BEFORE SERVICING LABEL	6ZA613
25	2		CONNECTOR, 4 PIN, MALE, SPEEDCON	6ZB081
26	3		WIRE DUCT, 1 x 2 (3 PCS 15.7" - 2 PCS 16.83")	6ZB100
27	2		WIRING DUCT, 1 x 2, 18 .00 INCHES	6ZB100
28	1		TERMINAL JUMPER, 3 POLE	6ZB105
29	3		PARTITION PLATE	6ZB109
30	2		TERMINAL JUMPER, 4 POLE	6ZB110
31	6		TERMINAL BLOCK	6ZB111
32	2		TERMINAL BLOCK END COVER	6ZB112
33	1		CABLE FEED THROUGH, 3 HOLE	6ZB320
34	3		CABLE FEED THROUGH GLAND, 6-7MM	6ZB321
35	1		PANEL MOUNT BASE	6ZB322

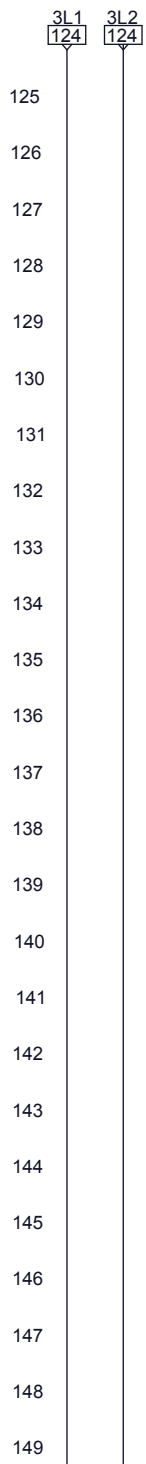
*Item 10 not shown.

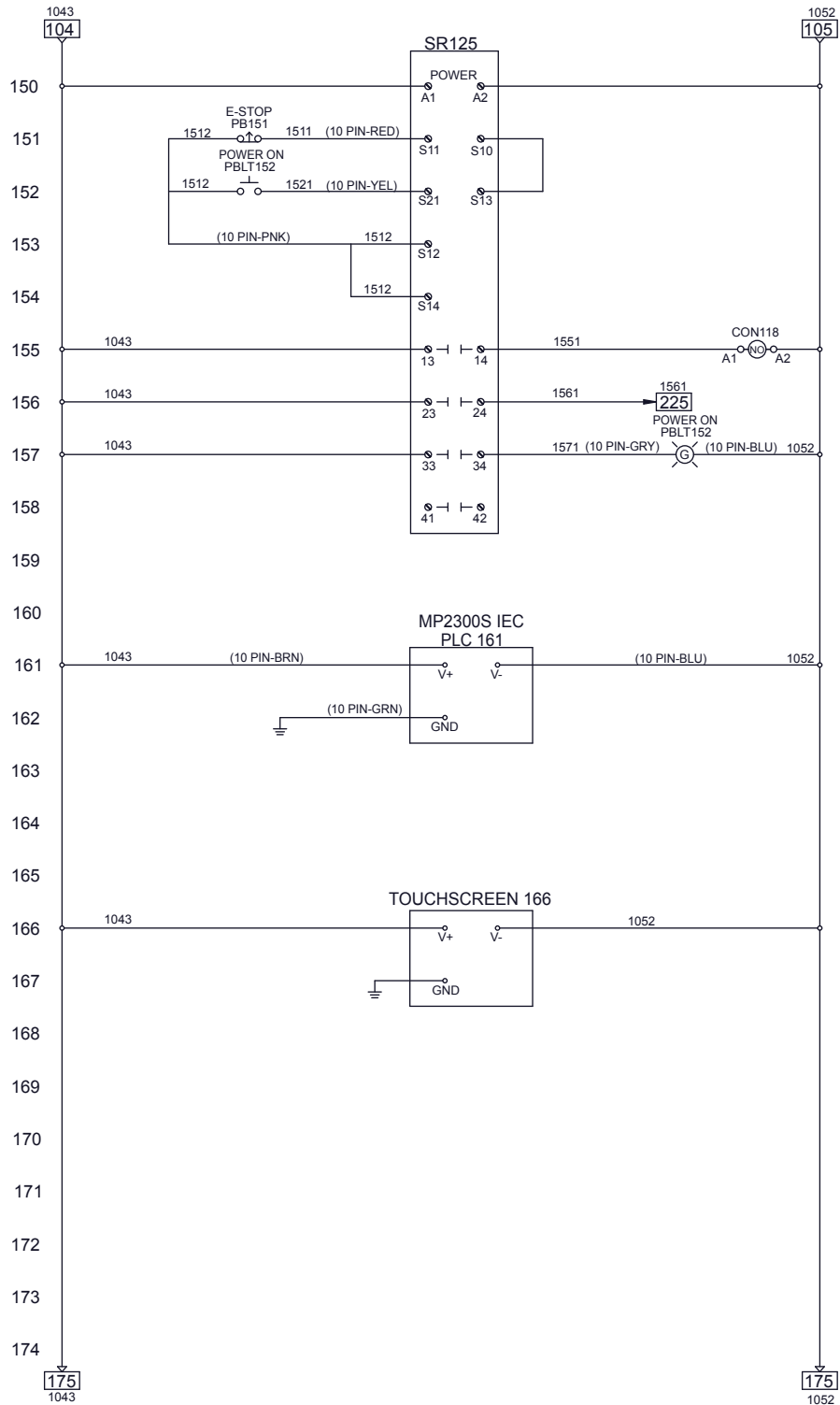
continued on next page ⇨

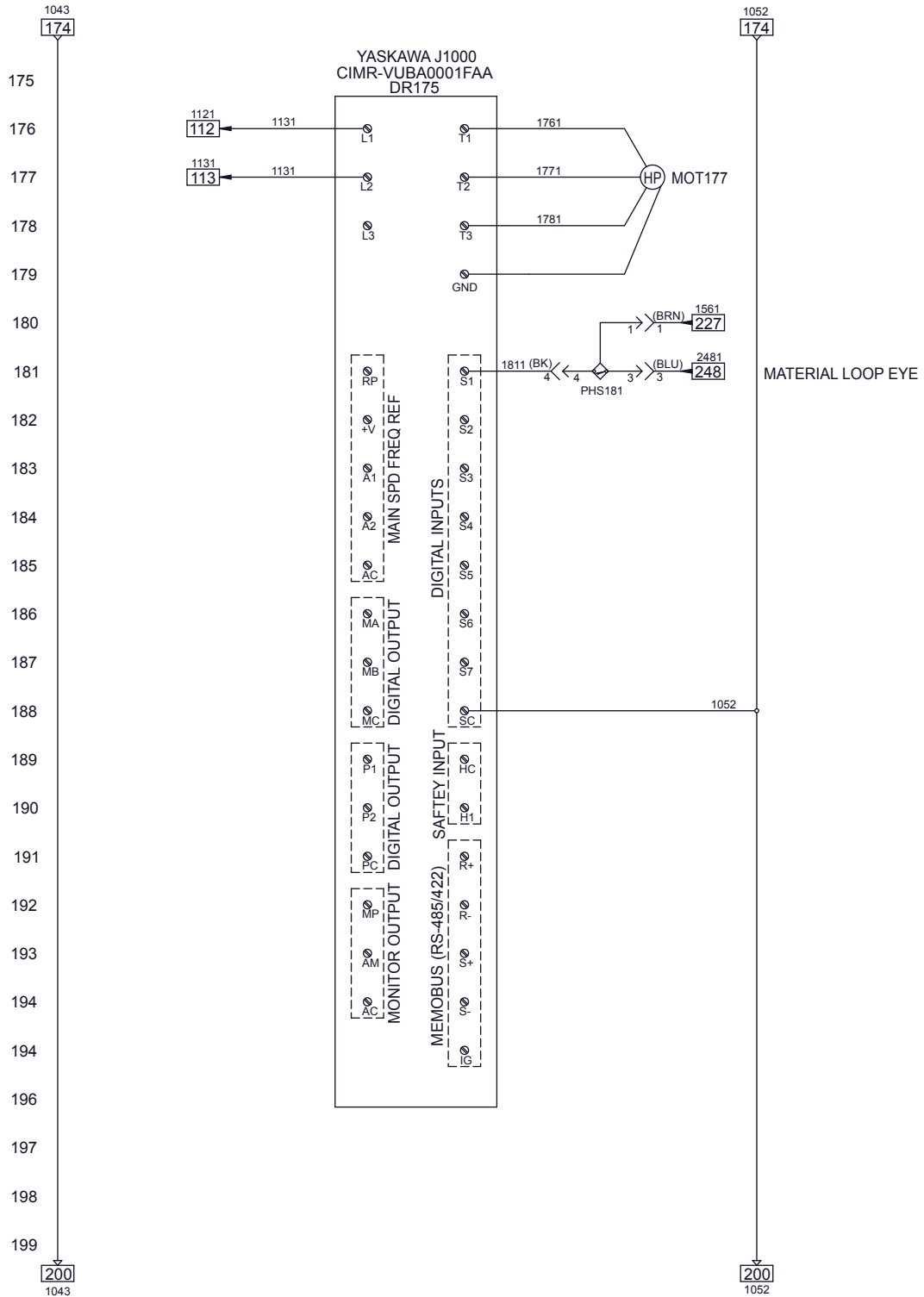
Item	Qty	Assy	Description	Part Number
36	1		ETHERNET SWITCH, 5 TP RJ45 PORTS	6ZB987
37	2		WIRE DUCT COVER, 18.00 INCHES	6ZC538
38	3		WIRE DUCT COVER, 17.00 INCHES	6ZC538
39	2		MINI PHOTO EYE, 24VDC, NPN	6ZC588
40	1		IO CONNECTOR CABLE	6ZC591
41	1		TERMINAL MODULE, 50 PIN, RIBBON CBL, SPRG CAGE	6ZC625
42	1		50 PIN RIBBON CABLE CONNECTOR	6ZC627
43	1		SOCKET, 4 PIN, FEMALE	6ZC632
44	1		CONNECTOR, 4 PIN, MALE	6ZC633
45	1		ENCLOSURE MOD.	6ZC637
46	1		SUB-PANEL MOD.	6ZC638
47	1		S5 AMP & 2600 IEC CONTROLER	6ZC643
48	3		DIN CONNECTOR CORD SET	6ZC717
49	1		PHOTO SENSOR	6ZC964
50	2		CIRCUIT BREAKER, 2P, 5A	6ZC965
51	1		CIRCUIT BREAKER, 2P, 4A	6ZC966
52	1		CIRCUIT BREAKER, 2P, 13A	6ZC967
53	1		CIRCUIT BREAKER, 1P, 3A	6ZC968
54	1		CIRCUIT BREAKER, 2P, 8A	6ZC969
55	1		DISCONNECT HANDLE TYPE M	6ZC970
56	1		DISCONNECT SWITCH, FUSED, 30A	6ZC971
57	1		DISCONNECT SHAFT, 300MM	6ZC972
58	3		FUSE, CC, 30A	6ZC973
59	1		CONTACTOR, FRAME C, 32A, 24VDC	6ZC974
60	1		PROX, 8MM, NPN	6ZC975
61	1		WIRE, 12-COND, 20 GA.	6ZC976
62	1		WIRE, 3-COND, 14 GA.	6ZC977
63	1		RJ45 ETHERNET CABLE, 12 FT	6ZC978
64	1		RJ45 ETHERNET CABLE, 1 FT	6ZC979
65	1		STRAIN RELIEF, PG21, WITH NUT	J521001194

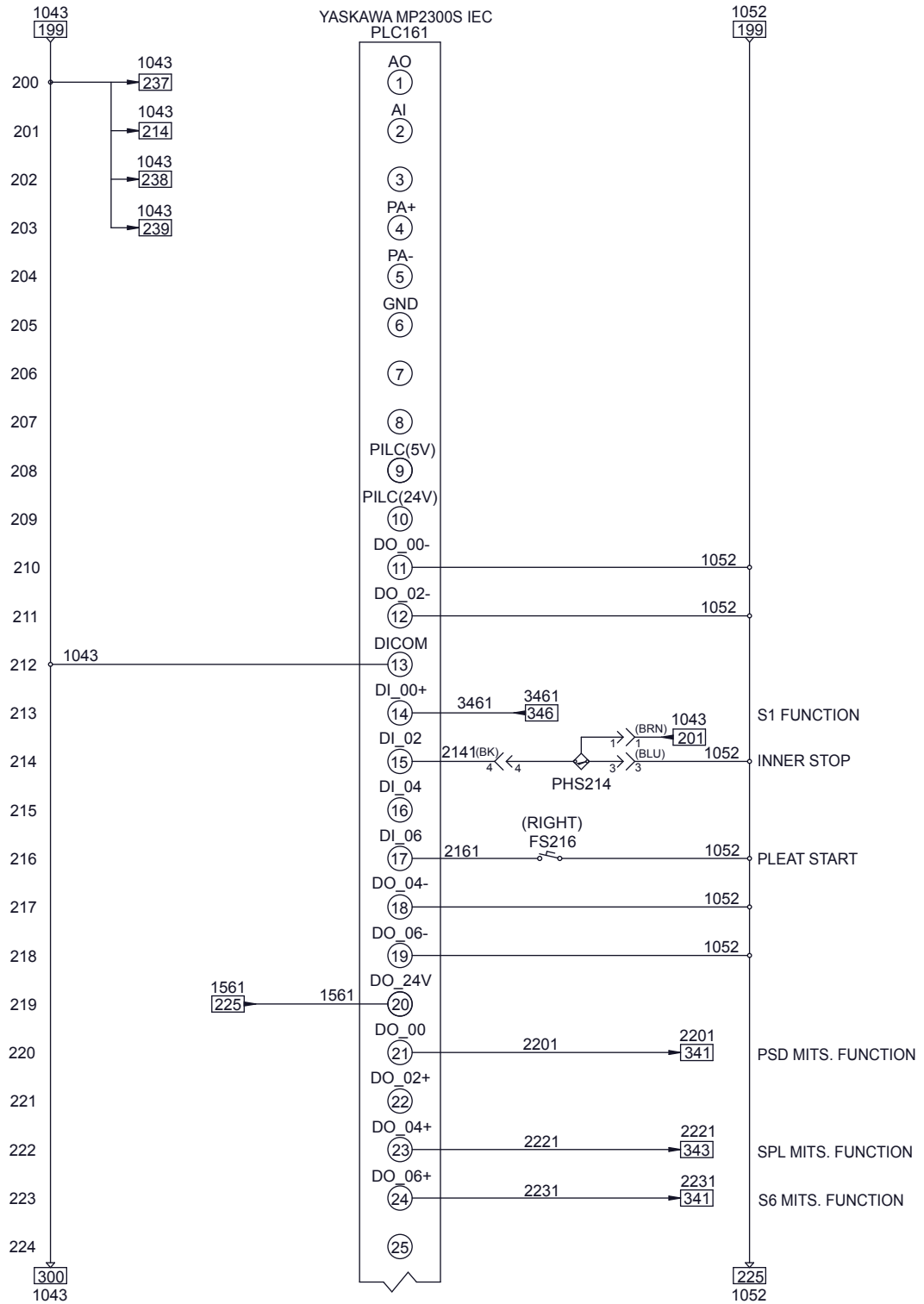


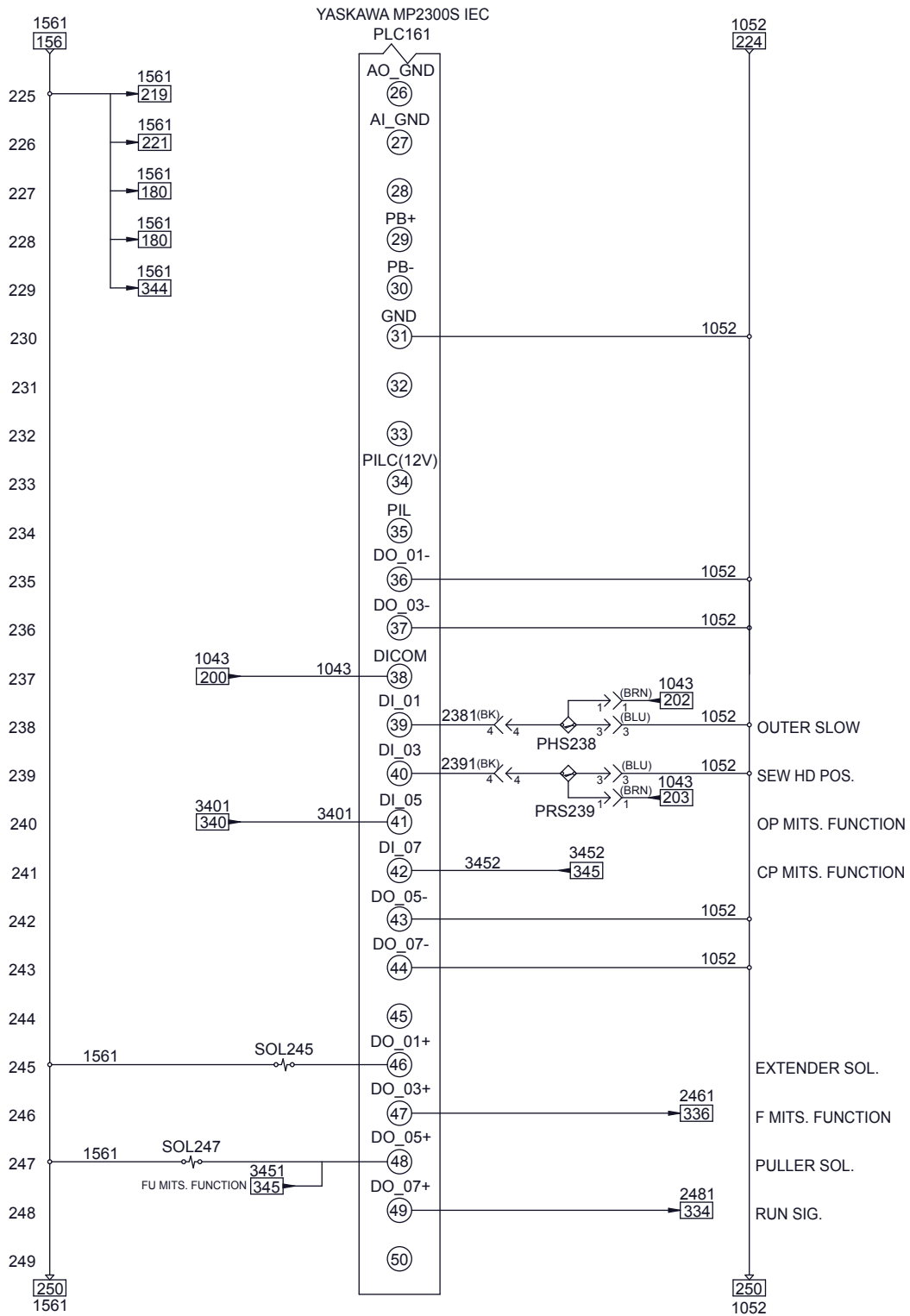


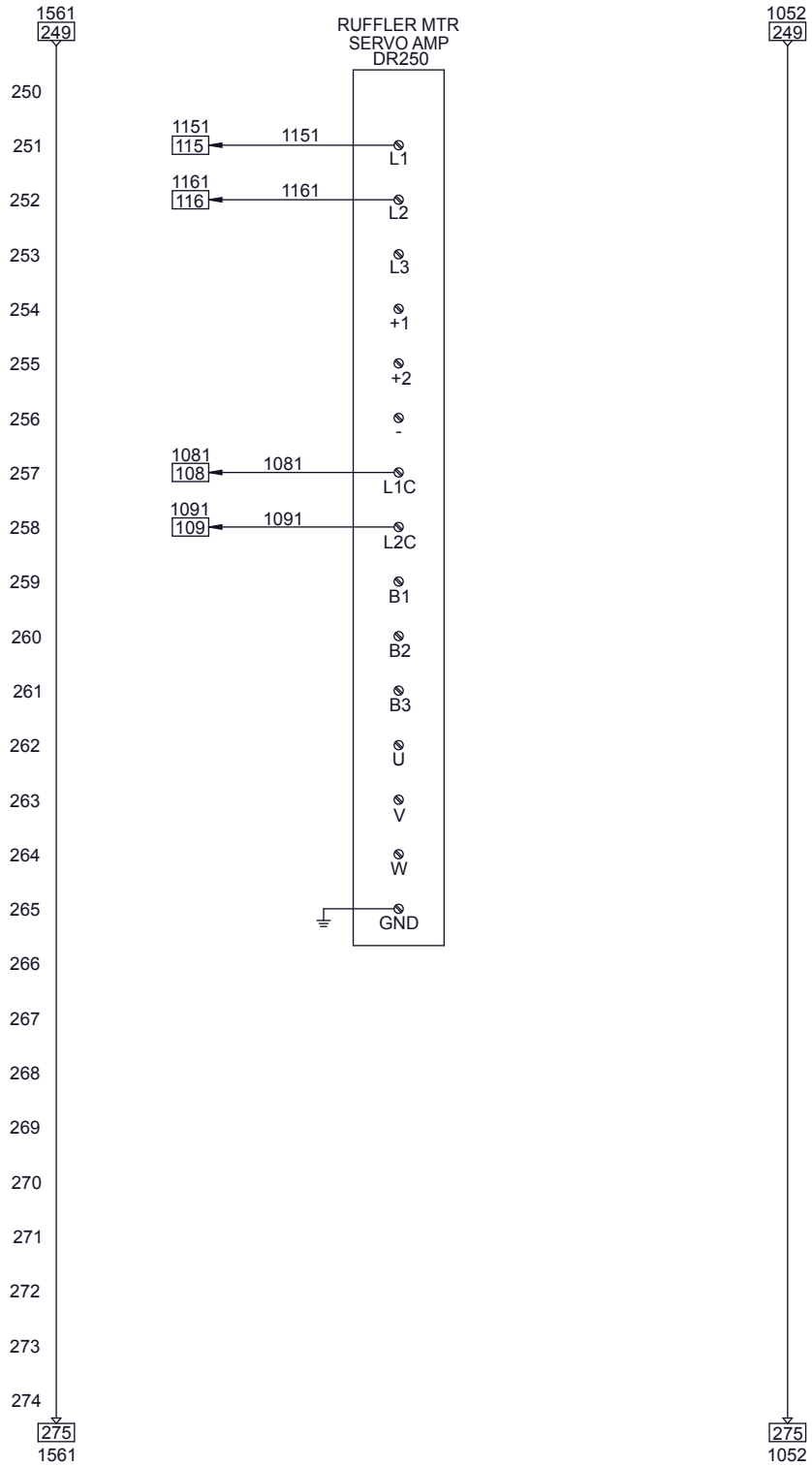


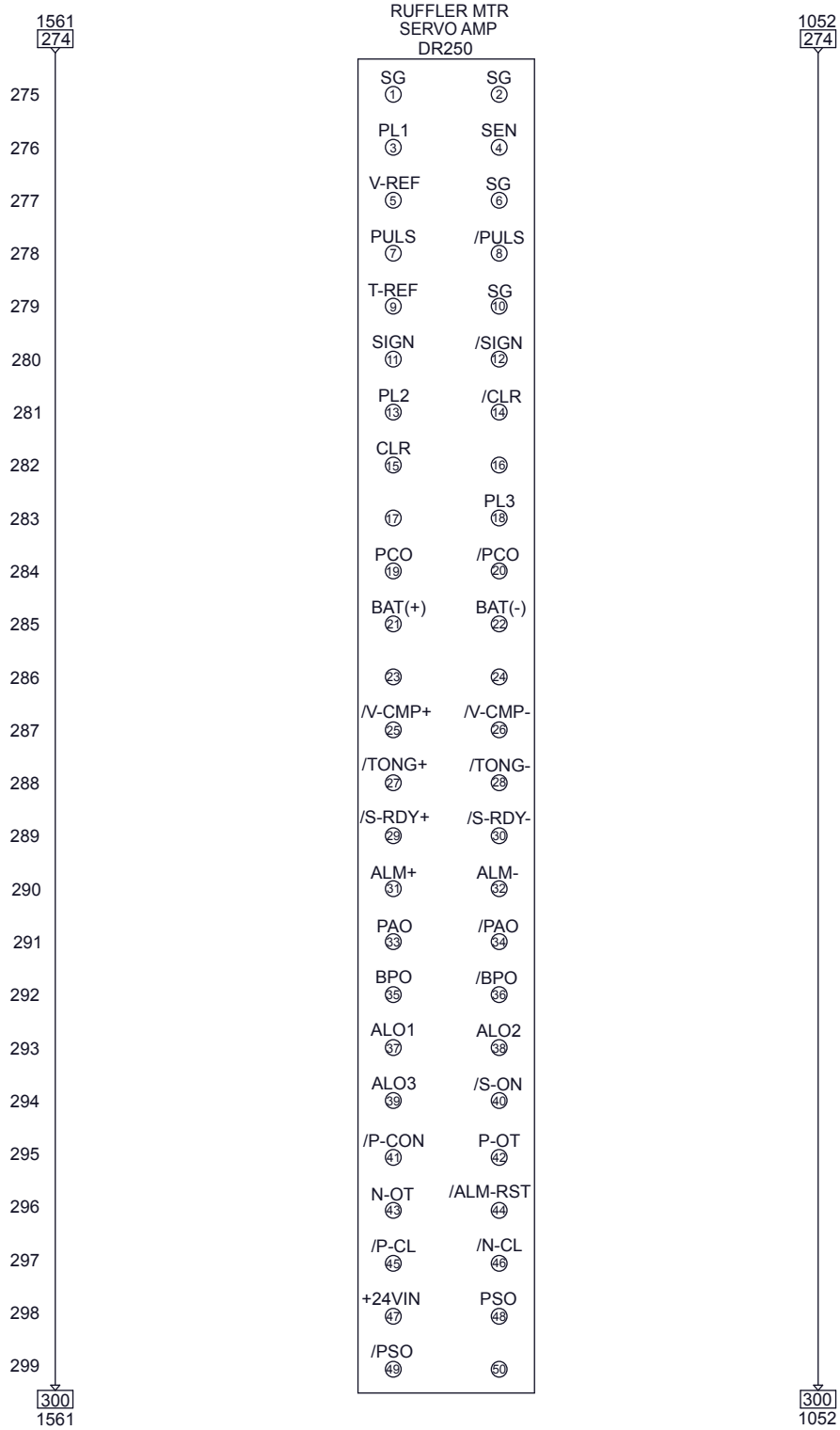


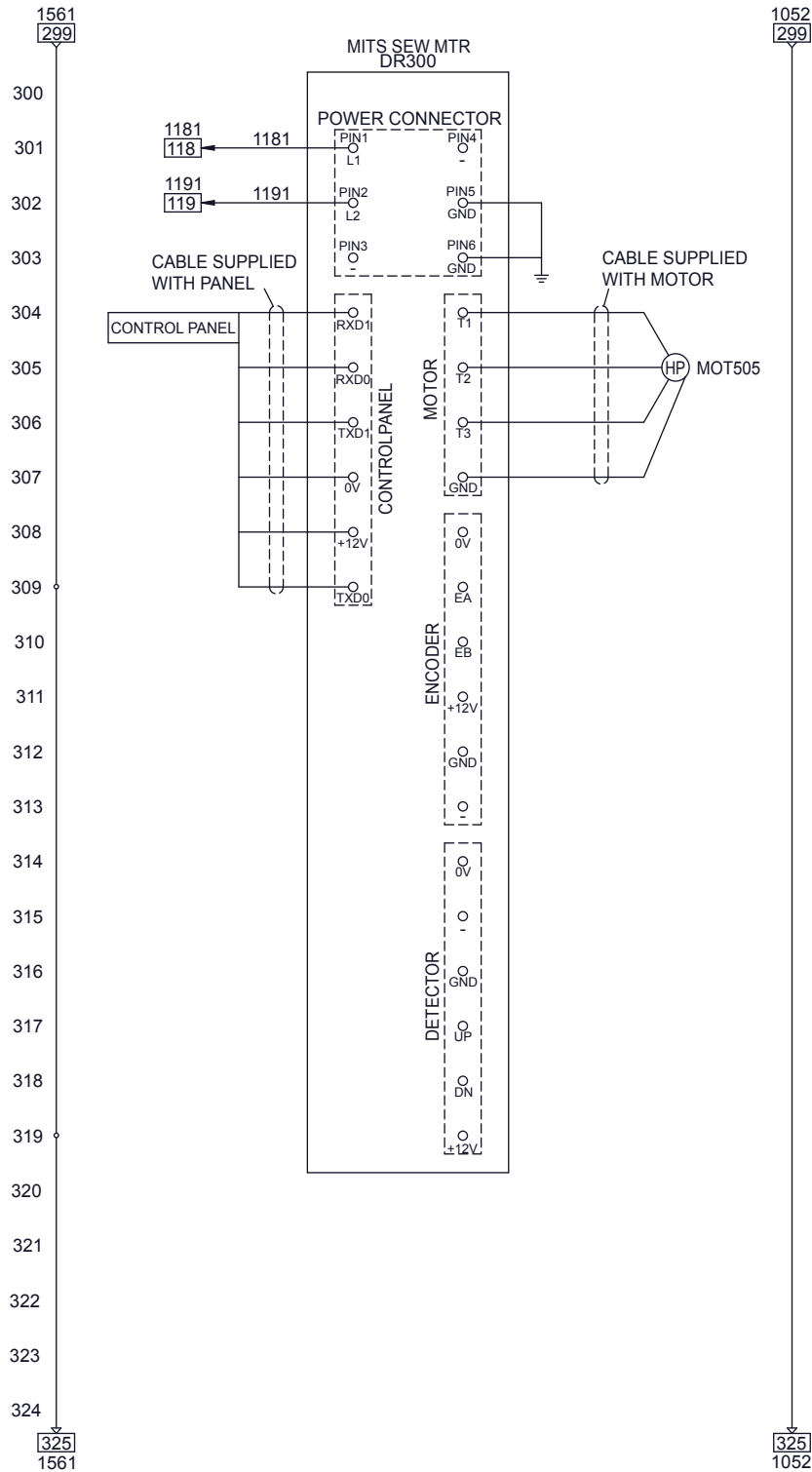


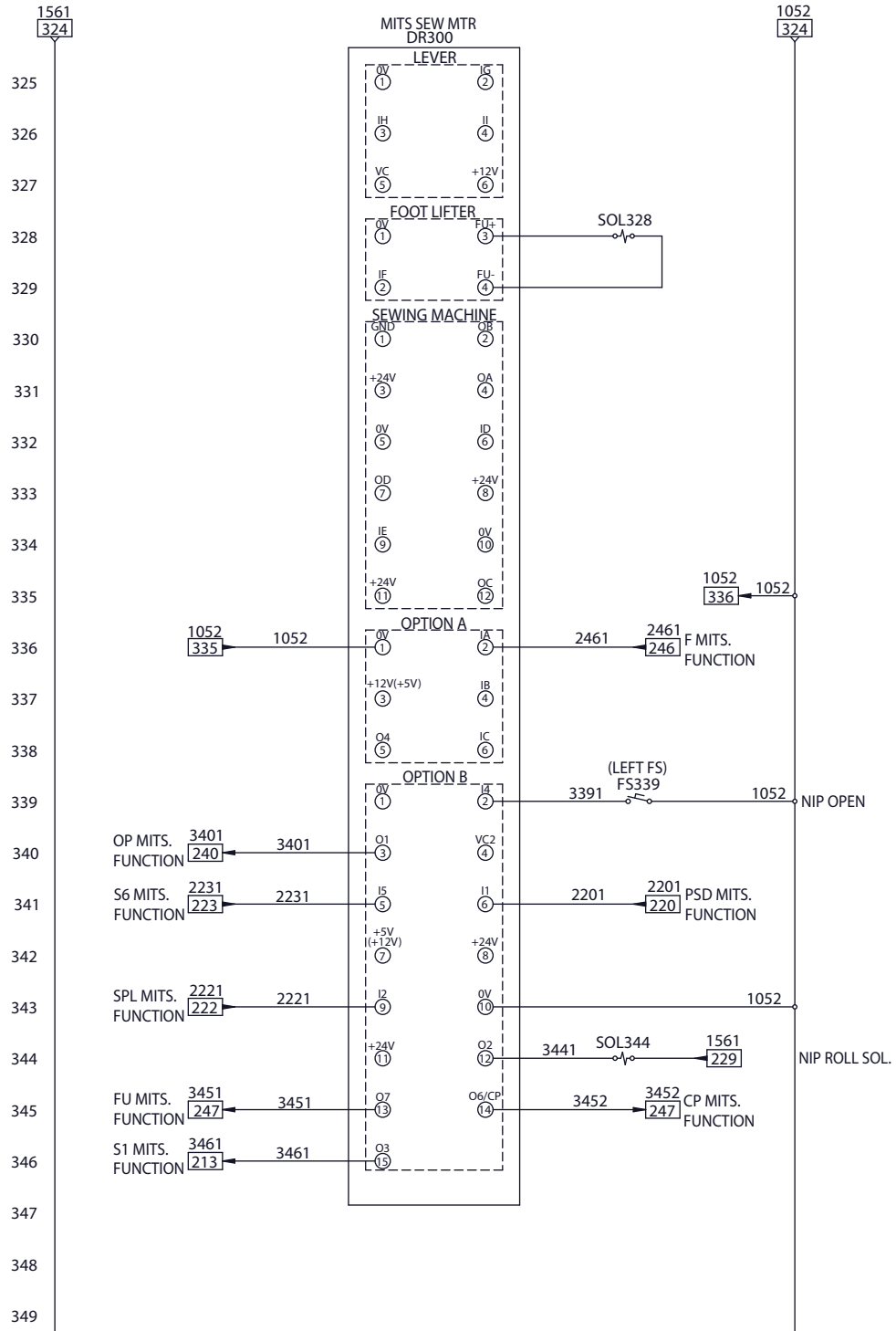


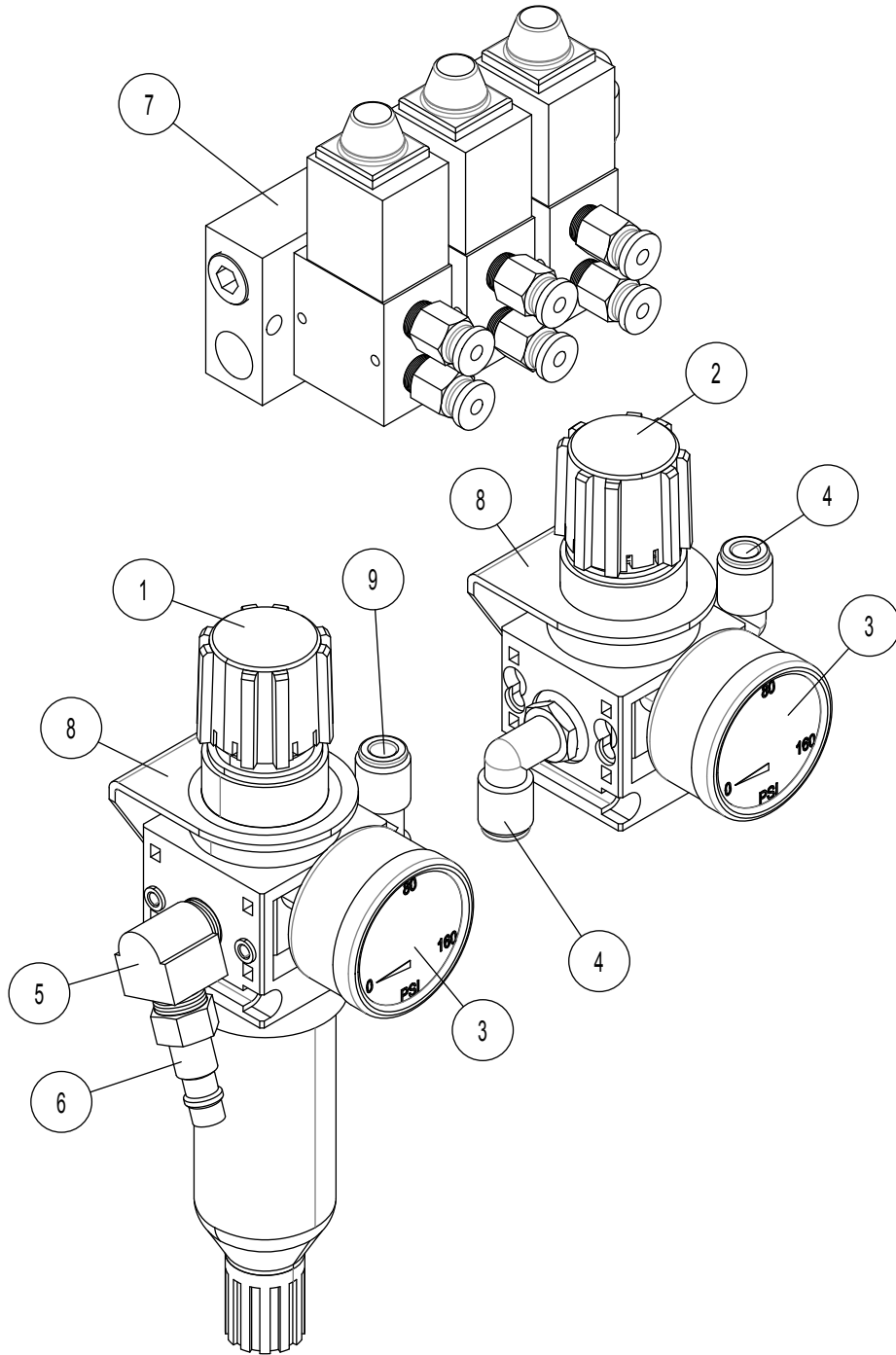




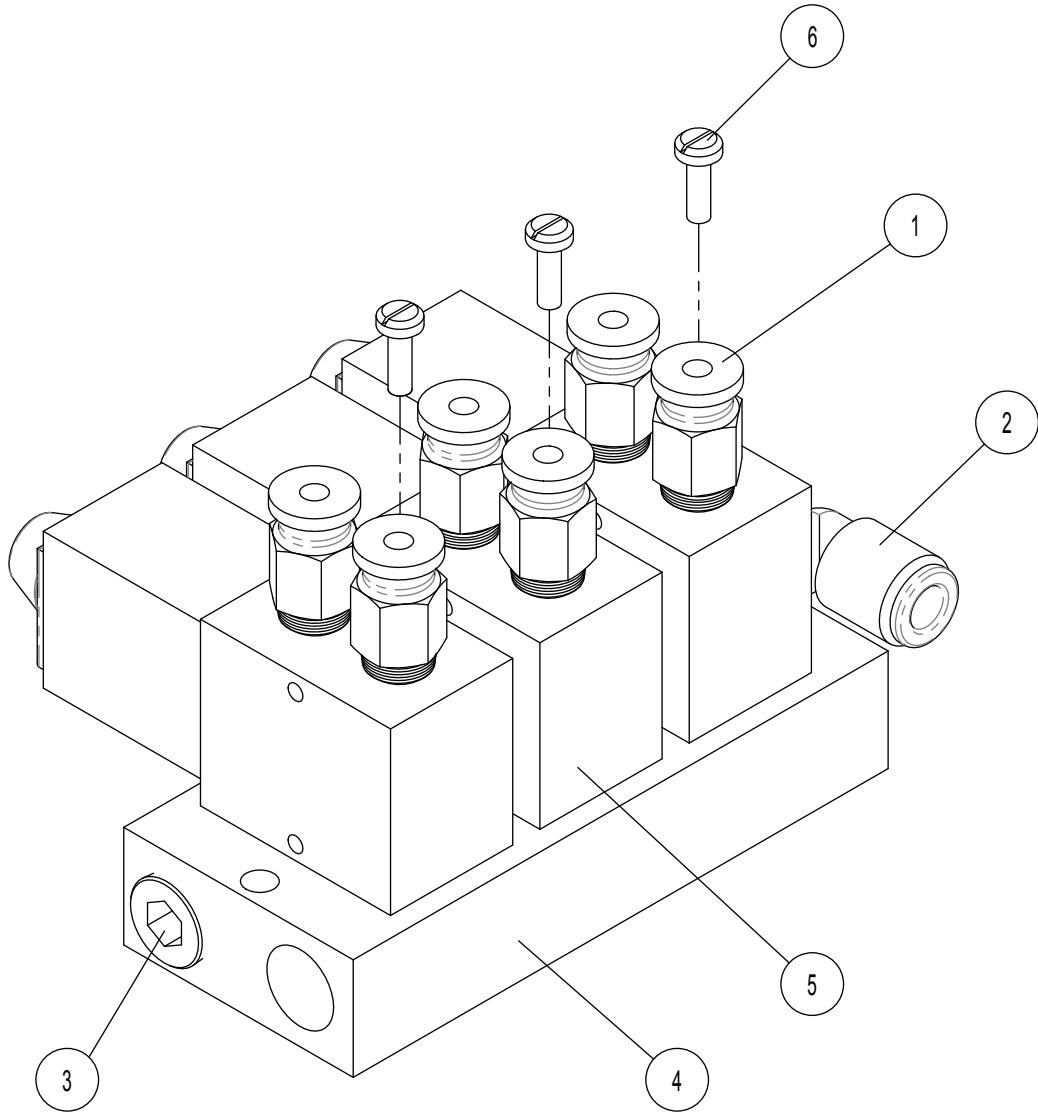








Item	Qty	Assy	Description	Part Number
1	1		14 SERIES FILTER REGULATOR, 1/4 PORTS	6ZC362
2	1		14 SERIES REGULATOR, 1/4 PORTS	-
3	2		0-160 PSI GAUGE	6Z3560
4	2		1/4 TUBE TO 1/4 NPT ELBOW	KQL07-35S
5	1		1/4 NPT STREET ELBOW	J5P30823
6	1		1/4 MALE PLUG, 1/4 NPT THREAD	6Z1556
7	1	S	VALVE STATION, LO1, 3 STATION, WITH FITTINGS	-
8	2		REGULATOR BRACKET, WITH RING	6ZC805
9	1		1/4 NPT TO 1/4 TUBE BRANCH TEE	6ZB848



Item 7 Valve Station Detail - 6ZC687**Pneumatic Kit**

Item	Qty	Assy	Description	Part Number
1	6		5/32 TUBE TO 1/8 NPT STRAIGHT UNION	6Z3532
2	1		1/4 TUBE TO 1/4 NPT ELBOW	KQL07-35S
3	1		1/4 NPT HEX PLUG	-
4	1		VALVE MANIFOLD, 3 STATION	-
5	3		SOLENOID VALVE, DIN STYLE	-
6	3		VALVE MOUNTING KIT	-

- 55

6Y1201.....	9, 10	6Z3532.....	57
6Y1202.....	11	6Z3560.....	55
6Y1232.....	8	6Z5273.....	11
6Y1296.....	8, 10	6Z5280.....	40
6Y1343.....	8, 10	6Z5281.....	40
6Y1401.....	8	6Z5634.....	15
6Z0473.....	17, 27, 29	6Z5823.....	13
6Z0480.....	20	6Z6424.....	19
6Z0484.....	23	6Z6435.....	19
6Z0485.....	20	6Z6439.....	19
6Z0487.....	27, 32	6Z6440.....	19
6Z0488.....	19, 25, 31	6Z6441.....	19
6Z0489.....	20, 25, 35	6Z6442.....	19
6Z0674.....	15, 27, 32	6Z6443.....	19
6Z0985.....	17	6Z6444.....	19
6Z0989.....	23	6Z6445.....	19
6Z0991.....	19, 27, 35	6Z6446.....	19
6Z0994.....	13, 15, 27, 29	6Z6447.....	19
6Z0997.....	27, 35	6Z6448.....	19
6Z1000.....	19, 27, 32	6Z6449.....	19
6Z1002.....	13	6Z6450.....	19
6Z1173.....	15	6Z6451.....	19
6Z1174.....	27, 32	6Z6452.....	19
6Z1176.....	11, 13	6Z6453.....	20
6Z1556.....	55	6Z6454.....	20
6Z1570.....	19	6Z6455.....	20
6Z2476.....	27, 32	6Z6456.....	20
6Z2638.....	27, 32	6Z6457.....	19
6Z2682.....	19, 27, 35	6Z6460.....	19
6Z2750.....	19, 27, 32	6Z6461.....	19
6Z2751.....	27, 29	6Z6462.....	19
6Z2755.....	19, 27, 35	6Z6465.....	20
6Z2762.....	15, 17, 19, 27, 35	6Z6466.....	20
6Z2771.....	27, 32, 35	6Z6468.....	19
6Z2775.....	27, 32	6Z6469.....	19
6Z2778.....	17, 27, 35	6Z6533.....	19
6Z2782.....	27, 29	6Z6904.....	11
6Z2826.....	15, 27, 29	6Z7127.....	15
6Z2829.....	19, 27, 32	6Z7152.....	9
6Z2830.....	13, 27, 32	6Z7181.....	23, 27, 35
6Z2832.....	19, 27, 35	6Z7186.....	20
6Z2833.....	11, 13, 17, 19	6Z7202.....	27, 29
6Z2991.....	9	6Z7203.....	27, 32
6Z3227.....	13	6Z7204.....	27, 32
6Z3483.....	13	6Z7205.....	27, 32
6Z3530.....	27, 32	6Z7208.....	27, 32
		6Z7209.....	26, 31
		6Z7211.....	26, 31
		6Z7212.....	26, 31
		6Z7214.....	26, 31
		6Z7215.....	26, 31

Part Number Index

6Z7216	26, 31	6Z7498	13
6Z7218	26, 31	6Z7680	13
6Z7219	26, 31	6Z7868	13, 25, 31
6Z7220	9, 12	6Z7922	25, 35
6Z7222	26, 31	6Z7952	11
6Z7223	26, 35	6Z7953	11
6Z7224	26, 35	6Z7954	9, 16
6Z7225	26, 35	6Z7955	17
6Z7226	26, 35	6Z7956	17
6Z7227	26, 35	6Z7958	17
6Z7228	26, 35	6Z7959	20
6Z7229	26, 31	6Z7960	20
6Z7230	13	6Z7961	9, 22
6Z7231	26, 31	6Z7962	23
6Z7232	26, 31	6Z7963	23
6Z7233	26, 35	6Z7965	20
6Z7235	26, 35	6Z7966	20
6Z7236	26, 35	6Z7986	25, 31
6Z7237	26, 31	6Z7990	9, 24, 26, 28, 30, 32, 34
6Z7238	26, 31	6Z7991	25, 31
6Z7239	26, 31	6Z7994	11
6Z7240	26, 31	6Z7996	11
6Z7241	11	6Z7999	17
6Z7242	26, 31	6Z8295	17
6Z7245	26, 31	6Z8297	17
6Z7246	26, 31	6Z8298	17
6Z7253	26, 31	6Z8380	17
6Z7254	26, 31	6Z8385	9
6Z7255	26, 31	6Z8512	17
6Z7270	13	6Z8610	17, 20
6Z7302	15	6Z8611	17, 20
6Z7303	15	6Z8612	23
6Z7304	15	6Z8812	17
6Z7305	15	6Z8829	17
6Z7306	9, 14	6Z8960	15
6Z7307	15	6Z8965	40
6Z7309	26, 35	6Z8969	25, 35
6Z7328	11	6Z8976	20
6Z7333	40	6Z8987	20
6Z7353	15	6Z9249	23
6Z7361	26, 31	6Z9257	25, 35
6Z7400	13	6Z9265	20
6Z7421	13	6Z9534	25, 31
6Z7435	26, 35	6Z9612	17
6Z7436	26, 35	6Z9623	25, 29
6Z7476	23	6Z9624	25, 29
6Z7478	23	6Z9625	25, 29
6Z7484	17	6Z9626	25, 29
6Z7494	25	6Z9627	25, 29
6Z7496	13	6Z9634	25, 29
6Z7497	13	6Z9635	25, 29

6Z9636.....	27, 29	6ZC538.....	41
6Z9676.....	20	6ZC588.....	41
6Z9680.....	20	6ZC591.....	41
6Z9681.....	20	6ZC625.....	41
6Z9684.....	20	6ZC627.....	41
6Z9731.....	11	6ZC632.....	41
6Z9736.....	20	6ZC633.....	41
6Z9783.....	11	6ZC635.....	37
6ZA219.....	25, 29	6ZC636.....	9, 38, 40, 42, 44, 46, 48, 50, 52
6ZA277.....	9	6ZC637.....	41
6ZA280.....	17	6ZC638.....	41
6ZA328.....	13	6ZC641.....	17, 18
6ZA335.....	20	6ZC643.....	41
6ZA355.....	40	6ZC645.....	20
6ZA517.....	40	6ZC647.....	20
6ZA523.....	40	6ZC687.....	9, 54, 56
6ZA529.....	37, 40	6ZC700.....	20
6ZA531.....	40	6ZC717.....	41
6ZA533.....	40	6ZC759.....	20
6ZA534.....	40	6ZC782.....	13
6ZA540.....	40	6ZC805.....	55
6ZA541.....	40	6ZC936.....	9, 36
6ZA543.....	40	6ZC937.....	37
6ZA544.....	40	6ZC960.....	37
6ZA545.....	40	6ZC961.....	37
6ZA561.....	40	6ZC964.....	41
6ZA562.....	40	6ZC965.....	41
6ZA574.....	40	6ZC966.....	41
6ZA579.....	37	6ZC967.....	41
6ZA580.....	37	6ZC968.....	41
6ZA584.....	37	6ZC969.....	41
6ZA613.....	40	6ZC970.....	41
6ZA693.....	25, 29	6ZC971.....	41
6ZA695.....	25, 29	6ZC972.....	41
6ZA854.....	17	6ZC973.....	41
6ZA875.....	17	6ZC974.....	41
6ZB081.....	40	6ZC975.....	41
6ZB100.....	40	6ZC976.....	41
6ZB105.....	40	6ZC977.....	41
6ZB109.....	40	6ZC978.....	41
6ZB110.....	40	6ZC979.....	37, 41
6ZB111.....	40	6ZC980.....	9
6ZB112.....	40	103-002-26.....	40
6ZB234.....	37	331MAG.....	13
6ZB320.....	40	2110.....	17
6ZB321.....	40	3213.....	40
6ZB322.....	40	3279.....	17
6ZB631.....	9	6435K12.....	19
6ZB848.....	55	94052A131.....	17, 25, 29
6ZB987.....	41	225708.....	23
6ZC362.....	55	400501.....	27, 35

Part Number Index

801250.....	25, 35
801851	20
4001056	15
4001057	15
4015016.....	17
4099017	15, 25, 31
4527002	13
4527003	13
AS1000F-04	17
BHCS5/16-18X5/8	17
BHCS8-32X1/2.....	25, 35
BHCS10-32X3/4.....	17, 20
BMHS-150	20
BMHS-159	17
BMHS-160	17
BR-42	13
FA-1 BOXES	9
FW-M4.....	25, 31, 35
HDH 30" X/RAILS	13
HHCS5/16-18X2.5.....	13
HHCS5/16-18X7/8	20
J5P30823	55
J521001194	41
JN1/4-20	25, 35
JN5/16-24.....	20
KQE11-36	13
KQL07-35S.....	55, 57
LE-FM-2.....	13
LN1/4-20	25, 31
LN10-32.....	15
SHCS1/4-20X1-1/4.....	25, 35
SHCS1/4-20X7/8	25, 35
SHCS5/16-18X3/4	17
SHCS5/16-18X7/8	17
SHCS10-24X1-3/4	20
SHCS10-32X1	15, 25, 31
SHCS-10-32X3/4.....	25, 29, 35
SHCS10-32X7/8	23, 25, 31
SHCS-M4X30.....	25, 31
SLW-M4.....	25, 31, 35
SS1/4-20X5/16.....	20
SS10-32X1/2.....	20
TR-42.....	13
TS#12X1	13
TS#12X3/4	13
TS#14X1	13
WN10-32X7/16	13, 23, 25, 29
X/RAILS, HDH 30"	13

