

PARTS CATALOG NO. 9518-1

MARCH 1989

---

# FLANGE MACHINES

## MODELS PFM 517

---

---

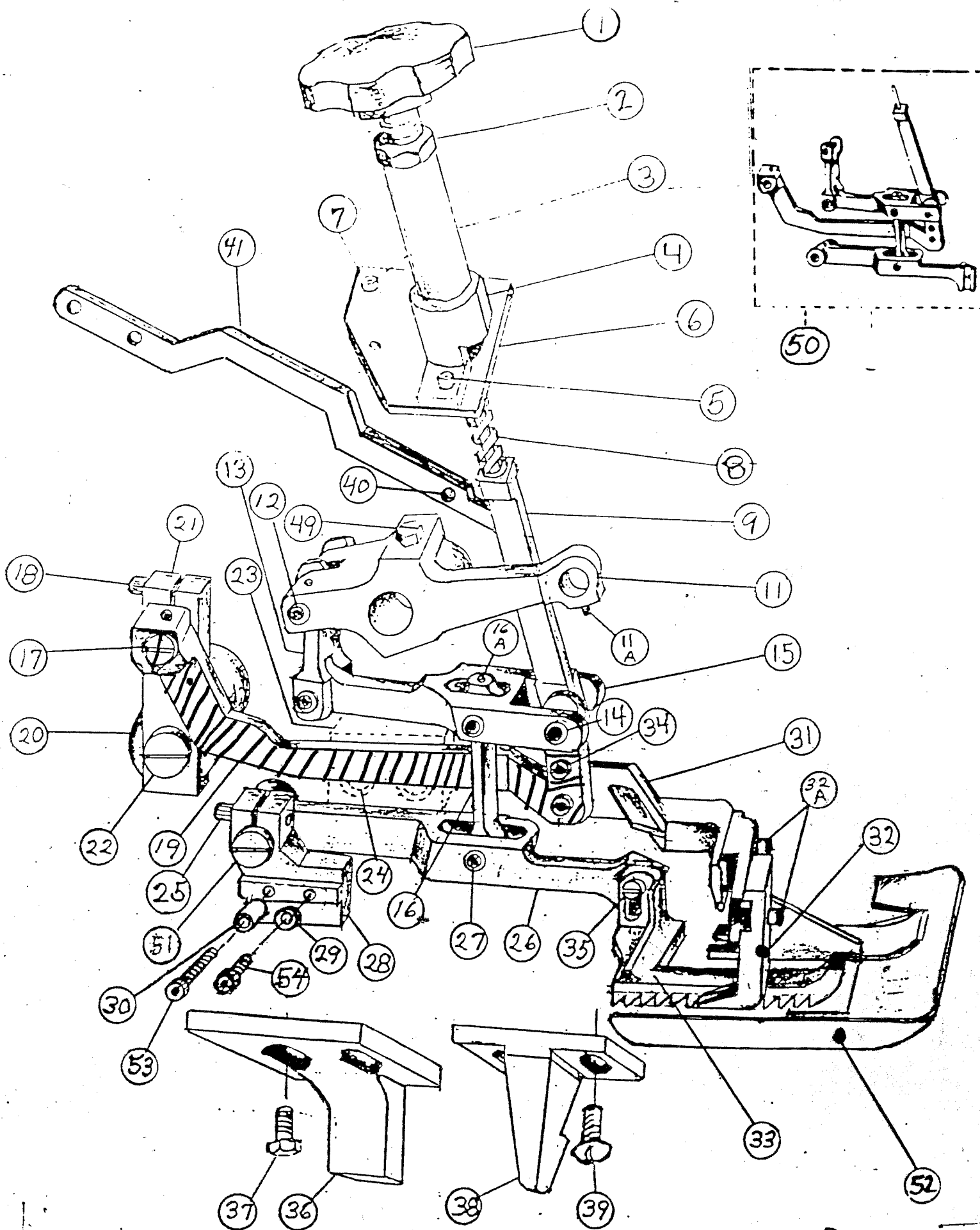
**PSM**

# FLANGE MACHINES

## MODELS PFM 517

### TABLE OF CONTENTS

	PAGE
WALKING FOOT MECHANISM .....	2-3
MACHINE BED FRAME .....	4-5
(1) MISCELLANEOUS COVERS .....	6-7
(2) MISCELLANEOUS COVERS .....	8-9
CRANKSHAFT MECHANISM .....	10-11
NEEDLE DRIVE AND NEEDLE GUARD MECHANISM .....	12-13
NEEDLE BAR MECHANISM .....	14-15
SPREADER DRIVE MECHANISM .....	16-17
OVEREDGE (LEFT) LOOPER MECHANISM .....	18-19
(1) CHAINSTITCH LOOPER MECHANISM .....	20-21
(2) CHAINSTITCH LOOPER MECHANISM .....	22-23
(1) MAIN AND DIFFERENTIAL FEED MECHANISM .....	24-25
(2) MAIN AND DIFFERENTIAL FEED MECHANISM .....	26-27
UPPER AND LOWER KNIFE MECHANISM .....	28-29
PRESSER FOOT LIFT MECHANISM .....	30-31
LUBRICATING MECHANISM .....	32-33
THREAD STAND .....	34-35
ACCESSORIES .....	36-37

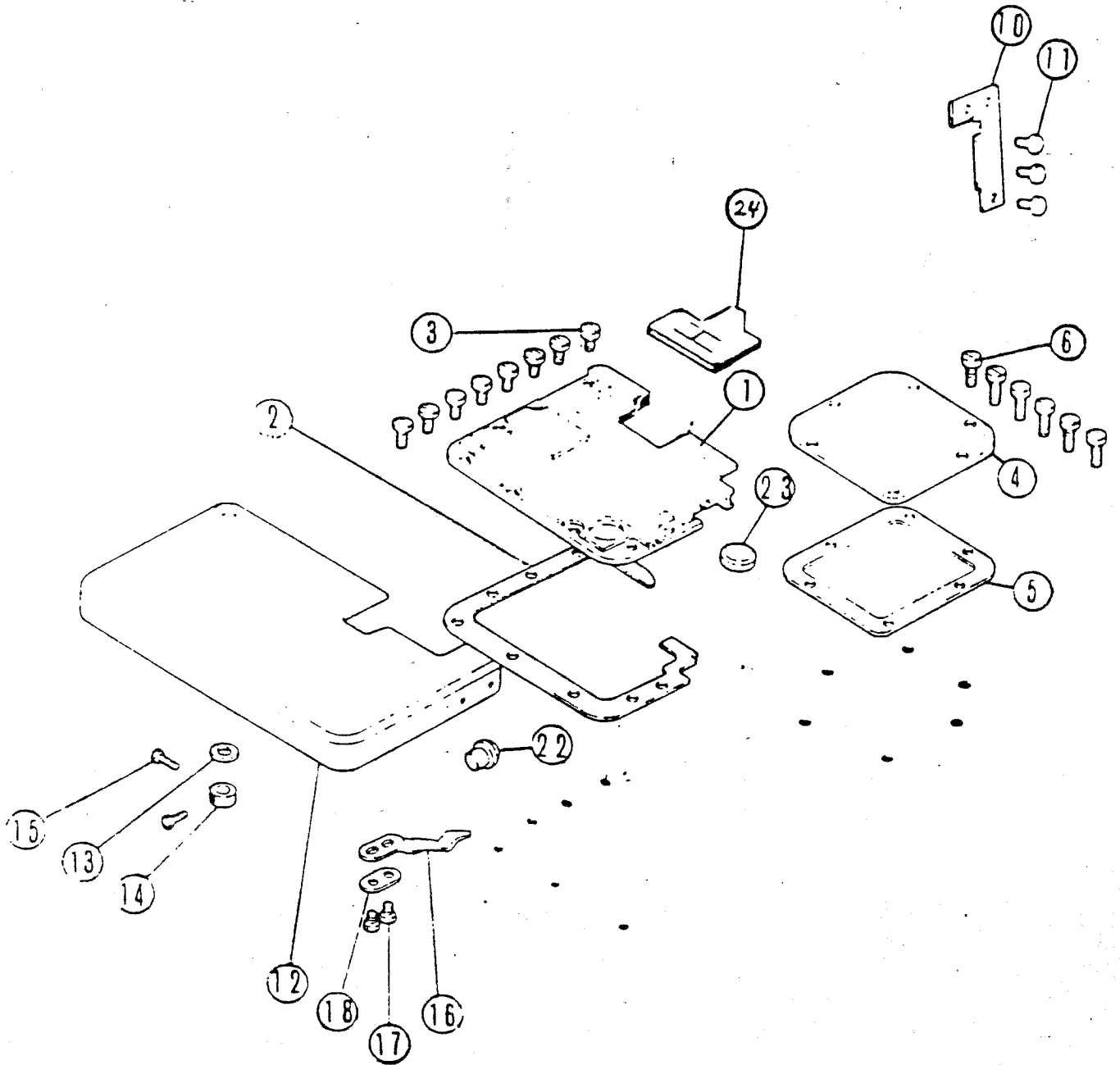


REF. NO.	PART NUMBER	DESCRIPTION	QTY.
1	4621	THUMBSCREW	1
2	1186	THUMBSCREW NUT	1
3	4620	PRESSURE SPRING SLEEVE	1
4	1737	PRESSURE SPRING BASE	1
5	SHCS8-32 X 1/8	FLANGE SCREW	1
6	1728	PRESSURE SPRING MNTG. BLCK	1
7	SHCS8-32 X 1/2	SCREW	3
8	4623	PRESSURE SPRING (94)	1
9	4622	PRESSER BAR	1
11	4512	NEEDLE LDRIVE ARM	1
11A	619400	SCREW	1
12	4845	PIVOT PIN CONN. LINK	1
13	1706	LINK BEAM CONNECTOR	1
14	1720	PIVOT PIN (LONG)	2
15	4513	WALKING FOOT BEAM	1
16	1912	LINK TOP FEED CONNECTOR	1
16A	HLSS4-40 X 5/64	SCREW	7
17	1271	ECCENTRIC STUD	1
18	SHCS6-32 X 1/2	CLAMP SCREW	1
19	SP1709	PRESSER FOOT BEAM	1
20	1724	LOCATING STUD	1
21	1725	LOCATING BAR	1
22	PHMS1/4-28X3/4	SCREW	1
23	1712	INSIDE RUBBING BLOCK	1
24	SHCS8-32 X 1/2	SCREW	2
25	SHCS4-40 X 3/8	CLAMP SCREW	1
26	SP1708	TOP FEED MAIN BEAM	1
27	1718	PIVOT PIN (SHORT)	2
28	4589	TOP FEED HOLDER	1
29	FW #6	WASHER	2
30	4590	FERRULE	2
*-31	4619	PRESSER FOOT EXTENSION	1
32	<del>4579</del> - 4579	PRESSER FOOT LEFT	1
4843 32A	SHCS5-40 X 1/4	SCREW	1
33	SP2370	WALKING TOP FEED FOOT	1
34	SHCS5-40 X 1/4	SCREW	2
35	SHCS5-44 X 3/8	WALKING FOOT SET SCREW	1
36	4731	RETAINING BLOCK REAR	1
37	HB10-32 X 1/2	SCREW	2
38	2033	RETAINING BLOCK (FRONT)	1
39	BHS10-32 X 3/8	SCREW	2
40	DP 3/16 X 3/4	AUX. LIFTER ARM DOWEL PIN	1
41	4452	AUX. LIFTER ARM	1
49	611620	SCREW	1
50	10006	LINKAGE ASSEMBLY	1
51	4594	ECC STUD	1
52	4586	PRESSER FOOT RIGHT	1
53	SHCS6-32 X 1/2	SCREW	1
54	SHCS6-32 X 5/8	SCREW	1



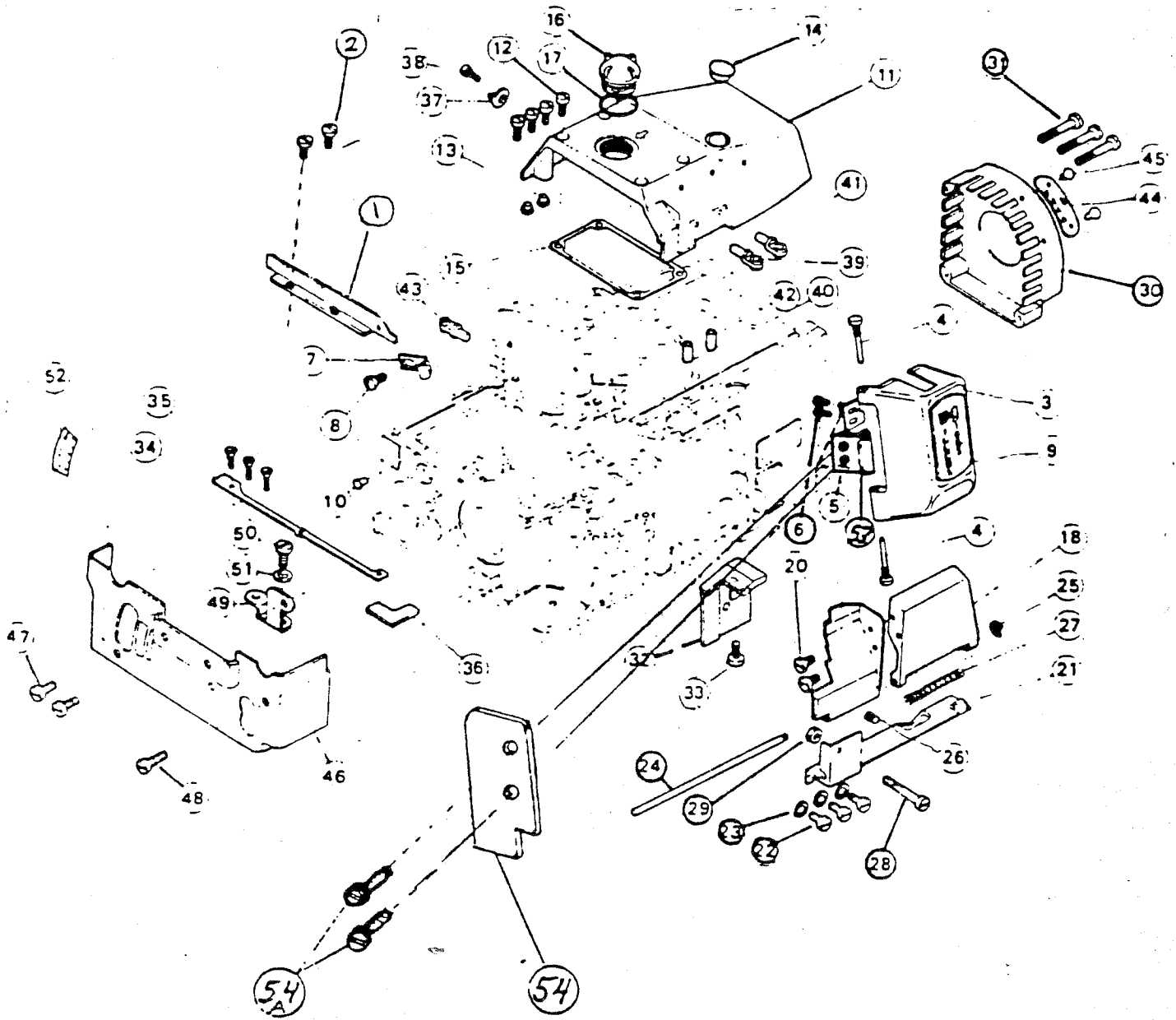
MACHINE BED FRAME

<u>REF. NO.</u>	<u>PART NUMBER</u>	<u>DESCRIPTION</u>	<u>QTY.</u>
1	617140	MACHINE ARM (RIGHT)	1
2	618500	SCREW	4
3	610980	PIN	2
4	613580	GASKET	1
5A	4615	SIDE COVER (LEFT)	1
6	619240	SCREW	1
7	619000	SCREW	2
10	610980	PIN	1
11	617380	COVER PLATE	1
12	619840	SCREW	6
13	614360	PLUG	1
14	619540	SCREW	2
15	614280	OIL FILTER	1
16	614360	PLUG	1
17	612000	OIL SIGHT GAUGE	1
20	612020	BED PIN	4
21	611680	SCREW	1
22	617360	PLUG	1
23	619040	SCREW	1
24	611000	WASHER	1



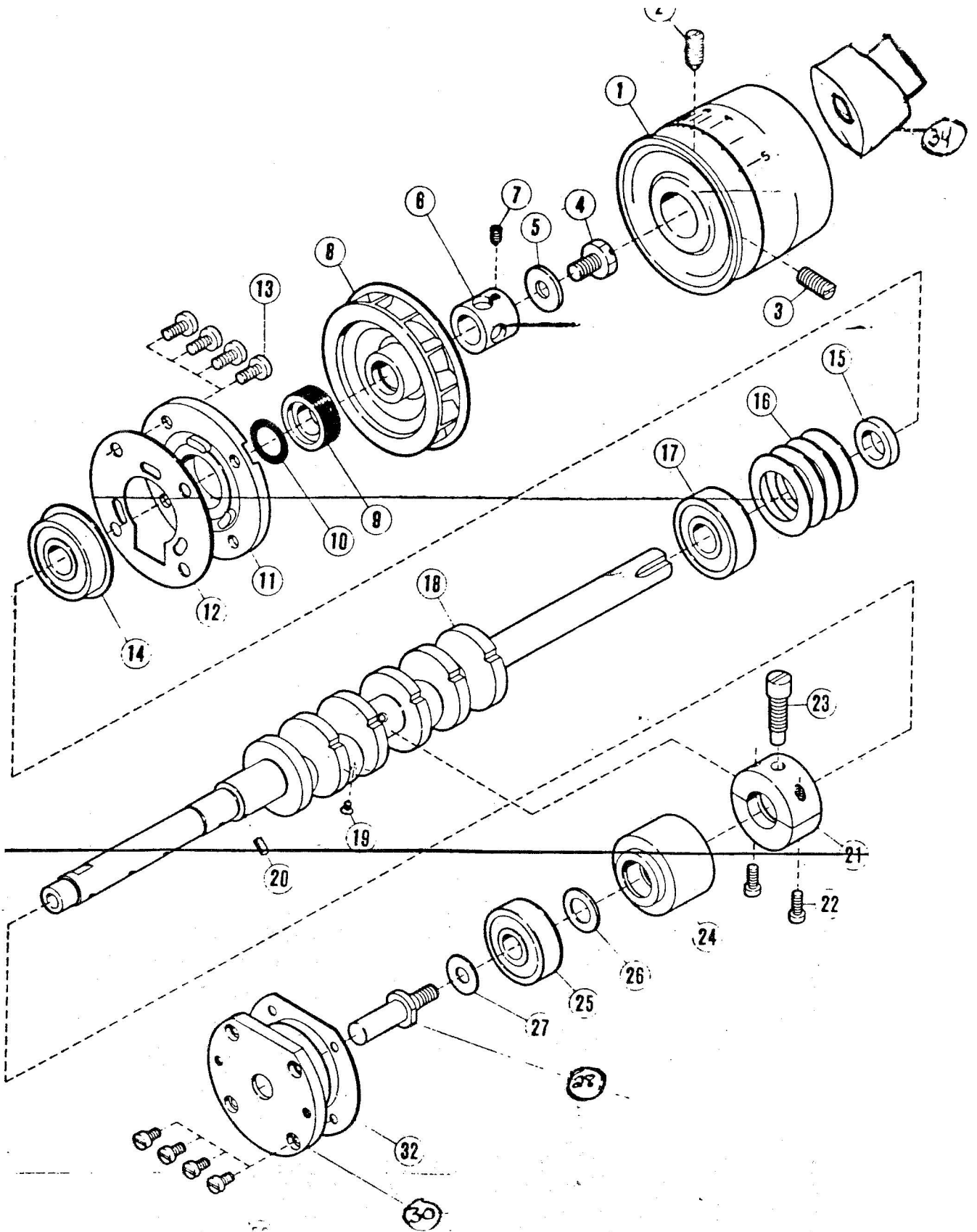
(1) MISCELLANEOUS COVERS

<u>REF. NO.</u>	<u>PART NUMBER</u>	<u>DESCRIPTION</u>	<u>QTY.</u>
1	1735	BEDPLATE	1
2	616540	GASKET	1
3	618340	SCREW	8
4	616100	BED COVER PLATE (RIGHT)	1
5	616120	GASKET	1
6	618740	SCREW	6
10	616640	FACE PLATE	1
11	618340	SCREW	3
12	617160	CLOTH PLATE, COMPLETE	1
13	611760	HINGE STUD THRUST WASHER	1
14	611260	HINGE STUD THRUST COLLAR	1
15	618600	COLLAR SCREW	2
16	613520	LOCK SPRING	1
17	610200	LOCK SPRING SCREW	2
18	610900	LOCK SPRING SCREW WASHER	1
19	619160	LOCK SPRING LATCH	1
20	619800	STOP SCREW	1
21	618280	STOP SCREW NUT	1
22	616820	CUSHION (SMALL)	1
23	614340	CUSHION (LARGE)	1
24	1223	OIL SHIELD	1



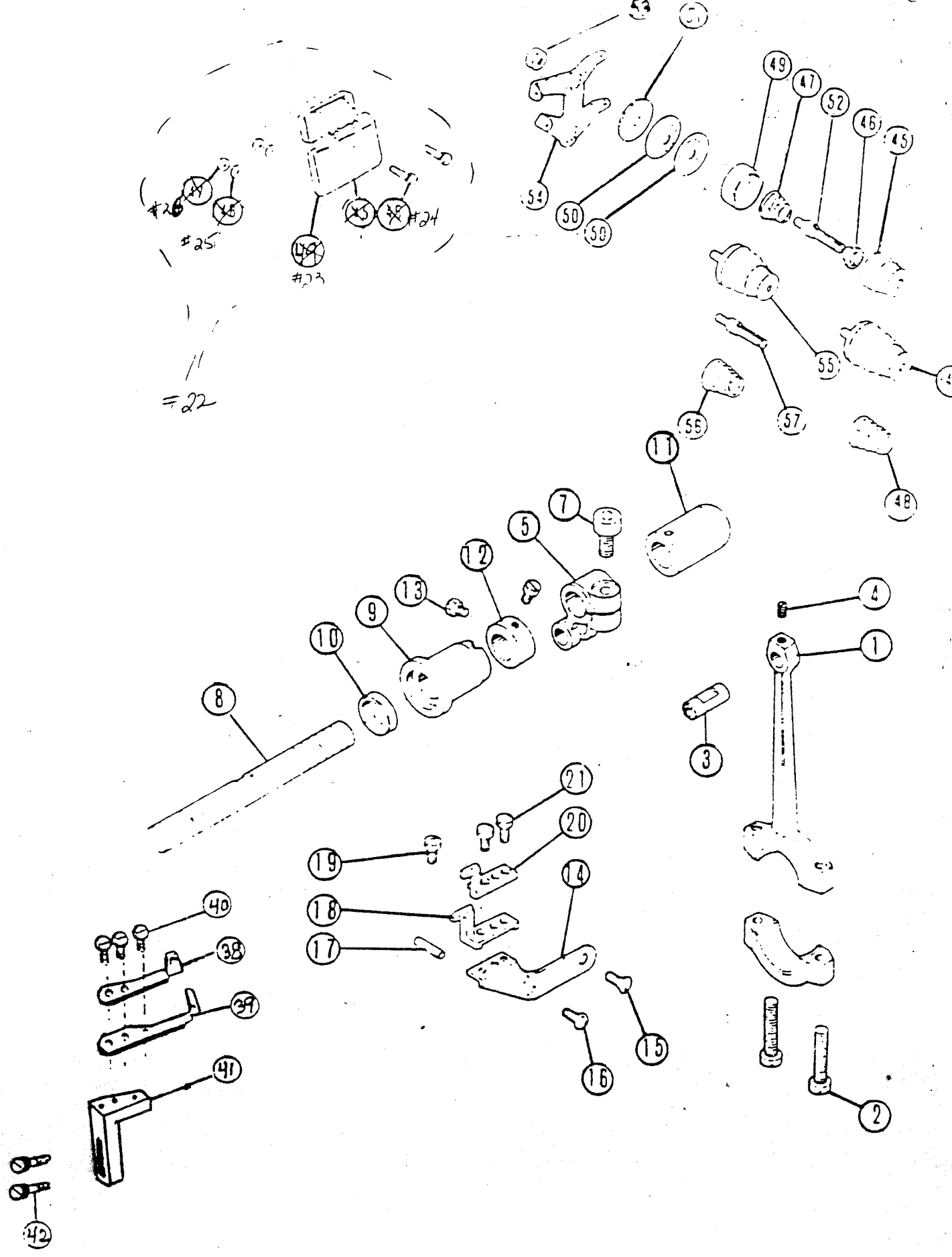
## (2) MISCELLANEOUS COVERS

<u>REF.</u> <u>NO.</u>	<u>PART NUMBER</u>	<u>DESCRIPTION</u>	<u>QTY.</u>
1A	4013	FABRIC GUARD	2
3	614940	NEEDLE BAR COVER	1
4	611820	HINGE PIN	1
5	611860	LOCK SPRING	1
6	610220	LOCK SPRING SCREW	2
7	1156	COVER LATCH	1
8	618340	LOCK SPRING LATCH SCREW	1
10	610680	CUSHION RUBBER	1
11	615860	TOP COVER	1
12	618980	SCREW	4
13	616820	CUSHION	4
14	616060	PLUG	1
15	616800	GASKET	1
16	614820	OIL SPLASH SIGHT WINDOW	1
17	614840	'O' RING	1
18	4412	FRONT COVER (ASSEMBLY)	1
20	610140	SCREW	2
21	614880	HINGE	1
22	610180	HINGE SCREW (SHORT)	3
23	610400	HINGE SCREW WASHER	3
24	614900	HINGE PIN	1
25	610920	HINGE PIN STOP RING	1
26	618920	STOP SCREW	1
27	614920	HINGE SPRING	1
28	618660	HINGE SCREW (LONG)	1
29	618820	HINGE SCREW (LONG) NUT	1
30	613960	OIL COOLER COVER	1
31	618660	SCREW	3
32	615060	OIL SHIELD	1
33	618940	SCREW	1
34	613540	CUSHION RUBBER (LEFT)	1
35	618400	SCREW	3
36	613560	CUSHION RUBBER (FRONT)	1
37	610540	LOOPER THREAD EYELET	1
38	618640	SCREW	1
39	611060	LEFT LOOPER THREAD EYELET	1
40	611140	LEFT LOOPER THREAD TUBE	1
41	611060	LEFT LOOPER THREAD EYELET	1
42	611140	LEFT LOOPER THREAD TUBE	1
43	611080	LOOPER THREAD EYELET	1
44	613490	STITCH INDICATOR	1
45	614500	RIVET	1
46	614420	MACHINE COVER (LEFT)	1
47	618640	SCREW (SHORT)	2
48	619060	SCREW (LONG)	1
49	614440	SPACER	1
50	618120	SPACER SCREW	1
51	611640	SPACER SCREW WASHER	1
52	616080	INDICATION PLATE	1
53	1158	COVER BRACKET	1
54	1207	GUARD COVER	1



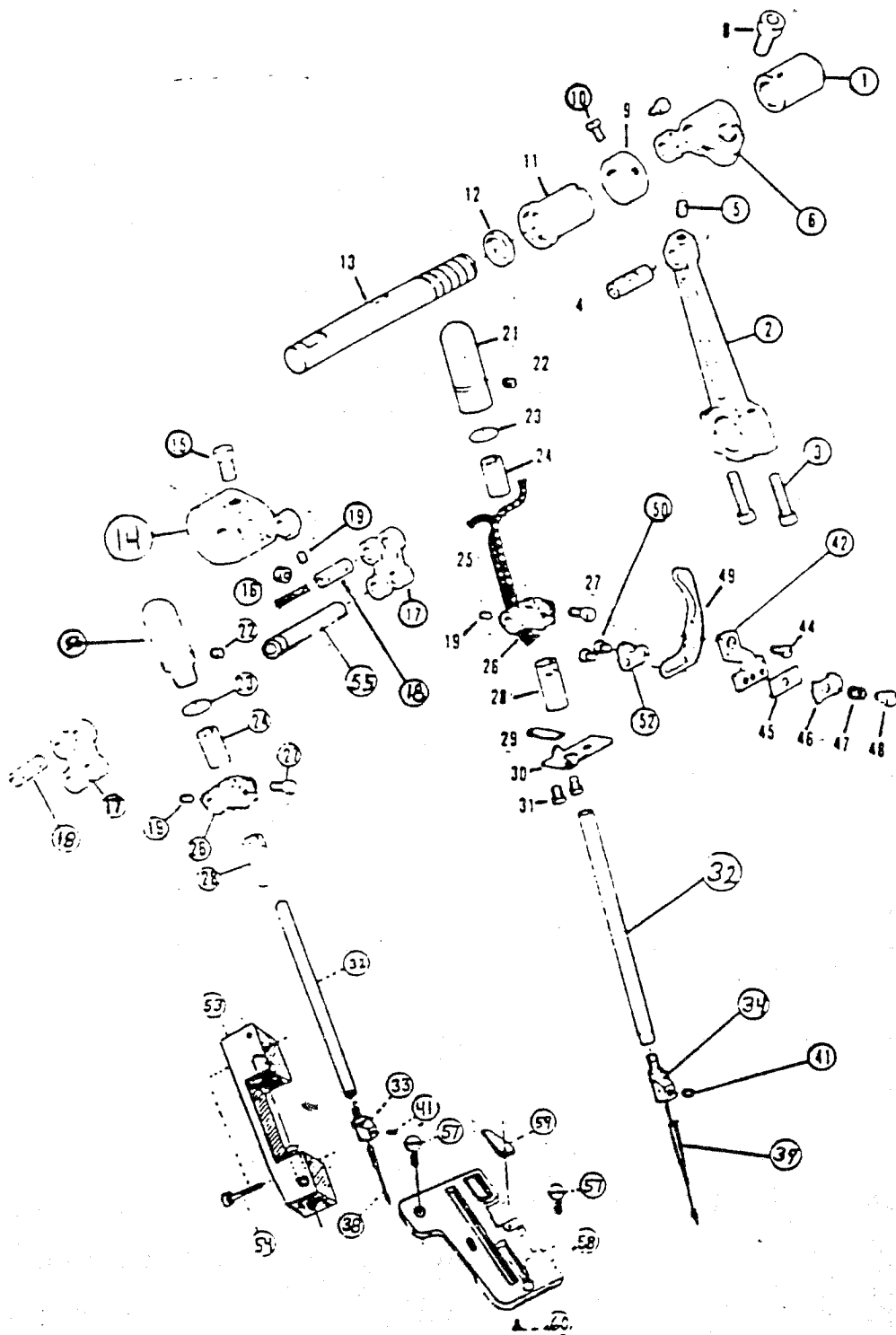
## CRANKSHAFT MECHANISM

REF. NO.	PART NUMBER	DESCRIPTION	QTY.
1	612220	PULLEY	1
2	618520	SCREW	1
3	618540	SCREW	1
4	619260	SCREW	1
5	612200	WASHER	1
6	612260	COLLAR	1
7	619340	SCREW	1
8	613500	COOLING FAN	1
9	616770	OIL SEAL COLLAR	1
10	615540	'O' RING	1
11	616775	PLATE	1
12	612180	GASKET	1
13	618740	SCREW	4
14	612140	BALL BEARING	1
15	612120	SPACER	1
16	612100	WASHER	4
17	611480	BEARING	1
18	616140	CRANKSHAFT	1
19	619440	SCREW	1
20	611580	OIL FELT	1
21	612080	BUSHING (CENTER)	1
22	610080	SCREW	2
23	619300	SCREW	1
24	612060	BUSHING (LARGE)	1
25	612040	BALL BEARING	1
26	614260	THRUST WASHER	1
27	613840	WASHER	1
28	614520	CRANKSHAFT EXTENSION	1
30	614580	HOUSING	1
32	613680	GASKET	1
33	619520	SCREW	4
34	4740	SYNCHRONIZER ADAPTOR	1
35	SHCS8-32X1 1/2	SCREW	3



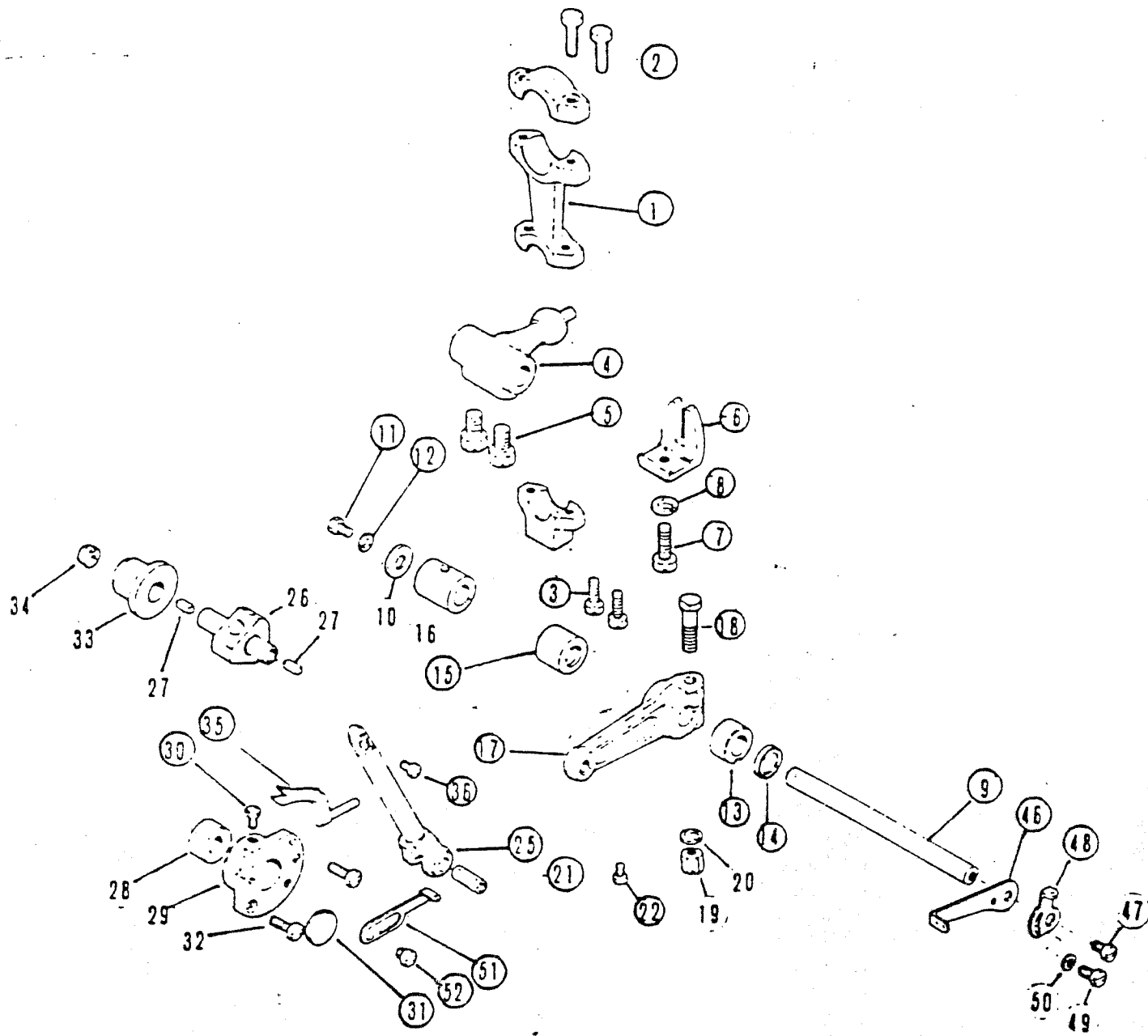
NEEDLE DRIVE & NEEDLE GUARD MECHANISM

<u>REF. NO.</u>	<u>PART NUMBER</u>	<u>DESCRIPTION</u>	<u>QTY.</u>
1	612260	NEEDLE BAR DRIVE CONN.	1
2	619200	CAP SCREW	2
3	614760	PIN	1
4	619220	PIN SCREW	1
5	4588	NEEDLE BAR DRIVE CRANK	1
7	619700	CLAMP SCREW	1
8	615400	NEEDLE BAR DRIVE SHAFT	1
9	615420	BUSHING (LEFT)	1
10	615460	BUSHING (LEFT) OIL SEAL	1
11	615440	BUSHING (RIGHT)	1
12	611220	THRUST COLLAR	1
13	618600	THRUST COLLAR SCREW	1
14	614240	NEEDLE GUARD BRACKET	1
15	618700	SCREW (LARGE)	1
16	619120	SCREW (SMALL)	1
17	613980	RIGHT LOOPER THREAD TUBE	1
18	614200	OVERLOCK NDL. GRD. (REAR)	1
19	618380	SCREW	2
20	614220	NEEDLE GUARD (FRONT)	1
21	618420	SCREW	2
22	614800	EYE GUARD COMPLETE	1
23	614780	PLASTIC EYE GUARD ONLY	1
24	610120	SCREW	2
25	610400	WASHER	2
26	618320	NUT	2
38	SP1198	FRONT NEEDLE GUARD	1
39	SP1197	REAR NEEDLE GUARD	1
40	SHCS6-32 X 3/8	SCREW	3
41	SP1196	NEEDLE GUARD BRACKET	1
42	HXB10-32 X 1/2	BOLT	2
44	616880	NDL. THREAD TENSION COMP.	1
45	616680	NUT	1
46	616700	SPRING BUSHING	1
47	611040	SPRING (HEAVY)	1
48	611120	SPRING (LIGHT)	1
49	616740	SPRING CUP	1
50	611460	DISC.	2
51	616720	CUSHION FELT	1
52	618880	POST	1
53	618800	POST LOCK NUT	1
54	615880	GUIDE	1
55	616840	NEEDLE THRD. TENSION COMP.	1
56	611040	SPRING (HEAVY)	1
57	618560	POST	1



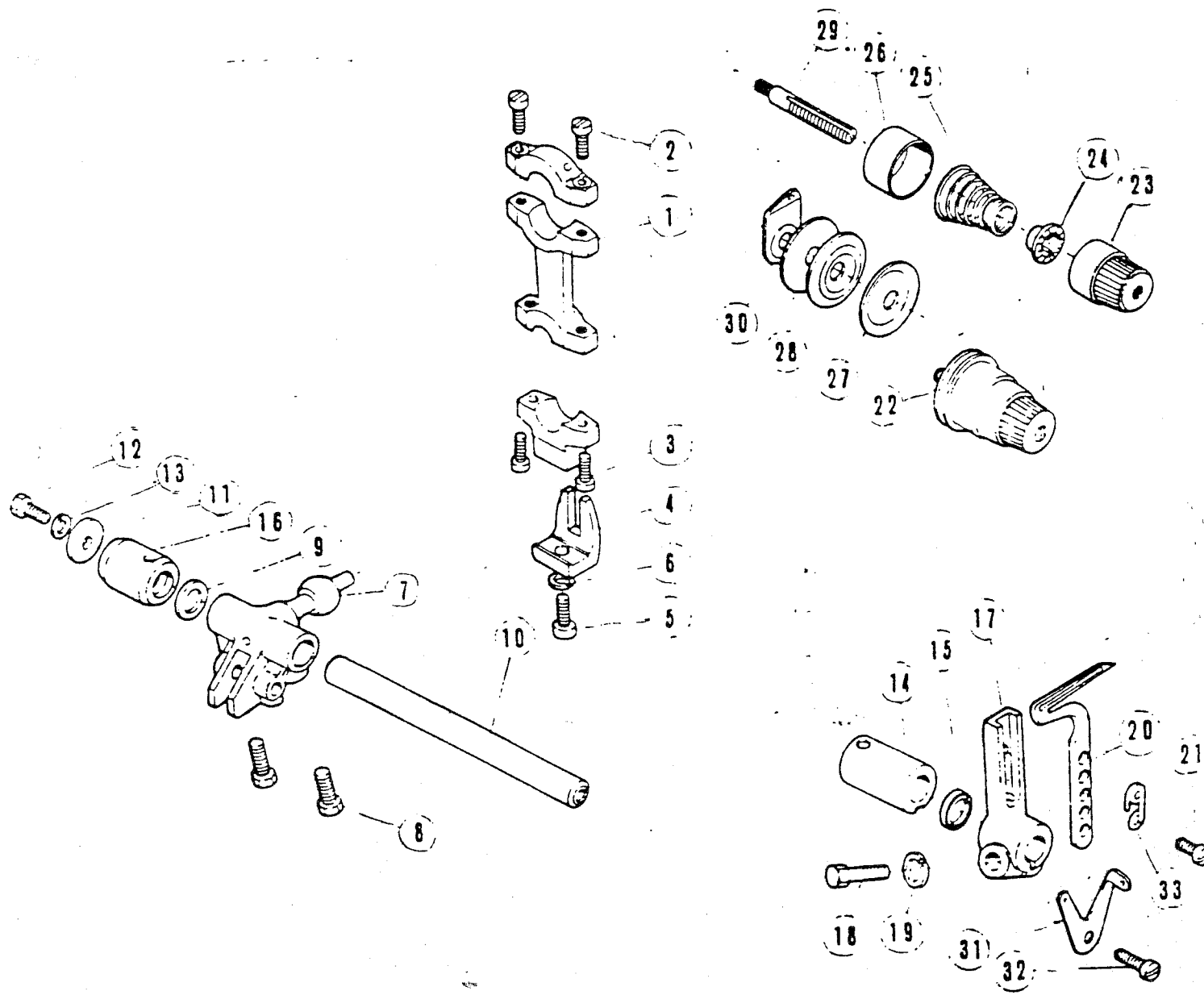
## NEEDLE BAR MECHANISM

REF. NO.	PART NUMBER	DESCRIPTION	QTY.
1	615440	BUSHING (RIGHT)	1
2	612260	CONNECTION	1
3	619200	SCREW	2
4	614760	PIN	1
5	619220	SCREW	1
6	4588	CRANK (REAR)	1
7	619700	SCREW	1
9	611220	THRUST WASHER	1
10	619520	SCREW	2
11	615420	BUSHING (LEFT)	1
12	615460	OIL SEAL	1
13	615400	SHAFT	1
14A	4512	CRANK (FRONT)	1
15	611620	SCREW	1
16	619420	SCREW	1
17	4718	LINK	2
18	610960	PIN	2
19	619400	SCREW	2
20	611600	OIL WICK	2
21	617240	CAP	1
22	610420	SCREW	1
23	610740	'O' RING	2
24	613900	BUSHING UPPER	2
25	617420	OIL WICK	1
26	616600	NEEDLE BAR CLAMP	2
27	610060	SCREW	2
28	613920	BUSHING (LOWER)	2
29	617220	OIL FELT	1
30	617200	DUST SHIELD	1
31	618440	SCREW	2
32	617280	NEEDLE BAR	2
33	617300	NEEDLE HOLDER	1
34	2707	NEEDLE HOLDER	1
38	PSM-130	NEEDLE/CHAINSTITCH	1
39	PSM-130	NEEDLE/OVERLOCK	1
41	619400	SCREW	2
42	614040	RETAINER BRACKET	1
44	619640	SCREW	1
45	611720	GUIDE	1
46	610760	GUIDE	1
47	617340	SPRING	1
48	629860	SCREW	1
49	611880	TAKEUP	1
50	610135	SCREW	2
52	614060	THREAD GUIDE	1
53	1253	NEEDLE BAR SUPPORT ASSY.	1
54	SHCS8-32X1 1/8	NEEDLE BAR SUPPORT SCREWS	2
55	4597	CONNECTING LINK PIN	1
56	1160A	NEEDLE BAR CAP	1
57	610560	SCREW	2
58	4737	NEEDLE PLATE	1
59	617400	NEEDLE PLATE CHAIN FINGER	1
60	619440	SCREW	1



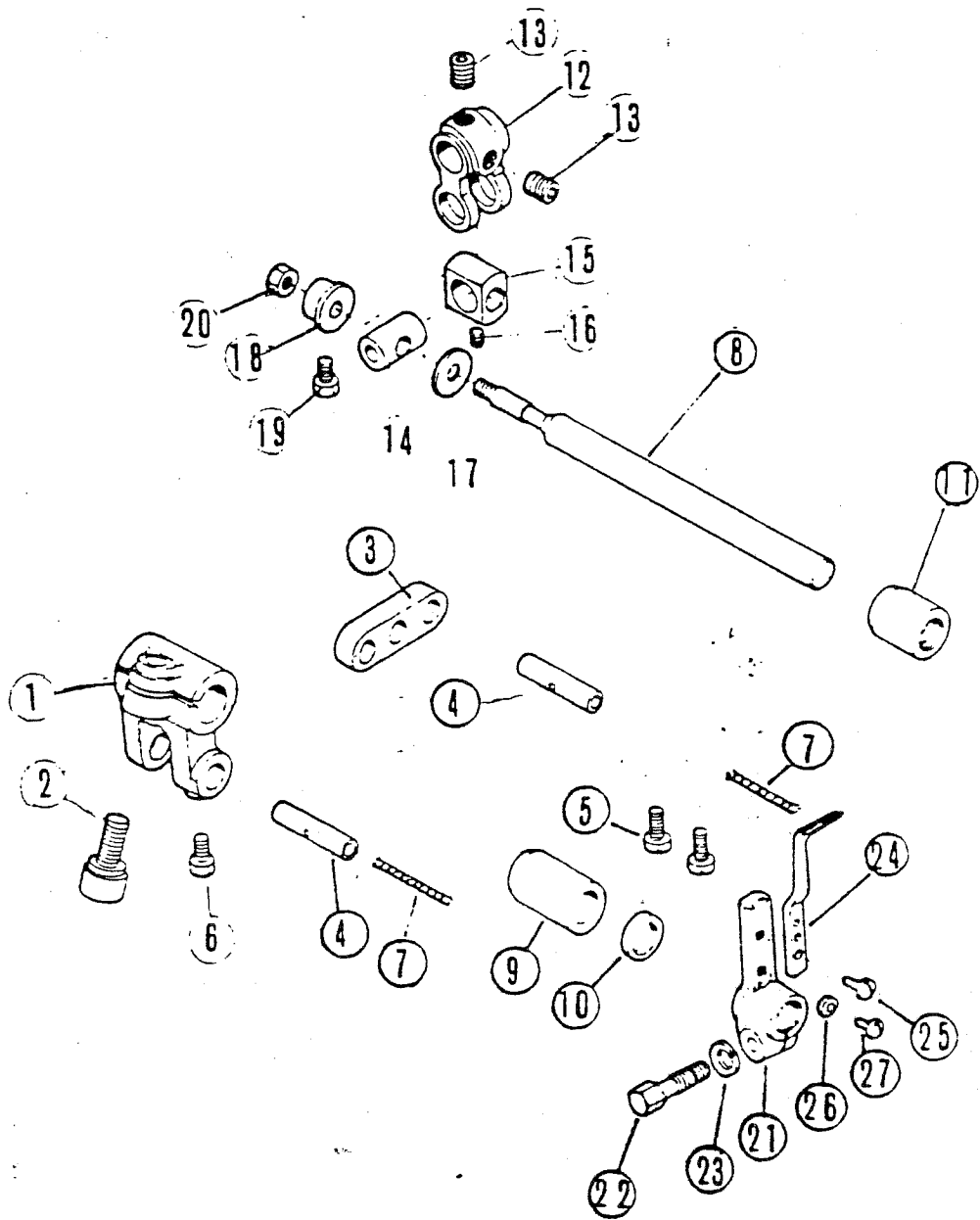
SPREADER DRIVE MECHANISM

<u>REF. NO.</u>	<u>PART NUMBER</u>	<u>DESCRIPTION</u>	<u>QTY.</u>
1	616160	RIGHT LOOPER DRIVE CONN.	1
2	617600	CAP SCREW (LARGE)	2
3	610040	CAP SCREW (SMALL)	2
4	612280	CRANK	1
5	611620	CRANK SCREW	2
6	611160	GUIDE	1
7	610020	GUIDE SCREW	1
8	611640	GUIDE SCREW WASHER	1
9	612400	RIGHT LOOPER DRIVE SHAFT	1
10	612640	THRUST WASHER	1
11	617540	THRUST WASHER SCREW	1
12	611640	WASHER	1
13	615760	BUSHING (FRONT)	1
14	612300	BUSHING (FRONT) OIL SEAL	1
15	612440	BUSHING (CENTER)	1
16	616620	BUSHING (REAR)	1
17	4581	RIGHT LOOPER LEVER CRANK	1
18	619280	CLAMP SCREW	1
19	619380	CLAMP SCREW NUT	1
20	611560	CLAMP SCREW NUT WASHER	1
21	615480	PIN	1
22	618600	PIN SCREW	1
25	616000	RIGHT LOOPER LEVER	1
26	615100	GUIDE	1
27	613600	OIL FELT	2
*	614400	ASSY., REF. #28, 29, 30	1
28	612380	HOUSING	1
29	612360	BUSHING (FRONT)	1
30	618600	BUSHING FRONT SCREW	1
31	615220	HOUSING CAP	1
32	610100	HOUSING CAP SCREW	2
33	617080	BUSHING (REAR)	1
34	617060	CAP	1
35	614020	SPREADER	1
36	610700	CLAMP SCREW	1
46	616660	THREAD TAKEUP	1
47	618120	SCREW	1
48	614640	AUXILIARY	1
49	618200	AUXILIARY SCREW	1
50	611960	AUXILIARY SCREW WASHER	1
51	614660	THREAD GUIDE WIRE	1
52	618140	SCREW	1



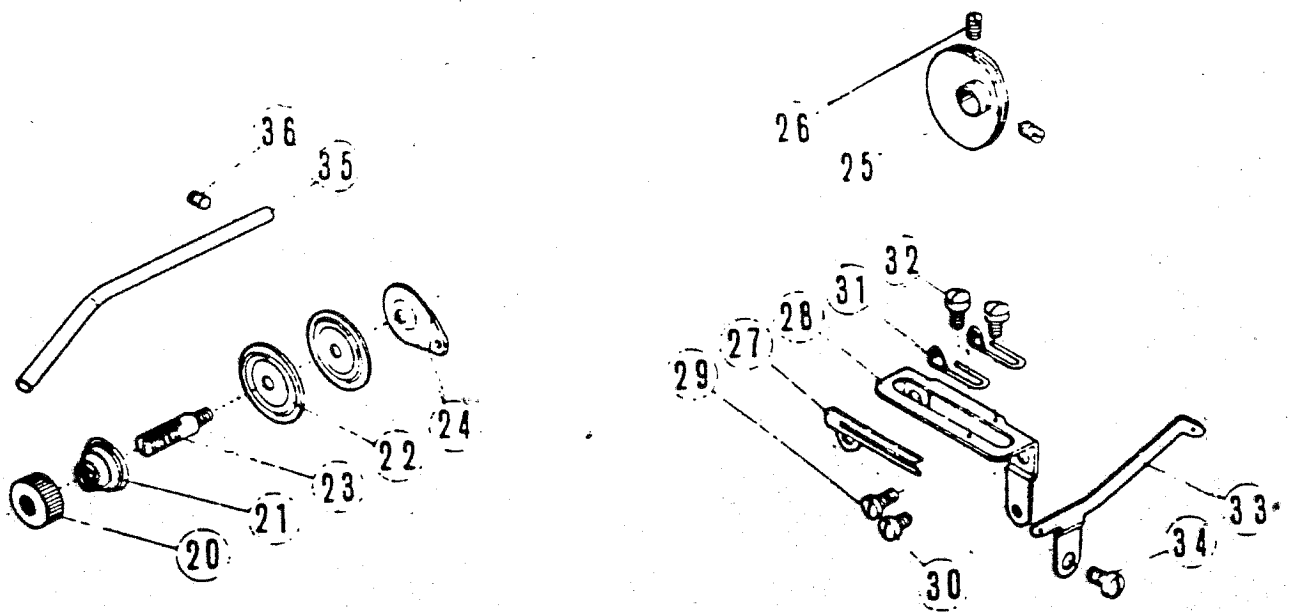
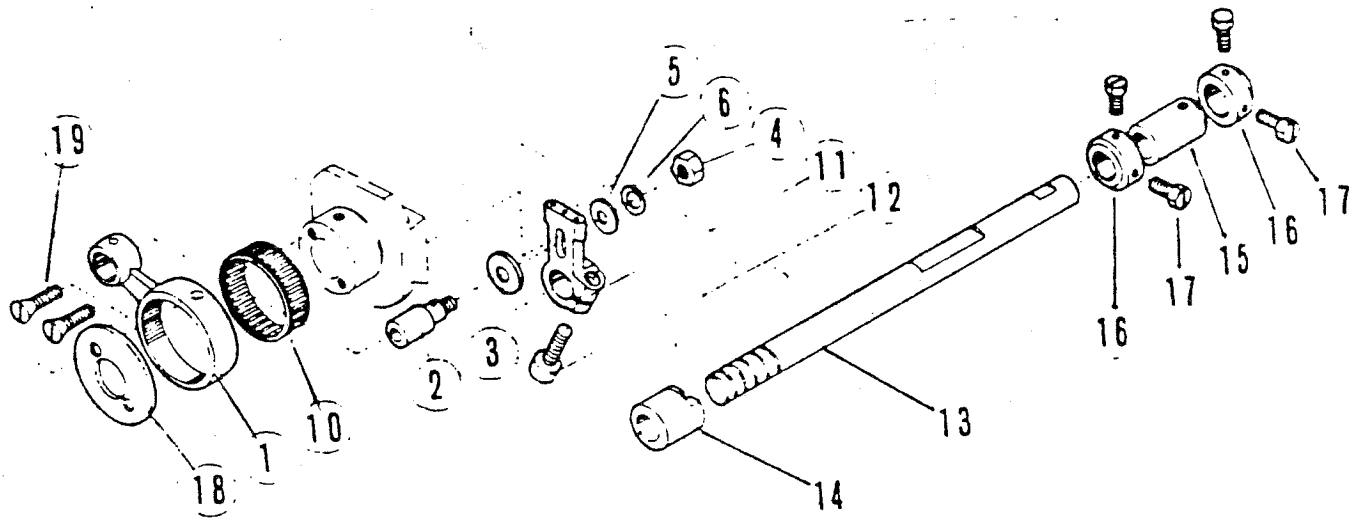
OVEREDGE (LEFT) LOOPER MECHANISM

REF. NO.	PART NUMBER	DESCRIPTION	QTY.
1	616160	LEFT LOOPER DRIVE CONN.	1
2	617600	CAP SCREW (LARGE)	2
3	610040	CAP SCREW (SMALL)	2
4	611160	GUIDE	1
5	610020	GUIDE SCREW	1
6	611640	GUIDE SCREW WASHER	1
7	615240	LEFT LOOPER DRIVE CRANK	1
8	611620	SCREW	2
9	614260	THRUST WASHER	1
10	612400	LEFT LOOPER LEVER SHAFT	1
11	613660	THRUST WASHER	1
12	617540	THRUST WASHER SCREW	1
13	611640	WASHER	1
14	615780	BUSHING (FRONT)	1
15	612300	BUSHING FRONT OIL SEAT	1
16	612320	BUSHING (REAR)	1
17	614000	RIGHT LOOPER LEVER	1
18	619360	CLAMP SCREW	1
19	613640	CLAMP SCREW WASHER	1
20	X-1002	RIGHT LOOPER	1
21	610120	SCREW	1
22	616860	THREAD TENSION COMPLETE	1
23	616680	NUT	1
24	616700	SPRING BUSHING	1
25	611180	SPRING (MIDDLE)	1
26	616740	SPRING CUP	1
27	611460	DISC	2
28	616720	CUSHION FELT	1
29	618560	POST	1
30	611920	GUIDE	1
31	614620	LEFT LOOPER THREAD TAKEUP	1
32	618120	SCREW	1
33	610660	THREAD GUIDE WIRE	1



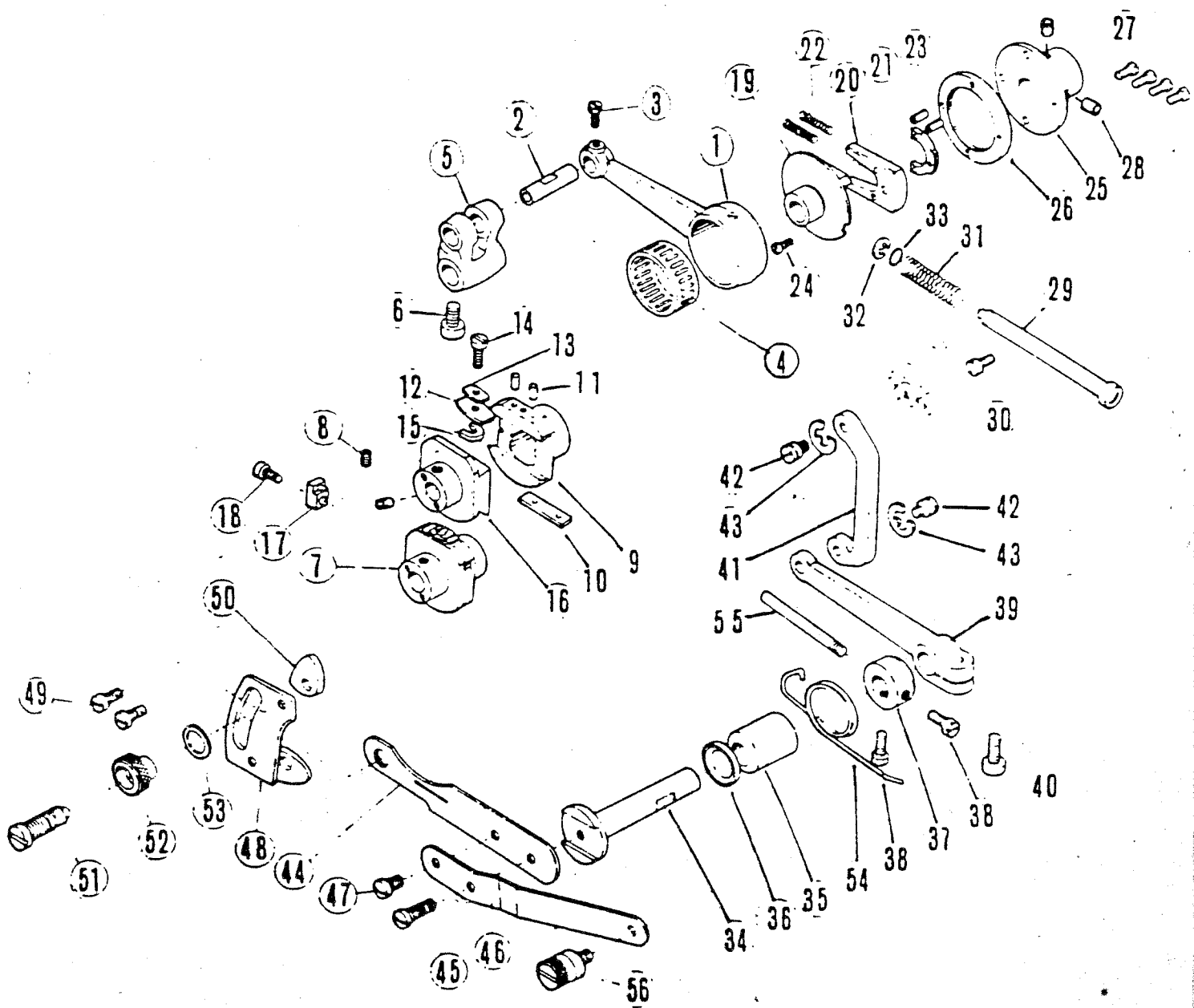
(1) CHAINSTITCH LOOPER MECHANISM

<u>REF. NO.</u>	<u>PART NUMBER</u>	<u>DESCRIPTION</u>	<u>QTY.</u>
1	615260	LOOPER DRIVE CRANK	1
2	619700	CLAMP SCREW	1
3	615280	LINK	1
4	615300	LINK PIN	2
5	618780	LINK PIN SCREW	2
6	618600	LINK PIN SCREW	1
7	611600	OIL WICK	2
8	615320	LOOPER DRIVE SHAFT	1
9	615820	BUSHING FRONT	1
10	612300	BUSHING FRONT OIL SEAT	1
11	612440	BUSHING REAR	1
12	614960	LOOPER AVOIDING LINK	1
13	619720	SCREW	2
14	614980	PIN	1
15	615000	BLOCK	1
16	619400	BLOCK SCREW	1
17	615020	THRUST WASHER	1
18	615040	COLLAR	1
19	618600	COLLAR SCREW	1
20	619620	NUT	1
21	612520	LOOPER LEVER	1
22	619360	CLAMP SCREW	1
23	613640	CLAMP SCREW WASHER	1
24	613760	LOOPER	1
25	610140	SCREW	1
26	613200	REGULATOR	1
27	610360	REGULATOR SCREW	2



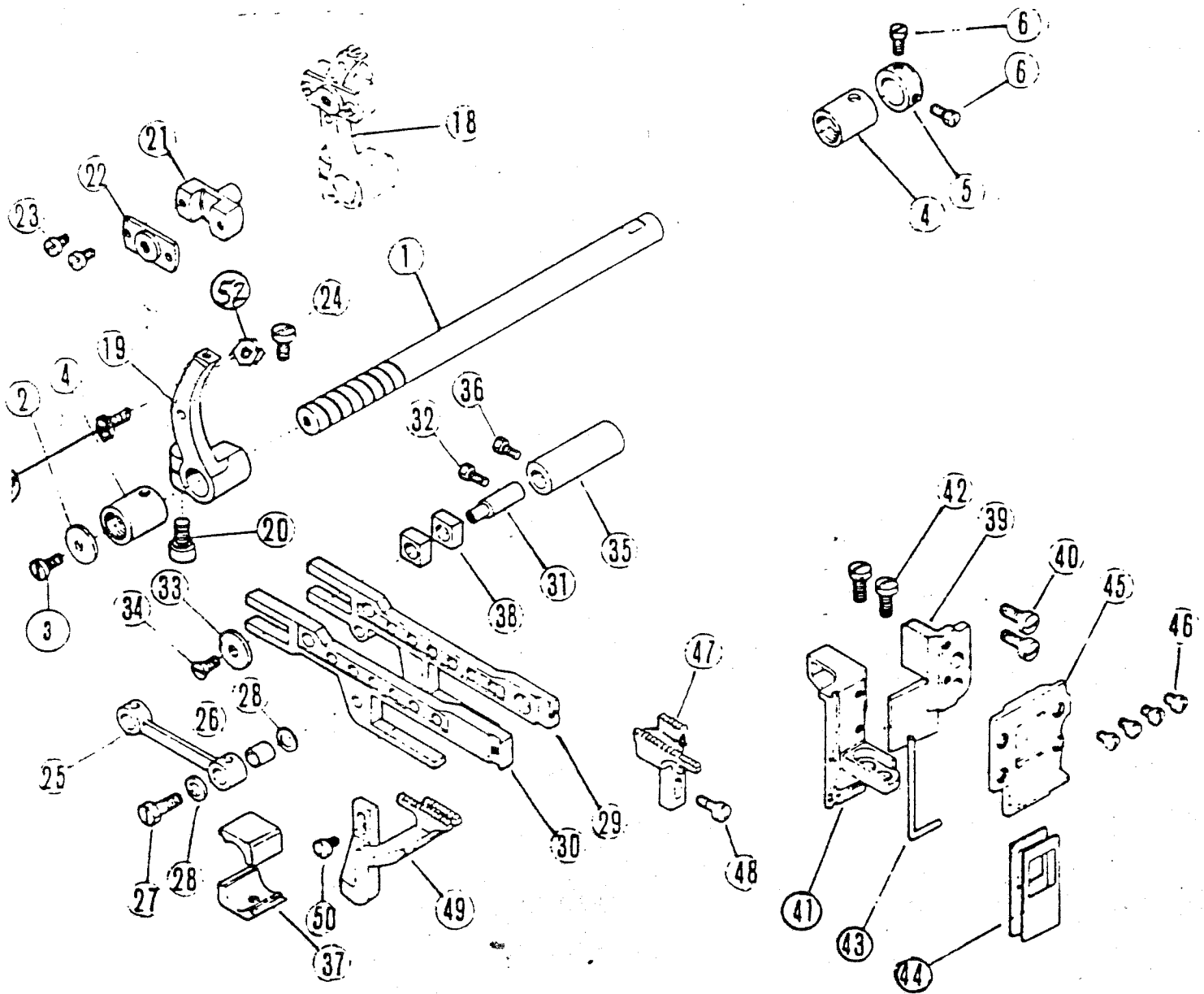
(2) CHAINSTITCH LOOPER MECHANISM.

<u>REF.</u> <u>NO.</u>	<u>PART NUMBER</u>	<u>DESCRIPTION</u>	<u>QTY.</u>
1	612460	LOOPER AVOIDING ACTION	1
2	615080	PIN	1
3	613840	PIN WASHER	1
4	618680	PIN NUT	1
5	611700	PIN NUT WASHER	1
6	613640	PIN NUT SPRING WASHER	1
10	612480	NEEDLE BEARING	1
11	613800	LOOPER AVOIDING CRANK	1
12	619700	CLAMP SCREW	1
13	614540	LOOPER AVOIDING SHAFT	1
14	614560	BUSHING (LEFT)	1
15	612500	BUSHING (RIGHT)	1
16	611100	THRUST COLLAR	2
17	618600	THRUST COLLAR SCREW	4
18	616480	ECCENTRIC COLLAR	1
19	619780	SCREW	2
20	618300	LOOPER THREAD TENSION NUT	1
21	610520	SPRING	1
22	611460	DISC	2
23	610500	POST	1
24	611920	GUIDE	1
25	612540	LOOPER THREAD TAKEUP	1
26	619400	SCREW	2
27	612560	GUIDE	1
28	612580	LOOPER THREAD GUIDE BRKT.	1
29	618340	SCREW (LONG)	1
30	618720	SCREW (SHORT)	1
31	613700	TAKEUP EYELET	2
32	618480	SCREW	2
33	616220	LOOPER THREAD GUIDE	1
34	618720	SCREW	1
35	612600	LOOPER THREAD TUBE	1
36	610420	SCREW	1



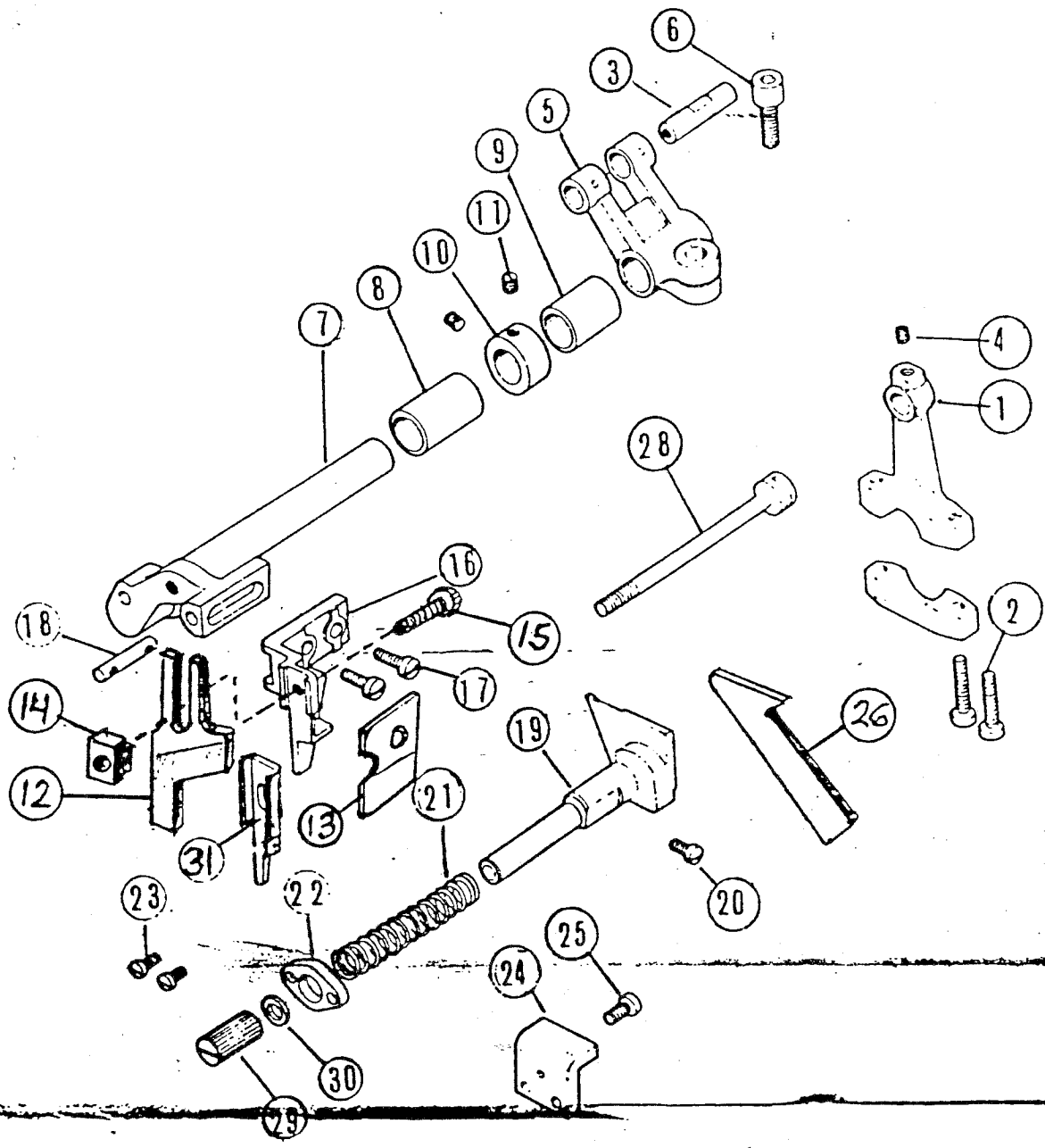
## (1) MAIN &amp; DIFFERENTIAL FEED MECHANISM

REF. NO.	PART NUMBER	DESCRIPTION	QTY.
1	612620	FEED DRIVE CONNECTION	1
2	614760	PIN	1
3	618600	PIN SCREW	1
4	612480	NEEDLE BEARING	1
5	1231	STITCH LENGTH	1
6	SHCS1/4-28X1/2	CLAMP SCREW	1
7	615640	FEED & LOOPER ECC. COMP.	1
8	619420	SCREW	2
9	615680	FEED ECCENTRIC	1
10	615340	FEED ECCENTRIC LINER	1
11	613740	FEED ECCENTRIC PIN	2
12	615360	SPRING PLATE (LARGE)	1
13	615380	SPRING PLATE (SMALL)	1
14	610160	SPRING PLATE SCREW	1
15	616300	SPRING PLATE SCR. WASHER	1
16	615660	LOOPER ECCENTRIC	1
17	616040	FEED ECCENTRIC STOPPER	1
18	610120	STOPPER SCREW	1
19	616320	FEED ECCENTRIC REGULATOR	1
*	616340	ASSY. REF. NOS. 20-24	1
20	616380	POSITION GEAR BRACKET	1
21	616360	POSITION GEAR	1
22	616400	SPRING	2
23	616760	PIN	2
24	619580	SCREW	1
*	616420	ASSY. REF. NOS. 25, 26, 27	1
25	616460	INTERNAL GEAR BRACKET	1
26	616440	INTERNAL GEAR	1
27	619680	SCREW	4
28	619420	SCREW	2
29	616500	FEED ECCENTRIC	1
30	619760	SCREW	1
31	616520	SPRING	1
32	616900	RETAINING RING	1
33	613320	'O' RING	1
34	614100	DIFFERENTIAL FEED SHAFT	1
35	615800	BUSHING	1
36	612300	OIL SEAL	1
37	614120	THRUST COLLAR	1
38	618600	THRUST COLLAR SCREW	2
39	612800	FEED SHAFT ARM	1
40	619700	CLAMP SCREW	1
41	612820	DIFFERENTIAL FEED LINK	1
42	619460	SCREW, SET WITH 611740	2
43	611740	SCREW RETAINING RING	2
44	614140	REGULATING LEVER (REAR)	1
45	618760	SCREW	1
46	614600	LEVER (FRONT)	1
47	610200	LEVER (FRONT) SCREW	1
48	612840	LEVER GUIDE	1
49	618760	SCREW	2
50	612860	LEVER LIFT GUIDE	2
51	619500	LEVER ADJUST SCREW	1
52	614480	LEVER ADJUST NUT	1
53	611940	LEVER ADJUST NUT WASHER	1
54	614160	REGULATING SPRING	1
55	614180	LATCH SCREW	1



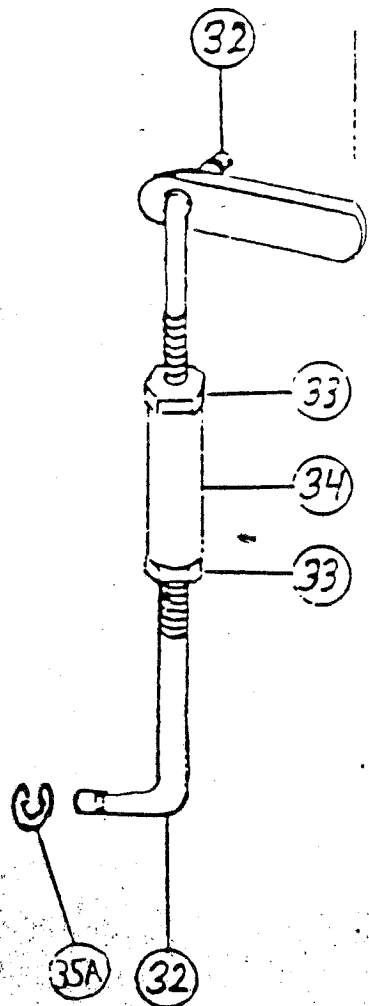
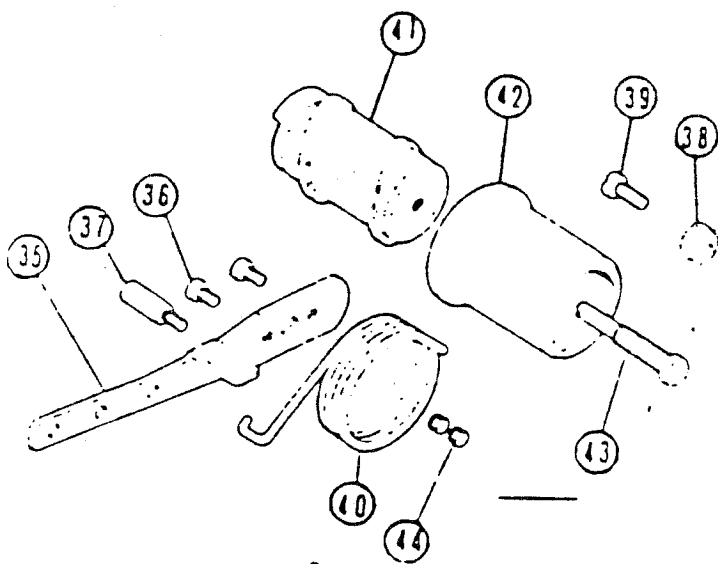
## (2) MAIN &amp; DIFFERENTIAL FEED MECHANISM

REF. NO.	PART NUMBER	DESCRIPTION	QTY.
1	614080	FEED BAR SHIFT	1
2	612640	THRUST WASHER	1
3	618340	THRUST WASHER SCREW	1
4	612320	BUSHING	2
5	611100	THRUST COLLAR	1
6	618600	THRUST COLLAR SCREW	2
18	615560	DIFF. FEED REG. (COMPLETE)	1
19	615580	SEGMENT	1
20	619700	SEGMENT CLAMP SCREW	1
21	615600	BLOCK	1
22	615620	BLOCK COVER	1
23	618420	BLOCK COVER SCREW	2
24	618860	BLOCK STOP SCREW	1
25	612720	CONNECTING LINK	1
26	612680	BUSHING	1
27	619140	BUSHING SCREW	1
28	612700	BUSHING SCREW WASHER	2
29	2885	FEED BAR	1
30	612740	DIFFERENTIAL FEED BAR	1
31	612760	FEED BAR HINGE PIN	1
32	618600	SCREW	1
33	613780	WASHER	1
34	619480	WASHER SCREW	1
35	612780	FEED BAR GUIDE BUSHING	1
36	617440	SCREW	1
37	614320	LIFT BLOCK (SPLIT)	1
38	611200	FEED BAR GUIDE BLOCK	2
39	615140	FEED BAR GUIDE (RIGHT)	1
40	619080	SCREW	2
41	615120	FEED BAR GUIDE	1
42	619080	SCREW	2
43	615200	GASKET	1
44	615160	FEED BAR OIL SPLASH GUARD	1
45	615180	INSERT PLATE	1
46	619600	SCREW	4
47	4636	MAIN FEED DOG	1
48	610100	SCREW	1
49	SP1173	DIFFERENTIAL FEED DOG	1
50	610120	SCREW	1
52	HN6-32	NUT	1
53	SHCS6-32 X 3/8	SCREW	1



UPPER AND LOWER KNIFE MECHANISM

REF. NO.	PART NUMBER	DESCRIPTION	QTY.
1	612880	UPPER KNIFE DRIVE CONN.	1
2	619200	CAP SCREW	2
3	612900	PIN	1
4	610440	PIN SCREW	1
5	613000	UPPER KNIFE DRIVE CRANK	1
6	619700	CLAMP SCREW	1
7A	1833	UPPER KNIFE LEVER	1
8	613020	BUSHING (LEFT)	1
9	613040	BUSHING (RIGHT)	1
10	611500	THRUST COLLAR	1
11	618460	THRUST COLLAR SCREW	2
12	4610	UPPER KNIFE-CARB. TIPPED	1
13	1170	TRIM SHIELD	1
14	4591	T-NUTS	1
15	SHCS6-32 X 1/2	SCREW	1
16	SP616260	UPPER KNIFE CLAMP	1
17	610100	SCREW	2
18	613060	PIN	1
19	616280	LOWER KNIFE HOLDER	1
20	618340	SCREW	1
21	613080	SPRING	1
22	613100	SPRING SEAT	1
23	618740	SPRING SEAT SCREW	2
24	613120	GUIDE	1
25	610100	GUIDE SCREW	1
26	LK517	LOWER KNIFE	1
28	613160	CLAMP STUD	1
29	619320	CLAMP STUD NUT	1
30	610780	CLAMP STUD NUT WASHER	1
31	1799	UP. KNIFE SPACER-516 ONLY	1

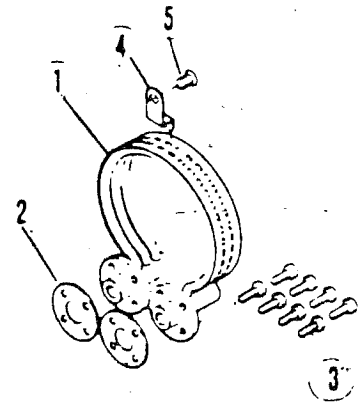
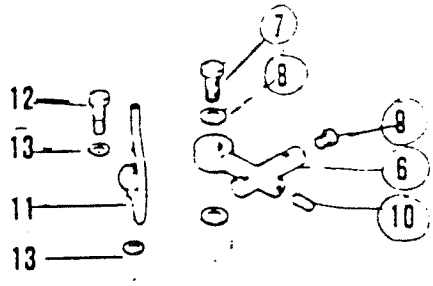


UPPER AND LOWER KNIFE MECHANISM

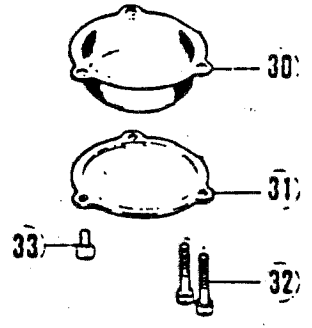
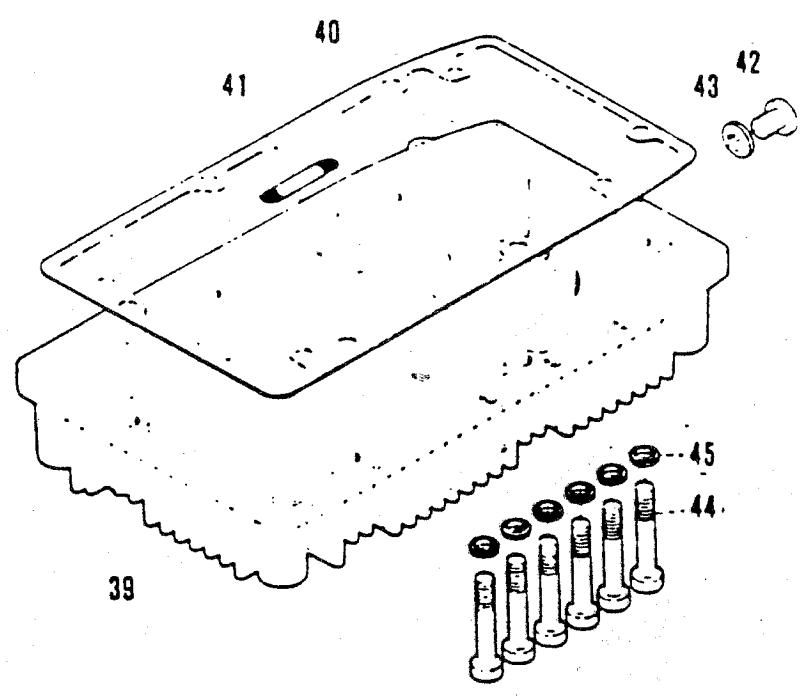
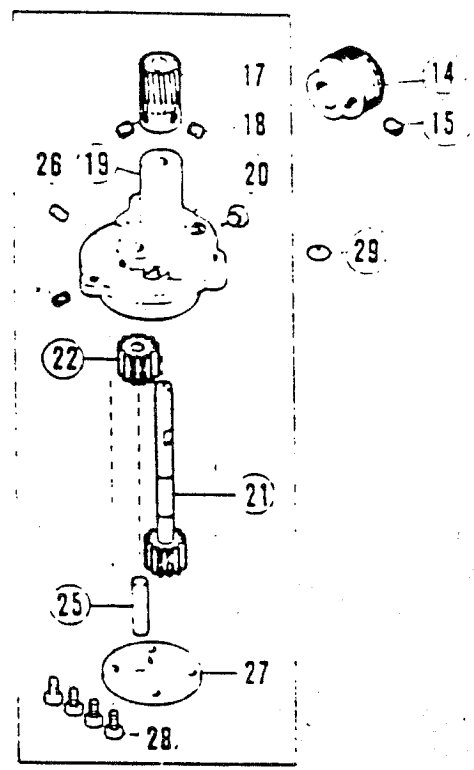
REF. NO.	PART NUMBER	DESCRIPTION	QTY.
1	612880	UPPER KNIFE DRIVE CONN.	1
2	619200	CAP SCREW	2
3	612900	PIN	1
4	610440	PIN SCREW	1
5	613000	UPPER KNIFE DRIVE CRANK	1
6	619700	CLAMP SCREW	1
7A	1833	UPPER KNIFE LEVER	1
8	613020	BUSHING (LEFT)	1
9	613040	BUSHING (RIGHT)	1
10	611500	THRUST COLLAR	1
11	618460	THRUST COLLAR SCREW	2
12	4610	UPPER KNIFE-CARB. TIPPED	1
13	1170	TRIM SHIELD	1
14	4591	T-NUTS	1
15	SHCS6-32 X 1/2	SCREW	1
16	SP616260	UPPER KNIFE CLAMP	1
17	610100	SCREW	2
18	613060	PIN	1
19	616280	LOWER KNIFE HOLDER	1
20	618340	SCREW	1
21	613080	SPRING	1
22	613100	SPRING SEAT	1
23	618740	SPRING SEAT SCREW	2
24	613120	GUIDE	1
25	610100	GUIDE SCREW	1
26	LK517	LOWER KNIFE	1
28	613160	CLAMP STUD	1
29	619320	CLAMP STUD NUT	1
30	610780	CLAMP STUD NUT WASHER	1
31	1799	UP. KNIFE SPACER-516 ONLY	1

PRESSER FOOT LIFT MECHANISM

<u>REF. NO.</u>	<u>PART NUMBER</u>	<u>DESCRIPTION</u>	<u>QTY.</u>
32	1214	CONNECTOR	2
33	HN8-32	NUT	2
34	2219	KEYSTONE CONNECTOR	1
35	613220	FOOT LIFT LEVER	1
35A	5133-15	RETAINER	2
36	610180	SCREW	2
37	619180	STOP SCREW	1
38	611840	REGULATOR	1
39	618760	REGULATOR SCREW	1
40	613240	SPRING	1
41	614680	FOOT LIFT CAM	1
42	614700	BUSHING	1
43	615960	REGULATING SCREW STUD	1
44	618160	STOP SCREW	2

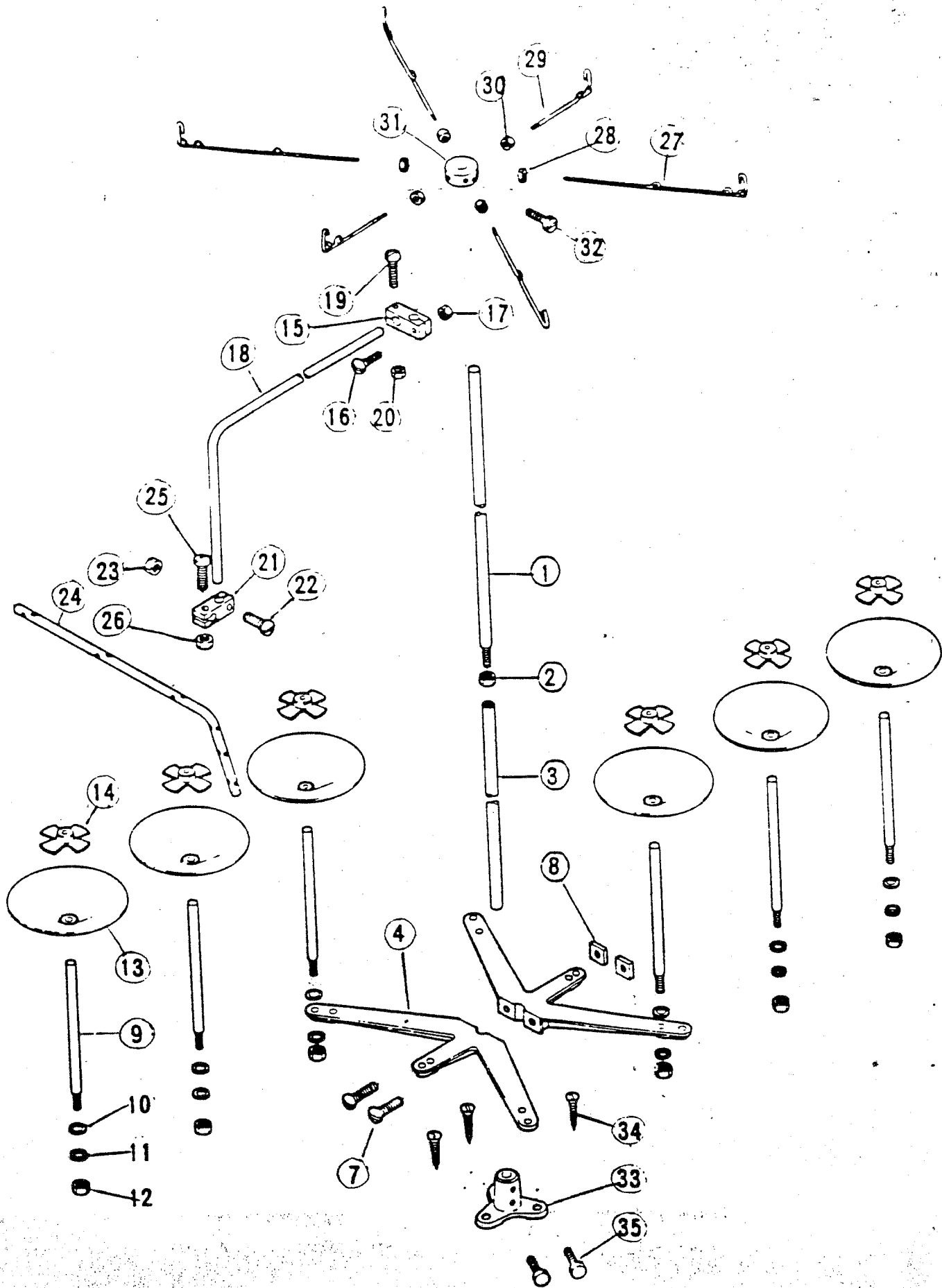


16



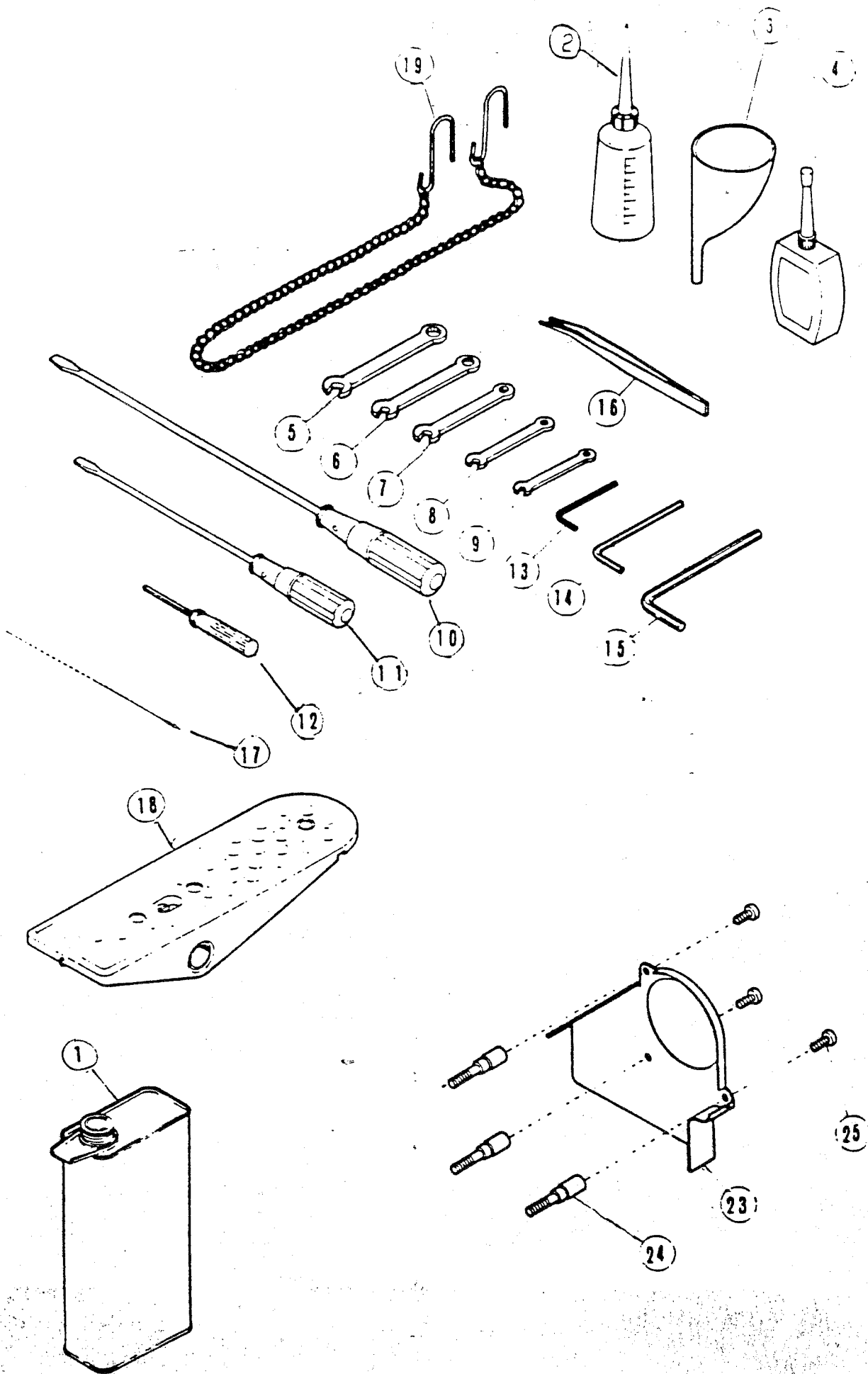
## LUBRICATING MECHANISM

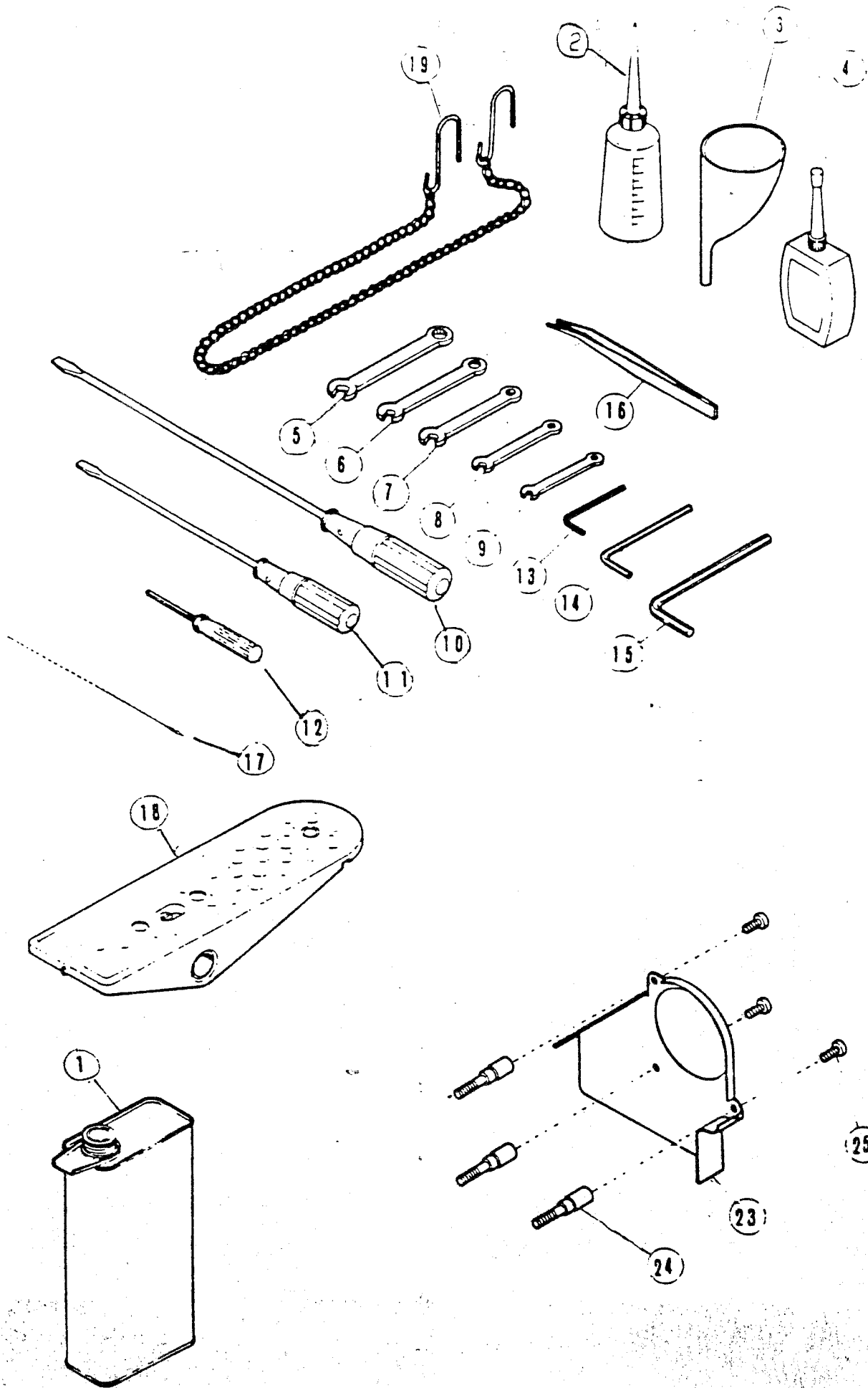
REF. NO.	PART NUMBER	DESCRIPTION	QTY.
1	613380	COOLER ASSEMBLY	1
2	613420	GASKET	2
3	610100	SCREW	8
4	613400	CLAMP	1
5	618260	SCREW	1
6	613440	DISTRIBUTOR	1
7	610860	OIL SPLASH SCREW	1
8	610820	WASHER	2
9	611360	SCREW	1
10	611980	PLUG	1
11	613460	OIL SPLASH PIPE COMPLETE	1
12	611520	OIL SPLASH SCREW	1
13	611540	WASHER	2
14	613340	WORM	1
15	611616	SCREW	1
16	613880	GEAR PUMP COMPLETE	1
17	613360	WORM WHEEL	1
18	618460	SCREW	2
19	613260	CASING COMPLETE	1
20	618900	SCREW	1
21	617265	PUMP GEAR (RIGHT)	1
22	611320	PUMP GEAR (LEFT)	1
25	613300	PUMP GEAR SHAFT	1
26	610440	SCREW	2
27	611280	PLATE	1
28	618740	SCREW	1
29	613320	'O' RING	1
30	611380	FILTER COMPLETE	1
31	611400	FRAME/FILTER	1
32	618660	SCREW	2
33	618740	SCREW	1
39	615500	OIL RESERVOIR	1
40	615980	GASKET	1
41	611465	OIL PAN SCREEN	1
42	618840	SCREW	1
43	611600	WASHER	1
44	618960	BOLT	6
45	614300	WASHER	6



THREAD STAND

<u>REF. NO.</u>	<u>PART NUMBER</u>	<u>DESCRIPTION</u>	<u>QTY.</u>
1	617460	THREAD STAND UPPER ROD	1
2	617480	NUT	1
3	617500	THREAD STAND LOWER ROD	1
4	617520	SPOOL PIN BRACKET	2
6	617560	SPOOL PIN BRACKET	1
7	617580	CLAMP SCREW	2
8	617620	CLAMP SCREW NUT	2
9	617640	SPOOL PIN	6
10	617660	WASHER	6
11	617680	NUT SPRING WASHER	6
12	617700	NUT	6
13	617720	SPOOL TRAY	6
14	617740	SPOOL RETAINING FIN	6
15	617760	ROD BRACKET	1
16	617780	CLAMP SCREW	1
17	617800	CLAMP SCREW NUT	1
18	618180	THREAD GUIDE BAR ROD	1
19	617780	SCREW	1
20	617800	SCREW NUT	1
21	617820	RETAINING BLOCK	1
22	617780	CLAMP SCREW	1
23	617800	CLAMP SCREW NUT	1
24	618240	THREAD GUIDE BAR	1
25	617780	CLAMP SCREW	1
26	617800	CLAMP SCREW NUT	1
27	617840	THREAD GUIDE WIRE (LONG)	4
28	617860	LOCK NUT	4
29	617880	THREAD GUIDE WIRE (SHORT)	2
30	617860	LOCK NUT	2
31	617900	WIRE HOLDER	1
32	617900	SCREW	1
33	617920	THREAD STAND BASE	1
34	617940	WOOD SCREW	3
35	617960	ROD SCREW	2
36	618100	THREAD STD COMPLETE	1





ACCESSORIES

<u>REF. NO.</u>	<u>PART NUMBER</u>	<u>DESCRIPTION</u>	<u>QTY.</u>
1	610340	OIL CONTAINER	1
2	610320	OILER	1
3	610380	OIL FUNNEL	1
4	610580	LUBRICANT CONTAINER	1
5	618080	WRENCH (9.5MM)	1
6	618060	WRENCH (8mm)	1
7	618040	WRENCH (7mm)	1
8	618020	WRENCH (6mm)	1
9	618000	WRENCH (5mm)	1
10	610260	SCREWDRIVER (LARGE)	1
11	610280	SCREWDRIVER (MEDIUM)	1
12	610600	ALLEN WRENCH	1
13	610640	ALLEN KEY (3.17mm)	1
14	610720	ALLEN KEY (4.76mm)	1
16	610300	TWEEZERS	1
17	610460	THREADING WIRE	1
18	617980	THREADLE	1
19	610240	THREADLE CHAIN	1
23	614720	BELT GUARD	1
24	614740	FIXING SCREW	3
25	618740	SCREW	3

PART NUMBER	PAGE	REF. NO.	PART NUMBER	PAGE	REF. NO.
10006	3	50	4845	3	12
1156	9	7	5133-15	31	35A
1158	9	53	610020	17	7
1160A	15	56	610020	19	5
1170	29	13	610040	17	3
1186	3	2	610040	19	3
1207	9	54	610060	15	27
1214	31	32	610080	11	22
1223	7	24	610100	17	32
1231	25	5	610100	29	17
1253	15	53	610100	29	25
1271	3	17	610100	27	48
1706	3	13	610100	33	3
1712	3	23	610120	25	18
1718	3	27	610120	19	21
1720	3	14	610120	27	50
1724	3	20	610120	13	24
1725	3	21	610135	15	50
1728	3	6	610140	21	25
1735	7	1	610140	9	20
1737	3	4	610160	25	14
1799	29	31	610180	9	22
1833	29	7A	610180	31	36
1912	3	16	610200	25	47
2033	3	38	610200	7	17
2219	31	34	610220	9	6
2707	15	34	610240	37	19
2885	27	29	610260	37	10
4013	9	1A	610280	37	11
4412	9	18	610300	37	16
4452	3	41	610320	37	2
4512	3	11	610340	37	1
4512	15	14A	610360	21	27
4513	3	15	610380	37	3
4581	17	17	610400	13	25
4586	3	52	610400	9	23
4586	3	32	610420	15	22
4588	13	5	610420	23	36
4588	15	6	610440	33	26
4589	3	28	610440	29	4
4590	3	30	610460	37	17
4591	29	14	610500	23	23
4594	3	51	610520	23	21
4597	15	55	610540	9	37
4610	29	12	610560	15	57
4615	5	5A	610580	37	4
4619	3	31	610600	37	12
4620	3	3	610640	37	13
4621	3	1	610660	19	33
4622	3	9	610680	9	10
4623	3	8	610700	17	36
4636	27	47	610720	37	14
4718	15	17	610740	15	23
4731	3	36	610760	15	46
4737	15	58	610780	29	30
4740	11	34	610820	33	8

PART NUMBER	PAGE	REF. NO.	PART NUMBER	PAGE	REF. NO.
610860	33	7	611760	7	13
610900	7	18	611820	9	4
610920	9	25	611840	31	38
610960	15	18	611860	9	5
610980	5	10	611880	15	49
610980	5	3	611920	19	30
611000	5	24	611920	23	24
611040	13	56	611940	25	53
611040	13	47	611960	17	50
611060	9	41	611980	33	10
611060	9	39	612000	5	17
611080	9	43	612020	5	20
611100	27	5	612040	11	25
611100	23	16	612060	11	24
611120	13	48	612080	11	21
611140	9	42	612100	11	16
611140	9	40	612120	11	15
611160	17	6	612140	11	14
611160	19	4	612180	11	12
611180	19	25	612200	11	5
611200	27	38	612220	11	1
611220	13	12	612260	15	2
611220	15	9	612260	11	6
611260	7	14	612260	13	1
611280	33	27	612280	17	4
611320	33	22	612300	17	14
611360	33	9	612300	21	10
611380	33	30	612300	25	36
611400	33	31	612300	19	15
611460	13	50	612320	27	4
611460	19	27	612320	19	16
611460	23	22	612360	17	29
611465	33	41	612380	17	28
611480	11	17	612400	19	10
611500	29	10	612400	17	9
611520	33	12	612440	21	11
611540	33	13	612440	17	15
611560	17	20	612460	23	1
611580	11	20	612480	25	4
611600	21	7	612480	23	10
611600	33	43	612500	23	15
611600	15	20	612520	21	21
611616	33	15	612540	23	25
611620	3	49	612560	23	27
611620	15	15	612580	23	28
611620	19	8	612600	23	35
611620	17	5	612620	25	1
611640	19	13	612640	17	10
611640	17	8	612640	27	2
611640	19	6	612680	27	26
611640	17	12	612700	27	28
611640	9	51	612720	27	25
611680	5	21	612740	27	30
611700	23	5	612760	27	31
611720	15	45	612780	27	35
611740	25	43	612800	25	39

PART NUMBER	PAGE	REF. NO.	PART NUMBER	PAGE	REF. NO.
612820	25	41	614100	25	34
612840	25	48	614120	25	37
612860	25	50	614140	25	44
612880	29	1	614160	25	54
612900	29	3	614180	25	55
613000	29	5	614200	13	18
613020	29	8	614220	13	20
613040	29	9	614240	13	14
613060	29	18	614260	11	26
613080	29	21	614280	19	9
613100	29	22	614300	5	15
613120	29	24	614320	33	45
613160	29	28	614340	27	37
613200	21	26	614360	7	23
613220	31	35	614360	5	16
613240	31	40	614360	5	13
613260	33	19	614400	17	*
613300	33	25	614420	9	46
613320	33	29	614440	9	49
613320	25	33	614480	25	52
613340	33	14	614500	9	45
613360	33	17	614520	11	28
613380	33	1	614540	23	13
613400	33	4	614560	23	14
613420	33	2	614580	11	30
613440	33	6	614600	25	46
613460	33	11	614620	19	31
613490	9	44	614640	17	48
613500	11	8	614660	17	51
613520	7	16	614680	31	41
613540	9	34	614700	31	42
613560	9	36	614720	37	23
613580	5	4	614740	37	24
613600	17	27	614760	25	2
613640	21	23	614760	15	4
613640	23	6	614760	13	3
613640	19	19	614780	13	23
613660	19	11	614800	13	22
613680	11	32	614820	9	16
613700	23	31	614840	9	17
613740	25	11	614880	9	21
613760	21	24	614900	9	24
613780	27	33	614920	9	27
613800	23	11	614940	9	3
613840	23	3	614960	21	12
613840	11	27	614980	21	14
613880	33	16	615000	21	15
613900	15	24	615020	21	17
613920	15	28	615040	21	18
613960	9	30	615060	9	32
613980	13	17	615080	23	2
614000	19	17	615100	17	26
614020	17	35	615120	27	41
614040	15	42	615140	27	39
614060	15	52	615160	27	44
614080	27	1	615180	27	45

PART NUMBER	PAGE	REF. NO.	PART NUMBER	PAGE	REF. NO.
615200	27	43	616480	23	18
615220	17	31	616500	25	29
615240	19	7	616520	25	31
615260	21	1	616540	7	2
615280	21	3	616600	15	26
615300	21	4	616620	17	16
615320	21	8	616640	7	10
615340	25	10	616660	17	46
615360	25	12	616680	13	45
615380	25	13	616680	19	23
615400	13	8	616700	19	24
615400	15	13	616700	13	46
615420	13	9	616720	13	51
615420	15	11	616720	19	28
615440	15	1	616740	13	49
615440	13	11	616740	19	26
615460	13	10	616760	25	23
615460	15	12	616770	11	9
615480	17	21	616775	11	11
615500	33	39	616800	9	15
615540	11	10	616820	9	13
615560	27	18	616820	7	22
615580	27	19	616840	13	55
615600	27	21	616860	19	22
615620	27	22	616880	13	44
615640	25	7	616900	25	32
615660	25	16	617060	17	34
615680	25	9	617080	17	33
615760	17	13	617140	5	1
615780	19	14	617160	7	12
615800	25	35	617200	15	30
615820	21	9	617220	15	29
615860	9	11	617240	15	21
615880	13	54	617265	33	21
615960	31	43	617280	15	32
615980	33	40	617300	15	33
616000	17	25	617340	15	47
616040	25	17	617360	5	22
616060	9	14	617380	5	11
616080	9	52	617400	15	59
616100	7	4	617420	15	25
616120	7	5	617440	27	36
616140	11	18	617460	35	1
616160	19	1	617480	35	2
616160	17	1	617500	35	3
616220	23	33	617520	35	4
616280	29	19	617540	19	12
616300	25	15	617540	17	11
616320	25	19	617560	35	6
616340	25	*	617580	35	7
616360	25	21	617600	17	2
616380	25	20	617600	19	2
616400	25	22	617620	35	8
616420	25	*	617640	35	9
616440	25	26	617660	35	10
616460	25	25	617680	35	11

PART NUMBER	PAGE	REF. NO.	PART NUMBER	PAGE	REF. NO.
617700	35	12	618520	11	2
617720	35	13	618540	11	3
617740	35	14	618560	13	57
617760	35	15	618560	19	29
617780	35	25	618600	21	6
617780	35	19	618600	27	6
617780	35	16	618600	21	19
617780	35	22	618600	27	32
617800	35	23	618600	23	17
617800	35	26	618600	25	38
617800	35	20	618600	13	13
617800	35	17	618600	17	30
617820	35	21	618600	25	3
617840	35	27	618600	17	22
617860	35	30	618600	7	15
617860	35	28	618640	9	47
617880	35	29	618640	9	38
617900	35	32	618660	33	32
617900	35	31	618660	9	31
617920	35	33	618660	9	28
617940	35	34	618680	23	4
617960	35	35	618700	13	15
617980	37	18	618720	23	30
618000	37	9	618720	23	34
618020	37	8	618740	33	33
618040	37	7	618740	11	13
618060	37	6	618740	29	23
618080	37	5	618740	37	25
618100	35	36	618740	33	28
618120	17	47	618740	7	6
618120	19	32	618760	25	45
618120	9	50	618760	25	49
618140	17	52	618760	31	39
618160	31	44	618780	21	5
618180	35	18	618800	13	53
618200	17	49	618820	9	29
618240	35	24	618840	33	42
618260	33	5	618860	27	24
618280	7	21	618880	13	52
618300	23	20	618900	33	20
618320	13	26	618920	9	26
618340	29	20	618940	9	33
618340	27	3	618960	33	44
618340	7	3	618980	9	12
618340	23	29	619000	5	7
618340	9	8	619040	5	23
618340	7	11	619060	9	48
618380	13	19	619080	27	40
618400	9	35	619080	27	42
618420	27	23	619120	13	16
618420	13	21	619140	27	27
618440	15	31	619160	7	19
618460	29	11	619180	31	37
618460	33	18	619200	15	3
618480	23	32	619200	13	2
618500	5	2	619200	29	2

PART NUMBER	PAGE	REF. NO.	PART NUMBER	PAGE	REF. NO.
619220	13	4	PSM-130	15	38
619220	15	5	SHCS1/4-28X1/2	25	6
619240	5	6	SHCS4-40 X 3/8	3	25
619260	11	4	SHCS5-40 X 1/4	3	32A
619280	17	18	SHCS5-40 X 1/4	3	34
619300	11	23	SHCS5-44 X 3/8	3	35
619320	29	29	SHCS6-32 X 1/2	29	15
619340	11	7	SHCS6-32 X 1/2	3	53
619360	21	22	SHCS6-32 X 1/2	3	18
619360	19	18	SHCS6-32 X 3/8	27	53
619380	17	19	SHCS6-32 X 3/8	13	40
619400	3	11A	SHCS6-32 X 5/8	3	54
619400	23	26	SHCS8-32 X 1/2	3	24
619400	15	41	SHCS8-32 X 1/2	3	7
619400	15	19	SHCS8-32 X 1/8	3	5
619400	21	16	SHCS8-32X1 1/2	11	35
619420	15	16	SHCS8-32X1 1/8	15	54
619420	25	28-	SP1173	27	49
619420	25	8	SP1196	13	41
619440	15	60	SP1197	13	39
619440	11	19	SP1198	13	38
619460	25	42	SP1708	3	26
619480	27	34	SP1709	3	19
619500	25	51	SP2370	3	33
619520	11	33	SP616260	29	16
619520	15	10	X-1002	19	20
619540	5	14			
619580	25	24			
619600	27	46			
619620	21	20			
619640	15	44			
619680	25	27			
619700	21	2			
619700	29	6			
619700	15	7			
619700	25	40			
619700	23	12			
619700	13	7			
619700	27	20			
619720	21	13			
619760	25	30			
619780	23	19			
619800	7	20			
619840	5	12			
629860	15	48			
BHS10-32 X 3/8	3	39			
DP 3/16 X 3/4	3	40			
FW #6	3	29			
HB10-32 X 1/2	3	37			
HHB10-32 X 1/2	13	42			
HLSS4-40 X 5/64	3	16A			
HN6-32	27	52			
HN8-32	31	33			
LK517	29	26			
PHMS1/4-28X3/4	3	22			
PSM-130	15	39			

P110, folder ①

CB5½, cone bearing ②

1249, shaft ①

6072K21, ball joint ①

9491T14, hook ①

1248, stand-off ②

