



---

# **PARTS BOOK**

---

## **KM-815/815C**

High Post Bed, Single Needle Drop  
Feed Lock Stitch Machine

## **KM-825/825C**

High Post Bed, Twin Needle Drop  
Feed Lock Stitch Machine

**PME-120921**

# Information

## A. Parts Book 구성 Structure of Part Book

① **A** Arm, Bed & Machine Body Mechanism  
압, 베드 및 외장품 관계

④ ⑤ ⑥ ⑦ ⑧ ⑨

Ref. No.	Parts No.	Note	Name of Parts	비고	Q'ty	Assembly No.
A-1	01-030C-001		Arm	압대	1	
A-2	01-030C-002		Bed	베드	1	
A-3	01-030C-003		Face Plate	면판	1	
A-4	01-030C-004		Face Plate Cover	면판 피복판	1	
A-5	01-030C-005		Face Plate Cover	면판 피복판	1	
A-6	01-030C-006		Support Cap For Face Plate	면판 피복판 지지캡	2	
A-7	01-030C-007		Coil Spring	코일 스프링	1	
A-8	01-030C-008		Faceplate Lower Cover	면판 하부 피복판	1	
A-9	01-030C-009		Faceplate Upper Cover	면판 상부 피복판	1	
A-10	01-030C-010		Faceplate	면판	1	
A-11	01-030C-011		Face Cover(L)	면판 피복판(L)	1	
A-12	01-030C-012		Face Cover(R)	면판 피복판(R)	1	
A-13	01-030C-013		Faceplate	면판	1	
A-14	01-030C-014		Face Cover	면판 피복판	1	
A-15	01-030C-015		Face Cover	면판 피복판	1	
A-16	01-030C-016		Faceplate	면판	1	
A-17	01-030C-017		Faceplate with Three Holes	면판 삼구형	1	
A-18	01-030C-018		Faceplate	면판	1	
A-19	01-030C-019		Faceplate	면판	1	
A-20	01-030C-020		Faceplate	면판	1	
A-21	01-030C-021		Faceplate	면판	1	
A-22	01-030C-022		Faceplate	면판	1	
A-23	01-030C-023		Faceplate	면판	1	
A-24	01-030C-024		Faceplate	면판	1	
A-25	01-030C-025		Faceplate	면판	1	
A-26	01-030C-026		Faceplate	면판	1	
A-27	01-030C-027		Faceplate	면판	1	
A-28	01-030C-028		Faceplate	면판	1	
A-29	01-030C-029		Faceplate	면판	1	
A-30	01-030C-030		Faceplate	면판	1	
A-31	01-030C-031		Faceplate	면판	1	
A-32	01-030C-032		Faceplate	면판	1	
A-33	01-030C-033		Faceplate	면판	1	
A-34	01-030C-034		Faceplate	면판	1	
A-35	01-030C-035		Faceplate	면판	1	
A-36	01-030C-036		Faceplate	면판	1	
A-37	01-030C-037		Faceplate	면판	1	
A-38	01-030C-038		Faceplate	면판	1	
A-39	01-030C-039		Faceplate	면판	1	
A-40	01-030C-040		Faceplate	면판	1	
A-41	01-030C-041		Faceplate	면판	1	
A-42	01-030C-042		Faceplate	면판	1	
A-43	01-030C-043		Faceplate	면판	1	
A-44	01-030C-044		Faceplate	면판	1	
A-45	01-030C-045		Faceplate	면판	1	
A-46	01-030C-046		Faceplate	면판	1	
A-47	01-030C-047		Faceplate	면판	1	
A-48	01-030C-048		Faceplate	면판	1	
A-49	01-030C-049		Faceplate	면판	1	
A-50	01-030C-050		Faceplate	면판	1	

Note: P=Plastic Material(플라스틱), M=Metallum Material(합금), PA=Phenolite Material(페놀이트 합금)  
L=Light Material(경질플라스틱), H=Hard Material(중질플라스틱), SL=Large Slabbe Material(대형 합금)

- ①: 관계 별 고유 코드  
Unique code by mechanism
- ②: 관계 별 고유 명칭  
Unique name by mechanism
- ③: 관계도  
Explode view
- ④ Ref.No.: 파트별 고유 식별 번호  
Unique identification number by part
- ⑤ Parts No.: 고유 제품 코드  
Unique Product code

- ⑥ Note: 공지사항 표기 및 메모  
Refers to notice and memo
- ⑦ 품 명: 파트의 고유 품명  
Name of Part: Unique name of parts
- ⑧ Q'ty: 파트의 수량  
The number of parts
- ⑨ Assembly no.: 조(조) 파트의 식별 번호  
Unique identification number by set part

Ex)

구분 Category	Code	비고 remarks
구 부품 Old part	01-030C-1230	
신 부품 New Part	AS-000000-00	조(조) 파트 Set parts
	GP-000000-00	기구적 파트 Instrumental parts
	EP-000000-00	전기적 파트 Electrical parts

## Warning

1. 조에 속한 파트는 개별 조립 시 제품의 파손 또는 재봉 불량 발생될 수 있어 해당 파트에 대한 주문 시에는 조 품목으로만 구입이 가능합니다.
  2. 본 책자는 Parts Book으로 제작되었으므로 매뉴얼로 사용 불가합니다.
  3. 사전 예고 없이 사양이 변경 될 수도 있습니다.
- 
1. The parts classified as ass'y items may cause damage to the machine or bad sewing when they are separately assembled. Hence, when they are ordered, they can be purchased as ass'y items only.
  2. This is a parts book. It cannot be used as a manual.
  3. Parts are Subject to change in Design Without Prior Notice.

## Note

- 썬스타 제품의 부품은 아래 인터넷주소로 접속하시어 신청할 수 있습니다.  
<http://www.sunstarcs.com>
  - 가입된 회원께서는 썬스타 포탈 사이트에 로그인후 필요한 부품을 신청할 수 있습니다.
  - 부품관리-발주관리-발주등록 항목에서 부품번호와 신청수량을 입력하여 등록하시면 발주가 됩니다.
  - 부품번호를 모르는 경우 파츠북 조회를 클릭하시고 사용하는 기종을 검색하여 선택하시면 해당 기종의 파츠북을 조회할 수 있습니다.
  - 파츠북은 관계별로 구분되어 있으며 관계를 알고 있다면 부품 찾기가 용이합니다.
- 
- You can make an order for the parts of Sunstar machine to connect internet address.  
<http://www.sunstarcs.com>
  - You can request for parts you want after login if you are a registered member.
  - In parts Management - Order Management - Order Registration entry, you can place an order by entering the part number and quantity.
  - If you don't know the parts number, click the parts book menu bar.  
In a download list, you can read parts book by searching model you use.
  - This parts book is classified by the mechanism, therefore you can find part easily.  
**From the library of Superior Sewing Machine & Supply LLC - [www.supsew.com](http://www.supsew.com)**

# CONTENTS

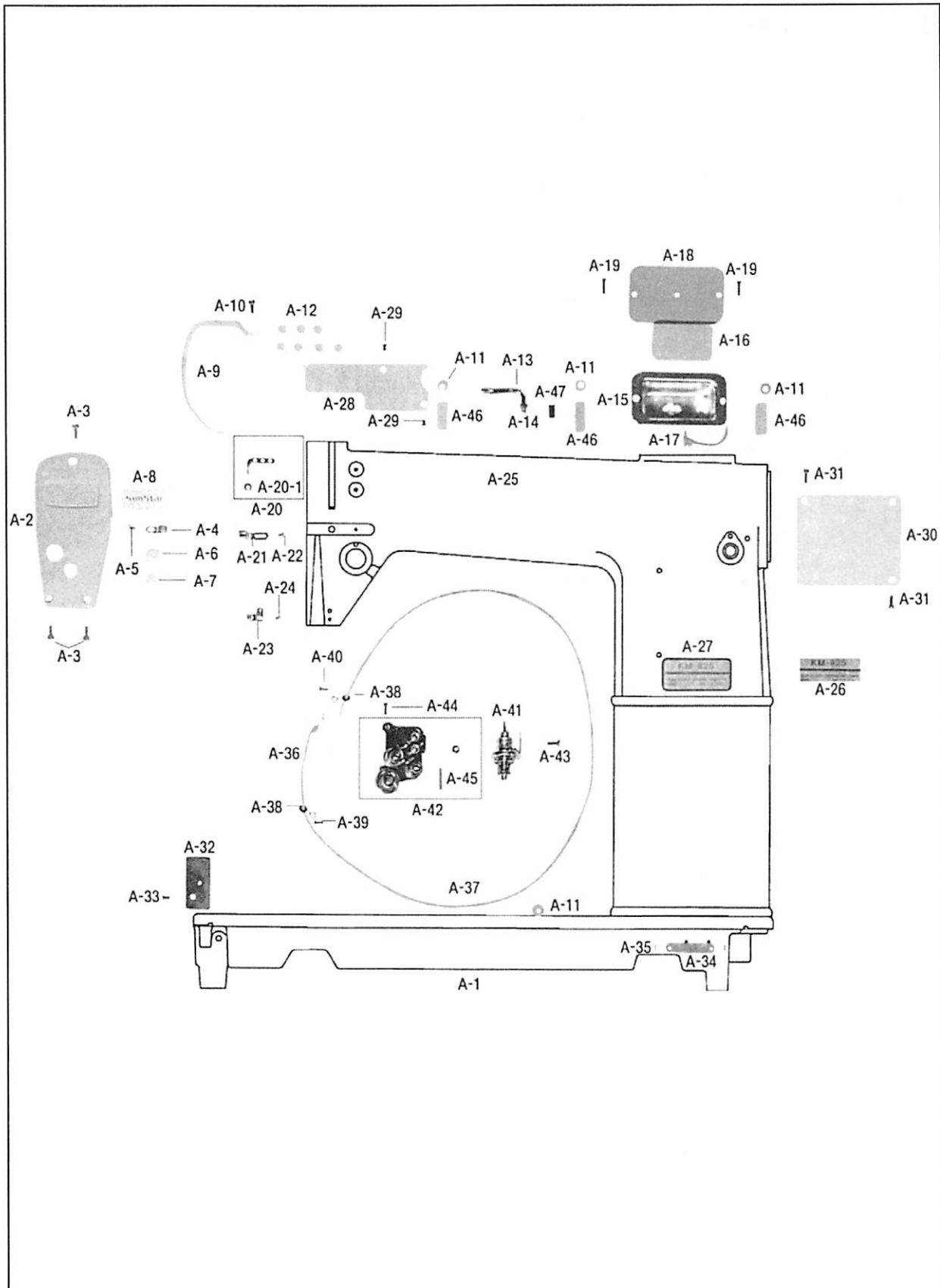
## 목 차

A	Machine Body & Threading Mechanism 외장 및 실장력 조절 관계	6
B	Upper Shaft & Needle Bar Mechanism 상축 & 바늘대 관계	8
C	Presser Foot & Knee Lifting Mechanism 노루발 및 무릎올림 관계	10
D	Feed Mechanism 피이드 관계	12
E	Upright Shaft & Lower Shaft Mechanism 세운축 및 하축 관계	16
F	Post Mechanism 포스트 관계	18
G	Accessories Mechanism 액세서리 관계	22
H	Hook Cover (Hinge Type) Mechanism (KM-815C/825C) 경첩식 훅 커버 부착 사양 관계 (KM-815C/825C)	24
I	Gauge Parts 게이지 파트	26
	Index 인덱스	28



# Machine Body & Threading Mechanism

외장 & 실장력 조절 관계





Ref. No.	Parts No.	Note	Name of Parts	품 명	Q'ty		Applied Period
					KM-815	KM-825	
A-1	AS-008952-00		Arm, Bed Base, Bed (Ass'y)	아암, 베드(조)	1Set	1Set	Aug.08.08
	01-001A-8150		Arm, Bed Base, Bed (Ass'y)	아암, 베드(조)	1Set	1Set	
A-2	01-005A-8150		Face Plate	면판	1	1	
A-3	SC-0174-1230		Screw (11/64"n=40)	흡불이 납작 작은나사(11/64"n=40)	3	3	
A-4	01-031C-146L		Thread Guide For A-2	면판 실걸이	1	1	
A-5	SC-0120-1230		Screw (9/64"n=40)	흡불이 냄비 작은나사(9/64"n=40)	1	1	
A-6	01-144R-1230		Rubber Plug For A-2(Large)	면판 고무마개 (대)	1	1	
A-7	01-110R-1230		Rubber Plug For A-2(Small)	면판 고무마개 (중)	1	1	
A-8	01-038M-2500		Name Plate	면판 상표 마크	1	1	
A-9	01-109A-8150		Thread Take-Up Cover	실채기 커버	1	1	
A-10	SC-0502-2302		Screw (11/64"n=40)	흡불이 납작 작은나사(11/64"n=40)	1	1	
A-11	01-007R-8130		Oil Cap	고무마개(Hole)	4	4	
A-12	44-021R-7400		Rubber Cap	베드 기름 마개	7	7	
A-13	01-010A-5607		Thread Retainer	윗실걸이	1	2	
A-14	SN-0121-7400		Nut (15/64"n=28)	육각 너트(15/64"n=28)	1	2	
A-15	GP-023464-00		Oil Tank	오일 탱크	1	1	
A-16	44-002M-8130		Oil Tank Felt	오일 탱크 felt	1	1	
A-17	44-0000-1230		Oil Wick	유심	1	1	
A-18	01-108A-8130		Oil Tank Cover	오일 탱크 커버	1	1	
A-19	SC-A301-4119		Screw (9/64"n=40)	흡불이 접시 작은나사(9/64"n=40)	2	2	
A-20	01-027A-1230		Thread Guide With Three Holes	세구멍 실걸이(조)	1		
A-20-1	01-015A-7400		Nut For A-20	세구멍 실걸이 너트	1		
A-21	01-007C-3400		Thread Guide For A-1	아암 실안내	1	1	
A-22	SC-0120-7400		Screw (9/64"n=40)	흡불이 냄비 작은나사(9/64"n=40)	1	1	
A-23	01-021A-8150		Thread Guide Lower	암실걸이	1	1	
A-24	SC-0120-7400		Screw (9/64"n=40)	흡불이 냄비 작은나사(9/64"n=40)	1	1	
A-25	01-010M-2350		Brand Mark	상표 마크(암부)	1	1	
A-26	01-024M-8150		Model Mark	모델 마크	1		
A-27	GP-009188-00		Model Mark	모델 마크		1	
A-28	01-126A-8150		Upper Shaft Collar Cover	상축 카라 커버 (윗커버"A")	1	1	
A-29	SC-A301-4119		Screw (9/64"n=40)	흡불이 접시 작은나사(9/64"n=40)	2	2	
A-30	01-032A-9570		Rear Cover	뒷뚜껑(윗커버"B")	1	1	
A-31	SC-0548-7400		Screw (3/16"n=28)	흡불이 납작 작은나사(3/16"n=28)	3	3	
A-32	01-030A-8150		Slide Plate	미끄럼판	1	1	
A-33	SC-0501-2302		Screw (11/64"n=40)	흡불이 동근접시 작은나사(11/64"n=40)	1	1	
A-34	01-035P-1370		Machine Number Plate	번호판	1	1	
A-35	01-035P-7400		Setting Pin For A-34	번호판 핀	2	2	
A-36	44-0000-1230		Oil Wick	유심	1	1	
A-37	44-012C-1230		Tube For A-36	환류 파이프	1	1	
A-38	44-026G-7400		Holder For A-37	헬트잡이 스프링	2	2	
A-39	SC-0531-2302		Screw (9/64"n=40)	흡불이 동근납작 작은나사(9/64"n=40)	1	1	
A-40	SC-0176-1230		Screw (11/64"n=40)	흡불이 동근납작 작은나사(11/64"n=40)	1	1	
A-41	40-002A-8150		Thread Tension Control Ass'y	실조절 장치(조)	1		
A-42	40-002A-8250		Thread Tension Control Ass'y	실조절 장치(조)		1	
A-43	SC-A156-4118		Screw (9/64"n=40)	흡불이 납작 작은나사(9/64"n=40)	1	1	
A-44	SC-0498-3710		Screw (11/64"n=40)	흡불이 납작 작은나사(11/64"n=40)	1	1	
A-45	40-016A-8250		Thread Release Pin	실늦추기 축		1	
A-46	44-019M-7400		Felt	혹 몸체 전 B/Sfelt			
A-47	SC-0114-1230		Screw (15/64"n=28)	흡불이 멈춤 나사(15/64"n=28)	1		

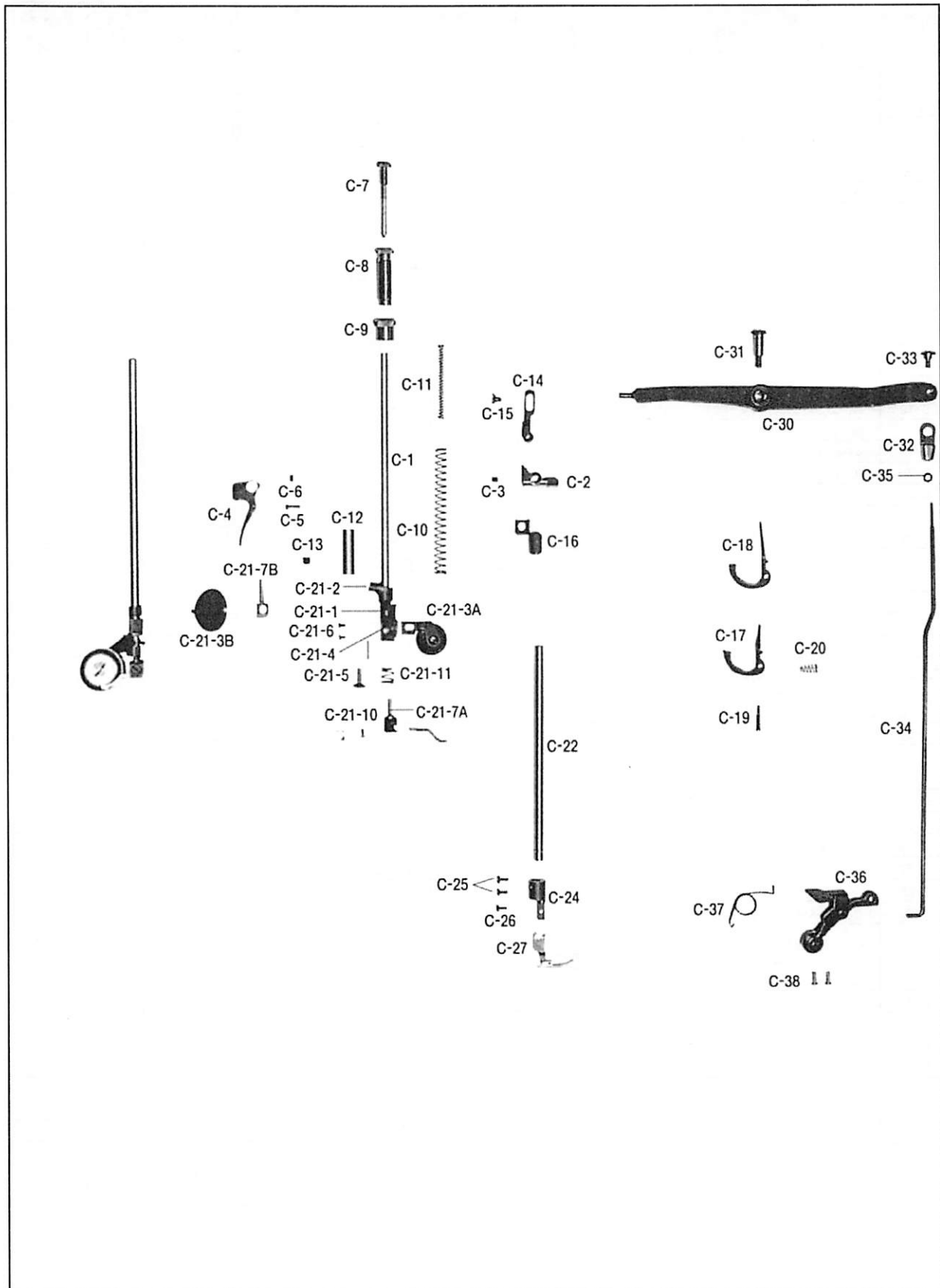




# C

## Presser Foot & Knee Lifting Mechanism

누름대 및 무릎올림 관계

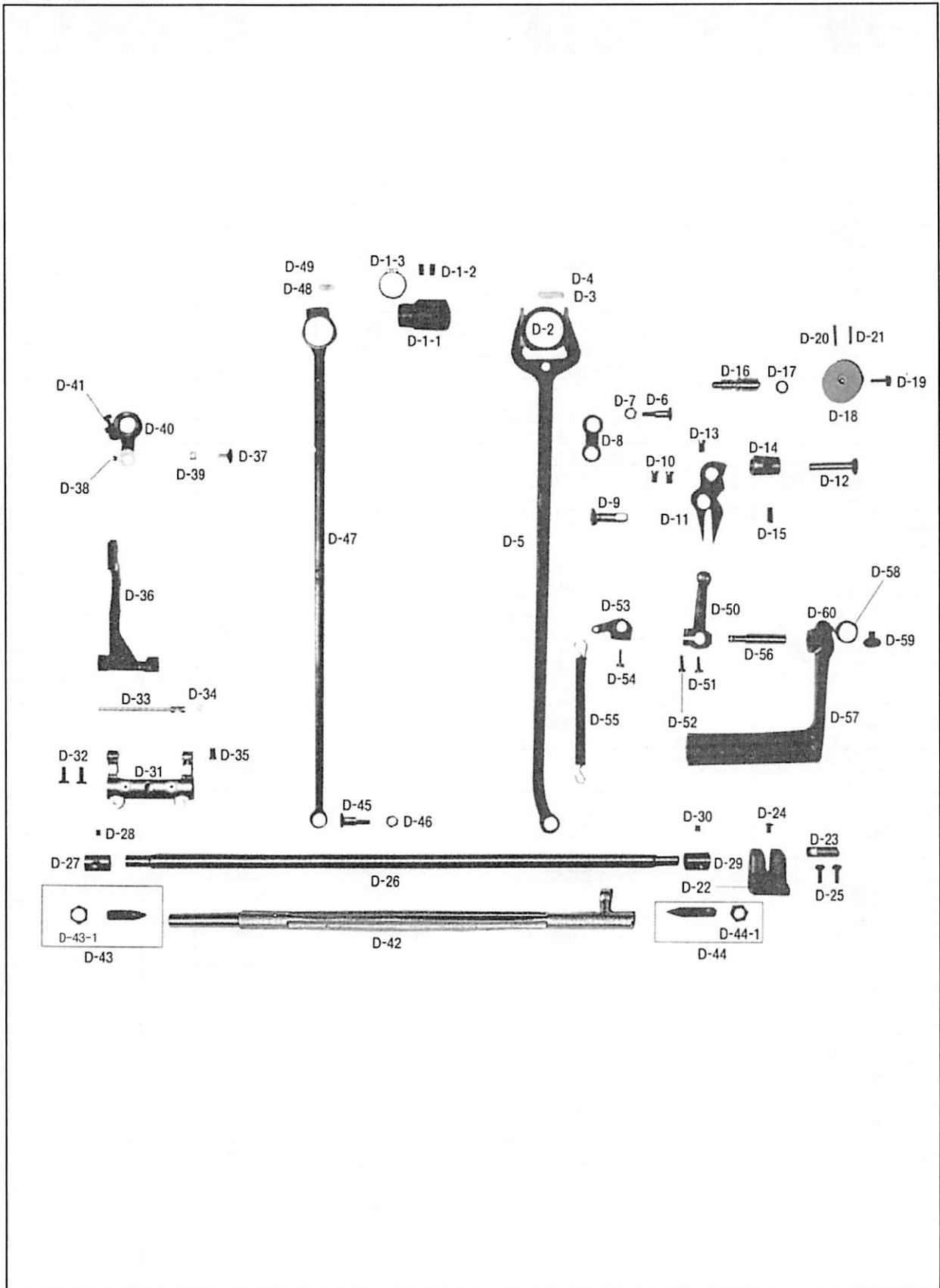




# D

## Feed Mechanism

### 피이드 관계



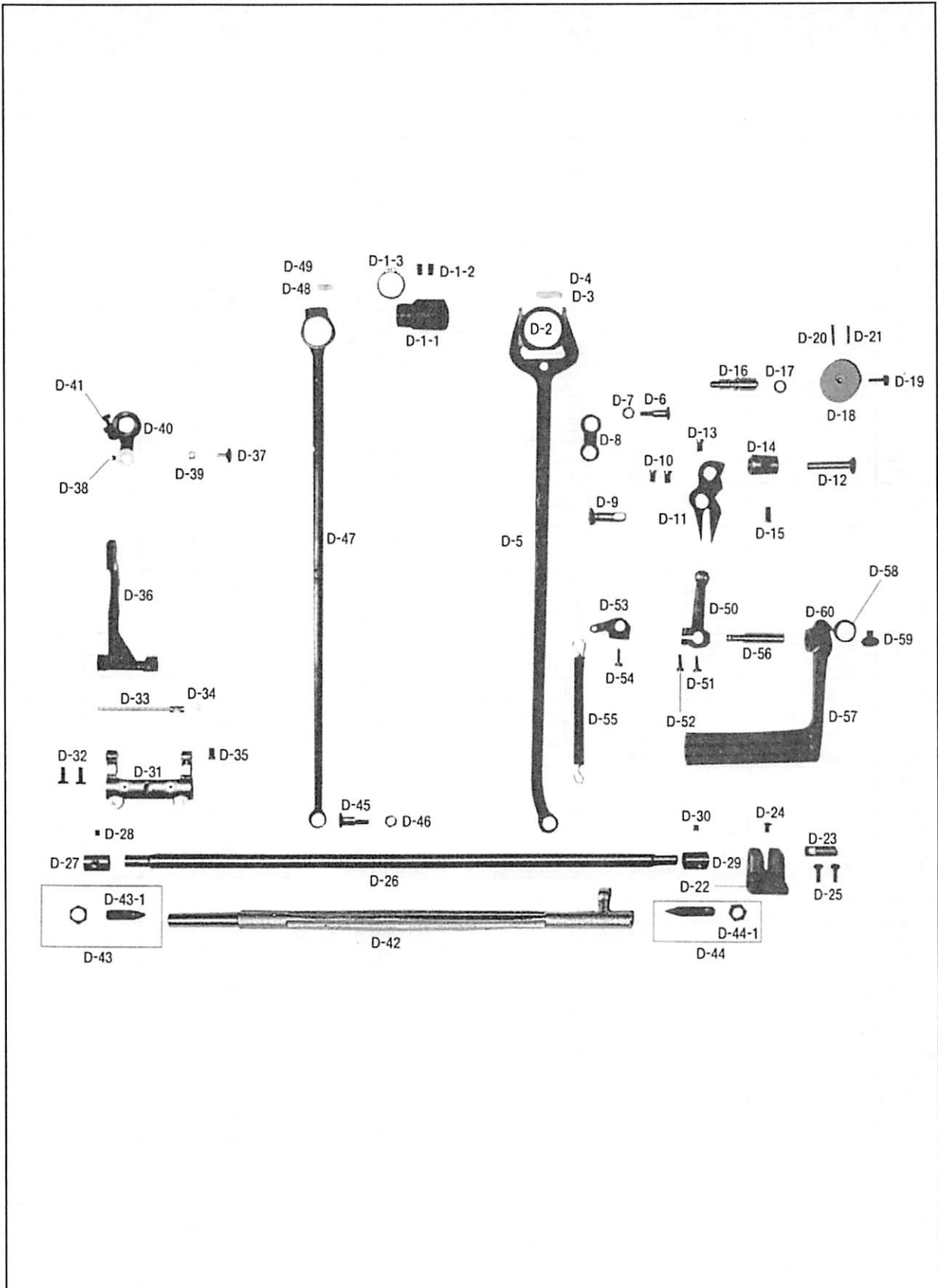


Ref. No.	Parts No.	Note	Name of Parts	품 명	Q'ty		Applied Period
					KM-815	KM-825	
D-1-1	GP-022405-01		Feed Cam	피드캠(HP)	1	1	
D-1-2	SC-0114-1230		Screw (15/64"n=28)	홈볼이 멈춤나사(15/64"n=28)	2	2	
D-1-3	06-007C-1600		C-Ring For D-1-1	크랭크 릿드 스토퍼링(20D)	1	1	
D-2	GP-018046-01		Connection Ring For Y-Rod	와이롯드 연결링	1	1	
D-3	44-018M-3400		Felt For D-2	와이롯드 연결링 급유 펠트	1	1	
D-4	44-015C-3400		Oil Felt Holder For D-2	상하운동 캠 릿드 유심잡이	1	1	
D-5	06-002A-8130		Y-Rod	와이롯드(HP)	1	1	
D-6	06-032A-1230		Stud For D-5	피이드 조절기 연결 단나사	1	1	
D-7	SN-0107-4000		Nut (9/32"n=28)	육각너트(9/32"n=28)	1	1	
D-8	GP-035915-00		Feed Link	피이드 링크	1	1	
D-9	06-003A-8130		Feed Link Connecting Shaft	피이드 링크 연결축	1	1	
D-10	SC-0122-1230		Screw (15/64"n=28)	홈볼이 납작 작은나사(15/64"n=28)	2	2	
D-11	06-004A-8130		Feed Regulator	피이드 조절기(HP)	1	1	
D-12	06-009A-3400		Feed Regulator Shaft	피이드 조절축	1	1	
D-13	SC-0122-1230		Screw (15/64"n=28)	홈볼이 납작 작은나사(15/64"n=28)	1	1	
D-14	06-010A-3400		Feed Regulator Bushing	피이드 조절축 보싱	1	1	
D-15	SC-0507-1230		Screw (15/64"n=28)	홈볼이 멈춤나사(15/64"n=28)	1	1	
D-16	06-013A-8150		Feed Regulator Dial Shaft	피이드 조절 다이알 축	1	1	
D-17	06-010R-1230		O-Ring For D-16	다이알 축 오링	1	1	
D-18	06-012C-123A		Feed Regulator Dial	다이알판(조)	1	1	
D-19	SC-0193-1230		Screw (3/16"n=28)	홈볼이 납작 작은나사(3/16"n=28)	1	1	
D-20	06-012P-7400		Pin For D-18	다이알 핀	1	1	
D-21	06-027G-7400		Spring For D-18	다이알 스프링	1	1	
D-22	06-007A-8130		Feed Rock Shaft Crank	수평 밀대 크랭크(후)	1	1	
D-23	06-006P-8130		Connection Pin For D-21	수평 밀대 크랭크(후) 연결핀	1	1	
D-24	SC-0175-1230		Screw (11/64"n=40)	홈볼이 납작 작은나사(11/64"n=40)	1	1	
D-25	SC-0491-1230		Screw (3/16"n=28)	홈볼이 납작 작은나사(3/16"n=28)	2	2	
D-26	06-023A-1230		Feed Rock Shaft	밀대	1	1	
D-27	06-008A-8130		Feed Rock Shaft Bushing (F)	수평 밀대 전보싱	1	1	
D-28	SC-0114-1230		Screw (15/64"n=28)	홈볼이 멈춤나사(15/64"n=28)	1	1	
D-29	06-009A-8130		Feed Rock Shaft Bushing (R)	수평 밀대 후보싱	1	1	
D-30	SC-0114-1230		Screw (15/64"n=28)	홈볼이 멈춤나사(15/64"n=28)	1	1	
D-31	06-008A-1230		Feed Bar Crank	톱니 받침 크랭크	1	1	
D-32	SC-0307-1230		Screw (3/16"n=32)	홈볼이 납작 작은나사(3/16"n=32)	2	2	
D-33	06-009A-1230		Feed Bar Shaft	톱니 받침 축	1	1	
D-34	06-002W-2350		Washer For D-32	톱니 받침 축 와셔	1	1	
D-35	SC-0122-1230		Screw (15/64"n=28)	홈볼이 납작 작은나사(15/64"n=28)	1	1	
D-36	06-010A-8130		Feed Bar	톱니 받침	1	1	
D-37	06-026A-3400		Feed Bar Block Shaft	톱니 받침 블럭 축	1	1	
D-38	SC-0128-7400		Screw (11/64"n=40)	홈볼이 냄비 작은 나사(11/64"n=40)	1	1	
D-39	06-127A-3400		Feed Bar Block	톱니 받침 블럭(10/16)	1	1	
D-40	GP-007659-00		Feed Lifting Shaft Crank (F)	들대 크랭크(전)	1	1	
D-41	SC-0497-1230		Screw (3/16"n=28)	홈볼이 납작 작은나사(3/16"n=28)	1	1	
D-42	06-039A-8150		Feed Lifting Shaft	들대	1	1	
D-43	SC-0360-3400		Screw (3/8"n=28)	홈볼이 멈춤나사(3/8"n=28)	1	1	
D-43-1	06-031S-3400		Nut For D-43	들대 지지나사 너트	1	1	
D-44	SC-0358-8130		Screw (3/8"n=28)	홈볼이 멈춤나사(3/8"n=28)	1	1	
D-44-1	06-031S-3400		Nut For D-44	들대 지지나사 너트	1	1	
D-45	06-032A-1230		Stud For Crank Rod	피이드 조절기 연결 단나사	1	1	
D-46	SN-0107-4000		Nut (9/32"n=28)	육각너트(9/32"n=28)	1	1	
D-47	06-013A-8130		Crank Rod	크랭크 릿드	1	1	
D-48	44-023M-3400		Felt For D-47	노루발 상하 운동캠 릿드 유심펠트	1	1	
D-49	44-015C-3400		Oil Felt Holder For D-48	상하 운동캠 릿드 유심잡이	1	1	
D-50	06-060A-3400		Feed Regulator Arm Assembly	역진레버 크랭크(조)	1	1	
D-51	SC-A174-4122		Screw (11/64"n=40)	홈볼이 납작 작은나사(11/64"n=40)	1	1	
D-52	SC-0184-1600		Screw (3/16"n=28)	홈볼이 냄비 작은나사(3/16"n=28)	1	1	
D-53	06-135C-2350		Upper Spring Holder	역진 레버 스프링 걸이(상)	1	1	

# D

## Feed Mechanism

피이드 관계

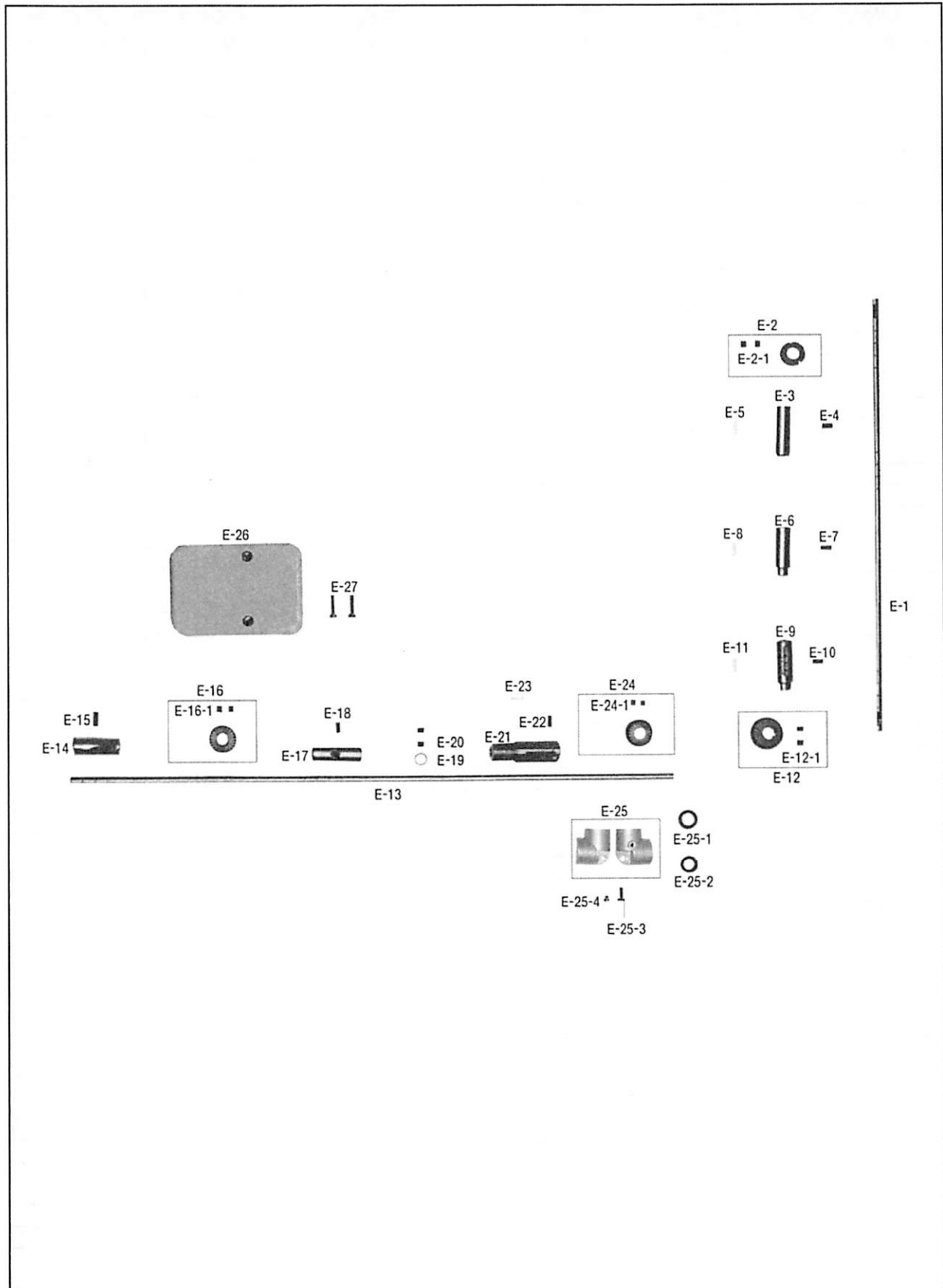






# Upright Shaft & Lower Shaft Mechanism

## 입축 및 하축 관계

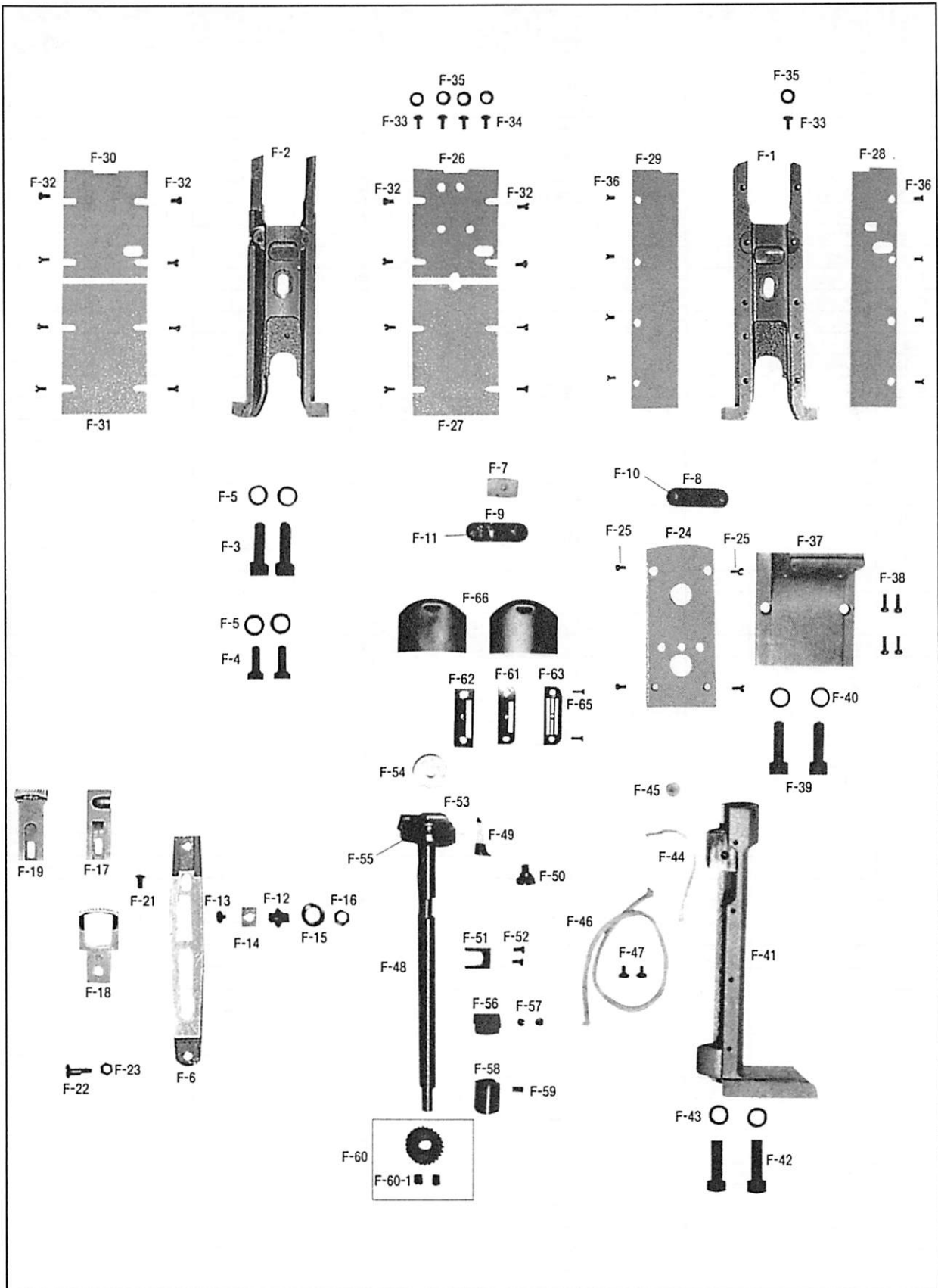






# Post Mechanism

## 포스트 관계



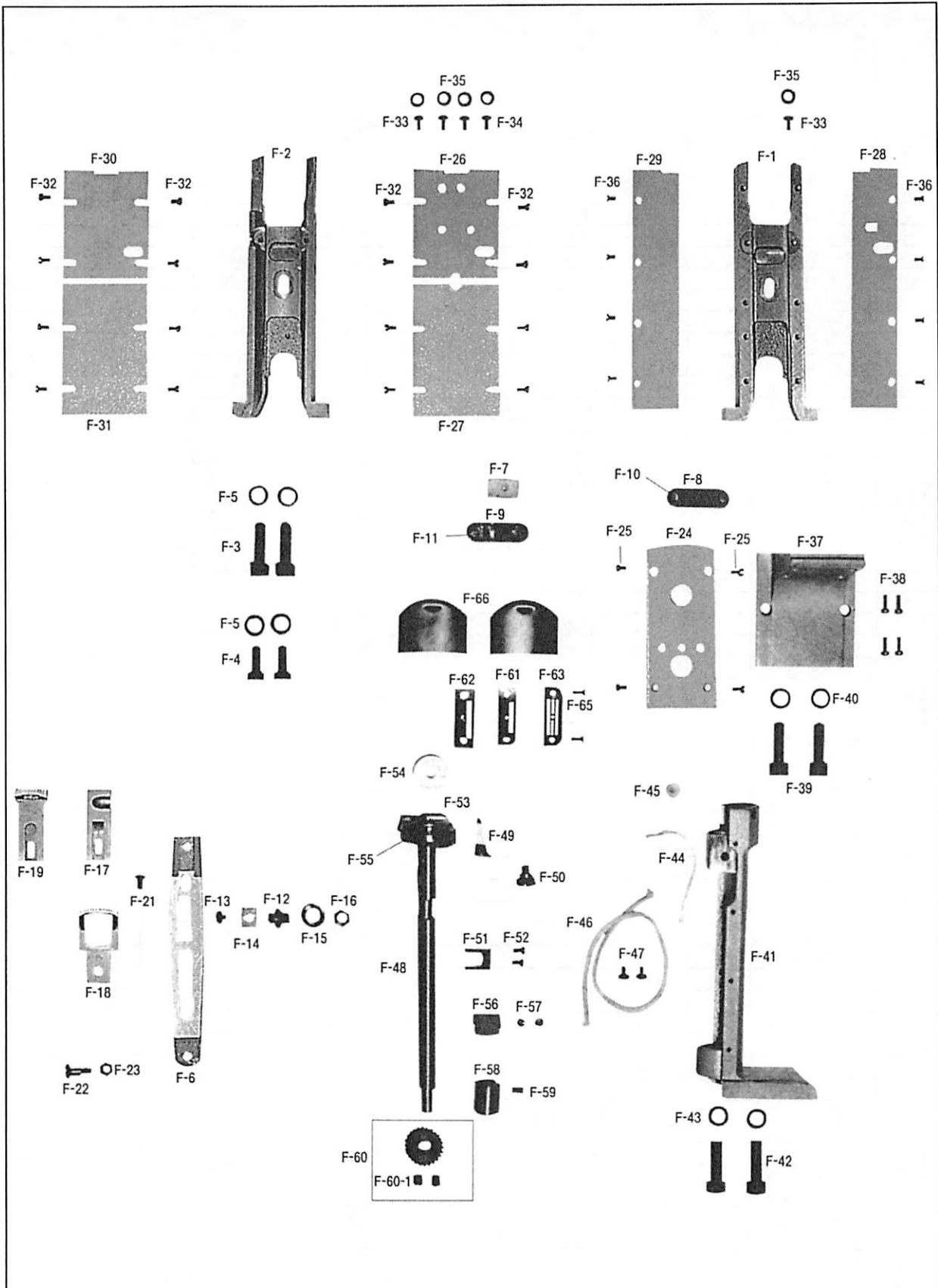


Ref. No.	Parts No.	Note	Name of Parts	품 명	Q'ty		Applied Period
					KM-815	KM-825	
F-1	09-001A-8150		Post	포스트	1		
F-2	09-001A-8250		Post	포스트		1	
F-3	SC-0344-8260		Screw (5/16"n=24)	흡볼이 둥근납작 작은나사(5/16"n=24)	2	2	
F-4	SC-0253-7406		Screw (1/4"n=28)	흡볼이 납비 작은나사(1/4"n=28)		2	
F-5	09-025W-8270		Washer For F-3, F-4	새들 짐나사 와셔	2	4	
F-6	GP-022494-00		Feed Dog Lever	톱니 레버	1	1	
F-7	06-053M-7400		Felt For F-6	포크 felt	1	1	
F-8	09-005C-8270		Guide Plate For F-6	톱니 레버 보강판	1		
F-9	09-005C-8270		Guide Plate For F-6	톱니 레버 보강판		1	
F-10	SC-0501-2302		Screw (11/64"n=40)	흡볼이 둥근접시 작은나사(11/64"n=40)	2		
F-11	SC-0543-2302		Screw (11/64"n=40)	흡볼이 둥근납작 작은나사(11/64"n=40)		2	
F-12	09-006S-8270		Slide Block Shaft	슬라이드 블럭 나사	1	1	
F-13	09-008S-8270		Screw For F-12	슬라이드 블럭 마감나사	1	1	
F-14	09-107A-8270		Slide Block (10/16)	톱니 레버 슬라이드 블럭	1	1	
F-15	09-009W-8270		Washer For F-12	슬라이드 블럭 와셔	1	1	
F-16	SN-0116-3400		Nut (1/4"n=40)	육각너트 (1/4"n=40)	1	1	
F-17	09-015A-8150		Feed Dog (Roller Presser Type)	톱니(로올러 노루발용)	1		
F-18	09-015A-8250		Feed Dog (Roller Presser Type)	톱니(로올러 노루발용)		1	
F-19	09-017A-8150	Option	Feed Dog (Flat Presser Type)	톱니(평 노루발용)	1		
F-21	SC-0543-2302		Screw (11/64"n=40)	흡볼이 둥근납작 작은나사(1/8"n=44)	1	1	
F-22	06-008S-8270		Stud For Feed Bar	톱니 받침 나사	1	1	
F-23	SN-0115-7400		Nut (3/16"n=32)	육각너트(3/16"n=32)	1	1	
F-24	09-001A-8170		Post Left Cover	포스트 커버(좌)	1		
F-25	SC-0501-2302		Screw (11/64"n=40)	흡볼이 둥근접시 작은나사(11/64"n=40)	4		
F-26	09-021C-8230		Post Front Cover (U)	포스트 커버(전) 상		1	
F-27	09-022C-8230		Post Front Cover (L)	포스트 커버(전) 하	1	1	
F-28	09-123C-8170		Post Right Cover (F)	포스트 커버(전) 우	1		
F-29	09-124C-8170		Post Left Cover (R)	포스트 커버(후) 좌		1	
F-30	09-023C-8230		Post Rear Cover (U)	포스트 커버(후) 상		1	
F-31	09-024C-8230		Post Rear Cover (L)	포스트 커버(후) 하		16	
F-32	SC-0502-2302		Screw (9/64"n=40)	흡볼이 둥근납작 작은나사(9/64"n=40)	1	3	
F-33	SC-0537-8260		Screw (3/16"n=32)	흡볼이 둥근납작 작은나사(3/16"n=32)		1	
F-34	SC-0538-8260		Screw (3/16"n=32)	흡볼이 둥근납작 작은나사(3/16"n=32)	1	4	
F-35	01-023C-3710		Washer For F-33, F-34	와셔5	8		
F-36	SC-A301-4119		Screw (9/64"n=40)	흡볼이 접시 작은나사(9/64"n=40)	1		
F-37	09-002A-8170		Post Support	포스트 받침	4	2	
F-38	SC-0179-3710		Screw (11/64"n=40)	흡볼이 둥근납작 작은나사(11/64"n=40)	2	4	
F-39	SC-0326-8266		Screw (5/16"n=24)	흡볼이 납작 작은나사(5/16"n=24)	2	4	
F-40	09-025W-8270		Washer For F-39	새들 짐나사 와셔	1	1	
F-41	09-004A-8130		Saddle	새들	2	2	
F-42	SC-0326-8260		Screw (5/16"n=24)	흡볼이 납작 작은나사(5/16"n=24)	2	1	
F-43	09-025W-8270		Washer For F-42	새들 짐나사 와셔	1	4	
F-44	44-0000-1230		Oil Wick	유심	1	2	
F-45	44-020C-7400		Felt For F-41	흑 몸체 후봇싱 felt	1	2	
F-46	44-0000-1230		Oil Wick	유심	2	2	
F-47	SC-0365-3710		Screw (9/64"n=40)	흡볼이 납비 작은나사(9/64"n=40)	1	2	
F-48	09-040A-8150		Hook Shaft	가마축	1	4	
F-49	GP-025529-01		Opener	오프너	1	2	
F-50	09-015S-8270		Stud For F-49	오프너 단나사	1	2	
F-51	09-016A-8270		Fork For F-49	오프너 블럭	2	2	
F-52	SC-0502-2302		Screw (9/64"n=40)	흡볼이 둥근납작 작은나사(9/64"n=40)	1set	2set	
F-53	09-036A-8570		Rotary Hook Assembly	가마	1	2	
F-54	09-130A-7400		Bobbin	보빈	1	2	
F-55	SC-0147-8270		Screw (9/64"n=40)	접시머리 보울트(9/64"n=40)	1	2	
F-56	09-001A-8130		Collar For F-48	흑 축 카라	1	2	
F-57	SC-0129-7400		Screw (1/4"n=40)	흡볼이 멈춤나사(1/4"n=40)	1	4	
F-58	06-040A-1230		Bushing For F-48	들대 붓싱(후)	1		



# Post Mechanism

포스트 관계

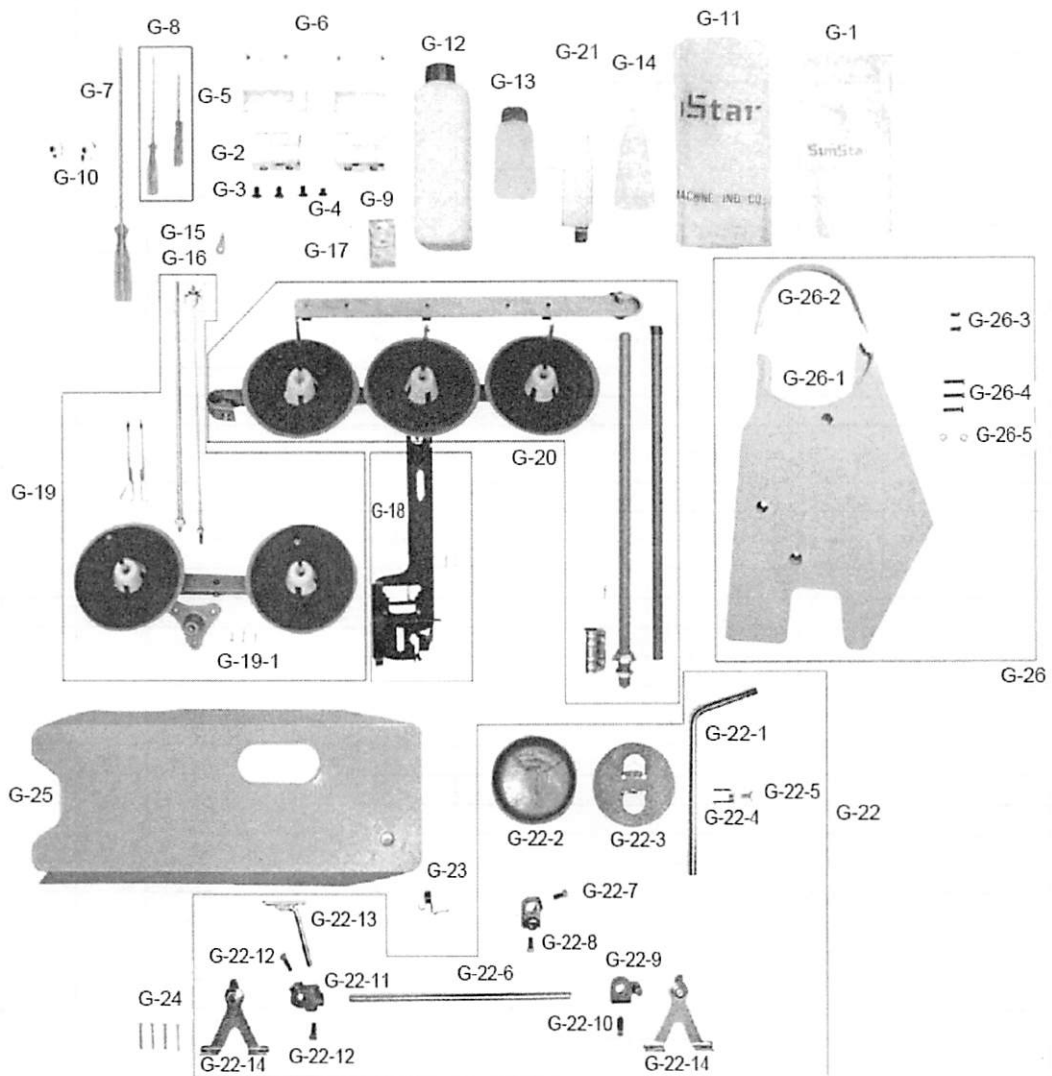




# G

## Accessory Mechanism

### 액세서리 관계

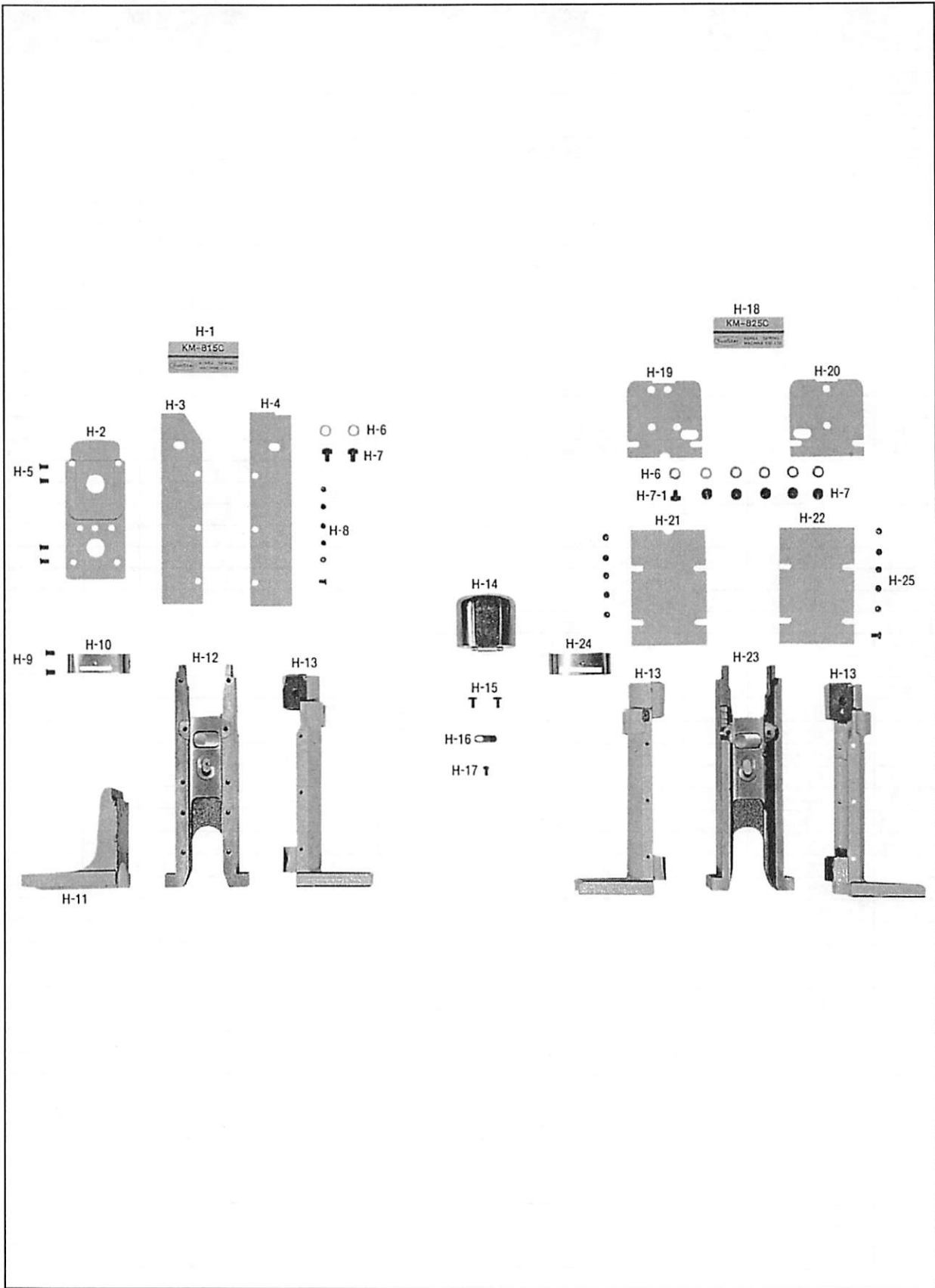






# Hook Cover (Hinge Type) Mechanism (KM-815C/825C)

경첩식 훅 커버 부착 사양 관계 (KM-815C/825C)










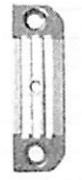










# Gauge Parts

## 게이지 파트

### MODEL : KM-815, KM-815C

Name of Parts  Gauge Type	Needle Plate			Feed Dog		Holder for Presser Foot	Presser Foot			Remark
	Slide-Type		Cover-Type							
										
Ref. No.	F-61	F-63	H-10	F-17	F-19	C-24	C-21-3A	C-21-3B	C-27	
Roller Presser Foot	09-054A-8150	-	09-054A-815C	09-015A-8150	-	-	05-017A-8150 @36 (Standard)	81-011A-8260 @26 (Option)	-	
Plate Presser Foot	-	09-056A-8150	-	-	09-017A-8150 GP-021692-00 (Cap Type) GP-013503-00 (Wig Type)	05-018A-8150	-	-	05-012A-1230	

### MODEL : KM-825, KM-825C

Name of Parts  Gauge Type		Needle Plate		Feed Dog	Needle Clamp	Needle Guide	Presser Foot			Remark
		Slide-Type								
										
Inch	mm	F-62	H-24	F-18	B-26	C-21-8	C-21-3A	C-21-3B	I-1	
1/16	1.6	09-054A-8250	09-054A-825C	09-015A-8250	04-011A-8260	81-016A-8260	05-017A-8150 @36-Standard	81-011A-8260 @26-Option	-	Roller-Type
3/32	2.4	09-154A-8250	09-154A-825C		04-081A-8260	81-006A-8260				Roller-Type
1/8	3.2	01-035A-8260	-	06-011A-8260	04-031A-8260	-	-	-	05-510A-7400	Flat-Type
3/16	4.8	01-048A-8260	-	06-041A-8260	04-061A-8260	-	-	-	05-310A-7400	Flat-Type
1/4	6.4	01-155A-8260	-	06-021A-8260	04-041A-8260	-	-	-	05-010A-7400	Flat-Type
3/8	9.5	01-036A-8260	-	06-031A-8260	04-504A-8260	-	-	-	05-610A-7400	Flat-Type



# Index

Parts No.	Name of Parts	Page	Ref.No.	Parts No.	Name of Parts	Page	Ref.No.	Parts No.	Name of Parts	Page	Ref.No.
01-001A-8150	Arm, Bed Base, Bed (Ass'y)	7	A-1	04-006A-1230	Needle Bar Guide Slide Block	9	B-35	07-002A-1600	Lower Shaft Bushing (F)	17	E-14
01-005A-8150	Face Plate	7	A-2	04-008A-2350	Needle Bar Bushing (U)	9	B-36	07-004A-8150	Lower Shaft Gear(F) Assembly	17	E-16
01-007C-3400	Thread Guide For A-1	7	A-21	04-008A-8150	Needle Bar Holder	9	B-29	08-001A-8130	Hinge Pin For Take-Up Lever	9	B-43
01-007R-8130	Oil Cap	7	A-11	04-010A-8150	Needle Bar Crank	9	B-32	08-003A-8130	Lower Shaft Bushing (M)	17	E-17
01-010A-5607	Thread Retainer	7	A-13	04-015A-8150	Needle Bar Bushing (L)	9	B-39	08-004A-8130	Lower Shaft Bushing (R)	17	E-21
01-010M-2350	Brand Mark	7	A-25	04-104R-1230	Rubber Cap For B-36	9	B-38	09-001A-8130	Collar For F-48	19	F-56
01-015A-7400	Nut For A-20	7	A-20-1	05-007A-8150	Presser Bar Bracket	11	C-2	09-001A-8150	Post	19	F-1
01-021A-8150	Thread Guide Lower	7	A-23	05-009A-7400	Presser Bar Bushing (L)	11	C-12	09-001A-815C	Post	25	H-12
01-023C-3710	Washer F-33, F-34	25	H-6	05-009A-8150	Presser Foot Lifter	11	C-4	09-001A-8170	Post Left Cover	19	F-24
01-023C-3710	Washer For F-33, F-34	19	F-35	05-012A-1230	Flat Presser Foot Assembly	11	C-27	09-001A-8250	Post	19	F-2
01-024M-7400	Felt For Upper Thread Supply	23	G-16	05-013S-8150	Hinge Screw For C-14	11	C-15	09-001A-825C	Post	25	H-23
01-024M-8150	Model Mark	7	A-26	05-014A-8150	Knee Lifting Lever Link Bracket	11	C-16	09-002A-815C	Post Support	25	H-11
01-024M-815C	Model Mark	25	H-1	05-018A-8150	Holder For Presser Foot	11	C-24	09-002A-8170	Post Support	19	F-37
01-024M-825C	Model Mark	25	H-18	05-018P-3400	Hinge Pin For C-4	11	C-5	09-004A-8130	Saddle	19	F-41
01-027A-1230	Thread Guide With Three Holes	7	A-20	05-025S-38LB	Sub Press Adjusting Screw	11	C-7	09-005C-8270	Guide Plate For F-6	19	F-8
01-030A-8150	Slide Plate	7	A-32	05-026S-38LB	Presser Adjusting Screw	11	C-8	09-005C-8270	Guide Plate For F-6	19	F-9
01-031C-146L	Thread Guide For A-2	7	A-4	05-027C-38LB	Nut For C-8	11	C-9	09-006S-8270	Slide Block Shaft	19	F-12
01-032A-9570	Rear Cover	7	A-30	05-028G-38LB	Adjusting Spring For C-21-3	11	C-10	09-008S-8270	Screw For F-12	19	F-13
01-035P-1370	Machine Number Plate	7	A-34	05-029G-38LB	Sub Spring For C-21-3	11	C-11	09-009W-8270	Washer For F-12	19	F-15
01-035P-7400	Setting Pin For A-34	7	A-35	05-101A-8150	Flat Presser Bar	11	C-22	09-015A-8150	Feed Dog (Roller Presser Type)	19	F-17
01-036S-8150	Screw For G-2	23	G-4	05-112C-8150	Knee Lifting Lever Link	11	C-14	09-015A-8250	Feed Dog (Roller Presser Type)	19	F-18
01-038M-2500	Name Plate	7	A-8	05-301A-8150	Roller Presser Bar	11	C-1	09-015S-8270	Stud For F-49	19	F-50
01-108A-8130	Oil Tank Cover	7	A-18	06-002A-8130	Y-Rod	13	D-5	09-016A-8270	Fork For F-49	19	F-51
01-109A-8150	Thread Take-Up Cover	7	A-9	06-002W-2350	Washer For D-32	13	D-34	09-017A-8150	Feed Dog (Flat Presser Type)	19	F-19
01-110R-1230	Rubber Plug For A-2(Small)	7	A-7	06-003A-8130	Feed Link Connecting Shaft	13	D-9	09-021A-815C	Post Left Cover	25	H-2
01-126A-8150	Upper Shaft Collar Cover	7	A-28	06-003G-8130	Reverse Lever Spring	15	D-55	09-021C-8230	Post Front Cover (U)	19	F-26
01-144R-1230	Rubber Plug For A-2(Large)	7	A-6	06-004A-8130	Feed Regulator	13	D-11	09-022C-8230	Post Cover(Front)-Lower	25	H-21
02-001A-8150	Upper Shaft	9	B-1	06-006P-8130	Connection Pin For D-21	13	D-23	09-022C-8230	Post Front Cover (L)	19	F-27
02-002A-8150	Link Cam	9	B-2	06-007A-8130	Feed Rock Shaft Crank	13	D-22	09-023C-8230	Post Rear Cover (U)	19	F-30
02-003A-7400	Take-Up Lever Holder	9	B-46	06-007C-1600	C-Ring For D-1-1	13	D-1-3	09-024C-8230	Post Cover(Rear)-Lower	25	H-22
02-004A-3400	Upper Shaft Bushing (M)	9	B-12	06-008A-1230	Feed Bar Crank	13	D-31	09-024C-8230	Post Rear Cover (L)	19	F-31
02-004A-8270	Thread Take-Up Lever	9	B-42	06-008A-8130	Feed Rock Shaft Bushing (F)	13	D-27	09-025W-8270	Washer For F-3, F-4	19	F-5
02-007A-8150	Upper Shaft Bushing (F)	9	B-7	06-008S-8270	Stud For Feed Bar	19	F-22	09-025W-8270	Washer For F-39	19	F-40
02-009M-7400	Felt For B-7	9	B-9	06-009A-1230	Feed Bar Shaft	13	D-33	09-025W-8270	Washer For F-42	19	F-43
02-013A-8150	Upper Shaft Bushing (R)	9	B-16	06-009A-3400	Feed Regulator Shaft	13	D-12	09-036A-8570	Rotary Hook Assembly	19	F-53
02-015A-8150	Pulley	9	B-19	06-009A-8130	Feed Rock Shaft Bushing (R)	13	D-29	09-037A-8150	Saddle	25	H-13
02-021A-1230	Collar For B-1	9	B-10	06-010A-3400	Feed Regulator Bushing	13	D-14	09-040A-8150	Hook Shaft	19	F-48
02-211A-1230	Upper Shaft Gear Assembly	9	B-15	06-010A-8130	Feed Bar	13	D-36	09-049S-8670	Hook Cover Stopper	25	H-16
02-212A-1230	Upright Shaft Upper Gear(U) Assembly	17	E-2	06-010R-1230	O-Ring For D-16	13	D-17	09-0501-4120	Screw(11/64" n=40)	25	H-5
02-213A-1230	Upright Shaft Lower Gear(L) Assembly	17	E-12	06-012C-123A	Feed Regulator Dial	13	D-18	09-053A-8150	Hook Shaft Gear Assembly	21	F-60
02-214A-1230	Lower Shaft Gear(R) Assembly	17	E-24	06-012P-7400	Pin For D-18	13	D-20	09-054A-8150	Needle Plate(Roller Presser Type)	21	F-61
03-001A-8130	Upright Shaft	17	E-1	06-013A-8130	Crank Rod	13	D-47	09-054A-815C	Needle Plate(Roller Presser Type)	25	H-10
03-002A-3400	Upright Shaft Bushing (U)	17	E-3	06-013A-8150	Feed Regulator Dial Shaft	13	D-16	09-054A-8250	Needle Plate(Roller Presser Type)	21	F-62
03-002A-8130	Upright Shaft Bushing (M)	17	E-6	06-023A-1230	Feed Rock Shaft	13	D-26	09-054A-825C	Needle Plate(Roller Presser Type)	25	H-24
03-003A-8130	Upright Shaft Bushing (L)	17	E-9	06-026A-3400	Feed Bar Block Shaft	13	D-37	09-056A-8150	Needle Plate(Flat Presser Type)	21	F-63
03-007M-3710	Felt For E-21	17	E-23	06-027G-7400	Spring For D-18	13	D-21	09-062A-8150	Hook Cover	25	H-14
03-007M-3710	Felt For E-3	17	E-5	06-031S-3400	Nut For D-43	13	D-43-1	09-068A-8250	Post Cover(Front)-Upper	25	H-19
03-007M-3710	Felt For E-6	17	E-8	06-031S-3400	Nut For D-44	13	D-44-1	09-069A-8250	Post Cover(Rear)-Upper	25	H-20
03-007M-3710	Felt For E-9	17	E-11	06-032A-1230	Stud For Crank Rod	13	D-45	09-081S-8670	Screw For H-10, 23	25	H-9
03-009R-3710	Oil Seal (A)	9	B-48-1	06-032A-1230	Stud For D-5	13	D-6	09-107A-8270	Slide Block (10/16)	19	F-14
03-010A-3710	Upper Gear Case Assembly	9	B-48	06-033M-7400	Felt For B-29	9	B-31	09-123C-8170	Post Right Cover (F)	19	F-28
03-013R-3710	Oil Seal (B)	9	B-48-2	06-033M-7400	Felt For B-44	9	B-47	09-124C-8170	Post Left Cover (R)	19	F-29
03-014R-3710	Oil Seal (C)	9	B-48-3	06-036C-2500	Feed Regulator Lever	15	D-57	09-130A-7400	Bobbin	19	F-54
03-015R-3710	Oil Seal (D)	17	E-25-1	06-039A-8150	Feed Lifting Shaft	13	D-42	09-130A-7400	Bobbin	23	G-10
03-016A-8130	Lower Gear Case Assembly	17	E-25	06-040A-1230	Bushing For F-48	19	F-58	09-166A-8150	Post Right Cover(F)	25	H-3
03-017R-3710	Oil Seal (E)	17	E-25-2	06-052A-8150	Reverse Lever Shaft	15	D-56	09-167A-8150	Post Left Cover(R)	25	H-4
04-001A-8250	Needle Bar	9	B-23	06-053M-7400	Felt For F-6	19	F-7	11-017W-2700	Felt Washer	25	G-26-5
04-002C-1230	Needle Bar Thread Guide	9	B-24	06-053W-1230	Washer For D-57	15	D-58	40-002A-8150	Thread Tension Control Ass'y	7	A-41
04-003R-1600	Thread Guide For B-39	9	B-41	06-060A-3400	Feed Regulator Arm Assembly	13	D-50	40-002A-8250	Thread Tension Control Ass'y	7	A-42
04-004A-8250	Needle Clamp	9	B-26	06-127A-3400	Feed Bar Block	13	D-39	40-004S-8150	Hinge Screw For C-17, 18	11	C-19
04-004G-8260	Spring For C-21-1	11	C-21-11	06-135C-2350	Upper Spring Holder	13	D-53	40-010G-8150	Return Spring For C-17, 18	11	C-20
04-005P-8260	Stopper Pin For C-21-1	11	C-21-5	07-001A-8150	Lower Shaft	17	E-13	40-016A-8250	Thread Release Pin	7	A-45

# Index

Parts No.	Name of Parts	Page	Ref.No.	Parts No.	Name of Parts	Page	Ref.No.	Parts No.	Name of Parts	Page	Ref.No.
41-001A-1230	Bobbin Winder Assembly	23	G-18	91-008A-7400	Thread Stand Assembly	23	G-20	SC-0181-4116	Screw (5/16"n=28)	23	G-22-10
41-002A-1230	Thread Stand Assembly	23	G-19	91-008C-1230	Oil Tank	23	G-12	SC-0181-4116	Screw (5/16"n=28)	23	G-22-12
43-001A-8150	Knee Lifting Lever	11	C-30	91-011C-1230	Oiler	23	G-13	SC-0184-1600	Screw (3/16"n=28)	13	D-52
43-003A-3400	Connection Holder	11	C-32	91-103R-7400	Head Cushion	23	G-6	SC-0184-1600	Screw (3/16"n=28)	17	E-27
43-004S-3400	Hinge Screw For C-32	11	C-33	91-106R-7400	Rubber Cushion For Hinge	23	G-5	SC-0185-1230	Screw (3/16"n=32)	15	D-59
43-005A-3400	Knee Lifting Link Assembly	11	C-36	AS-007629-00	Press Adjust Screw(set)	11	C-39	SC-0186-1230	Screw (3/16"n=32)	15	D-60
43-005A-8150	Knee Lifter Pull Rod	11	C-34	AS-008952-00	Arm, Bed Base, Bed (Ass'y)	7	A-1	SC-0188-1230	Screw (5/16"n=24)	9	B-21
43-006G-3400	Spring For C-36	11	C-37	GP-007659-00	Feed Lifting Shaft Crank (F)	13	D-40	SC-0193-1230	Screw (3/16"n=28)	13	D-19
43-007A-3400	Knee Lifting Ass'y	23	G-22	GP-009188-00	Model Mark	7	A-27	SC-0199-2700	Screw (11/64"n=40)	11	C-21-4
43-009S-1230	Stud For C-30	11	C-31	GP-010492-00	Hook Cover	21	F-66	SC-0205-3710	Screw (1/4"n=24)	9	B-48-4
43-010G-3400	Return Spring For G-22-1	23	G-23	GP-018046-01	Connection Ring For Y-Rod	13	D-2	SC-0205-3710	Screw (1/4"n=24)	17	E-25-4
43-010C-3400	Knee Lifter Arm	23	G-22-1	GP-019020-00	Thread Tension Release	11	C-17	SC-0253-7406	Screw (1/4"n=28)	19	F-4
43-102C-3400	Connection Link For G-22-3	23	G-22-4	GP-019020-00	Thread Tension Release	11	C-18	SC-0307-1230	Screw (3/16"n=32)	13	D-32
43-103R-3400	Knee Lifter Pad	23	G-22-2	GP-019020-01	Thread Tension Release	11	C-17	SC-0307-1230	Screw (3/16"n=32)	15	D-54
43-104C-3400	Knee Lifter Pad Holder	23	G-22-3	GP-022405-01	Feed Cam	13	D-1-1	SC-0310-8130	Screw (9/64"n=40)	21	F-65
43-105C-3400	Knee Lifting Adjusting Plate	23	G-22-13	GP-022494-00	Feed Dog Lever	19	F-6	SC-0326-8260	Screw (5/16"n=24)	19	F-42
43-106C-1230	Connection Crank For G-22-1	23	G-22-7	GP-023464-00	Oil Tank	7	A-15	SC-0326-8266	Screw (5/16"n=24)	19	F-39
43-106C-3400	Stopper Crank	23	G-22-9	GP-025529-01	Opener	19	F-49	SC-0344-8260	Screw (5/16"n=24)	19	F-3
43-107C-3400	Bracket For G-22-6	23	G-22-14	GP-035915-00	Feed Link	13	D-8	SC-0358-8130	Screw (3/8"n=28)	13	D-44
43-108C-3400	Knee Lifter Shaft	23	G-22-6	GP-042491-00	Knee Lifting Lever Link	11	C-14	SC-0360-3400	Screw (3/8"n=28)	13	D-43
43-108S-1230	Set Screw For G-22-4	23	G-22-5	GP-042579-00	Knee Lifting Lever	11	C-30	SC-0365-3710	Screw (9/64"n=40)	19	F-47
43-109C-3400	Connection Crank For G-22-13	23	G-22-11	GP-043870-00	Stopper Pin For C-21-1	11	C-21-5	SC-0491-1230	Screw (3/16"n=28)	13	D-25
44-0000-1230	Oil Wick	7	A-17	GP-044038-00	Post	25	H-12	SC-0497-1230	Screw (3/16"n=28)	13	D-41
44-0000-1230	Oil Wick	7	A-36	GP-056101-00	Needle Bar	9	B-22	SC-0498-3710	Screw (11/64"n=40)	7	A-44
44-0000-1230	Oil Wick	9	B-34	PN-000277-00	Needle Bar Crank Shaft	9	B-33	SC-0499-1230	Screw (11/64"n=40)	21	F-59
44-0000-1230	Oil Wick	9	B-45	PSC-BA000100	Screw (11/64"n=40)	23	G-26-3	SC-0501-2302	Screw (11/64"n=40)	7	A-33
44-0000-1230	Oil Wick	19	F-44	SC-0104-5607	Screw (11/64"n=40)	17	E-20	SC-0501-2302	Screw (11/64"n=40)	19	F-10
44-0000-1230	Oil Wick	19	F-46	SC-0109-2350	Screw (M6)	9	B-48-5	SC-0501-2302	Screw (11/64"n=40)	19	F-25
44-002M-8130	Oil Tank Felt	7	A-16	SC-0110-1230	Screw (15/64"n=28)	9	B-40	SC-0502-2302	Screw (11/64"n=40)	7	A-10
44-003A-8130	Lower Shaft Gear Case	17	E-26	SC-0110-1230	Screw (15/64"n=28)	11	C-13	SC-0502-2302	Screw (9/64"n=40)	19	F-32
44-012C-1230	Tube For A-36	7	A-37	SC-0110-4115	Screw (15/64"n=28)	9	B-37	SC-0502-2302	Screw (9/64"n=40)	19	F-52
44-015C-3400	Oil Felt Holder For D-2	13	D-4	SC-0114-1230	Screw (15/64"n=28)	7	A-47	SC-0502-2302	Screw (9/64"n=40)	25	H-25
44-015C-3400	Oil Felt Holder For D-48	13	D-49	SC-0114-1230	Screw (15/64"n=28)	11	C-3	SC-0504-1230	Screw (1/4"n=40)	9	B-5
44-017M-3400	Felt For B-12	9	B-14	SC-0114-1230	Screw (15/64"n=28)	13	D-1-2	SC-0507-1230	Screw (15/64"n=28)	13	D-15
44-018M-3400	Felt For D-2	13	D-3	SC-0114-1230	Screw (15/64"n=28)	13	D-28	SC-0507-1230	Screw (15/64"n=28)	17	E-4
44-019A-1230	Collar For E-13	17	E-19	SC-0114-1230	Screw (15/64"n=28)	13	D-30	SC-0507-1230	Screw (15/64"n=28)	17	E-7
44-019M-7400	Felt	7	A-46	SC-0118-4119	Screw (1/4"n=24)	23	G-3	SC-0507-1230	Screw (15/64"n=28)	17	E-15
44-019M-7400	Felt For B-16	9	B-18	SC-0120-1230	Screw (9/64"n=40)	7	A-5	SC-0507-1230	Screw (15/64"n=28)	17	E-18
44-020C-7400	Felt For F-41	19	F-45	SC-0120-7400	Screw (9/64"n=40)	7	A-22	SC-0507-1230	Screw (15/64"n=28)	17	E-22
44-021R-7400	Rubber Cap	7	A-12	SC-0120-7400	Screw (9/64"n=40)	7	A-24	SC-0507-4515	Screw (15/64"n=28)	17	E-10
44-023M-3400	Felt For D-47	13	D-48	SC-0122-1230	Screw (15/64"n=28)	13	D-10	SC-0512-1230	Screw (11/64"n=40)	11	C-6
44-026G-7400	Holder For A-37	7	A-38	SC-0122-1230	Screw (15/64"n=28)	13	D-13	SC-0514-7400	Screw (15/64"n=28)	9	B-8
44-040A-8150	Oil Pan	23	G-25	SC-0122-1230	Screw (15/64"n=28)	13	D-35	SC-0514-7400	Screw (15/64"n=28)	9	B-13
60-001A-8150	Belt Cover "A"	23	G-26-1	SC-0123-1230	Screw (9/32"n=28)	9	B-3	SC-0514-7400	Screw (15/64"n=28)	9	B-17
60-004A-640L	Belt Cover "B"	23	G-26-2	SC-0124-7400	Screw (9/32"n=28)	9	B-4	SC-0514-7400	Screw (15/64"n=28)	9	B-44
60-101A-8150	Belt Cover Ass'y	23	G-26	SC-0128-7400	Screw (11/64"n=40)	13	D-38	SC-0531-2302	Screw (9/64"n=40)	7	A-39
81-003S-8260	Stud For C-21-1	11	C-21-2	SC-0129-7400	Screw (1/4"n=40)	9	B-6	SC-0537-4125	Screw (3/16"n=32)	25	H-7
81-005W-8260	Washer For C-21-8	11	C-21-9	SC-0129-7400	Screw (1/4"n=40)	19	F-57	SC-0537-8260	Screw (3/16"n=32)	19	F-33
81-007A-8260	Needle Guide Holder (L)	11	C-21-7B	SC-0130-1230	Screw (1/8"n=44)	11	C-21-10	SC-0538-4125	Screw (3/16"n=32)	25	H-7-1
81-016A-8260	Needle Guide (1/16)	11	C-21-8	SC-0147-8270	Screw (9/64"n=40)	19	F-55	SC-0538-8260	Screw (3/16"n=32)	19	F-34
81-017A-8260	Needle Guide Holder (S)	11	C-21-7A	SC-0150-2500	Screw (15/64"n=28)	9	B-20	SC-0543-2302	Screw (11/64"n=40)	11	C-25
81-104A-8260	Roller Presser Bracket	11	C-21-1	SC-0157-2118	Screw (9/64"n=40)	11	C-26	SC-0543-2302	Screw (11/64"n=40)	19	F-11
90-003A-8670	Head Rest	23	G-21	SC-0158-3710	Screw (9/64"n=40)	9	B-27	SC-0543-2302	Screw (11/64"n=40)	19	F-21
91-001C-1230	Accessory Bag	23	G-1	SC-0158-4122	Screw (9/64"n=40)	9	B-30	SC-0546-1230	Screw (15/64"n=28)	23	G-26-4
91-001C-8270	Machine Head Cover	23	G-11	SC-0160-5607	Screw (9/64"n=40)	11	C-21-6	SC-0548-7400	Screw (3/16"n=28)	7	A-31
91-001S-3400	Screw For G-22-14	23	G-24	SC-0174-1230	Screw (11/64"n=40)	7	A-3	SC-A129-1230	Screw (1/4"n=40)	21	F-60-1
91-002C-1230	Driver (L)	23	G-7	SC-0174-1230	Screw (11/64"n=40)	17	E-25-3	SC-A129-4515	Screw (1/4"n=40)	9	B-11
91-002C-7400	Oil Receiver	23	G-14	SC-0175-1230	Screw (11/64"n=40)	13	D-24	SC-A129-4515	Screw (1/4"n=40)	9	B-15-1
91-003C-1230	Driver (M, S)	23	G-8	SC-0176-1230	Screw (11/64"n=40)	7	A-40	SC-A129-4515	Screw (1/4"n=40)	17	E-2-1
91-003S-2302	Screw For G-19	23	G-19-1	SC-0179-3710	Screw (11/64"n=40)	11	C-38	SC-A129-4515	Screw (1/4"n=40)	17	E-12-1
91-004C-7400	Head Hinge	23	G-2	SC-0179-3710	Screw (11/64"n=40)	19	F-38	SC-A129-4515	Screw (1/4"n=40)	17	E-16-1
91-007C-7400	Needle Thread Inserting Guide	23	G-15	SC-0181-4116	Screw (5/16"n=28)	23	G-22-8	SC-A129-4515	Screw (1/4"n=40)	17	E-24-1



