



PARTS BOOK

KM-857 KM-867

KM-857-7 KM-867-7

KM-857S KM-867S

For High Speed Post Bed

Needle Feed Lock Stitch Machine

PME-131118

SunStar CO., LTD.

Information

A. Parts Book 구성 Structure of Part Book

① **A** Arm, Bed & Machine Body Mechanism
압, 베드 및 외장품 관계

④ ⑤ ⑥ ⑦ ⑧ ⑨

SunStar

Part No.	Parts No.	Note	Name of Parts	품명	Q'ty	Assembly No.
A-1	01-030C-001		Arm	압대	1	
A-2	01-030C-002		Top Plate	상판	1	
A-3	01-030C-003		Press Plate	압판	1	
A-4	01-030C-004		Press Plate (Sheet)	압판 시트	1	
A-5	01-030C-005		Press Plate (Sheet)	압판 시트	1	
A-6	01-030C-006		Upper Cap For Press Plate	상판 덮개	2	
A-7	01-030C-007		Upper Cover	상판 덮개	1	
A-8	01-030C-008		Pressure Cover	압판 덮개	1	
A-9	01-030C-009		Pressure Cover (Sheet)	압판 덮개 시트	1	
A-10	01-030C-010		Feed Cover(L)	송이 덮개(L)	1	
A-11	01-030C-011		Feed Cover(R)	송이 덮개(R)	1	
A-12	01-030C-012		Feed Cover (Sheet)	송이 덮개 시트	1	
A-13	01-030C-013		Washer	세척기	2	
A-14	01-030C-014		Feed Cover(L)	송이 덮개(L)	1	
A-15	01-030C-015		Feed Cover (Sheet)	송이 덮개 시트	1	
A-16	01-030C-016		Top Rubber Cap	상판 고무 덮개	1	
A-17	01-030C-017		Thread Guide with Three Pins	사실 안내 장치	1	
A-18	01-030C-018		Thread Guide(L)	사실 안내 장치(L)	1	
A-19	01-030C-019		Thread Guide(R)	사실 안내 장치(R)	1	
A-20	01-030C-020		Thread Guide (Sheet)	사실 안내 장치 시트	1	
A-21	01-030C-021		Press Guide	압판 가이드	1	
A-22	01-030C-022		Press Guide (Sheet)	압판 가이드 시트	1	
A-23	01-030C-023		Press Guide	압판 가이드	1	
A-24	01-030C-024		Press Guide (Sheet)	압판 가이드 시트	1	
A-25	01-030C-025		Press Guide	압판 가이드	1	
A-26	01-030C-026		Press Guide (Sheet)	압판 가이드 시트	1	
A-27	01-030C-027		Press Guide	압판 가이드	1	
A-28	01-030C-028		Press Guide (Sheet)	압판 가이드 시트	1	
A-29	01-030C-029		Press Guide	압판 가이드	1	
A-30	01-030C-030		Press Guide (Sheet)	압판 가이드 시트	1	
A-31	01-030C-031		Press Guide	압판 가이드	1	
A-32	01-030C-032		Press Guide (Sheet)	압판 가이드 시트	1	
A-33	01-030C-033		Press Guide	압판 가이드	1	
A-34	01-030C-034		Press Guide (Sheet)	압판 가이드 시트	1	
A-35	01-030C-035		Press Guide	압판 가이드	1	
A-36	01-030C-036		Press Guide (Sheet)	압판 가이드 시트	1	
A-37	01-030C-037		Press Guide	압판 가이드	1	
A-38	01-030C-038		Press Guide (Sheet)	압판 가이드 시트	1	
A-39	01-030C-039		Press Guide	압판 가이드	1	
A-40	01-030C-040		Press Guide (Sheet)	압판 가이드 시트	1	
A-41	01-030C-041		Press Guide	압판 가이드	1	
A-42	01-030C-042		Press Guide (Sheet)	압판 가이드 시트	1	
A-43	01-030C-043		Press Guide	압판 가이드	1	
A-44	01-030C-044		Press Guide (Sheet)	압판 가이드 시트	1	
A-45	01-030C-045		Press Guide	압판 가이드	1	
A-46	01-030C-046		Press Guide (Sheet)	압판 가이드 시트	1	
A-47	01-030C-047		Press Guide	압판 가이드	1	
A-48	01-030C-048		Press Guide (Sheet)	압판 가이드 시트	1	
A-49	01-030C-049		Press Guide	압판 가이드	1	
A-50	01-030C-050		Press Guide (Sheet)	압판 가이드 시트	1	
A-51	01-030C-051		Press Guide	압판 가이드	1	
A-52	01-030C-052		Press Guide (Sheet)	압판 가이드 시트	1	
A-53	01-030C-053		Press Guide	압판 가이드	1	
A-54	01-030C-054		Press Guide (Sheet)	압판 가이드 시트	1	
A-55	01-030C-055		Press Guide	압판 가이드	1	
A-56	01-030C-056		Press Guide (Sheet)	압판 가이드 시트	1	
A-57	01-030C-057		Press Guide	압판 가이드	1	
A-58	01-030C-058		Press Guide (Sheet)	압판 가이드 시트	1	
A-59	01-030C-059		Press Guide	압판 가이드	1	
A-60	01-030C-060		Press Guide (Sheet)	압판 가이드 시트	1	

- ①: 관계 별 고유 코드
Unique code by mechanism
- ②: 관계 별 고유 명칭
Unique name by mechanism
- ③: 관계도
Explode view
- ④ Ref.No.: 파트별 고유 식별 번호
Unique identification number by part
- ⑤ Parts No.: 고유 제품 코드
Unique Product code

- ⑥ Note: 공지사항 표기 및 메모
Refers to notice and memo
- ⑦ 품명: 파트의 고유 품명
Name of Part: Unique name of parts
- ⑧ Q'ty: 파트의 수량
The number of parts
- ⑨ Assembly no.: 조(조) 파트의 식별 번호
Unique identification number by set part

Ex)

구분 Category	Code	비고 remarks
구 부품 Old part	01-030C-1230	
신 부품 New Part	AS-000000-00	조(조) 파트 Set parts
	GP-000000-00	기구적 파트 Instrumental parts
	EP-000000-00	전기적 파트 Electrical parts

Warning

1. 조에 속한 파트는 개별 조립 시 제품의 파손 또는 재봉 불량 발생될 수 있어 해당 파트에 대한 주문 시에는 조 품목으로만 구입이 가능합니다.
2. 본 책자는 Parts Book으로 제작되었으므로 매뉴얼로 사용 불가합니다.
3. 사전 예고 없이 사양이 변경 될 수도 있습니다.

1. The parts classified as ass'y items may cause damage to the machine or bad sewing when they are separately assembled. Hence, when they are ordered, they can be purchased as ass'y items only.
2. This is a parts book. It cannot be used as a manual.
3. Parts are Subject to change in Design Without Prior Notice.

Note

- 썬스타 제품의 부품은 아래 인터넷주소로 접속하시어 신청할 수 있습니다.
<http://www.sunstarcs.com>
- 가입된 회원께서는 썬스타 포탈 사이트에 로그인후 필요한 부품을 신청할 수 있습니다.
- 부품관리-발주관리-발주등록 항목에서 부품번호와 신청수량을 입력하여 등록하시면 발주가 됩니다.
- 부품번호를 모르시는 경우 파츠북 조회를 클릭하시고 사용하는 기종을 검색하여 선택하시면 해당 기종의 파츠북을 조회할 수 있습니다.
- 파츠북은 관계별로 구분되어 있으며 관계를 알고 있다면 부품 찾기가 용이합니다.
- You can make an order for the parts of Sunstar machine to connect internet address.
<http://www.sunstarcs.com>
- You can request for parts you want after login if you are a registered member.
- In parts Management - Order Management - Order Registration entry, you can place an order by entering the part number and quantity.
- If you don't know the parts number, click the parts book menu bar.
In a download list, you can read parts book by searching model you use.
- This parts book is classified by the mechanism, therefore you can find part easily.

From the library of Superior Sewing Machine & Supply LLC - www.supsew.com

MODEL

- KM-857
HIGH SPEED POST BED, 1-NEEDLE NEEDLE FEED LOCK STITCH MACHINE
- KM-857-7
HIGH SPEED POST BED, 1-NEEDLE NEEDLE FEED LOCK STITCH MACHINE WITH THREAD TRIMMER
- KM-867
HIGH SPEED POST BED, 2-NEEDLE NEEDLE FEED LOCK STITCH MACHINE
- KM-867-7
HIGH SPEED POST BED, 2-NEEDLE NEEDLE FEED LOCK STITCH MACHINE WITH THREAD TRIMMER

CONTENTS

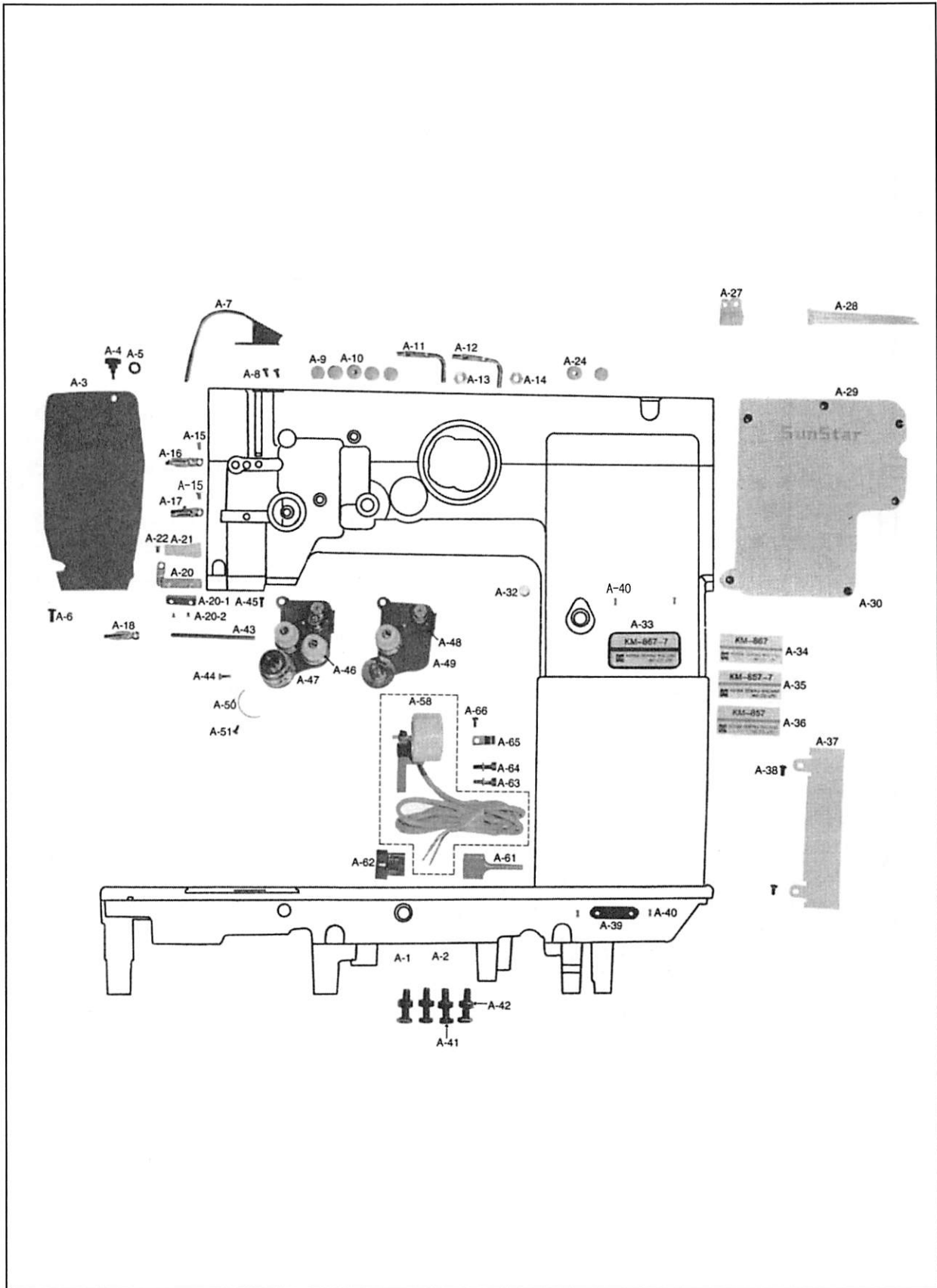
목 차

A	Machine Body & Thread Tension Adjusting Mechanism 외장 및 실장력 조절 관계	6
B	Upper Shaft, Thread Take-up Mechanism 상축, 실채기 관계	8
C	Presser Foot & Knee Lifting Mechanism 노루발 및 무릎 올림 관계	10
D	Needle Bar Rocking Mechanism 바늘대 요동 관계	12
E	Lower Shaft Mechanism 하축 관계	14
F	Post & Saddle Mechanism 포스트 및 새들 관계	16
G	Feed Mechanism 피이드 관계	18
H	Feed Dog Lever & Hook Mechanism 톱니 레버 및 훅 관계	22
I	Lubrication Mechanism 급유 관계	24
J	Thread Trimming Mechanism 사절 관계	28
K	Wiper Mechanism 와이퍼 관계	30
L	Reverse Button Mechanism 역진 버튼 관계	32
M	Synchronizer Mechanism 싱크로나이저 관계	34
N	Program Unit Box & Presser Foot Lifting Solenoid Mechanism 프로그램 유니트 및 노루발 올림 장치 관계	36
O	Accessories Mechanism 액세서리 관계	38
P	KM-857S Mechanism KM-857S 관계	40
Q	KM-867S Mechanism KM-867S 관계	42
R	Gauge Parts 게이지 파트	44
	Index 인덱스	46



Machine Body & Thread Tension Adjusting Mechanism

외장 & 실장력 조절 관계





Ref. No.	Parts No.	Note	Name of Parts	품 명	Q'ty	Applied Period
A-1	AS-005069-01	C,D	Arm, Arm Base, Bed Ass'y	암, 암받침, 베드 (조)	1	May.06.11
A-2	AS-005070-01	C-1,D-1	Arm, Arm Base, Bed Ass'y	암, 암받침, 베드 (조)	1	May.06.11
A-3	CMB-LB006301		Face Plate	면판	1	Apr.05.11
A-4	01-007S-7500		Screw(Upper) For A-3	면판 썸나사(상)	1	
A-5	01-007W-7400		Washer(Upper) For A-3	면판 와셔	1	
A-6	01-009S-7500		Screw(Lower) For A-3	면판 썸나사(하)	1	
A-7	GP-013234-00		Thread Take Up Cover	실채기 커버	1	
A-8	SC-0502-2302		Screw (9/64"n=40)	홈볼이 동근납작 작은나사 (9/64"n=40)	2	
A-9	44-021R-7400		Rubber Cap	베드 기를 마개	5	
A-10	01-007R-8130		Oil Cap	고무마개(Hole)	3	
A-11	01-015A-7400	C,C-1	Thread Retainer	윗실걸이	2	
A-12	01-015A-7400	D,D-1	Thread Retainer	윗실걸이	1	
A-13	SN-0121-7400	C,C-1	Nut (15/64"n=28)	육각너트 (15/64"n=28)	2	
A-14	SN-0121-7400	D,D-1	Nut (15/64"n=28)	육각너트 (15/64"n=28)	1	
A-15	SC-0519-2302		Screw (9/64"n=40)	홈볼이 동근집시 작은나사 (9/64"n=40)	3	
A-16	01-018A-7500		Arm Thread Guide Plate (U)	암 실안내(상)	1	
A-17	01-020A-7500	C,C-1	Arm Thread Guide Plate (M)	암 실안내(중)	1	
A-18	01-022C-7400	D,D-1	Arm Thread Guide Plate (M)	실 걸이(하)	1	
A-20	01-022A-7500		Arm Thread Guide Plate (L)	암 실안내(하)	1	
A-20-1	01-024A-7500		Felt For Upper Thread Supply	윗실 펠트잡이	1	
A-20-2	SC-0536-7500		Screw (3/32"n=56)	홈볼이 동근납작 작은나사 (3/32"n=56)	2	
A-21	44-024M-7500		Felt For Upper Thread Supply	윗실 급유 펠트	1	
A-24	44-008M-7500		Oil Seat	오일 시트	3	
A-27	01-009R-2700	C,D	Cable Holder (6N)	케이블 잡이A (6N)	3	
A-28	02-003A-2700	C,D	Band Clip	나이론 클립	7	
A-29	01-038A-7500		Back Cover Plate	뒷뚜껑	1	
A-30	SC-0179-3710		Screw (11/64"n=40)	홈볼이 동근납작 작은나사 (11/64"n=40)	3	
A-32	06-001C-7400		Oil Cap	피이드 조절기 구멍 마개	1	
A-33	GP-009185-00	C	Model Mark (KM-867-7)	모델 마크(KM-867-7)	1	
A-34	GP-009190-00	C-1	Model Mark (KM-867)	모델 마크(KM-867)	1	
A-35	GP-009193-00	D	Model Mark (KM-857-7)	모델 마크(KM-857-7)	1	
A-36	GP-009191-00	D-1	Model Mark (KM-857)	모델 마크(KM-857)	1	
A-37	01-030A-8677	C,D	Cable Cover	케이블 커버	1	
A-38	SC-0543-2302	C,D	Screw (11/64"n=40)	홈볼이 납작 작은나사 (11/64"n=40)	2	
A-39	01-035P-1370		Machine Number Plate	번호판	1	
A-40	01-035P-7400		Pin	번호판 핀	4	
A-41	SC-0329-8130		Screw (M8x1.25)	육각 보울트(M8 x 1.25)	4	
A-42	01-014C-8130		Nut For A-41	베드받침 너트(M8 x P1.25 3중)	4	
A-43	40-010A-5607		Tension Release Bar	사절 실늦추기 축	1	
A-44	SC-0158-3710		Screw (9/64"n=40)	홈볼이 납작 작은나사 (9/64"n=40)	1	
A-45	SC-0179-3710		Screw (11/64"n=40)	홈볼이 동근납작 작은나사 (11/64"n=40)	1	
A-46	40-002A-7507	C	Thread Tension Control Ass'y	실조절 장치(조)	1	
A-47	40-002A-7500	C-1	Thread Tension Control Ass'y	실조절 장치(조)	1	
A-48	40-002A-8577	D	Thread Tension Control Ass'y	실조절 장치(조)	1	
A-49	40-002A-8570	D-1	Thread Tension Control Ass'y	실조절 장치(조)	1	
A-50	01-019C-7400		Stopper For Thread Take-Up Spring	실조절 장치 스톱퍼	1	
A-51	SC-0531-2302		Screw (9/64"n=40)	홈볼이 동근납작 작은나사 (9/64"n=40)	1	
A-58	40-006A-7507	C,D	Tension Release Solenoid Ass'y(4)	실늦추기 솔레노이드(조)	1	
A-61	17-437C-7907	C,D	Tube For A-58	사각 튜브(소)	1	
A-62	08-010B-3701	C,D	Plug For A-58	플러그 1490P1 (백색)	1	
A-63	SC-0162-5607	C,D	Screw (M5x0.8)	육각구멍볼이 보울트 (M5x0.8)	2	
A-64	07-011W-1230	C,D	Washer For A-58	가마잡이 와셔	2	
A-65	01-009R-2350	C,D	Cable Holder	케이블 잡이	1	
A-66	SC-0531-2302	C,D	Screw (9/64"n=40)	홈볼이 동근납작 작은나사 (9/64"n=40)	1	

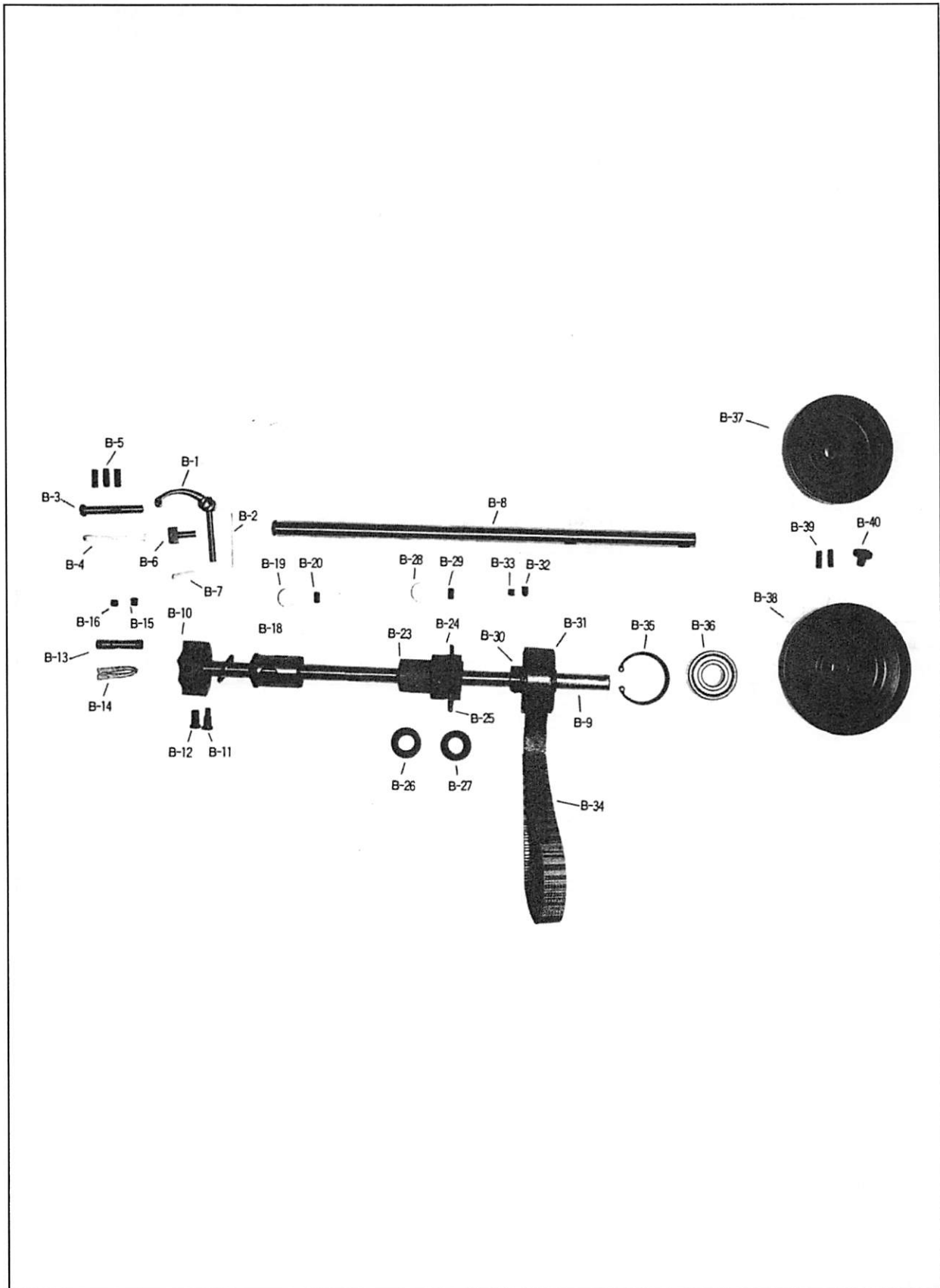
NOTE:

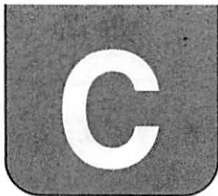
C=KM-867-7
 C-1=KM-867
 D=KM-857-7
 D-1=KM-857

B

Upper Shaft, Thread Take-up Mechanism

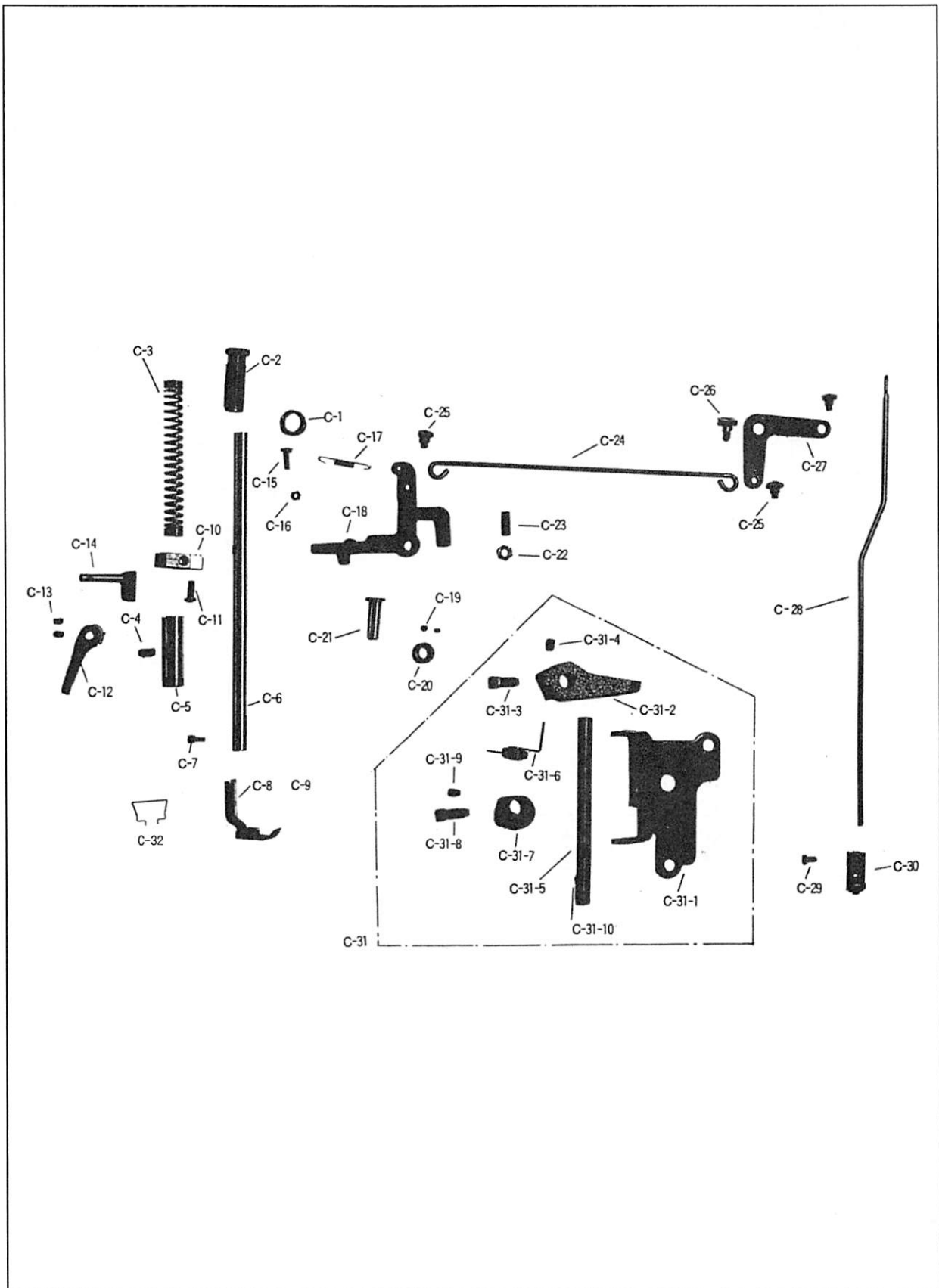
상축, 실채기 관계





Presser Foot & Knee Lifting Mechanism

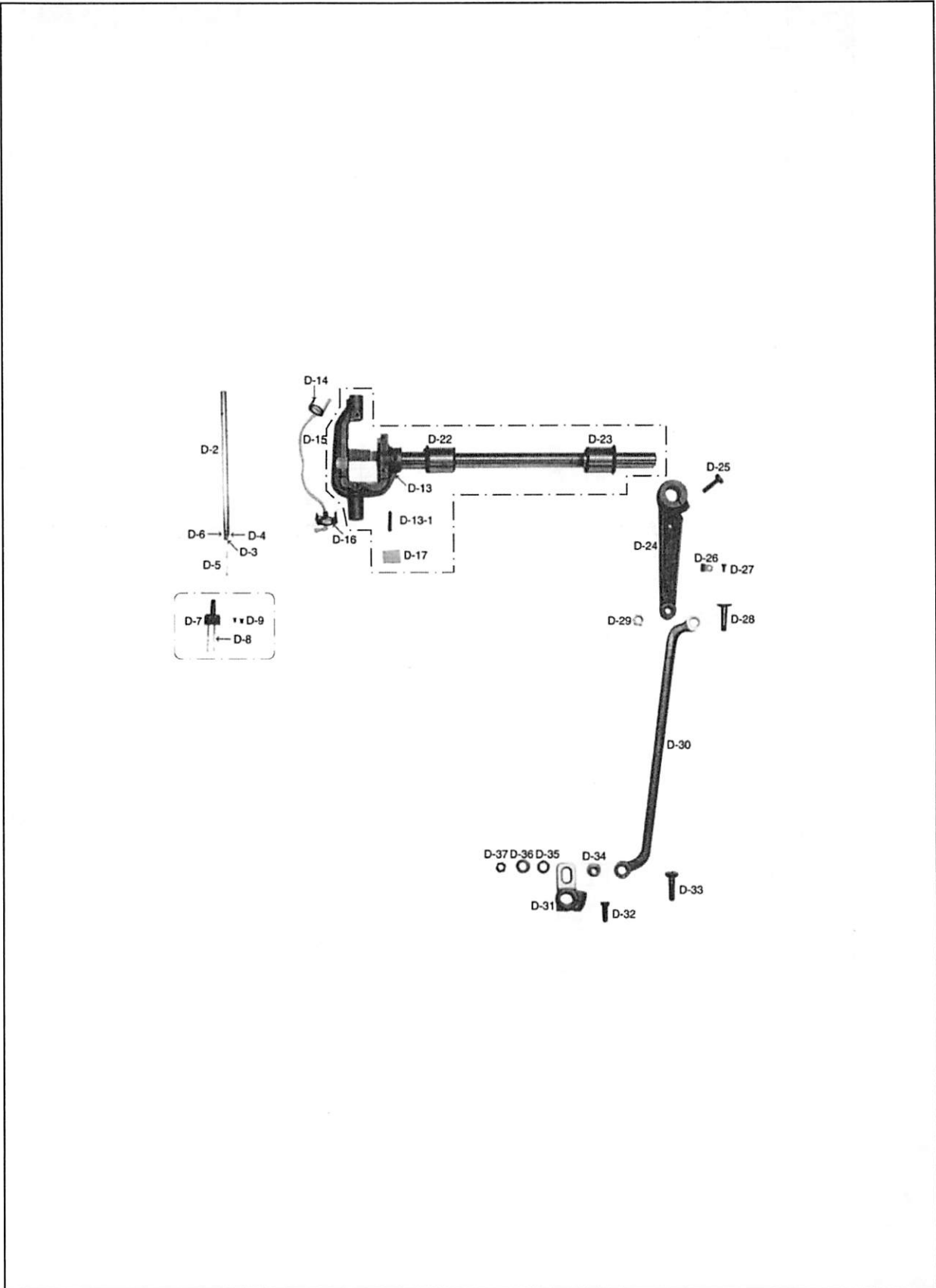
노루발 및 무릎 올림 관계



D

Needle Bar Rocking Mechanism

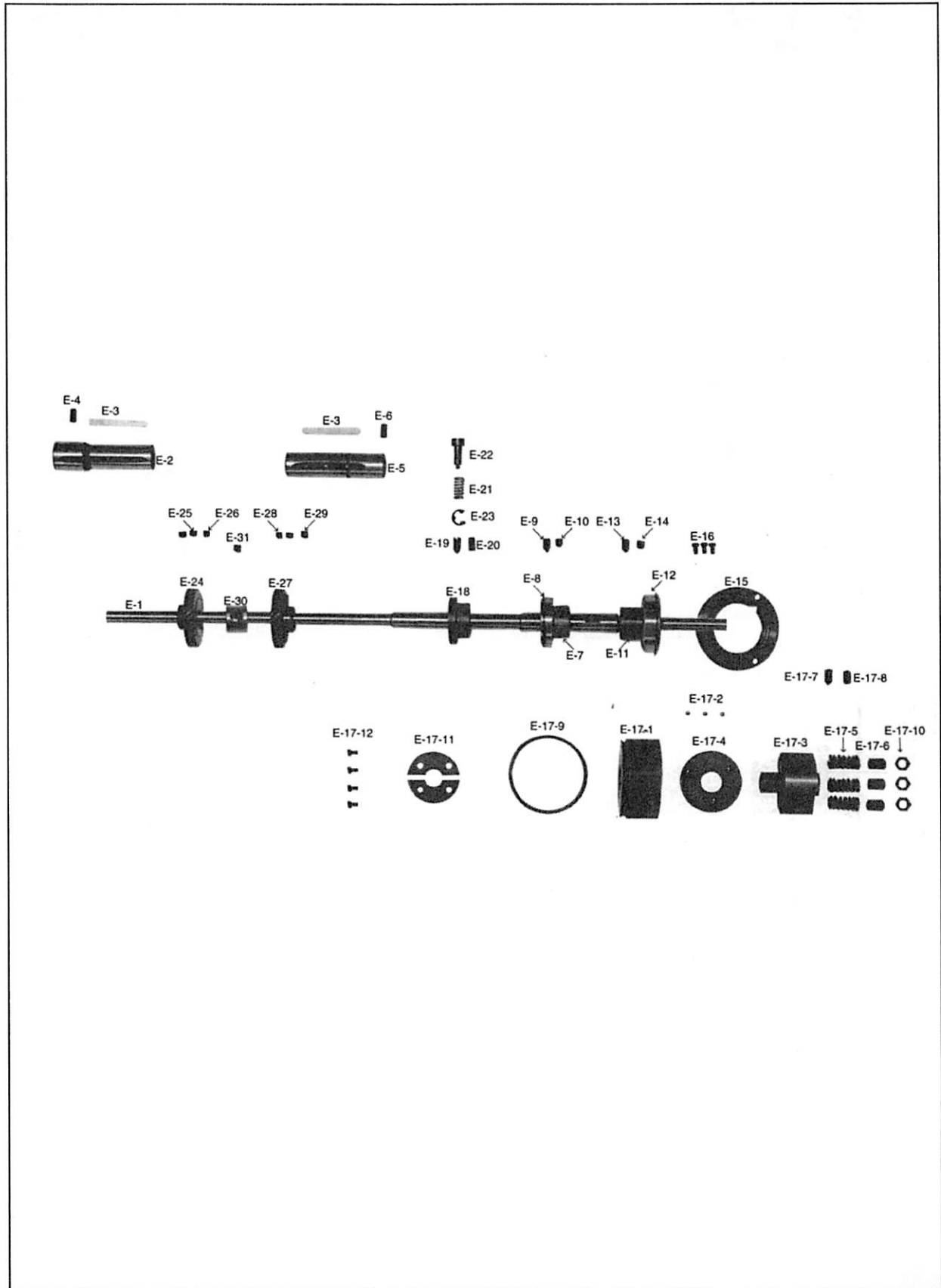
바늘대 요동 관계





Lower Shaft Mechanism

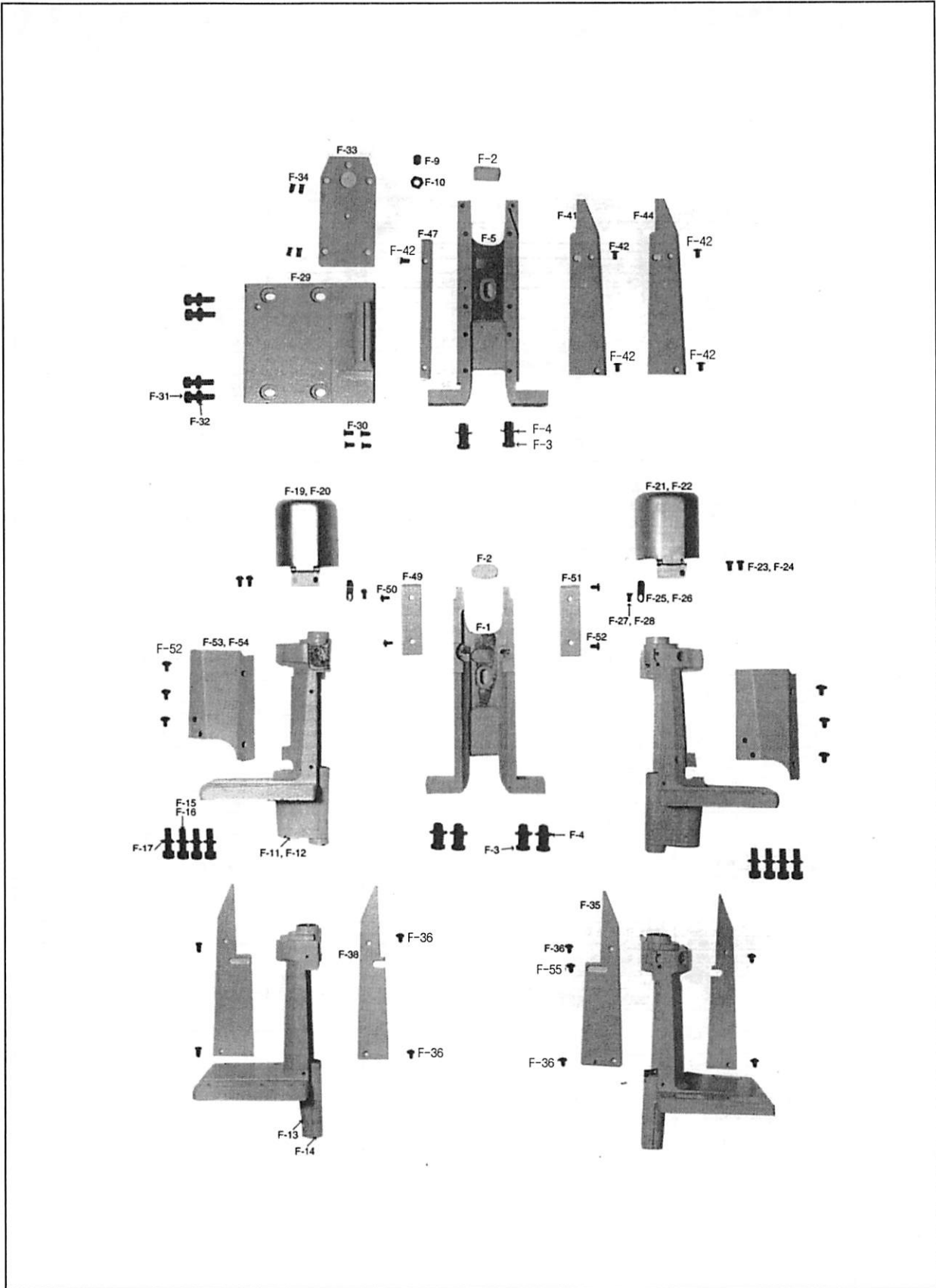
하축 관계





Thread Trimmer Mechanism

사절 관계





Ref. No.	Parts No.	Note	Name of Parts	품 명	Q'ty	Applied
G-1	GP-013504-00		Feed Regulator Dial Shaft	피이드 조절 다이알 축	1	
G-2	06-010R-1230		O-Ring For G-1	다이알 축 오링	1	
G-3	06-001A-7500		Length Control Dial Plate	다이알 문자판 (5)	1	
G-4	SC-0193-1230		Screw (3/16"n=28)	홈볼이 납작 작은나사 (3/16"n=28)	1	
G-5	06-012P-7400		Pin For G-3	다이알 핀	1	
G-6	06-027G-7400		Spring For G-3	다이알 스프링	1	
G-7	06-107A-8670		Feed Regulator	피이드 조절기 (H/P)(C)	1	
G-8	SC-A308-4517		Screw (1/4"n=40)	육각구멍볼이 멈춤나사(1/4"n=40)	1	
G-8-1	SC-A117-4417		Screw (1/4"n=40)	육각구멍볼이 멈춤나사(1/4"n=40)	1	
G-9	06-112A-7500		Feed Regulator Eccentric Wheel Shaft	피이드 조절기 편심축(C)	1	
G-10	06-024S-7400		Screw (3/16"n=32)	홈볼이 냄비 작은나사 (3/16"n=32)	1	
G-11	06-107A-8677	C,D	Reverse Feed Control Shaft	역진 레버축(C)	1	
G-12	06-108A-7500	C-1,D-1	Reverse Feed Control Shaft	역진 레버축(비사절)	1	
G-13	06-113A-8677	C,D	Reverse Crank	역진 크랭크(C)	1	
G-14	SC-0296-3900	C,D	Screw (3/16"n=32)	육각 보울트 (3/16"n=32)	1	
G-15	SC-0122-1230	C,D	Screw (15/64"n=28)	홈볼이 납작 작은나사 (15/64"n=28)	1	
G-16	06-019A-5607	C,D	Stud Screw For G-13	역진 크랭크 단나사	1	
G-16-1	SN-0101-1600	C,D	Nut (11/64"n=40)	육각 너트 (11/64"n=40)	1	
G-17	06-086A-8677	C,D	Reverse Link	백택 솔레노이드 연결링크	1	
G-18	06-118A-5607	C,D	Reverse Solenoid Crank	백택 솔레노이드 크랭크	1	
G-19	06-022A-5607	C,D	Stud Screw For G-17	역진 솔레노이드 연결 링크축(X)	1	
G-20	06-123A-8677	C,D	Reverse Solenoid Bracket	백택 솔레노이드 브라켓	1	
G-21	06-024A-5607	C,D	Stud Screw For G-18	백택 솔레노이드 크랭크 축	1	
G-22	SC-0551-5607	C,D	Screw (1/4"n=28)	홈볼이 냄비 작은나사 (1/4"n=28)	3	
G-23	06-026A-5607	C,D	Reverse Solenoid Assembly(4)	백택 솔레노이드(조)	1	
G-24	SC-0307-1230	C,D	Screw (3/16"n=32)	홈볼이 냄비 작은나사 (3/16"n=32)	3	
G-26	26-029A-5607	C,D	Reverse Solenoid Cover	백택 솔레노이드 커버(X)	1	
G-28	06-024S-7400	C,D	Screw (3/16"n=32)	홈볼이 냄비 작은나사 (3/16"n=32)	1	
G-29	06-032A-8670	C-1,D-1	Link For Reverse Lever Spring	역진 레버 스프링 링크	1	
G-29-1	06-018P-7400	C-1,D-1	Roller For Spring Hook	레버축 스프링 걸이핀	1	
G-30	SC-0122-1230	C-1,D-1	Screw (15/64"n=28)	홈볼이 납작 작은나사 (15/64"n=28)	1	
G-31	06-003G-8677		Reverse Lever Return Spring	역진 레버 스프링	1	
G-33	GP-012781-01	C,D	Reverse Feed Control Lever	역진 레버(사절)	1	
	06-061A-7507	C,D	Reverse Feed Control Lever	역진 레버(사절)	1	
G-34	06-062A-7500	C-1,D-1	Reverse Lever	역진 레버(비사절)	1	
G-35	SC-0186-1230	C-1,D-1	Screw (3/16"n=32)	홈볼이 냄비 작은나사 (3/16"n=32)	1	
G-36	SC-0185-1230	C-1,D-1	Screw (3/16"n=32)	홈볼이 바인딩 작은나사 (3/16"n=32)	1	
G-37	06-053W-1230	C-1,D-1	Washer For G-34	레버 와셔	1	
G-38	06-066G-7507	C,D	Reverse Lever Spring(A)	역진 레버 스프링(A)	1	
G-39	06-143W-5607	C,D	Washer For G-40	역진 레버 와셔	2	
G-40	GP-018765-02	C,D	Auto Reverse Lever	역진 레버 B(K2888)	1	
G-41	SC-A117-4417	C,D	Screw (1/4"n=40)	육각구멍볼이 멈춤나사 (1/4"n=40)	1	
G-42	SC-A308-4517	C,D	Screw (1/4"n=40)	육각구멍볼이 멈춤나사 (1/4"n=40)	1	
G-43	06-071S-7507	C,D	Stud Screw For G-44	역진 레버 스토퍼(상) 단나사	1	
G-44	06-072R-7507	C,D	Upper Stopper Rubber For Reverse Lever	역진 레버 스토퍼(상) 고무	1	
G-45	06-022C-7400		Reverse Lever Stopper (Lower)	역진 레버 스토퍼	1	
G-46	SC-0543-2302		Screw (11/64"n=40)	홈볼이 납작 작은나사 (11/64"n=40)	1	
G-47	06-051A-8670		Feed Regulator Connecting Rod	절환기 연결 로드 (H/P)	1	
G-48	06-015A-7500		Stud Screw For G-47	절환기 연결 로드 단나사	1	
G-49	06-116A-8670		Feed Regulator Shaft	절환기(C)	1	
G-50	07-252A-5607		Stopper Collar For G-49	절환기 스토퍼 키라(C)	1	
G-51	SC-0317-2700		Screw (15/64"n=28)	육각구멍볼이 멈춤나사 (15/64"n=28)	2	
G-52	06-033M-7400		Felt For G-49	절환기 felt	4	
G-53	44-0000-1230		Oil Wick	유심	1	
G-54	44-058C-5607		Wick Holder For G-49	절환기 유심잡이	1	
G-55	SC-0549-2302		Screw (1/8"n=44)	홈볼이 둥근납작 작은나사 (1/8"n=44)	2	
G-56	GP-020929-00		Feed Cam	피드 캠 (S)	1	

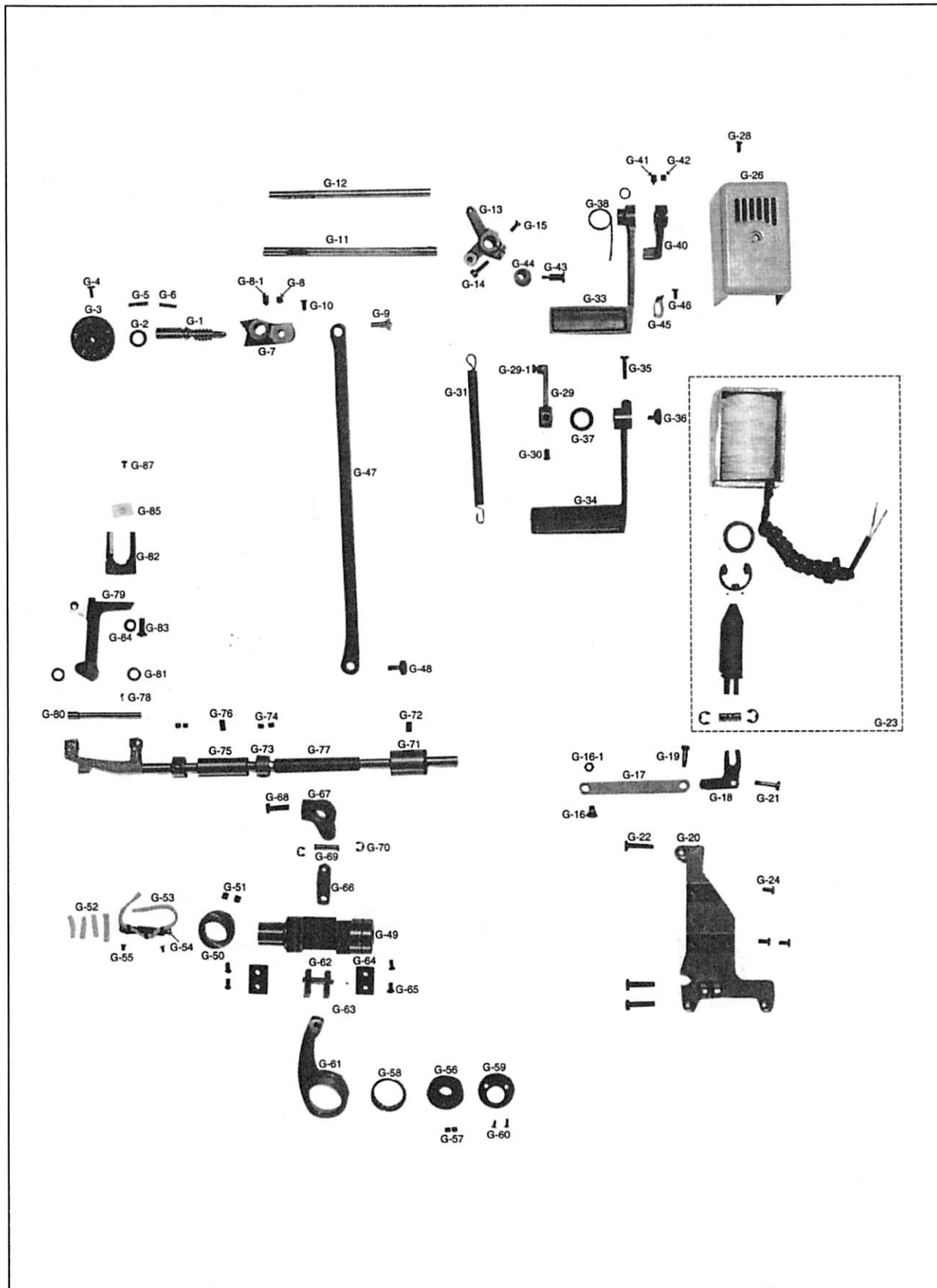
NOTE:

C-KM-867-7
 C-1-KM-867
 D-KM-857-7
 D-1-KM-857



Feed Mechanism

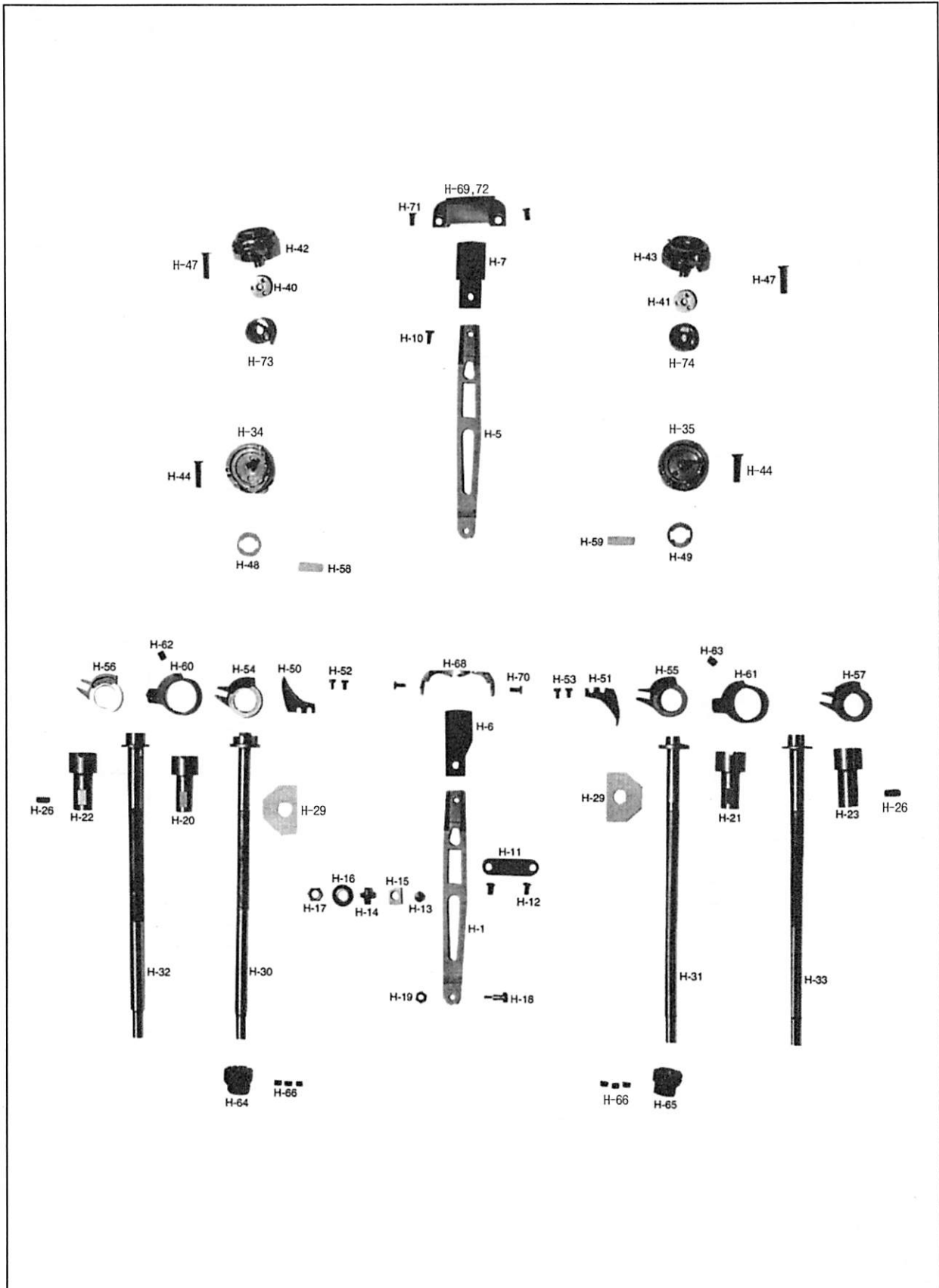
피이드 관계





Feed Dog Lever & Hook Mechanism

톱니 레버 및 훅 관계





Ref. No.	Parts No.	Note	Name of Parts	품 명	Q'ty	Applied Period
H-1	GP-022421-00	C,C-1	Lever For Feed Dog	톱니 레버	1	
H-5	GP-022421-00	D,D-1	Lever For Feed Dog	톱니 레버	1	
H-6 *	06-012A-8270	C,C-1	Feed Dog (3/32)	톱니 (3/32)	1	
H-7	09-079A-8570	D,D-1	Feed Dog	톱니	1	
H-10	SC-0175-1230	D,D-1	Screw (11/64"n=40)	흡불이 납작 작은나사 (11/64"n=40)	1	
H-11	09-005C-8270	C,C-1	Feed Dog Lever Retainer Washer	톱니 레버 보강판	1	
H-12	SC-0543-2302	C,C-1	Screw (11/64"n=40)	흡불이 납작 작은나사 (11/64"n=40)	2	
H-13	09-008S-8270		Screw For Feed Dog Lever Slide Block	슬라이더 블록 마개나사	1	
H-14	09-006S-8270		Shaft Feed Dog Lever Slide Block	슬라이더 블록 나사	1	
H-15	09-107A-8270		Feed Dog Lever Slide Block	톱니 레버 슬라이드 블록	1	
H-16	09-009W-8270		Washer For H-15	슬라이드 블록 와셔	1	
H-17	SN-0116-8270		Nut (1/4"n=40)	육각너트 (1/4"n=40)	1	
H-18	06-008S-8270		Stud Screw For Feed Bar	톱니 받침나사	1	
H-19	SN-0101-1600		Nut (3/16"n=32)	육각너트 (3/16"n=32)	1	
H-20	09-127A-8677	C	Bushing For Hook Shaft	축축 붓심 (사절)	2	
H-21	09-127A-8677	D	Bushing For Hook Shaft	축축 붓심 (사절)	1	
H-22	09-128A-8670	C-1	Bushing For Hook Shaft	축축 붓심 (비사절)	2	
H-23	09-128A-8670	D-1	Bushing For Hook Shaft	축축 붓심 (비사절)	1	
H-26	SC-0508-1230	C,C-1	Screw (15/64"n=28)	흡불이 멈춤나사 (15/64"n=28)	3	
H-29	44-029M-8670	D,D-1	Hook Shaft Felt	축축 급유 헬트	3	
H-30	09-130A-8677	C	Hook Shaft	축축 (사절)	2	
H-31	09-130A-8677	D	Hook Shaft	축축 (사절)	1	
H-32	CHK-HA001800	C-1	Hook Shaft	축축 (비사절)	2	
H-33	CHK-HA001800	D-1	Hook Shaft	축축 (비사절)	1	
H-34	09-031A-8577	C	Hook	가마 HPF-490A (5) TR/CP	2	
H-35	09-031A-8577	D	Hook	가마 HPF-490A (5) TR/CP	1	
H-40	07-160A-7500	C,C-1	Bobbin	실토리 (보빈) 표준	2	
H-41	07-160A-7500	D,D-1	Bobbin	실토리 (보빈) 표준	1	
H-42	09-036A-8570	C-1	Hook	가마 HSH-31 (6)	2	
H-43	09-036A-8570	D-1	Hook	가마 HSH-31 (6)	1	
H-44	SC-0147-8270	C	Screw (M5x0.8)	접시머리 볼트 (M5x0.8)	3	
H-47	SC-0161-8677	D-1	Screw (9/64"n=40)	접시머리 볼트 (9/64"n=40)	3	
H-48	09-039W-8677	C	Hook Washer	축 받침 와셔	2	
H-49	09-039W-8677	D	Hook Washer	축 받침 와셔	1	
H-50	09-140A-8670	C,C-1	Opener	보빈 케이스 오프너(C)	2	
H-51	09-140A-8670	D,D-1	Opener	보빈 케이스 오프너(C)	1	
H-52	SC-A131-4522	C,C-1	Screw (1/8"n=44)	흡불이 납작 작은나사 (1/8"n=44)	4	
H-53	SC-A131-4522	D,D-1	Screw (1/8"n=44)	흡불이 납작 작은나사 (1/8"n=44)	2	
H-54	09-142A-8677	C	Opener Holder	오프너 홀더 (사절)	2	
H-55	09-142A-8677	D	Opener Holder	오프너 홀더 (사절)	1	
H-56	09-042A-8670	C-1	Opener Holder	오프너 홀더 (비사절)	2	
H-57	09-042A-8670	D-1	Opener Holder	오프너 홀더 (비사절)	1	
H-58	44-030M-8670	C,C-1	Opener Holder Felt	오프너 잡이 헬트	2	
H-59	44-030M-8670	D,D-1	Opener Holder Felt	오프너 잡이 헬트	1	
H-60	09-144A-8670	C,C-1	Opener Stopper	오프너 위치 스토퍼	2	
H-61	09-144A-8670	D,D-1	Opener Stopper	오프너 위치 스토퍼	1	
H-62	SC-0508-1230	C,C-1	Screw (15/64"n=28)	흡불이 멈춤나사 (15/64"n=28)	3	
H-64	09-002A-7400	C,C-1	Hook Shaft Gear	기어 (소)	2	
H-65	09-002A-7400	D,D-1	Hook Shaft Gear	기어 (소)	1	
H-66	SC-A550-4517	C,C-1	Screw (1/4"n=40)	흡불이 멈춤나사 (1/4"n=40)	9	
H-68 *	09-079A-8670	C,C-1	Needle Plate	침판 3/32	1	
H-69	09-080A-8570	D,D-1	Needle Plate	침판	1	
H-70	09-081S-8670	D,D-1	Screw For Needle Plate	바늘판 침나사	2	
H-71	SC-0302-8260	C,C-1	Screw (11/64"n=40)	접시머리 볼트 (11/64"n=40)	2	
H-72 *	GP-021129-00	D,D-1	Needle Plate(Cap)	침판(모자용)	1	
H-73	09-131A-8577	C	Bobbin Case	보빈 케이스	2	
H-74	09-131A-8577	D	Bobbin Case	보빈 케이스	1	

NOTE:

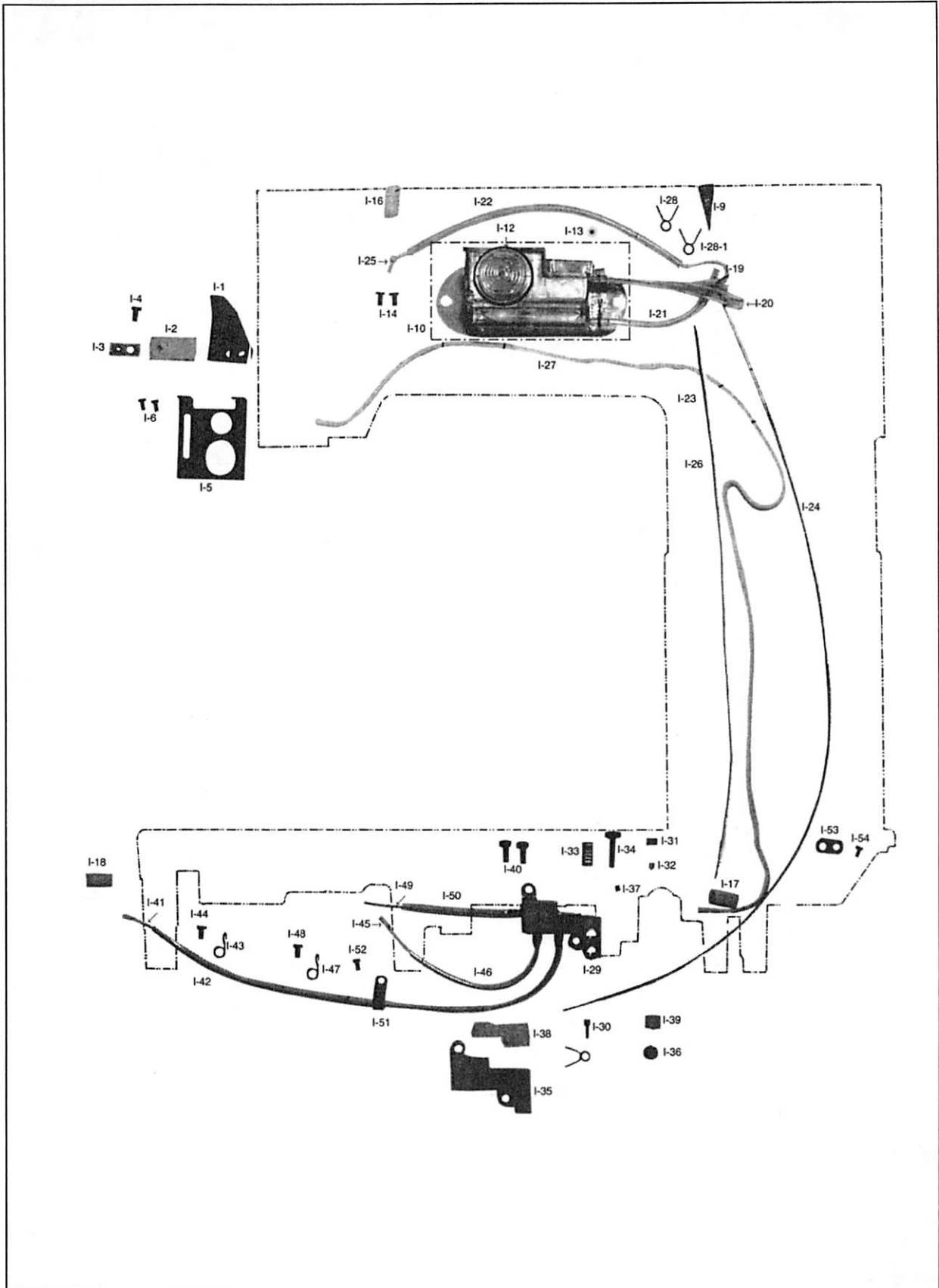
C=KM-867-7
 C-1=KM-867
 D=KM-857-7
 D-1=KM-857

The ** Mark is
 Option Parts



Lubrication Mechanism

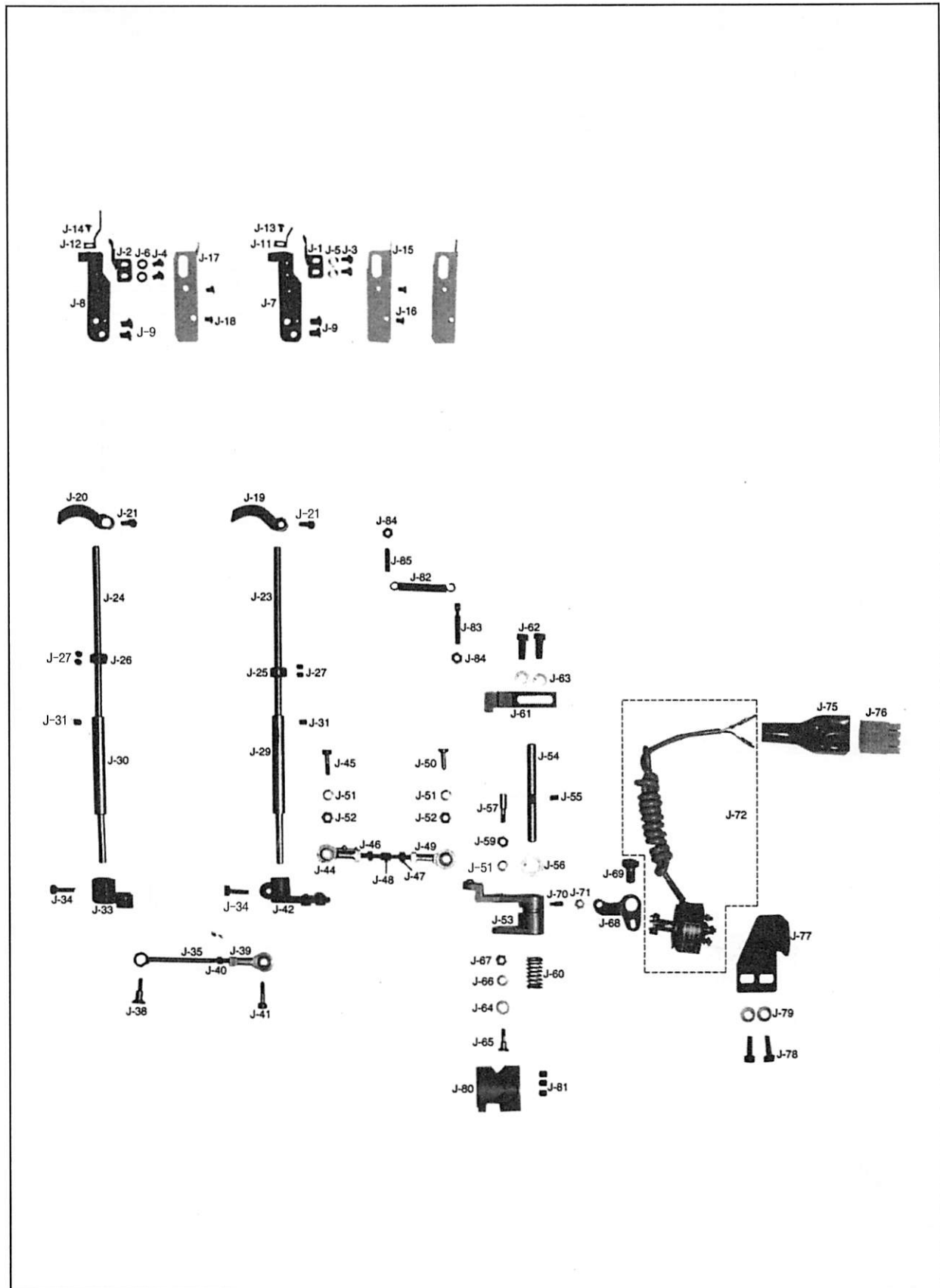
급유 관계





Thread Trimming Mechanism

사절 관계





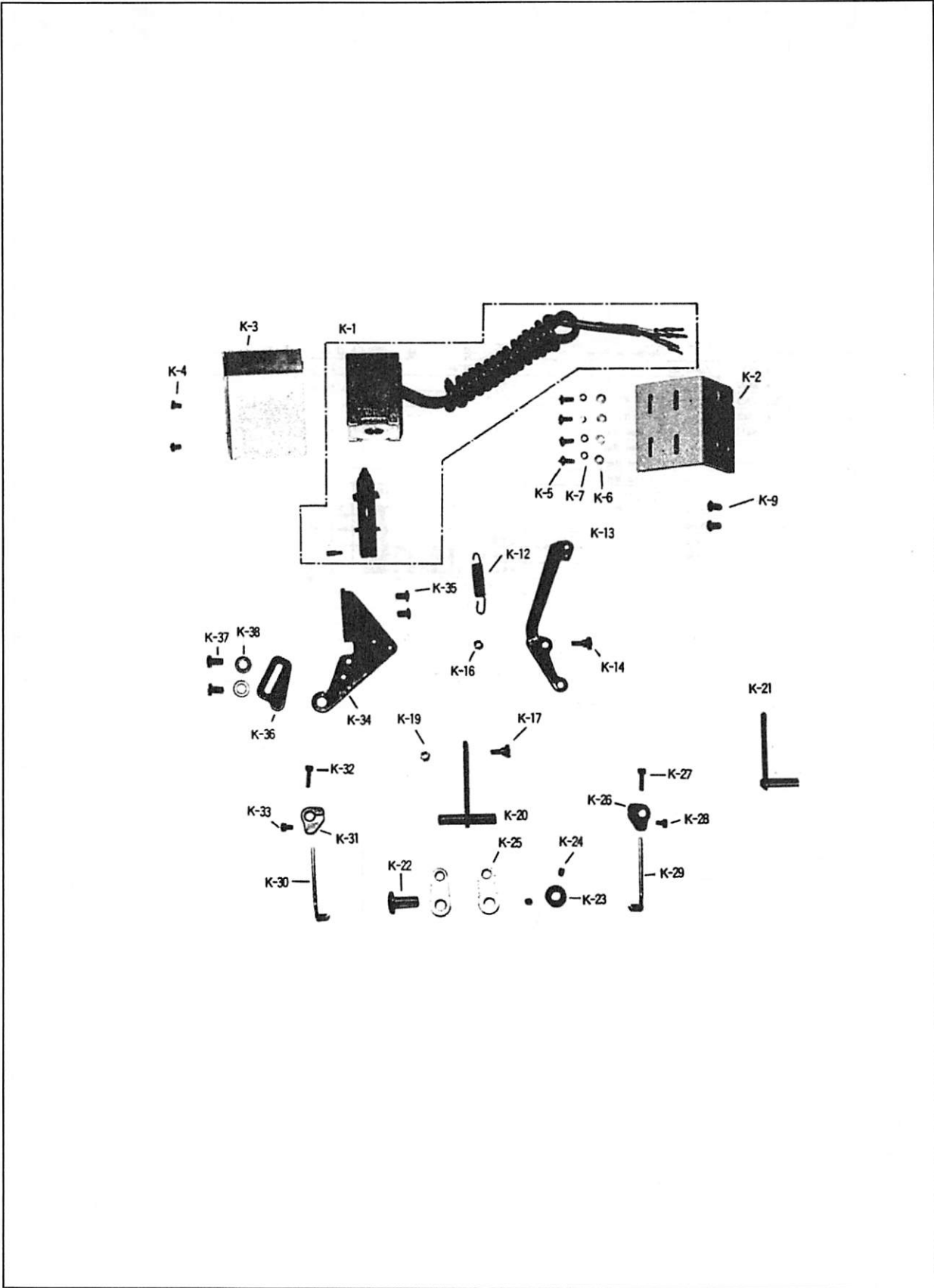
Ref. No.	Parts No.	Note	Name of Parts	품 명	Q'ty	Applied
J-1	GP-025627-00	C	Fixed Mes	고정 메스 (37728)	2	
J-2	GP-025627-00	D	Fixed Mes	고정 메스 (37728)	1	
J-3	SC-0502-2302	C	Screw (9/64"n=40)	흡불이 둥근납작 작은나사 (9/64"n=40)	4	
J-4	SC-0502-2302	D	Screw (9/64"n=40)	흡불이 둥근납작 작은나사 (9/64"n=40)	2	
J-5	10-003W-8677	C	Washer For Fixed Mes	고정 메스 첩나사 와셔	4	
J-6	10-003W-8677	D	Washer For Fixed Mes	고정 메스 첩나사 와셔	2	
J-7	CTT-BF001601	C	Holder For Fixed Mes	고정 메스 홀더	2	Jan. 18. 11
J-8	CTT-BF001601	D	Holder For Fixed Mes	고정 메스 홀더	1	Jan. 18. 11
J-9	SC-0119-7600	C	Screw (11/64"n=40)	흡불이 접시 작은나사 (11/64"n=40)	3	
J-11	10-006A-8677	C	Thread Catcher	밀실잡이	2	
J-12	10-006A-8677	D	Thread Catcher	밀실잡이	1	
J-13	SC-A121-4122	C	Screw (3/32"n=56)	흡불이 납작 작은나사 (3/32"n=56)	2	
J-14	SC-A121-4122	D	Screw (3/32"n=56)	흡불이 납작 작은나사 (3/32"n=56)	1	
J-15	10-108A-8677	C	Fixed Mes Cover	고정 메스 커버	2	
J-16	SC-A170-4124	C	Screw (9/64"n=40)	흡불이 바인딩 작은나사 (9/64"n=40)	4	
J-17	10-109A-8577	D	Fixed Mes Cover	고정 메스 커버	1	
J-18	SC-A170-4124	D	Screw (9/64"n=40)	흡불이 바인딩 작은나사 (9/64"n=40)	2	
J-19	10-111A-8670	C	Moving Knife	동메스 (37720)	2	
J-20	10-111A-8670	D	Moving Knife	동메스 (37720)	1	
J-21	SC-0211-7500	C	Screw (M4x0.7)	육각구멍불이 보울트 (M4x0.7)	3	
J-23	10-113A-8677	C	Moving Knife Shaft	동메스축(C)	2	
J-24	10-113A-8677	D	Moving Knife Shaft	동메스축(C)	1	
J-25	10-114A-8677	C	Collar For Moving Mes Shaft	동메스축 카라	2	
J-26	10-114A-8677	D	Collar For Moving Mes Shaft	동메스축 카라	1	
J-27	SC-0164-2700	C	Screw (M5)	육각구멍불이 멈춤나사 (M5)	6	
J-29	10-116A-8677	C	Bushing For Moving For Mes Shaft	동메스축 붓싱	2	
J-30	10-116A-8677	D	Bushing For Moving For Mes Shaft	동메스축 붓싱	1	
J-31	SC-0352-7400	C	Screw (3/16"n=28)	흡불이 멈춤나사 (3/16"n=28)	3	
J-33	10-118A-8677	C	Moving Knife Shaft Crank (L)	동메스축 크랭크 (좌)(C)	1	
J-34	SC-0162-5607	C	Screw (M5x0.8)	육각구멍불이 보울트 (M5x0.8)	2	
J-35#	10-120A-8677	C	Moving Knife Shaft Connection Rod	동메스 축 연결 못드(C)	1	
J-38	10-021S-8677	C	Screw For Moving Knife Shaft Rod	동메스 축 연결 못드 첩나사	1	
J-39	10-220A-8577	C	Joint For Moving Knife Shaft Rod	로드 앤드 (좌)	1	
J-40	10-033C-7507	C	Nut For Joint	볼 조인트 첩너트 (우)	1	
J-41	10-024S-8677	C	Stud Screw For J-39	동메스 축 연결 조인트 첩나사	1	
J-42	10-126A-8677	C,D	Moving Knife Shaft Crank (R)	동메스 축 크랭크 (우)	1	
J-44	10-221A-8577	C,D	Connection Joint (L) For J-42	로드 앤드 (좌)	1	
J-45	10-024S-8677	C,D	Stud Screw For J-44	동메스 축 연결 조인트 첩나사	1	
J-46	10-036C-7507	C,D	Nut (L) For J-44	볼 조인트 첩너트 (좌)	1	
J-47	10-033C-7507	C,D	Nut (R) For J-44	볼 조인트 첩너트 (우)	1	
J-48	10-034A-7507	C,D	Length Adjusting Rod	볼 조인트 연결봉 (1/16"-1/2")	1	
J-49	10-220A-8577	C,D	Joint (R) For Thread Trimming Rock Link	로드 앤드 (우)	1	
J-50	10-034S-7507	C,D	Stud Screw For J-49	요동 링크 연결 조인트 단나사	1	
J-51	07-011W-1230	C,D	Washer For J-49	가마잡이 와셔	2	
J-52	10-033C-7507	C,D	Nut (R) For J-49	볼 조인트 첩너트 (우)	1	
J-53	10-034A-8677	C,D	Thread Trimming Rock Link	사절요동 링크 (H/P)	1	
J-54	10-013A-7507	C,D	Thread Trimming Rocker Link Shaft	사절요동 링크 축	1	
J-55	10-017S-8577	C,D	Screw For J-54	동메스 축 붓싱 고정나사		
J-56	10-044R-5607	C,D	Cushion Rubber	쿠션고무 (B)	1	
J-57	10-050S-8577	C,D	Stopper Pin Screw	스토퍼 핀 나사	1	
J-59	10-033C-7507	C,D	Nut For Stopper Pin Screw	볼 조인트 첩너트 (우)	1	
J-60	41-288G-7500	C,D	Stopper Pin Return Spring	스토퍼핀 복귀 스프링	1	
J-61	10-129A-7507	C,D	Holder For Stopper Pin	사절 캠 운동 핀 홀더	1	
J-62	SC-0108-2350	C,D	Screw (M6)	육각구멍불이 보울트 (M6)	2	
J-63	01-020W-2350	C,D	Washer For J-61	싱크로 베이스 스프링 와셔 (Ø6)	2	
J-64	10-166A-7507	C,D	Roller For Thread Trimming Cam	로울러(C)	1	
J-65	10-067S-7507	C,D	Stud Screw For J-64	사절 캠 로울러 단나사	1	

NOTE:
 C=KM-867-7
 C-1=KM-867
 D=KM-857-7
 D-1=KM-857
 Refer to page 30 for items marked with an asterisk (#)



Wiper Mechanism

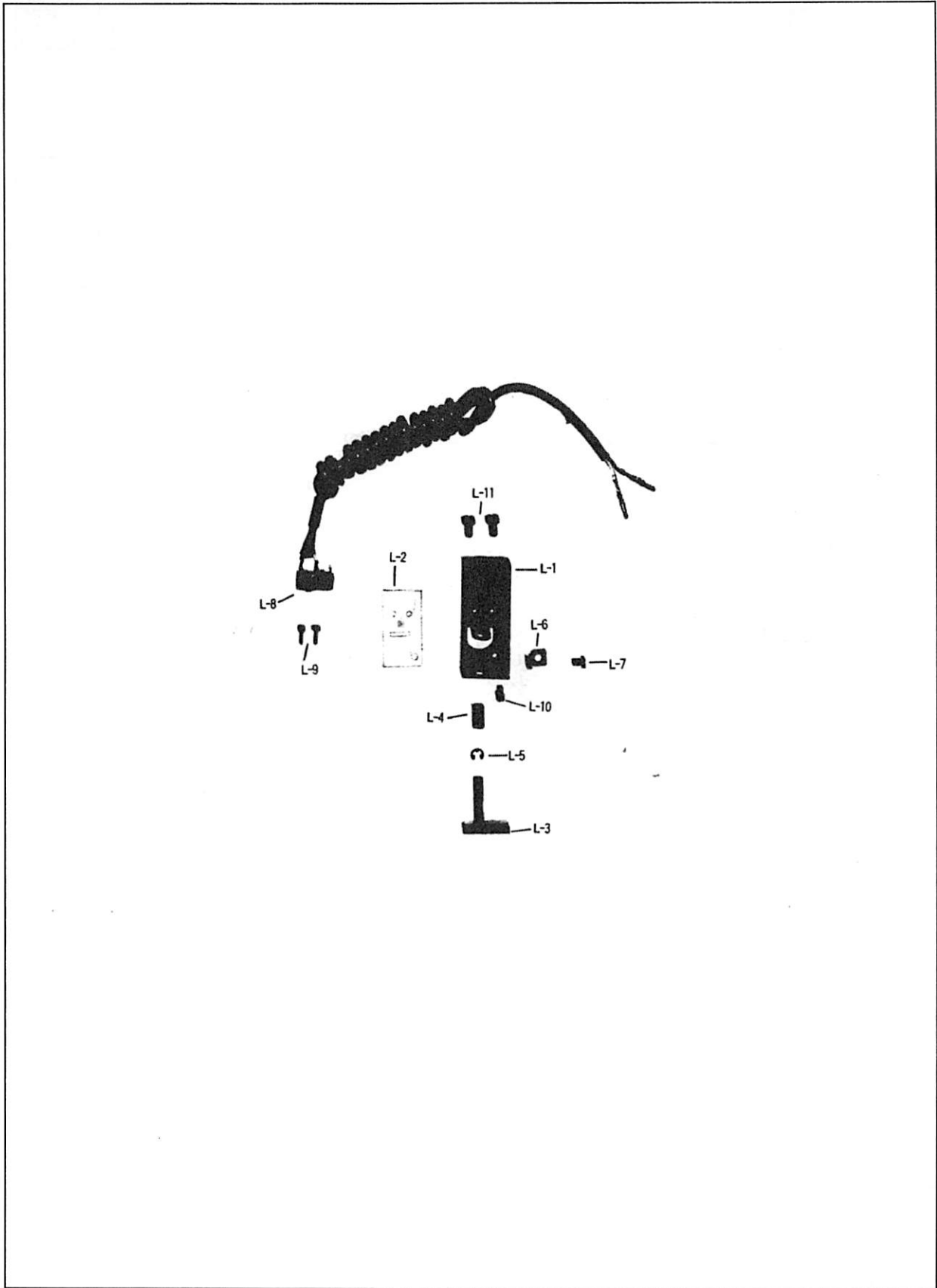
와이퍼 관계





Reverse Button Mechanism

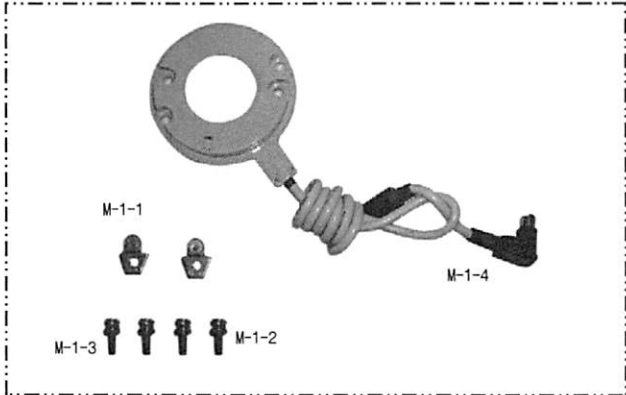
역진 버튼 관계





Synchronizer Mechanism

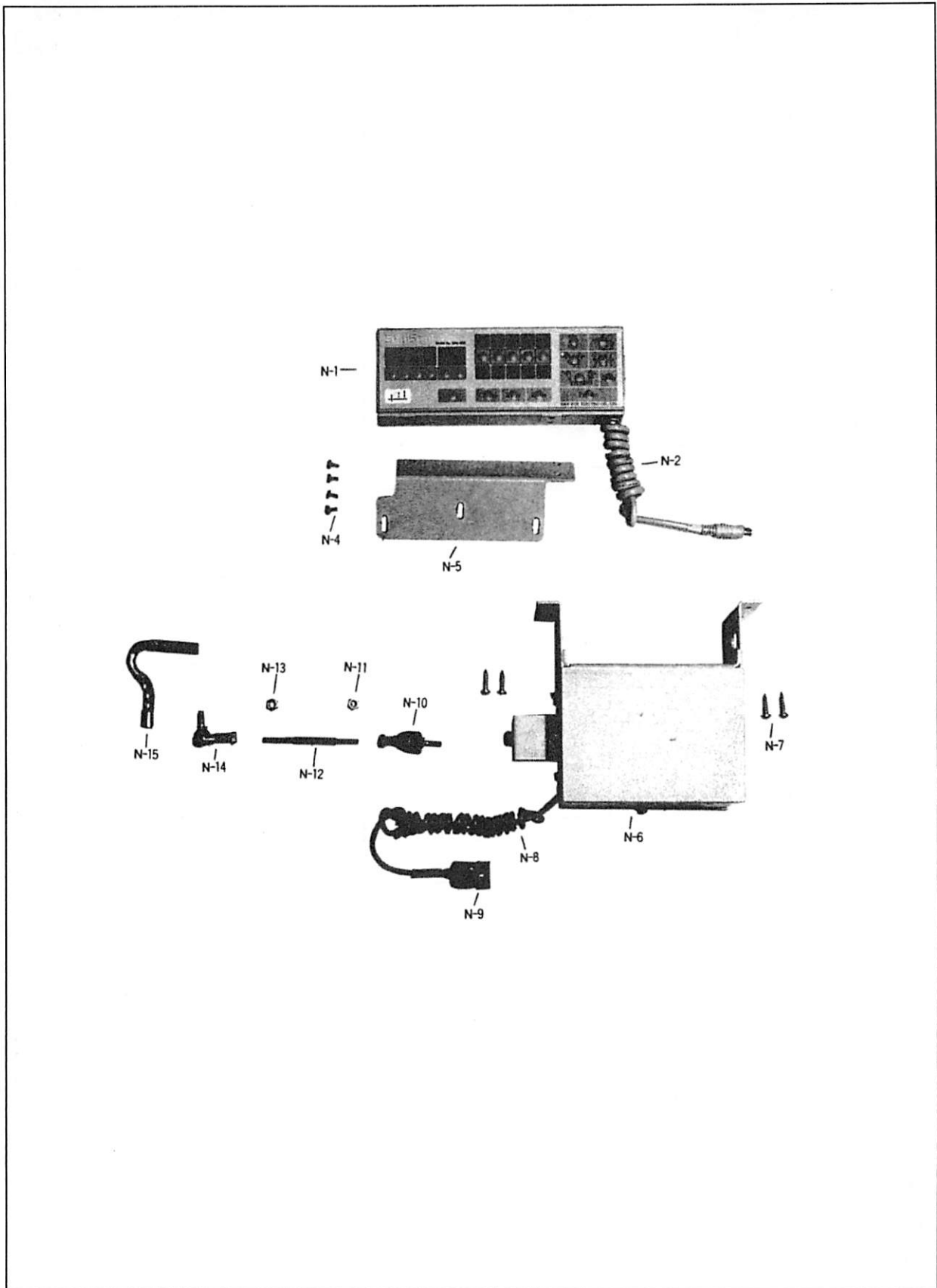
싱크로나이저 관계





Program Unit Box & Presser Foot Lifting Solenoid Mechanism

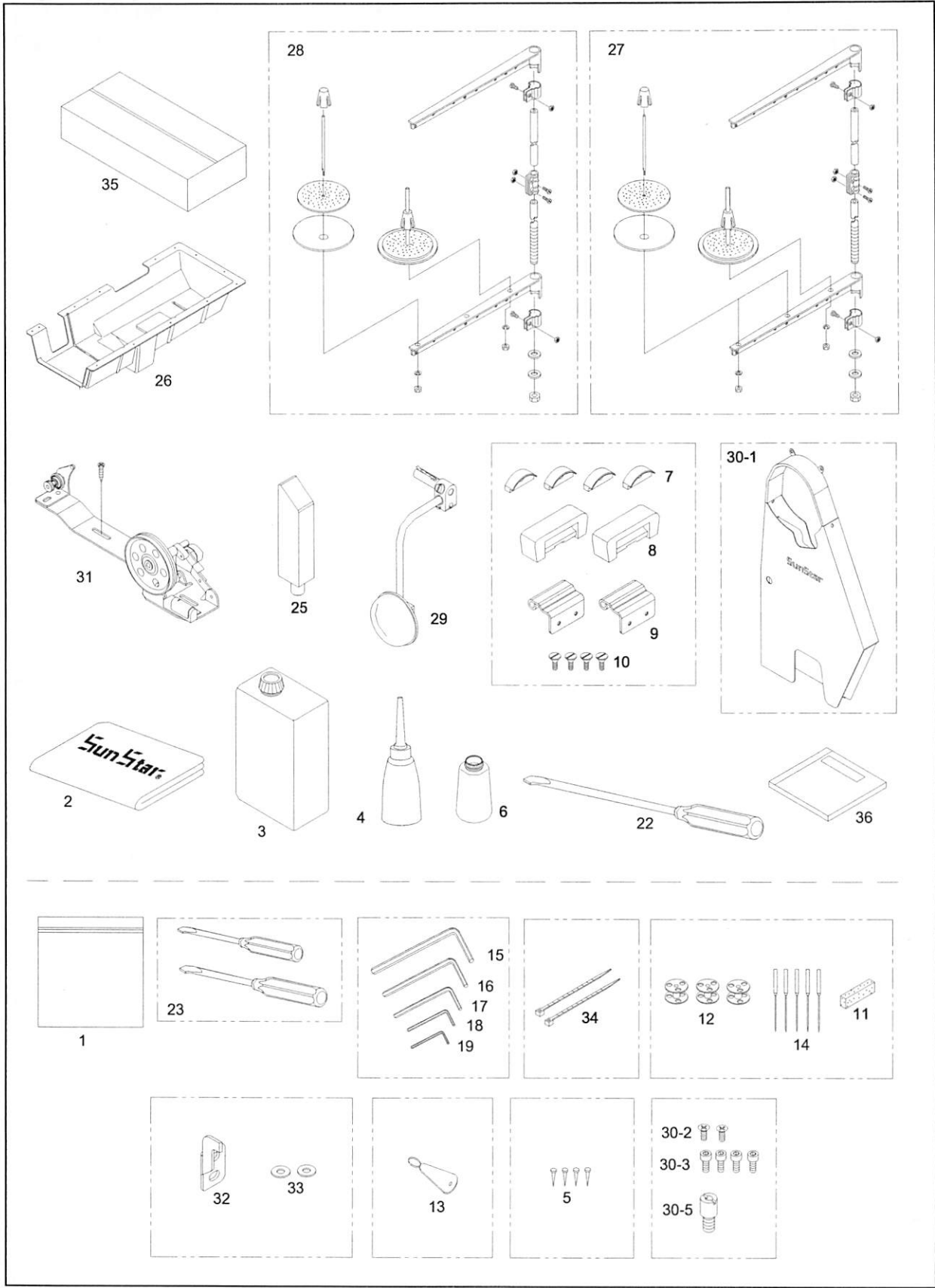
프로그램 유닛 & 노루발 올림 장치 관계



O

Accessories Mechanism

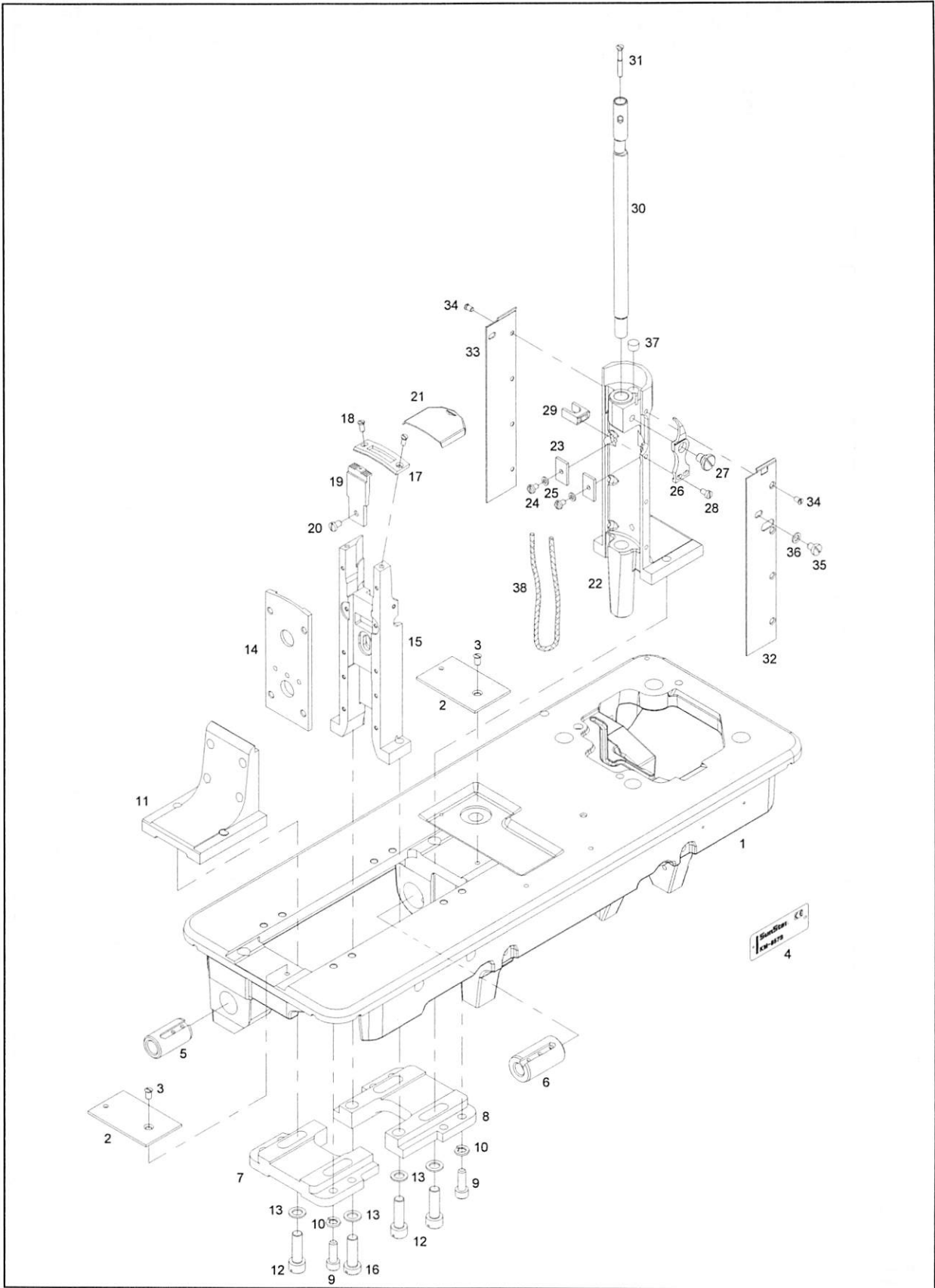
액세서리 관계





KM-857S Mechanism

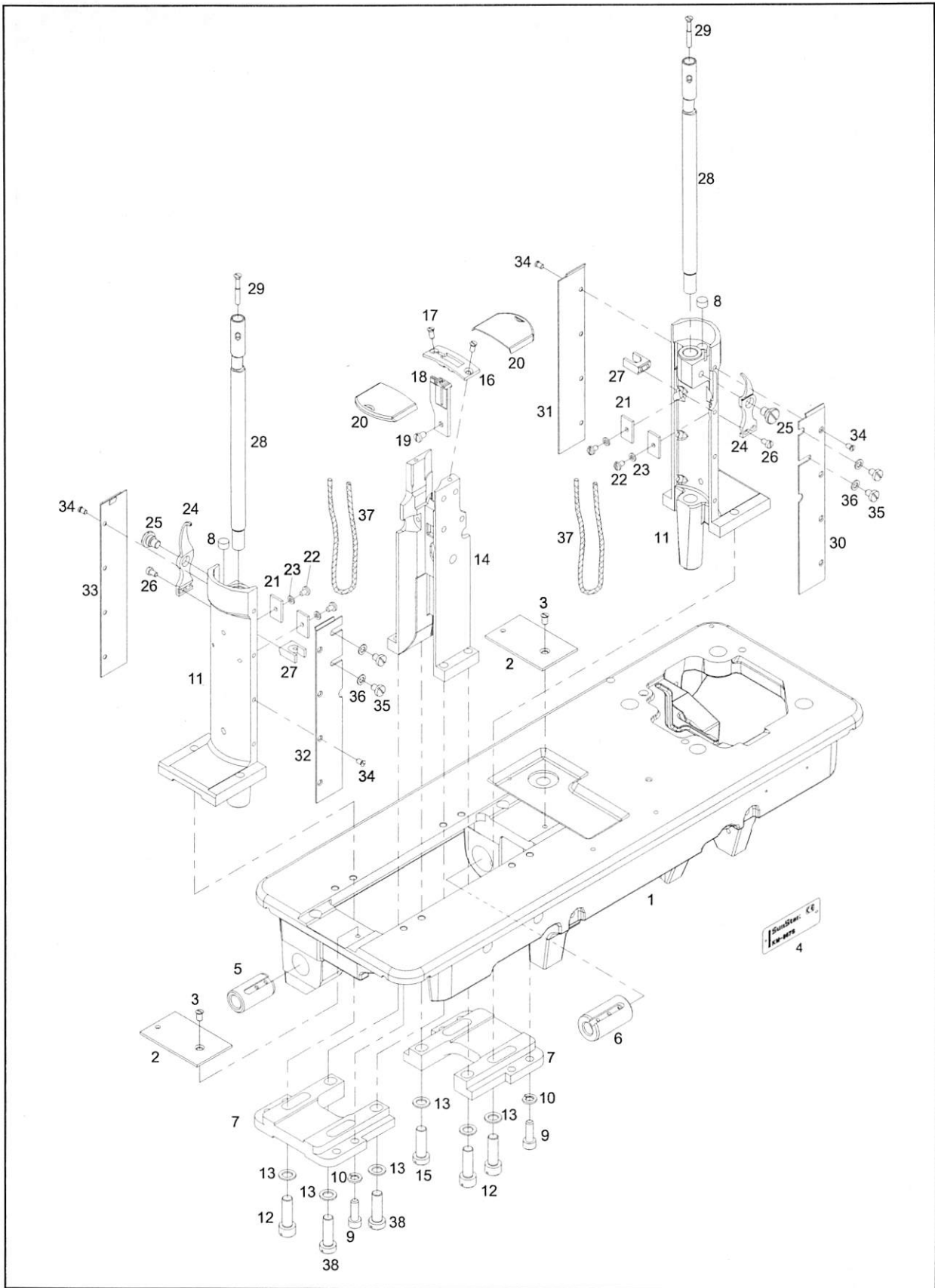
KM-857S 관계





KM-867S Mechanism





KM-867S 관계






Gauge Parts

게이지 파트

Gauge Size	Ref. No.	D-7	D-8	H-6	H-68
	Model	 Needle Clamp	 Presser Foot	 Feed Dog	 Needle Plate
1/16(1.6mm)	C	02-221A-7400	05-210A-7400	GP-048008-00	09-081A-8670
	C-1				
3/32(2.4mm)	C	02-121A-7400	05-110A-7400	06-012A-8270	09-079A-8670
	C-1				
1/8(3.2mm)	C	02-521A-7400	05-510A-7400	06-114A-8270	09-080A-8670
	C-1				
3/16(4.8mm)	C	02-321A-7400	05-310A-7400	06-112A-8270	09-082A-8670
	C-1				
1/4(6.4mm)	C	02-021A-7400	05-010A-7400	06-115A-8270	09-084A-8670
	C-1				
1"(25.4mm)	C	02-921A-7400	05-910A-7400	06-116A-8270	09-085A-8670
	C-1				



 Moving Knife Shaft Connection Rod	Ref. No.	J-35	J-36	J-37
	Model	Gauge Size 1/16" ~ 7/16" (1.6mm ~ 11.1mm)	1/16" ~ 7/16" (1.6mm ~ 11.1mm)	1/16" ~ 7/16" (1.6mm ~ 11.1mm)
	C	10-020A-8677	10-120A-8677	10-220A-8677

NOTE:

C-KM-867-7
 C-1-KM-867
 D-KM-857-7
 D-1-KM-857



Index

Parts No.	Name of Parts	Page	Ref.No.	Parts No.	Name of Parts	Page	Ref.No.	Parts No.	Name of Parts	Page	Ref.No.
01-007R-8130	Oil Cap	7	A-10	06-012P-7400	Pin For G-3	19	G-5	07-011W-1230	Washer For J-49	27	J-51
01-007S-7500	Screw(Upper) For A-3	7	A-4	06-015A-7500	Stud Screw For G-47	19	G-48	07-011W-1230	Washer For J-65	29	J-66
01-007W-7400	Washer(Upper) For A-3	7	A-5	06-018P-7400	Roller For Spring Hook	19	G-29-1	07-060A-7500	Bobbin	39	O-12
01-009R-2350	Cable Holder	7	A-65	06-019A-5607	Stud Screw For G-13	19	G-16	07-101A-8670	Lower Shaft	15	E-1
01-009R-2700	Cable Holder (6N)	7	A-27	06-020C-7400	E-Ring (Ø6)	21	G-70	07-102A-7400	Lower Shaft Front Bushing	15	E-2
01-009S-7500	Screw(Lower) For A-3	7	A-6	06-022A-5607	Stud Screw For G-17	19	G-19	07-104A-7500	Lower Shaft Middle Bushing	15	E-5
01-013S-7400	Screw (11/64"n=40)	17	F-30	06-022C-7400	Reverse Lever Stopper (Lower)	19	G-45	07-106A-7500	Bearing Bushing	15	E-7
01-014C-8130	Nut For A-41	7	A-42	06-024A-5607	Stud Screw For G-18	19	G-21	07-108A-5607	Bearing Bushing	15	E-11
01-015A-7400	Thread Retainer	7	A-11	06-024A-7500	Bearing Cover For Feed Cam	21	G-59	07-112A-5607	Bearing Presser	15	E-15
01-015A-7400	Thread Retainer	7	A-12	06-024S-7400	Screw (3/16"n=32)	19	G-10	07-142A-5607	Safety Clutch Driving Ball	15	E-17-2
01-018A-7500	Arm Thread Guide Plate (U)	7	A-16	06-024S-7400	Screw (3/16"n=32)	19	G-28	07-145G-5607	Safety Clutch Spring	15	E-17-5
01-019C-7400	Scooper For Thread Take-Up Spring	7	A-50	06-024S-7400	Screw (3/16"n=32)	25	I-4	07-148C-5607	Nut For E-17-7	15	E-17-10
01-020A-7500	Arm Thread Guide Plate (M)	7	A-17	06-024S-7400	Screw (3/16"n=32)	31	K-35	07-149C-5607	Safety Collar Washer	15	E-17-11
01-020W-2350	Washer For J-61	27	J-63	06-026A-5607	Reverse Solenoid Assembly(4)	19	G-23	07-160A-7500	Bobbin	23	H-40
01-020W-2350	Washer For J-77	29	J-79	06-027G-7400	Spring For G-3	19	G-6	07-160A-7500	Bobbin	23	H-41
01-020W-2350	Washer For Post Support Guide	17	F-32	06-032A-8670	Link For Reverse Lever Spring	19	G-29	07-221A-8670	Safety Clutch Belt Pulley	15	E-17-1
01-020W-2350	Washer For Saddle	17	F-17	06-033M-3800	E-Ring(Ø3)	15	E-23	07-243A-5607	Safety Clutch Collar	15	E-17-3
01-022A-7500	Arm Thread Guide Plate (L)	7	A-20	06-033M-3800	E-Ring(Ø3)	33	L-5	07-244C-5607	Safety Clutch Disc	15	E-17-4
01-022C-7400	Arm Thread Guide Plate (M)	7	A-18	06-033M-7400	Felt For G-49	19	G-52	07-251A-5607	Ratchet For Safety Clutch	15	E-18
01-024A-7500	Felt For Upper Thread Supply	7	A-20-1	06-033M-7400	Wick For B-6	9	B-7	07-252A-5607	Stopper Collar For G-49	19	G-50
01-030A-8677	Cable Cover	7	A-37	06-036A-7400	Needle Bearing For G-56	21	G-58	08-010B-3701	Plug For A-58	7	A-62
01-035P-1370	Machine Number Plate	7	A-39	06-040S-1600	Adjusting Screw (A) For Return Spring	29	J-83	08-014C-3701	Tube(C)	37	N-9
01-035P-7400	Pin	7	A-40	06-046W-7400	Washer For Feed Bar Shaft	21	G-81	08-101A-8130	Hinge Pin For B-1	9	B-3
01-038A-7500	Back Cover Plate	7	A-29	06-051A-8670	Feed Regulator Connecting Rod	19	G-47	08-103A-7500	Thread Take-Up Lever	9	B-1
01-101C-7500	Safety Guide	11	C-32	06-051W-7400	Washer For Feed Bar Fork	21	G-84	09-001A-8570	Post	17	F-5
02-001A-8270	Timing Belt	9	B-34	06-053M-7400	Felt For Feed Bar Fork	21	G-85	09-002A-7400	Hook Shaft Gear	23	H-64
02-002A-8670	Timing Belt Pulley (Upper)	9	B-30	06-053W-1230	Washer For G-34	19	G-37	09-002A-7400	Hook Shaft Gear	23	H-65
02-003A-2700	Band Clip	7	A-28	06-054A-5700	Vertical Feed Eccentric Cam	15	E-30	09-005C-8270	Feed Dog Lever Retainer Washer	23	H-11
02-009M-7400	Felt (A) For B-18	9	B-19	06-061A-7507	Reverse Feed Control Lever	19	G-33	09-006S-8270	Shaft Feed Dog Lever Slide Block	23	H-14
02-009M-7400	Felt(A) For B-23	9	B-28	06-062A-7500	Reverse Lever	19	G-34	09-008S-8270	Screw For Feed Dog Lever Slide Block	23	H-13
02-015C-7400	Safety Clutch Belt Pulley Ring	15	E-17-9	06-066G-7507	Reverse Lever Spring(A)	19	G-38	09-009W-8270	Washer For H-15	23	H-16
02-015C-7400	Side Ring	9	B-31	06-071S-7507	Stud Screw For G-44	19	G-43	09-023A-8577	Saddle	17	F-11
02-018G-7400	Stop Ring(C)	9	B-35	06-072R-7507	Upper Stopper Rubber For Reverse Lever	19	G-44	09-023A-8577	Saddle	17	F-12
02-019A-7400	Bearing (6204 ZZ)	9	B-36	06-086A-8677	Reverse Link	19	G-17	09-023A-8670	Saddle	17	F-13
02-020A-8670	Pulley (N)	9	B-38	06-106A-8270	Feed Bar	21	G-79	09-023A-8670	Saddle	17	F-14
02-020A-8677	Pulley (T)	9	B-37	06-107A-8670	Feed Regulator	19	G-7	09-025W-8270	Washer For Post	17	F-4
02-101A-7500	Upper Shaft(S)	9	B-9	06-107A-8677	Reverse Feed Control Shaft	19	G-11	09-025W-8270	Washer(B) For D-31	13	D-35
02-101A-7507	Upper Shaft(T)	9	B-8	06-108A-7500	Reverse Feed Control Shaft	19	G-12	09-031A-8577	Hook	23	H-34
02-103A-740L	Thread Take-Up Lever Holder	9	B-6	06-112A-7500	Feed Regulator Eccentric Wheel Shaft	19	G-9	09-031A-8577	Hook	23	H-35
02-105A-7400	Link Cam	9	B-10	06-113A-8677	Reverse Crank	19	G-13	09-036A-8570	Hook	23	H-42
02-121A-7400	Needle Clamp 3/32	13	D-7*	06-116A-8670	Feed Regulator Shaft	19	G-49	09-036A-8570	Hook	23	H-43
02-212A-7500	Upper Shaft Bushing (M)	9	B-23	06-118A-5607	Reverse Solenoid Crank	19	G-18	09-039W-8677	Hook Washer	23	H-48
04-009P-7400	Taper Pin	13	D-13-1	06-123A-8677	Reverse Solenoid Bracket	19	G-20	09-039W-8677	Hook Washer	23	H-49
04-012C-7400	Needle Bar Wick Holder (Upper)	13	D-14	06-129A-7500	Slide Block Guide Plate	21	G-64	09-042A-8670	Opener Holder	23	H-56
04-016S-7400	Stud Screw For D-24	13	D-28	06-132P-7400	Slide Block Shaft	21	G-62	09-042A-8670	Opener Holder	23	H-57
04-021C-7400	Wick Supporter	13	D-26	06-135A-7400	Feed Cam Connecting Rod	21	G-61	09-042R-7400	Cap (S) For Oil Supply Terminal	25	I-37
04-101A-8170	Needle Bar	13	D-2	06-137A-7400	Level Feed Connecting Link	21	G-66	09-049S-8670	Hook Cover Stopper	17	F-25
04-101A-8270	Needle Bar Rock Link	13	D-30	06-139A-7400	Feed Rock Shaft Bushing (R)	21	G-71	09-049S-8670	Hook Cover Stopper	17	F-26
04-104R-1230	Rubber Cap (L) For Oil Supply Terminal	25	I-36	06-140P-7400	Pin For G-67	21	G-69	09-051A-8570	Post Support	17	F-29
04-111A-7400	Needle Bar Rock Shaft Bushing (F)	13	D-22	06-141A-7400	Level Feed Crank	21	G-67	09-055A-8570	Post Cover	17	F-33
04-114A-7400	Needle Bar Rock Shaft Bushing (R)	13	D-23	06-142A-7400	Collar For G-77	21	G-73	09-057A-8670	Post Cover "A"	17	F-35
05-001A-8170	Presser Foot	11	C-9	06-143A-7400	Feed Rock Shaft Bushing (Front)	21	G-75	09-060A-8670	Post Cover "B"	17	F-38
05-004A-8570	Spring For C-2	11	C-3	06-143W-5607	Washer For G-40	19	G-39	09-063A-8570	Post Cover "C"	17	F-41
05-101A-7500	Presser Bar Bushing(L)	11	C-5	06-147A-7400	Feed Bar Shaft	21	G-80	09-066A-8570	Post Cover "D"	17	F-44
05-110A-8670	Presser Foot	11	C-8*	06-152A-7400	Feed Bar Fork	21	G-82	09-069A-8577	Post Cover "E"	17	F-47
06-001A-7500	Length Control Dial Plate	19	G-3	06-179A-5607	Feed Rock Shaft	21	G-77	09-071A-8670	Post Cover "F"	17	F-49
06-001C-7400	Oil Cap	7	A-32	07-003M-7400	Oil Felt	25	I-18	09-071A-8670	Post Cover "F"	17	F-51
06-003G-8677	Reverse Lever Return Spring	19	G-31	07-004M-7400	Felt For E-2	15	E-3	09-079A-8570	Feed Dog	23	H-7
06-008S-8270	Stud Screw For Feed Bar	23	H-18	07-007A-5607	Bearing (6904NR)	15	E-8	09-079A-8670	Needle Plate	23	H-68 *
06-010R-1230	O-Ring For G-1	19	G-2	07-009A-8670	Ratchet Button	15	E-22	09-080A-8570	Needle Plate	23	H-69
06-011G-8270	Ratchet Button Spring	15	E-21	07-011A-5607	Bearing (6004NR)	15	E-12	09-081S-8670	Screw For Needle Plate	23	H-70
06-012A-8270	Feed Dog (3/32)	23	H-6 *	07-011W-1230	Washer For A-58	7	A-64	09-107A-8270	Feed Dog Lever Slide Block	23	H-15

Index

Parts No.	Name of Parts	Page	Ref.No.	Parts No.	Name of Parts	Page	Ref.No.	Parts No.	Name of Parts	Page	Ref.No.
09-127A-8677	Bushing For Hook Shaft	23	H-20	10-220A-8577	Joint For Moving Knife Shaft Rod	27	J-39	43-007A-7500	Presser Bar Lifter Lever Stud	11	C-21
09-127A-8677	Bushing For Hook Shaft	23	H-21	10-221A-8577	Connection Joint (L) For J-42	27	J-44	43-008A-7500	Collar For C-21	11	C-20
09-128A-8670	Bushing For Hook Shaft	23	H-22	10-551S-7507	Clutch Lever Pin Screw	29	J-70	43-013A-7500	Knee Lifter Lever	11	C-27
09-128A-8670	Bushing For Hook Shaft	23	H-23	10-554A-7507	Clutch Lever	29	J-68	43-013A-7500	Spring For Presser Bar Lifter Lever	11	C-17
09-130A-8677	Hook Shaft	23	H-30	11-001A-8677	Wiper Solenoid Ass'y (4)	31	K-1	43-014S-7500	Stud Screw For C-27	11	C-26
09-130A-8677	Hook Shaft	23	H-31	11-003A-7507	Wiper Solenoid Cover	31	K-3	43-015A-5607	Knee Lifting Roller Bracket Assembly	11	C-30
09-131A-8577	Bobbin Case	23	H-73	11-013G-7507	Return Spring For K-1	31	K-12	43-015A-7500	Knee Lifter Connecting Rod	11	C-24
09-131A-8577	Bobbin Case	23	H-74	11-014A-7507	Link "A" Ass'y	31	K-13	43-016A-8670	Knee Lifter Bar	11	C-28
09-140A-8670	Opener	23	H-50	11-015S-7507	Stud Screw For K-13-3	31	K-14	43-017S-7500	Stud Screw For C-24	11	C-25
09-140A-8670	Opener	23	H-51	11-015S-7507	Stud Screw For K-21-1, K-22-1	31	K-17	43-018A-7500	Knee Lifter Assembly	11	C-31
09-142A-8677	Opener Holder	23	H-54	11-017C-7507	Nut For K-13-3	31	K-16	43-026S-8130	Screw (A) For C-31-2	11	C-31-3
09-142A-8677	Opener Holder	23	H-55	11-017C-7507	Stud Nut For K-20-1, K-21-1	31	K-19	43-027A-8130	Lever Shaft Stopper Collar	11	C-31-7
09-144A-8670	Opener Stopper	23	H-60	11-017S-7500	Nut For C-17	11	C-16	43-027G-8130	Return Spring For C-31-5	11	C-31-6
09-144A-8670	Opener Stopper	23	H-61	11-018M-2350	Plug For J-72	29	J-76	43-027S-8130	Screw (B) For C-31-2	11	C-31-4
09-146C-8577	Cover For Saddle	17	F-53	11-019M-2350	Tube For J-72	29	J-75	43-027S-8130	Screw (B) For C-31-7	11	C-31-9
09-146C-8577	Cover For Saddle	17	F-54	11-020A-2500	Magnetic Holder	35	M-1-1	43-028A-8130	Lever Shaft Bracket	11	C-31-1
10-003W-8677	Washer For Fixed Mes	27	J-5	11-021A-7507	Wiper Shaft Ass'y	31	K-20	43-029A-7500	Knee Lifter Rock Bar Lever Shaft	11	C-31-5
10-003W-8677	Washer For Fixed Mes	27	J-6	11-021A-8577	Wiper Shaft Ass'y	31	K-21	43-030P-8130	Lever Shaft Guide Pin	11	C-31-10
10-003W-8677	Washer For Fixed Mes	39	O-33	11-021S-2500	Screw For M-1-1	35	M-1-3	43-100A-7500	Knee Lifting Pad Assembly	39	O-29
10-006A-8677	Thread Catcher	27	J-11	11-022A-7507	Wiper Link Shaft	31	K-22	44-0000-1230	Oil Wick	9	B-4
10-006A-8677	Thread Catcher	27	J-12	11-022W-2500	Washer For M-1-1	35	M-1-2	44-0000-1230	Oil Wick	9	B-14
10-013A-7507	Thread Trimming Rocker Link Shaft	27	J-54	11-023A-7507	Collar For K-22	31	K-23	44-0000-1230	Oil Wick	13	D-15
10-017S-8577	Screw For J-54	27	J-55	11-026A-7507	Wiper Holder	31	K-26	44-0000-1230	Oil Wick	19	G-53
10-019S-7507	Adjusting Screw (B) For Return Spring	29	J-85	11-026A-7507	Wiper Holder	31	K-31	44-0000-1230	Oil wick	25	I-25
10-020W-2700	Washer For K-36	31	K-38	11-029A-7507	Wiper (Right)	31	K-29	44-0000-1230	Oil wick	25	I-26
10-021G-7507	Thread Trimming Return Spring	29	J-82	11-029B-7507	Wiper (Left)	31	K-30	44-0000-1230	Oil wick	25	I-27
10-021S-8677	Screw For Moving Knife Shaft Rod	27	J-38	11-030A-7507	Wiper Link Body	31	K-34	44-0000-1230	Oil wick	25	I-41
10-024S-8677	Stud Screw For J-39	27	J-41	11-032P-7507	Stopper	31	K-36	44-0000-1230	Oil wick	25	I-45
10-024S-8677	Stud Screw For J-44	27	J-45	11-102A-7507	Wiper Solenoid Bracket	31	K-2	44-0000-1230	Oil wick	25	I-49
10-033C-7507	Nut (R) For J-44	27	J-47	11-125A-7507	Wiper Link "C"	31	K-25	44-0000-1234	Oil Wick	9	B-2
10-033C-7507	Nut (R) For J-49	27	J-52	12-002A-7507	Insulation Film	33	L-2	44-001C-1230	Tube Holder Spring	25	I-28
10-033C-7507	Nut For J-65	29	J-67	12-003A-8577	Reverse Button S/W Ass'y(4)	33	L-8	44-002A-8130	Oil Pan Assembly	39	O-26
10-033C-7507	Nut For Joint	27	J-40	12-004A-7507	Spring For Reverse Button	33	L-4	44-004A-7500	Dust Protector	25	I-5
10-033C-7507	Nut For Stopper Pin Screw	27	J-59	12-006P-7507	Stopper For Reverse Button	33	L-6	44-008M-7500	Oil Seal	7	A-24
10-034A-7507	Length Adjusting Rod	27	J-48	12-013A-7507	Reverse Button Assembly	33	L-3	44-009M-7500	Oil Filter	25	I-9
10-034A-8677	Thread Trimming Rock Link	27	J-53	12-015M-2350	Cable for Auto Knee Lifting Solenoid	37	N-8	44-010C-1600	Oil Tube Pin	25	I-30
10-034S-7507	Stud Screw For J-49	27	J-50	12-1000-SE55	Synchronizer Ass'y (Servo)	35	M-1-4	44-010M-7500	Oil Seal(L) For B-23	9	B-26
10-036C-7507	Nut (L) For J-44	27	J-46	15-014A-8670	Needle Bar Rock Crank	13	D-31	44-011M-7500	Oil Seal(R) For B-23	9	B-27
10-044R-5607	Cushion Rubber	27	J-56	15-031A-5607	Stud Screw For D-31	13	D-33	44-012P-7500	Oil Tube Pin(A) For B-23	9	B-24
10-050S-8577	Stopper Pin Screw	27	J-57	15-033A-5607	Needle Bar Rock Crank Collar	13	D-34	44-013P-7500	Oil Tube Pin(B) For B-23	9	B-25
10-053S-7507	Stud Screw For Clutch Lever	29	J-69	15-035W-5607	Spring Washer For D-31	13	D-36	44-014A-7500	Oil Tank Assembly	25	I-10
10-056A-7507	Thread Trimming Solenoid Ass'y (4)	29	J-72	15-220A-7900	Slide Block	21	G-63	44-016M-7400	Oil Felt For Thread Take-Up	25	I-2
10-061S-9577	Screw (M3X0.5)	31	K-5	17-437C-7907	Tube For A-58	7	A-61	44-019M-7400	Felt (B)	25	I-16
10-061S-9577	Spring Washer For K-1	31	K-7	18-015S-5607	Nut(L)	37	N-13	44-019M-7400	Oil Felt	25	I-17
10-061S-9577	Washer For K-1	31	K-6	18-016S-5607	Nut(R)	37	N-11	44-021R-7400	Rubber Cap	7	A-9
10-067S-7507	Stud Screw For J-64	27	J-65	18-020A-5607	Ball Joint(Right)	37	N-10	44-021R-7400	Rubber Cap	25	I-13
10-108A-8677	Fixed Mes Cover	27	J-15	18-021A-5607	Ball Joint(Left)	37	N-14	44-024M-7500	Felt	39	O-11
10-109A-8577	Fixed Mes Cover	27	J-17	18-107B-9000	Auto Knee Lifter Solenoid	37	N-6	44-024M-7500	Felt For Upper Thread Supply	7	A-21
10-111A-8670	Moving Knife	27	J-19	25-004A-3200	Middle Connecting Bar	37	N-12	44-026G-7400	Tube Holder	25	I-43
10-111A-8670	Moving Knife	27	J-20	25-006A-3200	Knee Lifting Shaft	37	N-15	44-026G-7400	Tube Holder	25	I-47
10-113A-8677	Moving Knife Shaft	27	J-23	26-029A-5607	Reverse Solenoid Cover	19	G-26	44-026M-8670	Post Felt	17	F-2
10-113A-8677	Moving Knife Shaft	27	J-24	30-001M-SE55	Screw	37	N-4	44-029M-8670	Hook Shaft Felt	23	H-29
10-114A-8677	Collar For Moving Mes Shaft	27	J-25	40-002A-7500	Thread Tension Control Ass'y	7	A-47	44-030M-8670	Opener Holder Felt	23	H-58
10-114A-8677	Collar For Moving Mes Shaft	27	J-26	40-002A-7507	Thread Tension Control Ass'y	7	A-46	44-030M-8670	Opener Holder Felt	23	H-59
10-116A-8677	Bushing For Moving For Mes Shaft	27	J-29	40-002A-8570	Thread Tension Control Ass'y	7	A-49	44-058C-5607	Wick Holder For G-49	19	G-54
10-116A-8677	Bushing For Moving For Mes Shaft	27	J-30	40-002A-8577	Thread Tension Control Ass'y	7	A-48	44-070A-7500	Needle Bar Wick Holder (Lower)	13	D-16
10-118A-8677	Moving Knife Shaft Crank (L)	27	J-33	40-006A-7507	Tension Release Solenoid Ass'y(4)	7	A-58	44-072A-8670	Oil Supply Terminal Case	25	I-29
10-120A-8677	Moving Knife Shaft Connection Rod	27	J-35#	40-010A-5607	Tension Release Bar	7	A-43	44-076G-8670	Spring For Oil Supply Adjusting Screw	25	I-33
10-126A-8677	Moving Knife Shaft Crank (R)	27	J-42	41-101A-1230	Bobbin Winder Assembly	39	O-31	44-078A-8670	Gasket For Oil Supply Terminal	25	I-35
10-129A-7507	Holder For Stopper Pin	27	J-61	41-288G-7500	Stopper Pin Return Spring	27	J-60	44-081M-8670	Felt (A) For Oil Supply Terminal	25	I-38
10-166A-7507	Roller For Thread Trimming Cam	27	J-64	43-001A-640L	Presser Bar Lifter	11	C-12	44-082M-8670	Felt (B) For Oil Supply Terminal	25	I-39
10-220A-8577	Joint (R) For Thread Trimming Rock Link	27	J-49	43-005C-7500	Nut For C-18	11	C-22	44-084M-7500	Supporter For Oil Terminal Tube	25	I-53

Index

Parts No.	Name of Parts	Page	Ref.No.	Parts No.	Name of Parts	Page	Ref.No.	Parts No.	Name of Parts	Page	Ref.No.
44-094R-7500	Oil Adjusting Rubber	25	I-31	CLB-JL0066	Lubrication Felt	43	Q-8	GP-014888	Needle Bar Connecting Rod	13	D-24
44-095P-7500	Oil Adjusting Pin	25	I-32	CLB-JL0068	Lubrication Felt	41	P-23	GP-015702	Thread Trimming Cam	29	J-80
44-107M-7900	Felt For Needle Bar Frame	13	D-17	CLB-JL0068	Lubrication Felt	43	Q-21	GP-018050	Knee Lifter Rock Bar Lever	11	C-31-2
44-111C-7400	Oil Wick Setting Plate	25	I-51	CMB-LB0063	Face Plate	7	A-3	GP-018248	Lower Shaft Spiral Gear	15	E-24
44-133C-7500	Oil Cover	25	I-1	CMB-LB0133	Slide Plate	41	P-2	GP-018248	Lower Shaft Spiral Gear	15	E-27
44-144M-7500	O-Ring	25	I-12	CMB-LB0133	Slide Plate	43	Q-2	GP-018765	Auto Reverse Lever	19	G-40
44-201A-1230	Tube Holder Spring (L)	25	I-28-1	CMB-LD0359	Model Mark	41	P-4	GP-020928	Feed Cam Connecting Rod	21	G-61
60-001A-8570	Belt Cover Assembly	39	O-30-1	CMB-LD0359	Model Mark	43	Q-4	GP-020929	Feed Cam	19	G-56
60-006P-8670	Pin For Belt Cover "B"	39	O-30-5	CTT-BF0016	Holder For Fixed Mes	27	J-7	GP-021129	Needle Plate(Cap)	23	H-72 *
90-003A-8670	Head Rest	39	O-25	CTT-BF0016	Holder For Fixed Mes	27	J-8	GP-022421	Lever For Feed Dog	23	H-1
91-001C-1230	Accessory Bag	39	O-1	DBS-DA0504	Bushing	41	P-5	GP-022421	Lever For Feed Dog	23	H-5
91-001C-8270	Head Cover	39	O-2	DBS-DA0504	Bushing	43	Q-5	GP-022450	Oil	39	O-3
91-002C-1230	Driver (Large)	39	O-22	DBS-DA0505	Bushing	41	P-6	GP-022654	Reverse Button Case	33	L-1
91-002C-7400	Oiler	39	O-6	DBS-DA0505	Bushing	43	Q-6	GP-025414	Presser Bar Lifter Crank	11	C-14
91-004C-7400	Head Hinge	39	O-9	DSC-AC0026	Bolt	41	P-9	GP-025423	Presser Bar Lifter Lever	11	C-18
91-007A-2302	Thread Stand Assembly	39	O-28	DSC-AC0026	Bolt	43	Q-9	GP-025627	Fixed Mes	27	J-1
91-007C-7400	Needle Thread Inserting Guide	39	O-13	DSC-BA0009	Screw	41	P-24	GP-025627	Fixed Mes	27	J-2
91-008A-7400	Thread Stand Assembly	39	O-27	DSC-BA0009	Screw	43	Q-22	GP-025627	Fixed Mes	39	O-32
91-011C-1230	Oil Tank	39	O-4	DSC-BB0007	Screw (1/8"n=44)	17	F-36	GP-025689	Post	17	F-1
91-027B-3000	Screw	37	N-7	DSC-BB0009	Screw	41	P-18	GP-028266	Upper Shaft Bushing (F)	9	B-18
91-103R-7400	Head Cushion	39	O-7	DSC-BB0009	Screw	43	Q-17	GP-031775	Presser Bar	11	C-6
91-106R-7400	Rubber Cushion	39	O-8	DSC-BB0020	Screw	41	P-34	GP-034901	Oil Hose (Feed Regulator Shaft)	25	I-23
99-011M-8570	Inner Box	39	O-35	DSC-BB0020	Screw	43	Q-34	GP-034901	Oil Hose (Ø 3)	25	I-21
AS-004803	Needle Bar Frame	13	D-13	DSC-BB0088	Screw	41	P-31	GP-034901	Oil Hose (Oil Supply Terminal)	25	I-24
AS-005069	Arm, Arm Base, Bed Ass'y	7	A-1	DSC-BB0088	Screw	43	Q-29	GP-034901	Oil Hose (S)	25	I-20
AS-005070	Arm, Arm Base, Bed Ass'y	7	A-2	DSC-BC0010	Screw	41	P-3	GP-034901	Oil Hose (Thread Take-Up)	25	I-22
CA-000479	P/U Connector Cable(SE-013)	37	N-2	DSC-BC0010	Screw	43	Q-3	GP-034901	Oil Hose For Feed Rock Bushing (F)	25	I-50
CAB-AB0121	Bed	41	P-1	DSC-BF0225	Screw	43	Q-38	GP-034901	Oil Hose For Lower Shaft Bushing (F)	25	I-42
CAB-AB0121	Bed	43	Q-1	DSC-BF0233	Screw	41	P-12	GP-034901	Oil Hose For Lower Shaft Bushing (M)	25	I-46
CGA-GA0309	Needle Plate	43	Q-16	DSC-BF0233	Screw	43	Q-12	GP-034904	Oil Hose (L)	25	I-19
CGA-GA0310	Needle Plate	41	P-17	DSC-BF0234	Screw	41	P-16	GP-037285	Trimming Solenoid Bracket	29	J-77
CGA-GB0227	Feed Dog	43	Q-18	DSC-BF0234	Screw	43	Q-15	GP-051359	PU Bracket	37	N-5
CGA-GB0240	Feed Dog	41	P-19	DSC-BJ0002	Screw	41	P-20	GP-053166	Thread Take-Up Lever	9	B-1
CHB-BA0065	Post Support	43	Q-11	DSC-BJ0002	Screw	43	Q-19	PN-000277	Needle Bar Crank Shaft	9	B-13
CHB-BA0065	Saddle	41	P-22	DSC-BJ0014	Screw	41	P-28	PTC-AG0001	Clip	39	O-34
CHB-BA0066	Post	41	P-15	DSC-BJ0014	Screw	43	Q-26	PTL-AB0001	L Wrench (2mm)	39	O-19
CHB-BA0067	Post Support	41	P-11	DSC-BJ0083	Screw	41	P-35	PTL-AB0002	L Wrench (5mm)	39	O-15
CHB-BA0068	Post	43	Q-14	DSC-BJ0083	Screw	43	Q-35	PTL-AB0003	L Wrench (2.5mm)	39	O-18
CHB-BK0010	Connecting Block	41	P-8	DSC-FD0041	Hinge Screw	41	P-27	PTL-AB0004	L Wrench (4mm)	39	O-16
CHB-BK0010	Connecting Block	43	Q-7	DSC-FD0041	Hinge Screw	43	Q-25	PTL-AB0005	L Wrench (3mm)	39	O-17
CHB-BK0011	Connecting Block	41	P-7	DWS-AA0029	Washer	41	P-13	PTL-BA0002	Driver (Middle, Small)	39	O-23
CHB-BK0012	Opener Slide Block	41	P-29	DWS-AA0029	Washer	43	Q-13	PWS-CA0005	Spring Washer	41	P-10
CHB-BK0012	Opener Slide Block	43	Q-27	DWS-AA0038	Washer	41	P-25	PWS-CA0005	Spring Washer	43	Q-10
CHB-HN0014	Opener	41	P-26	DWS-AA0038	Washer	43	Q-23	SC-001792	Stud Screw For C-27	11	C-26
CHB-HN0014	Opener	43	Q-24	DWS-AA0095	Washer	41	P-36	SC-0105-7500	Screw (M4)	31	K-24
CHB-KF0008	Hook Shaft	41	P-30	DWS-AA0095	Washer	43	Q-36	SC-0106-7400	Screw (15/64"n=28)	21	G-83
CHB-KF0008	Hook Shaft	43	Q-28	EE-001523	S-5 P/U Board Ass'y	37	N-1	SC-0107-4111	Screw (M6x1.0)	11	C-31-8
CHB-LA0043	Post Cover	41	P-14	GP-009185	Model Mark (KM-867-7)	7	A-33	SC-0108-2350	Screw (M6)	17	F-15
CHB-LA0044	Post Cover(F)	41	P-32	GP-009190	Model Mark (KM-867)	7	A-34	SC-0108-2350	Screw (M6)	17	F-16
CHB-LA0045	Hook Cover	41	P-21	GP-009191	Model Mark (KM-857)	7	A-36	SC-0108-2350	Screw (M6)	17	F-31
CHB-LA0045	Hook Cover	43	Q-20	GP-009193	Model Mark (KM-857-7)	7	A-35	SC-0108-2350	Screw (M6)	27	J-62
CHB-LA0045	Post Cover(R)	41	P-33	GP-009931	Oil Tube Choke Plate	25	I-3	SC-0109-2350	Screw (M6)	29	J-78
CHB-LA0050	Post Cover "A"	43	Q-32	GP-010086	Hook Cover	17	F-19	SC-0113-3400	Screw (11/64"n=40)	11	C-19
CHB-LA0051	Post Cover "B"	43	Q-30	GP-010086	Hook Cover	17	F-20	SC-0118-7400	Screw (1/4"n=24)	39	O-10
CHB-LA0052	Post Cover "C"	43	Q-31	GP-010087	Hook Cover	17	F-22	SC-0119-7600	Screw (11/64"n=40)	27	J-9
CHB-LA0053	Post Cover "D"	43	Q-33	GP-010087	Hook Cover	17	F-21	SC-0122-1230	Screw (15/64"n=28)	19	G-15
CHK-HA0018	Hook Shaft	23	H-32	GP-010087	Hook Cover	17	F-21	SC-0122-1230	Screw (15/64"n=28)	19	G-30
CHK-HA0018	Hook Shaft	23	H-33	GP-01090	Post Cover "A"	17	F-35	SC-0123-1230	Screw (9/32"n=28)	9	B-11
CL-000244	Safety Clutch Collar	15	E-17-3	GP-011730	Needle Bar Thread Guide	13	D-3	SC-0124-7400	Screw (9/32"n=28)	9	B-12
CLB-JD0012	Oil Wick	41	P-38	GP-012781	Reverse Feed Control Lever	19	G-33	SC-0125-5607	Screw (3/32"n=56)	13	D-4
CLB-JD0012	Oil Wick	43	Q-37	GP-013204	Presser Bar Holder	11	C-10	SC-0126-3800	Screw (3/32"n=56)	33	L-9
CLB-JL0066	Lubrication Felt	41	P-37	GP-013234	Thread Take Up Cover	7	A-7	SC-0128-7400	Screw (11/64"n=40)	21	G-78
				GP-013504	Feed Regulator Dial Shaft	19	G-1				

Index

Parts No.	Name of Parts	Page	Ref.No.	Parts No.	Name of Parts	Page	Ref.No.	Parts No.	Name of Parts	Page	Ref.No.
SC-0129-7400	Screw (1/4"n=40)	21	G-74	SC-0523-7400	Screw (1/4"n=28)	13	D-32	SN-0101-1600	Nut (3/16"n=32)	23	H-19
SC-0132-7500	Screw (M3)	31	K-28	SC-0531-2302	Screw (9/64"n=40)	7	A-51	SN-0101-1610	Nut (11/64"n=40)	29	J-84
SC-0132-7500	Screw (M3)	31	K-33	SC-0531-2302	Screw (9/64"n=40)	7	A-66	SN-0107-1230	Nut (9/32"n=28)	13	D-37
SC-0141-8670	Screw (1/4"n=28)	25	I-34	SC-0531-2302	Screw (9/64"n=40)	13	D-27	SN-0109-3710	Nut	13	D-29
SC-0147-8270	Screw (M5x0.8)	23	H-44	SC-0531-2302	Screw (9/64"n=40)	25	I-48	SN-0116-3400	Nut (1/4"n=40)	17	F-10
SC-0148-2302	Screw (9/32"n=28)	11	C-23	SC-0531-2302	Screw (9/64"n=40)	25	I-52	SN-0116-8270	Nut (1/4"n=40)	23	H-17
SC-0150-2500	Screw (15/64"n=40)	9	B-39	SC-0531-2302	Screw (9/64"n=40)	25	I-54	SN-0121-7400	Nut (15/64"n=28)	7	A-13
SC-0155-7400	Screw (9/64"n=40)	15	E-16	SC-0531-2302	Screw (9/64"n=40)	31	K-4	SN-0121-7400	Nut (15/64"n=28)	7	A-14
SC-0158-3710	Screw (9/64"n=40)	7	A-44	SC-0531-2302	Screw (9/64"n=40)	33	L-7	-	CD Manual	39	O-36
SC-0158-3710	Screw (9/64"n=40)	11	C-15	SC-0531-4125	Screw (9/64"n=40)	25	I-44	-	Nail	39	O-5
SC-0158-3710	Screw (9/64"n=40)	39	O-30-2	SC-0536-7500	Screw (3/32"n=56)	7	A-20-2	-	Needle	13	D-5
SC-0160-5607	Screw (9/64"n=40)	13	D-9	SC-0537-8260	Screw (3/16"n=32)	17	F-55	-	Needle	13	D-8
SC-0161-8677	Screw (9/64"n=40)	23	H-47	SC-0542-1230	Screw (11/64"n=40)	11	C-29	-	Needle	39	O-14
SC-0162-5607	Screw (M5x0.8)	7	A-63	SC-0543-2302	Screw (11/64"n=40)	7	A-38	-	Synchronizer Ass'y	35	M-1
SC-0162-5607	Screw (M5x0.8)	27	J-34	SC-0543-2302	Screw (11/64"n=40)	19	G-46				
SC-0164-2700	Screw (15/64"n=28)	11	C-13	SC-0543-2302	Screw (11/64"n=40)	21	G-65				
SC-0164-2700	Screw (M5)	27	J-27	SC-0543-2302	Screw (11/64"n=40)	23	H-12				
SC-0174-1230	Screw (11/64"n=40)	11	C-11	SC-0543-2302	Screw (11/64"n=40)	33	L-11				
SC-0175-1230	Screw (11/64"n=40)	23	H-10	SC-0543-4525	Screw (11/64"n=40)	39	O-30-3				
SC-0179-3710	Screw (11/64"n=40)	7	A-30	SC-0549-2302	Screw (1/8"n=44)	17	F-27				
SC-0179-3710	Screw (11/64"n=40)	7	A-45	SC-0549-2302	Screw (1/8"n=44)	17	F-28				
SC-0179-3710	Screw (11/64"n=40)	31	K-9	SC-0549-2302	Screw (1/8"n=44)	19	G-55				
SC-0185-1230	Screw (3/16"n=32)	19	G-36	SC-0549-2302	Screw (1/8"n=44)	19	G-55				
SC-0186-1230	Screw (3/16"n=32)	19	G-35	SC-0551-5607	Screw (1/4"n=28)	19	G-22				
SC-0188-1230	Screw (5/16"n=24)	9	B-40	SC-A117-4417	Screw (1/4"n=40)	9	B-32				
SC-0193-1230	Screw (3/16"n=28)	19	G-4	SC-A117-4417	Screw (1/4"n=40)	15	E-9				
SC-0195-7507	Screw (M4x0.7)	33	L-10	SC-A117-4417	Screw (1/4"n=40)	15	E-13				
SC-020S-7400	Screw For D-24	13	D-25	SC-A117-4417	Screw (1/4"n=40)	15	E-19				
SC-0211-7500	Screw (M4x0.7)	27	J-21	SC-A117-4417	Screw (1/4"n=40)	15	E-26				
SC-0253-7400	Screw (1/4"n=24)	21	G-68	SC-A117-4417	Screw (1/4"n=40)	19	G-8-1				
SC-0296-3900	Screw (3/16"n=32)	19	G-14	SC-A117-4417	Screw (1/4"n=40)	19	G-41				
SC-0298-7500	Screw (M3x0.5)	31	K-27	SC-A121-4122	Screw (3/32"n=56)	27	J-13				
SC-0298-7500	Screw (M3x0.5)	31	K-32	SC-A121-4122	Screw (3/32"n=56)	27	J-14				
SC-0302-8260	Screw (11/64"n=40)	23	H-71	SC-A131-4522	Screw (1/8"n=44)	13	D-6				
SC-0307-1230	Screw (3/16"n=32)	19	G-24	SC-A131-4522	Screw (1/8"n=44)	23	H-52				
SC-0307-1230	Screw (3/16"n=32)	25	I-40	SC-A131-4522	Screw (1/8"n=44)	23	H-53				
SC-0307-4122	Screw (11/64"n=40)	25	I-14	SC-A170-4124	Screw (9/64"n=40)	17	F-23				
SC-0315-2302	Screw (9/64"n=40)	11	C-7	SC-A170-4124	Screw (9/64"n=40)	17	F-24				
SC-0317-2700	Screw (15/64"n=28)	19	G-51	SC-A170-4124	Screw (9/64"n=40)	17	F-50				
SC-0329-8130	Screw (M8x1.25)	7	A-41	SC-A170-4124	Screw (9/64"n=40)	17	F-52				
SC-0344-8260	Screw (5/16"n=24)	17	F-3	SC-A170-4124	Screw (9/64"n=40)	27	J-16				
SC-0352-7400	Screw (3/16"n=28)	27	J-31	SC-A170-4124	Screw (9/64"n=40)	27	J-18				
SC-0356-4115	Screw (M10x1.25)	15	E-17-6	SC-A301-4119	Safety Collar Washer Screw	15	E-17-12				
SC-0367-3400	Screw (9/16"n=20)	11	C-2	SC-A301-4119	Screw (9/64"n=40)	21	G-60				
SC-0501-2302	Screw (11/64"n=40)	17	F-34	SC-A301-4119	Screw (9/64"n=40)	21	G-87				
SC-0502-2302	Screw (9/64"n=40)	7	A-8	SC-A308-4517	Screw (1/4"n=40)	9	B-15				
SC-0502-2302	Screw (9/64"n=40)	25	I-6	SC-A308-4517	Screw (1/4"n=40)	9	B-33				
SC-0502-2302	Screw (9/64"n=40)	27	J-3	SC-A308-4517	Screw (1/4"n=40)	15	E-10				
SC-0502-2302	Screw (9/64"n=40)	27	J-4	SC-A308-4517	Screw (1/4"n=40)	15	E-14				
SC-0504-1230	Screw (1/4"n=40)	17	F-9	SC-A308-4517	Screw (1/4"n=40)	15	E-17-8				
SC-0507-1230	Screw (15/64"n=28)	9	B-20	SC-A308-4517	Screw (1/4"n=40)	15	E-20				
SC-0507-1230	Screw (15/64"n=28)	9	B-29	SC-A308-4517	Screw (1/4"n=40)	15	E-25				
SC-0507-1230	Screw (15/64"n=28)	11	C-4	SC-A308-4517	Screw (1/4"n=40)	19	G-8				
SC-0507-1230	Screw (15/64"n=28)	15	E-4	SC-A308-4517	Screw (1/4"n=40)	19	G-42				
SC-0507-1230	Screw (15/64"n=28)	15	E-6	SC-A308-4517	Screw (1/4"n=40)	21	G-57				
SC-0507-1230	Screw (15/64"n=28)	21	G-72	SC-A308-4517	Screw (1/4"n=40)	29	J-81				
SC-0507-1230	Screw (15/64"n=28)	21	G-76	SC-A550-4517	Screw (1/4"n=40)	9	B-16				
SC-0508-1230	Screw (15/64"n=28)	9	B-5	SC-A550-4517	Screw (1/4"n=40)	15	E-31				
SC-0508-1230	Screw (15/64"n=28)	23	H-26	SC-A550-4517	Screw (1/4"n=40)	23	H-66				
SC-0508-1230	Screw (15/64"n=28)	23	H-62	SN-0100-3400	Nut (9/16"n=20)	11	C-1				
SC-0517-8670	Screw (1/8"n=44)	17	F-42	SN-0101-1600	Nut (11/64"n=40)	19	G-16-1				
SC-0519-2302	Screw (9/64"n=40)	7	A-15	SN-0101-1600	Nut (11/64"n=40)	29	J-71				