

PARTS BOOK

KM-340BL

고속 1본침 본봉 상하송 재봉기
High Speed, 1-Needle, Upper and Lower
Feed Lock Stitch Machine W/Large Hook



PME-100707

SunStar CO., LTD.

INFORMATION

A. Parts Book 구성 Structure of Part Book

① **A** Machine Body Mechanism
두부 및 외장 관계

④ ⑤ ⑥ ⑦ ⑧ ⑨

| No. | Parts No. | Note. | Name of Parts | 품 명 | Q'ty BS BB | Assembly No. |
|------|--------------|-------|--------------------------------|-----------------|---------------|-----------------|
| A-52 | 418028-00H1 | | Bobbin Winder Lever | 실감기 레버 | 1 | 1 |
| A-53 | 418018-00H1 | | Bobbin Winder Adjusting Plate | 실감기 조절판 | 1 | 1 |
| A-54 | SC-6130-1230 | | Screw(1.6" n=40) | 볼트(1.6" n=40) | 1 | 1 |
| A-55 | 02-011W-2302 | | Washer | 와셔 | 1 | 1 |
| A-56 | 418028-00H1 | | Bobbin Winder Lever Shaft | 실감기 레버 축 | 1 | 1 |
| A-57 | 418048-00H1 | | Bobbin Winder Adjusting Cam | 실감기 조절 캠 | 1 | 1 |
| A-58 | 030250-4413 | | Screw(M4xP6.3) | 볼트(4x6.3) | 1 | 1 |
| A-59 | 04-006C-2310 | | E-Ring(#5) | E-링(호칭용 5) | 2 | 2 |
| A-60 | 418028-00H1 | | Bobbin Winder Action Plate | 실감기 작동판 | 1 | 1 |
| A-61 | 41-088A-120H | | Bobbin Winder Action Body | 실감기 작동체 | 1 | 1 |
| A-62 | 40-007W-1000 | | Washer | 와셔 | 2 | 2 |
| A-63 | 418028-00H1 | | Bobbin Winder Spring | 실감기 원장 스프링 | 1 | 1 |
| A-64 | 418028-00H1 | | Bobbin Stopper | 보빈 스톱퍼 | 1 | 1 |
| A-65 | 418028-00H1 | | Screw | 볼트(1.6" n=40) | 5 | 5 |
| A-66 | 418028-00H1 | | Bobbin Stand | 보빈 스탠드 | 1 | 1 |
| A-67 | 418028-00H1 | | Bobbin Winder Mn | 실감기 메스 | 1 | 1 |
| A-68 | SC-6130-1230 | | Screw(1.6" n=40) | 고장체스 강력 고정나사 | 2 | 2 |
| A-69 | 418028-00H1 | | Thread Tension Adjusting Ass'y | 실감기 실감력 조절장치(조) | 1Set | 1Set |
| A-70 | 418028-00H1 | | Thread Tension Adjusting Shaft | 실감기 실감력 조절 축 | 1 | 1 |
| A-71 | 418028-00H1 | | Thread Guide Plate | 실감안내 판 | 1 | 1 |
| A-72 | 40-204A-1230 | | Thread Tension Disk | 실감안내 원 | 2 | 2 |
| A-73 | 40-330G-123A | | Thread Tension Spring | 실감력 조절 스프링 | 1 | 1 |
| A-74 | 40-800W-1230 | | Thread Tension Spring Stopper | 실감력 조절 스프링 스톱퍼 | 1 | 1 |
| A-75 | 40-024A-1230 | | Spring Cover | 스프링 커버 | 1 | 1 |
| A-76 | 40-204A-2250 | | Thread Tension Nut | 실감력 조절 너트 | 1 | 1 |
| A-77 | SN-0131-1400 | | Nut(15/16" n=20) | 실감력 조절 축 너트 | 1 | 1 |
| A-78 | 018048-00H1 | | Safety Plate Ass'y | 안전판(조) | 1Set | 1Set |
| A-79 | 018048-00H1 | | Safety Plate | 안전판 | 1 | 1 |
| A-80 | 018048-00H1 | | Safety Plate Bracket | 안전판 브라켓 | 1 | 1 |
| A-81 | 018048-00H1 | | Safety Plate Holder | 안전판 홀더 | 1 | 1 |
| A-82 | 018048-00H1 | | Safety Plate Hinge Screw | 안전판 힙나사 | 1 | 1 |
| A-83 | SN-0101-1400 | | Nut(1/16" n=20) | 니트 | 3 | 3 |
| A-84 | 40-007W-1000 | | Washer | 와셔 | 1 | 1 |
| A-85 | 018048-00H1 | | Safety Plate Spring | 안전판 스프링 | 1 | 1 |
| A-86 | 018048-00H1 | | Safety Plate Spring Hook | 안전판 스프링 걸이 | 1 | 1 |
| A-87 | SN-0111-1600 | | Nut(1/16" n=20) | 니트 | 1 | 1 |
| A-88 | GP-012250-02 | | Bolt Cover | 보트커버 | 1 | 1 |
| A-89 | SC-9465-1230 | | Screw(11/16" n=40) | 볼트(11/16" n=40) | 7 | 7 |
| A-90 | GP-012254-00 | | X-Driving Motor Cover | X 구동 모터 커버 | 1 | 1 |
| A-91 | GP-012217-00 | | Side Cover | 옆뚜껑 | 1 | 1 |
| A-92 | GP-012215-00 | | Side Cover Gasket | 옆뚜껑 가스켓 | 1 | 1 |

- ① 관계 별 고유 코드
Unique code by mechanism
- ② 관계 별 고유 명칭
Unique name by mechanism
- ③ 관계도
Explode view
- ④ Ref. No. : 파트별 고유 식별 번호
Unique identification number by part
- ⑤ Parts No. : 고유 제품 코드
Unique Product code

- ⑥ Note. : 공지사항 표기 및 메모
Refers to notice and memo
- ⑦ 품명 : 파트의 고유 품명
Name of Part : Unique name of parts
- ⑧ Q'ty : 파트의 수량
The numer of parts
- ⑨ Assembly no. : 조(組) 파트의 식별 번호
Unique identification number by set part

Ex)

| 구분 Category | Code | 비고 Category |
|------------------|--------------|------------------------------|
| 구 부품 Old part | 01-030C-1230 | |
| 신 부품 New part | AS-000000-00 | 조(組)파트 Set parts |
| | GP-000000-00 | 기구적 파트 Instrumental parts |
| | EP-000000-00 | 전기적 파트 Electrical parts |

WARNING

1. 조에 속한 파트는 개별 조립 시 제품의 파손 또는 재봉 불량 발생될 수 있어 해당 파트에 대한 주문 시에는 조 품목으로만 구입이 가능합니다.
2. 본 책자는 Part Book으로 제작되었으므로 매뉴얼로 사용 불가합니다.
3. 사전 예고 없이 사양이 변경 될 수도 있습니다.

1. The parts classified as ass'y items may cause damage to the machine or bad sewing when they are separately assembled. Hence, when they are ordered, they can be purchased as ass'y items only.
2. This is a parts book. It cannot be used as a manual.
3. Parts are Subject to change in Design Without Prior Notice.

CONTENTS

목 차

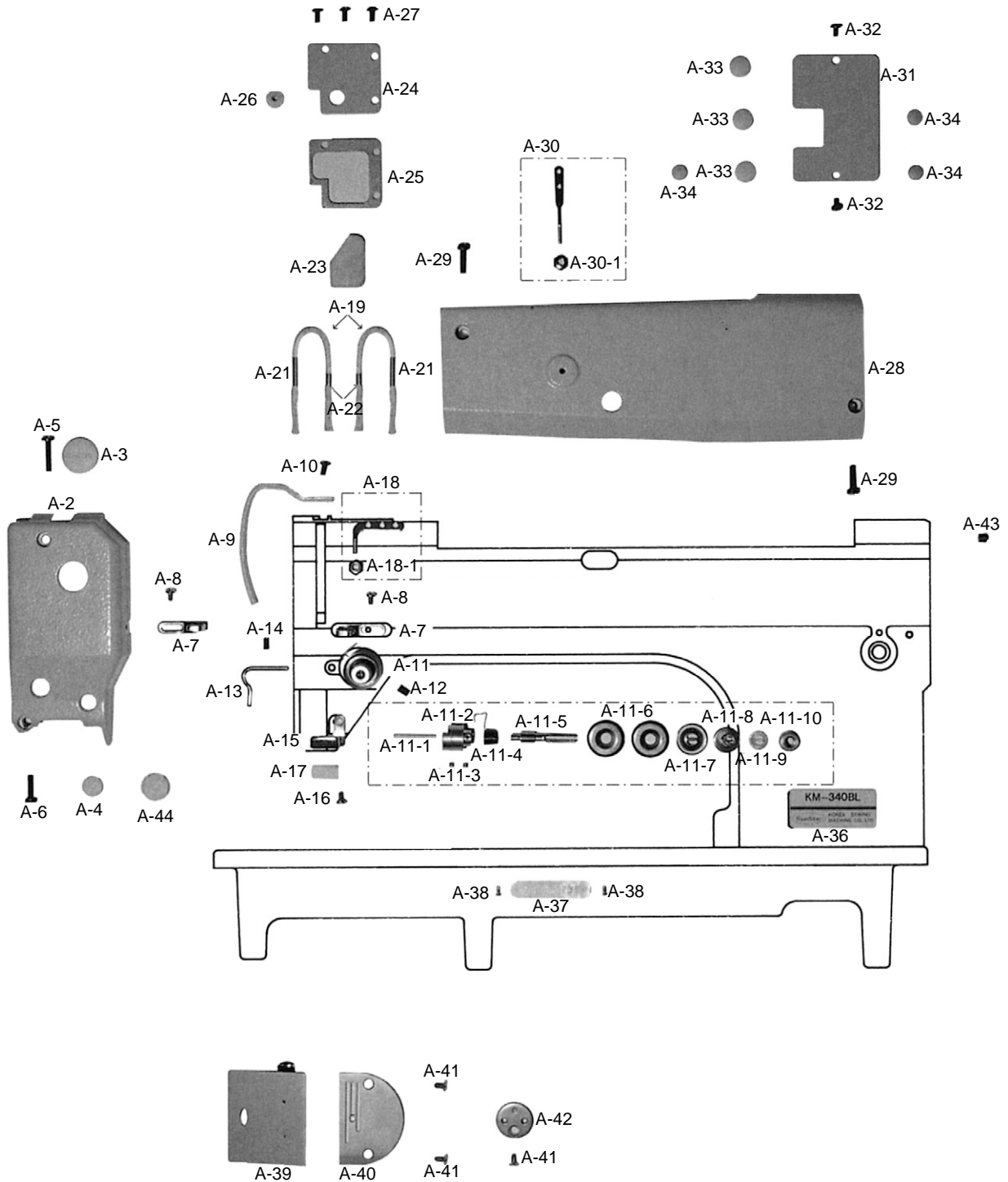
| | | |
|----------|---|----|
| A | <i>Machine Body & Thread Tension Adjusting Mechanism</i> 외장 및 실장력 조절관계..... | 6 |
| B | <i>Upper Shaft & Needle Bar & Upright Shaft & Lower Shaft Mechanism</i> 상축, 바늘대 및 입축, 하축관계..... | 8 |
| C | <i>Presser Foot & Upper Feed Mechanism</i> 노루발 및 상피이드 관계..... | 12 |
| D | <i>Lower Feed Mechanism</i> 하피이드 관계..... | 16 |
| E | <i>Presser Bar & Knee Lifting Mechanism</i> 누름대 및 무릎올림 관계..... | 20 |
| F | <i>Lubrication</i> 급유 관계..... | 22 |
| G | <i>Accessories</i> 액세서리 관계..... | 24 |
| | * INDEX..... | 26 |

NOTE : Parts are Subject to change in Design Without Prior Notice.

- | |
|--|
| <p>1. 조에 속한 파트는 개별 조립 시 제품의 파손 또는 재봉 불량 발생될 수 있어 해당 파트에 대한 주문 시에는 조 품목으로만 구입이 가능합니다.</p> <p>2. 본 책자는 Parts Book으로 제작되었으므로 매뉴얼로 사용 불가합니다.</p> <p>1. The parts classified as ass'y items may cause damage to the machine or bad sewing when they are separately assembled. Hence, when they are ordered, they can be purchased as ass'y items only.</p> <p>2. This is a parts book. It cannot be used as a manual.</p> |
|--|

A

Machine Body & Thread Tension Adjusting Mechanism 외장 및 실장력 조절관계

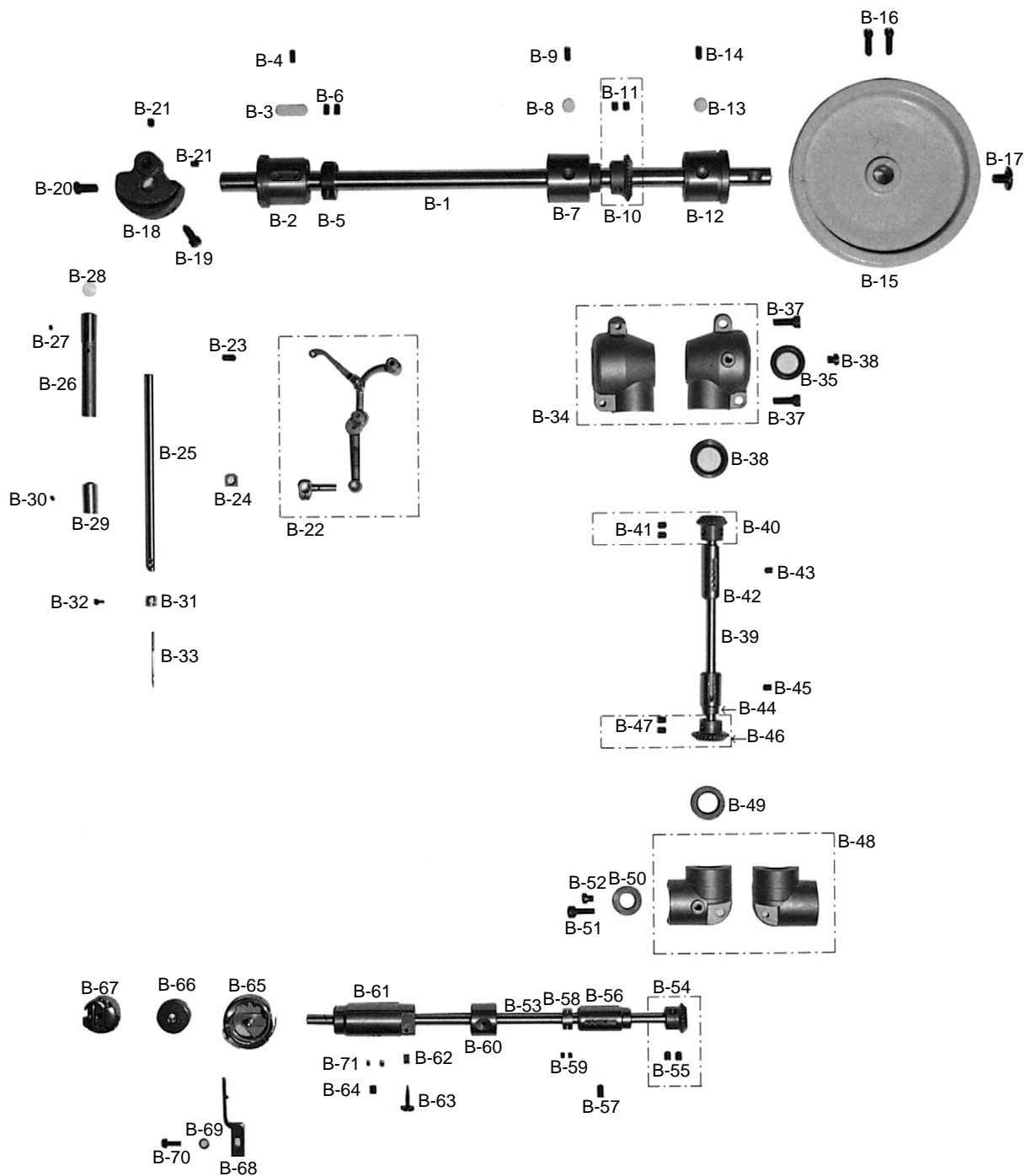


| Ref. No. | Parts No. | Note | Name of Parts | 품 명 | Q' ty | Applied Period |
|----------|--------------|------|---|----------------------------|-------|----------------|
| A-1 | 01-001A-3400 | | Arm Bed Ass'y | 암 베드 (조) | 1 | |
| A-2 | CMB-BJ004900 | | Face Plate | 면판 | 1 | |
| A-3 | DPK-CB001800 | | Rubber Plug For A-2 | 면판 급유마개 | 1 | |
| A-4 | DPK-CB000200 | | Rubber Plug (Needle Bar Adjusting Hole) | 면판 고무마개 (중) 흰색 (3) | 1 | |
| A-5 | DSC-BA003000 | | Screw (11/64" n = 40) | 면판 쥘나사 (하) (11/64" n=40) | 1 | |
| A-6 | DSC-BF001200 | | Screw (11/64" n = 40) | 가마잡이나사 (11/64" n = 40) | 1 | |
| A-7 | CMB-HK005900 | | Thread Guide For A-1 | 암 실안내 | 2 | |
| A-8 | DSC-BA000100 | | Screw (9/64" n = 40) | 오일펌프커버나사 (9/64" n = 40) | 2 | |
| A-9 | CMB-LA013100 | | Cover For Take - Up Lever | 실채기 커버 | 1 | |
| A-10 | DSC-BJ000200 | | Screw (11/64" n = 40) | 흡카바린지 고정나사 (11/64" n=40) | 1 | |
| A-11 | ATA-PS002800 | | Tension Completed Ass'y | 실조절장치 | 1 | |
| A-11-1 | DPN-AA003800 | | Tension Release Pin | 사조자 핀 | 1 | |
| A-11-2 | CTA-BA000200 | | Tension Past Socket | 실조절 장치 붓싱 | 1 | |
| A-11-3 | DSC-CA000200 | | Set Screw For A-11-5 | 실조절 장치 축 고정나사 | 2 | |
| A-11-4 | DSP-BB000200 | | Checking Spring | 뽕뽕 스프링 (D-146) | 1 | |
| A-11-5 | CTA-HM000500 | | Tension Stud | 실조절 장치 축 | 1 | |
| A-11-6 | CTA-HL000100 | | Tension Disk | 실 안내접시 | 2 | |
| A-11-7 | CTA-BJ000200 | | Tension Release Washer | 실조절 스프링 받침 | 1 | |
| A-11-8 | DSP-BA002300 | | Tension Spring | 소라 스프링 (123B) | 1 | |
| A-11-9 | CTA-BJ000100 | | Ratchet For A-11-10 | 실조절 장치 조절와셔 | 1 | |
| A-11-10 | DSN-CD000200 | | Tension Adjusting Knob | 실조절 장치 조절 너트 | 1 | |
| A-12 | DSC-CA000100 | | Screw (15/64" n = 28) | 실채기핀지 핀 나사 (11/64" n=40) | 1 | |
| A-13 | CMB-HK006000 | | Thread Guide Front | 꼭봉 실걸이 | 1 | |
| A-14 | DSC-CA000600 | | Screw (11/64" n = 40) | 꼭봉 실걸이 나사 (11/64" n=40) | 1 | |
| A-15 | CLB-BG004500 | | Upper Thread Oil Felt Case | 윗실 급유 헬트잡이 | 1 | |
| A-16 | DSC-BA000100 | | Screw (9/64" n = 40) | 오일 펌프카바나사 (9/64" n=40) | 1 | |
| A-17 | CLB-JL007300 | | Upper Thread Oil Felt | 윗실 급유 헬트 | 1 | |
| A-18 | AMB-PS000800 | | Thread Guide With Three Holes | 세구멍 실걸이 (조) | 1 | |
| A-18-1 | DSN-AA000100 | | Nut For A-18 | 세구멍 실걸이 너트 | 1 | |
| A-19 | CLB-JD000300 | | Oil Wick | 오일 십지 | 2 | |
| A-21 | CLB-JF001300 | | Oil Pipe (C) | 급유파이프 (중) | 2 | |
| A-22 | CLB-JF001400 | | Oil Pipe (A) | 급유파이프 (소) | 2 | |
| A-23 | CLB-JL008100 | | Oil Felt For Thread Take-Up Lever | 실채기 급유 헬트 | 1 | |
| A-24 | CMB-LB006700 | | Oil Tank Cover For Thread Take-Up Lever | 실채기 급유 탱크 커버 | 1 | |
| A-25 | CMB-FC004700 | | Packing For A-24 | 실채기 급유 탱크 패킹 | 1 | |
| A-26 | DPK-CB001100 | | Oil Cap | 고무마개 (Hole) | 1 | |
| A-27 | DSC-BJ000200 | | Screw (11/64" n = 40) | 흡카바린지고정나사 (11/64" n=40) | 3 | |
| A-28 | CMB-LA013200 | | Top Cover | 윗 뚜껑 | 1 | |
| A-29 | DSC-BF001200 | | Screw (11/64" n = 40) | 가마잡이나사 (11/64" n = 40) | 2 | |
| A-30 | CMB-HK002000 | | Supplementary Tension | 실안내봉 | 1 | |
| A-30-1 | AMB-PS000800 | | Nut For A-30 | 세구멍 실걸이 너트 | 1 | |
| A-31 | CMB-LA013300 | | Side Cover | 윗 뚜껑 | 1 | |
| A-32 | DSC-BA000900 | | Screw (9/64" n = 40) | 면판측면 카바나사 (하) (9/64" n=40) | 2 | |
| A-33 | DPK-CB000200 | | Rubber Plug For A-1 | 면판 고무마개 (중) 흰색 (3) | 3 | |
| A-34 | DPK-CB002800 | | Rubber Plug For A-1 | 면판 고무마개 (소) 흰색 (5) | 3 | |
| A-36 | CMB-LD001900 | | Model Mark | 모델 마크 | 1 | |
| A-37 | 01-035P-1370 | | Machine Number Plate | 번호판 | 1 | |
| A-38 | 01-035P-7400 | | Setting Pin For A-37 | 번호판 핀 | 2 | |
| A-39 | CMB-LB004400 | | Slide Plate Ass'y | 미끄럼판 (조) | 1 | |
| A-40 | CGA-GA001500 | | Needle Plate | 바늘판 | 1 | |
| A-41 | DSC-BC000100 | | Screw (11/64" n = 40) | 흡볼이 접시 작은나사 (11/64" n=40) | 3 | |
| A-42 | CMB-BJ005000 | | Holder For Attachment | 게이지 부착판 | 1 | |
| A-43 | DPK-CA002800 | | Cap For B-12 | 상축 후붓싱 급유 구멍 마개 | 1 | |
| A-44 | DPK-CB000900 | | Rubber Plug (Needle Bar Adjusting Hole) | 면판 고무 | 1 | |

B

Upper Shaft & Needle Bar & Upright Shaft & Lower Shaft Mechanism

상축, 바늘대 및 입축 하축 관계

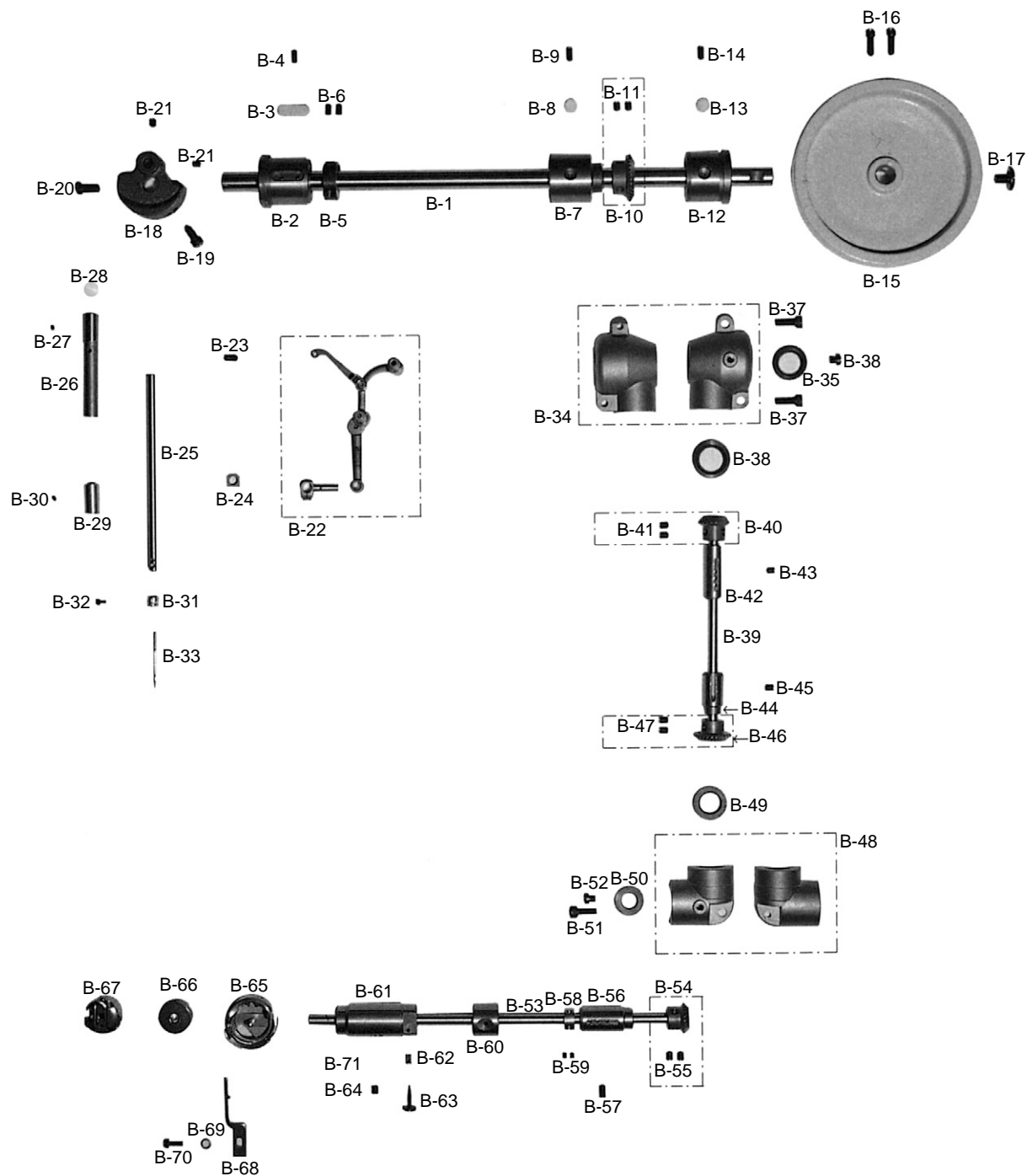


| Ref. No. | Parts No. | Note | Name of Parts | 품 명 | Q' ty | Applied Period |
|----------|--------------|------|--|---------------------------|-------|----------------|
| B-1 | CUS-KC001700 | | Main Shaft | 상축 | 1 | |
| B-2 | DBS-DB005100 | | Main Shaft Bushing (Front) | 상축 앞 붓싱 | 1 | |
| B-3 | CLB-JL007400 | | Oil Felt For B-2 | 상축 앞 붓싱 펠트 | 1 | |
| B-4 | DSC-CA000800 | | Screw (15/64" n=28) | 상축 붓싱 고정나사 (15/64 "n=28) | 1 | |
| B-5 | DCL-AA000102 | | Main Shaft Collar | 메스 작동 캠 카라 | 1 | |
| B-6 | DSC-CA001100 | | Screw (1/4" n=40) | 실채기핀 고정나사 (1/4 "n=40) | 2 | |
| B-7 | DBS-DA016900 | | Main Shaft Bushing (Center) | 상축 중붓싱 | 1 | |
| B-8 | CLB-JL007500 | | Oil Felt For B-7 | 상축 중붓싱 급유 펠트 | 1 | |
| B-9 | DSC-CA000800 | | Screw (15/64" n=28) | 상축 붓싱 고정나사 (15/64 "n=28) | 1 | |
| B-10 | DGR-AD000100 | | Main Shaft Gear | 상축 기어 (국산) | 1 | |
| B-11 | DSC-CA000500 | | Screw (1/4" n=40) | 홈볼이멈춤나사 (1/4 "n=40) | 2 | |
| B-12 | DBS-DB005200 | | Main Shaft Bushing (Rear) | 상축 후붓싱 | 1 | |
| B-13 | CLB-JL007500 | | Oil Felt For B-12 | 상축 중붓싱 급유 펠트 | 1 | |
| B-14 | DSC-CA000800 | | Screw (15/64" n=28) | 상축 붓싱 고정나사 (15/64 "n=28) | 1 | |
| B-15 | DPL-AA000800 | | Pulley | 풀리 | 1 | |
| B-16 | DSC-BF000800 | | Screw (15/64" n=28) | 풀리고정나사 (15/64 "n=28) | 2 | |
| B-17 | DSC-BG000200 | | Screw (5/16" n=24) | 풀리큰나사(5/16 "n=24) | 1 | |
| B-18 | CUS-DA001800 | | Counter Weight | 링크 캠 | 1 | |
| B-19 | DSC-BF003700 | | Screw (9/32" n=28) | 링크 캠 위치 고정나사 (9/32 "n=28) | 1 | |
| B-20 | DSC-BF011500 | | Screw (9/32" n=28) | 홈볼이 납작 작은나사 (9/32 "n=28) | 1 | |
| B-21 | DSC-CA000500 | | Screw (1/4" n=40) | 홈볼이 멈춤나사 (1/4 "n=40) | 2 | |
| B-22 | CTH-HJ001800 | | Thread Take -Up Lever Ass'y | 실채기 | 1 | |
| B-23 | DSC-CA000800 | | Screw (15/64" n=28) | 상축 붓싱 고정나사 (15/64 "n=28) | 1 | |
| B-24 | CNB-BK001000 | | Sliding Block For B-22 | 바늘대 안내 블록 | 1 | |
| B-25 | CNB-CR000200 | | Needle Bar | 바늘대 | 1 | |
| B-26 | DBS-DA003400 | | Needle Bar Bushing (Upper) | 바늘대 상붓싱 | 1 | |
| B-27 | DSC-CA002400 | | Screw (11/64" n=40) | 쥘나사 | 1 | |
| B-28 | DPK-CB002300 | | Rubber Cap For B-6 | 바늘대 상붓싱 마개 | 1 | |
| B-29 | DBS-DA017000 | | Needle Bar Bushing (Lower) | 바늘대 하붓싱 | 1 | |
| B-30 | DSC-CA002400 | | Screw (11/64" n=40) | 바늘대 붓싱나사 (11/64 "n=40) | 1 | |
| B-31 | CNB-HK001400 | | Thread Guide For B-26 | 바늘대 실걸이 | 1 | |
| B-32 | DSC-BF000100 | | Screw (1/8" n=44) | 홈볼이 납작 작은나사 (1/8 "n=44) | 1 | |
| B-33 | | | Needle | 바늘 | 1 | |
| B-34 | AUR-PS000100 | | Gear Case Ass'y (Upper) | 상기어 케이스 (조) | 1 | |
| B-35 | DPK-AZ000600 | | Gear Case Retainer (Main Shaft) | 오일 썰 (B) | 1 | |
| B-36 | DPK-AZ000700 | | Gear Case Retainer (Upright Shaft Upper) | 오일 썰 (C) | 1 | |

B

Upper Shaft & Needle Bar & Upright Shaft & Lower Shaft Mechanism

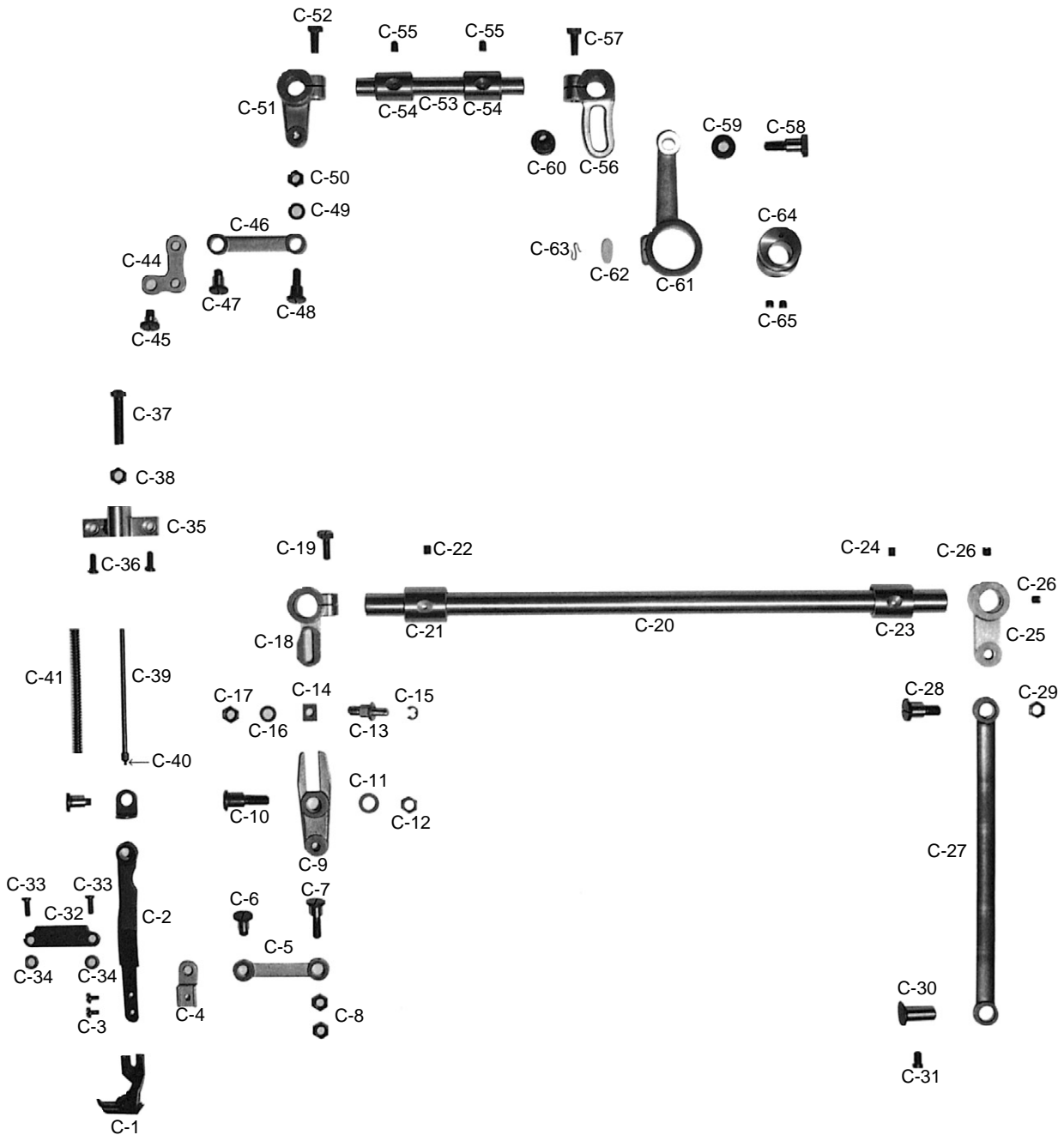
상축, 바늘대 및 입축 하축 관계



| Ref. No. | Parts No. | Note | Name of Parts | 품 명 | Q' ty | Assembly No. |
|----------|--------------|------|---------------------------------------|-------------------------------|-------|--------------|
| B-37 | PSC-AC001200 | | Screw (M6×1.0) | 역진 슬레노이드 브라켓 잠나사 (M6×1.0) | 2 | |
| B-38 | DSC-BF013600 | | Screw (1/4" n = 24) | 주입구나사 (1/4" n = 24) | 1 | |
| B-39 | CUR-KC000300 | | Upright Shaft | 세운축 | 1 | |
| B-40 | DGR-AD000200 | | Upright Shaft Gear (Upper) | 입축 상기어 (국산) | 1 | |
| B-41 | DSC-CA000500 | | Screw (1/4" n = 40) | 홈볼이 멈춤나사 (1/4" n = 40) | 2 | |
| B-42 | DBS-DA017100 | | Upright Shaft Bushing (Upper) | 세운축 상 붓싱 | 1 | |
| B-43 | DSC-CA000100 | | Screw (15/64" n = 28) | 실체기 힌지 핀 나사 (15/64" n = 28) | 1 | |
| B-44 | DBS-DA017200 | | Upright Shaft Bushing (Lower) | 세운축 하 붓싱 | 1 | |
| B-45 | DSC-CA000100 | | Screw (15/64" n = 28) | 실체기 힌지 핀 나사 (15/64" n = 28) | 1 | |
| B-46 | DGR-AD000300 | | Upright Shaft Gear (Lower) | 입축 하 기어 (국산) | 1 | |
| B-47 | DSC-CA000500 | | Screw (1/4" n = 40) | 홈볼이 멈춤나사 (1/4" n = 40) | 2 | |
| B-48 | AUR-PS000200 | | Gear Case Ass'y (Lower) | 하기어 케이스(조) | 1 | |
| B-49 | DPK-AZ000900 | | Gear Case Retainer (Uper Shaft Lower) | 오일 셸 (D) | 1 | |
| B-50 | DPK-AZ001000 | | Gear Case Retainer (Lower Shaft) | 오일 셸 (E) | 1 | |
| B-51 | PSC-AC001200 | | Screw (M6×1.0) | 역진 슬레노이드 브라켓 잠나사 (M6×1.0) | 1 | |
| B-52 | DSC-BF013600 | | Screw (1/4" n = 24) | 주입구 나사 (1/4" n = 24) | 1 | |
| B-53 | CLS-KC002100 | | Lower Shaft | 하축 | 1 | |
| B-54 | DGR-AD000400 | | Lower Shaft Gear (Rear) | 하축 뒷기어 | 1 | |
| B-55 | DSC-CA000500 | | Screw (1/4" n = 40) | 홈볼이 멈춤나사 (1/4" n = 40) | 2 | |
| B-56 | DBS-DA017300 | | Lower Shaft Bushing (Rear) | 하축후 붓싱 | 1 | |
| B-57 | DSC-CA000100 | | Screw (15/64" n = 28) | 실체기 힌지 핀 나사 (15/64" n = 28) | 1 | |
| B-58 | DCL-AA003700 | | Lower Shaft Collar | 오일 펌프 카라 (B) | 1 | |
| B-59 | DSC-CB000300 | | Screw (11/64" n = 40) | 하축중액어링붓싱고정나사A (11/64" n = 40) | 2 | |
| B-60 | DBS-DA017400 | | Lower Shaft Bushing (Center) | 하축 중 붓싱 | 1 | |
| B-61 | DBS-DA017500 | | Lower Shaft Bushing (Front) | 하축 앞 붓싱 | 1 | |
| B-62 | DSP-AA008000 | | Spring For B-63 | 하축 유량 조절 스프링 | 1 | |
| B-63 | DSC-BF013700 | | Oil Adjusting Screw For B-61 | 하축 기름조절나사 | 1 | |
| B-64 | DSC-CA000100 | | Screw (15/64" n = 28) | 실체기 핀 고정나사 (15/64" n = 28) | 1 | |
| B-65 | CHK-HA001200 | | Rotary Hook | 가마 | 1 | |
| B-66 | CHK-HB000700 | | Bobbin | 보빈 | 1 | |
| B-67 | CHK-HC000500 | | Bobbin Case Ass'y | 보빈 케이스 | 1 | |
| B-68 | CHK-HH000400 | | Hook Retainer | 가마잡이 | 1 | |
| B-69 | DWS-CA000100 | | Spring Washer For B-70 | 가마잡이 와셔 | 1 | |
| B-70 | DSC-BF003100 | | Screw (11/64" n = 40) | 가마잡이 나사 (11/64" n = 40) | 1 | |
| B-71 | DPK-CY001200 | | Oil cap (small) | 하축 앞붓싱 기름 구멍마개(S) | 2 | |



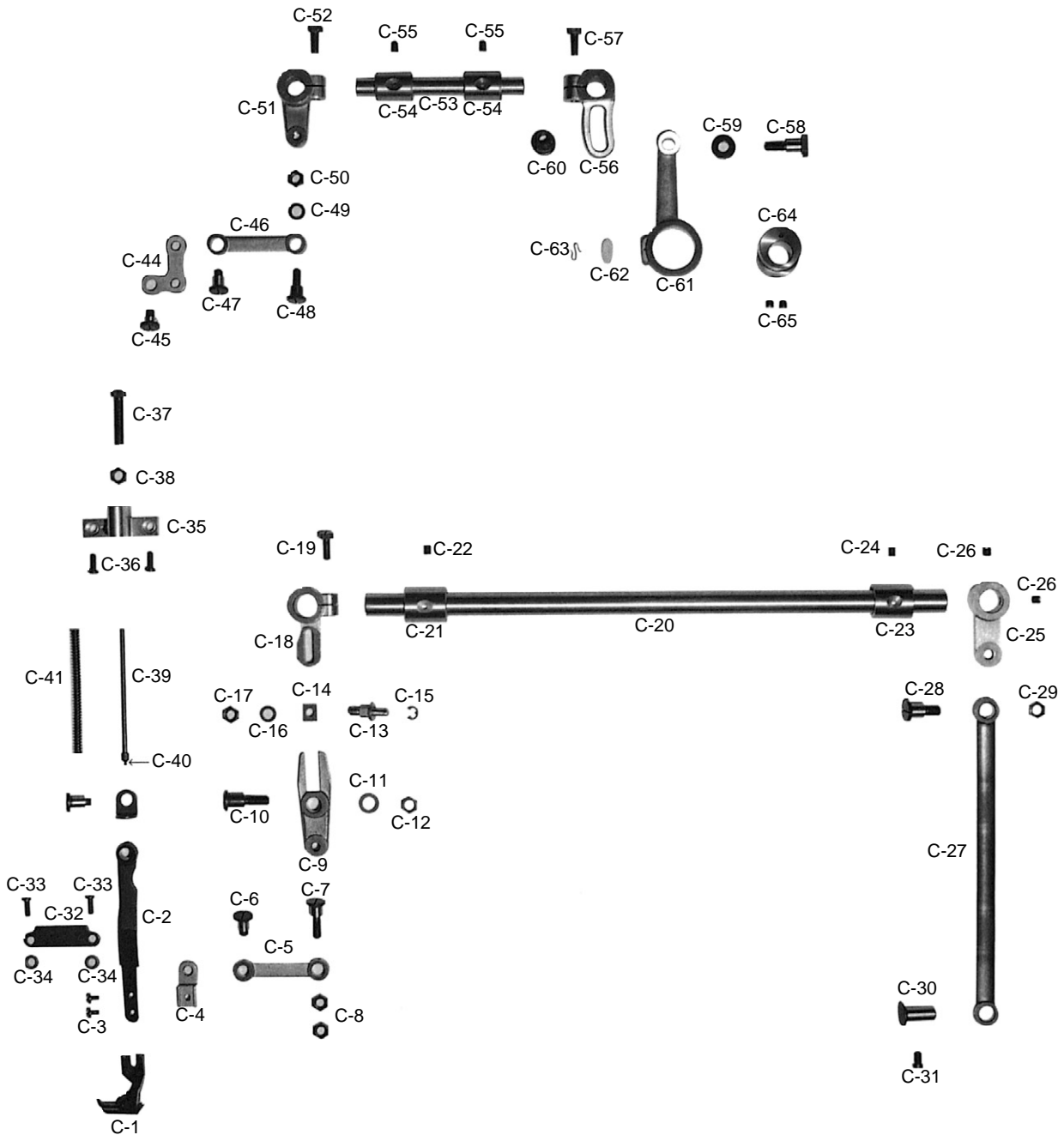
Presser Foot & Upper Feed Mechanism 노루발 및 상피이드 관계



| Ref. No. | Parts No. | Note | Name of Parts | 품 명 | Q' ty | Applied Period |
|----------|--------------|------|----------------------------------|-------------------------------|-------|----------------|
| C-1 | CGA-GC002300 | | Main Presser Foot Assembly | 주 노루발 | 1 | |
| C-2 | CUF-CM000100 | | Upper Feed Lever | 노루발 운동레버 | 1 | |
| C-3 | DSC-BA000900 | | Screw (9/64" n = 40) | 면판측면 카바나사 (하) (9/64" n=40) | 2 | |
| C-4 | CUF-BF000100 | | Holder For C-2 | 노루발 운동 레버잡이 | 1 | |
| C-5 | CUF-CC000600 | | Upper Feed Driving Rod (Small) | 수평 운동 롯드 (49mm) | 1 | |
| C-6 | DSC-FA015400 | | Hinge Screw For C-5 | 노루발 운동 레버 링크 단나사 | 1 | |
| C-7 | DSC-FA015800 | | Hinge Screw For C-5 | 수평 운동 롯드 단나사 | 1 | |
| C-8 | DSN-AA000400 | | Nut (15/64" n = 28) | 수평 운동 롯드 단나사 너트 (15/64" n=28) | 2 | |
| C-9 | CUF-CA000400 | | Upper Feed Adjusting Link | 노루발 수평운동링크 | 1 | |
| C-10 | DSC-FA015700 | | Hinge Screw For C-9 | 수평운동링크 단나사 | 1 | |
| C-11 | DWS-AA011800 | | Washer For C-10 | 역진 레버 와셔 | 1 | |
| C-12 | DSN-AA002200 | | Nut (9/32" n = 28) | 피드조절기연결 단나사 너트 (9/32" n=28) | 1 | |
| C-13 | CUF-KZ000100 | | Upper Feed Adjusting Shaft | 수평운동 조절축 | 1 | |
| C-14 | CUF-CD000100 | | Block For C-13 | 노루발 수평운동 축 블럭 | 1 | |
| C-15 | PSR-AC000300 | | Stop Ring For C-13 | 인상판 E링 (φ4) | 1 | |
| C-16 | DWS-AA014400 | | Washer For C-13 | 포크 줍나사 와셔 | 1 | |
| C-17 | DSN-AA000500 | | Nut (1/4" n = 40) | 수평운동 조절축 너트 (1/4" n=40) | 1 | |
| C-18 | CUF-CB000600 | | Upper Feed Adjusting Crank | 수평운동 조절 크랭크 | 1 | |
| C-19 | DSC-AA002900 | | Screw (15/64" n = 28) | 수평운동 조절 크랭크 줍나사 | 1 | |
| C-20 | CUF-KC000200 | | Upper Feed Driving Shaft (Large) | 노루발 수평운동축 | 1 | |
| C-21 | DBS-DA018400 | | Bushing For C-20 (Front) | 수평운동축 앞 붓싱 | 1 | |
| C-22 | DSC-CA000100 | | Screw (15/64" n = 28) | 실체기힌지 핀나사 (15/64" n=28) | 1 | |
| C-23 | DBS-DA018500 | | Bushing For C-20 (Rear) | 수평운동축 후 붓싱 | 1 | |
| C-24 | DSC-CA000100 | | Screw (15/64" n = 28) | 실체기힌지 핀나사 (15/64" n=28) | 1 | |
| C-25 | CUF-CB000700 | | Crank For C-20 | 수평운동축 크랭크 (후) | 1 | |
| C-26 | DSC-CA000500 | | Screw (1/4" n = 40) | 홈볼이 멈춤나사 (1/4" n=40) | 2 | |
| C-27 | CUF-CC000500 | | Upper Feed Driving Shaft Rod | 수평운동축 롯드 | 1 | |
| C-28 | DSC-FA015300 | | Hinge Screw For C-27 | 노루발 수평운동축 롯드 단나사 | 1 | |
| C-29 | DSN-AA002200 | | Nut (9/32" n = 28) | 피드 조절기 연결 단나사너트 (9/32" n=28) | 1 | |
| C-30 | DPN-AD008000 | | Connection Pin for C-27 | 와이롯드 연결핀 | 1 | |
| C-31 | DSC-BF000400 | | Screw (15/64" n = 28) | 톱니받침축 고정나사 (15/64" n=28) | 1 | |
| C-32 | CUF-BJ000100 | | Upper Feed Lever Support Plate | 노루발 운동 레버 지지판 | 1 | |
| C-33 | DSC-BJ000400 | | Screw (11/64" n = 40) | 윗뚜껑줍나사 (11/64" n=40) | 2 | |



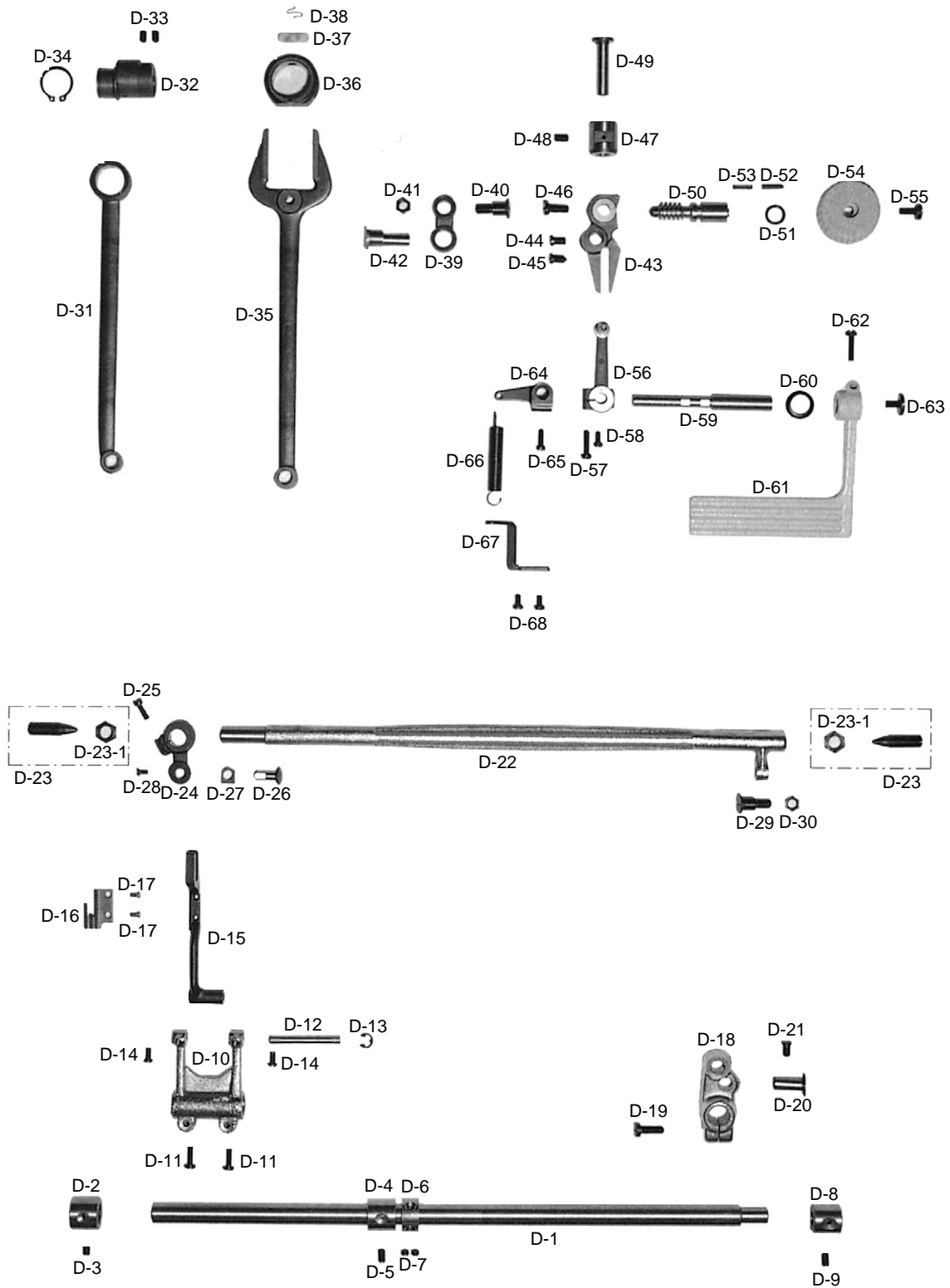
Presser Foot & Upper Feed Mechanism 노루발 및 상피이드 관계



| Ref. No. | Parts No. | Note | Name of Parts | 품 명 | Q' ty | Assembly No. |
|----------|--------------|------|----------------------------------|--------------------------------|-------|--------------|
| C-34 | CUF-BN000100 | | Support Ring For C-32 | 노루발 운동 레버 지지판 링 | 2 | |
| C-35 | CUF-BA000200 | | Frame For C-40 | 노루발 압력 조절나사 후레임 | 1 | |
| C-36 | DSC-BJ000400 | | Screw (11/64" n = 40) | 윗뚜껑쥼나사 (11/64" n = 40) | 2 | |
| C-37 | DSC-BF013800 | | Screw (9/32" n = 28) | 홈볼이 납작 작은나사 (9/32" n = 28) | 1 | |
| C-38 | DSN-AA002200 | | Nut (9/32" n = 28) | 피드 조절기 연결 단나사너트 (9/32" n = 28) | 1 | |
| C-39 | CUF-KC000300 | | Sub-Pressure Adjusting Pole | 보조 노루발 압력 조절봉 | 1 | |
| C-40 | CUF-BA000300 | | Support Plate For C-35 | 보조 노루발 압력 스프링 받침 | 1 | |
| C-41 | DSP-AA007800 | | Spring For C-35 | 보조압력 조절스프링 | 1 | |
| C-42 | CUF-BB000100 | | Support Plate For C-35 | 보조 노루발 압력봉 받침 | 1 | |
| C-43 | DSC-FA016000 | | Hinge Screw For C-2 | 노루발 운동 레버 단나사 | 1 | |
| C-44 | CUF-CA000300 | | L-Shaped Link | 노루발 운동 레버 링크 | 1 | |
| C-45 | DSC-FA015500 | | Hinge Screw For C-8 | 누름대 올리기 브라켓 연결 단나사 | 1 | |
| C-46 | CUF-CC000400 | | Upper Feed Driving Rod (Large) | 상하 운동 로드(51mm) | 1 | |
| C-47 | DSC-FA015400 | | Hinge Screw For C-46 | 노루발 운동 레버 링크 단나사 | 1 | |
| C-48 | DSC-FA015600 | | Hinge Screw For C-51 | 노루발 상하 운동축 크랭크 단나사 | 1 | |
| C-49 | DWS-AA014400 | | Washer For C-48 | 포크 쥼 나사 와셔 | 1 | |
| C-50 | DSN-AA000400 | | Nut (15/64" n = 28) | 수평운동 로드 단나사 너트(15/64" n = 28) | 1 | |
| C-51 | CUF-CB000400 | | Crank For C-53 | 상하 운동축 크랭크 (전) | 1 | |
| C-52 | DSC-AA002900 | | Screw (15/64" n = 28) | 수평운동 조절 크랭크 쥼나사 | 1 | |
| C-53 | CUF-KC000100 | | Upper Feed Driving Shaft (Small) | 노루발 상하 운동축 | 1 | |
| C-54 | DBS-DA018300 | | Bushing For C-53 | 노루발 상하 운동축 붓싱 | 2 | |
| C-55 | DSC-CA000100 | | Screw (15/64" n = 28) | 실체기힌지 핀나사 (15/64" n = 28) | 2 | |
| C-56 | CUF-CB000500 | | Upper Feed Adjusting Crank | 상하 운동조절 크랭크 | 1 | |
| C-57 | DSC-AA002900 | | Screw (15/64" n = 28) | 수평운동 조절 크랭크 쥼나사 | 1 | |
| C-58 | 15-129A-3400 | | Upper Feed Adjusting Shaft | 노루발 상하 운동조절축 | 1 | |
| C-59 | DWS-AA005400 | | Washer For C-58 | 노루발 상하 운동조절축 와셔 | 1 | |
| C-60 | DSN-CZ000800 | | Nut For C-58 | 노루발 상하 운동조절 너트 | 1 | |
| C-61 | CUF-CC000700 | | Connecting Rod For C-64 | 상하운동 캠 로드 | 1 | |
| C-62 | CLB-JL007700 | | Oil Felt For C-61 | 노루발 상하 운동 캠 로드 굽유헨트 | 1 | |
| C-63 | CLB-BH001800 | | Oil Felt Holder For C-61 | 상하운동 캠 로드 유십잡이 | 1 | |
| C-64 | CUF-DC000100 | | Feed Driving Eccentric Cam | 노루발 상하 운동 캠 | 1 | |
| C-65 | DSC-CA000500 | | Screw (1/4" n = 40) | 홈볼이 멈춤나사 (1/4" n = 40) | 2 | |

D

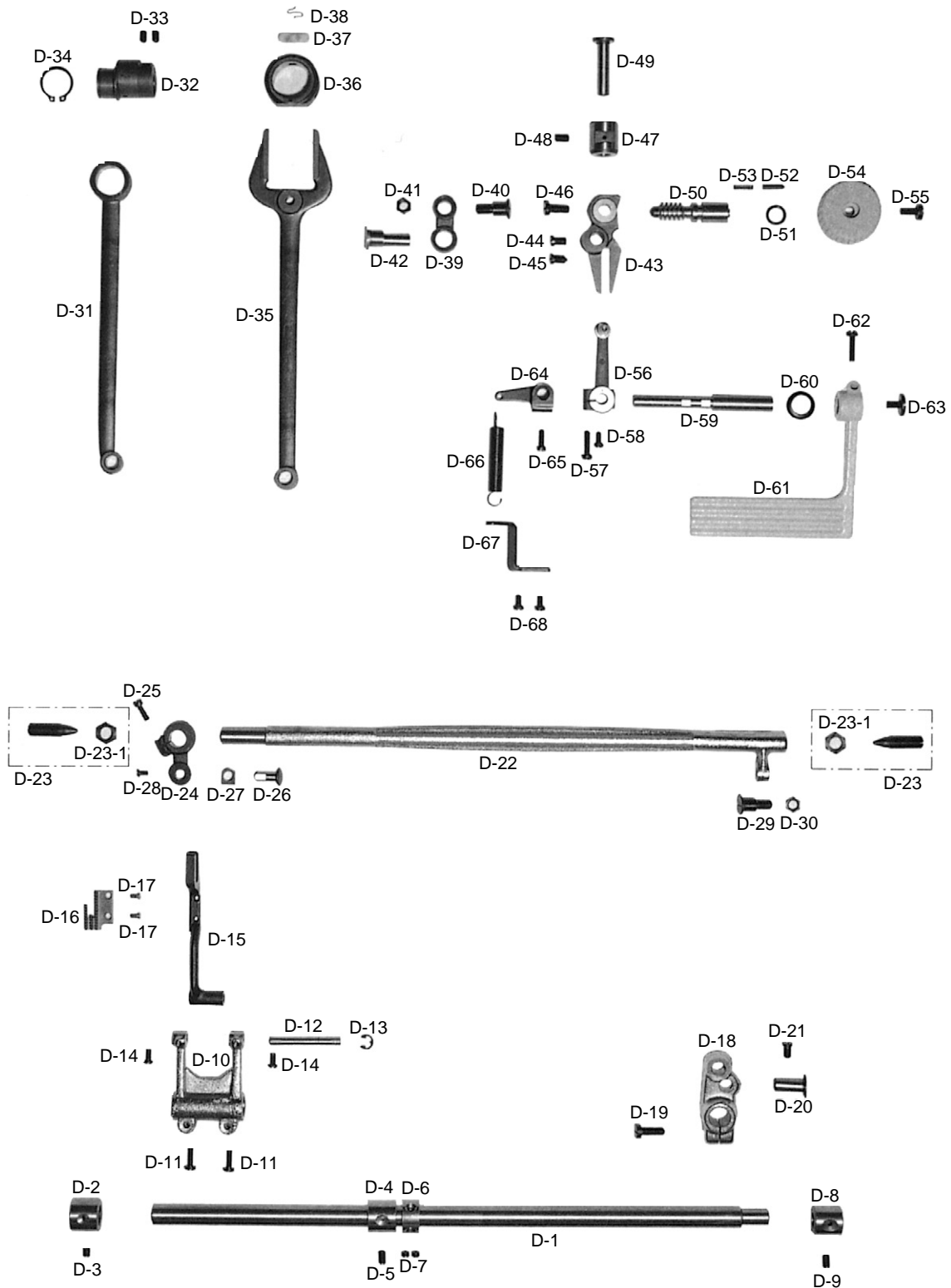
Lower Feed Mechanism 하피이드 관계



| Ref. No. | Parts No. | Note | Name of Parts | 품 명 | Q' ty | Applied Period |
|----------|--------------|------|----------------------------------|----------------------------------|-------|----------------|
| D-1 | CLF-KF000600 | | Feed Rocker Shaft | 수평 밀대 | 1 | |
| D-2 | DBS-DA017900 | | Bushing For D-1 (Front) | 수평 밀대 앞 붓싱 | 1 | |
| D-3 | DSC-CA000100 | | Screw (15/64" n = 28) | 실체기힌지 핀 나사 (15/64" n = 28) | 1 | |
| D-4 | DBS-DA018000 | | Bushing For D-1 (Center) | 수평 밀대 중붓싱 | 1 | |
| D-5 | DSC-CA000800 | | Screw (15/64" n = 28) | 상축 붓싱 고정나사 (15/64" n = 28) | 1 | |
| D-6 | DCL-AA006400 | | Thrust Collar Ass'y | 상축카라 | 1 | |
| D-7 | DSC-CA000500 | | Screw (1/4" n = 40) | 홈볼이멈춤나사(1/4" n = 40) | 2 | |
| D-8 | DBS-DA018100 | | Bushing For D-1 (Rear) | 수평 밀대 후 붓싱 | 1 | |
| D-9 | DSC-CA000800 | | Screw (15/64" n = 28) | 상축 붓싱 고정나사 (15/64" n = 28) | 1 | |
| D-10 | CLF-CB002300 | | Feed Rocker Ass'y | 톱니받침 크랭크 | 1 | |
| D-11 | DSC-BJ005100 | | Screw (3/16" n = 28) | 톱니받침 크랭크 쥘나사 | 2 | |
| D-12 | CLF-KC000900 | | Feed Bar Shaft | 톱니받침 축 | 1 | |
| D-13 | PSR-AC000200 | | E-Ring (φ 5) | E 링 (φ 5) | 1 | |
| D-14 | DSC-BF003600 | | Screw (11/64" n = 40) | 실체기카바나사 (11/64" n = 40) | 2 | |
| D-15 | CLF-BA000400 | | Feed Bar | 톱니받침 | 1 | |
| D-16 | CGA-GB001500 | | Feed Dog | 톱니 | 1 | |
| D-17 | DSC-BF001800 | | Screw (1/8" n = 44) | 톱니 쥘 나사 (1/8" n = 44) | 2 | |
| D-18 | CLF-CB002500 | | Feed Rocker Shaft Crank | 수평 밀대 크랭크 | 1 | |
| D-19 | DSC-BA001300 | | Screw (1/4" n = 28) | 요동크랭크 쥘나사 (1/4" n = 28) | 1 | |
| D-20 | DPN-AD008000 | | Connecting Pin For D-35 | 와이롯드연결핀 | 1 | |
| D-21 | DSC-BF000400 | | Screw (15/64" n = 28) | 톱니받침 축 고정나사 (15/64" n = 28) | 1 | |
| D-22 | CLF-KG000300 | | Feed Lifting Shaft | 들대 | 1 | |
| D-23 | DSC-CA003600 | | Screw (3/8" n = 28) | 들대 지지나사 (조) (3/8" n = 28) | 2Set | |
| D-23-1 | DSN-AA003600 | | Nut For D-23 | 들대 지지나사 너트 | 2 | |
| D-24 | CLF-CB002400 | | Feed Lifting shaft Crank (Front) | 들대 크랭크 (전) | 1 | |
| D-25 | DSC-BF001100 | | Screw (3/16" n = 28) | 들대 크랭크 (전) 고정나사 (3/16" n = 28) | 1 | |
| D-26 | CLF-KC001000 | | Slide Block For D-15 | 톱니 받침 블럭 축 | 1 | |
| D-27 | CLF-CD001000 | | Sliding Block | 톱니 받침 블럭 | 1 | |
| D-28 | DSC-BA001000 | | Screw (11/64" n = 40) | 인봉카라쥘나사 (11/64" n = 40) | 1 | |
| D-29 | DSC-FA015200 | | Connection Screw For D-31 | 피이드 조절기 연결 단나사 | 1 | |
| D-30 | DSN-AA002200 | | Nut (9/32" n = 28) | 피이드 조절기 연결 단나사 너트 (9/32" n = 28) | 1 | |
| D-31 | CLF-CC000200 | | Crank Rod | 크랭크 롯드 | 1 | |
| D-32 | CLF-DC001200 | | Feed Cam | 피이드 캠 | 1 | |
| D-33 | DSC-CA003500 | | Screw (15/64" n = 28) | 피이드 캠 고정나사(15/64" n = 28) | 2 | |
| D-34 | DSR-AA000100 | | Stopper C-Ring | 크랭크 롯드 스토퍼링 (φ 20) | 1 | |

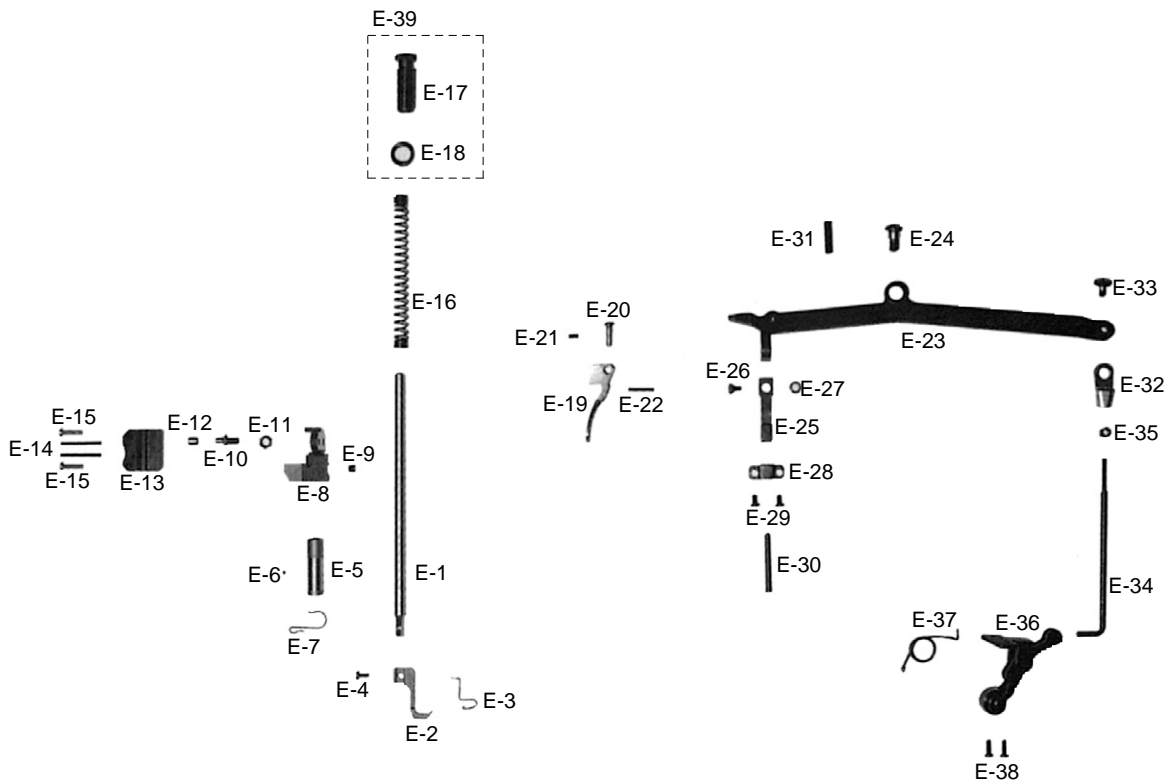
D

Lower Feed Mechanism 하피이드 관계

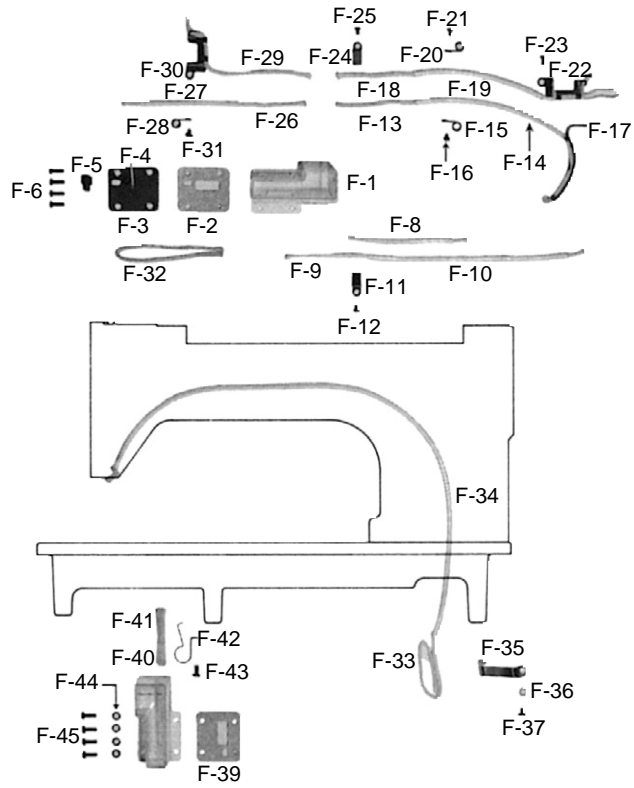


| Ref. No. | Parts No. | Note | Name of Parts | 품 명 | Q' ty | Assembly No. |
|----------|--------------|------|---------------------------------|-------------------------------|-------|--------------|
| D-35 | CLF-CC000900 | | Y-Rod | 와이롯드 | 1 | |
| D-36 | CLF-BN000100 | | Connection Screw For Y-Rod | 와이롯드 연결링 | 1 | |
| D-37 | CLB-JL007600 | | Oil Felt For D-36 | 와이롯드 연결링 급유felt | 1 | |
| D-38 | CLB-BH001800 | | Oil Felt Holder For D-36 | 상하운동 캠 로트 유심잡이 | 1 | |
| D-39 | CFA-CA001100 | | Feed Link | 피이드링크 | 1 | |
| D-40 | DSC-FA015200 | | Connection Screw For D-43 | 피이드 조절기 연결 단나사 | 1 | |
| D-41 | DSN-AA002200 | | Nut (9/32" n = 28) | 피이드 조절기 연결 단나사 너트(9/32" n=28) | 1 | |
| D-42 | CFA-KH000100 | | Connection Shaft For D-43 | 피이드 링크 연결축 | 1 | |
| D-43 | CFA-DF000600 | | Feed Regulator | 피이드 조절기 | 1 | |
| D-44 | DSC-BF000400 | | Screw (15/64" n = 28) | 톱니 받침 축 고정나사 (15/64" n=28) | 1 | |
| D-45 | DSC-BJ003800 | | Screw (15/64" n = 28) | 역진레버크랭크 쥘나사 (15/64" n=28) | 1 | |
| D-46 | DSC-BF000700 | | Screw (15/64" n = 28) | 베이스고정나사 (B) (15/64" n=28) | 1 | |
| D-47 | DBS-DA017800 | | Bushing For D-49 | 피이드 조절축 붓싱 | 1 | |
| D-48 | DSC-CA000800 | | Screw (15/64" n = 28) | 상축붓싱고정나사(15/64" n=28) | 1 | |
| D-49 | CFA-KC001000 | | Feed Regulator Shaft | 피이드 조절축 | 1 | |
| D-50 | CFA-KJ000800 | | Stitch Length Adjusting Screw | 다이얼 축 | 1 | |
| D-51 | PPK-BA001600 | | O-Ring For D-50 | 다이얼 축 오링 | 1 | |
| D-52 | DPN-AA008600 | | Feed Regulator Dial Pin | 다이얼 핀 | 1 | |
| D-53 | DSP-AA002800 | | Feed Regulator Dial Spring | 다이얼 스프링 | 1 | |
| D-54 | CFA-CQ000900 | | Stitch Length Adjusting Dial | 다이얼 문자지시판 | 1 | |
| D-55 | DSC-BF001900 | | Screw (3/16" n = 28) | 다이얼 판 고정나사 (3/16" n=28) | 1 | |
| D-56 | AFA-PS000300 | | Feed Regulator Arm | 역진레버크랭크 (조) | 1 | |
| D-57 | DSC-BA000400 | | Screw (3/16" n = 28) | 수평밀레 크랭크 쥘나사(3/16" n=28) | 1 | |
| D-58 | DSC-BF003100 | | Screw (11/64" n = 40) | 가마잡이나사 (11/64" n=40) | 1 | |
| D-59 | CFA-KF000400 | | Feed Lever Shaft | 역진레버 축 | 1 | |
| D-60 | DWS-CB000200 | | Lever Washer For D-59 | 레버와셔 | 1 | |
| D-61 | CFA-CM001200 | | Reverse Feed Control Lever | 역진레버 | 1 | |
| D-62 | DSC-BA001400 | | Screw (3/16" n = 32) | 역진레버 고정나사 (3/16" n=32) | 1 | |
| D-63 | DSC-BJ002400 | | Screw (3/16" n = 32) | 레버덜개나사 (3/16" n=32) | 1 | |
| D-64 | CFA-BB001100 | | Tension Spring Suspension Plate | 역진레버축 스프링걸이 | 1 | |
| D-65 | DSC-BF001100 | | Screw (3/16" n = 28) | 들레크랭크 (전) 고정나사 (3/16" n=28) | 1 | |
| D-66 | DSP-AB003500 | | Spring For D-61 | 레버스프링 | 1 | |
| D-67 | CFA-BB001000 | | Suspension Bracket | 역진레버스프링걸이 | 1 | |
| D-68 | DSC-BA000700 | | Screw (3/16" n = 32) | 톱니 받침 볼록고정나사(15/64" n=32) | 1 | |

Presser Bar & Knee Lifting Mechanism 누름대 및 무릎올림관계



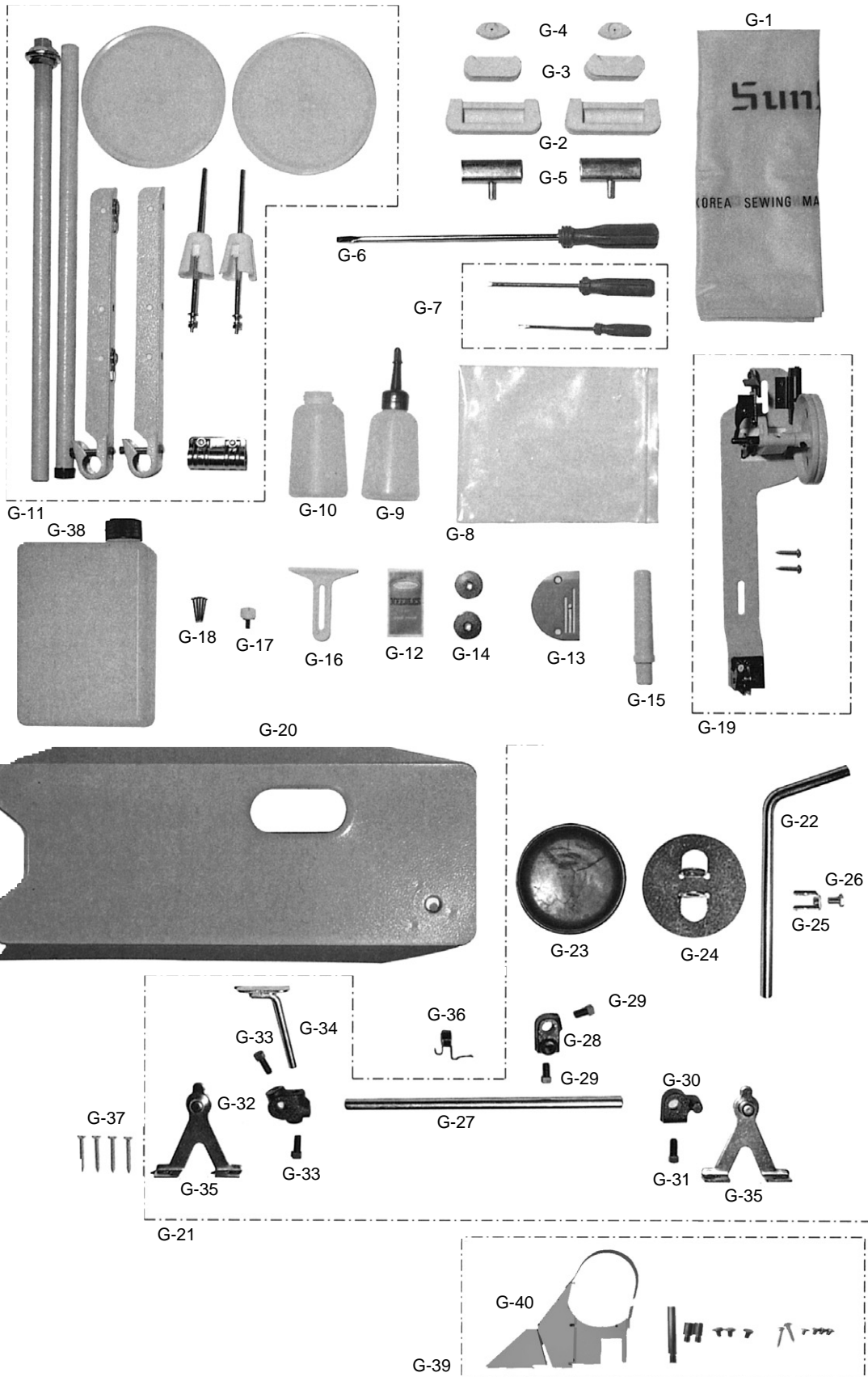
| Ref. No. | Parts No. | Note | Name of Parts | 품 명 | Q' ty | Applied Period |
|----------|--------------|------|--------------------------------|---------------------------|-------|----------------|
| E-1 | CPB-CR000200 | | Presser Bar | 누름대 | 1 | |
| E-2 | CGA-GC002200 | | Sub-Presser Foot | 보조 노루발 | 1 | |
| E-3 | CPB-BH000800 | | Needle Safety Wire | 바늘 보호 와이어 | 1 | |
| E-4 | DSC-BA001700 | | Screw(9/64" n = 40) | 홈볼이 냄비 작은나사 (9/64" n=40) | 1 | |
| E-5 | DBS-DA018200 | | Bushing for E-1 | 누름대 붓싱 | 1 | |
| E-6 | DSC-CA002400 | | Screw(11/64" n = 40) | 바늘대 붓싱나사 (11/64" n=40) | 1 | |
| E-7 | CLB-BH000300 | | Retainer For Oil Tube | 환류파이프잡이 | 1 | |
| E-8 | CPB-BF000900 | | Bracket For Presser Bar Lifter | 누름대 올리기 브라켓 (K3463) | 1 | |
| E-9 | DSC-CA000500 | | Screw (1/4" n = 40) | 홈볼이 멈춤나사 (1/4" n=40) | 1 | |
| E-10 | DSC-FG001200 | | Guide Shaft For E-8 | 누름대 올리기 브라켓 안내축 | 1 | |
| E-11 | DSN-AA001300 | | Nut (1/4" n = 40) | 슬라이드 블록 나사너트 (1/4" n=40) | 1 | |
| E-12 | CPB-CL000400 | | Roller For E-8 | 누름대 올리기 브라켓 로올러 | 1 | |
| E-13 | CPB-BK000300 | | Guide Frame For E-8 | 누름대 올리기 브라켓 안내 | 1 | |
| E-14 | PPN-AF002200 | | Lock Pin For E-13 | 브라켓 안내 로크핀 (3×32) | 2 | |
| E-15 | CTT-CA000400 | | Screw(11/64" n = 40) | 위뚜껑 꺾나사 (좌) (11/64" n=40) | 2 | |
| E-16 | DSP-AA007800 | | Presser Spring | 압력조절스프링 | 1 | |
| E-17 | DSC-HA000500 | | Screw (9/16" n = 20) | 압력조절 나사 (9/16" n=20) | 1 | |
| E-18 | DSN-CC000600 | | Nut (9/16" n = 20) | 압력조절나사 너트 (9/16" n=20) | 1 | |
| E-19 | CPB-CM000600 | | Presser Bar Lifter | 누름대 올리기 | 1 | |
| E-20 | DPN-AD007900 | | Hinge Pin For E-19 | 누름대 올리기 핀 | 1 | |
| E-21 | DSC-CA000600 | | Screw(11/64" n = 40) | 곡봉실결이 나사 (11/64" n=40) | 1 | |
| E-22 | PPN-AF002300 | | Stopper For E-19 | 누름대 올리기 스톱퍼 (3×20) | 1 | |
| E-23 | CPM-CM001600 | | Knee Lifting Lever | 무릎 올림 레버 | 1 | |
| E-24 | DSC-FD001400 | | Hinge Screw For E-23 | 무릎 올림 레버 단나사 | 1 | |
| E-25 | CTR-BJ001500 | | Tension Release Plate | 실늑추기 판 | 1 | |
| E-26 | DSC-FA007300 | | Hinge Screw For E-25 | 연결링크단나사 | 1 | |
| E-27 | CUF-BN000100 | | Support Ring For E-25 | 노루발 운동레버 지지판링 | 1 | |
| E-28 | CTR-LB000100 | | Tension Release Plate Cover | 실늑추기 판 커버 | 1 | |
| E-29 | DSC-BJ000200 | | Screw(11/64" n = 40) | 톱카바힌지 고정나사(11/64" n=40) | 2 | |
| E-30 | DPN-AA011100 | | Tension Release Pin | 실늑추기 핀 | 1 | |
| E-31 | PPN-AF002400 | | Stopper Pin For E-23 | 무릎 올림 레버 스톱퍼 (6×25) | 1 | |
| E-32 | CPM-BF000100 | | Connection Holder | 무릎 올림 봉 잡이 | 1 | |
| E-33 | DSC-FD000300 | | Hinge Screw For E-32 | 무릎 올림 봉 단나사 | 1 | |
| E-34 | CPM-CR000600 | | Knee Lifter Pull Rod | 무릎 올림 봉 | 1 | |
| E-35 | DSN-AA000800 | | Nut (3/16" n = 28) | 제어체운동 조절나사너트 (3/16" n=28) | 1 | |
| E-36 | APM-PS000800 | | Knee Lifting Link Assembly | 무릎 올림 링크 (조) | 1 | |
| E-37 | DSP-AC005100 | | Spring for E-36 | 무릎 올림 스프링 | 1 | |
| E-38 | DSC-BJ000400 | | Screw (11/64" n = 40) | 위뚜껑 꺾나사 (11/64" n=40) | 2 | |
| E-39 | AS-008495-00 | | Nut Screw Ass'y | 너트 나사(조) | 1Set | |



| Ref. No. | Parts No. | Note | Name of Parts | 품 명 | Q' ty | Applied Period |
|----------|--------------|------|-------------------------------|-------------------------------|-------|----------------|
| F-1 | ALB-PS001600 | | Oil Tank | 오일 탱크 (조) | 1 | |
| F-2 | CLB-FZ000300 | | Oil Tank Packing | 오일 탱크 패킹 | 1 | |
| F-3 | CLB-LA000600 | | Oil Tank Cover | 오일 탱크 누름판 | 1 | |
| F-4 | CLB-BQ000300 | | Oil Pipe For F-3 | 오일 탱크 오일 파이프 | 1 | |
| F-5 | DPK-CY001300 | | Rubber Cap For Oil Tank | 주유구마개 | 1 | |
| F-6 | DSC-BJ000400 | | Screw(11/64" n = 40) | 위뚜껑 쥘나사 (11/64" n=40) | 4 | |
| F-8 | CLB-JG000300 | | Oil Return Tube | 환류파이프 | 1 | |
| F-9 | CLB-JD000300 | | Oil Wick | 오일 심지 | 1 | |
| F-10 | CLB-JG000300 | | Oil Return Tube | 환류파이프 | 1 | |
| F-11 | CLB-BF000400 | | Oil Wick Holder For F-7,9 | 유심헬트고정판 | 1 | |
| F-12 | DSC-BJ001100 | | Screw(9/64" n = 40) | 톱카바 고정판 고정나사 (소) (9/64" n=40) | 1 | |
| F-13 | CLB-JD000300 | | Oil Wick | 오일 심지 | 1 | |
| F-14 | CLB-JG000300 | | Oil Return Tube | 환류파이프 | 1 | |
| F-15 | CLB-BH000400 | | Oil Wick Holder For F-14 | 헬트잡이스프링 | 1 | |
| F-16 | DSC-BJ001100 | | Screw(9/64" n = 40) | 톱카바 고정판 고정나사 (소) (9/64" n=40) | 1 | |
| F-17 | CLB-BF000500 | | Oil Wick Holder For Feed Link | 피이드링크 유심잡이 | 1 | |
| F-18 | CLB-JD000300 | | Oil Wick | 오일 심지 | 1 | |
| F-19 | CLB-JG000300 | | Oil Return Tube | 환류파이프 | 1 | |
| F-20 | CLB-BH000400 | | Oil Wick Holder For F-19 | 헬트잡이스프링 | 1 | |
| F-21 | DSC-BJ001100 | | Screw(9/64" n = 40) | 톱카바 고정판 고정나사 (소) (9/64" n=40) | 1 | |
| F-22 | CLB-BF000600 | | Oil Wick Holder For F-37 | 와이롯드 연결링 유심잡이 | 1 | |
| F-23 | DSC-BJ001400 | | Screw(9/64" n = 40) | 톱카바 고정판 고정나사 (대) (9/64" n=40) | 1 | |
| F-24 | CLB-BG001300 | | Oil Wick Holder For F-13, 18 | 유심헬트고정판 | 1 | |
| F-25 | DSC-BJ001100 | | Screw(9/64" n = 40) | 톱카바 고정판 고정나사 (소) (9/64" n=40) | 1 | |
| F-26 | CLB-JD000300 | | Oil Wick | 오일 심지 | 1 | |
| F-27 | CLB-JG000300 | | Oil Return Tube | 환류파이프 | 1 | |
| F-28 | CLB-BH000400 | | Oil Wick Holder For F-27 | 헬트잡이스프링 | 1 | |
| F-29 | CLB-JD000300 | | Oil Wick | 오일심지 | 1 | |
| F-30 | CLB-BF000600 | | Oil Wick Holder For F-29 | 와이롯드 연결링 유심잡이 | 1 | |
| F-31 | DSC-BA000900 | | Screw(9/64" n = 40) | 면판 측면 카바나사 (하) (9/64" n=40) | 1 | |
| F-32 | CLB-JD000300 | | Oil Wick | 유심 | 1 | |
| F-33 | CLB-JD000300 | | Oil wick | 유심 | 1 | |
| F-34 | CLB-JG000300 | | Oil Return Tube | 환류파이프 | 1 | |
| F-35 | CLB-BF000700 | | Oil Wick Holder For F-34 | 크랭크 릿드유심잡이 | 1 | |
| F-36 | DWS-AA001100 | | Washer For F-37 | 뒷뚜껑 쥘와셔 | 1 | |
| F-37 | DSC-BA000900 | | Screw(9/64" n = 40) | 면판 측면 카바나사(하) (9/64" n=40) | 1 | |
| F-38 | ALB-PS001600 | | Oil Tank | 오일 탱크 (조) | 1 | |
| F-39 | CLB-FZ000300 | | Oil Tank Packing | 오일 탱크 패킹 | 1 | |
| F-40 | CLB-JL006200 | | Oil Felt For B-62 | 하축 전 붓싱 급유헬트 | 1 | |
| F-41 | CLB-BQ000400 | | Oil Felt Pipe for F-40 | 하축 전 붓싱 급유파이프 | 1 | |
| F-42 | CLB-BF000800 | | Oil Felt Holder For F-41 | 하축 전 붓싱 급유헬트잡이 | 1 | |
| F-43 | DSC-BF003600 | | Screw(11/64" n = 40) | 실체기 카바나사 (11/64" n=40) | 1 | |
| F-44 | DWS-AA001100 | | Washer For F-45 | 뒷뚜껑 쥘와셔 | 4 | |
| F-45 | DSC-BJ000400 | | Screw (11/64" n = 40) | 윗뚜껑 쥘나사 (11/64" n=40) | 4 | |



Accessories
액세서리관계



| Ref. No. | Parts No. | Note | Name of Parts | 품 명 | Q' ty | Applied Period |
|----------|--------------|------|------------------------------|----------------------------|--------|----------------|
| G-1 | 91-006C-2700 | | Sewing Machine Cover | 미싱커버 (대) | 1 | |
| G-2 | CST-FF000400 | | Hinge Sheet Rubber | 힌지 고무 (대) | 2 | |
| G-3 | CST-FD002500 | | Rubber Base For Bed (A) | 힌지 고무 (중) | 2 | |
| G-4 | CST-FF000600 | | Rubber Base For Bed (B) | 힌지 고무 (소) | 2 | |
| G-5 | CST-BB002500 | | Head Hinge | 힌지 | 2 | |
| G-6 | PTL-BA000100 | | Driver (Large) | 드라이버 (대) | 1 | |
| G-7 | PTL-BA000200 | | Driver (Middle, Small) | 드라이버 (중, 소) | 1 | |
| G-8 | 91-001C-1230 | | Accessory Box | 액세서리박스 | 1 | |
| G-9 | CAC-JB000100 | | Oil Tank | 유차 | 1 | |
| G-10 | CST-JB000100 | | Oil Receiver | 유차병 | 1 | |
| G-11 | CST-MF000100 | | Spool Holder Assembly | 실폐곳이 (조) | 1 | |
| G-12 | | | Needle | 바늘 | 1(Set) | |
| G-13 | CGA-GA001500 | | Needle Plate | 침판 | 1 | |
| G-14 | CHK-HB000700 | | Bobbin | 보빈 | 4 | |
| G-15 | CST-CR000400 | | Head Rest | 미싱받침대 | 1 | |
| G-16 | 91-104C-1230 | | Attachment | 정규 | 1 | |
| G-17 | SC-0204-1230 | | Screw (9/64" n = 40) | 정규 쥘나사 (9/64" n = 40) | 1 | |
| G-18 | | | Nail | 못 | 6 | |
| G-19 | 41-101A-1230 | | Bobbin Winder Assembly | 실감기 (조) | 1 | |
| G-20 | CST-JA001900 | | Oil Pan | 유수판 | 1 | |
| G-21 | 43-007A-3400 | | Knee Lifting Ass'y | 무릎올림 (조) | 1 | |
| G-22 | CST-KC000300 | | Knee Lifter Arm | 무릎받침 축 | 1 | |
| G-23 | CST-FZ000200 | | Knee Lifter Pad | 무릎받침 고무 | 1 | |
| G-24 | CST-BJ000700 | | Knee Lifter Pad Holder | 무릎받침 고무 잡이판 | 1 | |
| G-25 | CST-CA000400 | | Connection Link For G-24 | 무릎받침 고무 연결링크 | 1 | |
| G-26 | DSC-AA002700 | | Set Screw For G-25 | 무릎받침 연결링크 쥘나사 | 1 | |
| G-27 | CST-KC000800 | | Knee Lifter Shaft | 무릎올림 축 | 1 | |
| G-28 | CST-CB000300 | | Connection Crank For G-22 | 무릎받침 연결 크랭크 | 1 | |
| G-29 | DSC-CC000100 | | Screw (5/16" n = 28) | 무릎받침 축 고정나사 (5/16" n = 28) | 2 | |
| G-30 | CST-CB000400 | | Stopper Crank | 무릎올림 스톱퍼 | 1 | |
| G-31 | DSC-CC000100 | | Screw (5/16" n = 28) | 무릎받침 축 고정나사 (5/16" n = 28) | 1 | |
| G-32 | CST-CB000200 | | Connection Crank For G-34 | 무릎올림 조절판 연결크랭크 | 1 | |
| G-33 | DSC-CC000100 | | Screw (5/16" n = 28) | 무릎받침 축 고정나사 (5/16" n = 28) | 2 | |
| G-34 | CST-BJ000600 | | Knee Lifting Adjusting Plate | 무릎올림 조절판 | 1 | |
| G-35 | CST-BB003500 | | Bracket For G-26 | 무릎올림 축 브라켓 | 2 | |
| G-36 | DSP-AC005200 | | Return Spring For G-22 | 무릎받침 축 리턴스프링 | 1 | |
| G-37 | PSC-DD000100 | | Screw For G-35 | 목나사 | 4 | |
| G-38 | CAC-JB000200 | | Oil | 오일캔 | 1 | |
| G-39 | 60-101A-3400 | | Belt Cover Ass'y | 벨트커버 (조) | 1(Set) | |
| G-40 | GP-03765-00 | | Belt Cover A | 벨트커버 (A) | 1 | |

INDEX

| Parts No. | Name of Parts | Page | Ref.No. |
|--------------|---------------------------------|------|---------|
| 01-001A-3400 | Arm Bed Ass'y | 7 | A-1 |
| 01-035P-1370 | Machine Number Plate | 7 | A-37 |
| 01-035P-7400 | Setting Pin For A-37 | 7 | A-38 |
| 15-129A-3400 | Upper Feed Adjusting Shaft | 15 | C-58 |
| 41-101A-1230 | Belt Cover Ass'y | 25 | G-19 |
| 43-007A-3400 | Accessory Box | 25 | G-21 |
| 60-101A-3400 | Sewing Machine Cover | 25 | G-39 |
| 91-001C-1230 | Attachment | 25 | G-8 |
| 91-006C-2700 | Knee Lifter Arm | 25 | G-1 |
| 91-104C-1230 | Feed Regulator Arm | 25 | G-16 |
| AFA-PS000300 | Oil Tank | 19 | D-56 |
| ALB-PS001600 | Oil Tank | 23 | F-1 |
| ALB-PS001600 | Thread Guide With Three Holes | 23 | F-38 |
| AMB-PS000800 | Nut For A-30 | 7 | A-18 |
| AMB-PS000800 | Knee Lifting Link Assembly | 7 | A-30-1 |
| APM-PS000800 | Nut Screw Ass'y | 21 | E-36 |
| AS-008495-00 | Tension Completed Ass'y | 21 | E-39 |
| ATA-PS002800 | Gear Case Ass'y (Upper) | 7 | A-11 |
| AUR-PS000100 | Gear Case Ass'y (Lower) | 9 | B-34 |
| AUR-PS000200 | Oil Tank | 11 | B-48 |
| CAC-JB000100 | Oil | 25 | G-9 |
| CAC-JB000200 | Suspension Bracket | 25 | G-38 |
| CFA-BB001000 | Tension Spring Suspension Plate | 19 | D-67 |
| CFA-BB001100 | Feed Link | 19 | D-64 |
| CFA-CA001100 | Reverse Feed Control Lever | 19 | D-39 |
| CFA-CM001200 | Stitch Length Adjusting Dial | 19 | D-61 |
| CFA-CQ000900 | Feed Regulator | 19 | D-54 |
| CFA-DF000600 | Feed Regulator Shaft | 19 | D-43 |
| CFA-KC001000 | Feed Lever Shaft | 19 | D-49 |
| CFA-KF000400 | Connection Shaft For D-43 | 19 | D-59 |
| CFA-KH000100 | Stitch Length Adjusting Screw | 19 | D-42 |
| CFA-KJ000800 | Needle Plate | 19 | D-50 |
| CGA-GA001500 | Needle Plate | 7 | A-40 |
| CGA-GA001500 | Bobbin Winder Assembly | 25 | G-13 |
| CGA-GB001500 | Feed Dog | 17 | D-16 |
| CGA-GC002200 | Sub-Presser Foot | 21 | E-2 |
| CGA-GC002300 | Main Presser Foot Assembly | 13 | C-1 |
| CHK-HA001200 | Rotary Hook | 11 | B-65 |
| CHK-HB000700 | Bobbin | 11 | B-66 |
| CHK-HB000700 | Bobbin | 25 | G-14 |
| CHK-HC000500 | Oil Pan | 11 | B-67 |
| CHK-HH000400 | Bobbin Case Ass'y | 11 | B-68 |
| CLB-BF000400 | Hook Retainer | 23 | F-11 |
| CLB-BF000500 | Oil Wick Holder For F-7,9 | 23 | F-17 |
| CLB-BF000600 | Oil Wick Holder For Feed Link | 23 | F-22 |
| CLB-BF000600 | Oil Wick Holder For F-37 | 23 | F-30 |
| CLB-BF000700 | Oil Wick Holder For F-29 | 23 | F-35 |
| CLB-BF000800 | Oil Wick Holder For F-34 | 23 | F-42 |
| CLB-BG001300 | Oil Felt Holder For F-41 | 23 | F-24 |
| CLB-BG004500 | Oil Wick Holder For F-13, 18 | 7 | A-15 |
| CLB-BH000300 | Upper Thread Oil Felt Case | 21 | E-7 |
| CLB-BH000400 | Retainer For Oil Tube | 23 | F-15 |
| CLB-BH000400 | Oil Wick Holder For F-14 | 23 | F-20 |
| CLB-BH000400 | Oil Wick Holder For F-19 | 23 | F-28 |
| CLB-BH001800 | Oil Wick Holder For F-27 | 15 | C-63 |
| CLB-BH001800 | Oil Felt Holder For C-61 | 19 | D-38 |
| CLB-BQ000300 | Oil Felt Holder For D-36 | 23 | F-4 |
| CLB-BQ000400 | Oil Pipe For F-3 | 23 | F-41 |
| CLB-FZ000300 | Oil Felt Pipe For F-40 | 23 | F-2 |
| CLB-FZ000300 | Oil Tank Packing | 23 | F-39 |
| CLB-JD000300 | Oil Tank Packing | 7 | A-19 |

| Parts No. | Name of Parts | Page | Ref.No. |
|--------------|---|------|---------|
| CLB-JD000300 | Oil Wick | 23 | F-9 |
| CLB-JD000300 | Oil Wick | 23 | F-13 |
| CLB-JD000300 | Oil Wick | 23 | F-18 |
| CLB-JD000300 | Oil Wick | 23 | F-26 |
| CLB-JD000300 | Oil Wick | 23 | F-29 |
| CLB-JD000300 | Oil Wick | 23 | F-32 |
| CLB-JD000300 | Oil Wick | 23 | F-33 |
| CLB-JF001300 | Oil wick | 7 | A-21 |
| CLB-JF001400 | Oil Pipe (C) | 7 | A-22 |
| CLB-JG000300 | Oil Pipe (A) | 23 | F-8 |
| CLB-JG000300 | Oil Return Tube | 23 | F-10 |
| CLB-JG000300 | Oil Return Tube | 23 | F-14 |
| CLB-JG000300 | Oil Return Tube | 23 | F-19 |
| CLB-JG000300 | Oil Return Tube | 23 | F-27 |
| CLB-JG000300 | Oil Return Tube | 23 | F-34 |
| CLB-JL006200 | Oil Return Tube | 23 | F-40 |
| CLB-JL007300 | Oil Felt For B-62 | 7 | A-17 |
| CLB-JL007400 | Upper Thread Oil Felt | 9 | B-3 |
| CLB-JL007500 | Oil Felt For B-2 | 9 | B-8 |
| CLB-JL007500 | Oil Felt For B-7 | 9 | B-13 |
| CLB-JL007600 | Oil Felt For B-12 | 19 | D-37 |
| CLB-JL007700 | Oil Felt For D-36 | 15 | C-62 |
| CLB-JL008100 | Oil Felt For C-61 | 7 | A-23 |
| CLB-LA000600 | Oil Felt For Thread Take-Up Lever | 23 | F-3 |
| CLF-BA000400 | Oil Tank Cover | 17 | D-15 |
| CLF-BN000100 | Feed Bar | 19 | D-36 |
| CLF-CB002300 | Connection Screw For Y-Rod | 17 | D-10 |
| CLF-CB002400 | Feed Rocker Ass'y | 17 | D-24 |
| CLF-CB002500 | Feed Lifting shaft Crank (Front) | 17 | D-18 |
| CLF-CC000200 | Feed Rocker Shaft Crank | 17 | D-31 |
| CLF-CC000900 | Crank Rod | 19 | D-35 |
| CLF-CD001000 | Y-Rod | 17 | D-27 |
| CLF-DC001200 | Sliding Block | 17 | D-32 |
| CLF-KC000900 | Feed Cam | 17 | D-12 |
| CLF-KC001000 | Feed Bar Shaft | 17 | D-26 |
| CLF-KF000600 | Slide Block For D-15 | 17 | D-1 |
| CLF-KG000300 | Feed Rocker Shaft | 17 | D-22 |
| CLS-KC002100 | Feed Lifting Shaft | 11 | B-53 |
| CMB-BJ004900 | Lower Shaft | 7 | A-2 |
| CMB-BJ005000 | Face Plate | 7 | A-42 |
| CMB-FC004700 | Holder For Attachment | 7 | A-25 |
| CMB-HK002000 | Packing For A-24 | 7 | A-30 |
| CMB-HK005900 | Supplementary Tension | 7 | A-7 |
| CMB-HK006000 | Thread Guide For A-1 | 7 | A-13 |
| CMB-LA013100 | Thread Guide Front | 7 | A-9 |
| CMB-LA013200 | Cover For Take - Up Lever | 7 | A-28 |
| CMB-LA013300 | Top Cover | 7 | A-31 |
| CMB-LB004400 | Side Cover | 7 | A-39 |
| CMB-LB006700 | Slide Plate Ass'y | 7 | A-24 |
| CMB-LD001900 | Oil Tank Cover For Thread Take-Up Lever | 7 | A-36 |
| CNB-BK001000 | Model Mark | 9 | B-24 |
| CNB-CR000200 | Sliding Block For B-22 | 9 | B-25 |
| CNB-HK001400 | Needle Bar | 9 | B-31 |
| CPB-BF000900 | Thread Guide For B-26 | 21 | E-8 |
| CPB-BH000800 | Bracket For Presser Bar Lifter | 21 | E-3 |
| CPB-BK000300 | Needle Safety Wire | 21 | E-13 |
| CPB-CL000400 | Guide Frame For E-8 | 21 | E-12 |
| CPB-CM000600 | Roller For E-8 | 21 | E-19 |
| CPB-CR000200 | Presser Bar Lifter | 21 | E-1 |
| CPM-BF000100 | Presser Bar | 21 | E-32 |
| CPM-CM001600 | Connection Holder | 21 | E-23 |

| Parts No. | Name of Parts | Page | Ref.No. |
|--------------|----------------------------------|------|---------|
| CPM-CR000600 | Knee Lifting Lever | 21 | E-34 |
| CST-BB002500 | Knee Lifter Pull Rod | 25 | G-5 |
| CST-BB003500 | Head Hinge | 25 | G-35 |
| CST-BJ000600 | Bracket For G-26 | 25 | G-34 |
| CST-BJ000700 | Knee Lifting Adjusting Plate | 25 | G-24 |
| CST-CA000400 | Knee Lifter Pad Holder | 25 | G-25 |
| CST-CB000200 | Connection Link For G-24 | 25 | G-32 |
| CST-CB000300 | Connection Crank For G-34 | 25 | G-28 |
| CST-CB000400 | Connection Crank For G-22 | 25 | G-30 |
| CST-CR000400 | Stopper Crank | 25 | G-15 |
| CST-FD002500 | Head Rest | 25 | G-3 |
| CST-FF000400 | Knee Lifting Ass'y | 25 | G-2 |
| CST-FF000600 | Rubber Base For Bed (A) | 25 | G-4 |
| CST-FZ000200 | Hinge Sheet Rubber | 25 | G-23 |
| CST-JA001900 | Rubber Base For Bed (B) | 25 | G-20 |
| CST-JB000100 | Oil Receiver | 25 | G-10 |
| CST-KC000300 | Knee Lifter Shaft | 25 | G-22 |
| CST-KC000800 | Spool Holder Assembly | 25 | G-27 |
| CST-MF000100 | Tension Past Socket | 25 | G-11 |
| CTA-BA000200 | Ratchet For A-11-10 | 7 | A-11-2 |
| CTA-BJ000100 | Tension Release Washer | 7 | A-11-9 |
| CTA-BJ000200 | Tension Disk | 7 | A-11-7 |
| CTA-HL000100 | Tension Stud | 7 | A-11-6 |
| CTA-HM000500 | Thread Take -Up Lever Ass'y | 7 | A-11-5 |
| CTH-HJ001800 | Tension Release Plate | 9 | B-22 |
| CTR-BJ001500 | Tension Release Plate Cover | 21 | E-25 |
| CTR-LB000100 | Screw (11/64" n = 40) | 21 | E-28 |
| CTT-CA000400 | Frame For C-40 | 21 | E-15 |
| CUF-BA000200 | Support Plate For C-35 | 15 | C-35 |
| CUF-BA000300 | Support Plate For C-35 | 15 | C-40 |
| CUF-BB000100 | Holder For C-2 | 15 | C-42 |
| CUF-BF000100 | Upper Feed Lever Support Plate | 13 | C-4 |
| CUF-BJ000100 | Support Ring For C-32 | 13 | C-32 |
| CUF-BN000100 | Support Ring For E-25 | 15 | C-34 |
| CUF-BN000100 | L-Shaped Link | 21 | E-27 |
| CUF-CA000300 | Upper Feed Adjusting Link | 15 | C-44 |
| CUF-CA000400 | Crank For C-53 | 13 | C-9 |
| CUF-CB000400 | Upper Feed Adjusting Crank | 15 | C-51 |
| CUF-CB000500 | Upper Feed Adjusting Crank | 15 | C-56 |
| CUF-CB000600 | Crank For C-20 | 13 | C-18 |
| CUF-CB000700 | Upper Feed Driving Rod (Large) | 13 | C-25 |
| CUF-CC000400 | Upper Feed Driving Shaft Rod | 15 | C-46 |
| CUF-CC000500 | Upper Feed Driving Rod (Small) | 13 | C-27 |
| CUF-CC000600 | Connecting Rod For C-64 | 13 | C-5 |
| CUF-CC000700 | Block For C-13 | 15 | C-61 |
| CUF-CD000100 | Upper Feed Lever | 13 | C-14 |
| CUF-CM000100 | Feed Driving Eccentric Cam | 13 | C-2 |
| CUF-DC000100 | Upper Feed Driving Shaft (Small) | 15 | C-64 |
| CUF-KC000100 | Upper Feed Driving Shaft (Large) | 15 | C-53 |
| CUF-KC000200 | Sub-Pressure Adjusting Pole | 13 | C-20 |
| CUF-KC000300 | Upper Feed Adjusting Shaft | 15 | C-39 |
| CUF-KZ000100 | Upright Shaft | 13 | C-13 |
| CUR-KC000300 | Counter Weight | 11 | B-39 |
| CUS-DA001800 | Main Shaft | 9 | B-18 |
| CUS-KC001700 | Needle Bar Bushing (Upper) | 9 | B-1 |
| DBS-DA003400 | Main Shaft Bushing (Center) | 9 | B-26 |
| DBS-DA016900 | Needle Bar Bushing (Lower) | 9 | B-7 |
| DBS-DA017000 | Upright Shaft Bushing (Upper) | 9 | B-29 |
| DBS-DA017100 | Upright Shaft Bushing (Lower) | 11 | B-42 |
| DBS-DA017200 | Lower Shaft Bushing (Rear) | 11 | B-44 |
| DBS-DA017300 | Lower Shaft Bushing (Center) | 11 | B-56 |

INDEX

| Parts No. | Name of Parts | Page | Ref.No. |
|--------------|--|------|---------|
| DBS-DA017400 | Lower Shaft Bushing (Front) | 11 | B-60 |
| DBS-DA017500 | Bushing For D-49 | 11 | B-61 |
| DBS-DA017800 | Bushing For D-1 (Front) | 19 | D-47 |
| DBS-DA017900 | Bushing For D-1 (Center) | 17 | D-2 |
| DBS-DA018000 | Bushing For D-1 (Rear) | 17 | D-4 |
| DBS-DA018100 | Bushing for E-1 | 17 | D-8 |
| DBS-DA018200 | Bushing For C-53 | 21 | E-5 |
| DBS-DA018300 | Bushing For C-20 (Front) | 15 | C-54 |
| DBS-DA018400 | Bushing For C-20 (Rear) | 13 | C-21 |
| DBS-DA018500 | Main Shaft Bushing (Front) | 13 | C-23 |
| DBS-DB005100 | Main Shaft Bushing (Rear) | 9 | B-2 |
| DBS-DB005200 | Main Shaft Collar | 9 | B-12 |
| DCL-AA000102 | Lower Shaft Collar | 9 | B-5 |
| DCL-AA003700 | Thrust Collar Ass'y | 11 | B-58 |
| DCL-AA006400 | Main Shaft Gear | 17 | D-6 |
| DGR-AD000100 | Upright Shaft Gear (Upper) | 9 | B-10 |
| DGR-AD000200 | Upright Shaft Gear (Lower) | 11 | B-40 |
| DGR-AD000300 | Lower Shaft Gear (Rear) | 11 | B-46 |
| DGR-AD000400 | Gear Case Retainer (Main Shaft) | 11 | B-54 |
| DPK-AZ000600 | Gear Case Retainer (Upright Shaft Upper) | 9 | B-35 |
| DPK-AZ000700 | Gear Case Retainer (Upr Shaft Lower) | 9 | B-36 |
| DPK-AZ000900 | Gear Case Retainer (Lower Shaft.) | 11 | B-49 |
| DPK-AZ001000 | Cap For B-12 | 11 | B-50 |
| DPK-CA002800 | Rubber Plug (Needle Bar Adjusting Hole) | 7 | A-43 |
| DPK-CB000200 | Rubber Plug For A-1 | 7 | A-4 |
| DPK-CB000200 | Rubber Plug (Needle Bar Adjusting Hole) | 7 | A-33 |
| DPK-CB000900 | Oil Cap | 7 | A-44 |
| DPK-CB001100 | Rubber Plug For A-2 | 7 | A-26 |
| DPK-CB001800 | Rubber Cap For B-6 | 7 | A-3 |
| DPK-CB002300 | Rubber Plug For A-1 | 9 | B-28 |
| DPK-CB002800 | Oil cap (small) | 7 | A-34 |
| DPK-CY001200 | Rubber Cap For Oil Tank | 11 | B-71 |
| DPK-CY001300 | Pulley | 23 | F-5 |
| DPL-AA000800 | Tension Release Pin | 9 | B-15 |
| DPN-AA003800 | Feed Regulator Dial Pin | 7 | A-11-1 |
| DPN-AA008600 | Tension Release Pin | 19 | D-52 |
| DPN-AA011100 | Hinge Pin For E-19 | 21 | E-30 |
| DPN-AD007900 | Connection Pin For C-27 | 21 | E-20 |
| DPN-AD008000 | Connecting Pin For D-35 | 13 | C-30 |
| DPN-AD008000 | Set. Screw For G-25 | 17 | D-20 |
| DSC-AA002700 | Screw (15/64" n=28) | 25 | G-26 |
| DSC-AA002900 | Screw (15/64" n=28) | 13 | C-19 |
| DSC-AA002900 | Screw (15/64" n=28) | 15 | C-52 |
| DSC-AA002900 | Screw (9/64" n=40) | 15 | C-57 |
| DSC-BA000100 | Screw (9/64" n=40) | 7 | A-8 |
| DSC-BA000100 | Screw (3/16" n=28) | 7 | A-16 |
| DSC-BA000400 | Screw (3/16" n=32) | 19 | D-57 |
| DSC-BA000700 | Screw (9/64" n=40) | 19 | D-68 |
| DSC-BA000900 | Screw (9/64" n=40) | 7 | A-32 |
| DSC-BA000900 | Screw (9/64" n=40) | 13 | C-3 |
| DSC-BA000900 | Screw (9/64" n=40) | 23 | F-31 |
| DSC-BA000900 | Screw (11/64" n=40) | 23 | F-37 |
| DSC-BA001000 | Screw (1/4" n=28) | 17 | D-28 |
| DSC-BA001300 | Screw (3/16" n=32) | 17 | D-19 |
| DSC-BA001400 | Screw (9/64" n=40) | 19 | D-62 |
| DSC-BA001700 | Screw (11/64" n=40) | 21 | E-4 |
| DSC-BA003000 | Screw (11/64" n=40) | 7 | A-5 |
| DSC-BC000100 | Screw (1/8" n=44) | 7 | A-41 |
| DSC-BF000100 | Screw (15/64" n=28) | 9 | B-32 |
| DSC-BF000400 | Screw (15/64" n=28) | 13 | C-31 |
| DSC-BF000400 | Screw (15/64" n=28) | 17 | D-21 |

| Parts No. | Name of Parts | Page | Ref.No. |
|--------------|------------------------------|------|---------|
| DSC-BF000400 | Screw (15/64" n=28) | 19 | D-44 |
| DSC-BF000700 | Screw (15/64" n=28) | 19 | D-46 |
| DSC-BF000800 | Screw (3/16" n=28) | 9 | B-16 |
| DSC-BF001100 | Screw (3/16" n=28) | 17 | D-25 |
| DSC-BF001100 | Screw (11/64" n=40) | 19 | D-65 |
| DSC-BF001200 | Screw (11/64" n=40) | 7 | A-6 |
| DSC-BF001200 | Screw (1/8" n=44) | 7 | A-29 |
| DSC-BF001800 | Screw (3/16" n=28) | 17 | D-17 |
| DSC-BF001900 | Screw (11/64" n=40) | 19 | D-55 |
| DSC-BF003100 | Screw (11/64" n=40) | 11 | B-70 |
| DSC-BF003100 | Screw (11/64" n=40) | 19 | D-58 |
| DSC-BF003600 | Screw (11/64" n=40) | 17 | D-14 |
| DSC-BF003600 | Screw (9/32" n=28) | 23 | F-43 |
| DSC-BF003700 | Screw (9/32" n=28) | 9 | B-19 |
| DSC-BF011500 | Screw (1/4" n=24) | 9 | B-20 |
| DSC-BF013600 | Screw (1/4" n=24) | 11 | B-38 |
| DSC-BF013600 | Oil Adjusting Screw For B-61 | 11 | B-52 |
| DSC-BF013700 | Screw (9/32" n=28) | 11 | B-63 |
| DSC-BF013800 | Screw (5/16" n=24) | 15 | C-37 |
| DSC-BG000200 | Screw (11/64" n=40) | 9 | B-17 |
| DSC-BJ000200 | Screw (11/64" n=40) | 7 | A-10 |
| DSC-BJ000200 | Screw (11/64" n=40) | 7 | A-27 |
| DSC-BJ000200 | Screw (11/64" n=40) | 21 | E-29 |
| DSC-BJ000400 | Screw (11/64" n=40) | 13 | C-33 |
| DSC-BJ000400 | Screw (11/64" n=40) | 15 | C-36 |
| DSC-BJ000400 | Screw (11/64" n=40) | 21 | E-38 |
| DSC-BJ000400 | Screw (11/64" n=40) | 23 | F-6 |
| DSC-BJ000400 | Screw (9/64" n=40) | 23 | F-45 |
| DSC-BJ001100 | Screw (9/64" n=40) | 23 | F-12 |
| DSC-BJ001100 | Screw (9/64" n=40) | 23 | F-16 |
| DSC-BJ001100 | Screw (9/64" n=40) | 23 | F-21 |
| DSC-BJ001100 | Screw (9/64" n=40) | 23 | F-25 |
| DSC-BJ001400 | Screw (3/16" n=32) | 23 | F-23 |
| DSC-BJ002400 | Screw (15/64" n=28) | 19 | D-63 |
| DSC-BJ003800 | Screw (3/16" n=28) | 19 | D-45 |
| DSC-BJ005100 | Screw (15/64" n=28) | 17 | D-11 |
| DSC-CA000100 | Screw (15/64" n=28) | 7 | A-12 |
| DSC-CA000100 | Screw (15/64" n=28) | 11 | B-43 |
| DSC-CA000100 | Screw (15/64" n=28) | 11 | B-45 |
| DSC-CA000100 | Screw (15/64" n=28) | 11 | B-57 |
| DSC-CA000100 | Screw (15/64" n=28) | 11 | B-64 |
| DSC-CA000100 | Screw (15/64" n=28) | 13 | C-22 |
| DSC-CA000100 | Screw (15/64" n=28) | 13 | C-24 |
| DSC-CA000100 | Screw (15/64" n=28) | 15 | C-55 |
| DSC-CA000100 | Set Screw For A-11-5 | 17 | D-3 |
| DSC-CA000200 | Screw (1/4" n=40) | 7 | A-11-3 |
| DSC-CA000500 | Screw (1/4" n=40) | 9 | B-11 |
| DSC-CA000500 | Screw (1/4" n=40) | 9 | B-21 |
| DSC-CA000500 | Screw (1/4" n=40) | 11 | B-41 |
| DSC-CA000500 | Screw (1/4" n=40) | 11 | B-47 |
| DSC-CA000500 | Screw (1/4" n=40) | 11 | B-55 |
| DSC-CA000500 | Screw (1/4" n=40) | 13 | C-26 |
| DSC-CA000500 | Screw (1/4" n=40) | 15 | C-65 |
| DSC-CA000500 | Screw (1/4" n=40) | 17 | D-7 |
| DSC-CA000500 | Screw (11/64" n=40) | 21 | E-9 |
| DSC-CA000600 | Screw (11/64" n=40) | 7 | A-14 |
| DSC-CA000600 | Screw (15/64" n=28) | 21 | E-21 |
| DSC-CA000800 | Screw (15/64" n=28) | 9 | B-4 |
| DSC-CA000800 | Screw (15/64" n=28) | 9 | B-9 |
| DSC-CA000800 | Screw (15/64" n=28) | 9 | B-14 |
| DSC-CA000800 | Screw (15/64" n=28) | 9 | B-23 |

| Parts No. | Name of Parts | Page | Ref.No. |
|--------------|----------------------------|------|---------|
| DSC-CA000800 | Screw (15/64" n=28) | 17 | D-5 |
| DSC-CA000800 | Screw (15/64" n=28) | 17 | D-9 |
| DSC-CA000800 | Screw (1/4" n=40) | 19 | D-48 |
| DSC-CA001100 | Screw (11/64" n=40) | 9 | B-6 |
| DSC-CA002400 | Screw (11/64" n=40) | 9 | B-27 |
| DSC-CA002400 | Screw (11/64" n=40) | 9 | B-30 |
| DSC-CA002400 | Screw (15/64" n=28) | 21 | E-6 |
| DSC-CA003500 | Screw (3/8" n=28) | 17 | D-33 |
| DSC-CA003600 | Screw (11/64" n=40) | 17 | D-23 |
| DSC-CB000300 | Screw (5/16" n=28) | 11 | B-59 |
| DSC-CC000100 | Screw (5/16" n=28) | 25 | G-29 |
| DSC-CC000100 | Screw (5/16" n=28) | 25 | G-31 |
| DSC-CC000100 | Hinge Screw For E-25 | 25 | G-33 |
| DSC-FA007300 | Connection Screw For D-31 | 21 | E-26 |
| DSC-FA015200 | Connection Screw For D-43 | 17 | D-29 |
| DSC-FA015200 | Hinge Screw For C-27 | 19 | D-40 |
| DSC-FA015300 | Hinge Screw For C-5 | 13 | C-28 |
| DSC-FA015400 | Hinge Screw For C-46 | 13 | C-6 |
| DSC-FA015400 | Hinge Screw For C-8 | 15 | C-47 |
| DSC-FA015500 | Hinge Screw For C-51 | 15 | C-45 |
| DSC-FA015600 | Hinge Screw For C-9 | 15 | C-48 |
| DSC-FA015700 | Hinge Screw For C-5 | 13 | C-10 |
| DSC-FA015800 | Hinge Screw For C-2 | 13 | C-7 |
| DSC-FA016000 | Hinge Screw For E-32 | 15 | C-43 |
| DSC-FD000300 | Hinge Screw For E-23 | 21 | E-33 |
| DSC-FD001400 | Guide Shaft For E-8 | 21 | E-24 |
| DSC-FG001200 | Screw (9/16" n=20) | 21 | E-10 |
| DSC-HA000500 | Nut For A-18 | 21 | E-17 |
| DSN-AA000100 | Nut (15/64" n=28) | 7 | A-18-1 |
| DSN-AA000400 | Nut (15/64" n=28) | 13 | C-8 |
| DSN-AA000400 | Nut (1/4" n=40) | 15 | C-50 |
| DSN-AA000500 | Nut (3/16" n=28) | 13 | C-17 |
| DSN-AA000800 | Nut (1/4" n=40) | 21 | E-35 |
| DSN-AA001300 | Nut (9/32" n=28) | 21 | E-11 |
| DSN-AA002200 | Nut (9/32" n=28) | 13 | C-12 |
| DSN-AA002200 | Nut (9/32" n=28) | 13 | C-29 |
| DSN-AA002200 | Nut (9/32" n=28) | 15 | C-38 |
| DSN-AA002200 | Nut (9/32" n=28) | 17 | D-30 |
| DSN-AA002200 | Nut For D-23 | 19 | D-41 |
| DSN-AA003600 | Nut (9/16" n=20) | 17 | D-23-1 |
| DSN-CC000600 | Tension Adjusting Knob | 21 | E-18 |
| DSN-CD000200 | Nut For C-58 | 7 | A-11-10 |
| DSN-CZ000800 | Feed Regulator Dial Spring | 15 | C-60 |
| DSP-AA002800 | Spring For C-35 | 19 | D-53 |
| DSP-AA007800 | Presser Spring | 15 | C-41 |
| DSP-AA007800 | Spring For B-63 | 21 | E-16 |
| DSP-AA008000 | Spring For D-61 | 11 | B-62 |
| DSP-AB003500 | Spring for E-36 | 19 | D-66 |
| DSP-AC005100 | Return Spring For G-22 | 21 | E-37 |
| DSP-AC005200 | Tension Spring | 25 | G-36 |
| DSP-BA002300 | Checking Spring | 7 | A-11-8 |
| DSP-BB000200 | Stopper C-Ring | 7 | A-11-4 |
| DSR-AA000100 | Washer For F-37 | 17 | D-34 |
| DWS-AA001100 | Washer For F-45 | 23 | F-36 |
| DWS-AA001100 | Washer For C-58 | 23 | F-44 |
| DWS-AA005400 | Washer For C-10 | 15 | C-59 |
| DWS-AA011800 | Washer For C-13 | 13 | C-11 |
| DWS-AA014400 | Washer For C-48 | 13 | C-16 |
| DWS-AA014400 | Spring Washer For B-70 | 15 | C-49 |
| DWS-CA000100 | Lever Washer For D-59 | 11 | B-69 |
| DWS-CB000200 | Belt Cover A | 19 | D-60 |



SunStar CO., LTD.

HEAD OFFICE

178-212, GAJWA-DONG, SEO-KU, INCHON, KOREA
TEL : (032) 580 - 5600 ~ 4 FAX : (032) 584 - 3020

TRADE OFFICE

178-212, GAJWA-DONG, SEO-KU, INCHON, KOREA
TEL : (032) 580 - 5740 ~ 60 FAX : (032) 584 - 3025 ~ 6

OVERSEAS NETWORK

SUNSTAR MACHINERY U.S.A., INC.

11475, N.W. 39TH ST. Miami, Florida 33178, USA
TEL : 1-305-591-9596 FAX:1-305-591-0661

SUNSTAR MACHINERY HONGKONG LTD.

RM. 1302, Apec Plaza, No. 49 Hoi Yuen RD,
Kwun Tong, Kln. H. K.
TEL: 852-2729-7078, 852-2729-7224 FAX:852-2729-7573

SUNSTAR MACHINERY SHANG HAI LTD. (CHINA)

#7 Yuangong Rd. Shanghai International Automobiles City
Components Sub-Assembly Industrial Zone Jiading Shaghai China
TEL: 86-21-69576305, 69576306 FAX:86-21-69576091, 69576093

SUNSTAR MACHINERY GUANG DONG BRANCH (CHINA)

Luosha Daxia 12TH Floor 170 Dong Xing-Road, Dong Guan
Shicheng Qu, Guang Dong, China
TEL: 86-769-249-1610 FAX:86-769-234-4042

SUNSTAR MACHINERY FUJIAN BRANCH (CHINA)

504, Agricultural Bank Building Shishi Fujian, China
TEL: 86-595-859-8871 FAX:86-595-859-8872

SUNSTAR MACHINERY QINGDAO BRANCH (CHINA)

Chengyangqu Liutingzhen Chongyanglu Shoufeizhan
Beiduan Shangpinlou Qingdao Shandong, China
TEL: 86-532-482-2236, 86-532-481-1262 FAX:86-532-481-1262

SUNSTAR MACHINERY JAKARTA BRANCH

JL. Pelepah Indah Raya Bloc LC 2/2 Kelapa Gading Permai
Jakarta(14250) Indonesia
TEL: 62-21-450-2143, 62-21-4584-0752 FAX:62-21-4584-0214

SUNSTAR MACHINERY HOCHIMINH BRANCH (VIETNAM)

#E23 Nguyen Thai Binh ST. W. 12 Tan Binh District,
Hochiminh City, Vietnam
TEL: 84-8-811-4141 FAX:84-8-811-4588

SUNSTAR MACHINERY HANOI BRANCH (VIETNAM)

19 Son Tay. W. Dien Bien Ba Dinh Dist., Hanoi, Vietnam
TEL: 84-4-734-0268 FAX:84-4-734-0278

WEB-SITE

<http://www.sunstar.co.kr>

E-MAIL

sunstar@sunstar.co.kr
swf@sunstar.co.kr
fortuna@sunstar.co.kr