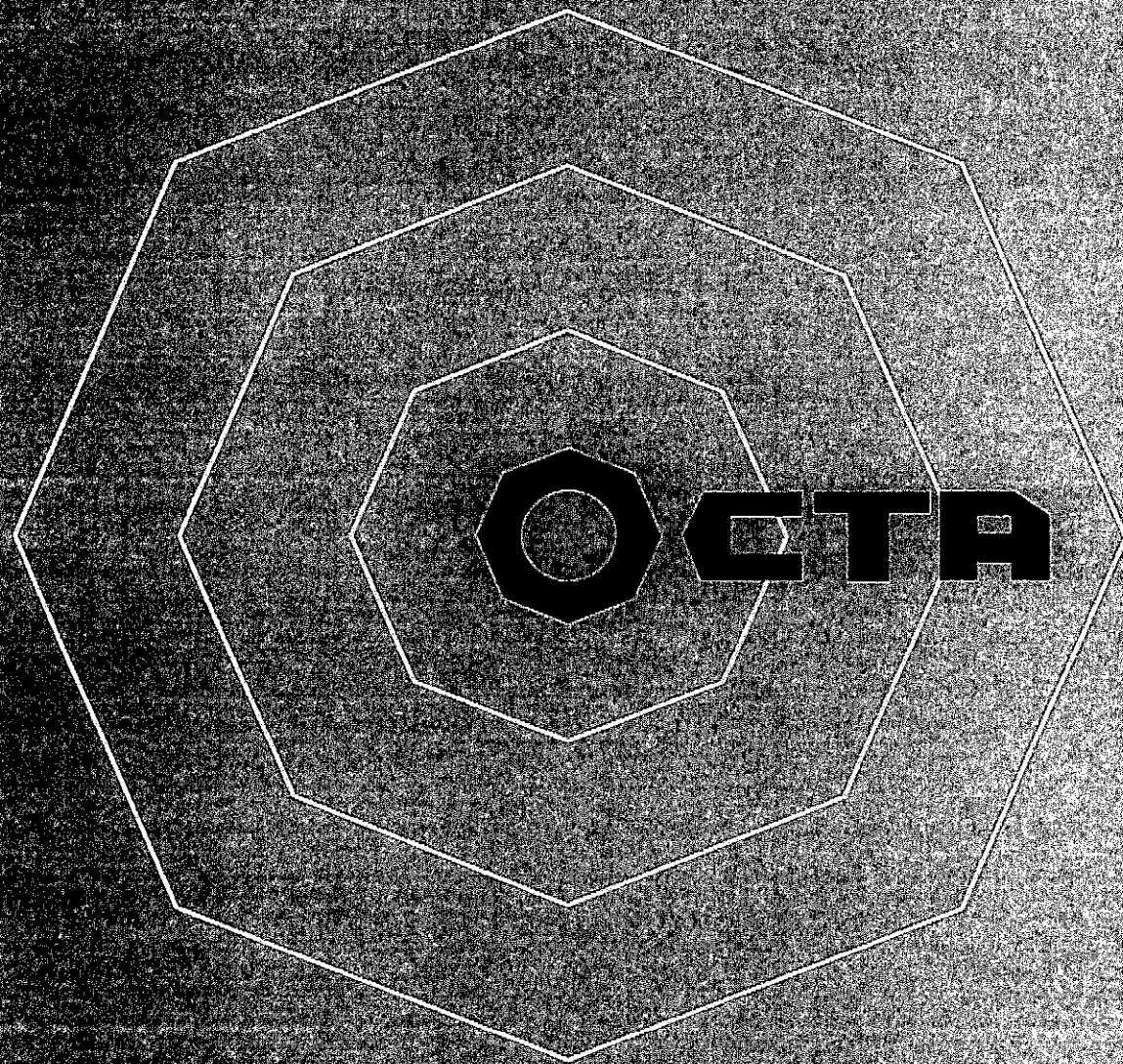


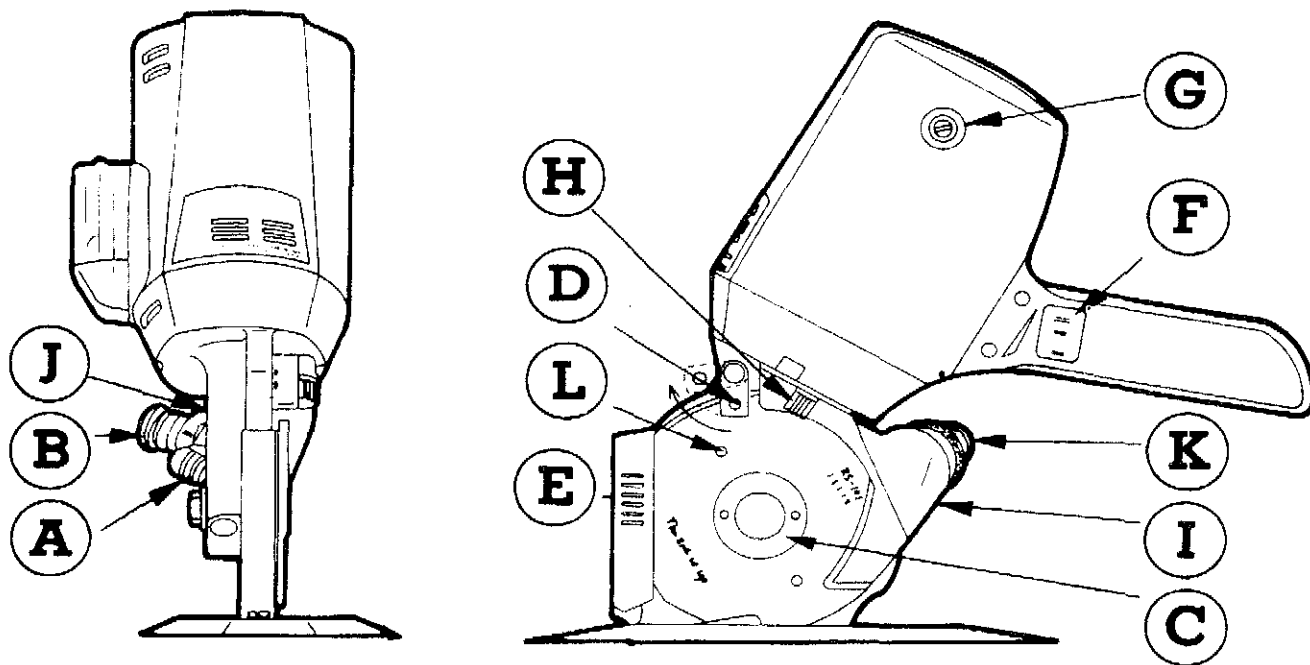
# INSTRUCTION BOOK AND PARTS LIST



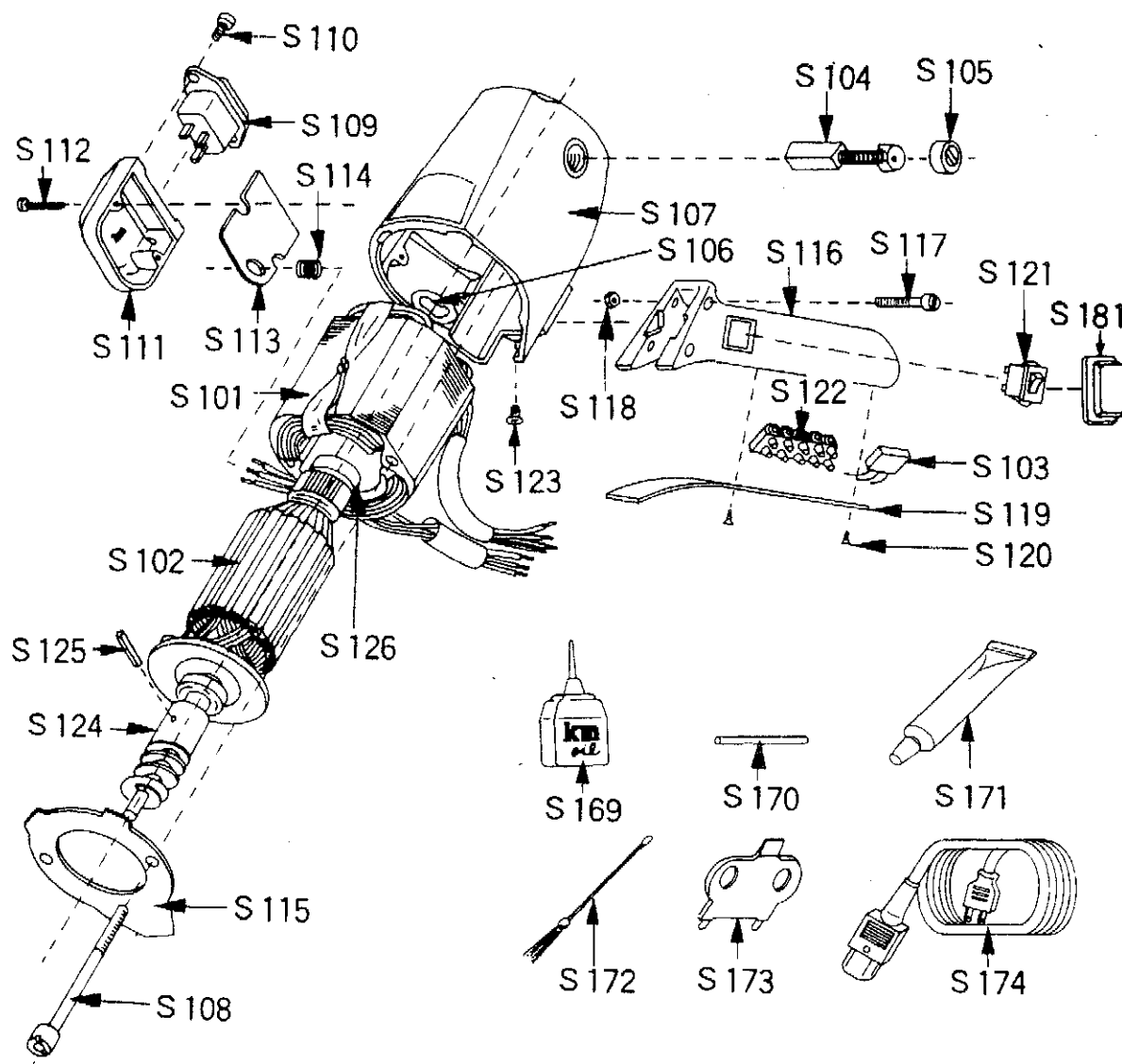


# OPERATION-LUBRICATION-CARE

## MODEL



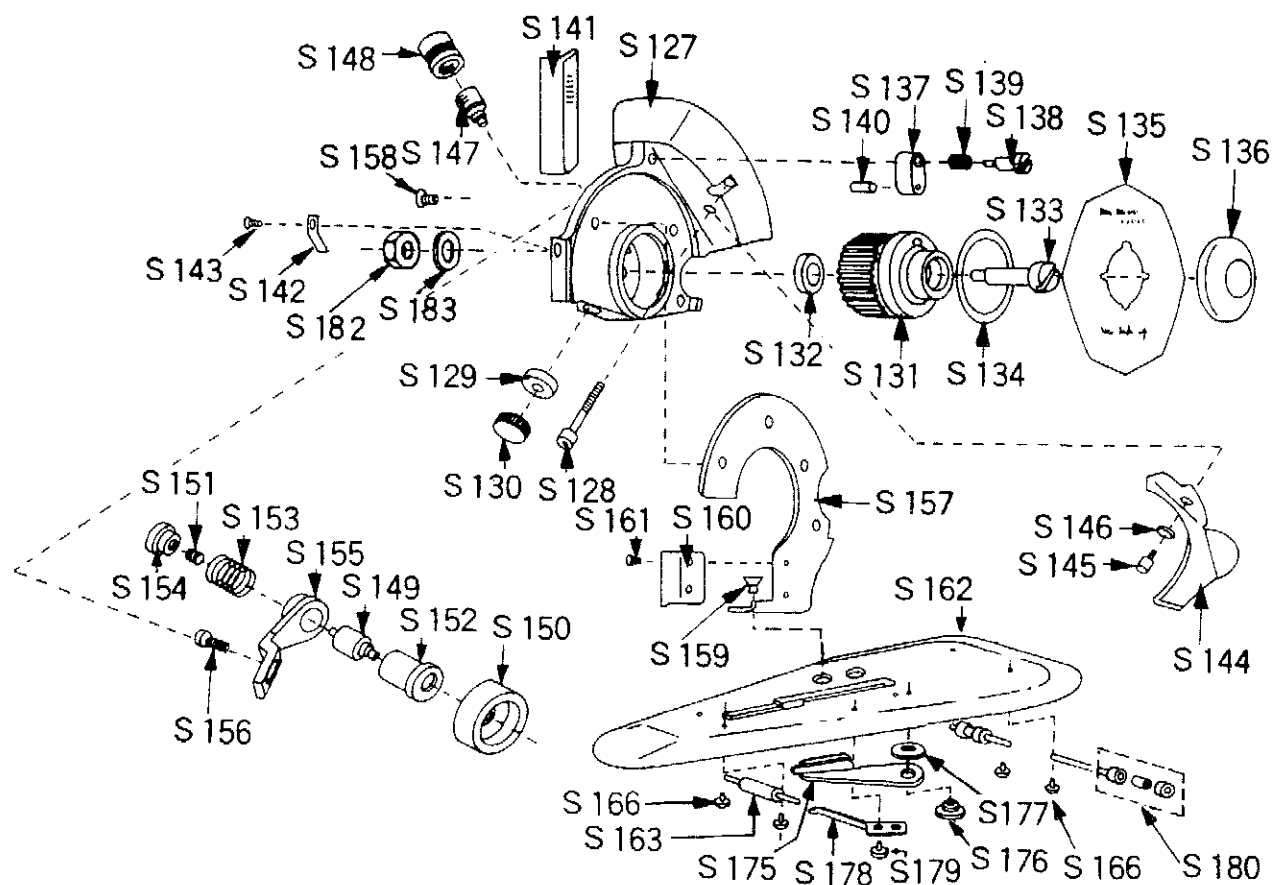
# MOTOR ASSEMBLY & ACCESSORIES



## Other standard accessories:

Knife(S135)	1 pc.
Carbon brush(S104)	1 set.
Grinding wheel(S150)	1 pc.
Knife oiler felt(S140)	1 pc.

# STANDARD & BASE ASSEMBLY



RCS → T<sub>H2</sub> & T<sub>H2</sub> #

PART NO. PART NAME

**S-101** Stator

**S-102** Rotor

**S-103** Condenser

**S-104** Carbon Brush

**S-105** Cap for Carbon Brush

**S-106** Wave Washer

PART NO. PART NAME

**S-107** Motor Cover

**S-108** Screw for Stator

**S-109** Terminal

**S-110** Screw for Terminal

**S-111** Terminal Box

**S-112** Screw for, T.Box

PART NO.	PART NAME
<b>S-113</b>	Terminal Plate
<b>S-114</b>	Rubber Bushing
<b>S-115</b>	Air Guide
<b>S-116</b>	Drive Handle
<b>S-117</b>	Screw for Handle
<b>S-118</b>	Nut for Handle
<b>S-119</b>	Cover for Handle
<b>S-120</b>	Screw for Cover
<b>S-121</b>	Switch
<b>S-122</b>	Connecting Terminal
<b>S-123</b>	Screw for Earth
<b>S-124</b>	Drive Gear
<b>S-125</b>	Roll Pin
<b>S-126</b>	Bearing
<b>S-127</b>	Gear Box
<b>S-128</b>	Screw for G.Box
<b>S-129</b>	Drive Gear Metal
<b>S-130</b>	Cover for Metal
<b>S-131</b>	Knife Gear
<b>S-132</b>	Washer for Gear
<b>S-133</b>	Screw for Gear
<b>S-134</b>	Ring for Gear
<b>S-135</b>	Knife(8-sided) *Round(option)
<b>S-136</b>	Lock Nut for Knife
<b>S-137</b>	Knife Oiler
<b>S-138</b>	Screw for Oiler
<b>S-139</b>	Spring for Oiler
<b>S-140</b>	Oil Felt
<b>S-141</b>	Knife Guard
<b>S-142</b>	Spring for Guard
<b>S-143</b>	Screw for Spring
<b>S-144</b>	Safety Plate
<b>S-145</b>	Screw for Plate
<b>S-146</b>	Spring washer for Plate
<b>S-147</b>	Grease Cup

PART NO.	PART NAME
<b>S-148</b>	Cap for Grease Cup
<b>S-149</b>	Grinder Shaft
<b>S-150</b>	Emery Wheel
<b>S-151</b>	Grinder Spring
<b>S-152</b>	Grinder Collar
<b>S-153</b>	Spring for Collar
<b>S-154</b>	Sharpening Switch
<b>S-155</b>	Grinder Arm
<b>S-156</b>	Screw for Grinder Arm
<b>S-157</b>	Standard
<b>S-158</b>	Screw for Standard (upside)
<b>S-159</b>	Screw for Standard (bottom)
<b>S-160</b>	Guide Plate
<b>S-161</b>	Screw for Guide Plate
<b>S-162</b>	Base Plate
<b>S-163</b>	Front Rlooor
<b>S-164</b>	Roller Shaft (front)
<b>S-165</b>	Roller Shaft (rear)
<b>S-166</b>	Screw for Roller shaft
<b>S-169</b>	Oiler
<b>S-170</b>	Lock Shaft
<b>S-171</b>	Grease
<b>S-172</b>	Cleaning Brush
<b>S-173</b>	Wrench
<b>S-174</b>	Code Complete with earth
<b>S-175</b>	Lower Blade
<b>S-176</b>	Screw for Lower Blade
<b>S-177</b>	Washer for Lower Blade
<b>S-178</b>	Pressure Spring for Lower Blade
<b>S-179</b>	Screw for Pressure Spring
<b>S-180</b>	Rear Roller Set
<b>S-181</b>	Switch Cap
<b>S-182</b>	Nut for Knife Gear Screw
<b>S-183</b>	Washer for Knife Gear Screw

## INSTRUCTION MANUAL

Before cutting, connect the attachment code to the machine and grind the knife edge sharp by pushing the spring loaded projection grinding switch(B)for several times.

### CHECKING(Release connecting plugs)

#### A. Greasing

1. Every 50 hours :Give small quantity grease thru grease cup and turn the cap [A] in.
2. Every 150 hours :Release cap [A] and fill the grease.

#### B. Lubrication

Every 10-20 hours :Glve oil to knife oiler [D] until oil comes in contact with the sur face of knife edge.

#### C. Adjustment of Re-Sharpener

While the grinding wheel wears. loosen stop nut of resharpener-arm[J] and rectify the resharpner position so as to the grinding wheel keeps proper contact with the knife edge.

#### D. Replacement of Grinding Wheel

\* See Grinding Wheel Replacement Guide

#### E. Replacement of Knife

1. Remove the knife guard [E] to upward direction.
2. Pull the spring loaded knife oiler [D] and turn right angle to arrow indication.
3. Remove safty plate [i] releasing lock nut [H].
4. Remove knife lock lock nut [C] by turning it left. Use the wrench attached. [If the knife also turns together with lock nut. lock the knife to the standard inseting lock shaft to hole in the knife [L]. The corresponding hole for locking knife is also provided in the standard.]
5. Remove knife.
6. Be sure the front face of the knife when re-setting the knife.  
[This Side out, nmarked face is the front face.
7. Adjust the position of re-sharpener [K] after each replacement of knife.

#### F. Replacement of Carbon Brush

1. Too much weaving of carbon brush will cause motor troubles. Carbon brush must be re-placed when it wears to 5-6mm.
2. Carbon brush cap [G] is replaced by truning it left by attached wrench.
3. Always replace right and left carbon brushes simultaneously.
4. Be sure to hold metallic part of the brush. keep fingers away from carbon.

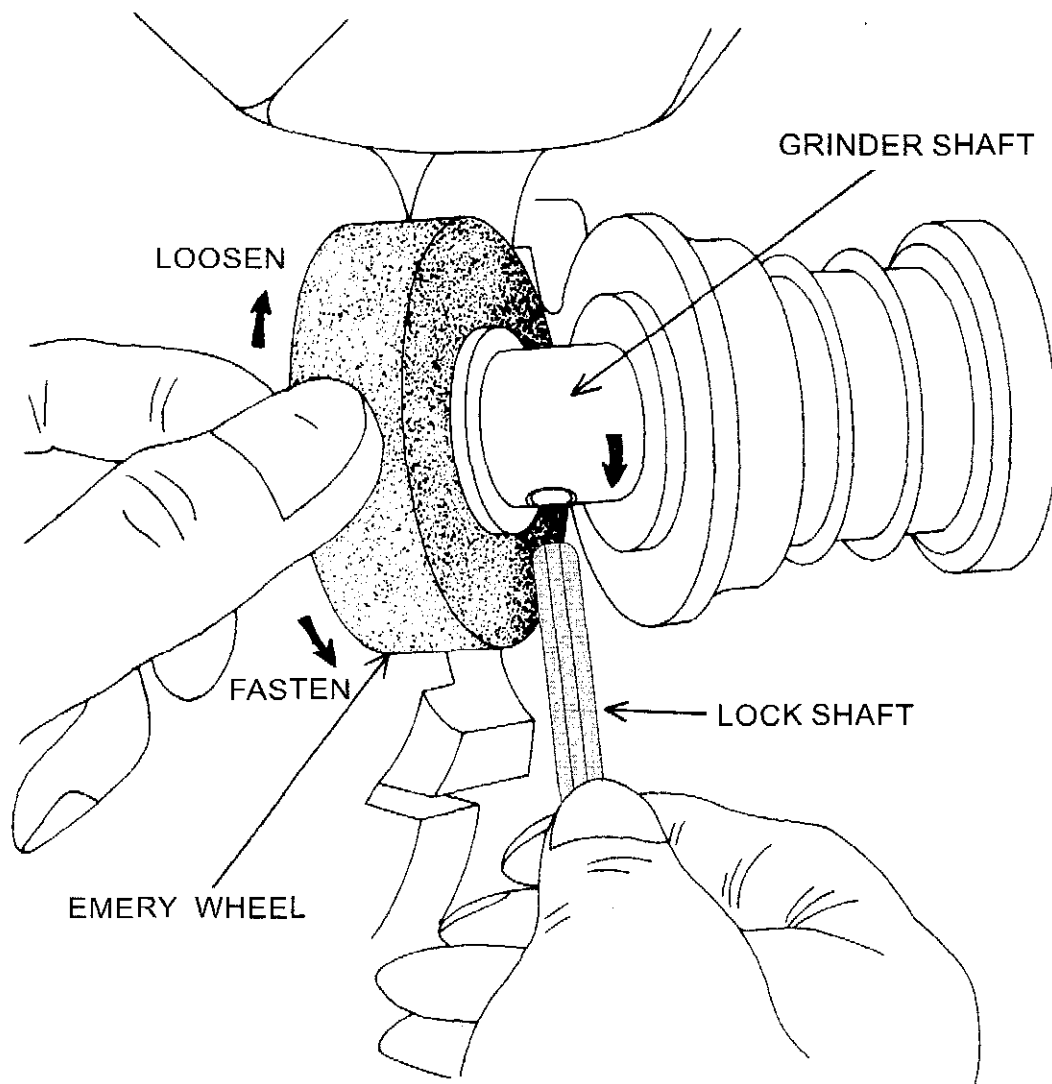
### Caution

1. For safety purpose, retain the knife guard [E] at the lowest location while the machine is not applied. Also keep the guard closest possible to the work while cutting.
2. Connect earth wire for safety.

### SPECIFICATIONS

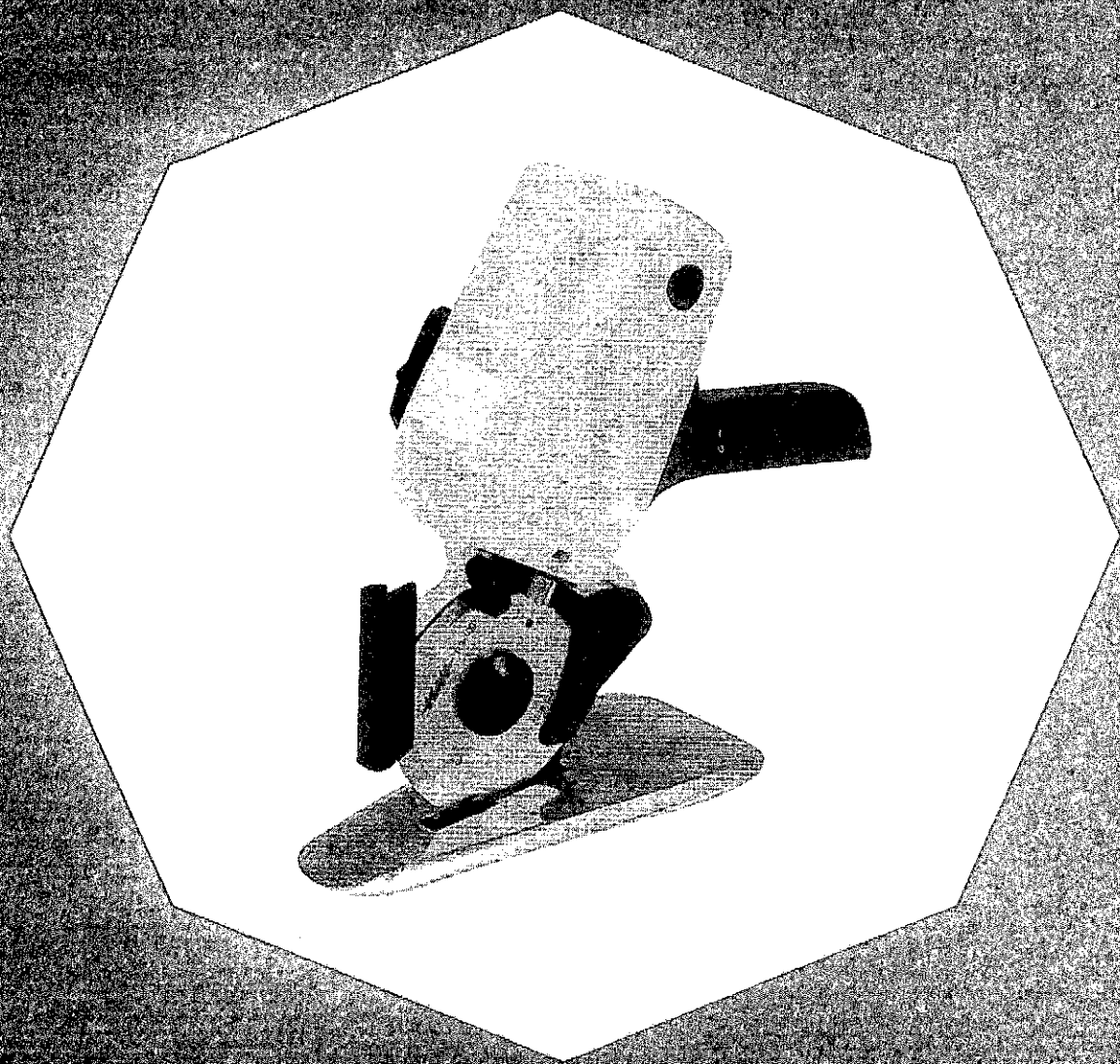
Knife Size	: 100mm
Knife Shape	: Octagon*
Cutting Capacity	: 25mm[1"]
Net Weight	: 2.9kgs
Voltage	: Single Phase 100V-120V 220V-240V
Power	: 100W

# GRINDING WHEEL REPLACEMENT GUIDE



Hold the grinding wheel by hand. Insert the attached lock shaft to the hole provided in grinder shaft and turn to arrow indication. Remove used wheel and replace with new.





From the library of: Superior Sewing Machine & Supply LLC