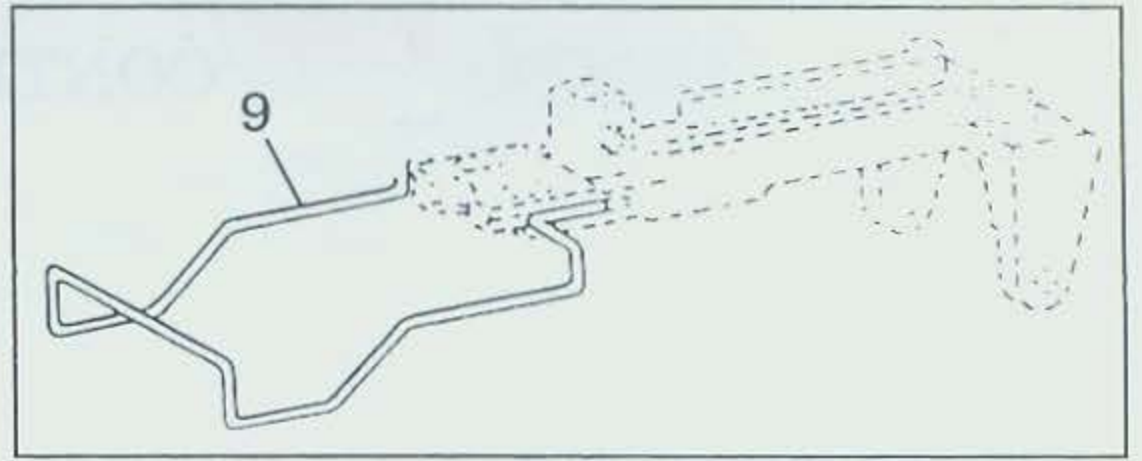
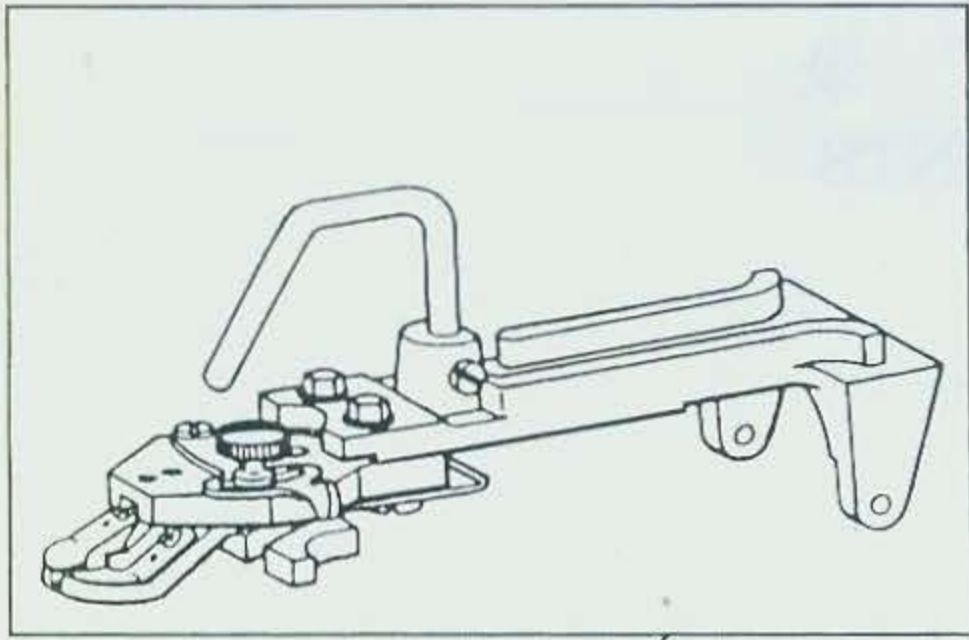
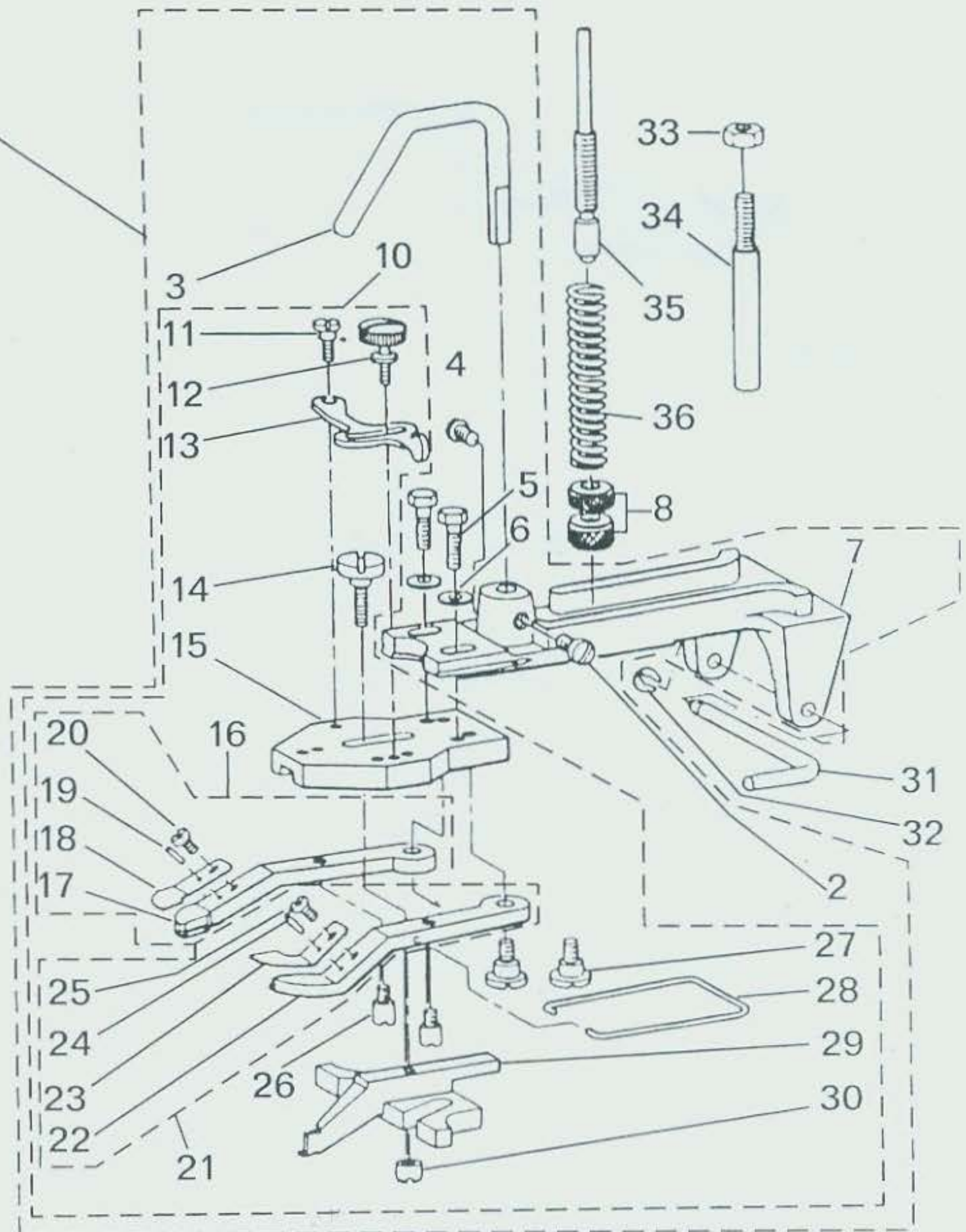


# 1. 平扣夹部分

## TUTTON CLAMP MECHANISM COMPONENTS

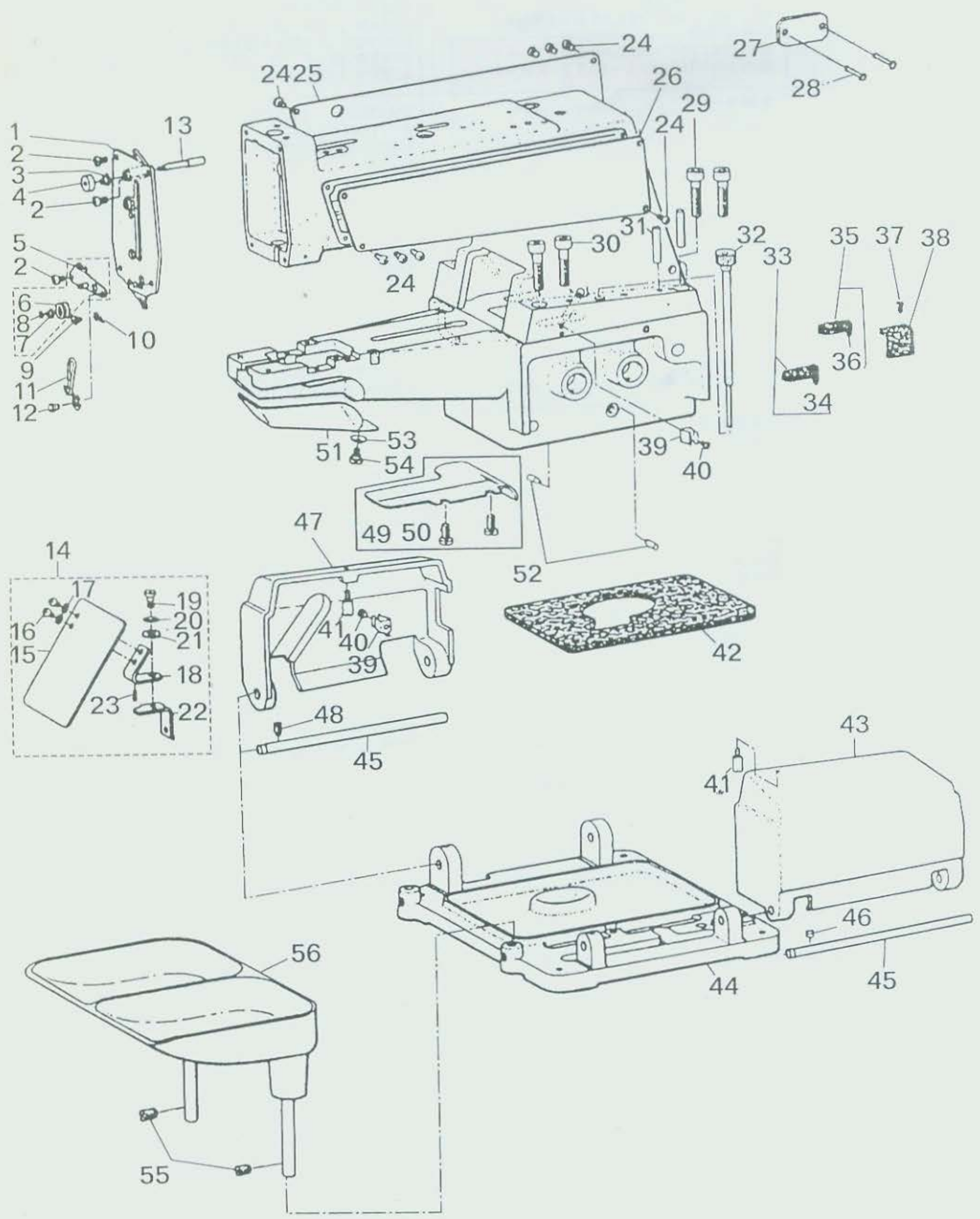


1



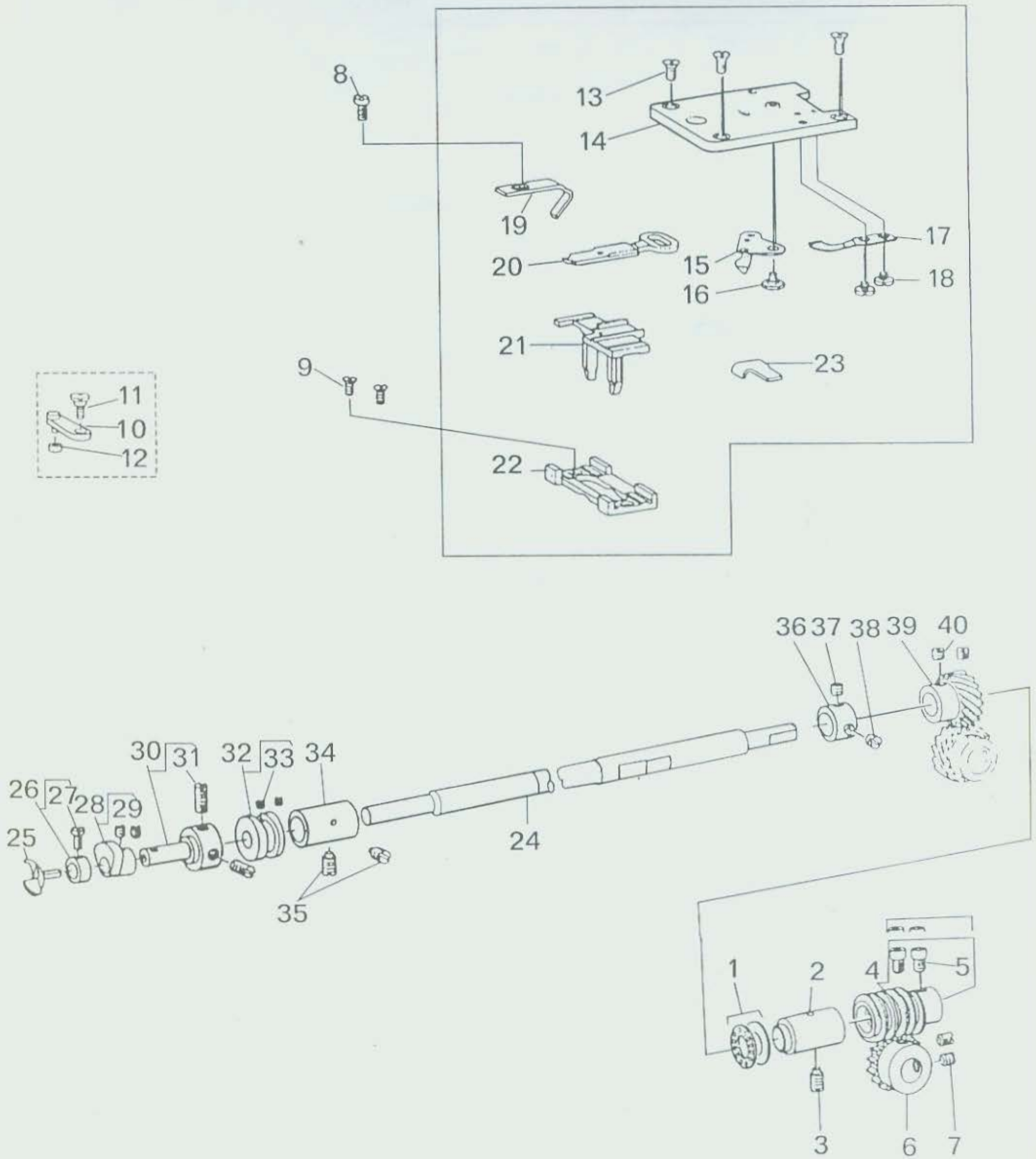
序号	代 号	零 件 名 称	Description	数量
1	1-1	平扣压脚装置组件	FLAT BUTTON CLAMP ASM	1
2	1-2	螺钉 SM15/64"×28 L=8 D=8 H=4.2	SCREW 15/64 - 28 L=8	1
3	1-3	扣夹提升钩	BUTTON CLAMP LIFTING ROD	1
4	1-4	螺钉 SM15/64"×28 L=8 D=8 H=4.2	SCREW 15/64 - 28 L=8	1
5	1-5	螺钉 SM3/16"×32 L=13.5 S=8 H=3	SCREW 3/16 - 32 L=13.5	2
6	1-6	垫圈 5	WASHER 5×10.5×1	2
7	1-7	扣夹座	BUTTON CLAMP HOLDER	1
8	1-8	扣夹压力调节螺母	THREAD TENSION NUT	2
9	1-9	护手架	FINGER GUARD	1
10	1-10	夹爪安装架组件	JAW LEVER HOLDER ASM	1
11	1-11	预开杆螺轴 D=5.50 H=1.8	HINGE SCREW D=5.50 H=1.8	1
12	1-12	预开杆紧固螺钉	CLAMP SCREW A	1
13	1-13	扣夹预开限位杆	SNAP FASTENER CLAMP STOP LEVER	1
14	1-14	滑动导向爪螺轴 D=5.5 H=3	HINGE SCREW D=5.5 H=3	1
15	1-15	扣夹爪杠杆座	JAW LEVER HOLDER	1
16	1-16	左夹爪组件	BUTTON CLAMP LEVER JAW, LEFT A	1
17	1-17	左夹爪	BUTTON CLAMP LEVER JAW (LEFT)	1
18	1-18	钮扣左弹簧压板	BUTTON HOLDING SPRING, LEFT	1
19	1-19	销 φ2.5×6	BUTTON CLAMP LOCATING PIN	1
20	1-20	螺钉 SM9/64"×40 L=3.5 D=6 H=2.5	SCREW 9/64 - 40 L=3.5	1
21	1-21	右夹爪组件	BUTTON CLAMP LEVER JAW, RIGHT	1
22	1-22	右夹爪	BUTTON CLAMP LEVER JAW RIGHT	1
23	1-23	钮扣右弹簧压板	BUTTON HOLDING SPRING, RIGHT	1
24	1-24	销 φ2.5×6	BUTTON CLAMP LOCATING PIN	1
25	1-25	螺钉 SM9/64"×40 L=3.5 D=6 H=2.5	SCREW 9/64 - 40 L=3.5	1
26	1-26	夹爪开合销	BUTTON CLAMP STOP PIN	2
27	1-27	夹爪螺轴 D=6.35 H=3.9	HINGE SCREW D=6.35 H=3.9	2
28	1-28	夹爪弹簧	BUTTON CLAMP SPRING	1
29	1-29	扣夹滑动导向爪	BUTTON CLAMP SLIDE	1
30	1-30	导向爪紧固螺母	NUT	1
31	1-31	扣夹联接销	HINGE PIN	1
32	1-32	开口挡圈 3	SNAP RING	1
33	1-33	螺母 SM1/4"×24 S=11 H=5	NUT 1/4 - 24	1
34	1-34	扣夹限位杆	BUTTON CLAMP STOPPER PIN	1
35	1-35	扣夹压力调节杆	BUTTON CLAMP PRESSURE ADJUSTING BAR	1
36	1-36	扣夹压力弹簧	PRESSURE ADJUSTING SPRING	1

2. 机壳盖板部分  
 ARM & MISCELLANEOUS COVERS COMPONENTS



序号	代 号	零 件 名 称	Description	数量
1	2-1	机壳前盖板组件	FRONT COVER ASM	1
2	2-2	螺钉 SM11/64"×40 L=8 D=7 H=2.5	SCREW 11/64 - 40 L=8	3
3	2-3	第三夹线簧	TENSION SPRING	1
4	2-4	松线杆螺母	NIPPER RELEASING PLUNGER THUMB	1
5	2-5	第三夹线器固定板组件	THREAD TENSION GUIDE NO. 3 ASM	1
6	2-6	第三夹线板	TENSION DISC	2
7	2-7	第三夹线簧	TENSION SPRING	1
8	2-8	挡圈 3	E - SHAPED SNAP RING (3MM)	1
9	2-9	螺钉 SM11/64"×40 L=3.2 D=8 H=1.5	SCREW 11/64 - 40 L=3.2	1
10	2-10	第四过线杆	THREAD GUIDE NO.4	1
11	2-11	第三过线杆	THREAD GUIDE NO.3	1
12	2-12	螺钉 SM11/64"×40 L=8 D=8 H=1.5	SCREW 11/64 - 40 L=8	1
13	2-13	松线杆	NIPPER RELEASING PLUNGER	1
14	2-14	安全板组件	SAFETY PLATE ASM	1
15	2-15	安全板	SAFETY PLATE	1
16	2-16	螺钉 SM11/64"×40 L=7 D=7 H=2.5	SCREW 11/64 - 40 L=7	2
17	2-17	垫圈 5	WASHER 4.5×10.0×0.8	2
18	2-18	安全板安装板	SAFETY PLATE INSTALLING PLATE	1
19	2-19	螺轴 D=6 H=4	HINGE SCREW D=6 H=4	1
20	2-20	安全板弹簧垫圈	DISC SPRING	1
21	2-21	垫圈 6.5×13×0.8	WASHER 6.5×13×0.8	1
22	2-22	安全板安装架	SAFETY PLATE MOUNTING BASE	1
23	2-23	销 2×6	SPRING PIN 2×6	1
24	2-24	螺钉 SM11/64"×40 L=8 D=7 H=2.5	SCREW 11/64 - 40 L=8	8
25	2-25	左面板	SIDE COVER, LEFT	1
26	2-26	右面板	SIDE COVER, RIGHT	1
27	2-27	标牌	MARK PLATE	1
28	2-28	铆钉 2×5	RIVET 2×5	2
29	2-29	螺钉 M8×30	SCREW M8 L=30	2
30	2-30	螺钉 M8×35	SCREW M8 L=35	2
31	2-31	导销	GUIDE PIN	2
32	2-32	固定螺栓组件	SET SCREW ASM	1
33	2-33	大贮油毛毡	OIL FELT ASM., LARGE	1
34	2-34	油线 3×180	OIL WICK	1
35	2-35	小贮油毛毡	OIL FELT ASM., SMALL	1
36	2-36	油线 3×80	OIL WICK	1
37	2-37	螺钉 SM11/64"×40 L=7.8 D=8 H=2.2	SCREW 11/64 - 40 L=7.8	1
38	2-38	蜗杆用毛毡	OIL SUPPLY FELT	1
39	2-39	侧面盖弹簧卡	SIDE COVER SPRING	2
40	2-40	螺钉 SM9/64"×40 L=4.5 D=6 H=2.5	SCREW 9/64 - 40 L=4.5	2
41	2-41	侧面盖弹簧轴	SCREW STUD	2
42	2-42	吸油毛毡	OIL DRIP FELT (A) 5MM	1
43	2-43	右侧盖	SIDE COVER, RIGHT	1
44	2-44	机器辅助底板	MACHING SUB - BASE	1
45	2-45	侧盖轴	SIDE COVER HINGE SHAFT	2
46	2-46	螺钉 SM15/64"×28 L=4	SCREW 15/64 - 28 L=4	1
47	2-47	左侧盖	COVER, LEFT	1
48	2-48	螺钉 SM15/64"×28 L=10.5	SCREW 15/64 - 28 L=10.5	1
49	2-49	底板防油盖	BED OIL SHIELD	1
50	2-50	螺钉 SM11/64"×40 L=7.8 D=8 H=2.2	SCREW 11/64 - 40 L=7.8	2
51	2-51	线钩盖	LOOPER COVER	1
52	2-52	送布凸轮定位指针	CAM INDICATING PIN	2
53	2-53	弹簧垫圈 6.5×14.0×17	SPRING WASHER 6.5×14.0×17	1
54	2-54	螺轴 D=6 H=2.7	HINGE SCREW D=6 H=2.7	1
55	2-55	螺钉 SM15/64"×28 L=7	SCREW 15/64 - 28 L=7	2
56	2-56	托盘组件	BUTTON TRAY ASM	1

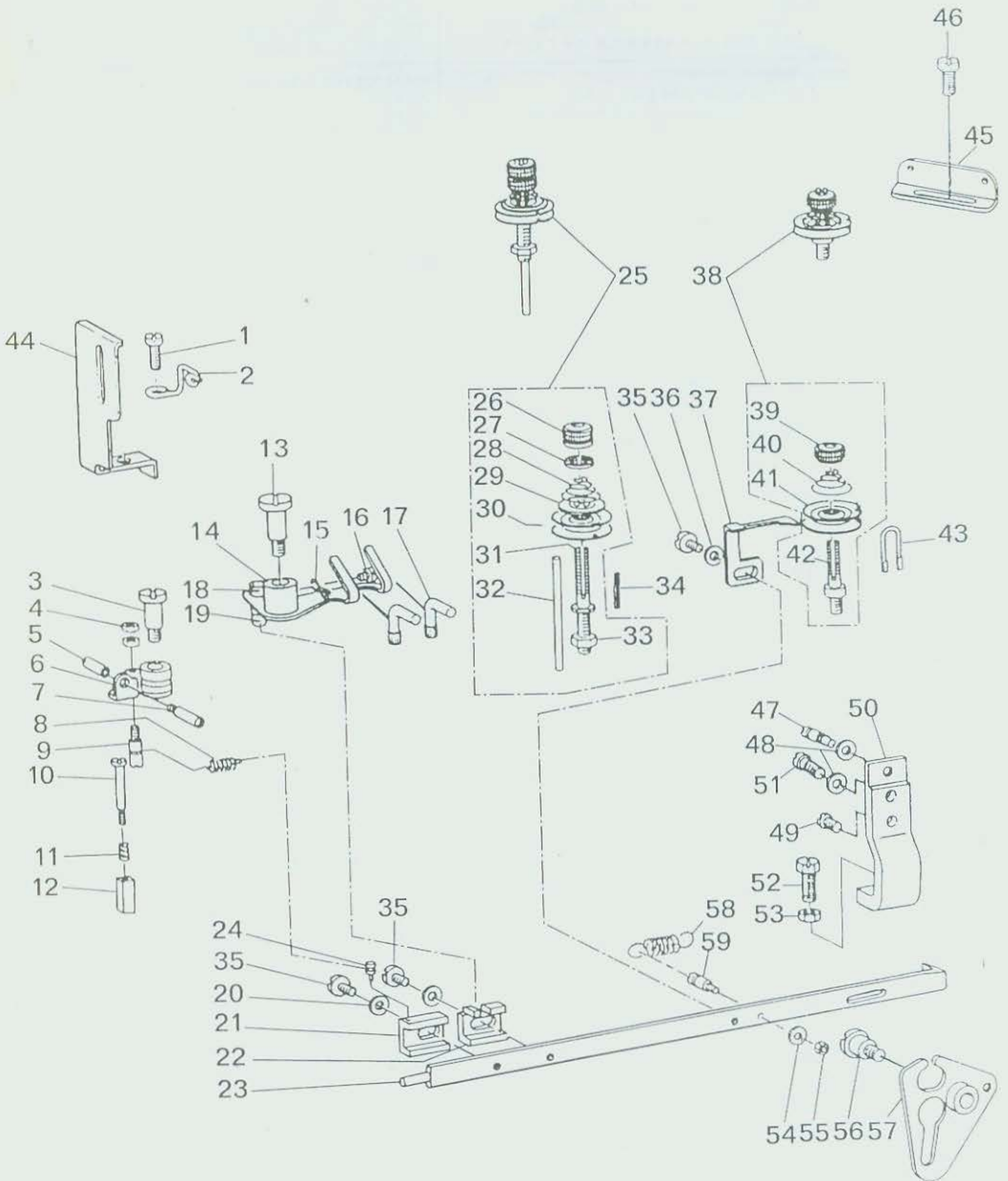
### 3. 线钩轴部分 LOOPER SHAFT MECHANISM COMPONENTS



序号	代 号	零 件 名 称	Description	数量
1	3-1	线钩轴推力球轴承	THRUST BALL BEARING	1
2	3-2	线钩轴后套	LOOPER SHAFT BUSHING, REAR	1
3	3-3	螺钉 SM15/64"×28 L=10.5	SCREW 15/64-28 L=10.5	1
4	3-4	蜗杆	DRIVEN WORM ASM	1
5	3-5	螺钉 SM1/4"×40 L=7.0 D=7 H=4	SCREW 1/4-40 L=7.0	2
6	3-6	蜗轮	CAM SHAFT DRIVEN GEAR ASM	1
7	3-7	螺钉 SM1/4"×40 L=6.0 S=3	SCREW 1/4-40 L=6.0	2
8	3-8	螺钉 SM11/64"×40 L=7 D=8 H=2.2	SCREW 11/64-40 L=7	1
9	3-9	螺钉 SM11/64"×40 L=7 D=6 H=1.7	SCREW 11/64-40 L=7	2
10	3-10	推线叉摆杆(组件)	LOOP POSITIONING FINGER LEVER	1
11	3-11	螺轴 D=6.35 H=2.4	HINGE SCREW D=6.35 H=2.4	1
12	3-12	推丝凸轮滚子	LOOP POSITIONING FINGER LEVER	1
13	3-13	螺钉 SM11/64"×40 L=8.5 D=7.4	SCREW 11/64-40 L=8.5	3
14	3-14	针板	THROAT PLATE	1
15	3-15	动剪刀	MOVING KNIFE ASM.	1
16	3-16	螺轴 D=6 H=0.85	HINGE SCREW D=6 H=0.85	1
17	3-17	固定剪刀	COUNTER KNIFE	1
18	3-18	螺钉 SM1/8"×44 L=3 D=9 H=1.5	SCREW 1/8-44 L=3.0	2
19	3-19	护针板	NEEDLE GUARD	1
20	3-20	推线叉	YOKE SLIDE	1
21	3-21	推线叉架	POSITIONING FINGER YOKE SLIDE	1
22	3-22	推线叉架滑座	YOKE SLIDE INSERT	1
23	3-23	动剪刀位置调整块	GAUGE	1
24	3-24	线钩轴	LOOPER SHAFT	1
25	3-25	线钩	LOOPER	1
26	3-26	线钩紧固圈	THRUST COLLAR ASM	1
27	3-27	螺钉 SM9/64"×40 L=6.1	SCREW 9/64-40 L=6.1	1
28	3-28	推线三角凸轮	LOOP POSITIONING FINGER CAM ASM	1
29	3-29	螺钉 SM11/64"×40 L=3.5	SCREW 11/64-40 L=3.5	2
30	3-30	凸轮及线钩安装轴	LOOPER & CAM SLEEVE	1
31	3-31	螺钉 SM15/64"×28 L=4	SCREW 15/64-28 L=4.0	2
32	3-32	推线凸轮	LOOP POSITIONING FINGER ASM	1
33	3-33	螺钉 SM11/64"×40 L=2.8	SCREW 11/64-40 L=2.8	2
34	3-34	线钩轴前套	LOOPER SHAFT BUSHING FRONT	1
35	3-35	螺钉 SM15/16"×28 L=10.5	SCREW 15/64-28 L=10.5	2
36	3-36	线钩轴挡圈 D=11.11 W=10	THRUST COLLAR ASM D=11.11 W=10	1
37	3-37	螺钉 SM1/4"×40 L=5 S=3	SCREW 1/4-40 L=5	1
38	3-38	螺钉 SM1/4"×40 L=3	SCREW 1/4-40 L=3.0	1
39	3-39	线钩轴齿轮	LOOPER SHAFT DRIVEN GEAR ASM.	1
40	3-40	螺钉 SM1/4"×40 L=6 S=3	SCREW 1/4-40 L=6.0	2

# 4. 夹线器、线钳部分

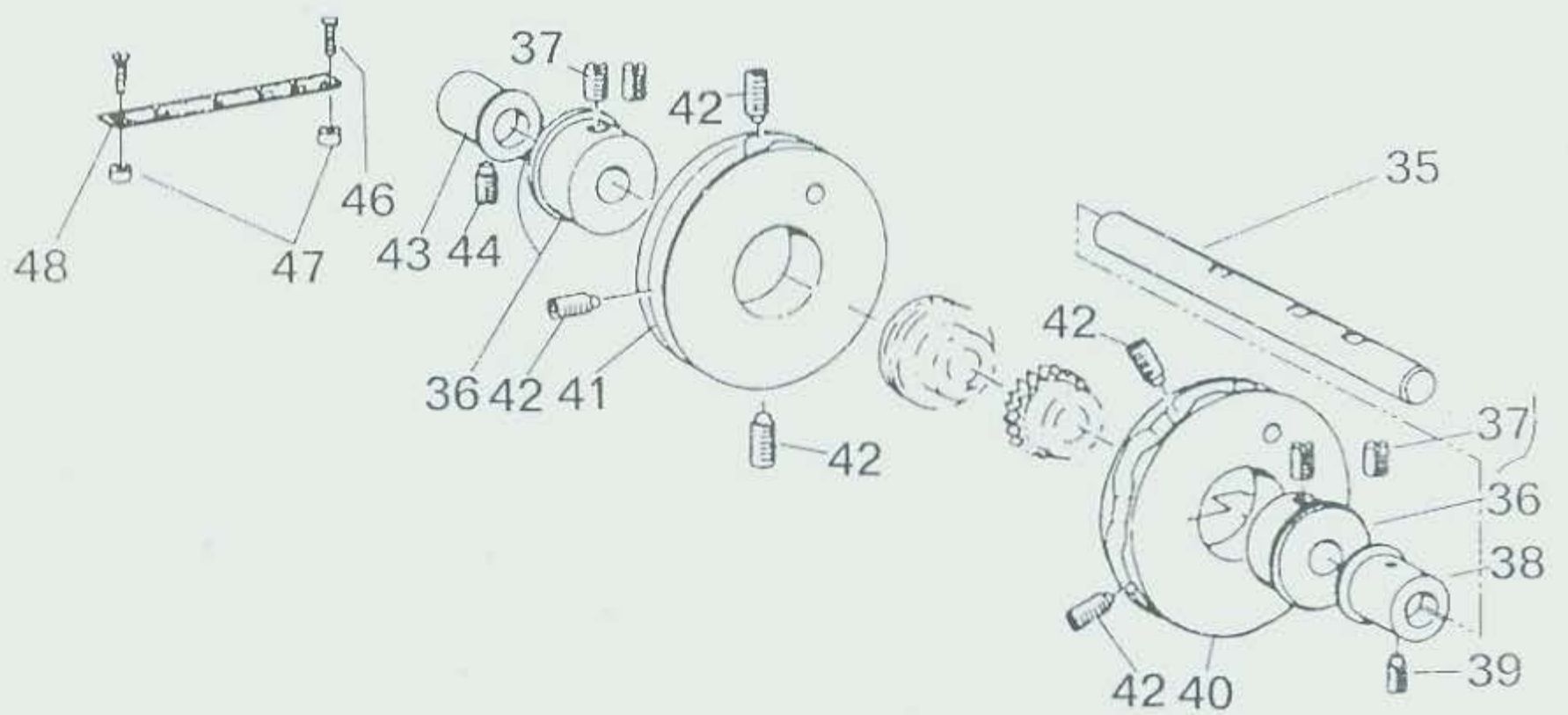
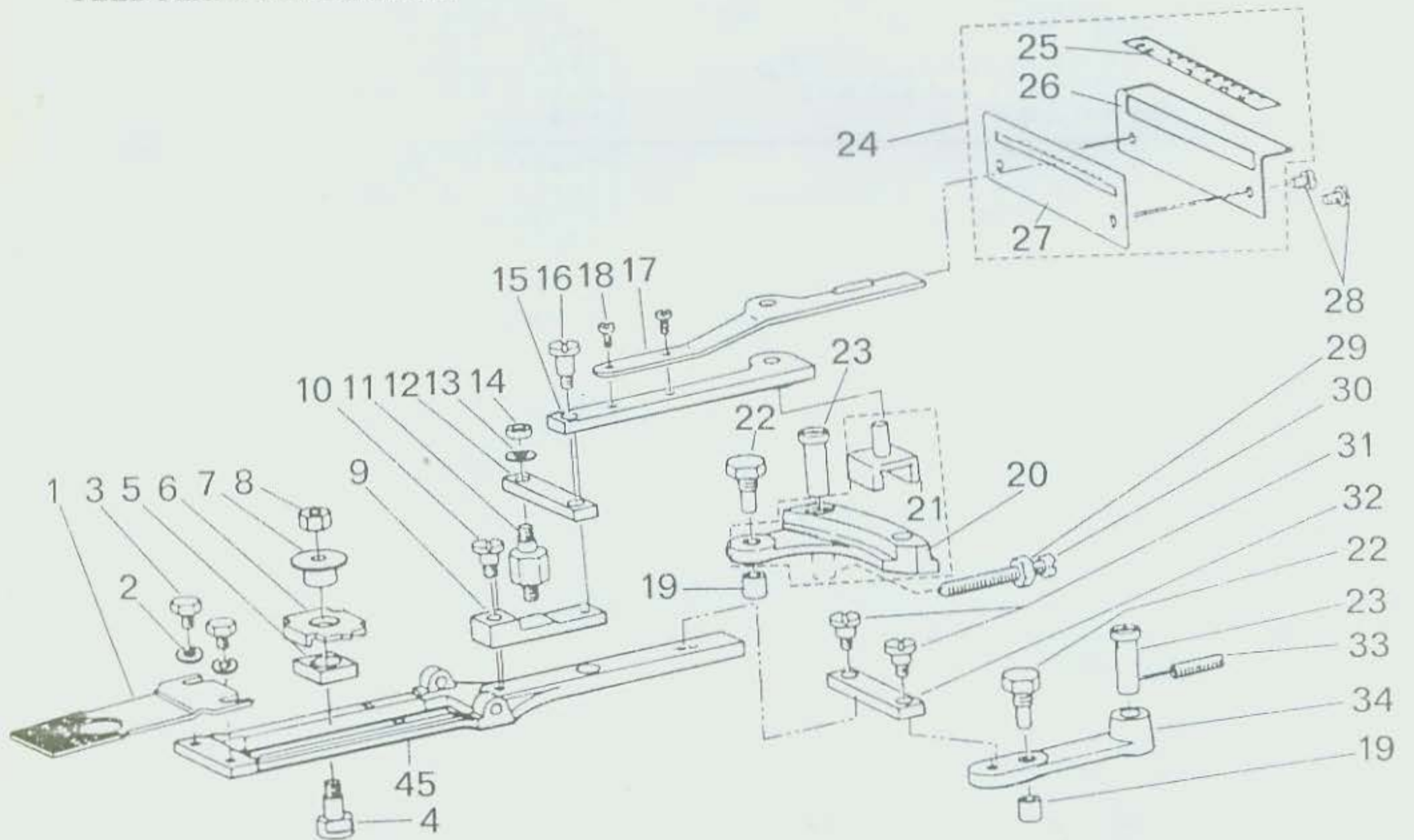
## NIPPER & THREAD TENSION PARTS COMPONENTS



序号	代 号	零 件 名 称	Description	数量
1	4-1	螺钉 SM15/64" × 28 L=12 D=10 H=3.4	SCREW 15/64-28 L=12	1
2	4-2	第二过线杆	THREAD GUIDE NO.2	1
3	4-3	螺轴 D=7.94 H=12.7	HINGE SCREW D=7.94 H=12.7	1
4	4-4	螺母 SM1/8" × 44 S=5 H=2	NUT 1/8-44	2
5	4-5	松线销螺母	NUT	1
6	4-6	线钳	THREAD NIPPER ASM	1
7	4-7	线钳松线销	THREAD RELEASING SCREW STUD	1
8	4-8	线钳拉伸弹簧	NIPPER BAR BLOCK SPRING	1
9	4-9	线钳拉伸弹簧轴	NIPPER BAR BLOCK SPRING SCREW	1
10	4-10	线钳角柱螺轴 D=4 H=20	SCREW D=4 H=20	1
11	4-11	线钳角柱弹簧	NIPPER BLOCK SPRING	1
12	4-12	线钳角柱	NIPPER BLOCK	1
13	4-13	螺轴 D=7.94 H=15.0	HINGE SCREW D=7.96 H=15.0	1
14	4-14	拨线板	THREAD PULL - OFF LEVER ASM	1
15	4-15	拨线杆过线杆	THREAD GUIDE	1
16	4-16	螺钉 SM9/64" × 40 L=4.6 D=7 H=2.5	SCREW 9/64-40 L=4.6	1
17	4-17	L 型拦线杆	L-SHAPED GUIDE	2
18	4-18	螺母 SM1/4" × 40 S=9 H=4	NUT 1/4-24	1
19	4-19	拨线板拨杆	THREAD PULL - OFF LEVER	1
20	4-20	垫圈 5	WASHER 5×10.5×1	2
21	4-21	线钳驱动块	NIPPER BAR BLOCK	1
22	4-22	拨线杆驱动块	NIPPER BAR BLOCK REAR	1
23	4-23	夹线器调节杆	NIPPER BAR	1
24	4-24	线钳拉伸弹簧销	NIPPER BAR BLOCK SPRING PIN	1
25	4-25	第二夹线器组件	TENSION POST ASM	1
26	4-26	第二夹线器螺母	TENSION NUT	1
27	4-27	夹线器防松盘	ROTATING STOPPER	1
28	4-28	第二夹线器弹簧	THREAD TENSION SPRUNG	1
29	4-29	松线板	THNSION DISC HOLDER	1
30	4-30	夹线板	TENSION DISC	2
31	4-31	第二夹线杆	TENSION POST NO.2	1
32	4-32	夹线板松线杆	TENSION RELEASE PIN	1
33	4-33	螺母 SM1/4" × 24 S=11 H=5	NUT 1/4-24	1
34	4-34	销 2×16	SPRING PIN	1
35	4-35	螺钉 SM3/16" × 28 L=9	SCREW 3/16-28 L=9.0	3
36	4-36	垫圈 5	WASHER 5×10.5×1	1
37	4-37	夹线板浮动板	THREAD TENSION RELEASING LEVER	1
38	4-38	第一夹线器组件	THREAD TENSION ASM	1
39	4-39	第一夹线器螺母	THREAD TENSION NUT	1
40	4-40	第一夹线器弹簧	TENSION SPRING NO.1.	1
41	4-41	夹线板	TENSION DISC	2
42	4-42	第一夹线杆	THREAD TENSION STAFF NO.1	1
43	4-43	第一夹线板定位杆	THREAD GUIDE	1
44	4-44	针杆护板	NEEDLE BAR GUARD	1
45	4-45	第一过线板	THREAD GUIDE NO.1	1
46	4-46	螺钉 SM15/64" × 28 L=12 D=10 H=3.4	SCREW 15/64-28 L=12	1
47	4-47	调节杆导向轴	ADJUSTING SCREW	1
48	4-48	垫圈 4.8×8.4×0.8	WASHER 4.8×8.4×0.8	2
49	4-49	螺钉 SM3/16" × 28 L=9.5 D=7 H=3.4	SCREW 3/64-28 L=9.5	1
50	4-50	调节杆导向架	NIPPRE BAR BEARING BLOCK	1
51	4-51	螺钉 SM3/16" × 28 L=15.5 D=7 H=3.4	SCREW 3/16-28 L=15.5	1
52	4-52	螺栓 SM15/64" × 28 L=14 S=9	BOLT 15/64-28 L=14	1
53	4-53	螺母 SM15/64" × 28 S=9 H=3	NUT 15/64-28	1
54	4-54	垫圈 4	WASHER 3.7×8×1	1
55	4-55	螺母 SM1/8" × 44 S=5 H=3	NUT 1/8-44	1
56	4-56	螺轴 D=7.94 H=8	HINGE SCREW D=7.94 H=8.0	1
57	4-57	调节杆推板	NIPPER BAR ACTUATING LEVER ASM	1
58	4-58	调节杆拉伸弹簧	THREAD TENSION SPRING	1
59	4-59	拉伸弹簧紧固螺钉	NIPPRE BAR SPRING SCREW	1

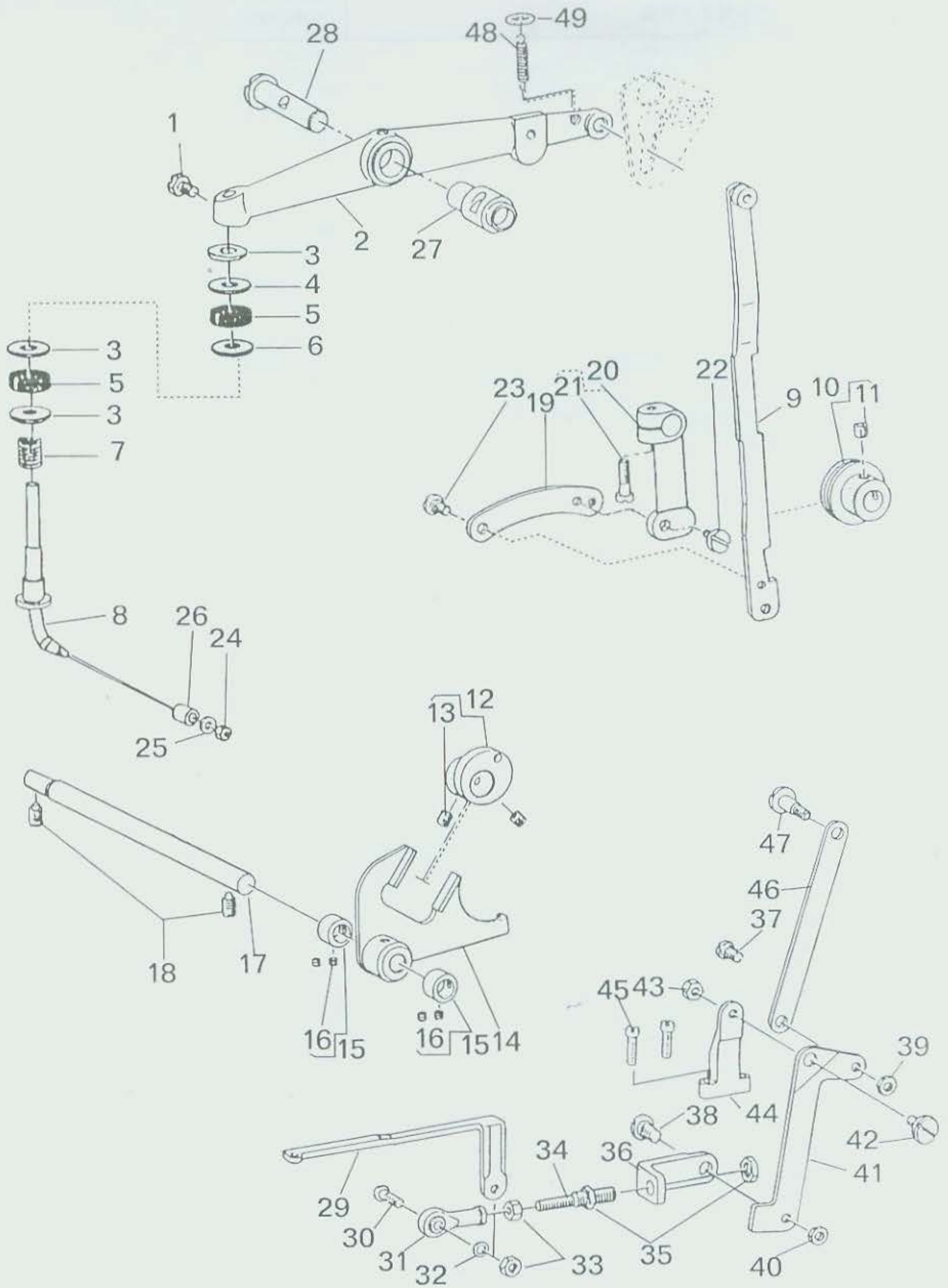
# 5. 送布机构部分

## FEED PLATE COMPONENTS



序号	代 号	零 件 名 称	Description	数量
1	5-1	小扣压脚底板	FEED PLATE, SMALL BUTTON	1
2	5-2	垫圈 5	WASHER 5×10.5×1	2
3	5-3	螺栓 SM3/16"×28 L=6 S=10 H=3.5	SCREW 3/16 - 28 L=6	2
4	5-4	螺轴	HINGE SCREW FOR CROSSWISE FEED	1
5	5-5	横送布滑块	INDICATOR PIN BEARING BLOCK	1
6	5-6	横送布指针	CROSSWISE FEED INDICATOR	1
7	5-7	送布指针滑套轴	CROSSWISE FEED INDICATOR PIN	1
8	5-8	螺母 SM 1/4"×24 S=11 H=5	NUT 1/4 - 24	1
9	5-9	送布联接连杆	SLIDE PLATE CONNECTING LINK A	1
10	5-10	螺轴 D=6.35 H=4.8	HINGE SCREW D=6.35 H=4.8	1
11	5-11	送布杆六角轴	STUD	1
12	5-12	送布连杆	INTERMEDI CONNECTING LINK	1
13	5-13	垫圈 5	WASHER 5×10.5×1	1
14	5-14	螺母 SM3/16"×28 S=7 H=3.3	NUT 3/16 - 28	1
15	5-15	纵针距调节杆底板	INDICATOR SPRING CONNECTING LINK	1
16	5-16	螺轴 D=6.35 H=9.6	HINGE SCREW D=6.35 H=9.6	1
17	5-17	纵针距调节杆	HANDLE & INDICATOR SPRING	1
18	5-18	螺钉 SM9/64"×40 L=6.0 D=7 H=2.5	SCREW 9/64 - 40 L=6	2
19	5-19	送布凸轮滚子	CAM ROLL	2
20	5-20	纵向送布杆	LENGTHWISE FEED LEVER	1
21	5-21	纵送布调节滑块	LENGTHWISE FEED LEVER SLIDE BLOCK	1
22	5-22	送布凸轮滚子轴	CAM ROLL SCREW STUD	2
23	5-23	送布轴	FEED STUD	2
24	5-24	纵针距刻度盘组件	LENGTHWISE FEED SCALE ASM	1
25	5-25	纵针距刻度板	LENGTHWISE FEED GRADUATE PLATE	1
26	5-26	纵针距刻度盘支架	PLATE BASE	1
27	5-27	纵针距限位器	FEED REGULATOR LEVER STOPPER	1
28	5-28	螺钉 SM3/16"×28 L=6 D=8 H=3.2	SCREW 3/16 - 28 L=6	2
29	5-29	螺母 SM15/64"×28 S=10 H=5	NUT 15/64 - 28	1
30	5-30	螺钉	SET SCREW	1
31	5-31	螺轴 D=6.35 H=4.8	HINGE SCREW D=6.35 H=4.8	2
32	5-32	送布连杆	INTERMEDI CONNECTING LINK	1
33	5-33	螺钉 SM15/64"×28 L=20	SCREW 15/64 - 28 L=20	1
34	5-34	横向送布杆	CROSSWISE FEED LEVER	1
35	5-35	凸轮轴	CAM SHAFT	1
36	5-36	送布凸轮衬套	CAM BOSS	2
37	5-37	螺钉 SM9/32"×28 L=8	SCREW 9/32 - 28 L=8.0	4
38	5-38	凸轮轴右套	CAM SHAFT BUSHING, RIGHT	1
39	5-39	螺钉 SM15/64"×28 L=10.5	SCREW 15/64 - 28 L=10.5	1
40	5-40	横向送布凸轮	CROSSWISE FEED CAM	1
41	5-41	纵向送布凸轮	LENGTHWISE FEED CAM	1
42	5-42	螺钉 SM9/32"×28 L=13.5 S=3	SCREW 9/32 - 28 L=13.5	5
43	5-43	凸轮轴左套	CAM SHAFT BUSHING, LEFT	1
44	5-44	螺钉 SM15/64"×28 L=10.5	SCREW 15/64 - 28 L=10.5	1
45	5-45	送布底架	FEED PLATE	1
46	5-46	螺钉 SM3/32"×56 L=10 D=3.8 H=1.5	SCREW 3/32 - 56 L=10	2
47	5-47	横针距刻度板底座	CROSSWISE FEED GRADUATED PLATE	2
48	5-48	横针距刻度板	CROSSWISE FEED GRADUATED PLATE	1

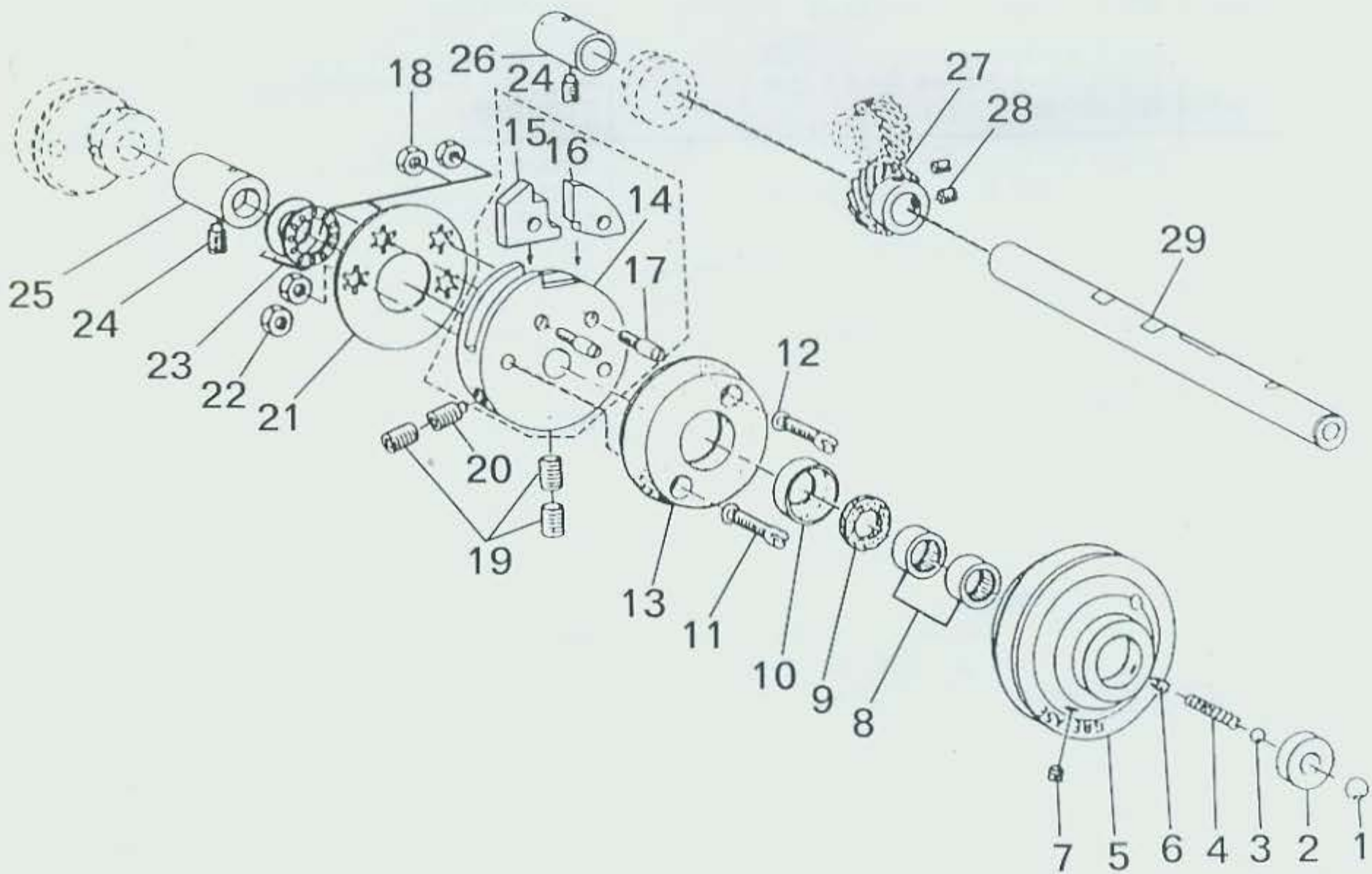
6. 提升扣夹联动机构部分  
 BUTTON CLAMP LIFTER COMPONENTS



序号	代 号	零 件 名 称	Description	数量
1	6-1	螺钉 SM15/64"×28 L=11S=9	SCREW 15/64 - 28 L=11	1
2	6-2	扣夹提升杠杆	BUTTON CLAMP LIFTING LEVER	1
3	6-3	垫圈 7.5×19×1.5	WASHER 7.5×19×1.5	4
4	6-4	调整垫(H=3.5 H=4 H=4.5 选择)	WASHER 7×20×(3.5;4;4.5)	1
5	6-5	橡胶缓冲垫	CUSHION	2
6	6-6	垫圈 8.5×22×1.8	WASHER 8.5×22.0×1.8	1
7	6-7	提升钩缓冲弹簧	SAFETY MAGNET	1
8	6-8	扣夹提升钩	BUTTON CLAMP LIFTING ROD ASM	1
9	6-9	扣夹提升拉杆	BUTTON CLAMP LIFTING LINK	1
10	6-10	拉杆导向轮	SLIDING ROLLER ASM	1
11	6-11	螺钉 SM1/4"×40 L=6 S=3	SCREW 1/4 - 40 L=6.0	1
12	6-12	扣夹提升偏心轮	ECCENTRIC CAM ASM	1
13	6-13	螺钉 SM1/4"×40 L=6 S=3	SCREW 1/4 - 40 L=6.0	2
14	6-14	扣夹提升叉形摆架	BUTTON CLAMP LIFTING LINK ASM	1
15	6-15	摆架挡圈 D=9.5 W=8	THRUST COLLAR ASM D=9.5 W=8	2
16	6-16	螺钉 SM11/64"×40 L=3.5	SCREW 11/64 - 40 L=3.5	4
17	6-17	摆架轴	LEVER SHAFT	1
18	6-18	螺钉 SM15/64"×28 L=10.5	SCREW 15/64 - 28 L=10.5	2
19	6-19	扣夹提升控制连杆	LIFTING LINK CONNECTING LINK	1
20	6-20	扣夹提升控制曲柄	LIFTING LINK;LEVER ASM	1
21	6-21	螺钉 SM3/16"×28 L=15.5 D=7 H=3.4	SCREW 3/16 - 28 L=15.5	1
22	6-22	控制曲柄螺轴 D=6.35 H=4.7	HINGE SCREW D=6.35 H=4.7	1
23	6-23	控制连杆螺轴 D=6.35 H=2.1	HINGE SCREW D=6.35 H=2.1	1
24	6-24	螺母 SM9/64"×40 S=6 H=3	NUT 9/64 - 40	1
25	6-25	垫圈 3.7×7×1	WASHER 3.7×7×1	1
26	6-26	扣夹提升滚子	BUTTON CLAMP LIFTING ROD ROLL	1
27	6-27	针杆驱动摆杆轴套	BUSHING	1
28	6-28	针杆驱动摆杆轴	BUTTON CLAMP LIFTING LEVER SHAFT	1
29	6-29	动剪前驱动板	CONNECTING LINK,FRONT	1
30	6-30	球关节螺栓	JOINT STUD	1
31	6-31	剪线球关节轴承	FEED ADJUSTING JOINT	1
32	6-32	垫圈 5.1×7.5×0.5	WASHER 5.1×7.5×0.5	1
33	6-33	螺母 M5	NUT M5	2
34	6-34	剪线球关节连接螺栓	CONNECTING SCREW	1
35	6-35	螺母 SM9/32"×28 S=11 H=3	NUT 9/32 - 28	2
36	6-36	剪线联接板	CONNECTING LINK,REAR	1
37	6-37	剪线连杆螺轴 D=6.35 H=3.2	HINGE SCREW D=6.35 H=3.2	1
38	6-38	剪线联接板螺轴 D=7.94 H=4	HINGE SCREW D=7.94 H=4	1
39	6-39	螺母 SM 3/16"×32 S=9 H=3	NUT 3/16 - 32	1
40	6-40	螺母 SM 15/64"×28 S=9 H=3	NUT 15/64 - 28	1
41	6-41	剪线杠杆	THREAD TRIMMING LEVER	1
42	6-42	剪线杠杆螺轴 D=7.94 H=3.1	HINGE SCREW D=7.94 H=3.1	1
43	6-43	螺母 SM11/64"×40 S=9 H=4.5	NUT 11/64 - 40	1
44	6-44	剪线杠杆支座	THREAD TRIM LEVER BASE	1
45	6-45	螺钉 SM11/64"×40 L=14 D=7 H=2.5	SCREW 11/64 - 40 L=14	2
46	6-46	剪线连杆	THREAD TRIMMING LINK	1
47	6-47	提升杠杆螺轴 D=6.35 H=13.2	HINGE SCREW D=6.35 H=13.2	1
48	6-48	扣夹提升杠杆拉簧	NIPPER BAR ACTUATING LEVER SPRING	1
49	6-49	拉簧挂圈	WASHER	1

# 7. 驱动轴部分

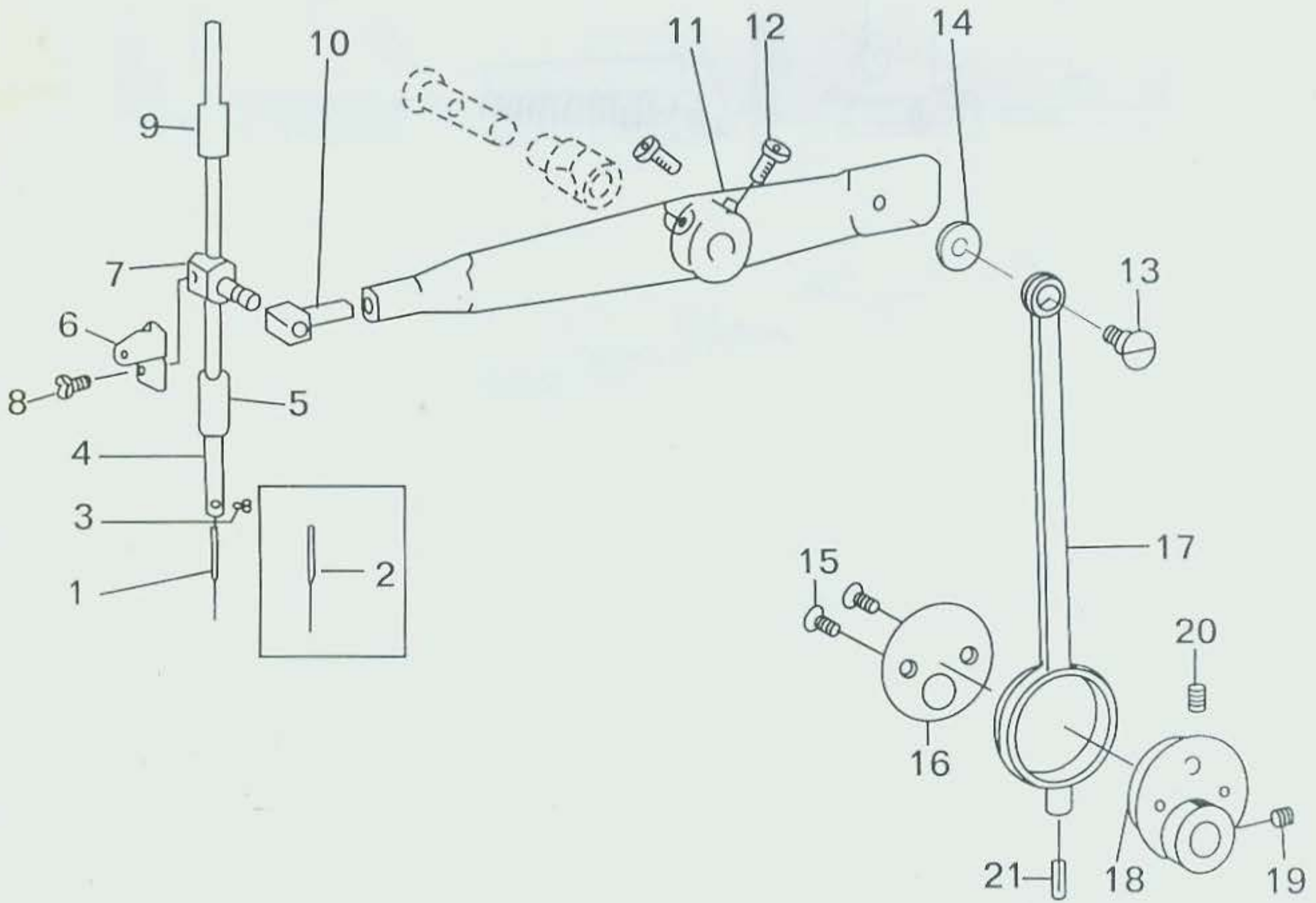
## NEEDLE BAR DRIVING MECHANISM COMPONENTS



序号	代号	零件名称	Description	数量
1	7-1	钢球 D=7.94	BALL LARGE PULLEY INSERT	1
2	7-2	起动球座	BALL SMALL	1
3	7-3	钢球 D=5.56	SPRING	1
4	7-4	驱动轴弹簧	NEEDLE DRIVING PULLEY	1
5	7-5	驱动皮带轮		1
6	7-6	螺钉 SM11/64"×40 L=6.5	SCREW 11/64 - 40 L=6.5	1
7	7-7	螺钉 SM15/64 × 28L=4	SCREW 15/64 - 28 L=4	1
8	7-8	单列向心滚针轴承	NEEDLE BEARING	2
9	7-9	挡油毛毡	GREASE RETAINING WICK	1
10	7-10	挡油毛毡盒	RETAINING WASHER	1
11	7-11	螺钉 SM15/64"×28 L=23.5	SCREW 15/64 - 28 L=23.5	2
12	7-12	垫圈 6.2×9.5×1	WASHER 6.2×9.5×1	2
13	7-13	驱动摩擦轮	NEEDLE DRIVING PULLEY CLUTCH D	1
14	7-14	停车凸轮	STOP MOTION DISC	1
15	7-15	停车爪 A	STOP MOTION DISC PAWL A	1
16	7-16	停车爪 B	STOP MOTION DISC PAWL B	1
17	7-17	螺钉轴	SCREW	2
18	7-18	螺母 SM15/64"×28 S=10 H=4	NUT 15/64 - 28	2
19	7-19	螺钉 SM5/16"×24 L=10 S=4	SCREW 5/16 - 24 L=10.0	3
20	7-20	停车凸轮定位螺钉	SCREW 5/16 - 24 L=17.0	1
21	7-21	弹簧垫圈	ECCENTRIC WASHER	1
22	7-22	螺母 SM15/64"×28 S=10 H=4	NUT 15/64 - 28	2
23	7-23	推力球轴承	THRUST BALL BEARING	1
24	7-24	螺钉 15/64"×28 L=10.5	SCREW 15/64 - 28 L=10.5	2
25	7-25	驱动轴右套	PULLEY SHAFT BUSHING, RIGHT	1
26	7-26	驱动轴左套	PULLEY SHAFT BUSHING, LEFT	1
27	7-27	螺旋齿轮 A	DRIVING GEAR ASM.	1
28	7-28	螺钉 SM1/4"×40 L=6 S=3	SCREW 1/4 - 40 L=6.0	2
29	7-29	驱动轴	NEEDLE DRIVING PULLEY SHAFT	1

# 8. 针杆部分

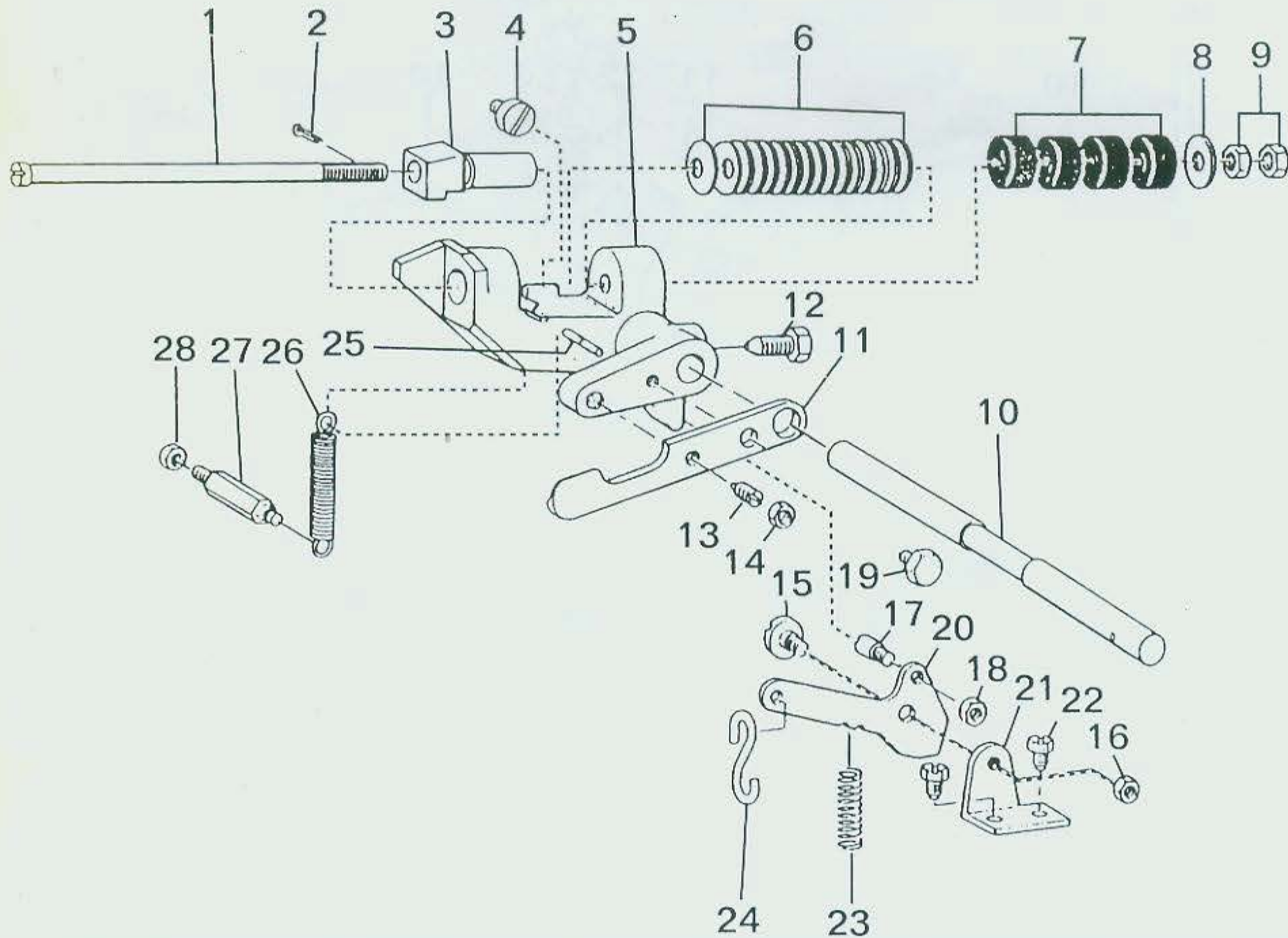
## NEEDLE BAR DRIVING MECHANISM COMPONENTS



序号	代号	零件名称	Description	数量
1	8-1	机针 TQ×7 # 16	NEEDLE TQ×7 # 16	1
2	8-2	机针 TQ×7 # 20	NEEDLE TQ×7 # 20	1
3	8-3	螺钉 SM1/8"×44 L=4.5	SCREW 1/8 - 44 L= 4.5	1
4	8-4	针杆	NEEDLE BAR	1
5	8-5	针杆下套	NEEDLE BAR BUSHING LOWER	1
6	8-6	针杆挑线杆	NEEDLE BAR BALANCE	1
7	8-7	挑线杆夹紧块	NEEDLE BAR CLAMP	1
8	8-8	螺钉 SM9/64"×40 L=8.5 D=6 H=2.5	SCREW 6/64 - 40 L=12	1
9	8-9	针杆上套	NEEDLE BAR BUSHING, UPPER	1
10	8-10	针杆滑块	NEEDLE BAR BEARING BLOCK	1
11	8-11	针杆驱动杠杆	NEEDLE BAR ROCKING PIPE	1
12	8-12	螺钉 SM15/64"×28 L=15.5 S=9	SCREW M6 L=14	2
13	8-13	铰链螺钉	HINGE SCREW D=9.53 H=8	1
14	8-14	垫圈	WASHER	1
15	8-15	螺钉 SM11/64"×40 φ L=8.5	SCREW 11/64 - 40 L=8.5	1
16	8-16	止推挡板	THRUST HOLDER	1
17	8-17	连杆	CRANK ROD	1
18	8-18	偏心凸轮	ECCENTRIC CAM	1
19	8-19	螺钉 SM1/4"×40 L=6	SCREW 1/4 - 40 L=6	1
20	8-20	螺钉 SM1/4"×40 L=8.5	SCREW 1/4 - 40 L=8.5	1
21	8-21	油芯	OIL WICK	1

# 9. 制动装置部分

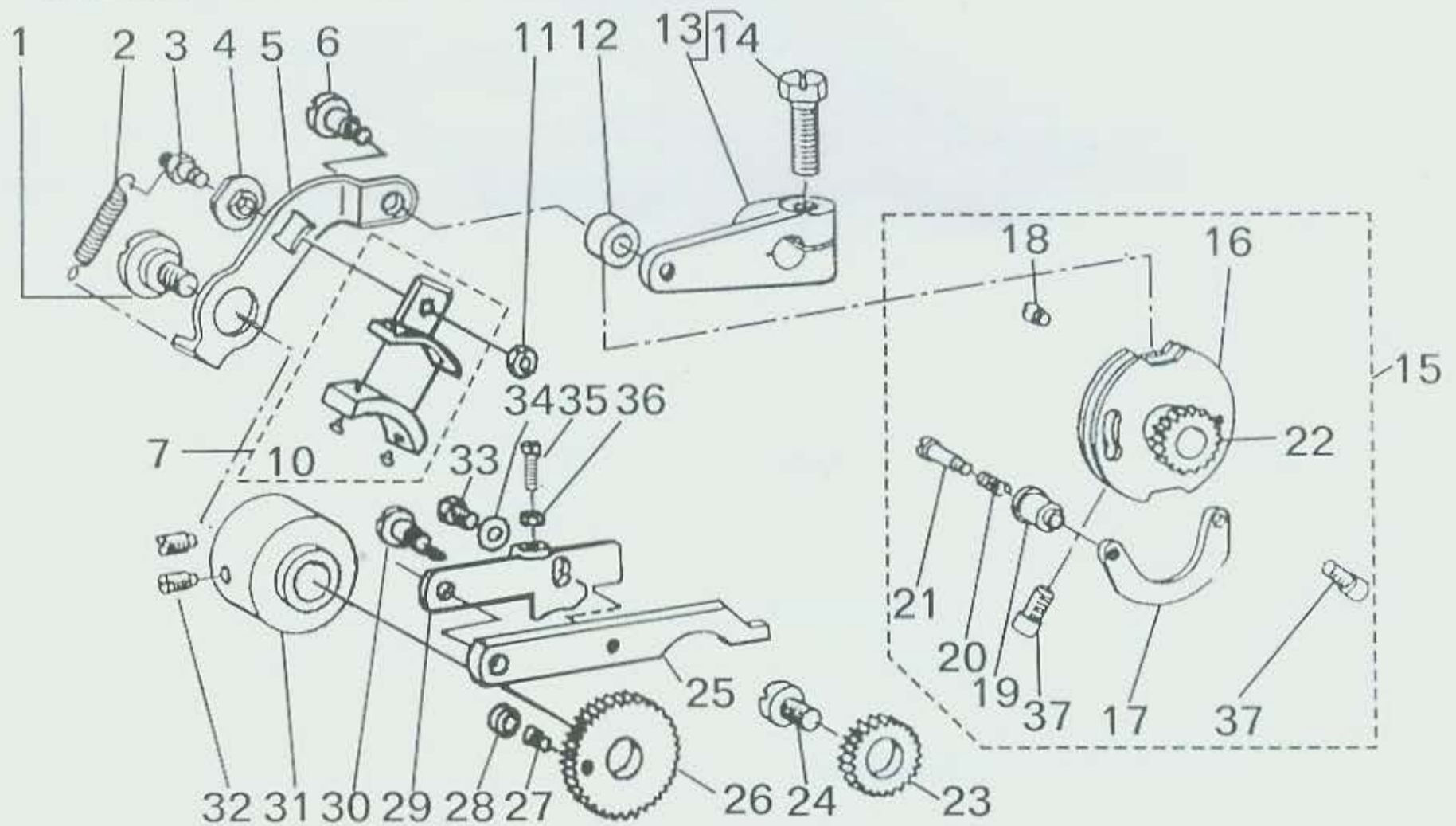
## STOP MOTION MECHANISM COMPONENTS



序号	代号	零件名称	Description	数量
1	9-1	制动缓冲杆	STOP MOTION PLUNGER ROD	1
2	9-2	销 1.8 × 10	SPLIT PIN 1.8 × 10	1
3	9-3	制动块	STOP MOTION PLUNGER	1
4	9-4	制动架限位螺钉	SCREW 15/64 - 28 L=10	1
5	9-5	制动架	STOP MOTION PLUNGER LEVER	1
6	9-6	制动碟形弹簧	STOP MOTION DISC SPRING	30
7	9-7	制动缓冲橡胶垫	RUBBER CUSHION	4
8	9-8	垫圈 8.5 × 18 × 1	WASHER	1
9	9-9	螺母 SM9/32" × 28 S=11 H=3.8	NUT 9/32 - 28	2
10	9-10	制动架轴	STOP MOTION LEVER SHAFT	1
11	9-11	带轮控制压板	STOP MOTION DISC PRESSURE LEVER	1
12	9-12	制动架紧固螺钉	SCREW	1
13	9-13	制动架压板调节螺钉	SCREW	1
14	9-14	螺母 SM15/64" × 28 S=9 H=3	NUT 15/64 - 28	1
15	9-15	螺轴 D=6.8 H=2.7	HINGE SCREW D=6.80 H=2.7	1
16	9-16	螺母 SM15/64" × 28 S=9 H=3	NUT 15/64 - 28	1
17	9-17	起动连杆销	STOP SCREW	1
18	9-18	螺母 SM15/64" × 28 S=9 H=3	NUT 15/64 - 28	1
19	9-19	螺栓 SM15/64" × 28 L=10.5	SCREW 15/64 - 28 L=10.5	1
20	9-20	起动连杆	STOP MOTION TRIP LEVER	1
21	9-21	起动连杆架	STOP MOTION TRIP LEVER BRACKET	1
22	9-22	螺钉 15/64" × 28 L=8 S=8	SCREW 15/64 - 28 L=8	2
23	9-23	起动连杆复位弹簧	SPRING	1
24	9-24	S型钩	S SHAPED HOOK	1
25	9-25	制动架挂簧销	STOP MOTION LEVER SPRING PIN	1
26	9-26	拉簧	STOP MOTION LEVER SPRING	1
27	9-27	制动架拉簧螺轴	SCREW STUD	1
28	9-289	螺母 SM15/64" × 28 S=9 H=3	NUT 15/64 - 28	1

# 10. 针数调节部分

## STITCH SELECTING PARTS COMPONENTS



序号	代号	零件名称	Description	数量
1	10-1	螺轴 D=12.7 H=3.2	HINGE SCREW D=12.70 H=3.2	1
2	10-2	摩擦板拉簧	SPRING FOR FRICTION PLATE	1
3	10-3	摩擦架挂簧轴	FRICTION PLATE ROTATING STUD	1
4	10-4	摩擦架滑块	SLIDE BLOCK	1
5	10-5	减速杆	SPEED SLOWING LEVER	1
6	10-6	螺轴 D=7.94 H=13.3	HINGE SCREW D=7.94 H=13.3	1
7	10-7	摩擦板安装架(组件)	FRICTION PLATE HOLDER ASM	1
8	10-8	摩擦板安装架	FRICTION PLATE HOLDER	1
9	10-9	减速摩擦板	SPEED SLOWING FRICTION PLATE	1
10	10-10	铆钉 1.4×6	POSITIONING PIN	2
11	10-11	螺母 SM11/64"×40 S=7 H=2.5	NUT 11/64 - 40	1
12	10-12	针数调杆凸轮滚柱	STOP MOTION TRIPPING LEVER CAM	1
13	10-13	针数调节曲柄	STOP MOTION TRIPPING LEVER ASM	1
14	10-14	螺栓 SM5/16"×18 L=22 S=14	SCREW 5/16 - 18 L=22	1
15	10-15	针数调节凸轮(组件)	STOP MOTION CAM ASM	1
16	10-16	针数调节凸轮	STOP MOTION CAM ASM	1
17	10-17	针数调节板	STOP MOTION CAM SHOE	1
18	10-18	针数调节板螺轴	SCREW FOR STOP MOTION CAM SHOE	1
19	10-19	针数调节手柄	STOP MOTION CAM KNOB	1
20	10-20	针数调节柄压簧	SPRING	1
21	10-21	螺轴 D=4.8 H=14.5	HINGE SCREW D=4.80 H=14.5	1
22	10-22	针数调节齿轮(小)	STITCH SELECTING SPUR GRAR,SMALL	1
23	10-23	针数调节齿轮(中)	STITCH SELECTING SPUR GEAR,MI	1
24	10-24	中间齿轮轴	SCREW STUD	1
25	10-25	针数调节顶板(大)	STITCH SELECTING LEVER	1
26	10-26	针数调节齿轮(大)	GEAR,LARGE	1
27	10-27	针数调节齿轮(大)螺轴	SCREW	1
28	10-28	针数调节齿轮(大)滚柱	ROLL	1
29	10-29	针数调节顶板(小)	STITCH SELECTING LATCH	1
30	10-30	螺轴 D=6.35 H=9.6	HINGE SCREW D=6.35 H=9.6	1
31	10-31	减速摩擦轮	SPEED SLOWING FRICTION WHEEL	1
32	10-32	螺钉 SM15/64"×28 L=10.5 N=1.2 Z=2	SCREW 15/64 - 28 L=10.5	2
33	10-33	螺钉 SM11/64"×40 L=9.5 S=7	SCREW 11/64 - 40 L=9.5	1
34	10-34	垫圈 5	WASHER 5×10.5×1	1
35	10-35	螺钉 SM1/8"×44 L=12 D=5.5 H=2	SCREW 1/8 - 44 L=12	1
36	10-36	螺母 SM1/8"×44 S=5 H=2	NUT 1/8 - 44	1
37	10-37	螺钉 SM15/64"×28 L=10.5 D=7 H=5.5	SCREW 15/64 - 28 L=10.5	2