



# 电子花样机 ZJ5770系列

COMPUTER-CONTROLLED PATTERN  
SEWING MACHINE WITH INPUT FUNCTION

## 零件手册 PARTS BOOK

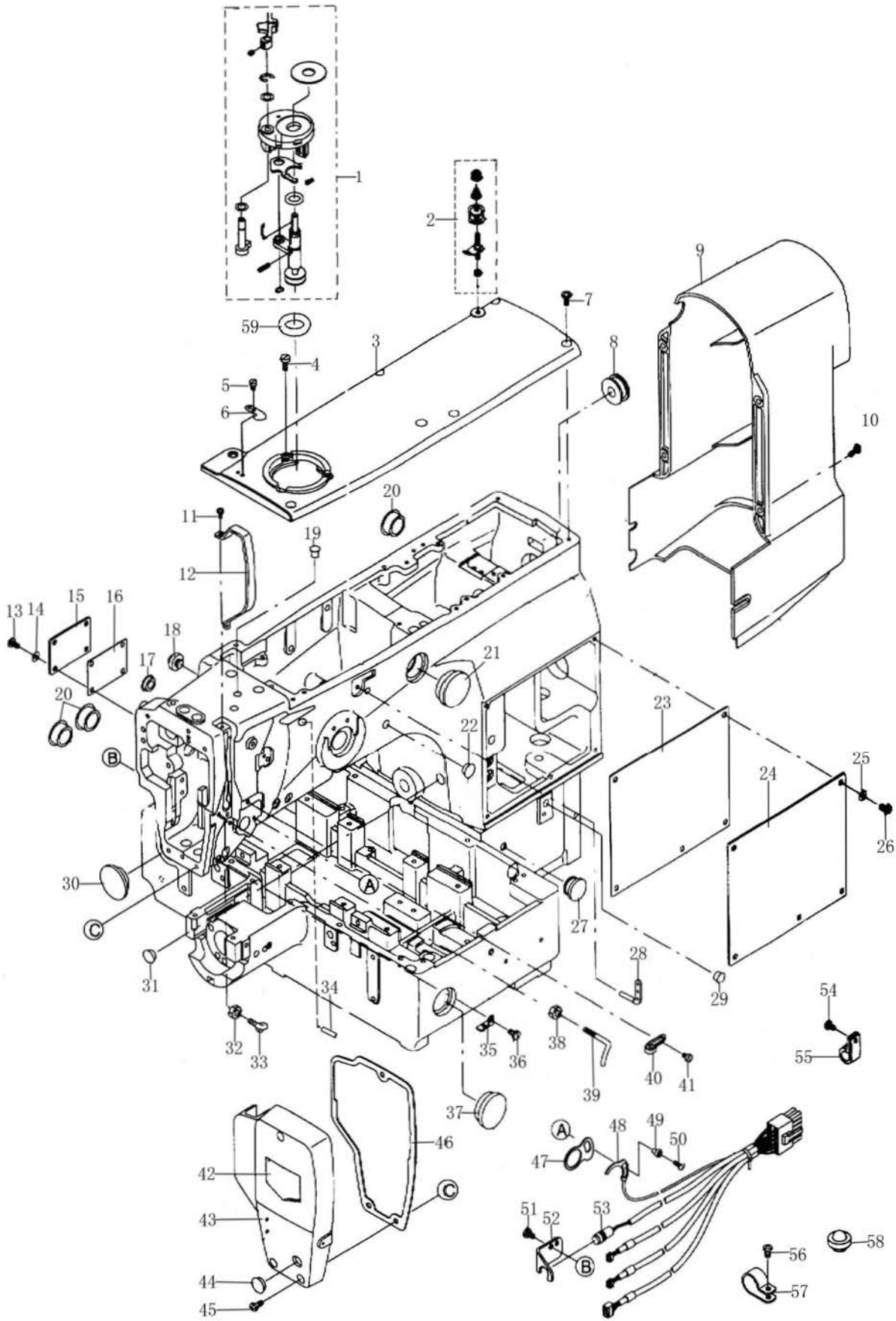
中国·中捷缝纫机股份有限公司  
ZOJE SEWING MACHINE CO., LTD.

目录  
CONTENTS

1.	机头外装部件·····	1
	RAME & MISCELLANEOUS COVER COMPONENTS	
2.	缝台部件·····	4
	SEWING SET COMPONENTS	
3.	上轴部件·····	6
	MAIM SHAFT & NEEDLE BAR COMPONENTS	
4.	拾压料板部件·····	8
	PRESSER PLATE & MANUAL PRESSER MECHANISM COMPONENTS	
5.	中压脚部件 ·····	10
	PRESSER MECHANISM COMPONENTS	
6.	下轴部件 ·····	13
	SHUTTLE DRIVER SHAFT COMPONENTS	
7.	拨线部件 ·····	15
	WIPER MECHANISM COMPONENTS	
8.	夹线松线部件 ·····	16
	TENSION RELEASE & THREAD TENSION COMPONENTS	
9.	底部剪线部件 ·····	17
	THREAD TRIMMER MECHANISM COMPONENTS	
10.	X-Y 部件(1) ·····	20
	X- Y COMPONENTS (1)	
11.	X-Y 部件(2) ·····	22
	X- Y COMPONENTS (2)	
12.	压料部件 ·····	24
	CLOTH FEED MECHANISM COMPONENTS	
13.	气动部件 ·····	33
	PNEUMATIC COMPONENTS	
14.	供油部件 ·····	36
	LUBRICATION COMPONENTS	
15.	附件部件 ·····	38
	ACCESSORIE PART COMPONENTS	

# 1. 机头、外装部件

## RAME & MISCELLANEOUS COVER COMPONENTS

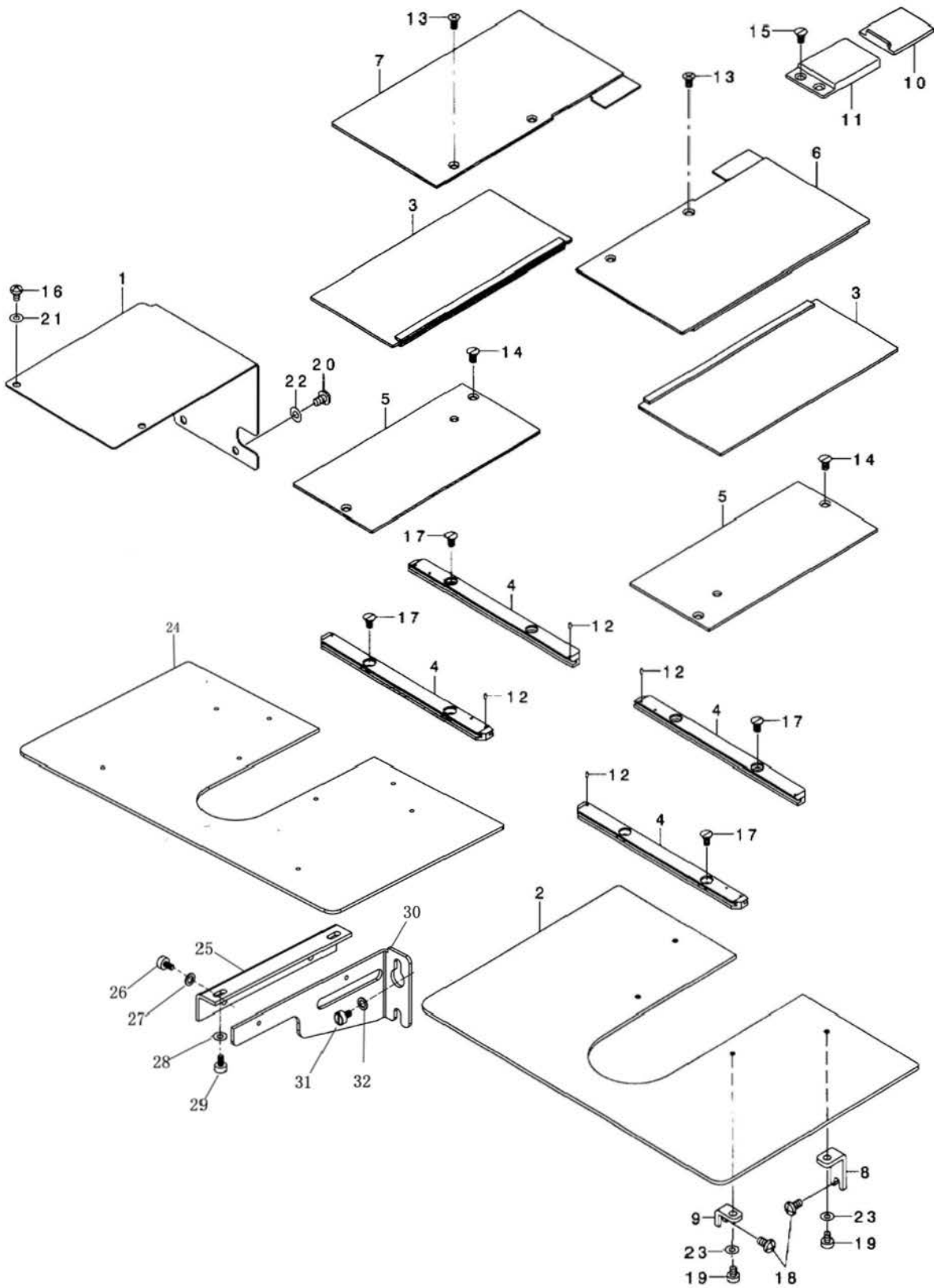


序号	物料号	名称	DESCRIPTION	数量
1	10002747	绕线器	BOBBIN WINDER ASM.	1
2	10011134	绕线夹线器	BOBBIN THREAD TENSION ASM.	1
3	20003470	上盖	TOP COVER	1
4	10011101	螺钉 11/64-40 L=11	SCREW 11/64-40 L=11	3
5	10011143	螺钉 9/64-40 L=7	SCREW 9/64-40 L=7	1
6	10011149	绕线切刀	THREAD CUTTER	1
7	10001281	螺钉 3/16-28 L=10	SCREW 3/16-28 L=10	6
8	10000187	电线橡胶套	WIRE BUSHING	1
9	10002746	后罩	MOTOR COVER	1
10	10010666	螺钉 11/64-40 L=14	SCREW 11/64-40 L=14	4
11	10011143	螺钉 9/64-40 L=7	SCREW 9/64-40 L=7	2
12	20003790	挑线杆防护罩	BALANCE COVER	1
13	10011570	螺钉 11/64-40 L=7	SCREW 11/64-40 L=7	4
14	10004670	垫片 4.5×8×0.8	WASHER 4.5×8×0.8	4
15	20003386	小盖板	COVER SMALL	1
16	10000180	小盖板垫	COVER GASKET SMALL	1
17	10011099	橡胶塞	RUBBER PLUG	1
18	10013102	机头座垫	RUBBER CUSHION	1
19	10011136	橡胶塞	RUBBER PLUG	3
20	10011146	橡胶塞	RUBBER PLUG	3
21	10011602	油窗	OIL GUIDE	1
22	10011136	橡胶塞	RUBBER PLUG	1
23	10002745	右盖板垫	SIDE PLATE GASKET	1
24	20003469	右盖板	SIDE COVER	1
25	10011440	垫片 5.1×10.2×1	WASHER 5.1×10.2×1	5
26	10001281	螺钉 3/16-28 L=10	SCREW 3/16-28 L=10	5
27	10000183	底板右侧油塞	RUBBER PLUG	1
28	10010640	三眼线钩	THREAD GUIDE	1
29	10011136	橡胶塞	RUBBER PLUG	1
30	10000184	底板正面大油塞	RUBBER PLUG	1
31	10011136	橡胶塞	RUBBER PLUG	3
32	10011140	螺母 9/64-40	NUT 9/64-40	1
33	10011148	中线钩	THREAD GUIDE	1
34	10006231	绕线过线柱	THREAD GUIDE	1
35	10011139	下线钩	THREAD GUIDE	1
36	10011150	螺钉 11/64-40 L=10	SCREW 11/64-40 L=10	1
37	10011602	油窗	OIL GUIDE	1
38	10011140	螺母 9/64-40	NUT 9/64-40	1
39	10000181	中线钩	THREAD GUIDE	1
40	10008940	右线钩	THREAD GUIDE	1

序号	物料号	名称	DESCRIPTION	数量
41	10009865	螺钉 9/64-40 L=10	SCREW 9/64-40 L=10	1
42	10005468	面板装饰牌	FACE PLATE DRESSING TABLE	1
43	20003596	面板	FACE PLATE	1
44	10011099	橡胶塞	RUBBER PLUG	1
45	10011150	螺钉 11/64-40 L=10	SCREW 11/64-40 L=10	3
46	10002579	面板垫	FACE PLATE GASKET	1
47	10000741	传感片内绝缘片	BUSHING	1
48	10000188	断线检测传感片	LINE BREAK FEELING	1
49	10000752	传感片外绝缘片	BUSHING	1
50	10009865	螺钉 9/64-40 L=10	SCREW 9/64-40 L=10	1
51	10003875	螺钉	SCREW	2
52	10002739	点动开关内盖板	STOP SWITCH INSTALLING PLATE	1
53	10008397	开关体组件	SWITCH INSTALLING ASM.	1
54	10011570	螺钉 11/64-40 L=7	SCREW 11/64-40 L=7	1
55	10005403	电线夹	CLIP	1
56	10011570	螺钉 11/64-40 L=7	SCREW 11/64-40 L=7	1
57	10005403	电线夹	CLIP	1
58	10013102	机头座垫	RUBBER CUSHION	1
59	10000757	橡胶轮	RUBBER RING	1

## 2. 縫台部件

### SEWING SET COMPONENTS

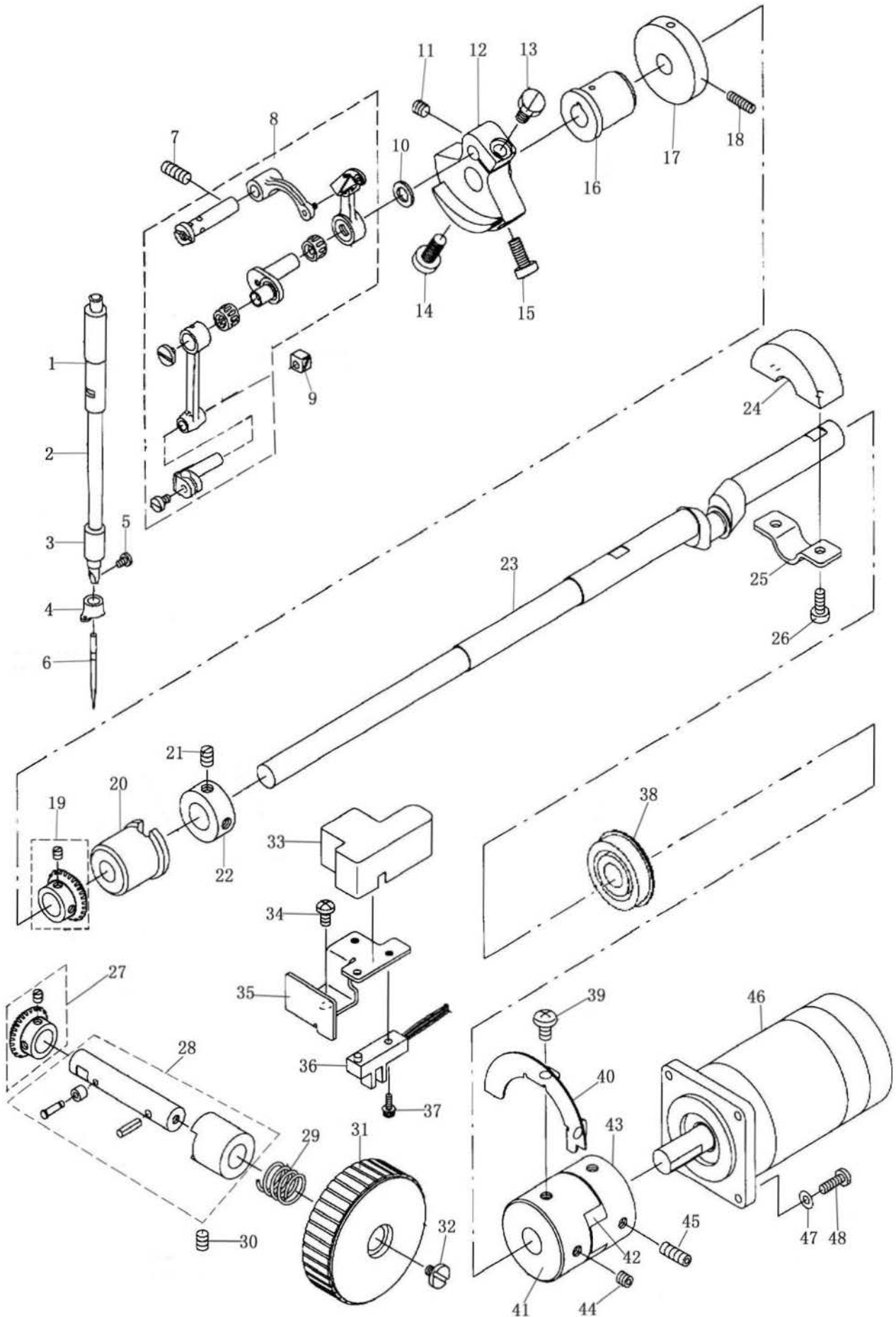


序号	物料号	名称	DESCRIPTION	数量	备注
1	20003400	底板步进电机盖板	X MOTOR COVER	1	
2	10000195	缝台	NEEDLE PLATE SUPPORT COVER	1	#01
3	10000199	X向滑移板组件	X MOVEMENT LOWER COVER ASM.	2	
4	10002387	X向滑移板导轨	X MOVEMENT COVER RAIL	4	
5	10000201	外侧盖板	FEED BASE COVER	2	
6	10002932	右上盖板组件	X MOVEMENT UPPER COVER ASM. , R	1	
7	10002933	左上盖板组件	X MOVEMENT UPPER COVER ASM. , L	1	
8	10000196	缝台固定板1	COVER SUPPORT	2	#01
9	10000197	缝台固定板2	COVER SUPPORTER	2	#01
10	10024753	Y 向滑盖	Y DRIVE COVER	1	
11	10000198	小盖板	Y FIXED COVER	1	
	10006397	小盖板	Y FIXED COVER	1	
12	10002876	弹性圆柱销 1.5×4	SPRING PIN 1.5×4	4	
13	10000202	螺钉 M4×6	SCREW M4×6	4	
14	10000101	螺钉 11/64-40 L=8	SCREW 11/64-40 L=8	4	
15	10000101	螺钉 11/64-40 L=8	SCREW 11/64-40 L=8	2	
16	10011570	螺钉 11/64-40 L=7	SCRWE 11/64-40 L=7	2	
17	10000101	螺钉 11/64-40 L=8	SCRWE 11/64-40 L=8	8	
18	10000591	螺钉 3/16-28 L=9	SCRWE 3/16-28 L=9	4	#01
19	10011142	螺钉 11/64-40 L=6	SCRWE 11/64-40 L=6	4	#01
20	10003883	螺钉 M5×10	SCRWE M5×10	2	
21	10011680	垫圈 4.6×9.7×0.8	WASHER 4.6×9.7×0.8	2	
22	10011440	垫圈 5.1×10.2×1	WASHER 5.1×10.2×1	2	
23	10006780	垫片 5.2×9.5×0.6	WASHER 5.2×9.5×0.6	4	#01
24	10006398	缝台	NEEDLE PLATE SUPPORT COVER	1	#02
25	10006396	逢台支架板	COVER BASE	2	#02
26	10000595	螺钉 11/64-40 L=9	SCRWE 11/64-40 L=9	4	#02
27	10000260	垫片 5.2×9.5×0.6	WASHER 5.2×9.8×1	4	#02
28	10006780	垫片 5.2×9.5×0.6	WASHER 5.2×9.5×0.6	4	#02
29	10011142	螺钉 11/64-40 L=6	SCRWE 11/64-40 L=6	4	#02
30	10006395	左逢台大支架	AUXILIARY COVER SUPPORT LEFT	1	#02
	10006399	右逢台大支架	AUXILIARY COVER SUPPORT RIGHT	1	#02
31	10022017	螺钉 M6×16	SCRWE M6×16	4	#02
32	10000480	垫片 6×15×1.6	WASHER 6×15×1.6	4	#02

备注：#01为5770-1306系列      #02为5770-1507系列

### 3. 上轴部件

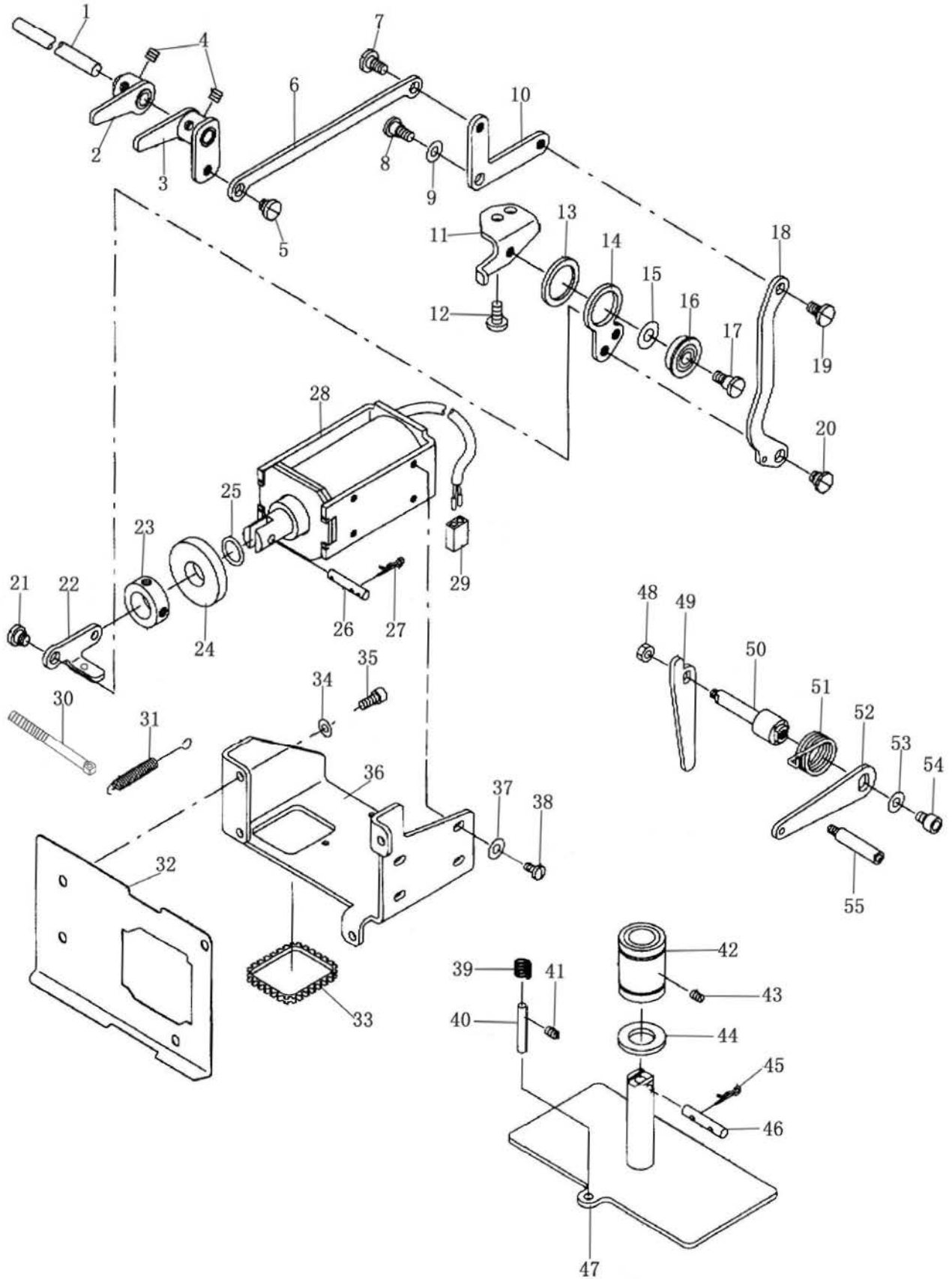
#### MAIM SHAFT & NEEDLE BAR COMPONENTS



序号	物料号	名称	DESCRIPTION	数量
1	10011601	针杆上轴套	NEEDLE ROD METAL	1
2	10000323	针杆	NEEDLE BAR	1
3	10011201	针杆下轴套	NEEDLE ROD LOWER METAL	1
4	10000237	针杆线勾	THREAD GUIDE	1
5	10010588	螺钉 1/8-44 L=4.5	SCREW 1/8-44 L=4.5	1
6	10004896	机针 DP×17 18#	NEEDLE DP×17 18#	1
7	10010678	螺钉 15/64-28 L=8	SCREW 15/64-28 L=8	1
8	10003977	挑线杆组件	THREAD_TAKE_UP_COMPL	1
9	10000061	摆针滑块	SQUARE BLOCK	1
10	10011237	垫圈 8.2×16×1	WASHER 8.2×16×1	1
11	10000881	螺钉 1/4-40 L=5.8	SCREW 1/4-40 L=5.8	1
12	10002941	针杆曲柄	COUNTER WEIGHT	1
13	10000328	螺钉 1/4-40 L=12	SCREW 1/4-40 L=12	1
14	10011239	螺钉 9/32-28 L=11	SCREW 9/32-28 L=11	1
15	10011238	螺钉 15/64-28 L=14	SCREW 15/64-28 L=14	1
16	10007743	上轴前轴套	BUSHING FRONT	1
17	10011233	绕线主动轮	BOBBIN WINDER DRIVING WHEEL	1
18	10011223	螺钉 11/64-40 L=11.5	SCREW 11/64-40 L=11.5	2
19	10021313	弧齿锥齿轮组件_上轴	WHEEL GEAR MAIN SHAFT	1
20	10000332	上轴中轴套	BUSHING INTERMEDIATE	1
21	10000881	螺钉 1/4-40 L=5.8	SCREW 1/4-40 L=5.8	2
22	10000330	上轴挡圈	THRUST COLLAR	1
23	10000324	上轴	MAIN SHAFT	1
24	10000329	上轴平衡块	CRANK BALANCER	1
25	10000326	上轴平衡块夹板	CRANK BALANCER FIX PLATE	1
26	10000512	螺钉 3/16-28 L=12	SCREW 3/16-28 L=12	2
27	10021312	弧齿锥齿轮组件_手轮轴	WHEEL GEAR PULLEY SHAFT	1
28	10001309	调节手轮轴组件	REGULATE PULLEY SHAFT ASM.	1
29	10011242	弹簧	SPRING	1
30	10010678	螺钉 15/64-28 L=8	SCREW 15/64-28 L=8	1
31	10011603	手轮	PULLEY	1
32	10011225	螺钉 M6×8	SCREW M6×8	1
33	10010671	传感器防护盖	MAIN SHAFT SENSOR COVER	1
34	10010668	螺钉 11/64-40 L=7.8	SCREW 11/64-40 L=7.8	1
35	10012225	传感器固定架	SENSOR INSTRALLING BASE	1
36	10007285	传感器	PHOTO INTERRUPTER	1
37	10011199	上轴传感器外壳螺钉组件	SCREW ASM.	1
38	10025868	轴承	BEARING	1
39	10000325	螺钉 M6×8	SCREW M6×8	2
40	10000327	上轴传感器挡光片	MAIN SHAFT SLIT PLATE	1
41	10011228	传动连接前块	COUPLING FRONT	1
42	10011227	传动连接橡胶块	COUPLING RUBBER	1
43	10011240	传动连接后块	COUPLING EMPRESS	1
44	10011232	螺钉 M6×6	SCREW M6×6	2
45	10011236	螺钉 M6×16	SCREW M6×16	2
46	10003722	主轴伺服电机	MAIN MOTOR	1
47	10004670	垫圈 4.5×8×0.8	WASHER 4.5×8×0.8	4
48	10010666	螺钉 11/64-40 L=14	SCREW 11/64-40 L=14	4

#### 4. 抬压料板部件

#### PRESSER PLATE & MANUAL PRESSER MECHANISM COMPONENTS

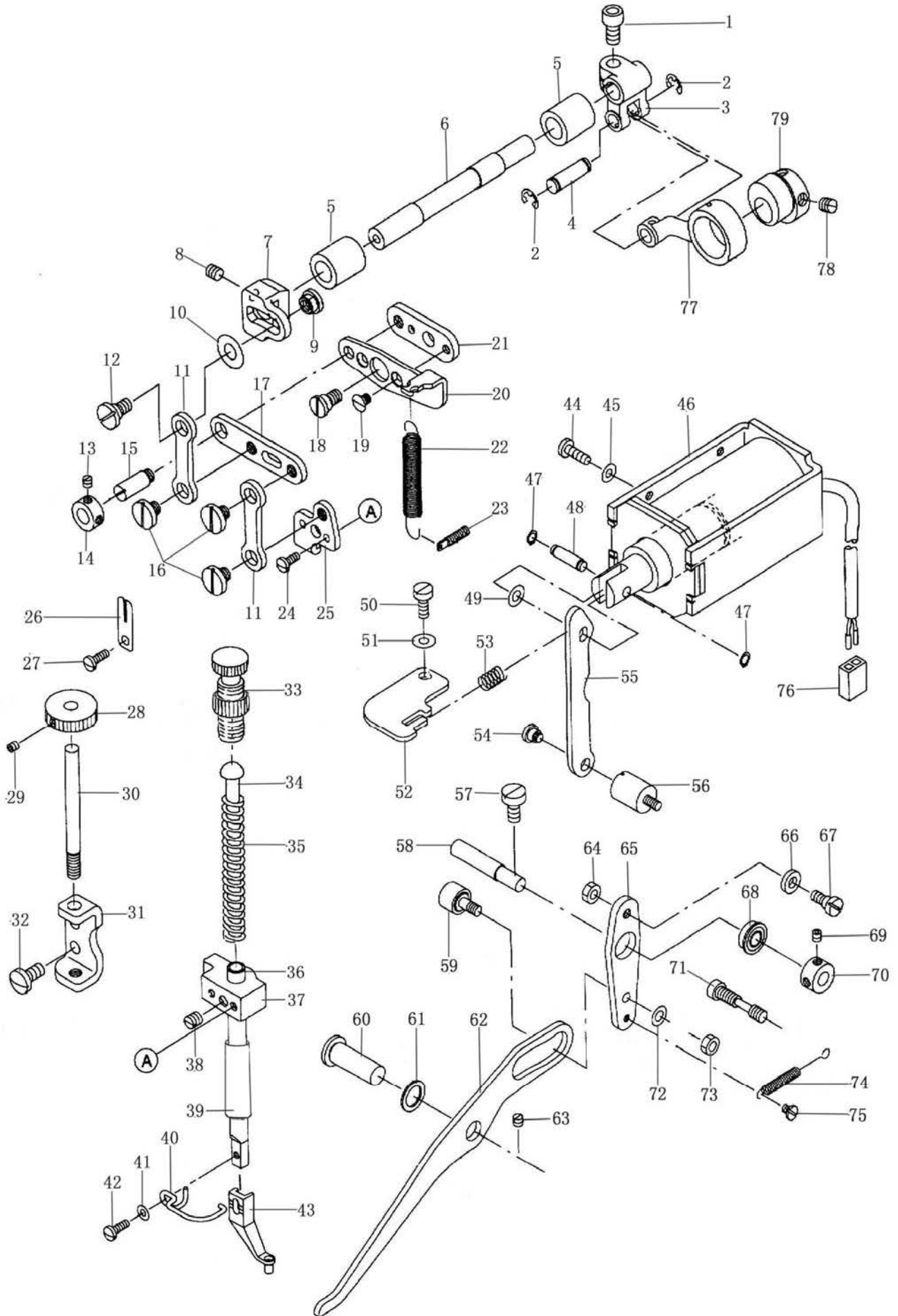


序号	物料号	名称	DESCRIPTION	数量
1	10000206	压料臂轴	LOWERING SHAFT	1
2	10004108	次压料臂组件	MAIN ARM ASM.	1
3	10003925	主压料臂组件	TIME ARM ASM.	1
4	10011232	螺钉 M6×6	SCREW M6×6	4
5	10000207	铰链螺钉 D=8 H=3.4	HINGE SCREW D=8 H=3.4	1
6	10000208	压料臂连杆	CONNECTING LING LINK	1
7	10000207	铰链螺钉 D=8 H=3.4	HINGE SCREW D=8 H=3.4	1
8	10000210	铰链螺钉 D=8 H=5	HINGE SCREW D=8 H=5	1
9	10000212	垫圈 8.5×18×1.6	WASHER 8.5×18×1.6	1
10	10000209	三角连杆	L-SHAPED LINK	1
11	10003011	压料输出板安装座	LINK GUIDE PLATE	1
12	10000215	螺钉 15/64-28 L=12	SCREW 15/64-28 L=12	2
13	10000217	压料输出板间隔垫片	PRESSER LING PARTITION WASHER	1
14	10000216	压料输出板	PRESSER LING	1
15	10003193	垫圈 6.2×12.8×1	WASHER 6.2×12.8×1	1
16	10003582	轴承	BEARING	1
17	10010674	铰链螺钉 D=7.94 H=6	HINGE SCREW D=7.94 H=6	1
18	10000213	压料曲形连杆	CONNECTING PLATE	1
19	10000207	铰链螺钉 D=8 H=3.4	HINGE SCREW D=8 H=3.4	1
20	10000214	铰链螺钉 D=8 H=4.2	HINGE SCREW D=8 H=4.2	1
21	10000214	铰链螺钉 D=8 H=4.2	HINGE SCREW D=8 H=4.2	1
22	10000624	压料输出推杆	PRESSER LING PUSH POLE	1
23	10000622	压料电磁铁芯间隔圈	THRUST COLLAR	1
24	10000623	压料电磁铁胶减振垫片	RUBBER PLUNGER	1
25	10000218	压料电磁铁减振胶环	RUBBER RING	1
26	10011243	传动销轴	MAGNET PIN SHAFT	1
27	10010665	销	PIN	2
28	10000515	拾压脚电磁铁	SOLENOID	1
29	10002453	插件件母端2芯	HOUSING	1
30	10002572	螺钉	SCREW	1
31	10002571	弹簧	SPRING	1
32	10000621	压料电磁铁挡油板	BED OIL PREVENTIONGPLATE	1
33	10004860	压料电磁铁过线套	BUSHING	1
34	10000260	垫圈 5.2×9.8×1	WASHER 5.2×9.8×1	4
35	10000259	螺钉 M5×12	SCREW M5×12	4
36	10000352	压料电磁铁固定座	MAGNET INSTALLING PLATE	1
37	10013639	垫圈 5×10.8×1.6	WASHER 5×10.8×1.6	4
38	10011101	螺钉 11/64-40 L=11	SCREW 11/64-40 L=11	4
39	10000222	压料上滑板弹簧	SPRING	1
40	10000211	压料上滑板导向轴	PRESSER SHAFT	1
41	10000205	螺钉 3/16-28 L=7	SCREW 3/16-28 L=7	1
42	10003655	轴承	BEARING	1
43	10000205	螺钉 3/16-28 L=7	SCREW 3/16-28 L=7	1
44	10000221	压料上滑板减振胶垫	RUBBER WASHER	1
45	10010665	销	PIN	2
46	10000220	压料传动销轴	MAGNET PIN SHAFT	1
47	10003924	压料上滑板组件	PRESSER PLATE SHEET ASM.	1
48	10000353	螺母 M5	NUT M5	1
49	10000350	压料板脚踏推杆	LOWERING LEVER	1
50	10000354	压料板脚踏拉杆轴	LOWERING PLATE SHAFT	1
51	10000357	脚踏拉杆复位弹簧	SPRING	1
52	10000219	压料板脚踏控制杆	LOWERING PLATE	1
53	10000356	垫圈 6.5×12.3×1.5	WASHER 6.5×12.3×1.5	1
54	10000355	螺钉 M6×8	SCREW M6×8	1
55	10000351	脚踏拉杆挡轴	OIL PUMP SUPPORT	1

备注：此部件为5770-1306HA系列，5770-1507HA系列

# 5. 中压脚部件

## PRESSER MECHANISM COMPONENTS

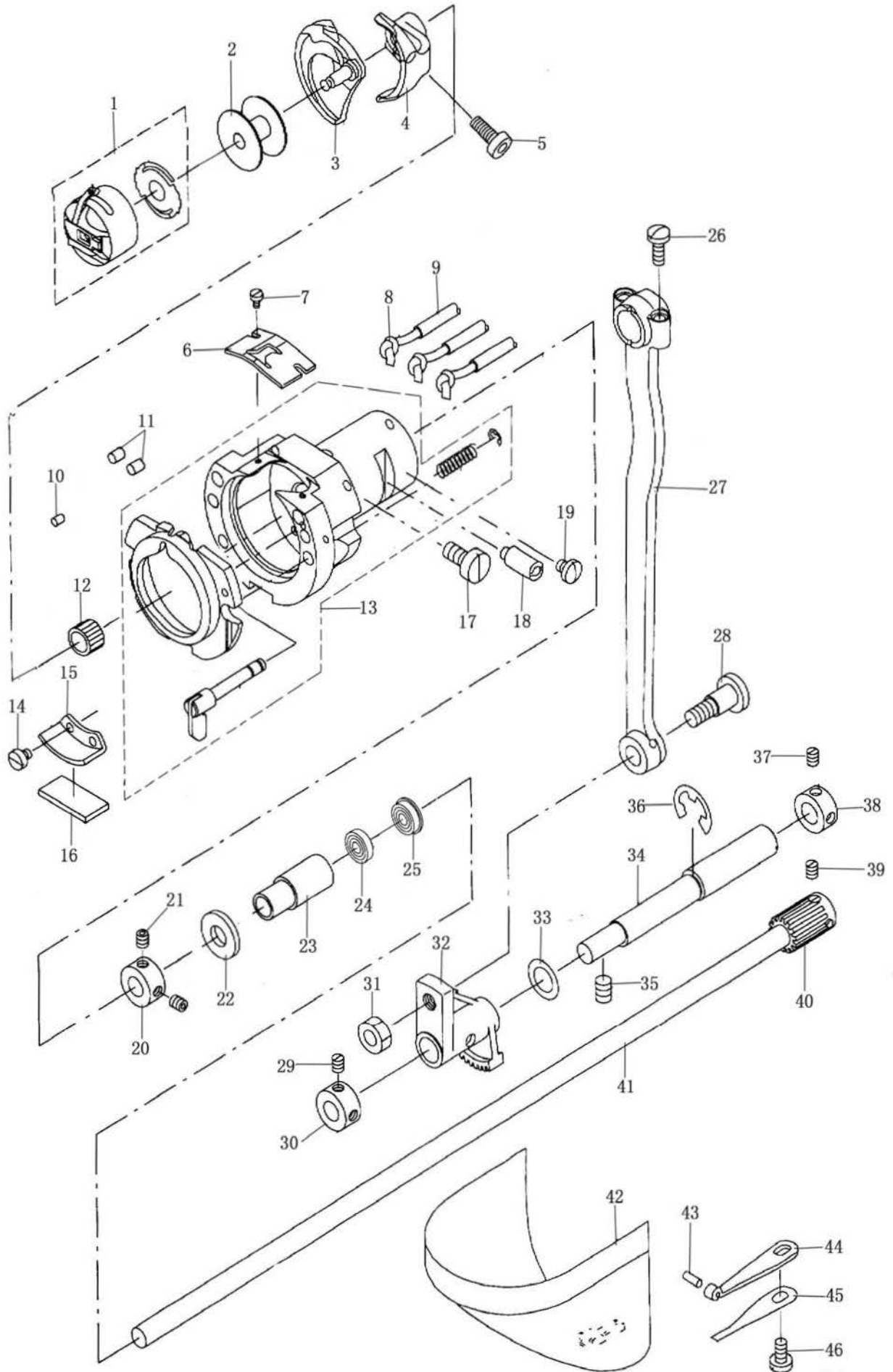


序号	物料号	名称	DESCRIPTION	数量
1	10022017	螺钉 M6×16	SCREW M6×16	1
2	10009654	开口挡圈 6	E-RING 6	2
3	10000642	压脚同曲柄	FORKED LING	1
4	10000514	销	SHAFT	1
5	10000639	压脚行程调节轴套	BUSHING REAR	2
6	10000638	压脚行程调节曲柄轴	INTERMEDIATE PRESSER CRANK SHAFT	1
7	10000479	压脚行程调节曲柄	INTERMEDIATE PRESSER CRANK	1
8	10011232	螺钉 M6×6	SCREW M6×6	1
9	10000632	螺母	NUT	1
10	10000480	垫圈 6×15×1.6	WASHER 6×15×1.6	1
11	10000633	压脚上下连杆	INTERMEDIATE PRESSER LINK	2
12	10000519	铰链螺钉 D=8 H=5.8	HINGE SCREW D=8 H=5.8	1
13	10008457	螺钉 11/64-40 L=4	SCREW 11/64-40 L=4	2
14	10000483	挡圈	THRUST COLLAR	1
15	10000482	销	SHAFT	1
16	10000528	铰链螺钉 D=8 H=5	HINGE SCREW D=8 H=5	3
17	10000485	压脚行程摆杆	INTERMEDIATE PRESSER POLE	1
18	10000481	铰链螺钉 D=8 H=4	HINGE SCREW D=8 H=4	1
19	10000520	螺钉 11/64-40 L=4	SCREW 11/64-40 L=4	2
20	10006208	压脚调节复位板A	POSITIONING LINK A	1
21	10000484	压脚调节复位板B	POSITIONING LINK B	1
22	10000521	压脚调节复位簧	INTERMEDIATE PRESSER SPRING	1
23	10011442	螺钉	SCREW	1
24	10010018	螺钉 9/64-40 L=8	SCREW 9/64-40 L=8	2
25	10000486	压脚提升板	LINK CONNECTING PLATE	1
26	10000637	手轮调节自锁板	ROCKING ADJUSTING SCREW STOPPER	1
27	10011142	螺钉 11/64-40 L=6	SCREW 11/64-40 L=6	1
28	10000475	压脚高度调节杆手轮	HEIGHT ADJUSTING KNOB	1
29	10012778	螺钉 M4×4	SCREW M4×4	1
30	10000476	压脚高度调节杆	ADJUSTING SHAFT	1
31	10000477	压脚高度调节杆固定架	ADJUSTING SHAFT BRACKET	1
32	10000478	螺钉 15/64-28 L=12	SCREW 15/64-28 L=12	2
33	10005103	调压螺钉组件	ADJUST PRESS SCREW ASM.	1
34	10000636	压脚调压导杆	PRESSER GUIDE BAR	1
35	10000522	压脚调压簧	INNER PRESSER SPRING	1
36	10010646	压杆	INNER PRESSER BAR	1
37	10010024	压紧杆架	PRESSER BAR GUIDE BRACKET	1
38	10003921	螺钉 1/4-40 L=8	SCREW 1/4-40 L=8	1
39	10000572	压杆轴套	INNER PRESSER BUSHING	1
40	10000487	护指架	FINGER GUARD	1

序号	物料号	名称	DESCRIPTION	数量
41	10000488	垫圈 4.3×7.8×0.8	WASHER 4.3×7.8×0.8	1
42	10010650	螺钉 9/64-28 L=10.5	SCREW 9/64-28 L=10.5	1
43	10000489	压脚	PRESS FEET	1
44	10010666	螺钉 11/64-40 L=14	SCREW 11/64-40 L=14	2
45	10004670	垫圈 4.5×8×0.8	WASHER 4.5×8×0.8	2
46	10000515	拾压脚电磁铁	SOLENOID	1
47	10007895	挡圈	RING	2
48	10000491	销	SHAFT	1
49	10000480	垫圈 6×15×1.6	WASHER 6×15×1.6	1
50	10004611	螺钉 3/16-28 L=12	SCREW 3/16-28 L=12	1
51	10004635	垫圈 4.8×11.5×2	WASHER 4.8×11.5×2	1
52	10000523	拾压脚电磁铁复位簧架	INNERPRESSER MAGNET STOPPER	1
53	10000490	压脚电磁铁复位簧	SPRING	1
54	10000517	铰链螺钉 D=6.35 H=3.2	HINGE SCREW D=6.35 H=3.2	1
55	10000436	压脚驱动臂A	LIFTING LINK A	1
56	10000433	螺钉	SCREW	1
57	10010817	螺钉 15/64-28 L=11.5	SCREW 15/64-28 L=11.5	1
58	10000492	压脚驱动臂B定位销	LIFTING LINK B SHAFT	1
59	10003657	轴承	BEARING	1
60	10000518	压脚驱动臂C定位销	LIFTING LINK C SHAFT	1
61	10000434	垫圈 11.2×16.3×1	WASHER 11.2×16.3×1	1
62	10000435	压脚驱动臂C	LIFTING LINK C	1
63	10000094	螺钉 3/16-28 L=10	SCREW 3/16-28 L=10	1
64	10000242	螺母 3/16-32	NUT 3/16-32	1
65	10000472	压脚驱动臂B	LIFTING LINK B	1
66	10000437	驱动臂B主动滚子	LIFTING LINK B ROLLER	1
67	10000372	铰链螺钉 D=6 H=4	HINGE SCREW D=6 H=4	1
68	10003485	轴承	BEARING	1
69	10008457	螺钉 11/64-40 L=4	SCREW 11/64-40 L=4	1
70	10002818	挡圈	THRUST COLLAR	1
71	10000629	螺钉	SCREW	1
72	10003241	垫圈 5	WASHER 5	1
73	10002271	螺母 M5	NUT M5	1
74	10000473	压脚驱动臂B复位簧	LIFTING LINK B SPRING	1
75	10000524	铰链螺钉 D=4 H=1.9	HINGE SCREW D=4 H=1.9	1
76	10002453	插件件母端2芯	CONNECTOR	1
77	10000643	压脚同步直杆	CHAIN LOOPER ROD	1
78	10000881	螺钉 1/4-40 L=5.8	SCREW 1/4-40 L=5.8	2
79	10000644	压脚同步连杆凸轮	ECCENTRIC CAM	1

## 6. 下轴部件

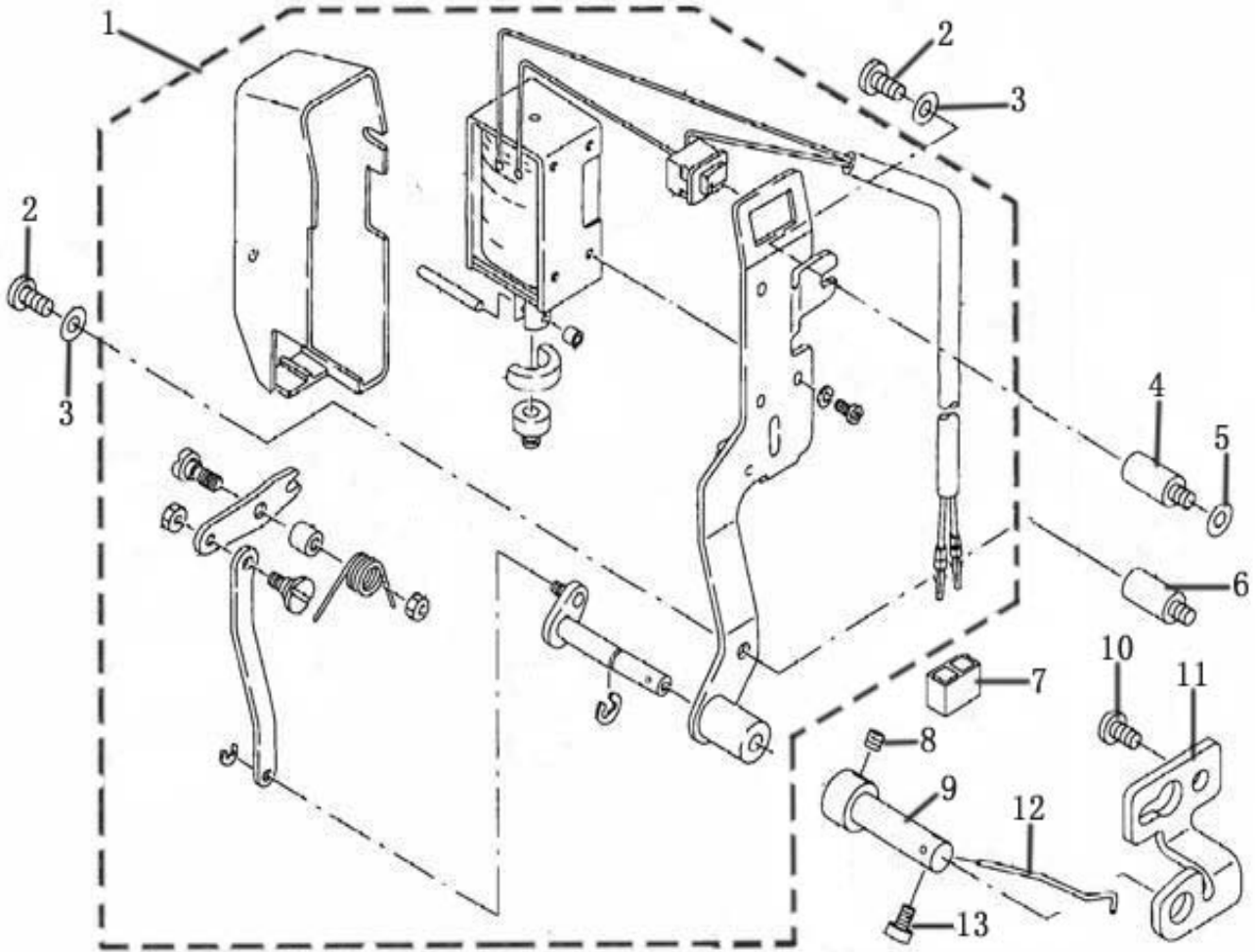
### SHUTTLE DRIVER SHAFT COMPONENTS



序号	物料号	名称	DESCRIPTION	数量
1	10003783	梭壳	BOBBIN CASE	1
2	10000649	梭心	BOBBIN	1
3	10003802	旋梭	SHUTTLE	1
4	10000573	梭托	SHUTTLE DRIVE	1
5	10004611	螺钉 3/16-28 L=12	SCREW 3/16-28 L=12	1
6	10004596	梭床簧	SHUTTLE UPPER SPRING	1
7	10010744	螺钉 3/32-56 L=3.5	SCREW 3/32-56 L=3.5	2
8	10008101	油线	OIL WICK	0.6
9	10007800	油管	TUBE	1.5
10	10011427	毛毡	FELT	1
11	10010798	毛毡	FELT	2
12	10006181	轴承	BEARING	1
	10006182	轴承	BEARING	1
	10006183	轴承	BEARING	1
	10006184	轴承	BEARING	1
13	10008336	梭床组件	SHUTTLE ASM.	1
14	10010797	螺钉 9/64-40 L=4	SCREW 9/64-40 L=4	2
15	10010742	油线夹板	SHUTTLE LUBRICATING PLATE	1
16	10010800	毛毡	FELT	1
17	10010817	螺钉 15/64-28 L=11.5	SCREW 15/64-28 L=11.5	1
18	10011426	销	SELL	1
19	10011425	螺钉 11/64-40 L=4.3	SCREW 11/64-40 L=4.3	1
20	10004600	挡圈	THRUST COLLER	1
21	10011570	螺钉 11/64-40 L=7	SCREW 11/64-40 L=7	2
22	10007147	轴承	BEARING	1
23	10007323	下轴轴套	LOWER SHAFT REAR METAL	1
24	10003534	轴承	BEARING	1
25	10026126	轴承	BEARING	1
26	10010801	螺钉 11/64-40 L=10.5	SCREW 11/64-40 L=10.5	1
27	10010739	大连杆	CRANK ROD	1
28	10010806	铰链螺钉 D=8 H=10	HINGE SCREW D=8 H=10	1
29	10008457	螺钉 11/64-40 L=4	SCREW 11/64-40 L=4	2
30	10010803	挡圈	THRUST COLLER	1
31	10010811	螺母 1/4-40	NUT 1/4-40	1
32	10000576	扇形齿轮	OSCILLATING	1
33	10010816	垫圈 10×17×1	WASHER 10×17×1	1
34	10010814	偏心轴	ECCENTRIC SHAFT	1
35	10010678	螺钉 15/64-28 L=8	SCREW 15/64-28 L=8	1
36	10003281	挡圈 9	RING 9	1
37	10000881	螺钉 1/4-40 L=5.8	SCREW 1/4-40 L=5.8	2
38	10010805	挡圈	THRUST COLLER	1
39	10013590	螺钉 11/64-40 L=4	SCREW 11/64-40 L=4	1
40	10000579	下轴齿轮	BOTTOM SHAFT WHEEL	1
41	10000578	下轴	BOTTOM SHAFT	1
42	20004123	梭床罩焊合	CYLINDER ARM CAP	1
43	10010815	销	SELL	1
44	10011420	弹簧	SPRING	1
45	10010807	弹簧	SPRING	1
46	10010808	螺钉 11/64-40 L=7.8	SCREW 11/64-40 L=7.8	1

## 7. 拨线组件

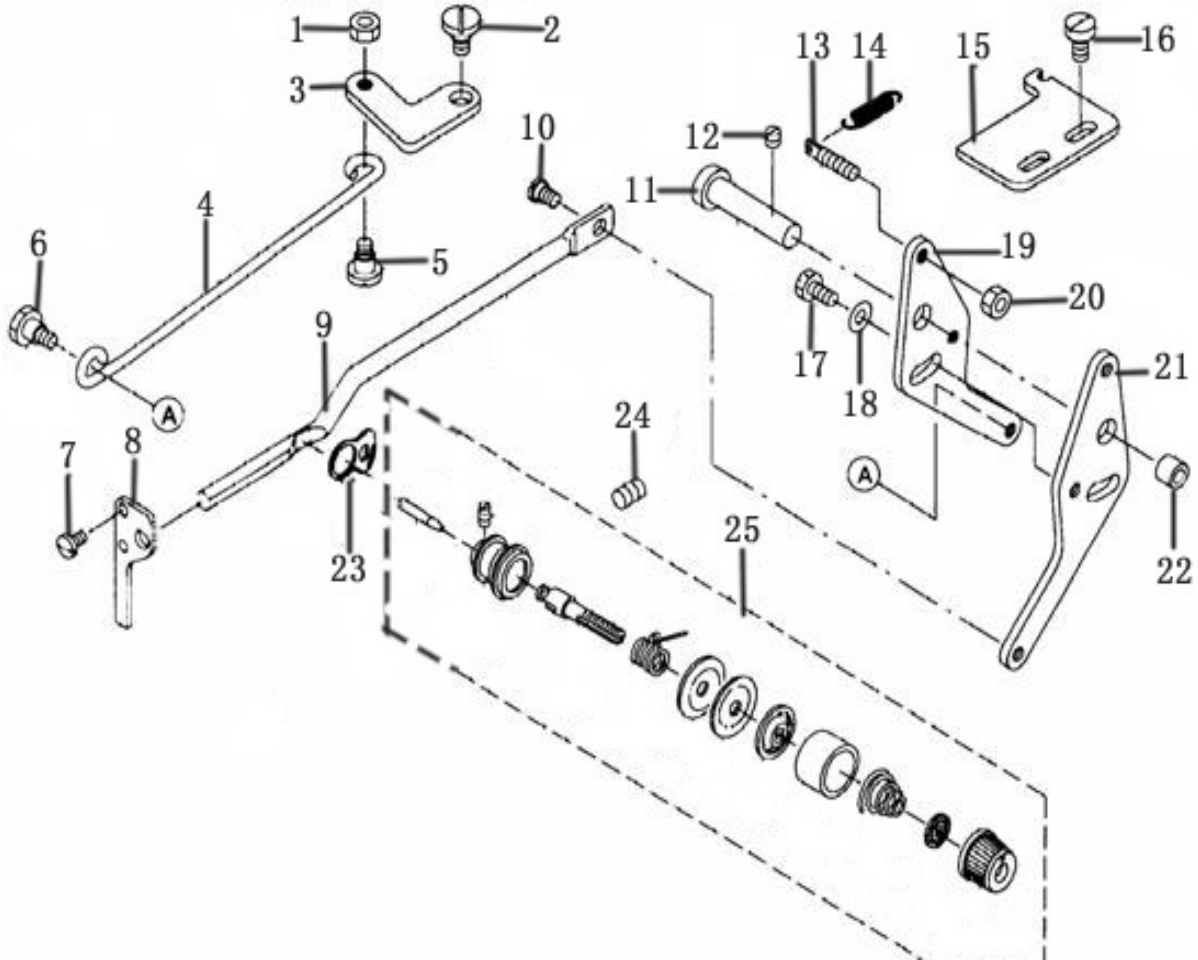
### WIPER MECHANISM COMPONENTS



序号	物料号	名称	DESCRIPTION	数量
1	10004110	拨线组件	WIPER ASM.	1
2	10004674	螺钉 11/64-40 L=7.8	SCREW 11/64-40 L=7.8	2
3	10011680	垫圈 4.6×9.7×0.8	WASHER 4.6×9.7×0.8	2
4	10000016	螺钉	SCREW	1
5	10011440	垫圈 5.1×10.2×1	WASHER 5.1×10.2×1	1
6	10000017	滑臂安装板螺柱	LOOPER COVER OIL SHIELD STUD	1
7	10002453	插件件母端2芯	CONNECTOR	1
8	10009074	螺钉 M4×4	SCREW M4×4	1
9	10000014	拨线杆滑臂	WIPER SHAFT CAP	1
10	10010668	螺钉 11/64-40 L=7.8	SCREW 11/64-40 L=7.8	2
11	10000013	滑臂安装板	WIPER SHAFT SUPPORT BRACKET	1
12	10000015	拨线杆	WIPER	1
13	10010071	螺钉 9/64-40 L=6	SCREW 9/64-40 L=6	1

## 8. 夹线、松线组件

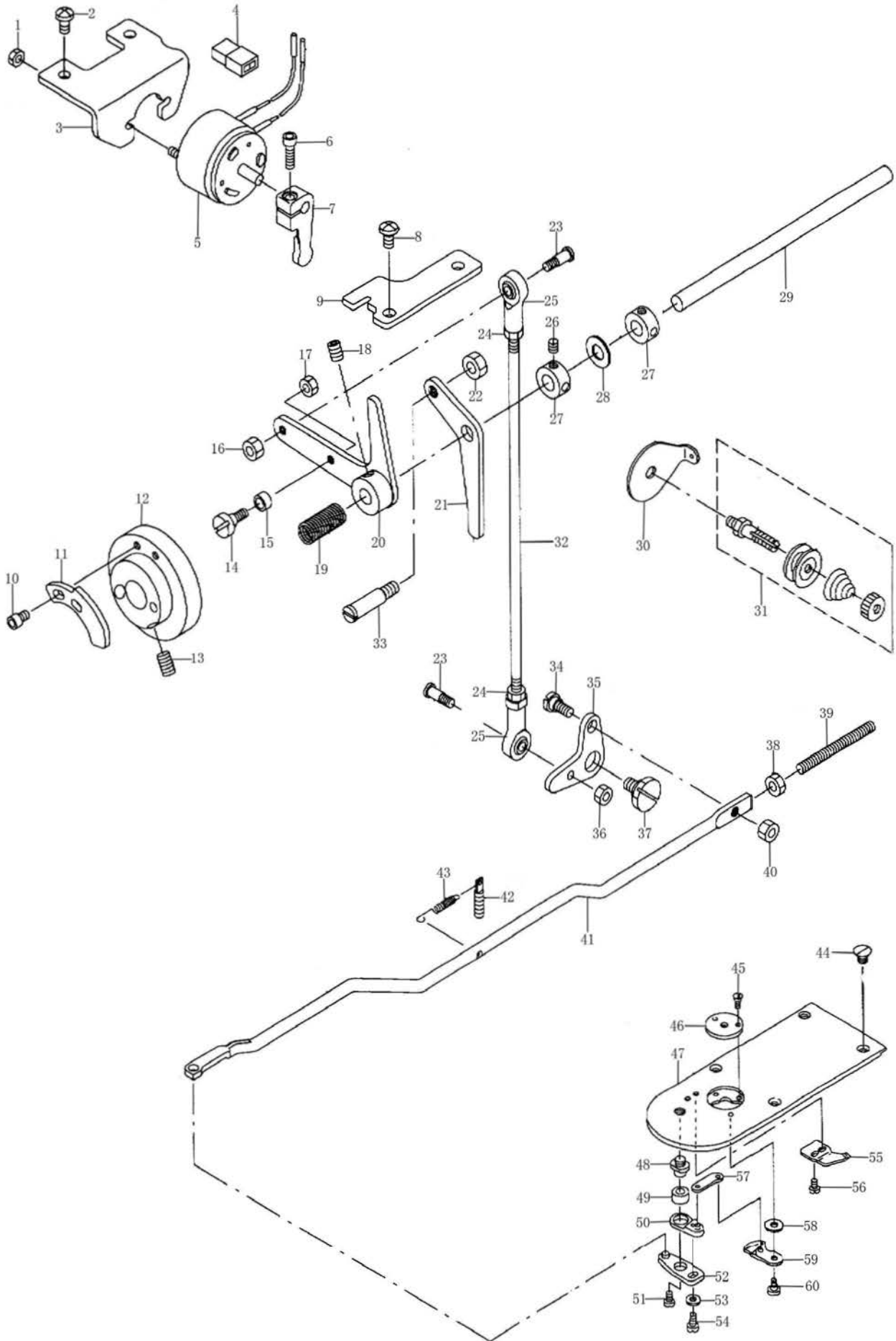
### TENSION RELEASE & THREAD TENSION COMPONENTS



序号	物料号	名称	DESCRIPTION	数量
1	10011492	螺母 3/16-28	NUT 3/16-28	1
2	10004634	铰链螺钉 D=7.24 H=3.2	HINGE SCREW D=7.24 H=3.2	1
3	10000589	松线传动板	TENSION RELEASE LINK	1
4	10000593	松线传动连杆	TENSION RELEASE CONNECTING ROD	1
5	10010677	铰链螺钉 D=6.35 H=3.9	HINGE SCREW D=6.35 H=3.9	1
6	10011489	铰链螺钉 D=6.35 H=4	HINGE SCREW D=6.35 H=4	1
7	10011143	螺钉 9/64-40 L=7	SCREW 9/64-40 L=7	2
8	10004629	松线杆支架	THREAD TENSION ARM	1
9	10004636	松线杆	TENSION RELEASE BAR	1
10	10004594	铰链螺钉 D=5.3 H=2	HINGE SCREW D=5.3 H=2	1
11	10000596	松线调节板轴	THREAD TRIMMER SHAFT	1
12	10000148	螺钉 3/16-28 L=6	SCREW 3/16-28 L=6	1
13	10011442	螺钉	SCREW	1
14	10000592	松线调节板复位弹簧	SPRING	1
15	10000588	复位弹簧接板	STOPPER PLATE	1
16	10000591	螺钉 3/16-28 L=9	SCREW 3/16-28 L=9	2
17	10000595	螺钉 11/64-40 L=9	SCREW 11/64-40 L=9	1
18	10004635	垫圈 4.8×11.5×2	WASHER 4.8×11.5×2	1
19	10004638	松线调节板	TENSION RELEASE ADJUSTING ARM	1
20	10010425	螺母 11/64-40	NUT 11/64-40	1
21	10004638	松线调节板	TENSION RELEASE ADJUSTING ARM	1
22	10002820	松线板轴挡圈	STOP MOTION TRIPPING LEVER CAM	1
23	10000741	传感片内绝缘片	GUIDE PLATE	1
24	10010678	螺钉 15/64-28 L=8	SCREW 15/64-28 L=8	1
25	10001274	夹线器组件	SECOND THREAD TENSION ASM	1

## 9. 底线剪线部件

### THREAD TRIMMER MECHANISM COMPONENTS

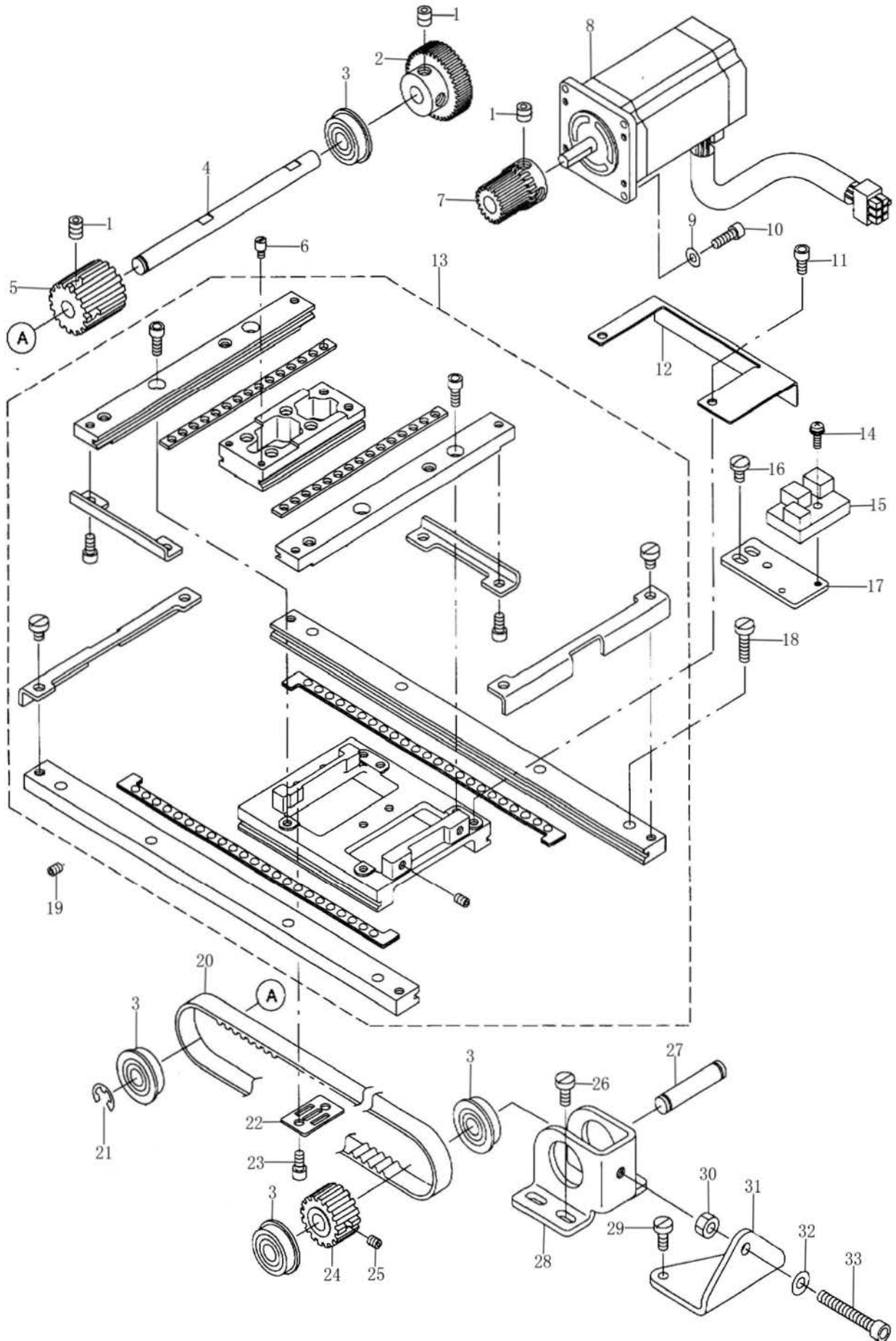


序号	物料号	名称	DESCRIPTION	数量
1	10002076	螺母 M4	NUT M4	2
2	10000591	螺钉 3/64-28 L=9	SCREW 3/64-28 L=9	2
3	10000542	剪线电磁铁固定板	MAGNET INSTALLING PLATE	1
4	10002453	插件件母端2芯	CONNECTOR	1
5	10000543	剪线电磁铁	SOLENOID	1
6	10014395	螺钉 M4×14	CSCREW M4×14	1
7	10000539	剪线电磁铁曲柄	THREAD TRIMMER MAGNET ARM	1
8	10000591	螺钉 3/64-28 L=9	SCREW 3/64-28 L=9	2
9	10000538	从动器挡板	CAM INSTALLING LINK STOPPER	1
10	10010685	螺钉 M4×5	SCREW M4×5	2
11	10011434	松线卡头	TENSION RELEASE NOTCH	1
12	10011451	凸轮	THREAD TRIMMER CAM	1
13	10013465	螺钉 1/4-40 L=10	SCREW 1/4-40 L=10	2
14	10011445	铰链螺钉 D=5.5 H=4.1	HINGE SCREW D=5.5 H=4.1	1
15	10011441	剪线凸轮滚柱	ROLLER	1
16	10010425	螺母 11/64-40	NUT 11/64-40	1
17	10010425	螺母 11/64-40	NUT 11/64-40	1
18	10010678	螺钉 15/64-28 L=8	SCREW 15/64-28 L=8	1
19	10011450	弹簧	SPRING	1
20	10004135	凸轮从动器组件	CAM INSTALLING LINK	1
21	10002819	剪线曲柄板手	TENSION RELEASE ARM	1
22	10010725	螺母 15/64-28	NUT 15/64-28	1
23	10011432	铰链螺钉 D=5 H=8	HINGE SCREW D=5 H=8	2
24	10011438	螺母 M5	NUT M5	2
25	10011586	万能接头组件	ALL-POWERFUL DEAL WITH CONTACT	2
26	10008457	螺钉 11/64-40 L=4	SCREW 11/64-40 L=4	2
27	10004600	挡圈	TURN	2
28	10011498	垫圈 8×16.2×1.7	WASHER 8×16.2×1.7	1
29	10011430	剪线轴	THREAD TRIMMER SHAFT	1
30	10000541	夹线器过线器	UPPER LOOPER THREAD GUIDE	1
31	10011493	夹线组件	FIRST THREAD TENSION ASM.	1
32	10000540	剪线连杆	THREAD TRIMMER CONNECTING ROD	1
33	10011443	螺钉 15/64-28 L=9.7	SCREW 15/64-28 L=9.7	1
34	10011449	铰链螺钉 D=6.5 H=3	HINGE SCREW D=6.5 H=3	1
35	10011431	剪线曲柄	THREAD TRIMMER LINK	1
36	10010425	螺母 11/64-40	NUT 11/64-40	1
37	10011446	铰链螺钉 D=11 H=3	HINGE SCREW D=11 H=3	1
38	10011438	螺母 M5	NUT M5	1
39	10000547	螺钉 M5×50	SCREW M5×50	1
40	10011492	螺母 3/16-28	NUT 3/16-28	1

序号	物料号	名称	DESCRIPTION	数量
41	10000534	剪线刀传动杆	THREAD TRIMMER CONNECTING BAR	1
42	10011442	螺钉 11/64-40 L=23.5	SCREW 11/64-40 L=23.5	1
43	10000535	剪线刀传动杆拉簧	THREAD TRIMMER LINK SPRING	1
44	10000101	螺钉 11/64-40 L=6.5	SCREW 11/64-40 L=6.5	4
45	10011509	螺钉 3/32-56 L=1.8	SCREW 3/32-56 L=1.8	2
46	10000750	小针板	NEEDLE HOLE GUIDE	1
47	10000537	针板	NEEDLE PLATE	1
48	10011455	螺钉 1/4-40 L=2.8	SCREW 1/4-40 L=2.8	1
49	10011502	动刀杆销衬套	THREAD CUTTING LEVER RING	1
50	10006768	动刀曲柄分组件	THREAD CUTTER LEVER ASM.	1
51	10011503	螺钉 11/64-40 L=4	SCREW 11/64-40 L=4	1
52	10010737	动刀传动杆分组件	THREAD CUTTER LEVER ASM.	1
53	10011506	垫圈 4.7×7.5×0.8	WASHER 4.7×7.5×0.8	1
54	10009906	螺钉 11/64-40 L=7	SCREW 11/64-40 L=7	1
55	10000718	定刀	COUNTER KNIFE	1
56	10011499	螺钉 9/64-40 L=3.5	SCREW 9/64-40 L=3.5	2
57	10025590	动刀连杆	MOVING KNIFE LINK	1
58	10025586	垫圈 11×3.8×0.9	WASHER 11×3.8×0.9	1
	10025587	垫圈 11×3.8×1	WASHER 11×3.8×1	1
	10025588	垫圈 11×3.8×1.1	WASHER 11×3.8×1.1	1
	10025589	垫圈 11×3.8×1.2	WASHER 11×3.8×1.2	1
59	10011694	动刀分组件	MOVING KNIFE COMPL.	1
60	10011500	铰链螺钉 D=5 H=0.85	HINGE SCREW D=5 H=0.85	1

10. X- Y 部件 (1)

X- Y COMPONENTS (1)



序号	物料号	名称	DESCRIPTION	数量
1	10011232	螺钉 M6×6	SCREW M6×6	6
2	10000551	X向传动直齿轮	X DRIVE GEAR	1
3	10003582	轴承	RADIAL BEARING	4
4	10000553	X向驱动轴	X DRIVE SHAFT	1
5	10000562	X向驱动轴带轮	X DRIVE SPROCKET	1
6	10000555	螺钉 1/8-44 L=3	SCREW 1/8-44 L=3	2
7	10000175	X向电机直齿轮	X DRIVE GEAR	1
8	10001247	5770步进电机	5770 STEPPING MOTOR	1
9	10004670	垫圈 4.5×8×0.8	WASHER 4.5×8×0.8	4
10	10000863	螺钉 M4×12	SCREW M4×12	4
11	10003399	螺钉 M4×8	SCREW M4×8	2
12	10000550	X向传感器检测板	X SENSOR EXAMINATION PLATE	1
13	10024778	X和Y向导轨组件	X-Y TABLE ASM.	1
14	10000984	螺钉	SCREEW	1
15	10000673	X向传感器	X SENSOR	1
16	10010668	螺钉 11/64-40 L=7.8	SCREW 11/64-40 L=7.8	2
17	10000751	X向传感器安装板	X SENSOR INSTALLING PLATE	1
18	10013616	螺钉 11/64-40 L=12	SCREW 11/64-40 L=12	8
19	10000205	螺钉 3/16-28 L=7	SCREW 3/16-28 L=7	2
20	10026172	X向同步带	X TIMING BELT	1
21	10009654	开口挡圈 6	E-RING 6	1
22	10026108	X向同步带压板	X BELT RECEIVER	1
23	10001979	螺钉 M4×8	SCREW M4×8	2
24	10000562	X向驱动轴带轮	X DRIVE SPROCKET	1
25	10011232	螺钉 M6×6	SCREW M6×6	2
26	10011101	螺钉 11/64-40 L=11	SCREW 11/64-40 L=11	4
27	10011507	提升架轴	LIFTING LEVER SHAFT	1
28	10000548	X向带轮安装架	X DRIVE BRACKET	1
29	10011101	螺钉 11/64-40 L=11	SCREW 11/64-40 L=11	2
30	10001146	螺母 M5	NUT M5	1
31	10000549	X向带轮限位架	X BELT ADJUSTING BRACKET	1
32	10009469	垫圈 5	WASHER 5	1
33	10003100	螺钉 M5×35	SCREW M5×35	1

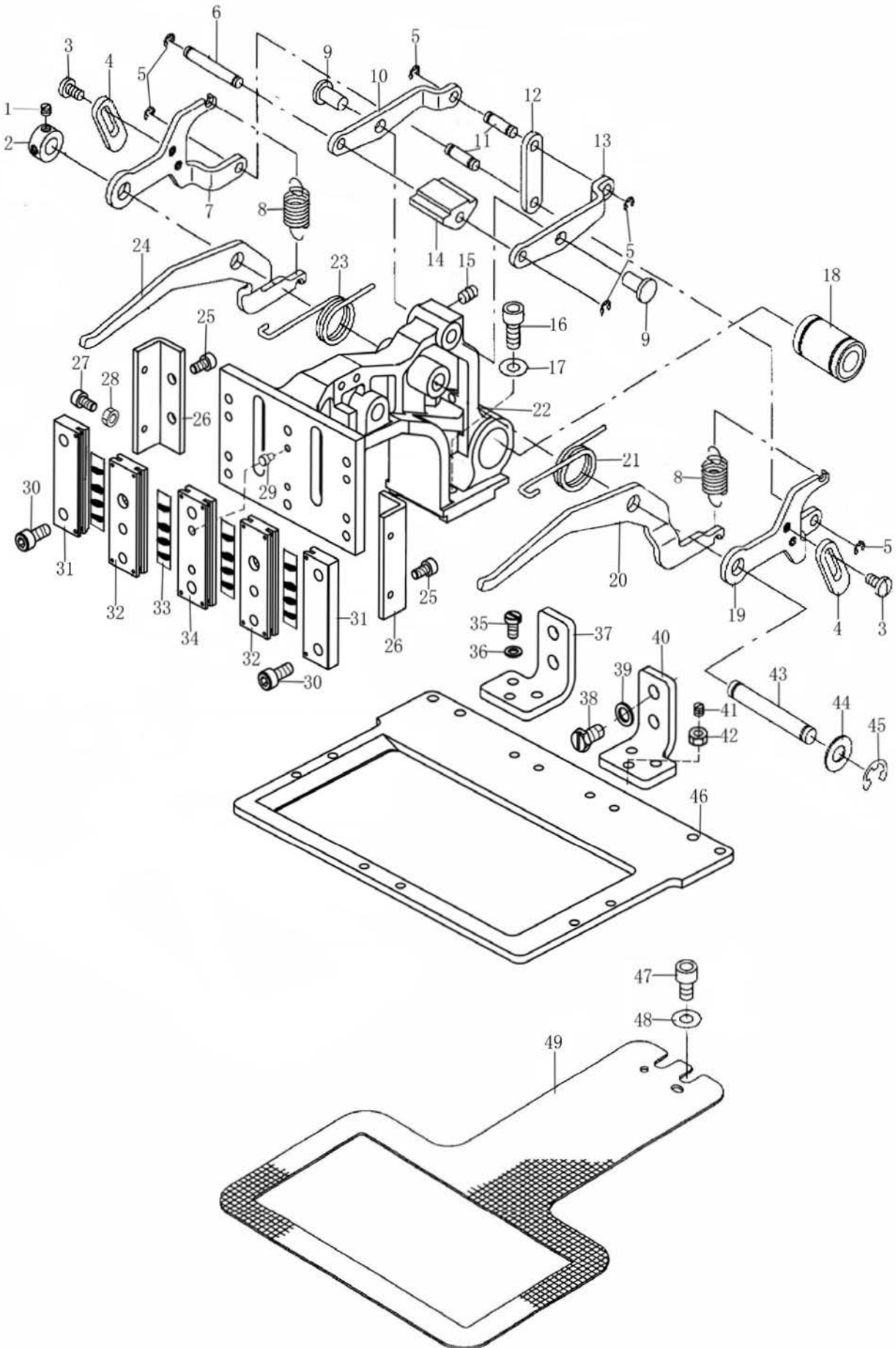


序号	物料号	名称	DESCRIPTION	数量	备注
1	10001247	5770步进电机	5770 STEPPING MOTOR	1	
2	10007241	推力球轴承挡圈	BEARING TURN	2	
3	10007147	单向推力球轴承	BEARING	1	
4	10003399	螺钉 M4×8	SCREW M4×8	1	
5	10000713	Y轴电机传感片	Y SENSOR SLIF	1	
6	10000387	螺钉 9/64-40 L=13.5	SCREW 9/64-40 L=13.5	1	
7	10007285	长传感器	PHOTO INTERRUPTER	1	
8	10000712	Y轴电机齿轮	Y DRIVE GEAR	1	
9	10011232	螺钉 M6×6	SCREW M6×6	6	
10	10002733	Y向驱动轴齿轮	Y DRIVEN GEAR	1	
11	10003582	轴承	BEARING	4	
12	10000562	X向驱动轴带轮	X DRIVE SPROCKET	1	
13	10002395	Y向同步带	Y TIMING BELT	1	
14	10004670	垫圈 8×4.5×0.8	WASHER 8×4.5×0.8	4	
15	10000391	螺钉 9/64-40 L=10.5	SCREW 9/64-40 L=10.5	4	
16	10000561	X向辅助带轮	X DRIVEN SPROCKET	1	
17	10000563	螺钉 M4×5	SCREW M4×5	1	
18	10011507	提升架轴	LIFTING LEVER SHAFT	1	
19	10006392	Y向辅助带轮座	Y DRIVEN BRACKET	1	
20	10000381	螺钉 M4×20	SCREW M4×20	1	
21	10002765	垫圈 9×4.3×0.8	WASHER 9×4.3×0.8	1	
22	10000390	垫圈 13×5.5×1	WASHER 13×5.5×1	4	
23	10002748	螺钉 M5×9.5	SCREW M5×9.5	4	
24	10011571	轴套	BUSHING	2	
25	10000710	Y轴同步带夹紧块	Y BELT BRACKET	1	
26	10026178	Y向同步带压板	Y BELT RECEIVER	1	
27	10010666	螺钉 11/64-40 L=14	SCREW 11/64-40 L=14	1	
28	10000380	螺钉 11/64-40 L=18	SCREW 11/64-40 L=18	1	
29	10000388	Y向驱动轴	Y DRIVE SHAFT	1	
30	10009654	开口卡圈 6	E-RING 6	1	
31	10000386	Y轴	Y REMOVAL SHAFT	1	
32	10000384	螺钉 15/64-28 L=8.5	SCREW 15/64-28 L=8.5	2	
33	10000385	Y轴连接板	Y REMOVAL BRACKET	1	#01
	10006391	Y轴连接板	Y REMOVAL BRACKET	1	#02
34	10000186	螺钉 11/64-40 L=4	SCREW 11/64-40 L=4	1	
35	10000383	X导向轴架	X GUIDE SHAFT BRACKET	1	#01
	10006390	X导向轴架	X GUIDE SHAFT BRACKET	1	#02
36	10005122	螺钉 M6×10	SCREW M6×10	1	
37	10000382	X导向轴	X GUIDE GEAR	1	#01
	10006389	X导向轴	X GUIDE GEAR	1	#02

备注： #01 5770-1306系列机用； #02 5770-1507系列机用

12. 压料部件

CLOTH FEED MECHANISM COMPONENTS



序号	物料号	名称	DESCRIPTION	数量
1	10000459	螺钉 11/64-40 L=5	SCREW 11/64-40 L=5	2
2	10007549	调准轴套	THRUST COLLAR	1
3	10000264	螺钉 11/64-40 L=8.5	SCREW 11/64-40 L=8.5	4
4	10000411	限位板	LINK STOPPER	2
5	10003248	开口挡圈 3	E-RING 3	6
6	10000394	滑块轴	SLIDER SHAFT	1
7	10026352	左支撑板	SUPPORT LINK LEFT	1
8	10000730	平衡接簧	SPRING	2
9	10002822	压脚调准连接销	FEED REGULATOR CONNECTING ROD	2
10	10000393	左短拉杆	BRACKET UPPER LINK LEFT	1
11	10000413	短销	CYLINDER PIN	2
12	10000414	连接板	FEED BRACKET LINK	1
13	10000392	右短拾杆	BRACKET UPPER LINK RIGHT	1
14	10006315	滑块	SLIDER	1
15	10004949	螺钉 M5×8	SCREW M5×8	2
16	10022017	螺钉 M6×16	SCREW M6×16	2
17	10000109	垫片 10.7×6.6×1	WASHER 10.7×6.6×1	8
18	10003647	直线轴承	SLIDE BEARING	1
19	10026353	右支撑板	SUPPORT LINK RIGHT	1
20	10000408	右长拾杆	LIFTING LEVER RIGHT	1
21	10000416	压脚复位右簧	SPRING RIGHT	1
22	10024557	送料架	FEED BRACKET	1
23	10000415	压脚复位左簧	SPRING LEFT	1
24	10000409	左长拾杆	LIFTING LEVER LEFT	1
25	10003399	螺钉 M4×8	SCREW M4×8	4
26	10026328	导轨调整板	TRACK ADJUST LINK	2
27	10000909	螺钉 M3×8	SCREW M3×8	4
28	10003028	螺母 M3	NUT M3	4
29	10000728	压脚框定位销	FEEDING FRAME PIN	2
30	10000259	螺钉 M5×12	SCREW M5×12	6
31	10024558	导轨1组件	TRACK 1 ASM.	2
32	10024556	导轨3	TRACK 3	2
33	10008055	保持架组件	BEARING	4
34	10024559	导轨2组件	TRACK 2 ASM.	1
35	10000264	螺钉 11/64-40 L=8.5	SCREW 11/64-40 L=8.5	4
36	10004670	垫片 4.5×8×0.8	WASHER 4.5×8×0.8	4
37	10026332	左压脚	RECEIVER PLATE LEFT	1
38	10001072	螺钉 15/64-28 L=11	SCREW 15/64-28 L=11	4
39	10000109	垫片 10.7×6.6×1	WASHER 10.7×6.6×1	4
40	10026333	右压脚	RECEIVER PLATE RIGHT	1
41	10010678	螺钉 15/64-28 L=8	SCREW 15/64-28 L=8	2
42	10010725	螺母 15/64-28	NUT 15/64-28	2
43	10024560	轴承座轴	SHAFT BLOCK SHAFT	1
44	10005510	垫片 14×8×1	WASHER 14×8×1	1
45	10005473	开口挡圈 7	E-RING 7	1
46	10026323	压脚框	FEEDING FRAME	1
47	10005122	螺钉 M6×10	SCREW M6×10	2
48	10000109	垫片 10.7×6.6×1	WASHER 10.7×6.6×1	2
49	10007835	送料板	LOWER PLATE	1

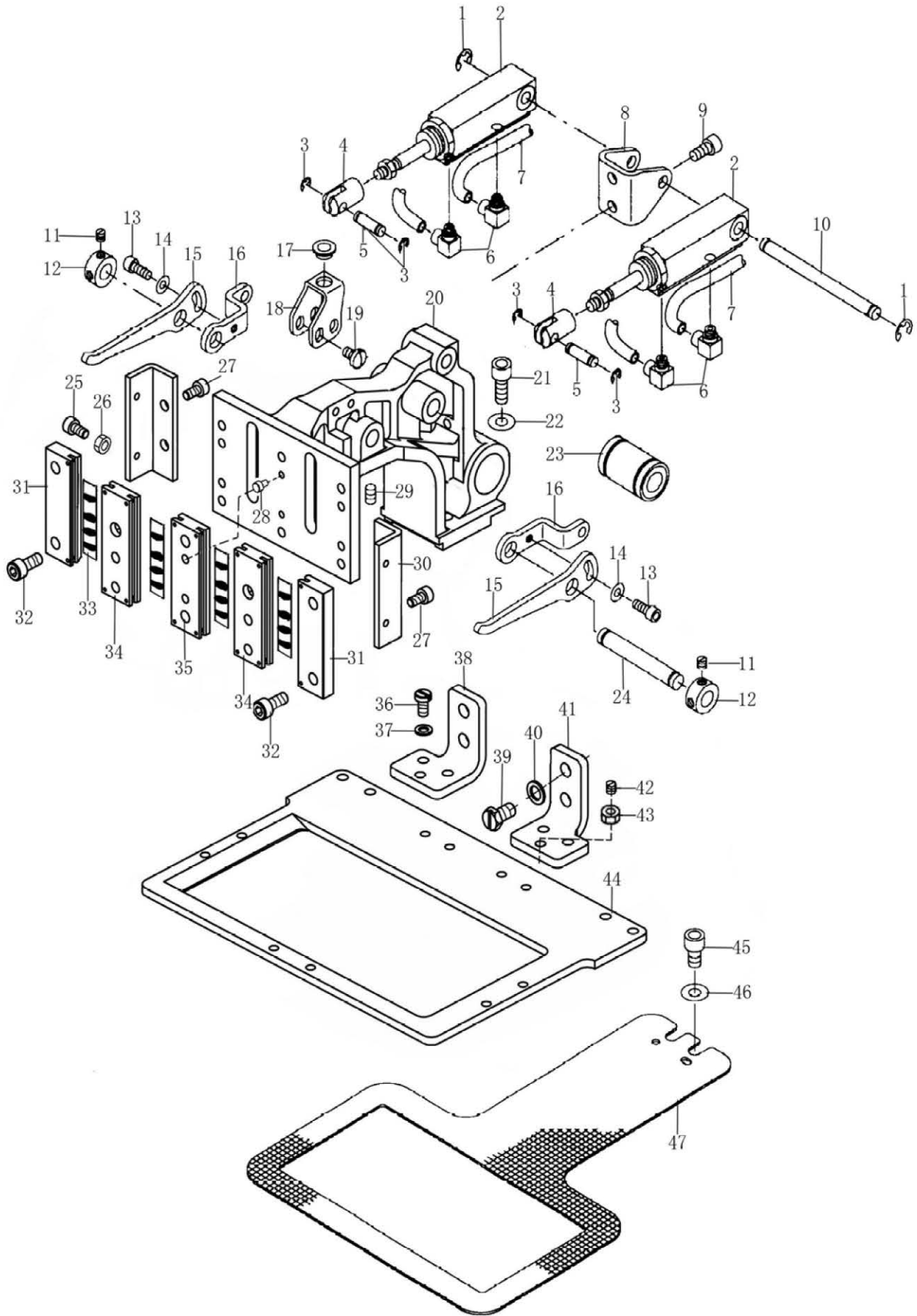
备注： 此部件为5770-1306HA系列、5770-1507HA系列

第 25 页

From the library of: Superior Sewing Machine & Supply LLC

12. 压料部件

CLOTH FEED MECHANISM COMPONENTS

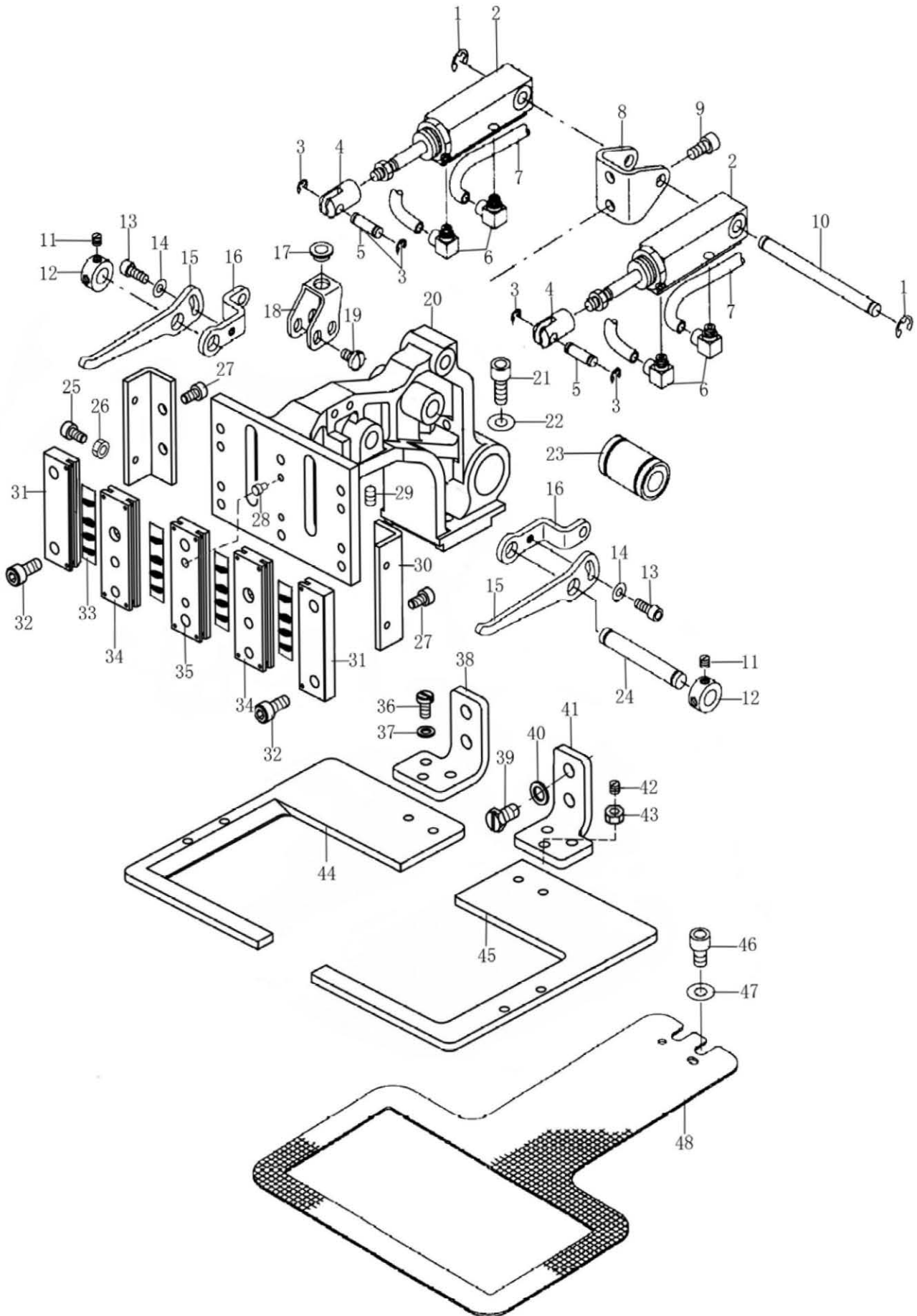


序号	物料号	名称	DESCRIPTION	数量
1	10009653	开口挡圈 4	E-RING 4	2
2	10001263	气缸组件	CYLINDER ASM.	2
3	10003248	开口卡圈 3	E-RING 3	4
4	10001250	压料气缸接头	CYLINDER KNUCKLE	2
5	10000413	短销	PIN	2
6	10007681	气管接头	HOSE ELBOW	4
7	10008119	气管 $\phi 2.5 \times \phi 4$	WRETHANE HOSE	3
8	10001255	气缸固定板	CYLINDER INSTALLING BASE	1
9	10000259	螺钉 M5×12	SCREW M5×12	2
10	10001262	销	PIN	1
11	10000459	螺钉 11/64-40 L=5	SCREW 11/64-40 L=5	4
12	10007549	调准轴套	THRUST COLLAR	2
13	10003399	螺钉 M4×8	SCREW M4×8	2
14	10004670	垫圈 8×4.5×0.8	WASHER 8×4.5×0.8	2
15	10024563	驱动臂	LINK PLATE	2
16	10024562	气缸驱动板	CYLINDER LINK PLATE	2
17	10001261	挡圈	CLAMP SHAFT HOLDER	1
18	10024561	送料架固定板	SLIDER BASE	1
19	10009906	螺钉 11/64-40 L=7	SCREW 11/64-40 L=7	4
20	10024557	送料架	FEED BRACKET	1
21	10022017	螺钉 M6×16	SCREW M6×16	2
22	10000109	垫圈 10.7×6.6×1	WASHER 10.7×6.6×1	2
23	10003647	直线轴承	SLIDE BEARING	1
24	10024560	轴承座轴	SHAFT BLOCK SHAFT	1
25	10000909	螺钉 M3×8	SCREW M3×8	4
26	10003028	螺母 M3	NUT M3	4
27	10003399	螺钉 M4×8	SCREW M4×8	4
28	10000728	压脚框定位销	FEEDING FRAME PIN	2
29	10004949	螺钉 M5×8	SCREW M5×8	1
30	10026328	导轨调整板	TRACK ADJUST LINK	2
31	10024558	导轨1组件	TRACK 1 ASM.	2
32	10000259	螺钉 M5×12	SCREW M5×12	6
33	10008055	保持架组件	BEARING	4
34	10024556	导轨3	TRACK 3	2
35	10024559	导轨2组件	TRACK 2 ASM.	1
36	10000264	螺钉 11/64-40 L=8.5	SCREW 11/64-40 L=8.5	4
37	10004670	垫圈 8×4.5×0.8	WASHER 8×4.5×0.8	4
38	10026332	左压脚	RECEIVER PLATE LEFT	1
39	10001072	螺钉 15/64-28 L=11	SCREW 15/64-28 L=11	4
40	10000109	垫圈 10.7×6.6×1	WASHER 10.7×6.6×1	4
41	10026333	右压脚	RECEIVER PLATE RIGHT	1
42	10010678	螺钉 15/64-28 L=8	SCREW 15/64-28 L=8	2
43	10010725	螺母 15/64-28	NUT 15/64-28	2
44	10026323	压脚框	FEEDING FRAME	1
45	10005122	螺钉 M6×10	SCREW M6×10	2
46	10000109	垫圈 10.7×6.6×1	WASHER 10.7×6.6×1	2
47	10007835	送料板	LOWER PLATE	1

备注：此部件为5770-1306HF系列、5770-1507HF系列

12. 压料部件

CLOTH FEED MECHANISM COMPONENTS

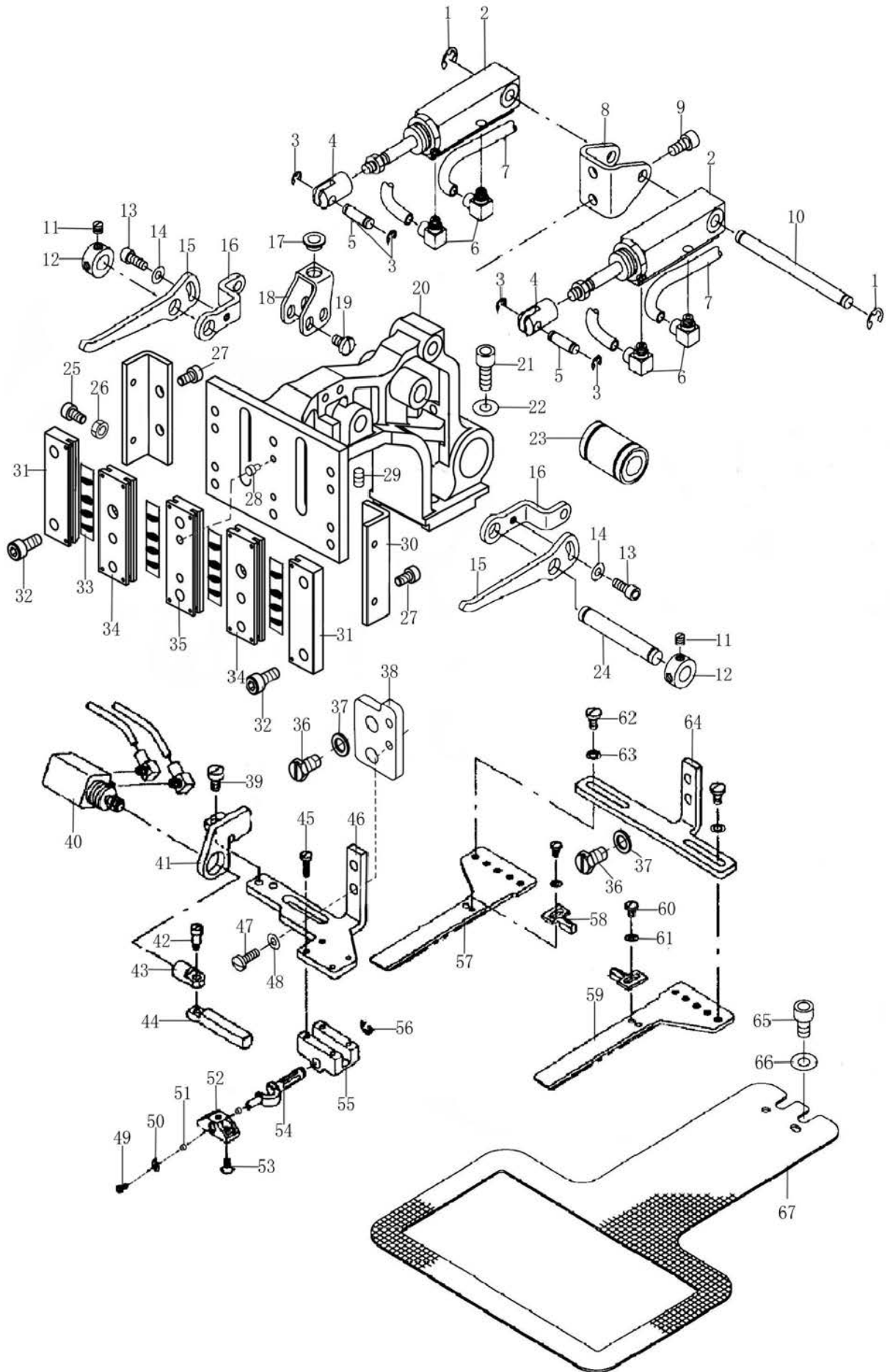


序号	物料号	名称	DESCRIPTION	数量
1	10009653	开口挡圈 4	E-RING 4	2
2	10001263	气缸组件	CYLINDER ASM.	2
3	10003248	开口卡圈 3	E-RING 3	4
4	10001250	压料气缸接头	CYLINDER KNUCKLE	2
5	10000413	短销	PIN	2
6	10007681	气管接头	HOSE ELBOW	4
7	10008119	气管 $\phi 2.5 \times \phi 4$	WRETHANE HOSE	3
8	10001255	气缸固定板	CYLINDER INSTALLING BASE	1
9	10000259	螺钉 M5×12	SCREW M5×12	2
10	10001262	销	PIN	1
11	10000459	螺钉 11/64-40 L=5	SCREW 11/64-40 L=5	4
12	10007549	调准轴套	THRUST COLLAR	2
13	10003399	螺钉 M4×8	SCREW M4×8	2
14	10004670	垫圈 8×4.5×0.8	WASHER 8×4.5×0.8	2
15	10024563	驱动臂	LINK PLATE	2
16	10024562	气缸驱动板	CYLINDER LINK PLATE	2
17	10001261	挡圈	CLAMP SHAFT HOLDER	1
18	10024561	送料架固定板	SLIDER BASE	1
19	10009906	螺钉 11/64-40 L=7	SCREW 11/64-40 L=7	4
20	10024557	送料架	FEED BRACKET	1
21	10022017	螺钉 M6×16	SCREW M6×16	2
22	10000109	垫圈 10.7×6.6×1	WASHER 10.7×6.6×1	2
23	10003647	直线轴承	SLIDE BEARING	1
24	10024560	轴承座轴	SHAFT BLOCK SHAFT	1
25	10000909	螺钉 M3×8	SCREW M3×8	4
26	10003028	螺母 M3	NUT M3	4
27	10003399	螺钉 M4×8	SCREW M4×8	4
28	10000728	压脚框定位销	FEEDING FRAME PIN	2
29	10004949	螺钉 M5×8	SCREW M5×8	1
30	10026328	导轨调整板	TRACK ADJUST LINK	2
31	10024558	导轨1组件	TRACK 1 ASM.	2
32	10000259	螺钉 M5×12	SCREW M5×12	6
33	10008055	保持架组件	BEARING	4
34	10024556	导轨3	TRACK 3	2
35	10024559	导轨2组件	TRACK 2 ASM.	1
36	10000264	螺钉 11/64-40 L=8.5	SCREW 11/64-40 L=8.5	4
37	10004670	垫圈 8×4.5×0.8	WASHER 8×4.5×0.8	4
38	10026332	左压脚	RECEIVER PLATE LEFT	1
39	10001072	螺钉 15/64-28 L=11	SCREW 15/64-28 L=11	4
40	10000109	垫圈 10.7×6.6×1	WASHER 10.7×6.6×1	4
41	10026333	右压脚	RECEIVER PLATE RIGHT	1
42	10010678	螺钉 15/64-28 L=8	SCREW 15/64-28 L=8	2
43	10010725	螺母 15/64-28	NUT 15/64-28	2
44	10026785	左压脚框	FEEDING FRAME LEFT	1
45	10026789	右压脚框	FEEDING FRAME RIGHT	1
46	10005122	螺钉 M6×10	SCREW M6×10	2
47	10000109	垫圈 10.7×6.6×1	WASHER 10.7×6.6×1	2
48	10007835	送料板	LOWER PLATE	1

备注：此部件为5770-1306HB系列、5770-1306HC系列、  
5770-1507HB系列、5770-1507HC系列

# 12. 压料部件

## CLOTH FEED MECHANISM COMPONENTS



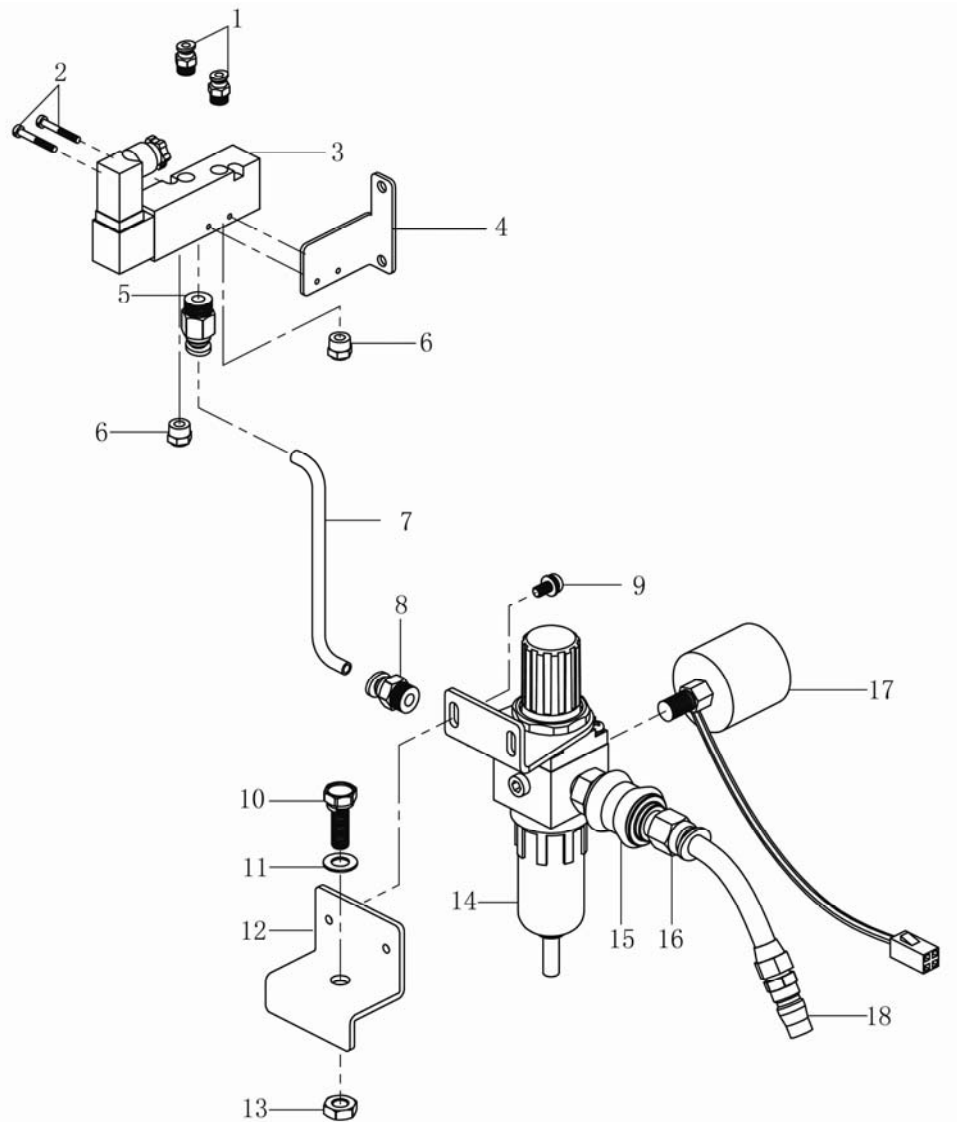
序号	物料号	名称	DESCRIPTION	数量
1	10009653	开口挡圈 4	E-RING 4	2
2	10001263	气缸组件	CYLINDER ASM.	2
3	10003248	开口卡圈 3	E-RING 3	4
4	10001250	压料气缸接头	CYLINDER KNUCKLE	2
5	10000413	短销	PIN	2
6	10007681	气管接头	HOSE ELBOW	4
7	10008119	气管 $\phi 2.5 \times \phi 4$	WRETHANE HOSE	3
8	10001255	气缸固定板	CYLINDER INSTALLING BASE	1
9	10000259	螺钉 M5×12	SCREW M5×12	2
10	10001262	销	PIN	1
11	10000459	螺钉 11/64-40 L=5	SCREW 11/64-40 L=5	4
12	10007549	调准轴套	THRUST COLLAR	2
13	10003399	螺钉 M4×8	SCREW M4×8	2
14	10004670	垫圈 8×4.5×0.8	WASHER 8×4.5×0.8	2
15	10024563	驱动臂	LINK PLATE	2
16	10024562	气缸驱动板	CYLINDER LINK PLATE	2
17	10001261	挡圈	CLAMP SHAFT HOLDER	1
18	10024561	送料架固定板	SLIDER BASE	1
19	10009906	螺钉 11/64-40 L=7	SCREW 11/64-40 L=7	4
20	10024557	送料架	FEED BRACKET	1
21	10022017	螺钉 M6×16	SCREW M6×16	2
22	10000109	垫圈 10.7×6.6×1	WASHER 10.7×6.6×1	2
23	10003647	直线轴承	SLIDE BEARING	1
24	10024560	轴承座轴	SHAFT BLOCK SHAFT	1
25	10000909	螺钉 M3×8	SCREW M3×8	4
26	10003028	螺母 M3	NUT M3	4
27	10003399	螺钉 M4×8	SCREW M4×8	4
28	10000728	压脚框定位销	FEEDING FRAME PIN	2
29	10004949	螺钉 M5×8	SCREW M5×8	1
30	10026328	导轨调整板	TRACK ADJUST LINK	2
31	10024558	导轨1组件	TRACK 1 ASM.	2
32	10000259	螺钉 M5×12	SCREW M5×12	6
33	10008055	保持架组件	BEARING	4
34	10024556	导轨3	TRACK 3	2
35	10024559	导轨2组件	TRACK 2 ASM.	1
36	10001072	螺钉 15/64-28 L=11	SCREW 15/64-28 L=11	4
37	10000109	垫圈 10.7×6.6×1	WASHER 10.7×6.6×1	4
38	10026787	左压脚定位板	RECEIVER POSITION PLATE	1
39	10000591	螺钉 3/16-28 L=9	SCREW 3/16-28 L=9	2
40	10001332	气缸组件	CYLINDER ASM.	1

序号	物料号	名称	DESCRIPTION	数量
41	10001321	气缸固定架	TURN CYLINDER BRACKET	1
42	10001330	铰链螺钉 D=4.6 H=7.3	HINGE SCREW D=4.6 H=7.3	1
43	10001331	送料气缸接头	CYLINDER KNUCKLE	1
44	10001327	传动齿条	INVERTING LAC	1
45	10013666	螺钉 1/8-44 L=12	SCREW 1/8-44 L=12	4
46	10026786	左压脚	RECEIVER PLATE LEFT	1
47	10004670	垫圈 8×4.5×0.8	WASHER 8×4.5×0.8	2
48	10000264	螺钉 11/64-40 L=8.5	SCREW 11/64-40 L=8.5	2
49	10014255	螺钉 3/32-56 L=5.5	SCREW 3/32-56 L=5.5	1
50	10003123	垫圈 2.5	WASHER 2.5	1
51	10026143	轴承	BEARING	2
52	10025851	压块组件	INTERMEDIATE PRESSER BASE	1
53	10001322	螺钉 9/64-40 L=7	SCREW 9/64-40 L=7	2
54	10001326	齿轮传动轴	TURN AROUND CRANK SHAFT	1
55	10001323	转动轴座	TURN AROUND CRANK BEARING	1
56	10009653	开口挡圈 4	E-RING 4	1
57	10001325	左压料板	WALKING FOOT LEFT	1
58	10001329	挡块	COMPENSATING FOOT	2
59	10001324	右压料板	WALKING FOOT RIGHT	1
60	10010643	螺钉 9/64-40 L=6	SCREW 9/64-40 L=6	2
61	10000051	垫圈 8×3.7×1	WASHER 8×3.7×1	2
62	10010668	螺钉 11/64-40 L=7.8	SCREW 11/64-40 L=7.8	4
63	10000493	垫圈 8.4×4.8×0.8	WASHER 8.4×4.8×0.8	4
64	10026788	右压脚	RECEIVER PLATE RIGHT	1
65	10005122	螺钉 M6×10	SCREW M6×10	2
66	10000109	垫圈 10.7×6.6×1	WASHER 10.7×6.6×1	2
67	10007835	送料板	LOWER PLATE	1

备注：此部件为5770-1306HD系列、5770-1507HD系列

### 13. 气动部件

#### PNEUMATIC COMPONENTS

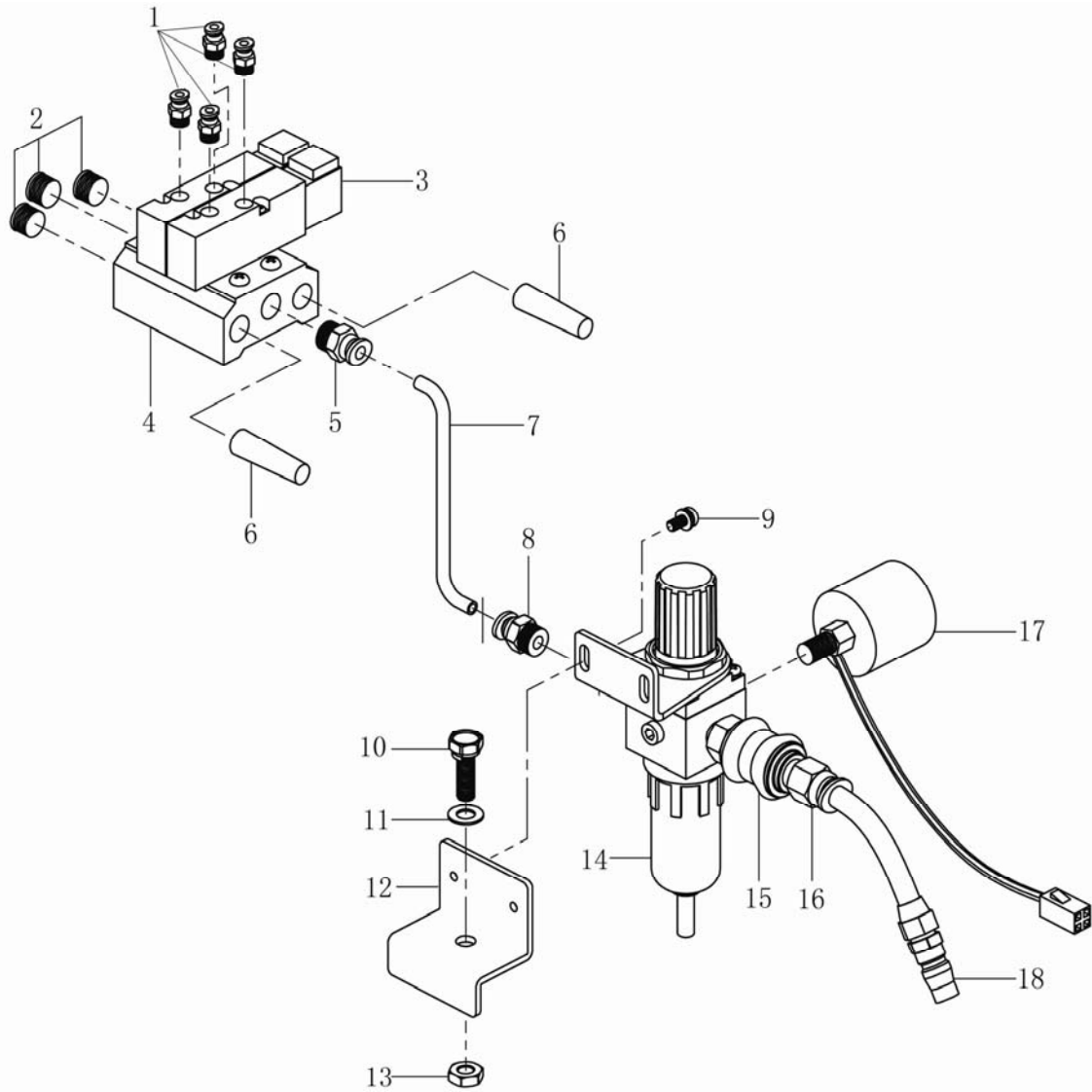


序号	物料号	名称	DESCRIPTION	数量
1	10023253	接头 APC4-01	CONTROLLER APC4-01	2
2	10002148	螺钉 M3×10	SCREW M3×10	2
3	10001490	气阀	SOLEND VALVE	1
4	10007583	气阀安装板	SOLEND VALVE INSTALL PLATE	1
5	10003724	接头 APC6-01	CONTROLLER APC6-01	1
6	10001548	消声器	ELIMINATE A MACHINE	2
7	10008150	气管 φ4×φ6	TUBE 4×6	1
8	10003733	接头 APC6-02	CONTROLLER APC6-02	1
9	10003883	螺钉 M5×10	SCREW M5×10	2
10	10002613	螺栓 M8×20	STUD BOLT M8×20	1
11	10003020	垫圈 8	WASHER 8	1
12	10001107	固定板	FILTER INSTALLING PLATE	1
13	10003194	螺母 M8	NUT M8	1
14	10007604	过滤减压阀	FILTER REGULATOR	1
15	10007534	手滑阀	HAND SLIDE VALVE	1
16	10003458	螺纹直通接头 APC10-02	SCREW CONTROLLER KEEP APC6-02	1
17	10007620	带压力开关的压力表	AIR PRESSUE SWITCH	1
18	10024399	接头 APC10-02	CONTROLLER APC10-02	1

备注：此部件为5770-1306HB系列、5770-1306HF系列、  
5770-1507HB系列、5770-1507HF系列

### 13. 气动部件

#### PNEUMATIC COMPONENTS

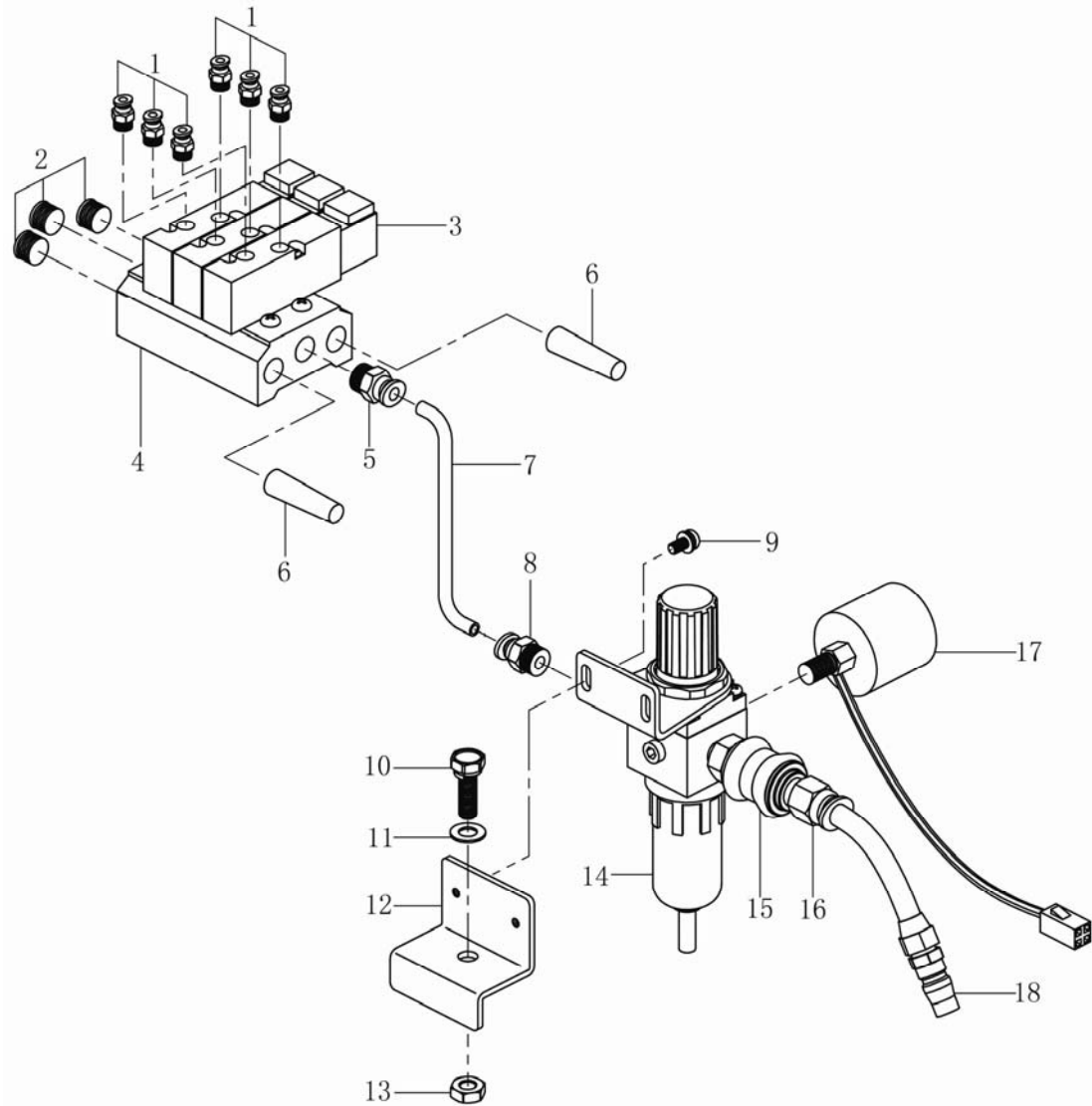


序号	物料号	名称	DESCRIPTION	数量
1	10023253	接头 APC4-01	CONTROLLER APC4-01	4
2	10001109	电磁阀座堵头	SOLEND VALVE BASE HEAD	3
3	10001490	气阀	SOLEND VALVE	2
4	10003720	电磁阀底座	SOLEND VALVE BASE	1
5	10003733	接头 APC6-02	CONTROLLER APC6-02	1
6	10003742	消声器	ELIMINATE A MACHINE	2
7	10008150	气管 $\phi 4 \times \phi 6$	TUBE 4x6	1
8	10003733	接头 APC6-02	CONTROLLER APC6-02	1
9	10003883	螺钉 M5x10	SCREW M5x10	2
10	10002613	螺栓 M8x20	STUD BOLT M8x20	1
11	10003020	垫圈 8	WASHER 8	1
12	10001107	固定板	FILTER INSTALLING PLATE	1
13	10003194	螺母 M8	NUT M8	1
14	10007604	过滤减压阀	FILTER REGULATOR	1
15	10007534	手滑阀	HAND SLIDE VALVE	1
16	10003458	螺纹直通接头 APC10-02	SCREW CONTROLLER KEEP APC6-02	1
17	10007620	带压力开关的压力表	AIR PRESSUE SWITCH	1
18	10024399	接头 APC10-02	CONTROLLER APC10-02	1

备注：此部件为5770-1306HC系列、5770-1507HC系列

### 13. 气动部件

#### PNEUMATIC COMPONENTS

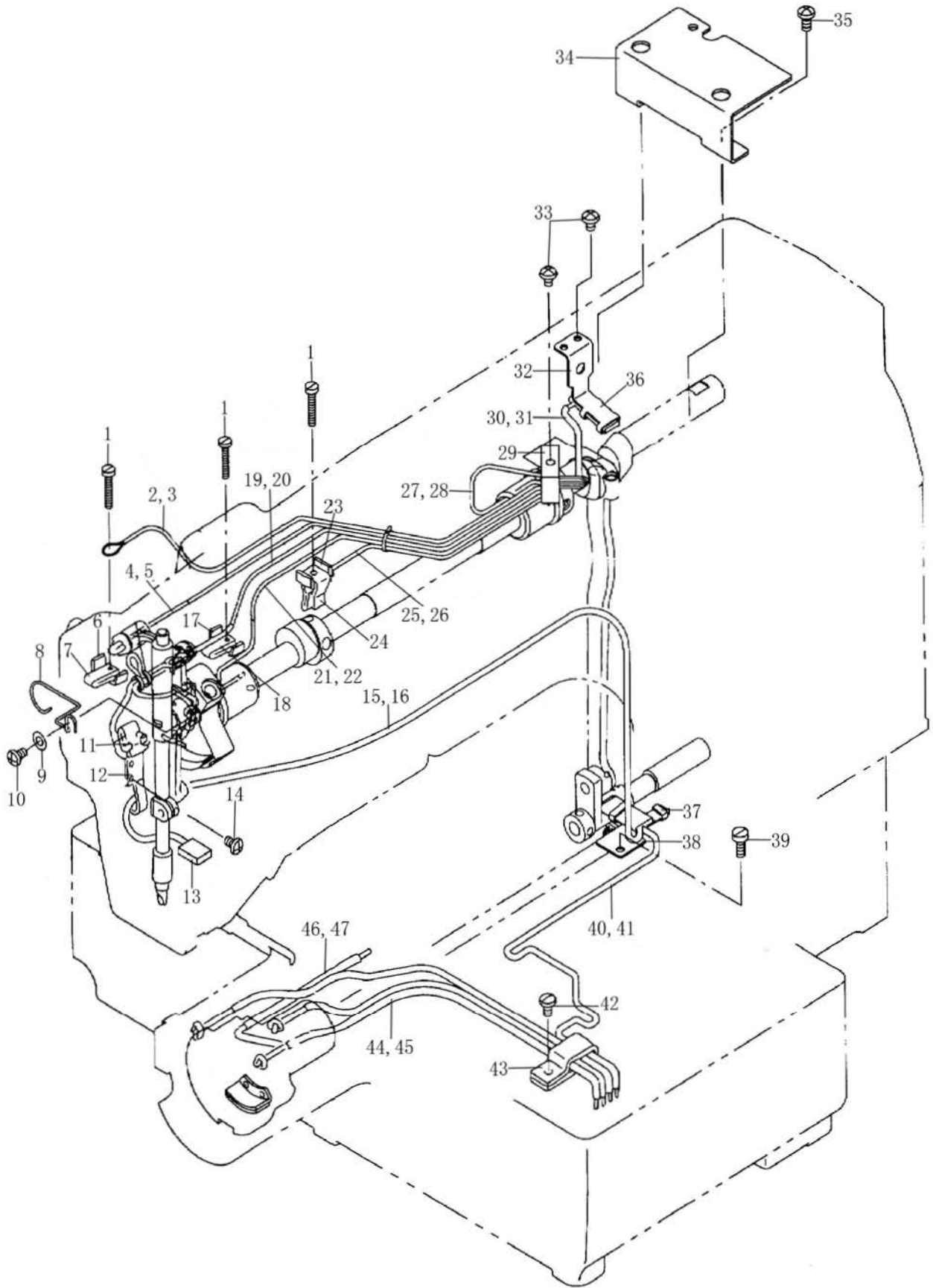


序号	物料号	名称	DESCRIPTION	数量
1	10023253	接头 APC4-01	CONTROLLER APC4-01	6
2	10001109	电磁阀座堵头	SOLEND VALVE BASE HEAD	3
3	10001490	气阀	SOLEND VALVE	3
4	10003720	电磁阀底座	SOLEND VALVE BASE	1
5	10003733	接头 APC6-02	CONTROLLER APC6-02	1
6	10003742	消声器	ELIMINATE A MACHINE	2
7	10008150	气管 $\phi 4 \times \phi 6$	TUBE 4x6	1
8	10003733	接头 APC6-02	CONTROLLER APC6-02	1
9	10003883	螺钉 M5×10	SCREW M5×10	2
10	10002613	螺栓 M8×20	STUD BOLT M8×20	1
11	10003020	垫圈 8	WASHER 8	1
12	10001107	固定板	FILTER INSTALLING PLATE	1
13	10003194	螺母 M8	NUT M8	1
14	10007604	过滤减压阀	FILTER REGULATOR	1
15	10007534	手滑阀	HAND SLIDE VALVE	1
16	10003458	螺纹直通接头 APC10-02	SCREW CONTROLLER KEEP APC6-02	1
17	10007620	带压力开关的压力表	AIR PRESSUE SWITCH	1
18	10024399	接头 APC10-02	CONTROLLER APC10-02	1

备注：此部件为5770-1306HD系列、5770-1507HD系列

# 14. 供油部件

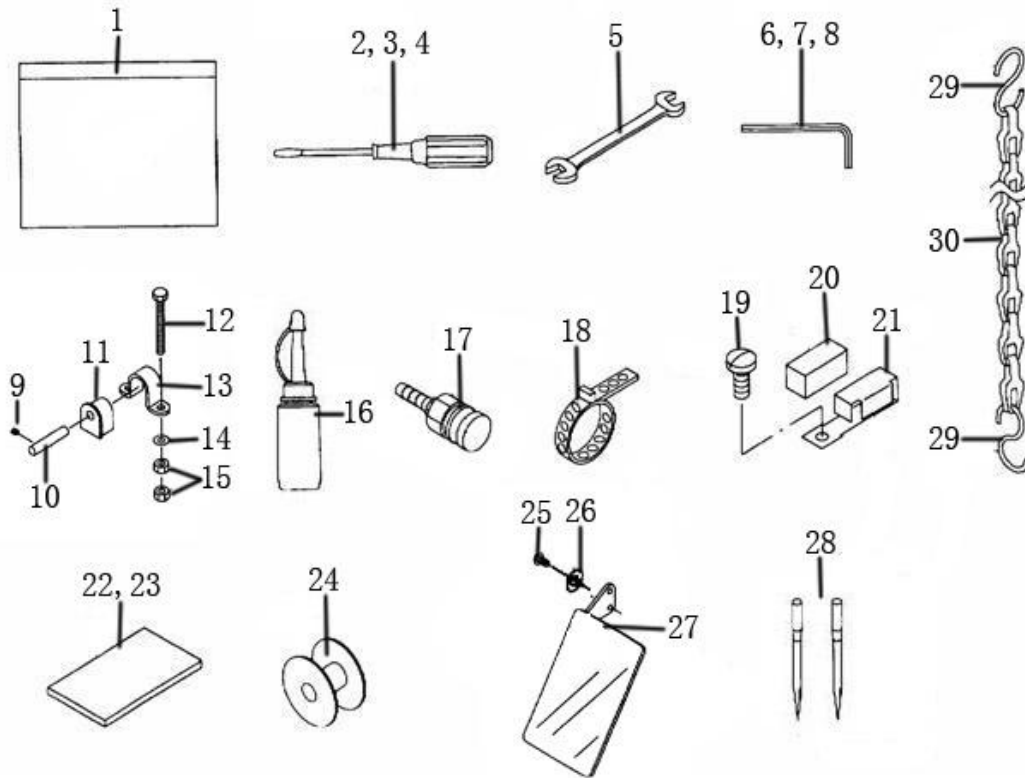
## LUBRICATION COMPONENTS



序号	物料号	名称	DESCRIPTION	数量
1	10011599	螺钉 9/64-40 L=20.5	SCREW 9/64-40 L=20.5	3
2	10008101	油线 $\phi 2$	OIL WICK $\phi 2$	1
3	10007800	油管 $\phi 3 \times \phi 5$	VINYL PIPE $\phi 3 \times \phi 5$	0.9
4	10008101	油线 $\phi 2$	OIL WICK $\phi 2$	0.3
5	10007800	油管 $\phi 3 \times \phi 5$	VINYL PIPE $\phi 3 \times \phi 5$	0.2
6	10011596	曲柄供油安装板	BALANCE LUBRICATING PLATE	1
7	10011782	毛毡	OIL FELT	1
8	10004243	面板部位油线保持架	OIL WICK HOLDER	1
9	10004670	垫片 4.5 $\times$ 8 $\times$ 0.8	WASHER 4.5 $\times$ 8 $\times$ 0.8	1
10	10011570	螺钉 9/64-40 L=7	SCREW 9/64-40 L=7	1
11	10011782	毛毡	OIL FELT	1
12	10004545	针杆连杆部位油毡架	OIL WICK HOLDER	1
13	10004550	机头回油毡	OIL FELT	1
14	10011570	螺钉 9/64-40 L=7	SCREW 9/64-40 L=7	2
15	10007805	油管 $\phi 6 \times \phi 8$	VINYL PIPE $\phi 6 \times \phi 8$	0.4
16	10004242	机头回油条毡	OIL FELT	1
17	10011596	曲柄供油安装板	BALANCE LUBRICATING PLATE	1
18	10011782	毛毡	OIL FELT	1
19	10008101	油线 $\phi 2$	OIL WICK $\phi 2$	1.3
20	10007800	油管 $\phi 3 \times \phi 5$	VINYL PIPE $\phi 3 \times \phi 5$	0.27
21	10008101	油线 $\phi 2$	OIL WICK $\phi 2$	1.2
22	10007800	油管 $\phi 3 \times \phi 5$	VINYL PIPE $\phi 3 \times \phi 5$	0.26
23	10011596	曲柄供油安装板	BALANCE LUBRICATING PLATE	1
24	10004544	上轴大连杆油毡	OIL FELT	1
25	10008101	油线 $\phi 2$	OIL WICK $\phi 2$	0.4
26	10007800	油管 $\phi 3 \times \phi 5$	VINYL PIPE $\phi 3 \times \phi 5$	0.2
27	10008101	油线 $\phi 2$	OIL WICK $\phi 2$	0.35
28	10007800	油管 $\phi 3 \times \phi 5$	VINYL PIPE $\phi 3 \times \phi 5$	0.12
29	10003358	大线夹	CORD HOLDER LARGE	1
30	10008101	油线 $\phi 2$	OIL WICK $\phi 2$	0.6
31	10007800	油管 $\phi 3 \times \phi 5$	VINYL PIPE $\phi 3 \times \phi 5$	0.21
32	10004245	上轴大连杆油毡架	CRANK ROD LUBRICATION PLATE	1
33	10000148	螺钉 3/16-28 L=6	SCREW 3/16-28 L=6	3
34	10004546	上轴电机挡油板	OIL PREVENT PLATE	1
35	10000591	螺钉 3/16-28 L=9	SCREW 3/16-28 L=9	2
36	10004544	上轴大连杆油毡	OIL FELT	1
37	10011637	毛毡	OIL FELT	1
38	10004547	下轴齿轮处油毡架	LUBRICATION PLATE	1
39	10010666	螺钉 9/64-40 L=14	SCREW 9/64-40 L=14	2
40	10008101	油线 $\phi 2$	OIL WICK $\phi 2$	0.65
41	10007800	油管 $\phi 3 \times \phi 5$	VINYL PIPE $\phi 3 \times \phi 5$	0.46
42	10010668	螺钉 11/64-40 L=7.8	SCREW 11/64-40 L=7.8	1
43	10003358	大线夹	CORD HOLDER LARGE	1
44	10008101	油线 $\phi 2$	OIL WICK $\phi 2$	0.55
45	10007800	油管 $\phi 3 \times \phi 5$	VINYL PIPE $\phi 3 \times \phi 5$	0.26
46	10007805	油管 $\phi 6 \times \phi 8$	VINYL PIPE $\phi 6 \times \phi 8$	0.13
47	10008101	油线 $\phi 2$	OIL WICK $\phi 2$	0.2

# 15. 附件组件

## ACCESSORIE PART COMPONENTS



序号	物料号	名称	DESCRIPTION	数量
1	1000404	机头罩	MACHINE HEAD COVER	1
2	10010994	大螺丝刀	SCREW DRIVER LARGE	1
3	10010995	中螺丝刀	SCREW DRIVER MIDDLE	1
4	10013185	小螺丝刀	SCREW DRIVER SMALL	1
5	10003369	呆扳手 8×10	WRENCH 8×10	1
6	10009685	内六角扳手 3	HEXAGONAL WRENCH 3	1
7	10009687	内六角扳手 4	HEXAGONAL WRENCH 4	1
8	10009689	内六角扳手 5	HEXAGONAL WRENCH 5	1
9	10000186	螺钉 11/64-40 L=4	SCREW 11/64-40 L=4	2
10	10011141	销	HINGE STUD	2
11	10011137	机头胶垫	HINGE RUBBER	2
12	10008260	螺钉 M5×50	SCREW M5×50	4
13	10011160	支承固定架	BED HINGE	2
14	10005244	垫圈 12×6.4×1.6	WASHER 12×6.4×1.6	8
15	10001146	螺母 M5	NUT M5	8
16	10005356	油壶	OIL CAN	1
17	10011199	上轴传感器外壳螺钉组件	SCREW ASM.	1
18	10002700	卷式结束带	HOSE BAND	1
19	10010018	螺钉 9/64-40 L=8	SCREW 9/64-40 L=8	1
20	10000396	硅油毡	FELT	1
21	10000398	硅油板	THREAD GUIDE	1
22	10002669	5770使用说明书	SPONGE	1
23	10007461	5770零件手册	PARTS LIST	1
24	10000649	梭心	BOBBIN	2
25	10011570	螺钉 11/64-40 L=7	SCREW 11/64-40 L=7	2
26	10011680	垫圈 9.7×4.6×0.8	WASHER 9.7×4.6×0.8	2
27	20004358	眼睛防护罩组件	ASFETY PLATE ASM.	1
28	10004896	机针	NEEDLE	4
29	10014203	链勾	SHAPED HOOK	4
30	10012456	链	CHAIN	2