

2J-8-1

**ROUND**



**CUTTING MACHINE**

**INSTRUCTION BOOK AND PARTS LIST**

# **OPERATION & MAINTENANCE DIRECTION**

---

## **Application**

Hand Held Electric Shears is a min cutter A miniature series motor is used to drive the blade mounted on the worm-gear, performing rotational cutting movements with a sharpening knife device. This machine can be used for cutting such materials as cotton, wool silk, synthetic fibre, leather, paper, etc. It is also particularly suitable for cutting single or several pieces of cloths and cutting out of design sample.

## **Operation & Maintenance**

### **OPERATION:**

Connect mate plug to the electric power outlet for same voltage as shown on name plate. Holding the housing to press switch handle, this machine will operate. and to release the switch handle, it will stop operate. The motor is double insulate, therefore it doesn't require grounding. it is equipped only with a 2-wire electric cord.

### **SHARPENING KNIFE**

Lightly press the sharpener push button, just enough for sharpening stone to grind the rotating knife so as to keep the knife sharp. therefore you can obtain clean and accurate cutting.

### **CHANGE KNIFE:**

In case of need to replace knife, turn the oil-ear outward and insert pin into the hole in knife to fix it, then loosen knife lock screw, the knife can be taken off.

### **CHANGE SHARPENING STONE:**

Remove the knife, then loose guide screw to take out sharpening mechanism. unscrewing sharpening stone lock screw replace sharpening stone with new one. Remove compression spring by unscrewing push button. Replace sharpening mechanism into machine head, insert the guide screw through machine head, and into sharpening stone shaft, then replace the compression spring and the push button.

### **CHANGE ELECTRIC BRUSHES:**

After a long time operation, if the electric brush of the direction changer is found to be reduced to under 4mm due to wear, the brushes has to be replaced with new ones so as to avoid the brushes sliding out or the brush spring directly wearing off the direction changer to replace the housing, it simply needs removing the housing and unscrew the brushes housing cap, replace old electric brushes with new ones.

### **LUBRICATION:**

When cutting the materials which are apt to adhere to knife, small

amount oil may be filled into the oiling hole and ear located on both sides of the machine head.to reduce cutting resistance.In case the machine is in regular use,grease worm and worm wheel each months.through brushing located in back side of machine head.grease motor ball bearings every 12 months.

## **CUTTING**

Knife of different shapes are available for selection to pectorm the cutting of marious kinds of materials.

6 sides knife-Suitable for cutting knit fabric synthetics.thin leather, plastic sheet and any slippery material.

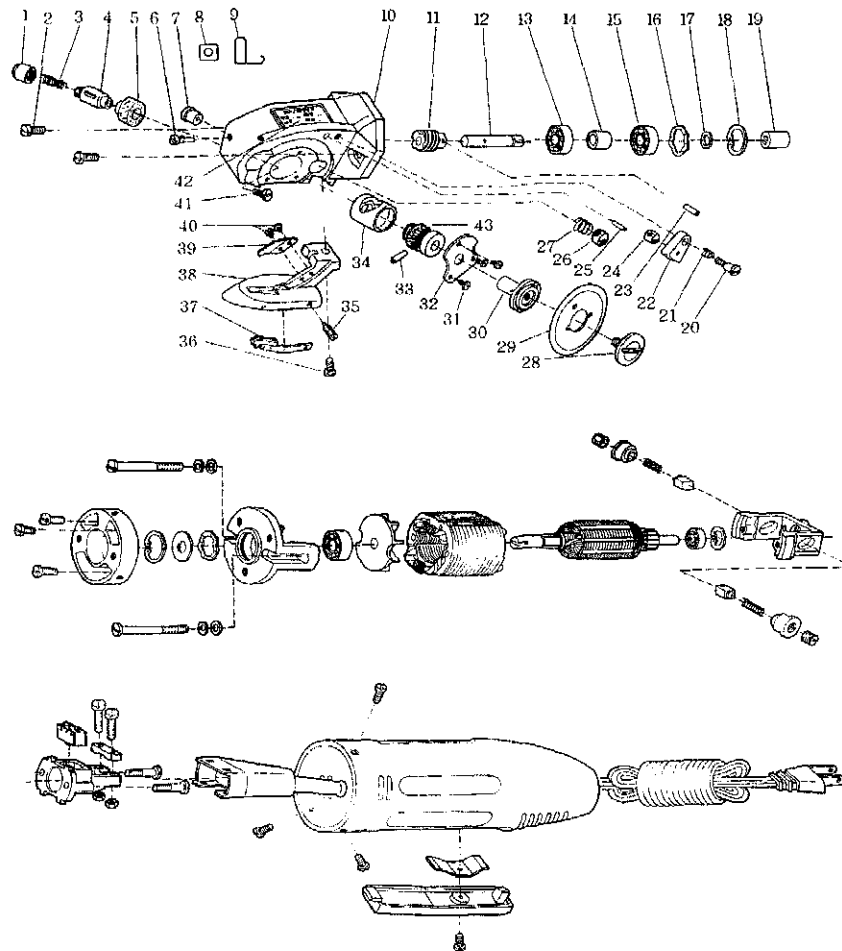
Round knife-suitable for cutting light to meduim heavy weight of all type of fabries and papers.

8 sides knife-suitable for cutting glass fibre and thick slippery materials.

## **List of parts**

Ref.No.	Description	Ref.No.	Description
1	Abrasive disc axle spring cap	23	pin 2X10
2	Screw.M4X8	24	Oil-ear reservoir felt
3	Abrasive disc axle spring	25	Pin A2X12
4	Abrasive disc axle	26	Knife oil felt
5	Abrasive disc	27	Knife oil felt spring
6	Abrasive disc axle position screw	28	Screw for fastening knife
7	Oi ling bush	29	Knife
8	Gulde plate	30	Worm wheel axle
9	Knife Guard	31	Screw M2.5X3
10	Machine head	32	Worm wheel baffle
11	Worm	33	Pin 2X14
12	Worm axle	34	Worm wheel bush
13	Bearing 60026	35	Fixed screw for counter bland
14	Spearate ring of worm bearing	36	Screw M4X10
15	Bearing 60026	37	Counter bland
16	Wavey spring washer	38	Knife bracket
17	Retaining ring 5	39	Guide plate
18	Retaining ring 19	40	Screw M2.5X2
19	Coupling ring	41	Abrasive disc axle screw
20	Oil-ear axle screw	42	Label
21	Oil-ear spring	43	Worm wheel
22	Oil-ear		

## Three dimensional assembly picture



### Technical Specification

Cutting Capacity	8mm
Rated Power	45W
Rated Voltage (single phase)	AC110/220V
Net Weight	1kg