

**Parts Checker For Compact Single
Head Embroidery Machine**

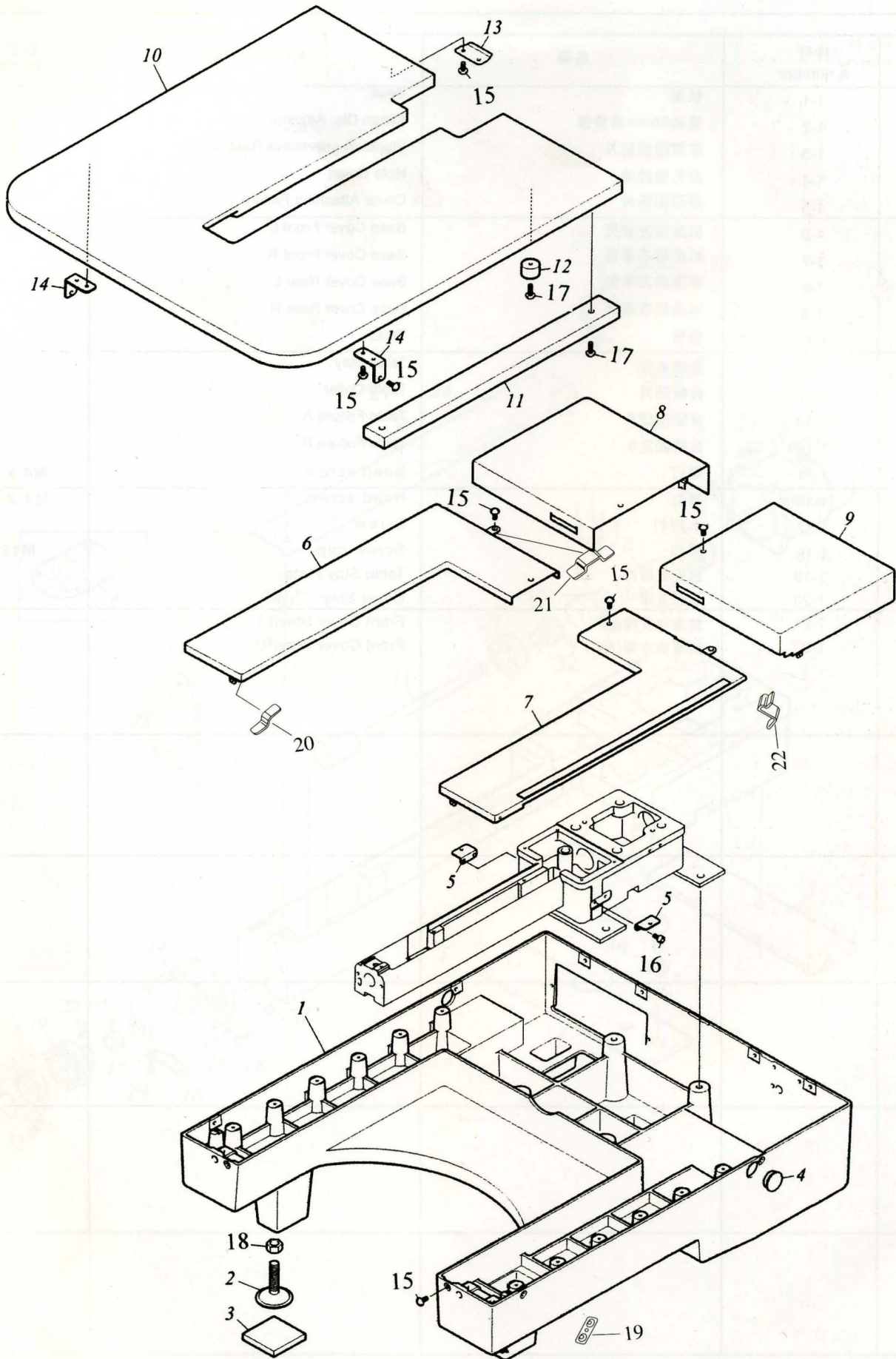
**台式多功能
电脑绣花机零件图册**

CONTENTS

CONTENTS

1 台板及防护盖板	1
Table guard cover	
2 旋梭箱部位	3
Rotary hook base	
3 剪线部位	5
Trimming part	
4 机头部位	7
Arm	
5 针杆驱动部位	9
Needle bar driving parts	
6 勾线部位	11
Upper thread hook	
7 换色部位	13
Color Change System	
8 针杆架 (1)	15
Needle Case (1)	
9 针杆架 (2)	17
Needle Case (2)	
10 X向驱动部位(1)	19
X-Axis Drive System (1)	
11 X向驱动部位(2)	21
X-Axis Drive System (2)	
12 Y向驱动部位	23
Y-Axis Drive System	
13 夹线器部位	25
Thread Tension Base	
14 线架部位	27
Thread Stand	
15 自动绕线装置	29
Bobbin Winder	
16 电气部位	31
Electrical Parts	
17 电源箱	33
Power Supply Box	
18 电控部位	35
Operation Panel	

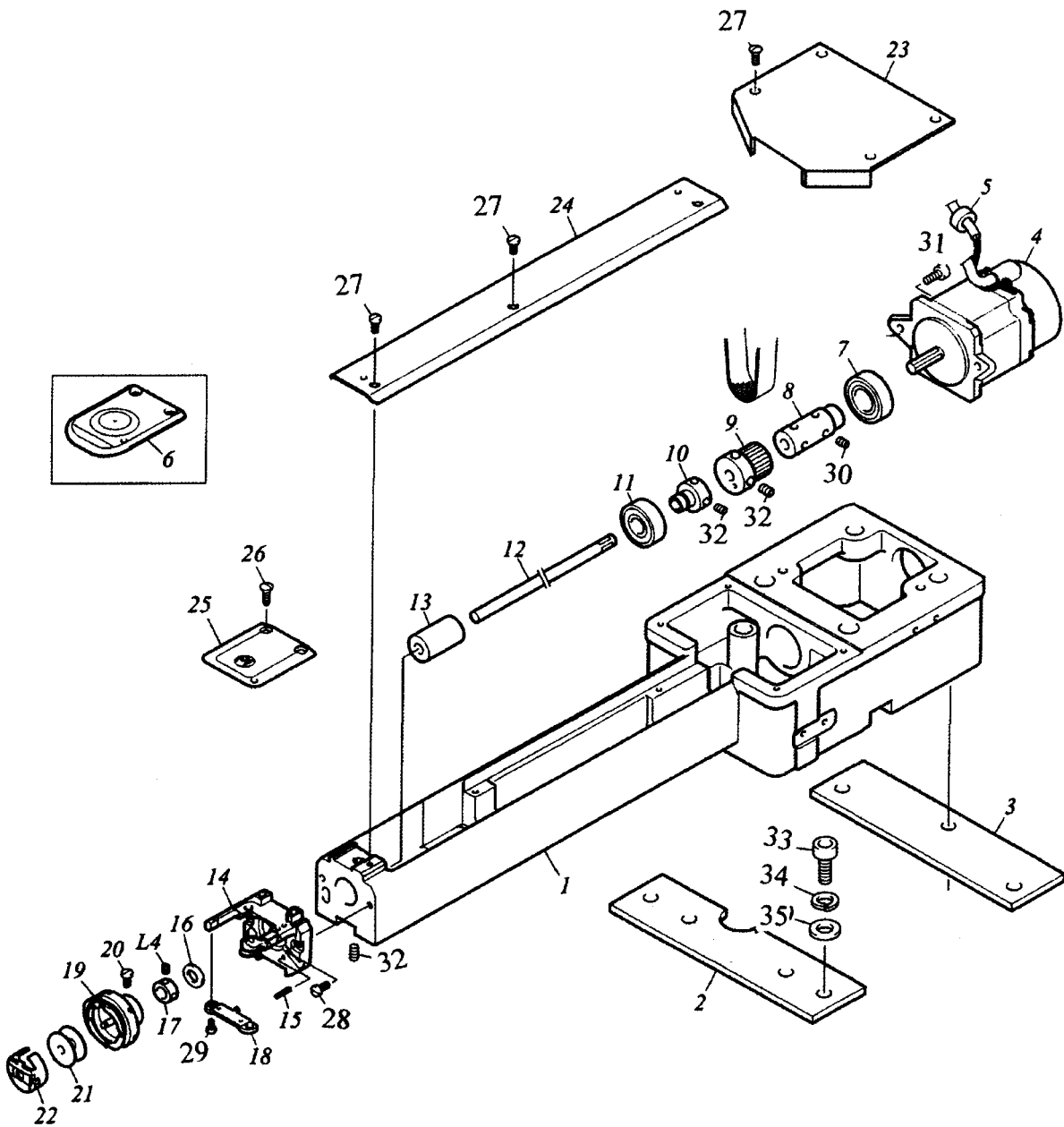
1. 台板及防护盖板 TABLE GUARD COVER



1. 台板及防护盖板 Table guard cover

序号 NO.	件号 A number	名称	PARTS NAME	备注 Remark
1	1-1	机座	Base	
2	1-2	直径55mm调整器	55mm Dia. Adjuster	
3	1-3	防震橡胶垫片	Vibration-preventive Rubber (H)	
4	1-4	封孔橡胶盖	Hole Cover	
5	1-5	罩壳固定片	Cover Attaching Fixture	
6	1-6	机座前左罩壳	Base Cover Front L	
7	1-7	机座前右罩壳	Base Cover Front R	
8	1-8	机座后左罩壳	Base Cover Rear L	
9	1-9	机座后右罩壳	Base Cover Rear R	
10	1-10	台板	Table	
11	1-11	台板支撑	Table Stay	
12	1-12	台板垫片	Table Collar	
13	1-13	台板固定A	Table Fixture A	
14	1-14	台板固定B	Table Fixture B	
15	1-15	螺钉	Head screw	M4 x 5
16	1-16	螺钉	Head screw	M4 X 8
17	1-17	木螺钉	Screw	
18	1-18	螺帽	Screw cap	M12
19	1-19	台板支撑片	Table Stay Plate	
20	1-20	罩壳支撑	Cover Stay	
21	1-21	前罩壳支撑(L)	Front Cover Stay(L)	
22	1-22	前罩壳支撑(R)	Front Cover Stay(R)	

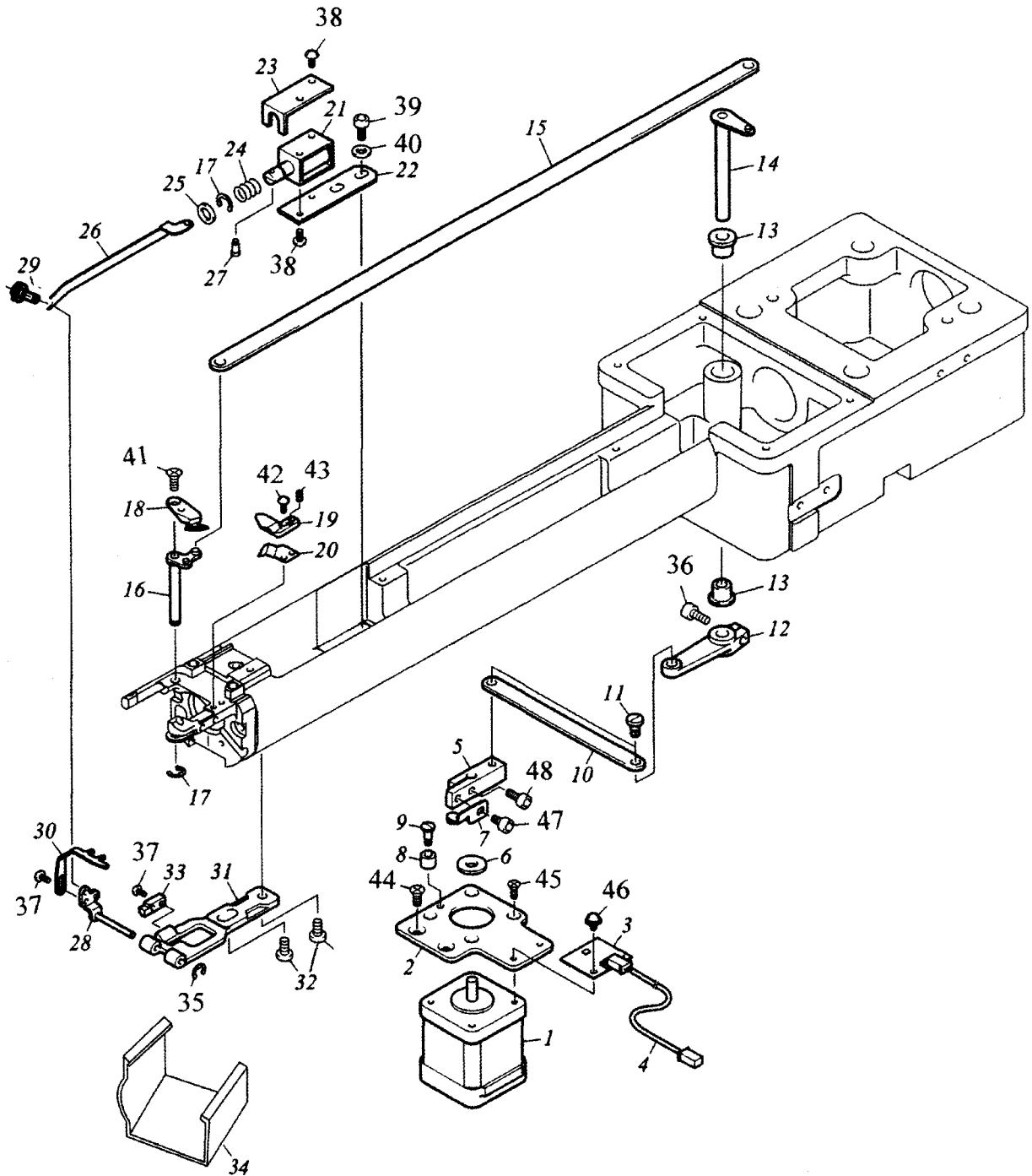
2. 旋梭箱部位 ROTARY HOOK BASE



2. 旋梭箱部位 Rotary hook base

序号 No.	件号 A number	名称	PARTS NAME	备注 Remark
1	2-1	机床	Arm Bed	
2	2-2	机床支撑A	Bed Stay A	
3	2-3	机床支撑B	Bed Stay B	
4	2-4	伺服电机	Servo Motor	
5	2-5	垫圈	Toroidal Core	
6	2-6	针板	Needle Plate for tubular hoop only	Option
7	2-7	轴承	Ball Bearing	
8	2-8	下轴连接轴	Lower Shaft Joint	
9	2-9	下轴皮带轮	Lower Shaft Pulley	
10	2-10	轴承套A	Bearing Collar A	
11	2-11	轴承	Ball Bearing	
12	2-12	下轴	Lower Shaft	
13	2-13	旋梭轴套B	Rotary Hook Shaft Bushing B	
14	2-14	针板支撑架	Needle Plate Bracket	
15	2-15	弹簧销	Spring Pin	3P*12
16	2-16	旋梭轴垫块	Rotary Hook Shaft Spacer	
17	2-17	直径7.94mm轴套	7.94mm Dia. Collar	
18	2-18	旋梭支架	Rotary Hook Support	
19	2-19	旋梭	Rotary Hook	
20	2-20	旋梭固定螺钉	Rotary Hook Set Screw	
21	2-21	梭芯	Bobbin	
22	2-22	梭壳	Bobbin Case	
23	2-23	机床罩壳A	Bed Cover A	
24	2-24	机床罩壳	Bed Cover	
25	2-25	针板	Needle Plate for tubular and cap	
26	2-26	圆形沉头螺钉	Round countersunk	11/64" x 40
27	2-27	圆形沉头螺钉	Screw	9/64" x 40
28	2-28	螺钉	Screw	11/64" x 40
29	2-29	螺钉	Screw	9/64" x 40
30	2-30	内六角紧定螺钉	Hexagon socket screw	M4
31	2-31	螺钉	Screw	M5 X 20
32	2-32	内六角紧定螺钉	Hexagon socket screw	M5 X 6
33	2-33	螺钉	Screw	M12
34	2-34	弹簧垫片	Spring washer	
35	2-35	平垫片	washer	

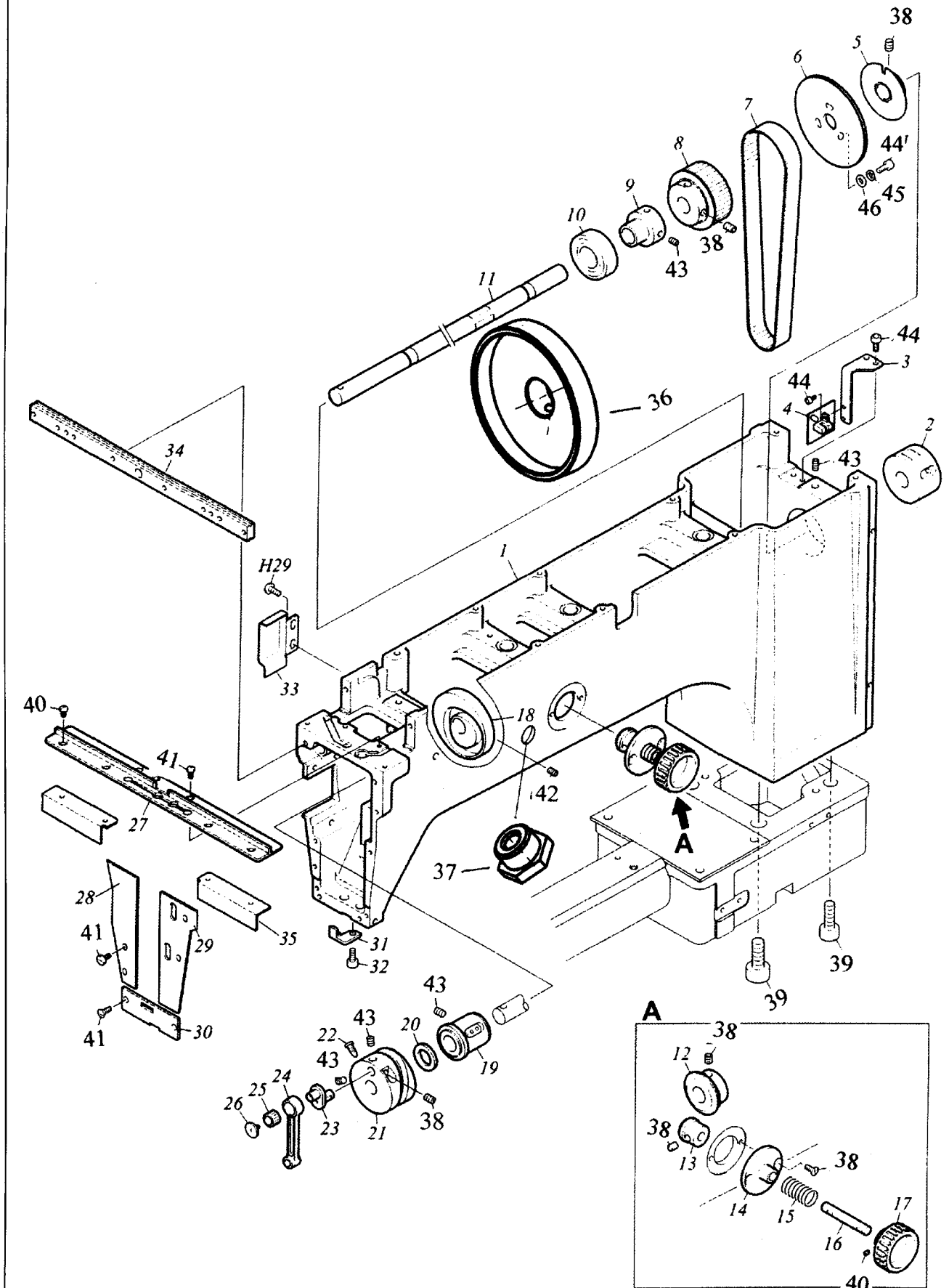
3.剪线部位 TRIMMING PART



3. 剪线部位 Trimming part

序号 No.	件号 A number	名称	PARTS NAME	备注 Remark
1	3-1	步进电机	Pulse (Stepping) Motor	
2	3-2	电机座	Motor Base	
3	3-3	电磁感应板A	Magnetic Sensor A Card	
4	3-4	伸缩块	Retractable Harness	
5	3-5	驱动杆	Drive Lever	
6	3-6	电机垫片	Motor Spacer	
7	3-7	驱动感应器	Drive Sensor	
8	3-8	垫片	Cushion	
9	3-9	垫片销	Cushion Pin	
10	3-10	连接杆	Connecting Rod	
11	3-11	连接杆销	Connecting Lever Pin	
12	3-12	驱动臂	Drive Arm	
13	3-13	含油轴承	Oiled Bearing	
14	3-14	剪线杆	Thread Trimming Lever	
15	3-15	剪线连接杆	Knife Connecting Plate	
16	3-16	动刀驱动杆	Movable Knife Drive Arm	
17	3-17	动力紧圈	Driving ring	
18	3-18	动刀	Movable Knife	
19	3-19	定刀	Fixed Knife	
20	3-20	压线弹片	Under Thread Presser	
21	3-21	扣线电磁铁	Picker Solenoid	
22	3-22	扣线电磁铁座	Picker Solenoid Base	
23	3-23	电磁铁罩	Solenoid Cover	
24	3-24	压缩弹簧	Compressed Spring	
25	3-25	针杆O圈	Needle Bar O-Ring	
26	3-26	连接板	Connecting Plate	
27	3-27	电磁铁销	Solenoid Pin	
28	3-28	扣线座	Picker Base	
29	3-29	螺钉	Head screw	
30	3-30	扣线器	Picker	
31	3-31	扣线器支架	Picker Bracket	
32	3-32	平头有槽螺钉	Flat Fillister Head Screw	
33	3-33	扣线制动器	Picker Stopper	
34	3-34	旋梭座罩壳	Rotary Hook Base Cover	
35	3-35	卡簧	Spring	
36	3-36	螺钉	Head screw	M5×14
37	3-37	螺钉	Head screw	M3
38	3-38	螺钉	Head screw	M3×5
39	3-39	螺钉	Head screw	
40	3-40	平垫片	Head screw	
41	3-41	螺钉	Head screw	
42	3-42	螺钉	Head screw	
43	3-43	内六角紧定螺钉	Head screw	
44	3-44	螺钉	Head screw	M3×6
45	3-45	螺钉	Head screw	M4×8
46	3-46	螺钉	Head screw	
47	3-47	螺钉	Head screw	M4×6
48	3-48	螺钉	Head screw	M4×12

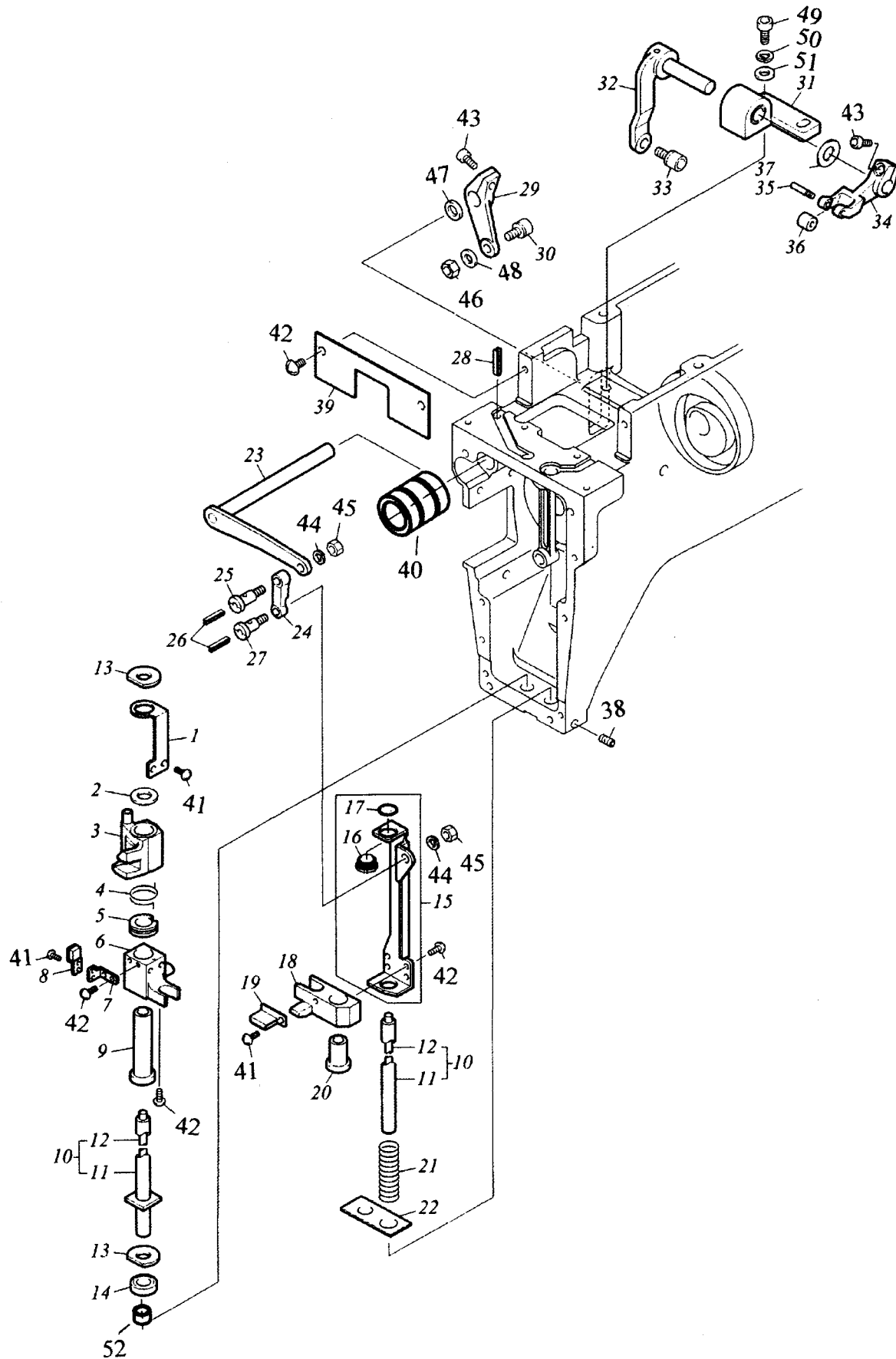
4. 机头部位 ARM



4. 机头部位 Arm

序号 No.	件号 A number	名称	PARTS NAME	备注 Remark
1	4-1	机头	Arm	
2	4-2	上轴后轴套	Upper Shaft Bushing, Rear	
3	4-3	旋转感应器	Rotation Sensor Base	
4	4-4	上轴感应器	Upper Shaft Sensor	
5	4-5	旋转检测板	Rotation Detecting Plate	
6	4-6	绕线盘	Thread Winding Disk	
7	4-7	步进带	Timing Belt	
8	4-8	上轴皮带轮	Upper Shaft Pulley	
9	4-9	轴承套B	Bearing Collar B	
10	4-10	轴承	Ball Bearing	
11	4-11	上轴	Upper Shaft	
12	4-12	伞齿轮(大)	Bevel Gear (Large)	
13	4-13	螺旋伞齿轮B	Spiral Bevel Gear B	
14	4-14	轴套	Handle Bushing	
15	4-15	手动旋转弹簧	Manual Rotating Lever Spring	
16	4-16	手动旋转轴	Manual Rotating Shaft	
17	4-17	手动操作开关	Manual Operating Handle	
18	4-18	压脚驱动凸轮	Presser Foot Drive Cam	
19	4-19	上轴前轴套	Upper Shaft Bushing, Front	
20	4-20	缓压垫片	Quenched Spacer	
21	4-21	挑线杆驱动凸轮	Take-up Lever Drive Cam	
22	4-22	凸轮固定螺丝	Cam Set Screw	
23	4-23	90度曲柄	90-degree Crank	
24	4-24	连接杆	Connecting Rod	
25	4-25	滚针	Needle Cage	
26	4-26	右沉头螺丝	Right Countersunk Head Screw	
27	4-27	挑线杆导轨	Take-up Lever Guide Rail	
28	4-28	机头左前罩壳	Arm Front Cover L	
29	4-29	机头右前罩壳	Arm Front Cover R	
30	4-30	机头导板	Arm Guide Plate	
31	4-31	定位板	Positioning Plate	
32	4-32	内六角圆柱头螺丝	Hexagon Socket Head Cap Screw	
33	4-33	机头侧罩壳	Arm Side Cover	
34	4-34	导轨	Case Linear	
35	4-35	挑线导架支撑板(左、右)		
36	4-36	刻度盘	Dial	
37	4-37	放大镜	Magnifier	
38	4-38	螺钉	Head Screw	M6
39	4-39	螺钉	Head Screw	M12
40	4-40	螺钉	Head Screw	M3
41	4-41	螺钉	Head Screw	9/64 ¹¹ × 40
42	4-42	内六角紧定螺钉	Head Screw	M8
43	4-43	内六角紧定螺钉	Head Screw	M5
44	4-44	螺钉	Head Screw	M4
45	4-45	弹簧垫片	Spring Washer	
46	4-46	平垫片	Washer	

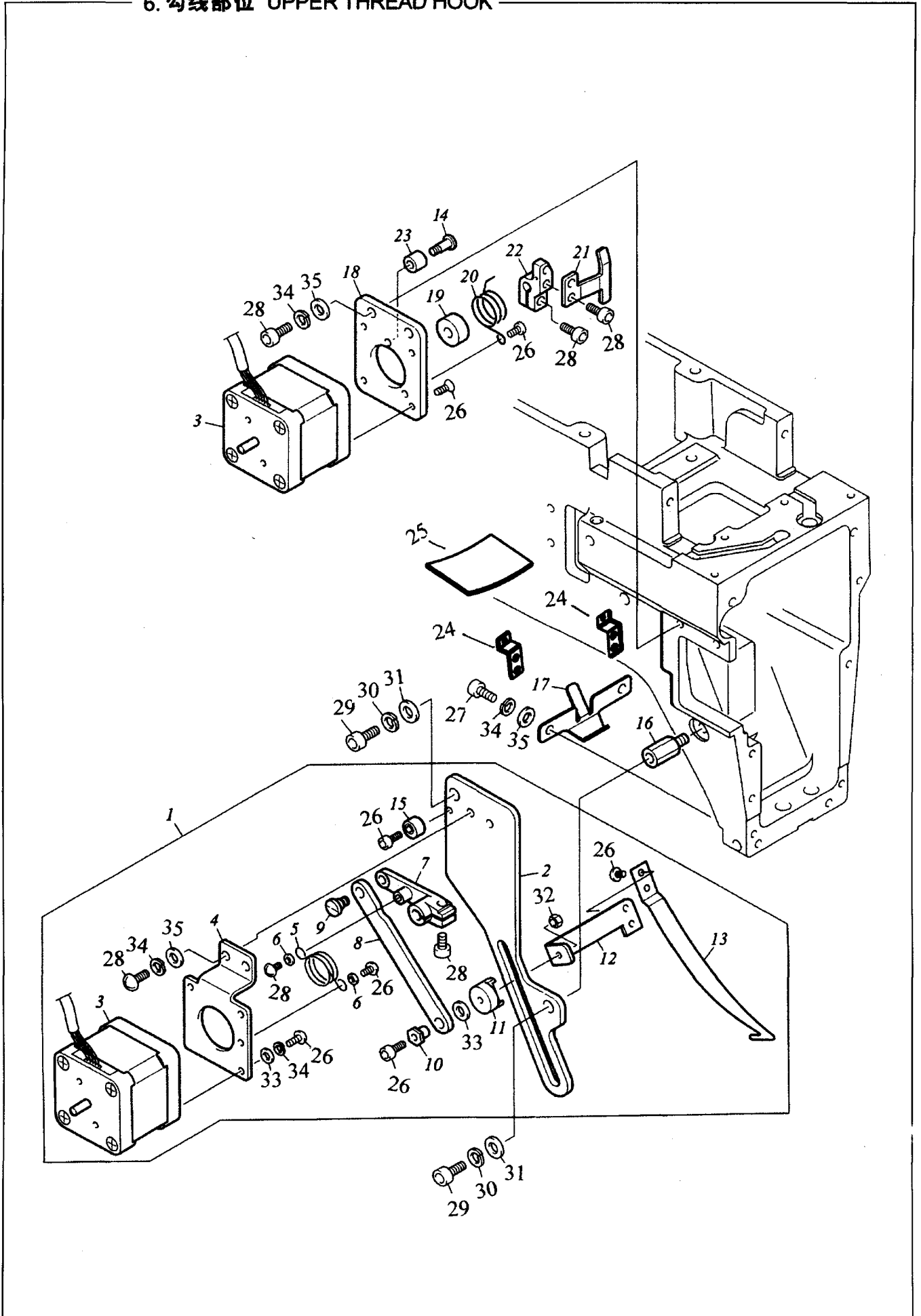
5. 针杆 驱动部位 NEEDLE BAR DRIVING PARTS



5. 针杆驱动部位 Needle bar driving parts

序号 No.	件号 A number	名称	PARTS NAME	备注 Remark
1	5-1	支撑架	Bushing Holder	
2	5-2	针杆滑块垫板	Needle Bar Reciprocator Spacer	
3	5-3	针杆滑块	Needle Bar Reciprocator	
4	5-4	伸缩弹簧	Return Spring	
5	5-5	弹簧座	Spring Cradle	
6	5-6	滑动块	Reciprocator Slide Block	
7	5-7	制动片一	Stopper Base	
8	5-8	制动片二	Stopper Base	
9	5-9	轴套	Bearing Case Bushing	
10	5-10	针杆驱动轴组件	Needle Bar Drive Shaft Set	
11	5-11	针杆驱动器	Needle Bar Drive Shaft	
12	5-12	针杆驱动油芯	Needle Bar Drive Shaft Wick	
13	5-13	针杆驱动轴毛毡A	Needle Bar Drive Shaft Felt A	
14	5-14	轴承垫	Bearing Case Collar	
15	5-15	驱动导板	Direct Drive Guide Plate	
16	5-16	支撑轴套A	Shaft Holder Bushing A	
17	5-17	同心止动圈	Type-C Concentric Stopper Ring	
18	5-18	压脚滑块	Presser Foot Reciprocator	
19	5-19	垫片支架	Cushion Bracket	
20	5-20	支撑轴套B	Shaft Holder Bushing B	
21	5-21	压脚导向弹簧	Presser Foot Guide Spring	
22	5-22	含油毛毡	Oil Fencing Felt	
23	5-23	驱动杆	Drive Lever	
24	5-24	连接块	Connecting Rod	
25	5-25	步进销A	Stepped Pin A	
26	5-26	油芯B	Wick B	L:16mm
27	5-27	步进销B	Stepped Pin B	
28	5-28	油芯	Wick	
29	5-29	凸轮驱动杆	Cam Lever	
30	5-30	凸轮固定螺钉	Cam Follower	
31	5-31	挑线杆轴承座	Take-up Lever Bearing Case	
32	5-32	挑线杆驱动杆	Take-up Lever Drive Lever (with Arm Pin)	
33	5-33	滚动螺丝	Cam Roller Set	
34	5-34	挑线杆驱动杆B	Take-up Lever Drive Lever B	
35	5-35	滚销	Roller Pin	
36	5-36	直径8mm轴承	8mm Dia. Roller	
37	5-37	调节垫片	Adjusting Washer	0.2mm Thick
38	5-38	螺钉	Head Screw	M5
39	5-39	导向板	Guide Plate	
40	5-23.1	挑线驱动杆套	Dving Shaff Cover	
41	5-41	螺钉	Head Screw	M3
42	5-42	螺钉	Head Screw	M4
43	5-43	螺钉	Head Screw	M4
44	5-44	弹簧垫片	Spring Washer	
45	5-45	螺帽	Screw Cap	M5
46	5-46	螺帽	Screw Cap	M4
47	5-47	垫片	Washer	
48	5-48	弹簧垫片	Spring Washer	
49	5-49	螺帽	Head Screw	M5 × 16
50	5-50	弹簧垫片	Spring Washer	
51	5-51	平垫片	Washer	
52	5-52	轴承套	Shaff Cover	

6. 勾线部位 UPPER THREAD HOOK

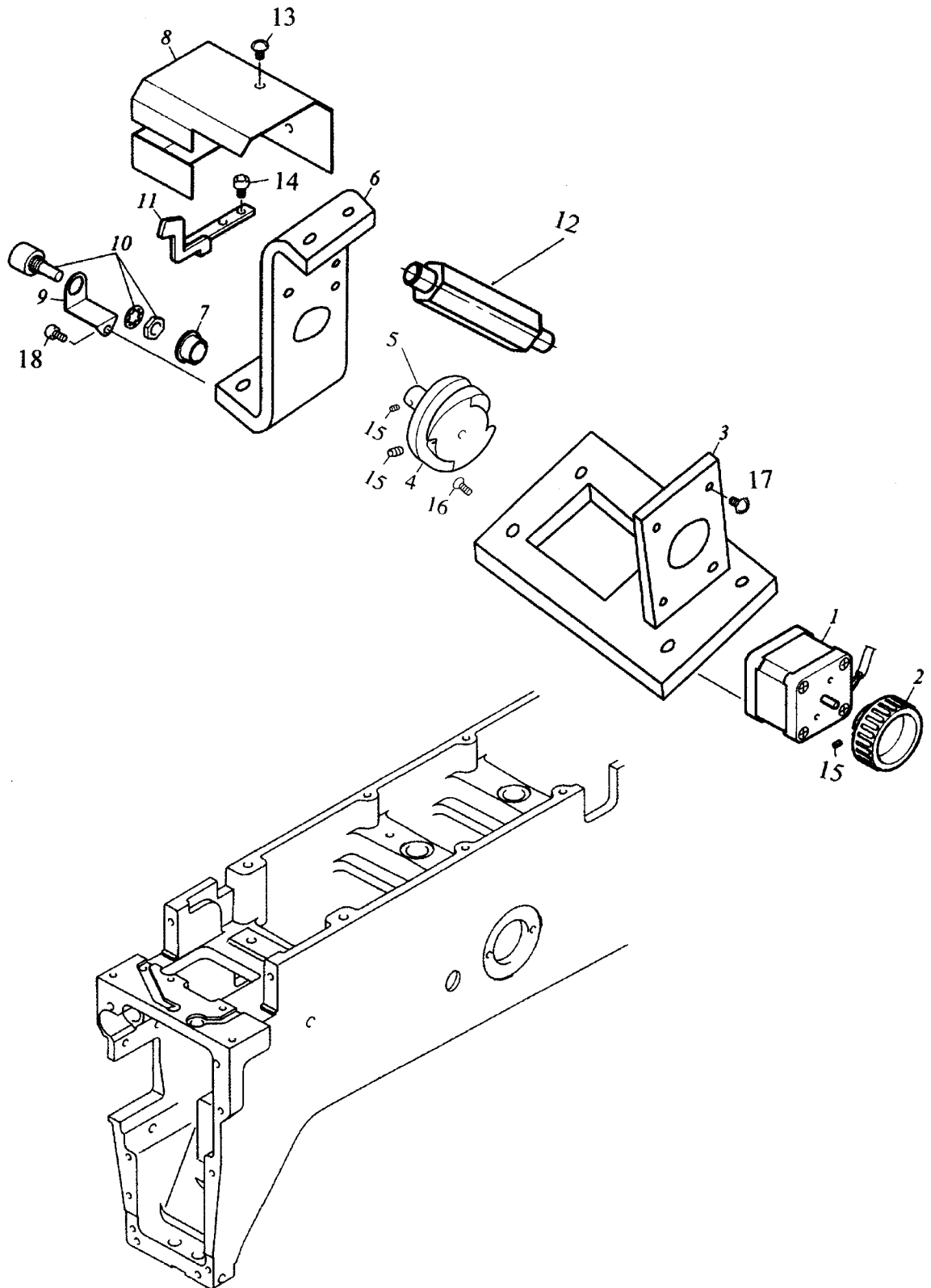


6. 勾线部位 Upper thread hook

序号 No.	件号 A number	名称	PARTS NAME	备注 Remark
1	6-1	整套组件	Assembly Base Set	
2	6-2	上线勾组件座	Upper Thread Hook Assembly Base	
3	6-3	步进电机	Pulse (Stepping) Motor	
4	6-4	步进电机座	Pulse Motor Base	
5	6-5	上线勾伸缩弹簧	Upper Thread Hook Return Spring	
6	6-6	弹簧支撑套	Spring Holder Collar	
7	6-7	上线勾驱动杆	Upper Thread Hook Lever	
8	6-8	连接杆	Connecting Rod Plate	
9	6-9	连接杆销	Connecting Lever Pin	
10	6-10	导向套	Guide Bushing	
11	6-11	定位套	Positioning Collar	
12	6-12	上线勾支架	Upper Thread Hook Bracket	
13	6-13	上线勾	Upper Thread Hook	
14	6-14	垫片销	Cushion Pin	
15	6-15	离心制动块	Eccentric Stopper	
16	6-16	座销	Base Stud	
17	6-17	勾线导板	Hook Guide	
18	6-18	步进电机座	Pulse Motor Base	
19	6-19	跳跃定位套	Jump Positioning Collar	
20	6-20	跳跃连杆伸缩弹簧	Jump Lever Return Spring	
21	6-21	跳跃连杆	Jump Lever	
22	6-22	跳跃连杆支撑	Jump Lever Holder	
23	6-23	垫片	Cushion	
24	6-24	塑料护板架	Plastic Protective Board Fixer	
25	6-25	塑料护板	Plastic Protective Board	
26	6-26	螺钉	Head Screw	M3
27	6-27	螺钉	Head Screw	9/64 ¹¹ × 40
28	6-28	螺钉	Head Screw	M4
29	6-29	螺钉	Head Screw	M5 × 10
30	6-30	弹簧垫片	Spring Washer	
31	6-31	平垫片	Washer	
32	6-32	螺帽	Screw Cap	M3
33	6-33	平垫片	Washer	
34	6-34	弹簧垫片	Spring Washer	
35	6-35	平垫片	Washer	

7. 换色部位

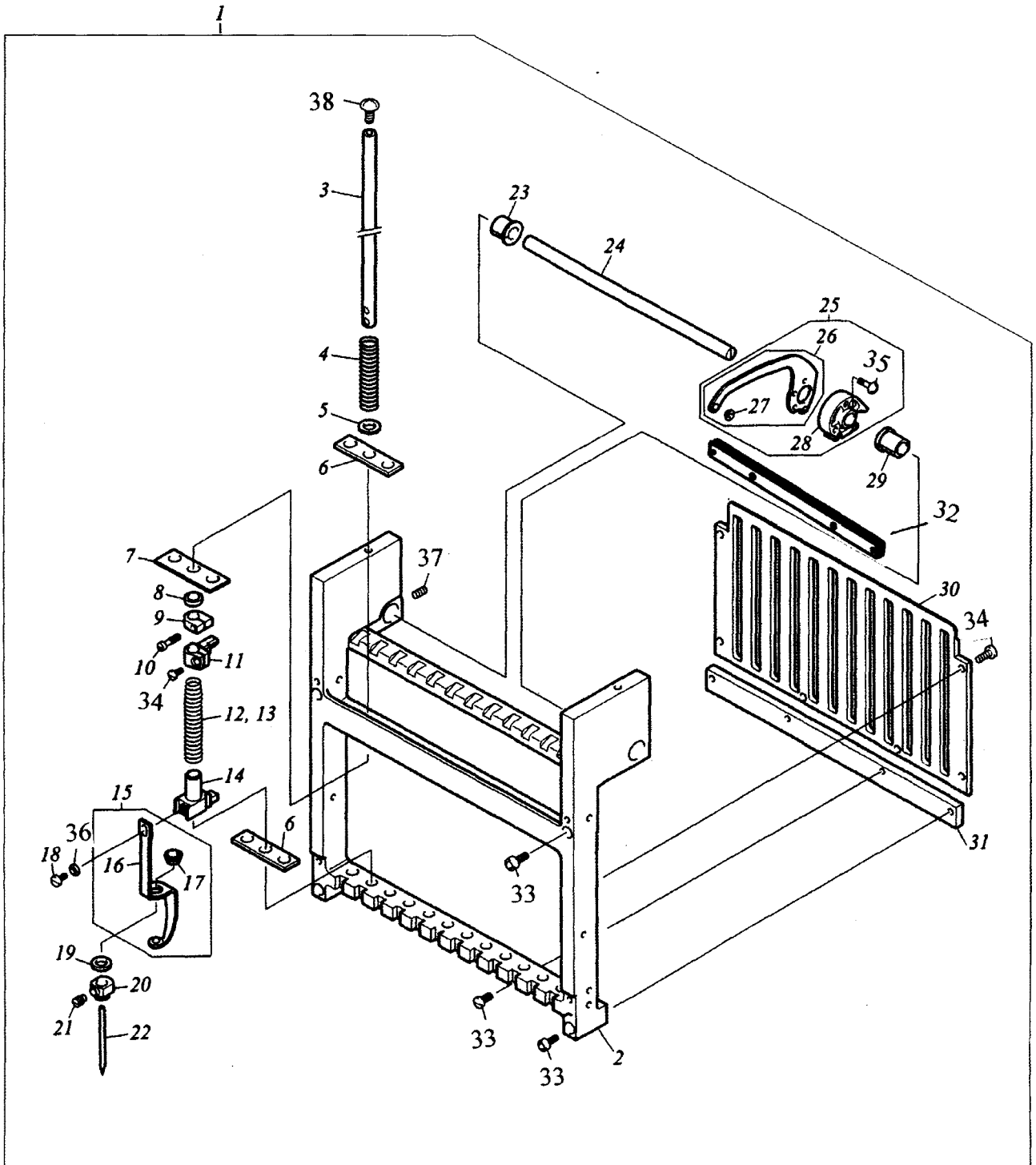
COLOR CHANGE SYSTEM



7. 换色部位 Color Change System

序号 No.	件号 A number	名称	PARTS NAME	备注 Remark
1	7-1	步进电机	Pulse (Stepping) Motor	
2	7-2	手动操作柄B	Manual Operation Handle B	
3	7-3	换色电机座	Color Change Motor Base	
4	7-4	换色凸轮	Change Cam	
5	7-5	换色轴	Color Change Shaft	
6	7-6	换色座	Change Base	
7	7-7	DU轴套	Flanged DU Bushing	
8	7-8	换色罩壳	Change Cover	
9	7-9	感应座	Sensor Base	
10	7-10	电位器	Potentiometer	
11	7-11	感应臂	Sensor Arm	
12	7-12	螺钉	Head Screw	M4 × 6
13	7-13	螺钉	Head Screw	
14	7-14	螺钉	Head Screw	M4 × 8
15	7-15	内六角紧定螺钉	Head Screw	
16	7-16	螺钉	Head Screw	
17	7-17	螺钉	Head Screw	
18	7-18	螺钉	Head Screw	

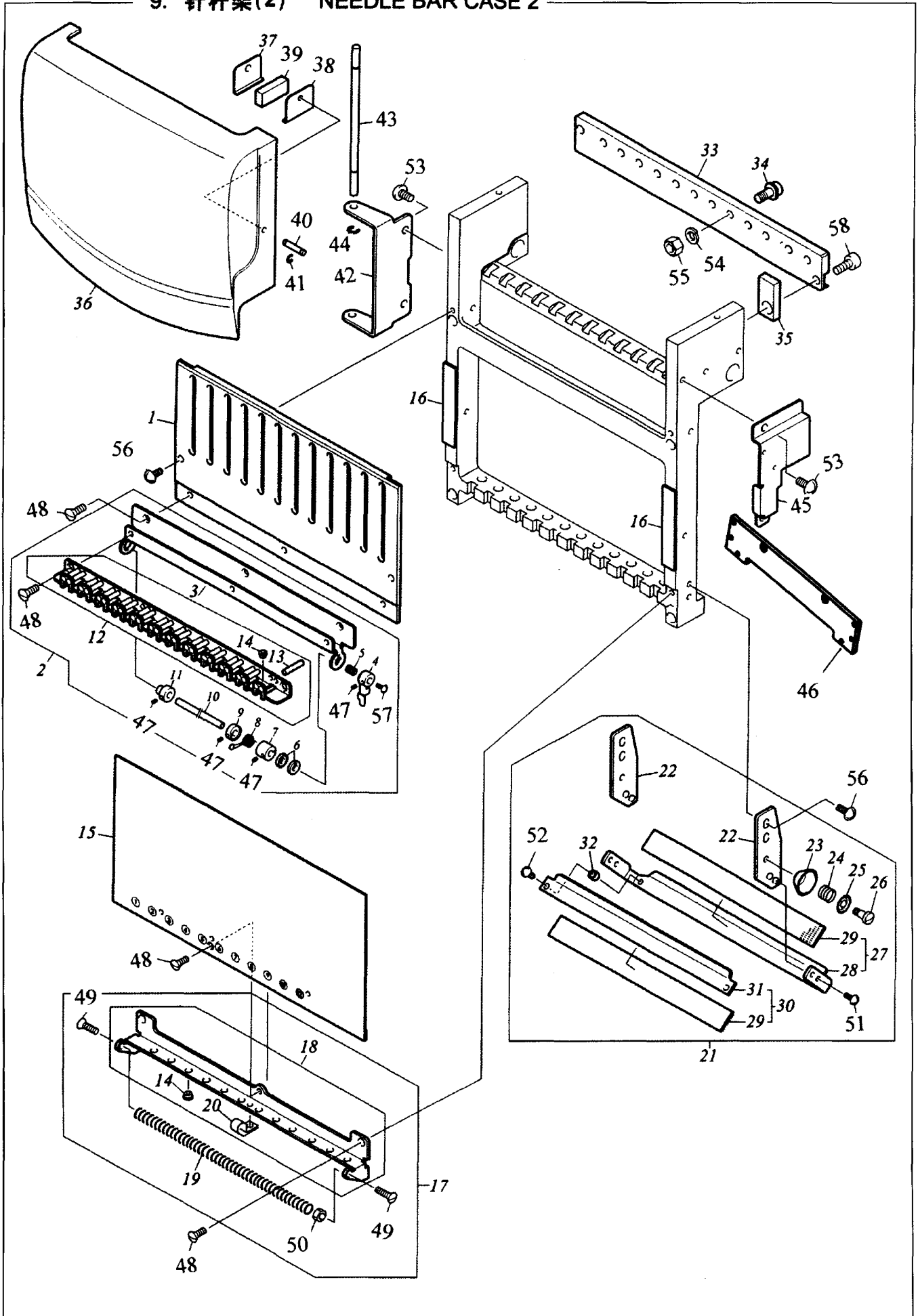
8. 针杆架(1) NEEDLE BAR CASE 1



8. 针杆架(1) Needle Case (1)

序号 No.	件号 A number	名称	PARTS NAME	备注 Remark
1	8-1	针杆座组件	Needle Bar Case Set	
2	8-2	针杆座	Needle Bar Case	
3	8-3	针杆	Needle Bar	
4	8-4	针杆支撑弹簧	Needle Bar Holder Spring	
5	8-5	弹簧垫片	Spring Shoe Washer	
6	8-6	毛毡垫片	Felt Packing	
7	8-7	橡胶垫片B	Cushion Rubber B	
8	8-8	垫片圈E	Cushion Ring E	
9	8-9	上死点制动块	Upper Dead Point Stopper	
10	8-10	开头平槽螺钉	Flat Fillister Head Screw	
11	8-11	针杆连接块	Needle Bar Connecting Stud	
12	8-12	压脚弹簧A	Presser Foot Spring A	
13	8-13	压脚弹簧B	Presser Foot Spring B (for Thick material)	
14	8-14	压脚连接块	Presser Foot Connecting Stud	
15	8-15	压脚组件	Presser Foot Set	
16	8-16	压脚	Presser Foot	
17	8-17	压脚套	Presser Foot Bushing	
18	8-18	压脚固定螺钉	Presser Foot Set Screw	
19	8-19	垫片圈A	Cushion Ring A	
20	8-20	针夹	Needle Clamp	
21	8-21	针夹螺钉	Needle Set Screw	
22	8-22	针	Needle (DBK572 #11NY)	
23	8-23	挑线杆定位套	Take-up Lever Positioning Bushing	
24	8-24	挑线轴承	Take-up Lever Shaft	
25	8-25	挑线杆组件	Roller Type Take-up Lever Set	
26	8-26	挑线杆	Take-up Lever	
27	8-27	导线块	Thread Guide	
28	8-28	挑线杆齿轮	Take-up Lever Boss	
29	8-29	挑线杆调节套	Take-up Lever Adjusting Bushing	
30	8-30	针杆导向板	Needle Bar Guide Rail	
31	8-31	下导轨	Case Rail, Lower	
32	8-32	上导轨	Upper Bur	
33	8-33	螺钉	Head Screw	M4
34	8-34	螺钉	Head Screw	
35	8-35	螺钉	Head Screw	M3
36	8-36	平垫片	Washer	
37	8-37	内六角紧定螺钉	Hexagon Socket Screw	
38	8-38	针杆螺钉	Screw	

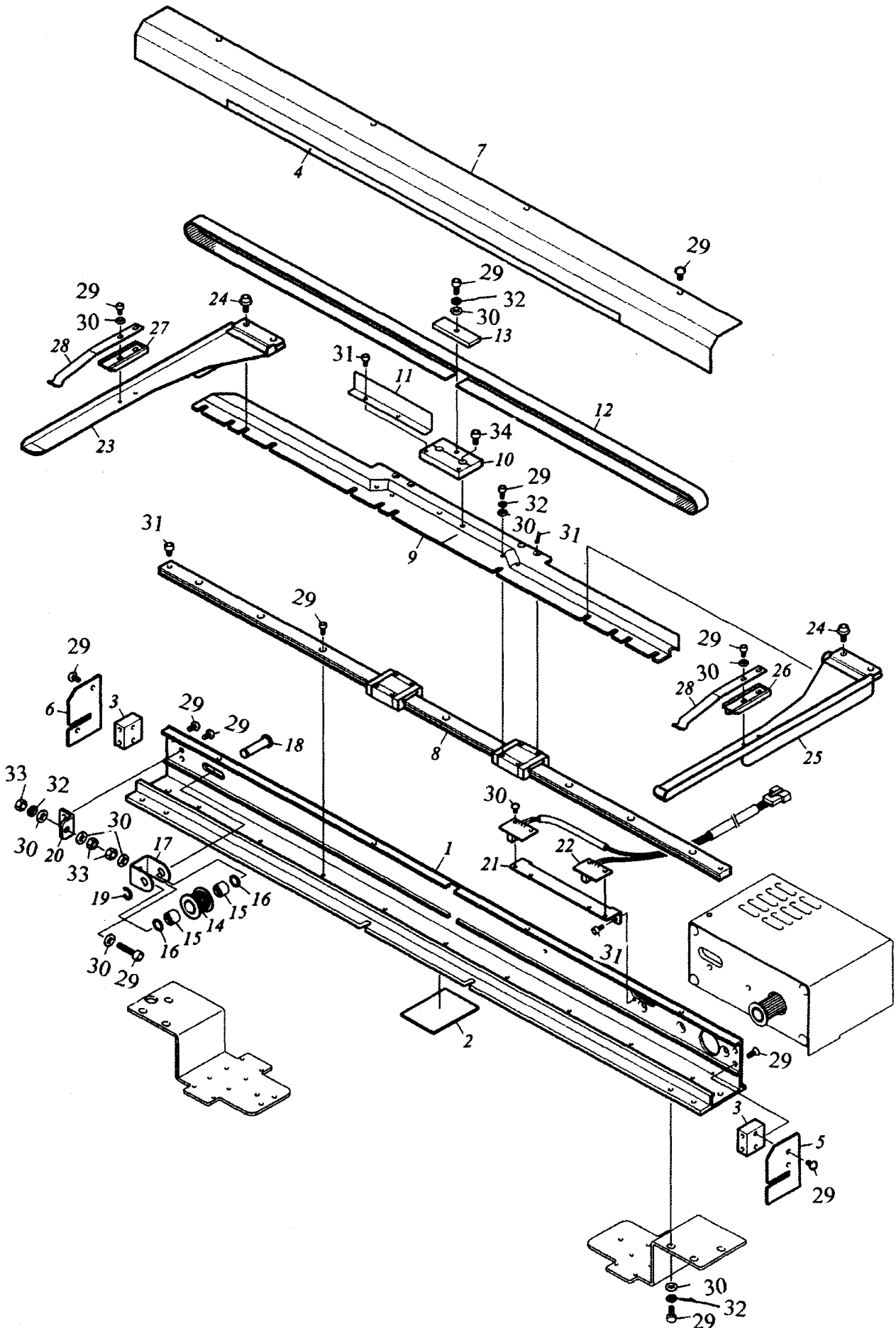
9. 针杆架(2) NEEDLE BAR CASE 2



9. 针杆架(2) Needle Case (2)

序号 No.	件号 A number	名称	PARTS NAME	备注 Remark
1	9-1	顶罩壳	Top Cover	
2	9-2	挑线弹簧	Thread Take-up Spring Attaching Base Set	
3	9-3	挑线弹簧座	Thread Take-up Spring Attaching Base	
4	9-4	伸缩杆组件	Retracting Lever Set	
5	9-5	压力弹簧	Push Spring	
6	9-6		Knurled Screw	
7	9-7	涨紧套	Tension Collar	
8	9-8	挑线弹簧	Thread Take-up Spring	
9	9-9	调节轴A	Stroke Adjuster A	
10	9-10	直径5mm轴	Smm Dia. Shaft	
11	9-11	轴套	Bushing	
12	9-12	滚形支线组件	Roller-type Large Thread Holder Set	
13	9-13	针块	Needle Roller	
14	9-14	导线套	Thread Guide	
15	9-15	面板	Face Plate	
16	9-16	磁铁橡胶垫	Magnet Rubber	
17	9-17	下过线组件	Lower Thread Guide Set	
18	9-18	下过线架	Lower Thread Guide	
19	9-19	勾线弹簧	Thread Hook Spring	
20	9-20	压力弹簧架	Spring Presser Bracket	
21	9-21	压线座组件	Thread Presser Base Set	
22	9-22	上线托架	Thread Holder Bracket	
23	9-23	挂线盘	Thread Suspender Disk	
24	9-24	挂线弹簧	Thread Suspender Spring	
25	9-25	挂线压簧块	Thread Suspender Spring Presser	
26	9-26	压线弹簧	Thread Suspender Attaching Screw	
27	9-27	压线座(带胶带)	Thread Presser Base (with Tape)	
28	9-28	压线座	Thread Presser Base	
29	9-29	毛毡	Velcro	
30	9-30	压线盖	Thread Presser Lid (with Tape)	
31	9-31	压线盖(带胶带)	Thread Presser Lid	
32	9-32	压线块	Thread Presser Spacer	
33	9-33	换色座	Change Roller Base	
34	9-34	凸轮滚销组件	Cam Roller Pin Set	
35	9-35	垫块	Space Block	
36	9-36	面板	Face plate	
37	9-37	上磁铁支撑	Magnet Holder, Upper	
38	9-38	下磁铁支撑	Magnet Holder, Lower	
39	9-39	磁铁	Magnet	
40	9-40	支撑轴	Holder Shaft	
41	9-41	卡簧	E-ring	
42	9-42	上面板支架	Face Plate Bracket	
43	9-43	面板连接轴	Face Plate Hinge Shaft	
44	9-44	卡簧	E-ring	
45	9-45	开关支架	Switch Bracket	
46	9-46	导向滚子座	Sfand	
47	9-47	内六角紧定螺钉	Hexayon Sockef Screw	
48	9-48	螺钉	Head Screw	
49	9-49	螺钉	Head Screw	

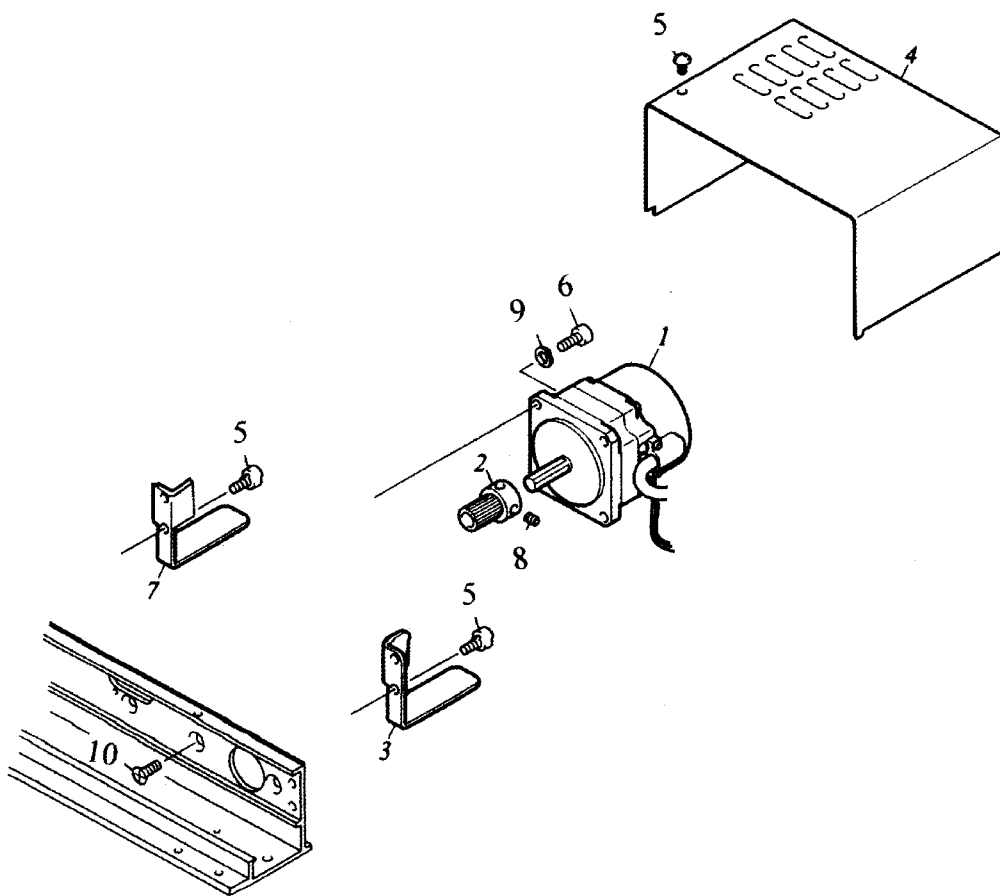
10. X向驱动部位(1) X-AXIS DRIVE SYSTEM 1



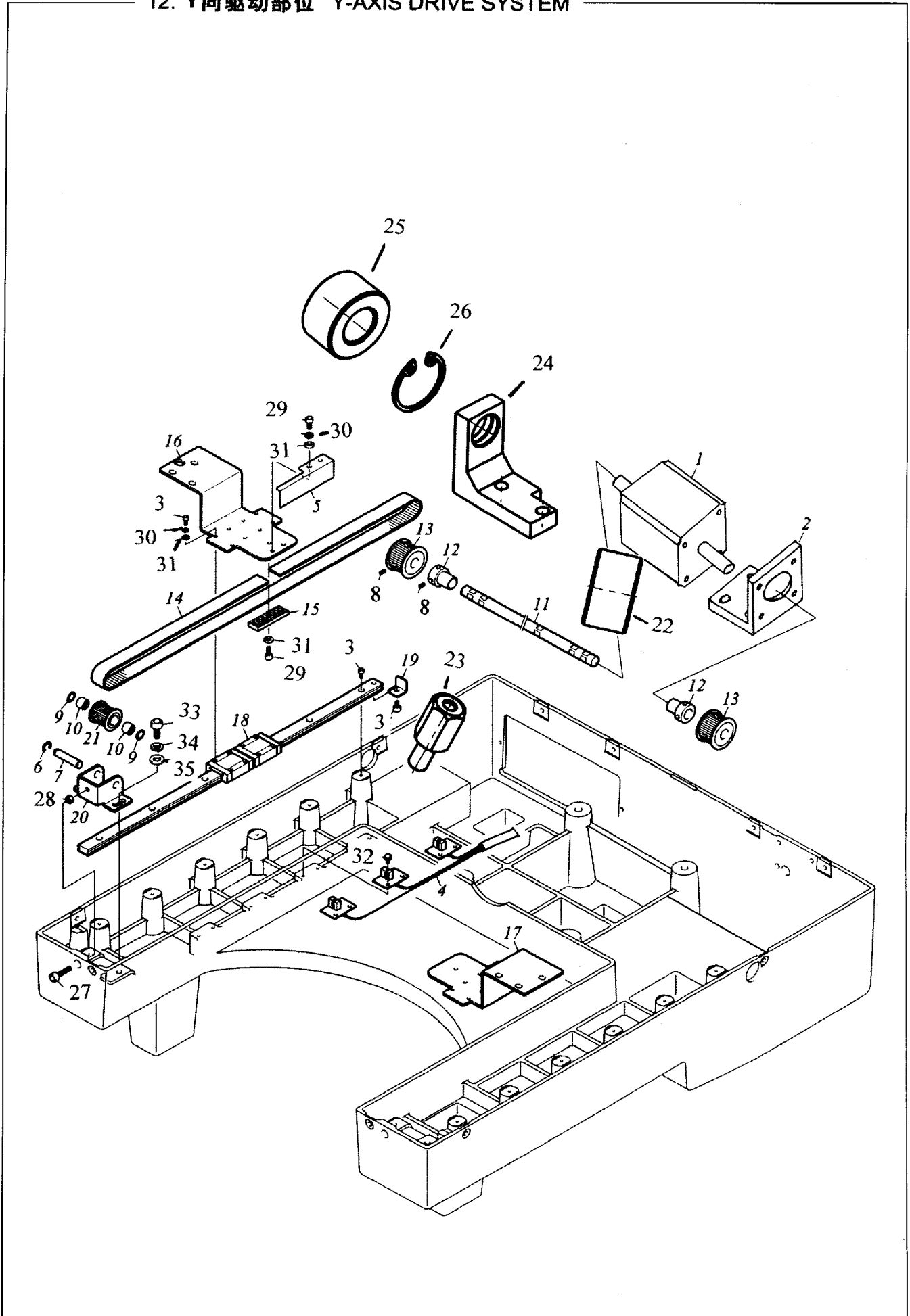
10. X向驱动部件(1) X-Axis Drive System (1)

序号 No.	件号 A number	名称	PARTS NAME	备注 Remark
1	10-1	X轴边框	X Sash	
2	10-2	毡座	Z-spec. Frame Felt	
3	10-3	底座	Base	
4	10-4	横向刻度	Traverse Scale	
5	10-5	侧面板R	Side Plate R	
6	10-6	侧面板L	Side Plate L	
7	10-7	X轴盖	X Cover	
8	10-8	X轴导轨	X Linear Way	
9	10-9	连接板	Joint Plate	
10	10-10	叠层板	Stack Plate	
11	10-11	检出板	Detecting Plate	
12	10-12	X轴驱动带	X Drive Belt	
13	10-13	驱动带档板	Belt Stopper	
14	10-14	X轴带轮	X Pulley	
15	10-15	滚针轴承	Needle Bearing	
16	10-16	垫片	Washer	
17	10-17	U形托架	U-shaped Bracket	
18	10-18	X轴销	X-axis Pin	
19	10-19	卡簧	E-ring	
20	10-20	涨紧支撑B	Tension Stay B	
21	10-21	开关附加板	Sensor Attaching Plate	
22	10-22	X轴限位开关	X Limit Sensor	
23	10-23	支撑座L	Holder Base L	
24	10-24	内六角法兰螺丝	Hexagon Socket Head Flange Screw	
25	10-25	支撑座R	Holder Base R	
26	10-26	定位板A	Positioning Plate A	
27	10-27	定位板B	Positioning Plate B	
28	10-28	压框弹簧B	Frame Presser Spring B	
29	10-29	螺钉	Head Screw	M4
30	10-30	平垫片	Washer	
31	10-31	螺钉	Head Screw	M3
32	10-32	弹簧垫片	Spring Washer	
33	10-33	螺帽	Screw Cap	M4
34	10-34	螺钉	Screw	

11. X向驱动部位(2) X-AXIS DRIVE SYSTEM 2



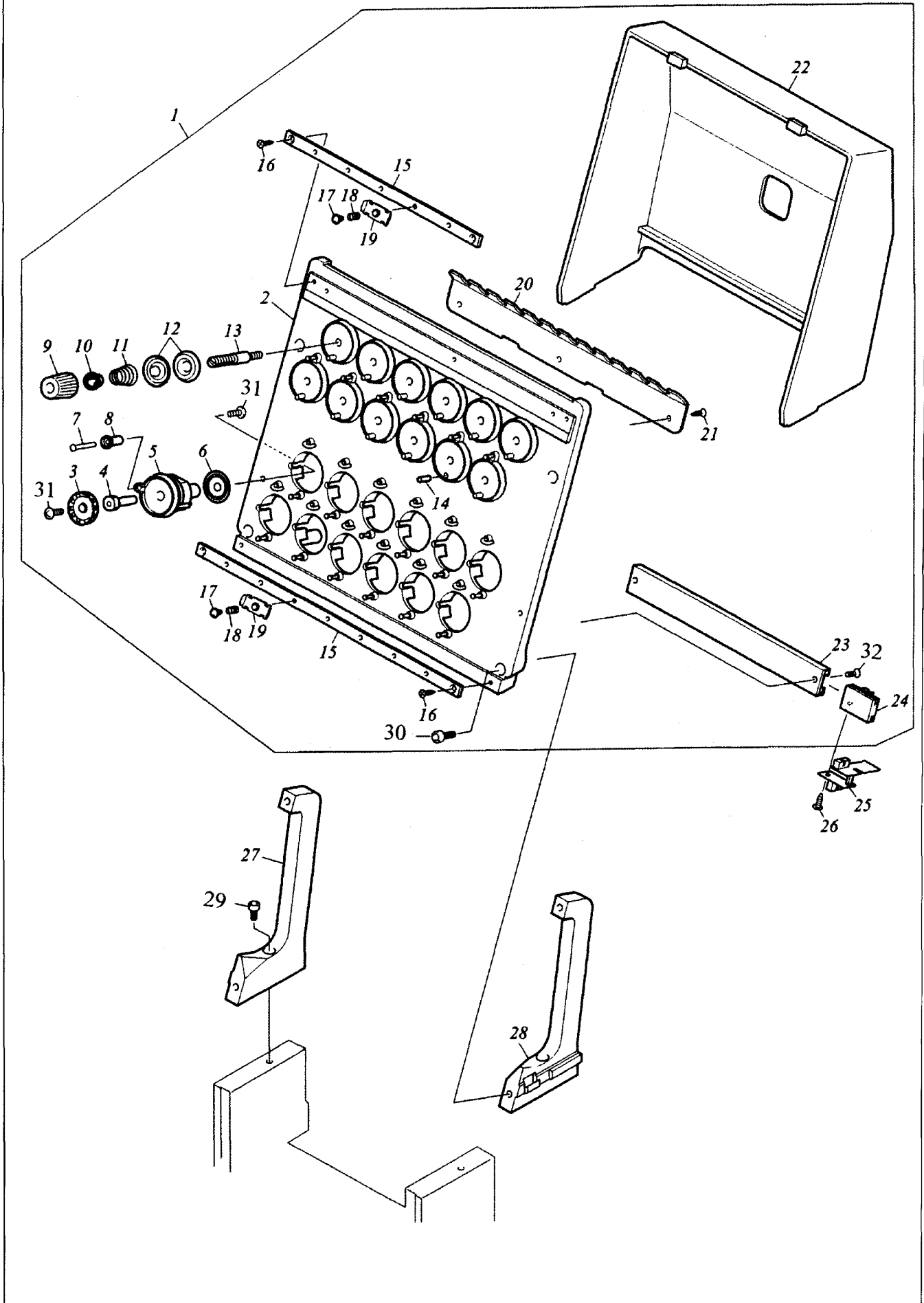
12. Y向驱动部位 Y-AXIS DRIVE SYSTEM



12. Y向驱动部件 Y-Axis Drive System

序号 No.	件号 A number	名称	PARTS NAME	备注 Remark
1	12-1	伺服电机	Servo Motor	
2	12-2	Y轴电机座	Y Motor Bracket	
3	12-3	螺钉	Head Screw	
4	12-4	Y轴限位开关	Y Limit Sensor	
5	12-5	Y轴检出板	Y Detecting Slit	
6	12-6	卡簧	E-ring	
7	12-7	Y轴皮带涨螺销	Y Belt Tension Pin	
8	12-8	螺钉	Head Screw	
9	12-9	垫圈	Washer	
10	12-10	滚针轴承	Needle Bearing	
11	12-11	Y轴	Y Shaft	
12	12-12	12mm针套管	12mm Dia. Needle Collar	
13	12-13	Y轴驱动带轮B	Y Drive Pulley B	
14	12-14	Y轴驱动带	Y Holder Drive Belt	
15	12-15	驱动带挡板	Belt Stopper	
16	12-16	X支撑L	X Holder L	
17	12-17	X支撑R	X Holder R	
18	12-18	Y导轨	Y Linear Way	
19	12-19	挡块	Stopper	
20	12-20	Y轴皮带涨紧支撑座	Y Belt Tension Stay	
21	12-21	Y轴带轮	Y Pulley	
22	12-22	轴节	Shuff Connection	
23	12-23	螺钉	Head Screw	
24	12-24	轴承座	Shaff Base	
25	12-25	轴承	Shaff	
26	12-26	卡簧	Spring	
27	12-27	螺钉	Head Screw	
28	12-28	螺帽	Screw Cap	
29	12-29	螺钉	Head Screw	
30	12-30	弹簧垫片	Spring Washer	
31	12-31	平垫片	Washer	
32	12-32	螺钉	Head Screw	
33	12-33	螺钉	Head Screw	
34	12-34	弹簧垫片	Spring Washer	
35	12-35	平垫片	Washer	

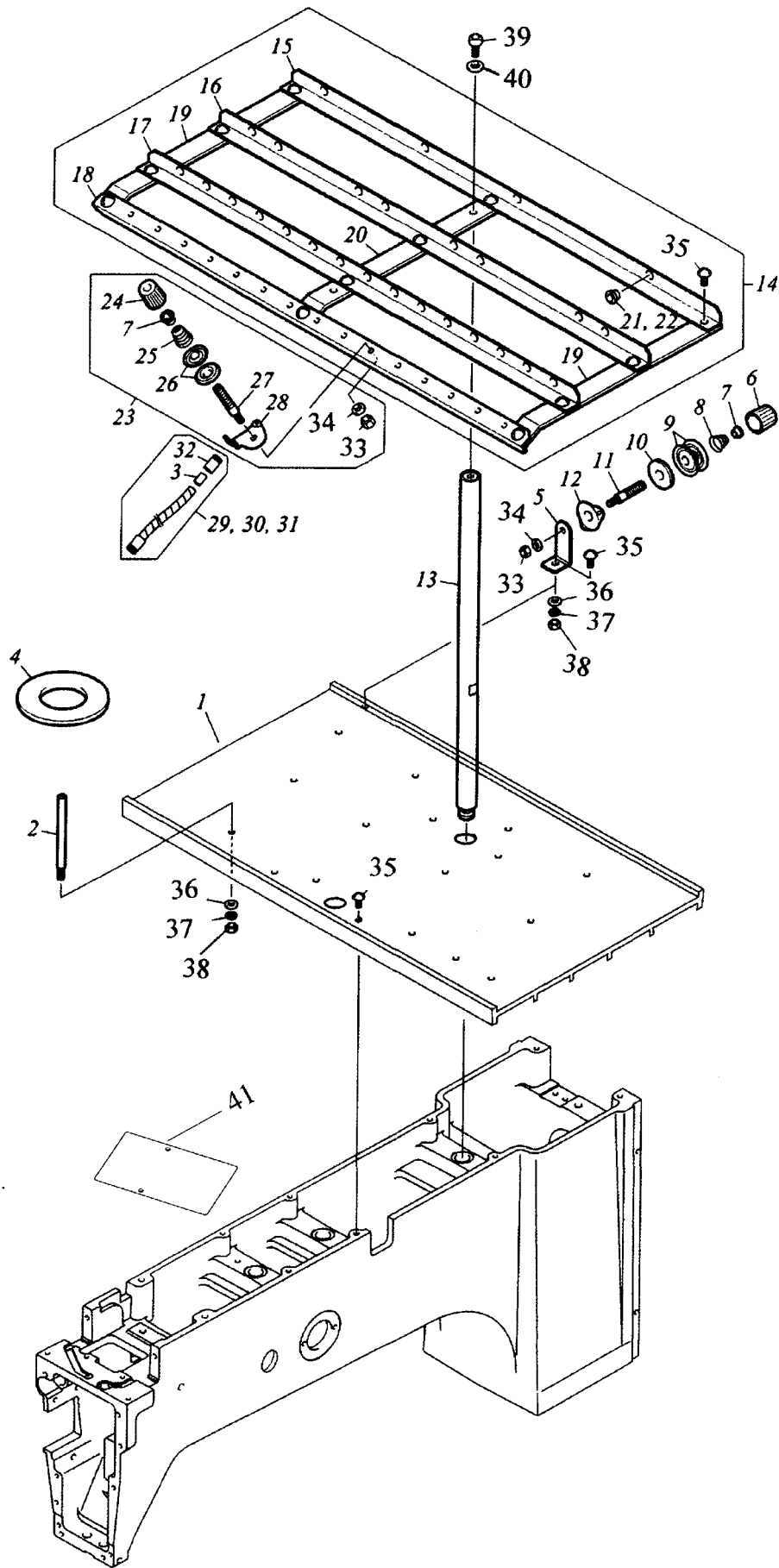
13. 夹线器部位 TENSION BASE



13. 夹线器部位 Thread Tension Base

序号 No.	件号 A number	名称	PARTS NAME	备注 Remark
1	13-1	夹线座组件	Rotary-type Tension Base Set	
2	13-2	独立夹线座	Tension Base	
3	13-3	旋转夹线片	Rotary Tension Disk	
4	13-4	夹线片轴	Slit Disk Shaft	
5	13-5	旋转座	Rotary Base	
6	13-6	旋转片	Rotary Disk Slit Plate	
7	13-7	导线销B	Thread Guide Pin B	
8	13-8	导线销滚筒	Guide Pin Roller	
9	13-9	调节螺钉	First Tension Thread Spring Screw	
10	13-10	弹簧箍	Spring Hook	
11	13-11	张力弹簧	First Tension Spring	
12	13-12	夹线片	First Tension Disk	
13	13-13	压力螺栓	First Tension Stud	
14	13-14	导线销A	Thread Guide Pin A	
15	13-15	导线板	Thread Guide Plate	
16	13-16	沉头螺钉	Countersunk Tapping Screw	3R*10
17	13-17	镀锌螺钉	Nickel-plated Screw	
18	13-18	压线弹簧	Thread Presser Spring	
19	13-19	压线片	Thread Presser	
20	13-20	上线导轨	Upper Thread Guide	
21	13-21	沉头螺钉	Countersunk Tapping Screw	3P*8
22	13-22	夹线座盖	Tension Base Cover	
23	13-23	断线感应导轨	Thread Breakage Sensor Rail	
24	13-24	断线感应座	Thread Breakage Sensor Base	
25	13-25	TC感应基板	TC Sensor Card	
26	13-26	十字槽盘头槽钉	Truss Head Tapping Screw	3P*6
27	13-27	独立夹线座支架L	Tension Base Support L	
28	13-28	独立夹线座支架R	Tension Base Support R	
29	13-29	螺钉	Head Screw	
30	13-30	螺钉	Head Screw	
31	13-31	螺钉	Head Screw	
32	13-32	螺钉	Head Screw	

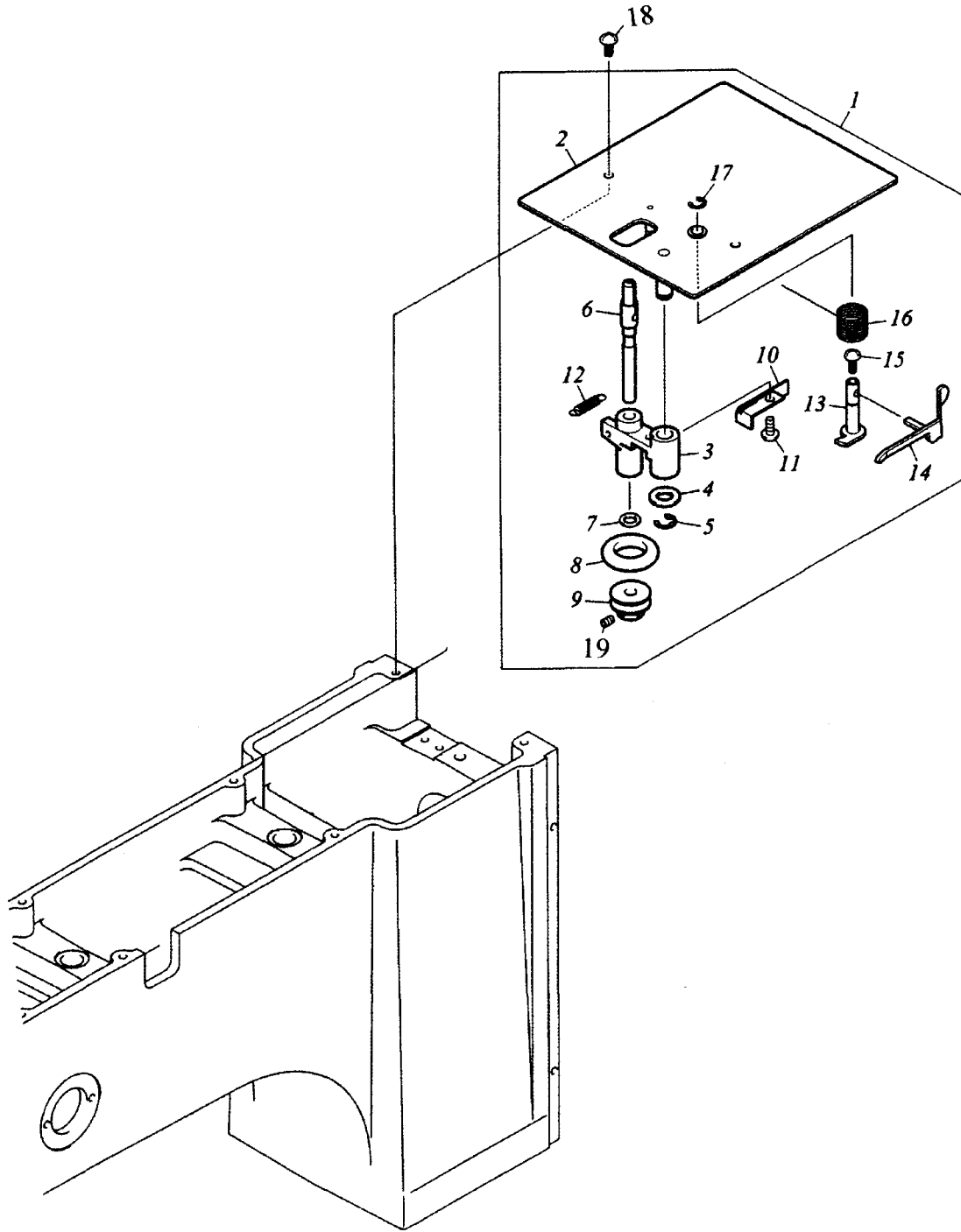
14. 线架部位 THREAD STAND



14. 线架部位 Thread Stand

序号 No.	件号 A number	名称	PARTS NAME	备注 Remark
1	14-1	线架盘	Thread Stand Plate	
2	14-2	线架螺栓	Thread Stand Stud	
3	14-3	压管	Tube Presser Pipe	
4	14-4	毡垫	Thread Stand Felt	
5	14-5	下线涨紧支撑座	Under Thread Tension Stay	
6	14-6	调节螺丝	Adjusting Screw	
7	14-7	弹簧箍	Spring Hook	
8	14-8	压线弹簧	Under Thread Winding Coil Spring	
9	14-9	压线片	Thread Course Tension Disk	
10	14-10	毡垫	Felt Packing	
11	14-11	压力螺栓	Thread Course Tension Stud	
12	14-12	过线板	Thread Course Thread Guide	
13	14-13	线架立柱	Thread Stand Shaft	
14	14-14	线架	Thread Course	
15	14-15	线架A	Thread Course A	
16	14-16	线架B	Thread Course B	
17	14-17	线架C	Thread Course C	
18	14-18	线架D	Thread Course D	
19	14-19	线架E	Thread Course E	
20	14-20	线架F	Thread Course F	
21	14-21	导线孔A	Thread Guide A (White)	
22	14-22	导线孔B	Thread Guide B (Red)	
23	14-23	第1独立夹线组件	No.1 Tension Set	
24	14-24	调节螺钉	No.1 Thread Tension Spring Screw	
25	14-25	张力弹簧	No.1 Tension Spring	
26	14-26	夹线片	No.1 Tension Disk	
27	14-27	压力螺栓	No.1 Tension Stud	
28	14-28	过线板	No.1 Tension Thread Course	
29	14-29	螺旋管1	Spiral Tube 1 For 6,7,8,9,10th Needle	L=220mm
30	14-30	螺旋管2	Spiral Tube 2 For 4,5,11,12th Needle	L=230mm
31	14-31	螺旋管3	Spiral Tube 3 For 1,2,3,13,14,15th Needle	L=240mm
32	14-32	轴节	Tube Joint	
33	14-33	螺帽	Screw Cap	
34	14-34	平垫片	Washer	
35	14-35	螺钉	Head Screw	
36	14-36	平垫片	Washer	
37	14-37	弹簧垫片	Spring Washer	
38	14-38	螺帽	Screw Cap	
39	14-39	螺钉	Head Screw	
40	14-40	垫片	Washer	
41	14-41	上面盖	Face Cover	

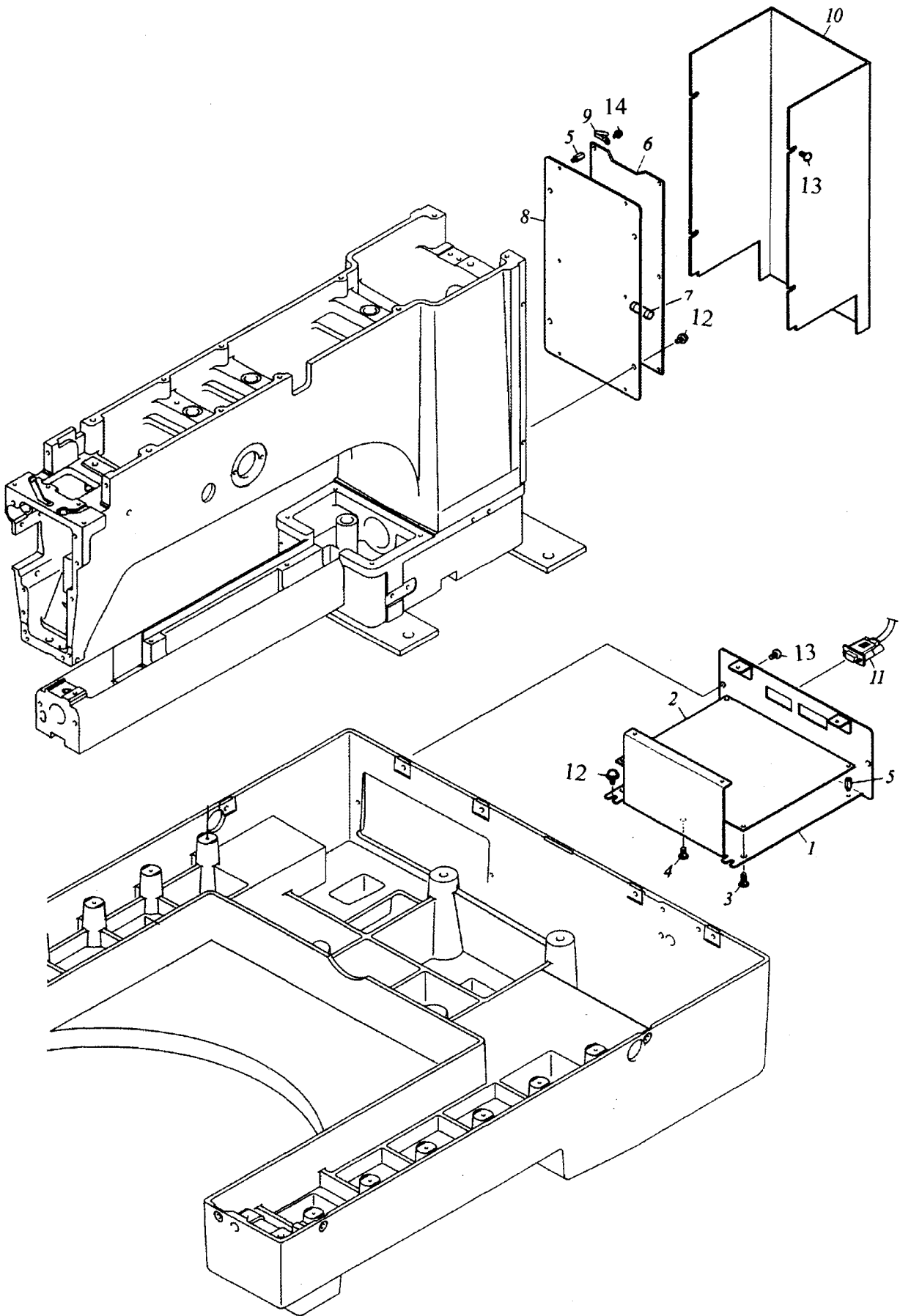
15. 自动绕线装置 UNDER THREAD WINDER



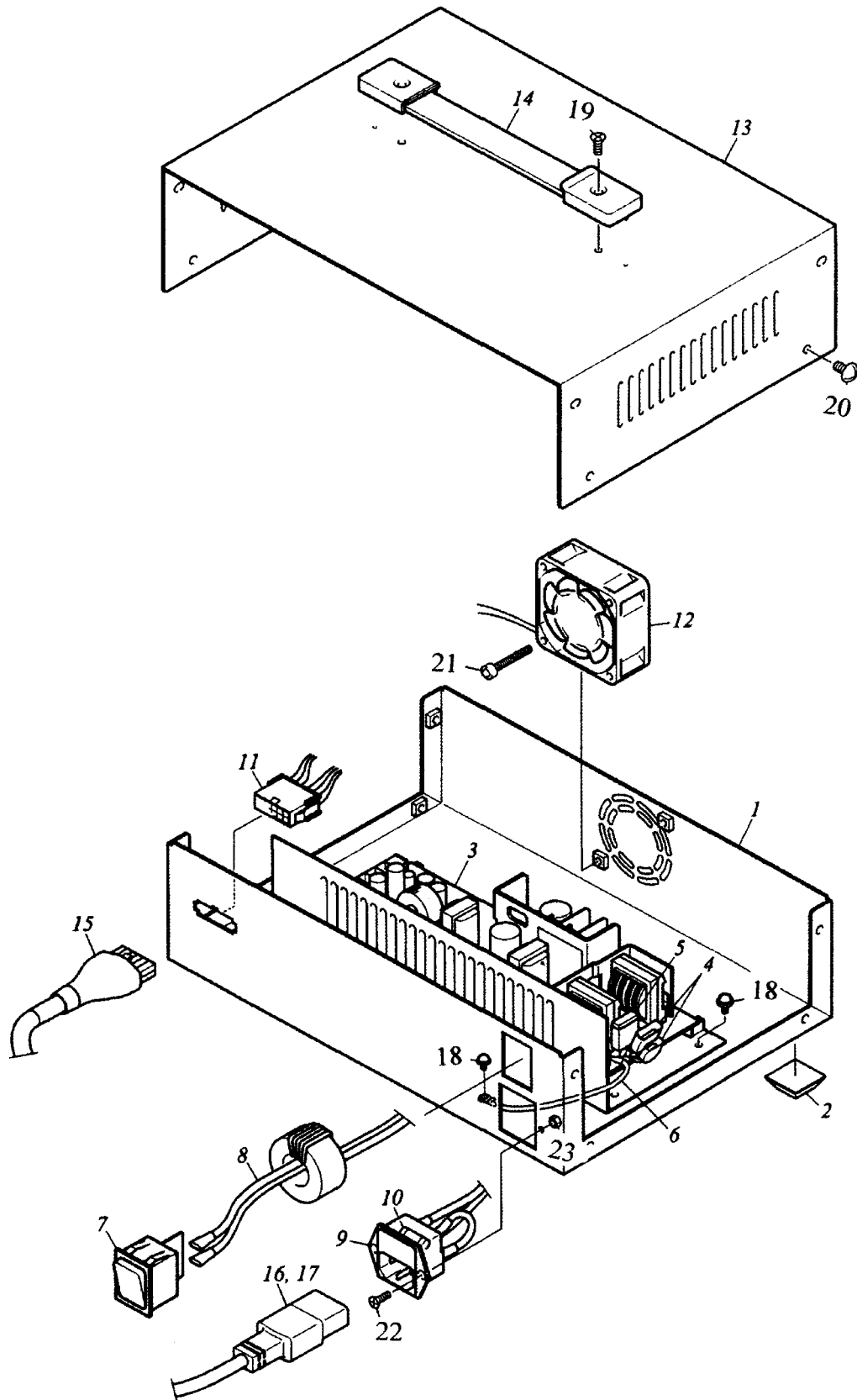
15. 自动绕线装置 Bobbin Winder

序号 No.	件号 A number	名称	PARTS NAME	备注 Remark
1	15-1	下线绕线座组件	Under Thread Winder Base Set	
2	15-2	下线绕线座	Under Thread Winder Base	
3	15-3	绕线臂	Thread Winder Arm	
4	15-4	垫圈	Spacer	16P*8.5P*0.8t
5	15-5	卡簧	E-ring	E-6 Black-coated
6	15-6	绕线轴	Thread Winder Shaft	
7	15-7	垫圈	Spacer	10P*6.5p*0.5T
8	15-8	橡胶圈	Rubber Ring	
9	15-9	线绕轮	Thread Winder Wheel	
10	15-10	绕线片弹簧	Thread Winder Plate Spring	
11	15-11	盘头螺钉	Pan Head Screw	11/64*40*8
12	15-12	绕线臂弹簧	Thread Winder Arm Spring	
13	15-13	绕线凸轮轴	Thread Winder Cam Shaft	
14	15-14	梭芯挡片	Bobbin Presser	
15	15-15	盘头螺钉	Pan Head Screw	9/64*40*5.5
16	15-16	绕线凸轮轴弹簧	Thread Winder Cam Shaft Spring	
17	15-17	卡簧	E-ring	E-5 Black-coated
18	15-18	螺钉	Head Screw	
19	15-19	内六角紧定螺钉	Head Screw	

16. 电气部位 ELECTRICAL PARTS



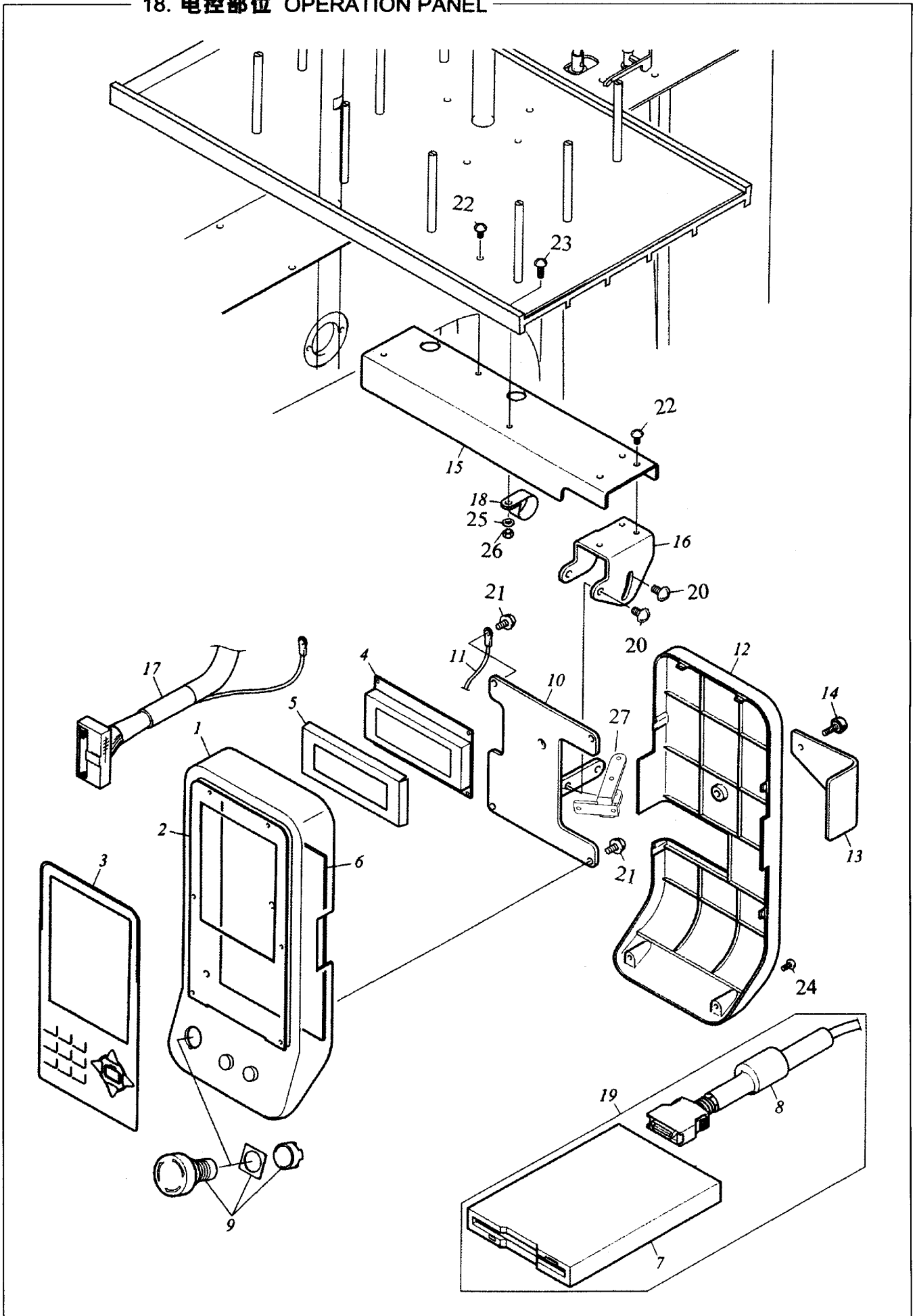
17. 电源箱 POWER SUPPLY BOX



17. 电源箱 Power Supply Box

序号 No.	件号 A number	名称	PARTS NAME	备注 Remark
1	17-1	箱体座	Case Base	
2	17-2	橡胶垫片	Cushion Rubber	
3	17-3	DC电源	DC Power Supply	
4	17-4	电流吸收器L	Surge Absorber Assy L	
5	17-5	电流吸收器FG	Surge Absorber Assy FG	
6	17-6	GND 绳	GND Cord	
7	17-7	上下开关	Seesaw Switch	
8	17-8	开关线夹	Switch Harness	
9	17-9	电源插头		
10	17-10	保险丝	Fuse: Glass Tube: 250V 6.3A	
11	17-11	DC电源供给线夹	DC Power Supply Harness	
12	17-12	电风扇	Fan (Power)	
13	17-13	箱体盖	Case Cover	
14	17-14	把头	Handle	
15	17-15	电源线DC	Power Cord DC	
16	17-16	电源线AC	Power Cord AC	For USA/Canada
17	17-17	电源线AC	Power Cord AC	For Europe
18	17-18	螺钉	Head Screw	
19	17-19	把手固定螺钉	Head Screw	
20	17-20	箱体盖螺钉	Head Screw	
21	17-21	风扇固定螺钉	Head Screw	
22	17-22	螺钉	Head Screw	
23	17-23	螺帽	Screw Cup	

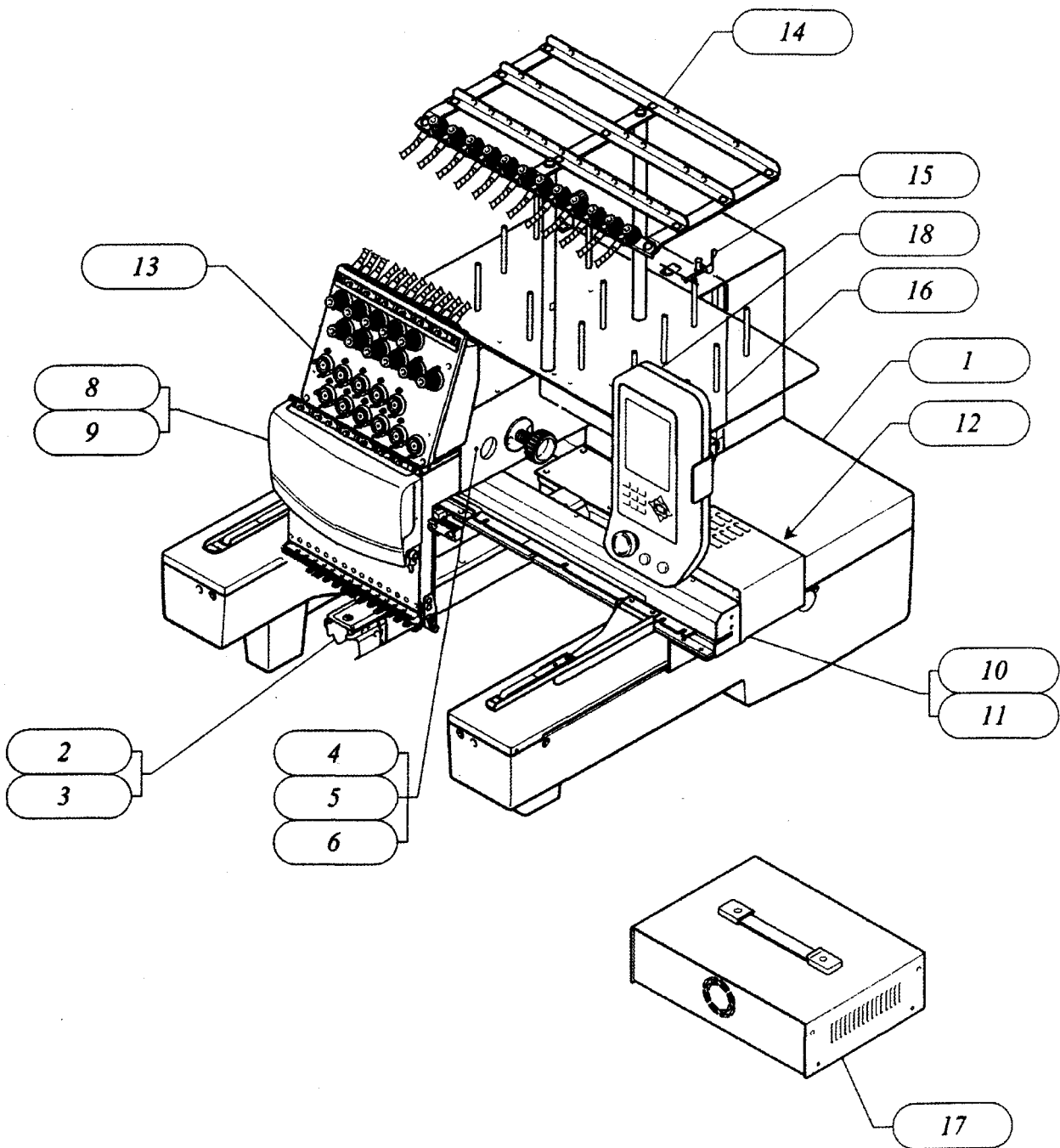
18. 电控部位 OPERATION PANEL



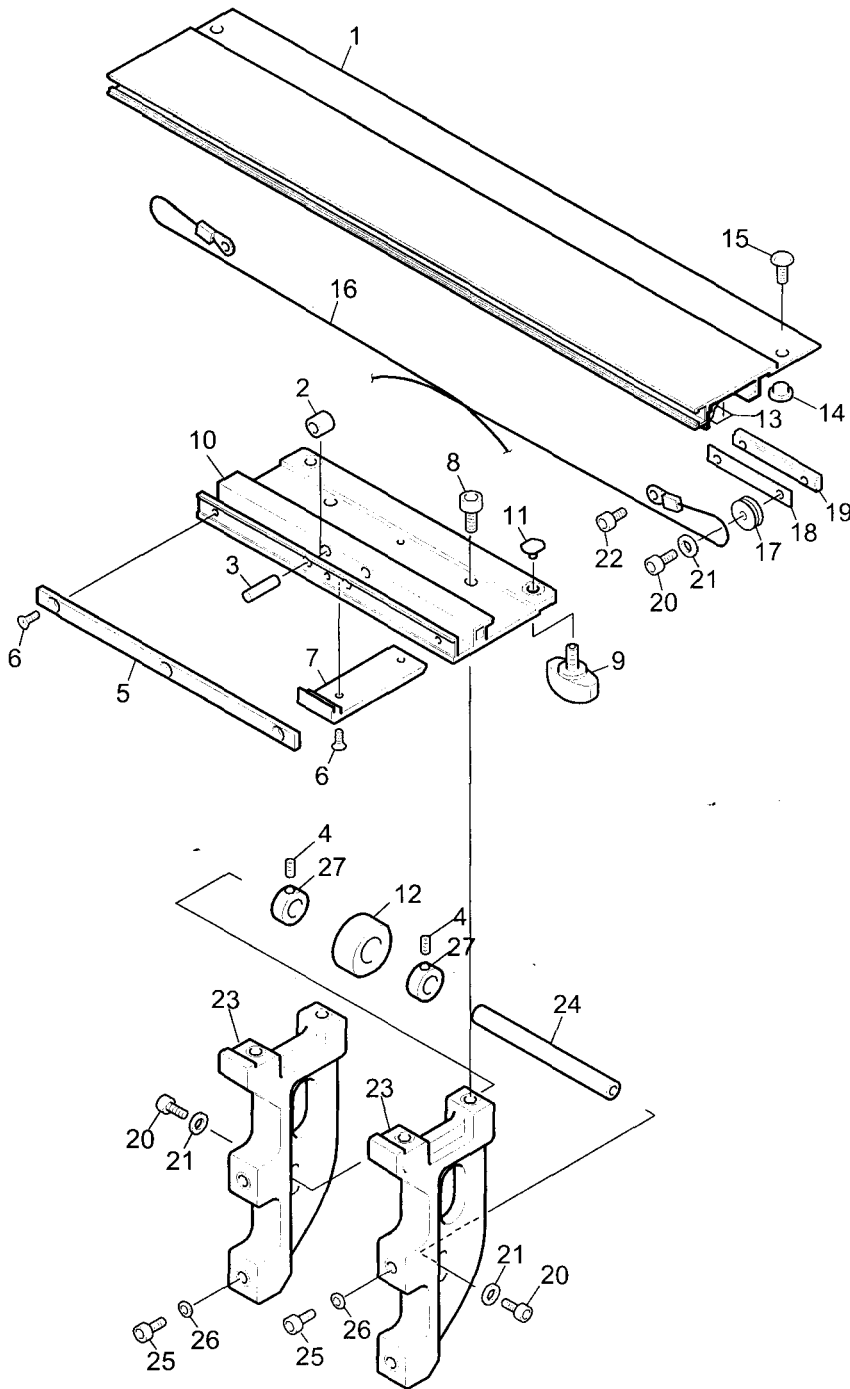
18. 电控部位 Operation Panel

序号 No.	件号 A number	名称	PARTS NAME	备注 Remark
1	18-1	操作头箱, 前面	Operation Panel Case, Front	
2	18-2	键板座	Keyboard Base	
3	18-3	操作面板	Operation Panel Keyborad	
4	18-4	LCD密封装置架	LCD Seuled Plafe	
5	18-5	LCD密封装置	LCD Seal	
6	18-6	箱架基板 (2)	Console 2 Card	
7	18-7	FDD	FDD	
8	18-8	FDD电缆	FDD Cable	
9	18-9	紧急停止开关	Emergency Stop Switch	
10	18-10	操作箱托架	Operation Box Bracket	
11	18-11	GND绳	GND Cord	
12	18-12	操作头箱, 右面	Operation Panel Case, Back	
13	18-13	DIP开关	DIP Switch	
14	18-14	螺丝	Knob Screw	
15	18-15	操作头附加支撑座	Panel Attaching Stay	
16	18-16	操作头附加托架	Panel Attaching Bracket	
17	18-17	操作头线夹	Operation Panel Harness	
18	18-18	尼龙夹	Nylon Clamp	
19	18-19	FDD组合	FDD Unit	
20	18-20	螺钉	Head Screw	
21	18-21	螺钉	Head Screw	
22	18-22	螺钉	Head Screw	
23	18-23	螺钉	Head Screw	
24	18-24	螺钉	Head Screw	
25	18-25	垫片	Washer	
26	18-26	螺帽	Screw Cap	
27	18-27	托架支撑	Support Of Bracket	

总图 GENERAL VIEW

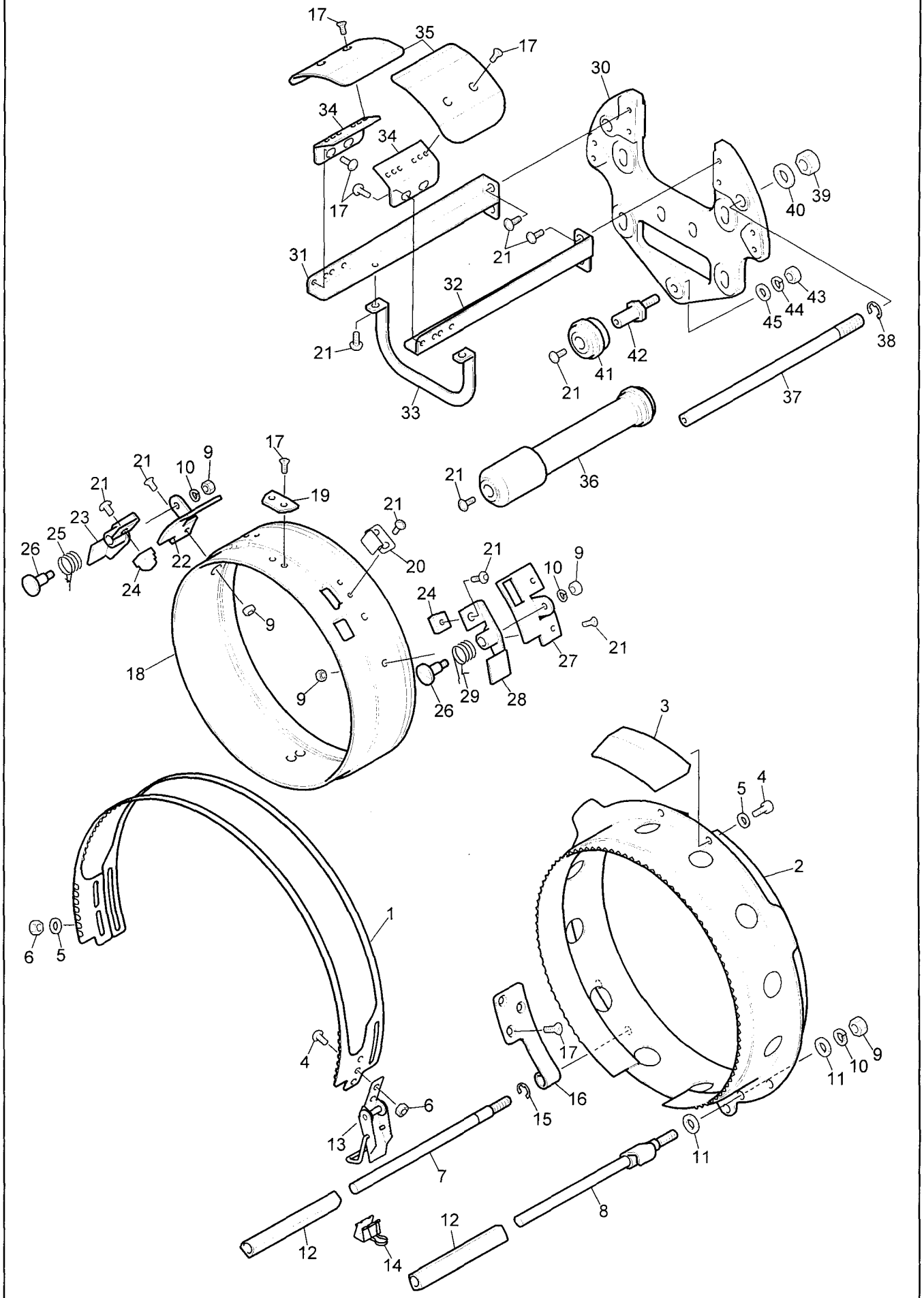


19. 帽框部件 1 BASE FRAME ASSEMBLY 1



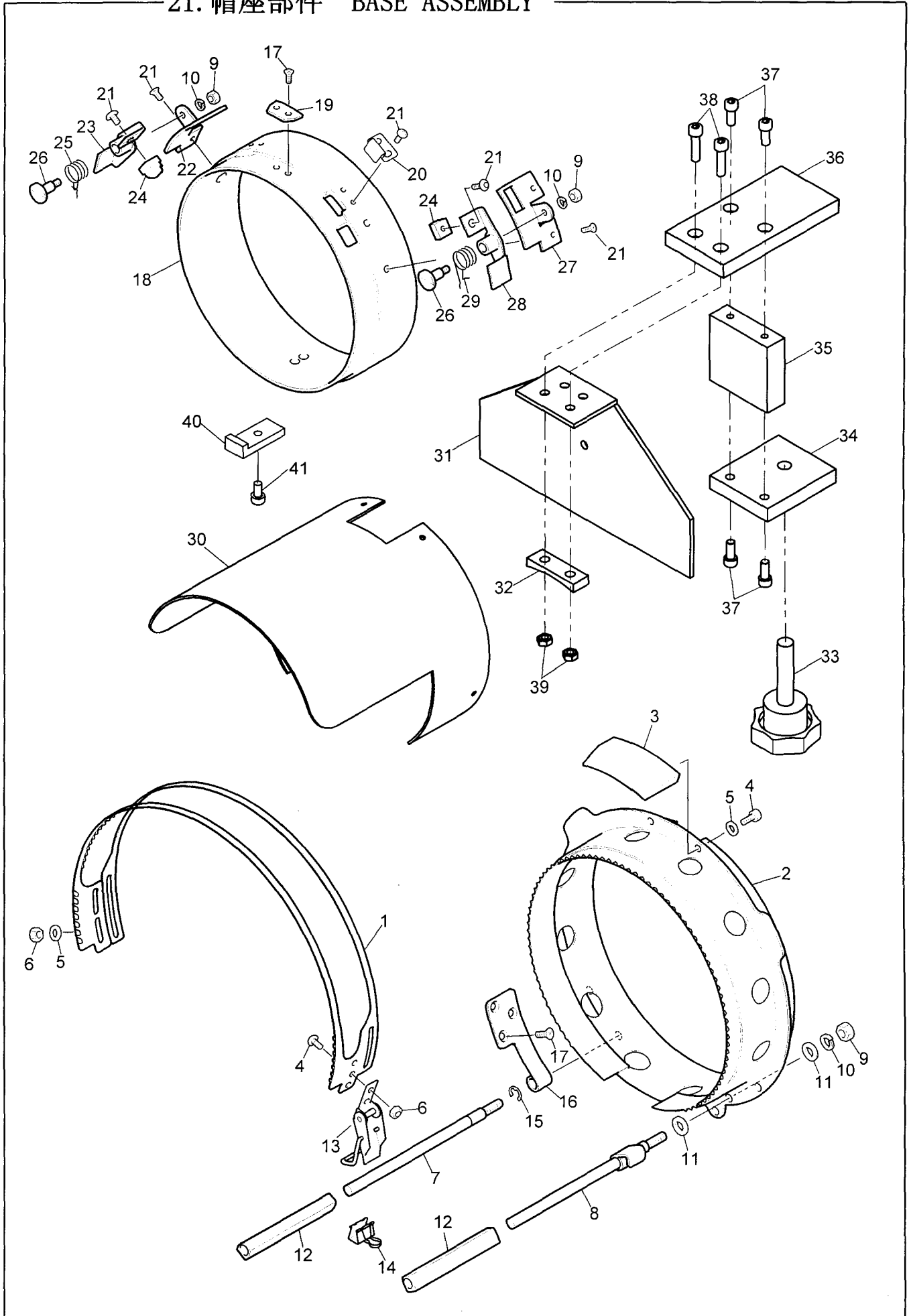
19. 帽框部件 1 BASE FRAME ASSEMBLY 1				
序号 Ref.NO.	零件编号 Part NO.	名称	Parts Name	备注 Remark
1	19-1	滑动座	Slide angle	
2	19-2	滚子	Needle bearing	
3	19-3	轴位销	Bearing pin	
4	19-4	内六角坚定螺钉	Hexagon socket set screw	
5	19-5	间隔条	Spacer	
6	19-6	十字槽沉头螺钉	Cross recessed countersunk head screw	
7	19-7	刹车盘	Skid plate	
8	19-8	内六角圆柱头螺钉	Hexagon socket head cap screw	
9	19-9	固定螺钉	Frame set screw	
10	19-10	帽框座	Cap frame base	
11	19-11	螺钉	Presser screw	
12	19-12	底座滚轮	Base holder roller	
13	19-13	钢皮条	Rail plate	
14	19-14	螺母	Nut	
15	19-15	十字槽盘头螺钉	Cross recessed pan head screw	
16	19-16	钢丝	Drive wire	
17	19-17	钢丝导轮	Wire guide ring	
18	19-18	板	Plate	
19	19-19	滑动嵌条	Slide nut	
20	19-20	内六角圆柱头螺钉	Hexagon socket head cap screw	
21	19-21	平垫圈	Flat gasket	
22	19-22	内六角圆柱头螺钉	Hexagon socket head cap screw	
23	19-23	底座	Base bracket	
24	19-24	底座轴	Base holder shaft	
25	19-25	内六角圆柱头螺钉	Hexagon socket head cap screw	
26	19-26	平垫圈	Flat gasket	
27	19-27	挡圈	Block circle	

20. 帽框部件 2 BASE FRAME ASSEMBLY 2



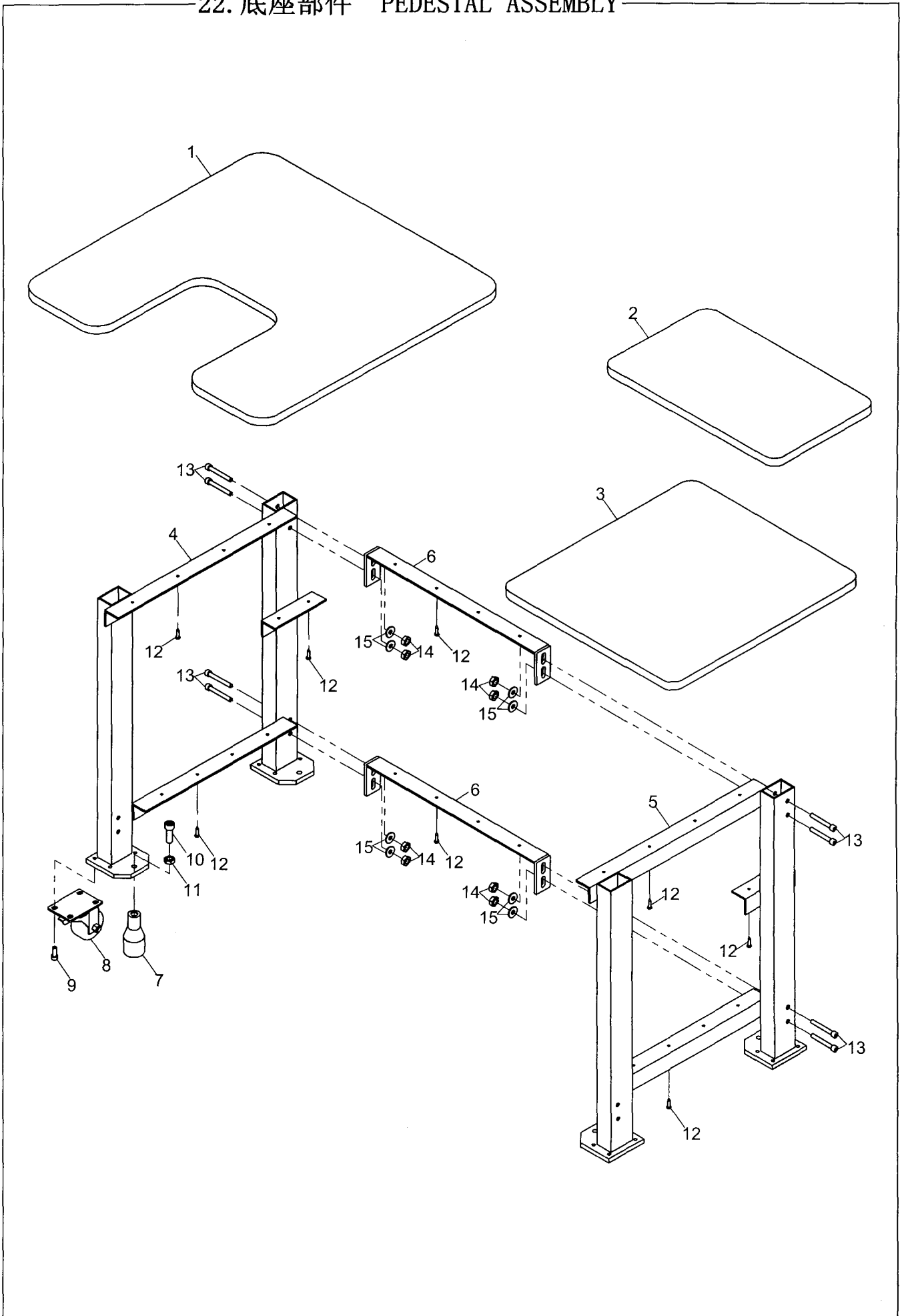
20. 帽框部件 2 BASE FRAME ASSEMBLY 2				
序号 Ref.NO.	零件编号 Part NO.	名称	Parts Name	备注 Remark
1	20-1	框架	Lid frame	
2	20-2	帽框	Base frame	
3	20-3	挡板	Visor bracket	
4	20-4	内六角圆柱头螺钉	Hexagon socket head cap screw	
5	20-5	平垫圈	Flat gasket	
6	20-6	六角螺母	Hexagon nut	
7	20-7	帽框左轴	Base frame shaft L	
8	20-8	帽框右轴	Base frame shaft R	
9	20-9	六角螺母	Hexagon nut	
10	20-10	弹簧垫圈	Spring gasket	
11	20-11	平垫圈	Flat gasket	
12	20-12	夹圈	Clip stopper	
13	20-13	锁	Pinch lock	
14	20-14	夹线组件	Clip fitting set	
15	20-15	E 形圈	E-ring	
16	20-16	框架固定器 A	Lid frame fittings A	
17	20-17	十字槽沉头螺钉	Cross recessed countersunk head screw	
18	20-18	驱动环	Drive ring	
19	20-19	中央档板	Center block	
20	20-20	压簧	Presser spring	
21	20-21	十字槽盘头螺钉	Truss head tapping screw	
22	20-22	左杆架	Lever bracket L	
23	20-23	左杆	Releasing lever L	
24	20-24	锁紧销	Lock pin	
25	20-25	左杆弹簧	Lever spring L	
26	20-26	销	Lever pin	
27	20-27	右杆架	Lever bracket R	
28	20-28	右杆	Releasing lever R	
29	20-29	右杆弹簧	Lever spring R	
30	20-30	驱动基座	Drive base	
31	20-31	左引导座	Guide base L	
32	20-32	右引导座	Guide base R	
33	20-33	加固板	Reinforcing plate	
34	20-34	导板	Guide bracket	
35	20-35	针板导板	Needle plate guide	
36	20-36	导轨 A	Guide roller A	
37	20-37	导轨轴	Guide roller shaft	
38	20-38	E 环	E-ring	
39	20-39	六角螺母	Hexagon nut	
40	20-40	平垫圈	Plain gasket	
41	20-41	导轨 B	Guide roller B	
42	20-42	电子引导销	Eccentric guide pin	
43	20-43	六角螺母	Hexagon nut	
44	20-44	弹簧垫圈	Spring gasket	
45	20-45	平垫圈	Flat gasket	

21. 帽座部件 BASE ASSEMBLY



21. 帽座部件 BASE ASSEMBLY				
序号 Ref.NO.	零件编号 Part NO.	名称	Parts Name	备注 Remark
1	21-1	框架	Lid frame	
2	21-2	帽框	Base frame	
3	21-3	挡板	Visor bracket	
4	21-4	内六角圆柱头螺钉	Hexagon socket head cap screw	
5	21-5	平垫圈	Flat gasket	
6	21-6	六角螺母	Hexagon nut	
7	21-7	帽框左轴	Base frame shaft L	
8	21-8	帽框右轴	Base frame shaft R	
9	21-9	六角螺母	Hexagon nut	
10	21-10	弹簧垫圈	Spring gasket	
11	21-11	平垫圈	Flat gasket	
12	21-12	夹圈	Clip stopper	
13	21-13	锁	Pinch lock	
14	21-14	夹线组件	Clip fitting set	
15	21-15	E 形圈	E-ring	
16	21-16	框架固定器 A	Lid frame fittings A	
17	21-17	十字槽沉头螺钉	Cross recessed countersunk head screw	
18	21-18	驱动环	Drive ring	
19	21-19	中央档板	Center block	
20	21-20	压簧	Presser spring	
21	21-21	十字槽盘头螺钉	Truss head tapping screw	
22	21-22	左杆架	Lever bracket L	
23	21-23	左杆	Releasing lever L	
24	21-24	锁紧销	Lock pin	
25	21-25	左杆弹簧	Lever spring L	
26	21-26	销	Lever pin	
27	21-27	右杆架	Lever bracket R	
28	21-28	右杆	Releasing lever R	
29	21-29	右杆弹簧	Lever spring R	
30	21-30	内撑	Internal support	
31	21-31	支撑	Support	
32	21-32	垫块	Cushion block	
33	21-33	螺栓	Bolt	
34	21-34	固定座板一	Fixing plate 1	
35	21-35	固定座板二	Fixing plate 2	
36	21-36	固定座板三	Fixing plate 3	
37	21-37	内六角圆柱头螺钉	Hexagon socket head cap screw	
38	21-38	内六角圆柱头螺钉	Hexagon socket head cap screw	
39	21-39	六角螺母	Hexagon nut	
40	21-40	固定片	Fixing lever spacer	
41	21-41	内六角圆柱头螺钉	Hexagon socket head cap screw	

22. 底座部件 PEDESTAL ASSEMBLY



22. 底座部件 PEDESTAL ASSEMBLY				
序号 Ref.NO.	零件编号 Part NO.	名称	Parts Name	备注 Remark
1	22-1	底座上台板	Base upper table	
2	22-2	底座中台板	Base middle table	
3	22-3	底座下台板	Base lower table	
4	22-4	左底座	Left base	
5	22-5	右底座	Right base	
6	22-6	连接撑	Connecting support	
7	22-7	垫脚	Washer	
8	22-8	轮子	Wheel	
9	22-9	内六角圆柱头螺钉	Hexagon socket head cap screw	
10	22-10	内六角圆柱头螺钉	Hexagon socket head cap screw	
11	22-11	六角螺母	Hexagon nut	
12	22-12	自攻螺钉	Tapping screw	
13	22-13	内六角圆柱头螺钉	Hexagon socket head cap screw	
14	22-14	六角螺母	Hexagon nut	
15	22-15	平垫圈	Flat gasket	