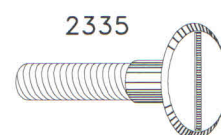
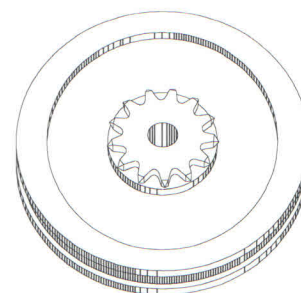
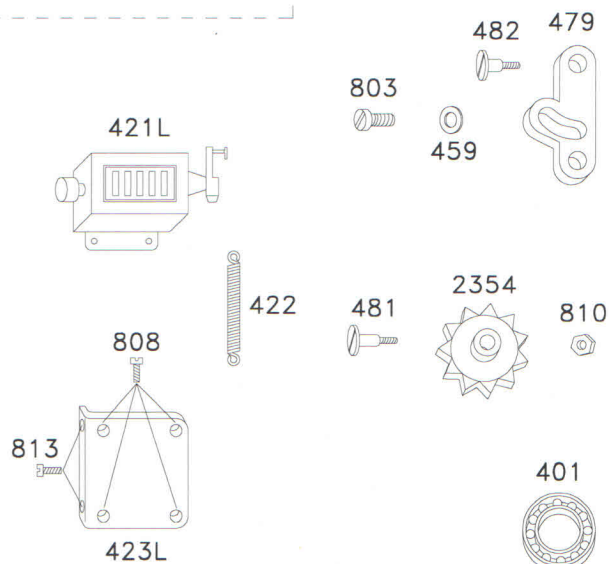
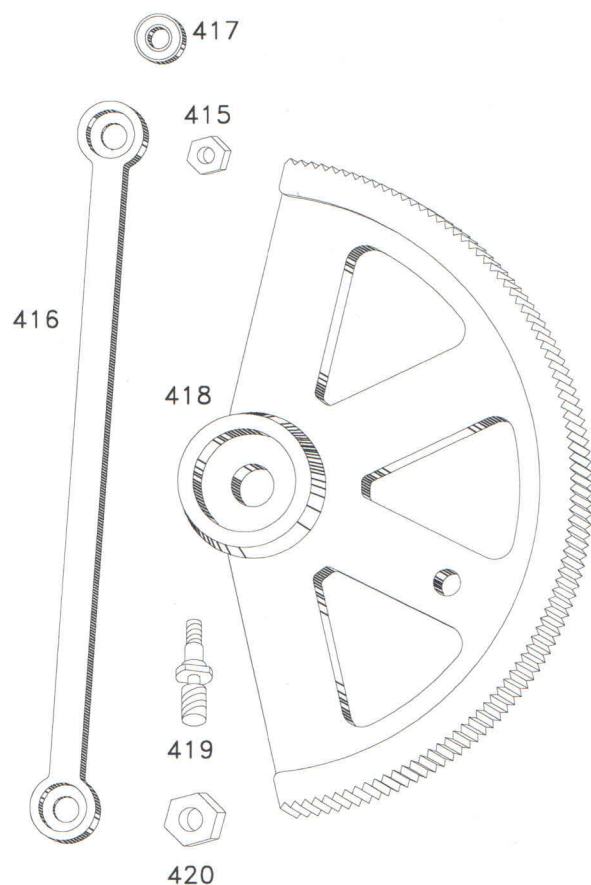
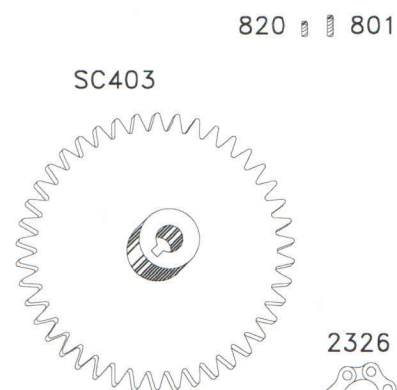
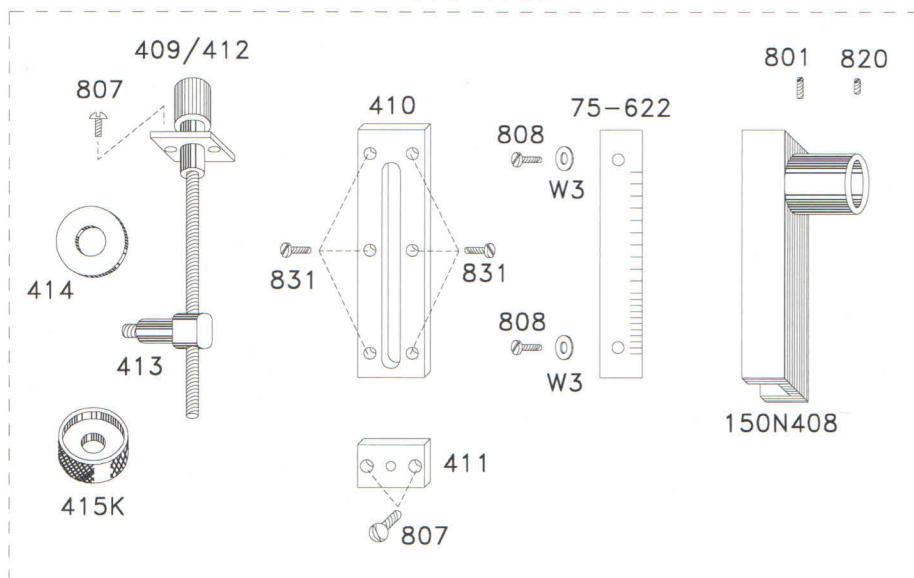


Ace

STRIP CUTTER PARTS MANUAL

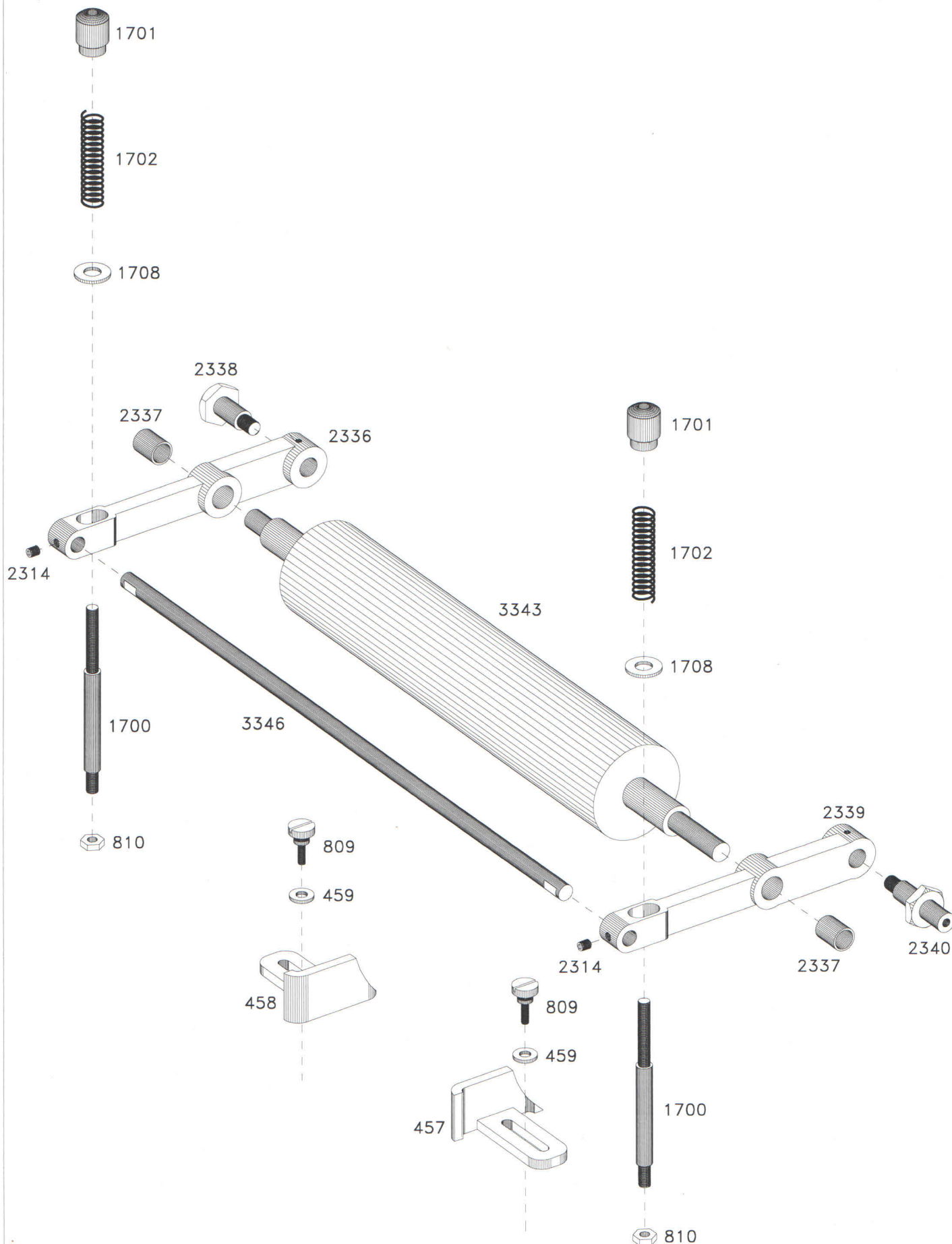
FOR MODEL C300WS

MONTROSE EQUIPMENT SALES CO.
202 N. 10 ~~202 N. 10~~ ~~STREET~~ STREET
BROOKLYN, NEW YORK 11211
PHONE: (718) 388-7446



PARTS FOR ACE MODEL	STRIP CUTTER C300WS
------------------------	------------------------

PART NUMBER	DESCRIPTION
75-622	30 Inch Plate
150N408	Feed Crank
300-408A	Feed Crank Assembly
401	Bearing
409/412	Measuring Screw Assembly
410	Measuring Plate
411	End Plate
413	Moving Axle
414	Position Plate
415	Hex Nut
415K	Knurled Nut
416	Feed Rod
417	Bearing
418	Gear
419	Fixing Axle
420	Nut
421L	SC Model Counter
422	Spring
423L	SC Model Bracket
450	Bearing
451	Washer
452	Nut
453	Thrust Bearing
459	Washer
465	Nut
466	Bearing Plate
468	Washer
469	Nut
473	Rod Pin
479	Idle Sprocket Arm
481	Idle Sprocket Screw
482	Idle Sprocket Screw
801	Screw
803	Screw
807	Screw
808	Screw
810	Nut
813	Screw
820	Screw
831	Screw
2326	Chain
2335	Large Gear Axle
SC400	Sprocket Pulley
SC403	Sprocket
SC467	Eccentric Axle



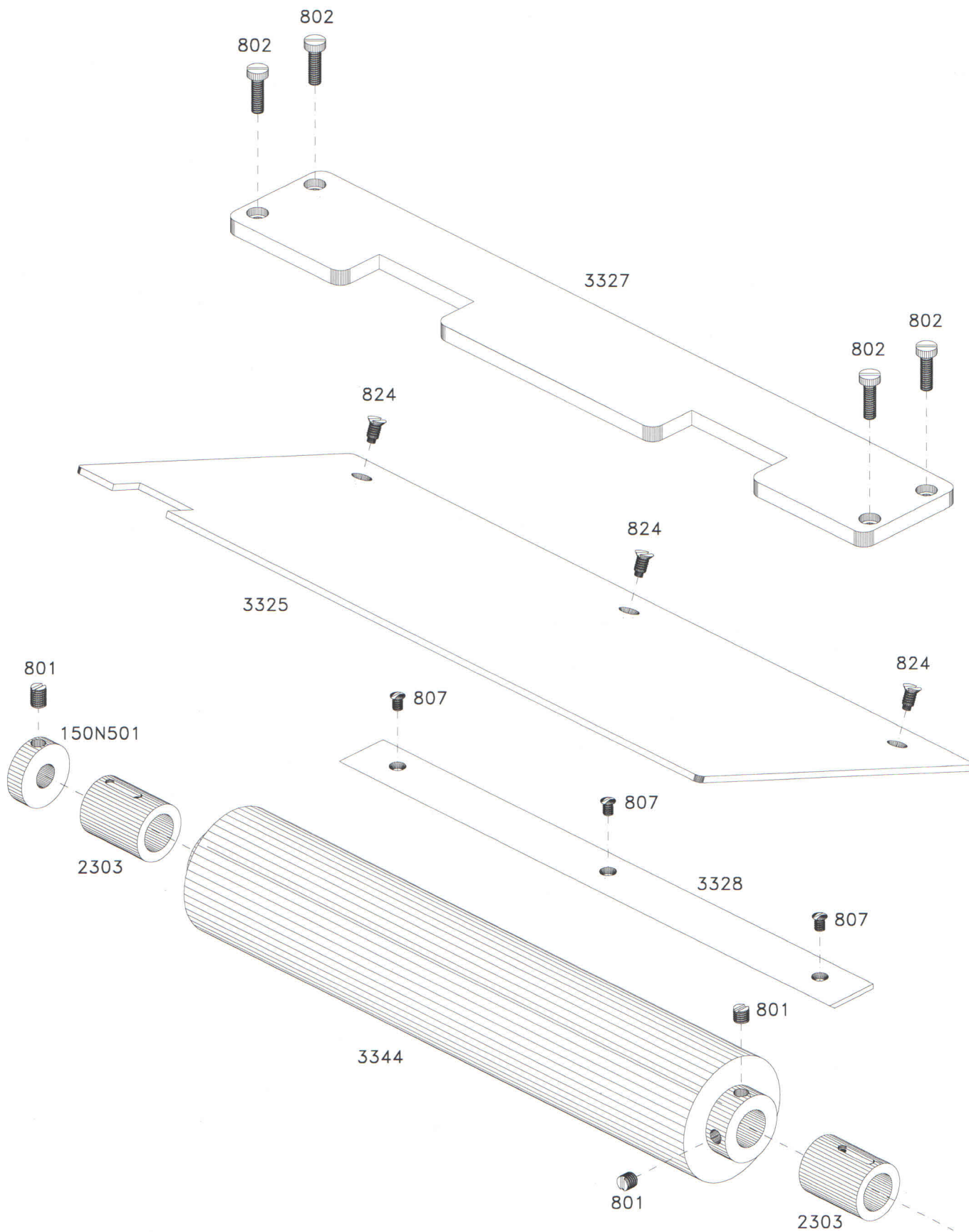
PARTS FOR ACE MODEL	STRIP CUTTER C300WS
------------------------	------------------------

PART NUMBER	DESCRIPTION
457	Right Material Guide
458	Left Material Guide
459	Washer
809	Screw
810	Nut
1700	Column
1701	Nut
1702	Spring
1708	Washer
2314	Screw
2336	Upper Roller Lever
2337	Bushing
2338	Set Screw
2339	Upper Roller Lever
2340	Set Screw
3343	Upper Roller
3346	Connecting Rod



PARTS FOR ACE MODEL	STRIP CUTTER C300WS
------------------------	------------------------

PART NUMBER	DESCRIPTION
435	Clutch Plate
436	Screw
437	Ring
438	Clutch Roller
439	Clutch Pin
440	Clutch Spring
441	Clutch Gear
442	Clutch Cam
443	Screw
446	Drum Plate
446W	Washer
491	Complete Clutch
492	Complete Retaining Drum
623	Bearing Arm
623M	Bearing
801	Screw
802	Screw
821	Screw
2303	Bushing
2349	Stud
2350	Lower Roller Gear
3345	Shaft
TP3X13	Pin

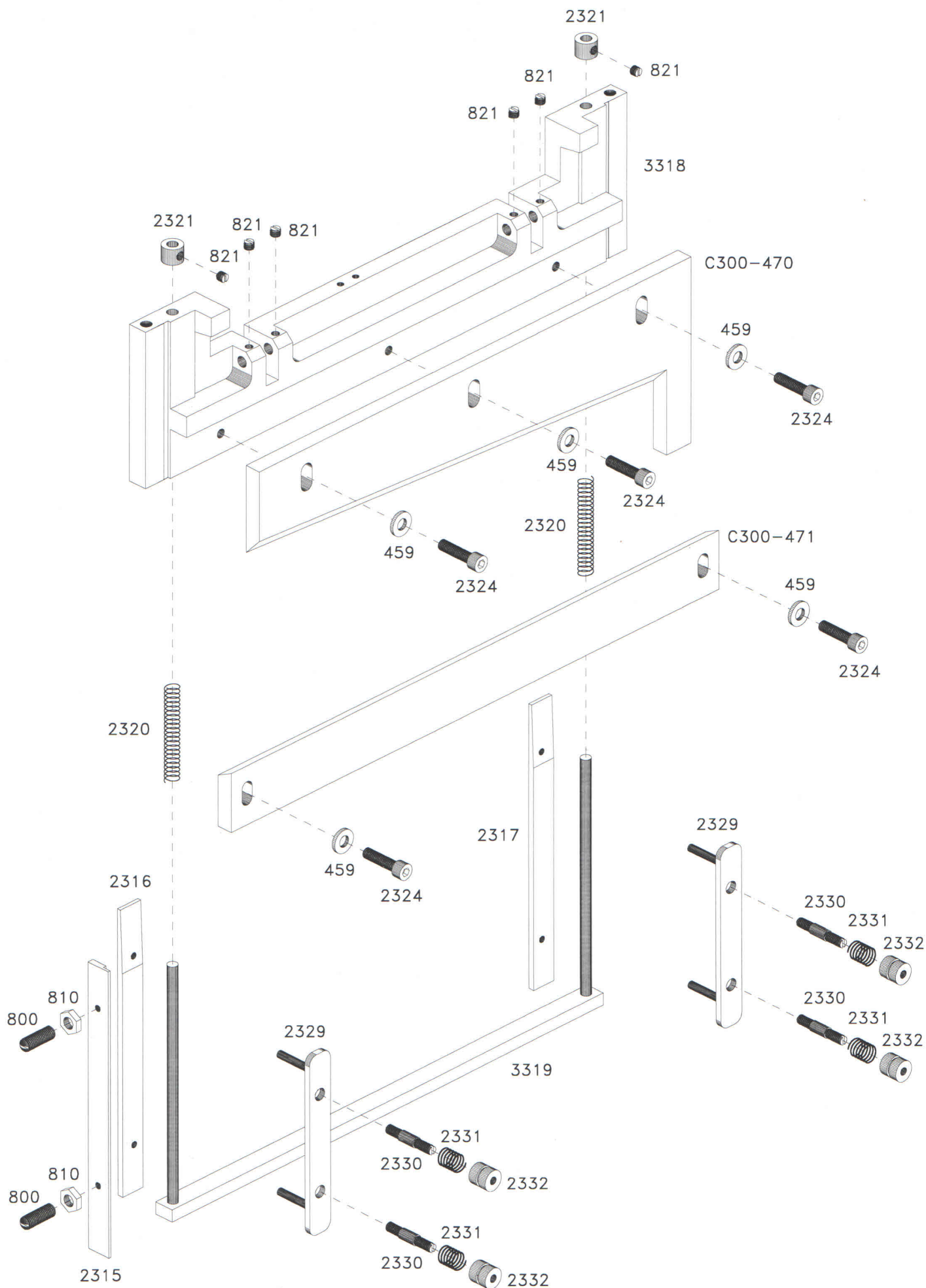


PARTS FOR ACE MODEL	STRIP CUTTER C300WS
------------------------	------------------------

PART NUMBER	DESCRIPTION
150N501	Collar
801	Screw
802	Screw
807	Screw
824	Screw
2303	Bushing
3325	Chute Plate
3327	Base Bridge
3328	Guide Plate
3344	Lower Roller Rubber

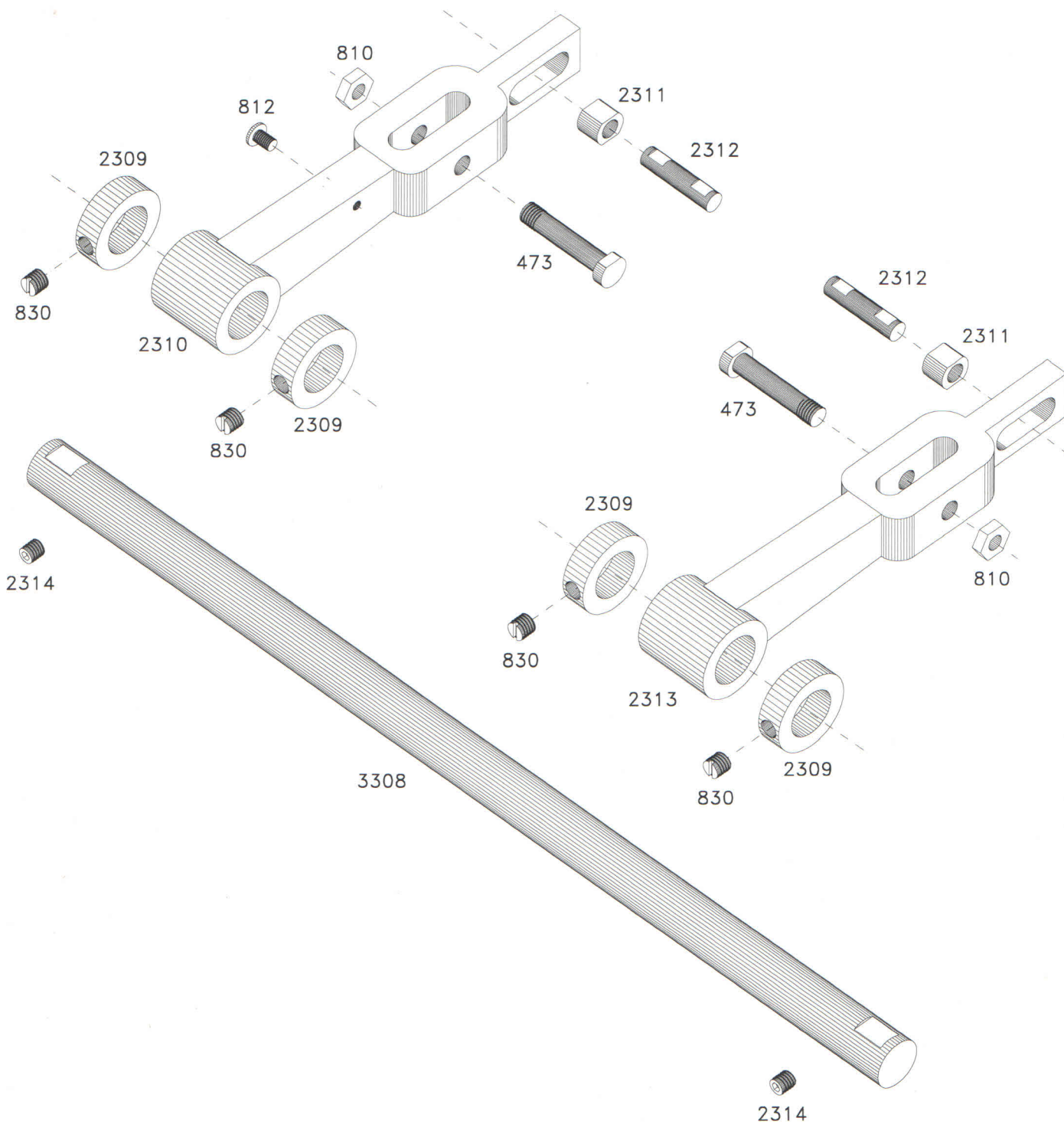
PARTS FOR ACE STRIP CUTTER
MODEL C300WS

PART NUMBER	DESCRIPTION
404K	Key
404KC	Key
801	Screw
820	Screw
821	Screw
2303	Bushing
2305	Eccentric Collar
2306	Eccentric Strap
2307	Eccentric Sheave
3304	Crank Shaft



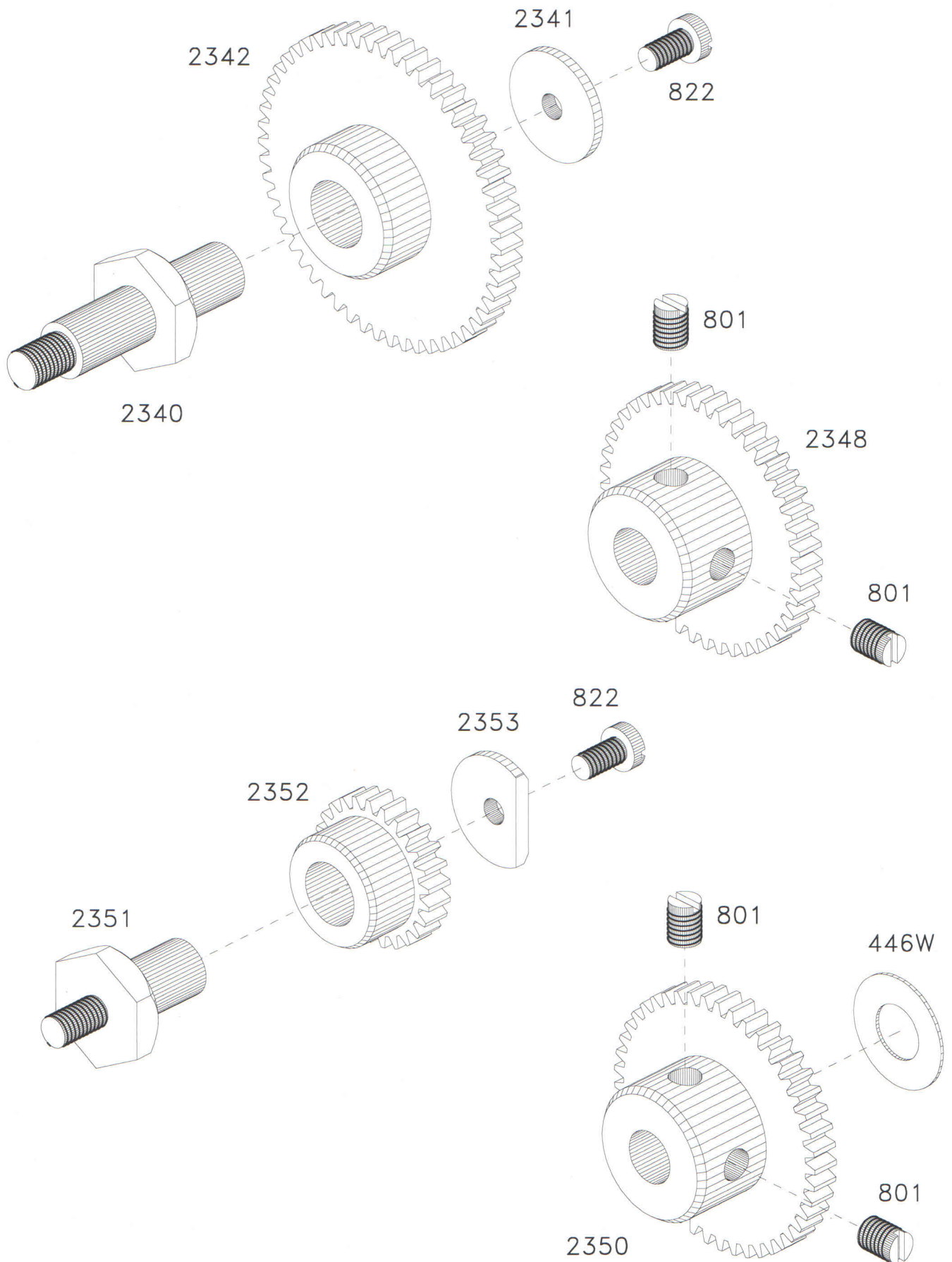
PARTS FOR ACE MODEL	STRIP CUTTER C300WS
------------------------	------------------------

PART NUMBER	DESCRIPTION
459	Washer
800	Screw
810	Nut
821	Screw
2315	Slide Plate
2316	Slide Plate
2317	Slide Plate
2320	Spring
2321	Collar
2324	Screw
2329	Upper Knife Pressure Plate
2330	Stud
2331	Spring
2332	Adjusting Nut
3318	Upper Knife Base
3319	Material Holder
C300-470	Upper Knife
C300-471	Lower Knife



PARTS FOR ACE MODEL	STRIP CUTTER C300WS
------------------------	------------------------

PART NUMBER	DESCRIPTION
473	Rod Pin
810	Nut
812	Screw
830	Screw
2309	Collar
2310	Rocker Lever
2311	Side Bushing
2312	Rocker Lever Pin
2313	Rocker Lever
2314	Screw
3308	Rocker Lever Shaft



PARTS FOR ACE STRIP CUTTER
MODEL C300WS

PART NUMBER	DESCRIPTION
446W	Washer
801	Screw
822	Screw
2340	Set Screw
2341	Washer
2342	Large Idler Gear
2348	Upper Roller Gear
2350	Lower Roller Gear
2351	Stud for Small Idler Gear
2352	Small Idler Gear
2353	Washer