

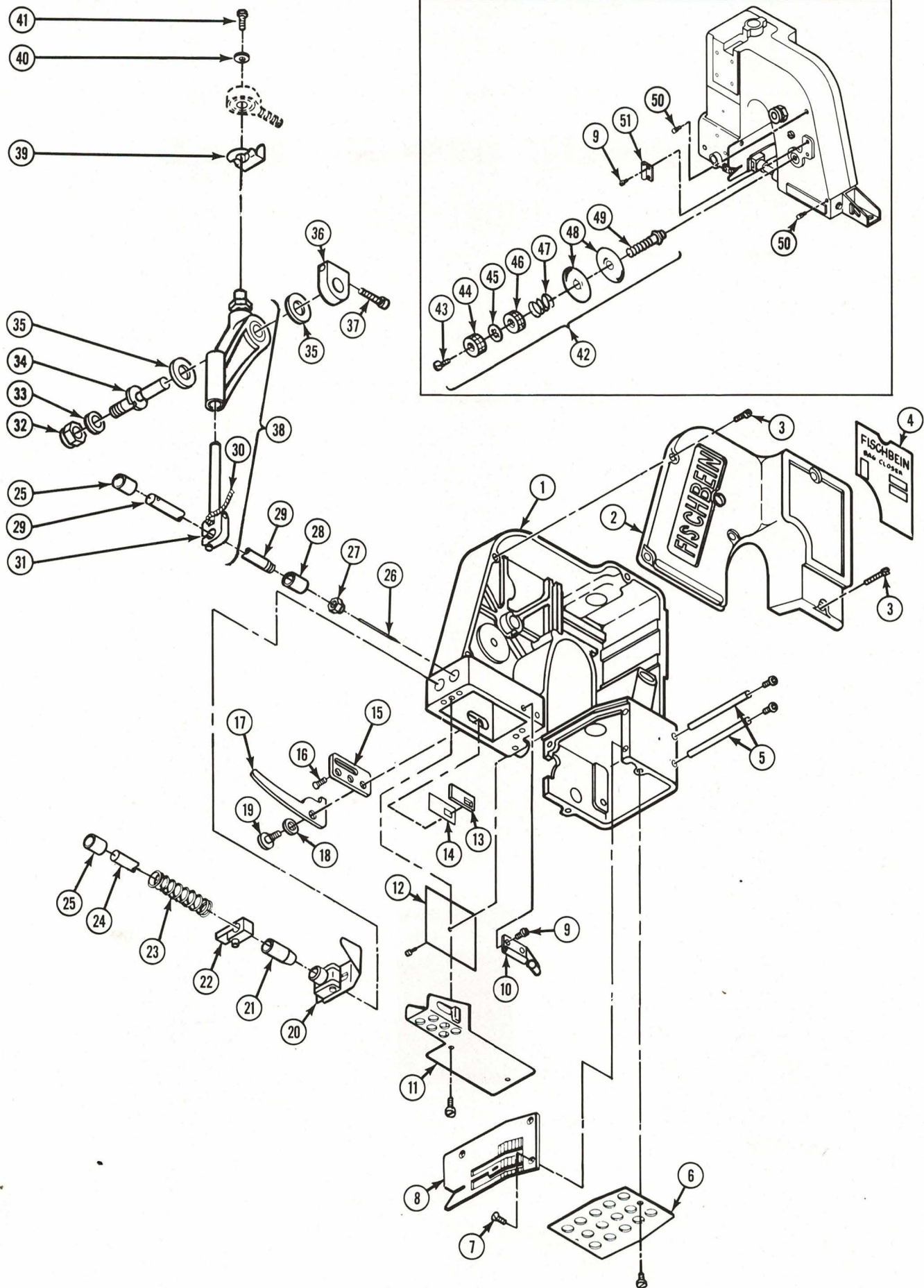
FISCHBEIN SEWING HEAD

MODEL ECR

PARTS ILLUSTRATIONS



PLATE A



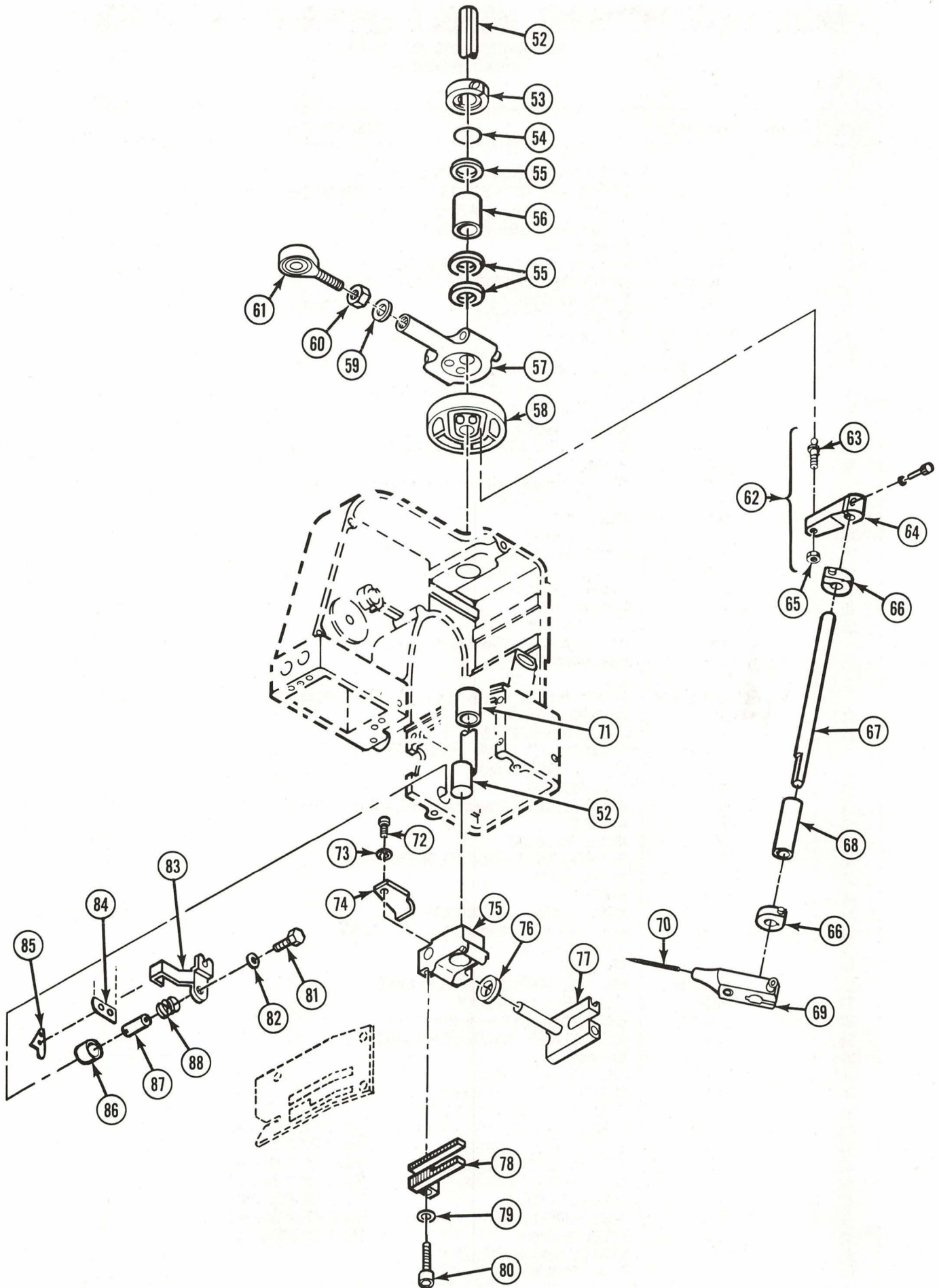
MOD. "ECR" HOUSING, NEEDLE LEVER, PRESSER FOOT

ILLUSTRATED PARTS BREAKDOWN
ORDER BY NUMBER

PLATE A

| ITEM | QUAN. | PART NO. | DESCRIPTION |
|------|-------|------------|--|
| 1 | 1 | 11448 | ASSY., HOUSING & COVER W/BUSHINGS |
| | 8 | SS832316 | SCREW, SOC. SET - #8-32 N.C. X 3/16 (SCREW FOR ALL BUSHINGS) |
| 2 | 1 | 11289 | COVER, HOUSING - (PART OF ITEM #1) |
| 3 | 6 | FR83258 | SCREW, FILLISTER HD. - #8-32 N.C. X 5/8 |
| 4 | 1 | 11004 | NAMEPLATE |
| 5 | 2 | 11010 | STUD, FEED DOG, CARRIER SLIDE |
| | 4 | SB103214 | SCREW, SOC. BUTTON HD. - #10-32 N.F. X 1/4 |
| 6 | 1 | 11102 | COVER, LOOPER |
| | 1 | 11108 | STUD, LOOPER COVER |
| 7 | 3 | F64038 | SCREW, FLAT HD. - #6/40 N.F. X 3/8 |
| 8 | 1 | 11210 | PLATE, THROAT - STANDARD |
| | 1 | 11212 | PLATE, THROAT - TAPING |
| 9 | 4 | B632316 | SCREW, BINDING HD. - #6/32 N.C. X 3/16 |
| 10 | 1 | 11321 | TUBE, THREAD GUIDE (FRONT) |
| 11 | 1 | 11101 | GUARD, NEEDLE BAR |
| | 3 | P83214 | SCREW, BINDING HD. - #8-32 N.C. X 1/4 |
| 12 | 1 | 11009 | PLATE, COVER |
| | 1 | B103214 | SCREW, BINDING HD. - #10-32 N.F. X 1/4 |
| 13 | 1 | 11657 | COVER, SLIDE PAD |
| 14 | 1 | 11656 | PAD, SLIDE |
| 15 | 1 | 11651 | PLATE, LEVER |
| 16 | 2 | F832516 | SCREW, FLATHEAD - #8-32 N.C. X 5/16 |
| 17 | 1 | 11654 | LEVER, LIFTER - PRESSER FOOT |
| 18 | 1 | 11655 | WASHER, SPRING |
| 19 | 1 | 11653 | SCREW, PIVOT |
| 20 | 1 | 11400 | ASSY., PRESSER FOOT |
| | 1 | 11399 | PRESSER FOOT, TAPING & PLASTIC |
| | 1 | 11402 | BOLT, HINGING |
| | 1 | 11711 | NUT |
| | 2 | SS832316FP | SCREW, SOC. SET - #8-32 N.C. X 3/16 (FLAT POINT) |
| 21 | 1 | 11444 | BUSHING, LOWER |
| 22 | 1 | 11652 | LIFTER, PRESSER FOOT |
| | | SC64012 | SCREW, SOCKET CAP - #6-40 N.F. X 1/2 |
| 23 | 1 | 11414 | SPRING, PRESSER BAR |
| 24 | 1 | 11404 | PRESSER BAR |
| 25 | 2 | 11442 | BUSHING, NEEDLE BAR & PRESSER BAR - UPPER |
| 26 | 1 | D5 | NEEDLE |
| 27 | 1 | 11501 | NUT, NEEDLE BAR |
| 28 | 1 | 11443 | BUSHING, NEEDLE BAR - LOWER |
| 29 | 1 | 11500 | NEEDLE BAR |
| 30 | 1 | 11508 | WICKING |
| 31 | 1 | 11502 | ASSY., CLAMP - NEEDLE BAR |
| 32 | 1 | 11268 | NUT, LOCK (NYLOK SPECIAL) - 3/8 - 24 N.C. |
| 33 | 1 | A3934 | WASHER, FLAT |
| 34 | 1 | 11287 | PIN, PIVOT |
| 35 | 2 | WT38132 | WASHER, THRUST - NEEDLE LEVER |
| 36 | 1 | 11008 | CLAMP, PIVOT - NEEDLE |
| 37 | 1 | SC64058 | SCREW, SOC, CAP - #6-40 N.F. X 5/8 |
| 38 | 1 | 11099 | ASSY., CLAMP - NEEDLE BAR LEVER |
| 39 | 1 | 11510 | SPRING |
| 40 | 1 | WF10 | WASHER, FLAT - #10 |
| 41 | 1 | H103212 | SCREW, HEX HD. - #10-32 N.F. X 1/2 |
| 42 | 1 | 11112 | ASSY., TENSION - COMPLETE |
| 43 | 1 | F64038 | SCREW, FLAT HD. - #6-40 N.F. X 3/8 (PART OF ITEM #42) |
| 44 | 1 | 11116 | NUT, TENSION - UPPER (PART OF ITEM #42) |
| 45 | 1 | 11120 | WASHER, LOCK - TENSION (PART OF ITEM #42) |
| 46 | 1 | 11117 | NUT, TENSION - LOWER (PART OF ITEM #42) |
| 47 | 1 | 11115 | SPRING, TENSION (PART OF ITEM #42) |
| 48 | 2 | 11114 | DISC, TENSION (PART OF ITEM #42) |
| 49 | 1 | 11113 | STUD, TENSION (PART OF ITEM #42) |
| 50 | 2 | 11109 | EYELET, THREAD PULLOFF |
| 51 | 1 | 11118 | TUBE, THREAD GUIDE - REAR |

PLATE B

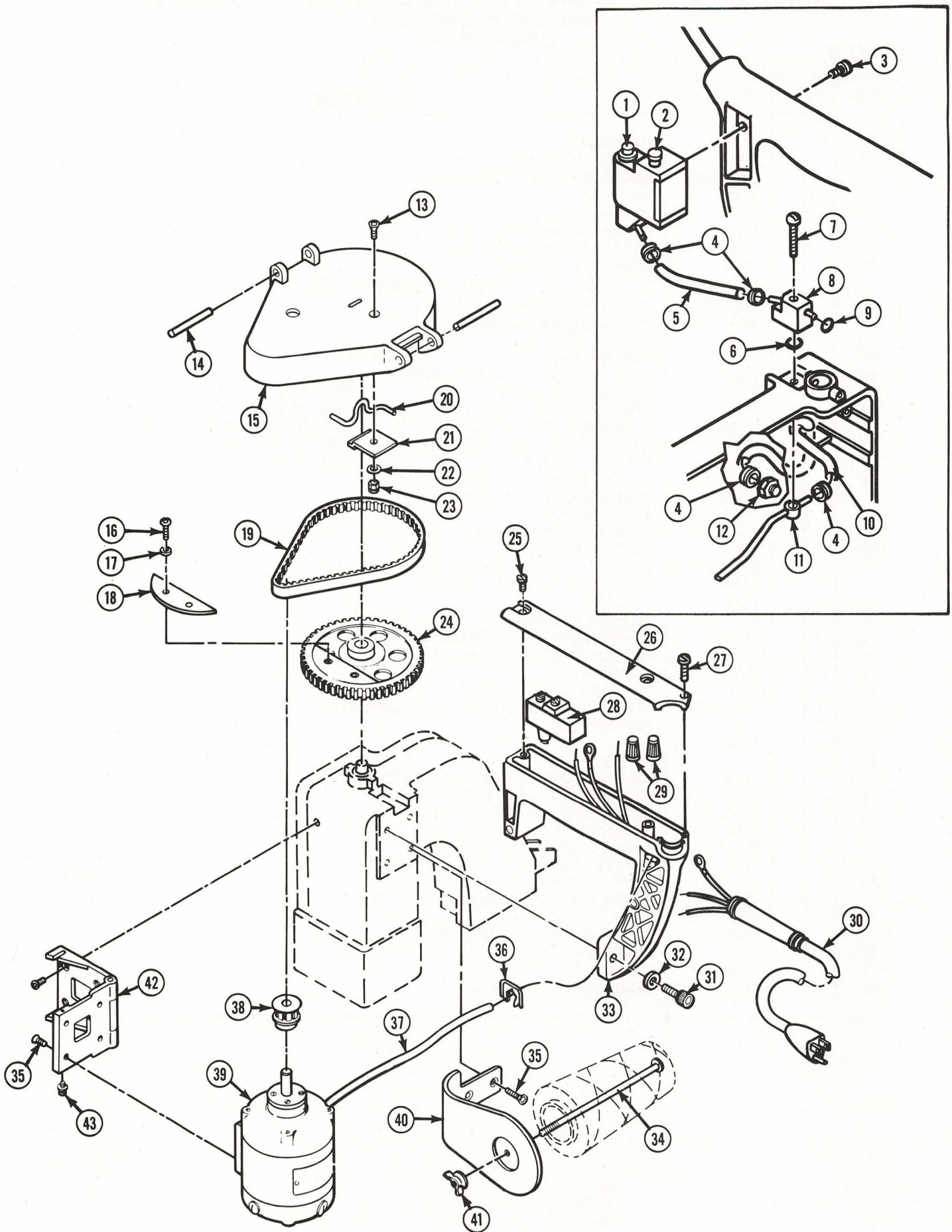


MODEL "ECR" MAIN SHAFT & LOOPER ASSEMBLY

ILLUSTRATED PARTS BREAKDOWN
ORDER BY NUMBER

PLATE B

| ITEM | QUAN. | PART NO. | DESCRIPTION |
|------|-------|------------|---|
| 52 | 1 | 11600 | MAIN SHAFT |
| 53 | 1 | 11616 | COLLAR, MAIN SHAFT |
| | 1 | SC54038 | SCREW, SOC. CAP - #5/40 N.C. X 3/8 |
| 54 | 1 | 10420 | RING, "O" |
| 55 | 3 | 11006 | WASHER, THRUST |
| 56 | 1 | 11441 | BUSHING, MAIN SHAFT - REAR |
| 57 | 1 | 11079 | ASSY., CON ROD & ECCENTRIC |
| 58 | 1 | 11310 | ASSY., CAM - LOOPER |
| | 1 | SS103258CP | SCREW, SOC. SET - #10-32 N.F. X 5/8 (CONE POINT) |
| | 1 | SS103212 | SCREW, SOC. SET - #10-32 N.F. X 1/2 |
| 59 | 1 | WIT516 | WASHER, INTERNAL TOOTH - 5/16 |
| 60 | 1 | 11608 | NUT, HEX - SPECIAL |
| 61 | 1 | 11607 | BEARING, ROD END |
| 62 | 1 | 11317 | ASSY., ARM & STUD - CAM FOLLOWER |
| 63 | 1 | 11308 | STUD, CAM FOLLOWER (PART OF ITEM #62) |
| 64 | 1 | 11307 | ARM. FOLLOWER - CAM (PART OF ITEM #62) |
| | 1 | SC54058 | SCREW, SOC. CAP - #5-40 N.C. X 5/8 (PART OF ITEM #62) |
| | 1 | 11313 | WASHER, FLAT - #5 (SPECIAL) (PART OF ITEM #62) |
| 65 | 1 | 11309 | NUT, HEX - SPECIAL (PART OF ITEM #62) |
| 66 | 2 | 11304 | COLLAR, LOOPER SHAFT |
| | 2 | SC54012 | SCREW, SOC. CAP - #5-40 N.C. X 1/2 |
| 67 | 1 | 11303 | SHAFT, LOOPER |
| 68 | 2 | 11445 | BUSHING, LOOPER SHAFT |
| 69 | 1 | 11301 | HOLDER, LOOPER |
| | 1 | SS832316FP | SCREW, SOC. SET - #8-32 N.C. X 3/16 (FLAT POINT) |
| | 1 | SC54014 | SCREW, SOC. CAP - #5-40 N.C. X 1/4 |
| 70 | 1 | 11300 | LOOPER |
| 71 | 1 | 11447 | BUSHING, MAIN SHAFT - FRONT |
| 72 | 1 | H832516 | SCREW, HEX H.D. - #8-32 N.C. X 5/16 |
| 73 | 1 | WIT8 | WASHER, INTERNAL TOOTH - #8 |
| 74 | 1 | 11003 | CLIP, ANGLE |
| 75 | 1 | 11437 | CARRIER BLOCK, FEED DOG |
| | 4 | SS64038FP | SCREW, SOC. SET - #6-40 N.F. X 3/8 (FLAT POINT) |
| 76 | 1 | 11410 | WASHER, FELT |
| 77 | 1 | 11446 | SLIDE |
| 78 | 1 | 11203 | FEED DOG |
| | 1 | 11215 | FEED DOG, SPECIAL (LINEN MACHINE ONLY) |
| 79 | 1 | WF8S | WASHER, FLAT - #8-SPECIAL |
| 80 | 1 | SC8321 | SCREW, SOC. CAP - #8-32 N.C. X 1 |
| 81 | 1 | H103238 | SCREW, HEX HD. - #10-32 N.F. X 3/8 |
| 82 | 1 | WIT10 | WASHER, LOCK - #10 |
| 83 | 1 | 11007 | BRACKET, KNIFE |
| 84 | 1 | 11703 | KNIFE, STATIONARY |
| | 2 | F348516 | SCREW, FLATHD. - #3-48 N.C. X 5/16 |
| 85 | 1 | 11702 | KNIFE, MOVING |
| | 2 | F348316 | SCREW, FLATHD. - #3-48 N.C. X 3/16 |
| 86 | 1 | 11016 | BUSHING, KNIFE SHAFT |
| 87 | 1 | 11707 | SHAFT, KNIFE |
| 88 | 1 | 11704 | SPRING, KNIFE - TENSION |



MODEL "ECR" HANDLE & ELECTRIC DRIVE

| ITEM | QUAN. | PART NO. | DESCRIPTION |
|------|-------|----------|---|
| 1 | 1 | 11450 | ASSY., PUMP - OIL |
| 2 | 1 | 11453 | CAP. OIL RESERVOIR |
| 3 | 1 | B83212 | SCREW, BINDING HD. - #8-32 N.C. X 1/2 |
| 4 | 4 | 11472 | SPRING, GARTER |
| 5 | 1 | 11141 | TUBING, OIL PUMP - PLASTIC |
| 6 | 1 | 11479 | RING, "O" |
| 7 | 1 | B832114 | SCREW BINDING HD. - #8-32 N.C. X 1 1/4 |
| 8 | 1 | 11475 | MANIFOLD, OUTSIDE |
| 9 | 1 | 11478 | RING, "O" |
| 10 | 1 | 11489 | TUBING, PLASTIC |
| 11 | 1 | 11485 | WELDMENT, MANIFOLD - INSIDE |
| 12 | 1 | 11490 | FITTING, BARBED |
| 13 | 1 | F832516 | SCREW, FLAT HD. - #8-32 N.C. X 5/16 |
| 14 | 2 | PS14112 | PIN, SPRING - 1/4 DIA. X 1 1/2 |
| 15 | 1 | 11018 | GUARD, BELT |
| 16 | 2 | SB83238 | SCREW, SOC. BUTTON HD. - #8-32 N.C. X 3/8 |
| 17 | 2 | WS8 | WASHER, SPRING - #8 |
| 18 | 1 | 11938 | COUNTERWEIGHT |
| 19 | 1 | 11909 | BELT |
| 20 | 1 | 11012 | HANGER |
| 21 | 1 | 11017 | CLIP, HANGER |
| 22 | 1 | WIT8 | WASHER, INTERNAL TOOTH - #8 |
| 23 | 1 | NH832 | NUT, HEX - #8-32 N.C. |
| 24 | 1 | 11904 | PULLEY |
| 25 | 2 | R103238 | SCREW, ROUND HD. - #10-32 N.F. X 3/8 |
| 26 | 1 | 11011 | COVER, HANDLE |
| 27 | 1 | FR44034 | SCREW, FILLISTER HD. - #4-40 N.C. X 3/4 |
| 28 | 1 | 11819 | SWITCH |
| 29 | 2 | 76000 | WIRE NUT |
| 30 | 1 | 11808 | CORD, SET |
| | 1 | 85415 | CORD, SET - 12V (10 FT.) |
| 31 | 2 | SC142034 | SCREW, SOC. CAP - 1/4-20 N.C. X 3/4 |
| 32 | 2 | WS14 | WASHER, SPRING - 1/4 |
| 33 | 1 | 11028 | HANDLE |
| 34 | 1 | 11804 | BOLT, THREAD - CLAMPING |
| 35 | 10 | SF103238 | SCREW, SOC. FLAT HD. - #10-32 N.F. X 3/8 |
| 36 | 1 | 11073 | STRAIN RELIEF |
| 37 | 1 | 11988 | MOTOR LEAD - 3 WIRE SJO |
| 38 | 1 | 11902 | PULLEY MOTOR |
| 39 | 1 | 11997 | MOTOR, 115V |
| | 1 | 12451 | MOTOR, 230V |
| | 1 | 12475 | MOTOR, 12V |
| 40 | 1 | 11720 | STAND, THREAD |
| 41 | 1 | 11805 | NUT, WING - 1/4-20 N.C. |
| 42 | 1 | 11906 | ASSY., HINGE MOTOR MOUNT |
| 43 | 2 | 11908 | SCREW, SEMS - PAN HD. - #6-32 N.C. X 7/16 |

Assemblies Available

| ITEM | QUAN. | PART NO. | DESCRIPTION |
|------|-------|----------|---|
| REF | REF | 11198 | ASSY., GUARD - BELT |
| 15 | 1 | 11018 | GUARD, BELT |
| 13 | 1 | F832516 | SCREW, FLAT HD. - #8-32 N.C. X 5/16 |
| 14 | 2 | PS14112 | PIN, SPRING - 1/4 DIA. X 1 1/2 |
| 20 | 1 | 11012 | HANGER |
| 21 | 1 | 11017 | CLIP, HANGER |
| 22 | 1 | WIT8 | WASHER, INTERNAL TOOTH - #8 |
| 23 | 1 | NH832 | NUT, HEX - #8-32 N.C. |
| REF | REF | 11084 | ASSY., BELT GUARD & HANDLE |
| 13 | 1 | F832516 | SCREW, FLAT HD. - #8-32 N.C. X 5/16 |
| 14 | 2 | PS14112 | PIN, SPRING - 1/4 DIA. X 1 1/2 |
| 20 | 1 | 11012 | HANGER |
| 21 | 1 | 11017 | CLIP, HANGER |
| 22 | 1 | WIT8 | WASHER, INTERNAL TOOTH - #8 |
| 23 | 1 | NH832 | NUT, HEX - #8-32 N.C. |
| 25 | 2 | R103238 | SCREW, ROUND HD. - #10-32 N.F. X 3/8 |
| 26 | 1 | 11011 | COVER, HANDLE |
| 27 | 1 | FR44034 | SCREW, FILLISTER HD. - #4-40 N.C. X 3/4 |
| REF | REF | 11174 | ASSY., HANDLE & COVER |
| 25 | 2 | R103238 | SCREW, ROUND HD. - #10-32 N.F. X 3/8 |
| 26 | 1 | 11011 | COVER, HANDLE |
| 27 | 1 | FR44034 | SCREW, FILLISTER HD. - #4-40 N.C. X 3/4 |
| 31 | 2 | SC142034 | SCREW, SOC. CAP - 1/4-20 N.C. X 3/4 |
| 32 | 2 | WS14 | WASHER, SPRING - 1/4 |
| 33 | 1 | 11028 | HANDLE |
| 15 | 1 | 11018 | GUARD, BELT |

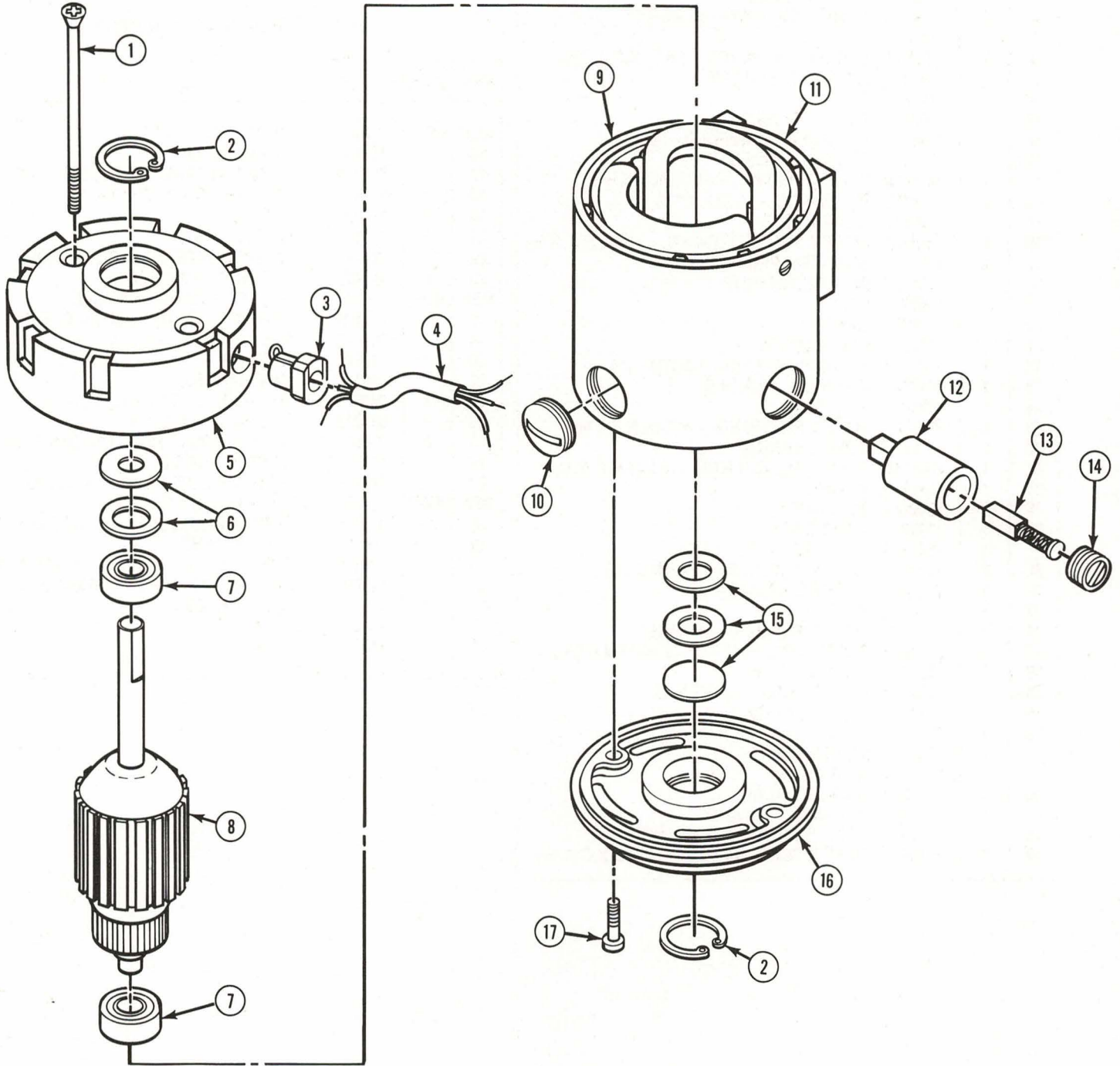
MOTOR INSTRUCTIONS

This motor is intermittent duty, which means that it should not run for long periods of time continuously. It is made for start and stop operations only, such as required by bag closing.

Brushes should be inspected at regular intervals so that wear can be detected, and replaced before they are about 1/8" in length. To remove brushes take out two screws from each side of motor; when replacing brush, be sure it is replaced at the same axial position as removed. If it isn't, excessive sparking and loss of power will result. New brushes are furnished with machine and can be purchased from us at any time.

DAVE FISCHBEIN CO. 2700 30TH AVE. SO. MINNEAPOLIS, MINNESOTA 55406, U.S.A.

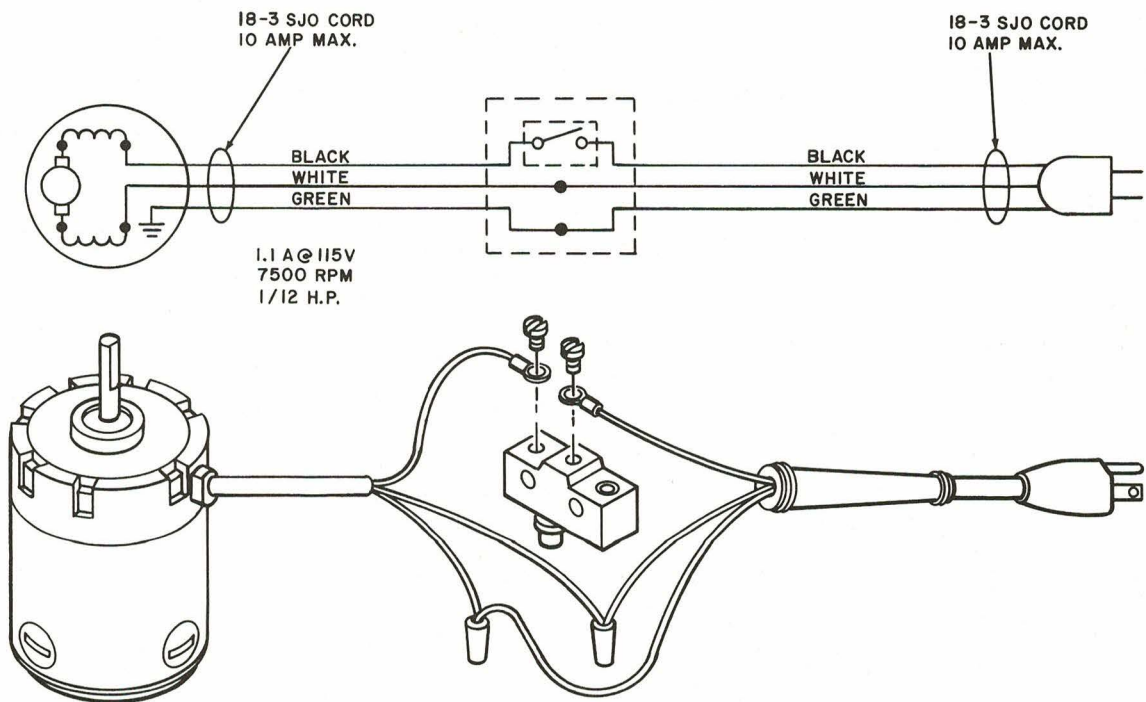
FORM NO. 400-486
PRINTED IN U.S.A.



MOTOR

PART NO. 11997 115 V – SINGLE PHASE – 1/12 H.P.
PART NO. 12451 220V – SINGLE PHASE – 1/12 H.P.

| ITEM | QUAN. | PART NO. | DESCRIPTION |
|------|-------|----------|--|
| 1 | 2 | 12467 | SCREW FLAT HD. PHILLIPS – # 10-32 N.F. X 3 1/4 |
| 2 | 2 | 12461 | SNAP RING |
| 3 | 1 | 12469 | CORD GRIP – HEYCO |
| 4 | 1 | 12470 | CORD, MOTOR |
| 5 | 1 | 12455 | HOUSING, FRONT |
| 6 | 1 | 12462 | SPACERS, FRONT PRELOAD (SET) |
| 7 | 2 | 11955 | BEARING, BALL |
| 8 | 1 | 12452 | ARMATURE – 115V - SINGLE PHASE - 1/12 H.P. |
| | | OR | |
| | 1 | 12453 | ARMATURE – 220V - SINGLE PHASE - 1/12 H.P. |
| 9 | 1 | 12456 | HOUSING, CENTER |
| 10 | 1 | 11914 | PLUG, INSPECTION HOLE |
| 11 | 1 | 12472 | ASSY., FIELD – 115V |
| | | OR | |
| | 1 | 12473 | ASSY., FIELD – 220V |
| 12 | 2 | 12458 | HOLDER, BRUSH |
| 13 | 2 | 12460 | BRUSH |
| 14 | 2 | 12459 | SCREW, CAP – BRUSH HOLDER |
| 15 | 1 | 12463 | SPACERS, REAR PRELOAD (SET) |
| 16 | 1 | 12457 | HOUSING, REAR |
| 17 | 2 | 12468 | SCREW, PAN HD. PHILLIPS – # 10-32 N.F. X 9/16 |



“SHORT STITCHES” — #3 (REVISED)

by Carl Johnson
April 26, 1983

SUBJECT: FISCHBEIN SYNTHETIC SEWING THREAD

Fischbein Premium Synthetic Thread is manufactured exclusively for the Dave Fischbein Company. The development of our proprietary formula for quality bag closing thread is based on more than 30 years experience with a wide variety of bag types, product characteristics, and operating conditions.

| | <u>Yield</u> <u>Feet per Pound</u> | <u>Tensile Strength</u> <u>(Pounds)</u> |
|-------|---------------------------------------|--|
| 4 Ply | 7,250 | 11.00 ± 8% |
| 5 Ply | 5,750 | 13.50 ± 8% |

PUT UP: Approximate 8 oz, 2-1/2 lb, and 18 lb precision-wound, knotless cones.

PACKAGING: Individual cones, packaged in protective polyethylene bags marked in green lettering “Fischbein Premium Synthetic Thread.”

PACKING: *8 oz cones* — 32 per box; 8 boxes per carton; approximately 128 lb cartons.

2-1/2 lb cones — 18 per carton; approximately 45 lbs.

18 lb cones — 8 per carton; approximately 144 lbs.

YIELD: *Portable* — single thread, 4 ply; approximately 500 18" wide bags per 8 oz cone.

Stationary — double thread, 5 ply; (2-1/2 stitches per inch); approximately 550 18" wide bags per pound of thread (combined needle and looper thread).