

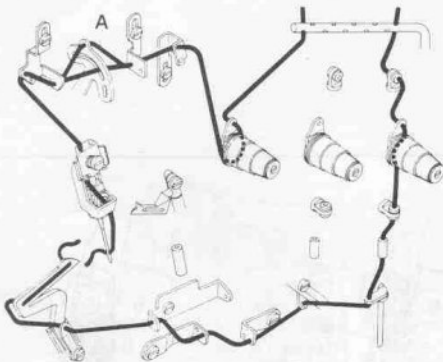
THREADING

Fig. 13, 14, 15

Thread your machine correctly as shown in Fig. 13, 14, 15. Incorrect threading may cause thread breakage, skip stitches, or uneven stitch formation.

Fig. 13

Pass 'A' when stretch threads are used.
Also, pass 'A' when non-stretch threads are used with
the stitch length longer than 2.8mm.



Stitch type 503

