

UNITY SEWING SUPPLY CO.  
824 N. ...

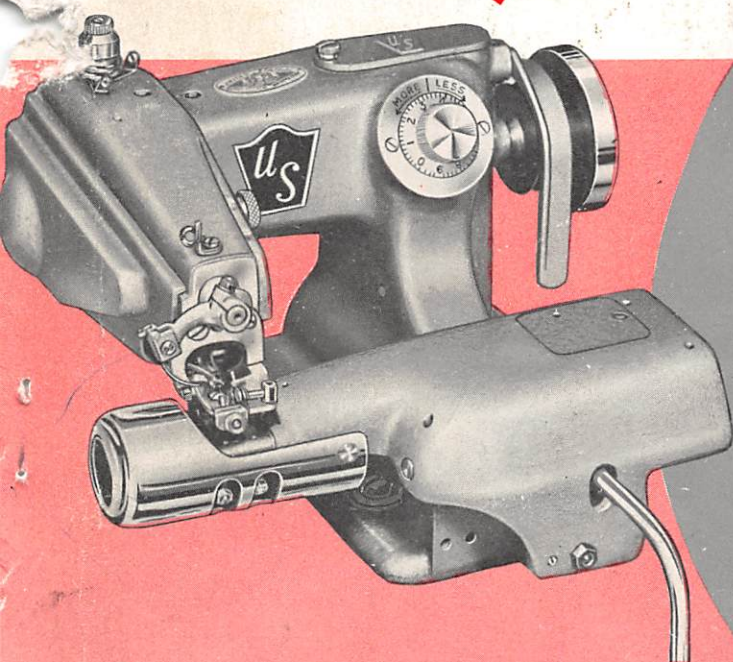
Los Angeles, CA 90021

## U. S. BLIND STITCH MACHINE CORP.

Express Street & Skyline Drive, Plainview, New York 11803

Telephone: 516-433-4350

Cable: "BLINSTIT PLAINVIEW NEWYORK"



# PARTS CATALOG and MAINTENANCE MANUAL for MACHINE MODEL

718-2



# HOW TO ORDER PARTS

## **PURCHASE ORDER**

<u>QUANTITY</u>	<u>DESCRIPTION</u>	<u>PRICE</u>	<u>AMOUNT</u>
	<u>FOR U.S. MODEL 718-1 - SERIAL NO.</u> xxxxx		
1	Part No. 2100 Feed Dog		
12	Part No. 1238 Needle Guide		

If parts are being ordered for several machines the Purchase Order should be prepared in a similar fashion to the following example:

	<u>FOR U.S. MODEL 718-1 - SERIAL NO.</u> xxxxx		
1	Part No. 2100 Feed Dog		
12	Part No. 1238 Needle Guide		
	<u>FOR U.S. MODEL 718-1 - SERIAL NO.</u> yyyyy		
1	Part No. 1046 Handwheel		
2	Part No. 1119 Screws - Feed Dog Attaching		
	<u>FOR U.S. MODEL 718-6 - SERIAL NO.</u> zzzzz		
1	Part No. 2112 Feed Dog		

**Be SURE to Specify Model and Serial number of machine when ordering parts!**

NOTE

The following parts catalogue consists of a complete basic catalogue plus the pink parts list sheet which immediately follows this note. When looking for a particular part, first consult the pink sheet. If the part does not appear on this sheet alongside the appropriate section, then turn to the corresponding section in the main catalogue and refer to the part number listed there.



718-2

GROUP	USE PART NUMBER	INSTEAD OF PART NUMBER	DESCRIPTION
MAIN FRAME	None		
MAIN SHAFT	None		
NEEDLE DRIVE	None		
FEED DRIVE	None		
LOOPER DRIVE	None		
FEED FRAME I	6007	6008	Rib Shaft Assembly
FEED FRAME II	None		
REGULATING	None		
FRONT PLATE	None		
PRESSERFOOT	6100 2300 2501 2601 1279 1077 1281(1) -- 1282(1)	6101 2301 2503 2600 5028 1099 -- 1283 --	Presserfoot Assembly Presserfoot Shoe - Presserfoot Front Guide Holder - Front Guide Screw-Front Guide Holder Attaching Screw-Front Guide to Holder Attaching Nut-Front Guide To Holder Attaching Knob-Front Guide Adjusting

### III - MAINTENANCE INSTRUCTIONS

#### INTRODUCTION

- A. Replacing the Looper
- B. Replacing the Needle Guide
- C. Replacing the Shoe
- D. Replacing the Feeder

## MAINTENANCE INSTRUCTIONS

### INTRODUCTION

All U.S. BLIND STITCH machines are designed for long life and trouble-free performance. When installed and lubricated in accordance with the INSTALLATION AND OPERATING INSTRUCTIONS, only the minimum maintenance normally associated with industrial sewing machines will be required. These maintenance requirements will generally be confined to the four locations described below, at which wear may be expected after extended use. When such wear does occur, the worn part may be readily replaced by following the appropriate instructions. For ease of installation, and to insure satisfactory service, it is essential that only genuine U.S. BLIND STITCH parts and needles are used. They are the only parts designed specifically for the machine, with the built-in long life and excellent wearing characteristics typical of the U.S. BLIND STITCH machine.

#### A. REPLACING THE LOOPER

1. Should it become necessary to replace the looper (item "B" in Figure 6), loosen the looper clamp screw (item "A" in Figure 6) and remove the old looper. Because of the precise fit of the looper in the looper rod it may be necessary to exert a moderate amount of force to pull the looper out. Insert the new looper into the end of the rod as far as it will go before bottoming on the looper shoulder.
2. Any time a looper is moved or changed, recheck the looper timing and reset if necessary. Proper looper timing is absolutely essential for correct stitch formation. As described in detail below, a properly timed looper will pass over the needle in the correct position to pick up the loop, and also clear the chain-off pin, feeder, looper slot, and needle. The first check point for timing the looper is at the position where the looper picks the thread loop off the needle during the needle return stroke. Referring to Figure 7, (Point "C"), the long prong of the looper should pass over and just clear the scarf of the needle, approximately  $3/32$ " (2.4mm) behind the end of the needle eye. At the same time, the short prong of the looper should pass over the needle with about  $1/64$ " (.406mm) clearance, and must be so set that it also clears the chain-off pin (item "D" in Figure 7).

3. To adjust the looper so that the timing checks out as noted in paragraph 2, it may be rotated within its clamp by a limited amount. This adjustment should be made with the looper clamp screw (item "A" in Figure 6) loosened, and the looper bottomed against its shoulder. Do not move the looper in or out, and do not attempt to force the looper to turn beyond the limited amount of travel available.
4. If the adjustment described in paragraph 3 is insufficient to provide the correct timing, it will be necessary to turn the looper rod (item "E" in Figure 6) itself. This may be accomplished by loosening the two looper rod clamp screws (item "C" in Figure 6) and the looper rod clamp nut (item "D" in Figure 6). The rod is then free to turn in the looper rod fork (item "F" in Figure 6). It will normally be necessary to make only a very small adjustment in order to get the looper into the correct rotational position for proper timing. If, for any reason, the rod has been removed or the basic setting of the looper rod has been disturbed by a large amount, it may be reset by noting that the distance from the center of the looper rod fork pin (item "G" in Figure 6) to the rear face of the looper rod ball (item "H" in Figure 6) is normally 4 & 3/32 inches (104mm) (refer to Figure 6). If the rod is set to this dimension then only minor adjustment will be required to bring the looper into the correct timing position. Note that this dimension is merely a guide to assist in setting a rod and variations may be expected from machine to machine.
5. If, after completing the above adjustments, it is found that the looper is either too low or too high, it will be necessary to adjust the eccentric block. First loosen the two set screws (item "A" in Figure 7). Place a wide blade screwdriver in the slot of the eccentric block (item "B" in Figure 7) and, using a slight turning motion, raise or lower the looper as required. Once the proper height is established, check to see whether the looper must be moved to the left or to the right prior to re-tightening the eccentric block set screws. If such a movement is required, it may be obtained by lightly tapping the eccentric block in the correct direction with the handle of a screwdriver.



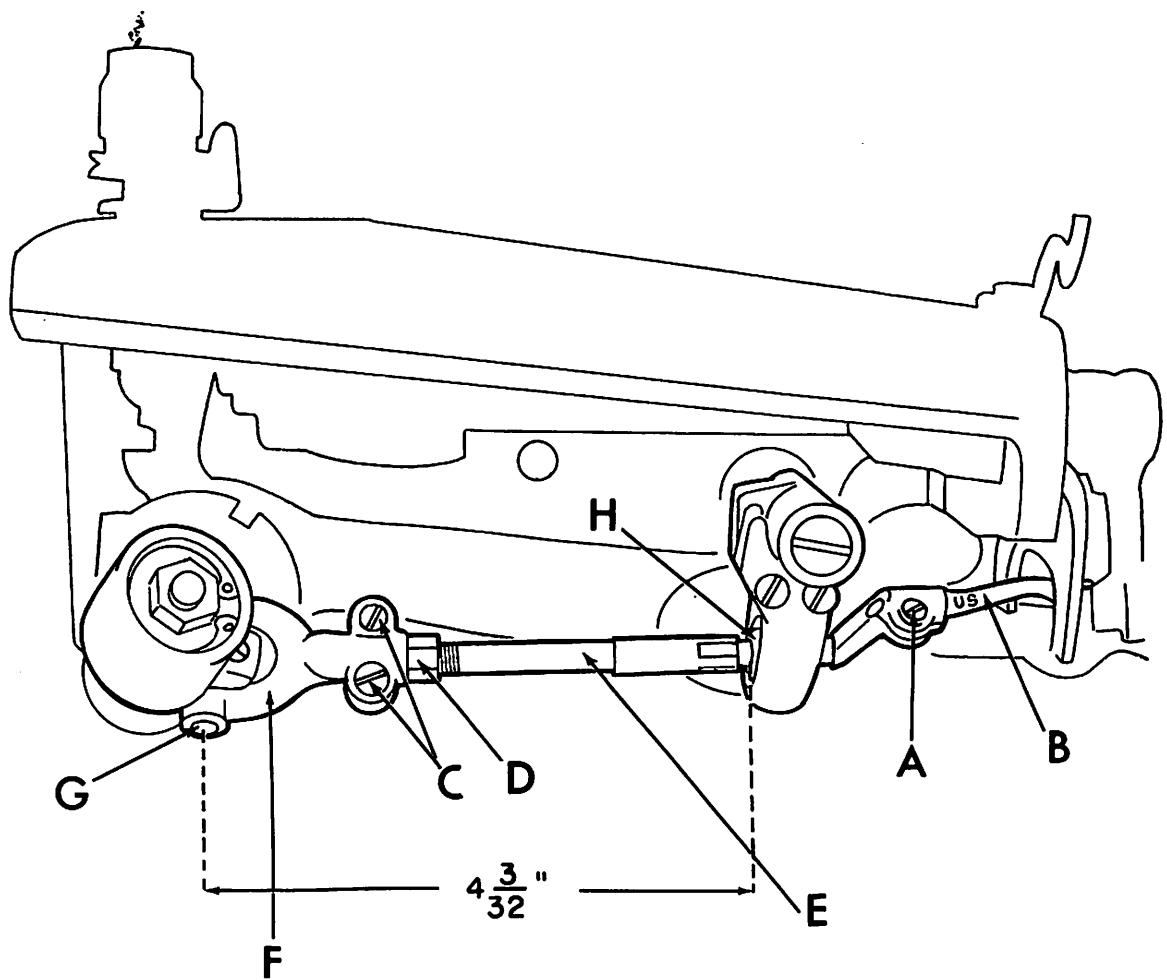


FIGURE 6



This condition can cause thread breakage and uneven penetration. When this happens the guide should be replaced. The needle guide was specifically designed as a readily replaceable wear plate to prevent damage to the presserfoot from the action of the needle.

2. Loosen the needle guide attaching screw (item "A" in Figure 9) and remove the worn needle guide. Clean out any lint or dirt that may have accumulated under the old guide and insert the new guide. Insure that the new guide is seated flush with the top and side of the presserfoot and then retighten the attaching screw. Slowly turn the handwheel in the direction away from the operator and check to insure that the new guide fits properly under the needle and that no interference has been introduced between the guide and the looper.

### C. REPLACING THE SHOE

1. The shoe, (item "E" in Figure 8), also known as a cloth retainer, normally will not require replacement. However, in the event of wear due to the particular fabrics being used, or if the shoe or spring suffers any damage, they may be readily replaced.
2. The first step is to remove the complete front guide assembly by unscrewing the front guide holder attaching screw (item "A" in Figure 8). Next loosen the shoe pin lock screw (item "B" in Figure 8) and slide out the shoe pin (item "F"), shoe and retaining spring (item "G"). Before removing these components it is advisable to note the manner in which the spring is assembled so that it may be reinstalled in the same way.
3. When replacing an old shoe, make sure that the replacement shoe properly fits the pin without binding and without excessive looseness. In the event that the pin has worn and does not fit the new shoe properly, it should be replaced at the same time as the shoe. After replacing the shoe, shoe pin and retaining spring retighten the shoe pin lock screw and check to insure that the center of the shoe is lined up with the center of the rib. Also insure that the shoe clears both sides of the opening in the presserfoot.

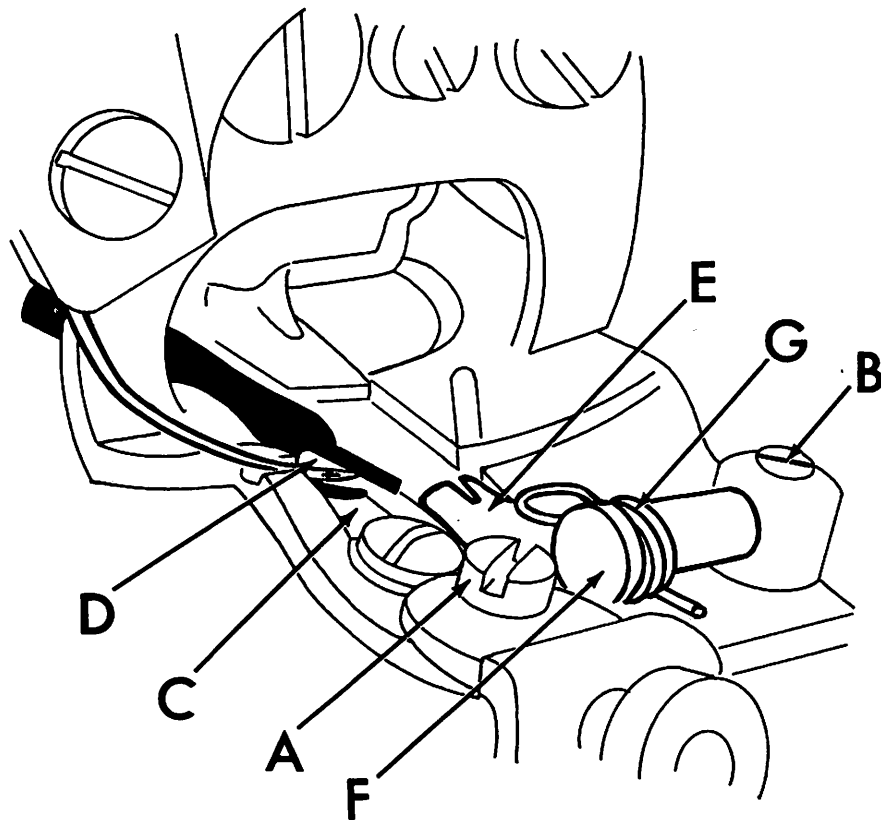


FIGURE 8

6. Once the looper is timed with respect to the needle as outlined in paragraphs 2 thru 5 above, slowly turn the handwheel in a direction away from the operator, until the looper approaches the edge of the looper slot (Point "C" in Figure 8) in the presserfoot. At this point make sure the small prong of the looper clears this edge. If it does not clear, adjust the eccentric block as outlined in paragraph 5 until the interference is eliminated.
7. Continue turning the handwheel away from the operator until the point of the needle starts to enter the area in between the looper prongs. (Refer to Point "D" in Figure 8). If the needle strikes the crotch of the looper, the looper has generally been set too far forward. Check to see if the looper has been inserted into the clamp as far as it will go. It should be inserted until the shoulder on the looper is stopped on the clamp. If this check is satisfactory, recheck the distance from the center of the looper rod fork pin to the rear face of the looper rod ball. Refer to paragraph 4 and reset if necessary. If neither of the above two measures corrects the problem, it is possible that the needle lever may be set too low and requires adjustment.
8. Once clearance is established between the needle and the looper crotch, continue turning the handwheel away from the operator until the needle passes between the looper prongs, clearing both the long and the short prong. If difficulty is experienced at this point, it may be necessary to modify some of the previous adjustments to the eccentric block or the looper rod length. If this is done, recheck the previous points to insure that a position is established which will satisfy all of the clearance conditions.
9. After all the necessary adjustments have been made, tighten all set screws and the lock nut and recheck all the adjustment points. Referring to Figure 9 the looper should now clear the chain-off pin ("D"), feeder ("E"), looper slot ("F"), needle, and pass over the needle in the correct position to pick up the loop.

#### B. REPLACING THE NEEDLE GUIDE

1. After considerable service, it may be expected that the wearing action of the needle will cause a sharp edged groove to form on the needle guide (item "G" in Figure 9).



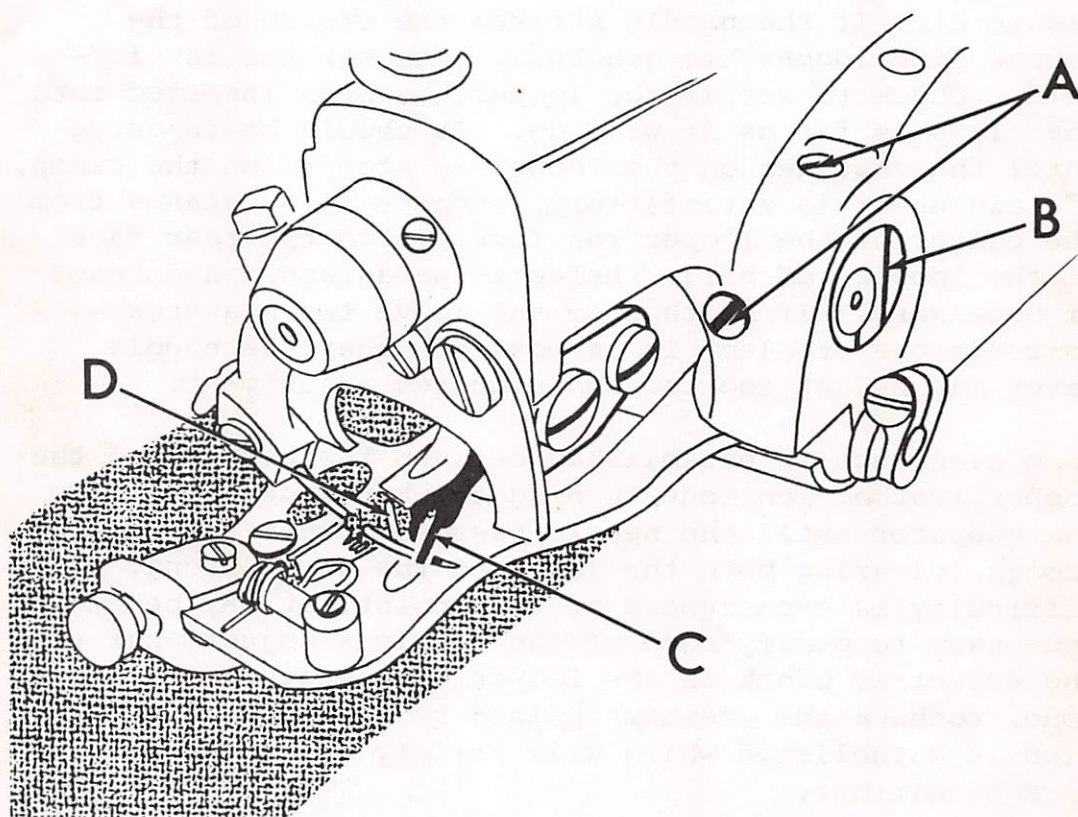


FIGURE 7

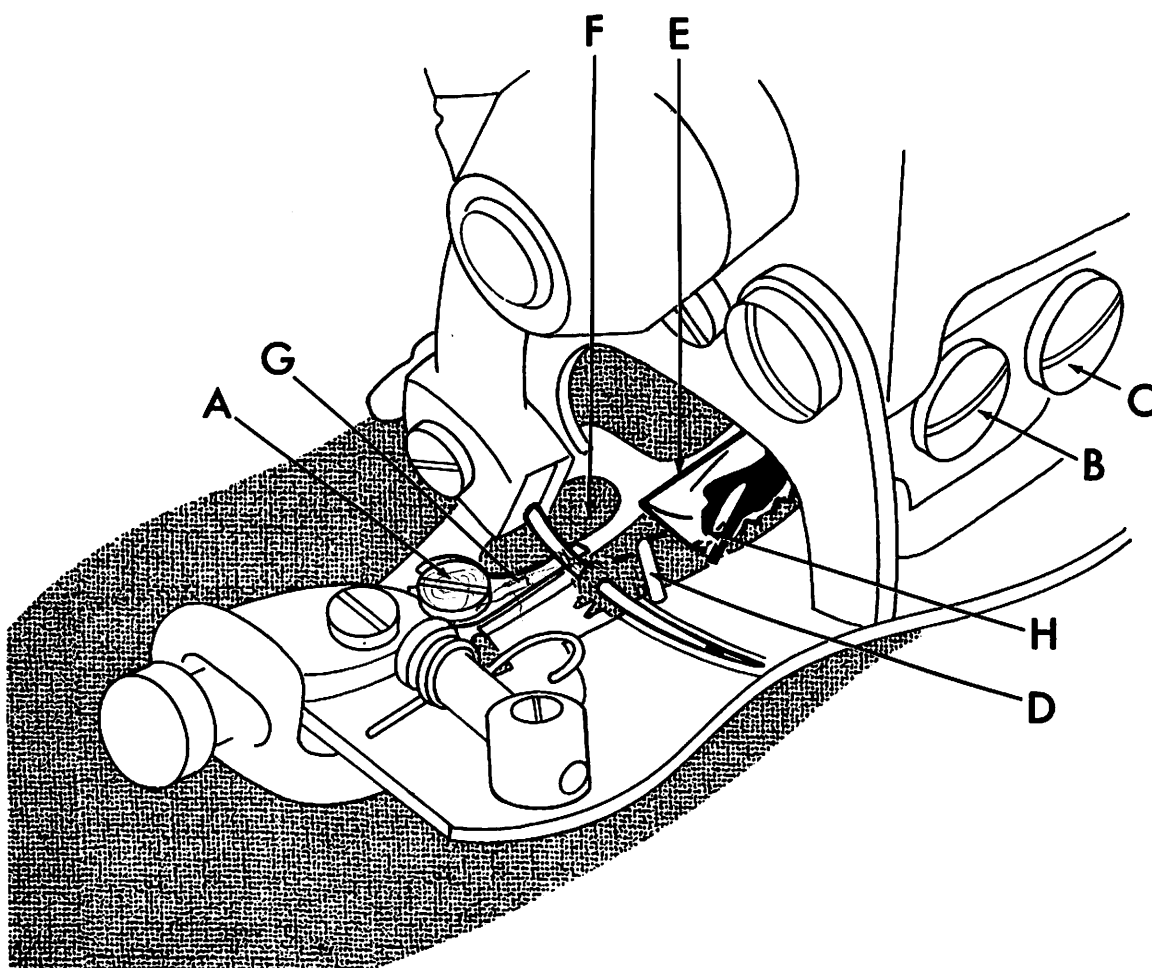


FIGURE 9

#### D. REPLACING THE FEEDER

1. In the event that the machine develops difficulty by failing to properly feed the work, a worn feeder is frequently found to be the cause. After considerable service, especially with certain hard fabrics, the feeder teeth have a tendency to become dull, and the feeder should be replaced. In order to remove the old feeder, remove the front feeder attaching screw (item "B" in Figure 9) and loosen the rear feeder attaching screw (item "C" in Figure 9). The old feeder may then be slid out of place. Insert the new feeder under the rear screw and replace the front screw.
2. Before tightening the attaching screws check to see that the feeder is set to the proper depth. Referring to Figure 10 this should be approximately  $\frac{1}{32}$ " (.795mm) below and parallel to the bottom of the presserfoot for all light and medium weight fabrics. For heavy fabrics, the setting should be approximately  $\frac{1}{16}$ " (1.59mm) below and parallel to the bottom of the presserfoot. These dimensions are intended as guides and may be modified as required by the specific fabrics. Once the proper depth is established, rotate the handwheel slowly in a direction away from the operator and check to insure that the feeder clears the looper (see Figure 9, Point "H") and also clears both sides of the feeder slot in the presserfoot. Firmly tighten feeder attaching screws (Figure 9, Items "B" & "C") before resuming sewing.

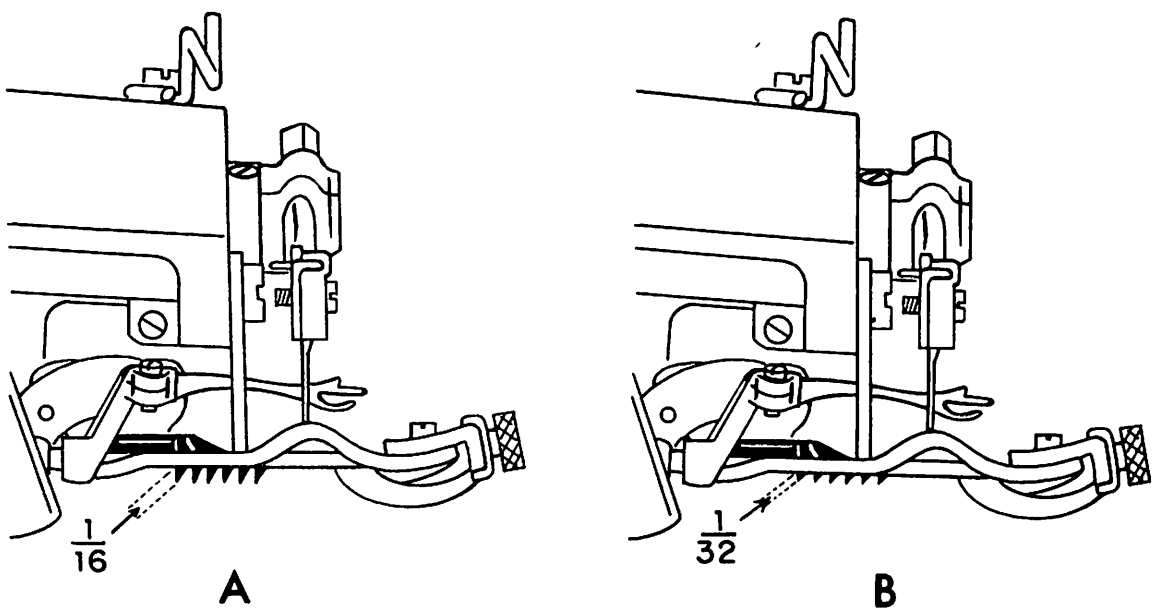


FIGURE 10



## PARTS CATALOGUE

### INTRODUCTION

- A. Main Frame Group
- B. Main Shaft Group
- C. Needle Drive Group
- D. Feed Drive Group
- E. Looper Drive Group
- F. Feed Frame Group I
- G. Feed Frame Group II
- H. Regulating Group
- I. Front Plate Group
- J. Presserfoot Group

## INTRODUCTION

This Parts Catalogue has been designed as an integral part of the U.S. BLIND STITCH MACHINE CORPORATION'S well known Spare Parts Supply system. Parts and needle orders are normally filled and shipped on the day they are received. A completely stocked Spare Parts Department is maintained to insure the immediate availability of parts and needles for all U.S. BLIND STITCH machines. In order to facilitate the ordering of parts and insure the accuracy of the order, this catalogue has been arranged in an extremely simple and straight-forward fashion.

A unique feature of this new U.S. BLIND STITCH catalogue is the availability of a specific catalogue for each of the many different U.S. BLIND STITCH models. This automatically eliminates the complicated searching among long lists of parts. It thus greatly reduces the time required to select the needed part number while at the same time increasing the accuracy of the selection. In practically all cases each part is represented by one and only one part number, which eliminates the necessity for selecting a particular variation. In the few instances where an option is offered on a particular model, the choice is clearly spelled out.

With this type of arrangement the procedure for ordering spare parts becomes extremely simple, as outlined below: Assume that it is necessary to obtain a replacement presserfoot shoe for a U.S. machine.

1. First, observe the model designation stamped on the nameplate located on top of the main frame (Refer to Figure 11). Make a note of the number.
2. Observe the particular machine serial number stamped on the bottom rear of the base casting (Refer to Figure 11). Note this number.
3. Select the catalogue for the model number noted in item (1). This model is clearly printed on the cover of the catalogue.
4. Note that the Parts Catalogue is divided into ten sections, each covering a different functional grouping of machine parts. The part in question here, namely the presserfoot shoe, obviously falls in Section J which covers the Presser-foot Group. Turn to this page and, referring to the illustration, note the reference number attached to the presserfoot shoe.

## INTRODUCTION (CONTINUED)

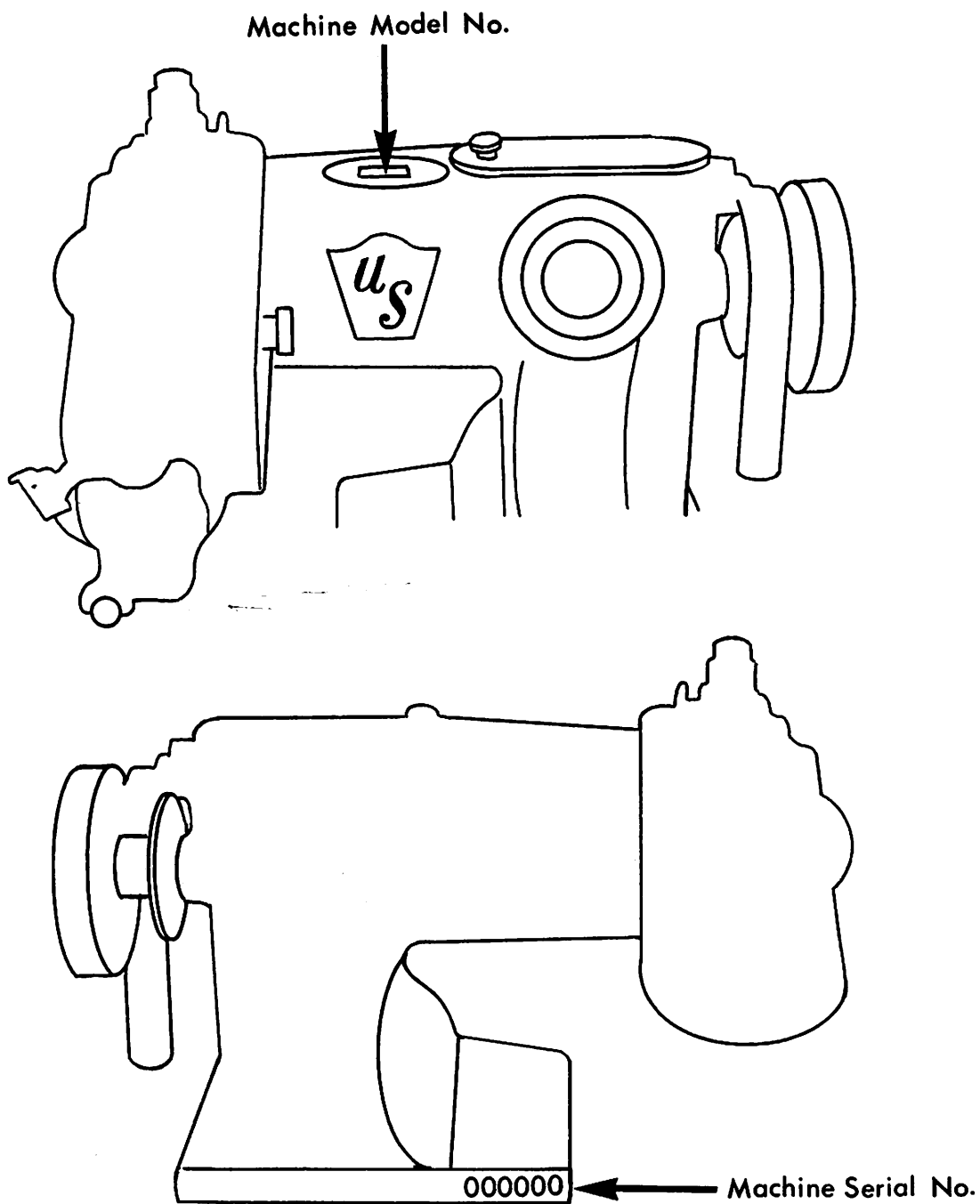
5. The page facing the illustration contains a listing of each part in the illustration together with the reference number and the part number. Using the reference number noted in item 4, find the part listing and part number. THIS IS THE PART NUMBER TO ORDER. (PARTS CANNOT BE ORDERED BY REFERENCE NUMBER.)
6. In order to completely eliminate any possibility of error, with each part ordered it is essential that mention is made of model designation (item 1 above), serial number (item 2 above), and part number (item 5 above).

After a very brief period of familiarization with the Parts Catalogue it will be found that ordering spare parts is a simple and quick procedure. Specifying model number, serial number and part number provides a fool-proof combination of information which will insure that the correct part is received in the shortest possible time. Refer to Figure 12 for an illustration of a properly prepared purchase order.

In using the Parts Catalogue it may be noted that certain part numbers carry the prefix T. This designates an assembly which is precision matched at the factory for proper operation and long life. For this reason, the various components will not be sold separately insofar as we cannot insure customer satisfaction unless they are factory fitted. If a part of any of these assemblies bearing the prefix T requires replacement, it will be necessary to replace the entire assembly. The few assemblies involved are shown in outline drawings on the illustration sheet, and play a critical role in the proper functioning of the U.S. machine. In those cases where the assemblies involved also include non-matched components such as screws, these, of course, will be provided as separate spare parts. Such components are shown on the illustration sheet and listed on the parts sheet immediately below the affected assembly.

Certain assemblies which do not require critical matching are available either as complete assemblies or detail components to suit the convenience of the customer. The complete assembly carries a separate reference number and part number. The detail components also have individual reference numbers and part numbers and are listed immediately below the assembly in the parts list.





**FIGURE 11**

**NOTE**  
Always Specify  
Model and Serial  
Number of Machine  
when ordering  
parts

PURCHASE ORDER

<u>QUANTITY</u>	<u>DESCRIPTION</u>	<u>PRICE</u>	<u>AMOUNT</u>
	<u>FOR U.S. MODEL 718-1 - SERIAL NO. xxxxx</u>		
1	Part No. 2100 Feed Dog		
12	Part No. 1238 Needle Guide		

If parts are being ordered for several machines the Purchase Order should be prepared in a similar fashion to the following example:

	<u>FOR U.S. MODEL 718-1 - SERIAL NO. xxxxx</u>		
1	Part No. 2100 Feed Dog		
12	Part No. 1238 Needle Guide		
	<u>FOR U.S. MODEL 718-1 - SERIAL NO. yyyyy</u>		
1	Part No. 1046 Handwheel		
2	Part No. 1119 Screws - Feed Dog Attaching		
	<u>FOR U.S. MODEL 718-5 - SERIAL NO. zzzzz</u>		
1	Part No. 2112 Feed Dog		

FIGURE 12

MAIN FRAME GROUP

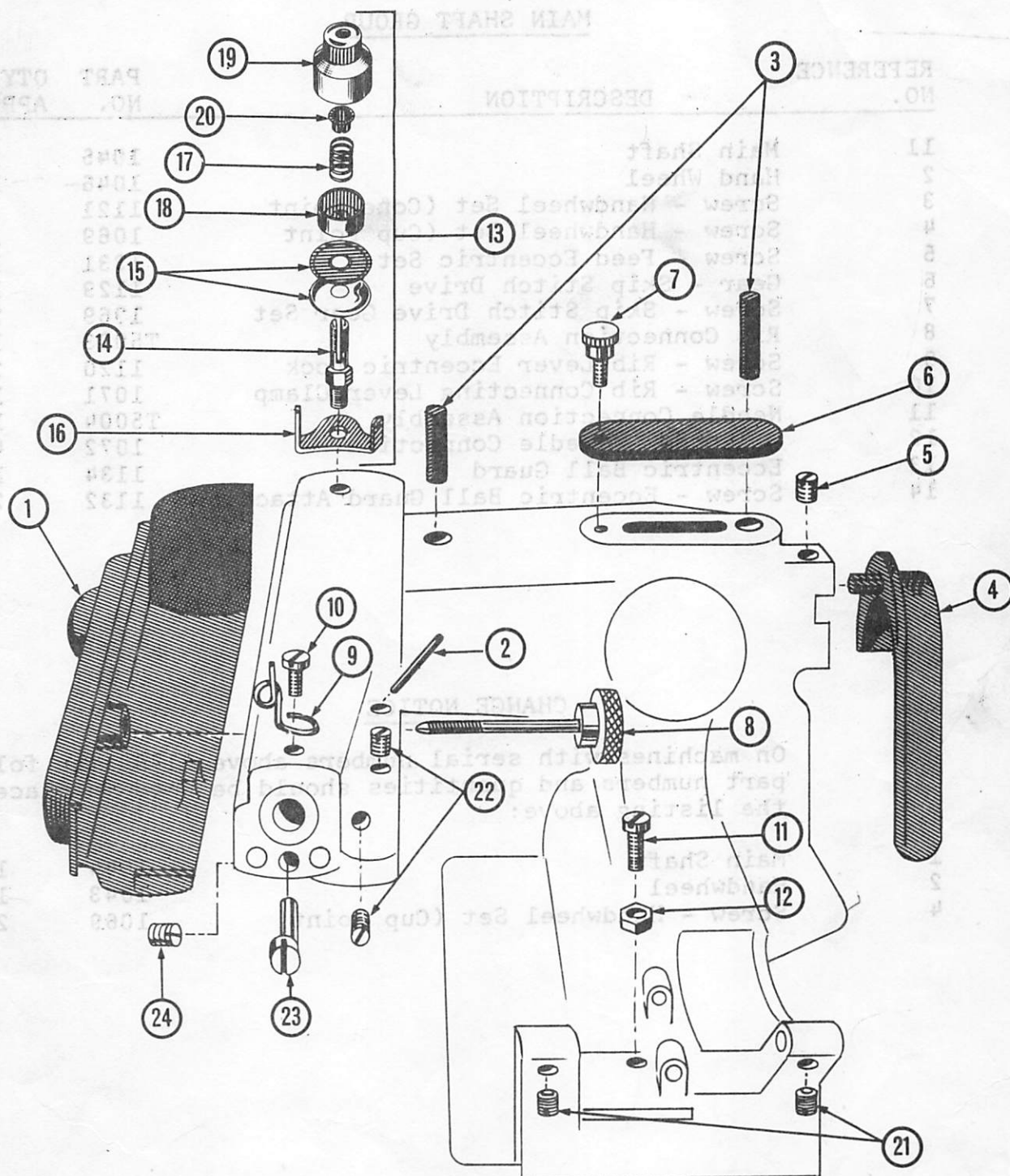
REFERENCE NO.	DESCRIPTION	PART NO.	QTY. THIS APPLICATION
1	Side Cover	5001	1
2	Oil Tube	1005	1
3	Oil Wick	1006	2
4	Belt Guard	1068	1
5	Screw - Belt Guard Set	1069	1
6	Cover Plate	1081	1
7	Screw - Cover Plate Attaching	1096	1
8	Screw - Side Cover Attaching	5019	1
9	Front Thread Guide	1080	1
10	Screw - Front Thread Guide Attaching	1070	1
11	Screw - Lift Arm Limit	1332	1
12	Nut - Lift Arm Limit Screw-Lock	1008	1
13	Thread Tension Regulating Assembly	5002	1
14	Tension Post	1082	1
15	Tension Discs	1083	2
16	Thread Guide	1084	1
17	Spring	1085	1
18	Cover	1009	1
19	Nut	1010	1
20	Ratchet	1011	1
21	Screw - Feed Frame Shaft - Set	1093	2
22	Screw - Eccentric Block - Set	1289	2
23	Eccentric Pin	1240	1
24	Screw - Eccentric Pin Set	1094	1

NOTE: Always Specify Model  
and Serial Number of  
Machine When Ordering  
Parts

AA

DO NOT use reference numbers when ordering parts.





Main Frame Group

### MAIN SHAFT GROUP

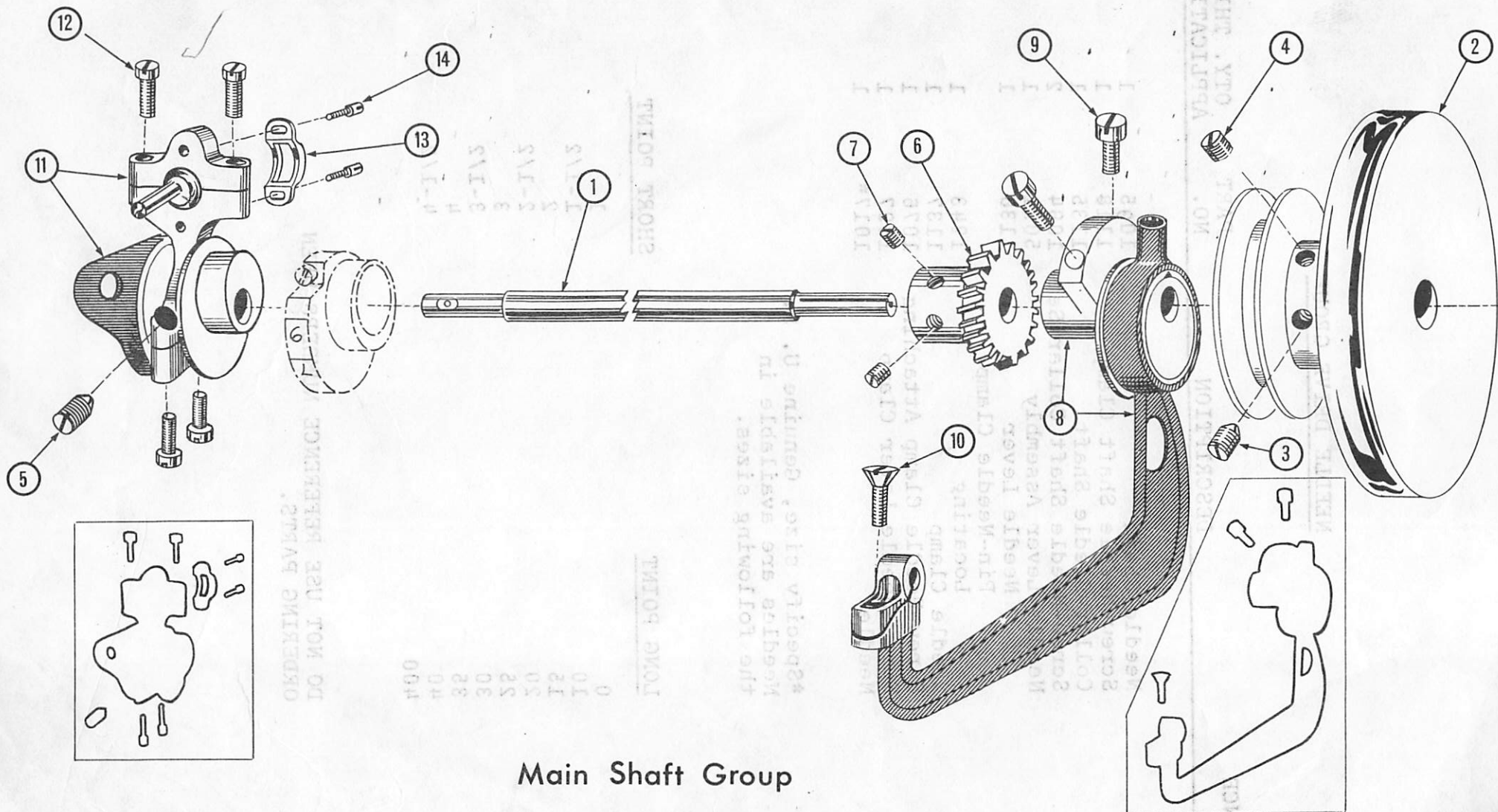
REFERENCE NO.	DESCRIPTION	PART NO.	QTY. THIS APPLICATION
11	Main Shaft	1045	1
2	Hand Wheel	1046	1
3	Screw - Handwheel Set (Cone Point	1121	1
4	Screw - Handwheel Set (Cup Point	1069	1
5	Screw - Feed Eccentric Set	1331	1
6	Gear - Skip Stitch Drive	1129	1
7	Screw - Skip Stitch Drive Gear Set	1069	2
8	Rib Connection Assembly	T5003	1
9	Screw - Rib Lever Eccentric Lock	1120	2
10	Screw - Rib Connecting Lever Clamp	1071	1
11	Needle Connection Assembly	T5004	1
12	Screw - Needle Connection	1072	4
13	Eccentric Ball Guard	1134	1
14	Screw - Eccentric Ball Guard Attaching	1132	2

### CHANGE NOTICE

On machines with serial numbers above 31700 the following part numbers and quantities should be used in place of the listing above:

1	Main Shaft	1044	1
2	Handwheel	1043	1
4	Screw - Handwheel Set (Cup Point	1069	2





Main Shaft Group

# NEEDLE DRIVE GROUP

REFERENCE NUMBER	DESCRIPTION	PART NO.	QTY. THIS APPLICATION
1	Needle Shaft	1095	1
2	Screw-Needle Shaft Clamp	1118	1
3	Collar-Needle Shaft	1135	1
4	Screw-Needle Shaft Collar Set	1094	2
5	Needle Lever Assembly	5021	1
6	Needle Lever	1136	1
7	Pin-Needle Clamp Locating	1243	1
8	Needle Clamp	1137	1
9	Screw-Needle Clamp Attaching	1076	1
10	Screw-Needle Lever Clamp	1097	1
11	Needle	1017*	1

\*Specify size, Genuine U. S.  
Needles are available in  
the following sizes.

## LONG POINT

0  
10  
15  
20  
25  
30  
35  
40  
400

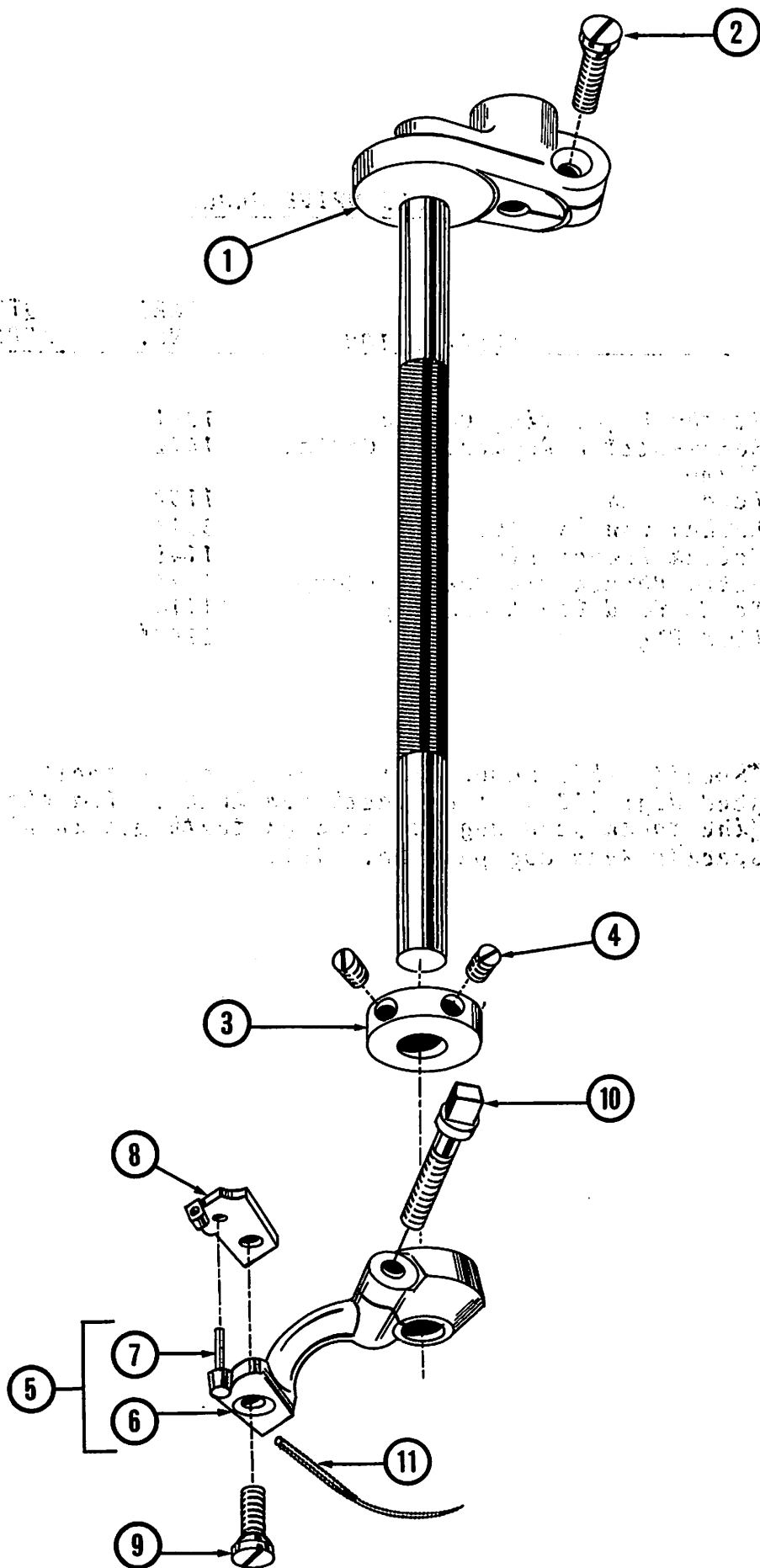
## SHORT POINT

1  
1-1/2  
2  
2-1/2  
3  
3-1/2  
4  
4-1/2

DO NOT USE REFERENCE NUMBERS WHEN  
ORDERING PARTS.

CA





## Needle Drive Group

C1

FEED DRIVE GROUP

REFERENCE NO.	DESCRIPTION	PART NO.	QTY. THIS APPLICATION
1	Stitch Regulating Collar	1091	1
2	Screw-Stitch Regulating Collar- Clamp	1072	1
3	Feed Lever	1138	1
4	Rocker Pin Assembly	5016	1
5	Collar Rocker Pin	1145	1
6	Screw Rocker Pin Collar Clamp	1076	1
7	Screw Feed Dog Attaching	1119	2
8	Feed Dog	2100*	1

\*Specify this number for regular coarse tooth feed dogs (12 rows of teeth per inch). For the fine tooth feed dog (20 rows of teeth per inch) specify feed dog part No. 2101.

DA

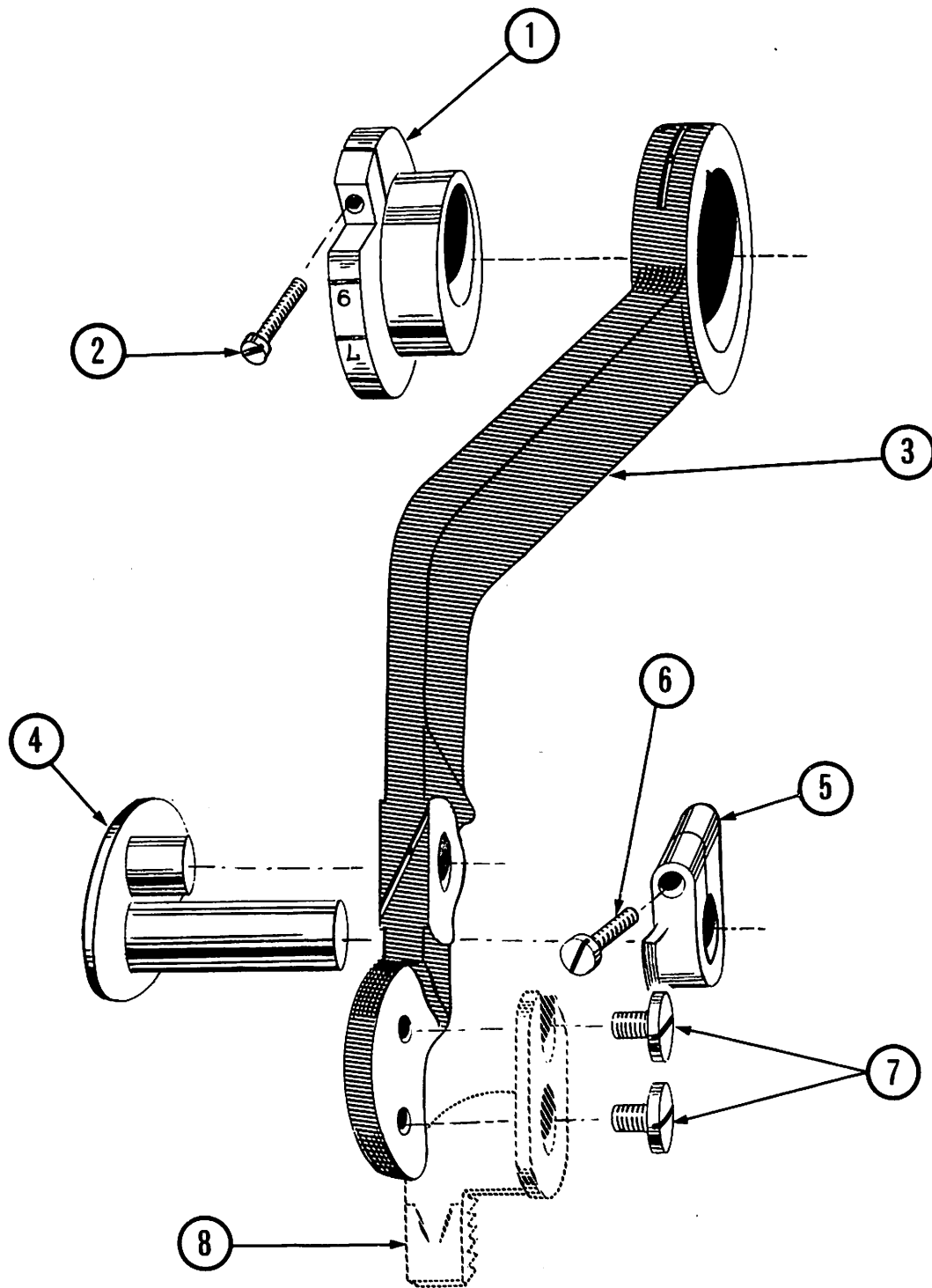
**Feed Frame Group II**

# REGULATING GROUP

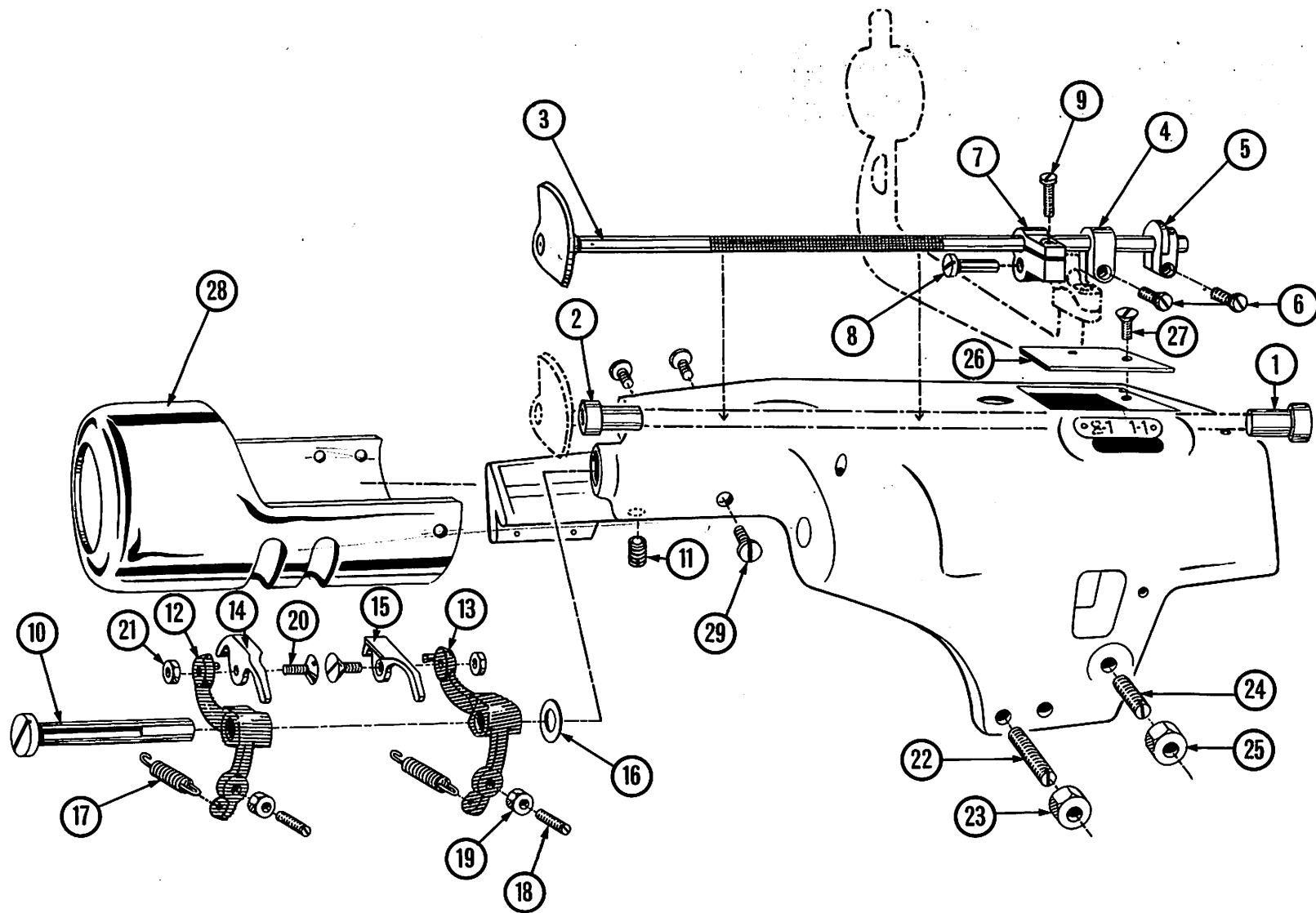
REFERENCE NO.	DESCRIPTION	PART NO.	QTY. THIS APPLICATION
1	Skip Eccentric Gear Assembly	5013	1
2	Carrier Stud - Skip Eccentric Gear	1201	1
3	Screw - Skip Eccentric Gear Carrier Stud Set	1069	1
4	Cam Roller	1180	1
5	Pin - Cam Roller-Support	1179	1
6	Screw - Cam Roller Support Pin-Set	1069	1
7	Support Arm - Cam Roller	1183	1
8	Pin - Roller Support Arm-Pivot	1026	1
9	Screw - Roller Support Arm Pivot Pin-Set	1094	1
10	Regulating Fork	1185	1
11	Pin - Regulating Fork - Pivot	1025	1
12	Push Rod Assembly (3/8")	5012	1
13	Push Rod (3/8")	1195	1
14	Cotter Pin	1023	1
15	Spring - Push Rod (3/8")	1024	1
16	Push Rod Assembly (1/4")	5011	1
17	Push Rod (1/4)	1193	1
18	Cotter Pin	1022	1
19	Spring - Push Rod (1/4")	1181	1
20	Regulating Dial Assembly	5018	1
21	Regulating Dial Shoe	1223	1
22	Regulating Dial Screw	1222	1
23	Face Plate & Guide Pin Assembly	5010	1
24	Dial and Ratchet Assembly	5039	1
25	Screw - Dial & Ratchet Assembly Lock	1039	1
26	Screw - Regulating Dial Assembly Attaching	1109	2

HA





**Feed Drive Group**



**Feed Frame Group I**

# FEED FRAME GROUP - II

REFERENCE NO.	DESCRIPTION	PART NO.	QTY.THIS APPLICATION
1	Spring Link Assembly	5020	1
2	Nut - Spring Link Assembly-Retaining	1146	1
3	Screw-Spring Link-Locating	1159	1
4	Link Screw-Main Spring	1177	1
5	Nut-Main Spring Adjusting	1184	1
6	Main Spring	1191	1
7	Shaft-Feed Frame Rocker	1066	1
8	Lift Arm Assembly	5153	1
9	Lift Arm	1335	1
10	Pin-Lifting	1406	1
11	Hook	1334	1
12	Screw-Lift Arm Clamp	1120	2
13	Screw-Lift Arm Limit	1055	1
14	Nut-Lift Arm Limit Screw-Lock	1008	1
15	Lever-Skip Regulating	1202	1
16	Stud-Skip Regulating Lever	1203	1
17	Spring Washer Skip Regulating Lever Stud	1028	1
18	Screw-Skip Regulating Lever Stud-Lock	1332	1
19	Knee Lifter Rod	1060	1
20	Collar-Knee Lifter Rod	1059	1
21	Screw-Knee Lifter Rod Collar-Set	1036	1
22	Spring-Knee Lifter Rod-Return	1061	1
23	Knee Pedal	1208	1
24	Screw Knee Pedal-Lock	1037	1

GE

## 5006 ASSEMBLY

Consists of:

5005... Sleeve Bearing\*  
1094... Screw  
1154... Fork  
3049... Screw  
1979... Nut

## 5186 ASSEMBLY

Consists of:

5185... Looper Rod & Ball\*  
5017... Carrier Assembly\*  
1117... Screw-Carrier  
1156... Looper Clamp Screw

## 5206 ASSEMBLY

Consists of:

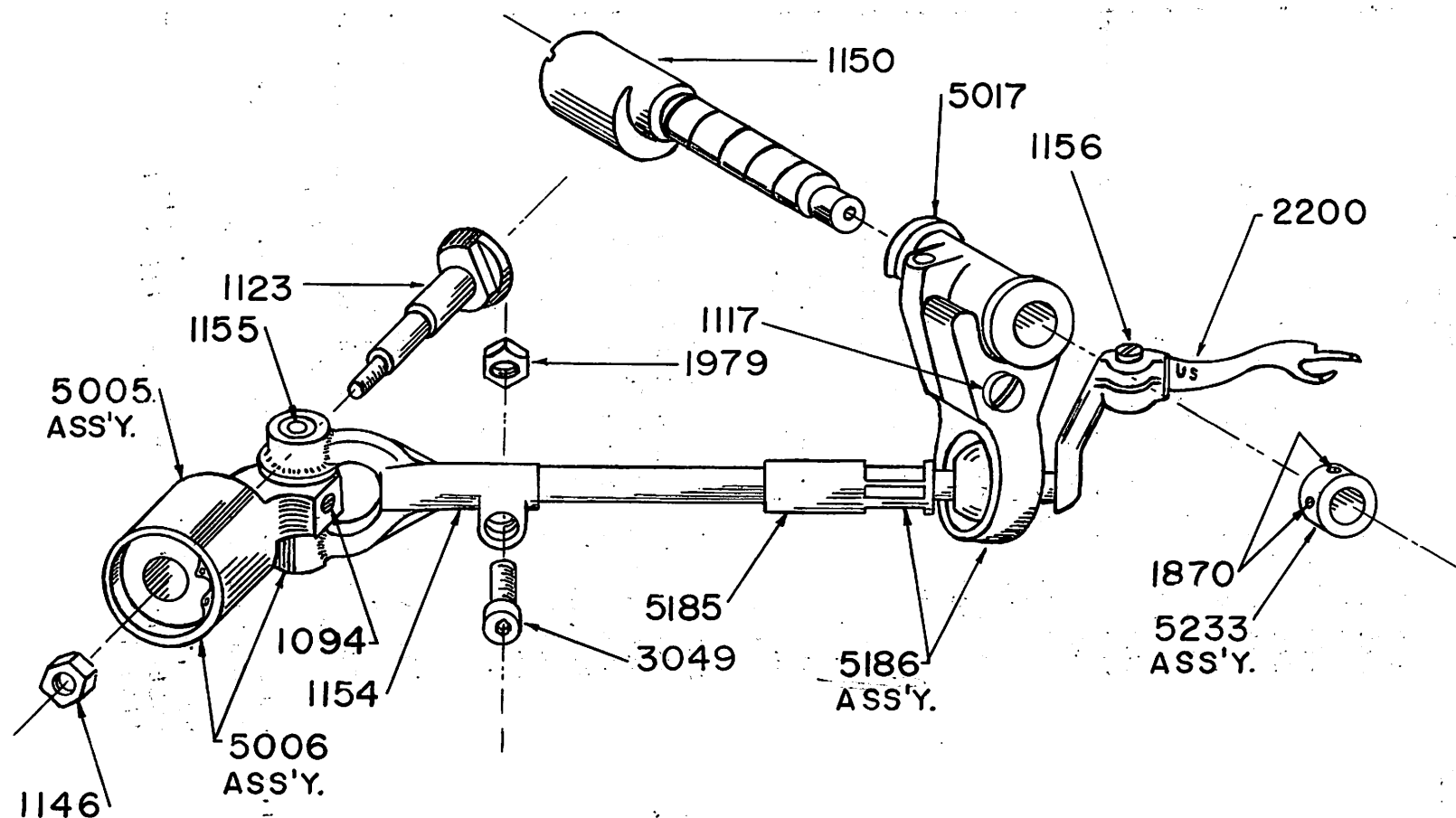
5186... Assembly  
1154... Fork  
3049... Screw Fork  
1979... Nut

## 5233 COLLAR ASSEMBLY

Consists of:

Collar  
1870... (2) Screws

*\*Not Sold Separately*



## LOOPER DRIVE GROUP



# FEED FRAME GROUP - I

REFERENCE NUMBER	DESCRIPTION	PART NO.	QTY. THIS APPLICATION
1	Rib Shaft Bushing - Right	1088	1
2	Rib Shaft Bushing - Left	1087	1
3	Rib Shaft Assembly	6008	1
4	Rib Shaft Collar - Left	1161	1
5	Rib Shaft Collar - Right	1162	1
6	Screw - Rib Shaft Collar - Clamp	1076	2
7	Crank - Rib Shaft	1163*	1
8	Stud - Rib Shaft Crank	1164*	1
9	Screw - Rib Shaft Crank - Clamp	1117	1
10	Stud - Platten Bracket Pivot	1166	1
11	Screw - Platten Bracket Pivot Stud-set	1069	1
12	Platten Bracket - Left	2451	1
13	Platten Bracket - Right	2450	1
14	Platten - Left	2400	1
15	Platten - Right	2401	1
16	Spacer - Platten Bracket	1021	As Required
17	Spring - Platten Bracket	1171	2
18	Screw - Platten Bracket - Limit	1114	2
19	Nut - Platten Bracket Limit Screw- Lock	1168	2
20	Screw - Platten to Bracket - Attaching	1244	2
21	Nut - Platten to Bracket Attaching Screw	1167	2
22	Screw - Feed Frame - Limit	1104	1
23	Nut - Feed Frame Limit Screw - Lock	1146	1
24	Screw - Skip Stitch Compensating	1105	1
25	Nut - Skip Stitch Compensating	1029	1
26	Window-Plate	1205	1
27	Screw - Window Plate Attaching	1030	1
28	Cylinder	1211	1
29	Screw - Cylinder Attaching	1101	3

\*These parts are available separately. However, it is recommended that, if either requires replacement, both should be replaced with a pair of factory fitted parts.

NOTE: Always Specify Model and Serial Number of Machine when ordering parts.

NUMBERS 9 & 10 REPLACED BY 1 PIECE  
ASSEMBLY 1150, COMPLETE WITH COLLAR  
1150-1

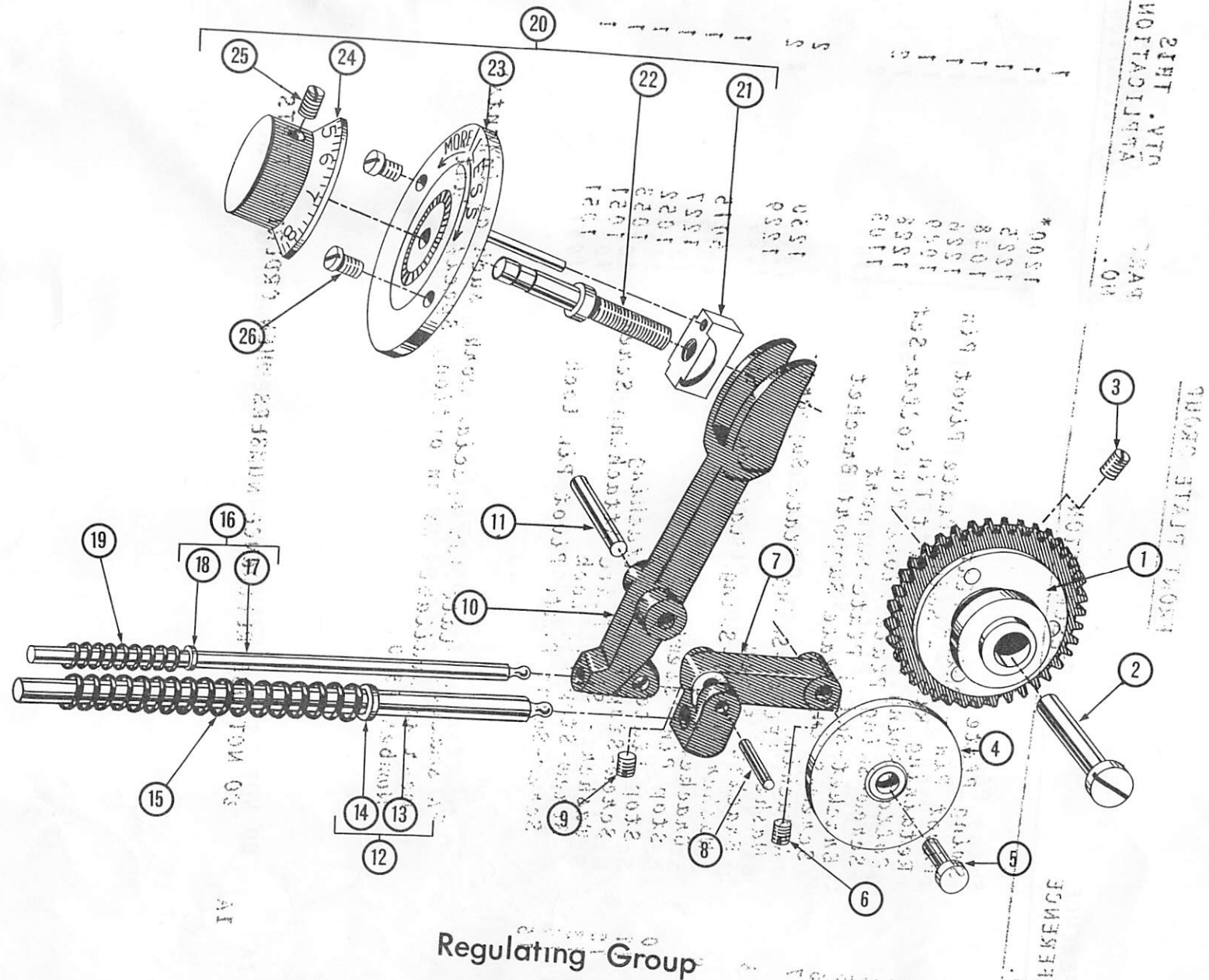
FC

# NOTICE

This catalogue lists the latest "hook-type" knee lifter configuration. For machines which incorporate the "toggle bolt-type" knee lifter, please observe the following differences. (The toggle bolt-type lifter may be recognized by the bolt which extends through a hole in the top of the feed frame.)

GROUP	USE PART NUMBER	INSTEAD OF PART NUMBER	DESCRIPTION
FEED FRAME II	5014	5060	Lift arm assembly
	1210	1335	Lift arm
	--	1406	Link Pin
	1204	--	Lift Arm Clevis
	1031	--	Pin-Lift Arm Clevis
	1206	--	Toggle Bolt
	1032	--	Pin-Toggle Bolt Pivot
	--	1334	Hook-Feed Frame Lifter
	1207	--	Swivel Washer
	1033	--	Nut-Toggle Bolt Lock





From the library of: Superior Sewing Machine & Supply LLC

DO NOT use reference numbers when

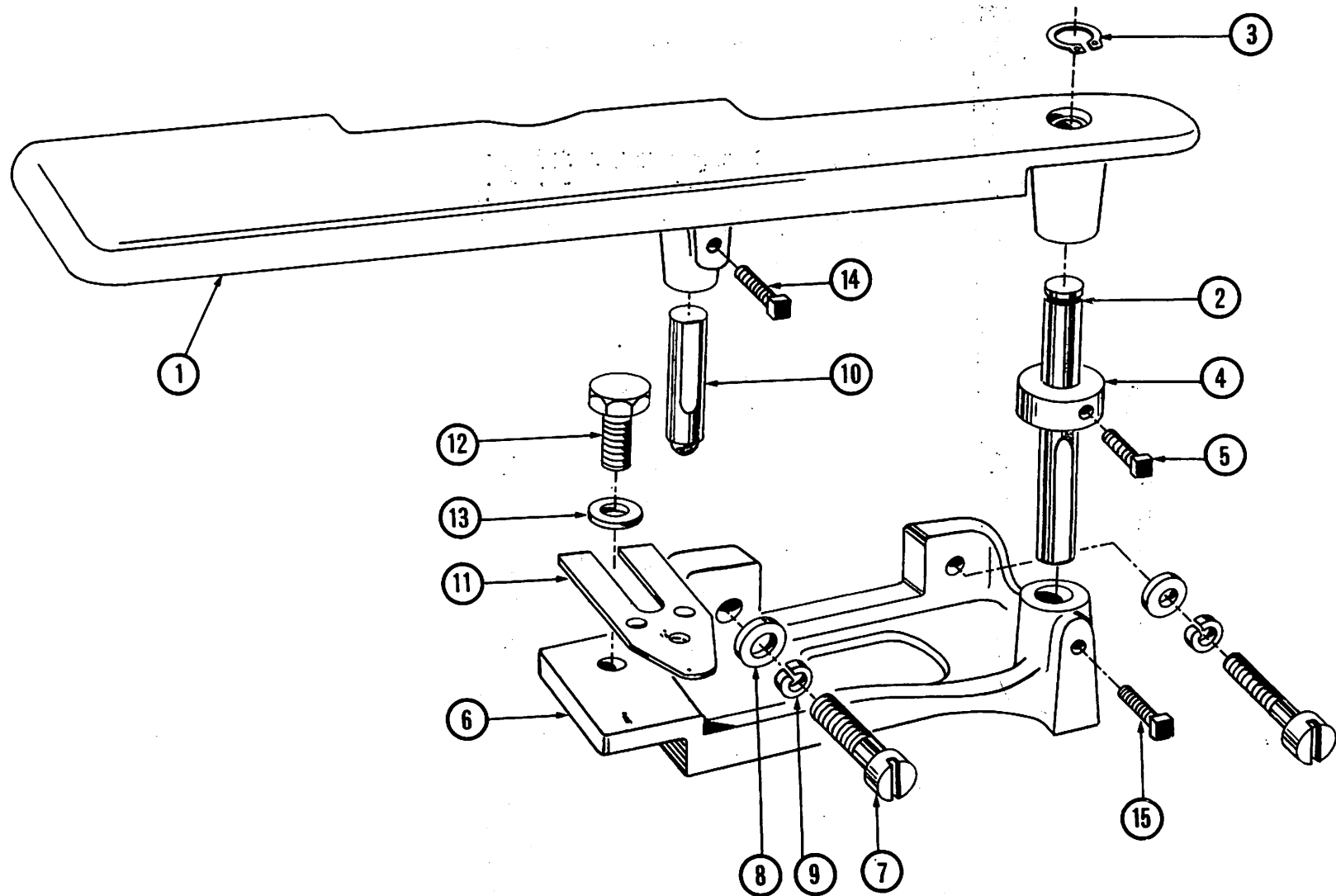
# FRONT PLATE GROUP

REFERENCE NO.	DESCRIPTION	PART NO.	QTY. THIS APPLICATION
1	Swing Plate	1200*	1
2	Pivot Pin - Swing Plate	1225	1
3	Retaining Ring - Swing Plate Pivot Pin	1048	1
4	Collar-Swing Plate Pivot Pin	1226	1
5	Screw-Swing Plate Pivot Pin Collar-Set	1049	1
6	Bracket-Swing Plate-Support	1228	1
7	Screw-Swing Plate Support Bracket Attaching	1103	2
8	Washer (Flat)-Swing Plate Support Bracket Screw	1230	2
9	Washer (Lock)-Swing Plate Support Bracket Screw	1229	2
10	Stop Pin Assembly	5015	1
11	Stop Plate	1227	1
12	Screw-Stop Plate Attaching	1052	1
13	Washer - Stop Plate Attaching Screw	1053	1
14	Screw-Stop Pin Lock	1051	1
15	Screw-Swing Plate Pivot Pin-Lock	1051	1

\*A smaller plate for special work, such as infants' wear is available as an option, Specify Part Number 1360.

1A DO NOT USE REFERENCE NUMBERS WHEN ORDERING PARTS.





## Front Plate Group

From the library of: Superior Sewing Machine & Supply LLC  
 DO NOT use reference numbers when ordering parts.

# PRESSERFOOT GROUP

REFERENCE NO.	DESCRIPTION	PART NO.	QTY. THIS APPLICATION
1	Presserfoot Assembly	6101	1
2	Presserfoot	2301	1
3	Bridge	1241	1
4	Chain Off Pin	1315	1
5	Shoe Post	1233	1
6	Shoe-Presserfoot	2503	1
7	Pivot Pin-Presserfoot Shoe	1235	1
8	Screw-Presserfoot Shoe Pivot Pin-Set	1106	1
9	Spring-Presserfoot Shoe	1239	1
10	Front Guide	2600	1
11	Holder-Front Guide	5028	1
12	Screw-Front Guide Holder Attaching	1099	1
13	Nut-Front guide to Front Guide Holder	1283	1
14	Needle Guide	1238	1
15	Needle Guide Attaching Screw	1122	1
16	Presserfoot Clamp Screw	1108	1
17	Presserfoot Clamp Screw Washer	1054	1
18	Presserfoot Bridge Screw	1107	2